



Mercedes-Benz

Genuine Accessories for the E-Class

APPEARANCE

04

- Light-Alloy Wheels
- Exterior Appearance
- Interior Appearance

ENTERTAINMENT
& COMMUNICATION

08

- Navigation Map Update
- Media Integration

UTILITY & CARE

12

- Carrier Systems
- Cargo Management
- Child Safety Seats
- Car Care
- Car Utility

LIFESTYLE
COLLECTION

20

- Lifestyle Collection



Chrome Door Handle Inserts | p. 06

17" 5-Spoke Wheel | p. 04



Ski & Snowboard Rack, Deluxe | p. 12

Roof Rack Basic Carrier | p. 13

Roof Spoiler | p. 07

Rear Spoiler | p. 07

Genuine
Mercedes-Benz
Accessories

E-CLASS

18" 5-Spoke Wheel

Finish: sterling silver

Wheel Size: 8.5 J x 18 ET 48 | Tire Size: 245/40 R18

Option for rear axle¹:

Wheel Size: 9 J x 18 ET 54 | Tire Size: 265/35 R18 XL

| Also shown on title |



A | Tire Valve Stem Caps

A perfect finishing touch, these chrome plated valve stem caps dress-up any wheel. Each a set of four. Available in black, silver or AMG designs.

B | Wheel Locks

Wheel locks can provide a subtle yet effective security touch to your E-Class, helping to protect your light-alloy wheels and tires from theft. One set secures four wheels. Includes coded key.

Accessory wheels are only for specified tire sizes and may require use of wheel bolts other than those originally supplied with your vehicle. Failure to use proper equipment could result in an accident or vehicle damage.

See your authorized Mercedes-Benz dealer for details and installation.

Not compatible with snow chains. Serious wheel and tire damage may occur if the vehicle is operated on rough or damaged road surfaces or upon encountering road debris or obstacles.

Wheel Hub Inserts

Add an attractive finishing touch to your wheels with these inserts. Various styles available:

- 1 | Classic Star & Laurel design in blue
- 2 | Classic Star & Laurel design in black
- 3 | Sterling silver with chrome Three-Pointed Star
- 4 | Titanium silver with chrome Three-Pointed Star

17" 5-Spoke Wheel

Finish: sterling silver

Wheel Size: 8.5 J x 17 ET 48 | Tire Size: 245/45 R17 XL

| Also shown on page 02_03 |



¹ Staggered wheel sizes not compatible with 4MATIC all wheel drive vehicles. Must use front axle size on both front and rear axle.

Light-Alloy Wheels**18" 2-Tone 5-Spoke Wheel²**

Finish: black and polished

Wheel Size: 8.5 J x 18 ET 48

Tire Size: 245/40 R18

Option for rear axle¹:

Wheel Size: 9 J x 18 ET 54

Tire Size: 265/35 R18 XL

²Available as of August 2009.

APPEARANCE

1 | License Plate Frames

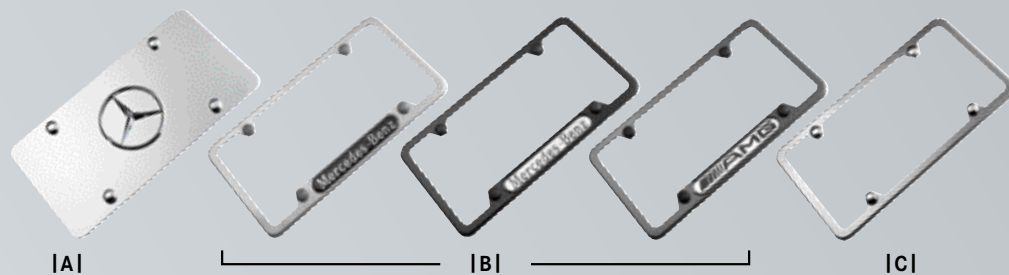
Choose from several quality stainless steel designs in an assortment of durable finishes to enhance the appearance of your license plates without blocking registration tags. Design styles include: Mercedes-Benz frame, Slimline frame, AMG Logo frame, and Star Marque solid plate. Please see INDEX for finish options for each design.

Chrome Door Handle Inserts

Help protect your finish from scratches and add a touch of style with a set of four chrome door handle inserts.



From the left to the right: **A | Marque Plate** with star logo **B | Nameplate Frames** Mercedes-Benz (Polished, Black Powder Coat) and AMG (Carbon Fiber) **C | Slimline Frame** (Black Pearl)



2 | Trunk Handle

Made of stainless steel in polished or satin finish, this handle attaches to the license plate and trunk lid to help prevent fingerprints and reduce the possibility of scratching the finish on your E-Class. It perfectly complements our wide assortment of genuine License Plate Frames. Also available with elegantly laser-etched Mercedes-Benz name.

3 | Rear Spoiler

Add this rear spoiler for a more athletic look for your E-Class, and watch as it subtly accentuates the trunk lines of your vehicle. Tailor-made of high-quality material for quick installation and a perfect fit. Comes primed, ready for painting.

4 | Roof Spoiler

This roof spoiler extends the roofline of your E-Class enhancing its sporty appearance by giving the rear window a more compact, coupe-style look. Tailor-made of high-quality material for quick installation and a perfect fit. Comes primed, ready for painting.



| 5 |



| 6 |

5 | Wood & Leather Steering Wheel

Add a touch of distinctive elegance to your E-Class with this steering wheel, made from durable richly-grained leather and hand-burnished ash wood (shown in image). Also available in burl walnut with black, beige or grey leather.

6 | Illuminated Door Sills

Light-up your E-Class in eye-catching style each time you open the front door with luminous blue-colored "Mercedes-Benz" stainless steel door sills.



| 4 |

APPEARANCE

Exterior Appearance
Interior Appearance

ZAGAT SURVEY

Food	Decor	Service	Cost
13	20	14	\$30

101 ANY RESTAURANT

▲ 1234 ANY STREET

ANY TOWN, NY

☎ (123) 456 - 7890

Map

Call

Details

Start

Back

Save



RADIO

DISC

NAVI

TEL

ON

OFF

1

2

3

CD

ABC

DEF

4

5

6

GHI

JKL

MNO

7

8

9

POPS

TUV

WXYZ

*

0

#

+

←

→

MERCEDES-BENZ NAVIGATION MAP UPDATE

More than a Map.™

Navigation Map Update

The Mercedes-Benz COMAND Navigation System³ is a fully integrated system that combines Global Positioning System (GPS) technology with electronic mapping software to help you to plan trips, navigate detours and avoid getting lost. Global Positioning System (GPS) satellites continuously track your vehicle's location and the system relies on mapping information in order to give you the most accurate and efficient routes.

Notice however, how quickly the surroundings change: roads are added or diverted, restaurants open and close, hotels and hospitals are built, ATMs move. In fact, as much as 20 percent of the navigation data the system relies on changes every year. That is why Mercedes-Benz offers reliable, and updated navigation data to help get you where you need to go effortlessly. The Navigation Map Updates are available for purchase from your authorized Mercedes-Benz dealer.

The system can route you through more than 6.1 million miles of navigable roads in the United States and Canada. Just enter the address on the intelligent destination input screen, and the system takes over, guiding you audibly and with a clear and detailed 7" LCD map display. Do you need an idea where to go? The Navigation System also offers 1.7 million Points of Interest in 40 categories including ATMs, restaurants, hotels, airports, museums and more.

³Navigation system data includes the United States, Canada, Puerto Rico, Hawaii and Virgin Islands. Directional assistance provided only when GPS coverage is available. Maps do not cover all areas nor all routes within an area. While the navigation system provides directional assistance, the driver must remain focused on safe driving behavior, including paying attention to traffic and street signs. The driver should utilize the system's audio cues while driving and should only consult the map or verbal displays once the vehicle has been stopped in a safe place. See your authorized Mercedes-Benz dealer for availability and details.



Navigation Map Update

ENTERTAINMENT
& COMMUNICATION

MEDIA INTEGRATION

Your music. Your Mercedes-Benz.

Taking your personal music collection with you wherever you go has never been easier. Mercedes-Benz now offers seamless integration of your iPod®/iPhone®⁴ into the audio system of your E-Class. With an interface that is compatible with any dock connector—equipped iPod/iPhone device, your iPod/iPhone charges while connected⁴. Steering wheel controls and a visual display of the track information make your iPod/iPhone a perfect fit with your Mercedes-Benz.

Mercedes-Benz iPod Integration Kit⁵

The Mercedes-Benz iPod Integration Kit puts the control at your finger-tips while playing your favorite music directly from your iPod or iPhone⁴. As with the Media Interface, the iPod integration connector is located in the glove compartment, and is compatible with most iPod models.⁵

Comfortably control your iPod by using your steering wheel buttons:

- A | *Navigate within the iPod music menu*
- B | *Access the Main Menu and control the volume*
- C | *View the artist and title information displayed in the vehicle's instrument cluster*



Media Interface

The Media Interface⁶ allows you to connect your audio devices to the interface located in the vehicle's glovebox. The Media Interface comes standard with two cables, an iPod connector [1] and a universal AUX input connector⁷.

A non iPod USB cable [2] is available at your Mercedes-Benz dealer, which will connect select⁸ USB sticks or media players with a USB port.

The audio output can be selected and controlled through the existing audio system in your vehicle. The current status of your audio device will also be displayed in the vehicle instrument cluster allowing you to keep your attention on the road.

⁴ iPod and iPhone are registered products of Apple Computer. All iPod and iPhone devices are sold separately. iPod Integration Kit also charges iPod/iPhone devices which support USB charging only (e.g. iPhone 3G).

⁵ The iPod Integration Kit is compatible with the following iPod/iPhone devices (sold separately): iPod Generation 4 (40GB), 5 and 6, iPod photo, iPod U2 Generation 5, iPod nano Generation 3 and 4, iPod touch Generation 1 and 2, iPhone Generation 1 and 3G. The iPod Integration Kit does not support telephone functionality of the iPhone.





PCMCIA Multi-Card Reader⁹

Listen comfortably to your music with the PCMCIA-Adapter of your COMAND system. The Plug & Play system in the COMAND immediately recognizes your PCMCIA Multi-Card Reader. A Memory Card (not included) is required to utilize the PCMCIA Multi-Card Reader. MP3-, WMA-, and ACC-Files are supported.

⁶ Factory option.

⁷ Control of devices connected via AUX is limited to volume control.

⁸ For a list of compatible devices, please visit <http://www.mbusa-mobile.com>

⁹ Available with COMAND only. Supported Memory Cards: SD, MMC, HS-MMC, DV-RS-MMC, C-Flash*, T-Flash*, Mini-SD*, RS-MMC*, MS, MS-Pro, HS-MS-MG-Pro, HS-MS-Pro, MS-Select, MS-Duo, MS-MG*, MS-MG Pro*, MS-Duo-MG*, MS-Pro Duo, MS-ROM*, X-card. *Requires adapter (not included).

ENTERTAINMENT & COMMUNICATION



Roof Cargo Containers

Create additional space for sports equipment and luggage with one of our aerodynamic, high-quality roof containers designed to nicely complement your E-Class. Constructed of lightweight, yet exceptionally durable, impact-tested thermoplastic material. Features pressurized struts for easy lid operation and a security lock. Comes in silver finish.

Small model holds 11.5 cubic feet. Medium model holds 14 cubic feet. Large model holds 16 cubic feet. All models have a maximum load capacity of 110 lbs. Requires Roof Rack Basic Carrier (sold separately).



Luggage Set for Roof Cargo Container

This set of four sporty and functional bags is designed to fit inside our Small Roof Cargo Containers. The Luggage Set for the Large Roof Cargo Container additionally includes two bags for two pairs of skis each. Made from durable, weather-resistant materials. Shoulder straps included (sold separately).

1 | Ski & Snowboard Rack, Deluxe

This rack holds up to six pairs of skis or four snowboards and features a pull-out function that makes it easier for loading and unloading without the need to reach across the roof of the car. Requires Roof Rack Basic Carrier (sold separately).

2 | Ski & Snowboard Rack, Standard

This rack is made to tote up to four pairs of skis or two snowboards atop your E-Class. Requires Roof Rack Basic Carrier (sold separately).



Basic Carrier Storage Bag

Protect your Roof Rack Basic Carrier in this nylon bag when not attached to your E-Class.



**Roof Rack Basic Carrier**

Our basic carrier is an essential component for attaching a wide assortment of items to the top of your E-Class. After easy installation, you can securely attach bicycles, ski and snowboard racks, or a cargo container. (Racks and containers sold separately.)

Bicycle Rack

| For Roof Rack Basic Carrier |

This rack securely holds up to 3 bicycles and attaches to the Roof Rack Basic Carrier (sold separately). Spiral Lock set available to help secure your bicycle (sold separately).

UTILITY & CARE



Reversible Cargo Mat

This mat performs two functions: to protect the interior carpet of your E-Class with a smooth soft fabric side or to prevent cargo from sliding with the rubberized side.



Cargo Nets, Floor, Loading Sill/Rear

Versatile and convenient, strong and durable nylon nets help you to secure objects in the back of your E-Class. Rear net may be attached to the loading sill. Each net is sold separately.

Flexible Cargo Stabilizer

This durable nylon and velcro-clad piece of foam offers firm lateral hold and helps protect objects from sliding around under normal driving conditions. Measures 36" x 2" x 2".



Non-Slip Mat

Reduces slipping of the items placed in the trunk.
Tailored to perfectly fit dimensions of the cargo area.
Made of oil resistant polyester.

Comfort Box

Our new Comfort Box provides a practical and isolated storage area for your personal items while in trunk. While not in use, the Comfort Box easily folds up to give you maximum space of the trunk.

**Cargo Area Tray/Cargo Box**

Protect the cargo area of your E-Class with this large tray with 2" sides. Formed from durable, easy-to-clean plastic to fit your vehicle. Use optional cargo box to support and keep in place tall objects, such as grocery bags. (Cargo box sold separately.)

Collapsible Shopping Crate

Make your next trip to the market more convenient with this collapsible shopping crate. To save space, it folds flat when not in use. Dimensions folded: 2" x 13" x 18".



Cargo Management

UTILITY & CARE



KID Booster Seat (40–79 lbs.)

Any child who has out-grown the Toddler seat should be properly secured in a booster seat until he or she is at least 57" tall. KID Booster seat features a height and angle-adjustable backrest and head-rests that can be positioned for comfort. Integrated belt guides on the sides help to keep the lap belt from sliding over the child's abdomen where it could cause injury in an accident. Fabric cover is removable for washing. This seat is BabySmart¹⁰ compatible.



DUO Plus Toddler Seat (20–40 lbs.)

Designed to afford excellent protection for children approximately 1 to 4 years of age. Features include single-handed adjustment to change from the upright position to the reclined and sleeping positions, height-adjustable shoulder belt, back area ventilation channels, and an additional tether for securing the top section. Fabric cover is removable for washing. This seat is LATCH¹⁰ and BabySmart¹⁰ compatible.



¹⁰ **Please consult your owner's manual or dealer for proper installation of your child seat.**

BabySmart/OCS Safety Information: Most Mercedes-Benz vehicles from MY 1998 through 2003, select models from 2004 through 2006, and current G-Class vehicles are equipped with BabySmart™. Mercedes-Benz vehicles equipped with BabySmart™ have a device that recognizes the presence of BabySmart™-equipped child seat when properly installed in the front passenger seat and deactivates the passenger front air bag (check your vehicle's Operator's Manual or labels located on the sides of your dashboard to verify).

All current Mercedes-Benz models are equipped with the Occupant Classification System (OCS) (with exception of the G-Class) which is designed to turn off the front passenger's front airbag when the system senses the weight of a typical child 12 months old or less plus the weight of a standard child restraint. See vehicle's operators manual for important additional information on this system and further information regarding the transportation of children heavier than a typical 12 month old.

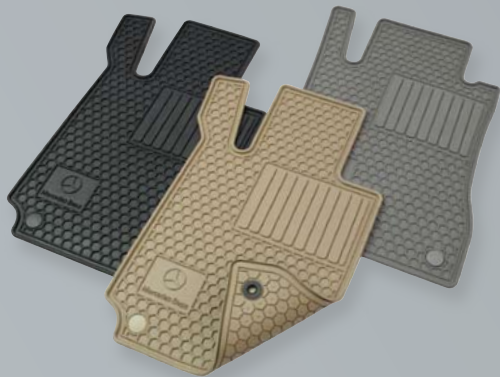
All Mercedes-Benz child safety seats meet or exceed U.S. Department of Transportation standards. They are also suitable for use in older vehicles that do not have integrated LATCH (Lower Anchors and Tethers for Children) attachment points. Visit the National Highway Traffic Safety Administration's website at <http://www.NHTSA.gov> for additional information about child safety seat laws and proper use.

**BabySafe Plus Infant Seat (up to 29 lbs.)**

Deep, molded rear-facing seat design provides extra protection and padding designed to help protect very young children up to 29 lbs. or 31 in. long. Features integrated head support, adjustable sun/wind canopy, comfortable 3-position carry handle, and variable recline angle adjustment. Light grey fabric cover is removable for washing. Can be used in the vehicle with or without the base. Approved for use in commercial aircraft. Weighs less than 8 lbs. This seat is BabySmart¹⁰ compatible and LATCH¹⁰ compatible with provided LATCH belt¹⁰.



UTILITY & CARE



All-Season Floor Mats

These custom designed rubber floor mats are a great way to keep the carpet in your E-Class in top condition. The honeycomb design helps trap water, mud, snow and salt. Easy to clean. Four mats per set. Available in black, grey or beige.

Car Cover

This UV-resistant 3-layer cover helps protect the finish of your E-Class from the elements. Made from breathable Noah® fabric, it combines an excellent fit with durable construction. (Lock and cable available separately.)



UVS-100™ Sunshade

Keeps the inside of your E-Class cool, while protecting the interior all year long from harmful UV rays. Practical and durable. Made of reflective fabric laminated to a foam core.



Coat Hanger

Robust coat hangers made from chromed metal. Easy to attach to front head rests. The ideal way to transport clothing without creasing them. (For safety, please remove with passenger in rear seat.)



*Car Care
Car Utility*



1 | Mud Flaps

Designed to match the contours of the E-Class, these durable formed black plastic mud flaps will help protect your vehicle and followers from some loose road debris, stones and the corrosive effects of salty road spray.

| Available in pairs for the front and the rear. Front Mud Flaps cannot be fitted with Sport or AMG package. |

2 | Interior Car Care Kit

Keep the interior of your Mercedes-Benz looking its best with the superior, specially formulated products in our exclusive Interior Car Care Kit. Includes Cabin Care Spray, Glass Cleaner, Auto Glass Sponge and a Car Care Cloth, all neatly packed into a Mercedes-Benz Leisure Bag.

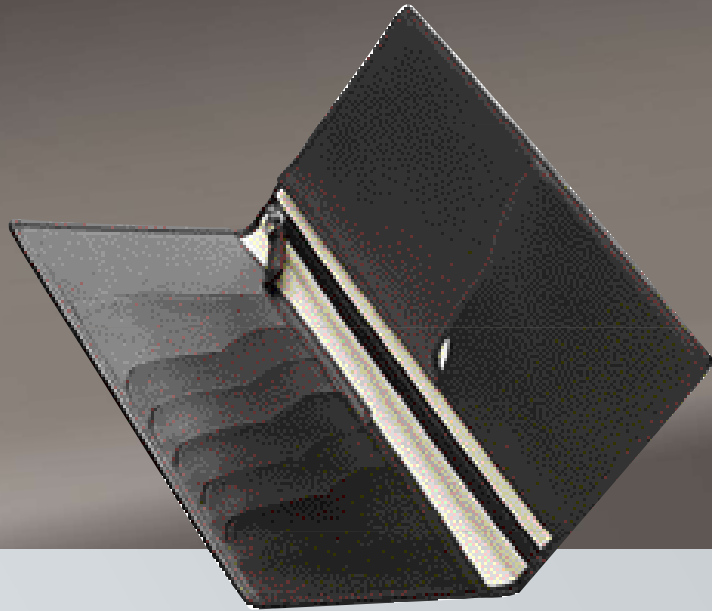
3 | Exterior Car Care Kit

Clean and protect your Mercedes-Benz with the superior, specially formulated products in our exclusive Exterior Car Care Kit. Includes Car Shampoo, Light-Alloy Wheel Cleaner with brush, Car Sponge and a Car Care Cloth, all neatly packed into a Mercedes-Benz Leisure Bag.

4 | Battery Trickle Charger

For those extended periods when your E-Class will not be used, this charging device will help ensure that your battery is fully energized when you need it.

UTILITY & CARE



Travel Wallet

Travel Wallet made of calf leather. Has 5 card pockets, a passport pocket with a zipper closure.

Umbrella

Small umbrella, extra large cloth covering in cuprit brown with herring bone lines. Handle has leather covering with logo. When folded will fit into the sidedoors of E-Class. Diameter open: approx. 48,8", umbrella cane length closed: 13,4".



Vehicle Badge Key Ring

Chrome-covered brass replica of vehicle badging.



Double sided Leather Key Ring

Made of brown calf leather. 3-dimensional star with enamel border.

E-Class Watch

Classic wrist watch
with clock-face
coloured in pearlbeige,
big chromed figures,
date display and leather
wristband coloured in
darkbrown.

**Button Covers**

Covers for dress shirt buttons.
Look just like cuff links.
3-dimensional star and enamel
border design.

LIFESTYLE
COLLECTION

APPEARANCE

Item	P.	Part no.
Chrome Door Handle Inserts (Set of 4)	06	A212 720 0040
Illuminated Door Sills (Beige)	07	A212 680 0235 8N84
Illuminated Door Sills (Black)	07	A212 680 0235 9051
Illuminated Door Sills (Grey)	07	A212 680 0235 7E94
Licence Plate Frames		
AMG Frame (Black pearl coat stainless steel)	06	BQ 688 0091
AMG Frame (Carbon fiber faux stainless steel)	06	BQ 688 0099
AMG Frame (Polished stainless steel)	06	BQ 688 0087
Marque Plate with Star logo (Black powder coat stainless steel)	06	BQ 688 0059
Marque Plate with Star logo (Polished stainless steel)	06	BQ 688 0058
Mercedes-Benz Frame (Black pearl stainless steel)	06	BQ 688 0090
Mercedes-Benz Frame (Black powder coat stainless steel)	06	BQ 688 0088
Mercedes-Benz Frame (Polished stainless steel)	06	BQ 688 0086
Mercedes-Benz Frame (Satin stainless steel)	06	BQ 688 0100
Slimline Frame (Black pearl stainless steel)	06	BQ 688 0092
Slimline Frame (Black powder coat)	06	BQ 688 0104
Slimline Frame (Black powder coat stainless steel)	06	BQ 688 0007
Slimline Frame (Polished stainless steel)	06	BQ 688 0005
Slimline Frame (Satin stainless steel)	06	BQ 688 0101
Slimline Frame (Stainless steel)	06	BQ 688 0103
Light-Alloy Wheels		
18" 5-Spoke Wheel (sterling silver) Wheel Size: 8.5 J x 18 ET 48, Tire Size: 245/40 R18 Wheel Size RA: 9 J x 18 ET 54, Tire Size: 265/35 R18 XL	04	A212 401 2102 A212 401 2202
17" 5-Spoke Wheel (sterling silver) Wheel Size: 8.5 J x 17 ET 48, Tire Size: 245/45 R17 XL	04	A212 401 1902
18" 2-Tone 5-Spoke Wheel (black and polished) Wheel Size: 8.5 J x 18 ET 48, Tire Size: 245/40 R18 Wheel Size RA: 9 J x 18 ET 54, Tire Size: 265/35 R18 XL	05	A212 401 3402 7X23 A212 401 3502 7X23
Rear Spoiler	07	A212 793 0388
Roof Spoiler	07	A212 793 0288

ENTERTAINMENT & COMMUNICATION

Item	P.	Part no.
Tire Valve Stem Caps (AMG)	04	BQ 640 8127
Tire Valve Stem Caps (Black)	04	BQ 640 8126
Tire Valve Stem Caps (Silver)	04	BQ 640 8128
iPod® Integration Kit	10	A204 870 4896
Media Interface USB Cable	10	A204 827 0304
Navigation Map Update	09	see dealer
PCMCIA Multi-Card Reader	11	B6 782 3974

APPEARANCE

	P.	Part no.
Trunk Handle (Polished Stainless Steel)	07	BQ 657 0004
Trunk Handle (Satin Stainless Steel)	07	BQ 657 0034
Trunk Handle - with Mercedes-Benz laser-etching (Polished Stainless Steel)	07	BQ 675 0035
Trunk Handle - with Mercedes-Benz laser-etching (Stainless Steel)	07	BQ 675 0036
Wheel Hub Inserts (Classic Star & Laurel design in black)	04	B6 647 0201
Wheel Hub Inserts (Classic Star & Laurel design in blue)	04	B6 647 0120
Wheel Hub Inserts (Sterling silver with chrome Three-Pointed Star)	04	B6 647 0206
Wheel Hub Inserts (Titanium silver with chrome Three-Pointed Star)	04	B6 647 0203
Wheel Locks	04	B6 647 0156
Wood & Leather Steering Wheel (ash wood with black leather)	07	A212 4601 1039 E38
Wood & Leather Steering Wheel (burl walnut with black leather)	07	A212 4600 7039 E38
Wood & Leather Steering Wheel (burl walnut with beige leather)	07	A212 4600 7038 P18
Wood & Leather Steering Wheel (burl walnut with grey leather)	07	A212 4600 7037 K53

UTILITY & CARE

Item	P.	Part no.
All-Season Floor Mats (Beige, set of 4)	18	BQ 668 0712
All-Season Floor Mats (Black, set of 4)	18	BQ 668 0710
All-Season Floor Mats (Grey, set of 4)	18	BQ 668 0711
Basic Carrier Storage Bag	12	A000 890 0111
Battery Trickle Charger	19	B6 754 2029
Bicycle Lock	13	A000 583 1595
Bicycle Rack (for Roof Rack Basic Carrier)	13	A000 890 0293
Car Cover	18	BQ 660 0089
Cargo Area Tray	15	A212 814 0041
Cargo Box	15	A000 814 0041
Cargo Net, Floor	14	A212 868 0074
Cargo Net, Loading Sill/Rear	14	A212 868 0174
Child Safety Seat BabySafe Plus Infant (up to 29 lbs.)	17	B6 686 8214
Child Safety Seat DUO Plus Toddler (20-40 lbs.)	16	B6 686 8219
Child Safety Seat KID Booster (40-79 lbs.)	16	B6 686 8310
Coat Hanger	19	A000 814 0132
Collapsible Shopping Crate	15	B6 647 0995
Comfort Box	15	A212 680 0010 9051
Exterior Car Care Kit	19	A211 986 0100
Flexible Cargo Stabilizer	14	A001 987 1414
Interior Car Care Kit	19	A211 986 0000
Leather Chamois	-	BQ 600 0010
Luggage Set for Roof Cargo Container (Small)	12	A000 890 0411
Luggage Set for Roof Cargo Container (Large)	12	A000 890 0511
Mud Flaps (Set front)	19	A212 890 0078
Mud Flaps (Set rear)	19	A212 890 0178
Non-Slip Mat	15	A212 684 0005
Reversible Cargo Mat	14	A212 680 0146

LIFESTYLE COLLECTION

Item	P.	Part no.
Button Covers	21	B6 695 4017
Double sided Leather Key Ring	20	B6 695 4016
E-Class Watch	21	B6 695 4020
Travel Wallet	20	B6 695 4023
Umbrella	20	B6 695 4025
Vehicle Badge Key Ring	20	B6 695 7503

UTILITY & CARE	P.	Part no.
Roof Cargo Container (Small)	12	A000 840 1562
Roof Cargo Container (Medium)	12	A000 840 1662
Roof Cargo Container (Large)	12	A000 840 1862
Roof Rack Basic Carrier	13	A212 890 0393
Sheepskin Wash Mitt	-	BQ 600 0005
Ski Bag (for inside)	-	A000 890 0711
Ski & Snowboard Rack, Deluxe	12	B6 685 1703
Ski & Snowboard Rack, Standard	12	B6 685 1702
UVS-100™ Sunshade	18	BQ 667 0035

Mercedes-Benz USA, LLC
One Mercedes Drive
Montvale, NJ 07645
1-800-FOR-MERCEDES
MBUSA.com

© 2009 Mercedes-Benz USA, LLC
A Daimler Company

All illustrations and specifications contained in this brochure are based on the latest product information available at the time of publication. Actual product offerings may vary from those shown or may be subject to availability delays or discontinuance. Mercedes-Benz reserves the right to make changes at any time, without notice, in colors, materials, equipment, specifications and models. Any variations in colors shown are due to reproduction variations of the printing process. Illustrations may include test situations. Some vehicles may be shown with non-U.S. equipment. Vehicles are shown with optional equipment.

Unsecured cargo can become hazardous in a collision. Always secure cargo using the floor-mounted tie-down hooks. Cargo nets and organizers are not intended to prevent objects of excessive weight and bulk from sliding or rolling in the event of a collision or sudden stop. Always drive with caution when driving with cargo.

Certain accessories may require professional installation and/or additional components to complete the installation in your vehicle. Please consult your authorized Mercedes-Benz dealer for specific information about automotive accessories. Speak with a representative at your local authorized Mercedes-Benz dealership for current pricing on Genuine Mercedes-Benz Accessories. Visit accessories.mbusa.com to shop online or call 1-800-FOR-MERCEDES (367-6372) to obtain the Lifestyle Collection catalog.