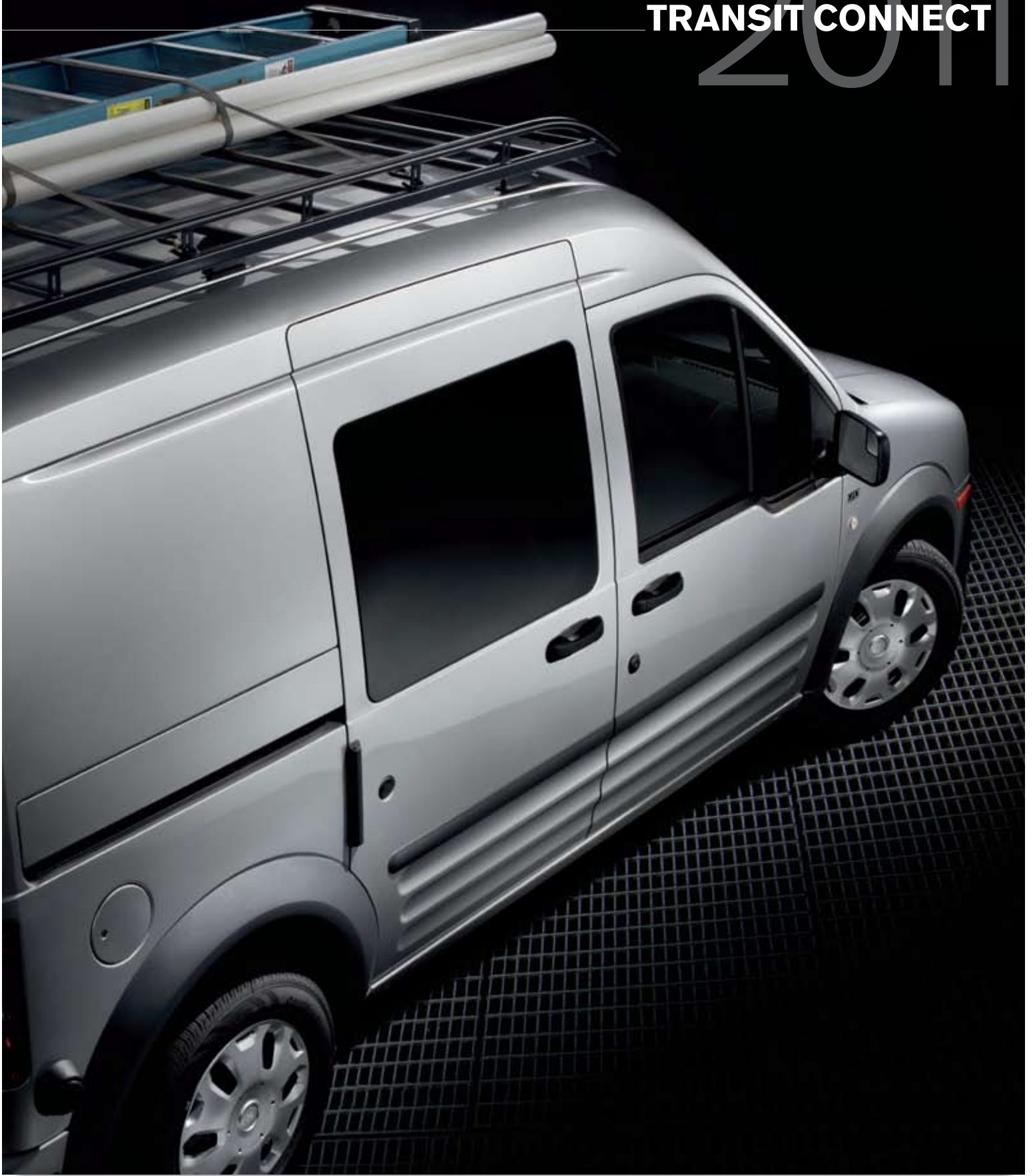


2011 TRANSIT CONNECT



ford.ca



best in class

8.9 combined
L/100 km

10.0 city/7.5 hwy./8.9 combined
(28/38/32 mpg)



2010 North American
Truck of the Year



Transit Connect XLT Van in Silver with available equipment.

exceeds your needs

Minivans. SUVs. CUVs. The one-of-a-kind Ford Transit Connect is the **right one to replace them all**. Available as an **XLT Van** and as an **XLT Wagon** or new **XLT Premium Wagon**, it combines the **room and versatility of a van** with the **efficiency of a large car**. It's right-sized and purpose-built to swallow cargo, sip gas¹ and park in tight spaces. And it does it all while conveying a professional image designed to help you and your business **stand out in a crowd**.

¹Class is Small Cargo Vans. Fuel consumption ratings based on Transport Canada approved test methods. Actual fuel consumption may vary. Vehicles throughout this catalogue may be shown with optional or aftermarket equipment.

2011 **TRANSIT CONNECT**

ford.ca





Transit Connect XLT Premium Wagon with available equipment.

fits you and a crew

Whether you're at work or play, **Transit Connect Wagon** is the perfect multitasking partner. There's plenty of **room for 5** with the standard **2nd-row 60/40 split-fold seat**. You can carry up to 2,220 L (78.4 cu. ft.) of cargo behind, or up to **3,361 L** (118.7 cu. ft.) when you fold it down. With the **new XLT Premium**, you also get enhanced cargo area trim including a **storage pocket** in the passenger-side rear door, cargo area **flip-open windows** and more. It all adds up to one very accommodating ride.



Transit Connect XLT Premium Wagon in Torch Red with available equipment.

2011 **TRANSIT CONNECT**

ford.ca





Transit Connect XLT with available equipment.

eases your drive

High style, quality materials, and plenty of storage make a great impression. Comfort and convenience features keep you at the top of your game. Some examples: **power front windows, door locks and heated sideview mirrors** are standard. Plus, the standard **automatic transmission** makes operation easier for everyone. And **standard air conditioning** lets you chill between appointments.



When activated while you're slowly backing up or parallel parking, the optional **Reverse Sensing System** automatically detects certain objects up to 1.8 m (6 ft.) behind the vehicle. It beeps more rapidly as you get closer.



A



B



C

An integrated driver's side **blind spot mirror (A)** is now standard on all Vans and Wagons.

When the vehicle is in Reverse, the optional new **rear view camera (B)** displays a full-colour image and sight lines on the rearview mirror.

The optional Ford Work Solutions™ **in-dash computer (C)** features Garmin® navigation, hands-free calling, a convenient touch screen, wireless keyboard and more.¹

¹Some features are unavailable while driving. Ford Work Solutions include Ford Licensed Accessories. See your Ford of Canada Dealer for limited warranty details.

2011 TRANSIT CONNECT

ford.ca



Transit Connect XLT Van in Frozen White with available equipment.



delivers protection and reliability

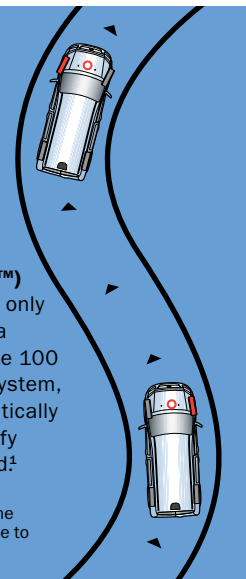
Transit Connect is engineered and tested to thrive in conditions that are harder, faster and tougher than most of its drivers will ever see. It's **Built Ford Tough®** on a rugged, **commercial vehicle platform**, with over 670,000 sold worldwide since 2003. Every Transit Connect comes equipped with front-seat side airbags in addition to the driver and front-passenger front airbags in our **Personal Safety System™** (PSS). In the event of a frontal collision, sophisticated sensors in the PSS analyze crash severity and occupant conditions to help customize the system's reaction and better protect a range of passengers.

Transit Connect is certified to **Ford Light Commercial Vehicle Durability Standards** – tested to 240,000 customer-equivalent km.

- Doors and accompanying hardware were tested over a cycle of door opening and slamming equal to 205 times a day for 2 years
- Parts vibration testing simulated the worst roads to help ensure solid, reliable performance and long parts life
- Prolonged exposure to extreme temperatures across 58 countries has proven its reliability in varying climates
- Wheels, tires, suspension knuckles, springs, shock absorbers and underbody structure were tested for taking on potholes and curbs

AdvanceTrac® with RSC® (Roll Stability Control™) is standard on Wagons and optional on Van. It's the only electronic stability control system in the class with a vehicle-roll motion sensor that measures the roll rate 100 times a second. Working with the Anti-Lock Brake System, traction control and yaw control, the system automatically determines how to apply individual brakes and modify engine power to help keep all 4 wheels firmly planted!*

*Remember that even advanced technology cannot overcome the laws of physics. It's always possible to lose control of a vehicle due to inappropriate driver input for the conditions.



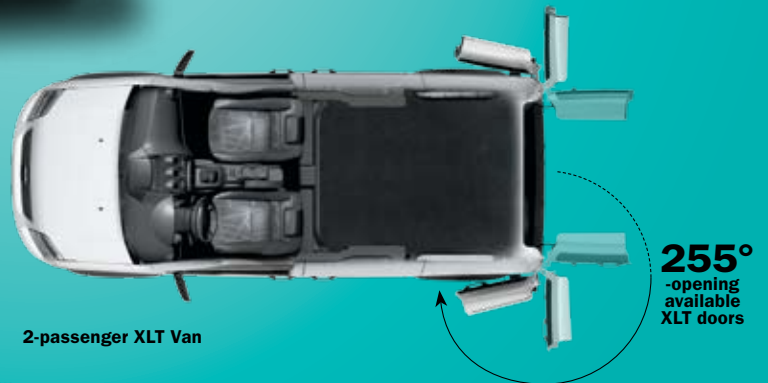
2011 TRANSIT CONNECT

ford.ca



sized just right

Transit Connect Van provides 2 seats up front, a **huge cargo box** with all-around access, and near-vertical sidewalls so you can make the best use of all that space. **Sliding doors on both sides** of the van let you load and unload the front half of the cargo area, or help position long items being loaded from the rear. Out back, **50/50 split rear doors** swing 180° in standard trim, or available doors on articulated hinges (shown below) swing a full 255°. You've got 3 options for the van's door panels: no glass, rear glass only, or side- and rear-door glass. Inside, an expansive load floor plus **low side and rear liftover heights** help take the stress out of loading and unloading. Transit Connect is always ready for business.



2-passenger XLT Van



2011 TRANSIT CONNECT

ford.ca



holds **3,670 L**
& up to **708 kg¹**

dimensions & capacities

exterior mm (in.)

A. Front track	1,506 (59.3)
B. Overall width with mirrors	2,113 (83.2)
C. Rear door opening height	1,323 (52.1)
D. Rear door opening width at floor	1,275 (50.2)
E. Rear track	1,552 (61.1)
H. Side door opening width	815 (32.1)
I. Side door opening height	1,191 (46.9)
K. Overall height (at curb weight)	2,014 (79.3)
L. Ground clearance	182 (7.2)
M. Load floor height (at curb weight)	587 (23.1)
N. Wheelbase	2,911 (114.6)
O. Overall length	4,588 (180.6)
Turning diameter m (ft.; curb-to-curb)	11.8 (39.0)

cargo area mm (in.)

F. Maximum cargo length at floor	2,057 (81.0)
G. Floor width at wheelhouse	1,222 (48.1)
J. Maximum cargo height	1,364 (53.7)
Wagon cargo volume behind 2nd row L (cu. ft.)	2,220 (78.4)
Wagon cargo volume behind 1st row (2nd-row seats folded) L (cu. ft.)	3,361 (118.7)
Van cargo volume behind front seats L (cu. ft.)	3,670 (129.6)

capability kg (lbs.)¹

Cargo Van GVWR	2,720 (5,005)
Wagon GVWR	2,252 (4,965)
Maximum payload	708 (1,562)

passenger area mm (in.)

1st row

Head room	1,298 (51.1)
Shoulder room	1,382 (54.4)
Hip room	1,290 (50.8)
Leg room	1,029 (40.5)

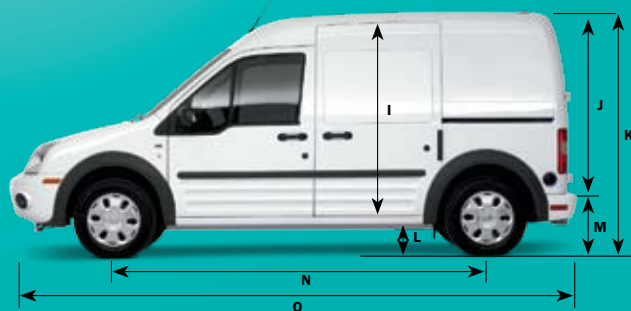
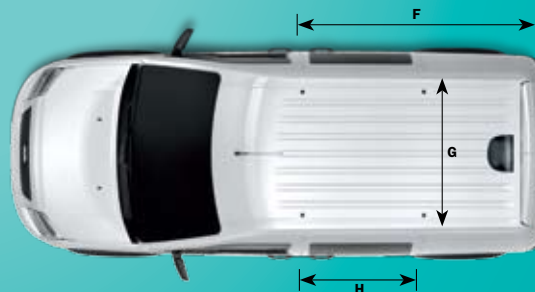
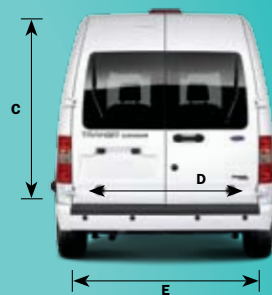
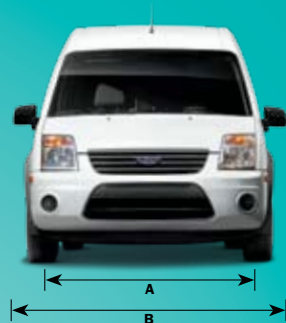
2nd row (wagon)

Head room	1,283 (50.5)
Shoulder room	1,514 (59.6)
Hip room	1,519 (59.8)
Leg room	978 (38.5)

passenger volume L (cu. ft.)

Cargo Van	1,843 (65.1)
Wagon	3,741 (132.1)

¹When properly equipped. Van GVWR is 2,270 kg (5,005 lbs.). Load rating represents maximum allowable weight of people, cargo and body equipment combined, and is reduced by the weight of the optional equipment. Cargo and load capacity limited by weight and weight distribution.



STANDARD FEATURES

MECHANICAL

2.0L DOHC Duratec® I-4 engine
4-speed automatic transmission with overdrive
55.8 L fuel tank capacity
150-amp alternator
500 Cold Cranking Amps, 50-amp-hr. maintenance-free battery
Front-wheel drive (FWD)
Power front disc/rear drum brakes with Anti-Lock Brake System (ABS)
Rack-and-pinion steering
Single-note horn
Suspension – Front: independent MacPherson-strut with stabilizer bar; rear: multileaf spring with stabilizer bar

SEATING

Driver and front-passenger cloth bucket seats

INTERIOR

12V powerpoints (1 in front, 1 in rear cargo area)
Centre console with 2 cupholders, 2 stowage bins, and 1 additional folding cupholder
Cruise control
Dome lighting (front, middle and rear)
Driver sun visor with note strap
Dual front map lights
Front and rear cargo area vinyl floor covering
Front overhead storage shelf with net
Full-length moulded cloth headliner
Instrument panel with speedometer, odometer, trip odometer, tachometer, fuel gauge, engine coolant temperature and digital clock
Manual air conditioning
Map pocket with bottle holder in driver and front-passenger doors (excluding XLT Wagon)
Smoker's Package includes ashtray and lighter
Tilt/telescoping steering column

EXTERIOR

15-in. steel wheels with 6-spoke wheel covers
P205/65R15 BSW tires
180°-opening rear doors
Black door handles
Body-colour bumpers
Daytime running lamps
Dual sliding side doors (solid panels on Van; fixed glass windows on Wagon)
Full-size spare tire
Gray bodyside mouldings
Gray wheel-lip mouldings
Locking fuel-filler door
Rear fog lamps
Windshield wipers – Front variable-speed; rear 2-speed (included on Van and Wagons when equipped with rear glass)

SAFETY & SECURITY

Personal Safety System™ for driver and front passenger includes dual-stage front airbags¹; safety belt pretensioners, safety belt energy-management retractors, safety belt usage sensors, driver's seat position sensor, crash severity sensor, restraint control module and Front-Passenger Sensing System
Front-seat side airbags¹
Collapsible steering column
SecuriLock® Passive Anti-Theft Engine Immobilizer System
Side-intrusion door beams
Tire Pressure Monitoring System (excludes spare)

ESTIMATED FUEL CONSUMPTION² L/100 km (mpg)

Engine	Transmission	City	Highway	Combined
2.0L Duratec I-4	4-speed automatic	10.0 (28)	7.5 (38)	8.9 (32)

¹Always wear your safety belt and follow airbag warning label instructions. ²Actual mileage may vary with driving habits. Fuel consumption ratings based on Transport Canada approved test methods.

STANDARD FEATURES



XLT Van

Equipped with all standard features, plus:

MECHANICAL

4.20:1 final drive ratio

SEATING

Driver's seat with manual 6-way adjustment (fore/aft/up/down/recline, plus lumbar) with armrest and map pocket behind seat

Passenger seat with manual 4-way adjustment (fore/aft/recline)

INTERIOR

AM/FM stereo with single-CD player and 2 speakers

Auxiliary audio input jack in centre console

Power Group – Power windows, locks and sideview mirrors; Remote Keyless Entry System with 2 key fobs

EXTERIOR

3-bar grille in gray with locking hood latch

Black, power heated and adjustable, manual flat-folding sideview mirrors with manual integrated blind spot mirrors

XLT badge



XLT Wagon

Equipped with select XLT Van features, plus:

MECHANICAL

AdvanceTrac® with RSC® (Roll Stability Control™)

SEATING

2nd-row manual 60/40 split-fold
3-passenger cloth seat

INTERIOR

AM/FM stereo with single-CD player and 4 speakers

Front passenger area carpet floor covering

Rear cargo area vinyl floor covering

EXTERIOR

Body-colour mirrors and door handles

Chrome grille

Defroster Package – Rear-window defroster

Dual sliding side doors with fixed privacy glass

Front fog lamps

Kombi rear bumper plastic insert

Rear-door windows with privacy glass



XLT Premium Wagon

Equipped with select XLT Wagon features, plus:

INTERIOR

C- and D-pillar trim up to beltline

Rear wheelhouse covers

Storage pocket in passenger-side rear door

EXTERIOR

Cargo area manual flip-open side windows



XLT Taxi Package

Equipped with select XLT Wagon features, plus:

MECHANICAL

2 additional fleet keys for a total of 4 keys

Heavy-duty battery

INTERIOR

2nd-row air/heat blower with passenger controls

Deletes rear 12V powerpoint

Full vinyl floor covering

Grab handle on B-pillars

Repositioned 2nd-row seat for more leg room

Vinyl seats

EXTERIOR

3-bar grille in gray with locking hood latch

Black door handles

Black, power heated and adjustable, manual flat-folding sideview mirrors with manual integrated blind spot mirrors

Body-colour-painted bumpers (gray bumpers when ordered in yellow) and black wheel-lip mouldings

Cargo area windows with privacy glass

Fog lamp delete

Roof access hole

Solar-tinted glass (all around)

Van: XLT



XLT Van with available equipment.



XLT Van in Panther Black with available and aftermarket equipment.

2011 TRANSIT CONNECT

ford.ca



Van: XLT

OPTIONAL FEATURES

XLT VAN AVAILABLE OPTIONS

- 255°-opening rear doors
- Additional keys and key fobs (2)
- AdvanceTrac® with RSC® (Roll Stability Control™)
- All-weather floor mats – 1st-row
- Engine block heater
- Premium carpeted floor mats – 1st-row
- Rear-door windows with privacy glass
- Rear view camera
- Remote Start System
- Reverse Sensing System
- Side-door windows with privacy glass and rear-door windows with privacy glass
- Splash guards

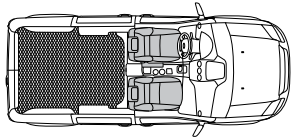
FORD WORK SOLUTIONS™

- Crew Chief™ (not available with in-dash computer)
- In-dash Windows® CE computer with touch screen (not available with Crew Chief)
- Tool Link™ (requires in-dash computer; not available with Cargo Van with side- and rear-door glass)

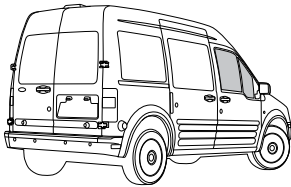
PACKAGES

- CNG/LPG Engine Prep Package** – Includes hardened engine intake and exhaust valves and hardened intake and exhaust valve seats
- Spare Accessory Wiring Harness** – Includes 2 engine compartment blunt-cut wires, B+ wire, ignition/run wire, interior lamps wire, and 2 instrument panel blunt-cut wires (requires AdvanceTrac with RSC)

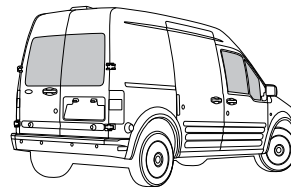
Windows is a registered trademark of Microsoft Corporation.



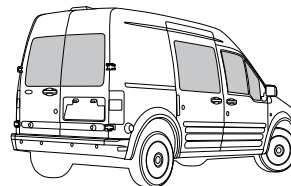
2-passenger seating



Optional – no rear-door or side-door windows



Optional – rear-door windows

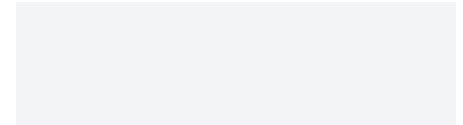


Optional – rear-door and side-door windows



15-in. Steel Wheels
with 6-Spoke Wheel Covers
Standard

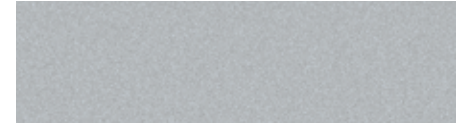
EXTERIOR



Frozen White



Torch Red



Silver Metallic

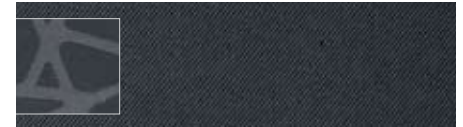


Dark Blue



Panther Black Metallic

INTERIOR



Gray Cloth
Standard

EXTERIOR COLOURS

EXTERIOR COLOURS	INTERIOR COLOUR
Frozen White	●
Torch Red	●
Silver Metallic	●
Dark Blue	●
Panther Black Metallic	●

INTERIOR: ● Gray Cloth

Colours are representative only. See your Ford of Canada Dealer for actual paint/trim options.



Wagon: XLT & XLT Premium



XLT Wagon with available equipment.



XLT Wagon in Frozen White with available equipment.

2011 TRANSIT CONNECT

ford.ca



Wagon: XLT & XLT Premium

OPTIONAL FEATURES

XLT WAGON AVAILABLE OPTIONS

- 255°-opening rear doors
- Additional keys and key fobs (2)
- All-weather floor mats – 1st and 2nd rows
- Engine block heater
- Premium carpeted floor mats – 1st and 2nd rows
- Rear view camera
- Remote Start System
- Reverse Sensing System
- Splash guards

FORD WORK SOLUTIONS™

- Crew Chief™ (not available with in-dash computer)
- In-dash Windows® CE computer with touch screen (not available with Crew Chief)

PACKAGES

CNG/LPG Engine Prep Package – Includes hardened engine intake and exhaust valves and hardened intake and exhaust valve seats

Spare Accessory Wiring Harness – Includes 2 engine compartment blunt-cut wires, B+ wire, ignition/run wire, interior lamps wire, and 2 instrument panel blunt-cut wires

Windows is a registered trademark of Microsoft Corporation.

XLT WAGON PREMIUM AVAILABLE OPTIONS

- Additional keys and key fobs (2) (not available with Taxi Package)
- All-weather floor mats – 1st and 2nd rows
- Engine block heater
- Premium carpeted floor mats – 1st and 2nd rows
- Rear view camera
- Remote Start System
- Reverse Sensing System (not available with Mobility Prep Package)
- Splash guards

FORD WORK SOLUTIONS

- Crew Chief (not available with in-dash computer and Taxi Package)
- In-dash Windows CE computer with touch screen (not available with Crew Chief and Taxi Package)

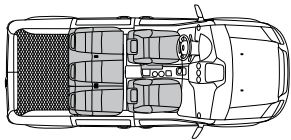
PACKAGES

CNG/LPG Engine Prep Package – Includes hardened engine intake and exhaust valves and hardened intake and exhaust valve seats

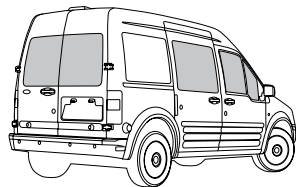
Mobility Prep Package – Includes heavy-duty battery and upfitter wiring harness (not available with Reverse Sensing System and 255°-opening rear doors), grab handle on B-pillars, 2nd-row air/heat blower with passenger controls, solar tinted glass (all around)

Spare Accessory Wiring Harness – Includes 2 engine compartment blunt-cut wires, B+ wire, ignition/run wire, interior lamps wire, and 2 instrument panel blunt-cut wires

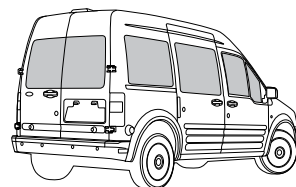
Taxi Package – Includes repositioned 2nd-row seat, heavy-duty battery, 2nd-row air/heat blower with passenger controls, grab handle on B-pillars, vinyl seats, body-colour-painted bumpers (gray bumpers when ordered in yellow), black wheel-lip mouldings, roof access hole, deletes fog lamps, deletes rear 12V powerpoint



5-passenger seating



Standard – rear-door and side-door windows (XLT Wagon)

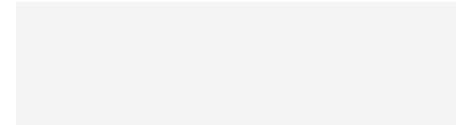


Standard – rear-door, side-door and cargo area windows (XLT Premium Wagon)



15-in. Steel Wheels with 6-Spoke Wheel Covers Standard

EXTERIOR



Frozen White



School Bus Yellow



Torch Red



Silver Metallic

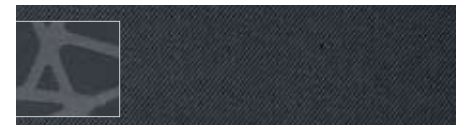


Dark Blue



Panther Black Metallic

INTERIOR



Gray Cloth
Standard on XLT and XLT Premium



Gray Vinyl
Optional on XLT Premium

EXTERIOR COLOURS

EXTERIOR COLOURS	INTERIOR COLOURS
Frozen White	● ■
School Bus Yellow ¹	■
Torch Red	● ■
Silver Metallic	● ■
Dark Blue	● ■
Panther Black Metallic	● ■

INTERIORS: ● Gray Cloth ■ Gray Vinyl¹

¹Requires Taxi Package.

Colours are representative only. See your Ford of Canada Dealer for actual paint/trim options.



upfits your way

If there's one thing that sets Transit Connect apart, it's **versatility**. This becomes even more apparent when it's upfitted with durable bulkhead partitions and **flexible interior storage systems**.

The available modifications or upfits include: Wire, steel and solid bulkheads; racks and bins shelving units, interior cargo packages; drawer storage cabinets; refrigeration units, catering and food service packages; rooftop ladder racks; utility carriers; window security screens and more.

The suppliers listed below are participants in either Ford of Canada's **Pool Account** or **Ship-Thru Programs** and can help make your Transit Connect the perfect vehicle for your business needs. Please contact your local Ford of Canada Dealer for complete details.

ConvExpert
Farmbro
GW Anglin Van & Truck Equipment
Malley Industries Inc
Masterack Crown
Vanterior Truck Outfitters



Upfitters and authorized Ship-Thru modifiers are responsible for maintaining compliance certification of the modified vehicle. The Ford New Truck Limited Warranty and any government certification made by Ford shall cover only the vehicle as manufactured by Ford and shall not extend to any addition, modification or change of or to the vehicle made by the upfitter or Ship-Thru modifier.

2011 **TRANSIT CONNECT**

ford.ca



Ford Custom Accessories



Splash Guards



Soft Cargo Organizer (Large and Standard Sizes)
(Standard Size Shown)



Portable Navigation Systems by Garmin®¹



Keyless Entry Keypad



All-Weather Floor Mats



Racks and Carriers by THULE®¹

Also Available

Electronics

Remote Start Systems

Wiper De-Icer and Debris Cleaner by Wiper Shaker¹

Exterior

Side Window Deflectors

Hood Deflector

Rear Window Grilles

Roof Cross Bars

Roof Cargo Basket

Interior

Soft Cargo Cooler Bag

Premium Carpeted Floor Mats

Cargo Net by Las-Stik¹

¹Ford Licensed Accessories.

²Limited availability. See your local Ford of Canada Dealer for details.

Garmin is a registered trademark of Garmin Ltd.
THULE is a registered trademark of Thule Sweden AB.



Custom Graphics^{1,2}



Ford of Canada warrants that its authorized Dealers will repair or replace any Genuine Ford Accessory that is properly installed by the authorized Dealer that sold the accessory and found to be defective in factory-supplied materials or workmanship. The accessory will be warranted for whichever provides you the greatest benefit: 12 months/20,000 km (whichever occurs first), or the remainder of your 36-month/60,000-km (whichever occurs first) Basic Coverage in the New Vehicle Limited Warranty. Contact your local Ford of Canada Dealer for details.

Ford Licensed Accessories (FLA) are warranted by the accessory manufacturer's limited warranty. The warranty coverage will vary by accessory manufacturer. Ford Licensed Accessories are fully designed and developed by the accessory manufacturer and have not been designed or tested to Ford Motor Company engineering requirements. Contact your local Ford of Canada Dealer for details regarding the accessory manufacturer's limited warranty and/or for a copy of the FLA product limited warranty offered by the accessory manufacturer.

2011 TRANSIT CONNECT

ford.ca



Our commitment to you... Peace-of-Mind Protection

- **Basic Coverage:** 3 years/60,000 km
- **Powertrain Limited Warranty:** 5 years/100,000 km
- **Corrosion Warranty:** 5 years/unlimited distance
- **Roadside Assistance:** 5 years/100,000 km

Certain conditions apply. For more information on these warranties and coverages, ask your local Ford of Canada Dealer or visit ford.ca.

Ford Extended Service Plan

Help protect your investment and add to your peace of mind by complementing your vehicle purchase or lease with a Ford Extended Service Plan (ESP). Ford ESP protects you against unexpected repair costs after your New Vehicle Basic Warranty expires by covering many vehicle components. Enjoy the drive even more by complementing your ESP with a prepaid maintenance plan, which covers all required scheduled maintenance for your vehicle, plus 8 wear items. See your Ford of Canada Dealer for details.

Ford Credit

Get the ride you want. Whether you plan to lease or finance, you'll find the choices that are right for you at Ford Credit. Ask your local Ford of Canada Dealer for details or check us out at fordcredit.ca.

For prompt, courteous answers to your questions:

Ford Customer Relationship Centre
1-800-565-3673

Ford Credit Customer Service Centre
1-877-636-7346



Drive smart.

With available exclusives like the latest Ford SYNC^{®1} and Ford Work Solutions,[™] Ford Trucks offer you more innovative technology and productivity tools than ever before.



Drive green.

Ford offers 30 vehicles that get 8.3L/100 km (34 mpg) highway or better.²



Drive quality.

The ultimate proving ground for Ford's quality commitment is your driving experience. Drive one and you'll feel it.



Drive safe.

Ford has received more NHTSA 5-Star ratings than any other brand... ever.³

¹SYNC not available on 2011 Transit Connect. ²2011 and 2010 model year ratings: 8.3L/100 km highway and 12.7L/100 km city or better on 30 vehicles, based on powertrain and body style. Fuel consumption ratings based on Transport Canada approved test methods. Actual fuel consumption may vary based on road conditions, vehicle loading, vehicle equipment and driving habits. ³Historic brand totals. 2011 model year to be tested. Star ratings are part of the U.S. Department of Transportation's Safercar.gov program (www.safercar.gov).

Please note: The electronic version of the Ford of Canada vehicle brochure is a condensed version of the original printed version.

Competitive comparisons are based on 2010/2011 competitive models, publicly available information and Ford data at the time of printing of the 2011 original printed version. Some features discussed may be optional. Vehicles shown may contain optional equipment. Features shown may be offered only in combination with other options or subject to additional ordering requirements or limitations. Dimensions shown may vary due to optional features and/or production variability. Following publication of the 2011 original printed brochure, certain changes in standard equipment, options and the like, or product delays may have occurred which would not be included in these pages. Your Ford of Canada Dealer is your best source for up-to-date information. Ford Motor Company of Canada, Limited, reserves the right to change product specifications at any time without incurring obligations. Colours may not be exactly as illustrated. Please see your sales consultant for specific colour and model availability. Please visit your local dealer or ford.ca for complete vehicle details.

ford.ca



2011 TRANSIT CONNECT