

NISSAN LEAF® FAQs

Does the Nissan LEAF use gasoline?

No, never. LEAF runs off of 100% electric battery power, no gas needed. In fact, it doesn't even have a tailpipe.

Will the price include the battery pack? Or will there be an option to rent/lease the battery pack?

The total cost of the vehicle includes the battery pack. Both lease and purchase options are available for the vehicle, but no option to rent/lease just the battery pack.

Can I charge if I'm not at home?

Yes. Across the country you'll find a public infrastructure of charging stations. Visit <http://nissan.chargepointportal.net/external/nissanmap/> to find a station near you.⁹

Will there be more public charging stations in the future?

The public charging network is expanding every day, with 15,000 stations expected to be in place by 2014. Nissan is also beginning to roll out DC quick-charging stations. These charge stations will be capable of giving you an 80% charge in just 30 minutes.⁹

Am I required to buy the home charging station when I purchase LEAF?

No. However, the home charging dock is recommended.

How long will it take to charge my LEAF at home?

With the 240-volt home charging dock, your MY13 LEAF will be fully charged in about 4 hours (SV and SL trims, available S trim) or 7 hours (S trim).⁵

Will charging my LEAF increase my electricity bill?

The average driver should only see a moderate bump in their monthly electricity bill – and if you charge during off-peak hours, even less – though the savings in gas money should more than make up for it.

Can I drive LEAF on the freeway?

Of course! With instant torque and speeds up to 90 mph, LEAF is freeway-ready. Even better, LEAF qualifies for a single-occupancy HOV sticker in select states, so you can use the carpool lane any time you want.¹

What happens if I run out of battery?

LEAF comes with helpful tools that keep you aware of your battery level at all times. However, for added piece of mind, every LEAF comes with three years of complimentary roadside assistance.⁴

Does the battery come with a warranty?

Yes, LEAF's advanced battery comes with an 8-year/100,000-mile warranty.⁷

Does LEAF have the same safety features as a conventional car?

Yes. LEAF comes with a comprehensive list of safety equipment, including six standard air bags¹⁴ and advanced safety features like Vehicle Dynamic Control (VDC)¹⁶ and Traction Control System (TCS).

visit NissanUSA.com/leaf

And follow Nissan on:



Los folletos de Nissan también están disponibles en español. Para descargar el PDF, visita: NissanUSA.com/folletos-espanol



SHIFT_

2013
LEAF®

Zero Emission™



SHIFT_

¹The rebates, incentives and additional perks referenced are for informational purposes only. This information does not constitute tax or legal advice. All persons considering use of available rebates, incentives and additional perks should consult with their own tax professional to determine eligibility, specific amount of benefits available, if any, and further details. These rebates, incentives and additional perks are not within Nissan's control and are subject to change without notice. Interested parties should confirm the accuracy of the information before relying on it to make a purchase. ²National Highway Transportation Administration, 2009. ³Based upon EPA derived MPG-based two-cycle tests using varying driving conditions and climate controls, the EPA has rated the Nissan LEAF[®] a driving range of 73 miles. Battery capacity decreases with time and use. Actual driving range will vary depending upon driving/charging habits, speed, conditions, weather, temperature, and battery age. ⁴See your Nissan dealer and read the Roadside Assistance section of your Warranty Information Booklet for complete details and eligibility requirements. ⁵Approximate time, with available 240-V home charging dock, purchased separately. ⁶CARWINGS[®] requires compatible 2G GSM/GPRS cellular network provided by independent cellular companies not within Nissan's control. 2G cellular network not available in all areas. In areas with 2G network coverage, signal strength may vary and/or not be available at all times. Cellular technology is evolving, and changes to cellular networks may affect future CARWINGS[®] functionality. Ask your cellular network carrier for details on anticipated 2G network availability in your area and how this may affect your planned usage. Should a cellular provider terminate/further restrict network service, CARWINGS service may be suspended or terminated without notice or liability to Nissan and/or its agents. Nissan not responsible for equipment replacement or upgrades, or associated costs, that may be required for continued CARWINGS operation due to cellular network changes. Certain remote functions require compatible smartphone, not included with vehicle. CARWINGS subscription service requires owner consent to activate. Subscription service for first 36 months included in vehicle price. Subscription available for purchase thereafter. Standard text rates and/or data usage may apply to CARWINGS communications received by email or SMS/text message. ⁷The comprehensive Nissan LEAF lithium-ion battery warranty includes coverage for defects in materials or workmanship for 8 years/100,000 (whichever occurs first) miles as well as protection against capacity loss below 9 bars of capacity (out of 12) as shown on the LEAF's capacity gauge for a period of 5 years/60,000 miles (whichever occurs first). ⁸Mileage estimates only. Range will vary depending upon driving/charging habits, speed, conditions, weather, temperatures, and battery age. ⁹Availability/accessibility of charging stations is not guaranteed. ¹⁰Availability of specific features is dependent upon the phone's Bluetooth[®] support. Please refer to your phone Owner's Manual for details. The Bluetooth[®] word mark and logos are owned by Bluetooth SIG, Inc., and any use of such marks by Nissan is under license. ¹¹For tailpipe emissions. ¹²Parking aid/convenience feature. Cannot completely eliminate blind spots. May not detect every object and does not warn of moving objects. Always check surroundings before moving vehicle. Not a substitute for proper backing procedures. Always turn to check what is behind you before backing up. ¹³Never program while driving. GPS mapping may not be detailed in all areas or reflect current road regulations. ¹⁴Air bags are only a supplemental restraint system; always wear your seat belt. Even with the occupant-classification sensor, rear-facing child restraints should not be placed in the front-passenger's seat. Also, all children 12 and under should ride in the rear seat properly secured in child restraints, booster seats, or seat belts according to their size. Air bags will only inflate in certain accidents; see your Owner's Manual for more details. ¹⁵Post-consumer recycled materials will exceed 30%. ¹⁶VDC, which should remain on when driving except when freeing the vehicle from mud or snow, cannot prevent accidents due to abrupt steering, carelessness, or dangerous driving techniques. Always drive safely. ¹⁷Driving is serious business and requires your full attention. Do not operate any devices connected to the USB or auxiliary audio input jack while driving. ¹⁸Tire Pressure Monitoring System is not a substitute for regular tire pressure checks. ¹⁹Vehicle must be on for the Easy-Fill Tire Alert to operate. ²⁰Required SiriusXM Satellite Radio and NavTraffic subscriptions sold separately after trial period. Installation costs, one-time activation fee, other fees and taxes will apply. NavTraffic available in select markets. Services available only to those 18 or older in the 48 contiguous states and D.C. Fees and programming subject to change. Subscriptions governed by Customer Agreement available at siriusxm.com. ©2013 Sirius XM Radio Inc. Sirius, XM and all related marks and logos are trademarks of Sirius XM Radio Inc. ²¹Parking aid/convenience feature. Cannot completely eliminate blind spots. May not detect every object and does not warn of moving objects. Always check surroundings before moving vehicle. Not a substitute for proper backing procedures. Always turn to check what is behind you before backing up. ²²Covered by Nissan's Limited Warranty on Genuine Nissan Accessories for the longer of 12 months/12,000 miles (whichever occurs first) or the remaining period under the 3-year/36,000-mile (whichever occurs first) Nissan New Vehicle Limited Warranty. Terms and conditions apply. See Warranty Information Booklet for details. ²³Cargo and load capacity limited by weight and distribution. Always secure all cargo. ²⁴Final specifications subject to change prior to start of sale. ²⁵Always give your full attention to driving. Avoid operating your iPod[®] in such a way that you can be distracted during vehicle operation. See dealer for details. iPod[®] is a registered trademark of Apple, Inc. All rights reserved. iPod[®] not included. Bose[®] is a registered trademark of The Bose Corporation. Pandora[®] is a registered trademark of Pandora Media. HomeLink[®] is a registered trademark of Johnson Controls Technology Company. Facebook[®] is a registered trademark of Facebook, Inc. Twitter[®] is a registered trademark of Twitter, Inc. YouTube[®] is a registered trademark of Google Inc.

All illustrations, photographs and specifications in this publication are based on the latest product information available at the time of printing. Some vehicles shown with optional equipment. See the actual vehicle for complete accuracy. Availability and delivery times for particular models or equipment may vary. Nissan North America, Inc. reserves the right to make changes at any time, without prior notice, in prices, colors, materials, equipment, specifications, and models and to discontinue models or equipment. Specifications, options and accessories may differ in Hawaii, U.S. territories and other countries.

PRINTED IN USA.

IMAGINE WHAT YOU'LL BE SAVING.

How much money would you save if you never had to stop for gas again? And how much time would you save, zipping along in the carpool lane? LEAF® isn't just a planet-friendly way to get around, it's the 100% electric car that works for you. You may even enjoy tax benefits and lower maintenance costs. And with five doors and seating for five, LEAF makes driving electric an everyday reality. Plus loads of fun – because freedom from the pump comes with amazing acceleration and a corner-hugging ride. Did we mention all the great perks, too? The 2013 100% electric Nissan LEAF. Nissan. Innovation that excites.™

- never buy gas again
- income tax credit up to \$7,500¹
- additional cash incentives (select states)¹
- carpool lane access¹
- no more oil changes or smog checks
- free EV parking¹

LEAF drivers enjoy \$8,500 in average fuel savings, plus so much more. Scan the code to find out all the ways you can save.¹

(Based on 2012 U.S. EPA information over 5 years compared to the average new vehicle.)



The online LEAF savings calculator figures in your commute, average cost of gas in your area, tax benefits and more. Just scan the code or go to bit.ly/leafcalc



Nissan LEAF SV shown in Blue Ocean with optional equipment.

CHARGE. DRIVE. REPEAT. IT'S THAT EASY.

On average, Americans drive less than 29 miles a day.²
NISSAN LEAF gets you 2½ times that on a single charge.³

Just plug it in to charge overnight and in the morning you'll be ready to go, with tools to help you manage your range along the way. Of course, driving at moderate, more constant speeds is always a good idea. You can even switch to Eco mode to improve your range up to 10% in certain conditions. With LEAF, the little things can make a big difference. And for added peace of mind, Nissan provides three years of complimentary roadside assistance with every LEAF.⁴



“Fill up” at home. Faster than ever.

With the 240-volt home charging dock, LEAF SV and SL trims charge in about 4 hours while the S trim charges in a standard 7 hours – or 4 with the available S Charge Package.⁵ All you have to do is plug it in, like you would your laptop or cell phone. And to take advantage of off-peak rates, you can set a charging timer right on the dash, remotely from a mobile device or computer, or from your smartphone with the CARWINGS[®] app.⁶

battery warranty

8 years | 100,000 miles⁷



The comprehensive Nissan LEAF lithium-ion battery warranty also protects against capacity loss below 9 bars of capacity (out of 12) as shown on the LEAF's capacity gauge for a period of 5 years/60,000 miles (whichever occurs first).⁷

Scan this code to watch a video on how to get your home charging dock installed or go to bit.ly/leafdock



eco drive indicator

power meter

trip computer

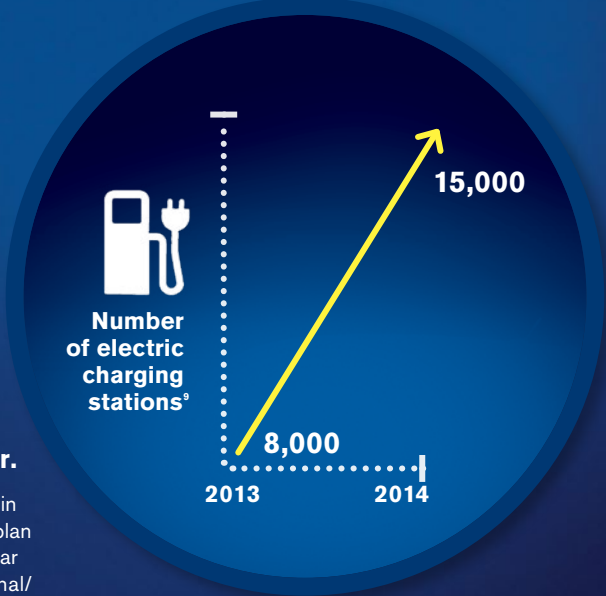
estimated range

The tools to go the distance.

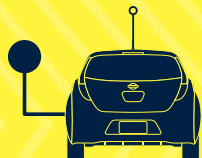
There are plenty of tools right on your dashboard to help you get the most out of every charge. You'll always see your battery level, and how many miles remain in your driving range.⁸ Driving efficiently? You won't have to guess. The power meter shows how much power you're using – and generating, thanks to LEAF's regenerative braking system that captures the energy created while you coast or brake, and recycles it back into the power supply. And if you're doing really well, you'll grow a virtual forest on the Eco drive indicator.

Charge on the go. In more places than ever.

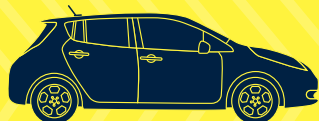
With approximately 15,000 public charging stations that will be in place by 2014, range anxiety is a thing of the past. You can even plan trips in your LEAF based on the availability of charging stations near your destination. Visit <http://nissan.chargepointportal.net/external/nissanmap/> to find a ChargePoint station near you.⁹



A day in the life of NISSAN LEAF



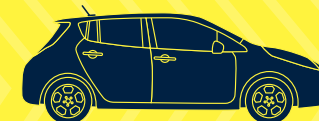
Wake up with a full tank. Fully charged and remotely pre-heated or cooled (one way to help extend range), LEAF is ready. Let's go!



Woosh! LEAF has speeds up to 90 mph, and 100% available torque right off the line.



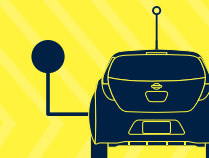
Get places faster with single occupancy access to the carpool lane. Your reward for driving electric (select states only).¹



Thanks to regenerative brakes, LEAF charges anytime you slow down. Red lights are your new best friend.³



Take that important call with Bluetooth.¹⁰ Then run those errands. You've got 47 miles left to spare and two nearby charging stations, shown on the handy range indicator.⁸



Just another day of driving electric. No gas, no emissions.¹¹ Then charge at home during off-peak hours while you sleep.

EVERYTHING YOU WANT. LIKE SEATING FOR FIVE AND CUP HOLDERS, TOO.

Inside LEAF you'll find five seats and plenty of smart storage throughout. Plus all the high tech features you'd expect from a car this innovative, like the new Around View® Monitor¹² and Bose® audio system, Bluetooth^{®10} and Pandora[®] connectivity, and an advanced navigation system that even displays nearby charging stations.^{9, 13} And six standard air bags to help keep you safe.¹⁴ Of course we didn't forget the extras, like cup holders and heated front and rear seats with fabrics made from recycled materials.¹⁵ Or go for the new black leather-appointed seats exclusive to the SL trim. All this, and 100% electric, too.

Energy-efficient Bose® Audio System

Bose came on board with their own energy-efficient solution designed just for LEAF. An ultra-lightweight, compact, energy-saving speaker system with the concert-hall sound Bose is known for. Thank you, Bose engineers.

Around View® Monitor¹²

Park with the help of a virtual 360° bird's-eye view, thanks to four wide-angle cameras located at the front, back and sides of the vehicle. Now you can snag that space right in front – where LEAF should be.





"I have absolutely no idea what the price of a gallon of gas is."

– Shannon | Windermere, FL



"I love the LEAF because it is the cheapest car to operate of ANY car I have EVER owned."

– Murray | Tulsa, OK



"We wake up every morning to a full charge and never run out... We only go to the gas station to clean the windshield."

– Daniel | Marina Del Rey, CA



People everywhere are talking about LEAF. Over 10,000 drivers across the country have made LEAF part of their daily lives. And the love for LEAF has gone global. In fact, it's the best-selling electric car in the world, with over 46,000 owners and over 100 million gas-free miles driven. Go to bit.ly/leafreviews to see what owners are saying about their LEAF.



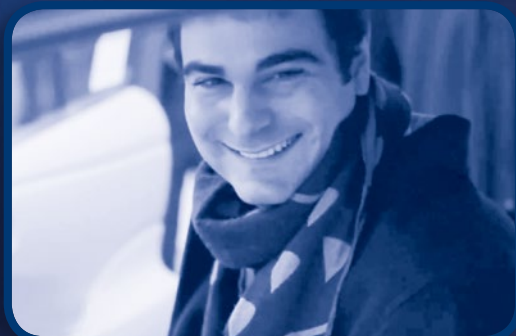
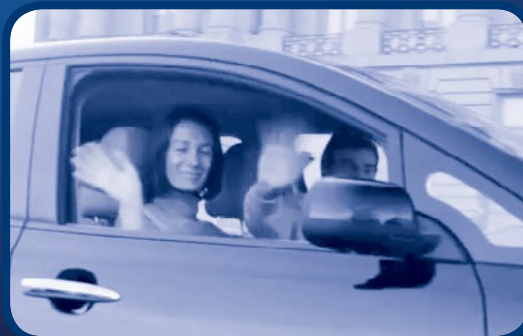
"The car is saving me tons of money on gas and maintenance, and electric costs are minimal."

– Ken | Mesa, AZ



"I bought my LEAF as an experiment as a second car. I now drive it 95% of the time."

– Jim | Seattle, WA



"I knew the LEAF would be energy efficient; I didn't expect it to be so much fun to drive."

– Rita | Fountain Hills, AZ

To see more owner stories and videos go to bit.ly/leafowners



GET THE LEAF® YOU WANT. ANY WAY YOU WANT IT.

CHOOSE FROM THESE TRIM LEVELS

S

- 80 kW AC synchronous electric motor
- 24 kWh lithium-ion (Li-ion) battery
- Zero Emissions Vehicle (ZEV)
- Front and rear disc brakes with regenerative braking system
- 16" Steel wheels with wheel covers
- Vehicle Dynamic Control (VDC)¹⁶ with Traction Control System (TCS)
- Portable trickle-charge cable
- Normal charge port
- Charge port light and lock
- Nissan Intelligent Key[®] with Push Button Start
- Heated front and rear seats
- Heated leather-wrapped steering wheel
- Automatic Temperature Control (ATC)
- 60/40 Split fold-down rear seats with rear seat heater ducts
- Bluetooth[®] Hands-free Phone System¹⁰
- AM/FM/CD audio system with four speakers
- USB connection port for iPod[®] and other compatible devices¹⁷
- Rear spoiler
- Six standard air bags¹⁴
- Tire Pressure Monitoring System (TPMS) with Easy-Fill Tire Alert^{18, 19}

KEY AVAILABLE PACKAGE:

- Charge Package



SV INCLUDES S EQUIPMENT PLUS:

- Nissan Navigation System with 7-inch touch-screen monitor¹³
- NavTraffic provided by SiriusXM²⁰
- POIs Powered by Google[™] and Google[™] Send to Car
- CARWINGS[®]: allowing for remote connection to vehicle⁶
- Six speakers
- Pandora[®] radio capability (iPhone[®] only)
- 16" Aluminum-alloy wheels
- 6.6 kW onboard charger
- Hybrid heater system
- Steering wheel-mounted cruise control
- Auto-dimming rearview mirror
- Partially recycled light gray cloth seats
- Front passenger seatback map pocket
- B-mode regenerative braking system

KEY AVAILABLE PACKAGES:

- LED Headlights and Quick Charge Port Package
- Premium Package



SL INCLUDES SV EQUIPMENT PLUS:

- Leather-appointed seats
- LED headlights
- Automatic on/off headlights
- Fog lights
- 17" aluminum-alloy wheels with P215/50R17 all-season tires
- HomeLink[®] Universal Transceiver
- Photovoltaic solar-panel rear spoiler
- Cargo cover
- Quick charge port

KEY AVAILABLE PACKAGE:

- Premium Package



PACKAGES

S Charge Package

- Nissan 6.6 kW onboard charger
- Quick charge port
- RearView Monitor²¹



SV LED Headlights and Quick Charge Port Package

- LED Headlights
- Automatic on/off headlights
- Quick charge port
- Fog lights

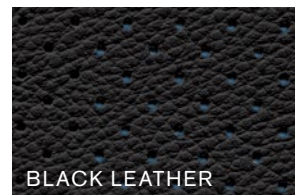
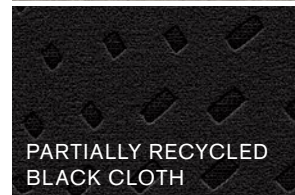


Premium Package (SV, SL)

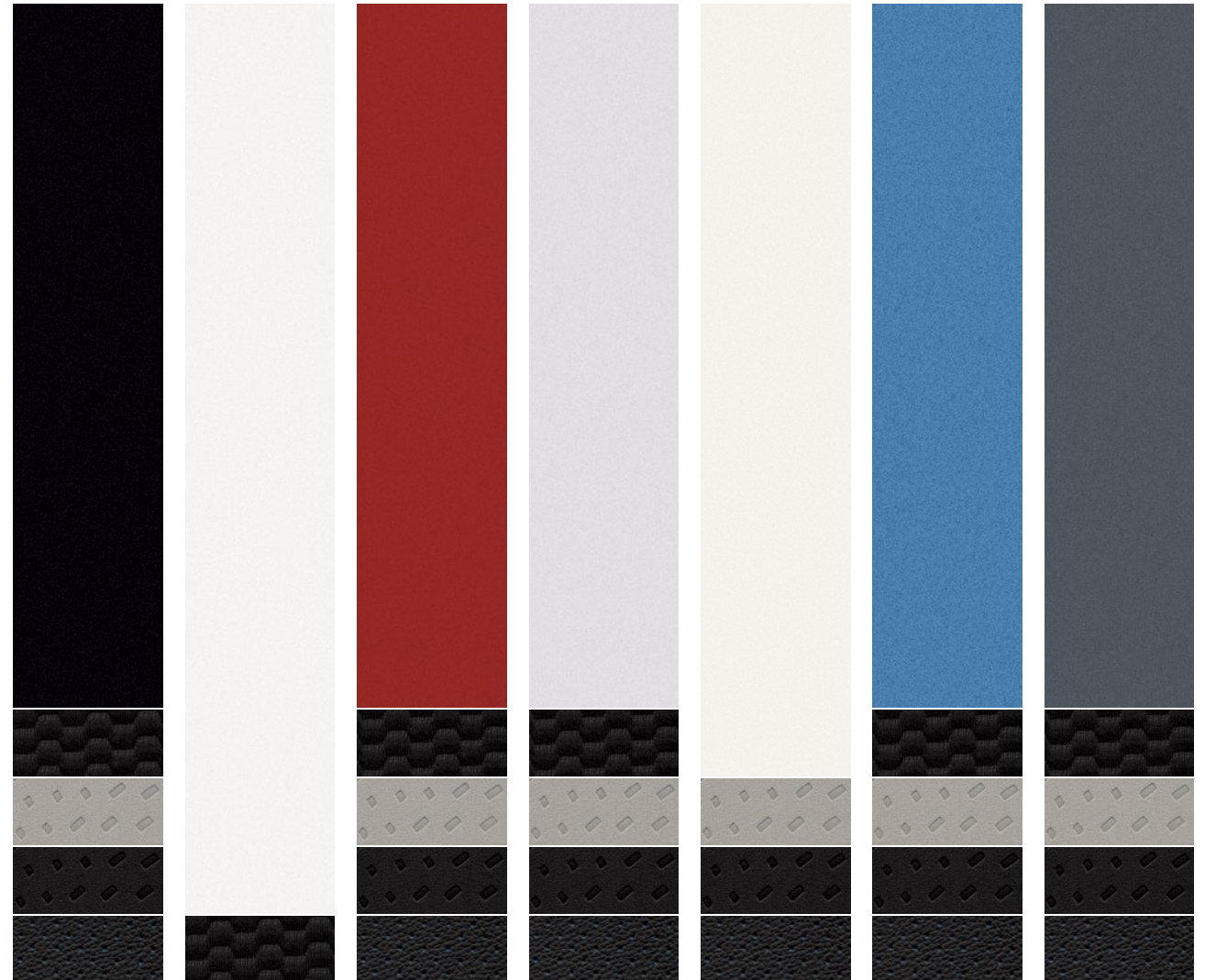
- Around View[®] Monitor¹²
- Bose[®] audio system with AM/FM/CD and seven speakers



FABRIC SELECTIONS



PAINT SELECTIONS



Super Black KH3 Glacier White QAK Cayenne Red NAH Brilliant Silver K23 Pearl White QAB Blue Ocean RBJ Metallic Slate KBC

S SV SL S SV SL S SV SL S SV SL S SV SL S SV SL

BLACK CLOTH	■	■	■	■	■	■
LIGHT GRAY CLOTH		■				
BLACK LEATHER			■			■

■ Standard

Nissan has taken care to ensure that the color swatches presented here are the closest possible representations of actual vehicle colors. Swatches may vary slightly due to the printing process and whether viewed in daylight, fluorescent or incandescent light. Please see the actual colors at your local Nissan dealer.



IT'S UNIQUE. NOW MAKE IT YOU.

GENUINE NISSAN ACCESSORIES. IMPRESS. CONNECT. PROTECT. ORGANIZE.

Every Genuine Nissan Accessory is: custom-fit, custom-designed and durability-tested; backed by Nissan's 3-year/36,000-mile (whichever occurs first) limited warranty; and can be financed when installed by dealer at time of purchase.²²

A. Holographic Kick Plates (2-piece set)

For a grand entry every time.

B. Center Console Appliqué

Because everyone needs something bright and sparkly.

C. Clear Charging Port Protector

Keep your port in top condition, even with everyday charging.

D. Zero Emission Body Design Graphics¹¹

Show your LEAF® pride.

E. Rear Cargo Cover²³

No one needs to know what's in there.

F. Rear Bumper Protector

Scratches? What scratches?

G. Sorona® Carpeted Floor Mats

Made of renewably sourced fiber, ready to save your carpet.¹⁵

H. Cargo Organizer²³

Indulge your inner neat freak.

Additional Accessories:

- All-season Floor Mats
- Cargo Net
- Carpeted Cargo Mat
- Nose Mask
- Splash Guards
- LEAF® Recycling and Shopping Bags
- And More

For more information and to shop online for Genuine Nissan Accessories, go to parts.NissanUSA.com.

SPECIFICATIONS²⁴

mechanical

80 kW AC synchronous electric motor
24 kWh lithium-ion (Li-ion) battery
6.6 kW onboard charger (SV, SL, available S)
Zero Emissions Vehicle (ZEV)
Power-assisted vented front/rear disc brakes
Regenerative braking system
4-wheel Anti-lock Braking System (ABS)
Electronic Brake-force Distribution (EBD) and Brake Assist (BA)
Independent strut front suspension and torsion beam rear axle with stabilizer bars
Vehicle-speed-sensitive power-assisted steering
Hill start assist
Portable trickle charge cable (120 V EVSE)
Quick charge port (400+ V DC) – (SL, available S, SV)
Tire repair kit

exterior

16" Steel wheels with P205/55R16 tires (S)
16" Alloy wheels with P205/55R16 tires (SV)
17" Alloy wheels with P215/50R17 tires (SL)
Aerodynamic LED headlights (SL, available SV)
Automatic on/off headlights (SL, available SV)
Dual power heated outside mirrors
Rear spoiler
Photovoltaic solar panel rear spoiler (SL)
Fog lights (SL, available SV)
Aerodynamic underbody cover and rear diffuser
Fixed roof antenna with blue accent
Unique Zero Emission exterior badging
Charge door with remote release
Charge port light and lock

interior

Nissan Navigation System (SV, SL)
NavTraffic provided by SiriusXM²⁰ (SV, SL)
POIs powered by Google™ and Google™ Send to Car (SV, SL)
RearView Monitor²¹ (Available S)
Around View™ Monitor (Available SV, SL)²²
CARWINGS[®] connect to LEAF from your computer (SV, SL):
Monitor battery state of charge/charging status
Start charging event
Turn on heating and air conditioning systems
Heating and air conditioning systems
Trip computer
Cruise control with steering wheel-mounted controls (SV, SL)
Nissan Intelligent Key™ and Push Button Start
Bluetooth® Hands-free Phone System¹⁰
Auto-dimming rearview mirror (SV, SL)
Power windows and door locks
Center console storage
Variable intermittent windshield wipers
Intermittent rear window wiper with washer
HomeLink® Universal Transceiver (SL)
Two cup holders and four bottle holders
Cargo cover (SL)

seating

5-passenger seating capacity
6-way manual adjustable driver's seat
4-way manual front-passenger's seat
60/40 Split fold-down rear seatbacks
Cloth seat trim (S)
Partially recycled cloth seat trim¹⁵
Leather-appointed seats (SL)
Leather-wrapped steering wheel

audio

AM/FM/CD audio system with QVGA color monitor and four speakers (S)
WMA/MP/CD playback capability
Bose® audio system with AM/FM/CD and seven speakers (Available SV, SL)
SiriusXM Satellite Radio²⁰
Pandora® radio capability (SV, SL)
Auxiliary audio input jack¹⁷
USB connection port for iPod® interface and other compatible devices^{17, 25}

safety and security

6 Standard air bags¹⁴
Vehicle Dynamic Control (VDC)¹⁶
Traction Control System (TCS)
Tire Pressure Monitoring System (TPMS) with Easy-Fill Tire Alert^{18, 19}
Nissan Vehicle Immobilizer System
Vehicle Security System

dimensions (inches)

Wheelbase	106.3
Overall length	175
Overall width	69.7
Overall height	61.0
Head room (front/rear)	41.2/37.3
Leg room (front/rear)	42.1/33.3
Hip room (front/rear)	51.7/50.0
Shoulder room (front/rear)	54.3/52.5

Nissan LEAF® SL shown in Blue Ocean with Nose Mask, Zero Emission Body Design Graphics and Splash Guards.

