

THE MORE LAYERS OF PROTECTION
ON YOUR VEHICLE – THE MORE
DIFFICULT IT IS TO STEAL.



*This anti-theft warning decal discourages car
thieves because they know that your vehicle is
protected with tamper resistant labels.*

Claims: IAS state-of-the-art administration and claims processing is supported by fast and friendly customer service. Claims Center: 800.346.6469 or www.fasterclaims.com.

This brochure is a summary of possible benefits available. Certain restrictions and limitations may apply. Please refer to the actual warranty for specific details and limitations.



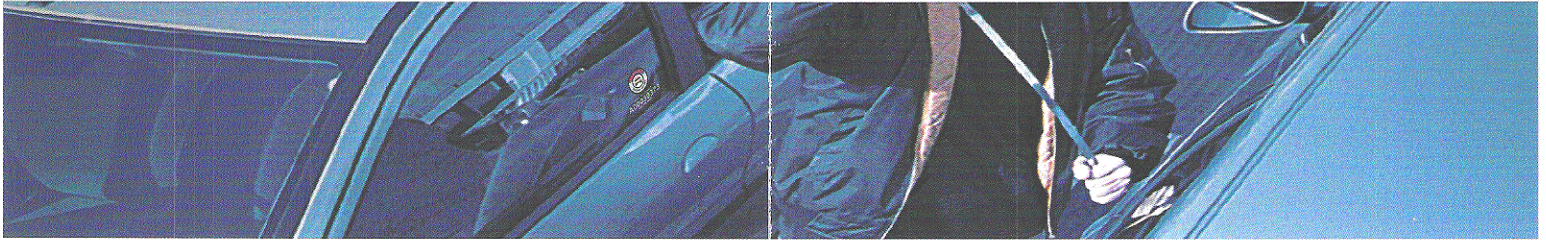
© Copyright 2008 Innovative Aftermarket Systems L.P. All rights reserved.
See warranty contract for limitations and restrictions.
GENERIC_PHANTOM_BRO_100308

The Ultimate Anti-Theft Protection



INVISIBLE
PHANTOM FOOTPRINTS®

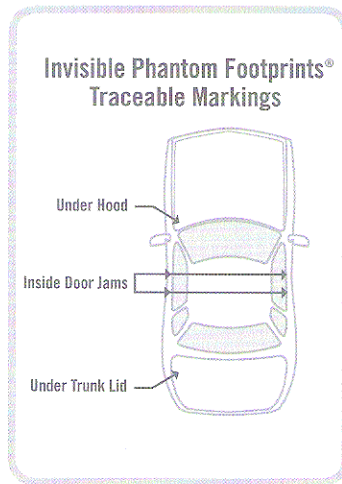
Layered Protection Against Theft



In the United States, two vehicles are stolen every minute. Using a layered approach to protect your vehicle makes it very difficult to steal.

Invisible Phantom Footprints® protects vehicles on six different areas with permanent, tamper resistant labels. The labels are impossible to remove intact and any attempt will be obvious, alerting law enforcers that the vehicle is stolen property. This innovative system protects your vehicle against theft and provides you with benefits in the unlikely event it is stolen.

INVISIBLE
PHANTOM FOOTPRINTS®



Protecting your investment with this anti-theft program will give you peace of mind as well as increase the likelihood of your vehicle being recovered should it fall into the wrong hands. As an added benefit, if your vehicle is stolen, this protection may provide you with cash benefits. This coverage may also qualify you for an insurance discount. Ask your dealer for details.

Layered Protection



Tamper Resistant Label—
Almost impossible to
remove without detection.

The “Phantom Footprint”—
Visible only under ultraviolet light.

Retroreflection Technology—
Assures label authenticity.

These labels contain unique numbers that are registered with the National Insurance Crime Bureau (NICB) who works with local law enforcement agencies to easily identify stolen vehicles.