



2015
MUSTANG




Go Further

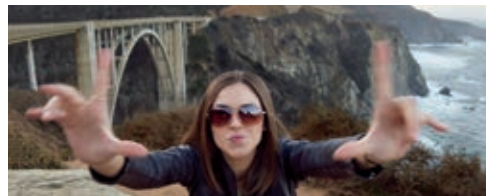
SPECIFICATIONS



Your wildest dreams.



**Just got real.
Click to see more of the
all-new Mustang.**



GT Premium. Fastback. Ingot Silver. Available equipment.

2015 **MUSTANG**
ford.com



MUSTANG SPECIFICATIONS



GT 50 Years Limited Edition. Wimbledon White. See your Ford Dealer for details.

Engines/EPA-Estimated Ratings¹ & Dimensions

3.7L Ti-VCT V6

300 hp @ 6,500 rpm
280 lb.-ft. of torque @ 4,000 rpm
6-speed manual
17 city/28 hwy/21 combined mpg
6-speed SelectShift[®] automatic
19 city/28 hwy/22 combined mpg

2.3L EcoBoost[®] I-4

310 hp @ 5,500 rpm²
320 lb.-ft. of torque @ 3,000 rpm²
6-speed manual
22 city/31 hwy/26 combined mpg
6-speed SelectShift automatic
21 city/32 hwy/25 combined mpg

5.0L Ti-VCT V8

435 hp @ 6,500 rpm²
400 lb.-ft. of torque @ 4,250 rpm²
6-speed manual
15 city/25 hwy/19 combined mpg
6-speed SelectShift automatic
16 city/25 hwy/19 combined mpg

Exterior	Fastback/Convertible
Wheelbase	107.1"
Length	188.3"
Height	54.4"/54.9"
Width – Excluding mirrors	75.4"
Width – Including mirrors	81.9"
Interior – Front	Fastback/Convertible
Head room	37.6"
Shoulder room	56.3"
Hip room	54.9"
Leg room	44.5"
Interior – Rear	Fastback/Convertible
Head room	34.8"/35.7"
Shoulder room	52.2"/44.7"
Hip room	47.4"/43.7"
Leg room	30.6"/30.8"
Capacities (cu. ft.)	Fastback/Convertible
Passenger volume	84.5/80.8
Luggage capacity	13.5/11.4
Total interior volume	98.0/92.2
Fuel tank (gal.)	
V6/V8	16.0
I-4	15.5

Tour the
full gallery



Standard Features

Mechanical

4-wheel vented disc Anti-Lock Brake System (ABS)
Selectable-effort electric power-assisted steering (Standard, Sport, Comfort)
Suspension – Front: independent double-ball-joint MacPherson strut with stabilizer bar
Suspension – Rear: independent integral link with stabilizer bar
Tire mobility kit

Seating

4-way adjustable front head restraints
50/50 split-fold rear seat (fastback only)
Front bucket seats

Interior

12-volt powerpoints (2)
Auto-dimming rearview mirror
Carpeted front floor mats
Cruise control
Full center floor console with storage bin
Illuminated locking glove compartment
Intelligent Access with push-button start
Leather-wrapped steering wheel and parking brake handle
Power door locks
Power windows with global open and one-touch-up/-down feature (one-touch-up fastback only)
Rear view camera
Steering wheel-mounted cruise, audio and 5-way controls
Sun visors with illuminated vanity mirrors
Sunglasses storage bin
Tilt/telescoping steering column

Exterior

Automatic headlamps with wiper activation
Easy Fuel[®] capless fuel filler
Embedded radio antenna (fastback only)
HID headlamps with signature lighting
LED taillamps with sequential turn signals
Rear-window defroster
Sideview mirrors with integrated blind spot mirrors
Windshield wipers – Variable-intermittent

Safety & Security

Personal Safety System[™] with dual-stage front airbags³
Active Knee-Airbag Glovebox³
AdvanceTrac[®] electronic stability control
Belt-Minder[®] front safety belt reminder
Driver's knee airbag³
Front-seat side airbags³
Illuminated Entry System
Individual Tire Pressure Monitoring System (excludes available spare)
LATCH – Lower Anchors and Tether Anchors for Children
MyKey[®]
Perimeter alarm
Safety belt restraint system – Manual 3-point shoulder and lap safety belt system for all seating positions
SecuriLock[®] Passive Anti-Theft System
Side-curtain airbags³ (fastback only)
SOS Post-Crash Alert System[™]

Dimensions may vary by trim level. ¹Actual mileage will vary. EPA-estimated ratings for fastback models only. Convertible ratings not available at time of release. ²Using 93-octane fuel. ³Always wear your safety belt and secure children in the rear seat.

2015 **MUSTANG**
ford.com





Ebony cloth trim. Available equipment.

Tri-bar Pony badge on gloss-black-finished trunk lid.

LED taillamps with sequential turn signals.

Intelligent Access with push-button start.

HID headlamps with signature lighting.



17" Sparkle Silver-Painted
Aluminum
Standard: V6



18" Foundry Black-Painted
Aluminum
Included: 051A

V6

Equipment Group 050A

Includes all standard features, plus:

Mechanical

3.7L Ti-VCT V6 engine

6-speed manual transmission

3.15:1 gear ratio with limited-slip rear differential

Seating

4-way manually adjustable driver's seat
with height adjustment

2-way manually adjustable front-passenger seat

Cloth seats

Interior

AM/FM stereo/single-CD player with 6 speakers

Ford SYNC® enhanced voice recognition
communications and entertainment system with
4.2" color LCD display in center stack, AppLink™,
911 Assist®, and 2 smart-charging USB ports

Auxiliary audio input jack

Single-zone manual air conditioning

Track Apps™ located in instrument cluster

Exterior

17" Sparkle Silver-painted aluminum wheels
with P235/55R17 all-season tires

Black cloth top on convertible

Body-color power sideview mirrors

Dual bright slashed-cut exhaust tips

Available Equipment Group

Equipment Group 051A – Blade-style decklid
spoiler, 6-way power driver's seat with power lumbar,
LED fog lamps, and 18" Foundry Black-painted
aluminum wheels

Available Options & Package

3.55:1 gear ratio with limited-slip rear differential

6-speed SelectShift® automatic transmission
with steering wheel-mounted paddle shifters
and Remote Start System

All-weather floor mats

Enhanced Security Package includes electronic
locking center console, Active Anti-Theft System,
electronic steering column lock and wheel locks

Reverse Sensing System

Spare wheel and tire

Spoiler delete (051A only)

EcoBoost®1

Equipment Group 100A
Includes select V6 features, plus:

- Mechanical
- 2.3L EcoBoost I-4 engine
- 3.3:1 gear ratio with limited-slip rear differential
- Active noise cancellation

- Seating
- 6-way power driver's seat with power lumbar
- 6-way power front-passenger seat

- Interior
- Diamond-mesh aluminum dash panel

- Exterior
- Blade-style decklid spoiler
- LED fog lamps

- Available Options & Packages
- 6-speed SelectShift® automatic transmission with steering wheel-mounted paddle shifters, 3.15:1 gear ratio with limited-slip rear differential, and Remote Start System
- 18" Foundry Black-painted aluminum wheels with 235/50R18 all-season tires (n/a with EcoBoost Performance Package or Wheel & Stripe Package)
- All-weather floor mats

- EcoBoost Performance Package includes unique front air splitter; larger radiator; upsized rear sway bar; heavy-duty front springs; unique chassis tuning; larger brake rotors with 4-piston calipers; 19" Ebony Black-painted aluminum wheels with 255/40R19 summer-only tires²; unique electric power-assisted steering, ABS and electronic stability control tuning; Engine Turn aluminum dash panel; Gauge Pack (oil pressure and boost); spoiler delete; and 3.55:1 gear ratio with limited-slip rear differential (n/a with 18" wheels, spare tire or Wheel & Stripe Package)

- Enhanced Security Package includes electronic-locking center console, Active Anti-Theft System, electronic steering column lock and wheel locks

- RECARO® Ebony sport cloth seats with manual adjustment

- Reverse Sensing System

- Spare wheel and tire (n/a with EcoBoost Performance Package)

- Spoiler delete

- Wheel & Stripe Package includes side stripes and 19" low-gloss Black-painted machined aluminum wheels with 255/40R19 all-season tires (n/a with 18" wheels or EcoBoost Performance Package)

EcoBoost Premium

Equipment Group 200A
Includes select EcoBoost features, plus:

- Mechanical
- Selectable Drive Modes with 4-gang toggle switch pack (Normal, Sport+, Track, Snow/Wet)

- Seating
- Heated and cooled front seats
- Leather-trimmed seats

- Interior
- Aluminum brake and accelerator pedals
- Ambient lighting
- AM/FM stereo/single-CD player with 9 speakers and amplifier
- Bright-finish door speaker surrounds
- Dual-zone electronic automatic temperature control
- Illuminated door-sill plates
- Premium door-trim panel inserts
- Satin Brush aluminum dash panel
- SiriusXM® Satellite Radio with 6-month trial subscription

- SYNC® with MyFord Touch® voice-activated, in-vehicle connectivity system with 8" color LCD touch screen in center stack and media hub with USB port
- Universal garage door opener

- Exterior
- 18" Magnetic-painted machined aluminum wheels with P235/50R18 all-season tires
- Body-color power, heated sideview mirrors with integrated turn signal indicators
- Pony projection lamps
- Rear diffuser

- Available Equipment Group
- Equipment Group 201A – Shaker™ Pro Audio System with 12 speakers and amplifier, HD Radio™ Technology, driver's seat and sideview mirror memory feature, and BLIS® (Blind Spot Information System) with cross-traffic alert

- Available Options & Packages
- 6-speed SelectShift automatic transmission with steering wheel-mounted paddle shifters and Remote Start System

- 18" Foundry Black-painted aluminum wheels with 235/50R18 all-season tires (n/a with 50 Years Appearance Package or EcoBoost Performance Package)

- 20" x 9" Foundry Black-painted machined aluminum wheels with 265/35R20 summer-only tires² (n/a with 50 Years Appearance Package or EcoBoost Performance Package)

- 50 Years Appearance Package³ includes 50 Years grille with bright surround, 19" premium Luster Nickel-painted aluminum wheels with 255/40R19 all-season tires, unique rear gas cap badge, Axle Spin aluminum dash panel, and unique seat and door-trim panel inserts (n/a with optional wheels, Premier Trim With Color Accent Group, RECARO seats, or spoiler delete)

- Adaptive cruise control and collision warning with brake support, and rain-sensing windshield wipers
- All-weather floor mats

- EcoBoost Performance Package³ includes unique front air splitter; larger radiator; upsized rear sway bar (fastback only); heavy-duty front springs (fastback only); unique chassis tuning; larger brake rotors with 4-piston calipers; 19" Ebony Black-painted aluminum wheels with 255/40R19 summer-only tires²; unique electric power-assisted steering, ABS and electronic stability control tuning; Engine Turn aluminum dash panel; Gauge Pack (oil pressure and boost); spoiler delete; and 3.55:1 gear ratio with limited-slip rear differential (n/a with optional wheels)

- Enhanced Security Package includes electronic-locking center console, Active Anti-Theft System, electronic steering column lock and wheel locks

- Premier Trim With Color Accent Group³ includes Charcoal Black interior environment with color-accented seats and unique door-trim panel inserts (n/a with 50 Years Appearance Package)

- RECARO Ebony sport leather-trimmed seats with manual adjustment³ (fastback only; n/a with 50 Years Appearance Package, heated and cooled front seats or memory feature)

- Reverse Sensing System

- Spare wheel and tire (n/a with 20" wheels or EcoBoost Performance Package)

- Spoiler delete (n/a with 50 Years Appearance Package)

- Voice-activated Navigation System with integrated SiriusXM Traffic and Travel Link® services with 5-year subscription

¹Fastback only. ²Ford does not recommend using summer tires when temperatures drop to approximately 40°F or below (depending on tire wear and environmental conditions) or in snow/ice conditions. If the vehicle must be driven in these conditions, Ford recommends using all-season or winter tires. ³When certain packages are ordered in combination with other packages, final content may vary. See your dealer for additional details.



EcoBoost Premium. Ceramic leather trim.
Available equipment.

EcoBoost Premium. Premier Trim
With Color Accent Group. Red Line.

EcoBoost Premium.
Heated and cooled front seats.

EcoBoost. Wheel & Stripe Package.



17" Sparkle Silver-Painted
Aluminum
Standard: EcoBoost



18" Magnetic-Painted
Machined Aluminum
Standard: EcoBoost Premium



18" Foundry Black-Painted
Aluminum
Optional



19" Ebony Black-Painted
Aluminum
Included: EcoBoost
Performance Package



19" Low-Gloss Black-Painted
Machined Aluminum
Included: Wheel & Stripe Package



19" Premium Luster Nickel-
Painted Aluminum
Included: 50 Years
Appearance Package



20" x 9" Foundry Black-Painted
Machined Aluminum
Optional: EcoBoost Premium



GT Premium. Ebony leather trim.
Available equipment.

GT. RECARO Ebony sport cloth seats.
Available equipment.

GT Premium. 50 Years Appearance Package.

GT Premium. Selectable Drive Modes toggle switch pack.

GT¹

Equipment Group 300A

Includes select EcoBoost® features, plus:

Mechanical

5.0L Ti-VCT V8 engine
3.31:1 gear ratio with limited-slip rear differential
Electronic Line-Lock (track use only)
Engine oil cooler
Larger brake rotors with 4-piston calipers
Launch control (manual transmission only)

Exterior

18" Magnetic-painted machined aluminum wheels with P235/50R18 all-season tires
Dual bright rolled and polished exhaust tips
Hood-vented air extractors
Raised blade-style decklid spoiler

Available Options & Packages

3.55:1 gear ratio with limited-slip rear differential
6-speed SelectShift® automatic transmission with steering wheel-mounted paddle shifters; 3.15:1 gear ratio with limited-slip rear differential, and Remote Start System
18" Foundry Black-painted aluminum wheels with 235/50R18 all-season tires (n/a with GT Performance Package)
All-weather floor mats

Enhanced Security Package includes electronic-locking center console, Active Anti-Theft System, electronic steering column lock and wheel locks

GT Performance Package includes unique front air splitter; strut-tower brace; larger radiator; upsized rear sway bar; heavy-duty front springs; unique chassis tuning; Gauge Pack (oil pressure and vacuum); K-member brace; Brembo™ 6-piston front calipers; 19" x 9" Ebony Black-painted aluminum front wheels with 255/40R19 summer-only tires²; 19" x 9.5" Ebony Black-painted aluminum rear wheels with 275/40R19 summer-only tires²; unique electric power-assisted steering, ABS and electronic stability control tuning; Engine Turn aluminum dash panel; spoiler delete; and 3.73:1 gear ratio with TORSEN® helical gear differential (manual only; n/a with 18" wheels, spare wheel and tire, or spoiler delete)

RECARO® Ebony sport cloth seats with manual adjustment

Reverse Sensing System

Spare wheel and tire (n/a with GT Performance Package)

Spoiler delete

GT Premium

Equipment Group 400A

Includes select GT features, plus:

Mechanical

Selectable Drive Modes with 4-gang toggle switch pack (Normal, Sport+, Track, Snow/Wet)

Seating

Heated and cooled front seats
Leather-trimmed seats

Interior

Aluminum brake and accelerator pedals
Ambient lighting
AM/FM stereo/single-CD player with 9 speakers and amplifier
Bright-finish door speaker surrounds
Dual-zone electronic automatic temperature control
Illuminated door-sill plates
Leather-wrapped parking brake handle
Premium door-trim panel inserts
Satin Brush aluminum dash panel
SiriusXM® Satellite Radio with 6-month trial subscription
SYNC® with MyFord Touch® voice-activated, in-vehicle connectivity system with 8" color LCD touch screen in center stack and media hub with USB port
Universal garage door opener

Exterior

Body-color power, heated sideview mirrors with integrated turn signal indicators
Pony projection lamps
Rear diffuser

Available Equipment Group

Equipment Group 401A – Shaker™ Pro Audio System with 12 speakers and amplifier, HD Radio™ Technology, driver's seat and sideview mirror memory feature, and BLIS® (Blind Spot Information System) with cross-traffic alert

Available Options & Packages

3.55:1 gear ratio with limited-slip rear differential
6-speed SelectShift automatic transmission with steering wheel-mounted paddle shifters; 3.15:1 gear ratio with limited-slip rear differential, and Remote Start System

18" Foundry Black-painted aluminum wheels with 235/50R18 all-season tires (n/a with 50 Years Appearance Package or GT Performance Package)

19" Dark Stainless premium painted aluminum wheels with 255/40R19 all-season tires (n/a with 50 Years Appearance Package or GT Performance Package)

20" x 9" Foundry Black-painted machined aluminum wheels with 265/35R20 summer-only tires² (n/a with GT Performance Package)

50 Years Appearance Package³ includes 50 Years grille with bright surround, 19" premium Luster Nickel-painted aluminum wheels with 255/40R19 all-season tires, unique rear gas cap badge, Axle Spin aluminum dash panel, and unique seat and door-trim panel inserts (n/a with optional wheels, RECARO seats, Premier Trim With Color Accent Group or spoiler delete)

Adaptive cruise control and collision warning with brake support, and rain-sensing windshield wipers

All-weather floor mats

Enhanced Security Package includes electronic-locking center console, Active Anti-Theft System, electronic steering column lock and wheel locks

GT Performance Package³ includes unique front air splitter; strut-tower brace; larger radiator; upsized rear sway bar; heavy-duty front springs; unique chassis tuning; Gauge Pack (oil pressure and vacuum); K-member brace; Brembo 6-piston front calipers; 19" x 9" Ebony Black-painted aluminum front wheels with 255/40R19 summer-only tires²; 19" x 9.5" Ebony Black-painted aluminum rear wheels with 275/40R19 summer-only tires²; unique electric power-assisted steering, ABS and electronic stability control tuning; Engine Turn aluminum dash panel; spoiler delete; and 3.73:1 gear ratio with TORSEN helical gear differential (fastback manual only; n/a with optional wheels)

Premier Trim With Color Accent Group³ includes Charcoal Black interior environment with color-accented seats and unique door-trim panel inserts (n/a with 50 Years Appearance Package)

RECARO Ebony sport leather-trimmed seats with manual adjustment³ (fastback only; n/a with 50 Years Appearance Package, heated and cooled front seats or memory feature)

Reverse Sensing System

Spare wheel and tire (n/a with 20" wheels or GT Performance Package)

Spoiler delete (n/a with 50 Years Appearance Package)

Voice-activated Navigation System with integrated SiriusXM Traffic and Travel Link® services with 5-year subscription



18" Magnetic-Painted
Machined Aluminum
Standard



18" Foundry Black-Painted
Aluminum
Optional



19" Ebony Black-Painted
Aluminum
Included: GT
Performance Package



19" Dark Stainless
Premium Painted Aluminum
Optional: GT Premium



19" Premium Luster Nickel-
Painted Aluminum
Included: 50 Years
Appearance Package



20" x 9" Foundry Black-Painted
Machined Aluminum
Optional: GT Premium

¹Fastback only. ²Ford does not recommend using summer tires when temperatures drop to approximately 40°F or below (depending on tire wear and environmental conditions) or in snow/ice conditions. If the vehicle must be driven in these conditions, Ford recommends using all-season or winter tires. ³When certain packages are ordered in combination with other packages, final content may vary. See your dealer for additional details.

Exteriors



Oxford White



Ingot Silver



Triple Yellow Tri-coat



Competition Orange



Race Red



Ruby Red Tinted Clearcoat Metallic



Deep Impact Blue



Magnetic



Guard



Black

Exteriors	V6	EcoBoost®/GT	Interiors
Oxford White	1	2 3 4	EcoBoost Premium/GT Premium
Ingot Silver	1	2 3 4	5 6 7 8 9 10 11
Triple Yellow Tri-coat¹	1	2 4	5 8 9 11
Competition Orange	1	2 3 4	5 6 8 9 11
Race Red	1	2 3 4	5 6 8 9 11
Ruby Red Tinted Clearcoat Metallic¹	1	2 3 4	5 6 8 9 10 11
Deep Impact Blue	1	2 3 4	5 6 7 8 9 10 11
Magnetic	1	2 3 4	5 6 7 8 9 10 11
Guard	1	2 3 4	5 6 7 8 9 11
Black	1	2 3 4	5 6 7 8 9 10 11

9, 10 – Premier Trim With Color Accent Group 11 – 50 Years Appearance Package

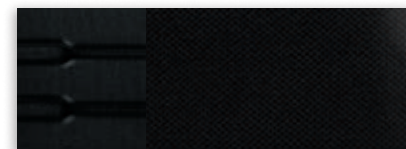
¹Additional charge.

Colors are representative only. See your dealer for actual paint/trim options.

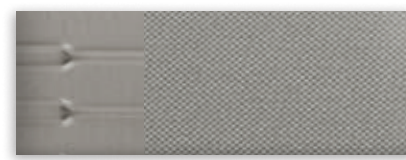
Interiors



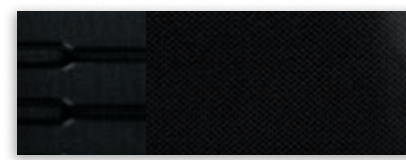
1 Ebony Cloth



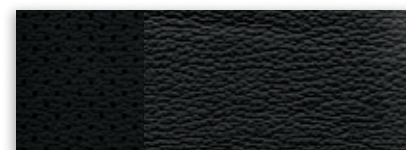
2 Ebony Cloth



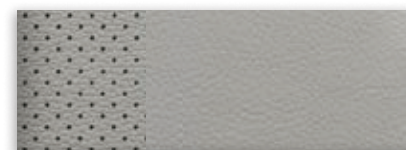
3 Ceramic Cloth



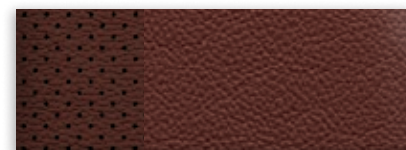
4 RECARO® Ebony Sport Cloth



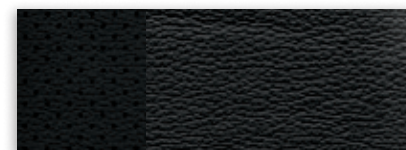
5 Ebony Leather with Perforated Inserts



6 Ceramic Leather with Perforated Inserts



7 Dark Saddle Leather with Perforated Inserts



8 RECARO Ebony Sport Leather with Perforated Inserts



9 Ebony Vinyl with Perforated Leather Inserts



10 Red Line Vinyl with Perforated Leather Inserts



11 Raven Black Vinyl with Perforated Leather Inserts

Bring these colors to life





GT fastback in Ingot Silver accessorized with 19" Ebony Black-painted aluminum wheels, wheel center caps, wheel lock kit, and Ford Custom Graphics by 3M Original Wraps¹

All-weather floor mats

Remote Access

Sport pedals

Full vehicle cover

Exterior

Full vehicle covers
Hood protector¹
Rear spoilers

Interior

Ash cup/coin holders
Cargo organizers and protectors
Carpeted floor mats
Door-sill plates
Gear indicator shift knob¹
Interior light kit
Tablet cradle¹

Electronics

Portable DVD rear-seat entertainment systems¹

See other accessories



FORD ACCESSORIES

accessories.ford.com

¹Ford Licensed Accessory.

Learn more about
your Mustang



2015
MUSTANG



Go Further

ford.com

New Vehicle Limited Warranty. We want your Ford Mustang ownership experience to be the best it can be. Under this warranty, your new vehicle comes with 3-year/36,000-mile bumper-to-bumper coverage, 5-year/60,000-mile Powertrain Warranty coverage, 5-year/60,000-mile safety restraint coverage, and 5-year/unlimited-mile corrosion (perforation) coverage – all with no deductible. Please ask your Ford Dealer for a copy of this limited warranty.

Roadside Assistance. Covers your vehicle for 5 years or 60,000 miles, so you have the security of knowing that help may be only a phone call away should you run out of fuel, lock yourself out of the vehicle or need towing. Your Ford Dealer can provide complete details on all of these advantages.

Ford Credit. Get the ride you want. Whether you plan to lease or finance, you'll find the choices that are right for you at Ford Credit. Ask your Ford Dealer for details or check us out at fordcredit.com.

Ford Extended Service Plan. For a purchase or lease, the Ford Extended Service Plan (ESP) gives you peace-of-mind protection designed to cover key vehicle components and protect you from the cost of unexpected repairs. Ask your dealer for a Ford ESP, the only service contract backed exclusively by Ford and honored at all Ford Lincoln dealerships.

Insurance Services. Get Ford Motor Company quality in your auto insurance. Our program offers industry-leading benefits and competitive rates. Call 1-877-367-3847, or visit us at fordvip.com for a no-obligation quote. Insurance offered by American Road Services Company (in CA, American Road Insurance Agency), a licensed agency and subsidiary of Ford Motor Company.

Ford Original Accessories will be warranted for whichever provides you the greatest benefit: 24 months/unlimited mileage, or the remainder of your Bumper-to-Bumper 3-year/36,000-mile New Vehicle Limited Warranty. Ford Licensed Accessories (FLA) are warranted by the accessory manufacturer's warranty. FLA are designed and developed by the accessory manufacturer and have not been designed or tested to Ford Motor Company engineering requirements. Contact your Ford Dealer for details and/or a copy of all limited warranties.

Comparisons based on competitive models (class is High-Power Sports Cars), publicly available information and Ford certification data at time of release. Vehicles may be shown with optional equipment. Features may be offered only in combination with other options or subject to additional ordering requirements/limitations. Dimensions shown may vary due to optional features and/or production variability. Information is provided on an "as is" basis and could include technical, typographical or other errors. Ford makes no warranties, representations, or guarantees of any kind, express or implied, including but not limited to, accuracy, currency, or completeness, the operation of the information, materials, content, availability, and products. Ford reserves the right to change product specifications, pricing and equipment at any time without incurring obligations. Your Ford Dealer is the best source of the most up-to-date information on Ford vehicles.

After trial period expires, SiriusXM Satellite Radio, SiriusXM Traffic and Travel Link subscriptions are sold separately or as a package and are continuous until you call SiriusXM to cancel. See SiriusXM Customer Agreement for complete terms at www.siriusxm.com. SiriusXM Traffic and Travel Link available in select markets. For more information, see www.siriusxm.com/travellink or www.siriusxm.com/traffic. Sirius, XM and all related marks and logos are trademarks of Sirius XM Radio Inc. Brembo is a trademark of Brembo S.p.A. HD Radio is a proprietary trademark of iBiquity Digital Corp. RECARO is a registered trademark of RECARO Beteiligungs-GmbH. TORSEN is a registered trademark of JTEKT Corporation.

Follow Ford:

