




Jeep[®]

W R A N G L E R

2013



The majesty of the natural world invites exploration by those who share appreciation for its extraordinary wonder. Let the journey begin.

A black and white photograph showing a close-up of the front grille of a Jeep vehicle. The grille features the iconic seven-slot design. The word "Jeep" is prominently displayed in a raised, metallic font on the right side of the grille. The background consists of a rugged, rocky mountain landscape under a clear sky. The lighting is dramatic, highlighting the textures of the rock and the metallic surfaces of the car.

Jeep



THIS AUTHENTIC ICON HAS BEEN A BEACON OF FREEDOM FOR MORE THAN 70 YEARS. TODAY'S WRANGLER OFFERS EVEN MORE OPPORTUNITIES TO CONNECT WITH THE WORLD FROM THE GROUND UP. CLIMB IN AND EXPLORE WRANGLER'S UNIQUE CAPABILITY, TECHNOLOGY, AND COMFORT, AND SEE THE WORLD FROM A NEW POINT OF VIEW.

IT'S A WIDE-OPEN
WORLD WITH
JEEP® WRANGLER



INCLINED TO CLIMB

TRU-LOK® LOCKING

DIFFERENTIALS. Front and rear electronic-locking differentials balance speed between left and right wheels, maintaining forward momentum for the ultimate in traction. An instrument panel-mounted rocker switch can lock either the rear or both axles. (Standard only on Rubicon.®)

TWO-PIECE STRUCTURAL OIL

PAN. A two-piece oil pan provides a steel lower portion for impact resistance with an upper aluminum section for improved weight savings.

ROCK-TRAC® TRANSFER CASE.

A 4:1 low-gear ratio allows Wrangler Rubicon to crawl at a low speed for greater control and increases the amount of torque available at the wheels. (Standard only on Rubicon.)

HEAVY-DUTY SUSPENSION.

Solid axles with locating arms, coil springs, track/stabilizer bars, front steering damper, and tunable monotube shock absorbers are firm at low speeds and more relaxed at higher speeds. (Standard on Sahara.® A performance suspension is standard on Rubicon.)

FRONT SWAY BAR DISCONNECT SYSTEM.

Flip a switch and the sway bar disengages when driving under 18 mph in 4WD-low (4LO) mode. This allows the front suspension to travel up to 25 percent farther on Rubicon than Sport and Sahara models. (Standard only on Rubicon.)

TORQUE TO TOW. Wrangler Unlimited can confidently tow up to 3,500 lb when properly equipped with the factory-installed Trailer Tow Group.

DANA® 44 HEAVY-DUTY SOLID

AXLES. Durability comes from heavy shafts, stiff housings, large pinion bearings, and above-center pinion mountings for smoother, quieter operation. (Rear Dana 44 standard on all models. Front Dana 44 standard only on Rubicon.)

BEST-IN-CLASS GROUND

CLEARANCE.®* Wrangler Rubicon runs over the competition with 10 inches of ground clearance, helped, in part, by its standard 32-inch BFGoodrich® off-road tires.

ROCK RAILS. Extra-tough body-mounted rails provide additional rocker panel protection. (Standard only on Rubicon.)

BODY-ON-FRAME DESIGN. Built with a frame that's fully boxed for strength, stiffness, and durability.

KEEP STEERING ON COURSE.

Wrangler features a steering linkage and a recirculating-ball steering gear. Its robust, cross-link geometry helps provide one of the stiffest possible linkage systems in a solid-axle platform for steering precision.

*A note about this brochure: All disclaimers and disclosures can be found on the inside back cover.

PENTASTAR® 3.6L V6 ENGINE



ROCK-TRAC® 4WD SYSTEM.

At the heart of the masterful capability of Rubicon® beats one of the world's foremost four-wheel-drive systems. It delivers extreme rock-crawling ability, thanks to the 4:1 low-gear ratio. Rock-Trac's low crawl speed makes it easy to ascend or descend sharp inclines and to crawl over obstacles.



STRONG HEART



5-SPEED AUTOMATIC TRANSMISSION with AUTOSTICK.

Gain exceptional efficiency and out-of-the-gate performance. An aggressive first-gear ratio offers ample launch power without compromising efficiency. Electronically controlled engine torque helps you move smoothly through every gear. The new AutoStick feature offers driver-selectable control to manually change gears.

The Pentastar 3.6L V6 engine with Variable Valve Timing (VVT) delivers the power to match Wrangler's legendary brawn. Boasting 285 horsepower with 260 lb-ft of torque, this efficient powerhouse is cast from lightweight aluminum and sips regular-octane gas. Electronic Throttle Control (ETC) makes driving over rough terrain in 4LO mode smoother.



WRANGLER MOAB SPECIAL EDITION. LIKE THE IMPOSING ROCKS OF MOAB, UTAH, THIS WRANGLER HAS A SPECIAL APPEAL WITH HUNGRY ADVENTURE HUNTERS. THE PURPOSEFUL APPEARANCE OF MOAB EDITION INCLUDES A UNIQUE MOPAR® HOOD AND BLACK TAILLAMP GUARDS, ROCK RAILS, BUMPERS, AND FUEL FILLER DOOR. A STANDARD TRAC-LOK® DIFFERENTIAL OR OPTIONAL TRU-LOK® REAR-AXLE LOCKER STAND READY TO GIVE THIS WRANGLER'S GOODYEAR® SILENT ARMOR TIRES A REAL WORKOUT. AN OPTIONAL WARN® WINCH AND WINCH MOUNTING KIT FROM MOPAR ADDS YET ANOTHER LEVEL OF ROCK-CLIMBING CAPABILITY. FIND FULL DETAILS IN THE ENCLOSED BUYER'S GUIDE AND AT JEEP.COM.

FIVE PERFORMANCE TEST CATEGORIES

are designed to prove every Jeep® 4x4 vehicle's Trail Rated® capability.

» **TRACTION.** Trail Rated traction helps you maintain controlled forward motion on snowy back roads and icy bridges. You can climb steep sand dunes and master muddy two-tracks. Others may fear untamed terrain, but your Trail Rated Wrangler has the traction within to master all kinds of topography and driving conditions.

» **ARTICULATION.** Wrangler's suspension systems enhance on- and off-road performance by maximizing flexibility, axle articulation, and wheel travel. This standard indicates that when one or more wheels are elevated, the Jeep 4x4 system helps the others stay on the ground longer to keep you moving.

» **MANEUVERABILITY.** Every Wrangler is born with the athletic ability to navigate narrow gaps, dodge emergency situations, and avoid cosmetic damage to underbody sills, thanks to precision steering and optimized wheelbases.

» **GROUND CLEARANCE.** Head out knowing that your Trail Rated Wrangler has optimized approach, departure, and breakover angles designed to clear logs, rocks, and uneven ground. Your undercarriage is protected, too, with forged skid plates that cover your vehicle's most valuable underbody elements.

» **WATER FORDING.²** Traverse that stream with confidence, thanks to additional electrical and body seals, plus a high air-intake location. Wrangler has the capability to safely manage in up to 30 inches of water. Always inspect all waterways before proceeding, just to make sure there are no unforeseen pitfalls.

It's the recognized standard for off-road capability. The Trail Rated fortitude of Jeep Wrangler helps you navigate the world and its worries. On the road or on the trail, Wrangler works to safely get you through the challenges Mother Nature sets before you.





Freedom opens a world
of possibilities ... to thrive,
to dream, to become one with
the power within Wrangler and
reach new heights.





HEAD OUT WITH THE PROPER LAYERS

FROM DEEP WITHIN ITS CORE, WRANGLER CONFIDENTLY SERVES YOUR QUEST TO EXPLORE. AHEAD LIES OPEN-AIR FREEDOM, LEADING YOUR CALL TO THE WILD. IN FACT, WRANGLER UNLIMITED STANDS TALL AS THE WORLD'S ONLY FOUR-DOOR 4WD CONVERTIBLE. WELCOME TO THE ULTIMATE FORMULA FOR CAPABILITY COMBINED WITH FULL-OUT FUN.

WHAT'S INSIDE. A new front-seat design gives more cushion where it's needed most. Available leather trim throughout adds upscale style. A new and available Alpine® Premium Sound System pushes out major wattage for a premium audio experience. Every Wrangler arrives with drain plugs to help you keep it refreshed and ready for whatever comes next.

PENTASTAR® 3.6L V6 DOHC ENGINE.

An absolute workhorse, delivering 285 hp/260 lb-ft of torque. Variable Valve Timing and Electronic Throttle Control help improve your overall mpg experience. Standard.

SWAY BAR DISCONNECT. Flip a switch to drop and compress the front wheels up to 22 percent farther. Standard on Rubicon®.



THE LURE OF THE OPEN AIR. Choose the way you want to meet the sky.

FREEDOM TOP® HARDTOP is strong and secure, and available in the exterior paint color of your Wrangler Sahara® or Rubicon. A three-piece modular design lets you bring in the sun as you see fit. Available.

REMOVABLE FULL-FRAMED DOORS AND FOLD-DOWN WINDSHIELD. Every Wrangler arrives ready to reveal a new point of view.

SUNRIDER® SOFT TOP utilizes special three-ply material that's quiet, watertight, and easy to fold away. Standard.

PREMIUM SUNRIDER SOFT TOP. It adds durability and sound dampening for a quieter ride. Plus, a dust blocker helps keep your Premium Soft Top in tip-top shape and always easy to wash. Available.



Finely forged details
meld form and function.
From purposeful hood latches
and bolted door hinges to robust
stitching and heritage-stamped
grab handle, Jeep® Wrangler
sweats the details.



THE SMALLEST DESIGN
CUE RECEIVES A BIG
DOSE OF ENGINEERED
ATTENTION. SO THE
SHORTEST JOURNEY
IS AS JAM-PACKED
WITH PLEASURE AS
THE MAJOR CROSS-
COUNTRY TOUR. AND
THE ICONIC SEVEN-
SLOT GRILLE IS JUST
AS ICONIC AS EVER.





THE PURSUIT
OF FREEDOM
BECOMES
SOMETHING
TRANSCENDENT



INTERACTION. UCONNECT® BRINGS A RANGE OF COMMUNICATION AND ENTERTAINMENT SERVICES STRAIGHT INTO YOUR VEHICLE, ALL BUNDLED TOGETHER WITHIN A ROBUST UCONNECT SYSTEM. WITH SO MANY CONVENIENT OPTIONS TO CHOOSE FROM, DISCOVER HOW YOU'D LIKE TO CONNECT AT DRIVEUCONNECT.COM.



» **ENTERTAINMENT.** Manage all of your media. You'll have several ways to access audio. Get the sound going via CDs/DVDs, MP3s, remote USB port, auxiliary input jack, hard disc storage, Voice Command, SiriusXM Satellite Radio⁴ (your first year of service is included), and Bluetooth[®] streaming audio.



» **PHONE.** Talking on the phone while driving has never been easier — or more responsible. Uconnect Phone is the in-vehicle voice-activated communication system that allows you to talk on your Bluetooth compatible phone virtually hands-free. This clever system is also smart enough to synchronize with your Bluetooth compatible phone's contacts⁵ — up to 1,000 entries — every time you get into your vehicle.



» **NAVIGATION.** Provides enhanced Garmin[®] GPS navigation and destination entry via voice command. Find a restaurant, airport, museum, or department store, and get directions with a simple request. Lane assist and junction view are also displayed.



» **VOICE COMMAND.** Simplifies driving by letting you keep your eyes on the road and hands on the wheel. Use your voice to select AM/FM radio stations and SiriusXM Satellite Radio⁴ channels, and make calls.



» **WEB.** Put the power of high-speed Internet in your vehicle with Uconnect Web⁶. Effortlessly connect any WiFi-enabled device to the Internet at broadband speeds, making your vehicle a mobile hotspot. Passengers can use multiple devices at the same time. There's no need for cell cards or software with this unique Authentic Accessory by Mopar[®] — it's all wireless. Subscription required. Sold separately.

GARMIN[®]


GARMIN[®] NAV. Head out in the right direction with Garmin, the most recognized name in GPS way-finding. It features Garmin's intuitive user interface and navigation with lane guidance, bringing the popular handheld experience to a factory in-dash screen.

SiriusXM[®]
TRAVEL LINK

SiriusXM Travel Link⁴ Access a wealth of information at your fingertips, including national and local weather reports, local gas prices, in-game and final sports scores, weekly movie times, even local ski slope conditions. Your first year of service is included.

Sirius Select⁴

— Over 130 Channels. This is what satellite radio is all about. Enjoy commercial-free music, plus sports, news, talk, and entertainment. And get a selection of premium programming, including every NFL game, Howard Stern, every NASCAR[®] race, Martha Stewart, and more. Visit www.siriusxm.com for details.



Wrangler is made to move you with its robust mobile communication and entertainment options. Go everywhere. Hear everything. Stay in touch.



EPIC WAVES

IMMERSE YOURSELF. YOUR MUSIC AND MEDIA PLAY IN WORLD-CLASS HARMONY WITH WRANGLER'S NEW, AVAILABLE ALPINE® PREMIUM SOUND SYSTEM. RIDE THE NEW WAVE IN SOUND ENGINEERING.

//////ALPINE

IDEAL LOCATION. The all-new seven-speaker Alpine Premium Sound System creates a realistic sound stage by utilizing a high-powered eight-channel, 368-watt amplifier, an eight-inch subwoofer, two tweeters, and four 6.5-inch speakers — two located in the class-exclusive¹ overhead sound bar. Alpine is known for offering outstanding tonal balance and definition. Welcome to a new wave in sound engineering.



NOTHING OVERLOOKED

BE SEATED. Wrangler's new interior seat fabrics and redesigned seats stand up to all kinds of sitting down. There's more cushion for bottoms and backs, giving you more stamina to keep on going.

INNER GLOW. New interior courtesy lights illuminate the front footwells, and front console cup holders glow to show where to land beverages in the dark. A new electrochromatic rearview mirror automatically darkens to help eliminate the blinding glare of headlamps.

WEATHER-RESISTANT SURFACES AND WASH-OUT INTERIOR. Like your favorite canine, Wrangler loves a spray-down. Go out and have some good, dirty fun, then grab the hose, remove Wrangler's drain plugs, rinse, and repeat.

STASH YOUR STUFF. Lock your valuables in the large center console storage bin. Storage nets in all doors keep important items within reach. It's all about having what you need safely and securely at hand.

FRESH AIR

FREEDOM TOP® HARDTOP. An available modular hardtop allows sun-exposure control by separating into three pieces. Get the maximum effect of monochromatic color on your Wrangler Sahara® or Rubicon® with this available roof with matching fender flares.



LET IN SOME SUN, EVEN IN COOL TEMPS. Remove the front two panels of your Freedom Top hardtop³ and get welcome warmth with the available heated leather-trimmed or cloth front-row seats. Controls for heated seats are conveniently located on the dash for easy access.

FIRST-CLASS INTERIOR. Reach out and enjoy Wrangler's soft-touch interior. Available heated power exterior mirrors help keep your vision clear. A new electrochromatic rearview mirror with LED map lights helps to bring more into focus. The steering wheel places speed control, audio, and available Electronic Vehicle Information Center (EVIC) control settings at your fingertips and now includes tire pressure read-outs for individual tires. And what's more, Wrangler Unlimited offers enough room for you and four friends to take to the trails.






SEE THE WORLD FROM A BETTER SEAT

OUR BEST FRONT SEATS ADD MORE CUSHIONED COMFORT TO EVERY ADVENTURE, WITH FULL ADJUSTMENTS AND NEW FABRIC CHOICES. SIT TALL AND PROUD WHEN YOU CHOOSE THE AVAILABLE LEATHER-TRIMMED SEATS ON SAHARA® OR RUBICON®, FEATURING AN EMBROIDERED LOGO ON EACH FRONT SEAT. REAR-SEAT RELEASES ARE RELOCATED TO THE UPPER BACK FOR EASIER ACCESS. OPTIONAL HEATED FRONT SEATS ADD WELCOME WARMTH, SO YOU CAN ENJOY A LONGER TOP-DOWN SEASON OF OPEN-AIR FREEDOM.







Catch some air, soak up the sun, and live the Jeep® life in every way. No other 4x4 in the world comes close for sun-loving adventurers.





ELECTRONIC STABILITY CONTROL (ESC).⁷ This advanced system is designed to assist drivers in maintaining control of their vehicle at all times. It utilizes hydraulic brake assist, traction control, Electronic Roll Mitigation (ERM), and available Trailer Sway Control (TSC) to constantly monitor driver input against the vehicle's actual course. If needed, ESC automatically brakes and/or reduces engine torque, while ERM estimates the potential for wheel lift, reducing engine power and applying brakes if needed. TSC, packaged with the Trailer Tow Group, detects sway unique to trailering and engages the brakes to slow the vehicle, increasing brake force to one side of the vehicle to help counteract the sway from the trailer. ESC has three modes: Full-On, Partial-On (shuts off traction control), and Full-Off (ideal for off-road driving). Standard.



ADVANCED MULTISTAGE FRONT AIR BAGS.⁸ These standard air bags provide nearly instantaneous occupant protection by matching air bag output to crash severity. Standard.

SUPPLEMENTAL FRONT-SEAT MOUNTED SIDE AIR BAGS.⁹ These deploy from the outboard side of each front seat to enhance protection of the driver and front-seat passenger in certain impacts. Each side air bag has its own sensor to trigger the air bag on the side where the impact occurs. Available.

SENTRY KEY® ENGINE IMMOBILIZER. A unique embedded key code matched only to your vehicle helps keep your Wrangler safely where it belongs. Standard.



PREPARED
FOR NEARLY
ANYTHING

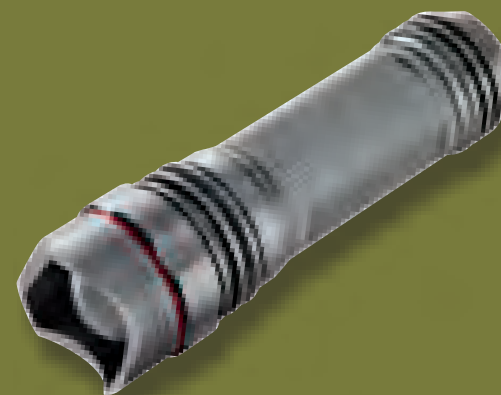


ENERGY-ABSORBING FRONT RAIL EXTENSIONS.

Collapsible, hydroformed front rail tips offer low-speed protection and can be serviced after impact events of up to 8 mph. Standard.

HALOGEN HEADLAMPS AND FOG LAMPS. These bright sources of light improve down-road visibility at night or during inclement weather.

HEATED POWER EXTERIOR MIRRORS. Melt snow and ice off sideview mirrors as you warm up your interior. They also help to keep your mirrors icicle-free as you drive. Available.



ENHANCED ACCIDENT RESPONSE SYSTEM (EARS). This system makes it easier for emergency personnel to see and reach occupants in the event of an accident, turning on interior lighting, flashing hazard lamps, and unlocking doors after air bag deployment. It also shuts off the flow of fuel to the engine. Standard.

HILL START ASSIST (HSA) AND HILL DESCENT CONTROL. HSA works to prevent Wrangler from rolling when starting on an up- or downhill gradient. It holds the vehicle stationary for two seconds after the driver's foot is removed from the brake pedal, allowing time to apply the throttle. Hill Descent Control is packaged with the available 5-speed automatic transmission and diligently works to help Wrangler navigate steep declines at a steady and consistent speed. Standard.

» **CARGO ROOM.** You, your gear, and your four-footed friends have ample room to roam. Wrangler Unlimited boasts 70 cu ft of cargo space when the rear seats are folded down.

» **SIDESADDLE CUBBY.** You'll appreciate driver-side door storage for smaller packables. The mesh net holds items tight, while keeping them in sight.

» **LOCKABLE CENTER CONSOLE STORAGE.** With open-air freedom comes a secure place to store your goods. A lift-out tray helps things stay organized. Underneath, there's plenty of room to put CDs, a camera, an MP3 player, and other fun or functional items.

PACK IT IN

» **GLOVE COMPARTMENT.** While the name suggests one option, there are certainly plenty more uses for this large, lockable space.

» **REAR CARGO MAT AND STORAGE.** A reversible cargo mat protects your carpet, while a storage bin beneath Wrangler's rear floor helps keep valuables secure. It features a lift-out tray with convenient storage for door and hardtop bolts.





ADVENTURE
AWAITS

SPORT



STANDARD

- > Pentastar® 3.6L V6 engine with 6-speed manual transmission
- > Command-Trac® 4WD system
- > Dana® 44 heavy-duty rear axle
- > Dana front axle
- > Electronic Stability Control (ESC)⁷
- > Hill Start Assist (HSA)
- > Electronic Roll Mitigation (ERM)
- > Sentry Key® anti-theft engine immobilizer
- > Skid plates for fuel tank and transfer case
- > Front and rear tow hooks
- > Removable front air dam
- > Leather-wrapped steering wheel with speed/audio controls (Sport "S")
- > Halogen headlamps and fog lamps
- > Sunrider® Soft Top
- > Full-framed removable doors³
- > Uconnect® 130
- > Six-speaker audio system
- > NEW cloth seating
- > Full center console with locking storage
- > Reversible cargo mat with Jeep® logo
- > Wash-out interior with removable carpet and drain plugs
- > 16-inch slot-spoke steel painted wheel
- > 17-inch 5-spoke Sparkle Silver painted aluminum wheel (Sport "S")

For a full list of optional features, explore the enclosed Buyer's Guide at the back of the catalog, or visit jeep.com.

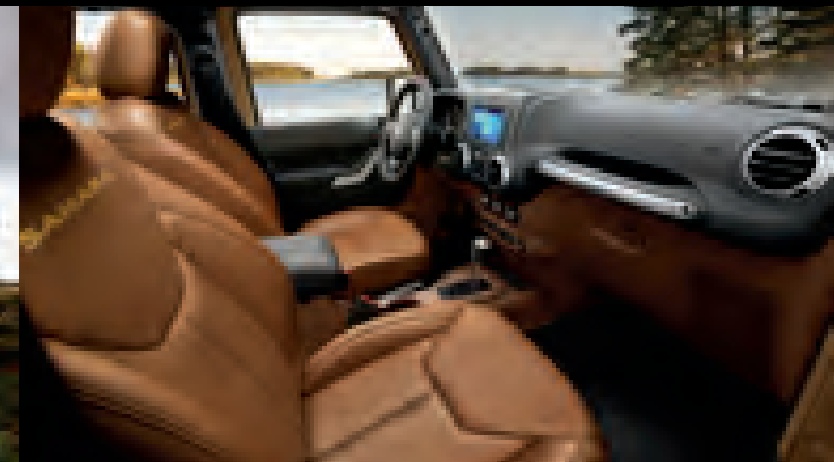
SAHARA®



STANDARD

- > Pentastar® 3.6L V6 engine with 6-speed manual transmission
- > Command-Trac® 4WD system
- > Dana® 44 heavy-duty rear axle
- > Dana front axle
- > Electronic Stability Control (ESC)⁷
- > Hill Start Assist (HSA) and Electronic Roll Mitigation (ERM)
- > Sentry Key® anti-theft engine immobilizer
- > Skid plates for fuel tank and transfer case
- > Front and rear tow hooks and removable front air dam
- > Tubular side steps
- > Body-color fender flares
- > Sunrider® Soft Top
- > Full-framed removable doors³
- > Uconnect® 130
- > Alpine® Premium Sound System
- > SiriusXM Satellite Radio⁴
- > NEW "SAHARA" embroidered cloth and leather seating
- > Full center console with locking storage
- > Leather-wrapped steering wheel with speed/audio controls
- > 18-inch Sparkle Silver wheels, NEW
- > Power Convenience Group, including remote keyless entry and security system

For a full list of optional features, explore the enclosed Buyer's Guide at the back of the catalog, or visit jeep.com.



RUBICON®



STANDARD

- > Pentastar® 3.6L V6 engine with 6-speed manual transmission
- > Rock-Trac® 4WD system
- > Tru-Lok® front/rear locking differentials
- > Front sway bar disconnect system
- > Dana® 44 heavy-duty front/rear axles
- > High-pressure monotube shocks with tunable valves
- > Performance suspension system
- > Electronic Stability Control (ESC)⁷
- > Hill Start Assist (HSA) and Electronic Roll Mitigation (ERM)
- > Sentry Key® antitheft engine immobilizer
- > NEW "RUBICON" embroidered cloth and leather seating
- > Skid plates for fuel tank and transfer case
- > Front and rear tow hooks, removable front air dam, rock rails
- > Sunrider® Soft Top
- > Uconnect® 130
- > Alpine® Premium Sound System
- > SiriusXM Satellite Radio⁴
- > Full center console with locking storage
- > Leather-wrapped steering wheel with speed/audio controls
- > Power Convenience Group, including remote keyless entry and security system (Unlimited models only)
- > 17-inch polished aluminum Gray wheels, new

For a full list of optional features, explore the enclosed Buyer's Guide at the back of the catalog, or visit jeep.com.

MOAB EDITION

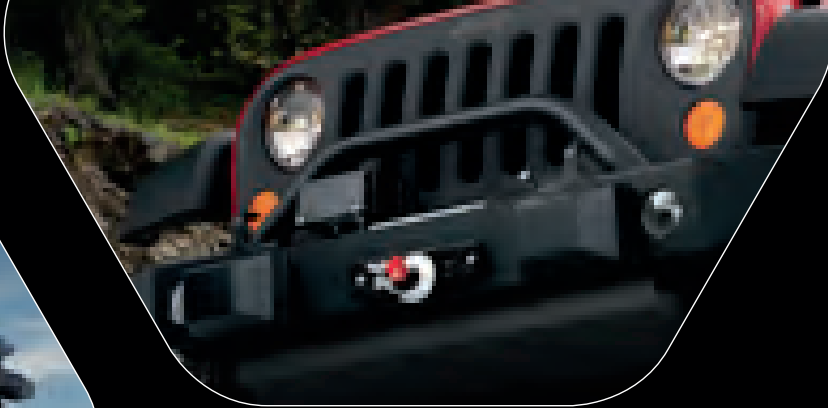
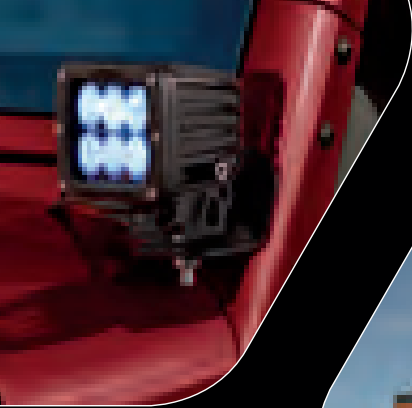


STANDARD

- > Pentastar® 3.6L V6 engine with 6-speed manual transmission
- > Command-Trac® 4WD system
- > Dana® 44 heavy-duty rear axle
- > Dana 30 front axle
- > Electronic Stability Control (ESC)⁷
- > Hill Start Assist (HSA) and Electronic Roll Mitigation (ERM)
- > Sentry Key® antitheft engine immobilizer
- > Skid plates for fuel tank and transfer case
- > Front and rear tow hooks and removable front air dam
- > Tubular side steps
- > Black fender flares
- > Sunrider® Soft Top
- > Full-framed removable doors³
- > Uconnect® 130
- > Six-speaker audio system
- > SiriusXM Satellite Radio⁴
- > Leather-trimmed seats
- > Full center console with locking storage
- > Leather-wrapped steering wheel with speed/audio controls
- > 17-inch Medium Gloss Black wheels
- > Goodyear® P245/75R17 Silent Armor OWL tires
- > Connectivity Group
- > Power Convenience Group
- > "MOAB" IP grab handle
- > Slush mats

For a full list of optional features, explore the enclosed Buyer's Guide at the back of the catalog, or visit jeep.com.





AUTHENTIC JEEP® ACCESSORIES



Choose Mopar® for quality parts and accessories made to custom-fit your Wrangler. Mile after mile, you'll keep going strong with our expert service, genuine parts, Express Lane Service, and our online Owner Connect Web site (register at owners.jeep.com). See your Jeep dealer for all the latest parts and accessories. You can learn more about the world of Mopar and all it has to offer at mopar.com.



EXPRESS YOUR
TRUE NATURE

Uncover an extensive line of fun that's been developed exclusively for the Jeep® brand enthusiast. From authentic wearables to unique gifts, all items are as rugged and durable as your Jeep vehicle. There's more to life when you can express what really moves you. Learn more at jeep.com/gear.

Jeep Gear

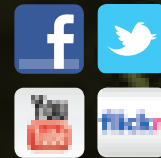


DISCOVERY LOVES COMPANY



BEING RESOURCEFUL

Take a closer look at Jeep® Wrangler by exploring the enclosed Buyer's Guide or visiting us on the Web. The Jeep brand offers an expansive array of portals for social media, shopping, and owner resources, plus you can discover one-of-a-kind events that can create lifelong connections with like-minded friends. Expand your adventures in every direction by visiting jeep.com.



GO MOBILE. Take an engaging, multimedia tour of your vehicle on your mobile device. Visit the Chrysler Group LLC page in iTunes® from your smartphone or iPad® to download the most up-to-date apps on all of the company's vehicles. Log on to the jeep.com mobile site for a comprehensive, at-a-glance review of what you need to know about your Jeep vehicle. Experience visual and interactive demonstrations of the entire lineup, gaining access to product information at your fingertips, wherever you go.

JEEP SOCIAL ADVENTURES. There's more to living the Jeep life when your horizons are expanded to include authentic and active Jeep online communities. Post stories, share photos, watch videos, and get the latest news from Jeep gearheads and engineers. Fellow Jeep enthusiasts are waiting to hear from you on Facebook (facebook.com/Jeep), Twitter (twitter.com/Jeep), Flickr (flickr.com/Jeep) and YouTube (youtube.com/TheJeepChannel). Tune in, turn us on, and get out into the virtual world where thrilling adventures are happening every single day.

JEEP JAMBOREES. For those who are driven by an adventurous spirit, we invite you to join us on the trail. You can head for parts unknown or return to fun, familiar places. Jeep Jamboree USA offers off-road adventure weekends that bring together the outdoors, down-to-earth people, and their Jeep 4WD vehicles. We invite you to explore America's remote backcountry, where great friendships and memories are made.

(1) Based on Ward's Small Sport/Utility Vehicle segmentation. (2) Do not attempt water fording unless depth is known to be less than 30 inches. Traversing water can cause damage that may not be covered by the new vehicle warranty. Always off-road responsibly in approved areas. (3) Be sure to follow all instructions in Owner's Manual for removal of top, doors, and lowering of windshield. Driving with doors off and windshield down is for off-road use only. (4) SiriusXM service requires a subscription, sold separately, after 12-month trial included with vehicle purchase. If you decide to continue your SiriusXM service at the end of the trial subscription, the plan you choose will automatically renew and bill at the current rates until you call SiriusXM at 1-866-635-2349 to cancel. See our Customer Agreement for complete terms at siriusxm.com. Sirius satellite service is available only to those at least 18 and older in the 48 contiguous United States, D.C., and P.R. (with coverage limitations). SiriusXM Traffic available in select markets. See siriusxm.com/traffic for more information. Sirius, XM, and all related marks and logos are trademarks of SiriusXM Radio Inc. (5) Phone must support Bluetooth Phone Book Access Profile (PBAP). (6) Uconnect Web feature is not intended for use by the driver while the vehicle is in motion. Always drive carefully. Subscription required. (7) No system, no matter how sophisticated, can repeal the laws of physics or overcome careless driving actions. Performance is limited by available traction, which snow, ice, and other conditions can affect. When the ESC warning lamp flashes, the driver needs to use less throttle and adapt speed and driving behavior to prevailing road conditions. Always drive carefully, consistent with conditions. Always wear your seat belt. (8) The Advanced Front Air Bags in this vehicle are certified to the new U.S. federal regulations for advanced air bags. Children 12 years old and younger should always ride buckled up in a rear seat. Infants in rear-facing child restraints should never ride in the front seat of a vehicle with a passenger front air bag. All occupants should always wear their lap and shoulder belts properly.

This brochure is a publication of Chrysler Group LLC. All product illustrations and specifications are based upon current information at the time of publication approval. Chrysler Group LLC reserves the right to make changes from time to time, without notice or obligation, in prices, specifications, colors, materials, and to change or discontinue models, which are considered necessary to the purpose of product improvement or for reasons of design and/or marketing. Chrysler, Jeep, the Jeep Grille, Rubicon, Sahara, Wrangler, J-41, Command-Trac, Freedom Top, Mopar, Pentastar, Rock-Trac, Sentry Key, Trail Rated, Tru-Lok, and Uconnect are registered trademarks of Chrysler Group LLC. Alpine and the Alpine logo are registered trademarks of Alpine Electronics, Inc. BFGoodrich is a registered trademark of Goodrich Corporation. All rights reserved. Bluetooth is a registered trademark of Bluetooth SIG, Inc. Bridgestone is a registered trademark of Bridgestone Corporation. Dana and Trac-Lok are registered trademarks of Dana Corporation. Facebook and logo are registered trademarks of Facebook, Inc. Flickr is a registered trademark of Yahoo! Inc. Garmin and the Garmin logo are registered trademarks of Garmin, Ltd. or its subsidiaries and are registered in one or more countries, including the U.S. Goodyear is a registered trademark of The Goodyear Tire & Rubber Company. iPad, iPod, and iTunes are registered trademarks of Apple Inc. H2Xtreme is a trademark of Oceanic Trading Company Limited. NFL is a registered trademark of the National Football League. NASCAR is a registered trademark of the National Association for Stock Car Auto Racing, Inc. Sirius, XM, and all related marks and logos are trademarks of SiriusXM Radio Inc. Sunrider is a registered trademark of Bestop, Inc. Timbuk2 is a registered trademark of Timbuk designs, Inc. The Twitter name, logo, Twitter T, Tweet, and Twitter bird are trademarks of Twitter, Inc. in the United States and other countries. WARN is a registered trademark of Warn Industries, Inc. YouTube is a registered trademark of Google Inc. © 2012 Chrysler Group LLC. All rights reserved.