

# INFINITI SAFETY SHIELD



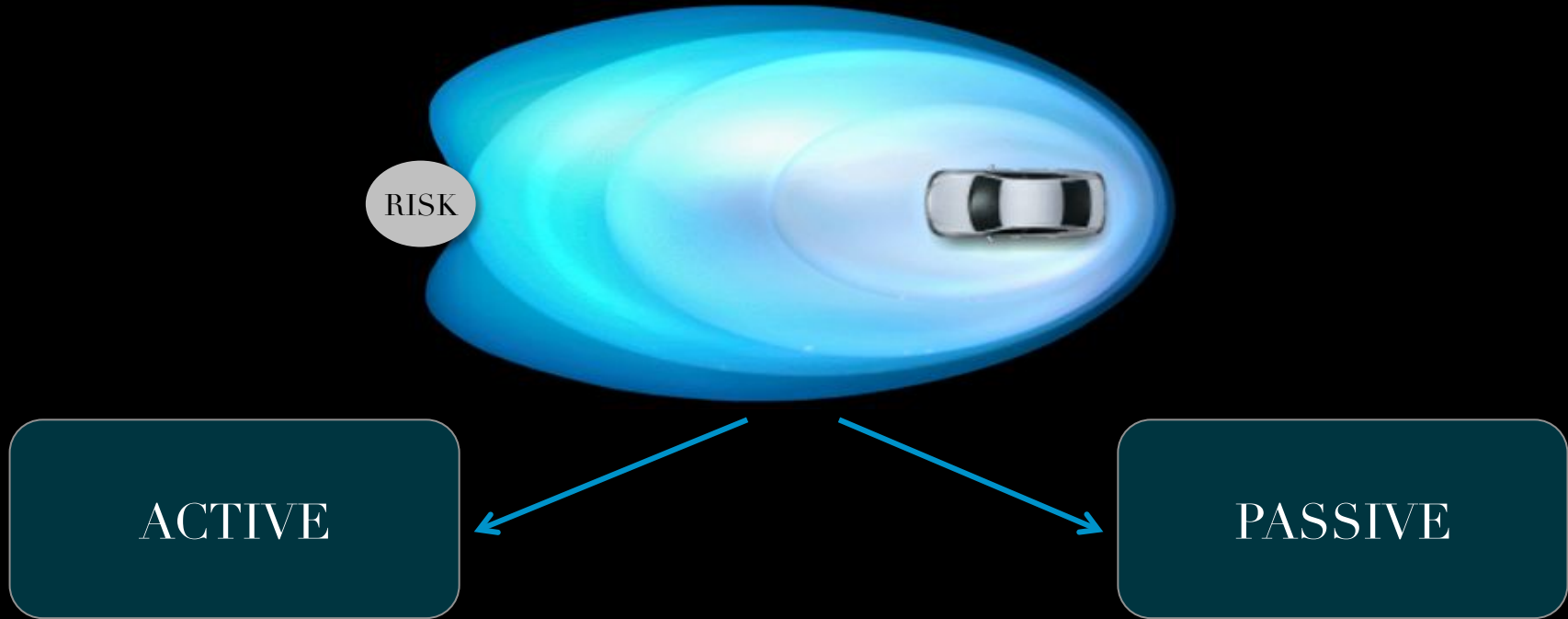
# BERT BROOKS

SENIOR MANAGER, PRODUCT PLANNING – INFINITI Q50

INFINITI AMERICAS



# SAFETY SHIELD – LEADERSHIP IN BOTH AREAS



# SAFETY SHIELD MILESTONES

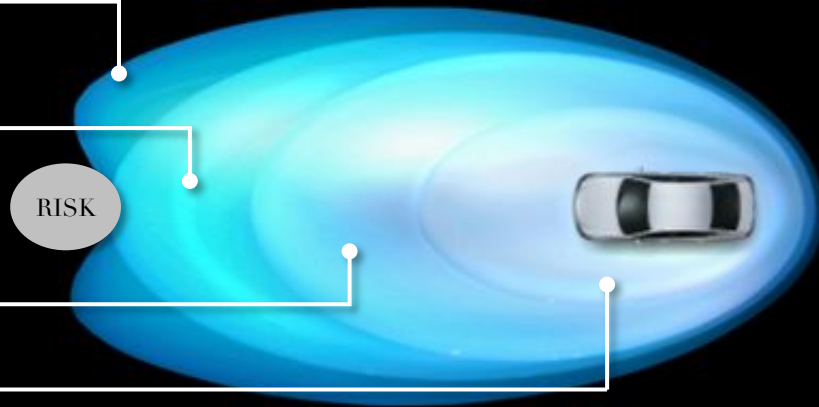
- The Q50 activates various zones according to the circumstances, from normal driving to accident, to help maintain distance from potentially dangerous conditions or help mitigate injuries should a collision occur

Risk has not yet appeared

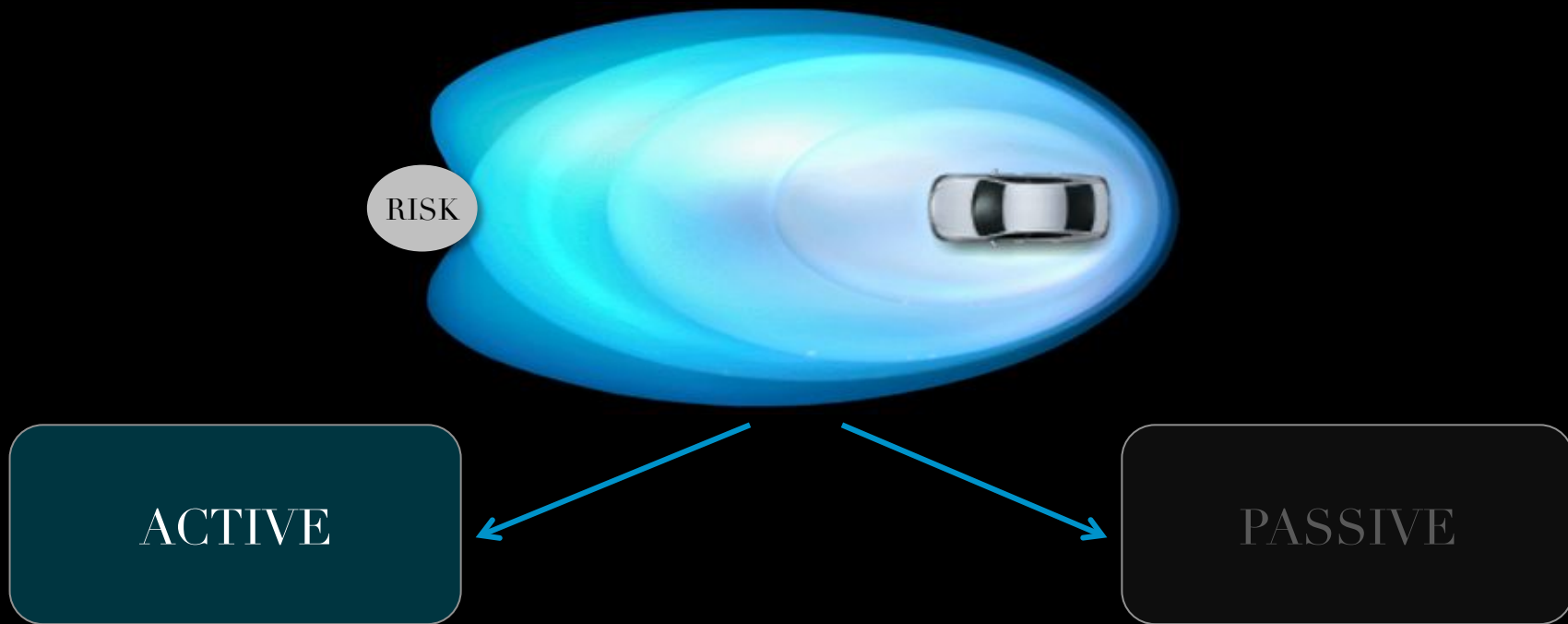
Risk has appeared

Crash may occur

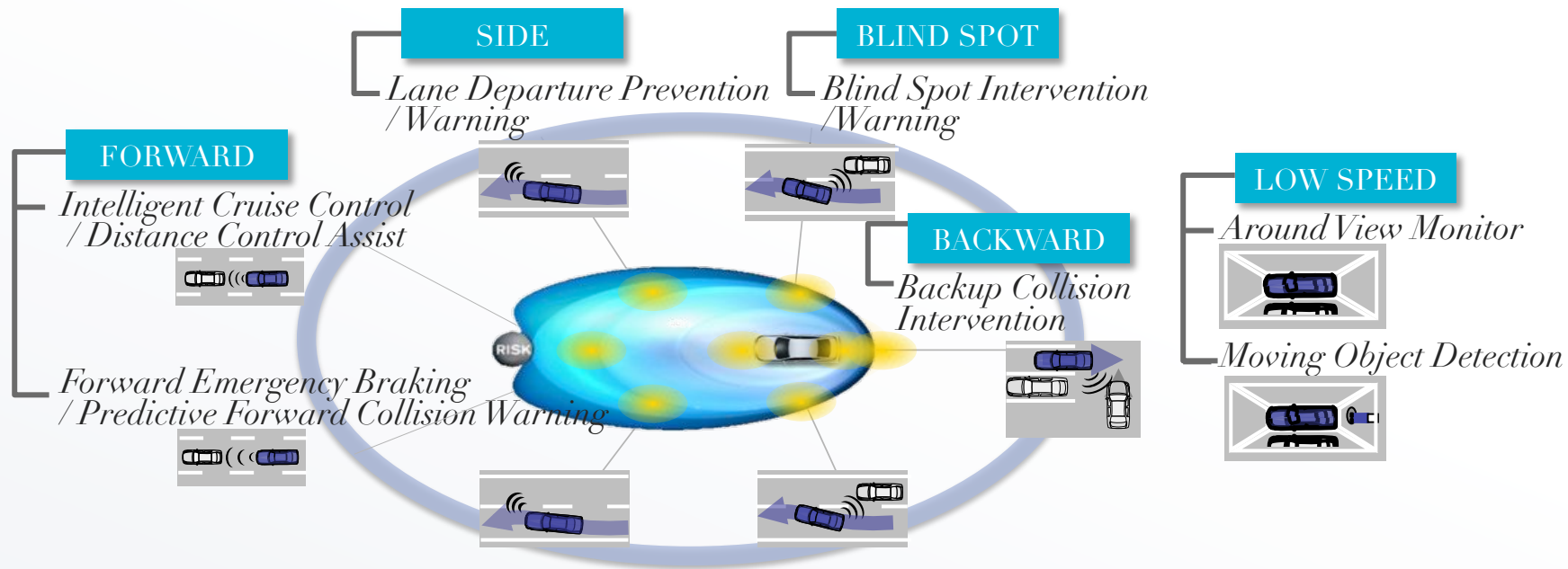
Crash is unavoidable



# SAFETY SHIELD – ACTIVE



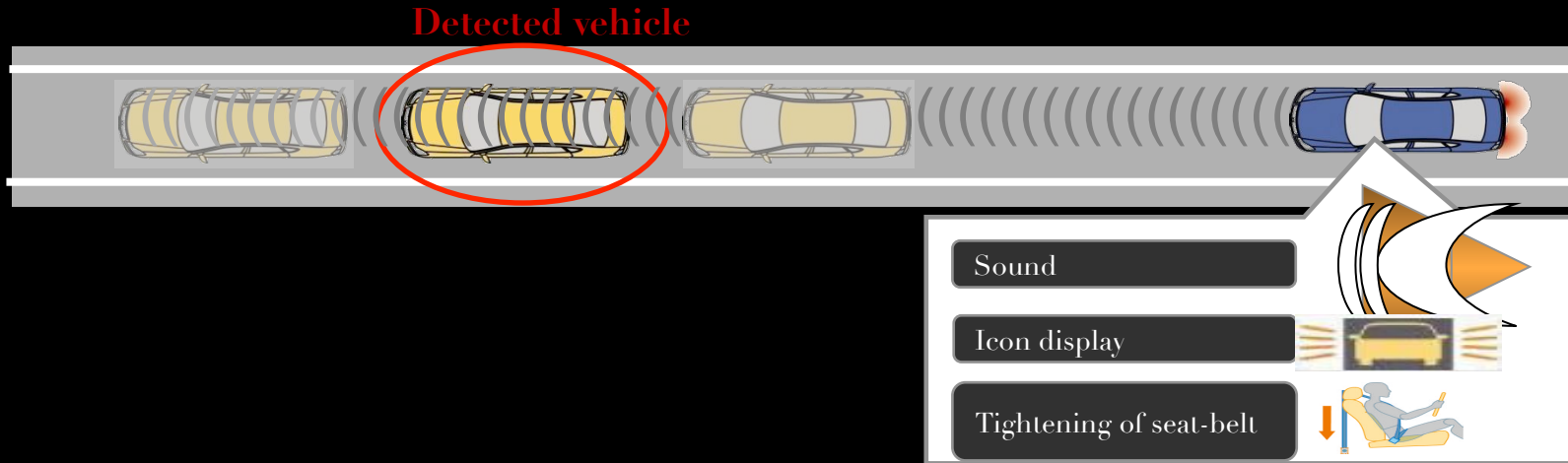
# SAFETY SHIELD – ACTIVE





# PREDICTIVE FORWARD COLLISION WARNING

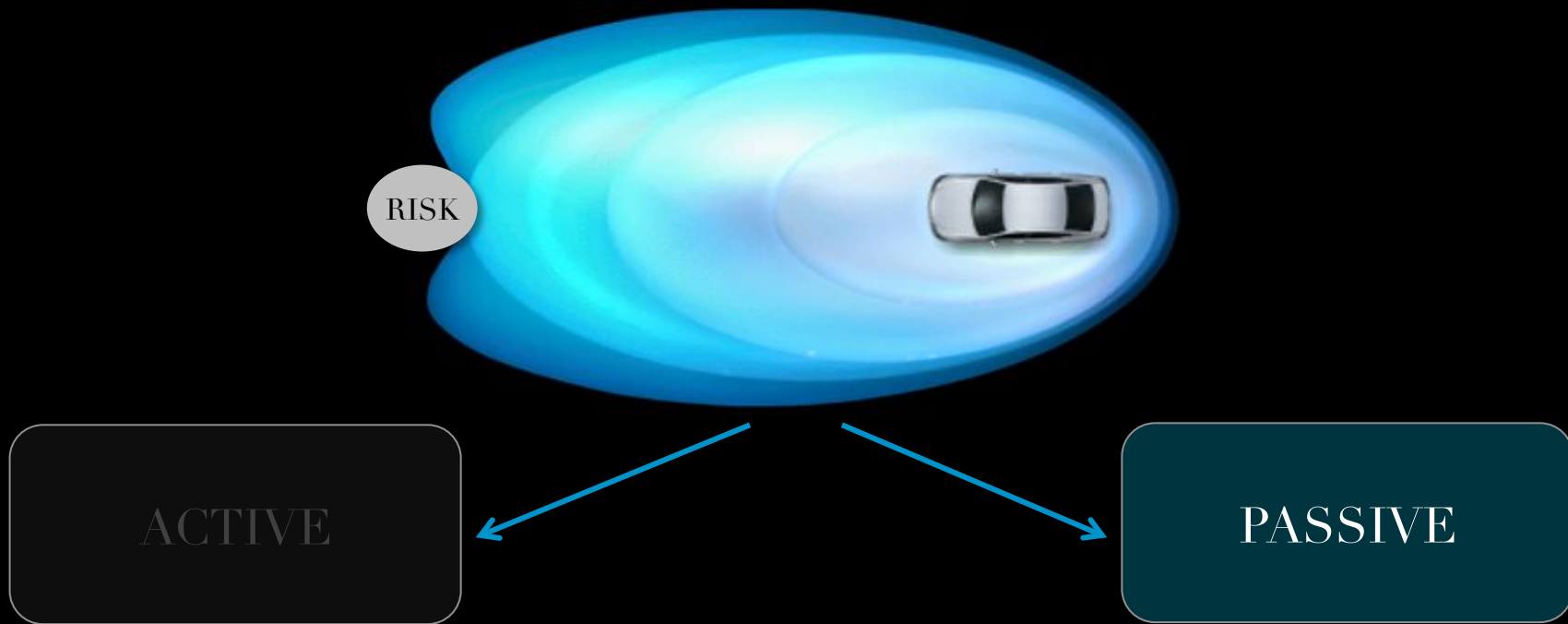
- Helping to prevent collisions by alerting the driver to danger from vehicles that can't be seen
- The radar detects a fall in the speed of the vehicle that is two cars ahead, and alerts the driver through sound, display, and tightening of the seat-belt





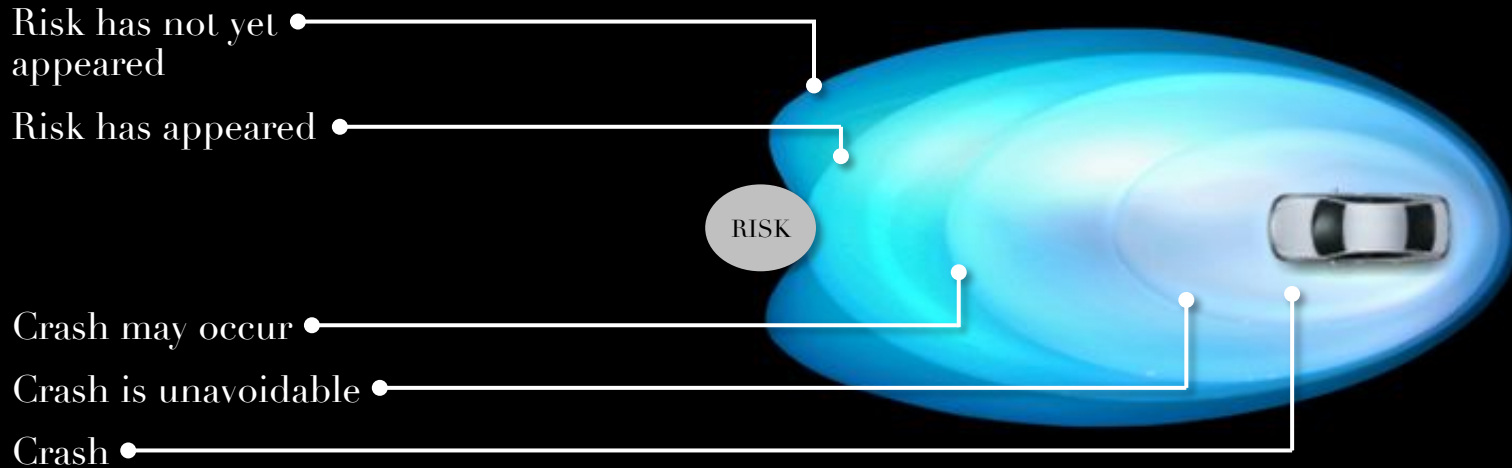


# SAFETY SHIELD – PASSIVE



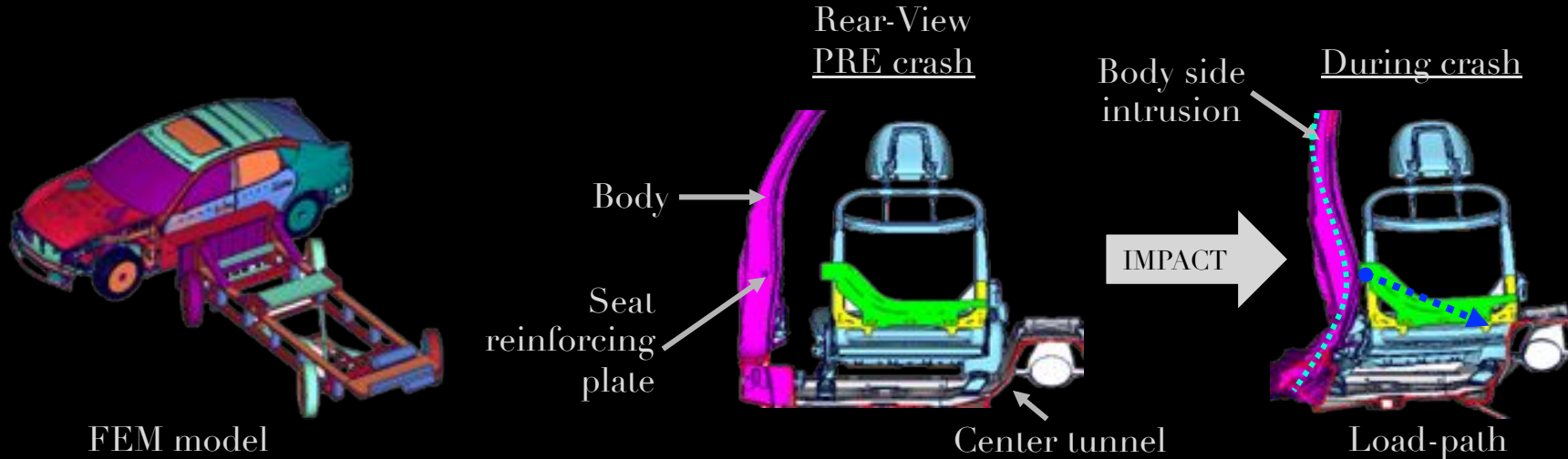
# SAFETY SHIELD – PASSIVE

- The vehicle activates various barriers according to the circumstances, from normal driving to post-accident, to help maintain distance from potentially dangerous conditions or help mitigate injuries should a collision occur



# INTELLIGENT LOAD-SHIFTING SEATS

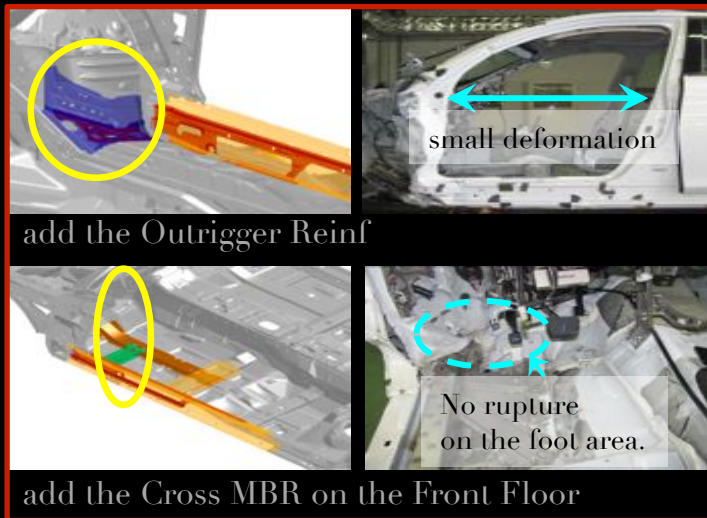
- The body side intrusion is reduced by the high efficiency load path structure
- Energy is refocused from the seat to the transmission tunnel
- Intelligent load-shifting within seats



# CRASH TEST PERFORMANCE

- Q50 performance in severe small overlap crash test

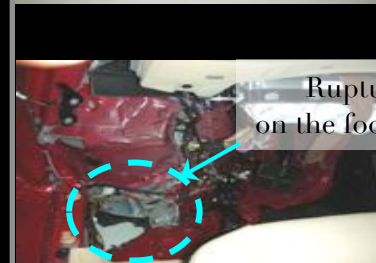
Q50



Competitor A



Competitor B



# SAFETY SHIELD CONCLUSION

- Safety Shield – active and passive
- Eyes-all-round for low speed maneuvering
- Back-up collision intervention
- Predictive forward collision warning
- Lane departure prevention
- Load-shifting seats



# INFINITI SAFETY SHIELD

