

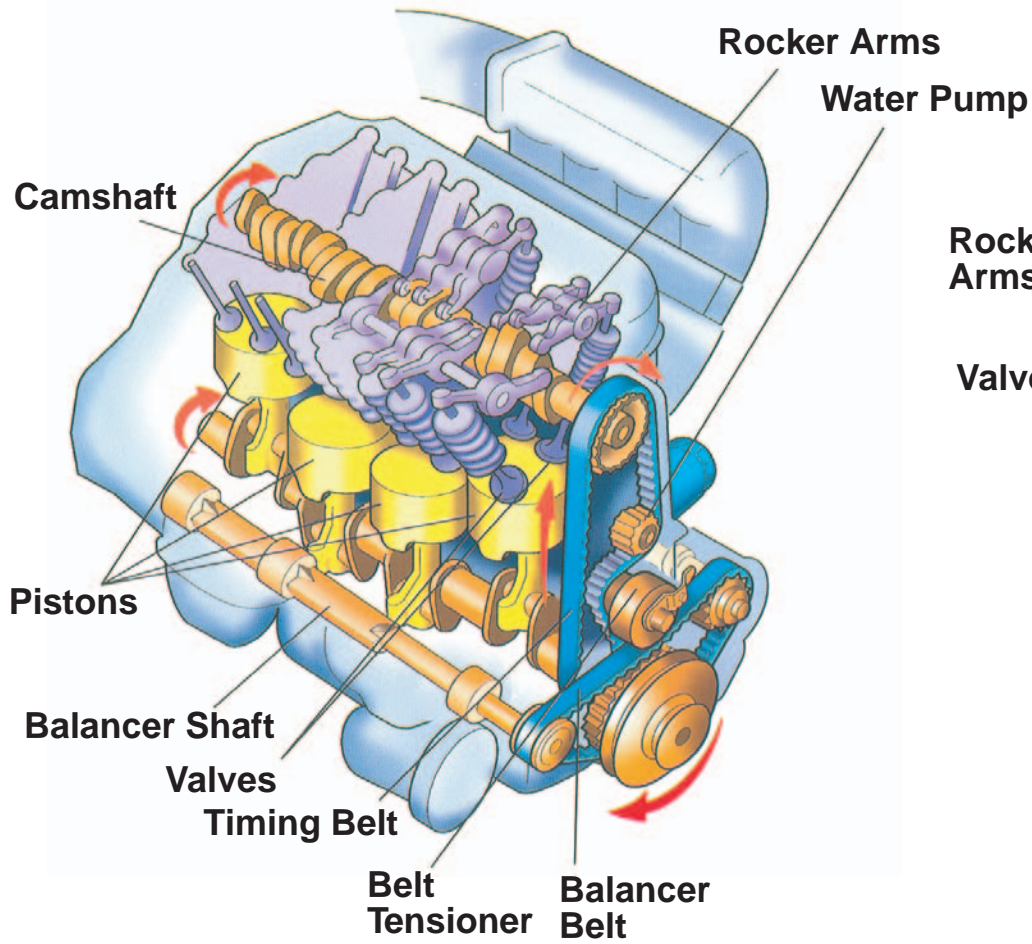
**Service Advisor
Illustrated Technical Guide**

Contents

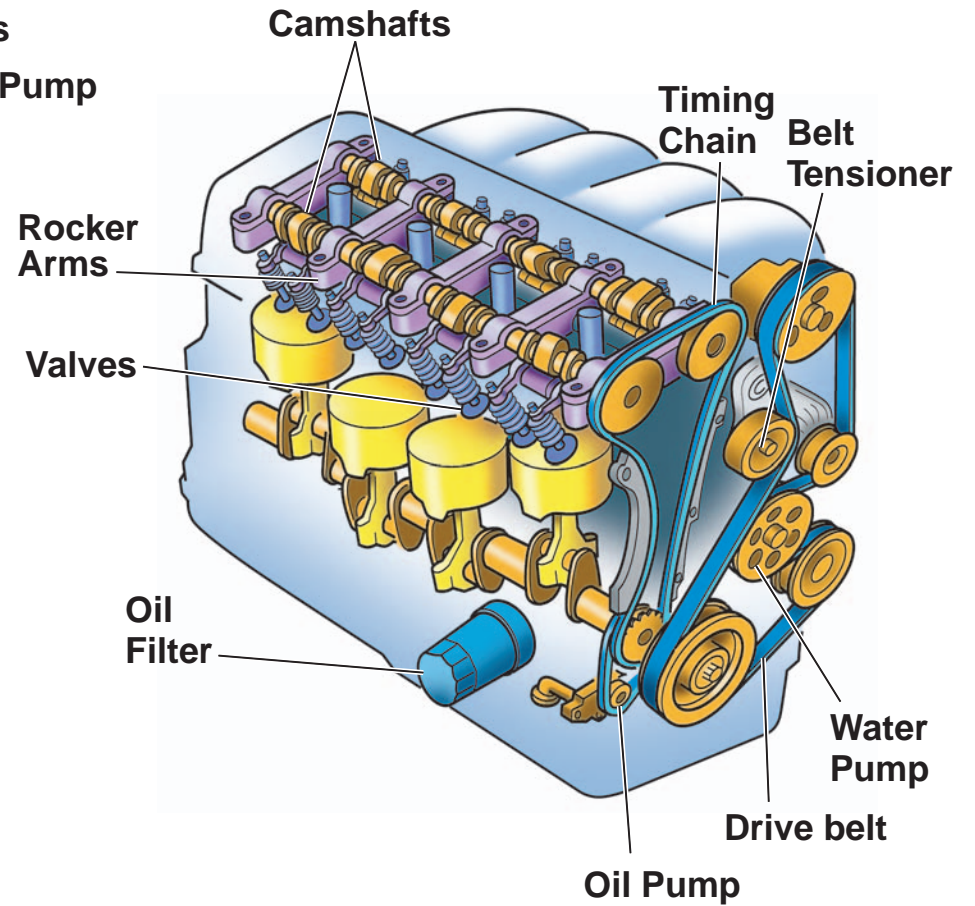
Drawing	Page	Drawing	Page
L4 Engine.....	1	Front Suspension.....	16
L4 Engine - Exploded View.....	2	Rear Suspension.....	17
V6 Engine.....	3	Tire Wear and Wheel Alignment.....	18
V6 Engine - Exploded View.....	4	ABS (Anti-lock Brake System).....	19
Oil Filter	5	Conventional Brake System (non-ABS).....	20
VTEC (Variable Timing Electronic Control) System.....	6	Doors and Windows.....	21
Fuel and Air Intake Systems.....	7	Engine Cooling and Vehicle Heating Systems.....	22
Evaporative Emissions System.....	8	Air Conditioning System.....	23
Exhaust Systems.....	9	Starting and Charging System.....	24
Automatic Transmission.....	10	Direct Ignition System.....	25
Clutch Assembly.....	11	Distributor Ignition System.....	26
4-Wheel Drive System (VTM-4).....	12	Hybrid IMA (Integrated Motor Assist) System.....	27
Driveshafts and CV (Constant Velocity) Joint Boots....	13	Audio and Entertainment Systems.....	28
Rack and Pinion Steering.....	14	Navigation System (with HandsFreeLink, if equipped).....	29
VSA (Vehicle Stability Assist) and TCS (Traction Control System).....	15	SRS (Supplemental Restraint System).....	30
		Odyssey Power Sliding Doors.....	31

L4 Engine

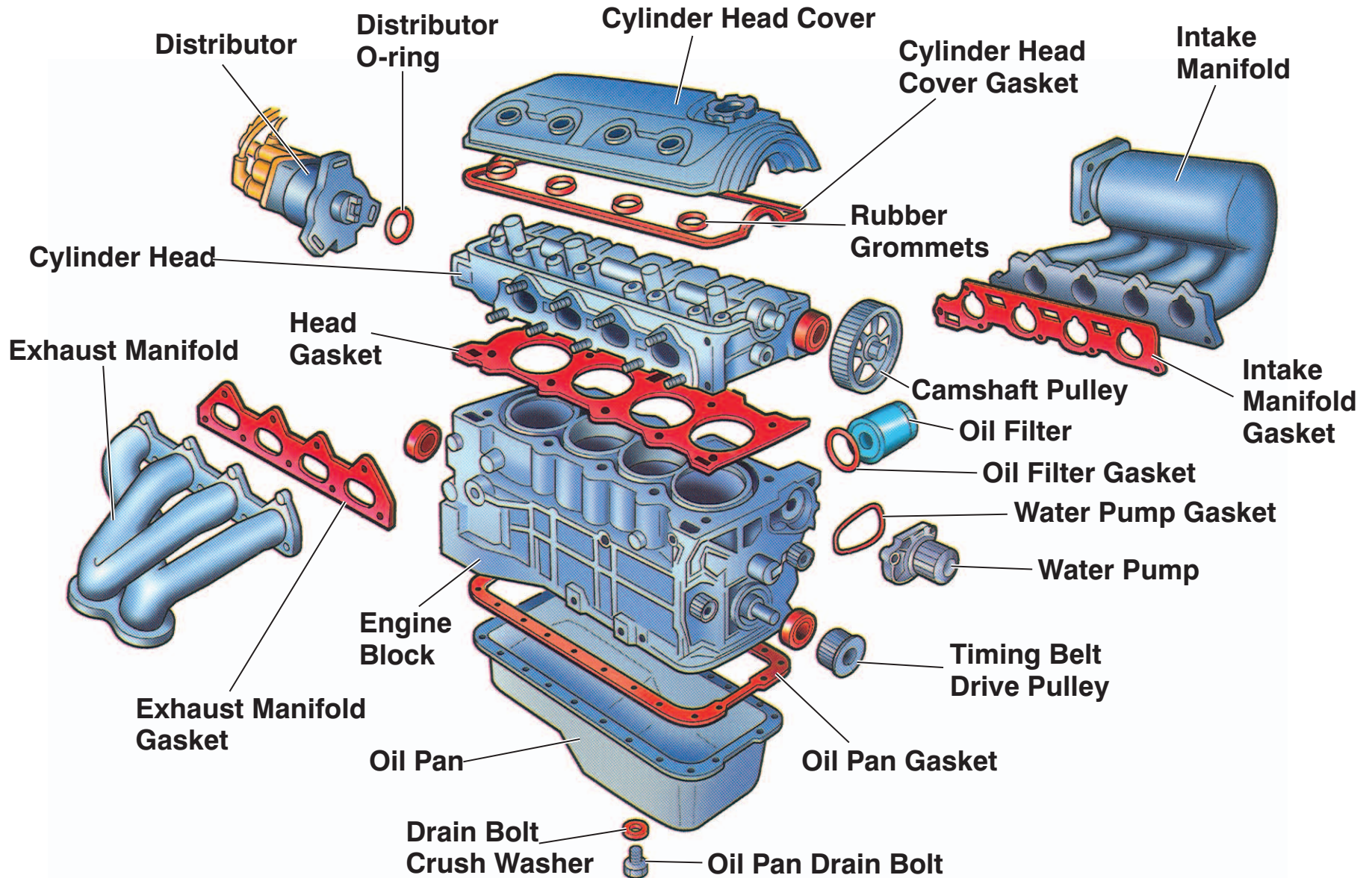
SINGLE OVERHEAD CAM



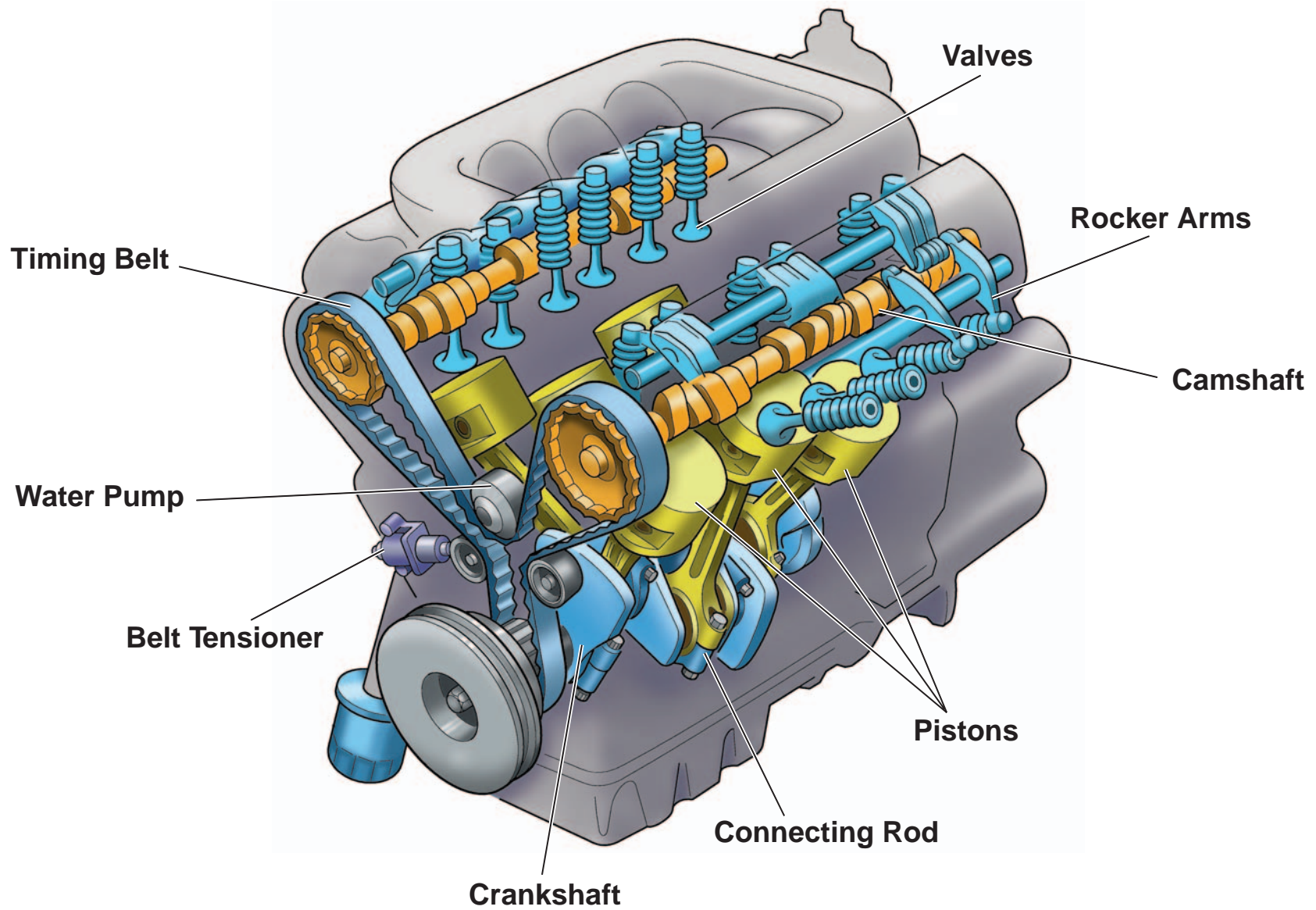
DOUBLE OVERHEAD CAM



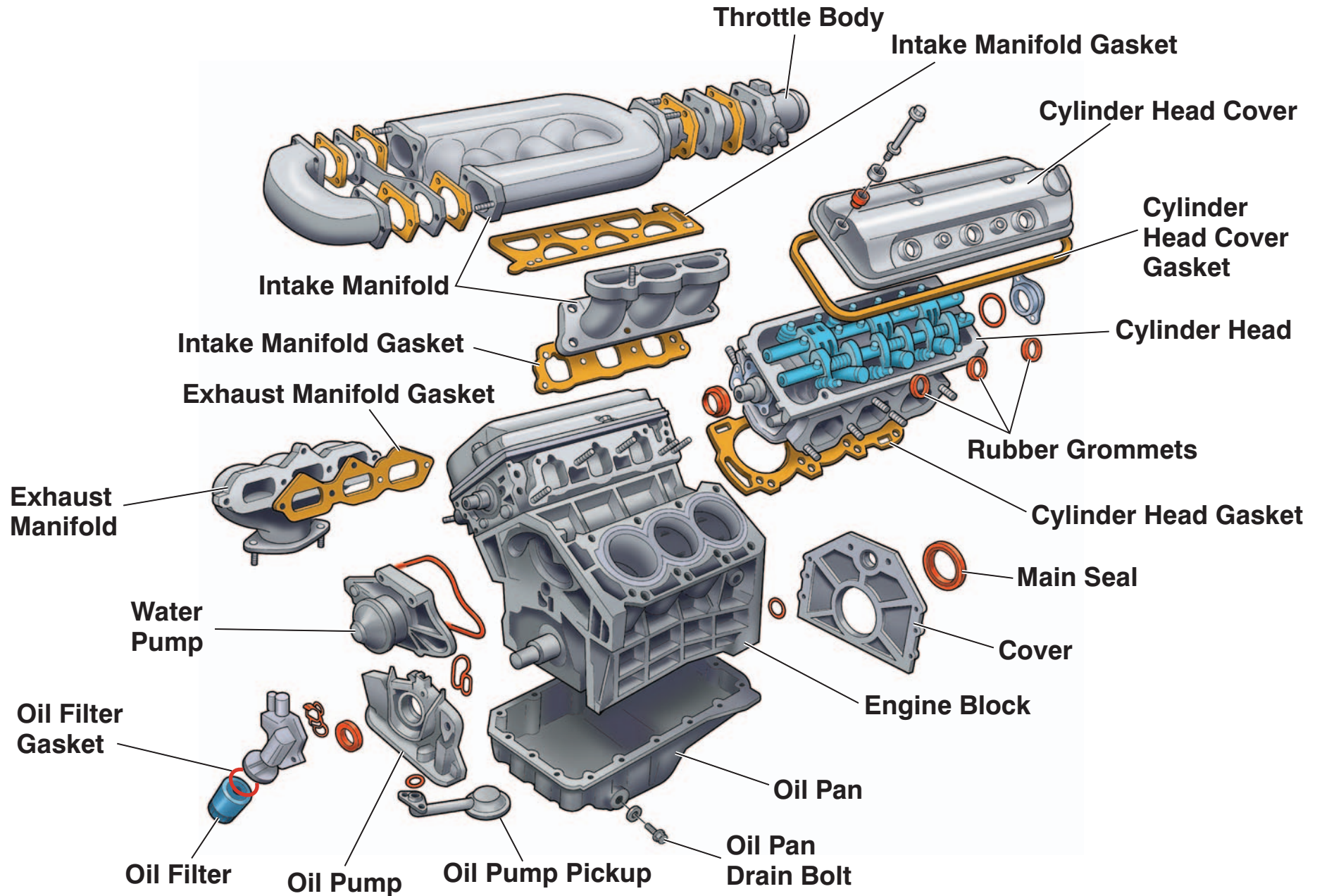
L4 Engine - Exploded View



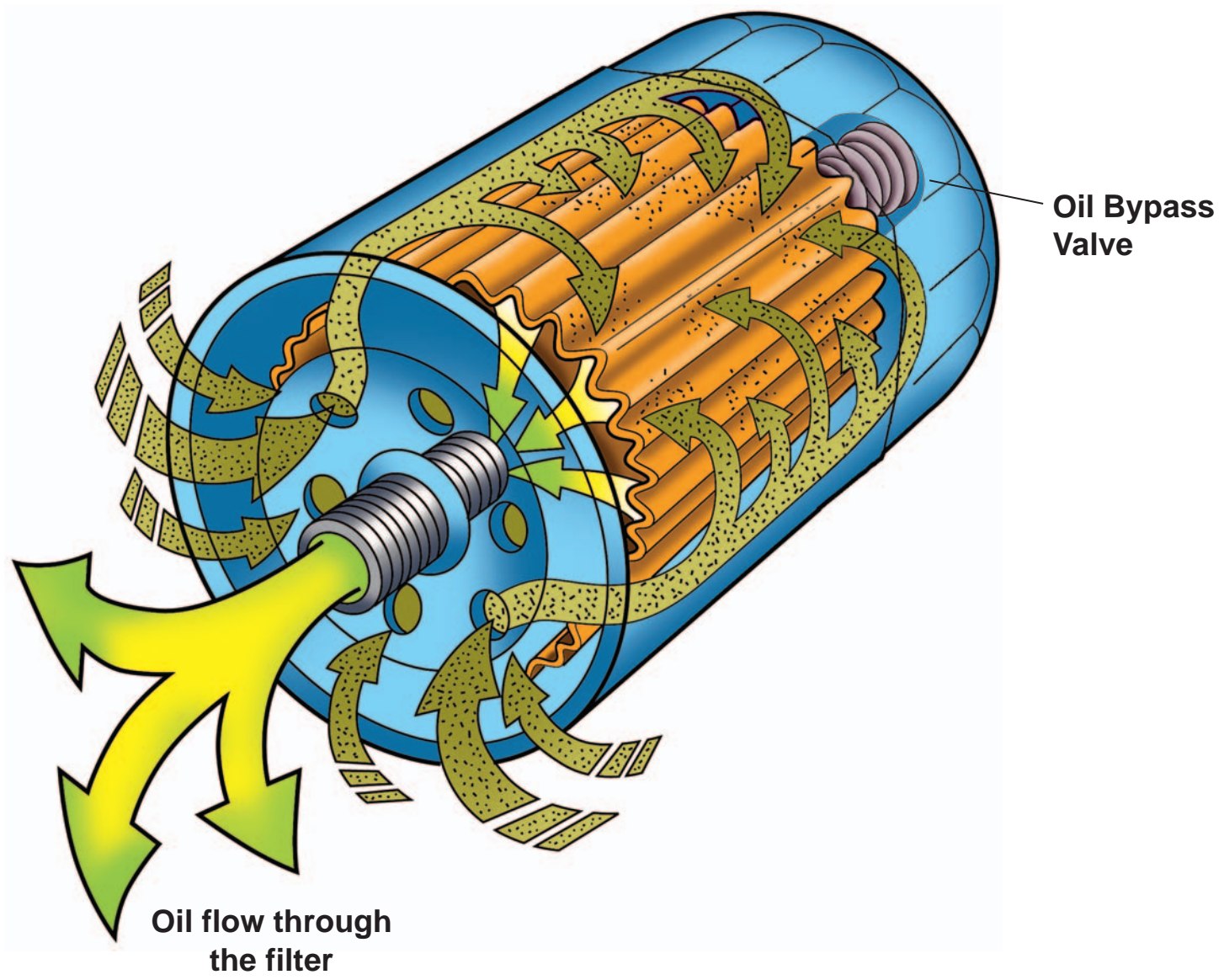
V6 Engine



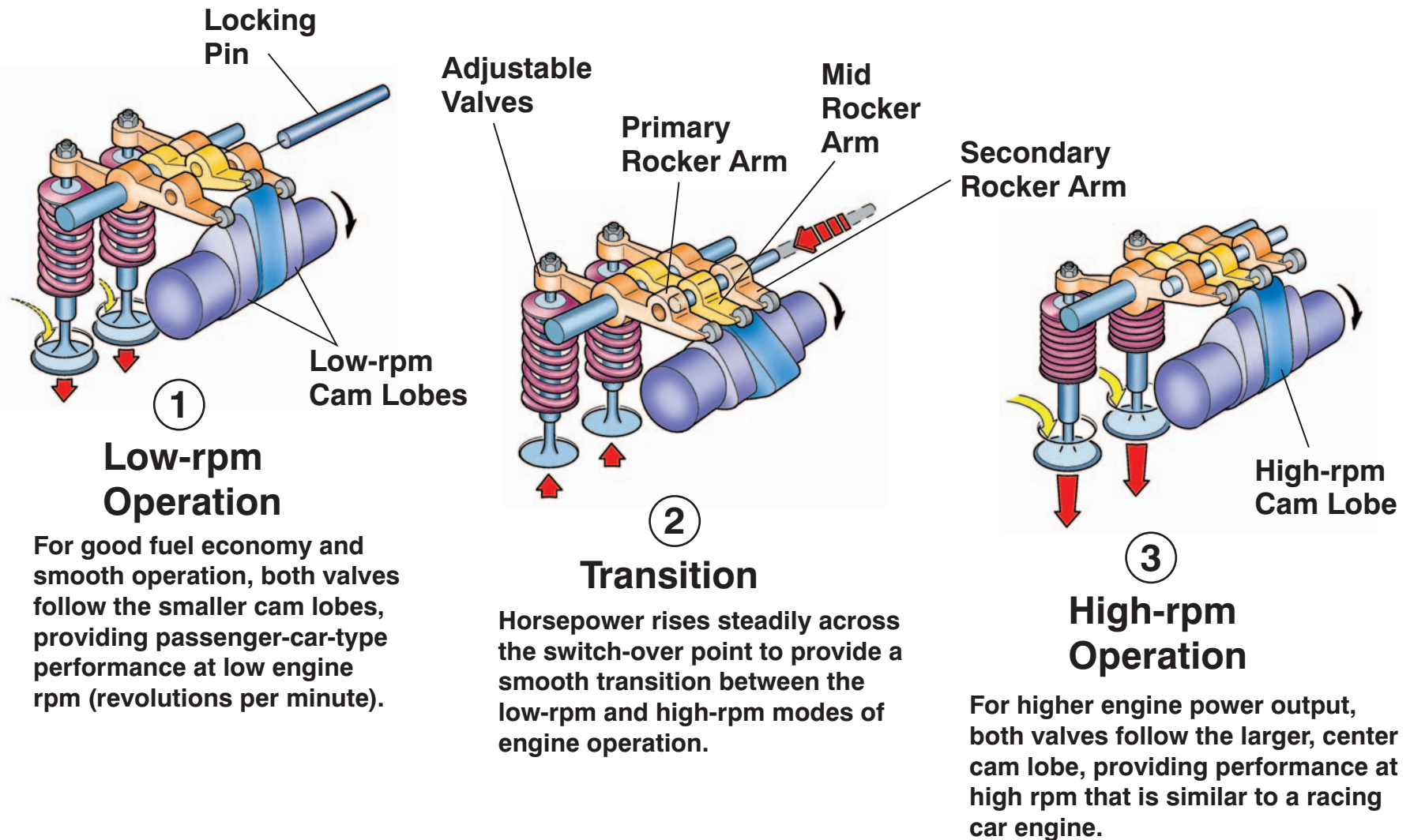
V6 Engine - Exploded View



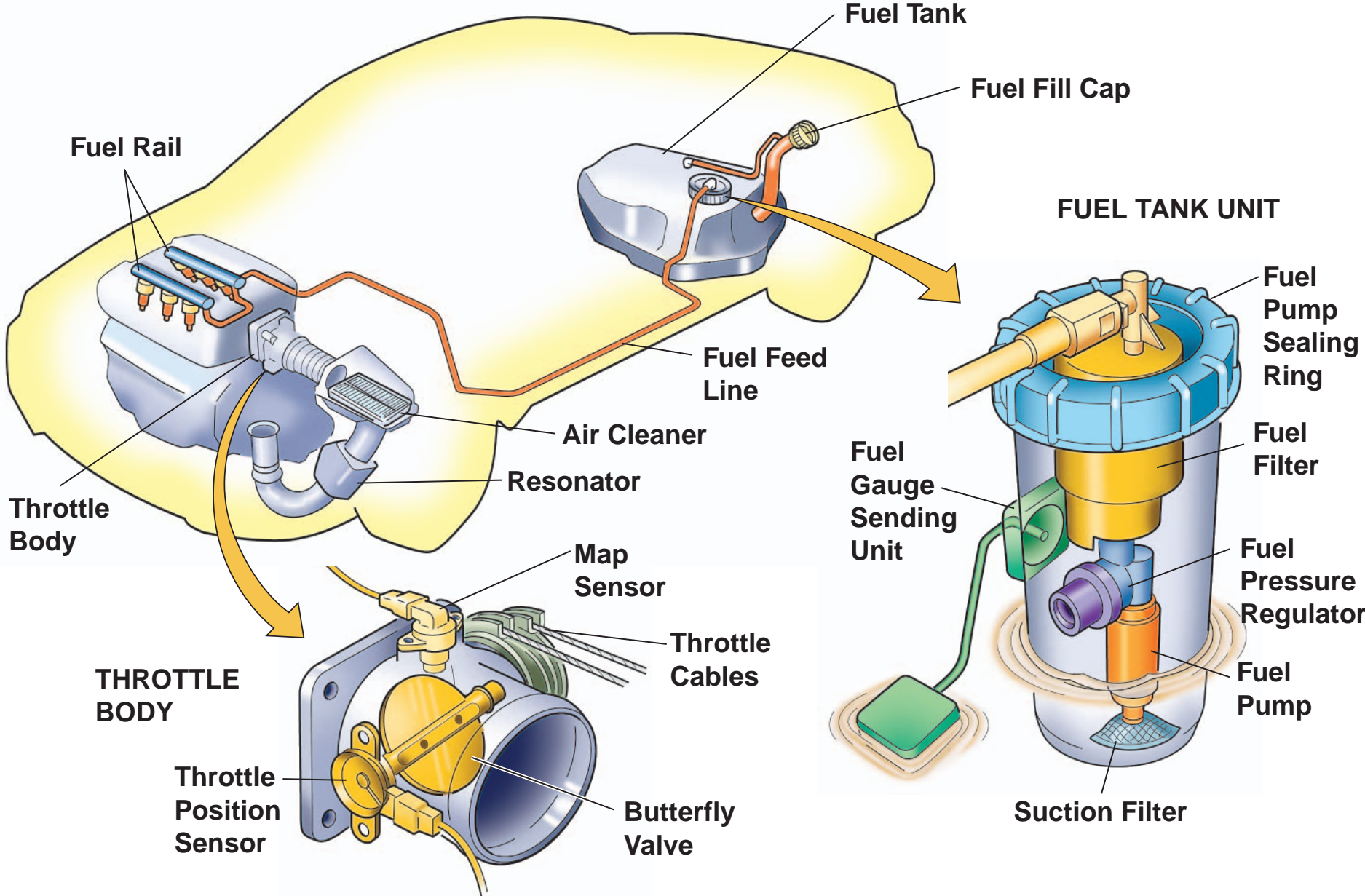
Oil Filter



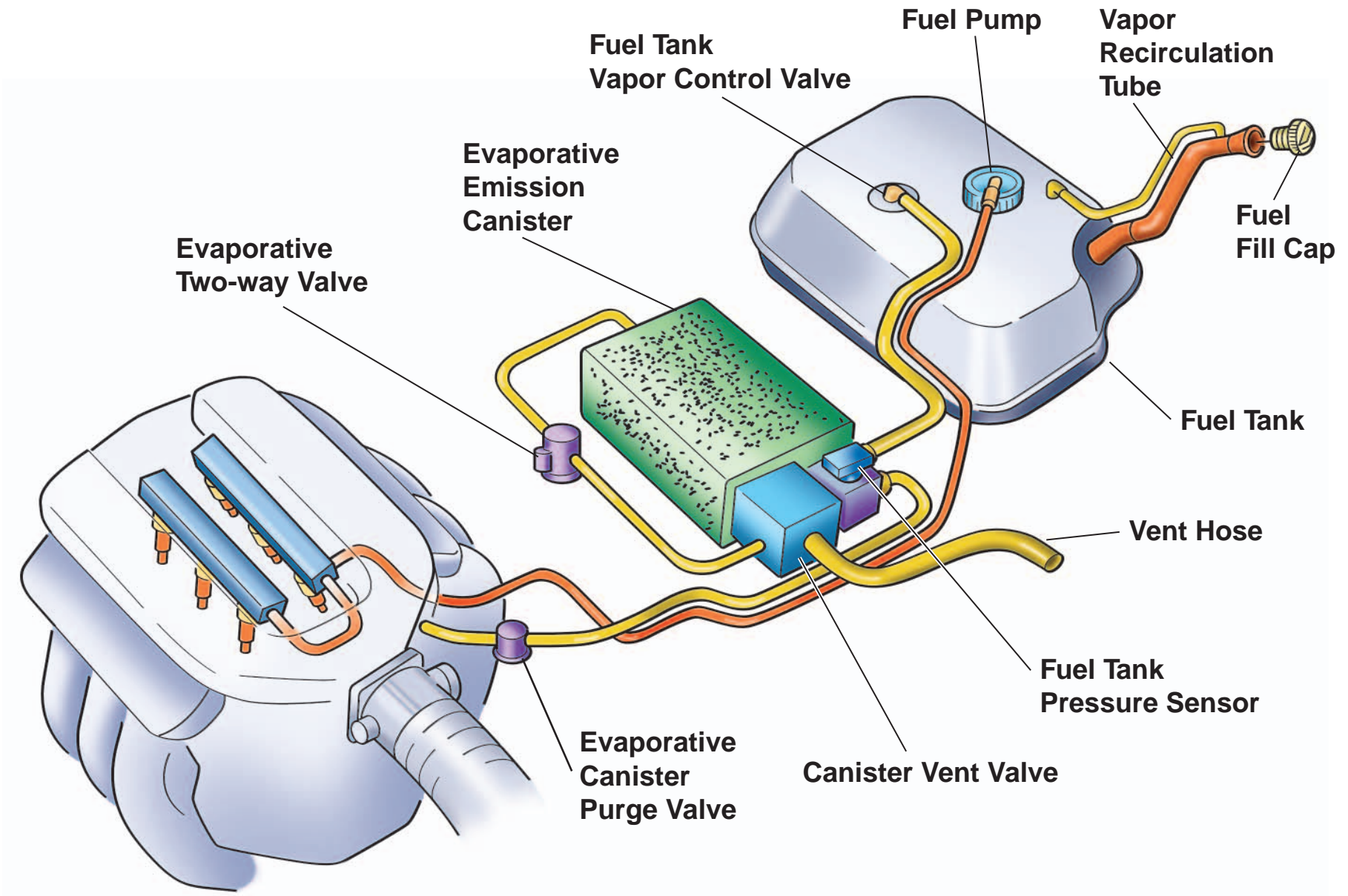
VTEC (Variable Timing Electronic Control) System



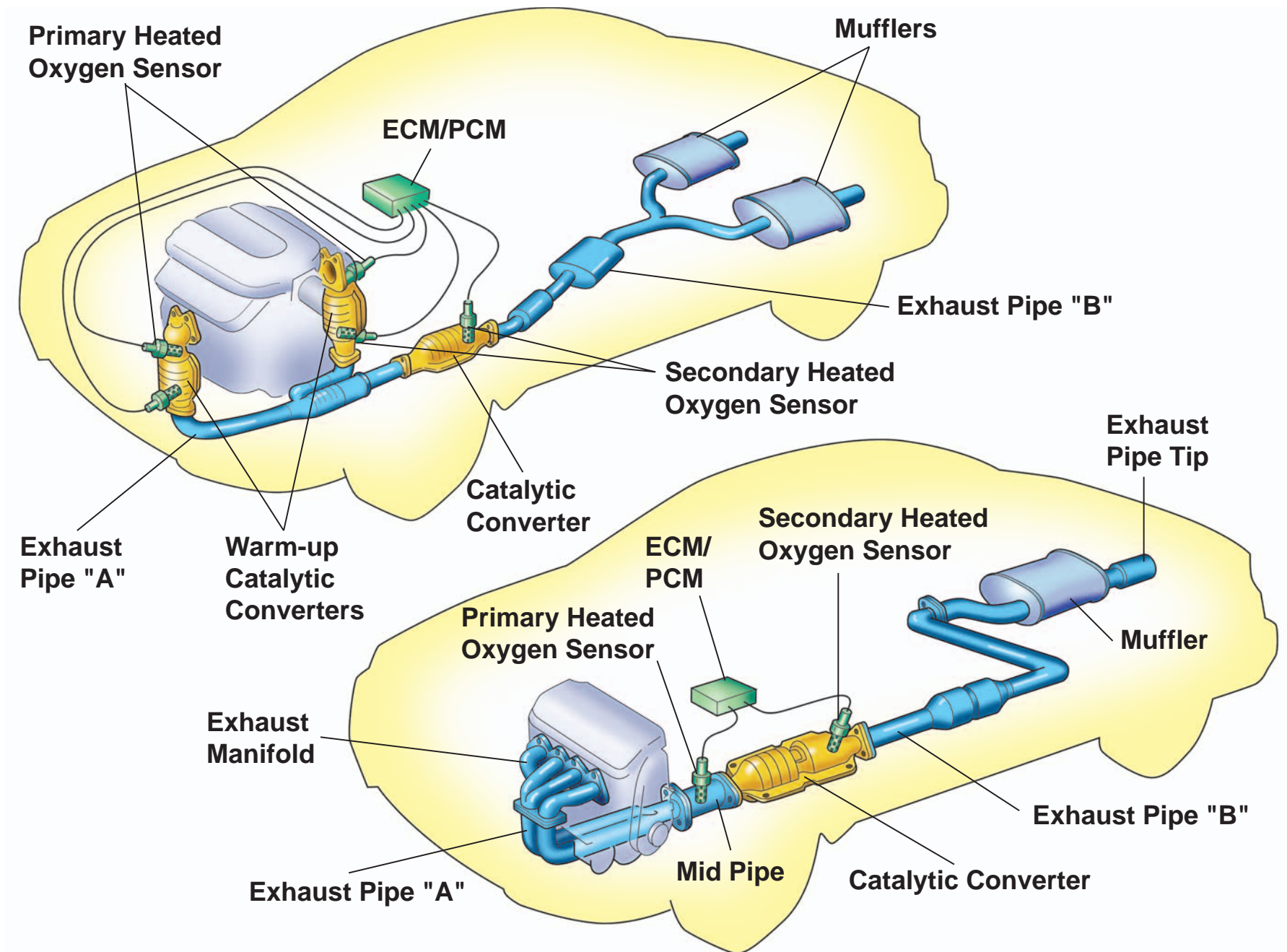
Fuel and Air Intake Systems



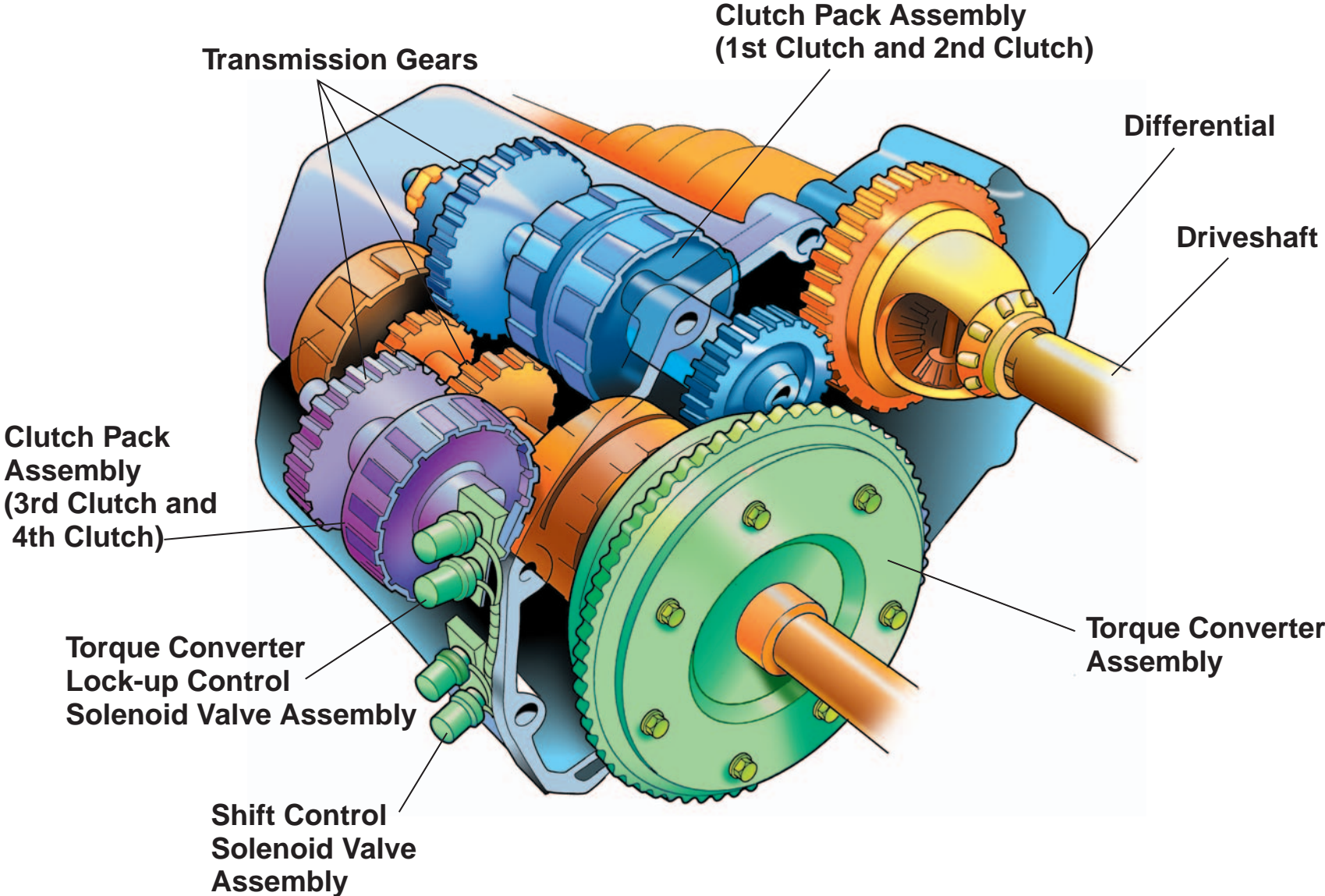
Evaporative Emissions System



Exhaust Systems

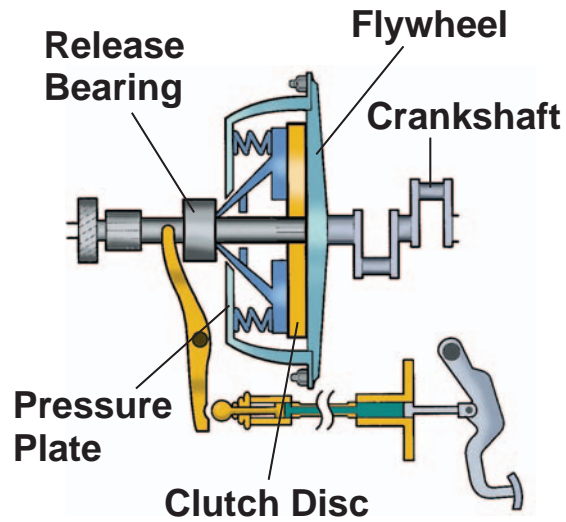


Automatic Transmission

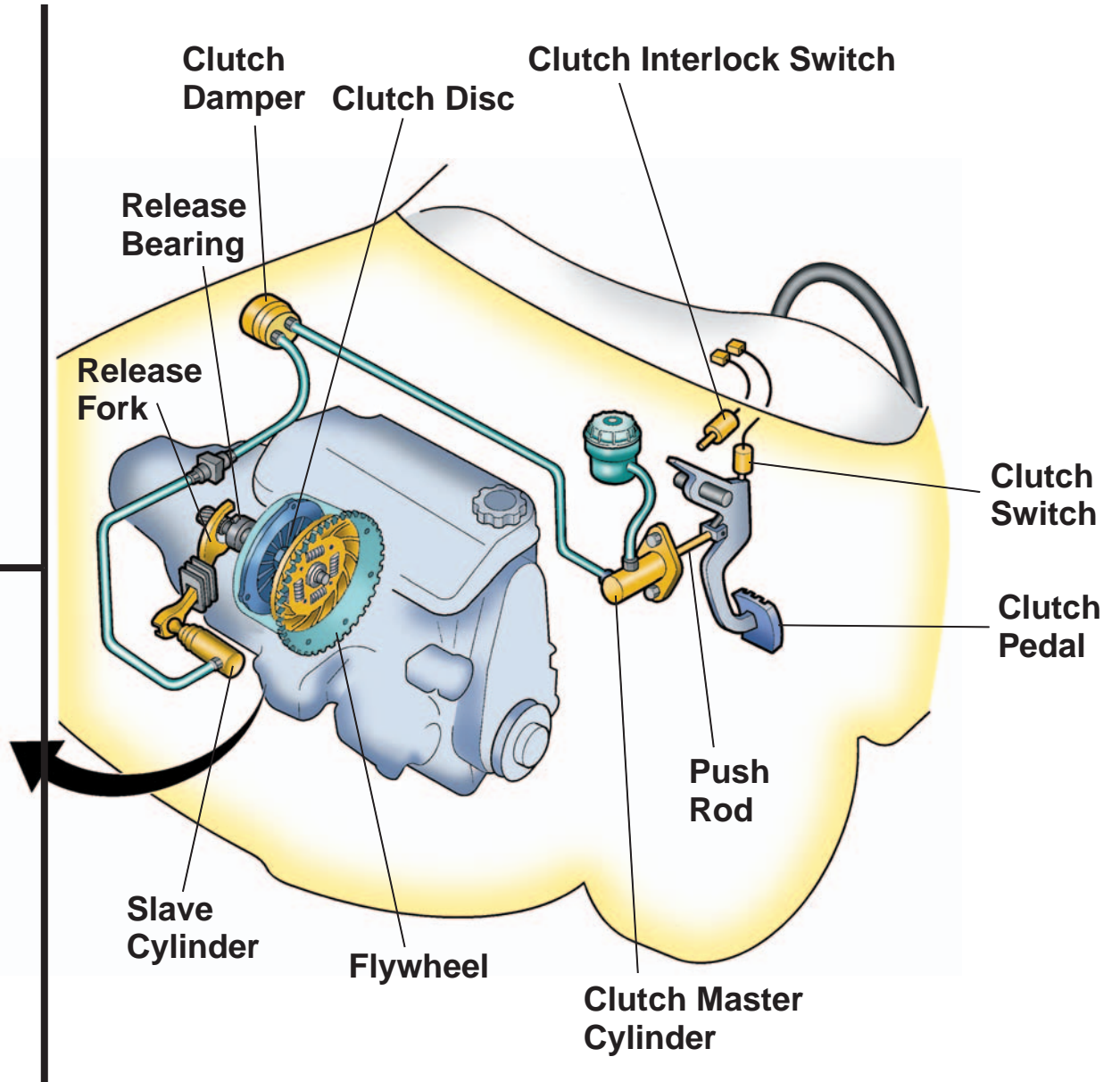
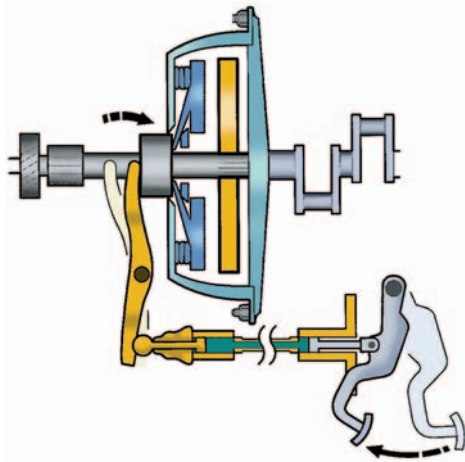


Clutch Assembly

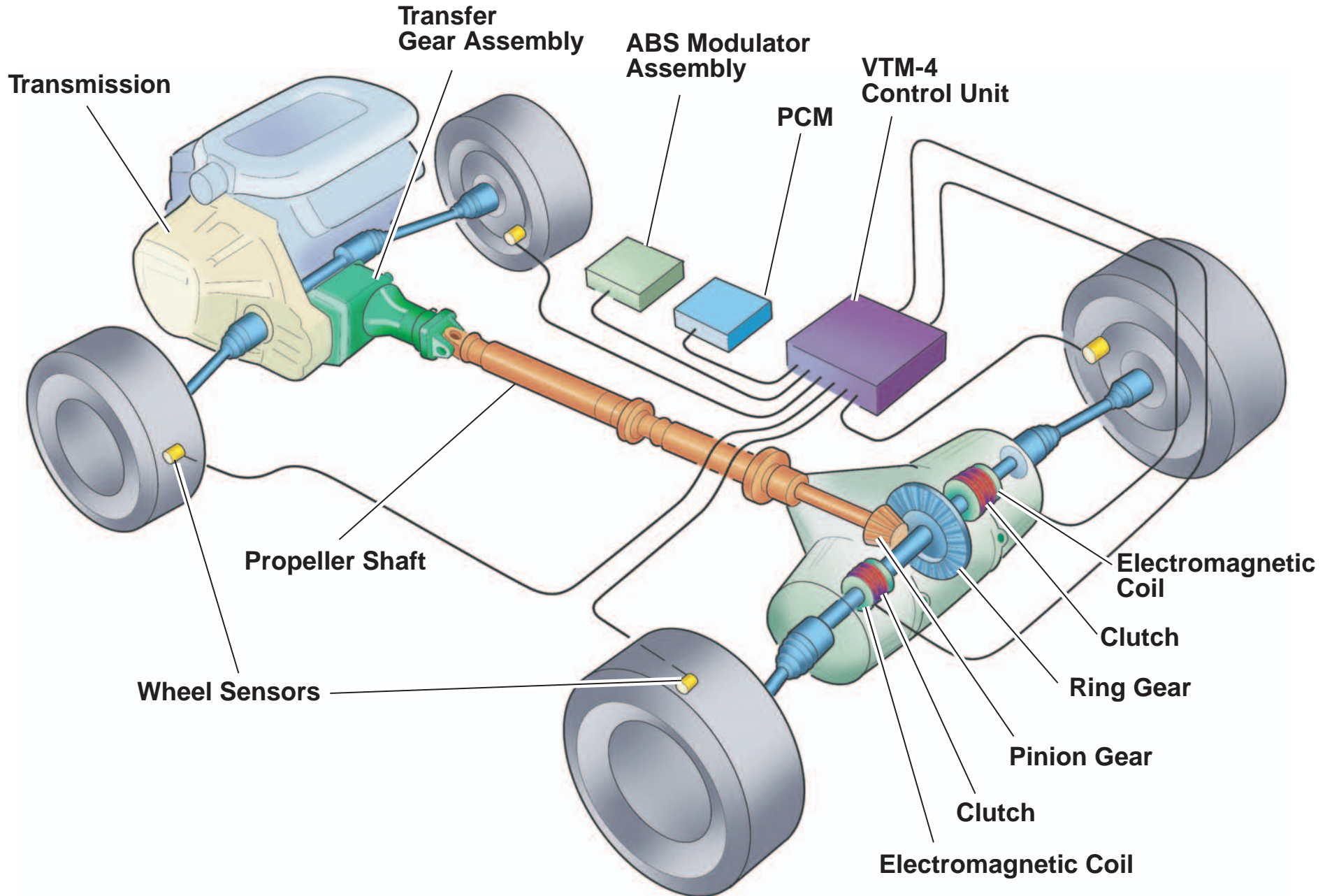
ENGAGED POSITION



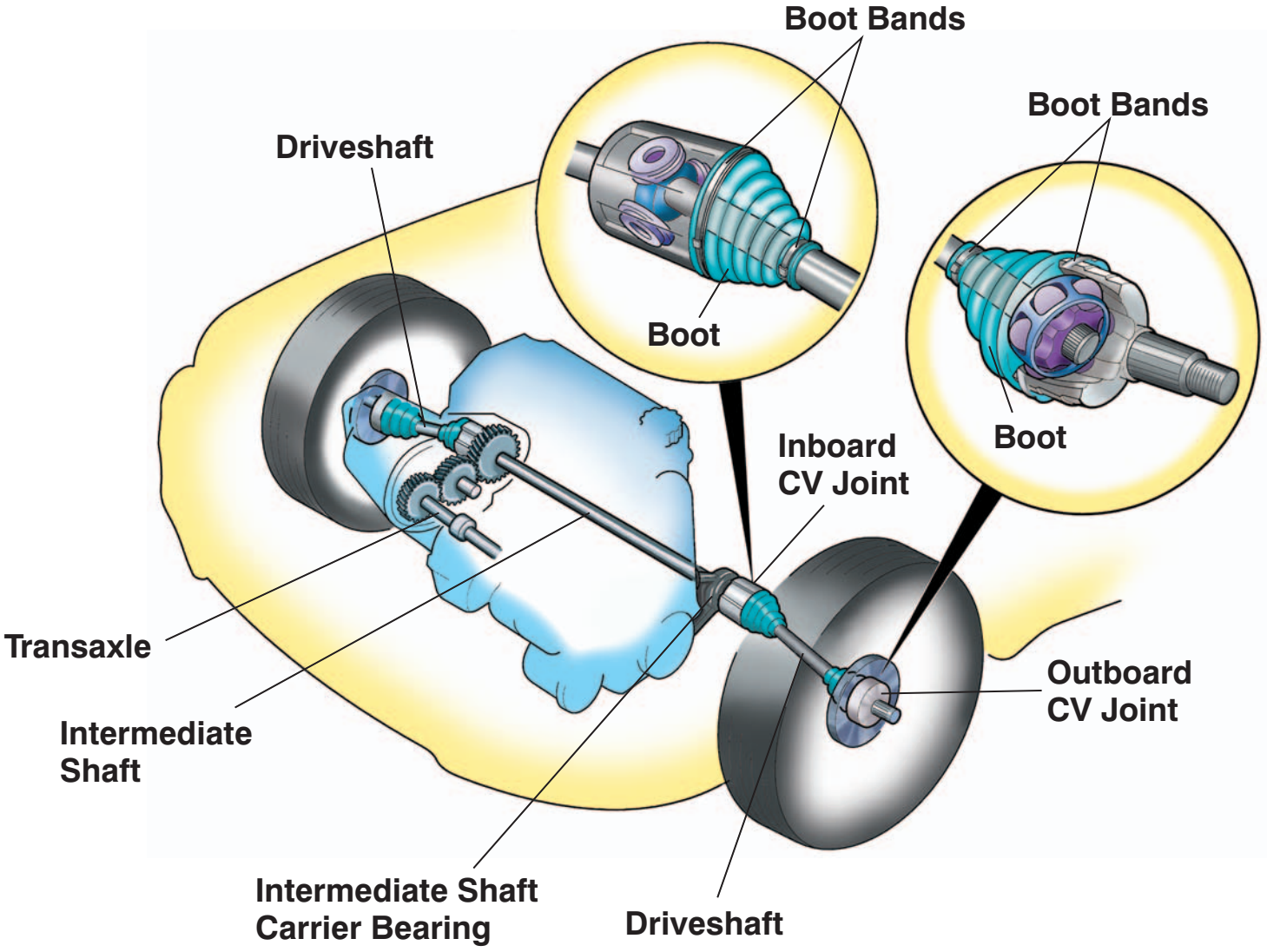
DISENGAGED POSITION



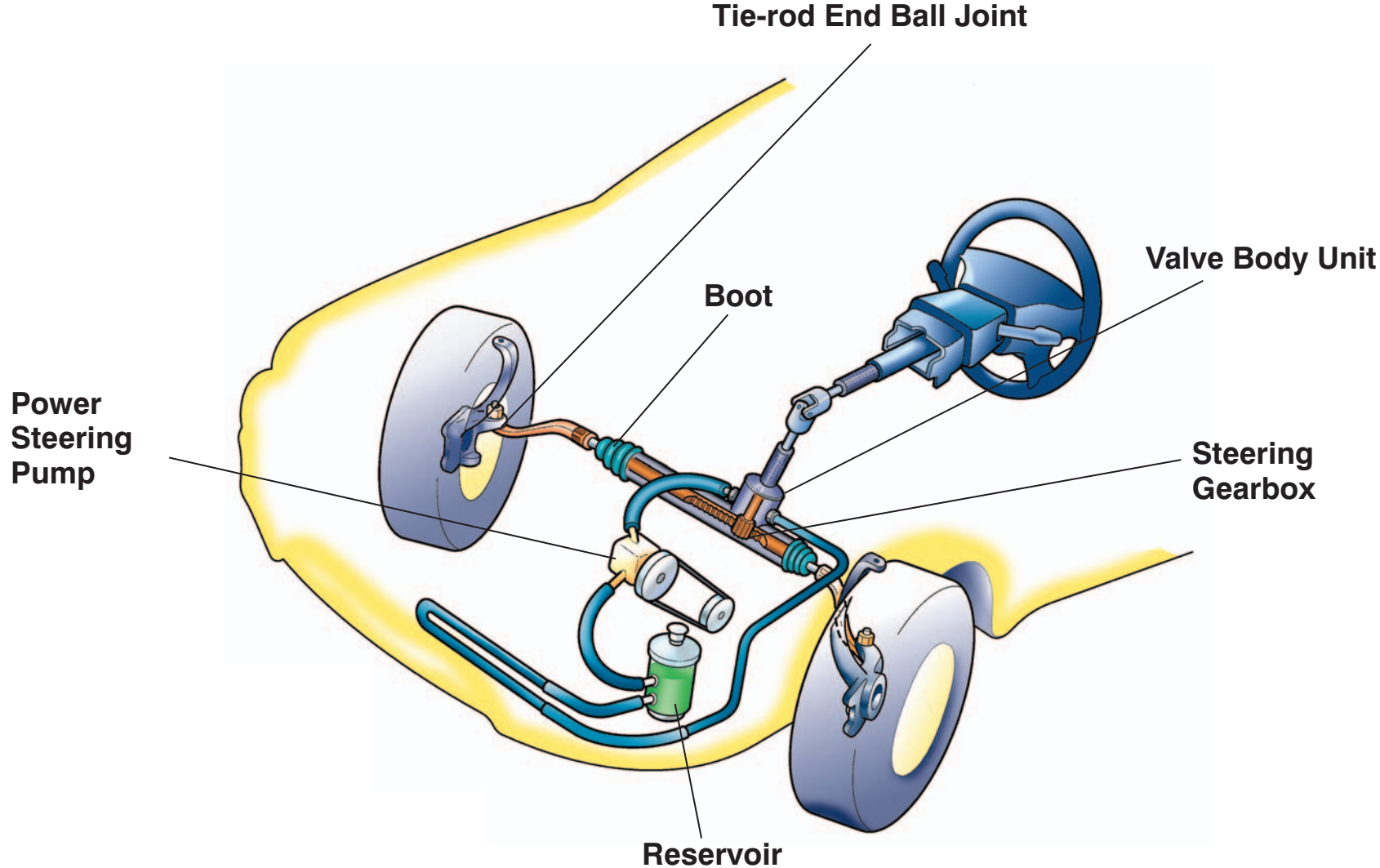
4-Wheel Drive System (VTM-4)



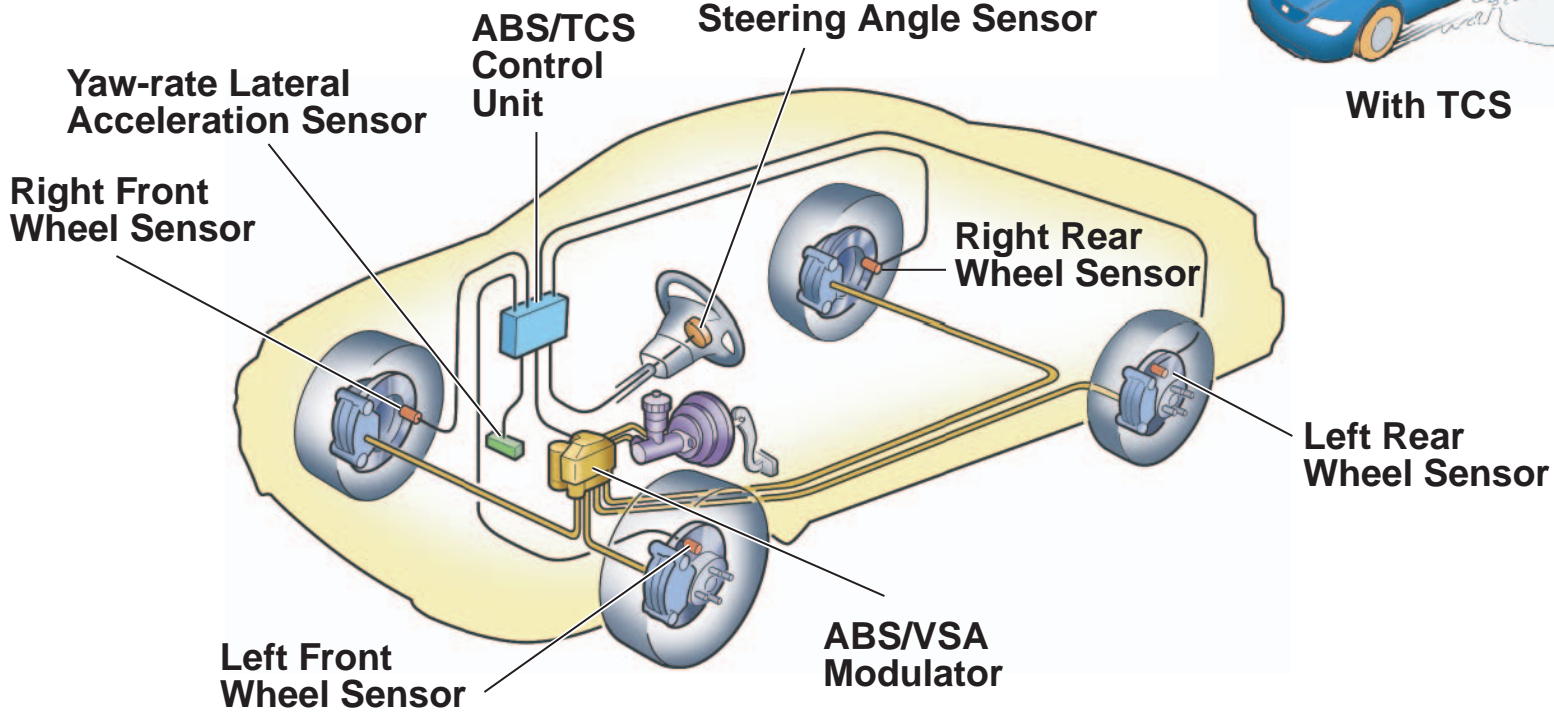
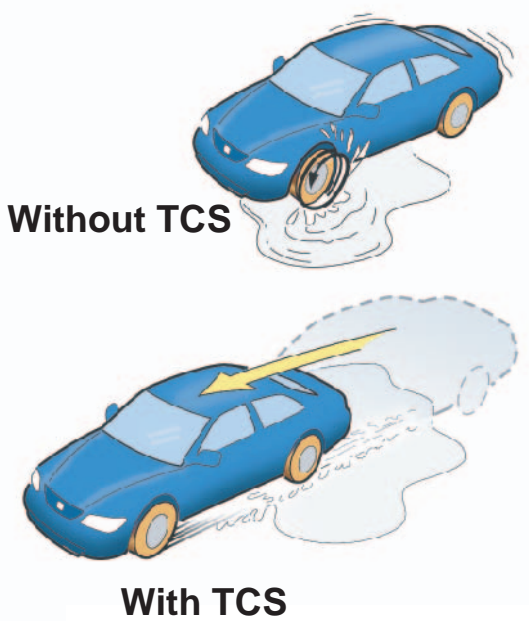
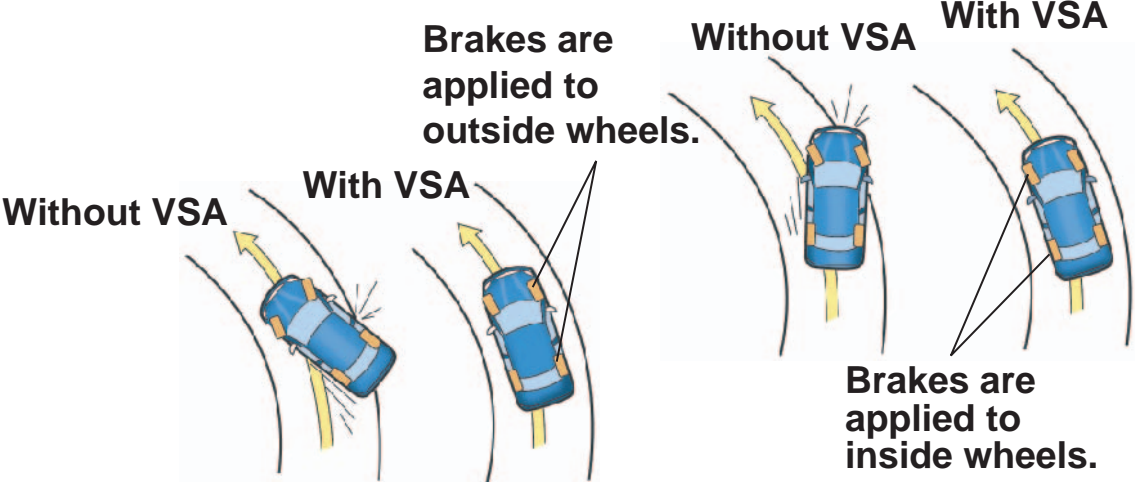
Driveshafts and CV (Constant Velocity) Joint Boots



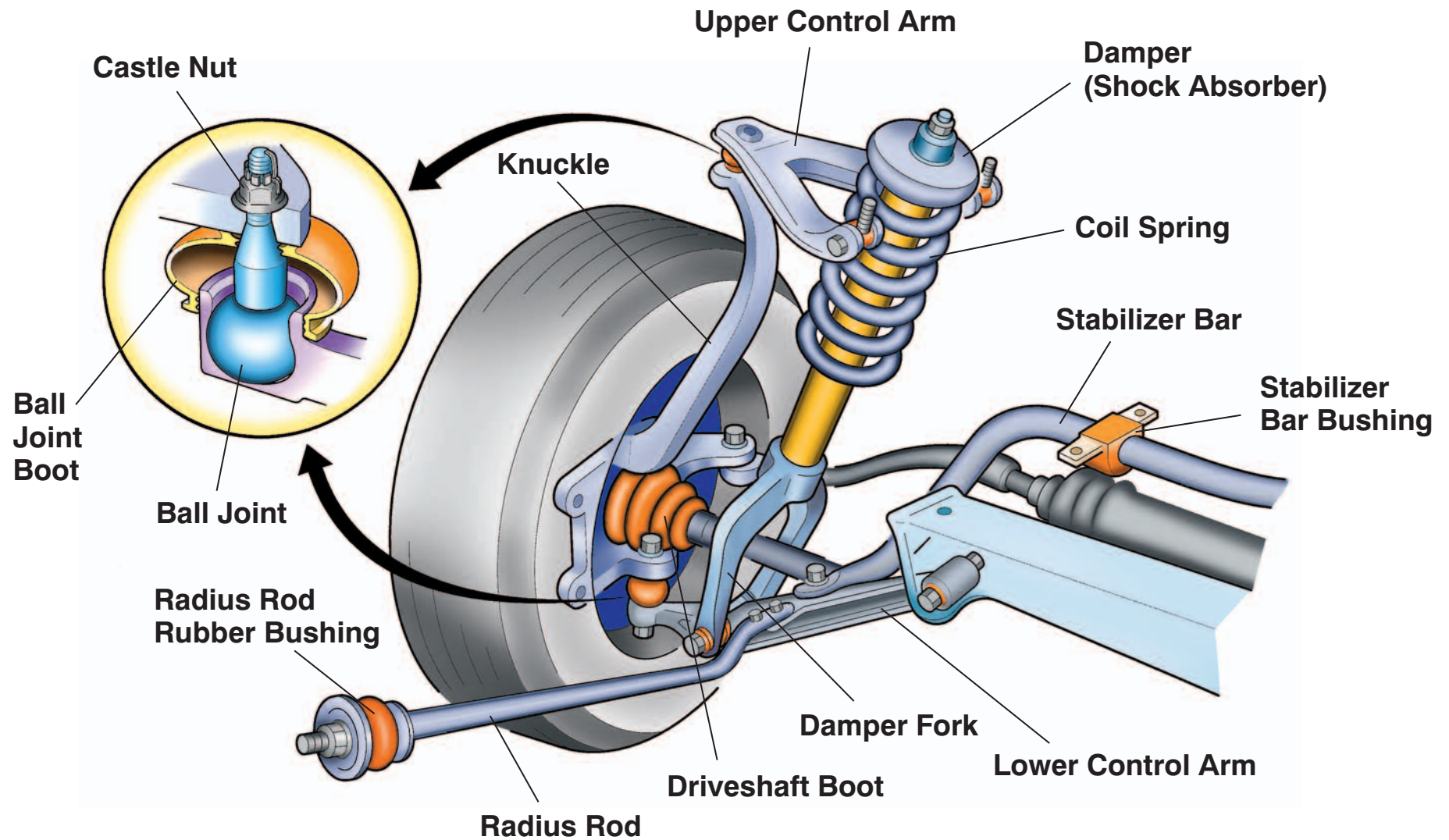
Rack and Pinion Steering



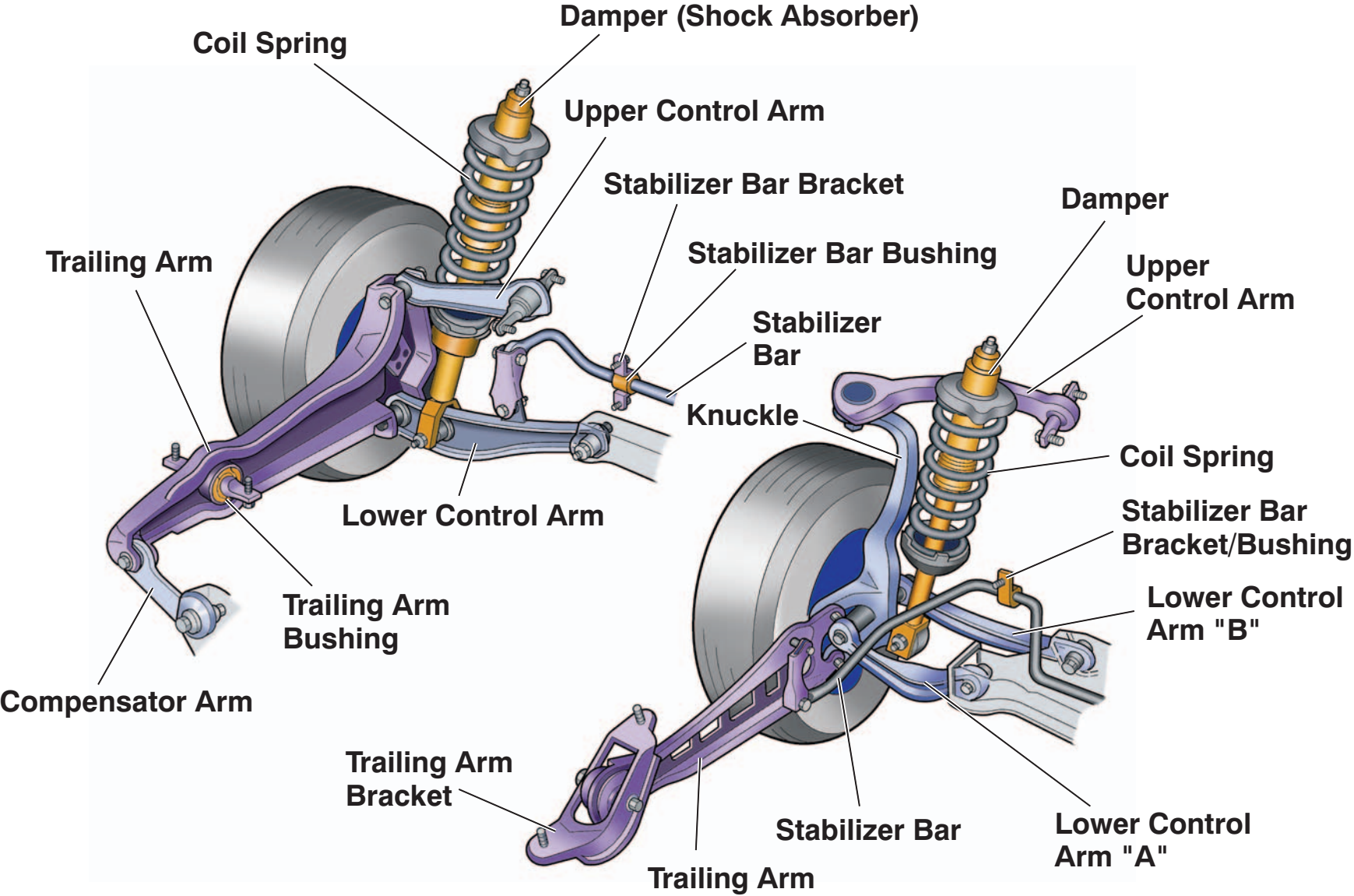
VSA (Vehicle Stability Assist) and TCS (Traction Control System)



Front Suspension



Rear Suspension



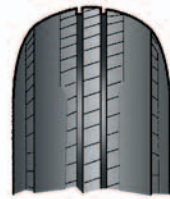
Tire Wear and Wheel Alignment



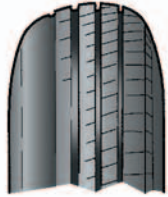
Wear Indicator



Overinflation



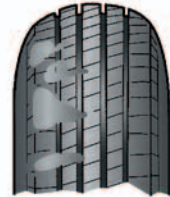
Underinflation



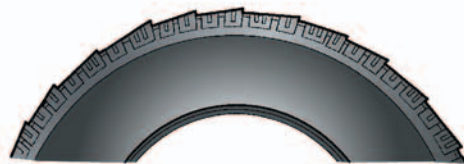
Feathered Wear
(excessive toe in or out)



Camber Wear



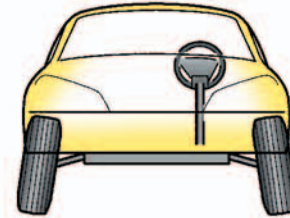
Spotty/Chopped Wear
(multiproblem)



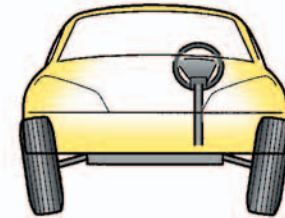
**Diagonal Wear/
Heel and Toe Wear**



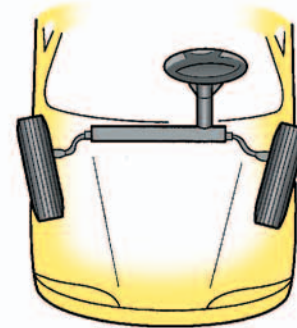
Local Wear



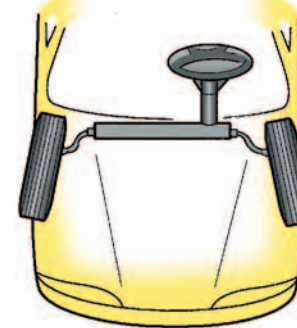
Negative Camber



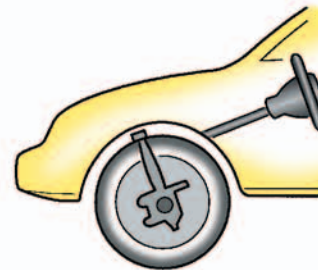
Positive Camber



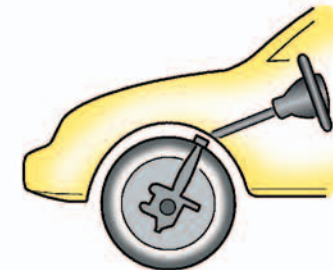
Toe In



Toe Out

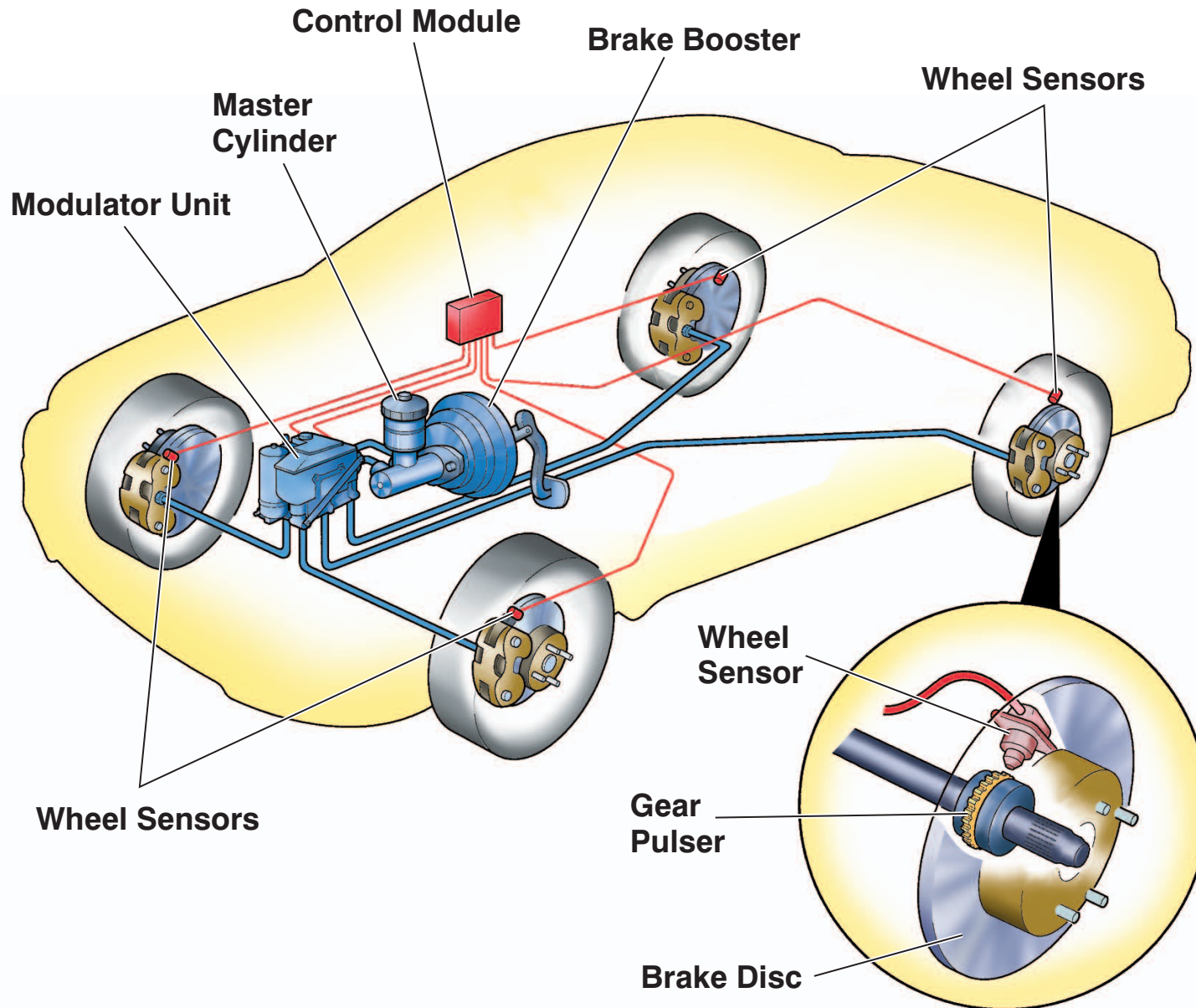


Negative Caster

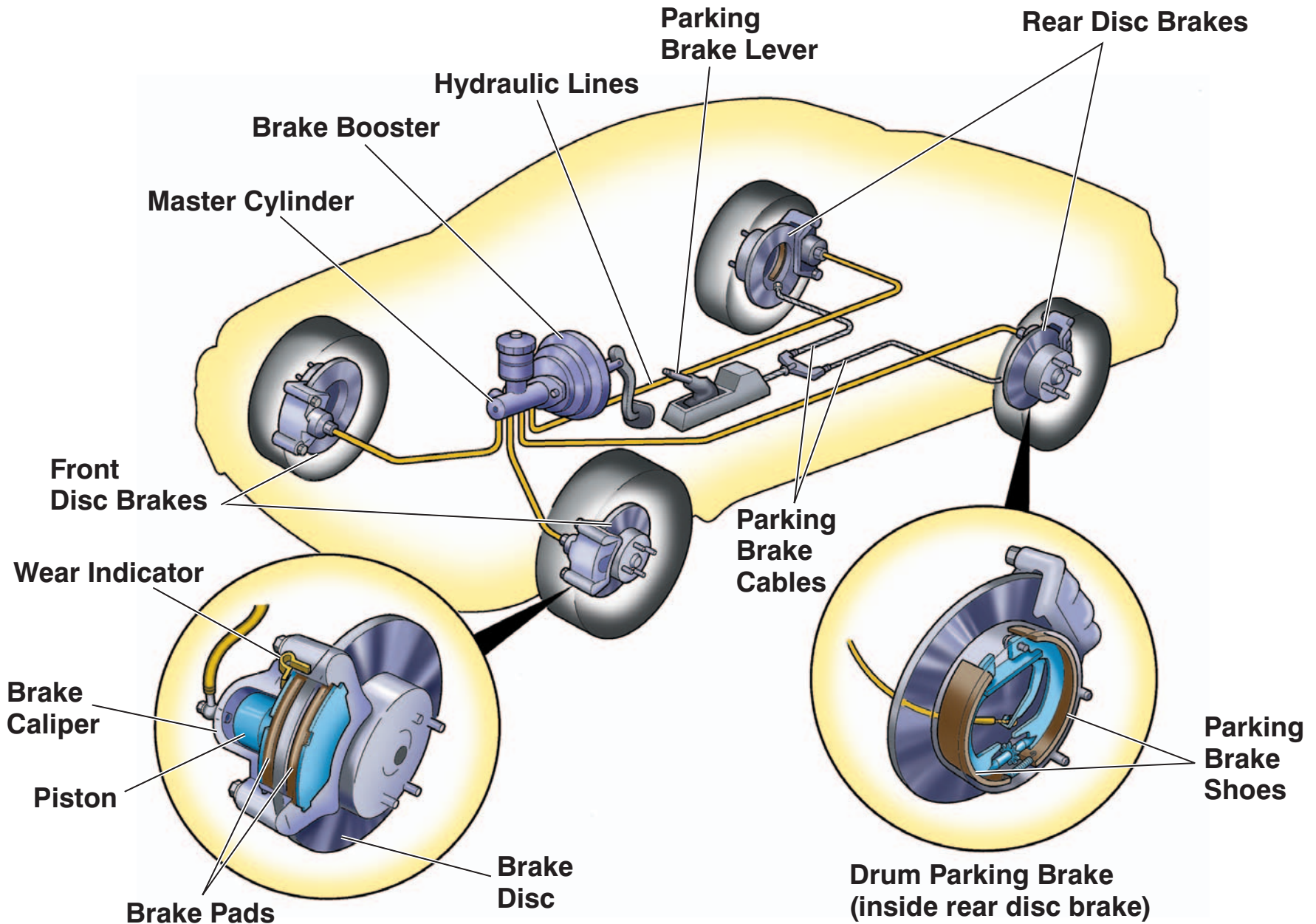


Positive Caster

ABS (Anti-lock Brake System)

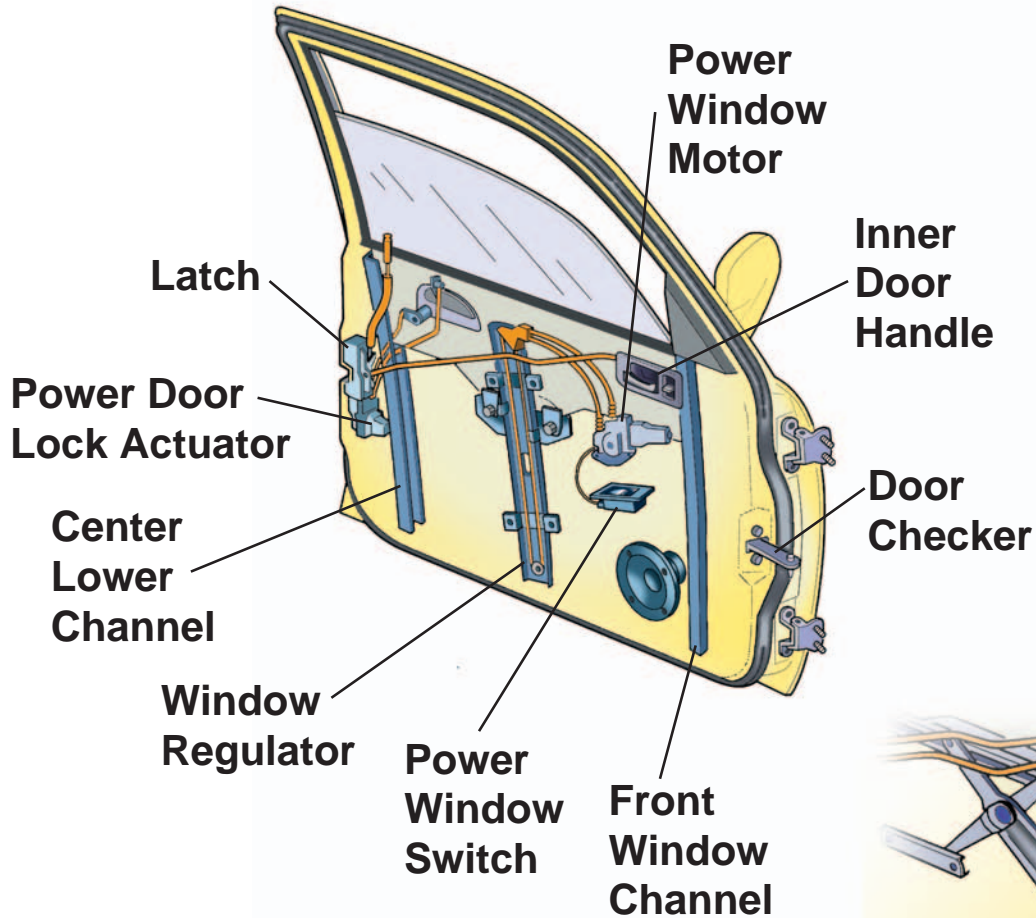


Conventional Brake System (non-ABS)

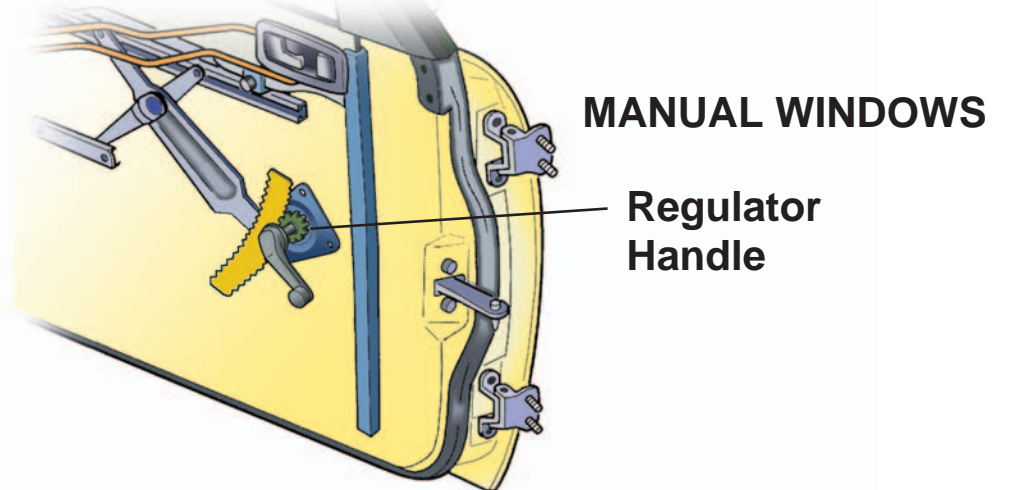
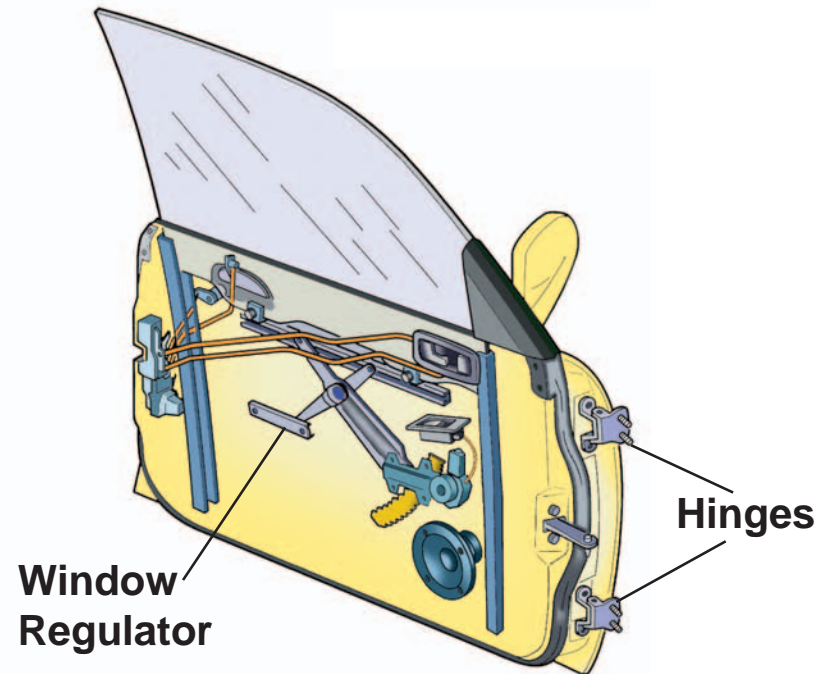


Doors and Windows

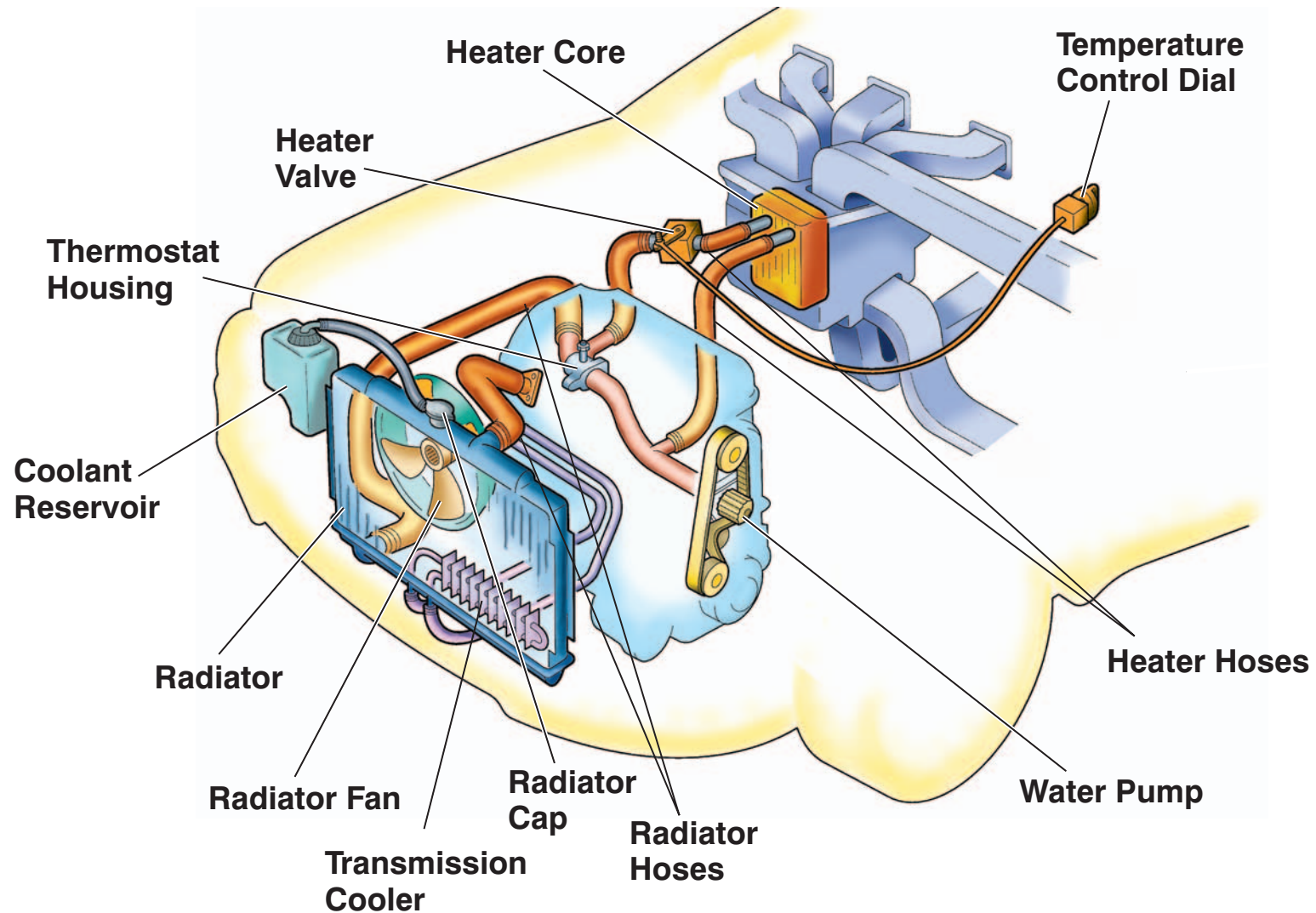
NEW STYLE POWER WINDOWS



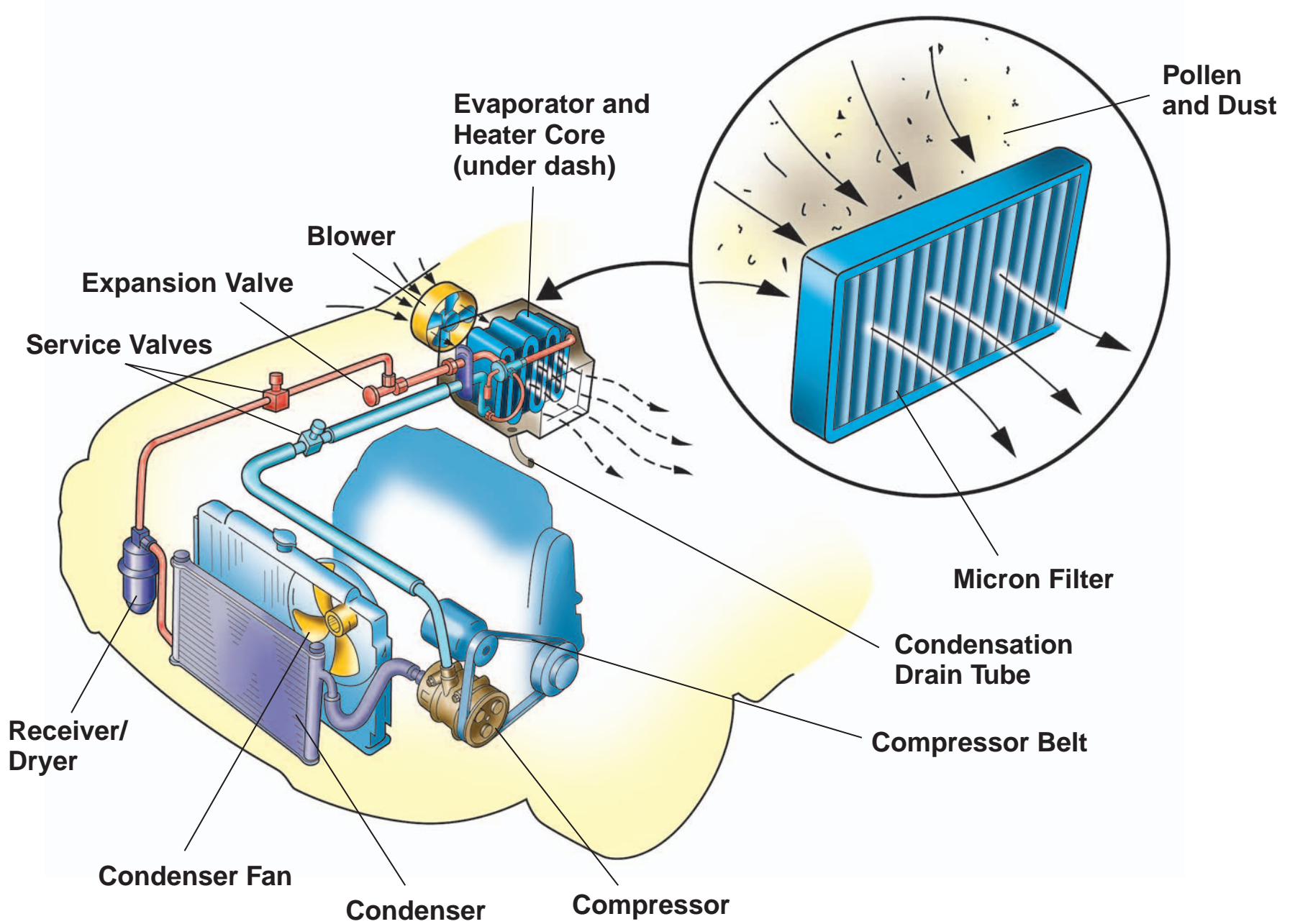
OLD STYLE POWER WINDOWS



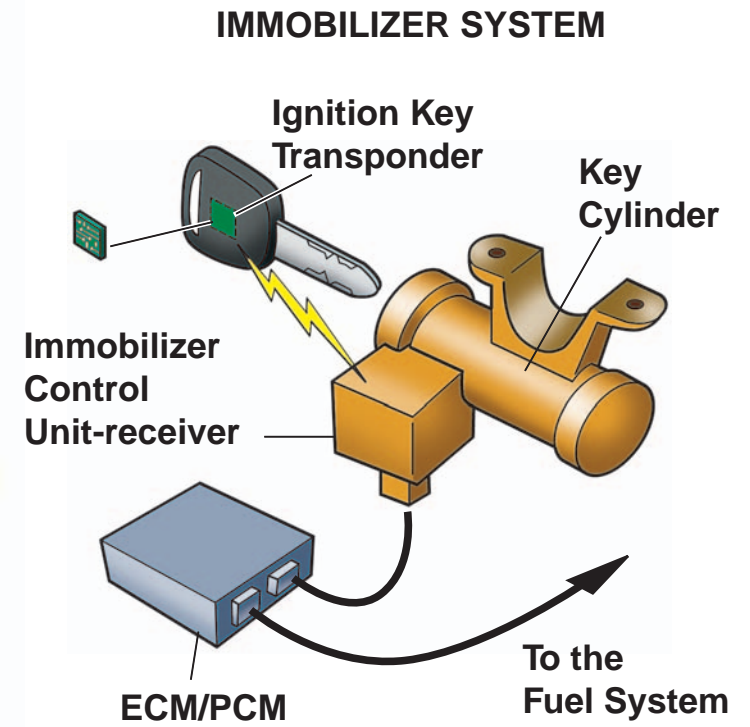
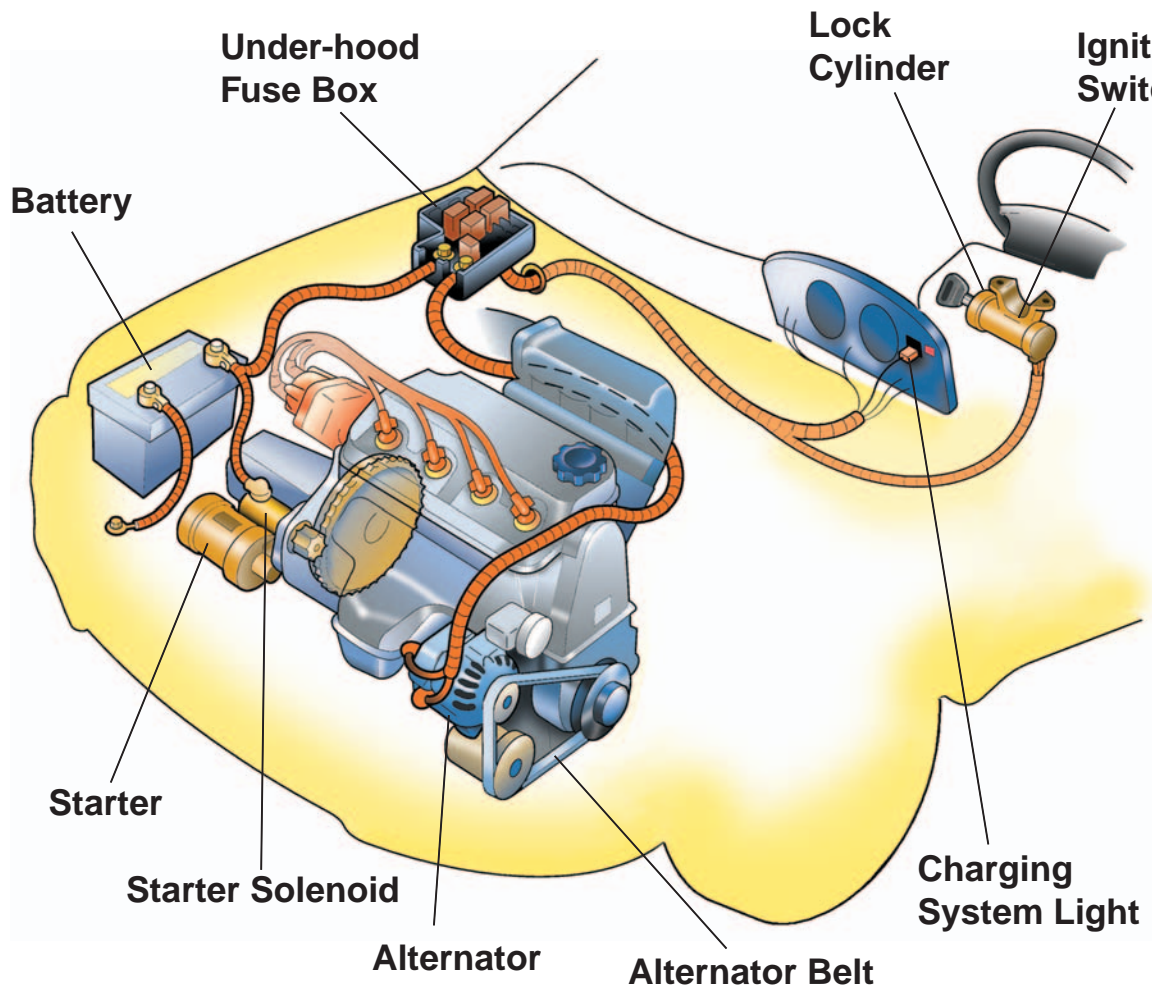
Engine Cooling and Vehicle Heating Systems



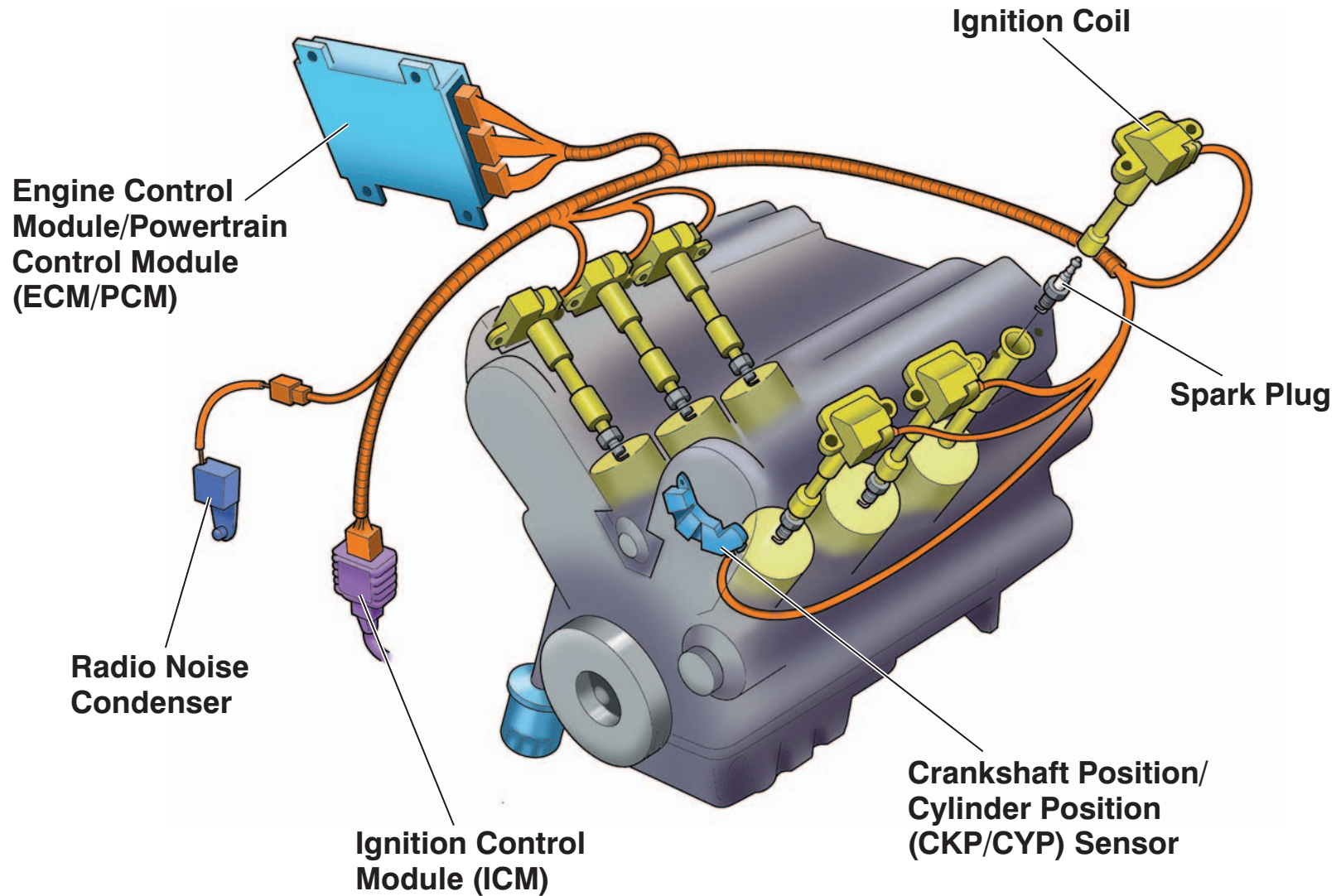
Air Conditioning System



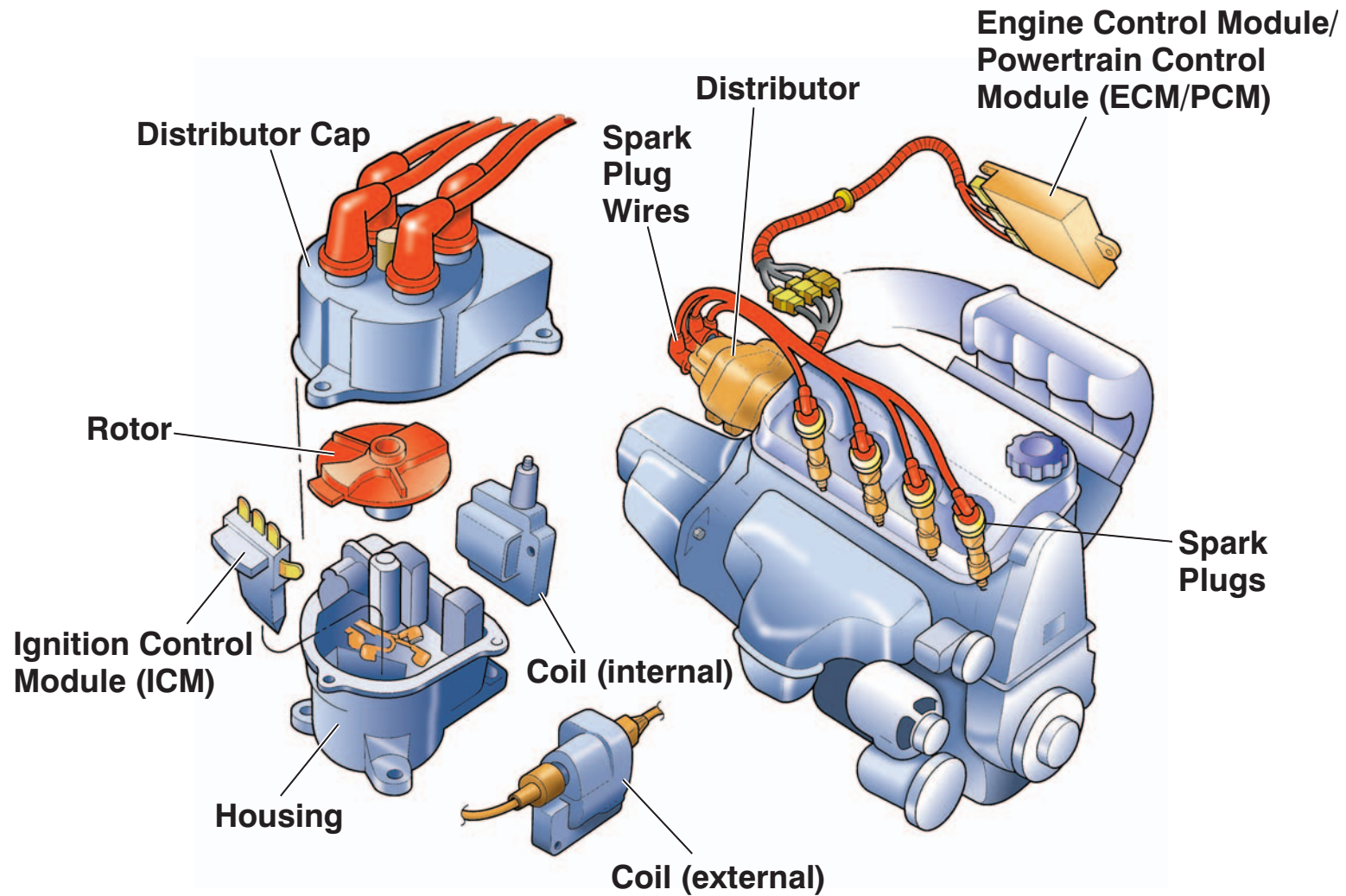
Starting and Charging System



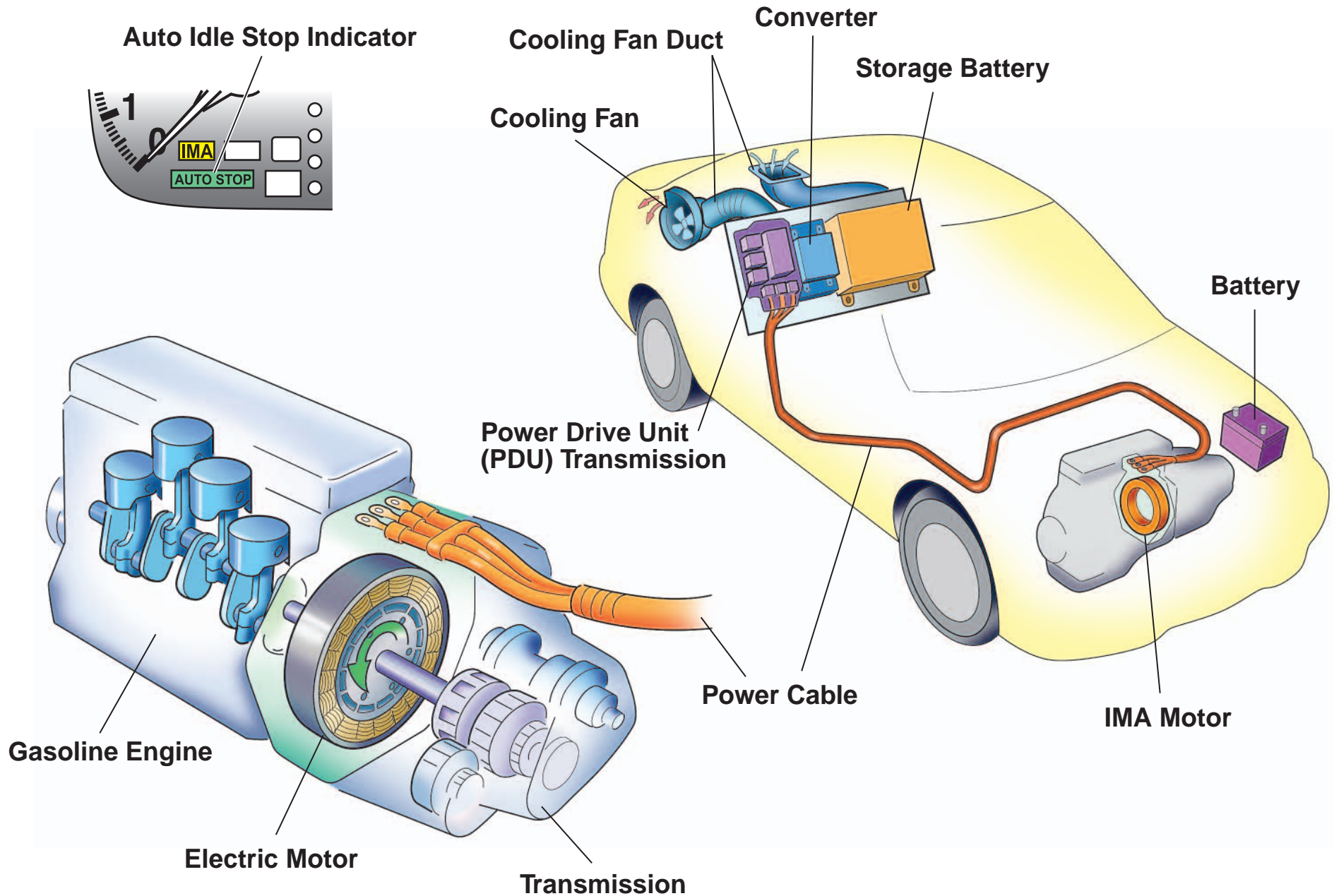
Direct Ignition System



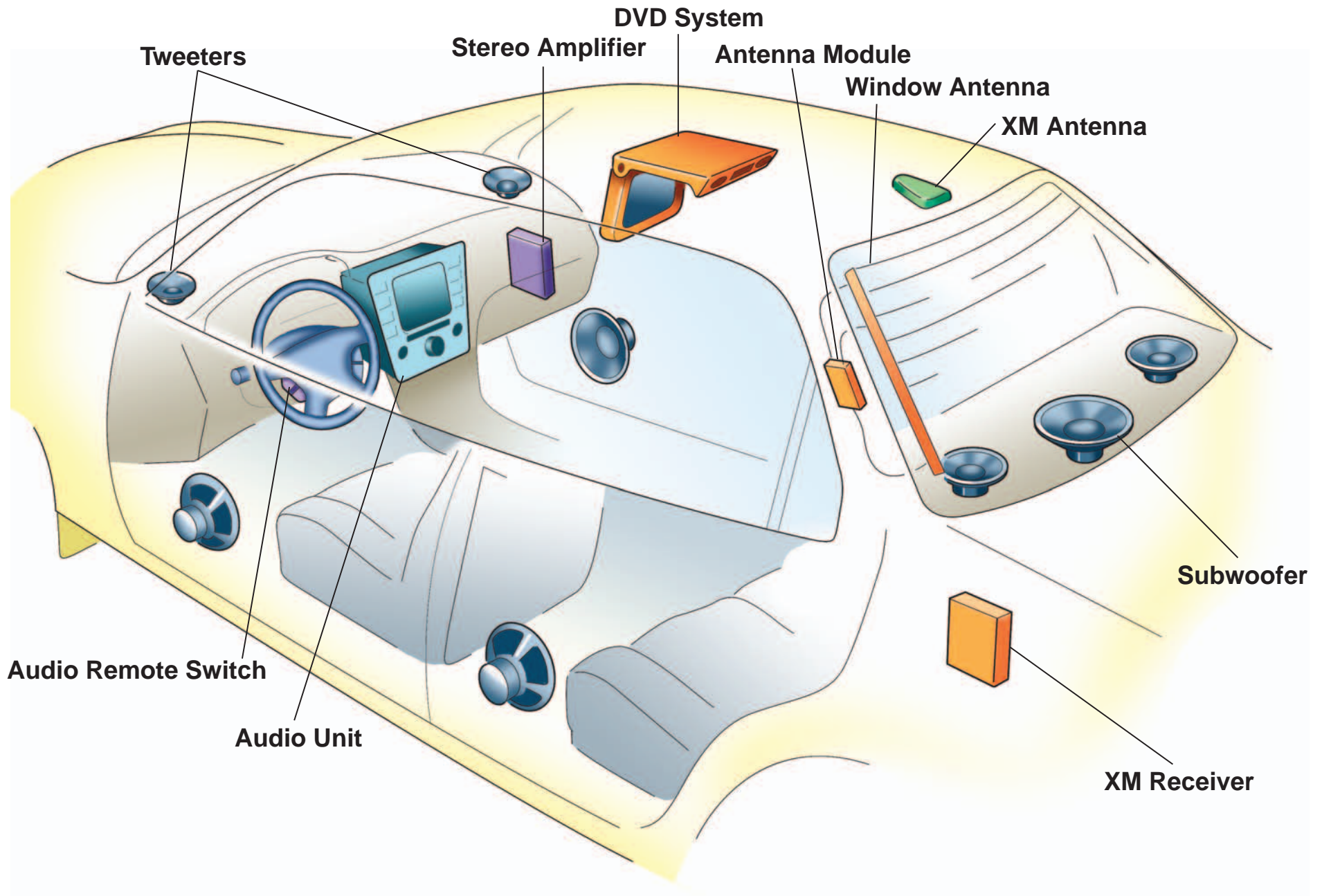
Distributor Ignition System



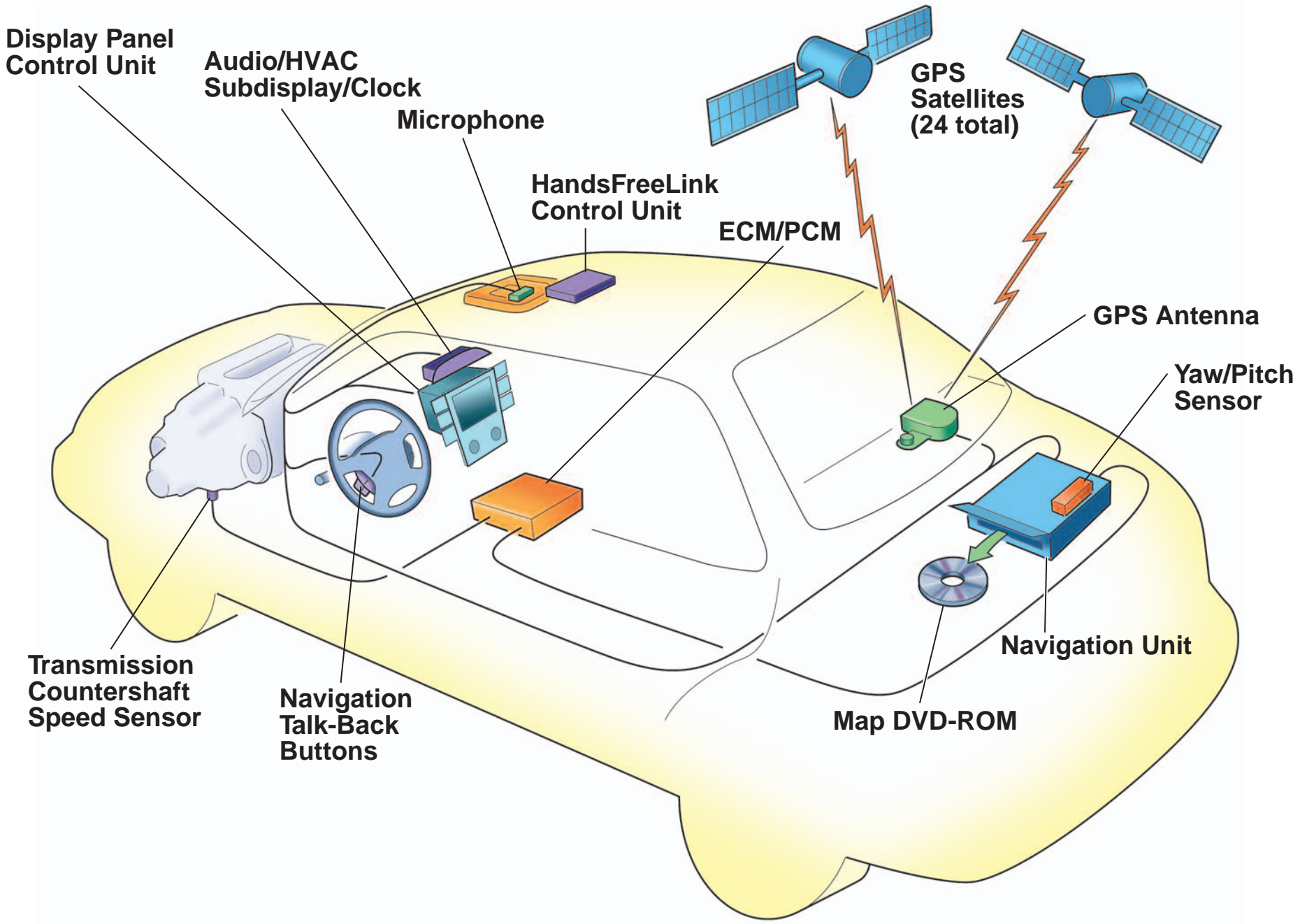
Hybrid IMA (Integrated Motor Assist) System



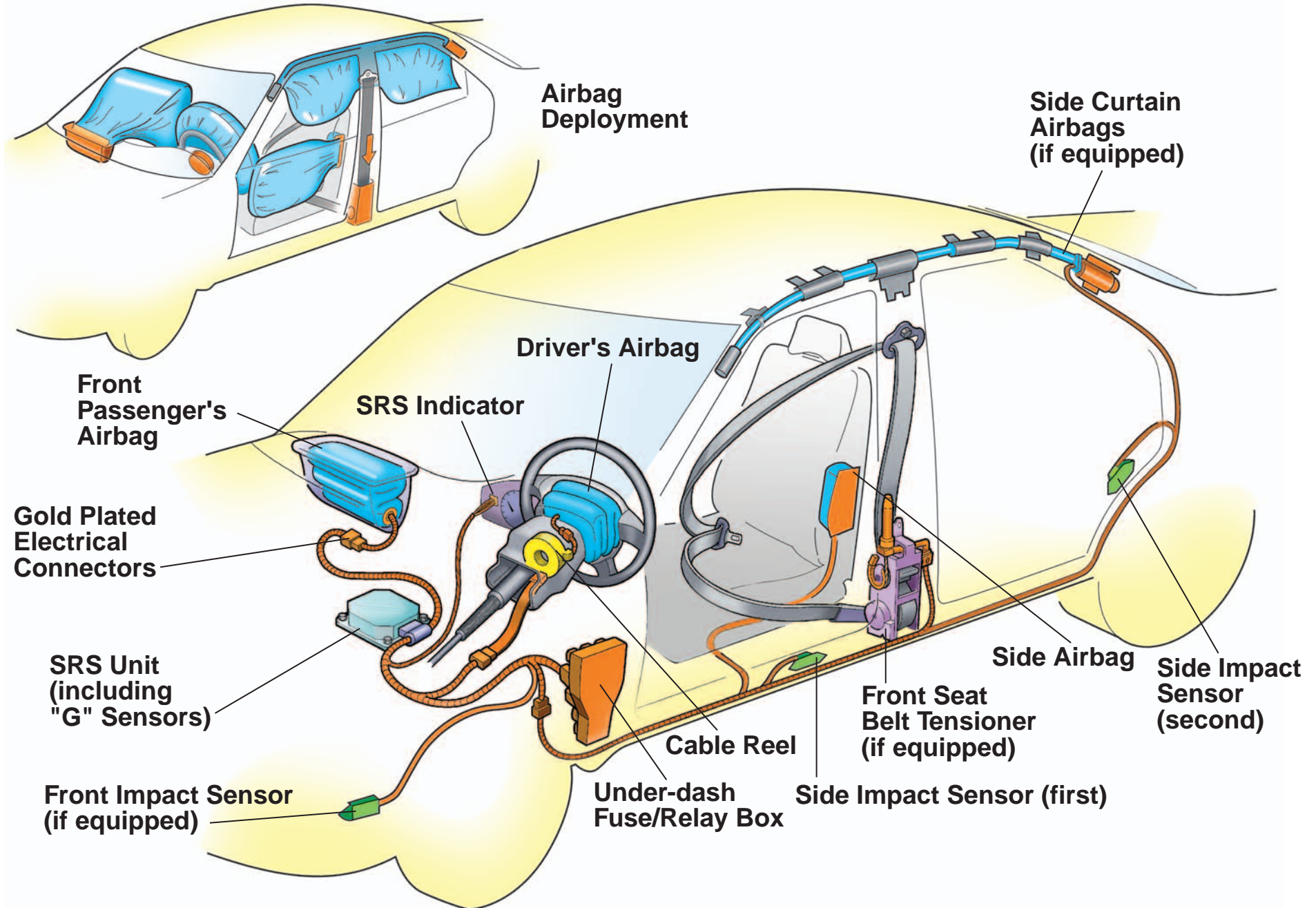
Audio and Entertainment Systems



Navigation System (with HandsFreeLink, if equipped)



SRS (Supplemental Restraint System)



Odyssey Power Sliding Doors

