

Jeep®

WRANGLER



2012



CAPABILITY WITHOUT COMPROMISE.

IT BEATS WITH A NEW HEART, YET REMAINS TRUE TO ITS TRAIL RATED® SOUL. FOR A SERIOUS EXPLORATION OF WORLDLY WILDS, THE LEGENDARY AND BEST-IN-CLASS⁽¹⁾ CAPABILITY OF THE 2012 JEEP® WRANGLER EXPANDS YOUR HORIZONS WITH THE NEW 285 HP PENTASTAR™ VARIABLE VALVE TIMING (VVT) V6 ENGINE. ITS UPDATED CABIN ADDS A NEW LEVEL OF REFINEMENT WITHOUT LOSING TOUCH WITH WHAT IT'S ALL ABOUT. COURAGE, ENDURANCE, AND FULL-ON GLORY TELL THE TALE OF THIS ICON – AN AUTHENTIC STORY OF ADVENTURE FOR MORE THAN 70 YEARS.





ADVENTURE FROM THE TOP DOWN.

A NEW HEART, THE SAME SOUL. THE 2012 WRANGLER'S NEW 3.6L PENTASTAR™ ENGINE WITH VARIABLE VALVE TIMING (VVT) ROARS TO LIFE POWERED BY A 40 PERCENT INCREASE IN HORSEPOWER, A 10 PERCENT IMPROVEMENT IN TORQUE, AND UP TO 15 PERCENT BETTER FUEL ECONOMY.* THIS EFFICIENT WORKHORSE LEADS WRANGLER'S POWERTRAIN ON ITS RENOWNED JOURNEY TO OPEN-AIR FREEDOM.



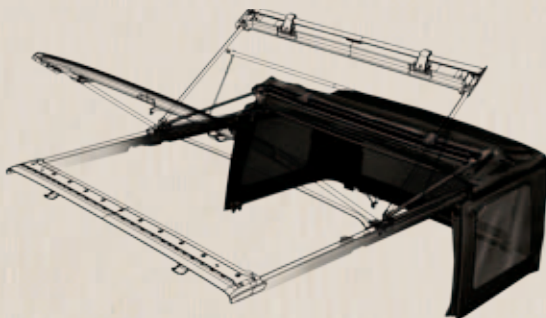
285 BEST-IN-CLASS⁽¹⁾
HORSEPOWER

260 LB-FT OF TORQUE

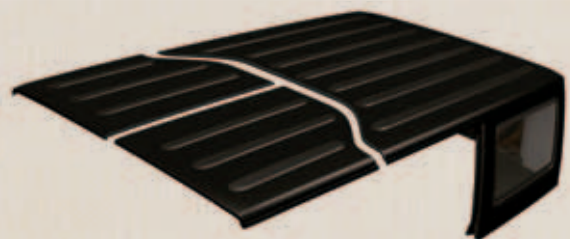
NEW 3.6L PENTASTAR VVT V6 ENGINE. With newly engineered refinement and power, the Pentastar engine answers the quest for more muscle to match Wrangler's legendary brawn. These updates and enhancements include a unique oil pan, an acoustic engine cover to reduce noise, optimized upper intake airflow for torque, and added equal-length downpipes to improve low- and mid-range torque response. Also unique are the front-end accessory drive and high-mounted rear-facing alternator for water fording.⁽³⁾ Its new pulse-width modulated 600-watt fan is 100 percent variable speed, not just high and low, plus it has a full face condenser for better A/C performance and a stand-alone transmission oil cooler.

NEW 5-SPEED AUTOMATIC TRANSMISSION. By increasing the number of speeds from four to five, this transmission offers more refined shifting and gear selection. It allows the engine to operate in a more efficient RPM range, which helps increase fuel economy. More speeds also enable the engine to remain in the torque curve, increasing acceleration and boasting a 25 percent improvement in 0-100 km/h (0-60 mph) time. Also, a lower first-gear ratio in the new automatic transmission gives the Wrangler more off-road capability via a lower overall crawl ratio.

SUNRIDER® SOFT TOP.⁽²⁾ The standard Sunrider soft top features a convenient cable release that quickly lets the sunshine in without having to fold back the entire top. Or, fold and tuck it all away. It's made of a three-ply fabric that helps deflect road sounds, absorb wind noise, and enhance insulation.



FREEDOM TOP® HARDTOP.⁽²⁾ This available three-piece modular hardtop allows sun-exposure control by separating into three easy-to-store pieces. The Freedom Top Carrier is an available Authentic Jeep® Accessory by Mopar®, allowing the panels to be conveniently carried on the spare tire.



*Compared to 3.8L V6 engine.



ARTICULATION



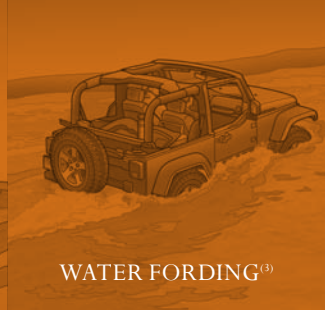
MANOEUVRABILITY



TRACTION



GROUND CLEARANCE



WATER FORDING⁽³⁾



CONFIDENCE TO GO ANYWHERE, DO ANYTHING™ IS BORN AND BRED IN EVERY JEEP® BRAND TRANSFER CASE. JEEP TRAIL RATED® VEHICLES STAND TALL AS THE ONLY 4x4s IN CANADA THAT PERFORM TO THESE RIGOROUS STANDARDS IN FIVE CATEGORIES, KEEPING YOU MOVING FORWARD, NO MATTER WHAT LIES AHEAD.

TRU-LOK® DIFFERENTIALS

Tru-Lok front and rear electronic-locking differentials balance speed between the left and right wheels, maintaining forward momentum for the ultimate in traction. An instrument panel-mounted rocker switch can lock either the rear or both axles. (Standard on Rubicon.)

HEAVY-DUTY SUSPENSION

Solid axles with locating arms, coil springs, track/stabilizer bars, front steering damper, and tunable monotube shock absorbers are firm at low speeds and more relaxed at higher speeds. (Standard on Sahara; a performance suspension is standard on Rubicon.)

FRONT SWAY BAR DISCONNECT

This system allows you to flip a switch to disengage the sway bar when driving under 29 km/h in 4WD-low (4LO) mode, permitting the front suspension to travel up to 25 percent farther. (Standard on Rubicon.)

TRANSFER CASE OPTIONS

Rock-Trac®, with its 4:1 low-gear ratio, allows Wrangler Rubicon to crawl at a low speed for greater control and increases the amount of torque available at the wheels. Command-Trac™ employs the NV241 GII transfer case, delivering smooth and quiet part-time shift-on-the-fly operation. (Standard on Sport and Sahara models.)

DANA® 44 HEAVY-DUTY AXLE

Durability and articulation come from heavy shafts, stiff housing, large pinion bearings, and above-centre pinion mountings. The above-centre mounting helps reduce driveshaft joint angles for smooth and quiet operation and adds ground clearance. (Rear Dana 44 standard on all models.) (Front Dana 44 standard on Rubicon.)

HOOKS AND PLATES

Every Wrangler is fortified with underbody armour that protects critical components with stamped steel skid plates for the fuel tank, transfer case, and automatic transmission oil pan. Front and rear tow hooks help when duty calls.

**BEST-IN-CLASS
GROUND CLEARANCE⁽¹⁾**

**BEST-IN-CLASS
APPROACH AND DEPARTURE ANGLES⁽¹⁾**

**BEST-IN-CLASS
MANOEUVRABILITY⁽¹⁾**



FOR TRUE INSPIRATION, LOOK WITHIN.

Wrangler Unlimited Sahara with Dark Saddle leather-faced interior.

FIRST-CLASS PRIDE. + Canada's only true off-road 4x4 convertible is finely wrought with classic design details. Satin Silver and chrome accents, automatic temperature control, and available heated leather-faced seats are embedded into Wrangler's premium soft-touch interior. The steering wheel places cruise, audio, and available Electronic Vehicle Information Centre (EVIC) controls right at your fingertips.

SOUND POSSIBILITIES. + The Media Centre 130 radio with an MP3 auxiliary input jack and six-speaker audio system is standard. There are two tweeters and four 6.5-inch speakers (two in the overhead sound bar). A premium sound system including six ∞Infinity® speakers and an 8-inch subwoofer with a 368-watt amplifier is available. Add to your connectivity with two additional Media Centre radios. The Media Centre 430N radio gives you a 6.5-inch touch-screen, Garmin® GPS navigation,⁽⁴⁾ a USB port, and SIRIUS® Satellite Radio⁽⁵⁾ with one-year subscription. The more robust Media Centre 730N radio includes all the features of the 430N, plus enhanced GPS navigation,⁽⁴⁾ Uconnect™ with Voice Command⁽⁶⁾ that lets you use your voice to control the phone, radio, navigation, and music, Bluetooth® streaming audio, iPod® connectivity, and steering wheel-mounted audio controls (on Sahara and Rubicon).

REAR CARGO MAT AND STORAGE BIN. + A reversible cargo mat protects your carpet, while a storage bin beneath Wrangler's rear floor helps keep valuables secure and out of sight. The lift-out tray provides convenient storage for doors and hardtop bolts.



Properly secure all cargo.

INTERIOR

5



PEACE OF MIND TAKES YOU AND YOURS FAR. YOU'LL FEEL THE STRENGTH OF THE JEEP® WRANGLER'S REINFORCED STRUCTURE, SHELTERED WITHIN AN ENVIRONMENT THAT PERFORMS HEROICALLY IN ALL DRIVING CONDITIONS. GO BOLDLY FORTH, EMPOWERED WITH THE CONFIDENCE ONLY A LEGENDARY JEEP WRANGLER CAN OFFER.

ELECTRONIC STABILITY CONTROL (ESC).⁵⁷

Standard on all Jeep Wranglers, this advanced system is designed to assist drivers in maintaining control of their vehicle at all times. It utilizes hydraulic brake assist, traction control, Electronic Roll Mitigation (ERM), and available Trailer Sway Control (TSC) to constantly monitor driver input against the vehicle's actual course. If needed, ESC automatically brakes and/or reduces engine torque, while ERM estimates the potential for wheel lift, reducing engine power and applying brakes if needed. TSC, packaged with the Trailer Tow Group, detects "sway" unique to trailering and engages the brakes to slow the vehicle, increasing brake force to one side of the vehicle to help counteract the sway from the trailer. ESC has three modes: Full-On, Partial-On (shuts off traction control), and Full-Off (ideal for off-road driving). Standard.

HEATED POWER EXTERIOR MIRRORS.

Melt snow and ice off your sideview mirrors as you warm up your interior and keep your mirrors free of ice as you drive. Available.

ADVANCED MULTISTAGE FRONT AIR BAGS.⁶⁸ These standard air bags provide nearly instantaneous occupant protection by matching air bag output to crash severity. Standard.

ENHANCED ACCIDENT RESPONSE SYSTEM (EARS). This system makes it easier for emergency personnel to see and reach occupants in the event of an accident by turning on interior lighting, flashing hazard lamps, and unlocking doors after air bag deployment. It also shuts off the flow of fuel to the engine. Standard.

SUPPLEMENTAL FRONT-SEAT SIDE AIR BAGS.⁶⁹ These deploy from the outboard side of each front seat to enhance protection of the driver and front passenger in certain impacts. Each side air bag has its own sensor to trigger the air bag on the side where the impact occurs. Available.

SENTRY KEY® ENGINE IMMOBILIZER
A unique embedded key code matched only to your vehicle helps keep your Wrangler safely where it belongs. Standard.

HILL START ASSIST (HSA) AND HILL DESCENT CONTROL (HDC). HSA works to prevent Wrangler from rolling when starting on an up- or downhill gradient. It holds the vehicle stationary for two seconds after the driver's foot is removed from the brake pedal, allowing time to apply the throttle. HDC is packaged with the available 5-speed automatic transmission and diligently works to help Wrangler navigate steep declines at a steady and consistent speed. Standard.

SPORT BAR. High-strength steel is integrated into the B-pillar that runs into the floor, helping to improve side-impact performance and vehicle stiffness. Standard.

MID-MOUNTED FUEL TANK. The wide-spaced frame rails cradle the fuel tank between the wheels for added protection. Features a robust 2.5-mm skid plate for safer off-road driving. Standard.

ENERGY-ABSORBING FRONT RAIL EXTENSIONS. Collapsible, hydroformed front rail tips offer low-speed protection and can be serviced after impact events of up to 13 km/h. Standard.





RUBICON

7
RUBICON

VOTED "BEST 4x4 OF THE DECADE" BY FOURWHEELER MAGAZINE, RUBICON IS A FACTORY-BUILT WARRIOR BORN WITH TRU-LOK® ELECTRONICALLY LOCKING DIFFERENTIALS, MUD TERRAIN TIRES, ROCK-TRAC® TRANSFER CASE, 4:1 LOW RANGE RATIO, AND ROCK RAILS. A CLASS-DOMINATING⁽¹⁾ 73.1:1 CRAWL RATIO WITH THE 6-SPEED MANUAL TRANSMISSION LETS YOU CRUISE UP THE ROCKS AT A CONTROLLED 0.8 KM/H, AIMING FOR PLACES OTHERS ONLY DREAM OF REACHING. THE PERFORMANCE-TUNED SUSPENSION, WITH GAS-CHARGED SHOCKS AND ELECTRONIC SWAY BAR DISCONNECT, HELPS STEADY THE CLIMB.



Wrangler Rubicon in Flame Red.



1



2



3



WHEN THE GOING MEETS TOUGH. + Muscular 32-inch BFGoodrich® Mud-Terrain Tires mounted on 17-inch Moab Wheels are standard fare on the Rubicon. Skid-plate protection helps the mighty Rubicon's Rock-Trac® transfer case gain trail-ready status. Rock rails work to protect Rubicon from damaging debris.

1 ADVENTURE-WORTHY INTERIOR. + Rubicon's cabin is worthy of a hero's journey, and the new, available Katzkin™ deluxe leather two-tone seats will definitely please the superheroes. A four-way position adjuster is standard on the driver's seat.

2 BEST-IN-CLASS WATER FORDING.⁽²⁾ + Go further without fear. Thanks to Rubicon's Trail Rated® water fording capabilities,⁽²⁾ you have permission to ford rivers, lakes, streams, and puddles of up to 76 cm (30 inches) in depth.

3 AVAILABLE BODY-COLOUR TOP AND FLARES. + Catch the eyes of the style-conscious by coordinating the colour of your three-piece modular Freedom Top® hardtop and fender flares to your exterior paint.



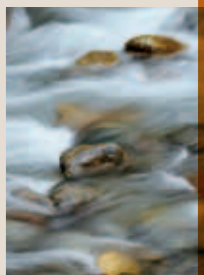
SAHARA



THE RIGHT MIX OF CAPABILITY, STYLE, AND COMFORT. SAHARA ARRIVES LOOKING THE PART WITH TUBULAR SIDE STEPS, BODY-COLOUR FENDER FLARES, BRIGHT BUMPER ACCENTS, AND AVAILABLE BODY-COLOUR FREEDOMTOP® HARDTOP. GAS-CHARGED SHOCKS GIVE MORE CUSHION WHEN PUSHING AHEAD. LIKE ALL WRANGLERS, SAHARA CAN BE GIVEN THE FULL OPEN-AIR TREATMENT BY REMOVING THE DOORS, THE TOP, AND EVEN FOLDING DOWN THE WINDSHIELD.⁽²⁾ NEW ENERGY-CONSERVING AUTOMATIC HEADLAMPS AND ATTENTION-GRABBING 18-INCH ALUMINUM WHEELS MAKE A STATEMENT AND ALWAYS COME STANDARD.



Wrangler Unlimited Sahara in Black Forest Green Pearl.



1 UCONNECT™ MEDIA CENTRE. + Sahara's standard Media Centre 130 radio pours out the sound with an available SIRIUS® Satellite Radio⁽⁵⁾ with one-year subscription and six standard ∞Infinity® speakers powered by a 368-watt amplifier. It's an easy upgrade to a Uconnect Media Centre 730N radio with 6.5-inch touch-screen and enhanced Garmin® GPS navigation⁽⁴⁾ that can help keep your location in check and your hands safely on the wheel with hands-free communication.⁽⁶⁾



2 TAKE MORE GEAR. + Enjoy open-air freedom with phones, cameras, and other cool stuff, knowing you can keep them safely stowed in the large locking centre console when you don't need them. Storage nets in all doors keep important items within easy reach. Hidden storage behind the rear seats is handy as well.



Properly secure all cargo.

3 CONVENIENT AND COMFORTABLE. + Relax while you enjoy Sahara's open-air freedom. Optional premium heated leather-faced seats accompany the standard bright interior accents, grab handles, air conditioning, power locks, windows, and 115V auxiliary power outlet.





SPORT

11
SPORT

WHICHEVER WRANGLER SPORT YOU CHOOSE, YOU'RE HANDED THE TORQUE TO GET UP AND OVER WITH THE NEW 3.6L PENTASTAR™ VVT V6 ENGINE MATCHED TO THE LEGENDARY COMMAND-TRAC™ 4WD SYSTEM. THIS COMBO WILL GO VIRTUALLY ANYWHERE IT'S DIRECTED. THE FIVE-LINK SUSPENSION ADDS CUSHION TO THE RIDE. THE STANDARD SUNRIDER® SOFT TOP, REMOVABLE DOORS,⁽²⁾ FOLD-DOWN WINDSHIELD⁽²⁾ AND JEEP® BRAND STEERING WHEEL WITH AUDIO AND CRUISE CONTROLS ARE JUST THE START OF WRANGLER SPORT'S GOOD LOOKS. GREAT FUN BEGINS AND CONTINUES RIGHT HERE.



1



Wrangler Sport in Gecko Pearl.



2



3

Properly secure all cargo.



- 1 **DURABLE. WASHABLE. UNSHAKABLE.** + Fear no mud or spills. Every Wrangler comes with removable carpets and a washable interior with drain plugs. Clean your cabin and muddy four-footed friends in a single spray-out.
- 2 **FOUR DOOR 4x4.** + Take on more passengers and more adventure. The four-door Wrangler Unlimited is the only 4WD off-road convertible out there, giving you plenty of room for five adults and their gear. The standard four-wheel disc Antilock Brake System (ABS) and Electronic Stability Control (ESC)⁽⁷⁾ with Hill Start Assist (HSA), all-speed traction control, and Electronic Roll Mitigation (ERM), work to help maintain your safety and security both on the road and on the trail.

3 **NON-STOP UTILITY.** + Sport takes on gear and guests as you see fit. Fold down the rear Fold and Tumble seats for backpacks or canine companions. A reversible cargo mat protects your carpet, while a redesigned storage bin beneath Wrangler's rear floor helps keep valuables secure and out of sight. Unlimited offers Best-In-Class⁽¹⁾ utility with 2457 litres of cargo space with the rear seats folded down.





Shown with Authentic Jeep® Accessories by Mopar®: Classic 5-Spoke Wheel, Chrome Grille, Fender Flares, Element® Doors, Lift Kit, Off-Road Bumpers, Rock Rails, Warn® Winch, Windshield-Mounted Off-Road Lights, and the Extreme Trail Edition Camper (Camper shown with optional wheels).

Properly secure all cargo.

AUTHENTIC ACCESSORIES.



MOPAR® INSPIRES JEEP® VEHICLE OWNERS WITH INNOVATIVE PARTS AND ACCESSORIES – ALL MADE TO SPEC FOR YOUR JEEP WRANGLER. THIS IS WHAT MOPAR DELIVERS, ALONG WITH EXPERT, CARING SERVICE. MOPAR TECHNICIANS ARE THE MASTERS OF YOUR MAKE AND MODEL, WITH ACCESS TO THE TOOLS AND DIAGNOSTIC EQUIPMENT THAT HELP GET THE JOB DONE EFFICIENTLY. CHOOSE AUTHENTIC MOPAR PARTS AND SERVICE, AND YOU’LL DRIVE AWAY WITH PEACE OF MIND.



JK-8 TRUCK CONVERSION KIT. + Do-it-yourselfers can transform a Wrangler Unlimited into a two-seat pickup with ready-to-go parts, or have them installed by your Mopar retailer.

AUTHENTIC JEEP ACCESSORIES BY MOPAR

SPORT. + No matter what adventure you seek, you’ll want to add to the sport of it all with durable and convenient Mopar carriers.

PROTECTION. + Safeguard your vehicle with parts and accessories made precisely for the protection and security of your ride.

STYLE. + Select from a palette of attractive accessories designed to enhance your vehicle’s appearance and express your individual taste.

PERFORMANCE. + From intake manifolds to spoilers, Mopar helps fulfill your need for performance, power, and driving precision.

SEE YOUR RETAILER FOR A BROCHURE OF ALL AUTHENTIC MOPAR ACCESSORIES FOR WRANGLER.



WELL-CONNECTED.

STAY IN TOUCH WITH THE PEOPLE, MUSIC, AND DEVICES THAT MATTER MOST. UCONNECT™ IS AN INTUITIVE HUB FOR ALL YOUR MEDIA — CELL PHONE, NAVIGATION SYSTEM, MP3 PLAYER, AND SMARTPHONE — DESIGNED TO MAKE YOUR LIFE EASIER, WHEREVER YOU ROAM. YOU'LL STAY CONNECTED, INFORMED, ENTERTAINED, AND FOCUSED ON DRIVING WITH THIS USER-FRIENDLY SYSTEM.



PHONE. Uconnect Phone is the in-vehicle, voice-activated communication system that allows you to talk on your Bluetooth® compatible phone virtually hands-free.⁽⁶⁾ This clever system is also smart enough to synchronize with your Bluetooth compatible phone's address book⁽⁶⁾ — up to 1000 entries — every time you get into your vehicle.



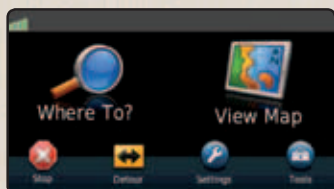
VOICE COMMAND.⁽⁶⁾ It simplifies driving by letting you keep your eyes on the road and your hands on the wheel. Use your voice to select AM/FM radio stations or SIRIUS® Satellite Radio⁽⁵⁾ channels. Make and receive calls. Select navigation destinations, and record voice memos. This smart system technology can also be trained to better recognize your voice and can understand commands in English, French, and Spanish.



ENTERTAINMENT. Manage all of your media. You'll have several ways to access audio. Get the sound going via CDs/DVDs, MP3s, remote USB port, auxiliary input jack, hard disc storage, Voice Command,⁽⁶⁾ and Bluetooth streaming audio.



NAVIGATION.⁽⁴⁾ Provides enhanced GPS navigation⁽⁴⁾ and destination entry via Voice Command.⁽⁶⁾ It can also locate nearby restaurants, shopping, hospitals, or points of local interest.



GARMIN ⁽⁴⁾ **GARMIN® NAV.** Head in the right direction with a Media Centre that includes Garmin, the most recognized name in GPS wayfinding. It features Garmin's intuitive user interface and navigation with lane guidance, bringing the popular handheld experience to a factory in-dash screen.



16-inch Slot Spoke Styled Steel Argent Sport (standard)

17-inch Sparkle Silver Moab Aluminum Sport (available)

17-inch Satin Carbon Moab Aluminum Rubicon (standard) Sport (available)

18-inch Satin Silver Aluminum Sahara (standard)

18-inch Polished Aluminum Sahara (available)

EXTERIOR



- 1 Deep Cherry Red Crystal Pearl
- 2 Flame Red
- 3 Dozer
- 4 Crush
- 5 Gecko Pearl*
- 6 Sahara Tan
- 7 Winter Chill Pearl
- 8 Bright Silver Metallic
- 9 Black Forest Green Pearl*
- 10 Black
- 11 Bright White
- 12 Cosmos Blue

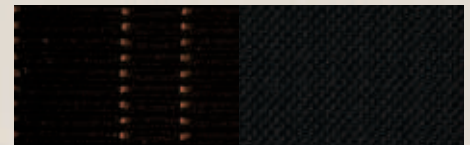
INTERIOR

CLOTH

Black cloth includes a Black monotone interior (Standard on Sport, Sahara, and Rubicon).

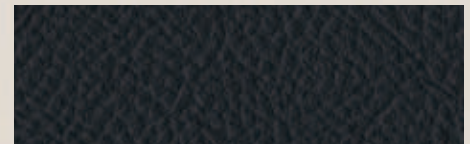


Dark Saddle/Black cloth two-tone includes a two-tone Black/Dark Saddle interior (Standard on Rubicon and Sahara).

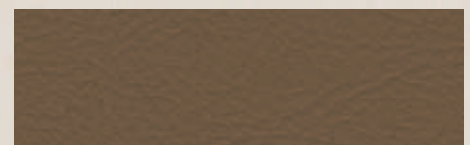


LEATHER-FACED

Black leather-faced with accent stitching includes a Black monotone interior. (Available on Rubicon and Sahara).



Dark Saddle leather-faced with accent stitching includes a two-tone Black/Dark Saddle interior (Available on Rubicon and Sahara).



MEDIA CENTRES



MEDIA CENTRE 130 (RES)

- AM/FM/CD/MP3
- Auxiliary input jack



MEDIA CENTRE 730N (RHR)

Includes Media Centre 430N features, plus:

- Enhanced GPS Navigation with Dead Reckoning, Split Screen and Voice Command[®]
- 20GB Hard Disc Drive
- Uconnect[™] with Voice Command[®] of Phone, Radio, and Music
- Bluetooth[®] Streaming Audio
- Remote USB Port
- iPod[®] Connectivity
- iPod/USB Playback with Radio Controls
- Steering Wheel-Mounted Audio Controls



MEDIA CENTRE 430N (RHB)

Includes Media Centre 130 features, plus:

- 6.5-inch touch-screen
- Garmin[®] GPS Navigation[®]
- 28GB Hard Disc Drive
- CD/DVD/MP3/AM/FM
- USB Port on Radio
- SIRIUS[®] Satellite Radio[®] with One-Year Subscription, SIRIUS Replay, Game Zone, Favourite Song/Artist Alert

*Late availability.



SPECIFICATIONS*

	WRANGLER			WRANGLER UNLIMITED		
	Sport	Sahara	Rubicon	Sport	Sahara	Rubicon
Wheelbase		2424 (95.4)			2947 (116)	
Overall Height	1801 (70.9)	1834 (72.2)	1839 (72.4)	1789 (70.8)	1831 (72.1)	1836 (72.3)
Front Track		1572 (61.9)			1572 (61.9)	
Rear Track		1572 (61.9)			1572 (61.9)	
Overall Width		1872 (73.7)			1877 (73.9)	
Overall Length		3881 (152.8)			4405 (164.2)	
Ground Clearance	224 (8.8)	262 (10.3)	259 (10.2)	221 (8.7)	259 (10.2)	257 (10.1)
Front Head Room		1049 (41.3)			1048 (41.3)	
Rear Head Room		1024 (40.3)			1025 (40.4)	
Front Leg Room		1041 (41.0)			1041 (41.0)	
Rear Leg Room		904 (35.6)			945 (37.2)	
Front Hip Room		1412 (55.6)			1413 (55.6)	
Rear Hip Room		1135 (44.7)			1440 (56.7)	
Front Shoulder Room		1417 (55.8)			1417 (55.8)	
Rear Shoulder Room		1565 (61.6)			1443 (56.8)	
Cargo Volume						
Rear Seat Up		487 (17.2)			1314 (46.4)	
Rear Seat Folded					2457 (86.8)	
Rear Seat Tumbled		1600 (56.5)				
Seating Capacity		4			5	
Curb Weight						
4WD Manual Trans, kg (lb)	1710 (3879)	1859 (4065)	1874 (4132)	1940 (4277)	1994 (4397)	2051 (4524)
4WD Auto Trans, kg (lb)	1765 (3892)	1846 (4069)	1881 (4146)	1946 (4291)	2001 (4411)	2057 (4535)
GVWR, kg (lb)	2223 (4900)	2268 (5000)	2313 (5100)	2449 (5400)	2449 (5400)	2585 (5700)
Towing Capacity, max, kg (lb)		907 (2000)			1588 (3500)	
Fuel Tank Capacity, L (imp. gal.)		70.4 (15.4)			85.2 (18.7)	

*All measurements in millimetres (inches) unless otherwise specified.

SAFETY AND SECURITY

STANDARD

- Electronic Stability Control (ESC)⁽⁷⁾ with Electronic Roll Mitigation, Hill Start Assist and All-Speed Traction Control
- Advanced multistage front air bags⁽⁸⁾
- Four-wheel antilock disc brakes
- Sentry Key[®] engine immobilizer
- Tire pressure warning lamp
- Enhanced Accident Response System (EARS)

AVAILABLE

- Front-seat side air bags⁽⁸⁾
- Security alarm
- Trailer Sway Control
- Hill Descent Control

ENGINE PERFORMANCE

Model	Engine	Transmission	Fuel Economy L/100 km (mpg) City / Highway ⁽⁹⁾	Horsepower	Torque
Wrangler	3.6L Pentastar™ VVT V6	6-Speed Manual	12.7 (22) / 9.3 (30)	285	260 lb-ft
		5-Speed Automatic	12.6 (22) / 9.5 (30)		
Wrangler Unlimited		6-Speed Manual	13.4 (21) / 9.6 (29)		
		5-Speed Automatic	13.2 (21) / 10.0 (28)		

SPORT B

SELECT STANDARD EQUIPMENT

- 3.6L Pentastar™ VVT V6 engine
- 6-speed manual transmission
- Command-Trac™ Transfer case
- Trail Rated®
- Premium cloth seating
- Steering wheel with audio and cruise control
- 16-inch styled steel wheels
- Electronic Stability Control⁽⁷⁾ with Hill Start Assist, All-Speed Traction Control and Electronic Roll Mitigation
- Removable doors⁽²⁾, fold-down windshield, and overhead sound bar
- Dana® 44 rear axle, Dana 30 front axle
- Multistage front air bags⁽⁸⁾
- 3.21 rear axle ratio
- Sunrider® Soft Top
- Fog lamps
- Two front and one rear tow hooks
- Media Centre 130 with six speakers and auxiliary input jack
- Four-wheel antilock disc brakes
- Fold and Tumble removable rear seat
- Accent-colour fender flares
- Easy-wash-out interior including removable carpet with drain plugs
- Fuel tank skid plate
- Full-size spare tire
- Rear compartment covered storage

OPTIONS

- 5-speed automatic transmission
- Connectivity Group
- Mopar® Chrome Edition Group
- Mopar Premium Chrome Group
- Trailer Tow Group
- Black Appearance Group
- 3.73 rear axle ratio
- Air conditioning
- Tubular side steps
- SIRIUS® Satellite Radio including one-year subscription⁽⁵⁾
- 17-inch Sparkle Silver Moab Aluminum Wheels
- P255/75R17 OWL on-/off-road tires
- Jeep® Freedom Top® hardtop (Black)

SPORT S

DIFFERENCES/UPGRADES VS. SPORT B

- 17-inch aluminum wheels
- Chrome leather-wrapped shift knob
- Deep-tint sunscreen glass
- Split-folding rear seat (Unlimited model)
- No-charge air conditioning (two-door model)
- No-charge SIRIUS Satellite Radio including one-year subscription (two-door model)⁽⁵⁾

OPTIONS

- 5-speed automatic transmission
- Connectivity Group
- Mopar Chrome Edition Group
- Mopar Premium Chrome Group
- Trailer Tow Group
- Black Appearance Group
- 3.73 rear axle ratio
- Tubular side steps
- Power Convenience Group
- Dual Top Group
- Jeep Freedom Top hardtop (Black)
- Metal half doors with locks
- Antispin differential rear axle
- 32-inch Tire and Wheel Group
- Six ∞Infinity® speakers

SAHARA

DIFFERENCES/UPGRADES VS. SPORT S

- Black Jeep Freedom Top (three piece modular hardtop)
- 18-inch aluminum wheels
- Automatic headlamps
- Power locks and windows
- Six ∞Infinity® speakers with 368-watt amplifier
- Power heated exterior mirrors
- Heavy-duty suspension with gas-charged shocks
- Body-colour fender flares and bright bumper overlays
- Bright interior accents
- 115V auxiliary power outlet

OPTIONS

- 5-speed automatic transmission
- 18-inch polished aluminum wheels
- 3.73 rear axle ratio
- Air conditioning with automatic temperature control
- Antispin differential rear axle
- Body-colour Freedom Top hardtop
- Connectivity Group
- Dual Top Group
- Heated front seats
- Media Centre 430N
- Media Centre 730N
- Mopar Chrome Edition Group
- Mopar Premium Chrome Group
- Remote start
- SIRIUS Satellite Radio including one-year subscription⁽⁵⁾
- Supplemental front-seat side air bags⁽⁸⁾
- Trailer Tow Group

RUBICON

DIFFERENCES/UPGRADES VS. SAHARA

- Sunrider Soft Top
- Tru-Lok® front and rear axles
- 4.10 rear axle (3.73 automatic)
- 4:1 Rock-Trac® heavy-duty transfer case
- Electronic sway bar disconnect
- 17-inch Satin Carbon Moab aluminum wheels
- 32-inch BFGoodrich® tires
- Dana® 44 front axle
- Performance suspension with gas-charged shocks
- Rock rails

OPTIONS

- 5-speed automatic transmission
- Air conditioning with automatic temperature control
- Jeep Freedom Top hardtop (Black)
- Body-colour fender flares (requires body-colour hardtop)
- Body-colour Freedom Top hardtop
- Connectivity Group
- Dual Top Group
- Metal half doors with locks
- Heated front seats
- Katzkin™ deluxe leather two-tone seats
- Trailer Tow Group (two-door model only)
- Max Tow Package (Unlimited model only)
- Media Centre 430N
- Media Centre 730N
- Remote start
- SIRIUS Satellite Radio including one-year subscription⁽⁵⁾
- Supplemental front-seat side air bags⁽⁸⁾
- 4.10 rear axle ratio (automatic)

PACKAGE DETAILS

CONNECTIVITY GROUP

- Chrome/leather-wrapped shift knob
- Leather-wrapped steering wheel
- Remote USB port
- Uconnect™ Hands-Free Communication⁽⁶⁾
- Electronic Vehicle Information Centre (EVIC)

MOPAR CHROME EDITION GROUP

- Chrome taillamp guards
- Chrome tubular side steps
- Chrome exhaust tips
- Chrome fuel-filler door

MOPAR PREMIUM CHROME GROUP

- Chrome exterior mirrors
- Chrome grille

BLACK APPEARANCE GROUP

- Black tubular side steps
- Black taillamp guards
- Black fuel filler door

TRAILER TOW GROUP

- Trailer sway damping
- Class II receiver hitch
- Trailer tow with 4-pin connector wiring

MAX TOW PACKAGE

- 3.73 rear axle ratio (not included with 6-speed manual on Rubicon)
- Class II hitch receiver on Rubicon
- Trailer tow with 4-pin connector wiring

32-INCH TIRE AND WHEEL GROUP

- Performance suspension
- LT255/75R17 BSW BFGoodrich® Off-Road Tires
- 17-inch Satin Carbon aluminum wheels

POWER CONVENIENCE GROUP

- Power heated mirrors
- Remote keyless entry
- Power locks
- Power windows, front one-touch down
- Security alarm

DUAL TOP GROUP

- Sunrider Soft Top
- Black modular three-piece Freedom Top hardtop
- Rear window defroster
- Rear wiper and washer
- Jeep Freedom Top panel storage bag



A black Jeep Wrangler is driving away on a dirt trail through a lush green forest. The trail is dusty, and the background features snow-capped mountains under a clear blue sky. The scene is captured from a high angle, looking down at the vehicle.

THE ADVENTURE
NEVER ENDS.



Jeep®

Disclaimers. 1) Based on *Ward's* 2011 Small Sport Utility Vehicle segmentation. 2) Be sure to follow all instructions in Owner's Manual for removal of top, doors, and lowering of windshield. Driving with doors off and windshield down is for off-road use only. 3) Do not attempt water fording unless depth is known to be less than 76 cm (30 inches). 4) Never program while driving. GPS mapping may not be detailed in all areas or reflect current road regulations. Navigation function uses part of the 40GB capacity. 5) Requires SIRIUS® Satellite Radio. Subscriptions governed by SIRIUS Terms and Conditions available at siriuscanada.ca. 6) Must use Bluetooth® compatible phone. Driving while distracted can result in loss of vehicle control. Only use mobile phones and other devices, even with Voice Command, when it is safe to do so. 7) No system, no matter how sophisticated, can repeal the laws of physics or overcome careless driving actions. Performance is limited by available traction, which snow, ice, and other conditions can affect. When the ESC warning lamp flashes, the driver needs to use less throttle and adapt speed and driving behaviour to prevailing road conditions. Always drive carefully, consistent with conditions. Always wear your seat belt. 8) The Advanced Front Air Bags in this vehicle are certified to the U.S. federal regulations for advanced air bags. Children 12 years old and younger should always ride buckled up in a rear seat. Infants in rear-facing child restraints should never ride in the front seat of a vehicle with a passenger front air bag. All occupants should always wear their lap and shoulder belts properly. 9) 2012 EnerGuide ratings shown. Transport Canada test methods used. Actual fuel consumption may vary.

About this catalogue. Since the time of printing, some of the information you'll find in this catalogue may have been updated. Ask your retailer for details. Some of the equipment shown or described throughout this catalogue is available at extra cost. Specifications, descriptions, illustrative materials, and all competitive comparisons contained herein are as accurate as known at the time this publication was approved for printing. Chrysler Canada Inc. reserves the right to make changes at any time without notice and without incurring obligation. All options are required in combination with other options. For the price of the model with the equipment you desire, or verification of specifications contained herein, see your Chrysler, Jeep, Dodge, Ram Retailer. Jeep, Wrangler, the Jeep grille, Mopar, Sentry Key, Tru-Lok, Rock-Trac, Rubicon, Sahara, Trail Rated, and Freedom Top are registered trademarks and Command-Trac, Go Anywhere, Do Anything, Pentastar and Uconnect are trademarks of Chrysler Group LLC. Dana is a registered trademark of Dana Corporation. Element and Sunrider are registered trademarks of Bestop, Inc. Katzkin and the Katzkin logo are registered trademarks of Katzkin Leather Interiors, Inc. BFGoodrich is a registered trademark of Goodrich Corporation. Garmin and the Garmin logo are registered trademarks of Garmin, Ltd or its subsidiaries and are registered in one or more countries. All rights reserved. SIRIUS, XM and related marks and logos are trademarks of SiriusXM Radio Inc. Bluetooth is a registered trademark of Bluetooth SIG, Inc. iPod is a registered trademark of Apple Inc. All rights reserved. ∞Infinity is a registered trademark of Harman Industries, Inc. Warn is a registered trademark of Warn Industries, Inc.

Service. 2012 Chrysler Service Contracts. Chrysler Canada Inc. has a vested interest in your satisfaction and owner experience with your new vehicle. Chrysler Canada Service Contracts offer extended service and maintenance plans to help ensure you'll enjoy your vehicle for many years down the road - for just pennies a day. For more information on comprehensive vehicle coverage, see your local Chrysler, Jeep, Dodge, and Ram retailer, call 1-800-361-3700, or visit chryslercanada.ca/owners

Warranties. 2012 Chrysler, Jeep, Dodge and Ram vehicles are backed by a 5-Year or 100,000-Kilometre* fully transferable Powertrain Limited Warranty with 80 deductible plus 24-hour roadside assistance! Basic Warranty coverage is for 3 years or 60,000 kilometres.* Rust-through coverage on all body sheet metal is for 3 years. The Cummins® Turbo Diesel engine is protected by a separate Limited Warranty, covering the engine for 5 years or 160,000 kilometres.*

*Whichever comes first.† Some conditions may apply. The 5-Year/100,000-Kilometre Powertrain Limited Warranty does not apply to vehicles sold for certain commercial uses or to SRT® models. See your retailer for details.

Jeep is a registered trademark of Chrysler Group LLC.

52012C576E

(800) 361-3700

jeep.ca



Mixed Sources
Produced from well-managed
forests. **FPO** sources and
recycled wood or fibre
www.fsc.org Cert no. SGS-COC-004609
© 1996 Forest Stewardship Council