

XL

HIGHLIGHTS

- 6 IN-CAB UPFITTER SWITCHES
- FORDPASS™ CONNECT¹ WITH 4G LTE WI-FI HOTSPOT CAPABILITY²
- SYNC® WITH 4.2" LCD SCREEN AND 1 SMART-CHARGING USB PORT
- MANUALLY TELESCOPING TRAILER TOW MIRRORS
- AUTOLAMP (AUTOMATIC ON/OFF HEADLAMPS) WITH RAINLAMP



F-350 SUPERCAB™ 4x4. Oxford White. Available and aftermarket upfit equipment.



Instrument panel. Dark Earth Gray interior. Available equipment.

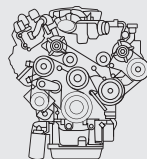


Front 40/20/40 split bench seat. Available Dark Earth Gray cloth seats. Available equipment. See charts in the back of the brochure for full trim specifications.

THE CORNERSTONE

Featuring a black grille and front bumper, plus heavy-duty vinyl seating, XL is a no-nonsense work truck that's the bedrock of the Chassis Cab truck lineup. All the capability and standard features to get you comfortably through the work week are here, including your choice of 3 powerful engines and a TorqShift® 10-speed SelectShift® automatic transmission calibrated specifically for heavy-duty work.

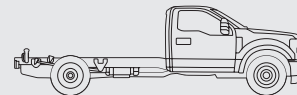
1. FordPass Connect, the FordPass App, and complimentary Connected Service are required for remote features (see FordPass Terms for details). Connected service and features depend on compatible AT&T network availability. Evolving technology/cellular networks/vehicle capability may limit functionality and prevent operation of connected features. Connected service excludes Wi-Fi hotspot. At purchase, the FordPass Connect modem is connected and sending vehicle data (e.g., diagnostics) to Ford. To disable, or for more information, see in-vehicle connectivity settings. Learn more at FordConnected.com. 2. Wi-Fi hotspot includes complimentary wireless data trial that begins upon AT&T activation and expires at the end of 3 months or when 3GB of data is used, whichever comes first, but cannot extend beyond the complimentary subscription period for remote features. To activate, go to www.att.com/ford.



6.2L 2-VALVE GAS V8 FFV
Standard: F-350

7.3L 2-VALVE GAS V8
Standard: F-450, F-550, F-600
Available: F-350

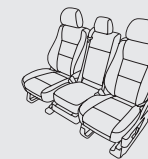
6.7L POWER STROKE® V8 TURBO DIESEL
Available: F-350, F-450, F-550, F-600



REGULAR CAB
F-350 SRW 60" CA
F-350 DRW 60" CA/84" CA
F-450 DRW 60" CA/84" CA/108" CA/120" CA
F-550 DRW 60" CA/84" CA/108" CA/120" CA
F-600 DRW 60" CA/84" CA/108" CA/120" CA

SUPERCAB
F-350 SRW 60" CA
F-350 DRW 60" CA
F-450 DRW 60" CA/84" CA
F-550 DRW 60" CA/84" CA

CREW CAB
F-350 SRW 60" CA
F-350 DRW 60" CA
F-450 DRW 60" CA/84" CA
F-550 DRW 60" CA/84" CA



FRONT 40/20/40 SPLIT BENCH SEAT
Standard

FRONT BUCKET SEATS WITH MINI-CONSOLE
Available

XLT

HIGHLIGHTS

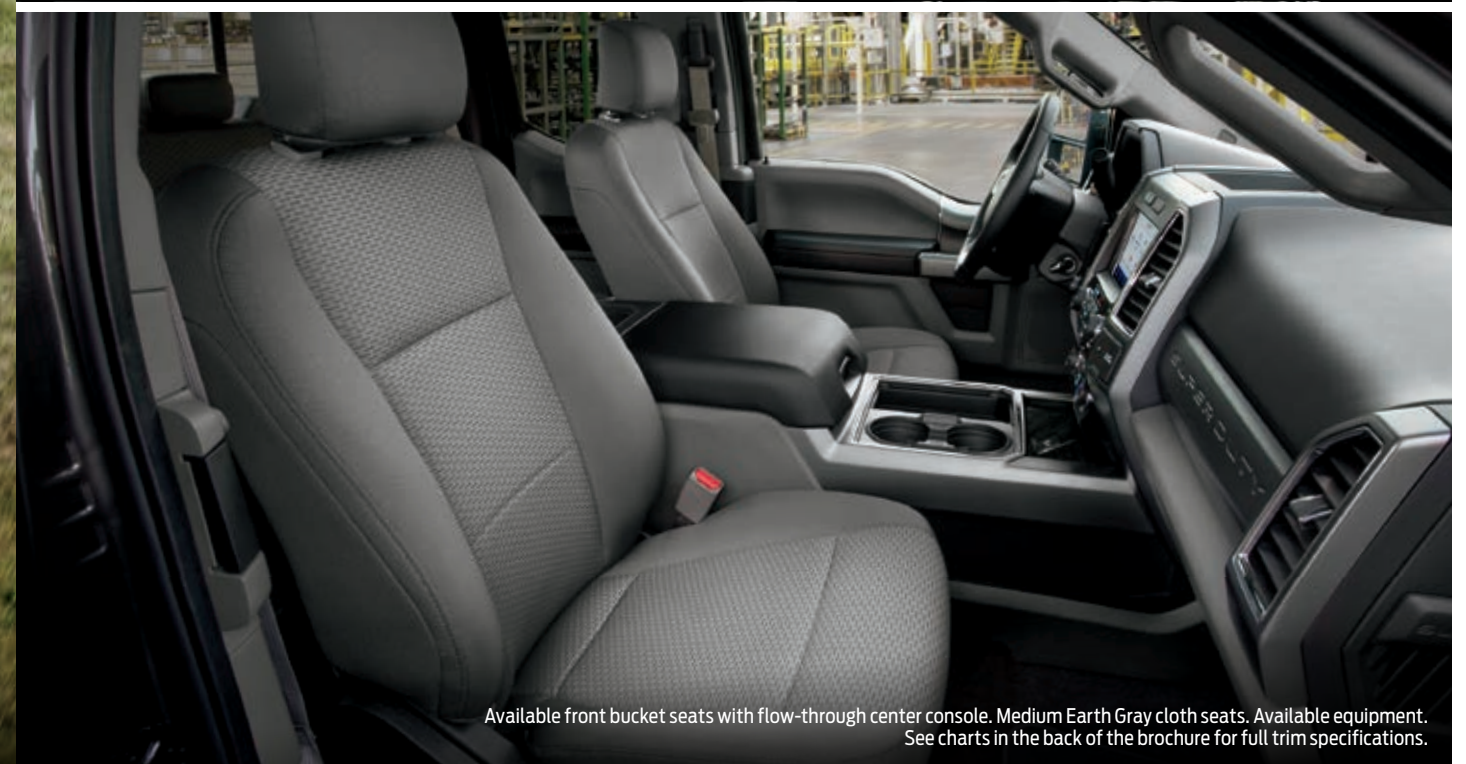
MYKEY® TECHNOLOGY
POWER DOOR LOCKS AND WINDOWS
REMOTE KEYLESS ENTRY SYSTEM
SYNC® 3 WITH 8" LCD TOUCHSCREEN
AND 2 SMART-CHARGING USB PORTS
TRAILER BRAKE CONTROLLER



F-450 SUPERCAB™ 4x4. Iconic Silver Metallic. Available and aftermarket upfit equipment.



Instrument panel. Medium Earth Gray interior. Available equipment.

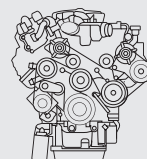


Available front bucket seats with flow-through center console. Medium Earth Gray cloth seats. Available equipment. See charts in the back of the brochure for full trim specifications.

THE UTILITY PLAYER

XLT includes great XL equipment, plus the right level of refinement from its substantial list of standard features: chrome grille and front bumper; cloth seating and carpeted flooring; power windows and door locks; SYNC 3, trailer brake controller, and SiriusXM.¹ An incredibly versatile Chassis Cab truck, XLT does just about everything well.

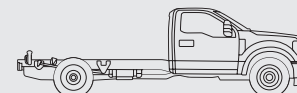
1. Trial length and service availability may vary by model, model year or trim. All SiriusXM services require a subscription, each sold separately by SiriusXM after the trial period. Service will automatically stop at the end of your trial unless a subscription is purchased. See the SiriusXM Customer Agreement at www.siriusxm.com for complete terms. Some services and features are subject to device capabilities and location availability. All fees, content and features are subject to change.



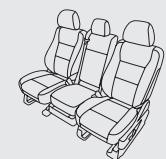
6.2L 2-VALVE GAS V8 FFV
Standard: F-350

7.3L 2-VALVE GAS V8
Standard: F-450, F-550, F-600
Available: F-350

**6.7L POWER STROKE® V8
TURBO DIESEL**
Available: F-350, F-450, F-550, F-600



REGULAR CAB	SUPERCAB	CREW CAB
F-350 SRW 60" CA	F-350 SRW 60" CA	F-350 SRW 60" CA
F-350 DRW 60" CA/84" CA	F-350 DRW 60" CA	F-350 DRW 60" CA
F-450 DRW 60" CA/84" CA/108" CA/120" CA	F-450 DRW 60" CA/84" CA	F-450 DRW 60" CA/84" CA
F-550 DRW 60" CA/84" CA/108" CA/120" CA	F-550 DRW 60" CA/84" CA	F-550 DRW 60" CA/84" CA
F-600 DRW 60" CA/84" CA/108" CA/120" CA		



**FRONT 40/20/40
SPLIT BENCH SEAT**
Standard

**FRONT BUCKET SEATS
WITH CENTER CONSOLE**
Available

LARIAT™

HIGHLIGHTS

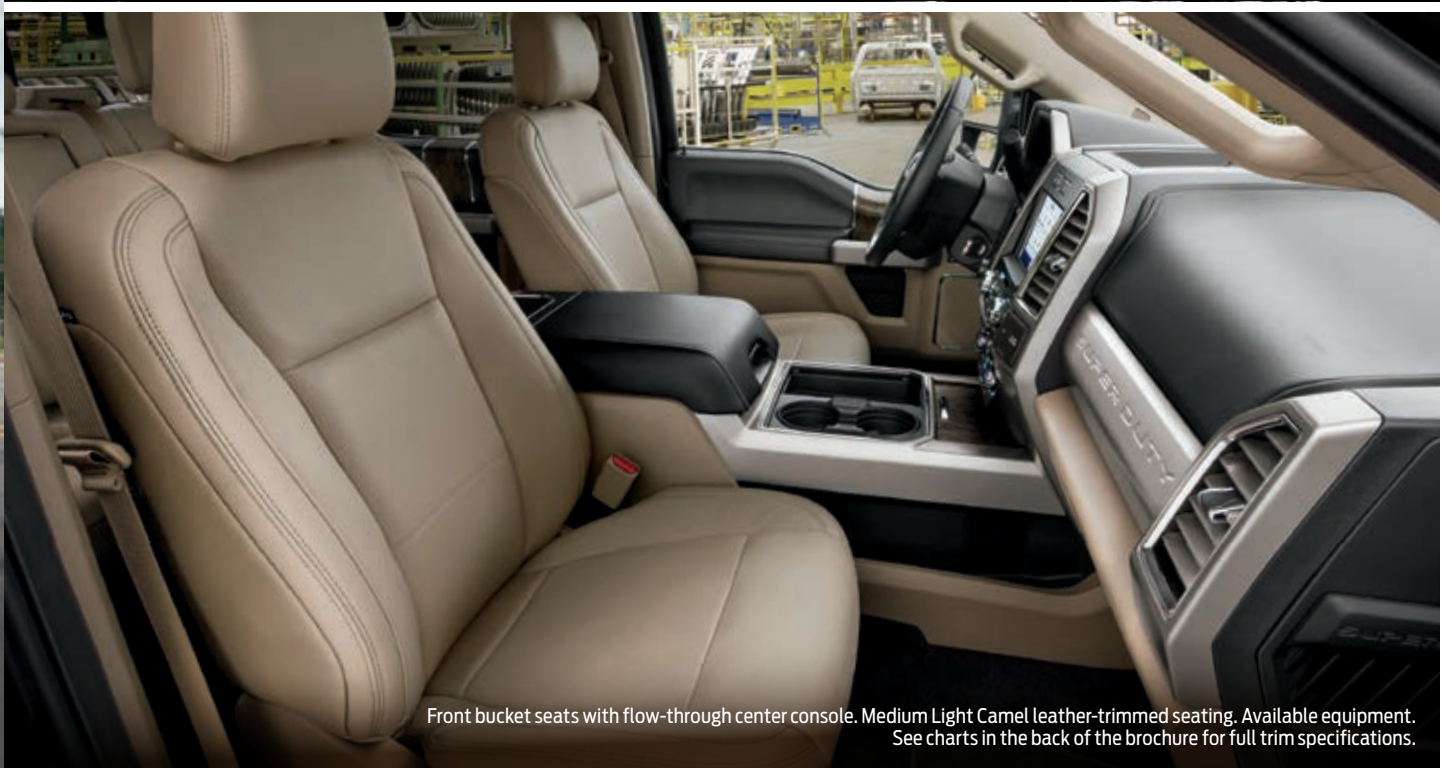
DUAL-ZONE ELECTRONIC AUTOMATIC
TEMPERATURE CONTROL
8" LCD PRODUCTIVITY SCREEN
IN INSTRUMENT CLUSTER
110V/400W AC POWER OUTLETS
POWERSCOPE® TRAILER
TOW MIRRORS
SECURICODE™ KEYLESS ENTRY KEYPAD



Instrument panel. Black interior. Available equipment.



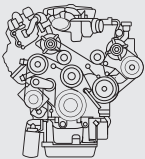
F-550 CREW CAB 4x4. Oxford White. Available and aftermarket upfit equipment.



Front bucket seats with flow-through center console. Medium Light Camel leather-trimmed seating. Available equipment. See charts in the back of the brochure for full trim specifications.

CAPABLE COMFORT

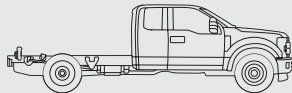
You're ready to tackle any day in LARIAT. A leather-trimmed, 10-way power-adjustable front bucket driver's seat and power-adjustable pedals help you feel right at home. An 8" LCD productivity screen puts vital vehicle information front and center, while the remarkable 10-speaker B&O Sound System handles the tunes. Choose the available LARIAT Value Package to add heated and ventilated front seats, memory for the power-adjustable pedals and power sideview mirrors, and more. LARIAT is a welcome mix of capability and comfort.



6.2L 2-VALVE GAS V8 FFV
Standard: F-350

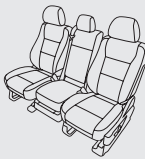
7.3L 2-VALVE GAS V8
Standard: F-450, F-550
Available: F-350

**6.7L POWER STROKE® V8
TURBO DIESEL**
Available: F-350, F-450, F-550



SUPERCAB™
F-350 SRW 60" CA
F-350 DRW 60" CA
F-450 DRW 60" CA/84" CA
F-550 DRW 60" CA/84" CA

CREW CAB
F-350 SRW 60" CA
F-350 DRW 60" CA
F-450 DRW 60" CA/84" CA
F-550 DRW 60" CA/84" CA



**FRONT BUCKET SEATS
WITH CENTER CONSOLE**
Standard
**FRONT 40/20/40
SPLIT BENCH SEAT**
Available

STANDARD FEATURES

MECHANICAL & FUNCTIONAL

4-wheel disc brakes with Anti-Lock Brake System (ABS)
7-wire trailer tow wiring harness with relays, blunt cut and labeled
40-gallon aft-of-axle fuel tank
Axle – Narrow-track front (F-350)
Axle – Wide-track front (F-450/F-550/F-600; includes black front fenders)
Electronic shift-on-the-fly (ESOF) transfer case with manual locking hubs (4x4)
Heavy-duty gas shock absorbers
Hydraulic power-assisted steering
Intelligent Oil-Life Monitor® (diesel engine)
Leaf-spring rear suspension with auxiliary springs and stabilizer bar
Oil-life minder (gas engine)
Power takeoff (PTO) provision with live-drive mobile and stationary modes, and split-shaft capability (diesel engine; PTO port located on driver's side; max. torque output of 300 lb.-ft. in stationary mode)
Stationary Elevated Idle Control (SEIC) ¹
Steering damper
TorqShift® 10-speed SelectShift® automatic transmission with Selectable Drive Modes
Twin-coil monobeam front suspension with stabilizer bar (F-350 4x4/F-450/F-550/F-600)
Twin-I-Beam coil spring front suspension with stabilizer bar (F-350 4x2)
Upfitter switches, 6 located in overhead console (four 25-amp and two 40-amp; 40-amp are hot-at-all-times capable)

FORD CO-PILOT360™ TECHNOLOGY

Autolamp (Automatic On/Off Headlamps)
Hill Start Assist
Trailer Sway Control

CONNECTIVITY & ENTERTAINMENT

12V powerpoint in instrument panel
FordPass™ Connect ² with 4G LTE Wi-Fi hotspot capability ³

EXTERIOR

Configurable daytime running lamps
Front splash guards (F-450/F-550/F-600)
Front tow hooks
LED roof marker/clearance lamps
Underhood service lamp
Variable-intermittent windshield wipers with washers

SAFETY & SECURITY

AdvanceTrac® with RSC® (Roll Stability Control™)
Driver and right-front-passenger front airbags ⁴ front-seat side airbags, ⁴ and Safety Canopy® System with side-curtain airbags ⁴ and rollover sensor
Front-passenger airbag deactivation switch
Individual Tire Pressure Monitoring System (F-350; optional spare tire does not include sensor)
SOS Post-Crash Alert System™

1. Final-stage manufacturer must supply control switches. **2.** FordPass Connect, the FordPass App, and complimentary Connected Service are required for remote features (see FordPass Terms for details). Connected service and features depend on compatible AT&T network availability. Evolving technology/cellular networks/vehicle capability may limit functionality and prevent operation of connected features. Connected service excludes Wi-Fi hotspot. FordPass App, compatible with select smartphone platforms, is available via download. Message and data rates may apply. **3.** Wi-Fi hotspot includes complimentary wireless data trial that begins upon AT&T activation and expires at the end of 3 months or when 3GB of data is used, whichever comes first, but cannot extend beyond the complimentary subscription period for remote features. To activate, go to www.att.com/ford. **4.** Always wear your safety belt and follow airbag warning label instructions. **5.** Restrictions may apply. See your dealer for details. **6.** Trial length and service availability may vary by model, model year or trim. All SiriusXM services require a subscription, each sold separately by SiriusXM after the trial period. Service will automatically stop at the end of your trial unless a subscription is purchased. See the SiriusXM Customer Agreement at www.siriusxm.com for complete terms. Some services and features are subject to device capabilities and location availability. All fees, content and features are subject to change. **7.** Ford Licensed Accessory. **8.** See dealer for springs/front Gross Axle Weight Rating (GAWR) of specific vehicle configurations.

XL	XLT	LARIAT™	S: STANDARD O: OPTIONAL P: PACKAGED
S	S	S	ENGINES
S	S	S	6.2L 2-valve gas V8 FFV engine (F-350)
S	S	S	7.3L 2-valve gas V8 engine (F-450/F-550/F-600)
O	O	O	7.3L 2-valve gas V8 engine (F-350)
O	O	O	6.7L Power Stroke® V8 Turbo Diesel engine with manual push-button engine exhaust braking
			MECHANICAL & FUNCTIONAL
S			650-CCA, 72-amp-hr single battery (6.2L gas)
S	S	S	750-CCA, 78-amp-hr single battery (gas)
5/0	5/0	5/0	750-CCA, 78-amp-hr dual batteries (standard diesel; standard on XLT and LARIAT with 7.3L gas)
S	S	S	Fuel tank – 40-gallon aft-of-axle
5/0	5/0	O	Power takeoff (PTO) provision with live-drive mobile and stationary modes ⁵ (gas engines; standard on F-600; PTO port located on driver's side; max. torque output of 250 lb.-ft. in stationary mode)
O	S	S	Trailer brake controller with Smart Trailer Tow Connector ⁵
O	O		Aft-of-axle frame extension ⁵ (F-450/F-550/F-600 Regular Cab 145" and 169" wheelbases)
O	O		Engine idle shutdown (5-, 10-, 15- or 20-minute)
O	O	O	Fuel tank – 26.5-gallon mid-ship ⁵ (replaces standard tank)
O	O		Fuel tanks – Dual diesel with 40-gallon aft-of-axle and 26.5-gallon mid-ship (DRW diesel engine)
O	O		Individual Tire Pressure Monitoring System delete (F-350 SRW; Fleet only)
O	O		Operator-commanded exhaust filter regeneration with active regeneration inhibit (diesel engine)
O	O		Speed limitation (65-mph or 75-mph governed top speed; Fleet only)
O	O	O	Engine block heater
O	O	O	Front license plate bracket (standard where required)
O	O	O	Jack (2-ton mechanical for SRW; 4-ton hydraulic for F-350 DRW; 6-ton hydraulic for F-450/F-550/F-600)
O	O	O	Programmable Upfitter Interface Module
O	O	O	Spare wheel, tire and jack (excludes carrier)
			FORD CO-PILOT360 TECHNOLOGY
O	O	O	Audible Lane Departure Warning ⁵
O	O	O	Pre-Collision Assist with Automatic Emergency Braking (AEB) and Auto High-Beam Headlamps ⁵
	O	O	Voice-Activated Touchscreen Navigation System with HD Radio™ Technology, and integrated SiriusXM® Traffic and Travel Link® with 5-year subscription ⁶
		O	Rain-Sensing Windshield Wipers
			SEATING
S	S	S	60/40 split flip-up rear seat (SuperCab™/Crew Cab)
S			40/20/40 split front bench seat with driver's side manual lumbar, and folding armrest with cupholders
S			Heavy-duty vinyl seats
O	S		Cloth seats
	S	O	40/20/40 split front bench seat with driver's side manual lumbar, and center under-seat lockable storage with 12V powerpoint, and folding armrest with cupholders and storage
		S	Leather-trimmed front seating
		S	Fold-down rear-seat center armrest with dual integrated cupholders (Crew Cab)
		S	Front bucket seats and flow-through center console with storage, rear-facing 12V powerpoint and 110V/400W AC power outlet
		S	Power front seats (10-way driver; 8-way passenger)
		S	Premium vinyl (SuperCab) or leather-trimmed (Crew Cab) rear seating
		S	Rear under-seat fold-flat, lockable and partitionable storage (Crew Cab)
		S	Rear under-seat storage (SuperCab)
O			Front bucket seats with mini-console and driver's side manual lumbar
	O		Front bucket seats and flow-through center console with storage, rear-facing 12V powerpoint and 110V/400W AC power outlet (SuperCab/Crew Cab)
		O	Heated driver's seat ⁵ (SuperCab/Crew Cab)
		O	Heated rear outboard seats ⁵ (Crew Cab)

XL	XLT	LARIAT	
S			INTERIOR
S			2.3" LCD productivity screen in instrument cluster
S	S		Fixed rear window
S	S		Single-zone manual climate control
S	O	O	Flooring – Black vinyl/carpet delete
S	S	S	Manual-tilt/-telescoping steering column
O	S	S	Cruise control (Fleet only on XL)
O	S	S	Rear privacy glass
	S	S	Flooring – Carpet with carpeted floor mats
P	S	S	Accessory delay for power features
P	S	S	Power door locks
P	S	S	Power windows with front one-touch-up/-down feature
	S		4.2" LCD productivity screen in instrument cluster
O	O	S	Power-sliding rear window with defroster ⁵ (SuperCab/Crew Cab)
	O	S	Power-adjustable pedals
		S	8" LCD productivity screen in instrument cluster
		S	Auto-dimming rearview mirror
		S	Dual-zone electronic automatic temperature control
		S	Leather-wrapped steering wheel
O	O		Fixed rear window with defroster
O	O	O	Rapid-heat supplemental cab heater (diesel engine)
	O	O	Flooring – Floor liners (SuperCab/Crew Cab)
	O	O	Vehicle safe ^{5,7}
			EXTERIOR
S			Black grille, front bumper, mirror caps, and door handles
S			Manually telescoping trailer tow mirrors with 2-way fold and manual glass
S	S	S	Quad-beam jewel-effect halogen headlamps
O	S		Manually telescoping trailer tow mirrors with 2-way fold, power/heated glass, heated manual spotter mirrors, and integrated clearance lamps/turn signal indicators (XL requires Power Equipment Group)
	S		Chrome grille and front bumper; black mirror caps and door handles
P	S	S	Remote Keyless Entry System
O	O	S	Halogen fog lamps ⁵
O	O	S	LED sideview mirror spotlights ⁵
	O	S	PowerScope® power-telescoping/-folding trailer tow mirrors with power/heated glass, heated manual spotter mirrors, autofold, high-intensity LED security approach lamps, and LED sideview mirror spotlights
		S	Chrome grille, and front bumper; body-color mirror caps and door handles
O			Chrome grille (Fleet only)
O	O		Manually telescoping trailer tow mirrors with 2-way fold, power/heated glass, heated manual spotter mirrors, and integrated clearance lamps/turn signal indicators (102" width; Regular Cab DRW)
O	O		Non-configurable daytime running lamps (replaces standard configurable daytime running lamps; Fleet only)
O	O	O	Black molded hood deflector
O	O	O	Cab steps – Black platform running boards
O	O	O	Camera – Rear View Camera and prep kit (includes pre-installed body and frame wiring, loose camera with mounting bracket, and 20' jumper wire)
O	O	O	Center high-mounted stop lamp (CHMSL)
O	O	O	Exterior backup alarm ⁷
O	O	O	LED warning strobes ^{5,7} (amber or amber/white)
O	O	O	Remote Start System ⁵
O	O	O	Skid plate for transfer case (4x4)
O	O	O	Splash guards, molded, front (F-350)
O	O	O	Wheel-well liners, front
			CONNECTIVITY & ENTERTAINMENT
S			SYNC® Voice Recognition Communications and Entertainment System with 4.2" LCD screen, 911 Assist® AppLink®, and 1 smart-charging USB port
S	S		AM/FM stereo with MP3 capability
O	O	S	110V/400W AC power outlet in instrument panel ⁵
O	S		SiriusXM ⁵ with 3-month All Access trial subscription ⁶
		S	SYNC 3 ⁵ with 8" LCD capacitive touchscreen in center stack, 911 Assist, AppLink, Apple CarPlay® compatibility, Android Auto™ compatibility, and 2 smart-charging USB ports
		S	B&O Sound System with MP3 capability, and 10 speakers including a subwoofer

XL	XLT	LARIAT	
P	S	S	SAFETY & SECURITY
P	S		Advanced Security Pack with inclination/intrusion sensors
P	S		MyKey® technology to help encourage responsible driving
	P	S	SecuriLock® Passive Anti-Theft System
	P	S	SecuriCode™ keyless entry keypad
			FUNCTIONAL PACKAGES
O			Trailer Tow Package ⁵ (F-350/F-450/F-550): aftermarket trailer brake wiring kit (trailer brake controller not included)
O	O		7.3L CNG/Propane Gaseous Engine Prep Package (F-450/F-550/F-600): hardened engine intake valves and valve seats
O	O		Ambulance Prep Package ⁵ (Fleet only): 397-amp alternator, 7,000-lb. max. front springs/GAWR rating for configuration selected, operator-commanded exhaust filter regeneration (diesel engine), and wide-track rear axle (F-350 DRW with diesel engine)
O	O		Ambulance Prep Package with EPA Special Emissions ⁵ (Fleet only; requires diesel engine): 397-amp alternator, 7,000-lb. max. front springs/GAWR rating for configuration selected, operator-commanded exhaust filter regeneration, wide-track axle (F-350 DRW), and federal emissions
O	O		Fire/Rescue Prep Package with EPA Special Emissions ⁵ (Fleet only; requires diesel engine): 397-amp alternator, 7,000-lb. max. front springs/GAWR rating for configuration selected, operator-commanded exhaust filter regeneration, and federal emissions
O	O		Payload Upgrade Package ⁵ (F-550 60" CA 7.3L gas engine): upgraded frame, upgraded rear axle, and 19,000-lb. GVWR
O	O		Wrecker Package ⁵ (F-450 Regular Cab 60" CA): 7,000-lb. max. front springs, 19,500-lb. max. rear springs, 2" rear spacer blocks (4x2)
O	O	O	6.2L CNG/Propane Gaseous Engine Prep Package (F-350): hardened engine intake valves and valve seats, and bi-fuel manifold
O	O	O	16,000-LB. GVWR Package (F-450)
O	O	O	Aerial Lift/Severe Duty Prep Package ⁵ (F-550; Fleet only): additional frame reinforcements (recommended for vehicles that will permanently utilize aftermarket equipment such as aerial bucket lifts and heavy lift cranes)
O	O	O	Extra-Heavy-Duty Front-End Suspension Package ⁵ (optional on F-450/F-550; standard on F-600): upgraded front axle and 7,500-lb. front springs/GAWR rating
O	O	O	Extra-Heavy-Service Front Suspension Package ⁵ (F-350/F-450/F-550): front springs upgrade ⁶ (unless maximum springs have been computer-selected as included equipment)
O	O	O	Heavy-Service Front Suspension Package ⁵ (F-350/F-450/F-550) front springs upgrade ⁶ (unless maximum springs have been computer-selected as included equipment)
O	O	O	High-Capacity Trailer Tow Package ⁵ (F-450/F-550 diesel engine): trailer brake wiring kit, upgraded rear axle, and GCWR of 35,000 lbs. on F-450 and 40,000 lbs. on F-550 (trailer brake controller not included)
O	O	O	Low Deflection Package ⁵ (F-450/F-550/F-600): 2" spacer blocks (recommended for rear-biased loading)
O	O	O	Payload Downgrade Package ⁵ (F-350/F-450/F-550): 9,800-lb. GVWR and 26.5-gallon mid-ship fuel tank on F-350 SRW with 17" wheels; 10,000-lb. GVWR and 26.5-gallon mid-ship fuel tank on F-350 SRW with 18" wheels; 15,000-lb. GVWR on F-450; and 17,500-lb. GVWR on F-550
O	O	O	Payload Plus Upgrade Package ⁵ (F-550 with 4.88 rear axle): upgraded frame, upgraded rear axle, low-deflection/high-capacity rear springs, 14,706-lb. max. rear GAWR, and 19,500-lb. GVWR
O	O	O	Snow Plow Prep Package ⁵ (4x4): computer-selected front springs for snow plow application ⁸

AVAILABLE TRIM PACKAGES

XL

Power Equipment Group: accessory delay for power features; trailer tow mirrors with 2-way fold, power/heated glass, and heated manual spotter mirrors; Advanced Security Pack with SecuriLock Passive Anti-Theft System and inclination/intrusion sensors; power door locks; power windows with front one-touch-up/-down feature; upgraded door-trim panels; MyKey®; and Remote Keyless Entry System with 2 integrated keyhead transmitter remotes

XL Decor Group (Fleet only): bright center caps on wheels (SRW only), and chrome front bumper

XL Value Package: chrome front bumper, bright center caps on wheels (SRW only), and cruise control

XLT

XLT Value Package: SecuriCode keyless entry keypad, 8-way power driver's seat, and rear under-seat fold-flat storage (SuperCab/Crew Cab; Crew Cab storage is lockable and partitionable)

LARIAT

LARIAT Value Package: Remote Start System, heated and ventilated front seats, easy-entry/-exit driver's seat with memory, and memory feature for sideview mirrors and power-adjustable pedals



A



B



C



D



E



F



G



H



I



J



K



L

	XL	XLT	LARIAT™	
				S: STANDARD O: OPTIONAL
				F-350 SRW WHEELS/TIRES
S				A. 18" Argent-Painted Steel with Painted Center Cap
O		O		B. 17" Argent-Painted Steel with Painted Center Cap
			S	C. 18" Cast-Aluminum with Bright Center Cap
			S	D. 18" Bright-Machined Cast-Aluminum with Bright Center Cap
S	S	S		LT275/65Rx18E BSW all-season tires
O	O			LT245/ 75Rx17E BSW all-season tires ¹
O	O			LT245/ 75Rx17E BSW all-terrain tires ¹
O	O			LT265/ 70Rx17E OWL all-terrain tires ¹
O	O	O		LT275/ 70Rx18E BSW all-terrain tires (4x4)
	O	O		LT275/ 70Rx18E OWL all-terrain tires (4x4)
				F-350 DRW WHEELS/TIRES
S	S			E. 17" Argent-Painted Steel without Center Cap
O	O			F. 17" Stainless Steel Covers, Front and Rear ¹ (requires steel wheels)
O	O	S		G. 17" Polished Forged-Aluminum ² with Bright Center Cap
S	S	S		LT245/ 75Rx17E BSW all-season tires
O	O	O		LT245/ 75Rx17E BSW all-terrain tires
	O	O		LT245/ 75Rx17E OWL all-terrain tires (BSW rear inner tires)
				F-450/F-550 WHEELS/TIRES
S	S			H. 19.5" Argent-Painted Steel without Center Cap (19.5" x 6")
O	O			I. 19.5" Stainless Steel Covers, Front and Rear ¹ (requires steel wheels)
	O	S		J. 19.5" Polished Forged-Aluminum ² with Bright Center Cap
S	S	S		225/ 70Rx19.5G BSW all-position tires
O	O	O		225/ 70Rx19.5G BSW traction ¹ (includes 2 all-position tires on front and 4 traction tires on rear)
O	O	O		225/ 70Rx19.5G BSW traction (4x4; includes 2 traction tires on front and 4 traction tires on rear)
		O		225/ 70Rx19.5G BSW traction (Regular Cab 4x2; includes 2 all-position tires on front and 4 traction tires on rear)
				F-600 WHEELS/TIRES
S	S			K. 19.5" Argent-Painted Steel without Center Cap (19.5" x 6.75")
	O			L. 19.5" Polished Forged-Aluminum ² with Bright Center Cap (19.5" x 6.75")
S	S			245/ 70Rx19.5G BSW all-position tires
O	O			245/ 70Rx19.5G BSW traction tires (includes 2 all-position tires on front and 4 traction tires on rear)
O	O			245/ 70Rx19.5G BSW traction tires (includes 6 traction tires)

1. Restrictions may apply. See your dealer for details. 2. Inner rear wheels are steel.

EXTERIOR



Agate Black



Carbonized Gray



Antimatter Blue



Rapid Red Metallic Tinted Clearcoat¹



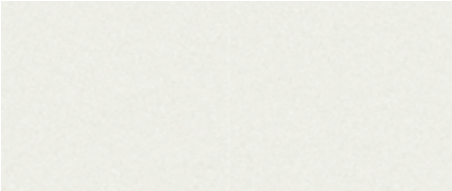
Iconic Silver



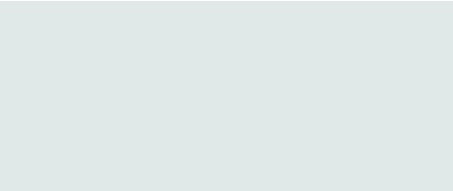
Race Red



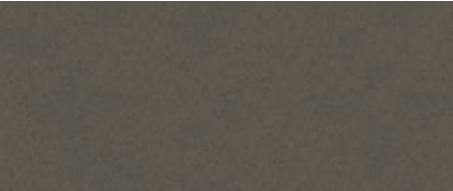
Velocity Blue



Star White Metallic Tri-coat¹



Oxford White



Stone Gray



Lithium Gray

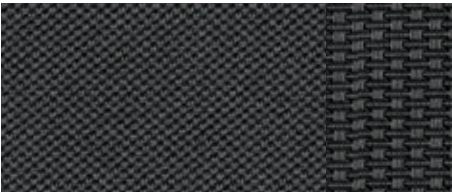
INTERIOR



1 Medium Earth Gray Vinyl **XL**



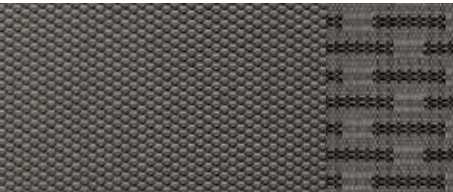
4 Medium Light Camel Cloth **XLT**



2 Dark Earth Gray Cloth **XL**



5 Black Leather **LARIAT**



3 Medium Earth Gray Cloth **XLT**



6 Medium Light Camel Leather **LARIAT**

	Agate Black Metallic	Iconic Silver Metallic	Oxford White	Carbonized Gray Metallic	Race Red	Stone Gray Metallic	Antimatter™ Blue Metallic	Velocity Blue Metallic	Lithium Gray Metallic	Rapid Red Metallic Tinted Clearcoat ¹	Star White Metallic Tri-coat ¹
XL	1 2	1 2	1 2	1 2	1 2	1 2	1 2				
XLT	3 4	3 4	3 4	3	3 4	3 4	3 4	3 4	4	3 4	
LARIAT™	5 6	5 6	5 6	5	5 6	5 6	5 6	5 6	5 6	5 6	5 6

Colors are representative only. See your dealer for actual paint/trim options. **1.** Additional charge.

DIMENSIONS/WEIGHTS

	REGULAR CAB													
	F-350 SRW 4x2/4x4	F-350 DRW ² 4x2/4x4	F-350 DRW ² 4x2/4x4	F-450 DRW 4x2/4x4	F-450 DRW 4x2/4x4	F-450 DRW 4x2/4x4	F-450 DRW 4x2/4x4	F-550 DRW 4x2/4x4	F-550 DRW 4x2/4x4	F-550 DRW 4x2/4x4	F-550 DRW 4x2/4x4	F-600 DRW 4x2/4x4	F-600 DRW 4x2/4x4	F-600 DRW 4x2/4x4
Wheelbase	145.3"	145.3"	169.3"	145.3"	169.3"	193.3"	205.3"	145.3"	169.3"	193.3"	205.3"	145.3"	169.3"	193.3"
Cab-to-axle	60"	60"	84"	60"	84"	108"	120"	60"	84"	108"	120"	60"	84"	108"
EXTERIOR (in.)														
Height														
Top of cab to ground	79.1/81.9	79.3/82.2	79.2/82.0	82.6/82.4	82.4/82.2	82.3	82.3	82.6	82.4	82.5/82.4	82.4	83.5/83.4	83.3/83.1	83.1/83.0
Top of frame to ground	32.7/34.9	33.0/34.8	32.7/34.4	35.4/35.5	35.0	34.8	34.8	35.4	35.0	34.8	34.7	34.8	34.5	33.4/33.5
Width between frame rails	34.1	34.1	34.1	34.2	34.2	34.2	34.2	34.2	34.2	34.2	34.2	34.2	34.2	34.2
Axle clearance	9.0/8.9	8.4/8.3	8.4	8.5	8.6	8.6	8.6	8.5	8.6	8.6	8.6	9.1	9.1	9.1
Front track	68.3	69.1	69.1	74.8	74.8	74.8	74.8	74.8	74.8	74.8	74.8	74.8	74.8	74.8
Rear tire outside width	79.6	92.2	92.2	93.9	93.9	93.9	93.9	93.9	93.9	93.9	93.9	95.2	95.2	95.2
Overall length	230.7	230.7	254.8	230.7	254.8	278.8	290.7	230.7	254.8	278.8	290.7	230.7	254.8	278.8
Weights (lbs.)														
Max. GVWR ³	11,000/11,500	14,000	14,000	16,500	16,500	16,500	16,500	19,000	19,500	19,500	19,500	22,000	22,000	22,000
Max. payload ³	4,870/4,860	7,940/7,550	7,900/7,500	9,850/9,540	9,790/9,450	9,610/9,300	9,550/9,230	12,310/12,000	12,750/12,410	12,570/12,260	12,510/12,190	15,090/14,780	15,020/14,690	14,840/14,540

	SUPERCAB™						CREW CAB					
	F-350 SRW 4x2/4x4	F-350 DRW² 4x2/4x4	F-450 DRW 4x2/4x4	F-450 DRW 4x2/4x4	F-550 DRW 4x2/4x4	F-550 DRW 4x2/4x4	F-350 SRW 4x2/4x4	F-350 DRW² 4x2/4x4	F-450 DRW 4x2/4x4	F-450 DRW 4x2/4x4	F-550 DRW 4x2/4x4	F-550 DRW 4x2/4x4
Wheelbase	167.9"	167.9"	167.9"	191.9"	167.9"	191.9"	179.8"	179.8"	179.8"	203.8"	179.8"	203.8"
Cab-to-axle	60"	60"	60"	84"	60"	84"	60"	60"	60"	84"	60"	84"
EXTERIOR (in.)												
Height												
Top of cab to ground	79.3/82.0	79.6/82.2	82.5	82.5/82.4	82.7/82.5	82.5	79.4/82.1	79.7/82.3	82.8/82.6	82.6/82.5	82.8	82.6
Top of frame to ground	32.3/34.2	32.6/34.4	35.0	34.8	34.9/35.0	34.8	32.1/34.0	32.5/34.3	34.8/34.9	34.7/34.8	34.8	34.8/34.7
Width between frame rails	34.1	34.1	34.2	34.2	34.2	34.2	34.1	34.1	34.2	34.2	34.2	34.2
Axle clearance	9.0	8.4	8.6	8.6	8.6	8.6	9.0/8.9	8.4	8.6	8.6	8.6	8.6
Front track	68.3	69.1	74.8	74.8	74.8	74.8	68.3	69.1	74.8	74.8	74.8	74.8
Rear tire outside width	79.6	92.2	93.9	93.9	93.9	93.9	79.6	92.2	93.9	93.9	93.9	93.9
Overall length	253.3	253.3	253.3	277.4	253.3	277.4	265.2	265.2	265.2	289.2	265.2	289.2
Weights (lbs.)												
Max. GVWR³	11,500	14,000	16,500	16,500	19,500	19,500	11,500	14,000	16,500	16,500	19,500	19,500
Max. payload³	4,970/ 4,940	7,600/ 7,200	9,550/ 9,190	9,360/ 9,030	12,510/ 12,150	12,320/ 11,990	4,830/ 4,820	7,460/ 7,040	9,380/ 9,070	9,230/ 8,940	12,340/ 12,030	12,190/ 11,900

INTERIOR (in.; front/rear)	REGULAR CAB	SUPERCAB	CREW CAB
Head room	40.8/—	40.8/40.3	40.8/40.4
Leg room (max.)	43.9/—	43.9/33.5	43.9/43.6
Hip room	62.5/—	62.5/64.7	62.5/64.7
Shoulder room	66.7/—	66.7/65.8	66.7/65.9
Total passenger volume (cu. ft.)	64.6	116.0	131.8
Cargo volume behind 1st row (cu. ft.)	11.6	31.6	52.1

SRW = Single Rear Wheel DRW = Dual Rear Wheel GVWR = Gross Vehicle Weight Rating
2. F-350 DRW with diesel engine and available Ambulance Prep Package with wide-track rear axle: rear tire outside width is 95.2" **3.** When properly configured.

5TH - WHEEL / GOOSENECK TOWING

GCWR & Maximum Loaded Trailer Weight Ratings (lbs.)¹ – SAE J2807 Compliant

Engine	Axle Ratio	GCWR	F-350 SRW 4x2	F-350 SRW 4x4	F-350 DRW 4x2	F-350 DRW 4x4	F-450 DRW 4x2	F-450 DRW 4x4	F-550 DRW 4x2	F-550 DRW 4x4	F-600 DRW 4x2	F-600 DRW 4x4
REGULAR CAB												
6.2L 2-valve Gas V8 FFV	3.73	19,500	13,100	12,700								
		20,000			13,000	12,600						
	4.30	23,000	16,600	16,200								
23,500				16,500	16,100							
7.3L 2-valve Gas V8	3.73	22,500			15,500	15,100						
	4.30	26,000	19,600	19,200	19,000	18,600						
	4.88	28,000					20,400	20,100	20,400	20,100		
30,000										22,200	21,900	
6.7L Diesel V8	3.73	30,000	22,700	22,200								
		31,500			23,700	23,300						
	4.10	32,500			24,700	24,300	24,100	23,800	24,100	23,800		
	4.30	35,000					26,600	26,300				
		37,000							28,600	28,300		
	4.88	32,500 ²							24,100 ²	23,800 ²		
		40,000 ²							31,600 ²	31,300 ²		
43,000										34,500	34,200	
SUPERCAB™												
6.2L 2-valve Gas V8 FFV	3.73	19,500	12,800	12,400								
		20,000			12,600	12,200						
	4.30	23,000	16,300	15,900								
23,500				16,100	15,700							
7.3L 2-valve Gas V8	3.73	22,500			15,100	14,700						
	4.30	26,000	19,300	18,800	18,600	18,200						
	4.88	28,000					20,100	19,700	20,100	19,700		
6.7L Diesel V8	3.73	30,000	22,300	21,900								
		31,500			23,400	23,000						
	4.10	32,500			24,400	24,000	23,800	23,500	23,800	23,500		
	4.30	35,000					26,300	26,000				
		37,000							28,300	28,000		
	4.88	32,500 ²							23,800 ²	23,400 ²		
40,000 ²								31,300 ²	30,900 ²			
CREW CAB												
6.2L 2-valve Gas V8 FFV	3.73	19,500	12,600	12,200								
		20,000			12,500	12,100						
	4.30	23,000	16,100	15,700								
23,500				16,000	15,600							
7.3L 2-valve Gas V8	3.73	22,500			15,000	14,600						
	4.30	26,000	19,100	18,500	18,500	18,100						
	4.88	28,000					19,900	19,600	19,900	19,600		
6.7L Diesel V8	3.73	30,000	22,100	21,300								
		31,500			23,200	22,800						
	4.10	32,500			24,200	23,800	23,700	23,400	23,700	23,400		
	4.30	35,000					26,200	25,900				
		37,000							28,200	27,900		
4.88	32,500 ²							23,600 ²	23,300 ²			
40,000 ²								31,100 ²	30,800 ²			

5th-Wheel Towing Notes: Trailer weights shown assume 400 lbs.–800 lbs. second-unit body weight. Be sure combined weight of vehicle and trailer does not exceed listed GCWR. Trailer tongue (trailer king pin for 5th-wheel towing) load weight should be 10% (15% for 5th-wheel towing) of total loaded trailer weight. Make sure that the vehicle payload (reduced by option weight) will accommodate trailer tongue (trailer king pin for 5th-wheel towing) load weight and the weight of passengers and cargo added to the towing vehicle. The addition of trailer tongue (trailer king pin for 5th-wheel towing) load weight, and the weight of passengers and cargo, cannot cause vehicle weights to exceed the rear GAWR (Gross Axle Weight Rating) or GVWR (Gross Vehicle Weight Rating). These ratings can be found on the vehicle’s Safety Compliance Certification Label. See your Ford Dealer for conventional trailer weights.

ENGINES

	6.2L 2-Valve Gas V8 FFV	7.3L 2-Valve Gas V8	6.7L Power Stroke® V8 Turbo Diesel
Configuration	SOHC	OHV	OHV (32-valve)
Compression ratio	9.8:1	10.5:1	15.8:1
Horsepower @ rpm	385 @ 5,750³	350 @ 3,900	330 @ 2,600
Torque lb.-ft. @ rpm	430 @ 3,800³	468 @ 3,900	825 @ 2,000
Recommended fuel	Regular unleaded or E85	Regular unleaded	Ultra-low sulfur diesel or B20 (containing 20% or less biodiesel)
PTO provision availability	Available	Available	Standard

STANDARD GROSS AXLE WEIGHT RATINGS (GAWR)⁴ (lbs.)

	Max. Front	Max. Rear
F-350 SRW 4x2	5,250	7,230
F-350 SRW 4x4	5,600	7,230
F-350 DRW 4x2	5,250	10,040
F-350 DRW 4x4	5,600	10,040
F-450 DRW	6,500	12,880
F-550 DRW	7,000	14,706
F-600 DRW	7,500	15,500

MECHANICAL

Shock Absorbers	1.38" gas type	
Brakes	Rotor diameter (in.; front/rear)	Lining area (sq. in.; front/rear)
F-350	14.29/14.29	50.9/39.6
F-450/F-550/F-600	15.39/15.75	68.8/64.8
Wheels	Number of studs	Bolt-circle diameter (in.)
F-350 SRW	8	6.69 (170-mm)
F-350 DRW	8	7.87 (200-mm)
F-450/F-550/F-600	10	8.85 (225-mm)

REAR AXLES

	Engine	Standard	Available
F-350 SRW	6.2L Gas	3.73 non-limited-slip	3.73 electronic-locking
	7.3L Gas	4.30 electronic-locking	
	6.7L Diesel	3.73 non-limited-slip	3.73 electronic-locking
F-350 DRW	6.2L Gas	3.73 non-limited-slip	4.30 limited-slip
	7.3L Gas	3.73 non-limited-slip	4.30 limited-slip
	6.7L Diesel	3.73 non-limited-slip	4.10 limited-slip
F-450 DRW	7.3L Gas	4.88 non-limited-slip	4.88 limited-slip
	6.7L Diesel	4.10 non-limited-slip	4.10 limited-slip
F-550 DRW	7.3L Gas	4.88 non-limited-slip	4.88 limited-slip
	6.7L Diesel	4.10 non-limited-slip	4.10 limited-slip
			4.30 limited-slip⁵
F-600 DRW	7.3L Gas	4.88 limited-slip	
	6.7L Diesel	4.88 limited-slip	

ALTERNATORS

	Engine	Standard	Available
XL/XLT	6.2L Gas	200-amp	240-amp
	7.3L Gas	240-amp	397-amp
	6.7L Diesel	240-amp	332-amp
LARIAT™	6.2L Gas	240-amp	
	7.3L Gas	397-amp	
	6.7L Diesel	332-amp	397-amp

FRAMES

Number of Crossmembers
7 (145.3" WB)
8 (167.9" WB, 169.3" WB, 179.8" WB)
9 (191.9" WB, 203.8" WB, 193.3" WB)
10 (205.3" WB)
Max. Side Rail Section⁶ (height x width x thickness)
7.50" x 2.74" x 0.28" (F-350)
7.50" x 2.74" x 0.32" (F-450/F-550 145.3" WB, 169.3" WB, 167.9" WB, 179.8" WB, 203.8" WB)
7.50" x 2.74" x 0.60" (F-450/F-550 191.9" WB, 193.3" WB, 205.3" WB; F-550 with the Payload Plus Upgrade Package; F-600)

Section Modulus⁷
12.7 cu. in.
Frame Rail Yield Strength
50,000 psi

SRW = Single Rear Wheel DRW = Dual Rear Wheel GCWR = Gross Combination Weight Rating WB = Wheelbase

1. F-350 DRW/F-450/F-550 weights shown are for 145.3" wheelbase Regular Cab, 167.9" wheelbase SuperCab or 179.8" wheelbase Crew Cab models. For 169.3," 191.9," 193.3," 203.8" and 205.3" wheelbase models, weights may be somewhat less (usually not more than 200 lbs., or 400 lbs. with 205.3" wheelbase). **2.** Requires available High-Capacity Trailer Tow Package. **3.** Certified to SAE J1349. **4.** Rating shown does not include additional suspension upgrade packages. See your dealer for ratings for vehicles with suspension upgrade packages. **5.** Restrictions may apply. See your dealer for details. **6.** Measured to inside of metal. **7.** Cross-sectional modulus calculated at back of cab.



110V/400W AC POWER OUTLET ON CENTER CONSOLE REAR (SuperCab™/Crew Cab) Standard on LARIAT™; Available on XLT



LED WARNING STROBES¹
Available on ALL TRIMS



FLOOR LINERS
Available on XLT and LARIAT
(SuperCab/Crew Cab)



REAR VIEW CAMERA AND PREP KIT
Available on ALL TRIMS

New Vehicle Limited Warranty. We want your Ford F-Series Super Duty® truck ownership experience to be the best it can be. Under this warranty, your new vehicle comes with 3-year/36,000-mile bumper-to-bumper coverage, 5-year/60,000-mile Powertrain Warranty coverage, 5-year/60,000-mile safety restraint coverage, and 5-year/unlimited-mile corrosion coverage – all with no deductible. The Ford 6.7L Power Stroke® diesel engine gets 5-year/100,000-mile warranty coverage. Please ask your Ford Dealer for a copy of this limited warranty.

Ford Credit® Get the ride you want. Whether you plan to lease or buy, Ford Credit has the option that's right for you. Ask your Ford Dealer for details or visit us online at ford.com/finance.

Roadside Assistance. Covers your vehicle for 5 years or 60,000 miles, so you have the security of knowing that help may be only a phone call away should you run out of fuel, lock yourself out of the vehicle or need a winch back to a paved road, a battery jump start or towing. Your Ford Dealer can provide complete details on all of these advantages.

Ford Protect™ Extended Service Plans. Whether you purchase or lease your Ford vehicle, insist on genuine Ford Protect extended service plans. Ford Protect has a variety of plans to give you peace-of-mind protection whether you want vehicle component or maintenance coverage. Plus, they are fully backed by Ford and honored at all Ford dealerships in the U.S., Canada and Mexico. When you visit your dealer, insist on genuine Ford Protect extended service plans.

Ford Insure. Insurance that lets you earn discounts for safe driving, offering a maximum discount of 40% off your auto insurance. Ford Insure works with your 2021 Super Duty to gauge driving habits and calculate a discount based on how you drive. Visit www.fordinsure.com to learn more.

American Road Services Company LLC is the licensed insurance agency offering Ford Insure and is underwritten by Nationwide Mutual Insurance Company and affiliates. Home Office: Columbus, OH. Ford Motor and Ford Credit are not insurance companies or agents. Subject to underwriting guidelines, review and approval. Details and availability varies; program criteria differ in California. Discounts do not apply to all coverage elements; actual savings vary by state, coverage selections, rating factors and policy changes.

Ford Original Accessories. They're warranted for whichever provides you the greatest benefit: 24 months/unlimited mileage, or the remainder of your Bumper-to-Bumper 3-year/36,000-mile New Vehicle Limited Warranty.

Ford Licensed Accessories (FLA) are warranted by the accessory manufacturer's warranty. FLA are designed and developed by the accessory manufacturer and have not been designed or tested to Ford Motor Company engineering requirements. Contact your Ford Dealer for details and/or a copy of all limited warranties.

BACKED BY 600+ FORD COMMERCIAL VEHICLE CENTERS.



There's a standard of excellence at your local Ford Commercial Vehicle Center dealer, where our certified experts are focused on offering an exceptional sales, service and finance experience. After helping you spec your Chassis Cab truck, our knowledgeable staff will help ensure it's built to your requirements. We can also recommend finance solutions and help maximize your “up-time” after the sale with prompt, specialized service. You'll find extended hours and service discounts at our Service and Parts Department, along with a Parts Advantage program that helps us keep the fastest-moving fleet parts in your area in stock.

Learn more at www.fordcommercialvehiclecenter.com.

YOUR BUSINESS. YOUR EDGE.

To get help optimizing your fleet, choose available Ford Telematics™ fleet management software from Ford. From each journey, fleet vehicles produce informative data. Driven through Ford Telematics, this data helps you optimize your fleet by understanding where your vehicles go, how they're used and how they're running – giving you time to focus on the rest of your business. You can also use available Ford Data Services™ to access vehicle data with other fleet systems or telematics service providers. Either way, we'll help get you the data you need.

Learn more at www.commercialsolutions.ford.com.

1. Ford Licensed Accessory.

Ford and Oval Device, 911 Assist, Active Motion, AdvanceTrac, Antimatter, AppLink, BLIS, Built Ford Proud, Built Ford Tough, F-Series, Ford Co-Pilot360, Ford Credit, Ford Data Services, Ford Protect, Ford Telematics, FordPass, Intelligent Oil-Life Monitor, LARIAT, MyKey, Power Stroke, PowerScope, Roll Stability Control, RSC, Safety Canopy, SecuriCode, SecuriLock, SelectShift, SOS Post-Crash Alert System, Super Duty, SuperCab, SYNC, TorqShift, and related marks are trademarks of Ford Motor Company.

Apple, Apple CarPlay and iPhone are trademarks of Apple Inc., registered in the U.S. and other countries. BANG & OLUFSEN and B&O are registered trademarks of Bang & Olufsen Group. Licensed by Harman Becker Automotive Systems Manufacturing Kft. All rights reserved. Google, Android, Android Auto and Google Play are trademarks of Google LLC. Requires the Android Auto app on Google Play and an Android compatible smartphone running Android™ 5.0 or higher. HD Radio is a proprietary trademark of iBiquity Digital Corporation. SiriusXM and all related marks and logos are trademarks of Sirius XM Radio Inc.

Comparisons based on competitive models (Class 3–5 Chassis Cabs for F-350/F-450/F-550; Class 6–7 Chassis Cabs for F-600), publicly available information and Ford certification data at time of release. Vehicles may be shown with optional and aftermarket upfit equipment. Features may be offered only in combination with other options or subject to additional ordering requirements/limitations. Dimensions and capacity ratings shown may vary due to optional features and/or production variability. Information is provided on an “as is” basis and could include technical, typographical or other errors. Ford makes no warranties, representations, or guarantees of any kind, express or implied, including but not limited to, accuracy, currency, or completeness, the operation of the information, materials, content, availability, and products. Ford reserves the right to change product specifications, pricing and equipment at any time without incurring obligations. Your Ford Dealer is the best source of the most up-to-date information on Ford vehicles. Body manufacturers are responsible for compliance certification of the completed vehicle. The Ford New Vehicle Limited Warranty and any government certification made by Ford shall cover only the vehicle as manufactured by Ford and shall not extend to any addition, modification or change of or to the vehicle by the Ford Authorized Pool Account.