



INTRODUCING THE ALL-NEW **2020 ESCAPE**

PACKAGING GUIDE



Preproduction models shown throughout. Available Fall 2019.
Ford Escape Plug-in Hybrid available Spring 2020.

The Flexible, Fun-to-Drive, Sophisticated Utility Vehicle

The All-New 2020 Ford Escape is designed and built to go beyond expectations. With completely new styling and smart technology, Escape will ride confidently and capably into the ultra-competitive Small Utilities segment. Escape promises flexibility, smart driver-assist technology and vibrant design in five distinct trim levels. Additionally, the available Escape hybrid powertrain offers a seamless integration of electric and gas-powered performance. Ultimately, the 2020 Ford Escape enables the customer the freedom of choice.

2020 ESCAPE HIGHLIGHTS

- All-new exterior design
- All-new platform with increased capability
- All-new available hybrid powertrain system
- Five available models: S, SE, SE Sport, SEL, Titanium
- Standard suite of Ford Co-Pilot360™ technologies
- All-wheel drive is now available on all models — Including Escape S
- Flexible interior with sliding second-row seats — up to 6" of travel forward or rearward
- FordPass Connect™ with 4G LTE Wi-Fi hotspot is now standard on all models
- Available 12.3" digital instrument cluster



NEW TO ESCAPE FOR 2020

- 1.5L EcoBoost® I-3 engine with cylinder deactivation technology
- 2.5L iVCT Atkinson-cycle I-4 Hybrid powertrain
- 8-speed automatic transmission
- Plug-in-Hybrid powertrain coming Spring 2020
- Rotary gear shift dial
- SE Sport model
- Selectable drive modes
- Sliding second-row seats
- **12.3" digital instrument cluster**
- **B&O Sound System by Bang & Olufsen with 10 speakers with subwoofer**
- **Head-up display**
- **LED headlamps and foglamps**

New Driver-Assist Features

- Post-Collision Braking
- Pre-Collision Assist with Automatic Emergency Braking (AEB) (includes Pedestrian Detection, Forward Collision Warning with Dynamic Brake Support)
- **Active Park Assist 2.0**
- **Adaptive Cruise Control with Stop-and-Go and Lane Centering**
- **Evasive Steering Assist**

BANG & OLUFSEN® 2019 and B&O® 2019. BANG & OLUFSEN™ and B&O™ are registered trademarks of Bang & Olufsen Group.

Licensed by Harman Becker Automotive Systems Manufacturing Kft. All rights reserved.

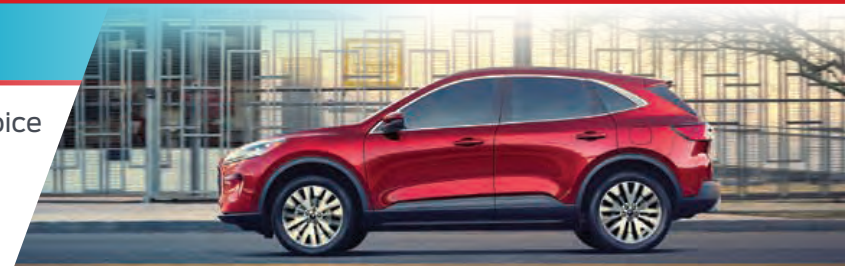
• **BOLD TYPE** = Available feature.

PERFORMANCE AND CAPABILITY

Escape delivers the strength and capability to meet customers' adventurous needs. A choice of powertrains, available all-wheel drive and the ability to tow is the flexibility that makes many so passionate about Escape.

Powertrain Availability

Models and Powertrains	S	SE	SE ^{NEW} SPORT	SEL	TITANIUM
NEW 1.5L EcoBoost I-3	Standard	Standard	—	Standard	—
2.0L EcoBoost I-4 (AWD)	—	—	—	Available	Available
NEW 2.5L Hybrid	—	—	Standard	—	Standard
Front-Wheel Drive (FWD)	Standard	Standard	Standard	Standard with 1.5L	Standard
All-Wheel Drive (AWD)	Available	Available	Available	Available with 1.5L Standard with 2.0L	Available with Hybrid Standard with 2.0L

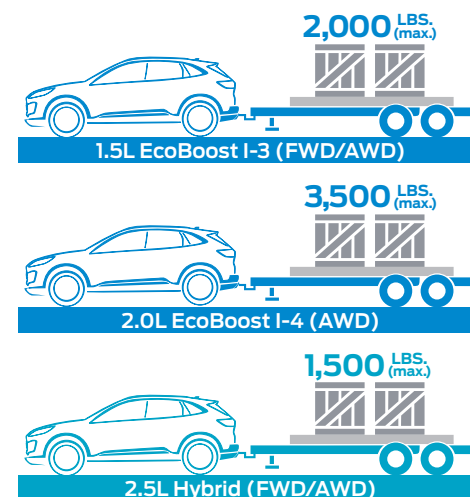


Escape by the Numbers⁽¹⁾

1.5L EcoBoost I-3	2.0L EcoBoost I-4	2.5L Hybrid
180 horsepower	250 ⁽²⁾ horsepower	198 total system horsepower
177 lb.-ft. of torque	275 ⁽²⁾ lb.-ft. of torque	

(1) All figures shown are Ford projected.

(2) Horsepower and torque ratings based on premium fuel per SAE J1349 standard. Results may vary.




The Smartest Escape Ever



SMART TECHNOLOGY

Escape owners can drive with a greater sense of confidence knowing this impressive suite of technology features will help take stress out of the daily commute.

Ford Co-Pilot360™	Ford Co-Pilot360™ Assist	Ford Co-Pilot360™ Assist+
Standard on all models and includes:	Available on SE and SEL and adds:	Standard on Titanium and adds:
<ul style="list-style-type: none"> • Auto High-Beam Headlamps • BLIS® (Blind Spot Information System) with Cross-Traffic Alert • Lane-Keeping System (Lane-Keeping Assist, Lane-Keeping Alert and Driver Alert) • Pre-Collision Assist with Automatic Emergency Braking (AEB) (includes Pedestrian Detection, Forward Collision Warning with Dynamic Brake Support) • Rear View Camera 	<ul style="list-style-type: none"> • Adaptive Cruise Control with Stop-and-Go (includes Evasive Steering Assist) • Voice-Activated Touchscreen Navigation System 	<ul style="list-style-type: none"> • Adaptive Cruise Control with Stop-and-Go and Lane Centering • Class-exclusive Evasive Steering Assist⁽¹⁾ • Voice-Activated Touchscreen Navigation System

(1) Class is Small Utilities based on Ford segmentation.

(2) FordPass Connect, an optional feature on select vehicles, is required for certain remote features, and requires the FordPass App and FordPass Connect service (see App Terms for details). Service for 2020 and later model year vehicles includes a complimentary 1-year trial for remote features, excluding Wi-Fi hotspot, and starts with vehicle sales date (after which, fees apply). Connected service and related feature functionality is subject to compatible AT&T network availability. Evolving technology/cellular networks may affect functionality and availability, or continued provision of some features, prohibiting them from functioning. Certain restrictions, 3rd-party terms or message/data rates may apply.

More Technology Highlights

- FordPass Connect™⁽²⁾ features:
 - 4G LTE Wi-Fi hotspot that can handle up to 10 devices, up to 50 ft. from the vehicle
 - Remote start, lock/unlock
 - Schedule a time to remote start
- Selectable drive modes include:

– Normal	– Sport	– Snow/Sand
– Eco	– Slippery	
- SYNC® 3
 - 8" LCD center-stack touchscreen
 - Apple CarPlay™ and Android Auto™ compatibility
 - Included on SE and above
- **Class-exclusive available Active Park Assist 2.0⁽¹⁾**
- Reverse Sensing System with SEL and Titanium
- Head-up display available on Titanium

Apple CarPlay is a trademark of Apple Inc., registered in the U.S. and other countries. Android Auto is a trademark of Google Inc.

NEW, NO-COMPROMISE HYBRID MODELS

Escape SE Sport and Titanium models come standard with the Ford-designed, innovative fourth-generation hybrid system. When we say no compromises, that means the electric system blends into the architecture and doesn't intrude on usable cargo or passenger space.

Hybrid Feature Highlights

- All-new 2.5L iVCT Atkinson-cycle I-4 Hybrid powertrain pairs the gas engine with a battery-driven electric motor
 - Standard on SE Sport and Titanium
 - Ford projected total system 198 horsepower rating
 - Ford projected top speed of 85 mph in electric-only mode
 - Includes 1.1-kWh lithium ion-battery
 - Ford Escape Hybrid with FWD is targeting a best-in-class EPA-estimated range of more than 550 miles⁽¹⁾
 - The battery-driven electric motor provides added torque delivery
 - New electronically controlled continuously variable transmission (eCVT)
- FWD or available AWD
- Pedestrian Alert Sounder
- Capable of towing up to 1,500 lbs.

(1) Actual range will vary. Final EPA-estimated ratings available later in the 2019 calendar year. Class is Small Utility over 4480 mm length based on Ford segmentation.



All-new Escape Plug-in Hybrid

Coming Spring 2020!

- Available on SE, SEL and Titanium
- Escape Plug-in Hybrid Electric Vehicle (PHEV), as the name suggests, will have a rechargeable 14.4 kWh lithium-ion battery that powers an electric motor
- Gas-powered 2.5L iVCT Atkinson-cycle I-4 engine
- Escape Plug-in Hybrid is projected to have a best-in-class EPA-estimated range of at least 30 miles in electric-only mode⁽¹⁾
- The gas engine automatically and seamlessly turns on when the electric charge runs out or when the driver potentially needs more power
- eCVT transmission in this Escape model is engineered specifically for the hybrid system

Plug-in Hybrid Drive Modes

The driver can choose from four drive modes:

- **Auto EV mode** — vehicle decides whether to run on gas or electric power
- **EV Now mode** — drivers can operate on all-electric driving
- **EV Later mode** — drivers can switch to full gas-powered driving to conserve electric miles for later
- **All-new EV Charge mode** — drivers can continue to charge the battery while driving and generate electric-only miles to use later

2020 Escape Model Lineup

ESCAPE **S** Standard Equipment (100A)

Performance and Handling

- Active Grille Shutter System
- Battery saver
- Brakes
 - Four-wheel disc brakes with Anti-Lock Brake System (ABS)
 - Auto Hold
 - Parking brake, electric
- Intelligent Oil-Life Monitor®
- Powertrain
 - 1.5L EcoBoost® engine with Auto Start-Stop Technology and cylinder deactivation
 - 8-speed automatic transmission
 - Front-wheel drive (FWD)
- Selectable Drive Modes
- Steering
 - Electric Power-Assisted Steering (EPAS) with pull-drift compensation and active nibble control
 - Variable-assist rack-and-pinion
- Suspension, fully independent
 - Front and rear stabilizer bars
- Tires
 - 225/65R17 all-season
 - Mini-spare (aluminum)
- Torque Vectoring Control
- Towing Pre-Pack
- Transmission oil cooler

Exterior

- Antenna — roof mounted
- Badging — “ESCAPE” on liftgate
- Black
 - Beltline molding
 - Door handles
 - Grille
 - Lower bodyside cladding
 - Rocker panel
 - Mirror caps
 - Upper window moldings
- Bumpers/fascia — body-color upper/molded-in-color lower
- Door locks, power — autolock/autounlock
- Easy Fuel® capless fuel filler
- Exhaust tips, dual — chrome
- LED taillamps
- Manual liftgate with body-color handle
- Mirrors, sideview — power glass, manual-folding
- Rear spoiler — body-color
- Remote Keyless Entry System — flip key with integrated key fob
- Roof rack — provisions for roof side rails mounting (blank plugs)
- Skid plates — molded-in-color silver, front and rear
- Wheels — 17" steel with Sparkle Silver-painted covers
- Windshield wipers
 - Variable-intermittent/continuous
 - Rear window wiper — fixed-intermittent/continuous

Interior

- Audio/entertainment
 - AM/FM stereo
 - Six speakers
 - Speed-compensated volume
 - USB media hub
- Charging
 - 12-volt powerpoints (3) — front row, 2nd row and cargo area
 - Two (2) smart-charging USB ports
- Climate control
 - Cabin particulate air filter
 - Manual single zone
- Compass
- Cupholders — six (6)
- Floor mats — carpeted front and rear
- Footrest — driver's side
- Grab handles — front passenger, 2nd-row (2) include coat hooks
- Hooks (4) — cargo tie-down, two (2) and grocery, two (2)
- Instrument cluster
 - 4.2" screen
 - EcoMode
 - Ice Blue® Lighting
 - Message center
 - Outside temperature display
 - Trip computer
- Lighting
 - 2nd-row dome
 - Front map lights
 - Illuminated entry system with courtesy lamp delay
 - Rear cargo area

Interior (continued)

- Rotary gear shift dial
- Seating, cloth bucket
 - Five-passenger
 - 6-way manual driver/4-way manual front passenger
 - 2nd-row 60/40 split-fold-flat and sliding
- Steering column — manual tilt/telescoping
- Steering wheel
 - Urethane
 - Cruise controls and redundant audio controls
- Storage
 - Front-row center console armrest
 - Glove box
 - Media bins, two (2)
 - Overhead console
 - Sunglasses storage
- Visor vanity mirrors (driver and front passenger)
- Windows, power — front one-touch-up/-down feature (driver only)

Optional Equipment

- 17" Shadow Silver-painted aluminum wheels (64U)
- All-wheel drive (AWD) (U9F)
- Engine block heater (41H)
- Front license plate bracket (153)

Technology

- Auto High-Beam Headlamps (included with Ford Co-Pilot360™)
- BLIS® (Blind Spot Information System) with Cross-Traffic Alert (included with Ford Co-Pilot360)
- Lane-Keeping System with Driver Alert (included with Ford Co-Pilot360)
- FordPass Connect™ 4G LTE modem with Wi-Fi hotspot connection for up to 10 devices
- Post-Collision Braking
- Pre-Collision Assist with Automatic Emergency Braking (AEB), Pedestrian Detection, Forward Collision Warning and Dynamic Brake Support (included with Ford Co-Pilot360)
- Rear View Camera (included with Ford Co-Pilot360)
- SYNC® with 4.2" center-stack LCD screen

Safety and Security

- AdvanceTrac® with RSC® (Roll Stability Control™)
- Airbags
 - Driver and front-row passenger dual-stage
 - Driver knee
 - Front-seat mounted side-impact
 - Safety Canopy® System — side-curtain airbags with rollover sensor
- Belt-Minder®
- Center high-mounted stop lamp (CHMSL)
- Child-safety locks — rear doors
- Curve Control
- Day/night rearview mirror — manually adjustable
- Defroster, electric rear window
- Headlamps
 - Automatic ON/OFF
 - Configurable daytime running lamps
 - Courtesy delay
 - Halogen reflector
 - Wiper-activated

Safety and Security (continued)

- Head restraints
 - 2-way manually adjustable front
 - 2-way manually adjustable outboard rear with fixed center head
- LATCH (Lower Anchors and Tether Anchors for Children) on rear outboard seat positions
- MyKey®
- Personal Safety System™
- Safety belts
 - Height adjustable front row with pretensioners/Energy Management System
 - Three-point safety belts on all five seating positions
- SecuriLock® Passive Anti-Theft System
- SOS Post-Crash Alert System™
- Tire Pressure Monitoring System (TPMS)
- Traction control

Wheels



17" steel wheels with Sparkle Silver-painted covers
Standard



17" Shadow Silver-painted aluminum wheels
Optional (64U)

Ford Co-Pilot360

- Auto High-Beam Headlamps
- BLIS (Blind Spot Information System) with Cross-Traffic Alert
- Lane-Keeping System (includes Lane-Keeping Assist, Lane-Keeping Alert and Driver Alert)
- Pre-Collision Assist with Automatic Emergency Braking (AEB), Pedestrian Detection, Forward Collision Warning and Dynamic Brake Support
- Rear View Camera



2020 Escape Model Lineup

ESCAPE **SE** Standard Equipment (200A)

Includes all Escape S Standard Equipment, Plus:

Exterior

- Chrome upper window molding with black beltline molding
- Door handles — body-color
- Grille — chrome surround
- Keyless keysets — passive keys, two (2)
- Mirrors, sideview
 - Power/heated glass
- Mirror caps — body-color
- Privacy glass — 2nd-row side and liftgate
- SecuriCode™ keyless entry keypad
- Wheels — 17" Shadow Silver-painted aluminum

Interior

- Audio/entertainment
 - SiriusXM® Radio
- Climate control
 - Electronic automatic temperature control with rear air duct
- Intelligent Access with push-button start
- Seats
 - Unique cloth
 - 10-way power driver's seat (includes power lumbar and power recline)
 - Heated front row
 - Rear center armrest (fold-down with two [2] cupholders)
 - Map pocket — front-passenger seat back
- Sliding sun visors with illuminated vanity mirrors (driver and front passenger)

Technology

- SYNC® 3
 - 8" LCD center-stack touchscreen
 - Apple CarPlay™ and Android Auto™ compatibility

Ford Co-Pilot360™ Assist (68B)

- Adaptive Cruise Control with Stop-and-Go
- Voice-Activated Touchscreen Navigation System

NOTE: Evasive Steering Assist is included with Adaptive Cruise Control with Stop-and-Go.

Apple CarPlay is a trademark of Apple Inc., registered in the U.S. and other countries. Android Auto is a trademark of Google Inc.

Sirius, XM and all related marks and logos are trademarks of Sirius XM Radio Inc.

SE Wheel



17" Shadow Silver-painted aluminum wheels
Standard

Safety and Security

- Headlamps
 - Halogen projector
 - LED signature lighting (replaces configurable daytime running lamps)

Optional Equipment

- All-wheel drive (AWD) (U9G)
- Engine block heater (41H)
- Ford Co-Pilot360 Assist (68B)
- Front license plate bracket (153)
- Panoramic Vista Roof® with power open/close and sunshade (43M)
- Rapid Red Metallic Tinted Clearcoat (D4)
- Star White Metallic Tri-coat (AZ)



ESCAPE SE SPORT

Standard Equipment (201A)
Includes all Escape SE Standard Equipment, Plus:

Performance and Handling

- Powertrain
 - 2.5L iVCT Atkinson-cycle I-4 Hybrid engine
 - eCVT transmission

Exterior

- Black
 - Beltline molding
 - Grille surround
 - Mirror caps
 - Upper window molding
- Pedestrian Alert Sounder
- Tire inflator and sealant kit (replaces mini-spare)
- Wheels — 17" Ebony Black-painted aluminum

Interior

- 12.3" digital instrument cluster
- Electric fuel door release
- Leather-wrapped steering wheel

SE Sport Premium Package with Ford Co-Pilot360™ Assist (68C)

- **Ford Co-Pilot360 Assist**
 - Adaptive Cruise Control with Stop-and-Go
 - Voice-Activated Touchscreen Navigation System
- 19" machined-face aluminum wheels with Ebony-painted pockets and P225/55R19 all-season tires
- ActiveX Seating Material
- Panoramic Vista Roof with power open/close and sunshade
- Power liftgate
- Remote Start System

NOTE: Evasive Steering Assist is included with Adaptive Cruise Control with Stop-and-Go.

Optional Equipment

- All-wheel drive (AWD) (U9B)
- Aluminum mini space-saver wheel (51Q)
- Engine block heater (41H)
- Front license plate bracket (153)
- Rapid Red Metallic Tinted Clearcoat (D4)
- Star White Metallic Tri-coat (AZ)

SE Sport Wheels



17" Ebony Black-painted aluminum wheels
Included with SE Sport (201A)



19" machined-face aluminum wheels with Ebony-painted pockets
Included with SE Sport Premium Package (68C)



ESCAPE **SEL**

Standard Equipment (301A)

Includes all Escape SE Standard Equipment, Plus:

Performance and Handling

- Powertrain
 - 1.5L EcoBoost® engine with Auto Start-Stop Technology

Exterior

- Badging — “SEL” on liftgate
- Fog lamps
- Hands-free, foot-activated liftgate
- Roof-rack side rails — black
- Tires — 225/60R18 all-season
- Wheels — 18" machined-face aluminum with Dark Stainless-painted pockets

Interior

- Memory Package: driver's seat and exterior sideview mirrors
- Seats
 - Sport contour buckets
 - ActiveX Seating Material
- Steering wheel — heated and leather-wrapped
- Windows, power — one-touch-up/-down front and rear

Technology

- Remote Start System
- Reverse Sensing System

Optional Equipment

- 1.5L EcoBoost engine with AWD (996/448)
- 2.0L EcoBoost engine with Auto Start-Stop Technology and SelectShift® with paddle shifters on steering wheel (999/448)
 - Includes AWD, Class II Trailer Tow Pkg. and 19" machined-face aluminum wheels with Ebony-painted pockets (64H)
- Engine block heater (41H)
- Ford Co-Pilot360™ Assist (68B)
- Front license plate bracket (153)
- Panoramic Vista Roof® with power open/close and sunshade (43M)
- Rapid Red Metallic Tinted Clearcoat (D4)
- Star White Metallic Tri-coat (AZ)

Ford Co-Pilot360 Assist (68B)

- Adaptive Cruise Control with Stop-and-Go
- Voice-Activated Touchscreen Navigation System

NOTE: Evasive Steering Assist is included with Adaptive Cruise Control with Stop-and-Go.

SEL Wheels



18" machined-face aluminum wheels with Dark Stainless-painted pockets
Standard



19" machined-face aluminum wheels with Ebony-painted pockets
Optional (64H)



ESCAPE **TITANIUM**

Standard Equipment (400A)
Includes all Escape SEL Standard Equipment, Plus:

Performance and Handling

- Powertrain
 - 2.5L iVCT Atkinson-cycle I-4 Hybrid engine
 - eCVT transmission

Exterior

- Badging — “TITANIUM” on liftgate
- Chrome upper window molding with chrome beltline molding
- LED fog lamps
- Mirrors, sideview
 - Power/heated glass
 - Turn signal indicators
- Mirror caps — body-color
- Tires — 225/55R19 99H all-season
- Wheels — 19" machined-face aluminum with Dark Tarnish-painted pockets

Interior

- 12.3" digital instrument cluster
- 110V/150W AC power outlet
- Acoustic laminate glass — front-row side windows
- Ambient lighting
- Audio/entertainment
 - B&O Sound System by Bang & Olufsen, 10 speakers with subwoofer
 - HD Radio™
- Dual-zone electronic automatic temperature control
- Powerpoints (12V) — two — front of center console and cargo area
- Seats
 - Sport contour buckets
 - Leather-trimmed
 - 6-way power passenger (fore/aft, up/down, recline)
- Titanium-specific interior door and instrument panel
- Universal garage door opener

Technology

- Active Park Assist 2.0 with Forward and Reverse Sensing Systems
- Adaptive Cruise Control with Stop-and-Go and Lane Centering (included with Ford Co-Pilot360™ Assist+)
- Evasive Steering Assist (included with Ford Co-Pilot360 Assist+)
- Rain-sensing windshield wipers
- Voice-Activated Touchscreen Navigation System with SiriusXM® Traffic and Travel Link® (included with Ford Co-Pilot360 Assist+)

Safety and Security

- Auto-dimming rearview mirror
- Headlamps — LED reflector with LED signature lighting
- Perimeter alarm

BANG & OLUFSEN® 2019 and B&O® 2019. BANG & OLUFSEN™ and B&O™ are registered trademarks of Bang & Olufsen Group. Licensed by Harman Becker Automotive Systems Manufacturing Kft. All rights reserved.

Sirius, XM and all related marks and logos are trademarks of Sirius XM Radio Inc.

Ford Co-Pilot360 Assist+ (Standard)

- Adaptive Cruise Control with Stop-and-Go and Lane Centering
- Evasive Steering Assist
- Voice-Activated Touchscreen Navigation System

TITANIUM Wheel



19" machined-face aluminum wheels with Dark Tarnish-painted pockets
Standard

Optional Equipment

- 2.0L EcoBoost engine with Auto Start-Stop Technology and SelectShift® with paddle shifters on steering wheel (999)
 - Includes AWD and Class II Trailer Tow Pkg.
- Engine block heater (41H)
- Front license plate bracket (153)
- Panoramic Vista Roof with power open/close and sunshade (43M)
- Rapid Red Metallic Tinted Clearcoat (D4)
- Star White Metallic Tri-coat (AZ)
- **Titanium Premium Package (68D)**
 - Head-up display
 - Panoramic Vista Roof with power open/close and sunshade



Exterior Colors



Agate Black⁽¹⁾ (UM)



New — Dark Persian Green⁽¹⁾ (D9)



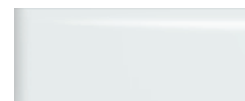
New — Desert Gold⁽¹⁾ (G6)



Ingot Silver⁽¹⁾ (UX)



Magnetic⁽¹⁾ (J7)



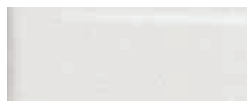
Oxford White (YZ)



New — Rapid Red Metallic Tinted Clearcoat⁽²⁾ (D4)



Sedona Orange⁽¹⁾ (BP)



New — Star White Metallic Tri-coat⁽²⁾ (AZ)



New — Velocity Blue⁽¹⁾ (E7)

(1) Metallic paint.
(2) Extra-cost option.

Interior Color and Seating Availability

Model	Material	Seat Color	Cabin Environment	Key Seating Features
S	Cloth	Dark Earth Gray	Ebony	Front buckets 60/40 split-fold-flat rear bench with fore/aft adjust
SE/SE Sport	Unique Cloth	Dark Earth Gray Sandstone	Ebony Ebony/Sandstone	Adds: heated front, driver's 10-way power and rear center fold-down armrest
SE Sport Premium Package	ActiveX Seating Material with mini-perforations	Ebony Sandstone	Ebony Ebony/Sandstone	Adds: Sport contour buckets
SEL	ActiveX Seating Material with mini-perforations	Ebony Sandstone	Ebony Ebony/Sandstone	Adds: Sport contour buckets with driver's side memory
Titanium	Leather-trimmed with mini-perforations	Ebony Sandstone	Ebony Sandstone/Sandstone	Adds: 6-way power front passenger



Retailer Education
& Training

© Copyright June 2019 by Ford Motor Company.

Intended for use by dealership personnel to inform consumers and cannot be used in advertising without permission from the Office of the General Counsel of Ford Motor Company. Specifications and descriptions contained within are based upon the most current information available at the time of release.