



↗ 03 TUNDRA

Tundra V8 Access Cab shown in Phantom Gray Pearl with available TRD Sport Package.

Eight hours isn't a full day. After all, people depend on you off the job site too.

It's that same kind of 24/7 readiness that you'll love about the 2003 Toyota Tundra. This full-size truck goes full-bore, full-time. Choose the Base model, the nicely finished SR5 or the slightly decadent Limited, and you'll not only get a truck you can count on, but one with plenty of power—even more so with the available 240-hp i-FORCE V8. Give it a little gas, and Tundra can help you shoulder just about any burden: Fill the bed with up to 1,800 lbs.,¹ or, with the available Towing Package (V8 models only—includes Class IV towing hitch, 7-pin connector, heavy-duty alternator and supplemental transmission oil cooler), you can tow up to 7,200 lbs.¹ This is one truck that takes its responsibilities seriously.

STANDARD FEATURES

REGULAR CAB (4X2 ONLY)¹

- Argent grille and front and rear bumpers
- Aerodynamic multi-reflector halogen headlamps with auto-off feature
- High Solar Energy-Absorbing (HSEA) glass
- Dual black outside mirrors
- Rear center high-mount stop lamp (CHMSL) with integrated cargo lamp
- Fuel-filler door with gas cap holder
- Removable locking tailgate
- Tailgate rail cap
- 4-wheel Anti-lock Brake System (ABS)
- P245/70R16 tires on steel wheels
- Vinyl flooring
- Fabric bench seat with vertically adjustable headrests and fold-down center armrest
- Driver and front outboard passenger air bag Supplemental Restraint System (SRS) with passenger air bag cutoff switch
- Speedometer, LCD odometer with twin tripmeters, fuel level and coolant temperature gauges
- Deluxe AM/FM ETR/CD with 4 speakers
- Dual 12-volt auxiliary power outlets
- Digital quartz clock
- Mist-cycle windshield wipers
- Driver and passenger sun visors
- Dual cup holder

V8 REGULAR CAB SR5 (4X4 ONLY) ADDITIONAL STANDARD FEATURES¹

- (In addition to/in place of Regular Cab Standard Features)
- Color-keyed front bumper with chrome grille inserts
 - Chrome body side molding inserts and chrome rear bumper
 - Driver and passenger dual sun visors with extensions
 - Color-keyed outside door handles
 - Front and rear mudguards
 - P245/70R16 tires on styled steel wheels
 - Touch-Select 4WD system
 - Cut-pile carpeting
 - Defroster-linked CFC-free air conditioning
 - Deluxe AM/FM ETR/CD with 4 speakers
 - Tilt steering wheel
 - Variable intermittent windshield wipers
 - Cruise control
 - Tachometer

V6/V8 ACCESS CAB SR5 AND V8 ACCESS CAB SR5 STEPSIDE ADDITIONAL STANDARD FEATURES¹

- (In addition to/in place of Regular Cab SR5 Standard Features)
- 4WDemand 4-wheel-drive system (V6 4WD models)
 - Touch-Select 4WD system (V8 4WD models)
 - Cruise control (V8 models)
 - Front fabric 60/40 split-bench seat with vertically adjustable headrests and fold-down center console armrest with dual cup holders (automatic models)
 - Front fabric captain's chairs with vertically adjustable headrests, multi-function center console with front and rear dual cup holders, dual 12-volt auxiliary power outlets, covered armrest storage compartment and notepad holder (V6 manual models)
 - Rear 60/40 split-bench with vertically adjustable headrests and fold-down center armrest with dual cup holders
 - Tilt-out rear quarter windows with privacy glass
 - Bed and tailgate rail caps
 - StepSide models add:
 - Stepside bed
 - Color-keyed overfenders with integrated mudguards
 - P265/70R16 tires on styled steel wheels

V8 ACCESS CAB LIMITED AND V8 ACCESS CAB LIMITED STEPSIDE ADDITIONAL STANDARD FEATURES

- (In addition to/in place of Access Cab SR5 Standard Features)
- Color-keyed overfenders with integrated mudguards, front and rear bumpers, grille and body side moldings with chrome inserts
 - Power color-keyed outside mirrors
 - P265/65R17 tires on split 5-spoke aluminum alloy wheels
 - Fog lamps
 - Premium 3-in-1 AM/FM ETR/Cassette/CD with 6-disc in-dash changer with 6 speakers and steering wheel audio controls
 - Anti-theft system with remote keyless entry
 - Power door locks and windows
 - Power sliding rear window
 - StepSide models add:
 - Stepside bed
 - Color-keyed overfenders with integrated mudguards



Regular Cab available
16" full wheel cover



SR5 standard
16" styled steel wheel



SR5 available
16" chrome clad
styled steel wheel



SR5 available
16" 5-spoke
aluminum alloy wheel



SR5 available
17" split 5-spoke
graphite-toned
aluminum alloy wheel²



Limited standard/
SR5 available
17" split 5-spoke
aluminum alloy wheel

¹Shown with available equipment.

²SR5 models with available TRD Sport Package.

COLORS


Natural White
with Gray,¹ Light Charcoal¹ or Oak interior



Salsa Red Pearl
with Light Charcoal,¹ Oak or Gray¹ interior



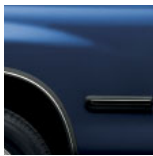
Silver Sky Metallic²
with Gray or Light Charcoal interior



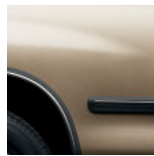
Imperial Jade Mica
with Light Charcoal,¹ Oak or Gray¹ interior



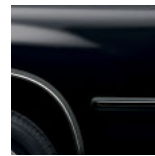
Phantom Gray Pearl
with Light Charcoal,¹ Oak or Gray¹ interior



Stratosphere Mica
with Gray or Light Charcoal interior



Desert Sand Mica³
with Oak interior



Black
with Gray,¹ Light Charcoal¹ or Oak interior

¹Not available on Base model.

²Available on SR5 only.

³Not available on Limited.

OPTIONS AND PACKAGES
Regular Cab (4x2 only)

(In addition to/in place of Access Cab SR5 Standard Features)

- Color-keyed overfenders with integrated mudguards, front and rear bumpers, grille and body side moldings with chrome inserts
- Power color-keyed outside mirrors
- P265/65R17 tires on split 5-spoke aluminum alloy wheels
- Fog lamps
- Premium 3-in-1 AM/FM ETR/Cassette/CD with 6-disc in-dash changer with 6 speakers and steering wheel audio controls

V8 Regular Cab SR5 (4x4 only)

- SR5 Extra Value Package—includes power windows and door locks, chrome power mirrors, driver and passenger dual sun visors with vanity mirrors, Lighting Package, sliding rear window with privacy glass and remote keyless entry
- Towing Package (V8 models)—includes Class IV towing receiver hitch, 7-pin connector with converter, 130-amp alternator and supplemental transmission oil cooler
- All-Weather Guard Package—includes heavy-duty battery, starter and heater
- Fog lamps

V6/V8 Access Cab SR5 and V8 Access Cab SR5 StepSide

- Extra Value Package—includes power windows and door locks, chrome power mirrors, driver and passenger dual sun visors with vanity mirrors, Lighting Package, sliding rear window with privacy glass, remote keyless entry and cruise control (standard on V8 models)
- TRD Off-Road Package (V8 models)—includes off-road-tuned suspension, Bilstein® shock absorbers, P265/70R16 BFGoodrich tires on 5-spoke aluminum alloy wheels, color-keyed fender flares with integrated mudguards and fog lamps
- TRD Sport Package (4x2 V8 models)—includes tuned coil springs, tuned Tokico shock absorbers, rear stabilizer bar, limited-slip differential, 17" split 5-spoke graphite-toned aluminum alloy wheels with P265/65R17 tires and fog lamps
- All-Weather Guard Package—includes heavy-duty battery, starter and heater
- Towing Package (V8 models)—includes Class IV towing receiver hitch, 7-pin connector with converter, 130-amp alternator and supplemental transmission oil cooler
- Daytime Running Lights (DRL)

V8 Access Cab Limited and V8 Access Cab Limited Stepside

- All-Weather Guard Package—includes heavy-duty battery, starter and heater
- Leather Trim Package—includes leather-trimmed captain's chairs with power-adjustable driver's seat and wood-grain-style interior trim
- TRD Off-Road Package—includes off-road-tuned suspension, Bilstein® shock absorbers and P265/70R16 BFGoodrich tires on 5-spoke aluminum alloy wheels
- TRD Sport Package (4x2 models)—includes tuned coil springs, tuned Tokico shock absorbers, rear stabilizer bar, limited-slip differential, 17" split 5-spoke graphite-toned aluminum alloy wheels with P265/65R17 tires and fog lamps

- Anti-theft system with remote keyless entry
- Power door locks and windows
- Power sliding rear window
- StepSide models add:
 - Stepside bed
- Color-keyed overfenders with integrated mudguards

- 16" 5-spoke aluminum alloy wheels with P265/70R16 tires with chrome wheel arch moldings
- 16" chrome clad styled steel wheels with P265/70R16 tires with chrome wheel arch moldings
- 16" styled steel wheels with P265/70R16 tires with chrome wheel arch moldings
- Limited-slip differential
- Deluxe 3-in-1 AM/FM ETR/Cassette/CD with 6 speakers
- Daytime Running Lights (DRL)

- Fog lamps
- Limited-slip differential
- Premium 3-in-1 AM/FM ETR/Cassette/CD with 6-disc in-dash changer with 6 speakers
- Deluxe 3-in-1 AM/FM ETR/Cassette/CD with 6 speakers
- 17" split 5-spoke aluminum alloy wheels with P265/65R17 tires with chrome wheel arch moldings or color-keyed overfender with integrated mudguards
- 16" 5-spoke aluminum alloy wheels with P265/70R16 tires with chrome wheel arch moldings or color-keyed overfender with integrated mudguards
- 16" chrome clad styled steel wheels with P265/70R16 tires with chrome wheel arch moldings or color-keyed overfender with integrated mudguards
- 16" styled steel wheels with P265/70R16 tires with chrome wheel arch moldings or color-keyed overfender with integrated mudguards
- Captain's chairs (automatic models, standard on 4x4 manual models) with multi-function center console with front and rear dual cup holders, dual 12-volt auxiliary power outlets, covered armrest storage compartment and notepad holder

- Towing Package—includes Class IV towing receiver hitch, 7-pin connector with converter, 130-amp alternator and supplemental transmission oil cooler
- Captain's chairs with power-adjustable driver's seat with multi-function center console with front and rear dual cup holders, dual 12-volt auxiliary power outlets, covered armrest storage compartment and notepad holder
- Daytime Running Lights (DRL)
- Limited-slip differential

SPECIFICATIONS

	Regular Cab Base 4x2	V8 Regular Cab SR5 4x4	Access Cab SR5/StepSide 4x2	4x4	V8 Access Cab Limited/StepSide 4x2	4x4
Mechanical/Performance						
Engine						
3.4-liter DOHC 24-valve EFI V6	Standard	NA	Standard/NA	Standard/NA	NA	NA
190 hp @ 4,800 rpm; 220 lb.-ft. @ 3,600 rpm						
4.7-liter DOHC 32-valve EFI i-FORCE V8	NA	Standard	Available/Standard	Available/Standard	Standard	Standard
240 hp @ 4,800 rpm; 315 lb.-ft. @ 3,400 rpm						
Ignition						
Electronic, with Toyota Direct Ignition (TDI)						
Transmission						
5-speed manual overdrive	Standard	NA	Standard ¹	Standard ¹	NA	NA
4-speed electronically controlled transmission (ECT) with overdrive	Available	Standard	Available ²	Available ²	Standard	Standard
Body construction						
Welded steel cab and bed; one-piece frame rails with 9 cross members and fully boxed front sub-frame						
Suspension						
Coil-spring double-wishbone independent front suspension with low-pressure gas-filled shock absorbers and stabilizer bar;						
leaf spring rear suspension with low-pressure gas-filled shock absorbers						
Steering						
Engine speed-sensing power-assisted rack-and-pinion steering						
Turning circle diameter (ft.)	44.9	44.3	44.9	44.3	44.9	44.3
Brakes						
Power-assisted ventilated front disc/rear drum with 4-piston front calipers, rear load-sensing proportioning and bypass valve (LSP&BV) and 4-wheel Anti-lock Brake System (ABS)						
Rear differential ratio—V6 (manual/automatic)	4.08:1/4.08:1	NA	4.08:1/4.08:1	4.10:1/4.30:1	NA	NA
—V8 (automatic)	NA	3.91:1	3.92:1	3.91:1	3.92:1	3.91:1
—V8 LSD (available)	NA	3.91:1	3.92:1	3.91:1	3.92:1	3.91:1
Exterior Dimensions (IN.)						
Overall height	70.5	70.5	70.7	71.5	70.9 (V8: 70.5)	71.7 (V8: 71.3)
Overall width	75.2	75.2	75.2	75.2	79.3	79.3
Length with rear bumper	217.5	217.5	217.5	217.5	217.5	217.5
Wheelbase	128.3	128.3	128.3	128.3	128.3	128.3
Track (front/rear)	66.2/64.9	65.9/64.9	66.2/64.9	65.9/64.9	66.2/64.9	65.9/64.9
Inside bed length/width (StepSide)	98.2/61.2	98.2/61.2	76.5/61.2 (49.3)	76.5/61.2 (49.3)	76.5/61.2 (49.3)	76.5/61.2 (49.3)
width between wheelwells/height (StepSide)	49.3/16.7	49.3/16.7	49.3/16.7 (19.0)	49.3/16.7 (19.0)	49.3/16.7 (19.0)	49.3/16.7 (19.0)
Interior dimensions front/rear (IN.)						
Head room	40.3/NA	40.3/NA	40.3/38.3	40.3/38.3	40.3/38.3	40.3/38.3
Shoulder room	62.4/NA	62.4/NA	62.4/63.2	62.4/63.2	62.4/63.2	62.4/63.2
Hip room	59.3/NA	59.3/NA	59.3/56.6	59.3/56.6	59.3/56.6	59.3/56.6
Leg room	41.5/NA	41.5/NA	41.5/28.6	41.5/28.6	41.5/28.6	41.5/28.6
Off-Highway						
Approach/departure angle (degrees)						
—V6	26/23	NA	27/23	28/23	NA	NA
—V8	NA	27/24	26/23	28/23	27/23	29/24
Minimum running ground clearance (in.)						
	10.4	11.2	10.6 (V8: 10.4)	11.4 (V8: 11.2)	10.8	11.6
Underbody protection						
All models: skid plates under engine and fuel tank (transfer case on 4WD models)						
4x4 transfer case ratios (high/low)	NA	1.00:1/2.57:1	NA	1.00:1/2.57:1	NA	1.00:1/2.57:1

¹Not available with V8.

²Standard with V8.

³Including weight of occupants, equipment and cargo.

⁴Do not exceed the Gross Combined Weight Rating for your vehicle. See your Toyota dealer for GCWR limits and additionally required equipment. Consult your trailer and hitch suppliers to ensure proper hookup. See your Toyota dealer for details.

⁵With available Towing Package.

⁶Preliminary mileage estimates determined by Toyota. Final EPA mileage estimates not available at time of printing. See your Toyota dealer for details.

1-800-GO-TOYOTA

Have you logged 100,000, 200,000 or more miles on your Toyota

with the original engine, transmission and drivetrain? If you have, give us a call at 1-800-GO-TOYOTA and tell us your story.

SPECIFICATIONS continued

	Regular Cab Base 4x2	V8 Regular Cab SR5 4x4	Access Cab SR5/StepSide 4x2	4x4	V8 Access Cab Limited/StepSide 4x2	4x4
Weights and Capacities						
Curb weight (lbs.)						
—V6 (manual/automatic)	3,925/3,955	NA	4,160/4,205	4,435/4,480	NA	NA
—V8 (automatic/StepSide)	NA	4,490/NA	4,450/4,495	4,725/4,740	4,400/4,410	4,675/4,685
Gross Vehicle Weight Rating—GVWR (lbs.)						
—V6	5,500	NA	5,700	6,000	NA	NA
—V8	NA	6,200	6,200/6,010	6,200/6,010	6,200/6,010	6,200/6,010
Payload ³ (lbs.)						
—V6 (manual/automatic)	1,575/1,545	NA	1,540/1,495	1,565/1,520	NA	NA
—V8 (automatic/StepSide)	NA	1,710/NA	1,750/1,515	1,475/1,270	1,800/1,600	1,525/1,325
Towing capacity ⁴ (lbs.)						
—V6	5,000	NA	4,800	4,800	NA	NA
—V8	NA	5,400/7,2005	5,300/7,1005	5,100/6,9005	5,300/7,1005	5,100/6,7005
Gross Combined Weight Rating—GCWR (lbs.)						
—V6	9,200	NA	9,200	9,500	NA	NA
—V8	NA	10,000/11,8005	10,000/11,8005	10,000/11,8005	10,000/11,8005	10,000/ 11,8005
Fuel tank (gal.)	26.4	26.4	26.4	26.4	26.4	26.4
Tires						
Size		P245/70R16	P245/70R16	P245/70R16	P245/70R16	P265/65R17
P265/65R17						
Type	All-Season	Mud-and-Snow	All-Season	Mud-and-Snow	Mud-and-Snow	Mud-and-
Snow						
Spare	Full-size	Full-size	Full-size	Full-size	Full-size	Full-size
Mileage Estimates (MPG City/Highway)⁶						
V6 5-speed manual	16/19	NA	16/19	15/18	NA	NA
V6 4-speed automatic	16/19	NA	16/19	15/18	NA	NA
V8 4-speed automatic	NA	14/17	15/18	14/17		

¹Not available with V8.

²Standard with V8.

³Including weight of occupants, equipment and cargo.

⁴Do not exceed the Gross Combined Weight Rating for your vehicle. See your Toyota dealer for GCWR limits and additionally required equipment. Consult your trailer and hitch suppliers to ensure proper hookup. See your Toyota dealer for details.

⁵With available Towing Package.

⁶Preliminary mileage estimates determined by Toyota. Final EPA mileage estimates not available at time of printing. See your Toyota dealer for details.

1-800-GO-TOYOTA

Have you logged 100,000, 200,000 or more miles on your Toyota with the original engine, transmission and drivetrain? If you have, give us a call at 1-800-GO-TOYOTA and tell us your story.