



SHIFT_

2013
PATHFINDER®



Ken Garff Nissan Salt Lake

THE ALL-NEW 2013 PATHFINDER

INTRODUCING THE MOST INNOVATIVE PATHFINDER EVER.

Over 25 years of legendary capability meets a brand-new generation of SUV. From climbing hills to climbing in, Pathfinder redefines it all. With an intuitive 4-Wheel Drive System that's more adaptable than ever. A revolutionary CVT transmission for seamless power and a best-in-class 26 MPG on the highway.^{1,2} The highest standard towing rating in its class.^{1,3} A third row that's spacious and surprisingly easy to get into. And once the trail is behind you, an available class-exclusive Around View[®] Monitor that helps you grab a parking space right out front.^{1,4} Welcome to the Next Gen SUV.

Nissan. Innovation that excites.[™]



¹Ward's Large Cross/Utility segment. ²'13 Pathfinder vs. '12 and '13 competitors. ³EPA fuel economy estimate of 20 city and 26 highway MPG for MY13 Pathfinder 2WD. Actual mileage may vary with driving conditions – use for comparison purposes only. ⁴See Nissan Towing Guide and Owner's Manual for proper use. ⁵Parking aid/convenience feature. Cannot completely eliminate blind spots or warn of moving objects. May not detect every object. Always check surroundings before moving vehicle. Not a substitute for proper backing procedures. Always turn to check what is behind you before backing up.



5-STAR ACCOMMODATIONS – BEFORE YOU EVEN GET TO THE LODGE.

The most comfortable Pathfinder ever beckons you with premium comforts, including standard Tri-Zone Automatic Temperature Control and available heated and cooled front seats, heated 2nd-row seats, even an available class-exclusive heated steering wheel.¹ With available navigation featuring *Zagat Survey*[®] restaurant recommendations and live weather updates, plus available dual memory seating system and a Bose[®] premium audio system, you've got luxury accommodations – without any reservations.^{2, 3, 4}

¹Ward's Large Cross/Utility Market Segmentation. MY13 Pathfinder vs. 2012 Large Cross/Utility Class. ²Never program while driving. GPS mapping may not be detailed in all areas or reflect current road regulations. ³Required SiriusXM Satellite Radio, NavTraffic and NavWeather subscriptions sold separately after trial period. Installation costs, one-time activation fee, other fees and taxes will apply. NavTraffic available in select markets. Services available only to those 18 or older in the 48 contiguous states and D.C. Fees and programming subject to change. Subscriptions governed by Customer Agreement available at siriusxm.com. ©2012 Sirius XM Radio Inc. Sirius, XM and all related marks and logos are trademarks of Sirius XM Radio Inc. ⁴Tri-Zone operation requires compatible auxiliary media system. See Owner's Manual for details. Bose is a registered trademark of The Bose Corporation. Zagat Survey[®] is a registered trademark of Zagat Survey, LLC Ltd.

THE FEELING YOU HAVE A LOT
MORE WORLD TO SEE.



Nissan Pathfinder Platinum shown in Dark Slate with optional equipment.

Cargo and load capacity limited by weight and distribution. Always secure all cargo. Heavy loading of the SUV with cargo, especially on the roof, will affect the handling and stability of the vehicle.

THE FEELING THAT EVERYONE CAN COME ALONG.

In the all-new Pathfinder, capability goes way beyond taking on rugged conditions, it's conquering the real world you face every day. That means more than just seating for seven. It means seating for seven with best-in-class passenger volume,¹ including a 2nd row that slides over five inches for stretch-out room and the only 3rd-row reclining seat in its class.^{1,2} Add in the convenience of features like Push Button Ignition, rear A/C and available Remote Engine Start System, and this is one time where one size fits all beautifully.³



Push Button Ignition



Rear A/C and heater with available 120-volt outlet



Remote Engine Start System³



Nissan Pathfinder Platinum shown in Almond Leather with optional equipment.

¹Ward's Large Cross/Utility Market Segmentation. MY13 Pathfinder vs. 2012 Large Cross/Utility Class.
²Seats should not be in the reclined position when the vehicle is in motion. ³State laws may apply; review local laws before using.



OPENING UP TO A WORLD OF POSSIBILITIES.

Cargo? Pathfinder makes easy work of it, with folding 2nd- and 3rd-row seats that create a virtually flat floor and up to 79.8 cubic feet of cargo space. There's also an under-floor storage area that keeps valuables out of sight. It's easily accessed even when the 3rd row is upright, for extra cargo space when you've got seven on board.



EZ Flex™ Seating System

What good is a spacious 3rd row if you can't get to it? With the innovative EZ Flex™ Seating System, the 2nd row glides and tilts forward for easy access. And once you're in the 3rd row, you'll find it's exceptionally comfortable, thanks to class-exclusive reclining seats.^{1, 2, 3}

LATCH AND GLIDE™ Technology

With Pathfinder's LATCH AND GLIDE™ technology, you can even tilt and slide the right side of the 2nd row with a child seat securely strapped in.¹

¹Slide forward function should not be performed with the CRS occupied. ²Ward's Large Cross/Utility Market Segmentation. MY13 Pathfinder vs. 2012 Large Cross/Utility Class. ³Seats should not be in the reclined position when the vehicle is in motion. Cargo and load capacity limited by weight and distribution. Always secure all cargo.

MAKING ROOM FOR UNFORGETTABLE MOMENTS.



The Less Rules, The Better
With Pathfinder, being spontaneous comes easily. Whether that means something as simple as bringing along an extra friend, or a last-minute invitation to a great getaway spot. With equal measures of flexibility, capability and comfort, you're ready.



Thoughtful From Top To Bottom
Pathfinder makes your next trip that much more enjoyable, thanks to easy loading from an available power liftgate that opens at the touch of a finger. And with an available large Dual Panorama Moonroof, everyone gets a great view of the sun, the sky and the stars. Nap time? At the push of a button, power sunshades create a cozier interior.

GETTING A GREAT VIEW WHEREVER YOU LOOK.

Tri-Zone Entertainment. If you've ever taken a trip with kids, you probably know it's hard to please everyone. But with Pathfinder's available Tri-Zone Entertainment System, you actually can.¹ The rear monitors can play individually, giving a choice of DVDs, video games, photos and more that you can control from the audio system's 8-inch VGA screen. And with those in back wearing wireless headphones, you can adjust the 13-speaker Bose® audio system to play only in front, letting you enjoy your own choice of entertainment in perfect harmony.



Advanced Navigation. So much more than just maps, Pathfinder's available touch-screen Nissan Navigation System gives you live traffic and weather updates to keep you in the know. Hungry? There's even *Zagat Survey*® restaurant recommendations.^{2,3}



iPod® Integration. Your music at your fingertips. Just plug in to Pathfinder's available USB input and control your iPod® through the audio system, including the remote controls mounted on the steering wheel. Rock on!⁴



Advanced Drive-Assist™ Display. From trip computer to 4WD torque distribution, the new Advanced Drive-Assist™ Display serves up info right in front of you – helping to minimize time looking away. Its intuitive 3-D depth and tilt design help you take it all in quicker.

¹Tri-Zone operation requires compatible auxiliary media system. See Owner's Manual for details. ²Never program while driving. GPS mapping may not be detailed in all areas or reflect current road regulations. ³Required SiriusXM Satellite Radio, NavTraffic and NavWeather subscriptions sold separately after trial period. Installation costs, one-time activation fee, other fees and taxes will apply. NavTraffic available in select markets. Services available only to those 18 or older in the 48 contiguous states and D.C. Fees and programming subject to change. Subscriptions governed by Customer Agreement available at siriusxm.com. ©2012 Sirius XM Radio Inc. Sirius, XM and all related marks and logos are trademarks of Sirius XM Radio Inc. ⁴Driving is serious business and requires your full attention. Do not operate any devices connected to the USB or auxiliary audio input jack while driving. Bose® is a registered trademark of The Bose Corporation. iPod is a registered trademark of Apple, Inc. All rights reserved. iPod not included. Zagat Survey® is a registered trademark of Zagat Survey, LLC Ltd.

CONFIDENCE AT YOUR FINGERTIPS.

Intuitive 4WD. With Pathfinder's All-Mode 4x4-i, you've got a system that's capable on-road and off. And it's the only vehicle in its class with selectable driving modes.¹ You can choose full-time 2WD for maximum efficiency. Auto Mode constantly monitors conditions and adjusts the balance of power between front and rear wheels for best traction. Challenging conditions? 4WD Lock Mode is your choice. And when your travels take you on steeper paths, hill start assist helps prevent rollback when starting and driving away on an incline.



Balance of Power. The Advanced Drive-Assist™ Display illustrates the Pathfinder dividing the power between the front and rear axles, helping to give you the available traction and control you need.



Nissan Pathfinder Platinum shown in Cayenne Red with optional equipment.

¹Ward's Large Cross/Utility Market Segmentation. MY13 Pathfinder vs. 2012 Large Cross/Utility Class.



**HERE'S TO SAVING GAS MONEY
YOU CAN POUR INTO THE BOAT.**

Efficiency, brought to you by the Next-Generation Xtronic CVT.[®] With Pathfinder's class-exclusive Xtronic CVT[®] transmission, you have a virtually gearless wonder. It can hold the engine at the ideal rpm for the job, giving you a wave of power when you need it and running low rpm for quiet, efficient cruising when you don't. Proof? Best-in-class fuel economy in city (20 MPG), combined (22 MPG) and highway (26 MPG).^{1,2}

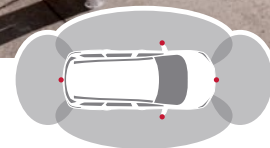
Power, Courtesy of a 3.5-L V6 Engine. Seven on board, a big beautiful boat in tow. This is the stuff that tests what an SUV is made of. Pathfinder takes it on with 260 hp of 3.5-L V6 muscle and a CVT that knows the engine's sweet spot for the power you need, giving a standard 5,000 lbs. towing rating³ – the highest in its class.¹ For those who tow frequently, a Towing Package is also available (see Specifications).

**26 MPG
HWY²
260 HP
240^{LB-FT} TORQUE
5,000^{LBS. MAXIMUM} TOWING³**

¹Ward's Large Cross/Utility Market Segmentation. MY13 Pathfinder vs. 2012 Large Cross/Utility Class. ²EPA fuel economy estimate of 20 city and 26 highway MPG for MY13 Pathfinder 2WD. Actual mileage may vary with driving conditions – use for comparison purposes only. ³See Nissan Towing Guide and Owner's Manual for proper use. Cargo and load capacity limited by weight and distribution. Always secure all cargo.



4 CAMERAS



CREATE A 360° VIEW



THE FEELING YOU CAN NAIL ANY SPACE.

A rearview camera is great when you're maneuvering into a tight space. Now, with Pathfinder's available class-exclusive Around View® Monitor – a Nissan innovation – you have not one but four wide-angle cameras as your helpful spotters. So quit circling the block – that space is yours!^{1,2}

Bird's-eye View. The system works by converting the view from each of four wide-angle cameras (in the front and rear and in the side mirrors) into a virtual composite overhead view of your Pathfinder. Now you can see your vehicle's position in relation to its surroundings on all sides, helping you avoid not only the car behind or in front, but helping to save your wheels from nasty curb scuffs.¹

Four Split-screen Choices. When your Pathfinder is in "Reverse," the system automatically shows the rear view/bird's-eye combo (A). Press the "Camera" button and bird's-eye view changes to the right curbside view. Likewise, in "Drive," up to speeds of about 5 mph, you get a look at what's in front – and you can use the "Camera" button to select either right curbside (B) or bird's-eye view (C).

¹Parking aid/convenience feature. Cannot completely eliminate blind spots. May not detect every object and does not warn of moving objects. Always check surroundings before moving vehicle. Not a substitute for proper backing procedures. Always turn to check what is behind you before backing up. ²Ward's Large Cross/Utility Market Segmentation. MY13 Pathfinder versus 2012 Large Cross/Utility Class.

BECAUSE YOU CAN NEVER BE TOO PREPARED.

Pathfinder comes with advanced safety features like Vehicle Dynamic Control that are ready to help you avoid an accident and keep the adventure going.¹ Also helping to protect you are Zone Body construction submitted to rigorous crash testing and over 50 standard safety features, including six air bags. All poised to respond in case of an unavoidable event.²

A. Vehicle Dynamic Control (VDC). A slick spot in a corner can suddenly have you going in a direction you didn't want. VDC, also known as stability control, monitors your steering and braking to help you maintain your steered path under certain conditions by reducing engine output and/or applying brake pressure to specific wheels.¹

B. Traction Control System (TCS). Pathfinder's power is wasted if all it does is spin the tires, so when the standard Traction Control System senses drive-wheel spin, it responds by reducing throttle or applying brake pressure to help maintain traction.

C. Anti-lock Braking System (ABS). The standard ABS pumps the brakes faster than you possibly can in panic-braking situations to help prevent wheel lockup, so you can continue to steer around obstacles while braking heavily.

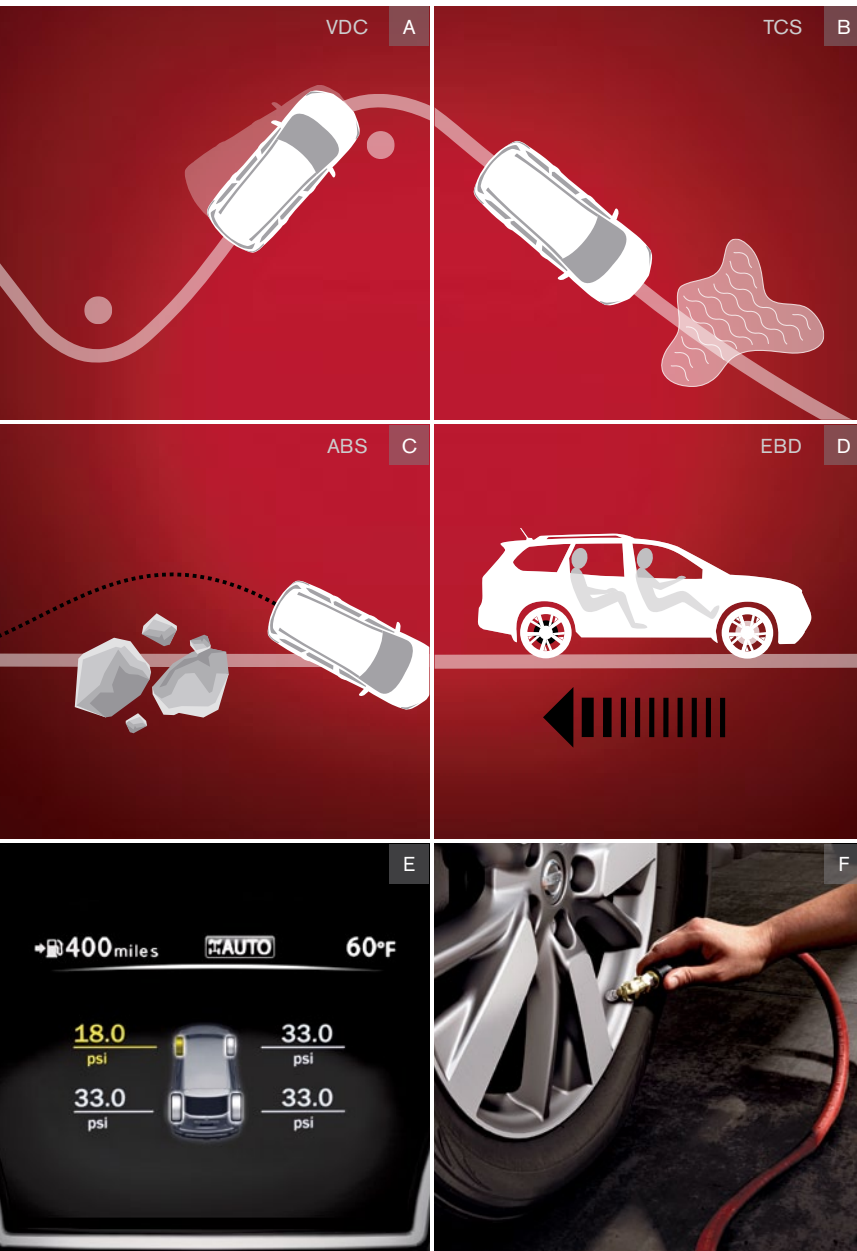
D. EBD. Electronic Brake force Distribution (EBD) is designed to send extra force to the rear brakes when there's additional weight in the back.

Brake Assist. If you need to slam on the brakes, Brake Assist detects how hard you're braking, and if it senses you are in an emergency, it will automatically help to apply maximum braking force.

Brake Override Technology. Like every Nissan since 2005, Pathfinder comes standard with Brake Override Technology. Designed to help slow down your vehicle and bring it to a safe stop in an emergency, it works by overriding accelerator input and reducing engine power when the accelerator and brake are applied simultaneously.

E. Tire Pressure Monitoring System with individual tire pressure display. When your tire pressure is low, an icon illuminates on your dash to let you know. On certain models, the individual tire pressure display will indicate which tire is low on the Advanced Drive-Assist™ Display.³

F. Class-Exclusive Easy-Fill Tire Alert. When filling your tires, the class-exclusive Easy-Fill Tire Alert gives you a friendly beep of the horn when you've reached the right pressure.^{4,5}



Nissan Advanced Air Bag System. Dual-stage supplemental front air bags adjust their inflation rate, depending on the severity of impact and seat belt usage. If your front passenger seat is empty, an occupant-classification sensor deactivates that air bag. Standard front seat-mounted side impact supplemental air bags are built into the seats, so they move with you as you adjust your seat. Above, standard roof-mounted curtain side impact supplemental air bags (with rollover sensor) provide enhanced head protection for front and rear outboard seat occupants.²

Snug Kids®. Nissan safety engineers have dedicated thousands of hours to evaluating hundreds of child restraints in Nissan vehicles. The result: An industry first, The Snug Kids® Child Safety Seat Fit Guide. This guide lists child seats that fit the rear seats of Nissan vehicles, as well as offers invaluable tips on correct installation. Check out this video and look for the latest Fit Guide at NissanUSA.com/SnugKids.



¹VDC, which should remain on when driving except when freeing the vehicle from mud or snow, cannot prevent accidents due to abrupt steering, carelessness, or dangerous driving techniques. Always drive safely. ²Air bags are only a supplemental restraint system; always wear your seat belt. Even with the occupant classification sensor, rear-facing child restraints should not be placed in the front-passenger's seat. Also, all children 12 and under should ride in the rear seat properly secured in child restraints, booster seats, or seat belts according to their size. Air bags will only inflate in certain accidents. See your Owner's Manual for more details. Inflated air bags shown for illustration purposes only; actual coverage area may differ. Air bags deflate after deployment. ³Tire Pressure Monitoring System is not a substitute for regular tire pressure checks. ⁴Ward's Large Cross/Utility Market Segmentation. MY13 Pathfinder vs. 2012 Large Cross/Utility Class. ⁵Vehicle must be on for Easy-Fill Tire Alert to operate.

TAKE READY TO THE NEXT LEVEL.

GENUINE NISSAN ACCESSORIES. IMPRESS. CONNECT. PROTECT. ORGANIZE.

Every Genuine Nissan Accessory is: custom-fit, custom-designed and durability-tested; backed by Nissan's 3-year/36,000-mile limited warranty; and can be financed when installed by dealer at time of purchase.¹

A. Auto-dimming Rearview Mirror with HomeLink® and Compass
Brights on behind you? Here's the answer.

B. Under-floor Storage Dividers²
A place for everything and everything in its place.

C. All-season Floor Mats (4-piece set)
Happiness is carpet that looks brand new.

D. Fog Lights
Help you see and be seen.

E. Illuminated Kick Plates
For a grand entry, every time.

F. Remote Engine Start System³
Heat or cool your Pathfinder before you get in.

G. Roof Rail Crossbars⁴
Great for bringing along your skis or bike.

H. Splash Guards
Unexpected mud bath? No problem.

Additional Accessories:

- Cargo Area Protector
- Rear Cargo Cover
- Cargo Net
- Interior Accent Lighting
- Towing Accessories⁵
- Dual Head Restraint DVD Monitors
- Hatch Tent
- Stainless Steel Rear Bumper Protector
- And More

¹Covered by Nissan's Limited Warranty on Genuine Nissan Accessories for the longer of 12 months/12,000 miles or the remaining period under the 3-year/36,000-mile (whichever comes earlier) Nissan New Vehicle Limited Warranty. Terms and conditions apply. See Warranty Information Booklet for details.
²Cargo and load capacity limited by weight and distribution. Always secure all cargo. ³State laws may apply; review local laws before using. ⁴Heavy loading of the SUV with cargo, especially on the roof, will affect handling and stability of the vehicle. ⁵See Nissan Towing Guide and Owner's Manual for proper use. HomeLink® is a registered trademark of Johnson Controls Technology Company.



For more information and to shop online for Genuine Nissan Accessories, go to parts.NissanUSA.com.

Nissan Pathfinder SV shown in Cayenne Red with Fog Lights, Splash Guards, Hood Protector, Side-window Deflectors and Roof Rail Crossbars.

CHOOSE THE PATHFINDER THAT'S RIGHT FOR YOU.

TRIM BUILD

CHOOSE FROM THESE TRIM LEVELS

S

- 3.5-liter V6 engine with 260 hp and 240 lb-ft of torque
- Xtronic CVT[®] (Continuously Variable Transmission)
- Available All-Mode 4x4-i intuitive 4WD system
- Hill start assist
- 18" Aluminum-alloy wheels
- 7-passenger seating capacity
- EZ Flex[™] Seating System with second-row 60/40-split fold-flat bench seat featuring LATCH AND GLIDE[™] technology and third-row 50/50-split fold-flat reclining bench seat¹
- Tri-Zone Automatic Temperature Control (ATC)
- Advanced Drive-Assist[™] Display
- Remote keyless entry
- Push Button Ignition
- Power windows
- AM/FM/in-dash 6-CD audio system with six speakers
- MP3/WMA CD playback capability
- Auxiliary audio input jack²
- Illuminated steering wheel-mounted audio controls
- Nissan Advanced Air Bag System³
- Vehicle Dynamic Control (VDC) with Traction Control System (TCS)⁴
- Tire Pressure Monitoring System (TPMS) with Easy-Fill Tire Alert^{5,6}



SV INCLUDES S EQUIPMENT PLUS:

- 8-way power adjustable driver's seat
- Smart Auto Headlights
- Roof rails
- Information Center with 7-inch QVGA color monitor
- RearView Monitor⁷
- Rear Sonar System⁸
- Individual tire pressure display
- Bluetooth[®] Hands-free Phone System⁹
- Nissan Intelligent Key[®]
- Power windows with front one-touch auto-up/down
- Vehicle speed-sensitive intermittent windshield wipers
- Dual illuminated visor vanity mirrors
- Leather-wrapped steering wheel and shift knob
- AM/FM/CD audio system
- USB connection port for iPod[®] interface and other compatible devices²
- Auxiliary audio/video input jacks (replaces standard auxiliary audio input jack)²
- SiriusXM Satellite Radio¹⁰

KEY AVAILABLE PACKAGE:

- Trailer Tow Package



SL INCLUDES SV EQUIPMENT PLUS:

- Leather-appointed seats and door trim
- Fog lights
- Chrome body side moldings
- Power liftgate
- Heated outside mirrors with reverse tilt-down feature
- Remote Engine Start System¹¹
- Auto-dimming rearview mirror
- HomeLink[®] Universal Transceiver
- Digital compass
- Welcome lighting
- Heated front and rear seats
- Driver's seat and outside mirrors position memory
- Driver's seat power lumbar support
- 4-way power adjustable passenger's seat
- Wood-tone trim
- Stainless steel kick plates

KEY AVAILABLE PACKAGES:

- Trailer Tow Package
- Premium Package



Platinum INCLUDES SL EQUIPMENT PLUS:

- 20" Aluminum-alloy wheels
- Tow hitch receiver with 7-pin trailer tow wiring harness¹²
- Nissan Hard Drive Navigation System with 8-inch VGA touch-screen monitor and voice recognition¹³
- NavTraffic and NavWeather provided by SiriusXM¹⁰
- Zagat Survey[®] restaurant reviews
- Around View[®] Monitor¹⁴
- Bose[®] audio system with AM/FM/CD and 13 speakers, including Bose[®] Acoustic Waveguide technology
- DVD video playback capability
- Streaming audio via Bluetooth[®] wireless technology⁹
- 120-volt AC power outlet
- Climate-controlled front seats (heated and cooled)
- Heated steering wheel
- Power-tilt/telescoping steering column
- Steering-wheel position memory

KEY AVAILABLE PACKAGE:

- Premium Package



Images may show additional available equipment. ¹Slide function should not be performed with the CRS occupied. ²Driving is serious business and requires your full attention. Do not operate any devices connected to the USB or auxiliary audio input jack while driving. ³Air bags are only a supplemental restraint system; always wear your seat belt. Even with the occupant classification sensor, rear-facing child restraints should not be placed in the front-passenger's seat. Also, all children 12 and under should ride in the rear seat properly secured in child restraints, booster seats, or seat belts according to their size. Air bags will only inflate in certain accidents; see your Owner's Manual for more details. ⁴VDC, which should remain on when driving except when freeing the vehicle from mud or snow, cannot prevent accidents due to abrupt steering, carelessness, or dangerous driving techniques. Always drive safely. ⁵Tire Pressure Monitoring System is not a substitute for regular tire pressure checks. ⁶Vehicle must be on for Easy-Fill Tire Alert to operate. ⁷Parking aid/convenience feature. Cannot completely eliminate blind spots or warn of moving objects. May not detect every object. Always check surroundings before moving vehicle. Not a substitute for proper backing procedures. Always turn to check what is behind you before backing up. ⁸The Rear Sonar System is a convenience, but is not a substitute for proper backing procedures. Always turn and check that it is safe to do so before backing up. May not detect every object behind you. ⁹Availability of specific features is dependent upon the phone's Bluetooth[®] support. Please refer to your phone Owner's Manual for details. Bluetooth word mark and logos are owned by Bluetooth SIG, Inc., and any

use of such marks by Nissan is under license. ¹⁰Required SiriusXM Satellite Radio, NavTraffic and NavWeather subscriptions sold separately after trial period. Installation costs, one-time activation fee, other fees and taxes will apply. NavTraffic available in select markets. Services available only to those 18 or older in the 48 contiguous states and D.C. Fees and programming subject to change. Subscriptions governed by Customer Agreement available at siriusxm.com. ©2012 Sirius XM Radio Inc. Sirius, XM and all related marks and logos are trademarks of Sirius XM Radio Inc. ¹¹State laws may apply; review local laws before using. ¹²See Nissan Towing Guide and Owner's Manual for proper use. ¹³Never program while driving. GPS mapping may not be detailed in all areas or reflect current road regulations. ¹⁴Parking aid/convenience feature. Cannot completely eliminate blind spots. May not detect every object and does not warn of moving objects. Always check surroundings before moving vehicle. Not a substitute for proper backing procedures. Always turn to check what is behind you before backing up. Bose[®] is a registered trademark of The Bose Corporation. HomeLink[®] is a registered trademark of Johnson Controls Technology Company. iPod[®] is a registered trademark of Apple, Inc. All rights reserved. iPod not included. Zagat Survey[®] is a registered trademark of Zagat Survey LLC, Ltd.

SPECIFICATIONS

Engine	S	SV	SL	Platinum
VQ35DE – 3.5-liter DOHC 24-valve V6 engine	■		■	■
Horsepower – 260 hp @ 6400 rpm				
Torque – 240 lb-ft @ 4400 rpm				
Emissions – LEV2 ULEV				
Continuously Variable Valve Timing Control System				
(CVTCS) on intake valves	■	■	■	■
Variable induction system	■	■	■	■
Nissan Direct Ignition system with iridium-tipped				
spark plugs	■	■	■	■
Electronic drive-by-wire throttle	■	■	■	■

Drivetrain	S	SV	SL	Platinum
Front-Wheel Drive (FWD)	■	■	■	■
All-Mode 4x4-i intuitive 4WD system	□	□	□	□
Hill start assist	■	■	■	■
Xtronic CVT* (Continuously Variable Transmission)	■	■	■	■

Brakes	S	SV	SL	Platinum
4-wheel vented disc brakes	■	■	■	■
Anti-lock Braking System (ABS)	■	■	■	■
Electronic Brake force Distribution (EBD)	■	■	■	■
Brake Assist	■	■	■	■

Suspension/Steering	S	SV	SL	Platinum
Independent strut front suspension	■	■	■	■
Independent multi-link rear suspension	■	■	■	■
Dual Flow Path* shock absorbers	■	■	■	■
Front and rear stabilizer bars	■	■	■	■
Electronic hydraulic power-assisted speed-				
sensitive steering	■	■	■	■

Wheels/Tires	S	SV	SL	Platinum
18" x 7.5" aluminum-alloy wheels	■	■	■	■
20" x 7.5" aluminum-alloy wheels				■
P235/65R18 all-season tires	■	■	■	■
P235/55R20 all-season tires				■

Exterior Features	S	SV	SL	Platinum
Smart Auto Headlights		■	■	■
Fog lights			■	■
Roof rails		■	■	■
Front tow hook		■	■	■
Tow hitch receiver with 7-pin wiring harness		□	□	■
Dual power heated outside mirrors			■	■
with reverse tilt-down feature			■	■
Chrome body side moldings			■	■
Dual Panorama Moonroof			□	□
Front UV-reducing solar glass and rear privacy glass	■	■	■	■

■ Standard	□	□	□	□
	□	□	□	□
	□	□	□	□
	□	□	□	□

*Required SiriusXM Satellite Radio, NavTraffic and NavWeather subscriptions sold separately after trial period. Installation costs, one-time activation fee, other fees and taxes will apply. NavTraffic available in select markets. Services available only to those 18 or older in the 48 contiguous states and D.C. Fees and programming subject to change. Subscriptions governed by Customer Agreement available at siriusxm.com. ©2012 Sirius XM Radio Inc. Sirius, XM and all related marks and logos are trademarks of Sirius XM Radio Inc. The Bluetooth® word mark and logos are owned by Bluetooth SIG, Inc. and any use of such marks by Nissan is under license. Bose® is a registered trademark of The Bose Corporation. HomeLink® is a registered trademark of Johnson Controls Technology Company. iPod® is a registered trademark of Apple, Inc. All rights reserved. iPod not included. Zagat Survey® is a registered trademark of Zagat Survey LLC, Ltd.

Comfort/Convenience	S	SV	SL	Platinum
Advanced Drive-Assist™ Display	■	■	■	■
Information Center with 7-inch QVGA color monitor		■	■	■
Nissan Hard Drive Navigation System with 8-inch				
VGA touch-screen monitor and voice recognition				■
NavTraffic and NavWeather provided by SiriusXM ¹				■
Zagat Survey® restaurant reviews				■
Rear Sonar System		■	■	■
RearView Monitor		■	■	■
Around View® Monitor				■
Push Button Ignition	■	■	■	■
Remote keyless entry	■			
Nissan Intelligent Key®		■	■	■
Power liftgate			■	■
Remote Engine Start System			■	■
Bluetooth® Hands-free Phone System		■	■	■
HomeLink® Universal Transceiver			■	■
Tri-Zone Automatic Temperature Control (ATC)	■	■	■	■
In-cabin microfilter	■	■	■	■
Power door locks with auto-locking feature	■	■	■	■
Power windows with driver's one-touch auto-down	■			
Power windows with front one-touch auto-up/down	■	■	■	■
Cruise control with steering wheel-mounted controls	■	■	■	■
Variable intermittent windshield wipers	■			
Vehicle speed-sensitive intermittent windshield wipers	■	■	■	■
Rear window intermittent wiper	■	■	■	■
Auto-dimming rearview mirror			■	■
Digital compass (integrated in-mirror on SL)			■	■
Front map lights	■	■	■	■
Rear reading lights	■	■	■	■
Welcome lighting			■	■
Two 12-volt DC power outlets	■			
Four 12-volt DC power outlets		■	■	■
120-volt AC power outlet			□	■
Sun visors with vanity mirrors and extensions	■	■	■	■
Sun visors with illuminated vanity mirrors and extensions		■	■	■
Tilt/telescoping steering column	■	■	■	■
Power tilt/telescoping steering column				■
Front seatback map pockets	■	■	■	■
Overhead sunglasses holder	■	■	■	■
Eight cup holders and six bottle holders	■	■	■	■
Cargo area tie-downs (eight)	■	■	■	■
Cargo area under-floor storage	■	■	■	■

Seating/Appointments	S	SV	SL	Platinum
6-way manual adjustable driver's seat with				
manual lumbar	■			
8-way power adjustable driver's seat with				
manual lumbar		■		
8-way power adjustable driver's seat with				
power lumbar			■	■
Driver's seat and outside mirrors position memory			■	■
Steering-wheel position memory			■	■
4-way power adjustable front-passenger's seat			■	■
EZ Flex™ Seating System with 2nd-row 60/40 split				
fold-flat bench seat featuring LATCH AND GLIDE™				
and 3rd-row 50/50 split fold-flat reclining bench seat	■	■	■	■
Cloth seat trim	■	■		
Leather-appointed seats and door trim			■	■
Heated front seats			■	■
Climate-controlled front seats (heated and cooled)				■
Heated rear seats			■	■
Heated steering wheel			■	■
Leather-wrapped steering wheel and shift knob		■	■	■
Wood-tone trim			■	■
Stainless steel kick plates			■	■

Audio/Entertainment	S	SV	SL	Platinum
AM/FM/CD audio system with in-dash 6-CD changer	■			
AM/FM/CD audio system		■	■	
Bose® audio system with AM/FM/CD			□	■
Tri-Zone Entertainment System with dual head				
restraint-mounted 7-inch monitors, remote control				
and two wireless headphones				□
SiriusXM Satellite Radio ¹		■	■	■
MP3/WMA CD playback capability	■	■	■	■
DVD video playback capability				■
Auxiliary audio input jack	■			
Auxiliary audio/video input jacks		■	■	■
Rear auxiliary audio/video input jacks				□
USB connection port for iPod® interface and other				
compatible devices		■	■	■
Streaming audio via Bluetooth® wireless technology				■
Six speakers	■	■	■	■
13 Speakers, including Bose® Acoustic Waveguide				
technology			□	■
Radio Data System (RDS)		■	■	■
Speed-sensitive volume control		■	■	■
Illuminated steering wheel-mounted audio controls	■	■	■	■

Safety/Security	S	SV	SL	Platinum
Nissan Advanced Air Bag System (AABS) with dual-				
stage supplemental front air bags with seat belt and				
occupant-classification sensors	■	■	■	■
Driver and front passenger seat-mounted side-				
impact supplemental air bags	■	■	■	■
Roof-mounted curtain side-impact supplemental air				
bags with rollover sensor for outboard occupant head				
protection for all three rows	■	■	■	■
Vehicle Dynamic Control (VDC) with Traction Control				
System (TCS)	■	■	■	■
Active Brake Limited Slip (ABLS)	■	■	■	■
3-point ALR/ELR passenger seat belt system (ELR				
for driver)	■	■	■	■
Front seat belts with pretensioners and load limiters	■	■	■	■
Adjustable front, outboard 2nd- and 3rd-row				
head restraints	■	■	■	■
LATCH System (Lower Anchors and Tethers				
for Children)	■	■	■	■
Zone Body construction with front and rear				
crumple zones	■	■	■	■
Hood-buckling creases, energy-absorbing steering				
column and pipe-style steel side-door guard beams	■	■	■	■
Tire Pressure Monitoring System (TPMS) with				
Easy-Fill Tire Alert	■			
Tire Pressure Monitoring System (TPMS) with indi-				
vidual tire pressure display and Easy-Fill Tire Alert		■	■	■
Nissan Vehicle Immobilizer System	■	■	■	■
Vehicle Security System	■	■	■	■

PACKAGES

□ SV/SL Trailer Tow Package
Tow hitch receiver with 7-pin wiring harness

□ SL Premium Package
Dual Panorama Moonroof
Tow hitch receiver with 7-pin wiring harness
Bose® audio system with AM/FM/CD
13 Speakers, including Bose® Acoustic Waveguide technology
120-volt AC power outlet

□ Platinum Premium Package
Dual Panorama Moonroof
Tri-Zone Entertainment System with dual head restraint-mounted 7-inch
monitors, remote control and two wireless headphones
Rear auxiliary audio/video input jacks

This brochure is intended for general descriptive and informational purposes only. It is subject to change and does not constitute an offer, representation or warranty (express or implied) by Nissan North America, Inc. Interested parties should confirm the accuracy of any information in this brochure as it relates to a vehicle directly with Nissan North America, Inc., before relying on it to make a purchase decision. Nissan North America, Inc., reserves the right to make changes, at any time, without prior notice, in prices, colors, materials, equipment, specifications, and models and to discontinue models or equipment. Due to continuous product development and other pre- and post-production factors, actual vehicle, materials and specifications may vary from this brochure. Some vehicles shown with optional equipment. See the actual vehicle for complete accuracy. Availability and delivery times for particular models or equipment may vary. Specifications, options and accessories may differ in Hawaii, U.S. territories and other countries. For additional information on availability, options or accessories, see your Nissan dealer or contact Nissan North America, Inc.

DIMENSIONS/CAPACITIES/WEIGHTS/MPG

Dimensions – Inches

Exterior	
Wheelbase	114.2
Overall length	197.2
Overall width	77.2
Overall height without roof rack	69.6
Overall height with roof rack	70.2
Track width	65.7

Interior (front/2nd row/3rd row)	
Head room without moonroof	42.2/39.4/37.8
Head room with moonroof	41.1/38.5/36.5
Leg room	42.3/41.7/30.7
Hip room	56.8/56.1/42.0
Shoulder room	60.7/60.4/57.1

Cargo	
Maximum length	78.9
Maximum width	45.9
Maximum height	31.4

Capacities

Seating capacity	7
Interior passenger volume (cu. ft.)	157.8
Cargo capacity with 2nd row upright, 3rd row upright (cu. ft.)	16.0
Cargo capacity with 2nd row upright, 3rd row folded flat (cu. ft.)	42.4-47.8
Cargo capacity with 2nd row folded flat, 3rd row folded flat (cu. ft.)	79.8
Fuel tank (gals.)	19.5
Maximum towing capacity (lbs.)	5,000

Curb Weights – Lbs.

Base Total	S	SV	SL	Platinum
2WD	4,149	4,170	4,205	4,330
4WD	4,290	4,312	4,346	4,471

2013 EPA Fuel Economy Estimates

City/Hwy MPG	
2WD	20/26
4WD	19/25

Actual mileage may vary with driving conditions – use for comparison only.

Buying and owning a Nissan is like driving one: quick, convenient, confidence-inspiring.



Nissan Motor Acceptance Corporation. Whether you're buying or leasing, you'll find attractive rates and flexible terms to make your purchase more accessible.

New Vehicle Limited Warranties. Protection for your new Nissan includes 3-year/36,000-mile basic coverage and 5-year/60,000-mile powertrain coverage. Terms, conditions and exclusions apply. See Warranty Information Booklet for complete details.

Security+Plus.* For additional peace of mind, a variety of extended service plans lets you tailor the coverage to your driving habits.

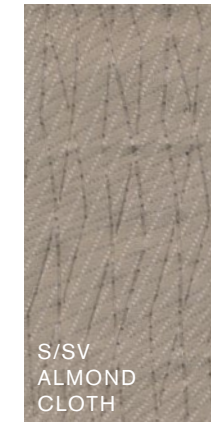
Maintenance+Plus.* This extended plan ensures your Nissan will receive up to 17 different services and over 33 different inspection items at each visit, using the most up-to-date diagnostic equipment available.

Genuine Nissan Parts. When it comes time for service, any necessary replacement parts will be made using Genuine Nissan new or remanufactured parts, or Nissan-approved parts. And they're the only parts to carry Nissan's factory-backed limited warranty.

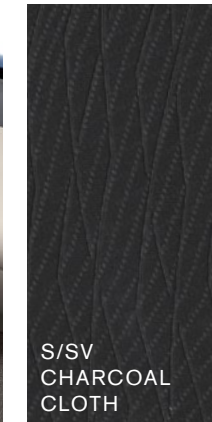
Nissan's philosophy toward the environment, "Seeking a symbiosis of people, vehicles and nature," describes our ideal for a sustainable mobile society, now and in the future. We launched the Nissan Green Program with specific objectives to realize this goal, and we are pursuing it energetically. For more information, log on to NissanUSA.com/green



FABRIC SELECTIONS



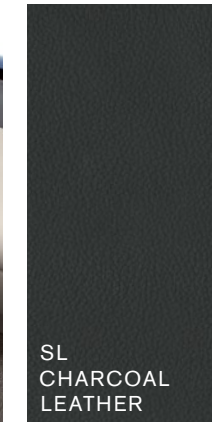
S/SV
ALMOND
CLOTH



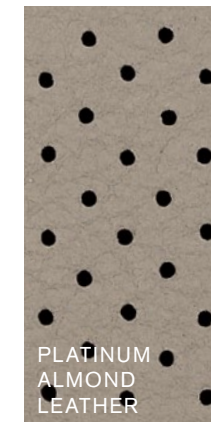
S/SV
CHARCOAL
CLOTH



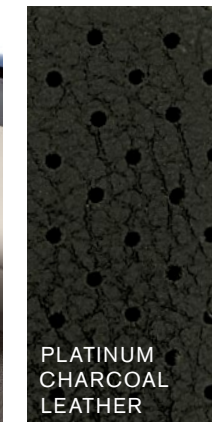
SL
ALMOND
LEATHER



SL
CHARCOAL
LEATHER



PLATINUM
ALMOND
LEATHER



PLATINUM
CHARCOAL
LEATHER



Nissan. Innovation that excites.™

NISSAN PATHFINDER®

Shouldn't you drive something you love? Absolutely. And that's what inspires our innovation. We look at every part of your drive and ask how can we make this better, smarter and more fun. So when you get in your new Pathfinder, you'll feel how exciting the answers can be:

Ready for tough terrain. With intuitive 4WD, Pathfinder gives you the capability you need with class-exclusive choice of 2WD, Auto and 4WD Lock modes.¹

3 rows of flexibility. With the EZ Flex™ Seating System's LATCH AND GLIDE™ technology, the right side of the 2nd row glides and tilts forward for 3rd row access, even with a child seat safely strapped in.²

Parking made simple. With Pathfinder's available class-exclusive Around View® Monitor, you get a virtual 360° bird's-eye view to help snag that space.³

Efficiency expert. Pathfinder is as fuel-efficient as it is capable, with best-in-class fuel economy in city (20 MPG), combined (22 MPG) and highway (26 MPG).⁴

And follow Nissan on:



SHIFT_

visit NissanUSA.com/pathfinder

¹Ward's Large Cross/Utility Market Segmentation. MY13 Pathfinder vs. 2012 Large Cross/Utility Class. ²Slide function should not be performed with the CRS occupied. ³Parking aid/convenience feature. Cannot completely eliminate blind spots. May not detect every object and does not warn of moving objects. Always check surroundings before moving vehicle. Not a substitute for proper backing procedures. Always turn to check what is behind you before backing up. ⁴ EPA fuel economy estimate of 20 city and 26 highway MPG for MY13 Pathfinder 2WD. Actual mileage may vary with driving conditions – use for comparison purposes only. Facebook® is a registered trademark of Facebook, Inc. Twitter® is a registered trademark of Twitter, Inc. YouTube® is a registered trademark of Google Inc.