



Innovation  
that excites

2015  
**JUKE**<sup>®</sup>

**WELCOME TO THE 2015 NISSAN JUKE<sup>®</sup> DIGITAL BROCHURE**

Full of images, feature stories, and all the specification and trim level information you need to help select your JUKE<sup>®</sup>

[Click here](#) to sign up for news and updates on the 2015 JUKE<sup>®</sup>.







**WHAT IF\_**

## **YOU COULD HAVE A SPORTS CAR, AN SUV, AND A THRILL RIDE ALL IN ONE?**

It's a lot to ask, but JUKE® delivers big with a high ride, quick response, customization on the fly, and a distinct ability to turn heads. This unique sport cross gives you serious boost along with efficiency, and an available, innovative torque vectoring All-Wheel Drive system that actually turns power into grip. Want style? You can change things up with color accents, inside and out, to make it unique to you. With JUKE®, you really can have it all.



#### Center Console

**Ready to ride?** Inside JUKE®, you'll find a pulse-raising center console inspired by the radical lines of an Italian sport bike. Prepare for the ride of your life.

#### Hooded Gauges

The sport bike-inspired circular gauges with hood cover add an extra-sporty look to the instrument panel.

#### Sport-bolstered Seats

Special seat bolsters help hold your body in place during active driving, and add a little style to the ride.

#### Colored Door Finishers

Colored door finishers help keep your style flowing throughout the interior. Available in red or silver.





**ACCENTS ARE  
A TURN-ON.**



**WELCOME TO THE  
JUKE® COLOR STUDIO.**

**Imagine the excitement you'd feel knowing that no one else has a ride like yours.** Rarity makes everything more desirable. With JUKE® Color Studio, brought to life by Genuine Nissan Accessories, you can make your JUKE® one-of-a-kind. Choose from a large selection of accents and finishers for your interior and exterior. They include your choice of color for side mirror caps to door handle covers, to rear roof spoiler, and more, along with color-coordinated 17" alloy wheels. It's a uniquely exciting experience. Stand out. Be desired.

Nissan JUKE® SL shown in Super Black with Orange JUKE® Color Studio accessories.





**COLOR LEGEND**

available colors



1] Yellow 2] Orange 3] Red 4] Electric Blue 5] Black Purple 6] Carbon-fiber Look  
7] Piano Black 8] Matte Black 9] White To see more, go to: [NissanUSA.com/jukecolorstudio](http://NissanUSA.com/jukecolorstudio)



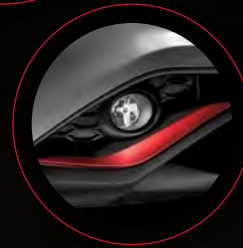
Nissan JUKE® SL AWD shown in Solar Yellow with Matte Black and Yellow JUKE® Color Studio accessories.







Headlight Trim Rings



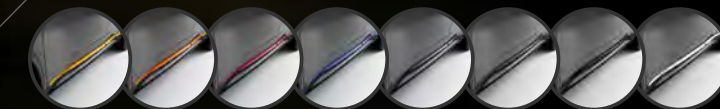
Front and Rear Bumper Accents



Door Handle Covers



Side Door Sills



Interior Inserts



Floor Mats





## POWER THE ROAD LIKE A PRO.

**1.6-L Direct Injection Gasoline (DIG™) Turbo Engine** – If you could design an engine to provide the ideal balance of efficiency and power, this would be it. Turbo boost gives you more than enough passing power when you need it, while the compact engine design and two-level direct injection system deliver fuel-sipping economy when you don't.

**Xtronic CVT® (Continuously Variable Transmission) with Sport Mode** – Smooth as butter and fun to drive. Unlike traditional automatic transmissions, JUKE®'s CVT transmission eliminates the need for gear-hunting and delivers a seamless wave of power. In case you miss the feeling of gears, you can engage Sport mode and bring it right back.

# 188HP



**Nissan JUKE® SL AWD** shown in Super Black with White JUKE® Color Studio accessories (17" Alloy Wheels and Center Caps, Rear Roof Spoiler, Side Mirror Caps, Door Handle Covers, Side Door Sills, Headlight Trim Rings, Front and Rear Bumper Accents, and Hatch Handle Finishers).



## NISSAN TORQUE VECTORING ALL-WHEEL DRIVE LEFT OR RIGHT, THE POWER IS ON YOUR SIDE.

Instead of traditional All-Wheel Drive (AWD) systems that only distribute power from front to back, the torque vectoring AWD that's available on JUKE® adjusts power side-to-side to the rear wheels. When cornering, this means the outside rear wheel gets more power, helping you rotate into the curve and accelerate out.

### Torque Vectoring

In a turn, this multi-sensor system automatically transfers rear-wheel power to the left or right, depending on which needs it, so any change in direction can be performed more smoothly and securely.





# 35.9 CUBIC FEET OF STORAGE<sup>1</sup>

## PACK IN THE UNEXPECTED.

The increased roominess inside JUKE<sup>®</sup> is quite surprising, and much welcomed. Contributing to its space and flexibility is the under-floor storage (FWD models only), allowing for extra space that is out of sight. With the second-row seats up, there is plenty of space in back for large luggage. Fold the seats down and you can create a flat cargo floor.<sup>1</sup>



### Flat Cargo Floor

Longer items are far easier to store on a flat surface. Fold the second-row seats down to create a flat floor surface. And for items you want hidden, you'll find a covered storage area under the cargo floor (FWD models only).



### Under-floor Storage (FWD models only)

Large luggage fits surprisingly well inside JUKE<sup>®</sup>. Simply uncover the under-floor storage, and there is ample space for your gear behind the second-row seats.<sup>1</sup>



Ramp up the refinement. Premium touches make every drive a little more special. The standard Nissan Intelligent Key<sup>®</sup> lets you lock and unlock the doors without taking the key out of your pocket. And with standard Push Button Ignition, Nissan Intelligent Key<sup>®</sup> provides one less step between you and driving.

Nissan JUKE<sup>®</sup> SL shown in Black/Red Leather with Red Center Console and Door Trim.

<sup>1</sup>Cargo shown for display purposes only. Cargo and load capacity limited by weight and distribution. Always secure all cargo. Heavy loading of the vehicle with cargo, especially on the roof, will affect the handling and stability of the vehicle.



## NISSAN I-CON SYSTEM

# CHANGE YOUR MOOD ON THE FLY.

JUKE®'s available I-CON system lets you change up your ride with the push of a button. Whatever mood you're in, JUKE® has a mode for it. You can custom-tailor your drive, adjust the climate, and keep stats on your performance, all while you're out and about.



**Performance Expert.** Get torque, boost, or efficiency right when you want it. In Normal mode, you'll find the perfect combination of performance and efficiency. Switch to Sport mode and immediately feel the steering, transmission (Xtronic CVT® only), and throttle response adjust for more responsive driving. And when it's time to steady your pace, hit the Eco mode button to get the most out of every fill-up.

Shown in  
D-mode Interface



**Double Agent.** In addition to ride style, the I-CON system lets you control interior comfort. Simply switch from D-mode to the Climate interface, and the display changes over to all the selections you need to make the cabin as toasty or cool as you like.

**Stats Keeper.** Stay up on your performance stats through the I-CON drive computer. It stores information about everything from maximum G-force to trip mileage to daily fuel economy. The more information you have, the smarter you'll drive.<sup>1,2</sup>



Shown in  
Climate Interface



<sup>1</sup>Information displayed is dependent on how vehicle is equipped. <sup>2</sup>Driving is serious business and requires your full attention. If you have to use the feature while driving, exercise extreme caution at all times so full attention may be given to vehicle operation.



NissanConnect<sup>SM</sup>

## YOUR WORLD, AT YOUR FINGERTIPS.

With NissanConnect<sup>SM</sup> with Navigation and Mobile Apps, your JUKE<sup>®</sup> becomes your smartphone's best friend. Which means no more separation anxiety for you. Because now, your own hand-picked music, Facebook<sup>®</sup> news feed, and more all come along for the ride, working seamlessly together through your smartphone and JUKE<sup>®</sup>'s 5.8-inch color touch-screen. And it keeps on getting better: the basic app package is included for the first three years.<sup>1</sup>



Available on the  
**App Store**



ANDROID APP ON  
**Google play**

Your Nissan<sup>®</sup> JUKE<sup>®</sup> also keeps you in the loop with available Voice Recognition, hands-free text messaging assistant,<sup>2</sup> Bluetooth<sup>®</sup> hands-free calling and streaming audio,<sup>3</sup> plus an iPod<sup>®</sup>/USB input.<sup>4</sup>

Click the button to discover everything you can accomplish using NissanConnect<sup>SM</sup> with Navigation and Mobile Apps.<sup>1</sup>  
Or go to [bit.ly/nissanconnect](http://bit.ly/nissanconnect)

<sup>1</sup>Driving is serious business. Only use NissanConnect<sup>SM</sup> services when safe to do so. Subscription Agreement required. Compatible smartphone required. Not all app features are available for all models. Some apps have late availability. May require dealer service visit or software upgrade to activate. Never program while driving. GPS mapping may not be detailed in all areas or reflect current road status. Cellular network not available in all areas. Cellular network, apps, and services, including Google<sup>®</sup> services, are provided by independent companies not within Nissan's control and may require subscription and owner consent to activate. Should provider terminate/restrict service, service may be terminated without notice or liability to Nissan and/or its agents. Nissan not responsible for any equipment or app replacement/upgrades, or associated costs, that may be required for continued operation. Terms and conditions of Subscription Agreement apply. 36-month trial period starts on vehicle sale date; subsequently a paid subscription is required at the then current rate (excludes Pandora<sup>®</sup>). Standard text rates and/or data usage may apply. See retailer and check [www.NissanUSA.com/connect](http://www.NissanUSA.com/connect) for details. <sup>2</sup>Use the text messaging feature after stopping your vehicle in a safe location. If you have to use the feature while driving, exercise extreme caution at all times so full attention may be given to vehicle operation. Compatible smartphone required. Standard text rates and/or data usage may apply. <sup>3</sup>Availability of specific features is dependent upon the phone's Bluetooth<sup>®</sup> support. Please refer to your phone Owner's Manual for details. Bluetooth<sup>®</sup> word mark and logos are owned by Bluetooth SIG, Inc., and any use of such marks by Nissan is under license. <sup>4</sup>Driving is serious business and requires your full attention. If you have to use the connected device while driving, exercise extreme caution at all times so full attention may be given to vehicle operation. iPod<sup>®</sup> is a registered trademark of Apple, Inc. All rights reserved. iPod<sup>®</sup> not included. The App Store<sup>®</sup> logo is a registered trademark of Apple, Inc. All rights reserved. Facebook<sup>®</sup> is a registered trademark of Facebook, Inc. Google<sup>®</sup> and the Google<sup>®</sup> Play logo are registered trademarks of Google Inc. iHeartRadio<sup>™</sup> is a trademark of iHeart Media. Pandora<sup>™</sup> is a registered trademark of Pandora Media. The Sirius<sup>®</sup>, XM<sup>®</sup>, and SiriusXM<sup>®</sup> names and all related marks and logos are trademarks of Sirius XM Radio Inc.





## NISSAN AROUND VIEW MONITOR

# IT'S GOT YOUR BACK, AND THE REST OF YOU TOO.

What if parallel parking was easier? A rearview camera is great when backing up – but when it comes to parking, it's nice to see more than just what's directly behind you. That's why JUKE® offers Around View® Monitor.<sup>1</sup> Four cameras give you a virtual 360° bird's-eye view of your vehicle,<sup>2</sup> with selectable split-screen close-ups of the front, rear, and curbside views, so you can get a better look. And since all objects aren't stationary (shopping carts, we're talking to you), Moving Object Detection helps keep an eye around your JUKE® and can warn you about moving objects detected in your vicinity.<sup>3</sup>

<sup>1</sup>Parking aid/convenience feature. Cannot completely eliminate blind spots. May not detect every object and does not warn of moving objects. Always check surroundings and turn to look behind you before moving vehicle. <sup>2</sup>Virtual composite 360° view. <sup>3</sup>MOD cannot completely eliminate blind spots and may not detect every object. MOD operates at vehicle speeds below 5 mph. Always check surroundings and turn to look behind you before moving vehicle.

### DON'T BUMP YOUR NOSE.

In Drive, the display gives you both a front and overhead view, so you know just how far to pull up – without going too far.

### COMPLETE THE PICTURE.

Located under your driver's side mirror, this camera helps round out your virtual 360° bird's-eye view, whether you're in Drive or Reverse.

### SPARE YOUR WHEELS.

In Drive or Reverse, you can push the camera button to switch out the overhead for a side view. A great help for seeing how close you are to the curb.



### LOOK OUT BELOW.

In Reverse, the display helps you see what's directly behind you, while the overhead view helps with smaller objects that might be hidden below your window.





## NISSAN SAFETY SHIELD® PHILOSOPHY

# INNOVATION THAT LOOKS OUT FOR YOU.

Wouldn't it be cool if you had the confidence you need for every part of your drive? The Nissan Safety Shield® philosophy is a comprehensive approach to safety that guides the engineering and development of every vehicle we make.

### MONITOR

Smart technologies help monitor conditions. Like a standard rearview camera that helps you see something directly behind you, or a system that helps ensure you're travelling on properly inflated tires.

**Tire Pressure Monitoring System<sup>1</sup>**

**RearView Monitor<sup>2</sup>**

**Available Around View® Monitor<sup>2</sup>**

**Available Moving Object Detection<sup>3</sup>**

### RESPOND

Whether you need to hit the brakes hard or maneuver around an unexpected obstacle, these standard technologies help you respond to a potentially harmful situation.

**Traction Control System** helps reduce wheelspin in low-traction situations.

**Anti-lock Braking System** helps you maintain steering around obstacles while braking heavily.

**Electronic Brake force Distribution** sends extra force to the rear brakes when you have the additional weight of passengers or cargo in the back.

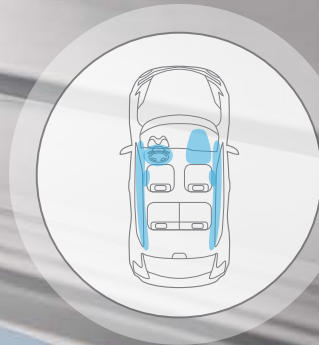
**Brake Assist** helps apply maximum braking force if it detects hard braking and senses you are in an emergency situation.<sup>4</sup>

### PROTECT

When a collision is unavoidable, Nissan's Zone Body construction helps absorb the impact while the advanced seat belt and air bag systems help protect passengers.

**Six Standard Air Bags<sup>5</sup>**

**LATCH System (Lower Anchors and Tethers for CHildren)**



### 6 Standard Air Bags<sup>5</sup>

Nissan Advanced Air Bag System with dual-stage supplemental front air bags with seat belt and occupant-classification sensors help protect you and your loved ones in case of collision. Also featured, front seat-mounted side-impact supplemental air bags and roof-mounted curtain side-impact supplemental air bags help provide head protection for outboard occupants.<sup>5</sup>



### Vehicle Dynamic Control<sup>6</sup>

A safety system to help keep you on your steered path, VDC senses if your vehicle starts to oversteer or understeer. To help you maintain control, engine power can be reduced and/or braking pressure can be applied to specific wheels.<sup>6</sup>



Nissan safety engineers have dedicated thousands of hours to evaluating hundreds of child restraints in Nissans. The result: An industry first, The Snug Kids® Child Safety Seat Fit Guide. This guide lists child seats that fit the rear seats of Nissan vehicles, as well as offers invaluable tips on correct installation. Look for the latest Fit Guide at [NissanUSA.com/SnugKids](http://NissanUSA.com/SnugKids). Looking for the right CRS for your Nissan? See how Snug Kids® can help at [bit.ly/NissanSnugKids](http://bit.ly/NissanSnugKids)

<sup>1</sup>TPMS is not a substitute for regular tire pressure checks. <sup>2</sup>Parking aid/convenience feature. Cannot completely eliminate blind spots. May not detect every object and does not warn of moving objects. Always check surroundings and turn to look behind you before moving vehicle. <sup>3</sup>MOD cannot completely eliminate blind spots and may not detect every object. MOD operates at vehicle speeds below 5 mph. Always check surroundings and turn to look behind you before moving vehicle. <sup>4</sup>Brake Assist is only an aid to assist the driver and is not a collision warning or avoidance device. It is the driver's responsibility to be in control of the vehicle at all times. <sup>5</sup>Air bags are only a supplemental restraint system; always wear your seat belt. Even with the occupant-classification sensor, rear-facing child restraints should not be placed in the front-passenger's seat. All children 12 and under should ride in the rear seat properly secured in child restraints, booster seats, or seat belts according to their size. Air bags will only inflate in certain accidents; see your Owner's Manual for more details. Inflated air bags shown for illustration purposes only; actual coverage area may differ. Air bags deflate after deployment. <sup>6</sup>VDC, which should remain on when driving except when freeing the vehicle from mud or snow, cannot prevent accidents due to abrupt steering, carelessness, or dangerous driving techniques.



# NISMO® PASSION WITHOUT A REDLINE FOR OVER 30 YEARS.

**From the racetrack:** There is no greater test than racing. To compete is a serious challenge – to win, even more so. Since 1984, NISMO® has been propelled by maverick engineering with one goal in mind: ultimate Nissan performance. Along the way, NISMO® has taken on and beaten many of the world's greatest marques, creating a legend that many may envy, but few will ever match. So when you see a NISMO® badge on a vehicle, you'll know it's something extraordinary.

**To your driveway:** As passionate as we are about performance, we are also dedicated to the idea that the joy of owning and driving a NISMO® vehicle should be available to every enthusiast. So we are pleased to offer a wide range of products, each offering a unique look, special features, and a singularly inspiring driving experience.



JUKE® NISMO® RS



370Z® NISMO®



GT-R® NISMO®

1984

PRESENT



1985 WEC JAPAN    1986 LE MANS 24H    1988 JAPAN TOURING CAR    1990 JSPC    1990 LE MANS 24H    1990 JTC    1991 SPA 24H    1992 1000 LAKES RALLY    1992 DAYTONA WIN    1992 JSPC    1996 LE MANS    1998 LE MANS 24H    1998 LE MANS 3RD    1999 BTCC PRIMERA    2004 SGT    2008 SGT    2008 SGT CHAMPION    2011 FIA GT1 CHAMPION    2011 FIA GT1    2014 ZEOD







## DIAL UP THE STYLE.

Step into **JUKE<sup>®</sup> NISMO<sup>®</sup>** and experience next-level design born from an illustrious racing heritage. With smoked front combination lights, stiffer competition-tuned suspension, and a **NISMO<sup>®</sup> Alcantara<sup>®</sup>** and leather-wrapped steering wheel, you'll experience what so many others already have: It's not just a performance car, it's a **NISMO<sup>®</sup>**.

### Track-inspired Interior

- **NISMO<sup>®</sup>** sport bucket front seats with embroidered synthetic suede seat trim
- **NISMO<sup>®</sup> Alcantara<sup>®</sup>** and leather-wrapped steering wheel with 12 o'clock center mark
- **NISMO<sup>®</sup>** tachometer with red face
- Black headliner
- Smoked Gray center console and door trim
- Paddle shifters (AWD CVT models)

### Technology

- NissanConnect<sup>SM</sup> with Navigation and Mobile Apps, including 5.8" color touch-screen monitor<sup>1</sup>
- Voice Recognition for audio and navigation
- NissanConnect<sup>SM</sup> with Mobile Apps<sup>1</sup>
- Around View<sup>®</sup> Monitor with Moving Object Detection<sup>2</sup> (MOD)
- SiriusXM<sup>®</sup> Traffic and Travel Link<sup>®3</sup>
- Nissan Intelligent Key<sup>®</sup> with Push Button Ignition

### Design

- LED Daytime Running Lights
- Red side mirror caps
- Body-color fender lip moldings
- Red body striping
- Smoked front combination lights
- Modified front fascia with larger grille
- Resculpted side sills
- Unique body-color rear roof spoiler
- Rear fascia diffuser

### Competition-tuned Handling and Responsiveness

- Stiffer springs and dampers
- **NISMO<sup>®</sup>**-tuned close-ratio 6-speed manual transmission (FWD 6MT models), or **NISMO<sup>®</sup>**-tuned Xtronic CVT<sup>®</sup> with Sport mode featuring seven programmed 'gears' and paddle shifters (AWD CVT models)
- Torque vectoring AWD (AWD CVT models)
- 18" **NISMO<sup>®</sup>** 10-spoke aluminum-alloy wheels
- P225/45R18 summer tires

<sup>1</sup>Driving is serious business. Only use NissanConnect<sup>SM</sup> services when safe to do so. Subscription Agreement required. Compatible smartphone required. Not all app features are available for all models. Some apps have late availability. May require dealer service visit or software upgrade to activate. Never program while driving. GPS mapping may not be detailed in all areas or reflect current road status. Cellular network not available in all areas. Cellular network, apps, and services, including Google<sup>®</sup> services, are provided by independent companies not within Nissan's control and may require subscription and owner consent to activate. Should provider terminate/restrict service, service may be terminated without notice or liability to Nissan and/or its agents. Nissan not responsible for any equipment or app replacement/upgrades, or associated costs, that may be required for continued operation. Terms and conditions of Subscription Agreement apply. 36-month trial period starts on vehicle sale date; subsequently a paid subscription is required at the then current rate (excludes Pandora<sup>®</sup>). Standard text rates and/or data usage may apply. See retailer and check [www.NissanUSA.com/connect](http://www.NissanUSA.com/connect) for details. <sup>2</sup>AVM with MOD cannot completely eliminate blind spots and may not detect every object. MOD operates at vehicles speeds below 5 mph. Always check surroundings and turn to look behind you before moving vehicle. <sup>3</sup>Required SiriusXM<sup>®</sup> Satellite Radio, SiriusXM<sup>®</sup> Traffic and SiriusXM<sup>®</sup> Travel Link<sup>®</sup> services subscriptions sold separately and are continuous until you call SiriusXM to cancel. Installation costs, one-time activation fee, other fees and taxes will apply. SiriusXM<sup>®</sup> Travel Link services available in select markets. Satellite Radio U.S. service and SiriusXM<sup>®</sup> Travel Link Services available only to those 18 or older in the 48 contiguous states and D.C. Fees and programming subject to change. Subscriptions governed by Customer Agreement available at [siriusxm.com](http://siriusxm.com). ©2014 Sirius XM Radio Inc. Sirius<sup>®</sup>, XM<sup>®</sup> and all related marks and logos are trademarks of Sirius XM Radio Inc. Alcantara<sup>®</sup> is a registered trademark of Alcantara S.p.A. Corporation.



**nismo**<sup>®</sup>  
**RS**

**215**  
HP<sup>1</sup>

**NISSAN JUKE<sup>®</sup> NISMO<sup>®</sup> RS**  
**INTENSELY CHARGED**  
**FOR THE SPORT OF DRIVING**

**JUKE<sup>®</sup> NISMO<sup>®</sup> RS** – the ultimate performance crossover. More horsepower, sharper handling, upgraded brakes, a performance transmission, and an overall lower, leaner, meaner attitude.



**Interior features**

- Recaro<sup>®</sup> sport bucket front seats with embossed logo and integrated head restraints
- Recaro<sup>®</sup> black synthetic suede center fabric and red leather bolsters
- Carbon-fiber appearance interior trim
- Synthetic suede stitched instrument panel hood

**Performance Upgrades**

- NISMO<sup>®</sup>-tuned 1.6-liter Direct Injection Gasoline (DIG<sup>™</sup>) turbo engine
- Upgraded performance close-ratio 6-speed manual transmission (FWD 6MT models) or Xtronic CVT<sup>®</sup> featuring Sport mode with eight programmed 'gears' (AWD CVT models)
- Paddle shifters (AWD CVT models)
- Front helical limited-slip differential (FWD 6MT models)
- Torque Vectoring All-Wheel Drive (AWD CVT models)
- NISMO<sup>®</sup>-tuned exhaust system
- Larger vented front disc brakes and vented rear disc brakes, upgraded brake pads, and red brake calipers



## CHOOSE YOUR TRIM LEVEL

**S**

- 1.6-liter Direct Injection Gasoline (DIG™) turbo 4-cylinder engine
- Front-Wheel Drive (FWD) or torque vectoring All-Wheel Drive (AWD)
- Xtronic CVT® (Continuously Variable Transmission) with Sport mode
- 17" 5-split spoke aluminum-alloy wheels
- Projector halogen low-beam headlights
- Automatic off headlights
- LED signature accent lights
- Dual power body-color side mirrors with integrated turn signals
- AM/FM/CD audio system with 5.0" color monitor
- NissanConnect™ with Mobile Apps
- Hands-free text messaging assistant<sup>1</sup>
- Streaming audio via Bluetooth® wireless technology<sup>2</sup>
- SiriusXM® Satellite Radio<sup>3</sup>
- USB connection port for iPod® interface and other compatible devices<sup>4</sup>
- Bluetooth® Hands-free Phone System<sup>2</sup>
- RearView Monitor
- Nissan Intelligent Key® with Push Button Ignition
- Power windows, power door locks and remote keyless entry
- Sun visors with vanity mirrors and extensions
- 60/40 Split fold-down rear seats
- Six standard air bags
- Vehicle Dynamic Control (VDC) with Traction Control System (TCS)



**SL**

### INCLUDES SV PLUS EQUIPMENT PLUS:

- NissanConnect™ with Navigation and Mobile Apps, including 5.8" color touch-screen monitor
- Voice Recognition for audio and navigation
- SiriusXM® Traffic and Travel Link®<sup>3</sup>
- Around View® Monitor with Moving Object Detection (MOD)
- Rockford Fosgate® ecoPUNCH™ audio system with 8" subwoofer and amplifier
- Six upgraded speakers
- Leather-appointed seats
- Heated front seats
- Leather-wrapped shift knob
- Automatic on/off headlights
- Fog lights



**SV**

### INCLUDES S EQUIPMENT PLUS:

- Power sliding glass moonroof
- Rear privacy glass
- Integrated Control (I-CON) system with Automatic Temperature Control (ATC)
- Premium cloth seat trim
- Front-passenger seatback pocket
- Leather-wrapped steering wheel



### KEY AVAILABLE PACKAGES:

- Cold Weather Package
- Tech Package

<sup>1</sup>Use the text messaging feature after stopping your vehicle in a safe location. If you have to use the feature while driving, exercise extreme caution at all times so full attention may be given to vehicle operation. Compatible smartphone required. Standard text rates and/or data usage may apply. <sup>2</sup>Availability of specific features is dependent upon the phone's Bluetooth® support. Please refer to your phone Owner's Manual for details. Bluetooth® word mark and logos are owned by Bluetooth SIG, Inc., and any use of such marks by Nissan is under license. <sup>3</sup>Required SiriusXM® Satellite Radio, SiriusXM® Travel Link® services subscriptions sold separately and are continuous until you call SiriusXM to cancel. Installation costs, one-time activation fee, other fees and taxes will apply. SiriusXM® Travel Link® services available in select markets. Satellite Radio U.S. service and SiriusXM® Travel Link® Services available only to those 18 or older in the 48 contiguous states and D.C. Fees and programming subject to change. Subscriptions governed by Customer Agreement available at [siriusxm.com](http://siriusxm.com). ©2014 Sirius XM Radio Inc. Sirius®, XM® and all related marks and logos are trademarks of Sirius XM Radio Inc. <sup>4</sup>Driving is serious business and requires your full attention. If you have to use the connected device while driving, exercise extreme caution at all times so full attention may be given to vehicle operation. iPod® is a registered trademark of Apple, Inc. All rights reserved. iPod® not included. ecoPUNCH™ is a trademark of Rockford Corporation. Rockford Fosgate® is a registered trademark of Rockford Corporation.



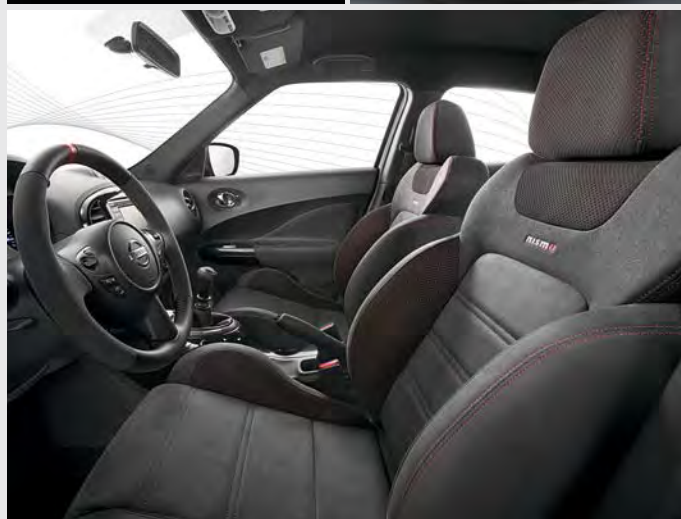
## CHOOSE YOUR TRIM LEVEL

**nismo**<sup>®</sup>

### NISMO<sup>®</sup>

#### INCLUDES S EQUIPMENT PLUS:

- NISMO<sup>®</sup>-tuned 6-speed manual transmission (FWD 6MT models) or NISMO<sup>®</sup>-tuned Xtronic CVT<sup>®</sup> with Sport mode featuring seven programmed 'gears' and paddle shifters (AWD CVT models)
- NISMO<sup>®</sup>-tuned suspension with increased spring and dampening rates
- 18" NISMO<sup>®</sup> 10-spoke aluminum-alloy wheels with P225/45R18 summer tires
- Smoked front combination lights
- LED Daytime Running Lights
- NISMO<sup>®</sup> front grille and badging
- NISMO<sup>®</sup> aerodynamic body kit – front and rear fascias, side sills, and rear roof spoiler
- Body-color fender lip moldings and high-gloss B-pillar finish
- NISMO<sup>®</sup> red side mirror caps
- NISMO<sup>®</sup> chrome exhaust finisher
- Rear privacy glass
- NissanConnect<sup>SM</sup> with Navigation and Mobile Apps, including 5.8" color touch-screen monitor
- Voice Recognition for audio and navigation
- SiriusXM<sup>®</sup> Traffic and Travel Link<sup>®1</sup>
- Around View<sup>®</sup> Monitor with Moving Object Detection (MOD)
- NISMO<sup>®</sup> tachometer
- Integrated Control (I-CON) system with Automatic Temperature Control (ATC)
- NISMO<sup>®</sup> sport bucket front seats with embroidered synthetic suede trim and signature red stitching
- NISMO<sup>®</sup> Alcantara<sup>®</sup> and leather-wrapped steering wheel
- NISMO<sup>®</sup> shift knob
- Smoked gray center console and door trim
- Black headliner
- Rockford Fosgate<sup>®</sup> ecoPUNCH<sup>™</sup> audio system with 8" subwoofer and amplifier
- Six upgraded speakers



### NISMO<sup>®</sup> RS

#### INCLUDES NISMO<sup>®</sup> EQUIPMENT PLUS:

- NISMO<sup>®</sup>-tuned 1.6-liter Direct Injection Gasoline (DIG<sup>™</sup>) turbo 4-cylinder engine
- NISMO<sup>®</sup>-tuned close-ratio 6-speed manual transmission with triple-cone synchros in 1st and 2nd gears (FWD 6MT models) or NISMO<sup>®</sup>-tuned Xtronic CVT<sup>®</sup> with Sport mode featuring eight programmed 'gears' and paddle shifters (AWD CVT models)
- NISMO<sup>®</sup>-tuned front helical limited-slip differential (FWD 6MT models)
- NISMO<sup>®</sup>-tuned torque vectoring All-Wheel Drive (AWD CVT models)
- Larger vented front disc brakes, vented rear disc brakes, upgraded brake pads, and red brake calipers
- Additional NISMO<sup>®</sup>-tuned suspension
- Additional body structure improvements
- NISMO<sup>®</sup>-tuned exhaust system
- NISMO<sup>®</sup> RS exterior badging
- Recaro<sup>®</sup> sport bucket front seats with embossed logo and integrated head restraints
- Carbon-fiber Look interior trim
- Synthetic suede stitched instrument panel hood



<sup>1</sup>Required SiriusXM<sup>®</sup> Satellite Radio, SiriusXM<sup>®</sup> Travel Link<sup>®</sup> services subscriptions sold separately and are continuous until you call SiriusXM to cancel. Installation costs, one-time activation fee, other fees and taxes will apply. SiriusXM<sup>®</sup> Travel Link<sup>®</sup> services available in select markets. Satellite Radio U.S. service and SiriusXM<sup>®</sup> Travel Link<sup>®</sup> Services available only to those 18 or older in the 48 contiguous states and D.C. Fees and programming subject to change. Subscriptions governed by Customer Agreement available at [siriusxm.com](http://siriusxm.com). ©2014 Sirius XM Radio Inc. Sirius<sup>®</sup>, XM<sup>®</sup> and all related marks and logos are trademarks of Sirius XM Radio Inc. Alcantara<sup>®</sup> is a registered trademark of Alcantara S.p.A. Corporation. ecoPUNCH<sup>™</sup> is a trademark of Rockford Fosgate. Recaro<sup>®</sup> is a registered trademark of Recaro North America Inc. Rockford Fosgate<sup>®</sup> is a registered trademark of Rockford Corporation.



Click the button to see short videos on  
Genuine Nissan Accessories in action.  
Or go to [bit.ly/juke\\_gnavideos](http://bit.ly/juke_gnavideos)

## GENUINE NISSAN ACCESSORIES. IMPRESS. CONNECT. PROTECT. ORGANIZE.

Every Genuine Nissan Accessory is custom-fit, custom-designed and durability-tested. Each one is backed by Nissan's 3-year/36,000-mile (whichever occurs first) limited warranty (if installed by dealer at the time of purchase),<sup>1</sup> and can be financed when installed by dealer at time of purchase.

- A. **Illuminated Kick Plates**  
For a grand entry every time.
- B. **NISMO® Carpeted Floor Mats**  
Designed to perform – and protect – beautifully.
- C. **Auto-dimming Rearview Mirror with HomeLink® and Compass Brights**  
On behind you? Here's the answer.
- D. **Interior Accent Lighting**  
20 colors. Choose one, or let them all cycle through.
- E. **17" Matte Black Alloy Wheels**  
Good guys wear black.
- F. **Armrest<sup>2</sup>**  
Flips down for comfort. Flips up for easy access.
- G. **Rear Cargo Cover<sup>2</sup> and Cargo Area Protector<sup>2</sup>**  
Protect your JUKE® from prying eyes – and muddy gear. (Sold separately.)
- H. **Chrome Hatch Accent**  
The perfect finishing touch for your JUKE®.

### Additional Accessories:

- Hatch Handle Finishers
- Lower Hatch Accent
- Chrome Body Side Moldings
- Chrome Door Handle Accents
- Stainless Steel Exhaust Finisher
- Carpeted Cargo Mat<sup>2</sup>
- And More

<sup>1</sup>Genuine Nissan Accessories are covered by Nissan's Limited Warranty on Genuine Nissan Replacement Parts, Genuine NISMO® S-Tune Parts, and Genuine Nissan Accessories for the longer of 12 months/12,000 miles (whichever occurs first) or the remaining period under the 3-year/36,000-mile (whichever occurs first) Nissan New Vehicle Limited Warranty. Terms and conditions apply. See Warranty Information Booklet for details. <sup>2</sup>Cargo shown for display purposes only. Cargo and load capacity limited by weight and distribution. Always secure all cargo. Heavy loading of the vehicle with cargo, especially on the roof, will affect the handling and stability of the vehicle. HomeLink® is a registered trademark of Gentex Corporation.

# ON A SCALE OF 10, BE AN 11.

For more information and to shop online for JUKE® Genuine Nissan Accessories, go to [bit.ly/juke\\_estore](http://bit.ly/juke_estore)



For more information and to shop online for Nissan Graphics, go to [NissanGraphics.com](http://NissanGraphics.com)

Nissan JUKE® SL shown in Cosmic Blue with 17" White Alloy Wheels, Rear Roof Spoiler, Headlight Trim Rings, Fog Lights (standard on SL trim), Front and Rear Bumper Accents (rear accents not shown), Side Mirror Caps, Door Handle Covers, Side Door Sills, Moonroof Wind Deflector, Side-window Deflectors, and Nissan Graphics.



# CHOOSE YOUR COLOR



You've decided which JUKE® you want, now here comes the best part: deciding what it's going to look like. Choose your favorite color and then pick from the available interiors based on the model of your choice.



Silver Metallic Center Console and Door Trim



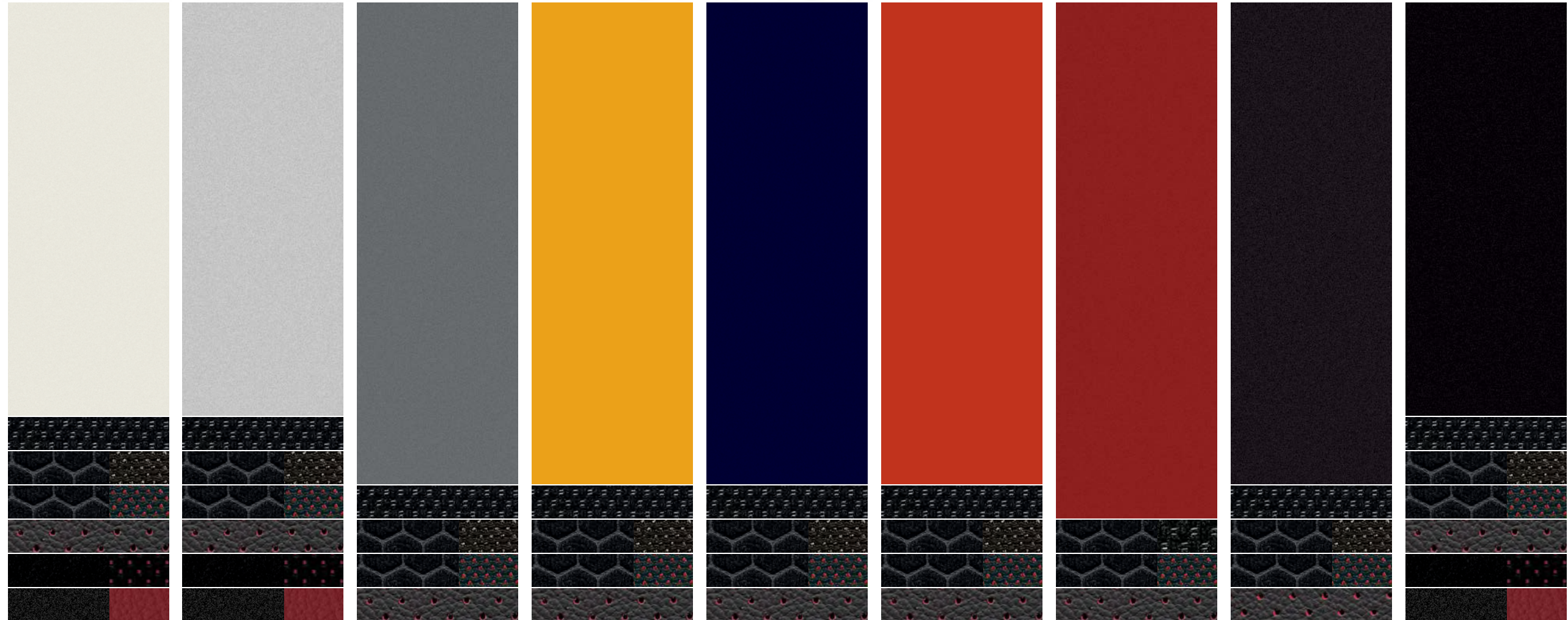
Red Center Console and Door Trim



NISMO® Smoked Gray Center Console and Door Trim

■ Standard

Nissan has taken care to ensure that the color swatches presented here are the closest possible representations of actual vehicle colors. Swatches may vary slightly due to viewing light or screen quality. Please see the actual colors at your local Nissan dealer.



	Pearl White <sup>1</sup> QAB					Brilliant Silver K23					Gun Metallic KAD					Solar Yellow EAV					Cosmic Blue RBR					Red Alert A20					Cayenne Red NAH					Bordeaux Black GAB					Super Black KH3									
	S	SV	SL	NISMO®	RS	S	SV	SL	NISMO®	RS	S	SV	SL	NISMO®	RS	S	SV	SL	NISMO®	RS	S	SV	SL	NISMO®	RS	S	SV	SL	NISMO®	RS	S	SV	SL	NISMO®	RS	S	SV	SL	NISMO®	RS	S	SV	SL	NISMO®	RS					
BLACK CLOTH W/SILVER TRIM	■					■					■					■					■					■					■					■					■					■				
PREMIUM BLACK CLOTH W/SILVER TRIM		■					■					■					■					■					■					■					■					■								
PREMIUM BLACK CLOTH W/RED TRIM			■					■					■					■					■					■					■					■					■							
BLACK/RED LEATHER W/SILVER TRIM				■					■					■					■					■					■					■					■					■						
BLACK/RED LEATHER W/RED TRIM					■					■					■					■					■					■					■					■					■					
NISMO® BLACK/RED CLOTH W/SMOKED GRAY TRIM					■					■					■					■					■					■					■					■					■					
RECARO® BLACK/RED LEATHER/SYNTHETIC SUEDE W/SMOKED GRAY TRIM					■					■					■					■					■					■					■					■					■					

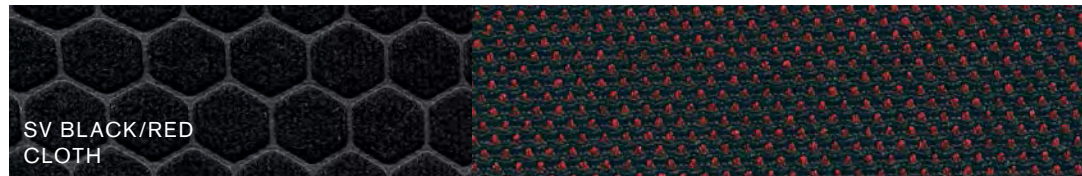
<sup>1</sup>Extra cost option. Recaro® is a registered trademark of Recaro North America, Inc.



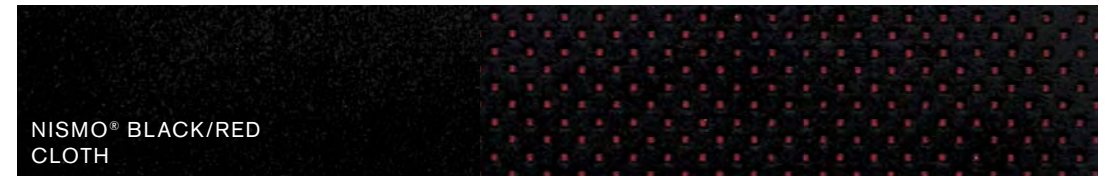
CHOOSE YOUR FABRIC



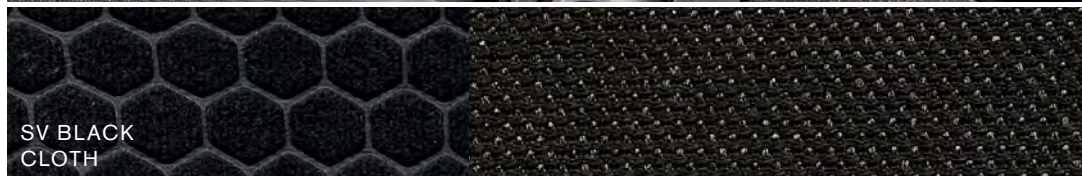
S BLACK  
CLOTH



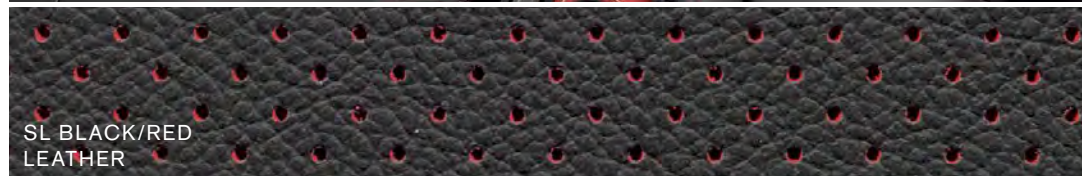
SV BLACK/RED  
CLOTH



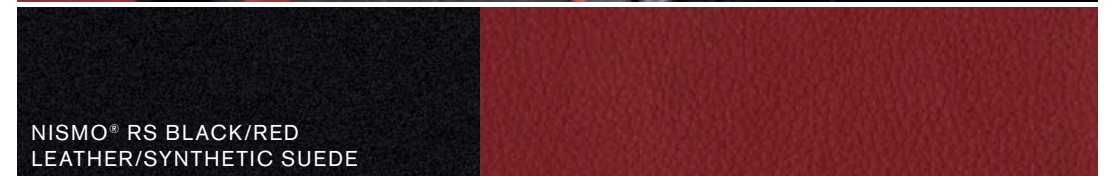
NISMO® BLACK/RED  
CLOTH



SV BLACK  
CLOTH



SL BLACK/RED  
LEATHER



NISMO® RS BLACK/RED  
LEATHER/SYNTHETIC SUEDE



SPECIFICATIONS

Engine	S	SV	SL	NISMO®	NISMO® RS
MR16DDT – 1.6-liter Direct Injection Gasoline (DIG™) DOHC 16-valve turbocharged 4-cylinder engine	■	■	■	■	
Horsepower – 188 hp @ 5,600 rpm					
Torque – 177 lb-ft @ 1,600 – 5,200 rpm					
NISMO®-tuned MR16DDT – 1.6-liter Direct Injection Gasoline (DIG™) DOHC 16-valve turbocharged 4-cylinder engine					■
Horsepower – 215 hp @ 6,000 rpm (FWD 6MT)					
211 hp @ 6,000 rpm (AWD CVT)					
Torque – 210 lb-ft @ 3,600 – 4,800 rpm (FWD 6MT)					
184 lb-ft @ 2,400 – 6,000 rpm (AWD CVT)					
Emissions – Tier 2, Bin 5 (LEV2 – ULEV in CA)	■	■	■	■	■
Continuously Variable Valve Timing Control System (CVTCS) on intake and exhaust valves	■	■	■	■	■
Nissan Direct Ignition System with double-tipped iridium spark plugs	■	■	■	■	■
Electronic drive-by-wire throttle	■	■	■	■	■

Drivetrain	S	SV	SL	NISMO®	NISMO® RS
Front-Wheel Drive (FWD)	■	■	■	■	■
Torque vectoring All-Wheel Drive (AWD)	□	□	□	□	□
Xtronic CVT® (Continuously Variable Transmission) with Sport mode (AWD)	■	■	■		
NISMO®-tuned close-ratio 6-speed manual transmission (FWD)				■	■
NISMO®-tuned Xtronic CVT® with Sport mode (AWD)				□	□
Paddle shifters (AWD)				□	□
NISMO®-tuned front helical limited-slip differential (FWD)					■

Brakes	S	SV	SL	NISMO®	NISMO® RS
11.7" Front vented disc/11.5" rear disc brakes	■	■	■	■	
12.6" Front vented disc/11.5" rear vented disc brakes with upgraded brake pads					■
4-wheel Anti-lock Braking System (ABS)	■	■	■	■	■
Electronic Brake force Distribution (EBD)	■	■	■	■	■
Brake Assist (BA)	■	■	■	■	■

■ Standard      □ Optional      [CW] Part of Cold Weather Package      [T] Part of Tech Package

Suspension/Steering	S	SV	SL	NISMO®	NISMO® RS
Independent strut front suspension	■	■	■	■	■
Torsion beam rear suspension (FWD)	■	■	■	■	■
Multi-link independent rear suspension (AWD)	□	□	□	□	□
Front and rear stabilizer bars	■	■	■	■	■
Vehicle-speed-sensitive electric power steering	■	■	■		
NISMO®-tuned vehicle-speed-sensitive electric power steering				■	
Additional NISMO®-tuned vehicle-speed-sensitive electric power steering					■
NISMO®-tuned suspension with increased spring and dampening rates				■	
Additional NISMO®-tuned suspension with increased spring and dampening rates					■

Wheels/Tires	S	SV	SL	NISMO®	NISMO® RS
17" x 7" 5-split spoke aluminum-alloy wheels	■	■	■		
18" x 7" NISMO® 10-spoke aluminum-alloy wheels				■	■
P215/55R17 all-season tires	■	■	■		
P225/45R18 summer tires				■	■

Exterior Features	S	SV	SL	NISMO®	NISMO® RS
Automatic off headlights	■	■		■	■
Automatic on/off headlights			■		
Projector halogen low-beam headlights	■	■	■	■	■
Smoked front combination lights				■	■
LED signature accent lights	■	■	■	■	■
LED Daytime Running Lights				■	■
Fog lights			■		
NISMO® front grille				■	■
NISMO® aerodynamic body kit – front and rear fascias, side sills and rear roof spoiler				■	■
Body-color fender lip moldings				■	■
High-gloss B-pillar finish				■	■
Dual power side mirrors	■	■	■	■	■
Heated side mirrors		[CW]			
NISMO® red side mirror covers				■	■
NISMO®-tuned engine					■
Red brake calipers					■
NISMO®-tuned exhaust system					■

Exterior Features (continued)	S	SV	SL	NISMO®	NISMO® RS
NISMO® chrome exhaust finisher				■	■
Rear privacy glass		■	■	■	■
Power sliding glass moonroof with one-touch open/close and tilt feature		■	■		
NISMO® badging				■	■
NISMO® RS badging					■

Comfort/Convenience	S	SV	SL	NISMO®	NISMO® RS
NissanConnectSM with Navigation and Mobile Apps, with 5.8" color touch-screen monitor and Voice Recognition for audio and navigation		[T]	■	■	■
SiriusXM® Traffic and Travel Link®1		[T]	■	■	■
NissanConnectSM with Mobile Apps	■	■	■	■	■
Hands-free text messaging assistant	■	■	■	■	■
Bluetooth® Hands-free Phone System²	■	■	■	■	■
RearView Monitor	■	■	□	□	□
Around View® Monitor with Moving Object Detection (MOD)		[T]	■	■	■
Drive computer with outside temperature display	■	■	■	■	■
NISMO® tachometer				■	■
Integrated Control (I-CON) system		■	■	■	■
Air conditioning	■	■	■	■	■
Automatic Temperature Control (ATC)		■	■	■	■
In-cabin microfilter	■	■	■	■	■
Cruise control with illuminated steering wheel-mounted controls	■	■	■	■	■
Power windows with driver's window one-touch auto-up/down	■	■	■	■	■
Power door locks with auto-locking feature	■	■	■	■	■
Nissan Intelligent Key® with Push Button Ignition	■	■	■	■	■
Tilt steering column	■	■	■	■	■
Variable intermittent windshield wipers	■	■	■	■	■
Intermittent rear wiper	■	■	■	■	■
Height-adjustable front seat belts	■	■	■	■	■
Sun visors with vanity mirrors and extensions	■	■	■	■	■
Front map lights	■	■	■	■	■
12-volt DC power outlet	■	■	■	■	■
Cup holders (two front) and bottle holders (two rear)	■	■	■	■	■
Cargo area under-floor storage (FWD)	■	■	■	■	■

<sup>1</sup>Required SiriusXM® Satellite Radio, NavTraffic® and NavWeather® subscriptions sold separately after trial period. Installation costs, one-time activation fee, other fees and taxes will apply. NavTraffic® available in select markets. Services available only to those 18 or older in the 48 contiguous states and D.C. Fees and programming subject to change. Subscriptions governed by Customer Agreement available at [siriusxm.com](http://siriusxm.com). ©2014 Sirius XM Radio Inc. Sirius,® XM® and all related marks and logos are trademarks of Sirius XM Radio Inc. <sup>2</sup>Availability of specific features is dependent upon the phone's Bluetooth® support. Please refer to your phone Owner's Manual for details. Bluetooth® word mark and logos are owned by Bluetooth SIG, Inc., and any use of such marks by Nissan is under license. Recaro® is a registered trademark of Recaro North America, Inc.



SPECIFICATIONS (CONTINUED)

Seating/Appointments	S	SV	SL	NISMO®	NISMO® RS
6-way manual driver's seat	■	■	■	■	■
4-way manual front-passenger's seat	■	■	■	■	■
NISMO® sport bucket front seats				■	
Recaro® sport bucket front seats with embossed logo and integrated head restraints					■
Cloth seat trim	■				
Premium cloth seat trim		■			
Leather-appointed seats			■		
NISMO® embroidered synthetic suede seat trim				■	
Recaro® black synthetic suede center fabric and red leather bolsters					■
NISMO® signature red stitching				■	
Heated front seats		<sup>cw</sup>	■		
60/40 Split fold-down rear seats	■	■	■	■	■
Front-passenger seatback pocket		■	■	■	
Leather-wrapped steering wheel		■	■		
NISMO® Alcantara® and leather-wrapped steering wheel				■	■
Leather-wrapped shift knob			■		
NISMO® shift knob				■	■
Painted center console and door trim accents	■	■	■	■	■
Smoked Gray center console and door trim accents				■	■
Carpeted floor mats	■	■	■		
NISMO® carpeted floor mats				■	■
Carbon-fiber Look interior trim					■
Black headliner				■	■
Synthetic suede stitched instrument panel hood					■
NISMO® center console badge				■	■

Audio/Entertainment	S	SV	SL	NISMO®	NISMO® RS
AM/FM/CD audio system with 5.0" color monitor	■	■	■	■	■
Rockford Fosgate® ecoPUNCH™ audio system with 8" subwoofer and amplifier		<sup>T</sup>	■	■	■
SiriusXM® Satellite Radio <sup>1</sup>	■	■	■	■	■
Streaming audio via Bluetooth® wireless technology <sup>2</sup>	■	■	■	■	■
Six speakers	■	■	■	■	■
Six upgraded speakers		<sup>T</sup>	■	■	■
USB connection port for iPod® interface and other compatible devices	■	■	■	■	■
Auxiliary audio input jack	■	■	■	■	■
MP3/WMA CD playback capability	■	■	■	■	■
Radio Data System (RDS)	■	■	■	■	■

Audio/Entertainment (continued)	S	SV	SL	NISMO®	NISMO® RS
Speed-sensitive volume control	■	■	■	■	■
Illuminated steering wheel-mounted audio controls	■	■	■	■	■

Safety/Security	S	SV	SL	NISMO®	NISMO® RS
Nissan Advanced Air Bag System with dual-stage supplemental front air bags with seat belt sensors and occupant-classification sensor	■	■	■	■	■
Driver and front-passenger seat-mounted side-impact supplemental air bags	■	■	■	■	■
Roof-mounted curtain side-impact supplemental air bags for front and rear-seat outboard occupant head protection	■	■	■	■	■
Vehicle Dynamic Control (VDC) with Traction Control System (TCS)	■	■	■	■	■
3-point ALR/ELR passenger seat belt system (ELR for driver)	■	■	■	■	■
Front seat belts with pretensioners and load limiters	■	■	■	■	■
Front-seat Active Head Restraints	■	■	■	■	■
LATCH System (Lower Anchors and Tethers for CHildren)	■	■	■	■	■
Energy-absorbing steering column	■	■	■	■	■
High-strength steel side-door guard beams	■	■	■	■	■
Zone Body construction with front and rear crumple zones	■	■	■	■	■
Hood-buckling creases	■	■	■	■	■
Tire Pressure Monitoring System (TPMS)	■	■	■	■	■
Nissan Vehicle Immobilizer System	■	■	■	■	■
Vehicle Security System	■	■	■	■	■

PACKAGE

<sup>cw</sup> SV Cold Weather Package
Heated side mirrors
Heated front seats

<sup>T</sup> SV Tech Package
NissanConnect <sup>SM</sup> with Navigation and Mobile Apps, with 5.8" color touch-screen monitor and Voice Recognition for audio and navigation
SiriusXM® Traffic and Travel Link® <sup>1</sup>
Around View® Monitor with Moving Object Detection (MOD)
Rockford Fosgate® ecoPUNCH™ audio system with 8" subwoofer and amplifier
Six upgraded speakers

DIMENSIONS/CAPACITIES/WEIGHTS/MPG

Dimensions – Inches	
<b>Exterior</b>	
Wheelbase	99.6
Overall length	162.4 (S, SV, SL)/163.8 (NISMO®, NISMO® RS)
Overall width	69.5 (S, SV, SL)/69.7 (NISMO®, NISMO® RS)
Overall height	61.8
Track width (front/rear) – FWD	60.0/60.0
Track width (front/rear) – AWD	60.0/59.3

Interior (front/rear)	
Head room	39.6/36.7
With moonroof	38.6/36.7
Leg room	42.1/32.1
Hip room	51.5/48.4
Shoulder room	53.6/51.4
Step-in height	16.7/17.1

Cargo	
Length	26.6
Width	55.5
Height	26.8

Capacities	
Seating capacity	5
EPA interior passenger volume (cu. ft.)	
Without moonroof	86.7
With moonroof	85.4
Cargo volume (cu. ft.)	
With rear seats up	10.5
With rear seats down	35.9
Fuel tank (gals.) – FWD/AWD	13.2/11.8

<sup>1</sup>Required SiriusXM® Satellite Radio, NavTraffic® and NavWeather® subscriptions sold separately after trial period. Installation costs, one-time activation fee, other fees and taxes will apply. NavTraffic® available in select markets. Services available only to those 18 or older in the 48 contiguous states and D.C. Fees and programming subject to change. Subscriptions governed by Customer Agreement available at [siriusxm.com](http://siriusxm.com). ©2014 Sirius XM Radio Inc. Sirius,® XM® and all related marks and logos are trademarks of Sirius XM Radio Inc. <sup>2</sup>Availability of specific features is dependent upon the phone's Bluetooth® support. Please refer to your phone Owner's Manual for details. Bluetooth® word mark and logos are owned by Bluetooth SIG, Inc., and any use of such marks by Nissan is under license. Alcantara® is a registered trademark of Alcantara S.p.A. Corporation. ecoPUNCH™ is a trademark of Rockford Fosgate. iPod® is a registered trademark of Apple, Inc. All rights reserved. iPod® not included. Recaro® is a registered trademark of Recaro North America Inc. Rockford Fosgate® is a registered trademark of Rockford Corporation.



DIMENSIONS/CAPACITIES/WEIGHTS/MPG (CONTINUED)

**Curb Weights – Lbs.**

Base Total	S	SV	SL	NISMO®	NISMO® RS
<b>FWD</b>					
Manual transmission	–	–	–	2,950	2,969
Xtronic CVT®	2,981	3,001	3,026	–	–

<b>AWD</b>					
Xtronic CVT®	3,164	3,184	3,209	3,203	3,195

**2015 EPA Fuel Economy Estimates**

City/Hwy/Combined MPG	S	SV	SL	NISMO®	NISMO® RS
<b>FWD</b>					
Manual transmission	–	–	–	28/34/30	25/31/27
Xtronic CVT®	28/32/30	28/32/30	28/32/30	–	–

<b>AWD</b>					
Xtronic CVT®	26/31/28	26/31/28	26/31/28	26/31/28	25/29/27

Actual mileage may vary with driving conditions – use for comparison only.

BUYING/OWNING



**Nissan Motor Acceptance Corporation.** Whether you're buying or leasing, you'll find attractive rates and flexible terms to make your purchase more accessible.

**College Grad Program.** Ask about our special new vehicle pricing available to individuals up to two years after graduation.

**Active and Reserve US Military Program.** Ask about eligibility for our fixed discount on new vehicle pricing available to those serving our country.

**New Vehicle Limited Warranties.** Protection for your new Nissan includes 3-year/36,000-mile (whichever occurs first) basic coverage and 5-year/60,000-mile (whichever occurs first) powertrain coverage. Terms, conditions and exclusions apply. See Warranty Information Booklet for complete details.

**Security+Plus®** For additional peace of mind, a variety of extended service plans lets you tailor the coverage to your driving habits.

**Maintenance+Plus®** This extended plan ensures your Nissan will receive up to 17 different services and over 33 different inspection items at each visit, using the most up-to-date diagnostic equipment available.

**Genuine Nissan Parts.** When it comes time for service, any necessary replacement parts will be made using Genuine Nissan new or remanufactured parts, or Nissan-approved parts. And they're the only parts to carry Nissan's factory-backed limited warranty.

**Nissan Mobility Assist.** This program offers reimbursements toward the purchase and installation of certain mobility assistance products for program-eligible Nissans. Go to [NissanUSA.com/mobility](http://NissanUSA.com/mobility) for more info.

Nissan's environmental action plan focuses on several key areas. Increasing production of Zero Emission vehicles, including the 100% electric LEAF.® Improving fuel efficiency through our PUREDRIVE™ measures. And reducing the environmental impact of manufacturing, as seen at our new, energy-efficient, low-emissions paint plant in Tennessee. For more information, log on to [NissanUSA.com/green](http://NissanUSA.com/green)



Follow us:  @NissanSupport

At [NissanUSA.com](http://NissanUSA.com), you'll find virtual product demonstrations, a way to "build your own Nissan," a dealer locator, and more information about key Nissan support services. Or if you'd prefer, call **1-800-NISSAN-3** for answers to specific questions about JUKE® or any other Nissan vehicle. The Nissan names, logos, product names, feature names, and slogans are trademarks owned by or licensed to Nissan Motor Co. Ltd. and/or its North American subsidiaries. **Always wear your seat belt, and please don't drink and drive.** ©2014 Nissan North America, Inc.

This brochure is intended for general descriptive and informational purposes only. It is subject to change and does not constitute an offer, representation or warranty (express or implied) by Nissan North America, Inc. Interested parties should confirm the accuracy of any information in this brochure as it relates to a vehicle directly with Nissan North America, Inc., before relying on it to make a purchase decision. Nissan North America, Inc., reserves the right to make changes, at any time, without prior notice, in prices, colors, materials, equipment, specifications, and models and to discontinue models or equipment. Due to continuous product development and other pre- and post-production factors, actual vehicle, materials and specifications may vary from this brochure. Some vehicles shown with optional equipment. See the actual vehicle for complete accuracy. Availability and delivery times for particular models or equipment may vary. Specifications, options and accessories may differ in Hawaii, U.S. territories and other countries. For additional information on availability, options or accessories, see your Nissan dealer or contact Nissan North America, Inc.



Sign up for the latest news and updates on the 2015 Nissan JUKE.®

or visit [NissanUSA.com/juke](http://NissanUSA.com/juke)

Los folletos de Nissan también están disponibles en español. Para descargar el PDF, visita:

[NissanUSA.com/folletos-espanol](http://NissanUSA.com/folletos-espanol)

And follow Nissan on:

