

CT

LEXUS 2012



the 2012
CT



Vehicle shown with available equipment.

THE PURSUIT OF PERFECTION.

It is a philosophy that extends well beyond the confines of meticulously assembled sheet metal. An approach to the automobile not as a machine, but rather, an art form. Every curve, deliberate. Every detail, inspired. And where every aspect of the ownership experience is intended to be as rewarding and accommodating as the vehicles themselves. Because while there are certainly easier ways to build an automobile, pursuing perfection is the only way to create a Lexus.

With outstanding craftsmanship and innovation in every 2012 CT, you can experience the comfort of owning a true luxury vehicle, and enjoy all of life's perfect moments.

advanced.
bold.
fun.

Presenting the CT 200h – a luxury vehicle that changes all the rules. With its bold design, driver focused interior, and performance suspension, the CT guarantees many moments of fun. Powered by the advanced and proven Lexus Hybrid Drive System, the CT rewards you with the best fuel efficiency of any luxury vehicle in Canada. And for 2012, the available all-new F-Sport package offers enhanced performance and exterior features for an exhilarating experience. And of course, being a Lexus, the CT abounds in luxury and attention to the finest details.

**LEXUS
HYBRID
DRIVE**



Maybe it's an unexpected stretch of curvy road or a favourite song on your playlist. Whatever your motivation, when inspiration strikes, SPORT mode makes any ride a more exhilarating one.

2 moods 2 modes.



SPORT

In SPORT mode, illumination of the instrument panel and Drive Mode Select switch changes from blue to red, and the Hybrid System Indicator is replaced with a tachometer. For added responsiveness and a more engaging drive, steering is made to feel more direct, throttle response is increased and the traction and stability control systems are made less intrusive. The Hybrid battery output changes from 500v to 650v for optimized power.





Whether you're in a parking garage, rush-hour traffic or just in the mood to sit back and enjoy its remarkably quiet cabin, ECO and EV mode can help make your drive an even more efficient one.



ECO, EV & NORMAL

In ECO mode, throttle response and climate control are optimized. In EV (electric vehicle) mode, the CT runs on battery power alone for 1 to 2 kilometres at speeds below 40 km/hour. Because the gasoline engine is not engaged, noise is minimized and emissions are eliminated. Depending on driving conditions, both settings can noticeably reduce fuel consumption.



the world's first luxury hybrid sportback.

Thanks to its advanced and proven Lexus Hybrid Drive powertrain, the CT 200h delivers the highest combined city/highway rating⁸ of any luxury vehicle in Canada: 4.6 L/100 km; while emitting nearly 70% fewer smog-forming emissions¹² than its gasoline or diesel competitors.

The CT's ability to drive more than 900 kilometres on less than 45 litres⁸ of gas is only one aspect of its ingenious design. Every aspect of the CT 200h's design has been engineered for superior airflow. The result is a low 0.29 coefficient of drag that not only offers improved fuel efficiency, but enhances control, handling, and comfort.

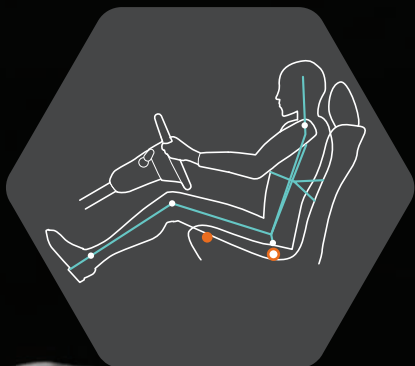


**LEXUS
HYBRID
DRIVE**



embraces drivers, not conventions.

The ideal driving position. While it may not be what you'd expect in a hybrid vehicle, it was made a priority when developing the CT. In fact, Lexus engineers even went so far as to develop a new air intake system to allow the hood to sit lower. The purpose: to position the driver as close to the car's centre of gravity as possible while still maintaining optimal visibility. Strap yourself into the low-set bolstered sport seat, grab hold of the LFA Supercar-inspired wide-grip sport steering wheel and take that first corner—we're sure you'll agree: It was well worth the effort.



The placement and angle of the driver's seat, steering wheel, accelerator and brake pedal were precisely calculated to help position the driver's hip point as close to the CT's centre of gravity as possible. The result is a driving position that provides optimal comfort and a more dynamic driving experience overall. In addition to its optimized position, the front seats in the CT feature pronounced side bolsters engineered with internal wire framing for additional lateral support during high-G cornering. The driver's seat also includes power-adjustable lumbar support to help provide added comfort and reduce driver fatigue.



LEXUS

POWER

20 1:22 22

LEXUS
FM1 CH2
89.9

ECO
SPORT

POWER MONI OFF

PASSENGER



To learn more about the package or to configure your CT with individual F-Sport Equipment, please visit lexus.ca.





Combining the performance characteristics of the CT with the capability required to master Fuji International Speedway, the all-new F-Sport package features front and rear lateral performance dampers developed by Yamaha, racing-inspired sport aluminum pedals and F-Sport badges and steering wheel. It also features bold design cues inside and out, including a distinctive front fascia, rear spoiler and an available Ultrasonic Blue Mica exterior.





eye-raising innovations. but the
sense of luxury will come as no surprise.



While its fit and finish is as impeccable as you'd expect in a Lexus, the NuLuxe seating material offers more than just good looks. It weighs half as much as leather and its manufacturing process generates 65% fewer CO₂ emissions and no VOCs. The CT 200h also features extensive use of ecological materials, like carpeting composed of 30% plant-based sources and speakers derived from bamboo fibres.



LEXUS NAVIGATION

The available voice-activated HDD Navigation System¹ isn't only one of the fastest and most accurate systems on the market, it's also designed to be one of the most convenient.



REMOTE TOUCH

The available award-winning Remote Touch functions similarly to a computer mouse, enabling you to easily move through logical menus of the CT's features. Ergonomically designed with a fingertip toggle pad, snap-to technology and buttons on either side, it's located centrally for you and your front passenger's comfort and convenience.

a car that changes everything.



The CT has already left quite an impression on the industry. But, make no mistake, it can have a similar impact on the driver. Take the audio system. The speaker diaphragms are derived from bamboo so they're not only lighter, they're thinner and stiffer. Which, in turn, makes them sound better. The new amplifier in the available 10-speaker system is specifically tuned to the acoustics of the CT's quiet cabin to further

enhance the sound quality and provide exceptional low-volume performance.

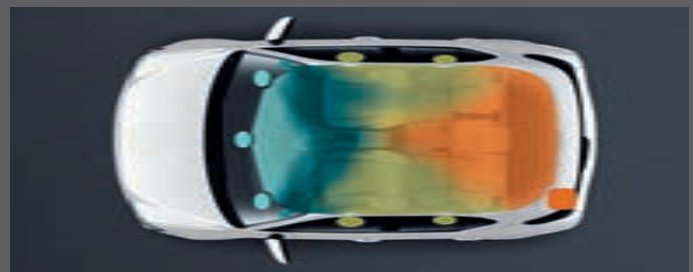
To put either system to good use, compatible portable audio players can be connected and controlled through USB or *Bluetooth*.^{®5}

Among its other innovations, an available eight-inch LCD screen can retract from the dash, providing you voice-activated access to its Navigation System!



BAMBOO SPEAKER DESIGN

Both the 6-speaker and available 10-speaker sound systems feature the world's first automotive speakers constructed with sustainable bamboo and resin. As a benefit of this innovative design, the injection-molded diaphragms are thinner, stiffer, lighter and offer a wider frequency range than conventional speaker diaphragms, resulting in additional sound clarity and more natural acoustics.



SOUND IMAGING

The available 10-speaker system features an amplifier that's the first of its kind on a Lexus. Consuming 50% less power and weighing 26% less than a conventional amplifier, it provides a natural soundscape regardless of seating position through state-of-the-art sound imaging technology.

Handling hairpins and S-curves isn't nearly as impressive if you can't also handle the day-to-day. Fortunately, the five-door sportback design of the CT provides the ultimate in flexibility and convenience. And, with the added versatility of a 60/40-split rear seat and secondary rear storage compartment with built-in organizer, getting on the road is as easy as it is fun.



60/40 FOLDING REAR SEAT

A folding 60/40-split rear seat can accommodate cargo of multiple shapes and sizes. With both seats folded flat, the CT offers more than 900-litres (30 cu.ft.) of storage.

one more way
it excels at handling.



STORAGE COMPARTMENT

Components were strategically placed lower and closer to the car's centre of gravity, enhancing performance and creating enough room for an additional hidden storage compartment in the rear.



LED HEADLAMPS

The CT features up to 89 individual light-emitting diodes (LEDs). Among them, distinctive daytime running lights provide an aggressive appearance. And, striking in their own right, available low-beam LED headlamps use less energy, last longer and illuminate faster than conventional bulbs.

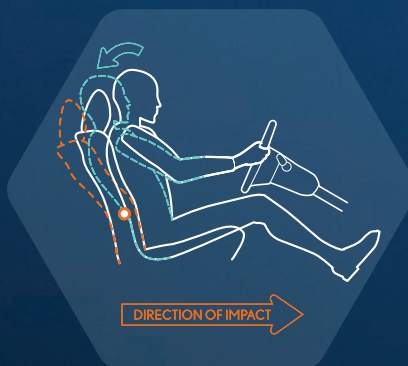
to understand why
it's so far ahead, just look
where it began.

The CT wasn't only engineered to be the next great Lexus Hybrid, it was engineered to be the next great Lexus. Period. In fact, it was designed by the same chief engineer who brought us our finest vehicle to date—our flagship LS 600h L premium luxury hybrid sedan. While its sculpted front end introduces a new design direction for Lexus, the rigorous standards behind its manufacture remain unchanged: An exterior polished by hand. A dust free painting facility. And an exhaustive test drive over a variety of road conditions by a specialist thoroughly familiar with the CT—and all that its emblem represents.



AVAILABLE BACKUP CAMERA

An available backup camera² system can display a wide-angle view of what the camera detects behind the vehicle on the available navigation screen or, in a section of the rearview mirror itself depending upon the option selected.



WHIPLASH INJURY LESSENING (WIL) SEATS

In the event of certain rear-end collisions, the front seatbacks in the CT are designed to push backward, allowing the occupant to sink into the seat. This can help to limit excessive head movement by reducing the space between the occupant's head and headrest, decreasing the severity of whiplash injury.

THE DEALERSHIP EXPERIENCE

When you visit one of our dealerships, make yourself at home by helping yourself to a beverage and internet access.[†] When picking up your new Lexus, our associates will make the transition seamless. We can help you with everything from setting your favourite radio stations to connecting and transferring your compatible cell phone's contacts to the available *Bluetooth*[®] system on your vehicle. Rest assured your car will experience the finest treatment as well, with a complimentary car wash with every service.

CLUB LEXUS

A complimentary Club Lexus membership is offered to all new, pre-owned or leased Lexus owners. Club Lexus provides an exceptional compilation of services, offers, special events, and pertinent information that's of interest to Lexus drivers. You can also view your service history, the status of your factory warranty or Extra Care Protection (ECP) coverage, and the current status of your Lexus Financial Services (LFS) loan or lease. Sign up today and start taking advantage of all of the features at www.clublexus.ca.

LEXUS LIFESTYLE COLLECTION

Enhance your ownership experience even further with the "The Lexus Lifestyle Collection" Catalogue. Every year, Lexus assembles a wide range of brand name products that exemplify the finest design and craftsmanship in the world, which include designer luggage, Lexus apparel, stunning watches, Royal Doulton Glassware and much more. An exceptional item can be found for every driver.

To learn more about the various exclusive services that Lexus offers, please visit www.lexus.ca.

SERVICE COMMITMENT

On top of enjoying the highest quality product, Lexus also delivers through a professional Dealer network, a unique and uncompromising level of after-sales service: First Class Service Concept. The highest level of professionalism and vehicle support ensure that the Lexus ownership experience is as luxurious as the vehicles.

MAINTENANCE

We offer the first two scheduled maintenance services at no charge to you. The first service at 1,600 km will include a thorough vehicle inspection and a road test. The second inspection at 8,000 km will include a change of engine oil and oil filter.

EXTRA CARE PROTECTION

Extend beyond the new vehicle warranty and enhance your peace of mind with Lexus Extra Care Protection.

WARRANTY

Our Lexus Warranty Comprehensive Coverage includes:

- 48 months/80,000 km (includes tires).
- Hybrid-Related Components: 96 months/160,000 km (applies to battery control module, hybrid vehicle control module, hybrid battery and the inverter/converter).
- Powertrain: 72 months/110,000 km.
- Corrosion Perforation: 72 months/unlimited kilometres.
- Major Emission Control Components: 96 months/130,000 km.

Please see your Lexus Dealer for details.

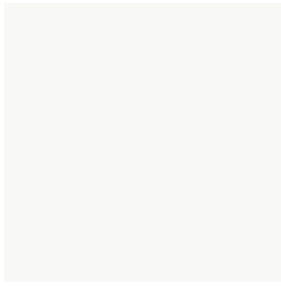
Lexus will even provide five days of alternate transportation if your vehicle is required to stay at the dealership for an extended period of time due to a warrantable condition.

ROADSIDE ASSISTANCE

As a proud owner of a Lexus vehicle, you won't have to worry about obtaining assistance when mishaps requiring Emergency Roadside Service or Mechanical Breakdown Towing are needed. Throughout Canada and the continental U.S., our Central Emergency Roadside Services Operator will always be there to ensure you receive prompt, efficient services from one of the many facilities qualified under our approved Roadside Assistance Program. Twenty-four hours a day, 365 days a year, we will be there to help.

[†]Internet is available in most Lexus locations.

EXTERIOR COLOURS



0077
Starfire Pearl



01G1
Tungsten Pearl



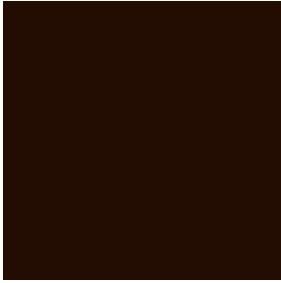
01H9
Mercury Grey Metallic



0212
Obsidian



03R1
Matador Red Mica



04V3
Fire Agate Pearl



05B1
Daybreak Yellow Mica

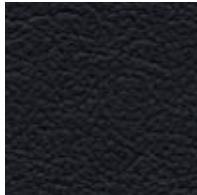


08U1
Ultrasonic Blue Mica*

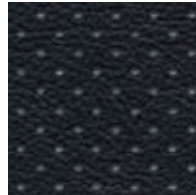
INTERIOR COLOURS



Ivory
Leather



Black
Leather



Black
Leather with
White Perforations*



Black
NuLuxe

COLOUR AVAILABILITY

	Ivory Leather	Black Leather	Black Leather with White Perforations*	Black NuLuxe
Starfire Pearl	■	■	■	■
Tungsten Pearl		■		■
Mercury Grey Metallic		■		■
Obsidian	■	■	■	■
Matador Red Mica		■		■
Fire Agate Pearl	■	■		■
Daybreak Yellow Mica		■		■
Ultrasonic Blue Mica*			■	

Visit our Web site and try on a colour. lexus.ca

*Only available on F-Sport Package.

Colours and interiors are subject to change during model year. Please see your Lexus Dealer for details.

WHEELS



16-inch 10-spoke alloy wheel
STANDARD



17-inch 10-spoke alloy wheel
AVAILABLE



17-inch 10-spoke alloy wheel
F-Sport Package
AVAILABLE

BODY AND DIMENSIONS

HEADROOM
front/rear
960/940 mm - 37.8/37.0 in

SHOULDER ROOM
front/rear
1,370/1,335 mm - 53.9/52.6 in



HEIGHT
1,440 mm/56.7 in

WIDTH 1,765 mm/69.5 in

CARGO CAPACITY (behind rear seats)
405 litres/14.3 cubic feet

FUEL-TANK CAPACITY
45 litres/9.9 gallons

LEGROOM
front/rear
1,055/835 mm - 41.5/32.9 in



WHEELBASE 2,600 mm - 102.4 in

OVERALL LENGTH 4,320 mm - 170.1 in

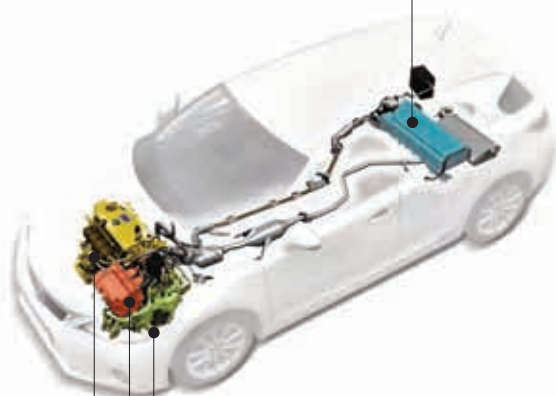
GENERAL

TYPE Five-passenger hybrid five-door sportback
CONSTRUCTION Welded-steel unibody
CURB WEIGHT 1,420 kg/3,130 lb

ENGINE

TYPE	In-line 4-cylinder, Atkinson cycle, aluminum block and heads
DISPLACEMENT	1.8 litre
VALVETRAIN	Dual cam, four valves per cylinder, with continuously Variable Valve Timing with intelligence (VVT-i)
COMPRESSION RATIO	13.0:1
ELECTRIC-DRIVE MOTOR	High-output, permanent-magnet, electric-drive motors with EV mode
TOTAL SYSTEM HORSEPOWER	134 hp ⁷
EMISSION RATING	Tier 2 Bin 3 Emissions Rating

NICKEL-METAL HYDRIDE BATTERY



ELECTRONICALLY CONTROLLED CONTINUOUSLY VARIABLE TRANSMISSION (ECVT)

HIGH-OUTPUT ELECTRIC-DRIVE MOTOR

ATKINSON CYCLE ENGINE

DRIVETRAIN

DRIVE WHEELS	Front-wheel drive Vehicle Stability Control (VSC), ⁹ Traction Control (TRAC), Hill-start Assist Control (HAC) ¹¹
TRANSMISSION	Electronically Continuously Variable Transmission (ECVT)

PERFORMANCE

FUEL ECONOMY ESTIMATES	4.5/4.8/4.6 L/100 km (city/highway/combined)	63/59/61 mpg ⁸
AERODYNAMIC DRAG COEFFICIENT	0.29	
TURNING CIRCLE	11.2 m/36.9 ft	

CHASSIS

SUSPENSION	Front: Independent, MacPherson struts with coil springs and stabilizer bar Rear: Independent, double-wishbone with coil springs and stabilizer bar
-------------------	---

STEERING Electric Power Steering system (EPS)

BRAKES Four-wheel power-assisted discs, with Electronic Controlled Braking (ECB) four-sensor, four-channel Anti-lock Brake System (ABS), Electronic Brake-force Distribution (EBD) and Brake Assist (BA).¹⁰

10.0-inch ventilated front, 10.9-inch solid rear discs with regenerative braking function

WHEELS AND TIRES 16-inch 10-spoke alloy wheels with P205/55R16 all-season tires. Temporary spare tire

Optional:

17-inch 10-spoke alloy wheels with P215/45R17 all-season tires. Temporary spare tire

F-Sport 17-inch 10-spoke alloy wheels with Dark Graphite finish, P215/45R17 all-season tires. Temporary spare tire

STANDARD LUXURY FEATURES

LUXURY AND CONVENIENCE

SmartAccess¹⁵ with push-button Start/Stop, smart key system
Dual-zone automatic climate control with interior air filter
Rear seat heater ducts
Tilt-and-telescopic steering wheel
Power windows with one-touch auto open/close
Retained accessory power for windows
Power window with jam protection
Power door locks
Cargo lamp
Hybrid blue accented logos and badges
Cruise control
Multifunction, in-key remote entry system with rolling-code technology
Lexus Personalized Settings (LPS) to customize select electronic functions
Illuminated entry system with fadeout
Rear spoiler
Exterior glass with UV reduction
Carpeted floor mats
Tonneau cover

SEATING AND TRIM

NuLuxe trimmed interior
Leather-wrapped steering wheel and metallic shift knob with leather trim
8-way power adjustable (including lumbar) driver's seat
4-way manual adjustable passenger's seat
Front heated bucket seats
Fold-down rear seat (60/40 split)

COMMUNICATION, AUDIO AND NAVIGATION

Lexus 6-speaker Premium Sound System with Automatic Sound Levelizer (ASL) and in-dash, single disc CD player
Bamboo charcoal speakers
Bluetooth[®] capability⁵
Integrated XM[®] satellite radio^{1,3}
Satellite roof-mounted antenna
USB and auxiliary iPod^{®4}/MP3/Windows Media Audio (WMA) port

INSTRUMENTATION AND CONTROLS

Steering-wheel-mounted audio and *Bluetooth*^{®5} controls
Electroluminescent instrumentation
Organic LED multi-information display
Drive mode select with Normal, Sport, ECO and EV (electric vehicle) driving modes
Selectable blue or red instrumentation lighting
Selectable ECO driving indicator or tachometer
Outside temperature gauge

STANDARD SAFETY AND SECURITY FEATURES

ACTIVE SAFETY

Smart Stop Technology¹⁶
Four-wheel power-assisted disc brakes
Electronic Controlled Braking (ECB)
Four-sensor, four-channel Anti-lock Brake System (ABS)
Vehicle Stability Control (VSC)⁹
Traction Control (TRAC)
Brake Assist (BA)¹⁰
Electronic Brake-force Distribution (EBD)
Direct Tire Pressure Monitor System¹³
Automatic on/off projector beam headlamps
Integrated foglamps
Light Emitting Diode (LED) daytime running lights
Rear-window defroster with auto-off timer
Water-repellent front-door glass
Variable intermittent windshield wipers with mist function
Intermittent rear-window wiper with washer
Power-adjustable, side view heated foldable mirrors, puddle lamps and integrated turn indicators

PASSIVE SAFETY

Driver's and front passenger's dual-stage airbag system (SRS)¹⁴
Front seat-mounted side airbags (SRS)¹⁴
Front and rear side curtain airbags (SRS)¹⁴
Driver's and front passenger's knee airbags (SRS)¹⁴
Whiplash protection front headrests⁶
Three-point seatbelts for all-seating positions, pre-tensioners with force limiters for front and outboard rear seats
Automatic Locking Retractor/Emergency Locking Retractor (ALR/ELR) seatbelts for front and outboard mounted rear passenger seating positions. Emergency Locking Retractor (ELR) only for driver's seat and centre rear passenger seating position
Height-adjustable front shoulder belt anchors
Height-adjustable headrests for all seats with foldable rear headrests for rear outseats
Child Restraint Seat (CRS) tether anchor brackets for rear outboard seating positions
Rigid body structure with front and rear crumple zones
Side-impact door beams
Reinforcements in pillars and door sills
Impact-dissipating upper interior trim
Collapsible steering column
Collapsible brake and driver's footrest pedals
Vehicle Proximity Notification System

SECURITY

Vehicle theft-deterrent and engine-immobilizer system, with in-key transponder
Front door handle touch sensor lock/unlock
Tool kit

OPTION PACKAGES

TOURING PACKAGE

17-inch 10-spoke aluminum alloy wheels with P215/45R17 all-season tires
Power moonroof
Storage compartment with accessory power outlet (12v)

PREMIUM PACKAGE

17-inch 10-spoke aluminum alloy wheels with P215/45R17 tires
Lexus 10-speaker Premium Sound System with digital sound processor, Automatic Sound Levelizer (ASL) and in-dash, single-feed, six-disc CD auto-changer
Leather-seat surfaces
Electrochromic side view mirrors
Electrochromic rear view mirror with integrated backup camera² and digital compass
Reverse auto-tilting side view mirrors
Lexus Memory System to control power driver's seat (except lumbar) and outside mirrors
Power moonroof
Storage compartment with accessory power outlet (12v)
Integrated garage door opener
Rain-sensing intermittent windshield wipers with mist cycle

TECHNOLOGY PACKAGE

17-inch 10-spoke aluminum alloy wheels with P215/45R17 all-season tires
Lexus 10-speaker Premium Sound System with digital sound processor, Automatic Sound Levelizer (ASL) and in-dash, single-feed, six-disc CD auto-changer
Voice-activated HDD Navigation System¹ with remote touch
Backup camera² in navigation display
Leather-seat surfaces
Electrochromic side view mirrors
Electrochromic rear view mirror with digital compass
Reverse auto-tilting side view mirrors
Lexus Memory System to control power driver's seat (except lumbar) and outside mirrors
Power moonroof
Integrated garage door opener
Rain-sensing intermittent windshield wipers with mist cycle
Light Emitting Diode (LED) headlamps
Headlamp washers

OPTION PACKAGES

F-SPORT PACKAGE

F-Sport 17-inch 10-spoke aluminum alloy wheels with F-Sport centre wheel ornament, P215/45R17 all-season tires
Lexus 10-speaker Premium Sound System with digital sound processor, Automatic Sound Levelizer (ASL) and in-dash, single-feed, six-disc CD auto-changer
Premium leather-seat surfaces
Electrochromic side view mirrors
Electrochromic rear view mirror with integrated backup camera² and digital compass
Reverse auto-tilting side view mirrors
Lexus Memory System to control power driver's seat (except lumbar) and outside mirrors
Power moonroof
Storage compartment with accessory power outlet (12v)
Integrated garage door opener
Rain-sensing intermittent windshield wipers with mist cycle
F-Sport grille, scuff plates, steering wheel and rear spoiler
Front and rear performance dampers
Aluminum sport pedals with rubber inserts
Metal look interior trim

PERSONALIZE YOUR LEXUS

Block heater
Cargo net
Illuminated door sills

THE BEST WAY TO FINANCE YOUR NEW CT – EASILY, QUICKLY, AFFORDABLY.



• Lexus Financial Services does nothing but finance or lease Lexus vehicles; thus, we know financing and we know Lexus. • Our interest rates are fully competitive and our terms flexible (up to 72 months). • Since we offer Web services, you can: A: check out our rate; B: save time by getting credit approved on-line – before checking out the vehicle(s) of your interest. • Finally, one-stop shopping (at all Lexus Dealerships) saves you time. We invite you to visit us at lexus.ca or call us at 1-800-26-LEXUS.

LEXUS CANADA. Every effort has been made to ensure the specifications and equipment shown are accurate based on information available at time of printing. In some cases, certain changes in standard equipment, options or product delays may occur, which would not be reflected in this brochure. Lexus Canada reserves the right to make these changes without notice or obligation. Your Lexus Dealer is the best source for up-to-date information.



CLUB Lexus invites you to join us in Club Lexus, a very exceptional compilation of services, offers, special events and pertinent information available only to Lexus owners. To register for Club Lexus, please visit lexus.ca or call 1-800-26-LEXUS.

1. The Navigation System is designed to assist in locating an address or point of interest. Discrepancies may be encountered between the system and your actual location. Road system changes may affect the accuracy of the information provided. Rely on your common sense to decide whether to follow a specified route. Detailed coverage not available for every city or roadway. Periodic updates available at an additional cost. See your Navigation System *Owner's Manual* for further details. Navigational systems in some vehicles are available with bilingual capability. XM NavTraffic® requires a monthly service fee and is designed to provide real-time traffic or alternative routes of travel. NavTraffic will only be available in Montreal, Vancouver and Toronto. Both Montreal and Vancouver will only have incident data and Toronto will have both incident and flow data. **2.** The backup camera, available only with the Navigation System, does not provide a comprehensive view of the rear area of the vehicle. You should also look around outside your vehicle and use your mirrors to confirm rearward clearance. **3.** Functioning Satellite Radio requires a compatible receiver and monthly service fee. Please see your Lexus Dealer for further details. Reception of satellite signal may vary depending on location. **4.** iPod is a registered trademark of Apple Inc. **5.** Lexus tests certain Bluetooth® capable phones for compatibility with Lexus vehicles. Please see your Lexus Dealer for details. Note that the recommendation of Lexus is not a warranty of the performance for any phone and that some problems may occur with any type of handset based on the phone software version or the service coverage available in your area. Some vehicles equipped with Bluetooth® technology are available with bilingual capability. **6.** Active headrests can help reduce the extent of whiplash in certain types of rear-end collisions. **7.** Maximum output indicates engine plus HV battery output. **8.** FUEL CONSUMPTION RATING. These estimates are based on the Government of Canada's approved criteria and testing methods. The actual fuel consumption of the vehicle may vary. Refer to the Government of Canada publication *EnerGuide Fuel Consumption Guide*. **9.** Vehicle Stability Control (VSC) and if applicable Vehicle Dynamics Integrated Management (VDIM) are electronic systems designed to help the driver maintain vehicle control under adverse conditions. They are not substitutes for safe driving practices. Factors including speed, road conditions and driver steering input can all affect whether VSC and VDIM will be effective in preventing a loss of control. Please see your *Owner's Manual* for further details. **10.** Brake Assist is designed to help the driver take full advantage of the benefits of ABS. It is not a substitute for safe driving practices. Braking effectiveness also depends on proper brake-system maintenance and tire and road conditions. **11.** HAC is designed to help minimize backward rolling on steep ascents. This system is not a substitute for safe driving judgment and practices. Factors including speed, grade, surface conditions and driver input can all affect whether HAC will be effective in preventing a loss of control. Please see your *Owner's Manual* for further details. **12.** The Lexus Hybrids have nearly 70% fewer smog-forming emissions compared against similarly equipped conventional gasoline power vehicles. Based on North American sales data and Federal Tier 2 engine emission requirements. **13.** The Lexus Tire Pressure Monitor alerts the driver when tire pressure is critically low. For optimal tire wear and performance, tire pressure should be checked regularly with a gauge; do not rely solely on the monitor system. Please see your *Owner's Manual* for details. **14.** All the airbag ("AB") systems are Supplemental Restraint Systems. All ABs (if installed) are designed to inflate only under certain conditions and in certain types of severe collisions: frontal and knee ABs typically inflate in frontal collisions; side and side curtain ABs in side collisions; Roll-Sensing Curtain ABs at a severe tilt degree, roll or lateral G-force. In all other accidents, the ABs will not inflate. To decrease the risk of injury from an inflating AB, always wear seatbelts, Do not use a rearward-facing child seat in any front passenger seat. Please see your *Owner's Manual* for further information/warnings. **15.** The SmartAccess system may interfere with some pacemakers or cardiac defibrillators. If you have one of these medical devices, please talk to your doctor to see if you should deactivate this system. **16.** Smart Stop Technology operates only in the event of certain simultaneous brake and gas pedal applications. When engaged, the system will reduce engine power to help the brakes bring the vehicle to a stop. Factors including speed, road conditions and driver input can all impact stopping distance. Smart Stop Technology is not a substitute for safe and attentive driving and does not guarantee instant stopping.

Vehicles in this brochure shown with optional equipment. Some features mentioned and/or shown in this brochure may only be available as part of an optional package.

Under very cold conditions, the operation of some vehicle electronic systems using liquid crystal technology (such as CD, DVD, NAV and Audio displays) may be adversely affected until a warmer interior vehicle temperature is reached.

Lexus reminds you to place small children in CSA-approved car seats - in the rear seats, to always wear your seatbelts, and to drive safely.

