

# RX

LEXUS 2012





# the 2012 RX

Vehicle shown with available equipment.





## THE PURSUIT OF PERFECTION.

*It is a philosophy that extends well beyond the confines of meticulously assembled sheet metal. An approach to the automobile not as a machine, but rather, an art form. Every curve, deliberate. Every detail, inspired. And where every aspect of the ownership experience is intended to be as rewarding and accommodating as the vehicles themselves. Because while there are certainly easier ways to build an automobile, pursuing perfection is the only way to create a Lexus.*

*With outstanding craftsmanship and innovation in every 2012 RX, you can experience the comfort of owning a true luxury vehicle, and enjoy all of life's perfect moments.*

# our inspiration was quite simply, you.

Hundreds of engineers have spent thousands of hours discussing your every possible desire to give you a vehicle designed just for you. Fortunately, all this attention paid off. Presenting the 2012 RX.

With an interior as innovative as it is accommodating.

And performance as exhilarating as it is effortless.

It's a vehicle filled with the only kind of advancements that matter—those that advance you.

## THE 2012 RX LINE

### RX 350

*3.5-litre, 60° V6, six-speed sequential-shift automatic transmission*

*Four cam, four valves per cylinder, with Dual Variable Valve Timing with intelligence (Dual VVT-i) + full-time All-Wheel Drive (AWD)*

### RX 450h

*3.5-litre, 60° V6, sequential-shift automatic electronically controlled continuously variable transmission*

*Four cam, four valves per cylinder, with Variable Valve Timing with intelligence (VVT-i) + high-output electric-drive motor(s) + part-time All-Wheel Drive (AWD)*







innovation that  
lets you focus  
on the road.

The RX was designed from the point of view that innovation is only as impressive as it is useful. Take the award-winning available Remote Touch. Placed where your right hand naturally rests, it operates similar to a computer mouse, ensuring that every feature of the RX is within reach. Don't have your hands free? Available voice command lets you place *Bluetooth*<sup>®</sup> enabled phone calls and control climate, audio and available navigation functions.



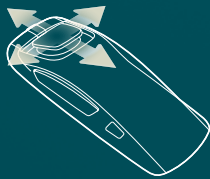
#### HEADS-UP DISPLAY

The central display is purposely located as close to eye level as possible to help you keep your focus on the road ahead. And, for even greater visibility, available Heads-up Display can project simple navigation directions, audio system information and vehicle speed on the windshield in front of you.



#### NAVIGATION SYSTEM<sup>1</sup>

The available Navigation System<sup>1</sup> utilizes an eight-inch LCD placed at eye level to help you remain focused on the road.



#### REMOTE TOUCH

Available Remote Touch was ergonomically designed with a fingertip-controlled toggle that allows you to easily move through logical menus of the RX's features. Located centrally for your comfort and convenience, buttons on either side are accessible to both the driver and front passenger.







How well a vehicle fits into your life often depends on what you can fit into it. To that point, Lexus engineers designed a unique double-wishbone rear suspension that doesn't intrude into the cargo area, enabling four large suitcases

to lay flat. Of course, this is just one of the ways the RX helps you with the day-to-day. It also features an available dual-screen Rear-Seat Entertainment System that allows two separate video sources to be watched at the same time.







of everything  
it fits, the most important  
is your lifestyle.



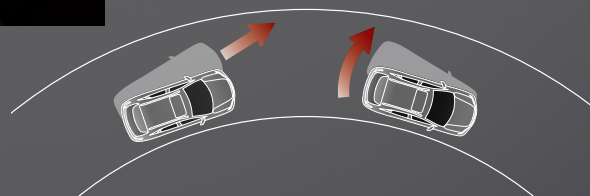




In addition to offering greater floor space in the cargo area, the uniquely designed double-wishbone rear suspension on the RX is engineered to provide greater agility. Another performance feature that won't go unnoticed: a 275-horsepower<sup>10</sup> engine on RX 350 that delivers 90% of its torque at low RPM.



Unlike conventional traction control systems that react once the vehicle's footing is compromised, the available Vehicle Dynamics Integrated Management (VDIM)<sup>13</sup> system can anticipate and help prevent a loss of traction before it occurs.



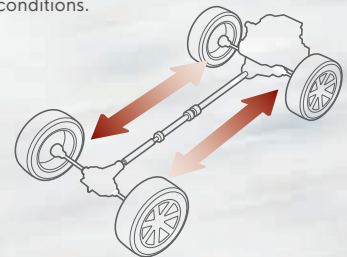


# all-wheel-drive as varied as the roads you drive on.

With Active Torque Control all-wheel drive, the RX 350 is designed to power the rear wheels only when needed and only by the amount required. During normal on-road driving, for instance, the vehicle sends 100% of the power to the front wheels for optimal efficiency. Should you encounter a rogue patch of ice, the system can automatically allocate up to 50% of the power to the rear wheels to help maintain traction.



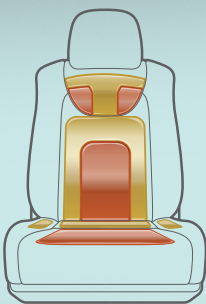
When determining power distribution, Active Torque Control all-wheel drive (AWD) monitors and accounts for such factors as G-force, steering angle, vehicle speed, braking and road conditions.



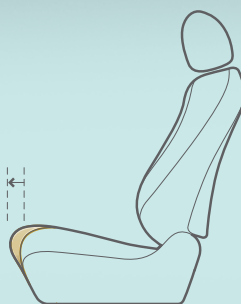
**AWD**  
ALL-WHEEL DRIVE



Vehicle shown with available equipment.



The front seats in the RX offer available customized heating and ventilation through zones that are distributed throughout the seatbacks and lower seat cushions. And, for optimal comfort, the amount of heat varies by the location of the zone.



The front seats offer available lower cushions that can be extended with the touch of a button for additional leg support—providing added comfort and helping to reduce leg fatigue.





our standards:  
the one area that's  
not adaptable.

How do we make an interior that's trimmed in available semi-aniline—among the finest leather in the world—even more exquisite? We leave the finishing touches to you. To name just two of its many accommodating features: 8-way adjustable power front seats with available internal heating and ventilation controls.



we set the bar  
years ago, and have  
raised it ever since.

It wasn't so long ago that the words luxury and hybrid were considered mutually exclusive. The original RX Hybrid changed that. Four years later, with the introduction of the RX 450h, the vehicle that created the category changed it once again. It features a highly efficient gasoline engine that is unlike most in the world. Powered by a hybrid system that's more intelligent than the previous generation, it offers remarkable fuel efficiency and low emissions. At the same time, its performance is enhanced with an intelligent Shift Control System, a first on any hybrid.

By harnessing the power of the vehicle's momentum when braking and coasting, the Lexus Hybrid Drive system is able to direct energy back into the battery, eliminating the need to plug it in.



The class-leading, available low-beam LED headlamps on the RX 450h offer more than just a distinctive appearance. Whiter and brighter than conventional headlamps, they illuminate a larger area ahead, providing greater visibility.







LEXUS  
HYBRID  
DRIVE

## UNCONVENTIONAL POWER

The Atkinson cycle gasoline engine in the RX 450h works differently from conventional engines by converting more of the energy generated during the combustion process into mechanical energy. When combined with a powerful electric motor, the result is impressive: fewer emissions, greater fuel efficiency and virtually instantaneous torque. Looking for even more fuel efficiency? When engaged, the ECO mode automatically optimizes multiple systems to consume less energy and regulates the throttle response for more even acceleration.

## ENHANCED PERFORMANCE

A hybrid utility vehicle first, Intelligent Shift Control can estimate whether you are travelling uphill or downhill and automatically select the appropriate gear ratio for optimal engine response. Enhancing performance even further, a Sequential Shift mode enables you to upshift or downshift on the fly, providing greater responsiveness and maneuverability coming out of corners.





## EFFICIENCY THROUGH TECHNOLOGY

Among the many innovative systems in the RX 450h, an Exhaust Gas Recirculation system captures, cools and repurposes gases generated during combustion, reducing emissions and providing best-in-class fuel economy ratings. An Exhaust Heat-Recovery system even uses a portion of these gases to warm the engine for greater efficiency in cold weather.

## 100% LEXUS

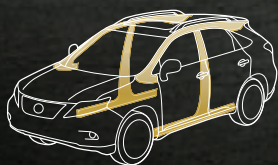
While much of the technology has changed since our first hybrid was introduced, the pursuit of perfection that led to it has not. Case in point, Lexus engineers developed a special component for the gasoline engine. Not for the purpose of efficiency. Or even for performance. It was so the gasoline engine's already subtle vibrations would be that much more imperceptible when it turns on and off while driving. Combine that with all the hallmarks of luxury, craftsmanship and innovation you've come to expect in every Lexus, and it becomes clear that while the notion of progress may be associated with the "h" on the rear, it really began years ago with the "L" on the front.



**LEXUS  
HYBRID  
DRIVE**

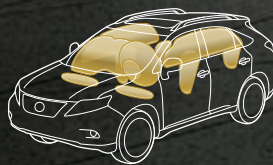
decades of thinking,  
hundreds of crash tests and  
nearly 1,800 once-overs.

The Lexus commitment to perfection doesn't come easy. Or quickly, for that matter. Before it leaves the factory, every RX must undergo a litany of inspections. Nearly 1,800 to be precise. Alignment, paint, performance to name a few. And, once it's passed, it's tested again. This time, on the track.



#### REINFORCED PILLAR STRUCTURE

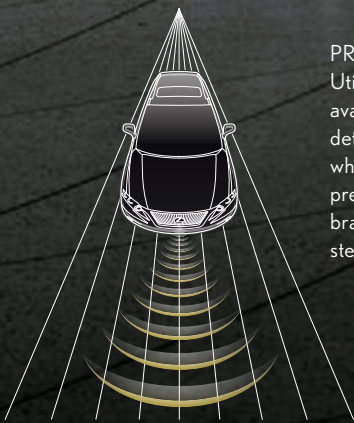
One of the outcomes of the 233 crash tests performed on the RX during development is a reinforced and overlapping pillar design that provides increased buckling strength and reduces the likelihood of deformation of the area around the pillars.



#### CLASS-LEADING 10-AIRBAG<sup>18</sup> SYSTEM

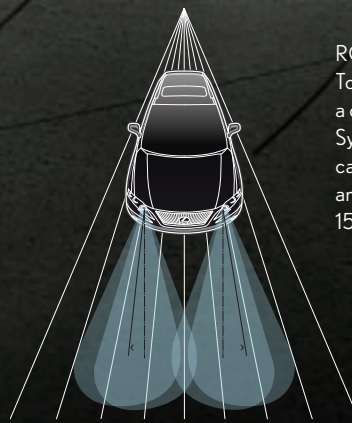
The RX is equipped with a class-leading 10-airbag<sup>18</sup> system. Included among them: dual-stage front, knee and side airbags<sup>18</sup> for the driver and front passenger. And side-curtain airbags<sup>18</sup> and side airbags<sup>18</sup> for the rear outboard passengers.





#### PRE-COLLISION SYSTEM<sup>16</sup>

Utilizing advanced radar technology, the available Pre-Collision System (PCS)<sup>16</sup> can detect an imminent frontal collision and, while retracting the seatbelts, automatically prepare Brake Assist<sup>14</sup> to provide increased braking pressure the moment you forcibly step on the brake pedal.



#### ROTATING HEADLAMPS

To help illuminate more of the road ahead in a curve, an available Adaptive Front Lighting System (AFS) features a right headlamp that can rotate up to 10 degrees into a right turn and a left headlamp that can rotate up to 15 degrees in a left turn.

## THE DEALERSHIP EXPERIENCE

When you visit one of our dealerships, make yourself at home by helping yourself to a beverage and internet access.<sup>†</sup> When picking up your new Lexus, our associates will make the transition seamless. We can help you with everything from setting your favourite radio stations to connecting and transferring your compatible cell phone's contacts to the available *Bluetooth*® system on your vehicle. Rest assured your car will experience the finest treatment as well, with a complimentary car wash with every service.

## CLUB LEXUS

A complimentary Club Lexus membership is offered to all new, pre-owned or leased Lexus owners. Club Lexus provides an exceptional compilation of services, offers, special events, and pertinent information that's of interest to Lexus drivers. You can also view your service history, the status of your factory warranty or Extra Care Protection (ECP) coverage, and the current status of your Lexus Financial Services (LFS) loan or lease. Sign up today and start taking advantage of all of the features at [www.clublexus.ca](http://www.clublexus.ca).

## LEXUS LIFESTYLE COLLECTION

Enhance your ownership experience even further with the "The Lexus Lifestyle Collection" Catalogue. Every year, Lexus assembles a wide range of brand name products that exemplify the finest design and craftsmanship in the world, which include designer luggage, Lexus apparel, stunning watches, Royal Doulton Glassware and much more. An exceptional item can be found for every driver.

To learn more about the various exclusive services that Lexus offers, please visit [www.lexus.ca](http://www.lexus.ca).

## SERVICE COMMITMENT

On top of enjoying the highest quality product, Lexus also delivers through a professional Dealer network, a unique and uncompromising level of after-sales service: First Class Service Concept. The highest level of professionalism and vehicle support ensure that the Lexus ownership experience is as luxurious as the vehicles.

## MAINTENANCE

We offer the first two scheduled maintenance services at no charge to you. The first service at 1,600 km will include a thorough vehicle inspection and a road test. The second inspection at 8,000 km will include a change of engine oil and oil filter.

## EXTRA CARE PROTECTION

Extend beyond the new vehicle warranty and enhance your peace of mind with Lexus Extra Care Protection.

## WARRANTY

Our Lexus Warranty Comprehensive Coverage includes:

- 48 months/80,000 km (includes tires).
- Hybrid-Related Components: 96 months/160,000 km (applies to battery control module, hybrid vehicle control module, hybrid battery and the inverter/converter).
- Powertrain: 72 months/110,000 km.
- Corrosion Perforation: 72 months/unlimited kilometres.
- Major Emission Control Components: 96 months/130,000 km.

Please see your Lexus Dealer for details.

Lexus will even provide five days of alternate transportation if your vehicle is required to stay at the dealership for an extended period of time due to a warrantable condition.

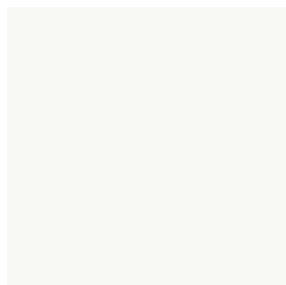
## ROADSIDE ASSISTANCE

As a proud owner of a Lexus vehicle, you won't have to worry about obtaining assistance when mishaps requiring Emergency Roadside Service or Mechanical Breakdown Towing are needed. Throughout Canada and the continental U.S., our Central Emergency Roadside Services Operator will always be there to ensure you receive prompt, efficient services from one of the many facilities qualified under our approved Roadside Assistance Program. Twenty-four hours a day, 365 days a year, we will be there to help.

<sup>†</sup>Internet is available in most Lexus locations.



## EXTERIOR COLOURS



0077  
Starfire Pearl



01G1  
Tungsten Pearl



01H9  
Mercury Grey Mica



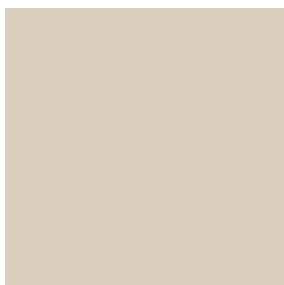
0214  
Black Opal Mica<sup>††</sup>



0217  
Starlight Black Mica

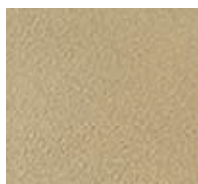


03R1  
Matador Red Mica



04U7  
Satin Cashmere Metallic

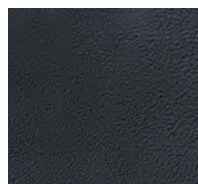
## INTERIOR COLOURS AND WOOD TRIMS



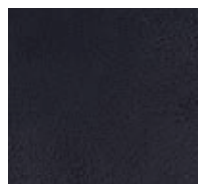
Parchment  
Leather



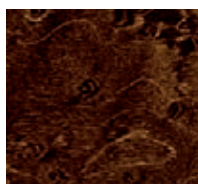
Light Grey  
Leather



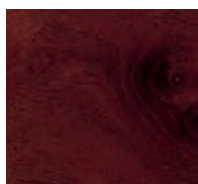
Black  
Leather



Black  
Fabric



Espresso Bird's-Eye  
Maple



Brown Walnut

## COLOUR AVAILABILITY

	Parchment Leather	Light Grey Leather	Black Leather	Black Fabric
Starfire Pearl	■		■	■
Tungsten Pearl		■	■	■
Mercury Grey Mica		■	■	■
Black Opal Mica <sup>††</sup>			■	
Starlight Black Mica		■	■	■
Matador Red Mica	■		■	■
Satin Cashmere Metallic	■			
Espresso Bird's-Eye Maple Trim		■		
Brown Walnut Trim	■		■	■

Visit our Web site and try on a colour. [lexus.ca](http://lexus.ca)

<sup>††</sup>Black Opal Mica is available for RX 450h only. RX 350 is standard with premium fabric seating surfaces. Perforated leather seating surfaces are standard on RX 350 Premium, Touring and Sport Packages. Premium leather seating surfaces are standard on RX 350 Ultra Premium Packages. RX 450h is standard with perforated leather seating surfaces. Premium leather seating surfaces are standard on RX 450h Ultra Premium Packages. Colours and interiors are subject to change during model year. Please see your Lexus Dealer for details.

## WHEELS



18-inch 5-spoke alloy wheel  
STANDARD RX 350 AND RX 450h



19-in 7-spoke alloy wheel  
AVAILABLE RX 350



19-inch split-5-spoke alloy wheel  
AVAILABLE RX 450h

## GENERAL

<b>TYPE</b>	Five-passenger luxury utility vehicle
<b>CONSTRUCTION</b>	Welded-steel unibody
<b>CURB WEIGHT</b>	1,970 kg/4,510 lb (RX 350) 2,110 kg/4,810 lb (RX 450h)
<b>TOWING CAPACITY (max)</b>	1,587 kg/3,500 lb <sup>23</sup>

## BODY AND DIMENSIONS

### RX 350

#### HEADROOM front/rear

992/958 mm - 39.0/37.7 in  
(w/o moonroof)

#### SHOULDER ROOM front/rear

1,473/1,462 mm - 57.9/57.5 in



#### HEIGHT

1,720 mm/67.7 in  
(w/roof rails)  
1,695 mm/66.7 in  
(w/o roof rails)

**WIDTH** 1,885 mm/74.2 in

### RX 450h

#### HEADROOM front/rear (w/moonroof)

992/958 mm - 39.0/37.7 in

#### SHOULDER ROOM front/rear

1,472/1,462 mm - 57.9/57.5 in



#### HEIGHT

1,720 mm/67.7 in

**WIDTH** 1,885 mm/74.2 in

### RX 350 and RX 450h

#### CARGO CAPACITY (max)

2,273 litres/80.3 cubic feet (behind front seats)  
1,132 litres/40.0 cubic feet (behind rear seats)

#### FUEL-TANK CAPACITY

72.5 litres/15.9 gallons (RX 350)  
65 litres/14.3 gallons (RX 450h)

#### LEGROOM

**front/rear**  
1,096/934 mm - 43.1/36.8 in (RX 350)  
1,096/942 mm - 43.1/37.0 in (RX 450h)

#### GROUND CLEARANCE

185 mm/7.3 in (RX 350)  
175 mm/6.9 in (RX 450h)



**WHEELBASE** 2,740 mm/107.9 in

**OVERALL LENGTH** 4,770 mm/187.8 in



## ENGINE

### RX 350

TYPE	60° V6, aluminum block and heads
DISPLACEMENT	3.5 litres
VALVETRAIN	Four cam, four valves per cylinder, with Dual Variable Valve Timing with intelligence (Dual VVT-i)
COMPRESSION RATIO	10.8:1
HORSEPOWER AT RPM	275 hp @ 6,200 <sup>10</sup>
TORQUE AT RPM	257 lb-ft @ 4,700 <sup>10</sup>
EMISSION RATING	Tier 2 Bin 5 Emissions Rating

### RX 450h

TYPE	60° V6, aluminum block and heads
DISPLACEMENT	3.5 litres
VALVETRAIN	Four cam, four valves per cylinder, with Variable Valve Timing with intelligence (VVT-i)
COMPRESSION RATIO	12.5:1
ELECTRIC-DRIVE MOTOR	Front and rear (AWD) high-output, permanent-magnet, electric-drive motors with EV mode
TOTAL SYSTEM HORSEPOWER	295 hp <sup>10,21</sup>
EMISSION RATING	Tier 2 Bin 3 Emissions Rating

## DRIVETRAIN

### RX 350

DRIVE WHEELS	Active Torque Control all-wheel drive with variable torque split and manual-locking centre differential (AWD)  Vehicle Stability Control (VSC), <sup>13</sup> Traction Control (TRAC), Hill-start Assist Control (HAC) <sup>15</sup>  Vehicle Dynamics Integrated Management (VDIM) <sup>13</sup> (optional)
TRANSMISSION	Six-speed automatic Electronically Controlled Transmission with intelligence (ECT-i) with Sequential Shift and Snow modes

### RX 450h

DRIVE WHEELS	Part-time all-wheel drive (AWD) with rear electric drive motor(s) <sup>11</sup>  Vehicle Stability Control (VSC), <sup>13</sup> Traction Control (TRAC), Hill-start Assist Control (HAC) <sup>15</sup>  Vehicle Dynamics Integrated Management (VDIM) <sup>13</sup>
TRANSMISSION	Electronically controlled Continuously Variable Transmission with intelligence (ECVT-i) with Sequential Shift and Snow modes

## PERFORMANCE

### RX 350

FUEL ECONOMY ESTIMATES	11.8/8.3/10.2 L/100 km 24/34/28 mpg <sup>12</sup> (city/highway/combined)
AERODYNAMIC DRAG COEFFICIENT	0.33
TURNING CIRCLE	11.8 m/38.8 ft

### RX 450h

FUEL ECONOMY ESTIMATES	6.7/7.2/6.9 L/100 km 42/39/41 mpg <sup>12</sup> (city/highway/combined)
AERODYNAMIC DRAG COEFFICIENT	0.32
TURNING CIRCLE	11.4 m/37.4 ft

## CHASSIS

SUSPENSION	Front: Independent, struts with inversely wound coil springs, gas-pressurized shock absorbers, stabilizer bar  Rear: Independent, double-wishbone with coil springs, gas-pressurized shock absorbers, stabilizer bar
------------	--

STEERING	Electric Power Steering system (EPS) Sport-tuned Steering (RX 350 - optional)
----------	--

BRAKES	Four-wheel power-assisted discs, with four-sensor, four-channel Antilock Braking System (ABS), Electronic Brake-force Distribution (EBD) and Brake Assist (BA). <sup>14</sup>  Electronic Controlled Braking (ECB) with regenerative braking function (RX 450h)
--------	---

WHEELS AND TIRES	18-inch 5-spoke alloy wheels with P235/60R18 mud- and snow-rated tires. Temporary spare tire  <i>Optional:</i> 19-inch 7-spoke alloy wheels with P235/55R19 mud- and snow-rated tires (RX 350)  19-inch split-5-spoke alloy wheels with P235/55R19 mud- and snow-rated tires (RX 450h)
------------------	---

## STANDARD LUXURY FEATURES

### LUXURY AND CONVENIENCE

SmartAccess<sup>19</sup> with push-button Start/Stop  
Dual-zone automatic climate control with interior air filter  
Rear seat heater ducts  
Driver seat memory system (RX 450h)  
Power tilt-and-telescopic steering wheel  
Power windows with one-touch auto open/close  
Remote-linked opening for windows and available moonroof  
Power moonroof (RX 450h)  
Electrochromic (auto-dimming) inside rearview mirror with compass (RX 450h)  
Power door locks  
Power rear door with jam protection (RX 450h)  
Hybrid blue accented front headlamps, rear tail lamps, logos and badges (RX 450h)  
Cruise control  
Multifunction, in-key remote entry system with rolling-code technology  
Illuminated entry system with fadeout  
Accessory power outlet (12v), front console and rear cargo area  
HomeLink<sup>®20</sup> universal transceiver to operate compatible garage, gate, home lighting and home security systems  
Lexus Personalized Settings (LPS) to customize select electronic functions  
Roof mounted spoiler  
Silver painted roof rails (RX 450h)  
Rear privacy glass  
Sliding centre console with storage bin  
Dual illuminated vanity mirrors  
Retractable tonneau cover

### SEATING AND TRIM

Espresso bird's-eye maple woodtrim with light-grey interior or brown walnut woodtrim with parchment or black interior  
Premium fabric seat surfaces (RX 350)  
Perforated leather seat surfaces (RX 450h)  
Leather-wrapped steering wheel and shift knob  
8-way driver's and front passenger's (including lumbar) power seats  
Heated and ventilated front seats (RX 450h)  
Reclining and sliding rear seat (40/20/40 split)

### COMMUNICATION, AUDIO AND NAVIGATION

Lexus 9-speaker Premium Sound System with Automatic Sound Levelizer (ASL) and in-dash, single-feed, six-disc CD auto-changer  
8-inch LCD multi-information display  
Integrated backup camera<sup>2</sup> (RX 450h)  
Bluetooth<sup>®</sup> capability<sup>6</sup>  
Integrated XM<sup>®</sup> satellite radio<sup>1,4</sup>  
Satellite roof-mounted fin antenna  
USB and auxiliary iPod<sup>®5</sup>/MP3/Windows Media Audio (WMA) port (RX 450h)

### INSTRUMENTATION AND CONTROLS

Steering-wheel-mounted audio and display controls  
Liquid-crystal multi-information console display  
Electroluminescent instrumentation  
Outside temperature gauge  
Organic Light Emitting Diode (OLED) multi-information display in gauge cluster

## STANDARD SAFETY AND SECURITY FEATURES

### ACTIVE SAFETY

Four-wheel ventilated power-assisted disc brakes  
Electronic Controlled Braking (ECB2) (RX 450h)  
Smart Stop Technology  
Four-sensor, four-channel Antilock Braking System (ABS)  
Vehicle Dynamics Integrated Management (VDIM)<sup>13</sup> (RX 450h)  
Vehicle Stability Control (VSC)<sup>13</sup>  
Traction Control (TRAC)  
Brake Assist (BA)<sup>14</sup>  
Electronic Brake-force Distribution (EBD)  
Direct Tire Pressure Monitor System<sup>17</sup>  
Adaptive Front Lighting System (AFS) (RX 450h)  
Projector style halogen headlamps (RX 350)  
Bi-xenon High-Intensity Discharge (HID) headlamps with dynamic auto-levelling (RX 450h)  
Automatic high-beam feature (RX 450h)  
Headlamp washers  
Integrated foglamps  
Light Emitting Diode (LED) rear taillamps  
Rear-window defroster with auto-off timer  
Water-repellent front-door glass  
Rain-sensing intermittent windshield wipers with mist cycle  
Power-adjustable, outside heated mirrors with puddle lamps and integrated turn indicators  
Auto-dimming side view mirrors and auto tilt-down in reverse (RX 450h)

### PASSIVE SAFETY

Driver's and front passenger's dual-stage airbag system (SRS)<sup>18</sup>  
Front and rear seat-mounted side airbags (SRS)<sup>18</sup>  
Front and rear side curtain airbags (SRS)<sup>18</sup>  
Driver's and front passenger's knee airbags (SRS)<sup>18</sup>  
Active front headrests<sup>9</sup>  
Three-point seatbelts for all-seating positions, pre-tensioners with force limiters for front and outboard rear seats  
Automatic Locking Retractor/Emergency Locking Retractor (ALR/ELR) seatbelts for front and outboard mounted rear passenger seating positions. Emergency Locking Retractor (ELR) only for driver's seat and centre rear passenger seating position  
Height-adjustable front shoulder belt anchors  
Height-adjustable headrests for all seats  
Child Restraint Seat (CRS) tether anchor brackets for rear outboard seating positions  
Rigid body structure with front and rear crumple zones  
Side-impact door beams  
Reinforcements in pillars and door sills  
Impact-dissipating upper interior trim  
Collapsible steering column  
Collapsible brake pedal  
Rear bumper protector (RX 450h)  
Front and rear splash guards (RX 450h)

### SECURITY

Vehicle theft-deterrent and engine-immobilizer system, with in-key transponder  
Emergency interior trunk release  
Front door handle touch sensor lock/unlock  
Tool kit  
First aid kit



## OPTION PACKAGES

### RX 350

#### PREMIUM PACKAGE 1

- Perforated leather-seat surfaces
- Heated and ventilated front seats
- Driver seat memory system
- Electrochromic (auto-dimming) side view mirrors
- Electrochromic (auto-dimming) rear view mirror with digital compass
- Power moonroof
- Silver painted roof rails
- Power rear door with jam protection
- Rear bumper protector
- Front and rear splash guards
- Cargo area multi-purpose net
- Cargo mat

#### PREMIUM PACKAGE 2

Premium Package 1, plus:

- USB audio input
- Bi-xenon High-Intensity Discharge (HID) headlamps
- Automatic high-beam feature headlamps with dynamic auto-levelling
- Adaptive Front Lighting System (AFS)
- Electrochromic (auto-dimming) rear view mirror with digital compass and integrated backup camera<sup>2</sup>

#### TOURING PACKAGE

Premium Package 2, plus:

- 19-inch 7-spoke aluminum alloy wheels with P235/55R19 tires
- Voice-activated HDD Navigation System<sup>1</sup> with remote touch
- XM Real-Time Traffic<sup>®1,4</sup> capability
- 12-speaker Lexus premium audio system
- Rear subwoofer
- Backup camera<sup>2</sup> in navigation display
- One wallet size smart card key (delete digital compass in electrochromic rear view mirror)

#### SPORT PACKAGE

Touring Package, plus:

- Vehicle Dynamics Integrated Management (VDIM)<sup>13</sup>
- Heads-up display
- Sport-tuned suspension
- Unique alloy wheel finish

#### ULTRA PREMIUM PACKAGE 1

Touring Package, plus:

- Vehicle Dynamics Integrated Management (VDIM)<sup>13</sup>
- Premium leather seat surfaces
- Mark Levinson<sup>®</sup> 15-speaker Surround Sound Audio System<sup>3</sup> with 7.1 channel architecture and in-dash six-disc DVD auto-changer
- Wide-view side monitor system<sup>8</sup>
- Power retractable folding exterior mirrors
- Front seat power thigh support
- Intuitive Parking Assist
- Front illuminated doorsill trim
- Wood- and leather-wrapped steering wheel and shift knob

#### ULTRA PREMIUM PACKAGE 2

Ultra Premium Package 1, plus:

- Dual-screen DVD Rear-Seat Entertainment System (RSES)
- Audio and DVD remote control
- Two sets of wireless headphones<sup>7</sup>
- 115v/400-watt power outlet
- Roof rail crossbars<sup>22</sup>
- Heads-up display

## OPTION PACKAGES

### RX 450h

#### TOURING PACKAGE

- 19-inch split-5-spoke aluminum alloy wheels with P235/55R19 tires
- Voice-activated HDD Navigation System<sup>1</sup> with remote touch
- XM Real-Time Traffic<sup>®1,4</sup> capability
- 12-speaker Lexus premium audio system
- Rear subwoofer
- One wallet size smart card key (delete digital compass in Electrochromic rear view mirror)

#### ULTRA PREMIUM PACKAGE 1

Touring Package, plus:

- LED headlamps
- Premium leather seat surfaces
- Mark Levinson<sup>®</sup> 15-speaker Surround Sound Audio System<sup>3</sup> with 7.1 channel architecture and in-dash six-disc DVD auto-changer
- Wide-view side monitor system<sup>8</sup>
- Power retractable folding exterior mirrors
- Front seat power thigh support
- Intuitive Parking Assist
- Wood- and leather-wrapped steering wheel and shift knob
- Front illuminated doorsill trim

#### ULTRA PREMIUM PACKAGE 2

Ultra Premium Package 1, plus:

- Pre-Collision System (PCS)<sup>16</sup>
- Dynamic Radar Cruise Control<sup>24</sup>
- Heads-up display
- Dual-screen DVD Rear-Seat Entertainment System (RSES)
- Audio and DVD remote control
- Two sets of wireless headphones<sup>7</sup>
- 115v/400-watt power outlet
- Roof rail crossbars<sup>22</sup>

## PERSONALIZE YOUR LEXUS

- Block heater
- Bodyside mouldings
- Cargo liner
- Hood deflector
- Rear bumper protector
- Roof rack crossbars<sup>22</sup>
- Splash guards
- Towing hitch platform
- Towing hitch receiver<sup>23</sup>

## THE BEST WAY TO FINANCE YOUR NEW RX – EASILY, QUICKLY, AFFORDABLY.



Lexus Financial Services does nothing but finance or lease Lexus vehicles; thus, we know financing and we know Lexus. • Our interest rates are fully competitive and our terms flexible (up to 72 months). • Since we offer Web services, you can: A: check out our rate; B: save time by getting credit approved on-line – before checking out the vehicle(s) of your interest. • Finally, one-stop shopping (at all Lexus Dealerships) saves you time. We invite you to visit us at [lexus.ca](http://lexus.ca) or call us at 1-800-26-LEXUS.

LEXUS CANADA. Every effort has been made to ensure the specifications and equipment shown are accurate based on information available at time of printing. In some cases, certain changes in standard equipment, options or product delays may occur, which would not be reflected in this brochure. Lexus Canada reserves the right to make these changes without notice or obligation. Your Lexus Dealer is the best source for up-to-date information.



Lexus invites you to join us in Club Lexus, a very exceptional compilation of services, offers, special events and pertinent information available only to Lexus owners. To register for Club Lexus, please visit [lexus.ca](http://lexus.ca) or call 1-800-26-LEXUS.

Lexus is always looking for new ways to be respectful of the environment. As part of this effort, this paper contains post-consumer recycled material and has earned the Mixed Sources label as designated by the Forest Stewardship Council.



**1.** The Navigation System is designed to assist in locating an address or point of interest. Discrepancies may be encountered between the system and your actual location. Road system changes may affect the accuracy of the information provided. Rely on your common sense to decide whether to follow a specified route. Detailed coverage not available for every city or roadway. Periodic updates available at an additional cost. See your Navigation System *Owner's Manual* for further details. Navigational systems in some vehicles are available with bilingual capability. XM NavTraffic® requires a monthly service fee and is designed to provide real-time traffic or alternative routes of travel. NavTraffic will only be available in Montreal, Vancouver and Toronto. Both Montreal and Vancouver will only have incident data and Toronto will have both incident and flow data. **2.** The backup camera, available only with the Navigation System, does not provide a comprehensive view of the rear area of the vehicle. You should also look around outside your vehicle and use your mirrors to confirm rearward clearance. **3.** Mark Levinson is a registered trademark of Madrigal Audio Labs, Inc. a division of Harman International. **4.** Functioning Satellite Radio requires a compatible receiver and monthly service fee. Please see your Lexus Dealer for further details. Reception of satellite signal may vary depending on location. **5.** iPod is a registered trademark of Apple Inc. **6.** Lexus tests certain Bluetooth® capable phones for compatibility with Lexus vehicles. Please see your Lexus Dealer for details. Note that the recommendation of Lexus is not a warranty of the performance for any phone and that some problems may occur with any type of handset based on the phone software version or the service coverage available in your area. Some vehicles equipped with Bluetooth® technology are available with bilingual capability. **7.** Headphones are for passenger use only. Do not use while operating vehicle. **8.** The Wide-view Side Monitor does not provide a comprehensive view of the side areas of the vehicle. You should also look around outside your vehicle and use your mirrors to confirm clearance. Cold weather will limit effectiveness and view may become cloudy. **9.** Active headrests can help reduce the extent of whiplash in certain types of rear-end collisions. **10.** Ratings achieved using the required premium unleaded gasoline with an octane rating of 91 or higher. **11.** The RX450h is not designed to be driven off-road. **12. FUEL CONSUMPTION RATING.** These estimates are based on the Government of Canada's approved criteria and testing methods. The actual fuel consumption of the vehicle may vary. Refer to the Government of Canada publication *EnerGuide Fuel Consumption Guide*. **13.** Vehicle Stability Control (VSC) and if applicable Vehicle Dynamics Integrated Management (VDIM) are electronic systems designed to help the driver maintain vehicle control under adverse conditions. They are not substitutes for safe driving practices. Factors including speed, road conditions and driver steering input can all affect whether VSC and VDIM will be effective in preventing a loss of control. Please see your *Owner's Manual* for further details. **14.** Brake Assist is designed to help the driver take full advantage of the benefits of ABS. It is not a substitute for safe driving practices. Braking effectiveness also depends on proper brake-system maintenance and tire and road conditions. **15.** HAC is designed to help minimize backward rolling on steep ascents. This system is not a substitute for safe driving judgment and practices. Factors including speed, grade, surface conditions and driver input can all affect whether HAC will be effective in preventing a loss of control. Please see your *Owner's Manual* for further details. **16.** The Pre-Collision System is designed to help reduce the crash speed and damage in certain frontal collisions only. It is not a collision-avoidance system and is not a substitute for safe and attentive driving. System effectiveness depends on many factors, such as speed, driver input and road conditions. Please see your *Owner's Manual* for further information. **17.** The Lexus Tire Pressure Monitor alerts the driver when tire pressure is critically low. For optimal tire wear and performance, tire pressure should be checked regularly with a gauge; do not rely solely on the monitor system. Please see your *Owner's Manual* for details. **18.** All the airbag ("AB") systems are Supplemental Restraint Systems. All ABs (if installed) are designed to inflate only under certain conditions and in certain types of severe collisions: frontal and knee ABs typically inflate in frontal collisions; side and side curtain ABs in side collisions; Roll-Sensing Curtain ABs at a severe tilt degree, roll or lateral G-force. In all other accidents, the ABs will not inflate. To decrease the risk of injury from an inflating AB, always wear seatbelts, Do not use a rearward-facing child seat in any front passenger seat. Please see your *Owner's Manual* for further information/warnings. **19.** The SmartAccess system may interfere with some pacemakers or cardiac defibrillators. If you have one of these medical devices, please talk to your doctor to see if you should deactivate this system. **20.** HomeLink is a registered trademark of Johnson Controls. **21.** Maximum output indicates engine plus HV battery output. **22.** Roof rack capacity is 130 lb. Crossbars are not recommended for luggage. Please see your *Owner's Manual* for details. **23.** Before towing, confirm your vehicle and trailer are compatible, hooked up properly and you have any necessary additional equipment. Do not exceed any Weight Ratings and follow all instructions and cautions from your trailer-hitch manufacturer and vehicle *Owner's Manual*. The maximum amount you can tow depends on the total weight of any cargo, occupants and available equipment. **24.** Dynamic Radar Cruise Control was designed to assist the driver and is not a substitute for safe and attentive driving practices. Please see your *Owner's Manual* for important cautions and instructions.

Vehicles in this brochure shown with optional equipment. Some features mentioned and/or shown in this brochure may only be available as part of an optional package.

Under very cold conditions, the operation of some vehicle electronic systems using liquid crystal technology (such as CD, DVD, NAV and Audio displays) may be adversely affected until a warmer interior vehicle temperature is reached.

Lexus reminds you to place small children in CSA-approved car seats – in the rear seats, to always wear your seatbelts, and to drive safely.

