

GS



2013 LEXUS

 **LEXUS**
THE PURSUIT OF PERFECTION.

THE PURSUIT OF PERFECTION.

It is a philosophy that extends well beyond the confines of meticulously assembled sheet metal. An approach to the automobile not as a machine, but rather, an art form. Every curve, deliberate. Every detail, inspired. And where every aspect of the ownership experience is intended to be as rewarding and accommodating as the vehicles themselves. Because while there are certainly easier ways to build an automobile, pursuing perfection is the only way to create a Lexus.

With outstanding craftsmanship and innovation in every 2013 GS, you can experience the comfort of owning a true luxury vehicle, and enjoy all of life's perfect moments.



the all-new 2013
GS



The Bold, NEW EXPRESS



GS 350

Experience a bold step forward in performance, technology and design. Available with Navigation and Luxury Packages, the all-new GS features exceptional agility, performance Driving Modes and an assortment of leather and wood trims to make the interior all your own. And, for even more personalized comfort, the AWD Luxury Package features amenities like 18-way power front seats and rear-seat climate and audio controls.

GS 350 F SPORT

Take the exhilarating performance of the GS to the next level with an F Sport Package. Among its upgrades, it boasts an even more aggressive Sport S+ driving mode, a specially tuned sport suspension, 19-inch wheels and an available Lexus Dynamic Handling system. It also features a variety of exclusive design elements including a more aggressive front fascia and a 16-way Sport driver's seat with power side bolsters.

GS 450h

Equipped with the available Luxury or Technology Packages, the GS Hybrid defies compromise and convention. In addition to dynamic performance features like paddle shifters and a new Sport driving mode, you'll find a port- and direct-injected Atkinson-cycle engine that delivers a 6.4 L/100km¹¹ combined fuel consumption rating and acceleration that will be the envy of your V8-driving friends.

ION OF LEXUS

A photograph of two Lexus GS Series sedans in a modern, high-ceilinged showroom with large glass windows. The car in the foreground is a dark grey, shown from a front-quarter view. The car in the background is white, shown from a rear-quarter view. The floor is made of large, light-colored tiles. The lighting is soft and even, highlighting the cars' sleek lines.

INTRODUCING THE ALL-NEW 2013 GS SERIES

Introducing the new face of Lexus. Where multiple performance-driving modes and a commanding seating position invigorate you. Bold lines, sequential ambient lighting and an accommodating interior welcome you. Where Luxury and Technology Packages surround you with our finest materials and thinking. Available in multiple versions, including all-wheel drive, Hybrid and F SPORT, the GS Series doesn't just raise the bar. It sets a new one altogether.



12.3-INCH MULTIMEDIA DISPLAY

Giving you the ability to see and do more, the GS offers the industry's first available 12.3-inch high-resolution split-screen multimedia display. It provides immediate, simultaneous access to various systems, including navigation, audio or climate controls. And greets you with a customizable image when the ignition button is pressed.



THE FUTURE, FRONT AND CENTRE.

This is progress on full display. The available Navigation System¹ features an impressive 12.3-inch high-resolution split-screen multimedia display. The LED indicators on the premium analog clock illuminate, welcoming your approach. Drive Mode Select delivers customized performance. And the next-generation Remote Touch device glides and functions like a computer mouse. With the AWD Luxury Package, progress is taken to the next level. Eighteen-way power, heated and ventilated front seats trimmed in semi-aniline leather conform to you and your front passenger. And, with its three-zone climate-control system, rear-seat passengers can even use the armrest's controls to operate climate, audio and rear sunshade functions.

Designed by Lexus.

TAILORED BY YOU

YOUR ENTRANCE, CHOREOGRAPHED

As you approach, the ground is illuminated in soft white light from the side mirrors. The new LED dome and rear lamps begin to glow. As you unlock the doors, the analog LED clock and ambient lights in the door trim and foot wells come to life. Press the ignition button and the base of the Remote Touch device glows, the display animation begins, and the welcoming sequence culminates with the reveal of the gauge cluster.




YOUR PRIVATE CONCERT

Imagine an interior filled with sound so crisp and dimensional, it's as if your favourite band were sitting in the car with you. And a system so advanced it can account for the volume and tone of unwanted ambient noise. This is the available 835-watt,⁴ 17-speaker Mark Levinson® Premium Surround Sound Audio System.³ A triumph in automotive audio with its industry-leading Green Edge™ Technology.



AN INTERIOR ALL YOUR OWN

Three colours of leather trim from a timeless Black to a bold new Cabernet. Three types of decorative accents from Linear Espresso wood to Striated aluminum. Of course, such a wide range of colour combinations isn't all that sets the GS Series apart. Distinctive contrast stitching offers visual and tactile appeal to the centre console, door panel, shift knob and the entire length of the sculpted dash. And extensive hip and shoulder room lets you make the most of its spacious cabin. The GS Series also offers the added comfort of heat and ventilation in the standard 10-way adjustable front seats and the convenience of rain-sensing wipers and power rear sunshade.

A rear view of a dark-colored Lexus GS 350 RWD F SPORT driving on a track at night. The car is positioned on the right side of the frame, moving towards the left. The background is dark with blurred city lights and long, curved red light trails that suggest high speed and dynamic movement. The track surface is also blurred, showing white lane markings.

The leading edge,
HONED

INTRODUCING THE GS 350 RWD F SPORT

Take performance and style to the next level with unique race-inspired components and design elements on the F SPORT Package. An all-new F SPORT suspension, larger front brakes with two-piece rotors and four-piston calipers, 19-inch LFA-inspired wheels and available Lexus Dynamic Handling system deliver jaw-dropping performance. And exterior styling is dramatically enhanced by an aggressive front fascia, F SPORT grille and distinctive rear lip spoiler.



LEXUS DYNAMIC HANDLING SYSTEM

Whether carving precisely through a canyon or manoeuvring at lower speeds, the available all-new Lexus Dynamic Handling system anticipates and delivers the appropriate handling through multiple integrated systems. At high speeds, an all-new Dynamic Rear Steering system turns the rear wheels in the same direction as the front for optimal agility and control.



At low speeds, the rear wheels turn in the opposite direction for precise manoeuvring and a tighter turning circle. All the while, the Variable Gear-Ratio Steering (VGRS) system provides optimized responsiveness and a more direct steering feel.

EXHILARATION

central

DRIVING MODES

Every GS enables you to customize your performance with Drive Mode Select. In ECO mode, a calming blue light surrounds the gauge cluster while climate and throttle settings are optimized for increased fuel efficiency. Sport S mode changes the lighting to a fiery red and alters the powertrain for faster gear changes and more dynamic throttle mapping.



Available Sport S+ mode goes a step further by also tightening the suspension and increasing steering feel. In both Sport modes, the transmission's shift points are automatically altered coming into and out of corners for sharper acceleration. And during manual gear changes, steering-wheel-mounted paddle shifting is enhanced by precise downshift rev-matching.



OPTIMIZED POSITION, PERSONALIZED PERFORMANCE.

While the driver's seat, pedals and steering wheel in every GS were positioned and angled for maximum visibility and driving engagement, the F SPORT Package delivers an even headier dose of exhilaration. Beyond its aluminum accents and the option of an exclusive Cabernet leather trimmed interior, you'll be embraced by a 16-way adjustable Sport driver's seat with power side bolsters, four-way lumbar and added thigh support. You'll feel the fitted grip of an extra-thick LFA-inspired sport steering wheel and F SPORT shift knob, both trimmed in perforated leather. And you'll experience a surge of adrenaline when you step on its aluminum sport pedals, a perfectly tuned exhaust note filling the cabin as you use the lightning-fast paddle shifters to downshift into a corner. One tip: Don't forget to exhale.

**LEXUS
HYBRID
DRIVE**



6.2 L/100 KM HIGHWAY¹

Boasting fuel efficiency and emission ratings that would be the envy of many 2.0-litre compacts, you may be tempted to think performance was somehow sacrificed in the development of the GS 450h. Think again. Equipped with the world's first Atkinson-cycle engine with port and direct fuel injection for greater response, it bursts off the line – generating the G-forces of a high-performance V8. And in Sport S mode, the voltage levels of both electric motors are boosted to their maximum while the Hybrid System Indicator is replaced with a tachometer.

Never has so much intensity required
SO LITTLE FUEL



ILLUMINATED DESIGN

The distinctive three-lamp design available on the GS 450h won't just catch your eyes, it's designed to help them see more. Utilizing High and Low Beam LED headlamps, the GS 450h can project illumination farther and wider than conventional headlamps. Innovative design on the GS 450h isn't just limited to technology. A lower rear fascia conceals the exhaust manifolds.



And, by widening the vehicle's stance and lowering the hybrid battery, not only was more balance achieved, but trunk space was improved dramatically.



ONE MORE WAY IT COMMANDS ATTENTION.

You can't prepare for hazards you can't see: a simple thought behind the incredibly advanced next-generation Pre-Collision System¹⁴ available on the GS. It connects to the Driver Attention Monitor System²⁰ cameras which are designed to detect if you have your eyes closed or are facing away from the road when an obstacle is detected ahead. If the system determines either condition is met, it will attempt to warn you through a series of beeps and visible indications. If you still fail to respond, the GS is designed to automatically begin braking up to a full two seconds before impact, helping you to potentially avoid a collision altogether. Should an impact occur, however, you can take comfort in knowing the GS is equipped with a class-leading 10-airbag system¹⁶ and, in the case of rear collisions, features new Whiplash Injury Lessening (WIL)²¹ front seats designed to help decrease the severity of whiplash-type injuries.

NIGHT VIEW SYSTEM

An available Night View System²² uses near-infrared equipped headlamps designed to detect objects far beyond the reach of your low-beam headlamps, displaying the image on the 12.3-inch multimedia display.



HEADS-UP DISPLAY AND BLIND SPOT MONITOR

Available Heads-up Display can project key information like simple navigation¹ directions, speed, your current gear and RPM onto the windshield in front of you, helping you to remain focused on the road ahead. Using radar technology, the available Blind Spot Monitor²³ is designed to detect vehicles positioned or approaching in the adjacent lanes. At speeds above 40 km/h, if a vehicle is detected, the driver is notified by an illuminated icon in the outer mirror on the affected side.

THE DEALERSHIP EXPERIENCE

When you visit one of our dealerships, make yourself at home by helping yourself to a beverage and internet access.[†] When picking up your new Lexus, our associates will make the transition seamless. We can help you with everything from setting your favourite radio stations to connecting and transferring your compatible cell phone's contacts to the available Bluetooth[®] system on your vehicle. Rest assured your car will experience the finest treatment as well, with a complimentary car wash with every service.

CLUB LEXUS

A complimentary Club Lexus membership is offered to all new, pre-owned or leased Lexus owners. Club Lexus provides an exceptional compilation of services, offers, special events, and pertinent information that's of interest to Lexus drivers. You can also view your service history, the status of your factory warranty or Extra Care Protection (ECP) coverage, and the current status of your Lexus Financial Services (LFS) loan or lease. Sign up today and start taking advantage of all of the features at www.clublexus.ca.

LEXUS LIFESTYLE COLLECTION

Enhance your ownership experience even further with the "The Lexus Lifestyle Collection" Catalogue. Every year, Lexus assembles a wide range of brand name products that exemplify the finest design and craftsmanship in the world, which include designer luggage, Lexus apparel, stunning watches, Royal Doulton Glassware and much more. An exceptional item can be found for every driver.

To learn more about the various exclusive services that Lexus offers, please visit www.lexus.ca.

SERVICE COMMITMENT

On top of enjoying the highest quality product, Lexus also delivers through a professional Dealer network, a unique and uncompromising level of after-sales service: First Class Service Concept. The highest level of professionalism and vehicle support ensure that the Lexus ownership experience is as luxurious as the vehicles.

MAINTENANCE

We offer the first two scheduled maintenance services at no charge to you. The first service at 1,600 km will include a thorough vehicle inspection and a road test. The second inspection at 8,000 km will include a change of engine oil and oil filter.

EXTRA CARE PROTECTION

Extend beyond the new vehicle warranty and enhance your peace of mind with Lexus Extra Care Protection.

WARRANTY

Our Lexus Warranty Comprehensive Coverage includes:

- 48 months/80,000 km (includes tires).
- Hybrid-Related Components:
96 months/160,000 km
(applies to battery control module, hybrid vehicle control module, hybrid battery and the inverter/converter).
- Powertrain: 72 months/110,000 km.
- Corrosion Perforation:
72 months/unlimited kilometres.
- Major Emission Control Components:
96 months/130,000 km.

Please see your Lexus Dealer for details.

Lexus will even provide five days of alternate transportation if your vehicle is required to stay at the dealership for an extended period of time due to a warrantable condition.

ROADSIDE ASSISTANCE

As a proud owner of a Lexus vehicle, you won't have to worry about obtaining assistance when mishaps requiring Emergency Roadside Service or Mechanical Breakdown Towing are needed. Throughout Canada and the continental U.S., our Central Emergency Roadside Services Operator will always be there to ensure you receive prompt, efficient services from one of the many facilities qualified under our approved Roadside Assistance Program. Twenty-four hours a day, 365 days a year, we will be there to help.

[†]Internet is available in most Lexus locations.

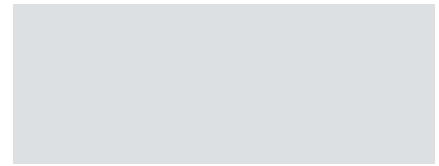
EXTERIOR COLOURS



0077
STARFIRE PEARL



01H9
NEBULA GREY PEARL



01J2
LIQUID PLATINUM



0212
OBSIDIAN



0217
STARLIGHT BLACK MICA



03S8
RIVIERA RED



04V3
FIRE AGATE PEARL



08W3
METEOR BLUE MICA

INTERIOR COLOURS



SADDLE TAN LEATHER



BLACK LEATHER



CABERNET LEATHER

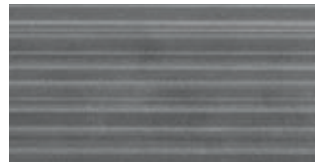
INTERIOR TRIM



DARK BROWN WALNUT†



LINEAR ESPRESSO WOOD



STRIATED ALUMINUM††

COLOUR AVAILABILITY

	STARFIRE PEARL	NEBULA GREY PEARL	LIQUID PLATINUM	OBSIDIAN	STARLIGHT BLACK MICA	RIVIERA RED	FIRE AGATE PEARL	METEOR BLUE MICA	DARK BROWN WALNUT†	LINEAR ESPRESSO WOOD	STRIATED ALUMINUM††	
SADDLE TAN LEATHER	■●	■●	■●		■●	■●	■●	■●	■	■		
BLACK LEATHER	■●▲	■●▲	■●▲	▲	■●	■●▲	■●	■●	■	■	▲	
CABERNET LEATHER	▲	▲	▲	▲		▲					▲	
INTERIOR COLOUR	■ GS 350 ● GS 450h ▲ GS 350 F SPORT PACKAGE			EXTERIOR COLOUR								INTERIOR TRIM

Visit our Web site and try on a colour. lexus.ca

†GS 350 AWD Luxury Package only. ††GS 350 F SPORT Package only.

Colours and interiors are subject to change during model year. Please see your Lexus Dealer for details.

GENERAL

TYPE	Five-passenger luxury sport sedan (GS 350) Five-passenger hybrid luxury sport sedan (GS 450h)
CONSTRUCTION	Welded-steel unibody
CURB WEIGHT	1,685 kg/3,795 lb (GS 350 RWD) 1,765 kg/3,970 lb (GS 350 AWD) 2,320 kg/5,125 lb (GS 450h)

ENGINE

	GS 350
TYPE	60° V6, aluminum block and heads, direct and port fuel injection
DISPLACEMENT	3.5 litres
VALVETRAIN	Four cam, four valves per cylinder, with Dual Variable Valve Timing with intelligence (Dual VVT-i)
HORSEPOWER AT RPM	306 hp @ 6,400 ⁹
TORQUE AT RPM	277 lb-ft @ 4,800 ⁹
EMISSION RATING	Tier 2 Bin 5 Emissions Rating
	GS 450h
TYPE	Atkinson-cycle 60° V6, aluminum block and heads, direct and port fuel injection
DISPLACEMENT	3.5 litres
VALVETRAIN	Four cam, four valves per cylinder, with Dual Variable Valve Timing with intelligence (Dual VVT-i)
ELECTRIC-DRIVE MOTOR	High-output, permanent-magnet electric motor
TOTAL SYSTEM HORSEPOWER	338 hp ^{8,9}
EMISSION RATING	Tier 2 Bin 3 Emissions Rating

DRIVETRAIN

	GS 350
DRIVE WHEELS	Rear-wheel drive (RWD) Available all-wheel drive (AWD)
TRANSMISSION	Six-speed automatic, Electronically Controlled Transmission with intelligence (ECT-i) and paddle shifters
	GS 450h
DRIVE WHEELS	Rear-wheel drive (RWD)
TRANSMISSION	Electronically controlled Continuously Variable Transmission with intelligence (ECVT-i) and paddle shifters

CHASSIS

SUSPENSION	Front: Independent, double-wishbone with coil springs, gas-pressurized shock absorbers and stabilizer bar Rear: Independent, multi-link with coil springs, gas-pressurized shock absorbers and stabilizer bar Adaptive Variable Suspension (AVS) with electronically modulated damping (GS 350 AWD Luxury Package, GS 450h) F Sport-tuned Adaptive Variable Suspension (AVS) with electronically modulated damping (GS 350 with F Sport Package)
STEERING	Electronic Power Steering (EPS) system, 2.8 turns lock-to-lock Variable Gear-Ratio Steering (VGRS), progressive power-assisted rack-and-pinion, Dynamic Rear Steering (DRS), 2.2-2.6 turns lock-to-lock (GS 350 RWD with F Sport Package)
BRAKES	Four-wheel power-assisted discs, with four-sensor, four-channel Anti-lock Brake System (ABS), Electronic Brake-force Distribution (EBD) and Brake Assist (BA) ¹³ Integrated regenerative braking system (GS 450h) 13.1-inch ventilated front discs with two-piston calipers, 12.2-inch ventilated rear disc with single-piston sliding calipers 14.0-inch ventilated discs, pin-mounted to an aluminum hat with four-piston front calipers; 12.2-inch ventilated rear discs with single-piston sliding calipers (GS 350 RWD with F Sport Package)
WHEELS AND TIRES	18-inch split-5-spoke alloy wheels with P235/45R18 all-season tires (Standard) 18-inch split-9-spoke alloy wheels with P235/45R18 all-season tires (GS 350 AWD and GS 450h with Luxury or Technology Packages) 19-inch split-5-spoke alloy wheels with P235/40R19 (front), P265/35R19 (rear) tires (GS 350 RWD with F Sport Package) 19-inch split-5-spoke alloy wheels with P235/40R19 tires (GS 350 AWD with F Sport Package)

BODY AND DIMENSIONS

HEADROOM

front/rear

975/960 mm - 38.4/37.6 in

LEGROOM

front/rear

1,145/830 mm - 45.1/32.7 in

SHOULDER ROOM

1,450/1,410 mm - 57.1/55.5 in

TRUNK CAPACITY

530 litres/18.7 cubic feet (GS350)

464 litres/16.4 cubic feet (GS450h)

FUEL-TANK CAPACITY

66 litres/14.5 gallons

HEIGHT

1,455 mm/57.3 in



WIDTH

1,840 mm/72.4 in



WHEEL BASE

2,850 mm/112.2 in

OVERALL LENGTH

4,845 mm/190.7 in

PERFORMANCE

TOP TRACK SPEED

(electronically limited)

GS 350
GS 350 RWD 230 km/h¹⁰
GS 350 AWD 209 km/h¹⁰

FUEL ECONOMY ESTIMATES

(city/highway/combined)

GS 350 RWD 10.7/7.1/9.1 L/100 km¹¹
 26/40/31 mpg¹¹
GS 350 AWD 11.1/7.6/9.5 L/100 km¹¹
 25/37/30 mpg¹¹

AERODYNAMIC DRAG COEFFICIENT

0.26

TURNING CIRCLE

GS 350 RWD 10.6 m/34.8 ft
GS 350 AWD 10.6 m/34.8 ft

GS 450h

TOP TRACK SPEED

(electronically limited)

209 km/h¹⁰

FUEL ECONOMY ESTIMATES

(city/highway/combined)

6.5/6.2/6.4 L/100 km¹¹
 43/46/44 mpg¹¹

AERODYNAMIC DRAG COEFFICIENT

0.26

TURNING CIRCLE

10.6 m/34.8 ft

WHEELS



18-inch split-5-spoke alloy wheels
STANDARD



18-inch split-9-spoke alloy wheels
AVAILABLE

GS 350 AWD with LUXURY or TECHNOLOGY PACKAGES
 GS 450h with LUXURY or TECHNOLOGY PACKAGES



19-inch split-5-spoke alloy wheels
AVAILABLE

GS 350 with F SPORT PACKAGE

STANDARD LUXURY FEATURES

GS 350

LUXURY AND CONVENIENCE

- Drive Mode Select
- SmartAccess¹⁷ with push-button Start/Stop
- Dual-zone automatic climate control with interior air filter, smog sensor and automatic recirculation mode; S-Flow energy-saving airflow control uses occupant detection sensors to optimize front-seat airflow
- Power tilt-and-telescopic steering column with automatic tilt-away
- Lexus Memory System to control power driver's seat (except lumbar), outside mirrors and steering wheel
- Power tilt-and-slide moonroof with one-touch open/close and sliding sunshade
- Power windows with one-touch auto open/close feature
- Retained accessory power for windows and moonroof
- Electrochromic (auto-dimming) inside rearview mirror and outside mirrors
- Power rear sunshade
- White LED interior illumination
- HomeLink^{®24} universal transceiver to operate compatible garage, gate, home lighting and home security systems
- Lexus Personalized Settings (LPS) to customize select vehicle functions
- Headlamp washers
- Cruise control
- Rain-sensing intermittent windshield wipers with deicer

SEATING AND TRIM

- High-gloss linear espresso wood interior trim
- Perforated leather-trimmed interior
- Leather-trimmed steering wheel and shift knob
- 10-way driver's and front passenger's (including lumbar) power seats
- Height-adjustable headrests for all seats
- Heated and ventilated front seats

AUDIO, COMMUNICATION AND INSTRUMENTATION

- Lexus 12-speaker Premium Surround Sound System with Automatic Sound Levelizer (ASL) and CD/DVD player
- Eight-inch high-resolution colour multimedia display
- 3.5-inch colour TFT multi-information display in gauge cluster
- Remote Touch controller
- Integrated XM[®] Satellite Radio⁵
- USB audio input for iPod^{®6}/compatible music player integration with audio system
- Bluetooth^{®7} capability with automatic phonebook synchronization
- Advanced voice command
- Bluetooth^{®7} audio profile for wireless integration of compatible music players with in-vehicle audio system
- Backup camera²
- Steering-wheel-mounted audio, phone and display controls
- Drive Mode Select with Normal, ECO and Sport S mode

OPTION PACKAGES

GS 350 NAVIGATION PACKAGE

- Heated steering wheel
- Navigation System¹ with route guidance
- 12.3-inch high-resolution split-screen multimedia display

GS 350 AWD LUXURY PACKAGE

Includes Navigation Package equipment plus:

- Heated wood and leather-trimmed steering wheel and shift knob
- Semi-aniline leather trimmed interior
- 18-way power front seats with power-adjustable four-way lumbar, side bolsters, thigh support, articulating backrest, extendable lower cushions and adjustable calf support for passenger seat; butterfly headrests
- Lexus Memory System for front-passenger seat
- Heated rear seats
- Three-zone automatic climate control
- 18-inch split-9-spoke alloy wheels
- Adaptive Variable Suspension (AVS) with electronically controlled shock absorbers
- Rear-door manual sunshades
- Adaptive Front Lighting System (AFS)
- Drive Mode Select adds Sport S+ mode
- Direct Tire Pressure Monitor System with tire inflation pressure display function¹⁵

GS 350 AWD TECHNOLOGY PACKAGE

Includes GS 350 AWD Luxury Package equipment plus:

- Heads-up Display
- Mark Levinson[®] 17-speaker, 835-watt⁴ Premium Surround Sound Audio System³ with 7.1 channel architecture, digital amplifier and Green Edge[™] speaker technology
- Blind Spot Monitor System²³

GS 350 AWD TECHNOLOGY PLUS PACKAGE

Includes GS 350 AWD Technology Package equipment plus:

- Pre-Collision System (PCS)¹⁴
- Dynamic Radar Cruise Control¹⁹
- Clearance and backup sonar
- Lexus Night View System²²
- Driver Attention Monitor System²⁰

GS 350 RWD F SPORT PACKAGE

Includes GS 350 Navigation Package equipment plus:

- 19-inch split-5-spoke alloy wheels
- Staggered fitment summer tires
- F SPORT-tuned Adaptive Variable Suspension (AVS) with electronically controlled shock absorbers
- Lexus Dynamic Handling System with Dynamic Rear Steering (DRS)
- Variable Gear-Ratio Steering (VGRS)
- F SPORT steering wheel, shift knob and scuff plates
- 14-inch, two-piece front-brake rotors with four-piston calipers
- 16-way F SPORT driver's seat with power side bolsters, thigh support, four-way lumbar and extendable lower cushion
- Striated aluminum interior trim
- Drive Mode Select adds Sport S+ mode
- Aluminum sport pedals with rubber inserts
- Black headliner
- F SPORT exterior styling including unique front bumper, upper and lower grille inserts, rear valence and rear lip spoiler

GS 350 AWD F SPORT PACKAGE

Includes GS 350 Navigation Package equipment plus:

- 19-inch split-5-spoke alloy wheels with all-season tires
- F SPORT-tuned Adaptive Variable Suspension (AVS) with electronically controlled shock absorbers
- 16-way F SPORT driver's seat with power side bolsters, thigh support, four-way lumbar and extendable lower cushion
- Striated aluminum interior trim
- Drive Mode Select adds Sport S+ mode
- Three-spoke F SPORT steering wheel, shift knob and scuff plates
- Aluminum sport pedals with rubber inserts
- Black headliner
- F SPORT exterior styling including unique front bumper, upper and lower grille inserts, rear valence and rear lip spoiler

STANDARD LUXURY FEATURES

GS 450h

Includes standard GS 350 features plus:

- Adaptive Variable Suspension (AVS) with electronically controlled shock absorbers
- Heated steering wheel
- Water-repellent front-door glass
- Dynamic tachometer and Hybrid System Indicator, based on selected drive mode
- Rear valence with concealed exhaust outlets
- Climate control front seats with heat and air-conditioning
- Navigation System¹ with route guidance
- 12.3-inch high-resolution split-screen multimedia display

OPTION PACKAGES

GS 450h LUXURY PACKAGE

- Heated wood and leather-trimmed steering wheel
- Mark Levinson® 17-speaker, 835-watt⁴ Premium Surround Sound Audio System³ with 7.1 channel architecture, digital amplifier and Green Edge™ speaker technology
- Lexus Memory System for front-passenger seat
- Rear-door manual sunshades
- Heated rear seats
- Premium leather seat surfaces
- 18-way power front seats with power-adjustable four-way lumbar, side bolsters, thigh support, articulating backrest, extendable lower cushions and adjustable calf support
- 18-inch split-9-spoke alloy wheels

GS 450h TECHNOLOGY PACKAGE

Includes GS 450h Luxury Package equipment plus:

- Blind Spot Monitor System²³
- Heads-up Display
- Pre-Collision System (PCS)¹⁴
- Driver Attention Monitor System²⁰
- Clearance and backup sonar
- Lexus Night View System²²
- Light Emitting Diode (LED) headlamps



STANDARD SAFETY AND SECURITY FEATURES

ACTIVE SAFETY

- Four-wheel ventilated power-assisted disc brakes
- Four-sensor, four-channel Anti-lock Brake System (ABS)
- Vehicle Dynamics Integrated Management (VDIM)¹² with cutoff switch
- Vehicle Stability Control (VSC)¹²
- Traction Control (TRAC)
- Brake Assist (BA)¹³
- Electronic parking brake with auto and hold functions
- Electronic Brakeforce Distribution (EBD)
- Smart Stop Technology¹⁸
- Direct Tire Pressure Monitor System¹⁵
- Bi-Xenon™ High-Intensity Discharge (HID) headlamps with LED daytime running lights and dynamic auto-levelling
- Integrated foglamps (excluding GS 350 F SPORT)
- LED taillamps
- Power-adjustable outside mirrors with defoggers, puddle lamps, integrated turn indicators and auto tilt-down in reverse

PASSIVE SAFETY

- Driver's and front passenger's dual-stage airbag system (SRS)¹⁶
- Front and rear seat-mounted side airbags (SRS)¹⁶
- Front and rear side curtain airbags (SRS)¹⁶
- Driver's and front passenger's knee airbags (SRS)¹⁶
- Whiplash Injury Lessening (WIL) front seats²¹
- Three-point seatbelts for all-seating positions, pre-tensioners with force limiters for front and outboard rear seats
- Automatic Locking Retractor/Emergency Locking Retractor (ALR/ELR) seatbelts for front and outboard mounted rear-passenger seating positions. Emergency Locking Retractor (ELR) only for driver's seat and centre rear-passenger seating position
- Height-adjustable front shoulder belt anchors
- Child Restraint Seat (CRS) tether anchor brackets for rear outboard seating positions
- Rigid body structure with front and rear crumple zones
- Side-impact door beams
- Reinforcements in pillars and door sills
- Impact-dissipating interior trim

SECURITY

- Vehicle theft-deterrent and engine-immobilizer system, with in-key transponder
- Emergency interior trunk release
- Wheel locks

THE BEST WAY TO FINANCE YOUR NEW GS – EASILY, QUICKLY, AFFORDABLY.



• Lexus Financial Services does nothing but finance or lease Lexus vehicles; thus, we know financing and we know Lexus. • Our interest rates are fully competitive and our terms flexible (up to 72 months). • Since we offer Web services, you can: A: check out our rate; B: save time by getting credit approved on-line – before checking out the vehicle(s) of your interest. • Finally, one-stop shopping (at all Lexus Dealerships) saves you time. We invite you to visit us at lexus.ca or call us at 1-800-26-LEXUS.

LEXUS CANADA. Every effort has been made to ensure the specifications and equipment shown are accurate based on information available at time of printing. In some cases, certain changes in standard equipment, options or product delays may occur, which would not be reflected in this brochure. Lexus Canada reserves the right to make these changes without notice or obligation. Your Lexus Dealer is the best source for up-to-date information.



LEXUS invites you to join us in Club Lexus, a very exceptional compilation of services, offers, special events and pertinent information available only to Lexus owners. To register for Club Lexus, please visit lexus.ca or call 1-800-26-LEXUS.

Lexus is always looking for new ways to be respectful of the environment. As part of this effort, this paper contains post-consumer recycled material and has earned the Mixed Sources label as designated by the Forest Stewardship Council.

1. The Navigation System is designed to assist in locating an address or point of interest. Discrepancies may be encountered between the system and your actual location. Road system changes may affect the accuracy of the information provided. Rely on your common sense to decide whether to follow a specified route. Detailed coverage not available for every city or roadway. Periodic updates available at an additional cost. See your Navigation System *Owner's Manual* for further details. Navigational systems in some vehicles are available with bilingual capability XM NavTraffic® requires a monthly service fee and is designed to provide real-time traffic or alternative routes of travel. NavTraffic will only be available in Montreal, Vancouver and Toronto. Both Montreal and Vancouver will only have incident data and Toronto will have both incident and flow data. **2.** The backup camera does not provide a comprehensive view of the rear area of the vehicle. You should also look around outside your vehicle and use your mirrors to confirm rearward clearance. **3.** Mark Levinson is a registered trademark of Harmon International Industries Inc. **4.** Continuous average power, all channels driven, at less than 0.1% THD; 20-20,000 Hz. **5.** Functioning Satellite Radio requires a compatible receiver and monthly service fee. Please see your Lexus Dealer for further details. Reception of satellite signal may vary depending on location. **6.** iPod is a registered trademark of Apple Inc. All rights reserved. **7.** Lexus tests certain Bluetooth® capable phones for compatibility with Lexus vehicles. Please see your Lexus Dealer for details. Note that the recommendation of Lexus is not a warranty of the performance for any phone and that some problems may occur with any type of handset based on the phone software version or the service coverage available in your area. Some vehicles equipped with Bluetooth® technology are available with bilingual capability. **8.** Maximum output indicates engine plus HV battery output. **9.** Ratings achieved using the required premium unleaded gasoline with an octane rating of 91 or higher. **10.** Performance figures are for comparison only and were obtained with prototype vehicles by professional drivers using special safety equipment and procedures. **11.** FUEL CONSUMPTION RATING. These estimates are based on the Government of Canada's approved criteria and testing methods. The actual fuel consumption of the vehicle may vary. Refer to the Government of Canada publication *EnerGuide Fuel Consumption Guide*. **12.** Vehicle Stability Control (VSC) and if applicable Vehicle Dynamics Integrated Management (VDIM) are electronic systems designed to help the driver maintain vehicle control under adverse conditions. They are not substitutes for safe driving practices. Factors including speed, road conditions and driver steering input can all affect whether VSC and VDIM will be effective in preventing a loss of control. Please see your *Owner's Manual* for further details. **13.** Brake Assist is designed to help the driver take full advantage of the benefits of ABS. It is not a substitute for safe driving practices. Braking effectiveness also depends on proper brake-system maintenance and tire and road conditions. **14.** The Pre-Collision System is designed to help reduce the crash speed and damage in certain frontal collisions only. It is not a collision-avoidance system and is not a substitute for safe and attentive driving. System effectiveness depends on many factors, such as speed, driver input and road conditions. Please see your *Owner's Manual* for further information. **15.** The Lexus Tire Pressure Monitor alerts the driver when tire pressure is critically low. For optimal tire wear and performance, tire pressure should be checked regularly with a gauge; do not rely solely on the monitor system. Please see your *Owner's Manual* for details. **16.** All the airbag ("AB") systems are Supplemental Restraint Systems. All ABs (if installed) are designed to inflate only under certain conditions and in certain types of severe collisions: frontal and knee ABs typically inflate in frontal collisions; side and side curtain ABs in side collisions; Roll-Sensing Curtain ABs at a severe tilt degree, roll or lateral G-force. In all other accidents, the ABs will not inflate. To decrease the risk of injury from an inflating AB, always wear seatbelts. Do not use a rearward-facing child seat in any front passenger seat. Please see your *Owner's Manual* for further information/warnings. **17.** The SmartAccess system may interfere with some pacemakers or cardiac defibrillators. If you have one of these medical devices, please talk to your doctor to see if you should deactivate this system. **18.** Smart Stop Technology operates only in the event of certain simultaneous brake and gas pedal applications. When engaged, the system will reduce engine power to help the brakes to bring the vehicle to a stop. Factors including speed, road conditions, driver input can all impact stopping distance. Smart Stop Technology is not a substitute for safe and attentive driving and does not guarantee instant stopping. Please see your *Owner's Manual* for further details. **19.** Dynamic Radar Cruise Control was designed to assist the driver and is not a substitute for safe and attentive driving practices. Please see your *Owner's Manual* for important cautions and instructions. **20.** The Driver Attention Monitor is designed to alert the driver if a potential hazard is detected ahead and the driver's face appears to be turned away. It is not a collision-avoidance system and is not a substitute for safe and attentive driving. System effectiveness depends on many factors. Please see your *Owner's Manual* for further information. **21.** Whiplash Injury Lessening (WIL) front seats can help reduce the extent of whiplash in certain types of rear end collisions. **22.** Night View is designed to alert the driver to objects beyond the projected light of the low-beam headlamps. Driver should only glance at image occasionally. Factors including cold weather and the vehicle's air conditioner may limit the effectiveness of the system. **23.** Do not rely exclusively on the Blind Spot Monitor System to determine if a lane change is safe. Always look over your shoulder and use your turn signal before changing lanes. There are severe limits to the function, detection range and clarity of the monitor system. For a complete list of limitations and directions regarding use of the monitor system, please see your *Owner's Manual*. **24.** HomeLink is a registered trademark of Johnson Controls.

Vehicles in this brochure shown with optional equipment. Some features mentioned and/or shown in this brochure may only be available as part of an optional package.

Under very cold conditions, the operation of some vehicle electronic systems using liquid crystal technology (such as CD, DVD, NAV and Audio displays) may be adversely affected until a warmer interior vehicle temperature is reached.

Lexus reminds you to place small children in CSA-approved car seats - in the rear seats, to always wear your seatbelts, and to drive safely.



lexus.ca 1-800-26-LEXUS Lexus, One Toyota Place, Toronto, Ontario M1H 1H9 COTCI-13GSE-10 (9M) Please recycle.
To sign up for information on Lexus, go to **experience.lexus.ca**