

2012

Avalon



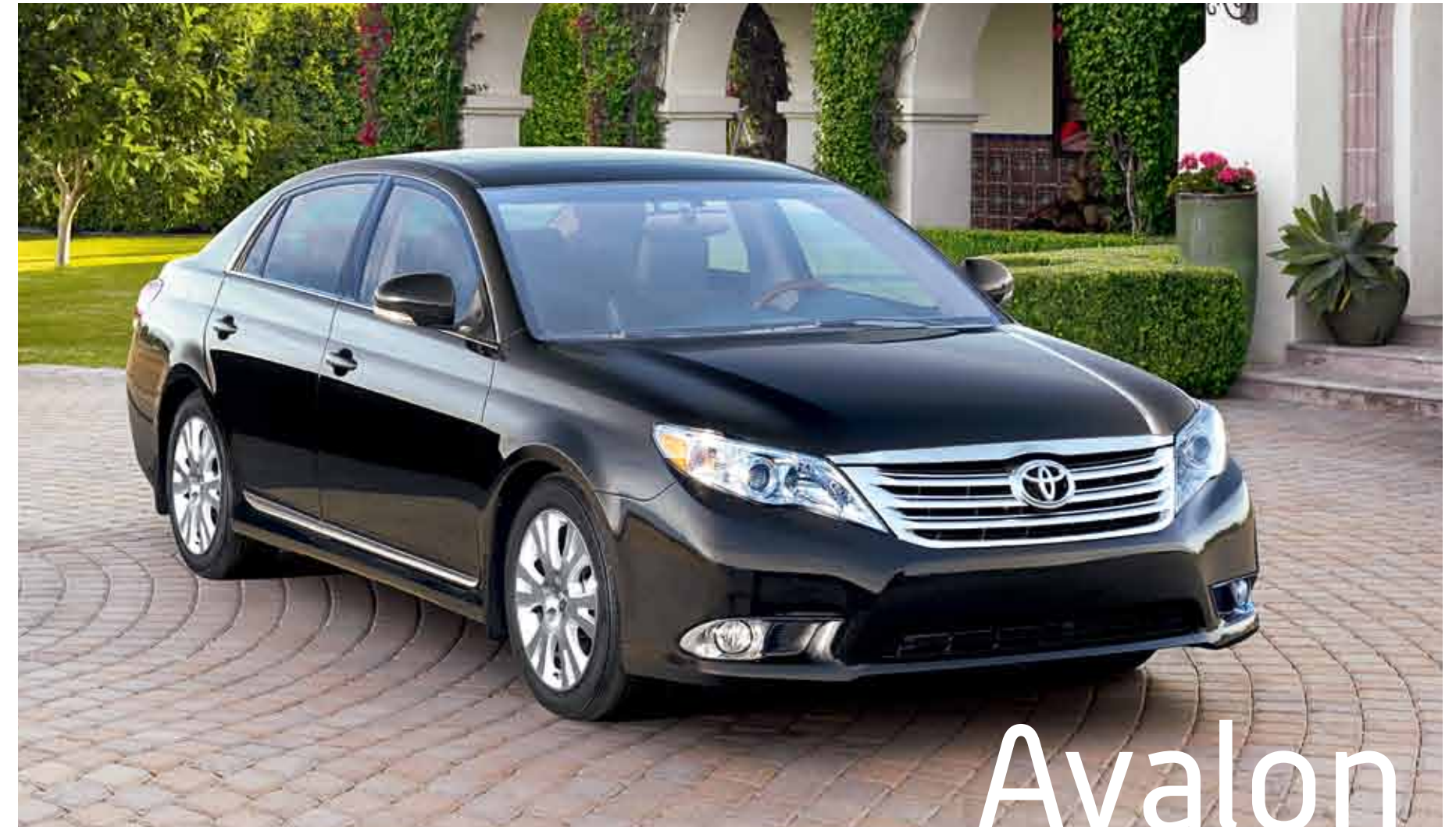
 **TOYOTA**
make things better

make things better.

Three words that influence everything we do at Toyota. They shape our commitment to safety and reliability, proven by the fact that 80% of Toyotas built in the past 20 years are still on the road today*.



They are words that inspire innovation, with breakthrough technologies like our Hybrid Synergy Drive and the Star Safety System™. They shape our commitment to this country, from our Canadian manufacturing plants, to the programs we support in communities big and small. At Toyota, we all strive to make things better, in our products, our services and in the lives of our customers. It's how we approach everything we do, every day.



Avalon

A simple drive turns into a pleasurable cruise with the 2012 Avalon. With state-of-the-art luxury, an exceptionally spacious interior and a host of technological innovations, you'll savour every moment. Backed by a powerful V6 engine, the Avalon braves the elements with style and grace. Crafting the perfect balance between refinement and performance – that's how we make things better with the 2012 Avalon.

Avalon XLS

Indulge your senses and elevate your expectations of comfort, convenience and style with the 2012 Avalon. Enjoy a unique and tailored driving experience with the power 8-way adjustable driver's seat, lumbar support and exterior heated mirrors. It has a suspension tuned to give you a silky-smooth ride, and a quiet, comfortable cabin that you can fill with music streamed via Bluetooth^{®3} from your favourite compatible devices.

C. LUXURIOUS COMFORT

Step inside Avalon and right away you're struck by the spaciousness. Settle into the driver's seat and relax: You have plenty of room where you need it. And Avalon makes it easy to find the seating position that's perfect for you. At the touch of a button, you can adjust for height, angle and rake or dial in the power lumbar support.

D. POWER MOONROOF

Power tilt/slide moonroof with sunshade.



A. HEATED FRONT SEATS

You can adjust the heated front leather seats to your desired temperature.

B. RECLINING REAR SEATS

Your guests can relax in the comfort of unequalled luxury with rear-seat climate vents, a rear seatback that reclines and a nearly flat floor for enhanced legroom.



XLS shown in Blizzard Pearl.

Technology

A. Avalon XLS shown in Black leather with a voice-activated touch-screen DVD navigation system.⁴ Enter in your favourite place to eat and if listed, the navigation system⁴ will cross-reference it with the listed address. Avalon can help even if you don't have a particular place in mind, displaying multiple locations of gas stations, restaurants or the like that happen to be in your vehicle's vicinity.

B. TAILLIGHT WITH LIGHT PIPE

The Avalon's taillights incorporate LED "Light Pipes" to help ensure that the brake lights illuminate quickly, a feature that's both stylish and functional.

C. SATELLITE RADIO AND JBL® AUDIO SYSTEM

Avalon offers XM® Satellite Radio. No matter what the music source, the 12-speaker JBL Synthesis® sound system reproduces audio with remarkable clarity and richness.

D. BLUETOOTH®³ WIRELESS TECHNOLOGY

With compatible Bluetooth®³ phones, simply press a control button on the steering wheel and you can answer calls and converse with your callers using the audio system of your Avalon as a speakerphone.

E. USB PORT

Insert your flash drive or compatible MP3 player into the USB port to listen to your personal music playlist. Avalon also includes an auxiliary audio jack.



A



B



C



D



E

Safety

The 2012 Avalon is equipped with advanced technologies to help enhance driving safety. Avalon's Supplemental Restraint System¹ includes: advanced driver and front passenger airbags, driver and front passenger front seat-mounted side airbags, a driver's knee airbag and front and rear head/side curtain airbags. Avalon also features an energy-absorbing steering column, front and rear crumple zones and side-impact door beams which are strategically designed to protect the passenger cabin in the event of a collision.



DIRECT TIRE PRESSURE MONITOR SYSTEM

Avalon's Direct Tire Pressure Monitor System provides early notification of critically low tire pressure.



MIRROR WITH INTEGRATED TURN SIGNAL

Avalon's sideview mirrors are as practical as they are refined.

In addition to an integrated turn signal, they also feature puddle lamps. The driver-side mirror even has an auto-dimming feature.

STAR SAFETY SYSTEM™

2012 Avalon comes standard with the Star Safety System™. This integration of active safety features is designed to protect occupants by helping drivers avoid accidents in the first place. The Star Safety System™ includes Vehicle Stability Control (VSC),⁵ Traction Control (TRAC), Anti-lock Brake System (ABS), Electronic Brake-force Distribution (EBD), Brake Assist (BA),⁶ and Smart Stop Technology (SST).⁷

- VSC** VEHICLE STABILITY CONTROL⁵
- TRAC** TRACTION CONTROL
- ABS** ANTI-LOCK BRAKE SYSTEM
- EBD** ELECTRONIC BRAKE-FORCE DISTRIBUTION
- BA** BRAKE ASSIST⁶
- SST** SMART STOP TECHNOLOGY⁷

Toyota was the first full-line manufacturer to make all of the elements of the Star Safety System™ standard on every new vehicle. Visit toyota.ca for more details.

2012 Colours



070 Blizzard Pearl^A



1F7 Classic Silver Metallic^B



1G3 Magnetic Grey Metallic^B



202 Black^A



3R0 Sizzling Crimson Mica^B



4T8 Sandy Beach Metallic^A

Interior colour option

^A Ivory Leather.

^B Black Leather.

Please see your Toyota Dealer for details.

New vehicle warranty summary

NO DEDUCTIBLES – NO TRANSFER FEES

COMPREHENSIVE COVERAGE – 3 YEARS OR 60,000 KM This warranty includes 24 hour Roadside Assistance and other benefits, as well as coverage of repairs on any part of the vehicle that is defective in material or workmanship under normal use and maintenance. Different warranties apply to original tires.

POWERTRAIN COMPONENTS – 5 YEARS OR 100,000 KM This warranty covers repairs to powertrain components that are defective in material or workmanship under normal use and maintenance.

MAJOR EMISSION CONTROL COMPONENTS – 8 YEARS OR 130,000 KM

This warranty covers repairs to specified major emission components that are defective in material or workmanship under normal use and maintenance.

CORROSION PERFORATION – 5 YEARS UNLIMITED DISTANCE Any sheet metal found, under normal use, to have developed a perforation from corrosion due to defects in material or workmanship.

Discover more with Toyota

At Toyota, our goal is to continuously make things better for you. That's why we offer a wide range of programs and services before and after your vehicle purchase designed to help make your Toyota experience the best it can be.



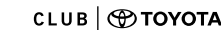
Fewer emissions and pollutants.¹ More kilometres on less fuel. And designed with power and performance in mind. Available in Prius, Prius v, Camry and Highlander, these latest generation Toyota hybrids offer you the best of all worlds.



Toyota Dealers are dedicated to making the experience of owning a Toyota both satisfying and rewarding. With Toyota Genuine Parts and factory-trained technicians, only your Toyota Dealer can deliver the quality service experience that you and your Toyota deserve.



If you're looking at leasing or financing, we're here to help. We provide competitive interest rates, flexible terms, and an easy online pre-approval process. The toughest decision should be choosing which Toyota you want. Visit us at www.toyotafinancialservices.ca.



Enhance your Toyota ownership experience by joining Club Toyota – a complimentary and exclusive online service for Toyota owners. Benefit from an abundance of interactive services, and information conveniently at your fingertips. Register today at clubtoyota.ca.



With Extra Care Protection you receive inflation protected coverage from mechanical failures, road emergencies, and much more. It's affordable peace of mind. Consult your Toyota Dealer for details.



The Toyota Mobility program is dedicated to addressing the transportation needs of Toyota Owners who have a disability, or know a family member with a disability or mobility issue. The program offers cash assistance, resource information and financing for adaptive equipment for their vehicle.



All new Toyota cars and trucks include a full tank of gas, roadside assistance and floor mats.

¹Compared against similarly equipped conventional gasoline powered vehicles. Based on North American sales data and Federal Tier 2 engine emission requirements.

Committed to Canadians, today and tomorrow.



Being a leader in the automotive industry does not simply begin and end with making great vehicles. It also means being a leader in the community. Toyota Canada and its dealerships across Canada fund the Toyota Canada Foundation, a non-profit organization that works to make a difference for Canadians, through direct community involvement supporting the environment, education and safety.

Through initiatives as diverse as the Toyota Earth Day Scholarship Program, Scientists in School, the Traffic Injury Research Foundation, and even the Toyota Volunteer Training Days program with Special Olympics Canada, the Toyota Canada Foundation is committed to Canadian communities, today and tomorrow.

To learn more, visit us at toyota.ca.



2012 Avalon Features

INTERIOR	XLS
JBL® Audio, AM/FM CD/MP3/WMA In-Dash 4-Disc Changer, Audio Auxiliary Input Jack, 12-Speakers, Bluetooth® ³ Capability, USB Audio Input, Integrated XM® Satellite Radio, Digital Signal Processor, Radio Data System, Rear Subwoofer, Diversity Antenna, Roof-Mounted Antenna	●
Dual Zone Automatic Climate Control w/Air Filtration & Rear Seat Vents	●
Heated Driver & Front Passenger Seats w/Variable Heat Setting	●
Leather Seat Surfaces	●
Power 8-Way Adjustable Driver & Front Passenger Seats w/Power Lumbar Support	●
Driver Seat Memory System	●
60/40 Split Rear Bench Seat, Manual Reclining Backrest, Centre Headrest, Fold Down Centre Armrest w/Cup Holders	●
All-Position Vertically Adjustable Headrests	●
Power Door Locks w/Anti-Lockout Features	●
Power Auto Door Lock w/Shifter Activation	●
Power Windows w/Auto Up/Down	●
Window Jam Protection	●
Optitron Electronic Gauges: Speedometer, Tachometer, Coolant Temperature,	●
6.5" Multi-Information LCD Display w/Outside Temperature, Instant Fuel Economy, Average Fuel Economy, Average Speed & Trip Computer Information	●
Dual Extendable Sun Visors	●
Dual Illuminated Vanity Mirrors	●
Auto-Dimming Rear View Mirror w/Digital Compass	●
4-Spoke Tilt, Telescopic Steering Wheel w/Audio & Climate Controls	●
Wood & Leather-Wrapped Steering Wheel & Shift Knob	●
Woodgrain Style Interior Trim	●
Simulated Leather Door Trim	●
Chrome Inner Door Handles & Accents	●
Aluminum Door Scuff Plates	●
Trunk Area Carpet	●
Carpet Floor Mats	●
Cruise Control	●
Digital Quartz Clock	●
DVD Based Navigation System ⁴ w/Integrated Backup Camera	●
Front & Rear Cup Holders	●
Coat Hooks	●

INTERIOR (cont'd)	XLS
Front Centre Console Storage Area w/Sliding Armrest	●
Driver & Front Passenger Expandable Door Pockets	●
Front Seat Back Pockets	●
Passenger Rear Door Map Pockets	●
Integrated Garage Door Opener	●
Trunk-Mounted Cargo Net	●
Front & Rear Area Lamps	●
Door Courtesy Lamps	●
Glove Box Lamp	●
Front Seat Map Lamps	●
Trunk Lamp	●
Accessory Power Outlet	●
Multi-Function In-Key Remote Keyless Entry System	●
Illuminated Entry/Exit Fade-Out System	●
EXTERIOR	
17" Aluminum Alloy Wheels, Wheel Locks	●
Electric Rear Window Defroster w/Timer	●
High Solar Energy Absorbing Tinted Window Glass	●
Power Tilt/Slide Moonroof w/Sunshade	●
Front & Rear Splash Guards, Chrome Grille	●
Dual, Heated, Power Adjustable Mirrors w/Integrated Signal Lamps & Puddle Lamps	●
Auto-Dimming Driver's Side Exterior Mirror	●
Double Fluidics Spray Washer Nozzle	●
Variable Intermittent Wipers, Mist Feature	●
Multi-Reflector Halogen Headlamps w/LED "Light Pipes"	●
Automatic Headlamp System	●
LED "Light Pipe" Taillights	●
Integrated Front Fog Lamps	●
Dual Rear Exhaust Outlets	●

SAFETY	XLS
STAR SAFETY SYSTEM ™ – includes Vehicle Stability Control (VSC) ⁵ , Traction Control (TRAC), Anti-lock Brake System (ABS), Electronic Brake-force Distribution (EBD), Brake Assist (BA) ⁶ & Smart Stop Technology (SST) ⁷	●
Dual-Stage Driver & Front Passenger Airbag Supplemental Restraint System (SRS) ¹	●
Front Seat-Mounted Side Airbags (SRS) ¹	●
Driver Knee Airbag (SRS) ¹	●
Front & Rear Head/Side Curtain Airbags (SRS) ¹	●
Active Front Headrests w/Whiplash Protection	●
Front Seatbelt Pre-Tensioners & Force Limiters	●
All-Position 3-Point Lap & Shoulder Belts	●
Front Seatbelt Anchor Height Adjusters	●
Rear Outboard Seatbelt Anchor Height Adjusters	●
Anchor Points for Child Restraint Seats	●
Rear Side Seatbelt Comfort Guides	●
Child Protector Rear Door Locks	●
Assist Grips	●
Engine Immobilizer	●
Vehicle Anti-Theft System	●
Power Fuel Lid & Trunk Release	●
Trunk Entrapment Release	●
Side Impact Protection Door Beams	●
Low Fuel, Low Washer Fluid, Door Ajar, Driver & Front Passenger Seatbelt Warning Indicators	●
Direct Tire Pressure Monitoring System	●

ACCESSORIES
All-Season Mats
Block Heater

2012 Avalon Specifications

MECHANICAL	XLS
Engine	3.5 Litre, V6, DOHC, 24-Valve, Dual Variable Valve Timing w/intelligence (Dual VVT-i), Electronic Throttle Control System w/intelligence (ETCS-i), Acoustic Control Induction System
Compression Ratio	10.8:1
Horsepower	268 hp (200 kW) @ 6200 rpm
Torque	248 lb.ft. [336 N.m.] @ 4700 rpm
Suspension	Front: MacPherson Strut w/Offset Coil Springs & Stabilizer Bar Rear: Dual-Link Independent, MacPherson Strut w/Offset Coil Springs & Stabilizer Bar
Drivetrain	Front Engine/Front Wheel Drive Vehicle Stability Control (VSC) ⁵ , Traction Control (TRAC)
Transmission	6-Speed, Electronically Controlled Automatic Transmission (ECT) w/Sequential Multi-Mode Shifter
Brakes	Power-Assisted, Ventilated Front Discs, Solid Rear Discs, Anti-lock Brake System (ABS) w/Electronic Brake-force Distribution (EBD) & Brake Assist (BA) ⁶
Steering	Rack & Pinion w/Variable Power Assist
Tires	P215/55R17, All-Season Radials, Full Size Spare w/Alloy Wheel

DIMENSIONS	mm (in.)	XLS
Length	5020 [197.6]	●
Width	1850 [72.8]	●
Height (Unloaded)	1470 [57.9]	●
Wheelbase	2820 [111.0]	●
Track	Front: 1580 [62.2] Rear: 1565 [61.6]	●
Seating Capacity	5	●
Headroom	Front: 987 [38.9] Rear: 953 [37.5]	●
Legroom	Front: 1049 [41.3] Rear: 1038 [40.9]	●
Shoulder Room	Front: 1509 [59.4] Rear: 1479 [58.2]	●
Ground Clearance	135 [5.3]	●
CURB WEIGHT	kg (lb.)	
	1620 [3620]	●
CARGO CAPACITY	m ³ (cu.ft.)	
	0.408 [14.4]	●
COEFFICIENT OF DRAG	cd	
	0.28	●
FUEL CAPACITY	litres (gal)	
	70.0 [15.4]	●
FUEL CONSUMPTION RATING ²		
City/Highway/Combined	L/100 km	mpg (imperial gallon)
	10.7/7.0/9.1	26/40/31

^[1] All Toyota vehicles shown in this brochure, have Supplemental Restraint Systems (SRS) which, depending on the model, may include driver and front passenger airbags, a driver's knee airbag, front seat-mounted side airbags or side curtain airbags. For important safety information about the Supplemental Restraint System in a vehicle, please see the Owner's Manual or contact your local Toyota Dealer.

^[2] These estimates are based on the Government of Canada's approved criteria and testing methods. The actual fuel consumption of this vehicle may vary. Refer to the Government of Canada publication *EnerGuide Fuel Consumption Guide*.

^[3] Toyota tests certain phones for compatibility with Bluetooth technology. Some vehicles equipped with Bluetooth technology are available with bilingual capability. Note that the recommendation of Toyota is not a warranty of the performance for any phone and that some problems may occur with any type of handset based on the service coverage available in your area. Please see your Toyota Dealer for details.

^[4] The Toyota Navigation system is designed to assist in locating an address or point of interest. Discrepancies may be encountered between the system and your actual location. Changes in street names, road closures, traffic flow or other road system changes may affect the accuracy of the mapping software. Rely on your common sense to decide whether or not to follow a specified route. Detailed coverage is not available in every city. Optional periodic geographic updates are available at an additional cost. The Navigational systems in some vehicles are available with bilingual capability. Please see your Navigation system Owner's Manual and your Toyota Dealer for further details.

^[5] Vehicle Stability Control (VSC) is an electronic system designed to help the driver maintain vehicle control under adverse conditions. It is not a substitute for safe driving practices. Factors including speed, road conditions and driver steering input can all affect whether VSC will be effective in preventing a loss of control.

^[6] Brake Assist is designed to help the driver take full advantage of the benefits of ABS. It is not a substitute for safe driving practices. Braking effectiveness also depends on proper brake-system maintenance and tire and road conditions.

^[7] Smart Stop Technology operates only in the event of certain simultaneous brake and gas pedal applications. When engaged, the system will reduce engine power to help the brakes bring the vehicle to a stop. Factors including speed, road conditions and driver input can all impact stopping distance. Smart Stop Technology is not a substitute for safe and attentive driving and does not guarantee instant stopping.

Toyota Canada Inc. Every effort has been made to ensure the specifications and equipment shown are accurate based on information available at time of printing. In some cases, certain changes in production capacity, standard equipment, options or product delays may occur which would not be reflected in this brochure. Toyota Canada Inc. reserves the right to make these changes without notice or obligation. The Toyota website toyota.ca – or your Toyota Dealer is your best source for up-to-date information.

At Toyota **quality, safety** and **sustainability** are built into every vehicle we make. To learn more about Toyota's commitment to manufacturing safe, high quality, long lasting vehicles – and to see the awards we've won for doing just that – visit toyota.ca.



Yaris Hatchback



Camry



Camry Hybrid



RAV4



Sequoia



Yaris



Venza



Prius v



Highlander



Tacoma



Corolla



Avalon



Prius



FJ Cruiser



Tundra



Matrix



Sienna



Highlander Hybrid



4Runner



Join the Conversation - Follow us on Facebook at facebook.com/toyotacanada and on Twitter at twitter.com/toyotacanada.

 **TOYOTA**
make things better



Toyota recognizes its duty to safeguard the environment. Please recycle. PRINTED IN CANADA C0002-0432E-25 8M