



The Power to Surprise

2016  
SEDONA



**SEDONA**

**WAY BEYOND  
THE  
EXPECTED.**

You don't travel with the herd. You find your own road. So you want way more than any conventional multi-purpose vehicle has to offer. You want advanced technology and bold design – on top of essentials like versatility and safety. Where do you find the vehicle that's made to order for your personality and attitude? Take a close look at the one that's turning heads in all the right ways – the 2016 Kia Sedona MPV. Don't just aim for more, get more – way more.





# THINK AHEAD.

Anticipation is everything. Ready to anticipate a truly engaging driving experience? It's probably not what you expect from a vehicle this capable. But Sedona ups the ante. And while you're looking ahead to the next stretch of open road, Sedona helps you anticipate any potential hazards that may stand in your way, with available systems like adaptive smart cruise control<sup>1</sup> and blind-spot detection<sup>1</sup> with lane-change assist.<sup>1</sup> There's lots to look forward to behind the wheel of Sedona.

//////////



#### SOLID PERFORMANCE

Sedona features a 276-horsepower 3.3-litre Gasoline Direct Injection (GDI) V6 engine. It's tuned for outstanding mid-range torque for impressive acceleration. Its six-speed Sportmatic<sup>®</sup> transmission allows you to choose between automatic mode or, for even sportier driving, clutch-free manual shifting, which also assists in controlling descent speeds.

#### STRONG TOWING CAPACITY

The 3.3-litre Gasoline Direct Injection (GDI) V6 engine produces 248 lb.-ft. of torque, giving Sedona a standard towing capacity of 3,500 lb.<sup>2</sup>

#### INNOVATIVE TECHNOLOGY<sup>1</sup>

Advanced, available systems like adaptive smart cruise control, 360° camera monitoring system, front collision warning system, front and rear parking sonars and rearview camera enhance driver awareness — and peace of mind.





# IT DOES THE ADAPTING, SO YOU DON'T HAVE TO.

It's like fitting a square peg in a round hole. One day, you're taking the local team across the province – the next you're moving furniture across town. Does your vehicle roll with the punches? Or does it fight back? Sedona adapts effortlessly. First, it offers available seven and eight-passenger seating. Then it makes the seats highly adaptable. There are available<sup>10</sup> Slide-n-Stow second row seats that slide forward and backward, depending on who or what you're bringing with you. Yes, you can bring it all with you.



## EASY TO LIVE WITH

An available Smart-Power Liftgate opens automatically if you simply stand next to your vehicle for three seconds with the available Smart Key in your possession — which is especially helpful when you have your hands full.



## STAIN-RESISTANT CLOTH

Sedona's cloth seating features repel-and-release YES Essentials<sup>®3</sup> technology for stain resistance, so even messy spills clean up easily. Plus, advanced fibers help eliminate lingering odours that moisture can leave behind.



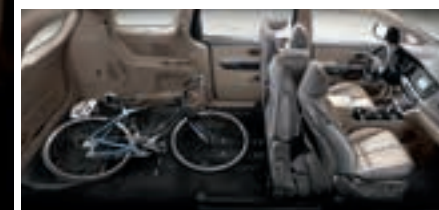
## HEATED AND COOLED SEATS

Available heated front and 2<sup>nd</sup> row seats help ensure comfortable driving in cold weather. Enjoy optimal comfort in warm weather with available air-cooled front seats that circulate cool air through perforations in the seat leather.



## UNIQUE SLIDE-N-STOW SEAT DESIGN

When you need more cargo area, you can take advantage of the available<sup>10</sup> second-row seats' innovative stand-up design. Simply flip a lever to stand the seats upright, where they stay locked in place. Third-row seats conveniently fold down into the floor, and they also feature a versatile 60:40 split-fold design, giving you the option of carrying a combination of passengers and cargo.





MAKE  
YOURSELF  
RIGHT AT HOME.

Everyone is a one-of-a-kind. So a one-size-fits-all approach to seating just doesn't cut it. You need to be able to customize your seating position. That's why Sedona includes an available twelve-way power-adjustable driver's seat, including power lumbar support, as well as an eight-way power adjustable front passenger seat. Want to elevate comfort to an even higher level? Choose Sedona SXL with its premium, two-tone Nappa-leather seat trim and reclining second-row, first-class sliding lounge seats. That's driving – on your own terms.

#### DUAL SUNROOF

Front and rear sunroofs on Sedona SXL models let you enjoy a feeling of spaciousness and fill the cabin with fresh air. They also feature dual sliding sunshades that are quick and easy to open and close.



**HEATED STEERING WHEEL**  
Sedona SX includes a wide variety of luxurious features designed to provide comfortable driving all year long. The available heated steering wheel is especially nice on cold winter mornings.



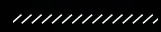
**COOLING GLOVE BOX**  
An available cooling glove box lets you keep beverages chilled on long drives, while an available second glove box provides additional storage space.



**DRIVER'S MEMORY SEAT**  
Available memory settings for two drivers are located on the driver's door. They provide the luxury and comfort of personalized ergonomics for the available power-adjustable driver's seat, including the power sideview mirrors.



**NAPPA LEATHER SEATS**  
With premium full-grain Nappa-leather seating, the Sedona SXL combines an elegant feel and upscale styling for traveling in extraordinary comfort.





# GO BY FEEL.

Feel – it's what defines that sense of connection behind the wheel. The key is the science of ergonomics. You'll see plenty of evidence of ergonomics at work inside Sedona. From its steering wheel-mounted controls to the available voice-command navigation system,<sup>4</sup> everything is placed for intuitive operation. Soft-touch material is used throughout the interior, not only adding an upscale look, but also a rich feel to the cabin. It just feels right.



International model shown.



#### REARVIEW CAMERA<sup>1</sup>

When you shift into reverse, a high-resolution video with active parking guidelines appears on the available rearview camera display. Like an extra set of eyes, it shows you what you might not see in the rearview mirror or by looking over your shoulder.



#### 'CLEAN AIR'™ CLUSTER IONIZER

The available tri-zone air-conditioning system includes a cluster ionizer. It works silently and efficiently within the system, to help purify air in the cabin.



#### PUSH-BUTTON START

To make everyday driving more convenient, the available Smart Key remote lets you start or stop the engine with the push of a button, even when you have the key fob in your pocket or purse.



#### SMART WELCOME

The available Smart Welcome system is activated by the available Smart Key remote. When you get close to your Sedona, interior and door-handle lights go on and the power-folding mirrors unfold.



Home of 100% commercial-free music, news, talk and entertainment. To find out more about SiriusXM satellite radio,<sup>8</sup> speak to your Kia dealer or visit [siriusxm.ca](http://siriusxm.ca)

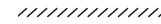


The 2016 Sedona is available with Bluetooth<sup>®</sup> wireless technology to provide hands-free calling connectivity with Bluetooth-enabled cell phones.



# SAFETY ISN'T ONE THING, IT'S EVERYTHING.

Without a doubt, nothing takes priority over safety. The question is: how is that best achieved? The answer is by incorporating safety into all aspects of design and engineering. In Sedona, that means using a series of advanced safety systems to maintain control, even in harsh road conditions and during a range of emergency situations. Better yet, these safety systems are integrated and designed to function automatically. So you can do your part by concentrating on safe driving.



## PREPARED FOR THE UNEXPECTED

Improved interior cabin safety is delivered through the use of high tensile strength steel reinforcing the front, rear and sides, oversized bumper beams, a ringed structure at the centre pillar area, and a chassis design that disperses impact along a number of different paths.

### BRAKE ASSIST SYSTEM

If the Brake Assist System (BAS) detects emergency braking, based on how quickly you step on the brake pedal, it instantly applies full braking force, which helps shorten your overall stopping distance.

### HILL ASSIST CONTROL

To help keep you from rolling backward when starting off on a steep hill, Hill Assist Control (HAC) automatically maintains braking pressure for up to two seconds after you take your foot off the brake pedal – enough time for engine power to move you forward.

### REINFORCED BODY

The side doors on Sedona are reinforced with steel beams to help absorb impact energy and deflect it away from passengers. The A and B pillars (front and middle support pillars) are also reinforced to help strengthen the body structure.

### LATCH SYSTEM

The standardized Lower Anchors and Tethers for Children (LATCH) system makes it easier to securely install a compatible child seat in any of the three rear seating positions.



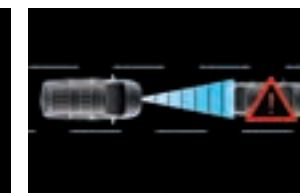
### 360° CAMERA MONITORING SYSTEM<sup>1</sup>

The available 360° camera monitoring system utilizes four cameras, located at the front, rear, and sides, to provide visibility all around the vehicle. This helps enhance the driver's view when maneuvering into parking spaces.



### BLIND-SPOT DETECTION WITH LANE-CHANGE ASSIST<sup>1</sup>

The available radar system helps detect vehicles in the driver's blind spot and then provides alerts. Lane-change assist audibly alerts you if you signal to enter a lane with a vehicle already present.



### FRONT COLLISION WARNING SYSTEM<sup>1</sup>

Available Front Collision Warning System activates alerts when the vehicle detects objects immediately ahead that may cause a potential impact, encouraging the driver to decelerate.



### FRONT AND REAR PARKING SONARS<sup>1</sup>

An available sonar system is concealed in the front and rear bumpers. When you're parking, it gives an audible warning if it detects certain objects close to your vehicle.

### ELECTRONIC STABILITY CONTROL

Electronic Stability Control (ESC) monitors Sedona's response to your throttle, brake and steering inputs in tight corners and evasive-maneuvre situations. If and when input and response are out of sync, ESC briefly takes over to restore stability through precise brake and engine-control interventions.

### VEHICLE STABILITY MANAGEMENT SYSTEM<sup>1</sup>

The available Vehicle Stability Management system (VSM) adds steering direction control capability, assisting when appropriate to further stabilize the vehicle. It helps you regain control and return the vehicle to its intended path.

### TRACTION CONTROL

Sedona's standard Traction Control System (TCS) senses wheel spin during acceleration and uses engine-torque reduction to slow the spinning wheel(s) and transfer torque to the wheels that have the most traction.

### CORNERING BRAKE CONTROL

Provides side-to-side brake-pressure proportioning using the electronic brake-force distribution system, resulting in optimized vehicle stability when braking into a turn.





# KIA, DELIVERING ON A PROMISE.

At Kia, we make a promise to everyone who drives our vehicles – a promise to design, engineer and build our vehicles to the most rigorous, world-class standards. This promise guides the development of vehicles that embody Kia's signature style, precision engineering, outstanding performance, innovative features and advanced safety systems. Our dedication to quality and value has been widely recognized – one reason why Kia has been named a Top 100 brand in Interbrand's Best Global Brands 2014 report.

In addition, Kia earned two prestigious J.D. Power awards, one for Highest Ranked Large Car in Initial Quality in the U.S. for Cadenza and Highest Ranked Small SUV in Initial Quality in a Tie in the U.S. for Sportage.<sup>11</sup> This honour recognizes our success at producing fuel-efficient and affordable vehicles. While the accolades are always welcome, our mission extends beyond impressing the industry or media. What makes us most proud is exceeding your expectations of a truly exemplary driving and ownership experience.



GT4 Stinger concept



## STUNNING DESIGN

Under the direction of renowned President and Chief Design Officer Peter Schreyer — Kia vehicles have captured worldwide attention for their interior and exterior styling, which represents the collaborative work of designers who have created a look that makes every Kia recognizable at first sight. Today, the lineup consists of vehicles that fill owners as well as Kia's designers with pride.

## EXTENSIVE RESEARCH AND DEVELOPMENT

Kia's R&D procedures are rigorous and exhaustive. At proving grounds around the world, vehicles undergo unrelenting tests. A world-class wind tunnel provides testing in winds up to 200 km/h. Utilizing heavy-rain-and-snowfall testing chambers and a road simulator, Kia puts its vehicles through punishing tests as part of a commitment to develop exceptionally durable and safe vehicles.

## IMPRESSIVE WARRANTY PROGRAM

Kia engineers are passionate about producing vehicles that are exceptionally well-designed and reliable. Their dedication to quality and attention to detail give Kia the confidence to back every model with an outstanding warranty program.

## TAKING ON THE COMPETITION

The Kia Racing team is dedicated to competing against world-class competition — and winning. That dedication is part of Kia's belief that the knowledge gained in competition can be applied to the entire Kia lineup to provide you with vehicles that perform beyond your expectations. The Kia Racing team includes championship-winning drivers with proven track records, and after two podium finishes early in the 2014 season you can look for Kia in the winner's circle at racetracks across North America in the future.



## FIFA WOMEN'S WORLD CUP CANADA 2015

As the FIFA Official co-Automotive Partner, Kia is proud of its initiatives to promote soccer globally. This summer Canada will be hosting the 2015 Women's World Cup with games played in venues from coast to coast bringing all Canadians together to cheer and show their excitement.

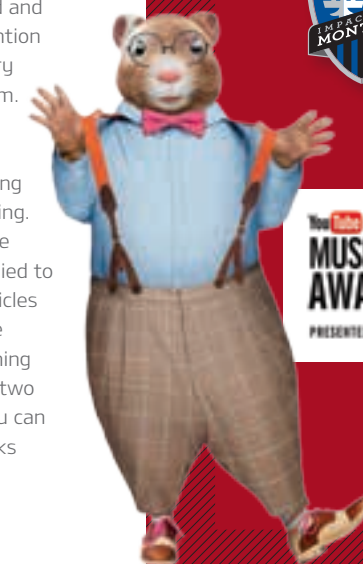


## MAJOR LEAGUE SOCCER 2015

Kia is a proud founding partner of all three Canadian MLS teams, sharing a true passion for the game!

## YOUTUBE MUSIC AWARDS PRESENTED BY KIA

Kia's relationship with the YouTube Music Awards builds on the special relationship between music and drivers. It is demonstrated by Kia partnering with numerous music events around the globe. It's just one more way that Kia stays in tune with the people who drive their vehicles.





# FEATURES AND SPECIFICATIONS

Exterior	L	LX	SX	SXL
17" steel wheels with covers	●	-	-	-
17" alloy wheels	-	●	-	-
18" machined-finish alloy wheels	-	-	●	-
19" bright chrome wheels	-	-	-	●
P235/65R17 LRR tires	●	●	-	-
P235/60R18 LRR tires	-	-	●	-
P235/55R19 LRR tires	-	-	-	●
Projection headlights	●	●	●	-
High Intensity Discharge (HID) Xenon headlights	-	-	-	●
Smart high beam system	-	-	-	+
Automatic headlights	-	●	●	●
LED positioning lights (bar-type)	-	●	●	-
LED positioning lights (bulb-type)	-	-	-	●
LED light bar taillights	-	-	●	●
Fog lights	-	-	●	-
Projection fog lights	-	-	-	●
Dual-panel power sunroof	-	-	-	●
Power, heated, body-coloured side mirrors with integrated turn signals	●	●	●	●
Power folding sideview mirrors	-	●	●	●
Variable intermittent front windshield wipers	●	●	●	●
Aeroblade wipers	-	-	●	●
Front windshield wiper de-icer	-	●	●	●
Intermittent rear wiper with washer	●	●	●	●
Solar glass	-	-	●	●
Privacy glass	●	●	●	●
Rear chrome garnish	●	●	●	●
Body-coloured door handles	●	●	-	-
Chrome door handles	-	-	●	●
Chrome window mouldings	-	-	●	●
Rear spoiler	●	●	●	●
Roof rails	-	●	●	●
Front and rear splash guards	●	●	●	●

Safety	L	LX	SX	SXL
Dual advanced front airbags	●	●	●	●
Dual front seat-mounted side impact airbags	●	●	●	●
Dual full-length side impact curtain airbags	●	●	●	●
Adjustable headrests for all rows	●	●	●	●
2 <sup>nd</sup> row aviation-style headrests	-	-	-	●
4-wheel anti-lock braking system (ABS)	●	●	●	●
Cornering brake control (CBC)	●	●	●	●
Electronic stability control (ESC)	●	●	●	●
Traction control system (TCS)	●	●	●	●
Vehicle stability management (VSM) <sup>1</sup>	-	-	●	●
Hill assist control (HAC)	●	●	●	●
Roll-over Prevention (ROP)	●	●	●	●
3-point seatbelts (all seating positions)	●	●	●	●
Front seatbelt pretensioners with force limiters	●	●	●	●
Height-adjustable seatbelt anchors (1 <sup>st</sup> & 2 <sup>nd</sup> rows)	●	●	●	●
Lower Anchors and Tethers for Children (LATCH) - 2 <sup>nd</sup> and 3 <sup>rd</sup> rows	●	●	●	●
Rear child-safety door locks	●	●	●	●
Impact sensing door unlock	●	●	●	●
Anti-theft ignition immobilizer	●	●	●	●
Side-impact door beams	●	●	●	●
Security alarm	●	●	●	●
Rearview camera <sup>1</sup>	-	●	●	●
360° camera monitoring system (4 cameras) <sup>1</sup>	-	-	-	+
Rear parking sonars <sup>1</sup>	-	●	●	●
Front parking sonars <sup>1</sup>	-	-	-	●
Blind-zone driver mirror	-	●	-	-
Blind spot detection system <sup>1</sup>	-	-	●	●
Lane departure warning system <sup>1</sup>	-	-	-	+
Rear cross-traffic alert <sup>1</sup>	-	-	●	●
Front collision warning system <sup>1</sup>	-	-	-	+

Seating & Trim	L	LX	SX	SXL
7-passenger seating	●	-	+	●
8-passenger seating (removable 2 <sup>nd</sup> row middle seat)	-	●	●	-
2 <sup>nd</sup> row 'Slide-n-Stow' side seats	●	●	●	-
2 <sup>nd</sup> row luxury captain's chairs with kick-out leg rests	-	-	-	●
Stain-resistant cloth seats (YES Essentials <sup>®</sup> ) <sup>2</sup>	●	●	●	-
Leather seats	-	-	+	-
Premium Nappa leather seats	-	-	-	●
Heated front seats	-	●	●	●
Heated 2 <sup>nd</sup> row seats (captain's chair cushions only)	-	-	●	-
Air-cooled front seats	-	-	-	●
Driver's seat height adjuster	●	●	●	●
3 <sup>rd</sup> row 60/40 split fold-in-floor seats	●	●	●	●
8-way power adjustable driver's seat	-	●	●	●
2-way power driver's seat lumbar support	-	●	-	-
4-way power driver's seat lumbar support	-	-	●	●
8-way power adjustable front passenger seat	-	+	●	●
Driver's seat memory function	-	-	+	●
Leather-wrapped steering wheel and gear shift knob	-	●	●	●
Leather-wrapped and wood steering wheel	-	-	-	●
Front centre armrest with storage	●	●	●	●
Metal grain front and 2 <sup>nd</sup> row door garnish	-	-	●	-
Dark wood grain front and 2 <sup>nd</sup> row door garnish	-	-	-	●

● = Standard - = Not available + = Plus package

Comfort & Convenience	L	LX	SX	SXL
Front and rear air conditioning	●	●	●	●
Rear air conditioning controls	●	●	●	●
Tri-zone automatic climate control	-	-	●	●
'Clean Air' climate ionizer	-	-	●	●
Auto de-fog system	-	-	●	●
AM/FM/CD/MP3/SIRIUSXM <sup>®</sup> stereo	●	●	●	●
4 speakers	●	-	-	-
6 speakers	-	●	●	●
8-speaker premium Infinity <sup>®</sup> 7 audio system (with external amplifier and subwoofer)	-	-	-	+
UVO <sup>™</sup> infotainment system <sup>5</sup>	-	●	●	●
Voice-activated navigation system with 8" multimedia interface <sup>4</sup>	-	-	-	+
AUX and USB ports	●	●	●	●
USB charging port	-	-	●	●
Bluetooth <sup>®</sup> hands-free cell phone connectivity <sup>6</sup>	-	●	●	●
Steering wheel-mounted audio controls	-	●	●	●
Steering wheel-mounted cruise control	●	●	●	●
Adaptive smart cruise control	-	-	-	+
OLED instrument cluster	-	+	-	-
Enhanced Supervision cluster	-	-	●	●
Trip computer	●	●	●	●
Power door locks	●	●	●	●
Central door lock (driver & passenger)	●	●	●	●
Remote keyless entry with panic function	●	●	●	●
Smart key with push-button start	-	+	●	●
Smart power liftgate	-	-	●	●
Power front and 2 <sup>nd</sup> row windows	●	●	●	●
Obstacle detecting driver window	●	●	-	-
Obstacle detecting windows (all)	-	-	●	●
2 <sup>nd</sup> & 3 <sup>rd</sup> row sunshade blinds	-	+	●	●
Dual power sliding doors	-	+	●	●
Satin chrome interior door handles	-	-	●	●
Drive mode select system (Comfort/Eco/Normal)	-	-	●	●
Tilt and telescopic steering wheel	●	●	●	●
Heated steering wheel	●	●	●	●
12V power outlets: centre fascia and luggage	●	-	●	●
Dual 115V inverters (household outlets - console and cargo area)	-	-	-	●
12 cupholders	●	●	●	●
Conversation mirror	●	●	●	●
Auto-dimming rearview mirror with HomeLink system	-	●	●	●
Illuminated vanity mirrors	●	●	●	●
Map, room & cargo lights	●	●	●	●
Illuminated glove box	-	-	●	●
Cooling glove box	-	●	●	●
Stainless steel door scuff plates	-	-	-	●
Portable cargo flashlight	-	-	●	●

Engine	
Type	3.3L, GDI, V6, all aluminum
Valve train	24-valve, DOHC, Dual-Cam Variable Valve Timing (D-CVVT)
Horsepower	276 hp @ 6,000 rpm
Torque	248 lb.-ft. @ 5,200 rpm
Compression ratio	11.5:1
Intake	Variable Intake System (VIS), Electronic Throttle Control (ETC)
Recommended Fuel	Regular unleaded
Fuel management	Gasoline Direct Injection (GDI), Active ECO
Transmission	6-speed automatic, Sportmatic sequential shifter

Dimensions, mm (in.)	
Wheelbase	3,060 (120.5)
Length	5,115 (201.4)
Width	1,985 (78.1)
Height with/without roof rails	1,755/1,740 (69.1/68.5)
Ground clearance	171 (6.7)
Head room - (front/middle/rear)	1,010/1,000/987 (39.8/39.4/38.9)
Head room - with sunroof (front/middle/rear)	984/951/930 (38.7/37.4/36.6)
Shoulder room - (front/middle/rear)	1,622/1,602/1,508 (63.9/63.1/59.4)
Leg room - (front/middle/rear)	1,040/1,045 (SXL: 1,030)/885 (40.9/41.1 (SXL: 40.6)/34.8)
Hip room - (front/middle/rear)	1,506/1,679 (SXL: 1,671)/1,269 (59.3/66.1 (SXL: 65.8)/49.7)
Turning diameter (curb to curb), m (ft.)	5.6 (18.4)

Brakes	
Type	4-wheel disc
ABS	4-wheel, 4-channel
Front, mm (in.)	320 (12.6) vented disc
Rear, mm (in.)	302 (11.9) solid disc

Body & Chassis	
Layout	Front engine, front wheel drive
Body type	High-tensile steel unibody
Front suspension	Independent, MacPherson struts, dynamic dampers, coil springs and anti-roll bar
Rear suspension	Independent, multi-link, dynamic dampers, coil springs and anti-roll bar
Steering	Hydraulic power steering (SX/SXL: Electric power steering) SX/SXL: Drive mode select (Comfort/Eco/Normal)

Curb Weight, kg (lb.)	
L	2,002 - 2,141 (4,414 - 4,720)
LX	2,026 - 2,113 (4,467 - 4,658)
SX	2,052 - 2,141 (4,524 - 4,720)
SXL	2,127 - 2,141 (4,689 - 4,720)

Capacities, L (cu. ft.)	
Interior volume	4,695 (165.8)
Cargo capacity (behind 1 <sup>st</sup> row)	4,022 (142.0)
Cargo capacity (behind 2 <sup>nd</sup> row)	2,220 (78.4)
Cargo capacity (behind 3 <sup>rd</sup> row)	960 (33.9)
Fuel tank capacity, L (Imp. gal.)	80 (17.6)

Fuel Economy, Highway/City, L/100km	
L/LX	9.7/13.2
SX	9.5/12.9
SXL	10.5/14.2



Starting with the 2015 model year, Natural Resources Canada in conjunction with the automotive manufacturers, have introduced a new testing procedure that will result in higher fuel consumption ratings that are more representative of everyday driving. Kia Canada is one of the first automotive manufacturers to implement the new testing practice and would like to ensure you fully understand the difference. The new procedure incorporates 3 additional test cycles that account for air conditioner usage, cold temperature operation, and higher speeds with more rapid acceleration and braking. To learn more, please visit: <http://oee.nrcan.gc.ca/fcr-rcf/public/index-e.cfm>

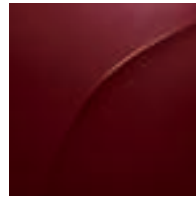


## EXTERIOR COLOURS

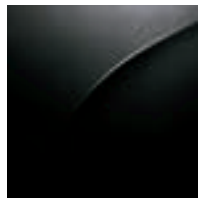
Sterling (M)  
GC/GL/CBL



Merlot (M)  
GC/GL/BBL



Aurora Black  
GC/GL/CBL



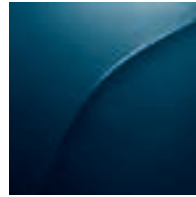
Graphite (M)  
GC/GL/BBL



Snow White Pearl (P)  
GC/GL/BBL



Midnight Sapphire (M)  
GC/GL/CBL



Titanium Brown (M)  
GC/GL/BBL

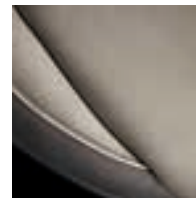


## INTERIOR COLOURS

Grey Cloth (GC)



Grey Leather (GL)



Nappa Leather Two-Tone  
Camel / Black (CBL)



Nappa Leather Two-Tone  
Burgundy / Grey (BBL)



## WHEELS

17" steel wheels  
with cover (L)



17" alloy wheels  
(LX, LX+)



18" machined-finish  
alloy wheels (SX, SX+)



19" chrome alloy wheels  
(SXL, SXL+)



M = Metallic, P = Pearl. The exterior and interior colours in this brochure are as close to the actual vehicle production colours as the printing process allows.

## ACCESSORIES

Trailer Hitch



Floor Liners



Wheel Locks



Kia Genuine Parts and Accessories are engineered by Kia and installed by professionals at your Kia dealer. For more information on the full line of available Genuine Kia Parts and Accessories, see your local Kia dealer, visit [www.kia.ca](http://www.kia.ca) or call 1-877-542-2886.

## Get the points.



Kia Member Rewards is an exclusive rewards program for Kia customers.

As a Kia Rewards Member, you'll earn points with every dollar you spend on maintenance service, parts and accessories at your servicing Kia dealer. Those Reward Points can be redeemed for discounts on future purchases – including the purchase of a new Kia. Plus earn Bonus Points on select items and services to collect rewards even faster.

Kia Member Rewards No-Charge Benefits include:

- Fuel fill-up with the delivery of your new Kia vehicle

Become a Kia Premium Rewards Member:

Ask your Kia Dealer how you can enjoy even more benefits.

Enroll Today:

Becoming a Kia Rewards Member is easy. See your Kia Dealer today to join. Visit [rewards.kia.ca](http://rewards.kia.ca) for full terms and conditions.

- Local shuttle service
- Multi-point vehicle inspection with every service visit
- Windshield washer fill-up with every paid service
- Windshield wiper installation with wiper purchase
- Preferential rates on car rentals, nationwide
- 24/7 Roadside Assistance for your vehicle under Kia's 5-year/100,000 km warranty or Certified Pre-Owned warranty
- Email notification of exclusive Kia specials and events – a great way to earn Reward Points and save on future purchases



## We've got you covered.

At Kia, we believe peace of mind should come standard with every vehicle we make. That's why we back every model with one of the best warranties in the industry.

Our outstanding warranty coverage includes:

5-year/100,000 km – Worry-free comprehensive warranty covering virtually the entire vehicle<sup>9</sup>

5-year/100,000 km – Powertrain warranty covering the engine, transmission, axles, differentials and driveshafts<sup>9</sup>


5-year/100,000 km – Roadside assistance covers you in case of mechanical breakdown anywhere in North America<sup>9</sup>

5-year/unlimited km – Anti-perforation warranty on body sheet metal defects in material/workmanship<sup>9</sup>

For more information visit [kia.ca](http://kia.ca) or call 1-877-542-2886

1. Blind-spot detection, Front collision warning system, 360° camera monitoring system, Adaptive smart cruise control, Lane-change assist, Lane departure warning system, Rear cross-traffic alert, Vehicle stability management, front and rear parking sonars and rearview camera are not substitutes for proper and safe driving procedures. 2. When properly equipped. Do not exceed any weight ratings and follow all towing instructions in your Owner's Manual. 3. YES Essentials® is a registered trademark of SAGE Automotive Interiors Inc. 4. When equipped with the navigation system. French voice commands may be limited. 5. Microsoft® is a registered trademark of Microsoft Corporation in Canada and/or other countries. Failure to pay attention to travel conditions and vehicle operation while the vehicle is in motion could result in loss of vehicle control. Operate the UVO system, even with voice commands, only when it is safe to do so. 6. The Bluetooth® word mark and logos are registered trademarks owned by Bluetooth SIG, Inc. A compatible Bluetooth wireless technology-enabled cell phone is required to use Bluetooth hands-free wireless technology. 7. Infinity® is a registered trademark of Harman International Industries, Incorporated. 8. Service available in the 10 provinces and three territories of Canada, and the 48 contiguous states of the U.S. Monthly subscription sold separately after three trial months. 9. The Kia 5-year/100,000-km warranty includes various warranties and roadside assistance. Some restrictions apply. For more information call us at 1-877-542-2886 or visit to [kia.ca](http://kia.ca). 10. Not available on SXL trims. 11. Kia Sportage received the lowest number of problems per 100 vehicles among small SUVs in a tie in the proprietary J.D. Power 2014 U.S. Initial Quality Study<sup>SM</sup>. Kia Cadenza received the lowest number of problems per 100 vehicles among large cars in the proprietary J.D. Power 2014 U.S. Initial Quality Study<sup>SM</sup>. The 2014 study is based on responses from 86,118 new-vehicle owners, measuring 239 models and opinions after 90 days of ownership. Proprietary study results are based on experiences and perceptions of owners surveyed in February-May 2014. Your experiences may vary. Visit [jdpower.com](http://jdpower.com)



 [facebook.com/kiacanada](https://facebook.com/kiacanada)

 [twitter.com/kiacanada](https://twitter.com/kiacanada)

 [youtube.com/kiacanada](https://youtube.com/kiacanada)

[kia.ca](https://kia.ca)



The Power to Surprise

## SEDONA

All information contained herein was accurate and correct at the time of printing. Kia Canada Inc. reserves the right to make changes at any time without notice, and without any obligations as to colours, materials, specifications, features, accessories, packages, models and any applicable programs. Some vehicles shown may include optional equipment or may not be exactly as shown. Kia Canada Inc., by the publication and dissemination of this material, does not create any warranties, either expressed or implied, to any Kia products. See your Kia dealer or website for further details. Reproduction of the contents of this material without the expressed written approval of Kia Canada Inc. is prohibited. © Copyright 2015 Kia Canada Inc. Printed in Canada, April 2015.