



**THE PERFECT BALANCE OF
EVERYTHING THAT MATTERS**

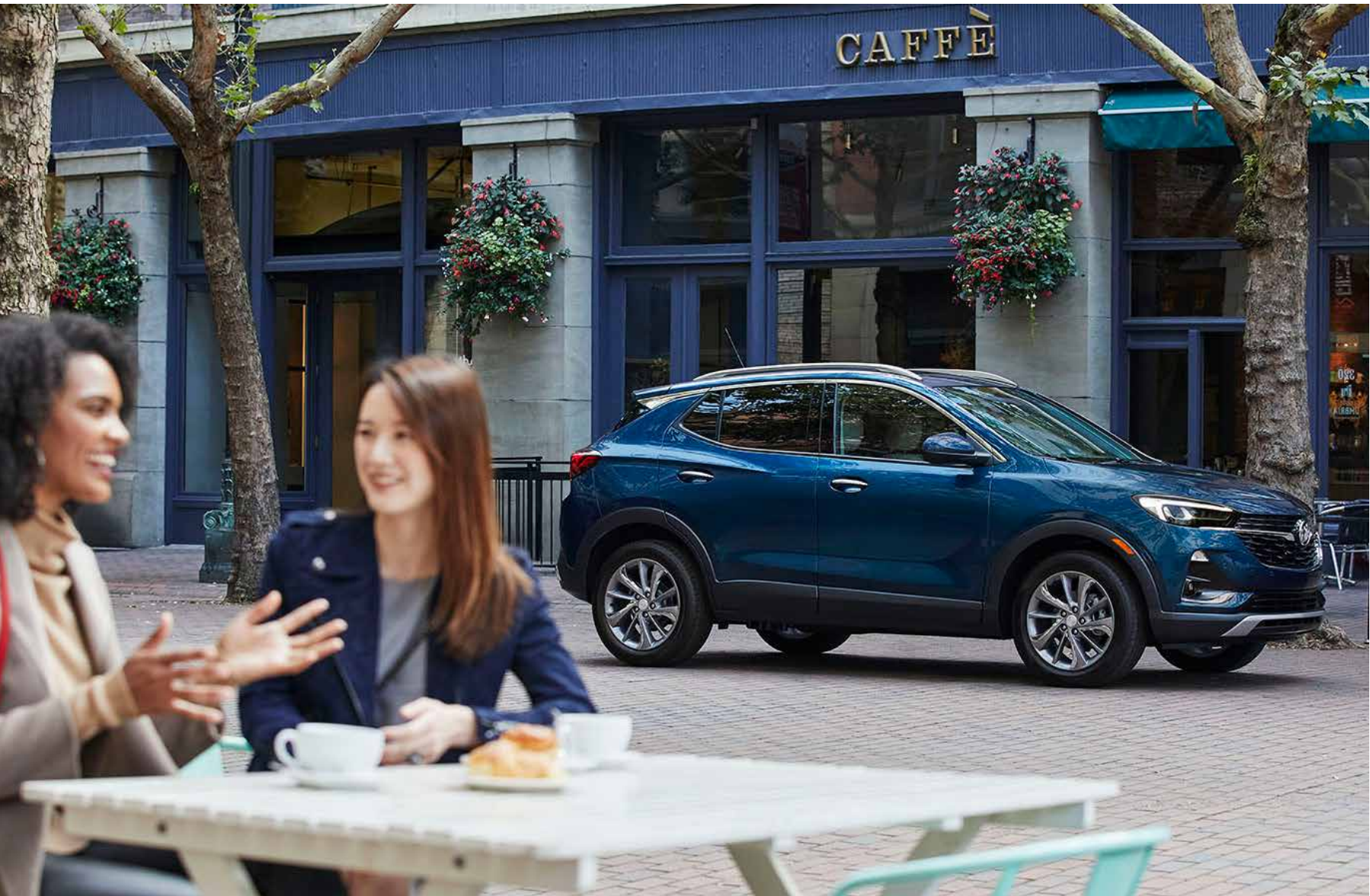
Buick invites you to experience our lineup of innovative vehicles, each designed to enhance your life from the very first drive. We've styled exteriors with sleek, modern lines. We've filled interiors with inviting, premium materials.

Plus, we've engineered each vehicle with surprising roominess, power and technology so you can make more of every day.





Every Buick is designed to give you and your family everything you need, and everything you want. The result: vehicles that excite and indulge you, that entertain and connect you, and that, quite simply, get you.



Encore GX Essence shown in Deep Azure Metallic (additional charge; premium paint) with the available Experience Buick Package and available features.

FIRST-EVER ENCORE GX

INTRODUCING THE FIRST-EVER BUICK ENCORE GX

Smart doesn't just happen. It's designed. That's why you'll find every detail in the Encore GX cleverly fits the way your life moves. From a turbocharged engine with available All-Wheel Drive to a roomy interior to cargo space with highly versatile configurations, everything is geared for go-getters.

The Encore GX strikes a distinctively athletic tone thanks to its crisp body lines and streamlined stance. Opt for the Sport Touring Package and you'll get exclusive features including a high-gloss black grille with eye-catching red details and 18" aluminum wheels with contrasting high-gloss inserts. You can also add the unmistakably exclusive look of an available Black Roof Package.

Plus, since smart features can help you enjoy your travels, the Encore GX comes standard with Buick Driver Confidence—a suite of advanced safety features.



Arriving spring 2020. Model shown with available dealer-installed roof rack accessories.



U.S. model shown. Encore GX Essence interior shown in Whisper Beige with Ebony accents and available features.



FIRST-EVER ENCORE GX

THE SMART MOVE FOR MOVING SMARTER

Inside the First-Ever Encore GX, you'll find a refined interior that offers roomy seating for five and tech-savvy amenities for all. Premium available features like a heated, leather-wrapped steering wheel, leather-appointed seats and a panoramic moonroof are designed to work together beautifully.

Thoughtful design also takes your connected Encore GX to the next level. Stay seamlessly in sync with Apple CarPlay^{®1} compatibility for the iPhone^{®2} and the latest Buick Infotainment System.³ Plus, with the available myBuick[®] mobile app⁴ on your Apple Watch^{®2} or smartphone and the available Remote Access Plan,⁵ you can remotely start or stop your engine and lock and unlock your properly equipped vehicle.

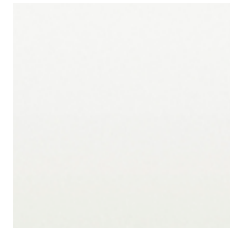
¹Vehicle user interface is a product of Apple[®] and its terms and privacy statements apply. Requires compatible iPhone[®] and data plan rates apply. Apple CarPlay is a trademark of Apple, Inc. Siri, iPhone and iTunes are trademarks of Apple, Inc., registered in the U.S. and other countries. ²Apple and the Apple logo are trademarks of Apple, Inc., registered in the U.S. and other countries. App Store is a service mark of Apple, Inc., registered in the U.S. and other countries. ³Functionality may vary by model. Full functionality requires compatible Bluetooth[®] and smartphone, and USB connectivity for some devices. Data plan rates may apply. ⁴Available on select Apple[®] and Android[™] devices. Service availability, features and functionality are subject to limitations and vary by model and/or vehicle configuration, device and the plan in which you are enrolled. Device data connection required. Visit onstar.ca for more details. ⁵Diagnostic capabilities vary by model and/or vehicle configuration and do not cover all vehicle conditions; requires email address on file and enrolment in Vehicle Diagnostics to receive alerts; additional message and data rates may apply. Tire Pressure Monitoring System required (excludes spare). Does not include emergency or security services. Vehicle Locate is designed to locate compatible connected vehicles and capabilities vary by model and/or vehicle configuration and mobile device; available in the U.S., Canada and Mexico only. Remote Key Fob enables services such as remote start (requires GM factory-installed and enabled remotestart system), door lock/unlock (requires automatic locks) as well as lights and horn activation. Send-to-Vehicle Navigation requires a GM factory-installed navigation system to send directions to the vehicle. Alexa[™] and Google Assistant[™] are only available in the U.S. and Canada in U.S. English on properly equipped vehicles; some commands are not supported on some vehicles. Services are subject to user terms and limitations. Visit onstar.ca for more details.



ENCORE GX



EXTERIOR COLOURS



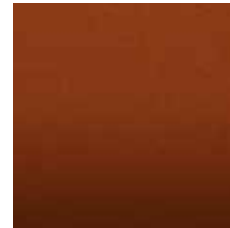
Summit White¹



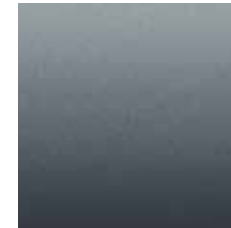
White Frost Tricoat^{2,3}



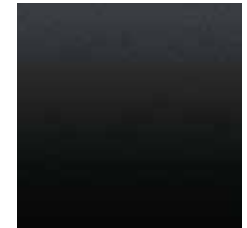
Chili Red Metallic^{2,3}



Burnished Bronze Metallic^{1,2}



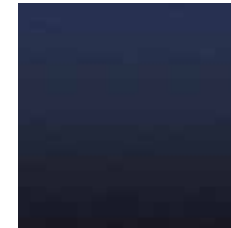
Satin Steel Metallic^{2,3}



Ebony Twilight Metallic²



Black Currant Metallic^{1,2}



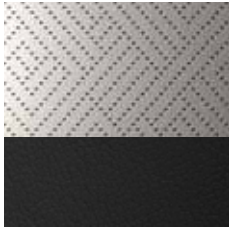
Dark Moon Blue Metallic²



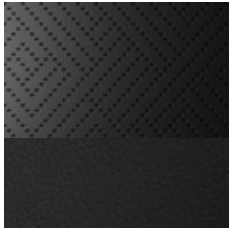
Deep Azure Metallic^{1,2}

¹Not available with Sport Touring Package. ²Additional charge; premium paint.
³Available with Black Roof Package.

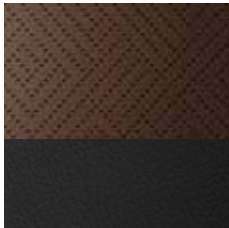
INTERIOR COLOURS



Whisper Beige Seats With Ebony Interior Accents⁴



Ebony Seats With Ebony Interior Accents⁴



Signet Seats With Ebony Interior Accents⁵



U.S. model shown.

WHEELS

18" Bright Silver Painted Aluminum
Standard on Preferred.



18" Aluminum, Medium Android High-Gloss With Chrome Inserts

Included and only available with Experience Buick Package.



18" Machined Aluminum With High-Gloss Dark Android Pockets

Standard on Select and Essence.



18" Aluminum, Medium Android High-Gloss With Dark Android High-Gloss Inserts

Included and only available with Sport Touring Package.



⁴Cloth with leatherette (available on Preferred and Select) or leather-appointed (available on Essence).

⁵Leather-appointed (available on Essence trim).

ENCORE GX

FEATURES

	● STANDARD	○ AVAILABLE	— NOT AVAILABLE	PREFERRED	SELECT	ESSENCE
FRONT-WHEEL DRIVE	●		—	●	—	—
ALL-WHEEL DRIVE		○		○	●	●
1.2L TURBO ENGINE	●		—	●	—	—
1.3L TURBO ENGINE		○		○	●	●
KEYLESS START, PUSH-BUTTON	●			●	●	●
AIR CONDITIONING, SEMIAUTOMATIC WITH ELECTRONIC CONTROLS	●		—	●	—	—
AIR CONDITIONING, DUAL-ZONE AUTOMATIC CLIMATE CONTROL WITH INDIVIDUAL CLIMATE SETTINGS FOR DRIVER AND FRONT PASSENGER			—	—	●	●
IN-VEHICLE AIR IONIZER			—	—	—	●
APPLE CARPLAY ^{®1} COMPATIBILITY/ANDROID AUTO ^{™2} COMPATIBILITY	●			●	●	●
BUICK INFOTAINMENT SYSTEM ³ WITH NAVIGATION ⁴			—	—	○	○
BOSE ⁵ PREMIUM 7-SPEAKER SYSTEM WITH AMPLIFIER AND HD RADIO			—	—	—	○
LANE CHANGE ALERT WITH SIDE BLIND ZONE ALERT ⁶		○		○	●	●
REAR CAMERA MIRROR ⁶			—	—	—	○
PANORAMIC MOONROOF		○		○	○	○
ONSTAR [®] AND BUICK CONNECTED SERVICES CAPABLE ⁷	●			●	●	●
4G LTE WI-FI [®] HOTSPOT CAPABLE	●			●	●	●
HEAD-UP DISPLAY			—	—	—	○
REAR CROSS TRAFFIC ALERT ⁶		○		○	●	●
AUTOMATIC PARKING ASSIST WITH BRAKING ⁶			—	—	—	○
REMOTE VEHICLE STARTER SYSTEM	●			●	●	●
HEATED DRIVER AND FRONT-PASSENGER SEATS	●			●	●	●
TEEN DRIVER	●			●	●	●
WIRELESS SMARTPHONE CHARGING ⁸			—	—	—	○
HANDS-FREE POWER LIFTGATE		○		○	●	●
HALOGEN HEADLAMPS AND TAIL LAMPS	●			●	●	—
LED HEADLAMPS AND TAIL LAMPS			—	—	—	●
OUTSIDE MIRRORS, HEATED POWER-ADJUSTABLE, BODY-COLOUR, MANUAL-FOLDING	●			●	●	●
18" ALUMINUM WHEELS	●			●	●	●
BUICK DRIVER CONFIDENCE ⁶ INCLUDES AUTOMATIC EMERGENCY BRAKING, FRONT PEDESTRIAN BRAKING, FORWARD COLLISION ALERT, FOLLOWING DISTANCE INDICATOR, LANE KEEP ASSIST WITH LANE DEPARTURE WARNING ⁶ AND INTELLIBEAM HEADLAMPS	●			●	●	●

PACKAGES

		PREFERRED	SELECT	ESSENCE
● STANDARD ○ AVAILABLE – NOT AVAILABLE				
Sport Touring Package	Includes body-colour rocker mouldings, bodyside body-colour mouldings, custom grille, 18" Medium Android high-gloss wheels with Dark Android high-gloss inserts, front and rear red bumper protective mouldings, front and rear sport bumper and Sport Touring badge	○	○	○
Experience Buick Package	Includes power moonroof, 8" diagonal Buick Infotainment System ³ with Navigation, ⁴ HD Rear Vision Camera ⁶ and 18" Medium Android high-gloss wheels with chrome inserts (Replaced with Sport Touring-exclusive wheels on Sport Touring Package)	—	○	○
Black Roof Package	Includes black roof rails, black exterior mirror caps and black roof panel (Requires Sport Touring Package and choice of exterior colour Chili Red Metallic, White Frost Tricoat or Satin Steel Metallic)	○	○	○
Advanced Technology Package	Includes 8" diagonal Buick Infotainment System ³ with Navigation, ⁴ Adaptive Cruise Control–Camera ⁴ , Rear Park Assist ⁶ , HD Surround Vision ⁶ and Head-Up Display (Requires hands-free power liftgate)	—	○	○
Safety Package ⁶	Includes Rear Park Assist, Rear Cross Traffic Alert and Lane Change Alert with Side Blind Zone Alert (Not available with Sport Touring Package)	○	●	●
Convenience Package	Includes Automatic Parking Assist with Braking ⁶ , Rear Camera Mirror ⁶ , Rear Camera Mirror Washer, wireless smartphone charging ⁸ and Rainsense wipers	—	—	○
Cold Weather Comfort Package	Includes driver 8-way power seat adjuster, remote vehicle starter system, heated driver and front-passenger seats and SiriusXM [®] Radio ⁹	●	●	●

SPECIFICATIONS

DIMENSIONS MM (INCHES)		CAPACITIES	
Wheelbase	2596 (102.2)	Standard engine with Front-Wheel Drive	Standard engine with All-Wheel Drive
Overall length	4354 (171.4)	Engine Type	1.2L Turbo 1.3L Turbo
Overall height with luggage rack	1628 (64.1)	Horsepower	137 hp @ 5000 rpm 155 hp @ 5600 rpm
Overall width	1814 (71.4)	Torque	162 lb.-ft. of torque @ 2500 rpm 174 lb.-ft. @ 1600 rpm
Headroom first/second row without moonroof	1008/968 (39.7/38.1)	Estimated Fuel Consumption, L/100 km ¹⁰	9.0 city/7.7 hwy FWD 9.0 city/8.0 hwy AWD
Shoulder room, front/rear	1407/1361 (55.4/53.6)	Fuel Tank, L (approx.)	50 litres 50 litres
Hip room, front/rear	1318/1206 (51.9/47.5)	Max Cargo Capacity, L (cu. ft.) ¹¹	With seats up: 665.5 (23.5) Seats down: 1421.7 (50.2) With seats up: 665.5 (23.5) Seats down: 1421.7 (50.2)
Legroom, front/rear	1039/914 (40.9/36.0)		

¹Vehicle user interface is a product of Apple[®] and its terms and privacy statements apply. Requires compatible iPhone[®] and data plan rates apply. Apple CarPlay is a trademark of Apple, Inc. Siri, iPhone and iTunes are trademarks of Apple, Inc., registered in the U.S. and other countries. ²Vehicle user interface is a product of Google[™] and its terms and privacy statements apply. Requires the Android Auto app on Google Play and an Android-compatible smartphone running Android 5.0 or higher. Data plan rates apply. Android Auto is a trademark of Google LLC. ³Functionality may vary by model. Full functionality requires compatible Bluetooth and smartphone, and USB connectivity for some devices. Data plan rates may apply. ⁴At time of printing, detailed map coverage is available for most major urban areas of the United States and for certain metropolitan areas of Canada (Vancouver, Calgary, Edmonton, Winnipeg, Windsor, London, Toronto, Ottawa, Montreal, Quebec City and Halifax). Coverage is significantly limited outside these areas. ⁵Bose is a registered trademark of Bose Corporation. ⁶Read the vehicle Owner's Manual for important feature limitations and information. ⁷Connected vehicle services require a connected vehicle services plan or trial, connected hardware, vehicle electrical system (including battery), wireless service and GPS satellite signal to be available and operating for features to function properly. OnStar acts as a link to existing emergency service providers. Visit onstar.ca for coverage map, details and system limitations. ⁸The system wirelessly charges one compatible mobile device. Some phones have built-in wireless charging technology and others require a special adapter/back cover. To check for phone or other device compatibility, see my.buick.ca/learn or consult your carrier. ⁹Available in 10 Canadian provinces, three territories and the 48 contiguous United States. Subscription sold separately after trial period. If you decide to continue your service at the end of your trial subscription, the plan you choose will automatically renew and bill at then-current rates until you call 1-888-539-7474 to cancel. Other fees and taxes will apply. All fees and programming subject to change. See the Customer Agreement for complete terms at siriusxm.ca/terms. ©2020 SiriusXM Canada, Inc. "SiriusXM," the SiriusXM logo, channel names and logos are trademarks of SiriusXM Radio, Inc., and are used under licence. SiriusXM Canada products, programming and services are subject to change. ¹⁰Fuel-consumption estimates based on GM testing in accordance with Government of Canada approved test methods. Refer to vehicles.nrcan.gc.ca for details. Your actual fuel consumption will vary. ¹¹Cargo and load capacity limited by weight and distribution. Cargo floor must be in lowest position.



ENCORE

CARVE YOUR OWN PATH

From weekday commutes to weekend adventures, the 2020 Encore stands out in all the right ways. Buick's signature winged grille and LED daytime running lamps elevate the sculptural details. Available All-Wheel Drive optimizes traction to make the most of Encore's nimble manoeuvrability. Add turbocharged performance and the confident handling of StabiliTrak, and you have everything needed to carve a path with style and substance.

Production of Essence and Sport Touring models has ended. Models shown throughout may not be available. See dealer for details.





Encore Essence shown in Ebony Twilight Metallic (additional charge; premium paint) with available features.



ENCORE

ADD STYLE TO YOUR EVERY MOVE

Inside, Encore continues to impress as an all-around performer. Settle into the available heated driver and front-passenger seats and discover modern amenities like an 8" diagonal colour touch-screen, smartphone compatibility and an available built-in 4G LTE Wi-Fi® Hotspot.¹ With a press of a button, the available power moonroof floods the cabin with light. The fold-flat front-passenger seat and 60/40 split rear seats easily adapt to carry various combinations of passengers and cargo. Throughout Encore's cabin, you'll find it's big on style—even in its smallest details.



¹Visit onstar.ca for vehicle availability, coverage maps, details and system limitations. Services and connectivity vary by model and/or vehicle configuration and conditions, as well as geographical and technical restrictions. 4G LTE service available in select markets. Requires active connected vehicle services and a data plan to access the vehicle's built-in Wi-Fi® Hotspot. Accessory Power must be active to use the Wi-Fi® Hotspot. Data plans provided by AT&T® or its local service provider. Credit card is required for purchase.

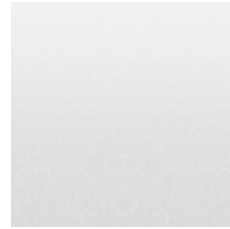


Encore Essence interior shown in Shale with available features.

ENCORE



EXTERIOR COLOURS



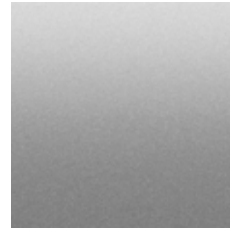
Summit White



White Frost Tricoat¹



Winterberry Red Metallic^{1,2}



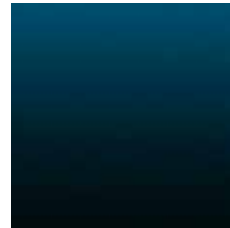
Quicksilver Metallic²



Satin Steel Metallic^{1,2}



Ebony Twilight Metallic^{1,2}



Deep Azure Metallic^{1,2}

¹Additional charge; premium paint. ²Production of this exterior colour has ended. See dealer for details.

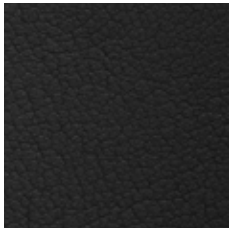
INTERIOR COLOURS



Shale Cloth With Leatherette³ or Leather-Appointed Seating⁴



Brandy Leather-Appointed Seating^{4,5}



Ebony Cloth With Leatherette³ or Leather-Appointed Seating⁴



U.S. model shown.

³Available on Preferred and Sport Touring.

⁴Available on Essence.

⁵Not available with Quicksilver Metallic or Winterberry Red Metallic exterior colours.

WHEELS

18" 10-Spoke Aluminum With Light Argent Finish

Standard on Preferred.



18" Midnight Silver Aluminum Alloy

Exclusive to Sport Touring.



18" 10-Spoke Aluminum With Technical Grey Finish

Exclusive to Essence.



18" 7-Spoke Chromed Aluminum⁶

Available on Essence.



⁶Included and only available with Experience Buick Package.

ENCORE

FEATURES

		SPORT TOURING (Production has ended)	ESSENCE (Production has ended)
● STANDARD ○ AVAILABLE – NOT AVAILABLE	PREFERRED		
1.4L TURBO ENGINE WITH VARIABLE VALVE TIMING (VVT) AND DOHC	●	●	●
60/40 SPLIT-FOLDING REAR SEAT	●	●	●
10 AIRBAGS ¹	●	●	●
KEYLESS OPEN AND START	●	●	●
APPLE CARPLAY ^{®2} COMPATIBILITY	●	●	●
ANDROID AUTO ^{™3} COMPATIBILITY	●	●	●
BUICK INFOTAINMENT SYSTEM ⁴ WITH 8" DIAGONAL TOUCH-SCREEN	●	●	●
3 MONTHS OF SIRIUSXM ^{®5} SUBSCRIPTION	●	●	●
QUIETTUNING [™] TECHNOLOGY WITH ACTIVE NOISE CANCELLATION	●	●	●
STABILITRAK STABILITY CONTROL SYSTEM	●	●	●
BUILT-IN WI-FI [®] HOTSPOT ⁶ (Includes data trial for 1 month or 3 GB, whichever comes first)	●	●	●
CARGO SHADE	●	●	●
SIDE BLIND ZONE ALERT ⁷	●	●	●
REAR CROSS TRAFFIC ALERT ⁷	○ ⁸	○ ⁸	●
ALL-WHEEL DRIVE	○	○	○
POWER MOONROOF	○	○	○ ⁹

PACKAGES

Safety Package ⁷ (Available on Preferred and Sport Touring, standard on Essence)	Includes Side Blind Zone Alert, Rear Cross Traffic Alert and 120-volt power outlet located at the rear of the centre console
Safety Package II ⁷ (Available on Essence)	Includes Front and Rear Park Assist, Forward Collision Alert, Lane Departure Warning, in-vehicle air ionizer and Rainsense wipers
Experience Buick Package (Available on Essence)	Includes easy-to-use Buick Infotainment System ⁴ with Navigation, ¹⁰ power moonroof and 18" 7-spoke chromed aluminum wheels

SPECIFICATIONS

DIMENSIONS MM (INCHES)		CAPACITIES	
Wheelbase	2555 (100.6)	Engine Type	1.4L Turbo with VVT
Overall length	4278 (168.4)	Horsepower	138 @ 4900 rpm
Overall height with luggage rack	1658 (65.3)	Torque	148 lb.-ft. @ 1850 rpm
Headroom first/second row without moonroof	1005 (39.6)/985 (38.8)	Estimated Fuel Consumption, L/100 km ¹¹	9.4 city/7.8 hwy (FWD); 10.0 city/8.0 hwy (AWD)
Shoulder room, front/rear	1376 (54.2)/1335 (52.6)	Fuel Tank, L (approx.)	53 litres
Hip room, front/rear	1312 (51.7)/1272 (50.1)	Max Cargo Capacity, L (cu. ft.) ¹²	1370.7 (48.4) behind first-row seats with second-row seats folded 532.4 (18.8) behind second-row seats
Legroom, first/second row	1037 (40.8)/908 (35.8)		

¹A NOTE ON CHILD SAFETY: Always use seat belts and the correct child restraint for your child's age and size, even with airbags. Even in vehicles equipped with the Passenger Sensing System, children are safer when properly secured in a rear seat in the appropriate infant, child or booster seat. Never place a rear-facing infant restraint in the front seat of any vehicle equipped with an active frontal airbag. See your vehicle Owner's Manual and child safety seat instructions for more safety information. ²Vehicle user interface is a product of Apple® and its terms and privacy statements apply. Requires compatible iPhone® and data plan rates apply. Apple CarPlay is a trademark of Apple, Inc. Siri, iPhone and iTunes are trademarks of Apple, Inc., registered in the U.S. and other countries. ³Vehicle user interface is a product of Google™ and its terms and privacy statements apply. Requires the Android Auto app on Google Play and an Android™-compatible smartphone running Android 5.0 or higher. Data plan rates apply. Android Auto is a trademark of Google LLC. ⁴Functionality may vary by model. Full functionality requires compatible Bluetooth® and smartphone, and USB connectivity for some devices. Data plan rates may apply. ⁵Available in 10 Canadian provinces, three territories and the 48 contiguous United States. Subscription sold separately after trial period. If you decide to continue your service at the end of your trial subscription, the plan you choose will automatically renew and bill at then-current rates until you call 1-888-539-7474 to cancel. Other fees and taxes will apply. All fees and programming subject to change. See the Customer Agreement for complete terms at siriusxm.ca/terms. ©2020 SiriusXM Canada, Inc. "SiriusXM," the SiriusXM logo, channel names and logos are trademarks of SiriusXM Radio, Inc., and are used under licence. SiriusXM Canada products, programming and services are subject to change. ⁶Visit onstar.ca for vehicle availability, coverage maps, details and system limitations. Services and connectivity vary by model and conditions, as well as geographical and technical restrictions. 4G LTE service available in select markets. Requires active connected vehicle services and a data plan to access the vehicle's built-in Wi-Fi® Hotspot. Accessory Power must be active to use the Wi-Fi® Hotspot. Data plans provided by AT&T or its local service provider. Credit card is required for purchase. Factory-installed equipment purchase may be required. ⁷Read the vehicle Owner's Manual for important feature limitations and information. ⁸Requires available Safety Package. ⁹Requires available Experience Buick Package. ¹⁰At time of printing, detailed map coverage is available for most major urban areas of the United States and for certain metropolitan areas of Canada (Vancouver, Calgary, Edmonton, Winnipeg, Windsor, London, Toronto, Ottawa, Montreal, Quebec City and Halifax). Coverage is significantly limited outside these areas. ¹¹Fuel-consumption estimates based on GM testing in accordance with Government of Canada approved test methods. Refer to vehicles.nrcan.gc.ca for details. Your actual fuel consumption will vary. ¹²Cargo and load capacity limited by weight and distribution.



ENVISION

THOUGHTFULLY DESIGNED, EXCEPTIONALLY REFINED

Style, performance and an uncommon degree of refinement. That's what you can expect from the 2020 Envision. But what this SUV's really about is exceeding expectations. For a vehicle that comfortably seats five, Envision can make you feel like you're driving a performance sedan. That's thanks to the spirited response of Envision's available 252-horsepower 2.0L Turbo engine, matched to intelligent All-Wheel Drive with active twin clutch.



Envision Premium II shown in Satin Steel Metallic (additional charge; premium paint) with available features.



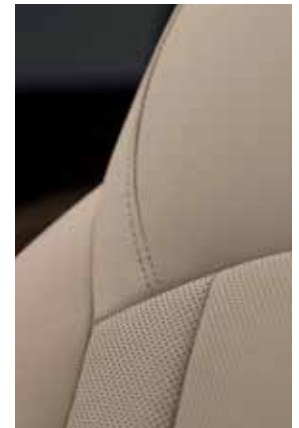
Envision Premium II interior shown in Dark Galvanized with Ebony accents and available features.

ENVISION

A DESTINATION IN ITSELF

No matter the temperature outside, life inside the Envision is more enjoyable with heated and available cooled front seats and an available heated, leather-wrapped steering wheel. Other thoughtful features anticipate your needs and create a personal sanctuary. Like the available in-vehicle air ionizer that helps keep cabin air fresher and an available Head-Up Display that projects critical information onto the windshield. QuietTuning™ technology with Active Noise Cancellation allows you to better enjoy conversations with passengers, listen to the available Bose¹ premium audio system or even have some quiet time to yourself.

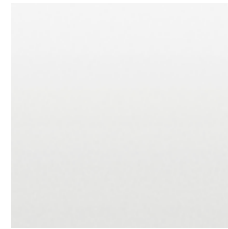
¹Bose is a registered trademark of Bose Corporation.



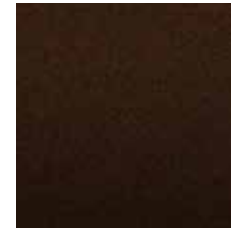
ENVISION



EXTERIOR COLOURS



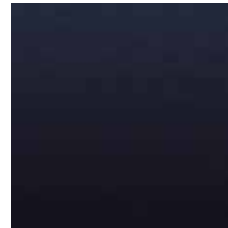
Summit White



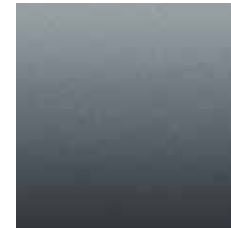
Espresso Metallic¹



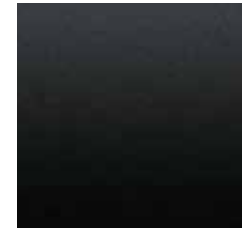
Chili Red Metallic¹



Dark Moon Blue Metallic¹



Satin Steel Metallic¹



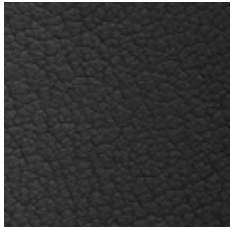
Ebony Twilight Metallic¹

¹Additional charge; premium paint.

INTERIOR COLOURS



Light Neutral Cloth² or Perforated Leather-Appointed Seating³



Ebony Perforated Leather-Appointed Seating³



Dark Galvanized Perforated Leather-Appointed Seating^{3,4}

Ebony accents included with all interior colours.

²Standard on Preferred trim level.

³Not available on Preferred trim level.

⁴Not available with Chili Red Metallic or Espresso Metallic exterior colours.



WHEELS

19" 12-Spoke Aluminum With Manooagian Silver Finish
Standard on Premium and Premium II.



19" 10-Spoke Aluminum, Bright Machine-Faced With Midnight Silver Painted Finish
Dealer-installed accessory wheel⁵



18" 10-Spoke Aluminum With Blade Silver Painted Finish
Standard on Preferred.



18" 10-Spoke Aluminum With Polished Finish
Standard on Essence.



⁵Use only GM-approved tire and wheel combinations. See buick.ca/accessories for important tire and wheel information, or see your dealer.

ENVISION

FEATURES

	● STANDARD	○ AVAILABLE	— NOT AVAILABLE	PREFERRED	ESSENCE	PREMIUM	PREMIUM II
HANDS-FREE POWER LIFTGATE	●			●	●	●	●
HEATED FRONT SEATS	●			●	●	●	●
APPLE CARPLAY ^{®1} COMPATIBILITY	●			●	●	●	●
ANDROID AUTO ^{™2} COMPATIBILITY	●			●	●	●	●
BUILT-IN 4G LTE WI-FI [®] HOTSPOT ³ (Includes data trial for 1 month from trial activation date or 3 GB, whichever comes first)	●			●	●	●	●
REAR VISION CAMERA ⁴	●			●	●	●	●
REAR PARK ASSIST ⁴	●			●	●	●	●
PANORAMIC MOONROOF		○			○	○	○
HEATED STEERING WHEEL			—		●	●	●
PERFORATED, LEATHER-APPOINTED SEATS			—		●	●	●
HEATED REAR OUTBOARD SEATS			—		●	●	●
TRI-ZONE CLIMATE CONTROL			—		●	●	●
LANE CHANGE ALERT WITH SIDE BLIND ZONE ALERT ⁴			—		●	●	●
REAR CROSS TRAFFIC ALERT ⁴			—		●	●	●
BUICK INFOTAINMENT SYSTEM ⁵ WITH 8" DIAGONAL COLOUR TOUCH-SCREEN AND NAVIGATION ⁵			—		○	○	●
IN-VEHICLE AIR IONIZER			—		—	●	●
SAFETY ALERT SEAT ⁴			—		—	●	●
LANE KEEP ASSIST WITH LANE DEPARTURE WARNING ⁴			—		—	●	●
FORWARD COLLISION ALERT ⁴			—		—	●	●
8" DIAGONAL MULTICOLOUR DRIVER INFORMATION CENTRE			—		—	●	●
BOSE ⁷ PREMIUM AUDIO 7-SPEAKER SYSTEM WITH AMPLIFIER			—		—	●	●
LED HEADLAMPS			—		—	●	●
INTELLIGENT ALL-WHEEL DRIVE WITH ACTIVE TWIN CLUTCH			—		—	●	●
ALL-WHEEL DRIVE	●			●	●	—	—
WIRELESS SMARTPHONE CHARGING ⁸			—		—	—	●
COOLED FRONT SEATS			—		—	—	●
AUTOMATIC PARKING ASSIST ⁴ (Includes Front and Rear Park Assist)			—		—	—	●
HEAD-UP DISPLAY			—		—	—	●

PACKAGES

Driver Confidence Package ⁴ (Available on Premium II)	Includes Adaptive Cruise Control–Advanced, Surround Vision and Enhanced Automatic Emergency Braking
--	---

SPECIFICATIONS

DIMENSIONS MM (INCHES)		CAPACITIES	
Wheelbase	2751 (108.3)		
Overall length	4666 (183.7)		
Body width	1839 (72.4)		
Overall height	1697 (66.8)		
Track width, front/rear	1575/1575 (62.0/62.0)		
Headroom, front/rear	1016/978 (40.0/38.5)		
Shoulder room, front/rear	1448/1417 (57.0/55.8)		
Hip room, front/rear	1382/1349 (54.4/53.1)		
Legroom, front/rear	1039/952 (40.9/37.5)		
		Standard engine on Preferred and Essence	Standard engine on Premium and Premium II
Engine Type		2.5L DOHC SIDI with VVT	2.0L Turbo DOHC SIDI with VVT
Horsepower		197 @ 6300 rpm	252 @ 5500 rpm
Torque		192 lb.-ft. @ 4400 rpm	295 lb.-ft. @ 3000 rpm
Estimated Fuel Consumption L/100 km (mpg) ⁹		11.1 (25) city/8.6 (33) hwy AWD	11.7 (24) city/9.4 (30) hwy AWD
Fuel Tank, L (approx.)		65.5 liters	65.5 liters
Max Cargo Capacity, L (cu. ft.) ¹⁰		With seats up: 761.8 (26.9) Seats down: 1622.7 (57.3)	With seats up: 761.8 (26.9) Seats down: 1622.7 (57.3)

¹Vehicle user interface is a product of Apple® and its terms and privacy statements apply. Requires compatible iPhone® and data plan rates apply. Apple CarPlay is a trademark of Apple, Inc. Siri, iPhone and iTunes are trademarks of Apple, Inc., registered in the U.S. and other countries. ²Vehicle user interface is a product of Google™ and its terms and privacy statements apply. Requires compatible smartphone and data plan rates apply. Requires the Android Auto app on Google Play and an Android™-compatible smartphone running Android 5.0 or higher. Data plan rates apply. Android Auto is a trademark of Google LLC. ³Visit onstar.ca for vehicle availability, coverage maps, details and system limitations. Services and connectivity vary by model and conditions, as well as geographical and technical restrictions. 4G LTE service available in select markets. Requires active connected vehicle services and a data plan to access the vehicle's built-in Wi-Fi® Hotspot. Accessory Power must be active to use the Wi-Fi® Hotspot. Data plans provided by AT&T® or its local service provider. Credit card is required for purchase. Factory-installed equipment purchase may be required. ⁴Read the vehicle Owner's Manual for important feature limitations and information. ⁵Functionality may vary by model. Full functionality requires compatible Bluetooth® and smartphone, and USB connectivity for some devices. Data plan rates may apply. ⁶At time of printing, detailed map coverage is available for most major urban areas of the United States and for certain metropolitan areas of Canada (Vancouver, Calgary, Edmonton, Winnipeg, Windsor, London, Toronto, Ottawa, Montreal, Quebec City and Halifax). Coverage is significantly limited outside these areas. ⁷Bose is a registered trademark of Bose Corporation. ⁸The system wirelessly charges one compatible mobile device. Some phones have built-in wireless charging technology and others require a special adapter/back cover. To check for phone or other device compatibility, see my.buick.ca/learn or consult your carrier. ⁹Fuel-consumption estimates based on GM testing in accordance with Government of Canada approved test methods. Refer to vehicles.nrcan.gc.ca for details. Your actual fuel consumption will vary. ¹⁰Cargo and load capacity limited by weight and distribution.



Enclave Premium shown in Satin Steel Metallic (additional charge; premium paint) with available features.



ENCLAVE

TOMORROW'S SUV FOR TODAY'S FAMILY

The 2020 Buick Enclave combines three rows of first-class seating with an impressive list of amenities. So no matter how and where you use it, this 310-horsepower SUV confidently delivers a premium experience. Clever features like the hands-free power liftgate with LED logo projection and Enclave's available towing capability make life easier in ways you never expected.

Opt for the Sport Touring Package and you'll be rewarded with exclusive touches in a bold take on Enclave style. The Enclave Sport Touring radiates confidence with its unique black-out mesh grille with body-colour surround, Pitch Dark Night lower accent trim, 20" bright machine-faced aluminum wheels with Satin Graphite painted pockets and an "ST" badge on the hands-free power liftgate.

ENCLAVE

OBSESS OVER THE DETAILS, WE DID

With modern amenities and seating for up to seven, Enclave is where time together becomes time well spent. Escape into a spacious cabin where QuietTuning™ technology with Active Noise Cancellation helps reduce, block and absorb unwanted noise. Enclave also helps meet the ever-changing needs that each day brings. In particular, its Smart Slide second-row seating and available power-folding 60/40 split third-row seats offer extraordinary convenience and versatility.





Enclave Premium interior shown in Shale with Ebony accents and available features.



Enclave Avenir shown in Dark Slate Metallic with available features.

ENCLAVE AVENIR

AVENIR: MORE REWARDING IN EVERY WAY

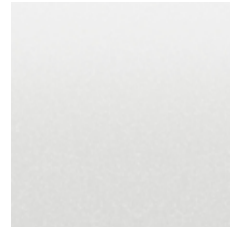
Welcome to the highest expression of Buick style. The 2020 Enclave Avenir's exclusive 20" aluminum wheels with Pearl Nickel finish and Avenir grille deliver distinctive style. Equally distinctive is how it makes you feel. Inside, meticulously crafted wood-tone trim and leather-appointed first- and second-row seating within the exclusive Chestnut- or Ebony-themed cabin are there to cater to your needs. Heated, ventilated and massaging first-row seating delivers the ultimate in personal space. And a power moonroof with rear fixed skylight floods the cabin with natural light. Wherever you look, the standards of style have been raised.



ENCLAVE



EXTERIOR COLOURS



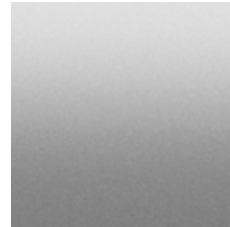
Summit White¹



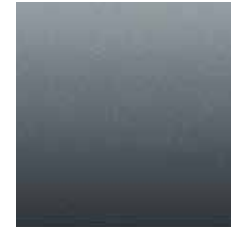
White Frost Tricoat^{2,3}



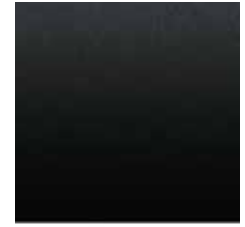
Red Quartz Tintcoat^{1,2}



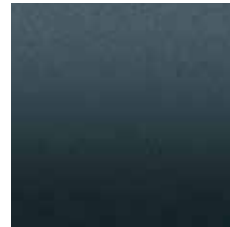
Quicksilver Metallic^{1,2}



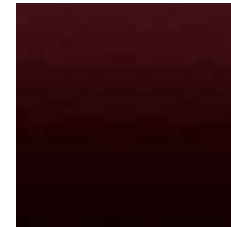
Satin Steel Metallic^{2,3}



Ebony Twilight Metallic^{2,3}



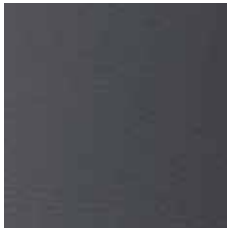
Dark Slate Metallic^{2,3}



Rich Garnet Metallic^{2,4}

¹Not available on Avenir trim. ²Additional charge; premium paint.
³No additional charge on Avenir trim. ⁴Only available on Avenir trim.

INTERIOR COLOURS



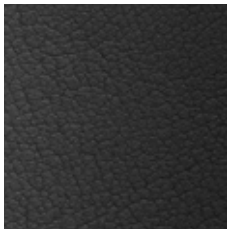
Dark Galvanized Perforated Leather-Appointed Seating⁵



Shale Perforated Leather-Appointed Seating⁵



Chestnut Perforated Leather-Appointed Seating⁶



Ebony Perforated Leather-Appointed Seating⁶



U.S. model shown.

Ebony accents included with all interior colours. Leather-appointed seating first and second rows only.

⁵Available on Essence and Premium; not available on Preferred or Avenir.

⁶Only available on Avenir.

WHEELS

18" Bright Silver Cast Aluminum

Standard on Essence and Premium.



20" Cast Aluminum With Premium Pearl Nickel Finish

Exclusive to Avenir.



20" Polished Cast Aluminum

Available on Essence and Premium.



20" Midnight Silver Painted Aluminum

Dealer-installed accessory wheel⁷. Available on Essence and Premium.



20" Bright Machine-Faced Aluminum With Satin Graphite Painted Pockets

Included in the Sport Touring Package on Essence. Also available as a dealer-installed accessory wheel⁷ on Essence and Premium.



⁷Use only GM-approved tire and wheel combinations. See buick.ca/accessories for more important tire and wheel information, or see your dealer.

ENCLAVE

FEATURES

	ESSENCE	PREMIUM	AVENIR
● STANDARD ○ AVAILABLE – NOT AVAILABLE			
ALL-WHEEL DRIVE, ACTIVE TWIN CLUTCH	—	●	●
ALL-WHEEL DRIVE, SINGLE CLUTCH	○	—	—
3.6L V6 ENGINE WITH 9-SPEED TRANSMISSION AND STOP/START TECHNOLOGY	●	●	●
APPLE CARPLAY® ¹ COMPATIBILITY	●	●	●
ANDROID AUTO™ ² COMPATIBILITY	●	●	●
LED HEADLAMPS	●	●	●
HANDS-FREE POWER LIFTGATE WITH LED LOGO PROJECTION	●	●	●
QUIETTUNING WITH ACTIVE NOISE CANCELLATION	●	●	●
HEATED FRONT SEATS	●	●	●
BUILT-IN WI-FI® HOTSPOT ³ (Includes data trial for 1 month from trial activation date or 3 GB, whichever comes first)	●	●	●
PERFORATED LEATHER-APPOINTED SEATS, FIRST AND SECOND ROWS	●	●	●
IN-VEHICLE AIR IONIZER	●	●	●
LANE CHANGE ALERT WITH SIDE BLIND ZONE ALERT ⁴	●	●	●
REAR CROSS TRAFFIC ALERT ⁴	●	●	●
8" DIAGONAL BUICK INFOTAINMENT SYSTEM ⁵ WITH NAVIGATION ⁶	○ ⁷	○	●
REAR CAMERA MIRROR ⁴	○	○	●
HD SURROUND VISION ⁴	○	○	●
POWER MOONROOF WITH REAR FIXED SKYLIGHT	○	○	●
BOSE® PERFORMANCE-ENHANCED PREMIUM 10-SPEAKER SYSTEM WITH AMP AND SUBWOOFER	○ ⁹	●	●
VENTILATED FRONT SEATS WITH MASSAGE FEATURE	—	●	●
HEATED SECOND-ROW CAPTAIN'S CHAIRS	—	●	●
THIRD-ROW POWER-FOLDING SEATS	—	●	●
AUTOMATIC HEATED STEERING WHEEL WITH AUTOMATIC HEATED AND VENTILATED FRONT SEATS	—	●	●
LANE KEEP ASSIST WITH LANE DEPARTURE WARNING ⁴	—	●	●
SAFETY ALERT SEAT ⁴	—	●	●
FRONT PARK ASSIST ⁴	—	●	●
FORWARD COLLISION ALERT ⁴	—	●	●

AVENIR EXCLUSIVE

Includes Black Ice grille, 20" Pearl Nickel wheels and unique Avenir badging detail; Ebony or Chestnut perforated leather-appointed seating, first and second rows; real wood-accented steering wheel; wireless smartphone charging pad;¹⁰ and 8" diagonal reconfigurable enhanced Driver Information Centre

PACKAGES

Driver Confidence Package ⁴ (Standard on Essence)	Includes Lane Change Alert with Side Blind Zone Alert and Rear Cross Traffic Alert
Driver Confidence Package II ⁴ (Standard on Premium and Avenir)	Includes Driver Confidence Package, Lane Keep Assist with Lane Departure Warning, Safety Alert Seat, Front and Rear Park Assist, Forward Collision Alert, Automatic Emergency Braking, Following Distance Indicator, IntelliBeam auto high-beam headlamps and Front Pedestrian Braking. When Avenir Technology Package is ordered, Enhanced Automatic Emergency Braking replaces Automatic Emergency Braking.
Trailer Package (Available on Essence, Premium and Avenir)	Includes heavy-duty cooling system, trailering assist guidelines, Hitch Guidance with Hitch View, ⁴ trailer hitch and wiring harness, max 2268 kg (5000-lb.) trailering ¹¹
Avenir Technology Package (Available on Avenir)	Includes Adaptive Cruise Control–Advanced, ⁴ Enhanced Automatic Emergency Braking ⁴ and premium ride suspension/Continuously Variable Real-Time Damping chassis
Sport Touring Package (Available on Essence)	Includes unique sport grille with body-colour surround, "ST" badge on the liftgate, Pitch Dark Night lower accent trim and 20" bright machine-faced aluminum wheels with Satin Graphite painted pockets. Available only with Red Quartz Tintcoat, Ebony Twilight Metallic, White Frost Tricoat or Quicksilver Metallic exterior paint.

SPECIFICATIONS

DIMENSIONS MM (INCHES)		CAPACITIES	
Wheelbase	3071 (120.9)	Engine Type	3.6L V6 SIDI VVT with Stop/Start technology
Overall length/height	5189/1775 (204.3/69.9)	Transmission	9-speed automatic
Body width/with mirrors	2002/2268 (78.8/89.3)	Horsepower	310 @ 6800 rpm
Track width, front/rear	1709/1702 (67.3/67.0)	Torque	266 lb.-ft. @ 2800 rpm
Headroom, first/second/third row	1041/1013/955 (41.0/39.9/37.6)	Estimated Fuel Consumption, L/100 km ¹²	13.0 city/9.1 hwy (FWD), 13.6 city/9.6 hwy (AWD)
Shoulder room, first/second/third row	1585/1567/1455 (62.4/61.7/57.3)	Fuel Tank, L (approx.), FWD/AWD	72/83 litres
Hip room, first/second/third row	1501/1466/1232 (59.1/57.7/48.5)	Max Cargo Capacity, L (cu. ft.) ¹³	Behind first-row seats with second and third rows folded: 2764.0 (97.6) With second row up and third row folded: 1642.6 (58.0) Behind third-row seats: 668.4 (23.6)
Legroom, first/second/third row	1046/988/851 (41.2/38.9/33.5)		

¹Vehicle user interface is a product of Apple® and its terms and privacy statements apply. Requires compatible iPhone® and data plan rates apply. Apple CarPlay is a trademark of Apple, Inc. Siri, iPhone and iTunes are trademarks of Apple, Inc., registered in the U.S. and other countries. ²Vehicle user interface is a product of Google™ and its terms and privacy statements apply. Requires the Android Auto app on Google Play and an Android™-compatible smartphone running Android 5.0 or higher. Data plan rates apply. Android Auto is a trademark of Google LLC. ³Visit onstar.ca for vehicle availability, coverage maps, details and system limitations. Services and connectivity vary by model and/or vehicle configuration and conditions, as well as geographical and technical restrictions. 4G LTE service available in select markets. Requires active connected vehicle services and a data plan to access the vehicle's built-in Wi-Fi® Hotspot. Accessory Power must be active to use the Wi-Fi® Hotspot. Data plans provided by AT&T® or its local service provider. Credit card is required for purchase. ⁴Read the vehicle Owner's Manual for important feature limitations and information. ⁵Functionality may vary by model. Full functionality requires compatible Bluetooth® and smartphone, and USB connectivity for some devices. Data plan rates may apply. ⁶At time of printing, detailed map coverage is available for most major urban areas of the United States and for certain metropolitan areas of Canada (Vancouver, Calgary, Edmonton, Winnipeg, Windsor, London, Toronto, Ottawa, Montreal, Quebec City and Halifax). Coverage is significantly limited outside these areas. ⁷Requires Bose premium speaker system. ⁸Bose is a registered trademark of Bose Corporation. ⁹Included and only available with Buick Infotainment System with Navigation. ¹⁰The system wirelessly charges one compatible mobile device. Some phones have built-in wireless charging technology and others require a special adapter/back cover. To check for phone or other device compatibility, see my.buick.ca/learn or consult your carrier. ¹¹Before you buy a vehicle or use it for trailering, carefully review the trailering section of the Owner's Manual. The weight of passengers, cargo and options or accessories may reduce the amount you can tow. ¹²Fuel-consumption estimates based on GM testing in accordance with Government of Canada approved test methods. Refer to vehicles.nrcan.gc.ca for details. Your actual fuel consumption will vary. ¹³Cargo and load capacity limited by weight and distribution.



Encore

First-Ever Encore GX



Envision

Enclave Avenir

BUICK INNOVATION

SOPHISTICATED FROM THE OUTSIDE IN

QUIETTUNING™ TECHNOLOGY Buick's QuietTuning technology with available Active Noise Cancellation utilizes multiple measures designed to help reduce, block and absorb unwanted noise.

INTELLIGENT ALL-WHEEL DRIVE To help maximize traction, intelligent All-Wheel Drive with active twin clutch, available on select Buick models, sends power to the wheel(s) with more grip in slippery road conditions and helps improve cornering and acceleration on dry roads.

BUICK INFOTAINMENT SYSTEM¹ The Buick Infotainment System takes your in-vehicle experience to the next level with modern features that make every drive more productive and rewarding. Plus, smartphone compatibility means you can stay seamlessly in sync.

HANDS-FREE POWER LIFTGATE WITH LED LOGO PROJECTION When your hands are full, let the hands-free power liftgate with LED logo projection available on select Buick models give you an assist. With the keyless entry fob in your pocket, simply kicking your foot under the rear bumper provides access to the cargo area. There's even a Buick logo projected on the ground to show you just where to kick.

IN-VEHICLE AIR IONIZER Available on select Buick models, the in-vehicle air ionizer is designed to help keep the air in the cabin fresher for you and your passengers.

BUICK DRIVER CONFIDENCE Confident travel starts with smart technologies. That's why we're debuting Buick Driver Confidence—a suite of advanced safety and driver-assistance features that will come standard—on the First-Ever Encore GX. Buick Driver Confidence includes Forward Collision Alert, Automatic Emergency Braking, Lane Keep Assist with Lane Departure Warning, Following Distance Indicator, IntelliBeam headlamps and Front Pedestrian Braking.

¹Functionality may vary by model. Full functionality requires compatible Bluetooth® and smartphone, and USB connectivity for some devices. Data plan rates may apply.



Safety or driver-assistance features are no substitute for the driver's responsibility to operate the vehicle in a safe manner. The driver should remain attentive to traffic, surroundings and road conditions at all times. Visibility, weather and road conditions may affect feature performance. Read the vehicle Owner's Manual for more important feature limitations and information.



Safety or driver-assistance features are no substitute for the driver's responsibility to operate the vehicle in a safe manner. The driver should remain attentive to traffic, surroundings and road conditions at all times. Visibility, weather and road conditions may affect feature performance. Read the vehicle Owner's Manual for more important feature limitations and information.



BUICK SAFETY

SERIOUS ABOUT SAFETY

PERCEIVE To help make you more aware of your surroundings, Buick vehicles empower you with available technologies that are designed to help raise your awareness of the road around you.

PREVENT When certain hazards are detected, available features on your Buick can trigger alerts to let you know.

PROTECT In the event of a crash, strong structural dynamics, intelligent airbag systems¹ and other advanced safety systems work in concert to help protect you and your passengers.

AVAILABLE DRIVER-ASSISTANCE AND SAFETY TECHNOLOGIES ON SELECT MODELS

HD Surround Vision • Adaptive Cruise Control–Advanced • Rear Cross Traffic Alert • Lane Keep Assist with Lane Departure Warning • Lane Change Alert with Side Blind Zone Alert • Safety Alert Seat • Forward Collision Alert • Enhanced Automatic Emergency Braking • Front and Rear Park Assist • Front Pedestrian Braking • Rear Vision Camera

For a detailed look at the driver-assistance and safety technologies available on each model, please visit buick.ca.

ONSTAR® SAFETY AND SECURITY² With available OnStar, you can have added peace of mind knowing an OnStar Advisor is ready to help 24/7. Feel more confident and ready for the road ahead with available features like Automatic Crash Response, Stolen Vehicle Assistance and more.

¹A NOTE ON CHILD SAFETY: Always use seat belts and the correct child restraint for your child's age and size, even with airbags. Even in vehicles equipped with the Passenger Sensing System, children are safer when properly secured in a rear seat in the appropriate infant, child or booster seat. Never place a rear-facing infant restraint in the front seat of any vehicle equipped with an active frontal airbag. See your vehicle Owner's Manual and child safety seat instructions for more safety information. ²Requires vehicle electrical system (including battery), wireless service and GPS satellite signal to be available and operating for features to function properly. Services are subject to user terms and limitations and vary by model and/or vehicle configuration. Not all vehicles may transmit all crash data. OnStar acts as a link to existing emergency service providers; OnStar Emergency Advisors are certified by the International Academies of Emergency Dispatch. Roadside service provided by Allstate Roadside Services, and limitations and restrictions apply. Stolen Vehicle Assistance requires armed factory-installed theft-deterrent system and selection of notification communication preference(s); these services are intended to assist with vehicle recovery and do not prevent theft or protect against damage or loss; additional messaging and data rates may apply. Visit onstar.ca for more details.

BUICK CONNECTIVITY

GIVING CONNECTIVITY A STARRING ROLE

BUICK CONNECTED SERVICES Every new Buick comes with a host of in-vehicle benefits. Connected Access¹ offers the latest technology to help you improve every drive—standard connectivity for 10 years, which includes and enables services such as Vehicle Diagnostics and Dealer Maintenance Notification.

myBUICK APP² The available myBuick[®] mobile app offers ways to send remote commands to your properly equipped Buick from virtually anywhere. When you upgrade to the Remote Access Plan,³ remotely start and stop your engine, check estimated fuel levels and even set and share custom notifications for vehicle arrivals and departures with Vehicle Locate.

BUILT-IN WI-FI[®] HOTSPOT¹ A built-in Wi-Fi[®] Hotspot with available data supports up to seven devices so your passengers can stream, surf and post.

APPLE CARPLAY^{®4} COMPATIBILITY Just plug in your compatible iPhone[®] and you'll have easy access to your contacts, maps, Apple Music[™] and other compatible apps on your Buick's colour touch-screen.

ANDROID AUTO^{™5} COMPATIBILITY Android Auto compatibility helps provide access to your phone, texts and music on your touch-screen display. And with Google Maps, you can get voice-guided navigation and live traffic information while keeping your hands on the wheel and your eyes on the road.

WIRELESS SMARTPHONE CHARGING⁶ Cut the cord with the help of available wireless charging for compatible smartphones on select Buick models.



U.S. model shown. Features shown may not be available in Canada.



TAKE THE NEXT STEP

To learn more about the features, options and colours available on each model, use the Build & Price tool at [buick.ca](https://www.buick.ca).

Of course, what makes a Buick special is how it enhances everyday life. We invite you to take a test drive and experience firsthand everything Buick has to offer.



¹Services, connectivity and capabilities are subject to user terms and limitations and vary by model and/or vehicle configuration, as well as geographical and technical restrictions. Connected Access does not include emergency or security services; service availability requires compatible 4G LTE wireless networks; standard connectivity available to original purchaser for 10 years from the trial activation date for properly equipped vehicles and is not transferable. 4G LTE service available in select markets; requires data plan (credit card needed for purchase) to access the vehicle's built-in Wi-Fi® Hotspot; Accessory Power must be active to use the Wi-Fi® Hotspot; data plans are provided by AT&T® or its local service provider and may change. Vehicle Diagnostics requires enrolment and email address on file; message and data rates may apply; not all issues will deliver alerts; Vehicle Status and On-Demand Diagnostics require a paid service plan. Visit onstar.ca for vehicle availability, coverage maps, details and system limitations. ²Available on select Apple® and Android™ devices. Service availability, features and functionality are subject to limitations and vary by model and/or vehicle configuration, device and the plan in which you are enrolled. Device data connection required. Visit onstar.ca for more details. ³Diagnostic capabilities vary by model and/or vehicle configuration and do not cover all vehicle conditions; requires email address on file and enrolment in Vehicle Diagnostics to receive alerts; additional message and data rates may apply. Tire Pressure Monitoring System required (excludes spare). Does not include emergency or security services. Vehicle Locate is designed to locate compatible connected vehicles and capabilities vary by model and/or vehicle configuration and mobile device; available in the U.S., Canada and Mexico only. Remote Key Fob enables services such as remote start (requires GM factory-installed and enabled remote-start system), door lock/unlock (requires automatic locks) as well as lights and horn activation. Send-to-Vehicle Navigation requires a GM factory-installed navigation system to send directions to the vehicle. Alexa™ and Google Assistant™ are only available in the U.S. and Canada in U.S. English on properly equipped vehicles; some commands are not supported on some vehicles. Services are subject to user terms and limitations. Visit onstar.ca for more details. ⁴Vehicle user interface is a product of Apple® and its terms and privacy statements apply. Requires compatible iPhone® and data plan rates apply. Apple CarPlay is a trademark of Apple, Inc. Siri, iPhone and iTunes are trademarks of Apple, Inc., registered in the U.S. and other countries. ⁵Vehicle user interface is a product of Google™ and its terms and privacy statements apply. Requires the Android Auto app on Google Play and an Android-compatible smartphone running Android 5.0 or higher. Data plan rates apply. Android Auto is a trademark of Google LLC. ⁶The system wirelessly charges one compatible mobile device. Some phones have built-in wireless charging technology and others require a special adapter/back cover. To check for phone or other device compatibility, see my.buick.ca/learn or consult your carrier. ©2020 General Motors of Canada Company. All rights reserved.

