

2020
GMC ACADIA



**LIVE
LIKE A PRO**



ACADIA DENALI in Carbon Black Metallic (additional charge; premium paint) shown with available equipment.



Improving on yesterday's accomplishments is what it's all about. Always doing more and doing it better. This uncompromising spirit is why the new Acadia is up to any task. With refined style, up to three rows of versatile configurations and advanced technologies, Acadia is designed to enhance your on-the-go lifestyle.

Experience the SUV as capable as you are—the new 2020 GMC Acadia.



ACADIA DENALI in Carbon Black Metallic (additional charge; premium paint) shown with available equipment.

DENALI

ANYWHERE WORTH GOING IS WORTH GOING WELL

- NEW SCULPTED FRONT AND REAR DESIGN
- SIGNATURE DENALI DESIGN, EXCLUSIVE GRILLE AND 20" WHEELS
- LED HEADLAMPS AND TAIL LAMPS WITH SIGNATURE C-SHAPE DESIGN
- HANDS-FREE PROGRAMMABLE POWER LIFTGATE WITH GMC LOGO PROJECTION
- ADAPTIVE RIDE CONTROL IS AVAILABLE



GET WELL-ACQUAINTED WITH WELL-APPOINTED

Acadia Denali goes all in with three-row seating, genuine materials—including authentic wood accents and warm-tone burnished aluminum trim—and leather-appointed first- and second-row seats. Refinements continue with a heated steering wheel and heated front seats that can automatically be turned on with a vehicle remote starter system when it's cold outside. Then add embroidered Denali front-seat head restraints, ventilated front seats and heated second-row bucket seats accentuated with French seam stitching. You'll also enjoy the convenience of the open centre console and its generous storage space.

¹Functionality may vary by model. Full functionality requires compatible Bluetooth® and smartphone, and USB connectivity for some devices. Data plan rates may apply. ²At time of posting, detailed map coverage is available for most major urban areas of the United States and for certain metropolitan areas of Canada (Vancouver, Calgary, Edmonton, Winnipeg, Windsor, London, Toronto, Ottawa, Montreal, Quebec City and Halifax). Coverage is significantly limited outside these areas. ³Bose is a registered trademark of Bose Corporation. ⁴Read the vehicle Owner's Manual for important feature limitations and information.



ACADIA DENALI OFFERS AN ARRAY OF PREMIUM MATERIALS AND EQUIPMENT:

- NEW REAL ASH WOOD AND BURNISHED ALUMINUM TRIM
- HEATED AND VENTILATED PERFORATED LEATHER-APPOINTED FRONT SEATS
- 8" DIAGONAL NEXT-GENERATION GMC INFOTAINMENT SYSTEM¹ WITH NAVIGATION² AND BOSE³ PREMIUM SOUND SYSTEM
- 6" DIAGONAL COLOUR HEAD-UP DISPLAY (LATE AVAILABILITY)
- REAR CAMERA MIRROR⁴ IS AVAILABLE
- DUAL SKYSCAPE SUNROOF IS AVAILABLE

ACADIA DENALI in Dark Galvanized/Light Shale shown with available equipment.

AT4



ACADIA AT4 in Summit White shown with available equipment.

GO YOUR OWN WAY: THE FIRST EVER ACADIA AT4



- EXCLUSIVE BLACK CHROME EXTERIOR ACCENTS
- 3.6L V6 ENGINE WITH 310 HP
- 17" GLOSS-BLACK WHEELS WITH ALL-TERRAIN TIRES
- TRACTION SELECT SYSTEM WITH OFF-ROAD MODE
- HILL START ASSIST AND HILL DESCENT CONTROL
- ADVANCED TWIN-CLUTCH AWD SYSTEM

Some of the best routes are the ones you make. That's exactly what the First Ever Acadia AT4 with its advanced twin-clutch AWD system was engineered to help you do. In addition, the Traction Select System allows you to quickly switch among multiple traction modes, including an Off-Road mode, to improve traction and control while driving on gravel or in muddy conditions.

AS DISTINCTIVE AS YOUR DESTINATIONS



EXCLUSIVE AT4 INTERIOR OFFERS:

- EXCLUSIVE KALAHARI ACCENTS AND UNIQUE TRIM
- AT4 STITCHING ON FRONT HEAD RESTRAINTS AND AT4-EMBOSSED SILL PLATES
- HEATED DRIVER AND FRONT-PASSENGER SEATING
- CARGO MANAGEMENT SYSTEM
- DUAL SKYSCAPE SUNROOF IS AVAILABLE



Acadia AT4 supports you no matter where your wanderlust takes you. You'll find a unique, athletic interior in cloth or available first- and second-row leather-appointed seats for your active lifestyle. Exclusive trim with Kalahari accents and smart storage compartments await. To accommodate travel companions, choose two-row, 5-person or available three-row, 6- or 7-person seating.



ACADIA AT4 in Jet Black/Jet Black shown with available equipment.

SLT



ACADIA SLT in Red Quartz Tintcoat (additional charge; premium paint) shown with available equipment.

Wheel shown throughout available to order through early 2020. Availability may be limited. See dealer for details.

BOLDLY GO ANYWHERE



- DISTINCTIVE CHROME ACCENTS
- LED HEADLAMPS AND TAIL LAMPS WITH SIGNATURE C-SHAPE DESIGN
- 18" OR AVAILABLE 20" MACHINED ALUMINUM WHEELS
- NEW 2.0L TURBO OR 3.6L V6 ENGINES ARE AVAILABLE (LATE AVAILABILITY ON THE 2.0L)
- POWER-ADJUSTABLE HEATED MIRRORS WITH INTEGRATED LED TURN SIGNALS

Celebrate the everyday with Acadia SLT. It delivers everything you want in a mid-size SUV: style, versatility, refinement, capability and efficiency. Outside, the front and rear are newly designed and highlighted by LED headlamps, tail lamps and an integrated grille.

EQUALLY IMPRESSIVE INSIDE



ACADIA SLT OFFERS PLENTY OF AMENITIES AND STORAGE OPTIONS:

- HEATED LEATHER-APPOINTED FRONT SEATS
- LEATHER-WRAPPED STEERING WHEEL
- KEYLESS OPEN AND START
- FOLD-FLAT SECOND- AND THIRD-ROW SEATS
- APPLE CARPLAY™¹ AND ANDROID AUTO™² COMPATIBILITY
- NEXT-GENERATION 8" DIAGONAL GMC INFOTAINMENT SYSTEM³ WITH AVAILABLE NAVIGATION⁴

¹Vehicle user interface is a product of Apple® and its terms and privacy statements apply. Requires compatible iPhone® and data plan rates apply. Apple CarPlay is a trademark of Apple, Inc. Siri, iPhone and iTunes are trademarks of Apple, Inc., registered in the U.S. and other countries. ²Vehicle user interface is a product of Google™ and its terms and privacy statements apply. Requires the Android Auto app on Google Play and an Android™-compatible smartphone running Android 5.0 or higher. Data plan rates apply. Android Auto is a trademark of Google LLC. ³Functionality may vary by model. Full functionality requires compatible Bluetooth and smartphone, and USB connectivity for some devices. Data plan rates may apply. ⁴At time of posting, detailed map coverage is available for most major urban areas of the United States and for certain metropolitan areas of Canada (Vancouver, Calgary, Edmonton, Winnipeg, Windsor, London, Toronto, Ottawa, Montreal, Quebec City and Halifax). Coverage is significantly limited outside these areas.



We've upgraded your accommodations. You'll enjoy premium materials, convenient versatility and expanded console storage with the integration of Electronic Precision Shift.

ACADIA SLT in Jet Black/Jet Black shown with available equipment.

**THREE ROWS.
INFINITE OPTIONS.**

ACADIA DENALI in Dark Galvanized/Light Shale.



- THREE ROWS OF SEATING AVAILABLE WITH SMART SLIDE SECOND ROW FOR EASY ACCESS TO THE THIRD ROW
- NEW PASS-THROUGH UNDER-CONSOLE STORAGE AND SIDE-BY-SIDE CUPHOLDERS IN THE FRONT CONSOLE
- TRI-ZONE AUTOMATIC CLIMATE CONTROL ON THREE-ROW MODELS AND DUAL-ZONE ON TWO-ROW MODELS
- CARGO MANAGEMENT SYSTEM (STANDARD AND ONLY AVAILABLE ON AT4 MODELS WITH TWO-ROW SEATING)
- HANDS-FREE PROGRAMMABLE POWER LIFTGATE WITH GMC LOGO PROJECTION

Because your life is full—responsibilities, passions, relationships—Acadia accommodates up to seven in style, comfort and space. Acadia enables versatility with second-row Smart Slide seats that allow easy third-row access with just one hand. With the second and third rows folded flat, Acadia gives you 2237 L (79 cu. ft.) of max cargo space.¹ When your hands are full, a hands-free programmable power liftgate is there to help. To find the foot-kick location, simply look for the GMC logo projection.

¹Cargo and load capacity limited by weight and distribution. To achieve 2237 L (79 cu. ft.), second- and third-row seats must be folded flat.



3.6L V6

(SHOWN AT LEFT)

310 HP/271 LB.-FT. OF TORQUE

STANDARD AT4/DENALI

AVAILABLE SLE/SLT

2.0L TURBO

(LATE AVAILABILITY)

230 HP/258 LB.-FT. OF TORQUE (GM ESTIMATED)

STANDARD SLE AWD/SLT

2.5L

193 HP/188 LB.-FT. OF TORQUE

STANDARD SLE FWD

TRACTION SELECT SYSTEM

Acadia's available Traction Select System provides added confidence by allowing you to switch among up to five specific modes to tailor your ride to different road conditions and functions such as trailering.

ADAPTIVE RIDE CONTROL

Newly enhanced Adaptive Ride Control, available on Acadia Denali, uses a Continuous Damping Control Suspension system to adjust damping forces every 2 milliseconds—delivering a quiet and comfortable ride.

THE POSSIBILITIES OF POWER



ACADIA AT4 in Summit White shown with available equipment.



Safety or driver-assistance features are no substitute for the driver's responsibility to operate the vehicle in a safe manner. The driver should remain attentive to traffic, surroundings and road conditions at all times. Visibility, weather and road conditions may affect feature performance. Read the vehicle Owner's Manual for more important feature limitations and information.

SEE IT, SENSE IT, AVOID IT



STANDARD:

- HIGH DEFINITION REAR VISION CAMERA

AVAILABLE:

- ADAPTIVE CRUISE CONTROL—ADVANCED (DENALI ONLY)
- LANE CHANGE ALERT WITH SIDE BLIND ZONE ALERT
- REAR CROSS TRAFFIC ALERT
- REAR PARK ASSIST
- FORWARD COLLISION ALERT
- AUTOMATIC EMERGENCY BRAKING
- FRONT PEDESTRIAN BRAKING
- FRONT AND REAR PARK ASSIST



Acadia is engineered for road awareness with safety and driver-assistance features that help warn you of potential dangers. Its comprehensive collection of available driver-alert technologies helps you and your companions feel confident and secure. After all, we believe the best way to handle a collision is to avoid it.

Discover more of Acadia's available safety features at gmccanada.ca.

TECHNOLOGY IS FRONT AND CENTRE



- HIGH DEFINITION SURROUND VISION IS AVAILABLE
- 6" DIAGONAL COLOUR HEAD-UP DISPLAY IS AVAILABLE (LATE AVAILABILITY)
- REAR CAMERA MIRROR IS AVAILABLE (DENALI ONLY)



Acadia offers available technologies engineered to help keep you aware. High Definition Surround Vision provides a virtual bird's-eye view of Acadia and its surroundings. The Head-Up Display projects vehicle data, available active safety information and phone and infotainment sources onto the windshield. And the dual-function Rear Camera Mirror can be used as a conventional rear-view mirror or as a camera-based rear-view mirror to help you see around potential obstructions, change lanes and check traffic conditions.





ACADIA OFFERS:

- APPLE CARPLAY™¹ COMPATIBILITY FOR IPHONE® (SHOWN AT LEFT)
- ANDROID AUTO² COMPATIBILITY
- BUILT-IN 4G LTE WI-FI® HOTSPOT³ (DATA PLAN REQUIRED)
- AVAILABLE ONSTAR®⁴ SAFETY & SECURITY PLAN⁵



GMC CONNECTED SERVICES⁴

Your new 2020 Acadia offers a host of in-vehicle benefits. Connected Access⁶ offers the latest technology to help you make the most of every drive—which includes standard connectivity for 10 years and enables services such as Vehicle Diagnostics and Dealer Maintenance Notification. You can also take your ownership experience to new levels by upgrading to other GMC Connected Services.

myGMC™ APP⁷

When you download the available myGMC App, you have access to features like scheduling service, learning how to use your vehicle's technologies and other ways to simplify your ownership experience. When you upgrade to Remote Access,⁸ you can remotely start and stop your engine, check fuel levels and even set and share notifications for vehicle arrivals and departures with Vehicle Locate.⁹

Discover how to stay connected at gmccanada.ca.



¹Vehicle user interface is a product of Apple® and its terms and privacy statements apply. Requires compatible iPhone® and data plan rates apply. Apple CarPlay is a trademark of Apple, Inc. Siri, iPhone and iTunes are trademarks of Apple, Inc., registered in the U.S. and other countries. ²Vehicle user interface is a product of Google and its terms and privacy statements apply. Requires the Android Auto app on Google Play and an Android-compatible smartphone running Android 5.0 or higher. Data plan rates apply. Android Auto is a trademark of Google LLC. ³Visit onstar.ca for vehicle availability, coverage maps, details and system limitations. Services and connectivity vary by model and/or vehicle configuration and conditions, as well as geographical and technical restrictions. 4G LTE service available in select markets. Requires active connected vehicle services and a data plan to access the vehicle's built-in Wi-Fi Hotspot. Accessory Power must be active to use the Wi-Fi Hotspot. Data plans provided by AT&T® or its local service provider. Credit card is required for purchase. ⁴Connected vehicle services require a connected vehicle services plan or trial, connected hardware, vehicle electrical system (including battery), wireless service and GPS satellite signal to be available and operating for features to function properly. OnStar acts as a link to existing emergency service providers. Visit onstar.ca for coverage map, details and system limitations. ⁵Requires vehicle electrical system (including battery), wireless service and GPS satellite signal to be available and operating for features to function properly. Services are subject to user terms and limitations and vary by model and/or vehicle configuration. Not all vehicles may transmit all crash data. OnStar acts as a link to existing emergency service providers; OnStar Emergency Advisors are certified by the International Academies of Emergency Dispatch. Roadside service provided by Allstate Roadside Services, and limitations and restrictions apply. Stolen Vehicle Assistance requires armed factory-installed theft-deterrent system and selection of notification communication preference(s); these services are intended to assist with vehicle recovery and do not prevent theft or protect against damage or loss; additional messaging and data rates may apply. Visit onstar.ca for more details. ⁶Limitations apply. Not transferable. Standard connectivity available to original purchaser for 10 years from the trial activation date for properly equipped vehicles. Visit onstar.ca for details and further plan limitations. Connected Access does not include emergency or security services. Availability of Connected Access and any of its services is dependent on compatible 4G LTE wireless networks and is also subject to change. ⁷Available on select Apple® and Android devices. Service availability, features and functionality are subject to limitations and vary by model and/or vehicle configuration, device and the plan in which you are enrolled. Device data connection required. ⁸Diagnostic capabilities vary by model and/or vehicle configuration and do not cover all vehicle conditions; requires email address on file and enrolment in Vehicle Diagnostics to receive alerts; additional message and data rates may apply. Tire Pressure Monitoring System required (excludes spare). Does not include emergency or security services. Vehicle Locate is designed to locate compatible connected vehicles and capabilities vary by model and/or vehicle configuration and mobile device; available in the U.S., Canada and Mexico only. Remote Key Fob enables services such as remote start (requires GM factory-installed and enabled remote-start system), door lock/unlock (requires automatic locks) as well as lights and horn activation. Send-to-Vehicle Navigation requires a GM factory-installed navigation system to send directions to the vehicle. Alexa™ and Google Assistant™ are only available in the U.S. and Canada in U.S. English on properly equipped vehicles; some commands are not supported on some vehicles. Services are subject to user terms and limitations. ⁹U.S., Canada and Mexico only. Requires select paid plan. Service is designed to locate compatible connected vehicles. Eligibility varies by model and/or vehicle configuration. Functionality varies by mobile device. Message and data rates may apply. Requires contact method on file and enrolment to receive alerts. User terms and limitations apply.

GO FAR, STAY CLOSE



ACADIA AT4 in Summit White shown with available equipment.

THE QUESTION IS, WHICH ONE?

Choose the Acadia that's right for you at gmccanada.ca.

ACADIA TRIMS



SLE models come with a 9-speed automatic transmission, LED headlamps and tail lamps, cloth seating, heated front seats, the next-generation 8" diagonal GMC Infotainment System¹, Smart Slide flat-folding second-row seats, a hands-free programmable power liftgate with GMC logo projection, an 8-way power-adjustable driver seat and vehicle remote starter system.



SLT includes most SLE standard content and adds features such as a 2.0L Turbo engine (late availability), perforated leather-appointed first- and second-row seats, LED fog lamps, Lane Change Alert with Side Blind Zone Alert,² Rear Cross Traffic Alert,² Rear Park Assist² and a Traction Select System.



AT4 includes most SLT standard content and adds a 3.6L V6 engine, cloth or available perforated leather-appointed front seats, an advanced twin-clutch AWD system, all-terrain tires, premium durable floor mats, a Cargo Management System (2-row models), Hill Descent Control and Hill Start Assist.



DENALI includes most SLT standard content and is embellished with premium features such as unique 20" wheels, an automatic heated steering wheel, ventilated front seats, heated second-row outboard seats, a 3.6L V6 engine, Head-Up Display, Forward Collision Alert,² Automatic Emergency Braking,² Front Pedestrian Braking,² Front and Rear Park Assist,² Lane Keep Assist with Lane Departure Warning,² IntelliBeam headlamps, Following Distance Indicator,² Safety Alert Seat,² Navigation³ and a Bose⁴ Premium Sound System.

¹Functionality may vary by model. Full functionality requires compatible Bluetooth® and smartphone, and USB connectivity for some devices. Data plan rates may apply. ²Read the vehicle Owner's Manual for important feature limitations and information. ³At time of posting, detailed map coverage is available for most major urban areas of the United States and for certain metropolitan areas of Canada (Vancouver, Calgary, Edmonton, Winnipeg, Windsor, London, Toronto, Ottawa, Montreal, Quebec City and Halifax). Coverage is significantly limited outside these areas. ⁴Bose is a registered trademark of Bose Corporation.



ACADIA SLT in Red Quartz Tintcoat (additional charge; premium paint),
ACADIA DENALI in Carbon Black Metallic (additional charge; premium paint) and
ACADIA AT4 in Summit White, all shown with available equipment.

FIND YOUR TRUE COLOURS

EXTERIOR

QUICKSILVER METALLIC

EBONY TWILIGHT METALLIC¹

SUMMIT WHITE

SATIN STEEL METALLIC¹

CARBON BLACK METALLIC¹

SMOKEY QUARTZ METALLIC¹

RED MAHOGANY METALLIC¹

RED QUARTZ TINTCOAT¹

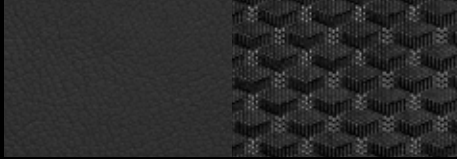
WHITE FROST TRICOAT^{1, 2}

DARK SKY METALLIC¹

INTERIOR

COLOURS

CLOTH



Jet Black/Jet Black — Standard on SLE

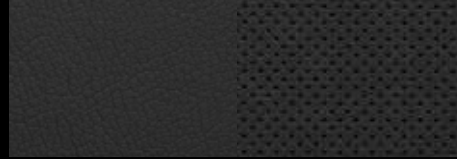


Cocoa/Light Ash Grey — Standard on SLE



Jet Black/Jet Black — Standard on AT4

LEATHER APPOINTMENTS



Jet Black/Jet Black Perforated — Standard on SLT



Cocoa/Light Ash Grey Perforated — Standard on SLT



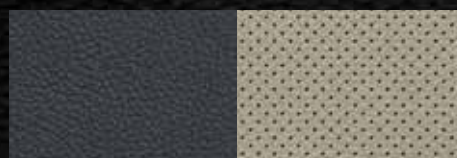
Jet Black/Jet Black Perforated — Available on AT4



Jet Black/Kalahari Perforated — Available on AT4



Jet Black/Jet Black Perforated — Standard on Denali



Dark Galvanized/Light Shale Perforated — Standard on Denali

DETAILS

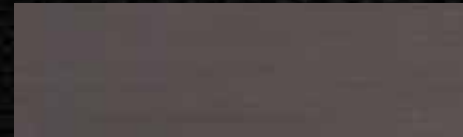
FINISHES



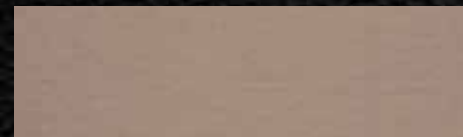
Axiom Aluminum — Standard on SLE/SLT



Combat Aluminum — Standard on AT4



Mortal Aluminum — Standard on AT4



Burnished Aluminum — Standard on Denali

DOOR/CONSOLE ACCENTS



Timberline Wood Tone — Standard on SLE



Luxury Brown Wood Tone — Standard on SLT



Arbiter Appliqué — Standard on AT4



Ash Wood — Standard on Denali

DESIGNED FOR DISTINCTION



17" Gloss-Black Aluminum (Q7D) — Standard on AT4



18" Machined Aluminum With Dark Accents (5PB) —
Standard on SLE



18" Machined Aluminum (RD9) — Standard on SLT



20" Ultra-Bright Machined Aluminum (SHV)¹ —
Available on SLT



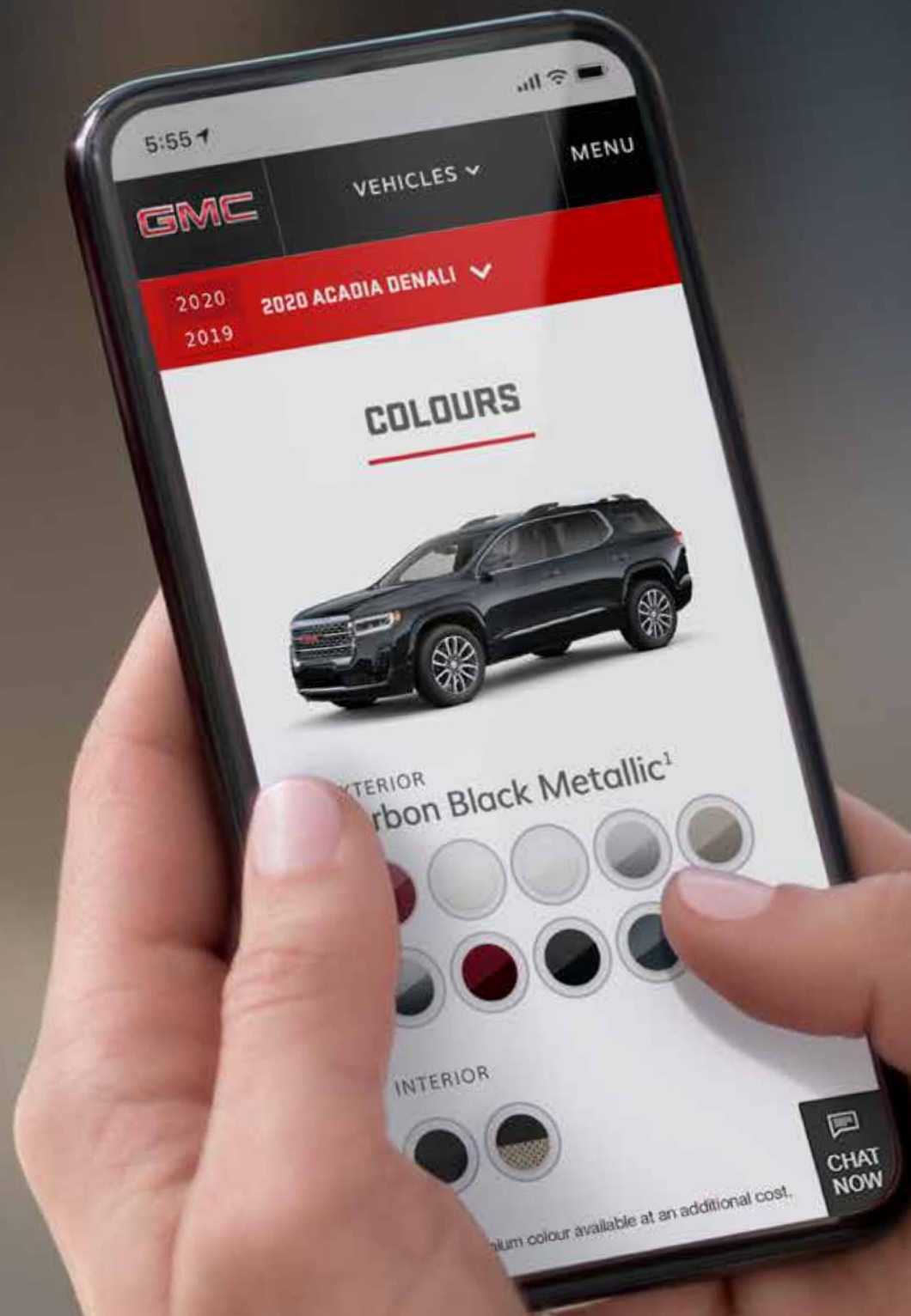
20" Machined Aluminum With Dark Accents (SSZ) —
Available on AT4

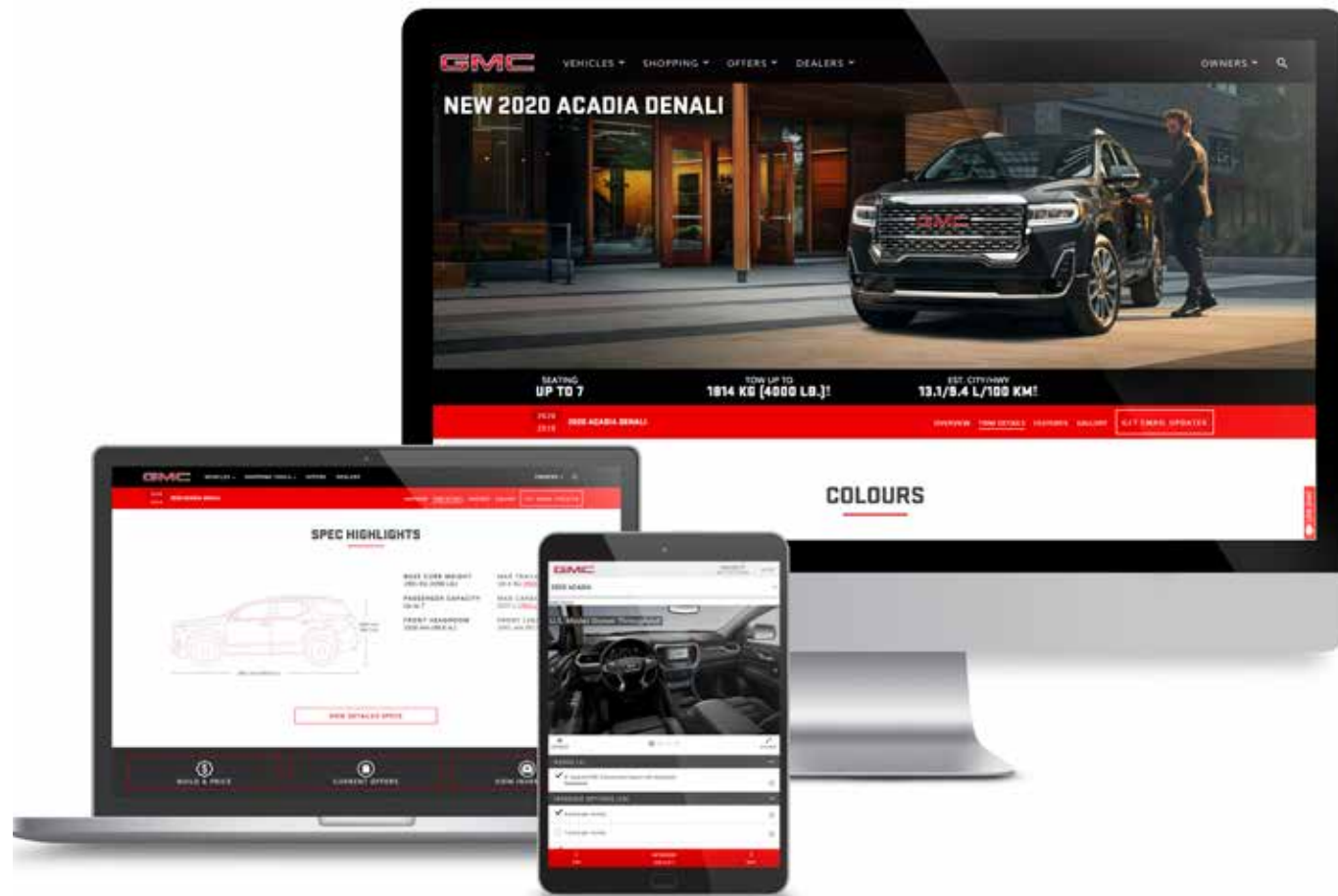
¹Wheel shown throughout available to order through early 2020. Availability may be limited. See dealer for details.



20" Ultra-Bright Machined Aluminum (SUE) — Standard on Denali

YOUR ACADIA STARTS HERE





GMC's smart, comprehensive online tools elevate your shopping experience. Learn more about Acadia's features, find the model that's right for you and sign up for email updates at gmccanada.ca.

DRESS IT UP, TAKE IT EVERYWHERE



GMC Accessories¹ are the only way to fully personalize your entire Acadia—inside and out. They're engineered and tested to meet the Professional Grade standards of your Acadia, as well as your own.

Find a full selection of Acadia accessories at gmccanada.ca/accessories.

¹Accessory warranty coverage, if any, varies. See your GM Warranty Booklet or GM dealer for details.



ACADIA AT4 in Summit White shown with dealer-installed accessories.

PROFESSIONAL GRADE



SIERRA HEAVY DUTY

CANYON

SIERRA

Canyon colour shown has limited availability.

IS OUR DNA



YUKON



TERRAIN



ACADIA

PEACE OF MIND, STANDARD WITH EVERY GMC ACADIA

Experience the GMC comprehensive coverage, warranty and protection program that comes standard with every new 2020 GMC Acadia purchased or leased in Canada. Simply, it is designed around you, to make it easy to keep your GMC like new—and give you the confidence you deserve when you need it most.

- 2-year/24,000 km¹ Lube-Oil-Filter Maintenance² (limit of two)
- 3-year/60,000 km¹ Base Warranty Coverage³
- 5-year/100,000 km¹ Powertrain Component Warranty Coverage³
- 5-year/100,000 km¹ Courtesy Transportation⁴
- 5-year/100,000 km¹ 24/7 Roadside Assistance⁴
- 6-year/160,000 km¹ sheet metal rust-through perforation coverage³
- 8-year/130,000 km¹ coverage³ on specified major emission components

OTHER OWNERSHIP PRIVILEGES AND PROGRAMS:⁵

- GM Protection Plan (GMPP)—The only extended service plan backed by the resources and commitment of General Motors, GMPP may be purchased at the time of sale or subsequently during the Base Warranty Coverage period.⁶
- Certified Service—With GM-certified technicians and GM-approved parts, nobody knows your GM vehicle better.
- GMC Owner Centre—As an owner, take advantage of the GMC Owner Centre. This online owner's destination gives you access to current offers and helpful resources such as Owner's Manuals. Find out more at gmcowner.ca.

TO HELP YOU PURCHASE OR LEASE A NEW VEHICLE:

- Purchase Financing and Leasing—On-the-spot financing, see dealer for full details.⁷
- GM Student Bonus Program—Students or recent graduates of high school, college or university⁷ may be eligible to receive a Student Bonus vehicle redemption allowance of \$500 or \$750^{5,8} (tax inclusive; purchased vehicle dependant) to use toward the purchase, lease or finance of one eligible new GMC vehicle.
- GM Card—Cardholders may redeem Earnings toward the total purchase price or lease down payment of an eligible new GMC truck or SUV. Restrictions and limitations apply. For full program details,⁸ visit gmccard.ca.

INFORMATION RESOURCES:

You can find more information about these programs from your GMC dealer, or at these information centres:

- The GM website at gmccanada.ca
- The GM Customer Care Centre at 1-800-GM-DRIVE (1-800-463-7483 or 1-800-263-3830 for TDD users)

A WORD ABOUT THIS BROCHURE Some of the equipment shown or described throughout this brochure may be available at extra cost. We have tried to make this brochure comprehensive and factual. We reserve the right, however, to make changes at any time, without notice, in prices, colours, materials, equipment, specifications, models and availability. Specifications, dimensions, measurements, ratings and other numbers in this brochure and other printed materials provided at the dealership or affixed to vehicles are approximations based upon design and engineering drawings and prototypes and laboratory tests. Your vehicle may differ due to variations in manufacture and equipment. Since some information may have been adapted since the time of publication, please check with your GMC dealer for complete details. General Motors of Canada Company reserves the right to lengthen or shorten the model year for any product, for any reason, or to start and end model years at different times.

A WORD ABOUT THIS ASSEMBLY GMC vehicles are equipped with engines and components produced and assembled by different operating units of General Motors, its subsidiaries and suppliers to GM worldwide. We sometimes find it necessary to produce GMC vehicles with different or differently sourced components than originally scheduled. Since some options may be unavailable when your vehicle is assembled, we suggest that you verify that your vehicle includes the equipment you ordered or, if there are changes, that they are acceptable to you.

TRADEMARKS ©2020 General Motors of Canada Company. All rights reserved. The marks appearing in this brochure, including but not limited to: General Motors, GM, GMC, Acadia and their respective logos, emblems, slogans and vehicle model names and body designs; and other marks are trademarks of General Motors and/or General Motors of Canada Company, its subsidiaries, affiliates or licensors. OnStar® and the OnStar emblem are registered trademarks of OnStar, LLC. Bluetooth is a registered trademark of Bluetooth SIG, Inc. Bose is a registered trademark of Bose Corporation. Apple CarPlay is a trademark of Apple, Inc. Apple, Siri and iTunes are trademarks of Apple, Inc., registered in the U.S. and other countries. Android, Android Auto and Google Play are trademarks of Google LLC.

¹Whichever comes first. ²Limit of two (2) Lube-Oil-Filter services during the program period. Fluid top-offs, inspections, tire rotations, wheel alignments and balancing, etc., are not covered. Additional conditions and limitations apply. See participating dealer for details. ³Conditions apply. See Warranty Booklet for details. ⁴Conditions apply. See Owner's Manual for details. ⁵Conditions and limitations apply. ⁶Please work with your dealer to select the plan that is suitable for your driving needs. Dealers are free to set their own prices. ⁷Subject to eligibility. ⁸Program subject to change.

DRIVE THE CONVERSATION



GMCCANADA.CA

LIVE
LIKE A PRO

GMC
WE ARE PROFESSIONAL GRADE