

ALL-NEW SILVERADO HD 2020

CHEVROLET 



Silverado 3500 HD Crew Cab Long Bed LT 4x4 DRW
in Black with available Duramax® 6.6L V8 Turbo-
Diesel engine and Gooseneck/5th-Wheel Package.

THE STRONGEST, MOST CAPABLE SILVERADO HD EVER.

Everything we know about building trucks is found in the 2020 Chevrolet Silverado HD. New in so many ways, Silverado HD is purpose-built to handle your biggest jobs, with strength to spare. Five distinct trim levels with big, bold style. Powertrain options that don't know the meaning of the word *quit*. Advanced trailering technologies designed to make a long day of towing easy. And the hardest-working pickup bed in the business. The bottom line: capability with absolutely no compromise.

FIND NEW ROADS™



THE BEST HEAVY-DUTY PICKUP FOR THE LONG HAUL.

J.D. Power has named Silverado HD as the highest ranked large heavy-duty pickup, in the U.S., in both initial quality (based on 2019 vehicles) and long-term quality (based on 2016 vehicles)! Real truck owners have spoken: Silverado HD comes ready to work and keeps working hard for years to come.

1 The Chevrolet Silverado HD received the lowest rate of reported problems among large heavy-duty pickups in the J.D. Power 2019 U.S. Initial Quality (IQS) and Vehicle Dependability (VDS) Studies. IQS measures new U.S. vehicle owners' experience with their own vehicle after 90 days of ownership. VDS measures long-term quality for the original U.S. owners' experience with their 2016 model year vehicle during the 12 months prior to the survey. For J.D. Power 2019 award information, visit jdpower.com/awards.

EXTERIOR DESIGN

LOOKS STRONG. DRIVES STRONG.

A bold, sculpted form, chiselled features and a commanding stance give Silverado HD a powerful look that sets it apart from every other truck on the road.

This all-new pickup has a **higher cab position**, standard trairling mirrors and available advanced camera technology to help increase your ability to see around the truck.

The **standard trairling mirrors** are larger and more aerodynamic than before. They are mounted to the doors for improved sight lines.

Integrated BedSteps are located behind the cab and forward of the rear wheels to provide access to the front of the cargo bed. The **CornerSteps** in the rear bumper are also larger than ever.

The **optimized cargo bed rail height** allows ample clearance for fifth-wheel and gooseneck trailers.



Silverado 2500 HD Crew Cab Standard Bed High Country 4x4 in Iridescent Pearl Tricoat (extra-cost colour) with available Duramax 6.6L V8 Turbo-Diesel engine.



Our new **Durabed** combines a roll-formed high-strength steel bed floor, loads of cargo volume, and 12 standard fixed tie-downs and 9 available removable tie-downs.

An available **power up/down tailgate** lets you raise or lower the tailgate using the key fob, a button in the cabin or a touchpad on the gate itself.

The **Diesel Exhaust Fluid (DEF)** fill inlet (if equipped) is now conveniently located next to the fuel inlet inside the fuel door.

The **engine block heater outlet** has been relocated to the front fascia, providing easy access and a clean look.

This new HD is bigger, taller and wider than ever before, and it's still the most **aerodynamically efficient** heavy-duty truck in Chevrolet history.

Silverado 3500 HD Crew Cab Long Bed LT DRW in Black with available Duramax 6.6L V8 Turbo-Diesel engine, True North Edition and 6-in. rectangular chrome assist steps.

MODELS

WORK TRUCK

Silverado HD Work Truck (WT) proudly lives up to the Chevrolet name and bowtie emblem on its grille.

With two engine choices, a fully boxed frame and 12 cargo tie-downs, this pickup is always ready to work. And with standard vertical trairling mirrors, a Rear Vision Camera¹ and Hitch Guidance¹; a Trailering Package with a conventional hitch and 7-pin connector, and lowered bed walls for easier fifth-wheel towing, you're always ready to tow.

CUSTOM

Work hard, and look sharp doing it.

Custom is a new Silverado 2500 HD model that features a body-colour grille bar, high-gloss Black bumpers, LED signature tail lamps and 20-in. machined-aluminum wheels, plus power-adjustable vertical trairling mirrors with heated upper glass.

Top: Silverado 2500 HD Regular Cab Long Bed WT 4x4 in Summit White with available features.

Bottom: Silverado 2500 HD Crew Cab Standard Bed Custom 4x4 in Red Hot with available features.



¹ Read the vehicle Owner's Manual for important feature limitations and information.

MODELS (CONTINUED)

LT

Make a bold statement. Silverado HD LT combines iconic looks with classic capability.

The chrome bumpers and centre grille bar complement the 17-in. machined-aluminum wheels and body-colour door handles. An EZ-Lift tailgate and integrated trailer brake controller are standard. Inside, you'll find an 8-in. diagonal colour touch-screen display and enhanced Driver Information Centre.

LTZ

Silverado LTZ stands apart, with premium style to match its hard-working substance.

A prominent chrome grille bar, chrome mirror caps, chrome door handles, and chrome-accented grille inserts are paired with LED headlamps, tail lamps, daytime running lamps and fog lamps.

The Advanced Trailering System is standard, as are power-extending and power-folding mirrors, an Autotrac 2-speed transfer case (4x4 models), a power lock and release EZ-Lift tailgate, Keyless Open and Start, and perforated leather-appointed heated front seating.

Top: Silverado 2500 HD Crew Cab Standard Bed LT 4x4 in Shadow Grey Metallic (extra-cost colour) with available Duramax 6.6L V8 Turbo-Diesel engine, additional available features and dealer-installed 6-in. rectangular Black assist steps from Chevrolet Accessories!

Bottom: Silverado 2500 HD Crew Cab Standard Bed LTZ 4x4 in Northsky Blue Metallic (extra-cost colour) with available Duramax 6.6L V8 Turbo-Diesel engine, additional available features and dealer-installed 4-in. round chrome assist steps from Chevrolet Accessories!



MODELS (CONTINUED)

HIGH COUNTRY

Luxury never worked harder. This is the ultimate Silverado HD.

The chrome and bronze grille features the iconic Chevrolet bowtie emblem front and centre. Chrome assist steps, 20-in. polished-aluminum wheels (single rear wheel models), a power up/down tailgate, LED cargo area lighting, a Chevytec spray-on bedliner and several advanced safety features are all standard.

Inside, heated and ventilated perforated leather-appointed front bucket seats, heated rear outboard seats and a Bose sound system provide the comforts of home. At the same time, a Chevrolet Infotainment 3 Premium system¹ with Navigation² and an 8-in. diagonal Driver Information Centre bring the technology in High Country to another level.

Silverado 2500 HD Crew Cab Standard Bed High Country 4x4 in Oxford Brown Metallic (extra-cost colour) with available Duramax 6.6L V8 Turbo-Diesel engine and other available features.



¹ Chevrolet Infotainment System functionality varies by model. Full functionality requires compatible Bluetooth and smartphone, and USB connectivity for some devices. Data plan rates may apply. ² Detailed map coverage is available for most major urban areas of the United States and for certain metropolitan areas of Canada (Vancouver, Calgary, Edmonton, Winnipeg, Windsor, London, Toronto, Ottawa, Montreal, Quebec City and Halifax). Coverage is significantly limited outside these areas.

POWERTRAINS

6.6L V8 GAS ENGINE WITH 6-SPEED TRANSMISSION

464 LB.-FT. OF TORQUE

401 HORSEPOWER

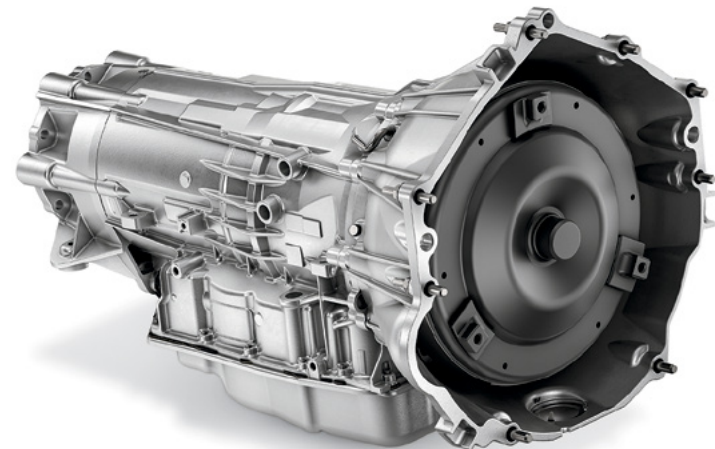
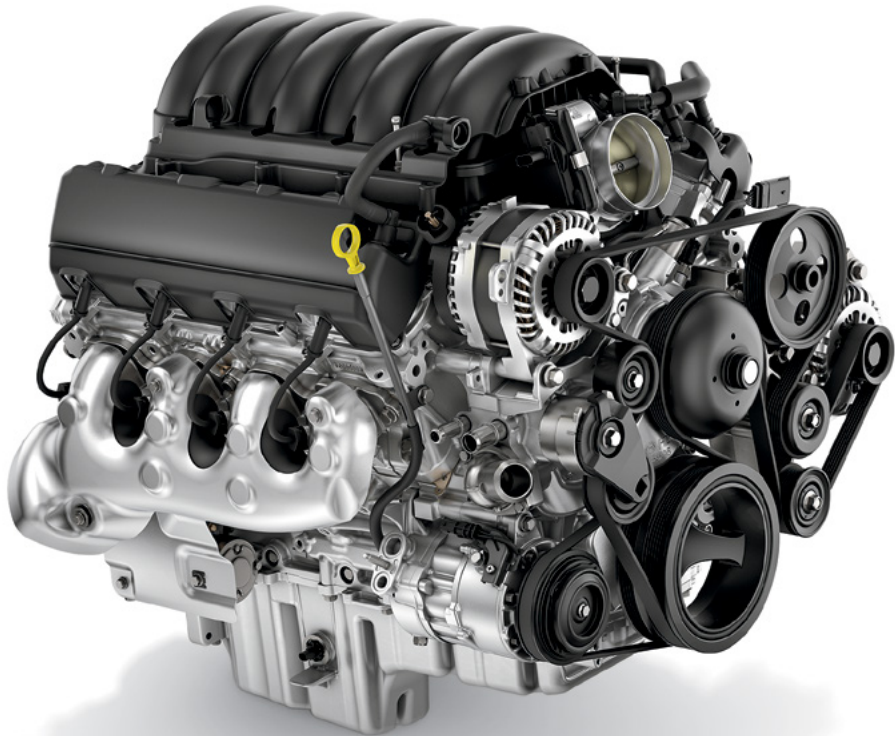
17,370 LB. (7879 KG) MAXIMUM
TRAILERING WEIGHT^{1,2}

The V8 engine – it's in our DNA. With a 22% increase over the previous generation, the **all-new 6.6L V8 gas engine** offers 464 lb.-ft. of torque. Direct Injection and Variable Valve Timing help make this powerplant both more capable and more efficient. And it's a durable performer, thanks to a cast iron cylinder block, deep-skirt design and cross-bolted main bearing caps.

Both gas and diesel engines feature an **improved air induction system** that receives cool air through the top opening of the grille. A functional hood scoop provides a second source to satisfy the intake needs of the Duramax Diesel.

Dual alternators are available on Silverado HD with either engine, making it easy to power the accessories you need when you're on the job. This is the first time this feature has been offered on a Chevrolet gas engine.

¹ Requires Silverado 2500 HD Regular Cab 2WD and available gooseneck or fifth-wheel hitch. ² Before you buy a vehicle or use it for trailering, carefully review the Trailering section of the Owner's Manual. The weight of passengers, cargo and options or accessories may reduce the amount you can tow.



DURAMAX 6.6L V8 TURBO-DIESEL ENGINE WITH ALLISON 10-SPEED TRANSMISSION

910 LB.-FT. OF TORQUE

445 HORSEPOWER

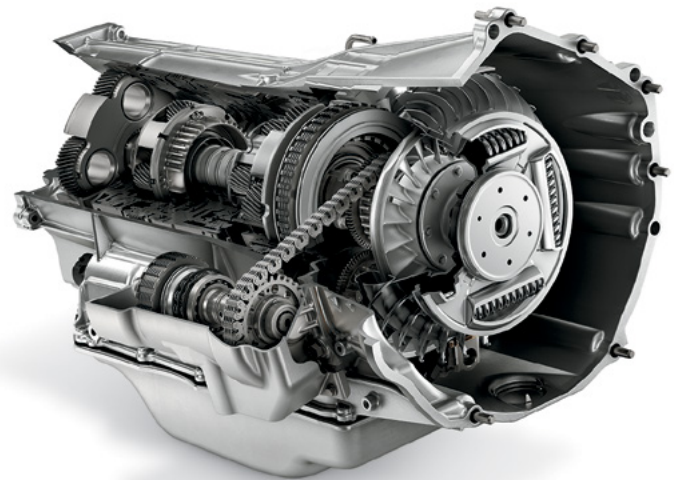
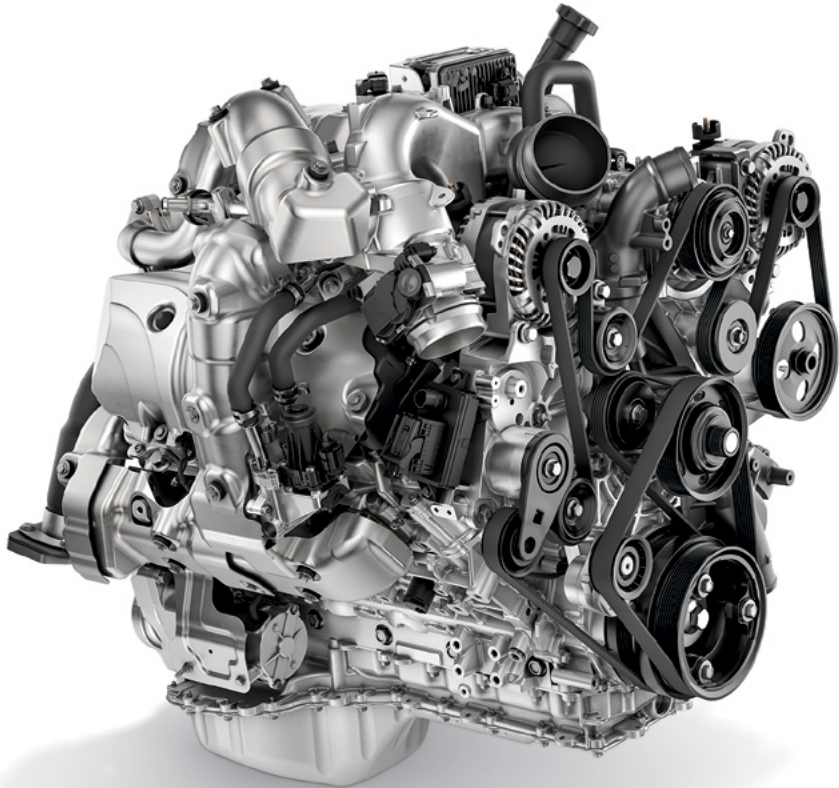
35,500 LB. (16,103 KG) MAXIMUM
TRAILERING WEIGHT^{1, 2}

The available legendary Duramax 6.6L V8 Turbo-Diesel engine is paired with an all-new Allison® 10-speed automatic transmission, which was designed to deliver all **910 lb.-ft. of torque in first gear** on 3500 HD models.

Diesel Engine After-Run is designed to help the engine cool down following heavy usage. If the vehicle is shut off while the engine is too hot, it will immediately restart, allowing the engine fan to run and coolant to flow.

On 3500 HD, an available chain-driven **Power Take-Off (PTO)** feature is offered straight from the factory on the Allison® transmission, so you can transfer power from the engine to aftermarket equipment, such as a generator or hydraulic pump³.

¹ Before you buy a vehicle or use it for trailering, carefully review the Trailering section of the Owner's Manual. The weight of passengers, cargo and options or accessories may reduce the amount you can tow. ² Requires Silverado 3500 HD Regular Cab WT 2WD DRW with available gooseneck hitch. ³ Equipment from independent suppliers: See An Important Note About Alterations And Warranties on the inside back cover of this brochure.



CAPABLE OF JUST ABOUT ANYTHING.

Bring it on. The All-New Silverado HD can handle just about anything you throw its way.

We improved or upgraded virtually every element to deliver our best heavy-duty truck ever. To make that happen, we used **seven different types of steel**, with each gauge chosen to maximize capability. That means we used the right material in the right place to help do the right job.

Everything about this truck has been optimized for durability and dependability to help ensure you're driving the strongest, most capable Silverado HD ever.



The chassis is **20% stiffer** than the previous generation. To achieve that target, we used a combination of high-strength and ultra-high-strength steel throughout the cab and frame.

Silverado HD features a **fully boxed ladder-type frame** with nine high-strength steel cross members, making it stronger and stiffer to deliver a more confident towing experience and increased load-hauling capability.

Increased capability required enhanced cooling. On models with the available Duramax 6.6L V8 Turbo-Diesel engine, you'll find a massive **28-in. cooling fan** to meet the higher cooling demands that come with pulling more weight.

The new **integral front-end structure** provides notable advantages by reducing mass and improving ride and handling. It also helps manage noise and vibration and crash impact forces.

Every Silverado HD features **larger axles** to handle larger loads. In fact, the ring gear in the rear axle on 3500 HD models with the available Duramax 6.6L V8 engine measures a full 12 in. (305 mm) to help deliver all 910 lb.-ft. of torque in first gear.

All-new **larger-diameter front and rear prop shafts** and upgraded U-joints have been optimized to handle high torque output and improve durability.

The **Electric Parking Brake** introduces two major benefits: Steep Grade Apply, which engages on grades greater than 15% when the driver shifts into Park for additional brake support, and Park Grade Hold Assist, which enhances Hill Hold to help keep your truck firmly in place on inclines or declines of 8% or more. Both features keep the transmission linkage from binding so you can more easily shift into gear after being parked on a steep grade.

Silverado 2500 HD Crew Cab Standard Bed LTZ 4x4 in Cajun Red Tintcoat (extra-cost colour) with available Duramax 6.6L V8 Turbo-Diesel engine, additional available features and dealer-installed 4-in. tubular chrome assist steps from Chevrolet Accessories!



DRIVING DYNAMICS

An Autotrac 2-speed transfer case is available and offers four drive modes: 2 High, 4 High, 4 Low and 4 Auto mode that automatically adjusts power sent to the front and rear axles for improved traction.

The long wheelbase, stiff frame and shear-style body mounts combine to help provide a **smooth ride** with more control. The short/long arm suspension offers a proven formula for the best possible ride and handling benefits.

Delivering enhanced control on the highway and in the parking lot, **Digital Variable Steering Assist** provides stability at high speeds and manoeuvrability at low speeds. Standard on Silverado HD LTZ and High Country.

Brake enhancements include Hill Start Assist, which provides extra time to start uphill from a stop. There's also a new Brake Pad Life Monitor and an Electric Parking Brake with Steep Grade Apply and Park Grade Hold Assist.

Silverado 2500 HD Crew Cab Standard Bed LTZ 4x4 in Cajun Red Tintcoat (extra-cost colour) with available Duramax 6.6L V8 Turbo-Diesel engine, additional available features and dealer-installed 4-in. tubular chrome assist steps from Chevrolet Accessories!

**COMMAND THE ROAD,
EVEN WHEN THERE ISN'T ONE.**




The available **Z71 Off-Road Package** provides legendary capability and includes all-terrain tires, an off-road tuned suspension featuring twin-tube shocks, an underbody skid plate package and Hill Descent Control.

Hill Descent Control uses the Anti-lock Braking System to help provide a controlled descent on challenging terrain. When activated, the system works without the driver pressing the brake pedal. The driver must be ready to take over braking at any time.

Silverado HD comes with a standard **automatic locking rear differential**, which reacts in milliseconds to low-traction situations, providing equal power to both rear wheels for improved traction on challenging terrain.

¹ Accessory warranty coverage, if any, varies. See your GM Warranty Booklet or GM dealer for details.



Silverado 2500 HD Crew Cab Standard Bed Custom 4x4 in Silver Ice Metallic with available features, dealer-installed 4-in. tubular Black assist steps from Chevrolet Accessories and snow plow upfit from an independent supplier!¹

JOBSITE READY

LET'S GET TO WORK.

Silverado HD is on the job as soon as it leaves the factory floor. It starts with powerful engines, a fully boxed frame and **high-strength steel** in all the right places. But there's so much more.

An available chain-driven **Power Take-Off (PTO)** package is offered on Silverado HD with the available Duramax 6.6L V8 and Allison® transmission so you can transfer power from the engine to another piece of equipment such as a generator, pump or hydraulic crane!

Vertical trairling mirrors are standard on all trims, with an available power extension feature and perimeter lighting for excellent visibility.

Snow plow installation is more intuitive and easier than ever, with a new removable skid plate and front air dam that eliminate the need to drill holes in the bumper!¹

A relocated, weather-resistant **engine block heater outlet** in the lower front fascia provides convenience and can save time when connecting, even with a plow installed. And it looks better too.

¹ Equipment from independent suppliers: See An Important Note About Alterations And Warranties on the Complete Care page.

CAMERA TECHNOLOGIES

SEEING IS BELIEVING.

The All-New Silverado HD offers a **Technology Package** that provides multiple camera views – up to 15 total views with available accessory cameras – to help make it easier to hitch a trailer and tow with confidence.

Views enabled by these cameras are easily accessed by selecting the Camera App on the touch-screen display. Conveniently, select views can be launched through the **available Advanced Trailing System**.

Some camera views require available accessory camera and installation. Not compatible with all trailers. See your dealer for details. Driver assistance features are no substitute for the driver's responsibility to operate the vehicle in a safe manner. The driver should remain attentive to traffic, surroundings and road conditions at all times. Visibility, weather and road conditions may affect feature performance. Read the vehicle Owner's Manual for more important feature limitations and information.



Transparent Trailer View Helps the driver to virtually “see through” a conventional hitched box or camping trailer.



Hitch View Provides a close-up view of the receiver hitch to help with alignment when connecting to a trailer.



Bed View Allows you to see inside the cargo bed to help with fifth-wheel or gooseneck hitching and to briefly check on cargo.

Some camera views require available accessory camera and installation. Not compatible with all trailers. See your dealer for details. Driver assistance features are no substitute for the driver's responsibility to operate the vehicle in a safe manner. The driver should remain attentive to traffic, surroundings and road conditions at all times. Visibility, weather and road conditions may affect feature performance. Read the vehicle Owner's Manual for more important feature limitations and information.



Front Camera View Displays front view with available guidelines to assist with parking and tight manoeuvres.



Rear Camera View Displays rear view to assist with parking and tight manoeuvres.



Surround View Gives a top-down bird's-eye view of the truck's surroundings.



Front Top-Down View Provides a top-down view of the hood, bumper and front tires for tight manoeuvres in parking lots or along curbs.



Rear Top-Down View Shows the clearance between the truck bed and nearby objects.



Bowl View Provides a rear-facing 3-D surround view, useful for low-speed backing manoeuvres.

Some camera views require available accessory camera and installation. Not compatible with all trailers. See your dealer for details. Driver assistance features are no substitute for the driver's responsibility to operate the vehicle in a safe manner. The driver should remain attentive to traffic, surroundings and road conditions at all times. Visibility, weather and road conditions may affect feature performance. Read the vehicle Owner's Manual for more important feature limitations and information.



Front Side View Shows the position of the front tires when parking and during tight manoeuvres.



Rear Side View Provides a line of sight down each side of the truck and trailer to provide added views.



Rear Trailer View Uses an available accessory camera that can be installed to show vehicles or objects behind the trailer.



Inside Trailer View Allows the driver to monitor trailer contents or cargo using an available accessory camera that can be installed in the trailer.



Pic-In-Pic Side View Combines two views – the Rear Side View and the Rear Trailer View. Requires available accessory camera.



Rear Camera Mirror An available dual-function camera-based rear-view mirror that provides a wider, less-obstructed field of view than a traditional rear-view mirror.

Silverado 2500 HD Crew Cab Standard Bed
High Country 4x4 in Shadow Grey Metallic
(extra-cost colour) with available
Duramax 6.6L V8 Turbo-Diesel engine.



Silverado 3500 HD Crew Cab Long Bed LT DRW in Black with available Duramax 6.6L V8 Turbo-Diesel engine, Gooseneck/5th-Wheel Package and additional available features.



TRAILERING

CONFIDENCE FOR THE LONG HAUL.

Silverado 3500 HD with the available Duramax 6.6L V8 Turbo-Diesel engine tows up to 35,500 lb. (16,103 kg)^{1,2} – a 52% increase over the previous generation. Here's something else. Every Silverado HD Dually paired with

the available Duramax 6.6L V8 can pull over 31,000 lb. (14,000 kg)²

The available Advanced Trailering System features an in-vehicle app³ that offers customized trailer profiles.

Other features include predeparture checklists, trailer lighting diagnostics, trailer tire pressure/temperature monitoring⁴ and the ability to create and sync trailer profiles with the myChevrolet App⁵

Silverado HD doesn't just provide capability – it delivers confidence every time you hitch up.

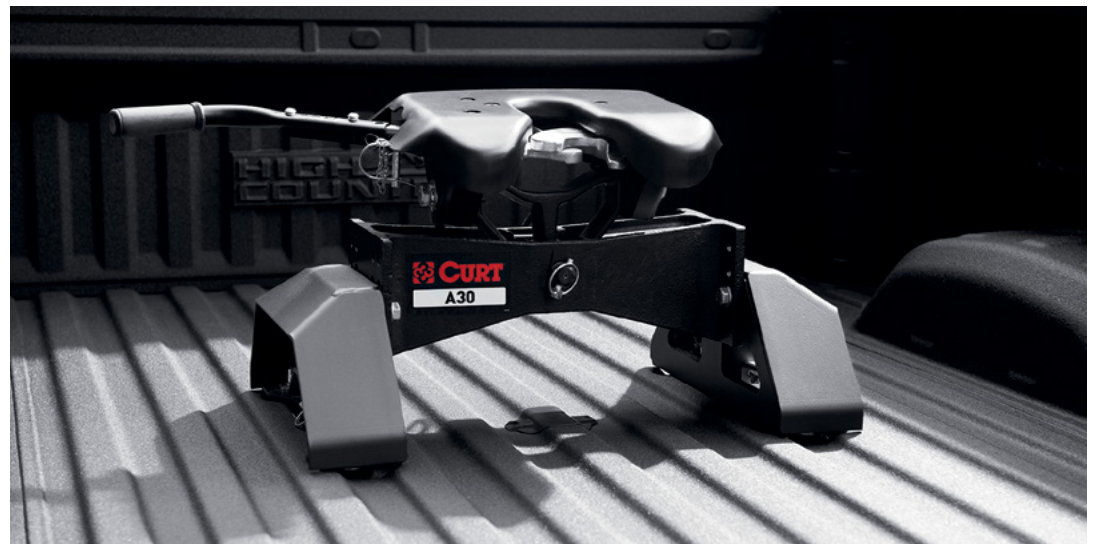
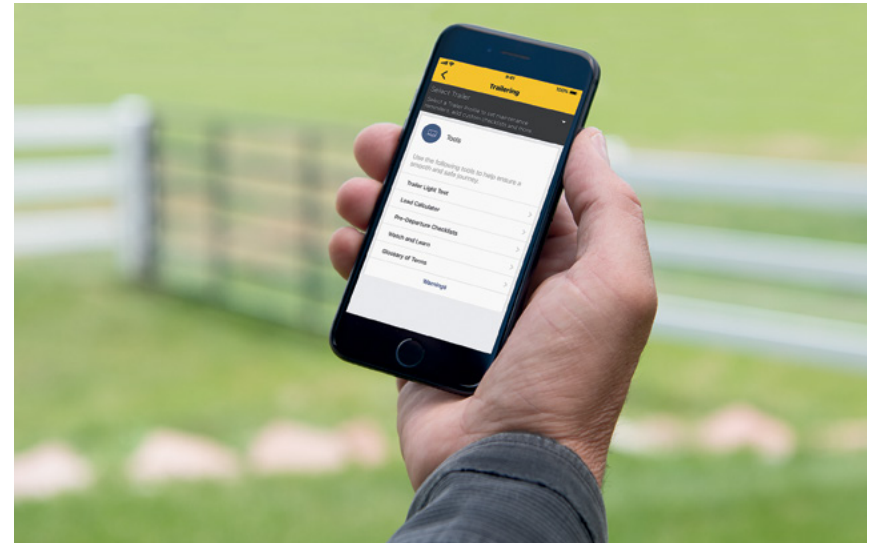
¹ Requires Silverado 3500 HD Regular Cab WT 2WD DRW with available Duramax 6.6L V8 Turbo-Diesel engine and gooseneck hitch. ² Before you buy a vehicle or use it for trailering, carefully review the Trailering section of the Owner's Manual. The weight of passengers, cargo and options or accessories may reduce the amount you can tow. ³ Available on select Silverado models with compatible hardware. App functionality and features vary with vehicle equipment and trim level. Data connection may be required. Some features require active service plan and working electrical system. Terms and limitations apply. ⁴ Does not monitor spare tire. ⁵ Available on select Apple and Android devices. Service availability, features and functionality are subject to limitations and vary by model and/or vehicle configuration, device and the plan in which you are enrolled. Device data connection required. Visit onstar.ca for more details.

The Advanced Trailing System features an in-vehicle app¹ that offers customized trailer profiles. Standard on LTZ and High Country, available on LT.

myChevrolet App with Trailing² syncs with the available Advanced Trailing System.

Vertical trailing mirrors standard on every Silverado HD.

Fifth-Wheel Trailing Hitch available from Chevrolet Accessories³



¹ Available on select Silverado models with compatible hardware. App functionality and features vary with vehicle equipment and trim level. Data connection may be required. Some features require active service plan and working electrical system. Terms and limitations apply. ² Device data connection required. Available on select Apple and Android devices. Some features require connected vehicle services trial or active plan and working electrical system. Service availability, features and functionality vary by model and/or vehicle configuration. Visit onstar.ca for details and limitations. ³ Accessory warranty coverage, if any, varies. See your GM Warranty Booklet or GM dealer for details.



DURABED

THIS BED NEVER RESTS.

- The Standard Bed features up to 1970 L (69.6 cu. ft.)¹ of cargo volume, while the Long Bed offers up to 2365 L (83.5 cu. ft.)¹
- 12 standard fixed tie-downs all rated up to 500 lb. (227 kg) per corner in any direction. Nine removable accessory tie-downs available.
- Integrated BedSteps for easy access to the front of the bed, even with a fifth-wheel or gooseneck trailer hitched.
- Optimized cargo bed rail height to allow clearance for fifth-wheel and gooseneck trailers.
- Lowered bed floor for a better lift-in height at the tailgate.

¹ Cargo and load capacity limited by weight and distribution.

Available LED cargo area lighting and perimeter lighting.

Power up/down tailgate standard on High Country and available on LTZ.

Larger CornerStep rear bumper.

Available household-type bed-mounted 120-volt AC outlet.



Silverado 2500 HD Crew Cab Standard Bed LT 4x4
in Northsky Blue Metallic (extra-cost colour) with
available Duramax 6.6L V8 Turbo-Diesel engine
and additional available features.

DURABED

ONE WORKER THAT NEVER NEEDS A DAY OFF.

Every Silverado HD features Durabed, with a roll-formed high-strength steel floor that's stronger, lighter and more durable than a traditional stamped steel floor. And while the bed floor is lighter than ever, it's also more puncture- and dent-resistant. Plus, the bed is longer, deeper and wider than the previous generation.

On Standard Bed models, we increased the maximum bed width by nearly 7 in. (178 mm) and length by 3 in. (76 mm).

For drivers who haul the biggest loads, the available factory-installed **Gooseneck/5th-Wheel Package** includes a frame-mounted hitch platform ready to accept a fifth-wheel hitch or gooseneck ball, a bed-mounted trailer wiring connector, a Chevytec spray-on bedliner, and all the necessary bed and bedliner holes stamped and capped.





INTERIOR DESIGN

YOUR HOME ON THE ROAD.

The larger dimensions of the All-New Silverado HD mean more interior space. Front seating has been raised by 1.5 in. (38 mm) for a more commanding view. Rear passengers will enjoy more legroom and shoulder room than before.

Inside every Silverado HD, trim colours, materials and finishes were selected to match the personality of the model. Nothing was overlooked, including an attention to **comfort, durability and quality.**

To bring you a **quiet cabin**, we included acoustic panels in the rear seatback, dissipative carpet technology that helps absorb sound and a high-density interior front-of-dash mat on diesel models. All that technology is sure to enhance your enjoyment of the available Bose premium 7-speaker sound system.

New **rear-seat heating and cooling vents** in Double Cab and Crew Cab models keep rear passengers in controlled comfort.

Silverado 2500 HD Crew Cab High Country interior in Jet Black with UMBER accents and available features.

CHEVROLET



Silverado 2500 HD Crew Cab High Country interior in Jet Black with Umber accents and available features.



INTERIOR DESIGN

SMART AND STRONG.

The perfect truck doesn't just have to work – it has to work for you.

The **driver-focused functionality** of Silverado HD is evident in large buttons and knobs that are easy to adjust, even with gloved hands.

Upper and lower gloveboxes accommodate important items, and open compartments on either side of the centre console are ideal for flashlights or even a small tablet. An available lighted centre console storage compartment below the armrest doubles as a filing cabinet.

Available **second-row storage solutions** include rear outboard seatback compartments to keep small laptops out of sight, as well as a storage bin below the rear seat that can hold long gear like an ice scraper.





TECHNOLOGY

WORK YOUR CONNECTIONS.

- Available 15-in. diagonal multi-colour Head-Up Display projects select critical data – including some available safety information – onto the windshield so you can keep your eyes on the road.
- The new Chevrolet Infotainment 3 system¹ is intuitive and easy to use, with a simplified 7- or 8-in. diagonal colour touch-screen display.
- The available Chevrolet Infotainment 3 Premium system¹ with Navigation² offers easy destination input and the ability to pinch, zoom and drag map screens just like on your smartphone.
- SiriusXM[®] with 360L³ offers an enhanced listening experience, with unique channels, more relevant personalized recommendations, visually appealing screens and more ways to discover content. Standard on LTZ and High Country, available on LT.

¹ Chevrolet Infotainment System functionality varies by model. Full functionality requires compatible Bluetooth and smartphone, and USB connectivity for some devices. Data plan rates may apply. ² Detailed map coverage is available for most major urban areas of the United States and for certain metropolitan areas of Canada (Vancouver, Calgary, Edmonton, Winnipeg, Windsor, London, Toronto, Ottawa, Montreal, Quebec City and Halifax). Coverage is significantly limited outside these areas. ³ Available in 10 Canadian provinces, 3 territories and the 48 contiguous United States. Subscription sold separately after trial period. If you decide to continue your service at the end of your trial subscription, the plan you choose will automatically renew and bill at then-current rates until you call 1-888-539-7474 to cancel. Other fees and taxes will apply. All fees and programming subject to change. See the Customer Agreement for complete terms at siriusxm.ca/terms.

Next-generation wireless charging¹ pad standard on High Country and available on LTZ.

A Driver Information Centre is standard on all models; High Country shown.

Apple CarPlay^{®2} support for your iPhone[®] (shown) and Android Auto^{™3} compatibility.

A USB port⁴ is standard, and up to 6 USB ports⁴ are available, depending on the model.



¹ The system wirelessly charges one compatible mobile device. Some devices require an adaptor or back cover. See myChevrolet.ca for more information. ² Vehicle user interface is a product of Apple and its terms and privacy statements apply. Requires compatible iPhone and data plan rates apply. ³ Vehicle user interface is a product of Google and its terms and privacy statements apply. Requires the Android Auto app on Google Play and an Android compatible smartphone running Android 5.0 or higher. Data plan rates apply. ⁴ Not compatible with all devices.

SAFETY AND DRIVER ASSISTANCE

A COMMITMENT TO SAFETY IS ONE OF OUR GREATEST STRENGTHS.



Automatic Emergency Braking. At speeds below 80 km/h, if an imminent front-end collision is detected with a vehicle you are following, the feature can alert you and can automatically apply hard emergency braking or enhance driver hard braking. Available on LTZ and High Country.



Following Distance Indicator and Forward Collision Alert. These features monitor how close your vehicle is to the detected vehicle in front of you and can alert you to a potential crash. Available on LTZ and High Country.



Lane Departure Warning. This camera-based system reads traffic lane markings when identifiable and provides alerts if you unintentionally drift out of your lane without using a turn signal. Available on LTZ and High Country.



Lane Change Alert with Side Blind Zone Alert. This feature can provide side mirror alerts when it detects fast-approaching vehicles in adjacent lanes as well as moving vehicles in the side mirror blind zones. Standard on High Country; available on WT, LT and LTZ.



Rear Cross Traffic Alert. This feature can alert you to detected vehicles crossing behind your Silverado HD when backing up. Standard on High Country; available on WT, LT and LTZ.



Rear Vision Camera. When travelling in Reverse at low speeds, this feature helps provide a view of the area immediately behind your Silverado HD. Standard on all models. A high-definition version is included on LTZ and High Country, and available on LT.



Front and Rear Park Assist. At low speeds, this feature can provide distance alerts to nearby detected objects to help you park. Standard on High Country; available on WT, LT and LTZ.



IntelliBeam® headlamps. When oncoming headlamps are sensed or when tail lamps are detected, this feature intuitively adjusts between low and high beams. Available on LTZ and High Country.



Safety Alert Seat. This feature gives you the option of getting directional vibration pulses from the driver seat instead of beeps to indicate the direction of potential threats. Available on LTZ and High Country.

Safety starts with you. Safety or driver assistance features are no substitute for the driver's responsibility to operate the vehicle in a safe manner. The driver should remain attentive to traffic, surroundings and road conditions at all times. Visibility, weather and road conditions may affect feature performance. Read the vehicle Owner's Manual for more important feature limitations and information.

ACCESSORIES



Dealer-installed Centre Console Lockable Storage Box from Chevrolet Accessories!



Dealer-installed Illuminated Door Sill Plate and Premium All-Weather Floor Liners from Chevrolet Accessories!



Dealer-installed Soft Roll-Up Tonneau Cover from Chevrolet Accessories!

Silverado 2500 HD Crew Cab Standard Bed LTZ 4x4
with available dealer-installed 20-in. Chrome Wheels,
6-in. Rectangular Assist Steps, Chrome Recovery
Hooks; Dark Essentials Package and Chrome Hood
Induction Assembly from Chevrolet Accessories²



¹ To avoid the risk of injury, never use recovery hooks to tow a vehicle. See the Owner's Manual for more information. ² Accessory warranty coverage, if any, varies. See your GM Warranty Booklet or GM dealer for details.

EXTERIOR COLOURS



G1W – Iridescent Pearl Tricoat^{1,2}



G7C – Red Hot³



GA0 – Northsky Blue Metallic¹



GAN – Silver Ice Metallic



GAZ – Summit White



GBA – Black



GJ1 – Shadow Grey Metallic¹



GNK – Oxford Brown Metallic¹



GPJ – Cajun Red Tintcoat^{1,2}

WHEELS



17" painted-steel wheels (PYN)
Standard on 2500 HD WT



17" machined-aluminum wheels (PYQ)
Standard on 2500 HD LT
Available on 2500 HD WT



17" painted-steel wheels (PYW)
Standard on 3500 HD WT DRW



17" painted-steel wheels
with chrome trim and caps (PYW with P06)
Standard on 3500 HD LT and LTZ DRW
Available on 3500 HD WT DRW



17" forged polished-aluminum wheels (RS7)
Standard on 3500 HD High Country DRW
Available on 3500 HD LTZ DRW



18" painted-steel wheels (PYT)
Standard on 3500 HD WT SRW
Available on 2500 HD WT and LT and 3500 HD LT SRW



18" machined-aluminum wheels
with Silver-painted accents (PYV)
Standard on 2500 HD LTZ and 3500 HD LT and LTZ SRW
Available on 2500 HD WT¹ and LT and 3500 HD WT SRW



20" 10-spoke machined-aluminum wheels
with high-gloss Black-painted accents (RQ9)
Standard on 2500 HD Custom
Available on 2500 HD LT and 3500 HD LT SRW



20" 6-spoke polished-aluminum wheels (RTH)
Available on 2500 HD LTZ and 3500 HD LTZ SRW



20" 16-spoke polished-aluminum wheels (PYS)
Standard on 2500 HD High Country
and 3500 HD High Country SRW

¹ Requires available Alaskan Snow Plow Special Edition.

ENGINE SPECIFICATIONS



6.6L V8 GAS Standard on all 2500 HD and 3500 HD models.

Variable Valve Timing (VVT) and Direct Injection

6-speed heavy-duty automatic transmission

401 hp @ 5200 rpm

464 lb.-ft. of torque @ 4000 rpm

Displacement: 6600 cc (403 cu. in.)

Bore and stroke: 103.25 mm x 98 mm

Compression ratio: 10.75:1

Alternator: 170 amps



DURAMAX 6.6L V8 TURBO-DIESEL Available on 2500 HD and 3500 HD models.

Direct Injection with high-pressure common rail

Allison® 10-speed automatic transmission

445 hp @ 2800 rpm

910 lb.-ft. of torque @ 1600 rpm

Displacement: 6619 cc (403 cu. in.)

Bore and stroke: 103 mm x 99 mm

Compression ratio: 16.0:1

Alternator: 220 amps

PAYLOAD AND TRAILER WEIGHT RATINGS

MODEL	ENGINE	WHEEL SIZE	GVWR lb. (kg) ¹	MAX. PAYLOAD lb. (kg) ²	MAX. CONVENTIONAL TOWING lb. (kg) ³	MAX. GOOSENECK/5TH-WHEEL TOWING lb. (kg) ³
2500 HD REGULAR CAB						
Long Bed 2WD	6.6L V8 gas	17"/18"	9900 (4490)	3757 (1704)	14,500 (6577)	17,370 (7879)
	6.6L V8 gas	18"/20"	10,150 (4604)	3979 (1805)	14,500 (6577)	17,340 (7865)
	Duramax 6.6L V8	17"	10,550 (4763)	3544 (1608)	14,500 (6577)	18,510 (8396)
	Duramax 6.6L V8	18"/20"	10,750 (4876)	3715 (1685)	14,500 (6577)	18,480 (8382)
Long Bed 4x4	6.6L V8 gas	17"/18"	9900 (4490)	3444 (1562)	14,500 (6577)	17,060 (7738)
	6.6L V8 gas	17"	10,250 (4649)	3794 (1721)	14,500 (6577)	17,060 (7738)
	6.6L V8 gas	18"/20"	10,450 (4740)	3965 (1799)	14,500 (6577)	17,030 (7725)
	Duramax 6.6L V8	17"	10,900 (4944)	3581 (1624)	14,500 (6577)	18,190 (8251)
	Duramax 6.6L V8	18"/20"	11,025 (5001)	3715 (1685)	14,500 (6577)	18,160 (8237)
2500 HD DOUBLE CAB						
Standard Bed 2WD	6.6L V8 gas	17"/18"	9900 (4490)	3441 (1561)	14,500 (6577)	17,050 (7734)
	6.6L V8 gas	17"	10,050 (4559)	3591 (1629)	14,500 (6577)	17,050 (7734)
	6.6L V8 gas	18"/20"	10,250 (4649)	3762 (1706)	14,500 (6577)	17,000 (7711)
	Duramax 6.6L V8	17"	10,700 (4854)	3390 (1538)	14,500 (6577)	18,200 (8255)
	Duramax 6.6L V8	18"/20"	10,900 (4944)	3561 (1615)	14,500 (6577)	18,170 (8242)
Standard Bed 4x4	6.6L V8 gas	17"	10,350 (4695)	3576 (1622)	14,500 (6577)	16,740 (7593)
	6.6L V8 gas	18"/20"	10,550 (4763)	3747 (1700)	14,500 (6577)	16,710 (7580)
	Duramax 6.6L V8	17"	11,000 (4990)	3375 (1531)	14,500 (6577)	17,890 (8115)
	Duramax 6.6L V8	18"/20"	11,200 (5080)	3546 (1608)	14,500 (6577)	17,860 (8101)
Long Bed 2WD	6.6L V8 gas	17"/18"	9900 (4490)	3320 (1506)	14,500 (6577)	16,930 (7679)
	6.6L V8 gas	17"	10,200 (4627)	3620 (1642)	14,500 (6577)	16,930 (7679)
	6.6L V8 gas	18"/20"	10,400 (4717)	3792 (1720)	14,500 (6577)	16,900 (7666)
	Duramax 6.6L V8	17"	10,900 (4944)	3424 (1553)	14,500 (6577)	18,040 (8183)
	Duramax 6.6L V8	18"/20"	11,100 (5035)	3595 (1631)	14,500 (6577)	18,010 (8169)
Long Bed 4x4	6.6L V8 gas	17"	10,500 (4763)	3633 (1662)	14,500 (6577)	16,650 (7552)
	6.6L V8 gas	18"/20"	10,750 (4876)	3854 (1748)	14,500 (6577)	16,620 (7539)
	Duramax 6.6L V8	17"	11,200 (5080)	3436 (1559)	14,500 (6577)	17,750 (8051)
	Duramax 6.6L V8	18"/20"	11,450 (5194)	3657 (1659)	14,500 (6577)	17,720 (8038)

¹ Maximum Gross Vehicle Weight Rating (GVWR). When properly equipped; includes weight of vehicle, passengers, cargo and equipment. ² These maximum payload ratings are intended for comparison purposes only. Before you buy a vehicle or use it to haul people or cargo, carefully review the Vehicle Loading section of the Owner's Manual and check the carrying capacity of your specific vehicle on the label on the inside of the driver door jamb. ³ Before you buy a vehicle or use it for trailering, carefully review the Trailering section of the Owner's Manual. The weight of passengers, cargo and options or accessories may reduce the amount you can tow.

PAYLOAD AND TRAILER WEIGHT RATINGS (CONTINUED)

MODEL	ENGINE	WHEEL SIZE	GVWR lb. (kg) ¹	MAX. PAYLOAD lb. (kg) ²	MAX. CONVENTIONAL TOWING lb. (kg) ³	MAX. GOOSENECK/5TH-WHEEL TOWING lb. (kg) ³
2500 HD CREW CAB						
Standard Bed 2WD	6.6L V8 gas	17"/18"	9900 (4490)	3329 (1510)	14,500 (6577)	16,940 (7684)
	6.6L V8 gas	17"	10,150 (4604)	3579 (1623)	14,500 (6577)	16,940 (7684)
	6.6L V8 gas	18"/20"	10,350 (4695)	3751 (1701)	14,500 (6577)	16,900 (7666)
	Duramax 6.6L V8	17"	10,800 (4899)	3332 (1511)	14,500 (6577)	18,050 (8187)
	Duramax 6.6L V8	18"/20"	11,050 (5012)	3553 (1612)	18,500 (8392)	18,500 (8392)
Standard Bed 4x4	6.6L V8 gas	17"	10,450 (4740)	3589 (1628)	14,500 (6577)	16,650 (7552)
	6.6L V8 gas	18"/20"	10,650 (4831)	3760 (1706)	14,500 (6577)	16,620 (7539)
	Duramax 6.6L V8	17"	11,150 (5058)	3391 (1538)	14,500 (6577)	17,750 (8051)
	Duramax 6.6L V8	18"/20"	11,350 (5148)	3563 (1616)	18,500 (8392)	18,500 (8392)
Long Bed 2WD	6.6L V8 gas	17"	10,300 (4672)	3629 (1646)	14,500 (6577)	16,840 (7639)
	6.6L V8 gas	18"/20"	10,500 (4763)	3800 (1724)	14,500 (6577)	16,810 (7625)
	Duramax 6.6L V8	17"	11,000 (4990)	3365 (1526)	14,500 (6577)	17,880 (8110)
Long Bed 4x4	Duramax 6.6L V8	18"/20"	11,200 (5080)	3536 (1604)	18,500 (8392)	18,500 (8392)
	6.6L V8 gas	17"	10,650 (4831)	3690 (1674)	14,500 (6577)	16,550 (7507)
	6.6L V8 gas	18"/20"	10,850 (4921)	3862 (1752)	14,500 (6577)	16,520 (7493)
	Duramax 6.6L V8	17"	11,350 (5148)	3426 (1554)	14,500 (6577)	17,590 (7979)
Duramax 6.6L V8	18"/20"	11,550 (5239)	3597 (1632)	18,500 (8392)	18,500 (8392)	

MODEL	ENGINE	WHEEL SIZE	GVWR lb. (kg) ¹	MAX. PAYLOAD lb. (kg) ²	MAX. CONVENTIONAL TOWING lb. (kg) ³	MAX. GOOSENECK/5TH-WHEEL TOWING lb. (kg) ³
3500 HD REGULAR CAB						
Long Bed 2WD SRW	6.6L V8 gas	18"/20"	10,750 (4876)	4481 (2033)	14,500 (6577)	17,200 (7802)
	Duramax 6.6L V8	18"/20"	11,500 (5216)	4215 (1912)	14,500 (6577)	21,500 (9752)
Long Bed 4x4 SRW	6.6L V8 gas	18"/20"	11,100 (5035)	4534 (2057)	14,500 (6577)	16,950 (7688)
	Duramax 6.6L V8	18"/20"	11,800 (5352)	4217 (1913)	14,500 (6577)	21,500 (9752)
Long Bed 2WD DRW	6.6L V8 gas	17"	14,000 (6350)	7442 (3376)	16,800 (7620)	16,800 (7620)
	Duramax 6.6L V8	17" - 5th-Wheel	14,000 (6350)	6532 (2963)	20,000 (9072)	32,000 (14,515)
	Duramax 6.6L V8	17" - Gooseneck	14,000 (6350)	6409 (2907)	20,000 (9072)	35,500 (16,103)
Long Bed 4x4 DRW	6.6L V8 gas	17"	14,000 (6350)	7145 (3241)	16,800 (7620)	16,710 (7580)
	Duramax 6.6L V8	17"	14,000 (6350)	6196 (2811)	20,000 (9072)	31,760 (14,406)
3500 HD DOUBLE CAB						
Long Bed 2WD SRW	6.6L V8 gas	18"/20"	11,100 (5035)	4373 (1984)	14,500 (6577)	16,700 (7575)
	Duramax 6.6L V8	18"/20"	11,850 (5375)	4130 (1873)	14,500 (6577)	21,490 (9748)
Long Bed 4x4 SRW	6.6L V8 gas	18"/20"	11,400 (5171)	4391 (1992)	14,500 (6577)	16,500 (7484)
	Duramax 6.6L V8	18"/20"	12,150 (5557)	4148 (1882)	14,500 (6577)	21,210 (9621)
Long Bed 2WD DRW	6.6L V8 gas	17"	14,000 (6350)	6985 (3168)	16,400 (7439)	16,400 (7439)
	Duramax 6.6L V8	17"	14,000 (6350)	6059 (2748)	20,000 (9072)	31,500 (14,288)
Long Bed 4x4 DRW	6.6L V8 gas	17"	14,000 (6350)	6703 (3040)	16,390 (7434)	16,270 (7380)
	Duramax 6.6L V8	17"	14,000 (6350)	5777 (2620)	20,000 (9072)	31,340 (14,216)
3500 HD CREW CAB						
Standard Bed 2WD SRW	6.6L V8 gas	18"/20"	11,000 (4990)	4316 (1958)	14,500 (6577)	16,700 (7575)
	Duramax 6.6L V8	18"/20"	11,750 (5330)	4135 (1876)	20,000 (9072)	21,500 (9752)
Standard Bed 4x4 SRW	6.6L V8 gas	18"/20"	11,350 (5148)	4365 (1980)	14,500 (6577)	16,530 (7498)
	Duramax 6.6L V8	18"/20"	12,100 (5489)	4185 (1898)	20,000 (9072)	21,300 (9662)
Long Bed 2WD SRW	6.6L V8 gas	18"/20"	11,150 (5058)	4333 (1965)	14,500 (6577)	16,700 (7575)
	Duramax 6.6L V8	18"/20"	11,900 (5398)	4013 (1820)	20,000 (9072)	21,330 (9675)
Long Bed 4x4 SRW	6.6L V8 gas	18"/20"	11,500 (5216)	4398 (1995)	14,500 (6577)	16,410 (7444)
	Duramax 6.6L V8	18"/20"	12,250 (5557)	4078 (1850)	20,000 (9072)	21,040 (9544)
Long Bed 2WD DRW	6.6L V8 gas	17"	14,000 (6350)	6894 (3127)	16,300 (7394)	16,200 (7348)
	Duramax 6.6L V8	17"	14,000 (6350)	5892 (2673)	20,000 (9072)	31,400 (14,243)
Long Bed 4x4 DRW	6.6L V8 gas	17"	14,000 (6350)	6610 (2998)	16,300 (7394)	16,180 (7339)
	Duramax 6.6L V8	17"	14,000 (6350)	5607 (2543)	20,000 (9072)	31,180 (14,143)

¹ Maximum Gross Vehicle Weight Rating (GVWR). When properly equipped; includes weight of vehicle, passengers, cargo and equipment. ² These maximum payload ratings are intended for comparison purposes only. Before you buy a vehicle or use it to haul people or cargo, carefully review the Vehicle Loading section of the Owner's Manual and check the carrying capacity of your specific vehicle on the label on the inside of the driver door jamb. ³ Before you buy a vehicle or use it for trailering, carefully review the Trailering section of the Owner's Manual. The weight of passengers, cargo and options or accessories may reduce the amount you can tow.

MODEL AVAILABILITY

● AVAILABLE – NOT AVAILABLE

MODEL	SERIES	STANDARD ENGINE 6.6L V8 GAS	AVAILABLE ENGINE DURAMAX 6.6L V8	2WD	4x4	REGULAR CAB LONG BED	DOUBLE CAB STANDARD BED	DOUBLE CAB LONG BED	CREW CAB STANDARD BED	CREW CAB LONG BED
WT	2500 HD	●	●	●	●	●	●	●	●	●
	3500 HD	●	●	●	●	●	–	●	● ¹	●
CUSTOM	2500 HD	●	–	●	●	–	●	●	●	●
LT	2500 HD	●	●	●	●	●	●	●	●	●
	3500 HD	●	●	●	●	●	–	●	● ¹	●
LTZ	2500 HD	●	●	●	●	–	●	●	●	●
	3500 HD	●	●	●	●	–	–	–	● ¹	●
HIGH COUNTRY	2500 HD	●	●	–	●	–	–	–	●	●
	3500 HD	●	●	–	●	–	–	–	● ¹	●

STANDARD EQUIPMENT

Standard on every Silverado HD:

MECHANICAL

Air filter – high-capacity with air filtration monitoring

Battery – run-down protection system with retained accessory power

Brakes – power, 4-wheel disc with Duralife® rotors and 4-wheel Anti-lock Braking System (ABS) and brake lining wear indicator

Cooling – external engine and transmission oil coolers

Differential – heavy-duty automatic locking rear

Engine – 6.6L V8 with Variable Valve Timing (VVT) and Direct Injection

Frame – fully boxed frame with hydroformed front section

StabiliTrak® – Electronic Stability Control System with Proactive Roll Avoidance and Traction Control; includes Electronic Trailer Sway Control and Hill Start Assist

Trailering Package – trailer hitch with 2.5-in. receiver and 2-in. insert, 7-pin wiring connector and Hitch Guidance²

Transmission – 6-speed automatic, heavy-duty

EXTERIOR

BedSteps – integrated on forward portion of bed on driver and passenger side

Bumper – rear CornerSteps

Cargo area lighting – integrated with centre high-mounted stop lamp

Fuel filler – capless fuelling (gas engine only)

Lamps – daytime running lamps, automatic on/off with automatic delay

Pickup bed – Durabed

Tailgate and bed rail – protection cap

Tie-downs – 12 fixed cargo tie-downs, rated at 227 kg (500 lb.)³ per corner

EXTERIOR (CONTINUED)

Tire – carrier lock

Tire – full-size spare

Wipers – front, 2-speed with variable delay (intermittent)

INTERIOR

Airbags⁴ – dual-stage frontal airbags for driver and front outboard passenger; seat-mounted side-impact airbags for driver and front outboard passenger; head-curtain airbags for front and rear outboard seating positions; includes front outboard Passenger Sensing System for frontal outboard passenger airbag

Air conditioning

Air vents – rear, heating/cooling (Double Cab and Crew Cab)

Assist handles – driver and front passenger, A-pillar; rear passenger, B-pillar

Connectivity – Bluetooth® phone connectivity and wireless audio streaming⁵

Display – outside temperature

Door locks – manual (Regular Cab); power programmable with lock-out protection and manual rear door child security (Double Cab and Crew Cab)

Instrument cluster – 6-gauge with speedometer, fuel level, engine temperature, tachometer, voltage and oil pressure

Power outlet – 12-volt auxiliary, front

Rear Seat Reminder⁶ (Double Cab and Crew Cab)

Rear Vision Camera²

Teen Driver technology

Tire Pressure Monitoring System – with Tire Fill Alert (does not monitor spare tire)

Windows – manual (Regular Cab); power with driver express-up/-down, all others express-down (Double Cab and Crew Cab)

¹ SRW only. ² Read the vehicle Owner's Manual for important feature limitations and information. ³ These maximum payload ratings are intended for comparison purposes only. Before you buy a vehicle or use it to haul people or cargo, carefully review the Vehicle Loading section of the Owner's Manual and check the carrying capacity of your specific vehicle on the label on the inside of the driver door jamb. ⁴ A NOTE ON CHILD SAFETY: Always use seat belts and the correct child restraint for your child's age and size, even with airbags. Even in vehicles equipped with the Passenger Sensing System, children are safer when properly secured in a rear seat in the appropriate infant, child or booster seat. Never place a rear-facing infant restraint in the front seat of any vehicle equipped with an active frontal airbag. See your vehicle Owner's Manual and the child safety seat instructions for more safety information. ⁵ Visit my.gm.ca/Chevrolet/en/learnAbout/bluetooth for more information. Full Bluetooth feature functionality varies by device, model and/or vehicle configuration, and software version. ⁶ Does not detect people or items. Always check rear seat before exiting.

MODELS



WORK TRUCK (WT)

Available on 2500 HD and 3500 HD Regular Cab, Double Cab and Crew Cab. In addition to standard equipment, WT includes:

MECHANICAL

Steering – recirculating ball with smart flow power steering system

Transfer case – 2-speed electronic (4x4 models)

EXTERIOR

Bumpers – semi-gloss Black, front and rear

Door handles – Black

Glass – solar-absorbing tinted

Grille – Chevrolet lettered grille, Black grille bar and mesh inserts with small Gold bowtie emblem

Headlamps – halogen reflector headlamps and daytime running lamps

Mirror caps – Black

Mirrors – vertical trailing, manual-adjustable, manual-folding and manual-extending with lower convex mirrors

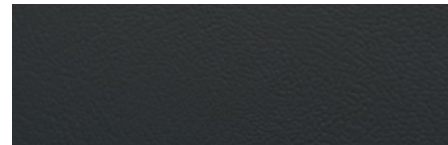
Moldings – Black, window beltline

Recovery hooks¹ – Black

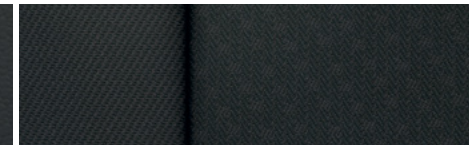
Tail lamps – incandescent

Tailgate – manual lift with lock

Tires – LT245/75R17E all-season[†] (2500 HD); LT275/70R18E all-terrain (3500 HD SRW); LT235/80R17E all-season[†] highway (3500 HD DRW)



Jet Black Vinyl (shown)



Jet Black Cloth

INTERIOR

Air conditioning – single-zone

Audio – 2-speaker system (Regular Cab); 6-speaker system (Double Cab and Crew Cab)

Driver Information Centre – 3.5-in. diagonal monochromatic display

Entertainment – Chevrolet Infotainment 3 system² with 7-in. diagonal colour touch-screen, AM/FM stereo, Bluetooth[®] audio streaming³ for two active devices, voice command pass-through to compatible phone, and Apple CarPlay^{®4} and Android Auto^{™5} compatibility


Floor covering – rubberized vinyl

Media – USB port⁶ on instrument panel

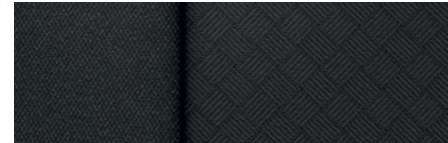
Seat – front 40/20/40 split-bench with manual 4-way driver and front-passenger seat adjusters

Seat – rear 60/40 split-folding bench (Double Cab and Crew Cab)

Steering column – tilt-wheel manual steering column with security locking feature

¹ To avoid the risk of injury, never use recovery hooks to tow a vehicle. See the Owner's Manual for more information. ² Chevrolet Infotainment System functionality varies by model. Full functionality requires compatible Bluetooth and smartphone, and USB connectivity for some devices. Data plan rates may apply. ³ Visit my.gm.ca/Chevrolet/en/learnAbout/bluetooth for more information. Full Bluetooth feature functionality varies by device, model and/or vehicle configuration, and software version. ⁴ Vehicle user interface is a product of Apple and its terms and privacy statements apply. Requires compatible iPhone and data plan rates apply. ⁵ Vehicle user interface is a product of Google and its terms and privacy statements apply. Requires the Android Auto app on Google Play and an Android compatible smartphone running Android 5.0 or higher. Data plan rates apply. ⁶ Not compatible with all devices. † All-season tires may not satisfy winter tire requirements in all regions of the country. Tires specifically designed for severe winter conditions and marked with the "winter tire" symbol  may be required during certain months or in certain regions. Contact your Provincial, Municipal or local road authority for information regarding which tires are required in your particular area.

MODELS (CONTINUED)



Jet Black Cloth

CUSTOM

Available on 2500 HD Double Cab and Crew Cab. In addition to or replacing WT features, Custom includes:

EXTERIOR

Bumpers – high-gloss Black, front and rear

Glass – deep-tinted behind front doors

Grille – Chevrolet lettered grille, body-colour grille bar and Black mesh inserts with small Gold bowtie emblem

Mirrors – vertical trailing, power-adjustable, heated upper glass, manual-folding and manual-extending with lower convex mirrors and integrated turn signal indicators

Tail lamps – LED

Tires – LT275/65R20 all-terrain

INTERIOR

Cruise control – electronic with set and resume speed, steering wheel-mounted controls

Floor covering – colour-keyed carpeting

Floor mats – vinyl, front and rear

Remote Keyless Entry

MODELS (CONTINUED)



LT

Available on 2500 HD and 3500 HD Regular Cab, Double Cab and Crew Cab. In addition to or replacing WT features, LT includes:

MECHANICAL

Trailer brake controller – integrated

EXTERIOR

Bumpers – chrome, front and rear

Door handles – body-colour

Glass – deep-tinted behind front doors

Grille – Chevrolet lettered grille, chrome grille bar, and Black mesh grille inserts with small Gold bowtie emblem

Mirrors – vertical trailing, heated upper glass, power-adjustable, manual-folding and manual-extending with lower convex mirrors and integrated turn signal indicators

Tailgate – manual with EZ-Lift

INTERIOR

Compass – located in instrument cluster

Cruise control – electronic with set and resume speed

Door locks – power programmable with lock-out protection (Regular Cab)

Driver Information Centre – 4.2-in. diagonal colour display and driver personalization

Entertainment – Chevrolet Infotainment 3 system¹ with 8-in. diagonal colour touch-screen, AM/FM stereo, Bluetooth[®] audio streaming² for two active devices, voice command pass-through to compatible phone, and Apple CarPlay^{®3} and Android Auto^{™4} compatibility

Floor covering – colour-keyed carpeting

Floor mats – vinyl, front and rear

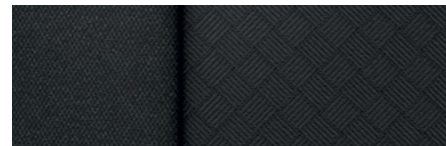
Media – two USB ports⁵ on instrument panel

Remote Keyless Entry

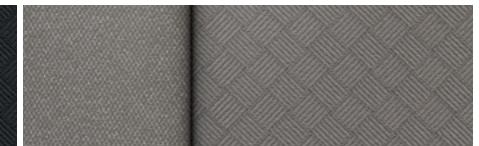
Seat – front 40/20/40 split-bench with covered armrest storage

Steering wheel – mounted audio, cruise and phone controls

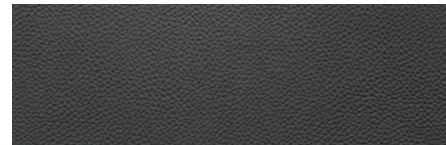
Windows – power driver express-up/-down, passenger express-down (Regular Cab)



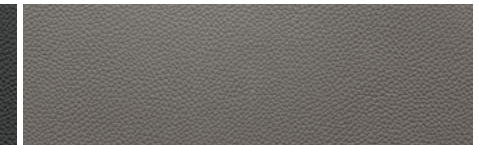
Jet Black Cloth



Gideon Cloth



Jet Black Leather-Appointed Front Seating Surfaces



Gideon Leather-Appointed Front Seating Surfaces (shown)

¹ Chevrolet Infotainment System functionality varies by model. Full functionality requires compatible Bluetooth and smartphone, and USB connectivity for some devices. Data plan rates may apply. ² Visit my.gm.ca/Chevrolet/en/learnAbout/bluetooth for more information. Full Bluetooth feature functionality varies by device, model and/or vehicle configuration, and software version. ³ Vehicle user interface is a product of Apple and its terms and privacy statements apply. Requires compatible iPhone and data plan rates apply. ⁴ Vehicle user interface is a product of Google and its terms and privacy statements apply. Requires the Android Auto app on Google Play and an Android compatible smartphone running Android 5.0 or higher. Data plan rates apply. ⁵ Not compatible with all devices.

MODELS (CONTINUED)



LTZ

Available on 2500 HD Double Cab and Crew Cab and 3500 HD Crew Cab. In addition to or replacing LT features, LTZ includes:

MECHANICAL

Advanced Trailering System – includes trailering checklist, trailer maintenance reminders, trailer security alerts, trailer mileage, Tow/Haul mode reminder, trailer electrical diagnostics and Trailer Tire Pressure Monitor System module

Hitch Guidance with Hitch View¹

Steering – Digital Variable Steering Assist

Transfer case – Autotrac 2-speed active electronic (4x4 models)

EXTERIOR

Door handles – chrome

Fog lamps – LED

Grille – Chevrolet lettered grille, chrome grille bar and grille inserts with small Gold bowtie emblem

Headlamps – LED reflector headlamps with LED signature daytime running lamps

Mirror caps – chrome

Mirrors – vertical trailering, heated and auto-dimming upper glass (driver and passenger), power-adjustable, power-folding and power-extending with lower convex mirrors, integrated turn signal indicators, puddle lamps, perimeter lighting and auxiliary lighting

Mouldings – stainless steel, window beltline

Power outlet – 120-volt AC (up to 400 watts, shared with instrument panel 120-volt AC outlet), bed-mounted

Tail lamps – LED

Tailgate – EZ-Lift, includes power lock and release

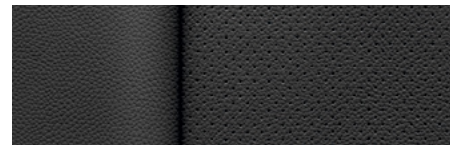
Tires – LT275/70R18E all-terrain (2500 HD)

Wheelhouse liners – rear (SRW models)

INTERIOR

Air conditioning – automatic, dual-zone with individual climate settings for driver and front passenger

Defogger – rear-window



Jet Black Perforated Leather-Appointed Front Seating Surfaces



Gideon Perforated Leather-Appointed Front Seating Surfaces (shown)

INTERIOR (CONTINUED)

Entertainment – Chevrolet Infotainment 3 Plus system² with 8-in. diagonal HD colour touch-screen, AM/FM stereo, HD Radio[®], Bluetooth[®] audio streaming³ for two active devices, Apple CarPlay^{®4} and Android Auto^{™5} compatibility, voice recognition and in-vehicle apps⁶

Keyless Open and Start

Media – two USB ports⁷ and SD card reader on instrument panel and two charge-only USB ports⁷ in second row

Memory – recalls two pre-sets for power driver seat and exterior mirror settings

Mirror – rear-view, auto-dimming

Power outlets – 120-volt AC (up to 400 watts, shared with cargo bed 120-volt AC outlet), on instrument panel; 12-volt auxiliary, rear

Rear Vision Camera¹ – HD

Seats – heated, power 10-way driver and front outboard passenger seat adjusters with power lumbar control

Seat – rear 60/40 folding bench with under-seat storage and centre fold-out armrest with two cupholders (seatback storage included on Crew Cab)

SiriusXM[®] with 360L[®] – All Access Package with trial subscription

Steering column – manual tilt/telescoping with electric theft-deterrent locking feature

Steering wheel – heated, leather-wrapped

Theft-deterrent system – unauthorized entry

Vehicle starter system – remote

Windows – power driver and front passenger express-up/-down, rear express-down

¹ Read the vehicle Owner's Manual for important feature limitations and information. ² Chevrolet Infotainment System functionality varies by model. Full functionality requires compatible Bluetooth and smartphone, and USB connectivity for some devices. Data plan rates may apply. ³ Visit my.gm.ca/Chevrolet/en/learnAbout/bluetooth for more information. Full Bluetooth feature functionality varies by device, model and/or vehicle configuration, and software version. ⁴ Vehicle user interface is a product of Apple and its terms and privacy statements apply. Requires compatible iPhone and data plan rates apply. ⁵ Vehicle user interface is a product of Google and its terms and privacy statements apply. Requires the Android Auto app on Google Play and an Android compatible smartphone running Android 5.0 or higher. Data plan rates apply. ⁶ Available on select Silverado models with compatible hardware. App functionality and features vary with vehicle equipment and trim level. Data connection may be required. Some features require active service plan and working electrical system. Terms and limitations apply. ⁷ Not compatible with all devices. ⁸ Available in 10 Canadian provinces, 3 territories and the 48 contiguous United States. Subscription sold separately after trial period. If you decide to continue your service at the end of your trial subscription, the plan you choose will automatically renew and bill at then-current rates until you call 1-888-539-7474 to cancel. Other fees and taxes will apply. All fees and programming subject to change. See the Customer Agreement for complete terms at siriusxm.ca/terms.

MODELS (CONTINUED)



HIGH COUNTRY

Available on 2500 HD and 3500 HD Crew Cab 4x4. In addition to or replacing LTZ features, High Country includes:

MECHANICAL

Exhaust – polished tip (6.6L V8 gas engine only)

EXTERIOR

Assist steps – chrome

Bedliner – Black Chevytec spray-on bedliner with High Country logo

Bumpers – body-colour, front and rear

Cargo area lighting – LED, in pickup bed, key fob-activated

Grille – Gold bowtie emblem, chrome grille bar and grille inserts with Bronze accents

Headlamps – high-intensity LED reflector headlamps with LED signature curtain daytime running lamps

Recovery hooks¹ – chrome

Tailgate – power up/down with power lock and release

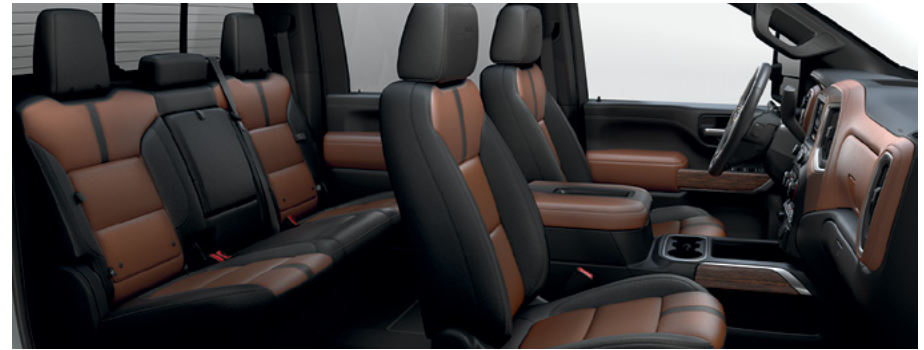
Tires – LT275/65R20 all-terrain (2500 HD and 3500 HD SRW)

INTERIOR

Audio – 7-speaker Bose premium system with Richbass subwoofer

Console – floor-mounted console with cupholders, cellphone storage, power cord management and hanging file folder capability

Driver Information Centre – enhanced 8-in. diagonal multi-colour configurable display, includes analogue speedometer and tachometer



Jet Black Perforated Leather-Appointed Seating Surfaces

Jet Black/Umbre Perforated Leather-Appointed Seating Surfaces (shown)

INTERIOR (CONTINUED)

Entertainment – Chevrolet Infotainment 3 Premium system² with Navigation³; includes 8-in. diagonal HD colour touch-screen, Connected Navigation⁴; AM/FM stereo, Bluetooth[®] audio streaming⁵ for two active devices, Apple CarPlay^{®6} and Android Auto^{™7} compatibility, enhanced voice recognition⁴ and additional memory for in-vehicle apps⁸

Floor mats – carpeted, front and rear

Front and Rear Park Assist⁹

Lane Change Alert with Side Blind Zone Alert⁹

Media – two USB ports,¹⁰ SD card reader and auxiliary input jack inside centre console

Rear Cross Traffic Alert⁹

Seats – front bucket seats with centre floor console

Seats – ventilated driver and front passenger, heated rear outboard seating positions

Window – power, rear sliding with defogger

Wireless charging¹¹

¹ To avoid the risk of injury, never use recovery hooks to tow a vehicle. See the Owner's Manual for more information. ² Chevrolet Infotainment System functionality varies by model. Full functionality requires compatible Bluetooth and smartphone, and USB connectivity for some devices. Data plan rates may apply. ³ Detailed map coverage is available for most major urban areas of the United States and for certain metropolitan areas of Canada (Vancouver, Calgary, Edmonton, Winnipeg, Windsor, London, Toronto, Ottawa, Montreal, Quebec City and Halifax). Coverage is significantly limited outside these areas. ⁴ Requires subscription to OnStar Guidance Plan, Premium Access Plan or Navigation Add-On. Connected Navigation and Real-time Points of Interest (POI) only available on properly equipped vehicles. Services are subject to user terms and limitations and vary by vehicle model. Visit onstar.ca for more details. ⁵ Visit my.gm.ca/Chevrolet/en/learnAbout/bluetooth for more information. Full Bluetooth feature functionality varies by device, model and/or vehicle configuration, and software version. ⁶ Vehicle user interface is a product of Apple and its terms and privacy statements apply. Requires compatible iPhone and data plan rates apply. ⁷ Vehicle user interface is a product of Google and its terms and privacy statements apply. Requires the Android Auto app on Google Play and an Android compatible smartphone running Android 5.0 or higher. Data plan rates apply. ⁸ Available on select Silverado models with compatible hardware. App functionality and features vary with vehicle equipment and trim level. Data connection may be required. Some features require active service plan and working electrical system. Terms and limitations apply. ⁹ Read the vehicle Owner's Manual for important feature limitations and information. ¹⁰ Not compatible with all devices. ¹¹ The system wirelessly charges one compatible mobile device. Some devices require an adapter or back cover. See myChevrolet.ca for more information.

SPECIFICATIONS

● STANDARD ○ AVAILABLE – NOT AVAILABLE

	WT	CUSTOM	LT	LTX	HIGH COUNTRY
SAFETY & SECURITY					
Automatic Emergency Braking ¹ (requires available Safety Package II)	–	–	–	○	○
Following Distance Indicator ¹ and Forward Collision Alert ¹ (requires available Safety Package II)	–	–	–	○	○
Front and Rear Park Assist ¹ – ultrasonic (WT requires available WT Safety Package; LT and LTX require available Safety Package)	○	–	○	○	●
Lane Change Alert with Side Blind Zone Alert ¹ (WT requires available WT Safety Package; LT and LTX require available Safety Package)	○	–	○	○	●
Lane Departure Warning ¹ (requires available Safety Package II)	–	–	–	○	○
OnStar Safety & Security Plan coverage ² for 1 month from the trial activation date, which includes Automatic Crash Response, Stolen Vehicle Assistance, Roadside Assistance and Turn-by-Turn Navigation (requires available Infotainment Package on Custom)	○ ³	○ ³	●	●	●
Rear Cross Traffic Alert ¹ (WT requires available WT Safety Package; LT and LTX require available Safety Package)	○	–	○	○	●
Rear Vision Camera ¹	●	●	●	–	–
Rear Vision Camera – HD ¹ (LT requires available Convenience Package II or Advanced Trailing Package)	–	–	○	●	●
Surround Vision – HD ¹ – includes two trailer camera provisions (requires available Technology Package)	–	–	–	○	○
Safety Alert Seat ¹ for driver (requires available Safety Package II)	–	–	–	○	○
Teen Driver technology	●	●	●	●	●
Theft-deterrent system – unauthorized entry (LT requires available Convenience Package)	–	–	○	●	●
MECHANICAL					
Alternator – 220-amp, included with available Duramax 6.6L V8 or Snow Plow Prep Package; available with 6.6L V8 gas engine	○	○	○	○	○
Dual, 220-amp primary and 170-amp auxiliary (requires available auxiliary battery)	○	○	○	○	○
Battery – auxiliary (requires 6.6L V8 gas engine with available 220-amp alternator or dual alternators)	○	○	○	○	○
Engine – Duramax 6.6L V8 Turbo-Diesel engine (B20 biodiesel-compatible) and Allison® 10-speed automatic transmission; 445 hp @ 2800 rpm, 910 lb.-ft. of torque @ 1600 rpm; includes exhaust brake, engine block heater and capped fuel filler (WT requires available trailer brake controller; Regular Cab WT requires available WT Convenience Package)	○	–	○	○	○
High idle switch (not available with Power Take-Off)	○	○	○	○	○
Power Take-Off (WT requires available cruise control and Duramax 6.6L V8; LT requires available Duramax 6.6L V8)	○	–	○	–	–
Skid plates – oil pan, front axle and transfer case (2500 HD and 3500 HD High Country SRW require available Z71 Off-Road Package)	○	○	○	○	○

	WT	CUSTOM	LT	LTX	HIGH COUNTRY
MECHANICAL (CONTINUED)					
Trailer brake controller – integrated (Regular Cab WT requires available WT Convenience Package; Custom requires available Custom Convenience Package, Custom Value Package or Gooseneck/5th-Wheel Package)	○	○	●	●	●
Trailer tire pressure monitoring sensors – set of four sensors (LT requires available Convenience Package II or Advanced Trailing Package)	–	–	○	○	○
Trailer wiring provisions – for trailering with gooseneck or 5th-wheel trailer, includes additional 7-way wiring harness at the rear of the pickup bed	○	○	○	○	○
Transfer case – 2-speed, electronic with push-button controls (4x4 models)	●	●	●	–	–
– 2-speed, electronic active Autotrac with push-button controls (4x4 models)	–	–	○	●	●
Winter grille cover (requires available Duramax 6.6L V8)	○	–	○	○	○
EXTERIOR					
Assist steps – chrome, 6-in. rectangular (Crew Cab)	–	–	○	○	●
Bed View Camera ¹ – two trailer camera provisions (LT requires available Convenience Package II or Advanced Trailing Package)	–	–	○	○	○
Bedliner – Chevytec spray-on, Black with logo (bed only; tailgate has Black composite inner panel)	○	○	○	○	●
Bumpers – chrome, front and rear	○	–	●	●	–
Cargo area lighting – LED pickup bed, activated with switch in bed, instrument panel centre switch bank or key fob	○	○	○	○	●
Fog lamps – LED (LT requires available Convenience Package)	–	–	○	●	●
Glass – deep-tinted behind front doors (Double Cab and Crew Cab)	○	●	●	●	●
IntelliBeam headlamps – automatic high beam on/off (requires available Safety Package II)	–	–	–	○	○
Mirrors – vertical trailering, heated upper glass, auto-dimming driver side, power-adjustable, power-folding and manual-extending with lower convex mirrors and integrated turn signal indicators, puddle lamps, perimeter lighting and auxiliary lighting; includes interior auto-dimming rear-view mirror (WT requires available WT Convenience Package; Custom requires available Custom Convenience Package; LT requires available Convenience Package or Advanced Trailing Package)	○	○	○	–	–
– heated, power-adjustable, manual-folding, non-extending; passenger mirror has flat glass (WT requires available WT Convenience Package; 3500 HD LT requires SRW)	○	–	○	–	–
Roof marker lamps – LED amber (standard on 3500 HD DRW models)	○	○	○	○	○
Tailgate – EZ-Lift, power lock and release (WT requires available WT Convenience Package; Custom requires available Custom Convenience Package; LT requires available Convenience Package or Advanced Trailing Package)	○	○	○	●	–
– power up/down gate function, power lock and release (LTX requires available LTX Convenience Package, LTX Plus Package or LTX Premium Package)	–	–	–	○	●
Wheelhouse liners – rear (LT requires available Convenience Package) (SRW models only)	–	–	○	●	●

¹ Read the vehicle Owner's Manual for important feature limitations and information. ² Properly equipped Chevrolet vehicles are eligible for 1 month of Connected Services trial and OnStar Safety & Security coverage starting at trial activation date; includes emergency and navigation services, Connected Navigation, the Remote Access Plan, plus a 3 GB or 1-month (whichever comes first) data plan trial. Services subject to user terms and limitations; capabilities vary by model and/or vehicle configuration; visit onstar.ca for details. Data plans offered by AT&T or its local service provider. Availability subject to change. GM Canada may modify, extend or terminate offers for any reason, in whole or in part, at any time, without notice. Requires vehicle electrical system (including battery), wireless service and GPS satellite signal to be available and operating for features to function properly. ³ Factory-installed equipment purchase required.

SPECIFICATIONS (CONTINUED)

● STANDARD ○ AVAILABLE – NOT AVAILABLE

	WT	CUSTOM	LT	LTX	HIGH COUNTRY
INTERIOR					
Air conditioning – single-zone – automatic, dual-zone (LT requires available Convenience Package)	●	●	●	–	–
Console – floor-mounted, with cupholders, cellphone storage, power cord management and hanging file holder capability (LT requires available front bucket seats; LTX requires available LTZ Convenience Package)	–	–	○	○	●
Cruise control – electronic with set and resume speed	○	●	●	●	●
Defogger – rear-window (Custom requires available Custom Convenience Package)	○	○	○	●	●
Driver Information Centre – 3.5-in. diagonal monochromatic display – 4.2-in. diagonal colour display and driver personalization – enhanced with 8-in. diagonal multi-colour configurable display, includes analogue speedometer and tachometer (LTX requires available Technology Package)	●	●	–	–	–
Head-Up Display – 15-in. diagonal multi-colour (requires available Technology Package)	–	–	–	○	○
Keyless Open and Start (LT requires available Convenience Package)	–	–	○	●	●
Mirror – rear-view, auto-dimming (WT, Custom and LT require available exterior vertical trailing, power-adjustable, power-folding and manual-extending mirrors) – Rear Camera Mirror ¹ – auto-dimming rear-view mirror with full camera display (WT requires available WT Convenience Package; Custom requires available Custom Convenience Package; LT requires available Convenience Package or Advanced Trailing Package; LTX and High Country require available Technology Package)	○	○	○	●	●
Power outlets – 120-volt AC (400 watts combined), instrument panel- and bed-mounted (WT requires available WT Convenience Package; Custom requires available Custom Convenience Package; LT requires available Convenience Package II)	○	○	○	●	●
Remote Keyless Entry (WT requires available WT Convenience Package)	○	●	●	–	–
Steering column – manual tilt/telescoping (LT requires available Convenience Package)	–	–	○	●	●
Steering wheel – heated, leather-wrapped (LT requires available Convenience Package)	–	–	○	●	●

	WT	CUSTOM	LT	LTX	HIGH COUNTRY
INTERIOR (CONTINUED)					
Sunroof – power (Crew Cab) (LT requires available Convenience Package II; LTX requires available LTZ Convenience Package)	–	–	○	○	○
Universal Home Remote – programmable, includes garage door opener (LT requires available Convenience Package II; LTX requires available LTZ Convenience Package)	–	–	○	○	●
Upfitter switch kit – includes three 30-amp and two 20-amp configurable circuits for installation of aftermarket accessories	○	○	○	○	○
Vehicle starter system – remote (Custom requires available Custom Convenience Package; LT requires available Convenience Package or Remote Start Package)	–	○	○	●	●
Window – power-sliding rear with defogger (LT requires available Convenience Package II; LTX requires available LTZ Convenience Package)	–	–	○	○	●
Wireless charging ² (LTX requires available LTZ Convenience Package II)	–	–	–	○	●
SEATS					
Seats – front 40/20/40 split-bench – front 40/20/40 split-bench, includes covered storage armrest – front 40/20/40 split-bench; LTX includes covered storage armrest and lockable under-seat storage (standard on Regular Cab LT; Double Cab and Crew Cab LT require available Convenience Package) – front bucket seats with centre floor console (Double Cab and Crew Cab) (LT requires available Convenience Package; LTX requires available LTZ Convenience Package, LTZ Plus Package or LTZ Premium Package)	●	●	–	–	–
Seats – driver and front-passenger 4-way manual adjusters – power 10-way driver adjuster with power lumbar control (LT requires available Convenience Package) – power 10-way front-passenger adjuster with power lumbar control – heated driver and front outboard passenger seats (LT requires available Convenience Package) – heated rear outboard passenger seats (Crew Cab) (LTX requires available LTZ Convenience Package) – ventilated driver and front-passenger seats (LTX requires available LTZ Convenience Package)	●	●	●	–	–
	–	–	○	●	●
	–	–	–	●	●
	–	–	○	●	●
	–	–	–	○	●
	–	–	–	○	●

¹ Read the vehicle Owner's Manual for important feature limitations and information. ² The system wirelessly charges one compatible mobile device. Some devices require an adapter or back cover. See myChevrolet.ca for more information.

SPECIFICATIONS (CONTINUED)

● STANDARD ○ AVAILABLE – NOT AVAILABLE

	WT	CUSTOM	LT	L TZ	HIGH COUNTRY
INFOTAINMENT					
Chevrolet Infotainment 3 Plus system ¹ with 8-in. diagonal HD colour touch-screen, AM/FM stereo, HD Radio [®] , Bluetooth [®] audio streaming ² for two active devices, Apple CarPlay ^{®3} and Android Auto ^{™4} compatibility, voice recognition and in-vehicle apps ⁵ (LT requires available Convenience Package II or Advanced Trailing Package)	–	–	○	●	–
Chevrolet Infotainment 3 Premium system ¹ with Navigation ⁶ ; includes Plus system features listed above, Connected Navigation ⁷ ; enhanced voice recognition ⁷ and additional memory for in-vehicle apps ⁵ (LTZ requires available LTZ Convenience Package II)	–	–	–	○	●
Audio – 7-speaker Bose premium system with Richbass subwoofer (LTZ requires available LTZ Convenience Package II)	–	–	–	○	●
SiriusXM ^{®8} – All Access Package with trial subscription (requires available Infotainment Package)	–	○	–	–	–
SiriusXM [®] with 360L ⁸ – All Access Package with trial subscription (LT requires available Convenience Package II or Advanced Trailing Package)	–	–	○	●	●
Built-in 4G LTE Wi-Fi [®] Hotspot ⁹ includes 1-month or 3 GB data plan trial (whichever comes first) from trial activation date (WT requires available OnStar Safety & Security Plan coverage; ¹⁰ Custom requires available OnStar Safety & Security Plan coverage ¹⁰ and Infotainment Package)	○ ¹¹	○ ¹¹	●	●	●
Chevrolet Connected Access ¹² includes 10 years of standard connectivity and enables features such as Vehicle Diagnostics ¹³ and Dealer Maintenance Notification ¹³ (WT requires available OnStar Safety & Security Plan coverage; ¹⁰ Custom requires available OnStar Safety & Security Plan coverage ¹⁰ and Infotainment Package)	○ ¹¹	○ ¹¹	●	●	●

¹ Chevrolet Infotainment System functionality varies by model. Full functionality requires compatible Bluetooth and smartphone, and USB connectivity for some devices. Data plan rates may apply. ² Visit my.gm.ca/Chevrolet/en/learnAbout/bluetooth for more information. Full Bluetooth feature functionality varies by device, model and/or vehicle configuration, and software version. ³ Vehicle user interface is a product of Apple and its terms and privacy statements apply. Requires compatible iPhone and data plan rates apply. ⁴ Vehicle user interface is a product of Google and its terms and privacy statements apply. Requires the Android Auto app on Google Play and an Android compatible smartphone running Android 5.0 or higher. Data plan rates apply. ⁵ Available on select Silverado models with compatible hardware. App functionality and features vary with vehicle equipment and trim level. Data connection may be required. Some features require active service plan and working electrical system. Terms and limitations apply. ⁶ Detailed map coverage is available for most major urban areas of the United States and for certain metropolitan areas of Canada (Vancouver, Calgary, Edmonton, Winnipeg, Windsor, London, Toronto, Ottawa, Montreal, Quebec City and Halifax). Coverage is significantly limited outside these areas. ⁷ Requires subscription to OnStar Guidance Plan, Premium Access Plan or Navigation Add-On. Connected Navigation and Real-time Points of Interest (POI) only available on properly equipped vehicles. Services are subject to user terms and limitations and vary by model and/or vehicle configuration. Visit onstar.ca for more details. ⁸ Available in 10 Canadian provinces, 3 territories and the 48 contiguous United States. Subscription sold separately after trial period. If you decide to continue your service at the end of your trial subscription, the plan you choose will automatically renew and bill at then-current rates until you call 1-888-539-7474 to cancel. Other fees and taxes will apply. All fees and programming subject to change. See the Customer Agreement for complete terms at siriusxm.ca/terms. ⁹ Visit onstar.ca for vehicle availability, coverage maps, details and system limitations. Services and connectivity may vary by model and/or vehicle configuration and conditions as well as geographical and technical restrictions. 4G LTE service available in select markets. Requires active connected vehicle services and a data plan to access the vehicle's built-in Wi-Fi Hotspot. Accessory Power must be active to use the Wi-Fi Hotspot. Data plans provided by AT&T or its local service provider. Credit card is required for purchase. ¹⁰ Properly equipped Chevrolet vehicles are eligible for 1 month of Connected Services trial and OnStar Safety & Security coverage starting at trial activation date; includes emergency and navigation services, Connected Navigation, the Remote Access Plan, plus a 3 GB or 1-month (whichever comes first) data plan trial. Services subject to user terms and limitations; capabilities vary by model and/or vehicle configuration; visit onstar.ca for details. Data plans offered by AT&T or its local service provider. Availability subject to change. GM Canada may modify, extend or terminate offers for any reason, in whole or in part, at any time, without notice. Requires vehicle electrical system (including battery), wireless service and GPS satellite signal to be available and operating for features to function properly. ¹¹ Factory-installed equipment purchase required. ¹² Limitations apply. Not transferable. Standard connectivity available to original purchaser for 10 years from the trial activation date for properly equipped vehicles. Visit onstar.ca for details and further plan limitations. Connected Access does not include emergency or security services. Availability of Connected Access and any of its services is dependent on compatible 4G LTE wireless networks and is also subject to change. ¹³ Capabilities vary by model and/or vehicle configuration and service plan. Visit onstar.ca for vehicle availability. Message and data rates may apply. Requires active service, email address on file and enrollment in Vehicle Diagnostics. Not all issues will deliver alerts. On-Demand Diagnostics requires a paid service plan.

AVAILABLE PACKAGES

● STANDARD ○ AVAILABLE – NOT AVAILABLE

	WT	CUSTOM	LT	LTZ	HIGH COUNTRY
MECHANICAL					
Advanced Trailering Package	–	–	○	●	●
Includes Hitch Guidance with Hitch View ¹ ; Advanced Trailering System with Trailering App ² ; HD Rear Vision Camera ³ ; Trailer Tire Pressure Monitoring System module, and EZ-Lift power lock and release tailgate; LT includes Chevrolet Infotainment 3 Plus system ³ with 8-in. diagonal HD colour touch-screen, SiriusXM [®] with 360L ⁴ All Access Package with trial subscription and SD card reader					
Snow Plow Prep Package (4x4 models)	○	○	○	○	○
Includes power feed for roof emergency light, pass-through dash grommet, 220-amp alternator, skid plates and increased front GAWR (not available with Heavy-Duty Front Spring Package) (LTZ requires available Chevytec spray-on bedliner; 3500 HD High Country SRW requires available Z71 Off-Road Package)					
Alaskan Snow Plow Special Edition (4x4 models; late availability)	○	–	○	–	–
Includes Snow Plow Prep Package, Chevytec spray-on bedliner, roof marker lamps and Alaskan decal (replaces standard 4x4 bed-mounted decal); LT includes rubberized-vinyl floor covering; 2500 HD WT and LT and 3500 HD WT include 18" machined-aluminum wheels (PYV) with Silver-painted accents; 2500 HD WT and LT include LT275/70R18E all-terrain tires					
Gooseneck/5th-Wheel Package	○	○	○	○	○
Includes hitch platform to accept gooseneck or 5th-wheel hitch; includes hitch platform with tray to accept ball, stamped bed holes with removable caps installed and bed-mounted 7-pin trailer harness; WT and Custom include integrated trailer brake controller and Chevytec spray-on bedliner; LT includes Chevytec spray-on bedliner; LTZ includes Chevytec spray-on bedliner and Bed View Camera ¹ ; High Country includes Bed View Camera ¹ (Regular Cab WT requires available WT Convenience Package)					
Heavy-Duty Front Spring Package (not available with Snow Plow Prep Package)	○	○	○	○	○
Z71 Off-Road Package (4x4 models)	○	–	○	○	○
Includes Off-Road suspension with off-road tuned twin-tube shocks, Hill Descent Control and skid plates; Z71 fender badge replaces standard 4x4 bed-mounted decal on WT, LT and LTZ; LT and LTZ include Z71 grille logo; 2500 HD WT and LT include LT265/70R17E all-terrain tires (not available on DRW models)					

	WT	CUSTOM	LT	LTZ	HIGH COUNTRY
EXTERIOR					
Z71 Off-Road and Protection Package (4x4 models)	–	–	○	○	–
Includes Z71 Off-Road Package, Chevytec spray-on bedliner and all-weather floor liners with Z71 logo; 2500 HD LT includes 18" machined-aluminum wheels (PYV) with Silver-painted accents and LT275/70R18E all-terrain tires; LTZ includes 20" 6-spoke polished-aluminum wheels (RTH) and LT275/65R20 all-terrain tires (not available on DRW models; LT requires Double Cab or Crew Cab)					
INTERIOR					
WT Convenience Package	○	–	–	–	–
Includes Remote Keyless Entry, EZ-Lift power lock and release tailgate, deep-tinted windows behind front doors, rear-window defogger, cruise control, and exterior vertical trailering mirrors with heated upper glass, power-adjustable, manual-folding and manual-extending, with lower convex mirrors and integrated turn signal indicators; Regular Cab includes power windows with driver express-up/down and passenger express-down and power door locks					
WT Safety Package	○	–	–	–	–
Includes Front and Rear Park Assist; Lane Change Alert with Side Blind Zone Alert; Rear Cross Traffic Alert; and front and rear chrome bumpers (requires available WT Convenience Package, rear-window defogger, 120-volt AC power outlets, integrated trailer brake controller and exterior vertical trailering, power-adjustable, power-folding and manual-extending mirrors)					
Custom Convenience Package	–	○	–	–	–
Includes remote vehicle starter system, rear-window defogger, LED cargo area lighting in pickup bed, EZ-Lift power lock and release tailgate, and integrated trailer brake controller					
Custom Value Package	–	○	–	–	–
Includes Custom Convenience Package, Infotainment Package, exterior vertical trailering mirrors, power-adjustable, power-folding and manual-extending mirrors, heated upper glass with auto-dimming driver side upper glass, puddle lamps, perimeter lighting and auxiliary lighting; includes interior auto-dimming rear-view mirror					
Infotainment Package	–	○ ⁶	–	–	–
Includes SiriusXM ^{®4} All Access Package with trial subscription and OnStar Safety & Security Plan coverage ⁵ for 1 month					
Rear Seat with Storage Package (Crew Cab)	–	○	○	–	–
Includes rear in-seatback left and right storage compartments and centre fold-down armrest with cupholders					
Up-level Rear Seat with Storage Package (Crew Cab)	–	–	○	●	●
Includes under-seat storage, rear in-seatback left and right storage compartments and centre fold-down armrest with cupholders (LT requires available Leather Package)					

¹ Read the vehicle Owner's Manual for important feature limitations and information. ² Device data connection required. Available on select Apple and Android devices. Some features require connected vehicle services trial or active plan and working electrical system. Service availability, features and functionality vary by model and/or vehicle configuration. Visit onstar.ca for details and limitations. ³ Chevrolet Infotainment System functionality varies by model. Full functionality requires compatible Bluetooth and smartphone, and USB connectivity for some devices. Data plan rates may apply. ⁴ Available in 10 Canadian provinces, 3 territories and the 48 contiguous United States. Subscription sold separately after trial period. If you decide to continue your service at the end of your trial subscription, the plan you choose will automatically renew and bill at then-current rates until you call 1-888-539-7474 to cancel. Other fees and taxes will apply. All fees and programming subject to change. See the Customer Agreement for complete terms at siriusxm.ca/terms. ⁵ Properly equipped Chevrolet vehicles are eligible for 1 month of Connected Services trial and OnStar Safety & Security coverage starting at trial activation date; includes emergency and navigation services, Connected Navigation, the Remote Access Plan, plus a 3 GB or 1-month (whichever comes first) data plan trial. Services subject to user terms and limitations; capabilities vary by model and/or vehicle configuration; visit onstar.ca for details. Data plans offered by AT&T or its local service provider. Availability subject to change. GM Canada may modify, extend or terminate offers for any reason, in whole or in part, at any time, without notice. Requires vehicle electrical system (including battery), wireless service and GPS satellite signal to be available and operating for features to function properly. ⁶ Factory-installed equipment purchase required.

AVAILABLE PACKAGES (CONTINUED)

● STANDARD ○ AVAILABLE – NOT AVAILABLE

	WT	CUSTOM	LT	LTZ	HIGH COUNTRY
INTERIOR (CONTINUED)					
Convenience Package	–	–	○	–	–
Includes dual-zone automatic climate control, power 10-way driver-seat adjuster with power lumbar control, heated driver and front outboard passenger seats, heated leather-wrapped steering wheel, manual tilt/telescoping steering column with security locking feature, rear-window defogger, Keyless Open and Start, remote vehicle starter system, unauthorized entry theft-deterrent system, EZ-Lift power lock and release tailgate, LED cargo area lighting in pickup bed, LED fog lamps, and rear wheelhouse liners on SRW models; Double Cab and Crew Cab include front 40/20/40 split-bench seat with under-seat storage, two charge-only USB ports ¹ in second row, and rear 12-volt auxiliary power outlet					
Convenience Package II	–	–	○	–	–
Includes instrument panel-mounted 120-volt AC power outlet and bed-mounted 120-volt AC power outlet (400 watts combined), Chevrolet Infotainment 3 Plus system ² with 8-in. diagonal HD colour touch-screen, SiriusXM [®] with 360L ³ All Access Package with trial subscription, SD card reader, HD Rear Vision Camera ⁴ ; Hitch Guidance with Hitch View ⁴ and Advanced Trailering System; Double Cab and Crew Cab include Universal Home Remote and power-sliding rear window; Crew Cab includes Cloth Rear Seat with Storage Package (requires available Convenience Package)					
Leather Package (Double Cab and Crew Cab)	–	–	○	–	–
Includes Jet Black or Gideon leather-appointed front seats; Crew Cab includes Up-level Rear Seat with Storage Package (requires available Convenience Package II)					
Remote Start Package	–	–	○	–	–
Includes remote vehicle starter system and rear-window defogger					
True North Edition (Double Cab and Crew Cab)	–	–	○	–	–
Includes Convenience Package and Safety Package					
Safety Package	–	–	○	○	–
Includes Front and Rear Park Assist ⁵ ; Lane Change Alert with Side Blind Zone Alert ⁴ and Rear Cross Traffic Alert ⁴ (LT requires available Convenience Package and exterior vertical trailering, power-adjustable, power-folding and manual-extending mirrors)					

	WT	CUSTOM	LT	LTZ	HIGH COUNTRY
INTERIOR (CONTINUED)					
LTZ Convenience Package	–	–	–	○	–
Includes heated and ventilated front bucket seats, front centre console with USB ports; SD card reader and auxiliary input jack, power-sliding rear window, Universal Home Remote, power up/down tailgate with power lock and release, and LED cargo area lighting in pickup bed; Crew Cab models include heated rear outboard seats					
LTZ Convenience Package II	–	–	–	○	–
Includes Chevrolet Infotainment 3 Premium system ² with Navigation ³ ; 7-speaker Bose premium audio system with Richbass subwoofer and wireless charging ⁶ (requires available LTZ Convenience Package)					
LTZ Plus Package	–	–	–	○	–
Includes LTZ Convenience Package and Safety Package (not available with LTZ Premium Package)					
LTZ Premium Package	–	–	–	○	–
Includes LTZ Convenience Package, LTZ Convenience Package II, Safety Package, Safety Package II, Technology Package, 20" 6-spoke polished-aluminum wheels (RTH) and LT275/65R20 all-terrain tires (not available with LTZ Plus Package; not available on DRW models)					
Safety Package II	–	–	–	○	○
Includes Forward Collision Alert ⁴ ; Lane Departure Warning ⁴ ; Automatic Emergency Braking ⁴ ; IntelliBeam headlamps, Following Distance Indicator ⁴ and Safety Alert Seat ⁴ for driver (LTZ requires available Safety Package)					
Technology Package	–	–	–	○	○
Includes HD Surround Vision ⁴ with two trailer camera provisions, Rear Camera Mirror ⁴ with auto-dimming interior rear-view mirror and full camera display, Head-Up Display and Bed View Camera ⁴ ; LTZ includes enhanced Driver Information Centre (LTZ requires available LTZ Convenience Package II and Safety Package II; High Country requires available Safety Package II)					
High Country Deluxe	–	–	–	–	○
Includes Safety Package II, Technology Package and Gooseneck/5th-Wheel Package					

¹ Not compatible with all devices. ² Chevrolet Infotainment System functionality varies by model. Full functionality requires compatible Bluetooth and smartphone, and USB connectivity for some devices. Data plan rates may apply. ³ Available in 10 Canadian provinces, 3 territories and the 48 contiguous United States. Subscription sold separately after trial period. If you decide to continue your service at the end of your trial subscription, the plan you choose will automatically renew and bill at then-current rates until you call 1-888-539-7474 to cancel. Other fees and taxes will apply. All fees and programming subject to change. See the Customer Agreement for complete terms at siriusxm.ca/terms. ⁴ Read the vehicle Owner's Manual for important feature limitations and information. ⁵ Detailed map coverage is available for most major urban areas of the United States and for certain metropolitan areas of Canada (Vancouver, Calgary, Edmonton, Winnipeg, Windsor, London, Toronto, Ottawa, Montreal, Quebec City and Halifax). Coverage is significantly limited outside these areas. ⁶ The system wirelessly charges one compatible mobile device. Some devices require an adapter or back cover. See myChevrolet.ca for more information.

DIMENSIONS



EXTERIOR, mm (in.)	REGULAR CAB LONG BED	DOUBLE CAB STANDARD BED	DOUBLE CAB LONG BED	CREW CAB STANDARD BED	CREW CAB LONG BED
Wheelbase	3595 (141.6)	3795 (149.4)	4127 (162.5)	4037 (158.9)	4369 (172.0)
Length	5982 (235.5)	6107 (240.5)	6514 (256.5)	6349 (250.0)	6756 (266.0)
Width, SRW	2076 (81.8)	2079 (81.9)	2079 (81.9)	2079 (81.9)	2079 (81.9)
Width, DRW	2457 (96.8)	–	2457 (96.8)	–	2457 (96.8)
Height, 2500 HD 2WD	2030 (79.9)	2031 (80.0)	2027 (79.8)	2027 (79.8)	2023 (79.7)
Height, 2500 HD 4x4	2030 (79.9)	2031 (80.0)	2027 (79.8)	2027 (79.8)	2023 (79.7)
Height, 3500 HD SRW	2056 (80.9)	–	2054 (80.9)	2054 (80.9)	2049 (80.7)
Height, 3500 HD DRW	2038 (80.2)	–	2037 (80.2)	–	2033 (80.0)
Ground Clearance, 2500 HD 2WD	259 (10.2)	259 (10.2)	258 (10.2)	257 (10.1)	256 (10.1)
Ground Clearance, 2500 HD 4x4	259 (10.2)	259 (10.2)	258 (10.2)	257 (10.1)	256 (10.1)
Ground Clearance, 3500 HD SRW	285 (11.2)	–	284 (11.2)	284 (11.2)	283 (11.1)
Ground Clearance, 3500 HD DRW	266 (10.5)	–	264 (10.4)	–	264 (10.4)
INTERIOR, mm (in.)	REGULAR CAB LONG BED	DOUBLE CAB STANDARD BED	DOUBLE CAB LONG BED	CREW CAB STANDARD BED	CREW CAB LONG BED
Headroom, front/rear	1095/- (43.1/-)	1093/1013 (43.0/39.9)	1093/1013 (43.0/39.9)	1093/1019 (43.0/40.1)	1093/1019 (43.0/40.1)
Legroom, front/rear	1131/- (44.5/-)	1131/895 (44.5/35.2)	1131/895 (44.5/35.2)	1131/1102 (44.5/43.4)	1131/1102 (44.5/43.4)
Shoulder Room, front/rear	1678/- (66.1/-)	1677/1648 (66.0/64.9)	1677/1648 (66.0/64.9)	1677/1659 (66.0/65.3)	1677/1659 (66.0/65.3)
Hip Room, front/rear	1547/- (60.9/-)	1554/1530 (61.2/60.2)	1554/1530 (61.2/60.2)	1554/1530 (61.2/60.2)	1554/1530 (61.2/60.2)
BED, mm (in.)	REGULAR CAB LONG BED	DOUBLE CAB STANDARD BED	DOUBLE CAB LONG BED	CREW CAB STANDARD BED	CREW CAB LONG BED
Inside Length, at floor	2496 (98.3)	2089 (82.3)	2496 (98.3)	2089 (82.3)	2496 (98.3)
Wall-to-Wall, width	1814 (71.4)	1814 (71.4)	1814 (71.4)	1814 (71.4)	1814 (71.4)
Inside Width, between wheelhousings	1284 (50.6)	1317 (51.9)	1284 (50.6)	1317 (51.9)	1284 (50.6)
Inside Height	533 (21.0)	533 (21.0)	533 (21.0)	533 (21.0)	533 (21.0)
FUEL TANK, L (imp. gal.)	REGULAR CAB LONG BED	DOUBLE CAB STANDARD BED	DOUBLE CAB LONG BED	CREW CAB STANDARD BED	CREW CAB LONG BED
– Gas	136 (29.9)	136 (29.9)	136 (29.9)	136 (29.9)	136 (29.9)
– Diesel	106 (23.3)	111 (24.4)	136 (29.9)	136 (29.9)	136 (29.9)
CARGO VOLUME, L (cu. ft.) ¹	REGULAR CAB LONG BED	DOUBLE CAB STANDARD BED	DOUBLE CAB LONG BED	CREW CAB STANDARD BED	CREW CAB LONG BED
	2365 (83.5)	1970 (69.6)	2365 (83.5)	1970 (69.6)	2365 (83.5)

¹ Cargo and load capacity limited by weight and distribution.



Experience Chevrolet Complete Care, a comprehensive package of owner benefits that are included with every new 2020 Chevrolet Silverado HD leased or purchased in Canada.

Chevrolet Complete Care coverage includes:

2-year/24,000 km¹ Complimentary Lube-Oil-Filter Program²

3-year/60,000 km¹ Base Warranty Coverage³

5-year/100,000 km¹ Powertrain Component Warranty Coverage³

5-year/100,000 km¹ Courtesy Transportation⁴

5-year/100,000 km¹ 24/7 Roadside Assistance⁴

6-year/160,000 km¹ Sheet Metal rust-through perforation coverage³

Additional Complete Care coverage, standard on Silverado HD LT, LTZ and High Country, and available on Silverado HD WT and Custom, includes:

1-month trial of Chevrolet Connected Services and 1 month of OnStar Safety & Security coverage^{5,6}

Chevrolet Connected Access^{5,7} includes 10 years of standard connectivity and enables services such as Vehicle Diagnostics^{5,8} and Dealer Maintenance Notification^{5,8}

Other ownership privileges and programs:⁹

- Chevrolet Protection Plan – the only extended service plan backed by the resources and commitment of General Motors. The Chevrolet Protection Plan may be purchased at the time of vehicle sale or subsequently during the Base Warranty Coverage period.¹⁰
- Chevrolet Owner Centre – Everything you need to know. Anything you need to do. Your Chevrolet Owner Centre makes it easy. Create your account today to get the most out of your new vehicle. Get special alerts and offers, schedule service, review your maintenance schedule, and view how-to videos specifically for your vehicle. All online, anytime. Visit the Owner Centre today to register or take a tour. Find out more at mychevrolet.ca.
- Discount Programs – save on your next vehicle. Students or recent graduates,⁹ people with disabilities⁹ and military personnel⁹ you may be eligible¹¹ for a discount on select new Chevrolet vehicles leased or purchased. Combine your discount with great retail offers for an exceptional value. For full details on all programs offered in Canada, visit programs.gm.ca.
- GM Card[®] – Cardholders may redeem Earnings towards the total purchase price or lease down payment of an eligible new Chevrolet car, truck or crossover. Restrictions and limitations apply. For full program details, visit gmcards.ca.

Chevrolet ownership experience. Chevrolet is committed to enhancing the vehicle shopping and ownership experience through a wide array of programs. Visit chevrolet.ca to build and price, find a vehicle, request a quote, compare vehicles, find financial tools or track your vehicle order. You'll also find information about 24-hour Roadside Assistance, Courtesy Transportation, Customer Assistance, GM Mobility, safety and current incentives.

Important words about this brochure. Some of the equipment shown or described throughout this brochure may be available at extra cost. We have tried to make this brochure comprehensive and factual. We reserve the right, however, to make changes at any time, without notice, in prices, colours, materials, equipment, specifications, models and availability. Specifications, dimensions,

measurements, ratings and other numbers in this brochure and other printed materials provided at the dealership or affixed to vehicles are approximates based on design and engineering drawings, prototypes and laboratory tests. Your vehicle may differ due to variations in manufacture and equipment. Since some information may have been updated since the time of printing, please check with your Chevrolet dealer for complete details. General Motors of Canada Company reserves the right to lengthen or shorten the model year for any product, for any reason, or to start and end model years at different times. Certain vehicle features may lose their usefulness over time due to obsolescence from technological changes. Unless otherwise noted, all claims based on the GM Large Pickup segment and the latest available competitive information. Excludes other GM vehicles.

Engines. Chevrolet products are equipped with engines produced by GM Global Propulsion Systems or other suppliers to GM worldwide. The engines in Chevrolet products may also be used in other GM makes and models.

Assembly. Chevrolet vehicles and their components are assembled or produced by different operating units of General Motors, its subsidiaries or suppliers to GM worldwide. We sometimes find it necessary to produce Chevrolet vehicles with different or differently sourced components than originally scheduled. Since some options may be unavailable when your vehicle is assembled, we suggest you verify that your vehicle includes the equipment you ordered and that, if there were changes, they are acceptable to you.

Fleet orders. Some standard content and owner benefits may be modified or deleted on fleet orders. See dealer for details.

An important note about alterations and warranties. Installations or alterations to the original equipment vehicle (or chassis) as distributed by General Motors are not covered by the New Vehicle Limited Warranty. The special body company, assembler, equipment installer or upfitter is solely responsible for warranties on the body or equipment and any alterations (or any effect of the alterations) to any of the parts, components, systems or assemblies installed by GM. General Motors is not responsible for the safety or quality of design features, materials or workmanship of any alterations by such suppliers.

Trademarks. The marks appearing in this brochure including, but not limited to, General Motors, GM, Chevrolet, the Chevrolet emblem, Silverado and their respective logos, emblems, slogans and vehicle model names and body designs; and other marks such as Duralife, Duramax, Find New Roads, IntelliBeam, myChevrolet, OnStar, the OnStar emblem and StabiliTrak are trademarks of General Motors LLC, OnStar LLC and/or General Motors of Canada Company, its subsidiaries, affiliates or licensors. Allison is a registered trademark of Allison Transmission, Inc. Apple, Apple CarPlay and iPhone are trademarks of Apple Inc., registered in the U.S. and other countries. Bluetooth is a registered trademark of Bluetooth SIG, Inc. Bose is a registered trademark and Richbass is a trademark of the Bose Corporation. Facebook is a registered trademark of Facebook, Inc. © 2019 Sirius XM Canada Inc. "SiriusXM," the SiriusXM logo, channel names and logos are registered trademarks of Sirius XM Radio Inc. and are used under license. All rights reserved. Twitter is a trademark of Twitter, Inc. YouTube is a registered trademark and Google, Android, Google Play and Android Auto are trademarks of Google LLC. Wi-Fi is a registered trademark of Wi-Fi Alliance.

©Copyright 2019 General Motors of Canada Company. All rights reserved. All text, images, graphics, and other materials in this brochure are subject to the copyright and other intellectual property rights of General Motors LLC and/or General Motors of Canada Company. These materials may not be reproduced, distributed or modified without the express written permission of General Motors LLC and/or General Motors of Canada Company. November 2019.



¹ Whichever comes first. ² Limit of two (2) Lube-Oil-Filter services during the program period. Fluid top-offs, inspections, tire rotations, wheel alignments and balancing, etc., are not covered. Additional conditions and limitations apply. See participating dealer for details. ³ Conditions and limitations apply. See Warranty Booklet for details. ⁴ Conditions and limitations apply. See Owner's Manual for details. ⁵ Silverado HD WT and Custom require a factory-installed equipment purchase. ⁶ Properly equipped Chevrolet vehicles are eligible for 1 month of Connected Services trial and OnStar Safety & Security coverage starting at trial activation date; includes emergency and navigation services, Connected Navigation, the Remote Access Plan, plus a 3 GB or 1-month (whichever comes first) data plan trial. Services subject to user terms and limitations; capabilities vary by model and/or vehicle configuration; visit onstar.ca for details. Data plans offered by AT&T or its local service provider. Availability subject to change. GM Canada may modify, extend or terminate offers for any reason, in whole or in part, at any time, without notice. Requires vehicle electrical system (including battery), wireless service and GPS satellite signal to be available and operating for features to function properly. ⁷ Limitations apply. Not transferable. Standard connectivity available to original purchaser for 10 years from the trial activation date for properly equipped vehicles. Visit onstar.ca for details and further plan limitations. Connected Access does not include emergency or security services. Availability of Connected Access and any of its services is dependent on compatible 4G LTE wireless networks and is also subject to change. ⁸ Capabilities vary by model and/or vehicle configuration and service plan. Visit onstar.ca for vehicle availability. Message and data rates may apply. Requires active service, email address on file and enrollment in Vehicle Diagnostics. Not all issues will deliver alerts. On-Demand Diagnostics requires a paid service plan. ⁹ Conditions and limitations apply. ¹⁰ Please work with your dealer to select the plan that is suitable for your driving needs. Dealers are free to set their own prices. ¹¹ Subject to eligibility.

FIND NEW ROADS™

CHEVROLET.CA

