

EQUINOX 2020

CHEVROLET 



Equinox Premier in Midnight Blue Metallic (extra-cost colour) with available features.

YOUR INVITATION TO INDULGE.

The award-winning Equinox strikes the perfect balance between design and technology. From any angle, the sculpted exterior makes a stunning statement. Within the spacious and refined interior, intuitive technology keeps you connected and entertained. The turbocharged engine delivers performance and efficiency for that daily drive or weekend getaway. And with additional standard safety features for 2020, the intelligently designed Equinox is everything you need, to do everything you want.

FIND NEW ROADS™



**J.D. POWER NAMED EQUINOX
"MOST DEPENDABLE COMPACT SUV IN THE U.S."¹**
Based on survey of 2016 vehicles.

¹ The Chevrolet Equinox received the fewest reported problems in its segment in one or more J.D. Power U.S. Vehicle Dependability Studies from 2018–19. Depending on study year, awards based on 2015–16 models. See jdpower.com/awards for 2019 details.

MODELS

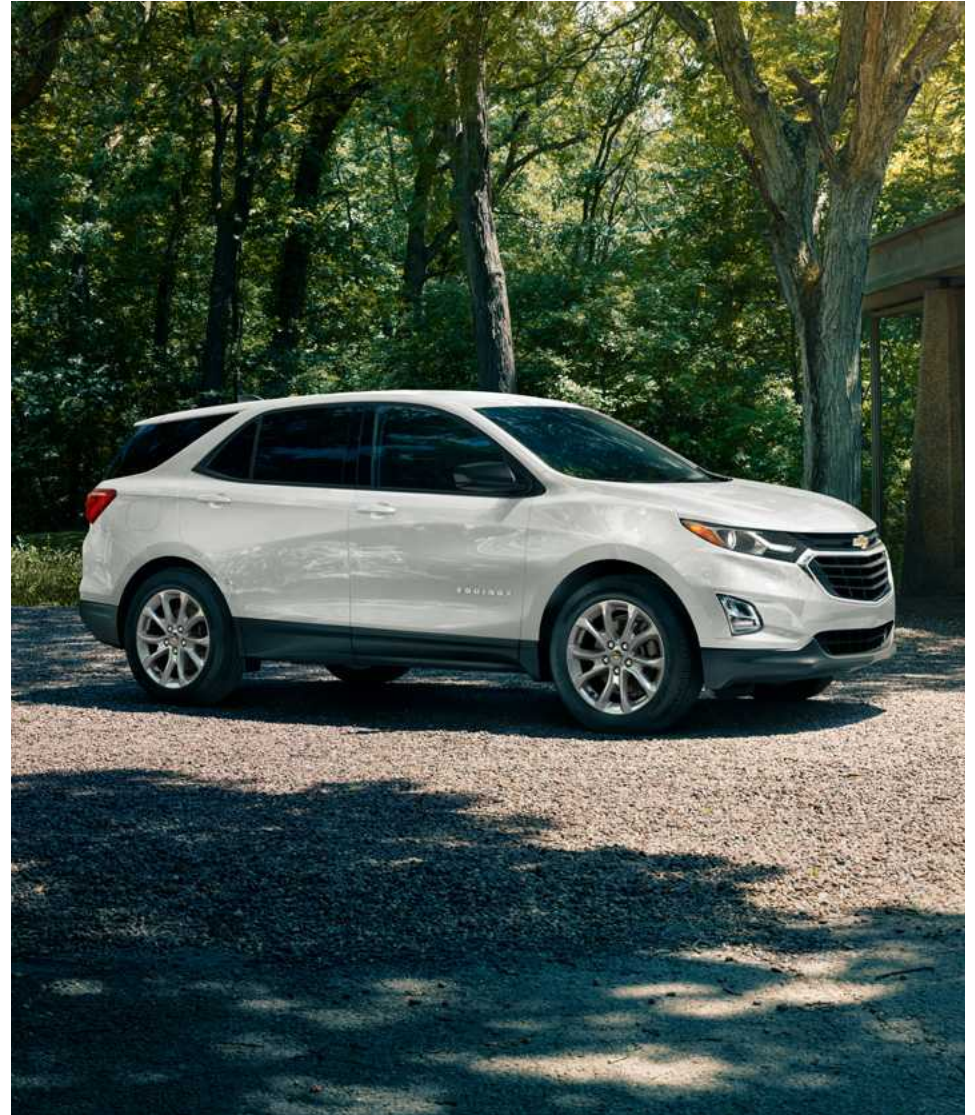
LS

From point A to point B and anywhere in between, the well-equipped Equinox LS is ready for your next adventure.

Newly standard safety technology includes Automatic Emergency Braking,¹ Following Distance Indicator,¹ Forward Collision Alert,¹ Front Pedestrian Braking,¹ Lane Keep Assist with Lane Departure Warning,¹ and IntelliBeam[®] headlamps.

Signature LED daytime running lamps, power remote control heated rear-view mirrors, heated front seats, Keyless Open and Start and remote vehicle starter system are also standard.

Equinox LS in Summit White with available features.



¹ Read the vehicle Owner's Manual for important feature limitations and information.

MODELS

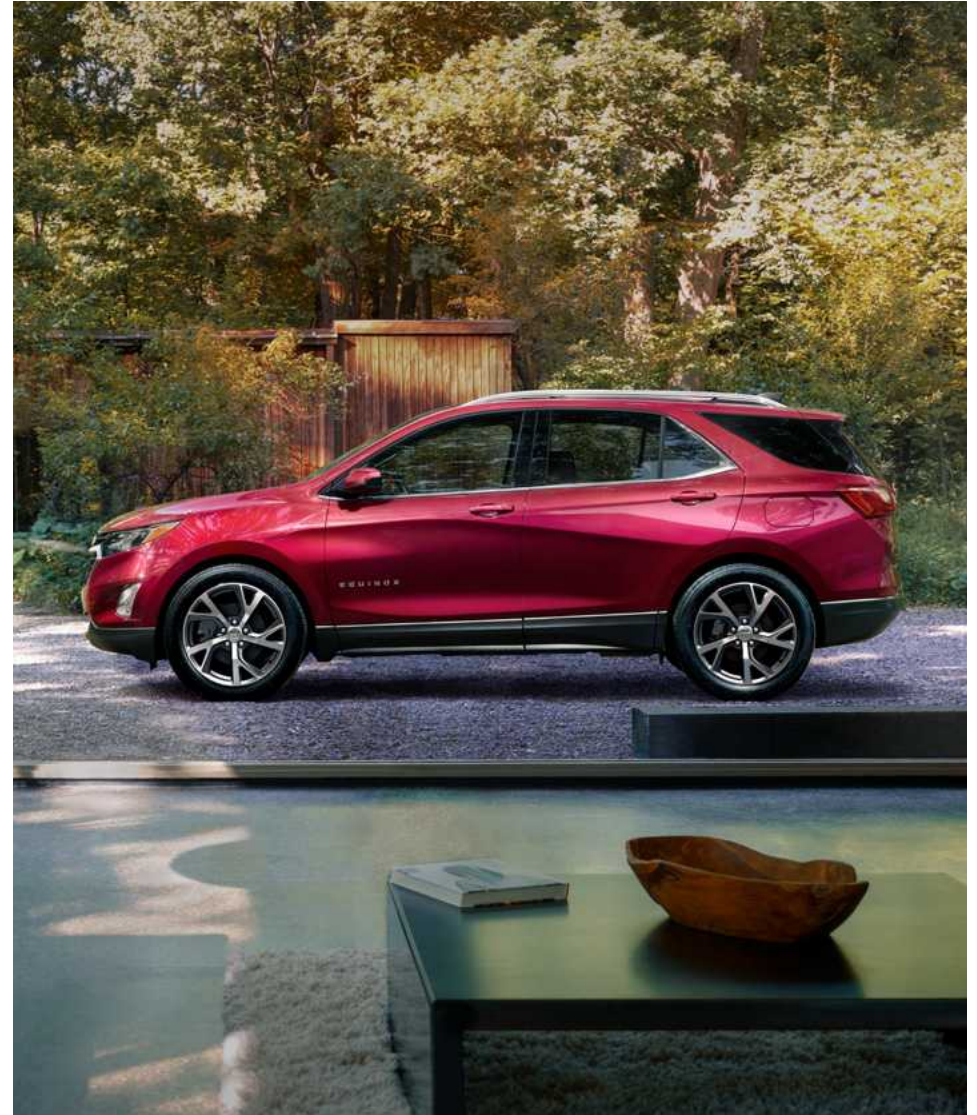
LT

Equinox LT lets you soak in the comforts of home while you're turning heads wherever you go.

High-intensity discharge headlamps light up the street, while deep-tinted rear glass and bright lower window trim add to the aesthetic. Eye-catching 18-in. machined-face aluminum wheels with painted pockets are available for an even more expressive appearance. These wheels are also included on LT with the optional 2.0L engine.

You'll also enjoy the convenience of an 8-way power driver seat, overhead storage for sunglasses and a Driver Information Centre with multi-colour display.

Equinox LT in Cajun Red Tintcoat (extra-cost colour) with available features.



MODELS

PREMIER

Have you ever wondered what it's like to enjoy true understated refinement? Equinox Premier – with standard all-wheel drive – is the complete package.

Exterior highlights include 18-in. machined-face aluminum wheels, fog lamps, LED headlamps and tail lamps, chrome mirror caps and a hands-free programmable power liftgate.

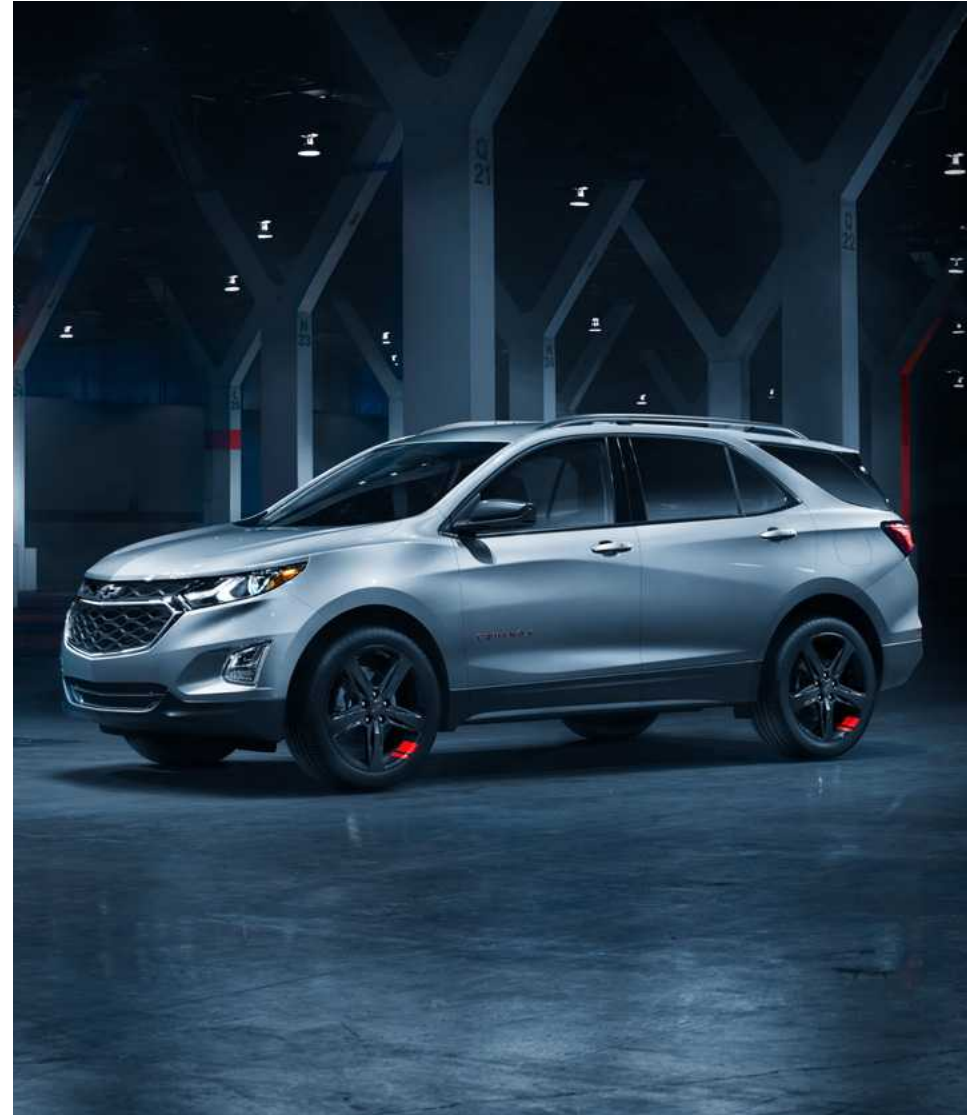
The premium look and feel continues inside with perforated leather-appointed seating surfaces and dual-zone climate controls. Memory settings on the driver door can be programmed to adjust the seat and exterior mirror positions for two different drivers.

Equinox Premier in Iridescent Pearl Tricoat (extra-cost colour) with available features.



SPECIAL EDITIONS

Equinox Premier in Silver Ice Metallic with available Redline Edition.



REDLINE EDITION

Turn up the heat with Equinox Redline Edition.

This special edition, available on LT and Premier, includes Black- and Red-accented 19-in. aluminum wheels and badging, and Black mirror caps, grille, window trim and bowtie emblems.

SPECIAL EDITIONS

MIDNIGHT EDITION

Black is the new Black, especially when it's the Chevrolet Equinox Midnight Edition.

The Midnight Edition, available on LT, starts with a Mosaic Black Metallic exterior and includes a Black grille, bowtie emblems and mirror caps and Jet Black perforated leather-appointed seating surfaces. Unique 19-in. Gloss Black-painted aluminum wheels provide the finishing touch. You get the picture.

Equinox LT in Mosaic Black Metallic (extra-cost colour) with available Midnight Edition.



Equinox Premier in Cajun Red
Tintcoat (extra-cost colour)
with available features.

EXTERIOR DESIGN

YOU'LL GET NOTICED.

With its confident balance of sportiness and sophistication, Equinox will command attention on any road. The chrome-accented grille (with additional chrome bars on Premier) adds upscale distinction.



Heated power mirrors with integrated turn signal indicators and driver-side auto-dimming feature. Standard on Premier (shown) and available on LT.

LED tail lamps. Standard on Premier.

LED daytime running lamps standard on all models and LED headlamps standard on Premier.

Dual-outlet exhaust with bright tips. Included with available 2.0L engine.



Equinox Premier interior in Brandy with Jet Black accents and available features.

**YOU'LL FEEL LIKE IT'S
CRAFTED JUST FOR YOU.**

Equinox Premier interior in Brandy with Jet Black accents and available features.



¹ Does not detect people or items. Always check rear seat before exiting.

INTERIOR DESIGN

WHO DOESN'T WANT TO TRAVEL FIRST CLASS?

Equinox is one indulgent SUV, with ample **room for five passengers**. Rear seatbacks can be placed in two positions – fully upright or slightly reclined – via an easy-to-reach manual lever.

With the touch of a button, all models offer the luxury of standard **heated**

driver and front passenger seats. Ventilated driver and front passenger seats, as well as heated rear outboard seats, are available on Premier. The accommodations are spacious, with an impressive 1013 mm (39.9 in.) of rear-seat legroom. And upscale details will make every ride feel like a vacation.

From available Galvano chrome to soft ambient lighting, Equinox Premier has the style you'll love. Premium Cloth on LS and LT or **perforated leather-appointed seating** on Premier further reflects this exceptional level of craftsmanship.

Rear Seat Reminder¹ activates when the rear doors are opened and closed up to 10 minutes before or anytime while your vehicle is on, so when you turn off the engine under certain conditions, you will get a reminder to double-check for valuables left behind.

myChevrolet® App¹ available to download, includes remote vehicle start?

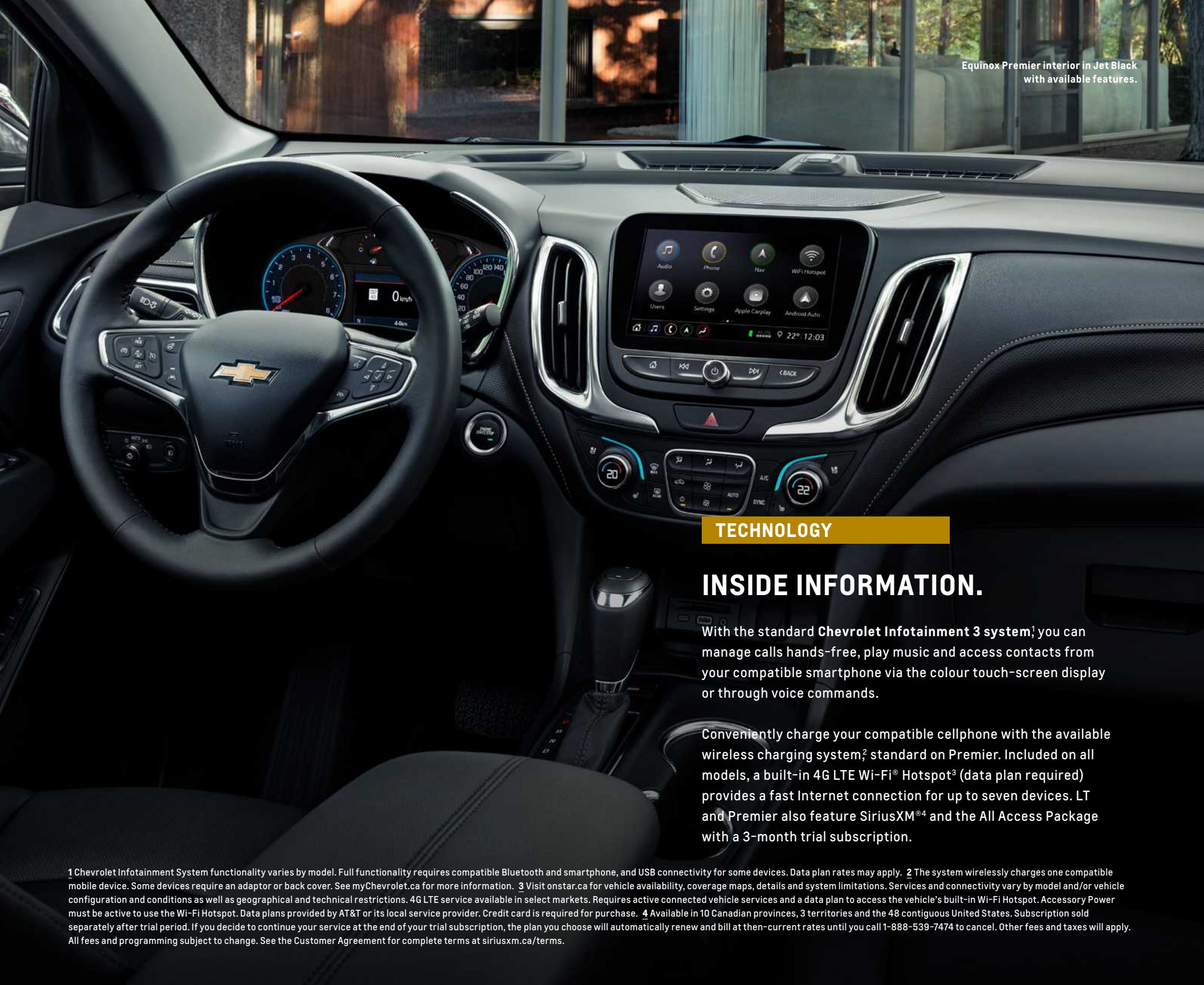
Multi-colour Driver Information Centre. Standard on LT and Premier.

Apple CarPlay^{®3} integration for your iPhone® (shown) and Android Auto^{™4} compatibility.

Teen Driver technology.



¹ Available on select Apple and Android devices. Service availability, features and functionality are subject to limitations and vary by model and/or vehicle configuration, device and the plan in which you are enrolled. Device data connection required. Visit onstar.ca for more details. ² Requires subscription to Remote Access Plan or Premium Access Plan. Services are subject to user terms and limitations and vary by model and/or vehicle configuration. Remote start requires GM factory-installed and enabled remote start system. Visit onstar.ca for more details. ³ Vehicle user interface is a product of Apple and its terms and privacy statements apply. Requires compatible iPhone and data plan rates apply. ⁴ Vehicle user interface is a product of Google and its terms and privacy statements apply. Requires the Android Auto app on Google Play and an Android compatible smartphone running Android 5.0 Lollipop or higher. Data plan rates apply.



Equinox Premier interior in Jet Black with available features.

TECHNOLOGY

INSIDE INFORMATION.

With the standard **Chevrolet Infotainment 3 system**¹, you can manage calls hands-free, play music and access contacts from your compatible smartphone via the colour touch-screen display or through voice commands.

Conveniently charge your compatible cellphone with the available wireless charging system², standard on Premier. Included on all models, a built-in 4G LTE Wi-Fi[®] Hotspot³ (data plan required) provides a fast Internet connection for up to seven devices. LT and Premier also feature SiriusXM^{®4} and the All Access Package with a 3-month trial subscription.

¹ Chevrolet Infotainment System functionality varies by model. Full functionality requires compatible Bluetooth and smartphone, and USB connectivity for some devices. Data plan rates may apply. ² The system wirelessly charges one compatible mobile device. Some devices require an adaptor or back cover. See myChevrolet.ca for more information. ³ Visit onstar.ca for vehicle availability, coverage maps, details and system limitations. Services and connectivity vary by model and/or vehicle configuration and conditions as well as geographical and technical restrictions. 4G LTE service available in select markets. Requires active connected vehicle services and a data plan to access the vehicle's built-in Wi-Fi Hotspot. Accessory Power must be active to use the Wi-Fi Hotspot. Data plans provided by AT&T or its local service provider. Credit card is required for purchase. ⁴ Available in 10 Canadian provinces, 3 territories and the 48 contiguous United States. Subscription sold separately after trial period. If you decide to continue your service at the end of your trial subscription, the plan you choose will automatically renew and bill at then-current rates until you call 1-888-539-7474 to cancel. Other fees and taxes will apply. All fees and programming subject to change. See the Customer Agreement for complete terms at siriusxm.ca/terms.

Equinox Premier in Nightfall Grey Metallic (extra-cost colour) with available 2.0L engine and other available features.¹

¹ Chevrolet Infotainment System functionality varies by model. Full functionality requires compatible Bluetooth and smartphone, and USB connectivity for some devices. Data plan rates may apply. ² Requires subscription to OnStar Guidance Plan, Premium Access Plan, or Navigation Add-On. Connected Navigation and Real-time Points of Interest (POI) only available on properly equipped vehicles. Services are subject to user terms and limitations, and vary by model and/or vehicle configuration. Visit onstar.ca for more details. ³ Read the vehicle Owner's Manual for important feature limitations and information. ⁴ Cargo and load capacity limited by weight and distribution.

UNIQUELY CANADIAN

Equinox has been designed and well-appointed for the extremes of northern climates we experience in Canada. Enjoy the comfort and convenience of heated front bucket seats, heated exterior rear-view mirrors and a remote vehicle starter system, all standard on every 2020 Equinox.

Take Equinox LT to an even higher level with the available and exclusive-to-Canada **LT True North Edition**. In addition to all Confidence & Convenience Package features, the LT True North Edition includes the

Chevrolet Infotainment 3 Plus system¹ with 8-in. diagonal HD colour touch-screen display and Connected Navigation²; HD Rear Vision Camera³; SD card reader, 120-volt AC power outlet and power sunroof.

The **Premier True North Edition** includes all the features of the Confidence & Convenience II Package, plus the Chevrolet Infotainment 3 Premium system¹ with Connected Navigation²; Bose premium sound system and 19-in. bright machined-face aluminum wheels.

Available panoramic power sunroof
with power sunshade.

Heated front seats standard on all models.

Available heated rear outboard seat switches
and 120-volt AC power outlet in rear console.





VERSATILITY

LOAD IT UP AND PACK IT IN.

Some days, travelling light just isn't an option. Not to worry, Equinox has you covered. The 60/40 split-folding rear seats fold virtually flat to create up to **1810 L (63.9 cu. ft.) of maximum cargo capacity**¹. And conveniently placed cargo hooks help keep luggage secure.

There's a place for everything in Equinox. In addition to the **LED-lit centre console compartment**, you'll find dedicated storage for a cellphone, four cupholders, map pockets and an available flip-down compartment for sunglasses. There's also water bottle storage in all four doors.

¹ Cargo and load capacity limited by weight and distribution.

Programmable liftgate. Standard on Premier and available on LT.

Hands-free power liftgate. Standard on Premier.

Easy-access rear storage compartment.

Umbrella storage in both front door pockets.



SAFETY AND DRIVER ASSISTANCE

READY AND VIGILANT.



Adaptive Cruise Control – Camera. Using camera technology, this feature can automatically adapt cruise control speed to maintain a following gap to vehicles detected ahead. Available on Premier.



Front Pedestrian Braking. At speeds below 80 km/h, if an imminent collision with a pedestrian directly ahead is detected, the feature can alert you and can even apply last-second emergency braking. Performance is limited at night. Standard on all models.



Automatic Emergency Braking. At speeds below 80 km/h, if an imminent front-end collision is detected with a vehicle you are following, the feature can alert you and can automatically apply hard emergency braking or enhance driver hard braking. Standard on all models.



Following Distance Indicator and Forward Collision Alert. These features monitor how close your vehicle is to the detected vehicle in front of you and can alert you to a potential crash. Standard on all models.



Lane Keep Assist with Lane Departure Warning. At speeds above 60 km/h, this feature monitors road lines when identifiable and can gently turn the steering wheel to help keep the vehicle in its lane or provide an alert if a lane marker is unintentionally crossed. Standard on all models.



Lane Change Alert with Side Blind Zone Alert. This feature can provide side mirror alerts when it detects fast-approaching vehicles in adjacent lanes as well as moving vehicles in the side mirror blind zones. Standard on Premier. Available on LT.



Rear Cross Traffic Alert. This feature can alert you to detected vehicles crossing behind your Equinox when backing up. Standard on Premier. Available on LT.



Rear Vision Camera. When travelling in Reverse at low speeds, this feature helps provide a view of the area immediately behind your Equinox. Standard on all models.

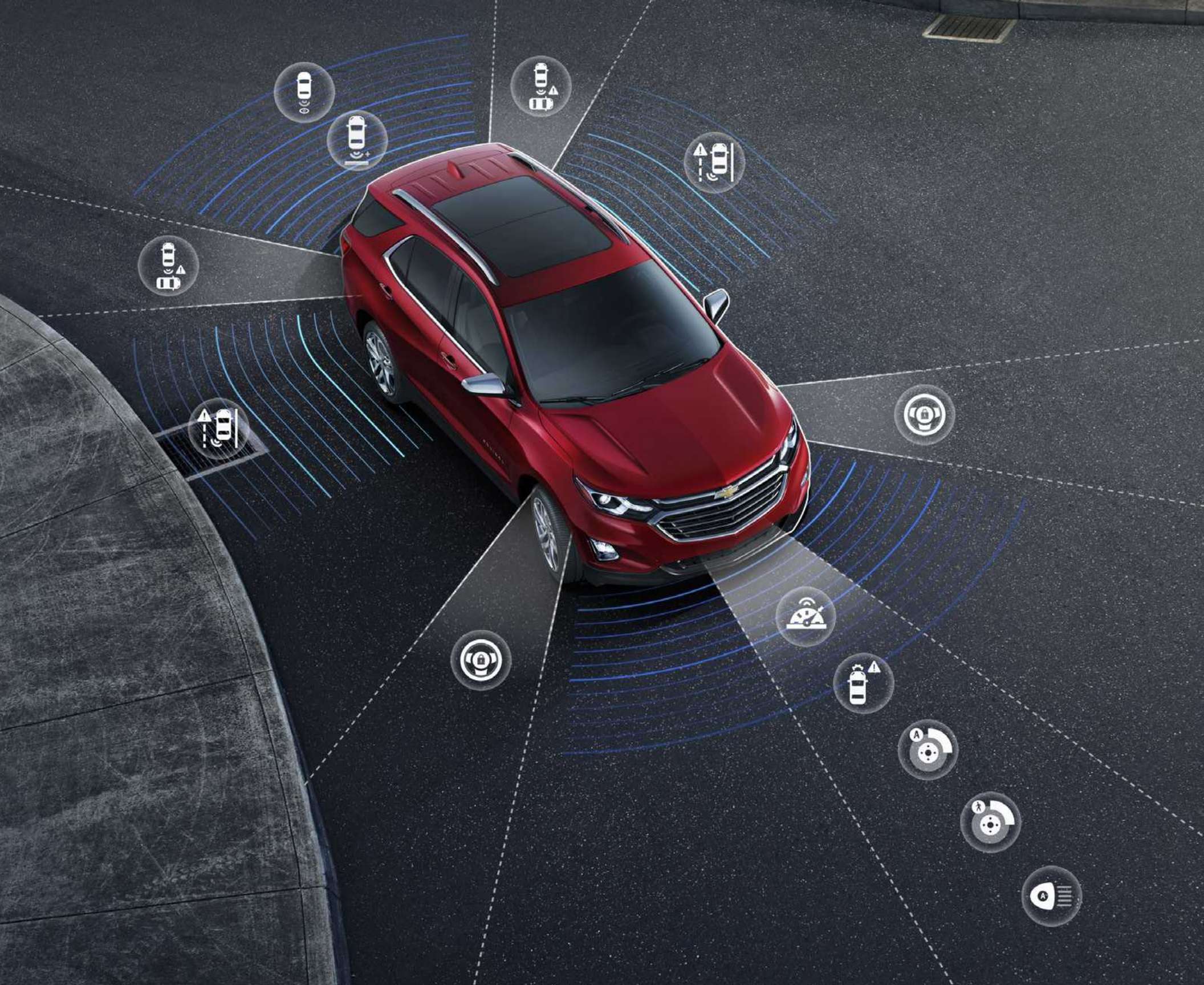


Rear Park Assist. When travelling in Reverse at low speeds, this feature can provide distance alerts when it detects certain stationary objects in close proximity behind the vehicle. Standard on Premier. Available on LT.



IntelliBeam headlamps. When oncoming headlamps are sensed or when tail lamps are detected, this feature intuitively adjusts between low and high beams. Standard on all models.

Safety starts with you. Safety or driver assistance features are no substitute for the driver's responsibility to operate the vehicle in a safe manner. The driver should remain attentive to traffic, surroundings and road conditions at all times. Visibility, weather and road conditions may affect feature performance. Read the vehicle Owner's Manual for more important feature limitations and information.



Equinox Premier in Nightfall Grey
Metallic (extra-cost colour)
with available features



OVERALL VEHICLE SCORE FOR SAFETY!

— U.S. National Highway Traffic Safety Administration



SAFETY

A FIVE-STAR RATING IS JUST THE STARTING POINT.

The 2020 Equinox has received a **5-Star Overall Vehicle Score for safety** from the U.S. National Highway Traffic Safety Administration¹ And with an abundance of newly standard safety features, Equinox will help you feel confident every time you get behind the wheel.

¹U.S. Government 5-Star Safety Ratings are part of the National Highway Traffic Safety Administration's (NHTSA's) New Car Assessment Program (www.nhtsa.gov).

Safety Alert Seat¹ for driver.
Available on Premier.

HD Surround Vision¹
Available on Premier.

High-strength steel and
robust body structure.



¹ Safety or driver assistance features are no substitute for the driver's responsibility to operate the vehicle in a safe manner. The driver should remain attentive to traffic, surroundings and road conditions at all times. Visibility, weather and road conditions may affect feature performance. Read the vehicle Owner's Manual for more important feature limitations and information.

Equinox Premier in Cajun Red
Tintcoat (extra-cost colour)
with available features.



¹ Fuel consumption estimates based on GM testing in accordance with Government of Canada approved test methods. Refer to vehicles.nrcan.gc.ca for details. Your actual fuel consumption will vary.

PERFORMANCE

EMPOWER YOUR DRIVE.

The standard **1.5L turbocharged 4-cylinder engine** uses the technologies of Variable Valve Timing and Direct Injection to deliver responsive performance with unexpected efficiency. The 1.5L turbo puts 170 horsepower at your command, along with 203 lb.-ft. of torque. It also offers estimated fuel consumption ratings of

7.7 L/100 km highway and 8.9 L/100 km city (FWD) and 8.0 L/100 km highway and 9.3 L/100 km city (AWD)!¹

The available **2.0L turbo engine** generates 252 horsepower and 260 lb.-ft. of torque. Estimated fuel consumption ratings are 8.3 L/100 km highway and 10.9 L/100 km city!¹

Available exclusively with the 2.0L turbocharged engine, an advanced **9-speed automatic transmission** is designed to help keep the engine operating at near peak efficiency.

Stop/start engine technology, standard on every Equinox, automatically shuts down the engine as you come to a stop under certain driving conditions, such as a stoplight. The engine seamlessly restarts when you take your foot off the brake.

CAPABILITY

READY FOR A GREAT GETAWAY?

A properly equipped Equinox will tow up to 1588 kg (3500 lb.)! So bring on the Jet Skis, small campers or boat. **Trailer Sway Control**, **Hill Start Assist**² with **Automatic Vehicle Hold** and factory-installed **trailer equipment** are all included with the available 2.0L turbo engine. And with available **HD Surround Vision**², you can choose a rear camera view to help when hooking up a trailer.

The available **switchable all-wheel drive** enhances traction and control on slippery or snow-covered roads. You can leave switchable AWD on year-round, since the rear wheels only engage when the system senses reduced traction. In FWD mode, AWD components completely disengage for improved fuel efficiency.

Equinox Premier in Nightfall Grey Metallic (extra-cost colour) with available 2.0L engine and other available features.



¹ Requires available 2.0L engine and trailer equipment. Before you buy a vehicle or use it for trailering, carefully review the Trailering section of the Owner's Manual. The weight of passengers, cargo and options or accessories may reduce the amount you can tow. ² Read the vehicle Owner's Manual for important feature limitations and information.

ACCESSORIES



EXTERIOR COLOURS



G1W – Iridescent Pearl Tricoat^{1,2}



G60 – Pacific Blue Metallic^{1,2}



G7Q – Nightfall Grey Metallic¹



G9K – Satin Steel Metallic^{1,2,3}



GAN – Silver Ice Metallic



GAV – Chocolate Metallic^{1,2}



GAZ – Summit White



GB8 – Mosaic Black Metallic¹



GLL – Cayenne Orange Metallic¹



GLU – Midnight Blue Metallic¹



GPJ – Cajun Red Tintcoat^{1,2}

¹ Available at extra cost. ² Not available on LS. ³ Not available on Premier.

MODELS



Medium Ash Grey Premium Cloth



17" painted-aluminum wheels (RSB)
Standard on LS

LS Equinox LS includes these features:

MECHANICAL

Brakes – 4-wheel disc brakes with Duralife® brake rotors, Anti-lock Braking System (ABS), Brake Assist and Hill Start Assist¹; electronic parking brake

Engine – 1.5L turbocharged DOHC I-4 with Variable Valve Timing (VVT), Direct Injection and Auto Stop/Start technology

StabiliTrak® – Electronic Stability Control System with Traction Control

Transmission – 6-speed automatic, electronically controlled with overdrive and Driver Shift Control

EXTERIOR

Daytime running lamps – LED

Door handles – body-colour

Fuel filler – capless fuelling

Glass – solar-absorbing tinted and acoustic-laminated windshield

Headlamps – halogen, automatic on/off with automatic delay

IntelliBeam headlamps – automatic high beam on/off

Mirrors – power remote control, heated with Black caps

Tires – P225/65R17 all-season¹

INTERIOR

Air conditioning – manual, single-zone

Audio – 6-speaker system

Automatic Emergency Braking¹

Cruise control – electronic with set and resume speed

Door locks – power, programmable with lock-out protection and manual rear door child security

Driver Information Centre – 3.5-in. diagonal monochromatic display

Entertainment – Chevrolet Infotainment 3 system² with 7-in. diagonal colour touch-screen, AM/FM stereo, Bluetooth® audio streaming³ for two active devices, voice command pass-through to compatible phone, and Apple CarPlay^{®4} and Android Auto^{™5} compatibility

Following Distance Indicator¹ and Forward Collision Alert¹

INTERIOR (CONTINUED)

Front Pedestrian Braking¹

Keyless Open and Start – includes extended-range Remote Keyless Entry

Lane Keep Assist with Lane Departure Warning¹

Media – USB ports⁶; one type-A and one type-C, and auxiliary input jack in front centre stack storage area; two type-A, charge-only, on rear of centre console

Rear Vision Camera¹

Seats – driver and front passenger 4-way manual adjuster
– heated driver and front passenger


Steering column – manual tilt and telescopic

Steering wheel – 3-spoke, deluxe with mounted audio, cruise and phone controls

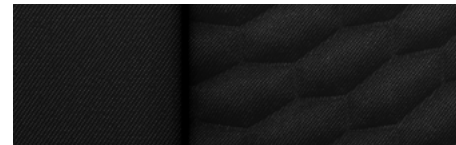
Theft-deterrent system – unauthorized entry

Vehicle starter system – remote

Windows – power with driver express-up/-down, all others express-down

¹ Read the vehicle Owner's Manual for important feature limitations and information. ² Chevrolet Infotainment System functionality varies by model. Full functionality requires compatible Bluetooth and smartphone, and USB connectivity for some devices. Data plan rates may apply. ³ Visit my.gm.ca/Chevrolet/en/learnAbout/bluetooth for more information. Full Bluetooth feature functionality varies by device, model and/or vehicle configuration, and software version. ⁴ Vehicle user interface is a product of Apple and its terms and privacy statements apply. Requires compatible iPhone and data plan rates apply. ⁵ Vehicle user interface is a product of Google and its terms and privacy statements apply. Requires the Android Auto app on Google Play and an Android compatible smartphone running Android 5.0 Lollipop or higher. Data plan rates apply. ⁶ Not compatible with all devices. † All-season tires may not satisfy winter tire requirements in all regions of the country. Tires specifically designed for severe winter conditions and marked with the "winter tire" symbol  may be required during certain months or in certain regions. Contact your Provincial, Municipal or local road authority for information regarding which tires are required in your particular area.

MODELS (CONTINUED)



Jet Black Premium Cloth (shown)



Medium Ash Grey Premium Cloth



Jet Black Perforated Leather-Appointed Seating Surfaces²

LT In addition to or replacing LS features, LT includes:

EXTERIOR

Glass – deep-tinted on all windows behind front doors

Headlamps – high-intensity discharge (HID)

Mirrors – power remote control, heated with body-colour caps

Mouldings – bright lower window trim

INTERIOR

Console – overhead storage for sunglasses

Driver Information Centre – 4.2-in. diagonal multi-colour display

Seat – power 8-way driver adjuster with power 2-way lumbar control

Seat release – second-row mechanical levers in cargo area

SiriusXM^{®1} – All Access Package with 3-month trial subscription



17" painted-aluminum wheels (RSB)
Standard on LT with 1.5L engine



18" machined-face aluminum wheels
with painted pockets (RV6)
Available on LT with 1.5L engine
Included on LT with 2.0L engine



19" Black-painted aluminum wheels
with Red accents (RZA)
Included on LT with Redline Edition



19" Gloss Black-painted aluminum
wheels (PJI)
Included on LT with Midnight Edition

¹ Available in 10 Canadian provinces, 3 territories and the 48 contiguous United States. Subscription sold separately after trial period. If you decide to continue your service at the end of your trial subscription, the plan you choose will automatically renew and bill at then-current rates until you call 1-888-539-7474 to cancel. Other fees and taxes will apply. All fees and programming subject to change. See the Customer Agreement for complete terms at siriusxm.ca/terms. ² Requires available Midnight Edition.

MODELS (CONTINUED)



Jet Black Perforated Leather-Appointed Seating Surfaces

Medium Ash Grey Perforated Leather-Appointed Seating Surfaces



Brandy Perforated Leather-Appointed Seating Surfaces⁹ (shown)



18" machined-face aluminum wheels with painted pockets (RV6)
Standard on Premier with 1.5L engine



19" bright machined-face aluminum wheels with Sparkle Silver-painted pockets (PJT)
Available on Premier with 1.5L engine¹⁰
Included on Premier with 2.0L engine



19" Black-painted aluminum wheels with Red accents (RZA)
Included on Premier with Redline Edition

PREMIER In addition to or replacing LT features, Premier includes:

MECHANICAL

Drive – all-wheel (AWD) on/off selectable

EXTERIOR

Fog lamps

Headlamps – LED

Liftgate – power, programmable, hands-free

Mirrors – power remote control, heated with integrated turn signal indicators, driver-side auto-dimming feature and chrome caps

Roof-mounted side rails – bright

Tail lamps – LED

INTERIOR

Air conditioning – automatic, dual-zone with individual climate settings for driver and front passenger; rear console air vents

Entertainment – Chevrolet Infotainment 3 Plus system¹ with 8-in. diagonal HD colour touch-screen, AM/FM stereo, Bluetooth[®] audio streaming² for two active devices, Apple CarPlay^{®3} and Android Auto^{™4} compatibility, enhanced voice recognition and in-vehicle apps⁵

Lane Change Alert with Side Blind Zone Alert⁶

Media – USB ports⁷, two type-A in floor console storage bin

Memory – recalls two pre-sets for power driver seat and exterior mirrors

Power outlet – 120-volt AC on rear of centre console

Rear Cross Traffic Alert⁶

Rear Park Assist⁶

Rear Vision Camera⁶ – HD

Wireless charging⁸

¹ Chevrolet Infotainment System functionality varies by model. Full functionality requires compatible Bluetooth and smartphone, and USB connectivity for some devices. Data plan rates may apply. ² Visit my.gm.ca/Chevrolet/en/learnAbout/bluetooth for more information. Full Bluetooth feature functionality varies by device, model and/or vehicle configuration, and software version. ³ Vehicle user interface is a product of Apple and its terms and privacy statements apply. Requires compatible iPhone and data plan rates apply. ⁴ Vehicle user interface is a product of Google and its terms and privacy statements apply. Requires the Android Auto app on Google Play and an Android compatible smartphone running Android 5.0 Lollipop or higher. Data plan rates apply. ⁵ Additional data plan rates may apply. Available on select GM vehicles with compatible hardware. Third-party trademarks are the property of their respective third-party owners and used under agreement. Visit onstar.ca for service limitations, availability and service plan details. Requires active connected vehicle services and data plan or connection to an external Wi-Fi Hotspot. Vehicle data plans provided by AT&T or its local service provider. Services are subject to user terms and limitations. Visit onstar.ca for more details. ⁶ Read the vehicle Owner's Manual for important feature limitations and information. ⁷ Not compatible with all devices. ⁸ The system wirelessly charges one compatible mobile device. Some devices require an adaptor or back cover. See myChevrolet.ca for more information. ⁹ Not available with Cayenne Orange Metallic or Cajun Red Tintcoat exterior colours. ¹⁰ Requires available Premier True North Edition.

SPECIFICATIONS

● STANDARD ○ AVAILABLE – NOT AVAILABLE

	LS	LT	PREMIER
SAFETY & SECURITY			
Airbags ¹ – dual-stage frontal airbags for driver and front passenger; seat-mounted side-impact airbags for driver and front passenger; head-curtain airbags for front and rear outboard seating positions; includes front Passenger Sensing System for frontal passenger airbag	●	●	●
Automatic Emergency Braking ²	●	●	●
Door locks – rear doors, child security	●	●	●
Following Distance Indicator ² and Forward Collision Alert ²	●	●	●
Front Pedestrian Braking ²	●	●	●
Lane Change Alert with Side Blind Zone Alert ² (requires available Confidence & Convenience Package on LT)	–	○	●
Lane Keep Assist with Lane Departure Warning ²	●	●	●
OnStar Safety & Security Plan coverage ³ for 1 month from the trial activation date, which includes Automatic Crash Response, Stolen Vehicle Assistance, Roadside Assistance and Turn-by-Turn Navigation	●	●	●
Rear Cross Traffic Alert ² (requires available Confidence & Convenience Package on LT)	–	○	●
Rear Park Assist ² (requires available Confidence & Convenience Package on LT)	–	○	●
Rear Vision Camera ²	●	●	–
Rear Vision Camera ² – HD (requires available True North Edition or Redline Edition on LT)	–	○	●
Surround Vision ² – HD (includes HD Rear Vision Camera; requires available Confidence & Convenience II Package)	–	–	○
Safety Alert Seat for driver ² (requires available Confidence & Convenience II Package)	–	–	○
Safety restraints – 3-point belts for all seating positions and front seat belt pre-tensioners – LATCH system (Lower Anchors and Tethers for Children), for child restraint systems	●	●	●
StabiliTrak – Electronic Stability Control System	●	●	●
Teen Driver technology	●	●	●
Theft-deterrent system – electronic immobilizer – unauthorized entry	●	●	●
Tire Pressure Monitoring System – with Tire Fill Alert (does not monitor spare tire)	●	●	●
Traction Control – electronic, full-function, all-speed	●	●	●
MECHANICAL			
Battery – maintenance-free with run-down protection	●	●	●
Brakes – power, 4-wheel disc with Duralife rotors – 4-wheel Anti-lock Braking System (ABS) with Panic Brake Assist and Hill Start Assist; ² electronic parking brake	●	●	●
Drive – front-wheel (FWD)	●	●	–
– all-wheel (AWD) on/off selectable; included with available 2.0L engine on LT	○	○	●

	LS	LT	PREMIER
MECHANICAL (CONTINUED)			
Engine – 1.5L turbocharged DOHC I-4 with Variable Valve Timing (VVT) and Direct Injection; 170 hp @ 5600 rpm, 203 lb.-ft. of torque @ 2000-4000 rpm	●	●	●
– 2.0L turbocharged DOHC I-4 with Variable Valve Timing (VVT) and Direct Injection; 252 hp @ 5500 rpm, 260 lb.-ft. of torque @ 2500-4500 rpm; includes trailering equipment on LT and Premier; includes AWD and 18" machined-face aluminum wheels with painted pockets (RV6) on LT; includes 19" bright machined-face aluminum wheels with Sparkle Silver-painted pockets (PJT) on Premier – Auto Stop/Start feature	–	○	○
Engine block heater	○	○	○
Exhaust – aluminized stainless steel – single-outlet	●	●	●
– dual-outlet with bright tips (requires available 2.0L engine)	–	○	○
Steering – power, electric, rack-and-pinion, variable-assist	●	●	●
Suspension – 4-wheel independent; front, MacPherson strut; rear, 4-link	●	●	●
Trailering equipment – includes factory trailer hitch and Tow/Haul mode (requires available 2.0L engine)	–	○	○
Transmission – 6-speed automatic with overdrive and Driver Shift Control	●	●	●
– 9-speed automatic with overdrive and Driver Shift Control (requires available 2.0L engine)	–	○	○
EXTERIOR			
Active aero shutters	●	●	●
Antenna – Black	●	●	–
– body-colour	–	–	●
Door handles – body-colour	●	●	–
– chrome with body-colour insert	–	–	●
Fuel filler – capless fuelling	●	●	●
Glass – acoustic-laminated windshield	●	●	●
– solar-absorbing, tinted	●	●	●
– solar-absorbing, deep-tinted on all windows behind front doors (requires available LS Convenience Package on LS)	○	●	●
Liftgate – manual	●	●	–
– power, programmable (requires available Confidence & Convenience Package on LT)	–	○	–
– power, programmable, hands-free	–	–	●
Lighting – LED daytime running lamps	●	●	●
– halogen headlamps	●	–	–
– High-Intensity Discharge (HID) headlamps	–	●	–
– LED headlamps	–	–	●
– automatic on/off with automatic delay	●	●	●
– IntelliBeam headlamps – automatic high beam on/off	●	●	●
– fog lamps (requires available Confidence & Convenience Package on LT)	–	○	●
– LED tail lamps	–	–	●


1 A NOTE ON CHILD SAFETY: Always use seat belts and the correct child restraint for your child's age and size, even with airbags. Even in vehicles equipped with the Passenger Sensing System, children are safer when properly secured in a rear seat in the appropriate infant, child or booster seat. Never place a rear-facing infant restraint in the front seat of any vehicle equipped with an active frontal airbag. See your vehicle Owner's Manual and the child safety seat instructions for more safety information. **2** Read the vehicle Owner's Manual for important feature limitations and information. **3** Properly equipped Chevrolet vehicles are eligible for 1 month of Connected Services trial and OnStar Safety & Security coverage starting at trial activation date; includes emergency and navigation services, Connected Navigation, the Remote Access Plan, plus a 3 GB or 1-month (whichever comes first) data plan trial. Services subject to user terms and limitations; capabilities vary by model and/or vehicle configuration; visit onstar.ca for details. Data plans offered by AT&T or its local service provider. Availability subject to change. GM Canada may modify, extend or terminate offers for any reason, in whole or in part, at any time, without notice. Requires vehicle electrical system (including battery), wireless service and GPS satellite signal to be available and operating for features to function properly.

SPECIFICATIONS (CONTINUED)

● STANDARD ○ AVAILABLE – NOT AVAILABLE

	LS	LT	PREMIER
EXTERIOR (CONTINUED)			
Mirrors – power remote control, heated	●	●	●
– with integrated turn signal indicators (requires available Midnight Edition on LT)	–	○	●
– auto-dimming driver-side (requires available Midnight Edition on LT)	–	○	●
– Black caps	●	–	–
– body-colour caps	–	●	–
– chrome caps	–	–	●
– Mosaic Black caps (requires available Redline Edition)	–	○	○
Mouldings – Black lower window trim	●	–	–
– bright lower window trim	–	●	●
– high-gloss Black lower window trim (requires available Midnight Edition)	–	○	–
Roof-mounted side rails; included with available 2.0L engine on LT, not included on LT when Redline Edition is ordered	–	○	●
Tires – P225/65R17 all-season ¹	●	●	–
– P225/60R18 all-season ¹ ; included with available 2.0L engine on LT (requires available 18" machined-face aluminum wheels with painted pockets [RV6] on LT with 1.5L engine)	–	○	●
– P235/50R19 all-season ¹ ; included with available Midnight Edition or Redline Edition on LT; included with available 2.0L engine on Premier (requires available Premier True North Edition with 1.5L engine on Premier)	–	○	○
– compact spare	●	●	●
Wheels – 17" painted-aluminum (RSB)	●	●	–
– 18" machined-face aluminum with painted pockets (RV6); included with available 2.0L engine on LT	–	○	●
– 19" Gloss Black-painted aluminum (PJ) (requires available Midnight Edition)	–	○	–
– 19" Black-painted aluminum wheels with Red accents (RZA) (requires available Redline Edition)	–	○	○
– 19" bright machined-face aluminum wheels with Sparkle Silver-painted pockets (PJT); included with available 2.0L engine (requires available Premier True North Edition with 1.5L engine)	–	–	○
Wipers – front, 2-speed with variable delay (intermittent)	●	●	●
– rear with variable delay (intermittent)	●	●	●
INTERIOR			
Active Noise Cancellation	●	●	●
Air conditioning – manual, single-zone	●	●	–
– automatic, dual-zone with individual climate settings for driver and front passenger (requires available Confidence & Convenience Package on LT)	–	○	●
– rear console air vents	●	●	●
Assist handles – driver, front passenger and rear outboard seating positions	●	●	●
Cargo area – rear seatback releases	–	●	●
– underfloor storage	●	●	●
Console – front floor with armrest, cupholders and LED lamp in storage bin	●	●	●
– overhead storage for sunglasses	–	●	●
Cruise control – electronic with set and resume speed	●	●	●
– Adaptive Cruise Control – Camera ¹ (requires available Confidence & Convenience II Package)	–	–	○
Defogger – electric rear-window	●	●	●
Door locks – power, programmable with lock-out protection	●	●	●
Floor mats – front and rear, carpeted	●	●	●

	LS	LT	PREMIER
INTERIOR (CONTINUED)			
Instrumentation – analogue gauges (includes speedometer, tachometer, coolant temperature and fuel gauges)	●	●	●
– Driver Information Centre (includes 3.5-in. diagonal monochromatic display with indicators for low fuel, Oil Life Monitoring System, digital speedometer, fuel consumption, fuel range, driving time, average speed, vehicle programmable features and message centre)	●	–	–
– Driver Information Centre (includes same as above with 4.2-in. diagonal multi-colour display)	–	●	●
– Rear Seat Reminder ² – notification	●	●	●
Keyless Open and Start – passive entry with Push-Button Start, extended-range Remote Keyless Entry System and panic feature	●	●	●
Lighting – dome, delayed entry/exit, theatre dimming, roof courtesy, LED front and rear reading lamps and cargo area	●	●	●
– ambient lighting on instrument panel	–	–	●
Mirror – rear-view, manual day/night	●	●	–
– rear-view, auto-dimming (requires available Midnight Edition on LT)	–	○	●
Power outlets – 12-volt auxiliary, two, in front of floor console and in cargo area	●	●	●
– 120-volt AC, on rear of centre console (requires available True North Edition or Redline Edition on LT)	–	○	●
Steering column – manual tilt and telescopic	●	●	●
Steering wheel – 3-spoke with mounted audio, cruise and phone controls	●	●	–
– leather-wrapped with mounted audio, cruise and phone controls (requires available Confidence & Convenience Package on LT)	–	○	●
– heated (requires available Confidence & Convenience II Package)	–	–	○
Sunroof – power, tilt/sliding glass panel with sunshade and express-open feature; includes roof-mounted side rails on LT (requires available LT True North Edition on LT; requires available Premier True North Edition on Premier)	–	○	○
Universal home remote – 3-channel programmable transmitter, includes garage door opener (requires available Confidence & Convenience Package on LT)	–	○	●
Vehicle starter system – remote	●	●	●
Visors – driver and front passenger, covered illuminated vanity mirrors	●	●	●
Windows – power, driver express-up/-down, passenger express-down and rear-window lock-out features	●	●	●
SEATING			
Seats – front bucket with adjustable head restraints and seatback map pockets	●	●	●
– with Premium Cloth seating surfaces	●	●	–
– with leather-appointed seating surfaces and perforated seat inserts (requires available Midnight Edition on LT)	–	○	●
Seat – manual 4-way driver-seat adjuster	●	–	–
– power 8-way driver-seat adjuster with power 2-way lumbar control (requires available LS Convenience Package on LS)	○	●	●
– manual 4-way front-passenger seat adjuster	●	●	●
– power 8-way front-passenger seat adjuster with power 2-way lumbar control (requires available Confidence & Convenience II Package)	–	–	○
Heated – driver and front-passenger seats	●	●	●
– rear outboard seating positions (requires available Confidence & Convenience II Package)	–	–	○
Memory – recalls two pre-sets for power driver seat and exterior mirrors	–	–	●


¹ Read the vehicle Owner's Manual for important feature limitations and information. ² Does not detect people or items. Always check rear seat before exiting. † All-season tires may not satisfy winter tire requirements in all regions of the country. Tires specifically designed for severe winter conditions and marked with the "winter tire" symbol  may be required during certain months or in certain regions. Contact your Provincial, Municipal or local road authority for information regarding which tires are required in your particular area.

SPECIFICATIONS (CONTINUED)

● STANDARD ○ AVAILABLE – NOT AVAILABLE

	LS	LT	PREMIER
SEATING (CONTINUED)			
Ventilated driver and front passenger seats (requires available Confidence & Convenience II Package)	–	–	○
Seatback – rear, 60/40 split-folding with rear centre armrest	●	●	●
INFOTAINMENT			
Chevrolet Infotainment 3 system ¹ with 7-in. diagonal colour touch-screen, AM/FM stereo, Bluetooth [®] audio streaming ² for two active devices, voice command pass-through to compatible phone, and Apple CarPlay ^{®3} and Android Auto ^{™4} compatibility	●	●	–
Chevrolet Infotainment 3 Plus system ¹ with 8-in. diagonal HD colour touch-screen, includes features listed above, voice recognition and in-vehicle apps ⁵	–	–	●
Chevrolet Infotainment 3 Plus system ¹ with Navigation ⁶ ; includes Plus system features listed above and Connected Navigation ⁷ ; included with available Redline Edition (requires available LT True North Edition)	–	○	–
Chevrolet Infotainment 3 Premium system ¹ with Navigation ⁶ ; includes Plus system features listed above, Connected Navigation ⁷ , HD Radio [®] , enhanced voice recognition and additional memory for in-vehicle apps ⁵ (requires available Premier True North Edition)	–	–	○
Audio – 6-speaker system	●	●	●
– 7-speaker Bose premium system (requires available Premier True North Edition)	–	–	○
Media – USB ports ⁸ one type-A and one type-C, and auxiliary input jack in front centre stack storage area	●	●	–
– USB ports ⁸ one type-A and one type-C, SD card reader, and auxiliary input jack in front centre stack storage area (requires available LT True North Edition on LT)	–	○	●
– USB ports ⁸ two type-A, in floor console storage bin (requires available LT True North Edition on LT)	–	○	●
– USB ports ⁸ two type-A, charge-only, on rear of centre console	●	●	●
Wireless charging ⁹	–	–	●
SiriusXM ^{®10} – All Access Package with 3-month trial subscription	–	●	●
Built-in 4G LTE Wi-Fi [®] Hotspot ¹¹ ; includes 1-month or 3 GB data plan trial (whichever comes first) from trial activation date	●	●	●
Chevrolet Connected Access ¹² includes 10 years of standard connectivity and enables features such as Vehicle Diagnostics ¹³ and Dealer Maintenance Notification ¹³	●	●	●
PACKAGES AND SPECIAL EDITIONS			
LS Convenience Package	○	–	–
Includes power 8-way driver-seat adjuster, power 2-way driver lumbar control and deep-tinted rear glass on all windows behind front doors			

	LS	LT	PREMIER
PACKAGES AND SPECIAL EDITIONS (CONTINUED)			
Confidence & Convenience Package	–	○	–
Includes Driver Confidence II Package (Rear Park Assist ¹⁴ , Rear Cross Traffic Alert ¹⁴ and Lane Change Alert with Side Blind Zone Alert ¹⁴) and Driver Convenience Package (fog lamps, dual-zone automatic climate control, leather-wrapped steering wheel, and programmable Universal Home Remote and power liftgate)			
Infotainment Package	–	○	–
Includes Chevrolet Infotainment 3 Plus system ¹ with Navigation ⁶ and Plus system features listed in Infotainment, HD Rear Vision Camera ¹⁴ , two USB ports ⁸ located in front console storage bin and 120-volt AC power outlet located on rear of centre console; included with available Redline Edition (requires available LT True North Edition)			
LT True North Edition	–	○	–
Includes power sunroof, and Infotainment Package and Confidence & Convenience Package listed above			
Midnight Edition	–	○	–
Includes front and rear Black Chevrolet bowtie emblems, Black grille and surround, Black fog lamp bezels and surround, Mosaic Black Metallic exterior colour, exterior heated power-adjustable mirrors with integrated turn signal indicators and driver-side auto-dimming feature, 19" gloss Black-painted aluminum wheels (PJI), P235/50R19 all-season ¹ tires, Jet Black leather-appointed seating surfaces with perforated seat inserts, auto-dimming interior rear-view mirror and memory settings (requires available Confidence & Convenience Package)			
Redline Edition	–	○	○
Includes front and rear Black Chevrolet bowtie emblems, Redline-specific Black grille, Mosaic Black exterior rear-view mirror caps, Black beltline mouldings, Black Equinox badges with Red outline, 19" Black-painted aluminum wheels with Red accents (RZA) and P235/50R19 all-season ¹ tires; includes Infotainment Package listed above on LT (available with Iridescent Pearl Tricoat, Silver Ice Metallic, Summit White or Mosaic Black Metallic exterior colours) (requires available 2.0L engine; requires available Confidence & Convenience Package on LT; not available with Confidence & Convenience II Package or Premier True North Edition on Premier)			
Confidence & Convenience II Package	–	–	○
Includes Driver Confidence III Package (Safety Alert Seat ¹⁴ , HD Surround Vision ¹⁴ and Adaptive Cruise Control – Camera ¹⁴) and Driver Convenience II Package (heated steering wheel, power 8-way front-passenger seat adjuster with power 2-way lumbar control, ventilated driver and front passenger seats, and heated rear outboard seats)			
Premier True North Edition	–	–	○
Includes power sunroof, all-weather floor liners, cargo liner, Chevrolet Infotainment 3 Premium system ¹ with Navigation ⁶ plus features listed in Infotainment, 7-speaker Bose premium audio system and Confidence & Convenience II Package listed above; includes 19" bright machined-face aluminum wheels with Sparkle Silver-painted pockets (PJT) and P235/50R19 all-season ¹ tires			

1 Chevrolet Infotainment System functionality varies by model. Full functionality requires compatible Bluetooth and smartphone, and USB connectivity for some devices. Data plan rates may apply. 2 Visit my.gm.ca/Chevrolet/en/learnAbout/bluetooth for more information. Full Bluetooth feature functionality varies by device, model and/or vehicle configuration, and software version. 3 Vehicle user interface is a product of Apple and its terms and privacy statements apply. Requires compatible iPhone and data plan rates apply. 4 Vehicle user interface is a product of Google and its terms and privacy statements apply. Requires the Android Auto app on Google Play and an Android compatible smartphone running Android 5.0 Lollipop or higher. Data plan rates apply. 5 Additional data plan rates may apply. Available on select GM vehicles with compatible hardware. Third-party trademarks are the property of their respective third-party owners and used under agreement. Visit onstar.ca for service limitations, availability and service plan details. Requires active connected vehicle services and data plan or connection to an external Wi-Fi Hotspot. Vehicle data plans provided by AT&T or its local service provider. Services are subject to user terms and limitations. Visit onstar.ca for more details. 6 Detailed map coverage is available for most major urban areas of the United States and for certain metropolitan areas of Canada (Vancouver, Calgary, Edmonton, Winnipeg, Windsor, London, Toronto, Ottawa, Montreal, Quebec City and Halifax). Coverage is significantly limited outside these areas. 7 Requires subscription to OnStar Guidance Plan, Premium Access Plan or Navigation Add-On. Connected Navigation and Real-time Points of Interest (POI) only available on properly equipped vehicles. Services are subject to user terms and limitations and vary by model and/or vehicle configuration. Visit onstar.ca for more details. 8 Not compatible with all devices. 9 The system wirelessly charges one compatible mobile device. Some devices require an adaptor or back cover. See myChevrolet.ca for more information. 10 Available in 10 Canadian provinces, 3 territories and the 48 contiguous United States. Subscription sold separately after trial period. If you decide to continue your service at the end of your trial subscription, the plan you choose will automatically renew and bill at then-current rates until you call 1-888-539-7474 to cancel. Other fees and taxes will apply. All fees and programming subject to change. See the Customer Agreement for complete terms at siriusxm.ca/terms. 11 Visit onstar.ca for vehicle availability, coverage maps, details and system limitations. Services and connectivity vary by model and/or vehicle configuration and conditions as well as geographical and technical restrictions. 4G LTE service available in select markets. Requires active connected vehicle services and a data plan to access the vehicle's built-in Wi-Fi Hotspot. Accessory Power must be active to use the Wi-Fi Hotspot. Data plans provided by AT&T or its local service provider. Credit card is required for purchase. 12 Limitations apply. Not transferable. Standard connectivity available to original purchaser for 10 years from the trial activation date for properly equipped vehicles. See onstar.ca for details and further plan limitations. Connected Access does not include emergency or security services. Availability of Connected Access and any of its services is dependent on compatible 4G LTE wireless networks and is also subject to change. 13 Capabilities vary by model and/or vehicle configuration and service plan. Visit onstar.ca for vehicle availability. Message and data rates may apply. Requires active service, email address on file and enrollment in Vehicle Diagnostics. Not all issues will deliver alerts. On-Demand Diagnostics requires a paid service plan. 14 Read the vehicle Owner's Manual for important feature limitations and information. † All-season tires may not satisfy winter tire requirements in all regions of the country. Tires specifically designed for severe winter conditions and marked with the "winter tire" symbol  may be required during certain months or in certain regions. Contact your Provincial, Municipal or local road authority for information regarding which tires are required in your particular area.

DIMENSIONS



EXTERIOR, mm (in.)		
Wheelbase	2725 (107.3)	
Length	4651 (183.1)	
Width	1844 (72.6)	
Height	1661 (65.4)	
Front Track	1580 (62.2)	
Rear Track	1580 (62.2)	
INTERIOR, mm (in.) front/rear		
Headroom	1016/978 (40.0/38.5) ¹	
Legroom	1039/1013 (40.9/39.9)	
Shoulder Room	1453/1410 (57.2/55.5)	
Hip Room	1377/1313 (54.2/51.7)	
CAPACITIES		
Max. Cargo Area, L (cu. ft.) ²		
- Rear Seats in Position	847 (29.9)	
- Rear Seats Folded	1810 (63.9)	
Fuel Tank, L (imp. gal.)		
- FWD models	56 (12.3)	
- AWD models	59 (13.0)	
CURB WEIGHT, kg (lb.)		
- LS FWD	1485 (3274)	
- LS AWD	1572 (3465)	
- LT FWD - 1.5L	1508 (3325)	
- LT AWD - 1.5L	1578 (3478)	
- LT AWD - 2.0L	1637 (3610)	
- Premier AWD - 1.5L	1593 (3512)	
- Premier AWD - 2.0L	1662 (3665)	
ESTIMATED FUEL CONSUMPTION RATINGS, L/100 km (mpg) ³		
	CITY	HIGHWAY
1.5L I-4 FWD	8.9 (32)	7.7 (37)
1.5L I-4 AWD	9.3 (30)	8.0 (35)
2.0L I-4 AWD	10.9 (26)	8.3 (34)

¹ With available power sunroof 970/937 mm (38.2/36.9 in.). ² Cargo and load capacity limited by weight and distribution. ³ Fuel consumption estimates based on GM testing in accordance with Government of Canada approved test methods. Refer to vehicles.nrcan.gc.ca for details. Your actual fuel consumption will vary.



Experience Chevrolet Complete Care, a comprehensive package of owner benefits that are included with every new 2020 Chevrolet Equinox leased or purchased in Canada.

Chevrolet Complete Care coverage includes:

- 2-year/24,000 km¹ 2 Complimentary Lube-Oil-Filter Program²
- 3-year/60,000 km¹ Base Warranty Coverage³
- 5-year/100,000 km¹ Powertrain Component Warranty Coverage³
- 5-year/100,000 km¹ Courtesy Transportation⁴
- 5-year/100,000 km¹ 24/7 Roadside Assistance⁴
- 6-year/160,000 km¹ Sheet Metal rust-through perforation coverage³
- 1-month trial of Chevrolet Connected Services and 1 month of OnStar Safety & Security coverage⁵
- Chevrolet Connected Access⁶ includes 10 years of standard connectivity and enables services such as Vehicle Diagnostics⁷ and Dealer Maintenance Notification⁷

Other ownership privileges and programs⁸:

- Chevrolet Protection Plan – the only extended service plan backed by the resources and commitment of General Motors. The Chevrolet Protection Plan may be purchased at the time of vehicle sale or subsequently during the Base Warranty Coverage period⁹
- Chevrolet Owner Centre – Everything you need to know. Anything you need to do. Your Chevrolet Owner Centre makes it easy. Create your account today to get the most out of your new vehicle. Get special alerts and offers, schedule service, review your maintenance schedule, and view how-to videos specifically for your vehicle. All online, anytime. Visit the Owner Centre today to register or take a tour. Find out more at mychevrolet.ca.
- Discount Programs – save on your next vehicle. Students or recent graduates,⁸ people with disabilities⁸ and military personnel,⁸ you may be eligible¹⁰ for a discount on select new Chevrolet vehicles leased or purchased. Combine your discount with great retail offers for an exceptional value. For full details on all programs offered in Canada, visit programs.gm.ca.
- GM Card[®] – Cardholders may redeem Earnings towards the total purchase price or lease down payment of an eligible new Chevrolet car, truck or crossover. Restrictions and limitations apply. For full program details, visit gmcards.ca.

Chevrolet ownership experience. Chevrolet is committed to enhancing the vehicle shopping and ownership experience through a wide array of programs. Visit chevrolet.ca to build and price, find a vehicle, request a quote, compare vehicles, find financial tools or track your vehicle order. You'll also find information about 24-hour Roadside Assistance, Courtesy Transportation, Customer Assistance, GM Mobility, safety and current incentives.

Important words about this brochure. Some of the equipment shown or described throughout this brochure may be available at extra cost. We have tried to make this brochure comprehensive and factual. We reserve the right, however, to make changes at any time, without notice, in prices, colours, materials, equipment, specifications, models and availability. Specifications, dimensions, measurements, ratings and other numbers in this brochure and other printed materials provided at

the dealership or affixed to vehicles are approximates based on design and engineering drawings, prototypes and laboratory tests. Your vehicle may differ due to variations in manufacture and equipment. Since some information may have been updated since the time of printing, please check with your Chevrolet dealer for complete details. General Motors of Canada Company reserves the right to lengthen or shorten the model year for any product, for any reason, or to start and end model years at different times. Certain vehicle features may lose their usefulness over time due to obsolescence from technological changes. Unless otherwise noted, all claims based on the GM Compact Crossover segment and the latest available competitive information. Excludes other GM vehicles.

Engines. Chevrolet products are equipped with engines produced by GM Global Propulsion Systems or other suppliers to GM worldwide. The engines in Chevrolet products may also be used in other GM makes and models.

Assembly. Chevrolet vehicles and their components are assembled or produced by different operating units of General Motors, its subsidiaries or suppliers to GM worldwide. We sometimes find it necessary to produce Chevrolet vehicles with different or differently sourced components than originally scheduled. Since some options may be unavailable when your vehicle is assembled, we suggest you verify that your vehicle includes the equipment you ordered and that, if there were changes, they are acceptable to you.

Fleet orders. Some standard content and owner benefits may be modified or deleted on fleet orders. See dealer for details.

An important note about alterations and warranties. Installations or alterations to the original equipment vehicle (or chassis) as distributed by General Motors are not covered by the New Vehicle Limited Warranty. The special body company, assembler, equipment installer or upfitter is solely responsible for warranties on the body or equipment and any alterations (or any effect of the alterations) to any of the parts, components, systems or assemblies installed by GM. General Motors is not responsible for the safety or quality of design features, materials or workmanship of any alterations by such suppliers.

Trademarks. The marks appearing in this brochure including, but not limited to, General Motors, GM, Chevrolet, the Chevrolet emblem, Equinox and their respective logos, emblems, slogans and vehicle model names and body designs; and other marks such as Duralife, Find New Roads, IntelliBeam, myChevrolet, OnStar, the OnStar emblem and StabiliTrak are trademarks of General Motors LLC, OnStar LLC and/or General Motors of Canada Company, its subsidiaries, affiliates or licensors. Apple, Apple CarPlay and iPhone are trademarks of Apple Inc., registered in the U.S. and other countries. Bluetooth is a registered trademark of Bluetooth SIG, Inc. Bose is a registered trademark of the Bose Corporation. Facebook is a registered trademark of Facebook, Inc. © 2019 Sirius XM Canada Inc. "SiriusXM", the SiriusXM logo, channel names and logos are registered trademarks of Sirius XM Radio Inc. and are used under license. All rights reserved. Twitter is a trademark of Twitter, Inc. YouTube is a registered trademark and Android and Android Auto are trademarks of Google LLC. Wi-Fi is a registered trademark of Wi-Fi Alliance.

©Copyright 2019 General Motors of Canada Company. All rights reserved. All text, images, graphics, and other materials in this brochure are subject to the copyright and other intellectual property rights of General Motors LLC and/or General Motors of Canada Company. These materials may not be reproduced, distributed or modified without the express written permission of General Motors LLC and/or General Motors of Canada Company. September 2019.



¹ Whichever comes first. ² Limit of two (2) Lube-Oil-Filter services during the program period. Fluid top-offs, inspections, tire rotations, wheel alignments and balancing, etc., are not covered. Additional conditions and limitations apply. See participating dealer for details. ³ Conditions and limitations apply. See Warranty Booklet for details. ⁴ Conditions and limitations apply. See Owner's Manual for details. ⁵ Properly equipped Chevrolet vehicles are eligible for 1 month of Connected Services trial and OnStar Safety & Security Plan coverage, starting at trial activation date; includes emergency and navigation services, Connected Navigation, the Remote Access Plan, plus a 3 GB or 1-month (whichever comes first) data plan trial. Services subject to user terms and limitations; capabilities vary by model and/or vehicle configuration; visit onstar.ca for details. Data plans offered by AT&T or its local service provider. Availability subject to change. GM Canada may modify, extend or terminate offers for any reason, in whole or in part, at any time, without notice. Requires vehicle electrical system (including battery), wireless service and GPS satellite signal to be available and operating for features to function properly. ⁶ Limitations apply. Not transferable. Standard connectivity available to original purchaser for 10 years from the trial activation date for properly equipped vehicles. Visit onstar.ca for details and further plan limitations. Connected Access does not include emergency or security services. Availability of Connected Access and any of its services is dependent on compatible 4G LTE wireless networks and is also subject to change. ⁷ Capabilities vary by model and/or vehicle configuration and service plan. Visit onstar.ca for vehicle availability. Message and data rates may apply. Requires active service, email address on file and enrollment in Vehicle Diagnostics. Not all issues will deliver alerts. On-Demand Diagnostics requires a paid service plan. ⁸ Conditions and limitations apply. ⁹ Please work with your dealer to select the plan that is suitable for your driving needs. Dealers are free to set their own prices. ¹⁰ Subject to eligibility.

FIND NEW ROADS™

CHEVROLET.CA

