

TRAX 2020

CHEVROLET 



CIVILIZE THE CITY.

Urban living is great except for traffic and parking. That's where the 2020 Chevrolet Trax shines. This practical SUV is built to help get you in and out of tight parking spots while taking you and four friends for a day or night on the town. With its available safety features and surprising cargo flexibility, Trax is ready to take on the demands of the city – and your life.

FIND NEW ROADS™

Trax Premier in Nightfall Grey
Metallic (extra-cost colour).

MODELS

LS

Step into an SUV that's just right for the city.

Trax is made for today's tight parking spaces and ever-present traffic, with a higher driving position than a car and plenty of comfort and utility inside.

Every Trax is well equipped, with Remote Keyless Entry, air conditioning, power windows and door locks, the Chevrolet Infotainment 3 system¹ and a Rear Vision Camera².

LT

Take a step up in style with many convenient and useful features for your driving needs.

Halogen projector-style headlamps light up the road in front of you, and heated power-adjustable outside body-colour mirrors stay clear in icy weather.

You can opt for the available True North Edition as well as the available Redline Edition to give your Trax a distinctive, sporty look.

Top: Trax LS in Nightfall Grey Metallic (extra-cost colour).

Bottom: Trax LT in Silver Ice Metallic.



¹ Chevrolet Infotainment System functionality varies by model. Full functionality requires compatible Bluetooth and smartphone, and USB connectivity for some devices. Data plan rates may apply. ² Read the vehicle Owner's Manual for important feature limitations and information.

MODELS

PREMIER

Meet the Trax that's always dressed for the occasion.

Grab onto a 3-spoke leather-wrapped steering wheel with mounted cruise, audio and phone controls. Leatherette seats are standard.

You'll also receive a complement of active safety technology, including Forward Collision Alert¹, Lane Departure Warning¹, Side Blind Zone Alert¹, Rear Cross Traffic Alert¹ and Rear Park Assist¹. In addition, all-wheel drive (AWD) can assist when the road conditions are not ideal.

Aluminum 18-in. wheels add a strong presence and a power sunroof provides the finishing touch.

Trax Premier in Pacific Blue Metallic (extra-cost colour).



¹ Read the vehicle Owner's Manual for important feature limitations and information.

Trax Premier interior in Jet Black with available features.

INTERIOR DESIGN

TAILORED EXACTLY FOR YOU.

A dual cockpit design creates attractive symmetry. And many of the tactile surfaces are made of supple materials that provide a soft, rich feel.

The Trax interior provides attention to detail that you'll appreciate. Contrasting stitching accents the seats. Premier models include heated driver and front passenger seats.





INTERIOR FEATURES

TAKE IT ALL WITH YOU.

Flexibility is what makes Trax so easy to love. You can seat five people, and there are eight different ways to carry passengers and cargo wherever you're going.

With a **60/40 split-folding rear seat** and a fold-flat front passenger seat, you can carry items up to 2 m (8 ft.) long. Plus, there's up to **1371 L (48.4 cu. ft.)¹ of maximum cargo space** with the rear seats folded down.

A **Driver Information Centre** lets you view information such as fuel range, oil life, tire pressure² and more.

¹ Cargo and load capacity limited by weight and distribution. ² Does not monitor spare tire.

myChevrolet® App¹ available to download, includes remote vehicle start capability² if properly equipped.

Two convenient USB ports³ and an auxiliary input jack.

Android Auto™⁴ compatibility.

Keyless Open and Start. Standard on Premier and available on LT.



¹ Available on select Apple and Android devices. Service availability, features and functionality are subject to limitations and vary by model and/or vehicle configuration, device and the plan in which you are enrolled. Device data connection required. Visit onstar.ca for more details. ² Requires subscription to Remote Access Plan or Premium Access Plan. Services are subject to user terms and limitations and vary by model and/or vehicle configuration. Remote start requires GM factory-installed and enabled remote start system. Visit onstar.ca for more details. ³ Not compatible with all devices. ⁴ Vehicle user interface is a product of Google and its terms and privacy statements apply. Requires the Android Auto app on Google Play and an Android compatible smartphone running Android 5.0 Lollipop or higher. Data plan rates apply.



TECHNOLOGY

CONNECT TO WHAT MATTERS.

- The Chevrolet Infotainment 3 system¹ is intuitive and easy to use with the 7-in. diagonal colour touch-screen display.
- Built-in 4G LTE Wi-Fi[®] Hotspot² (data plan required) provides a fast Internet connection for up to seven devices.
- Apple CarPlay[®] compatibility³

¹ Chevrolet Infotainment System functionality varies by model. Full functionality requires compatible Bluetooth and smartphone, and USB connectivity for some devices. Data plan rates may apply. ² Visit onstar.ca for vehicle availability, coverage maps, details and system limitations. Services and connectivity may vary by model and/or vehicle configuration and conditions as well as geographical and technical restrictions. 4G LTE service available in select markets. Requires active connected vehicle services and a data plan to access the vehicle's built-in Wi-Fi Hotspot. Accessory Power must be active to use the Wi-Fi Hotspot. Data plans provided by AT&T or its local service provider. Credit card is required for purchase. ³ Vehicle user interface is a product of Apple and its terms and privacy statements apply. Requires compatible iPhone and data plan rates apply.

SAFETY AND DRIVER ASSISTANCE

READY AND VIGILANT.



Forward Collision Alert. This feature monitors how close your vehicle is to the detected vehicle in front of you and can alert you to a potential crash. Standard on Premier.



Lane Departure Warning. This camera-based system reads traffic lane markings when identifiable and provides alerts if you unintentionally drift out of your lane without using a turn signal. Standard on Premier.



Side Blind Zone Alert. This feature can provide side mirror alerts when a moving vehicle is detected in a side blind zone. Standard on Premier. Available on LT.



Rear Cross Traffic Alert. This feature can alert you to detected vehicles crossing behind your Trax when backing up. Standard on Premier. Available on LT.



Rear Vision Camera. When travelling in Reverse at low speeds, this feature helps provide a view of the area immediately behind your Trax. Standard on all models.



Rear Park Assist. When travelling in Reverse at low speeds, this feature can provide distance alerts when it detects certain stationary objects in close proximity behind the vehicle. Standard on Premier. Available on LT.



10 standard airbags! Every Trax includes frontal and knee airbags for driver and front passenger and head-curtain and seat-mounted side-impact airbags for all outboard seating positions.

OnStar Automatic Crash Response. In a crash, built-in sensors are designed to send a signal that can automatically connect you to a specially trained, Emergency Medical Dispatch-certified Advisor² who can help you get the assistance you need – even if you can't ask for it. Advisors can use GPS technology to pinpoint your vehicle's approximate location and contact first responders to get you help. OnStar Automatic Crash Response is included in the available paid OnStar Safety & Security Plan³

Safety starts with you. Safety or driver assistance features are no substitute for the driver's responsibility to operate the vehicle in a safe manner. The driver should remain attentive to traffic, surroundings and road conditions at all times. Visibility, weather and road conditions may affect feature performance. Read the vehicle Owner's Manual for more important feature limitations and information.

¹ A NOTE ON CHILD SAFETY: Always use seat belts and the correct child restraint for your child's age and size, even with airbags. Even in vehicles equipped with the Passenger Sensing System, children are safer when properly secured in a rear seat in the appropriate infant, child or booster seat. Never place a rear-facing infant restraint in the front seat of any vehicle equipped with an active frontal airbag. See your vehicle Owner's Manual and the child safety seat instructions for more safety information. ² OnStar Advisors are certified by the International Academies of Emergency Dispatch. ³ Requires vehicle electrical system (including battery), wireless service and GPS satellite signal to be available and operating for features to function properly. Services are subject to user terms and limitations, and may vary by model and/or vehicle configuration. Not all vehicles may transmit all crash data. OnStar acts as a link to existing emergency service providers. Visit onstar.ca for more details.



Trax Premier in Silver Ice Metallic.

PERFORMANCE

DRIVE LIKE YOU BELONG HERE.

- 138-horsepower ECOTEC® 1.4L turbocharged 4-cylinder engine with 148 lb.-ft. of torque.
- Electronically controlled 6-speed automatic transmission with overdrive and Driver Shift Control.
- Standard front-wheel drive (FWD) or available all-wheel drive (AWD) that engages automatically when accelerating from a standing start and shifts back to FWD when no longer needed.



SPECIAL FEATURES



Trax Redline Edition, shown in Silver Ice Metallic. Available on LT.



Front and Rear Black Bowties available from Chevrolet Accessories!



Trax LT, shown in Summit White with available 18-in. Midnight Silver-painted aluminum wheels and other available features.



All-Weather Floor Liners available from Chevrolet Accessories!

EXTERIOR COLOURS



G7Q – Nightfall Grey Metallic¹



G9K – Satin Steel Metallic¹



GAN – Silver Ice Metallic



GAZ – Summit White



GB0 – Mosaic Black Metallic¹



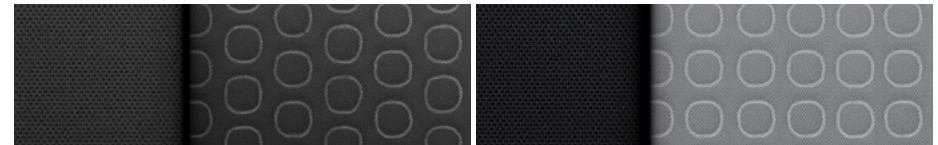
GPJ – Cajun Red Tintcoat^{1,2}



GUM – Pacific Blue Metallic^{1,2}

¹ Available at extra cost. ² Not available on LS.

MODELS



Jet Black Cloth

Light Ash Grey Cloth (shown)



16" painted-aluminum wheels (RRZ)
Standard on LS

LS Trax LS includes these features:

MECHANICAL

Brakes – 4-wheel Anti-lock Braking System (ABS), Panic Brake Assist and Hill Start Assist

Engine – ECOTEC 1.4L turbocharged DOHC I-4 with Variable Valve Timing (VVT) and oil pan heater

StabiliTrak® – Electronic Stability Control System with Traction Control

Transmission – 6-speed automatic with overdrive and Driver Shift Control

EXTERIOR

Daytime running lamps – reduced intensity low beam

Door handles – body-colour

Glass – solar-absorbing tinted; acoustic-laminated windshield

Headlamps – halogen reflector, automatic on/off with automatic delay

Mirrors – power remote control, body-colour caps with Black base

Mouldings – Black beltline

Tire – compact spare

Tires – P205/70R16 all-season¹

Wipers – front variable-speed, intermittent with washers; rear intermittent with washer

INTERIOR

Air conditioning – manual, single-zone with particle air filter

Audio – 6-speaker system

Compass – digital, in Driver Information Centre

Door locks – power, programmable with lock-out protection and manual rear door child security

Driver Information Centre – 3.5-in. diagonal monochromatic display

Entertainment – Chevrolet Infotainment 3 system¹ with 7-in. diagonal colour touch-screen, AM/FM stereo, Bluetooth[®] audio streaming² for two active devices, voice command pass-through to compatible phone, and Apple CarPlay^{®3} and Android Auto^{™4} compatibility

Lighting – front-seat reading lamps, overhead courtesy lamp and rear cargo area lamp

INTERIOR (CONTINUED)

Media – two USB ports⁵ and auxiliary input jack

Rear Vision Camera⁶

Remote Keyless Entry – with panic alarm

Seat – driver 4-way manual adjuster with inside armrest and power 2-way lumbar adjuster

Seat – fold-flat front passenger seatback

Seats – rear, 60/40 split-folding bench

Steering column – manual tilt and telescopic


Steering wheel – mounted audio and phone controls

Theft-deterrent system – unauthorized entry

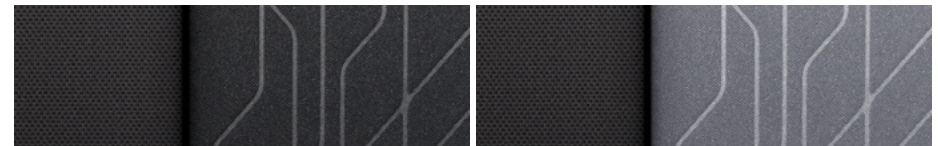
Tire Pressure Monitoring System (does not monitor spare tire)

Visors – driver and front passenger, covered vanity mirrors

Windows – power with driver express-up/-down, all others express-down; rear window lock-out feature

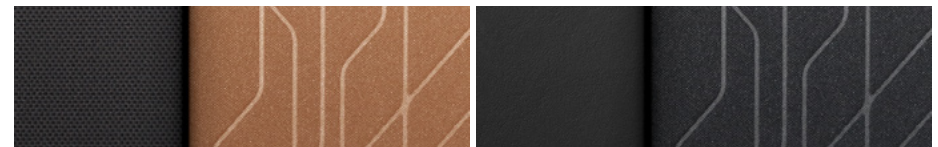
¹ Chevrolet Infotainment System functionality varies by model. Full functionality requires compatible Bluetooth and smartphone, and USB connectivity for some devices. Data plan rates may apply. ² Visit my.gm.ca/Chevrolet/en/learnAbout/bluetooth for more information. Full Bluetooth feature functionality varies by device, model and/or vehicle configuration, and software version. ³ Vehicle user interface is a product of Apple and its terms and privacy statements apply. Requires compatible iPhone and data plan rates apply. ⁴ Vehicle user interface is a product of Google and its terms and privacy statements apply. Requires the Android Auto app on Google Play and an Android compatible smartphone running Android 5.0 Lollipop or higher. Data plan rates apply. ⁵ Not compatible with all devices. ⁶ Read the vehicle Owner's Manual for important feature limitations and information. † All-season tires may not satisfy winter tire requirements in all regions of the country. Tires specifically designed for severe winter conditions and marked with the "winter tire" symbol  may be required during certain months or in certain regions. Contact your Provincial, Municipal or local road authority for information regarding which tires are required in your particular area.

MODELS (CONTINUED)



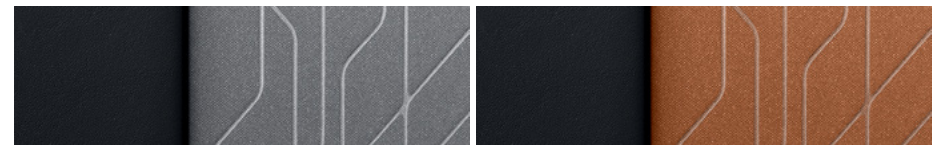
Jet Black Deluxe Cloth

Light Ash Grey Deluxe Cloth



Brandy Deluxe Cloth²

Jet Black Deluxe Cloth/Leatherette Seating Surfaces³



Light Ash Grey Deluxe Cloth/Leatherette Seating Surfaces³

Brandy Deluxe Cloth/Leatherette Seating Surfaces (shown)^{2,3}



16" painted-aluminum wheels (RRZ)
Standard on LT



18" Black-finish aluminum
wheels with Red accents (REN)
Included on LT with
Redline Edition



18" Midnight Silver-painted
aluminum wheels (RRT)
Available on LT⁴

LT In addition to or replacing LS features, LT includes:

EXTERIOR

Daytime running lamps – LED

Fascias – front and rear Silver-painted accents

Glass – deep-tinted on all windows behind front doors

Headlamps – projector-style halogen, automatic on/off with automatic delay

Mirrors – power remote control, heated with body-colour caps and base

Mouldings – bright lower window trim

Roof-mounted side rails

Tail lamps – LED

INTERIOR

Cargo area – security cover, rigid, removable

Cruise control – electronic with set and resume speed

Power outlet – 110-volt AC on rear of centre console

SiriusXM^{®1} – All Access Package with 3-month trial subscription

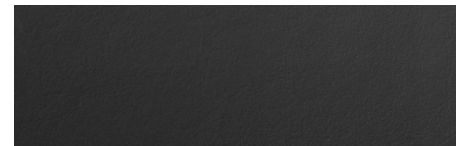
Steering wheel – mounted audio, cruise and phone controls

Storage – under-seat drawer, front passenger

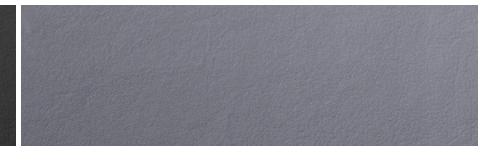
Vehicle starter system – remote

¹ Available in 10 Canadian provinces, 3 territories and the 48 contiguous United States. Subscription sold separately after trial period. If you decide to continue your service at the end of your trial subscription, the plan you choose will automatically renew and bill at then-current rates until you call 1-888-539-7474 to cancel. Other fees and taxes will apply. All fees and programming subject to change. See the Customer Agreement for complete terms at siriusxm.ca/terms. ² Not available with Silver Ice Metallic exterior colour. ³ Requires available LT Convenience Package or True North Edition. ⁴ Requires available LT Convenience Package.

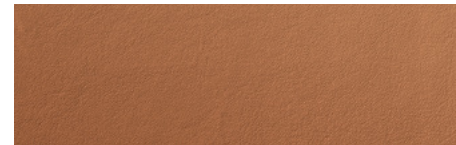
MODELS (CONTINUED)



Jet Black Leatherette Seating Surfaces (shown)



Light Ash Grey Leatherette Seating Surfaces



Brandy Leatherette Seating Surfaces²



18" aluminum wheels (RRS)
Standard on Premier

PREMIER In addition to or replacing LT features, Premier includes:

MECHANICAL

All-wheel drive

EXTERIOR

Fog lamps

Liftgate handle – chrome accent appliqué

Tires – P215/55R18 all-season[†]

INTERIOR

Audio – 7-speaker Bose premium system, including Richbass subwoofer

Doorsill plates – front, bright

Forward Collision Alert¹

Keyless Open and Start

Lane Departure Warning¹

Mirror – rear-view, auto-dimming

Rear Cross Traffic Alert¹

Rear Park Assist¹

Seat – power 6-way driver adjuster with power 2-way lumbar control


Seats – heated, driver and front passenger

Side Blind Zone Alert¹

Steering wheel – leather-wrapped

Sunroof – power with sunshade and express-open feature

Visors – driver and front passenger, covered illuminated vanity mirrors


¹ Read the vehicle Owner's Manual for important feature limitations and information. ² Not available with Silver Ice Metallic exterior colour. [†] All-season tires may not satisfy winter tire requirements in all regions of the country. Tires specifically designed for severe winter conditions and marked with the "winter tire" symbol  may be required during certain months or in certain regions. Contact your Provincial, Municipal or local road authority for information regarding which tires are required in your particular area.

SPECIFICATIONS

● STANDARD ○ AVAILABLE – NOT AVAILABLE

	LS	LT	PREMIER
SAFETY & SECURITY			
Airbags ¹ – frontal and knee airbags for driver and front passenger; seat-mounted side-impact and head-curtain airbags for all outboard seating positions; includes front Passenger Sensing System for frontal passenger airbag	●	●	●
Door locks – rear doors, child security	●	●	●
Forward Collision Alert ²	–	–	●
Lane Departure Warning ²	–	–	●
OnStar Safety & Security Plan coverage ³ for 1 month from the trial activation date, which includes Automatic Crash Response, Stolen Vehicle Assistance, Roadside Assistance and Turn-by-Turn Navigation	●	●	●
Rear Cross Traffic Alert ² (requires available True North Edition on LT)	–	○	●
Rear Park Assist ² (requires available True North Edition on LT)	–	○	●
Rear Vision Camera ²	●	●	●
Safety restraints – 3-point belts for all seating positions and front seat belt pre-tensioners	●	●	●
– LATCH system (Lower Anchors and Tethers for Children), for child restraint systems	●	●	●
Side Blind Zone Alert ² (requires available True North Edition on LT)	–	○	●
StabiliTrak – Electronic Stability Control System	●	●	●
Theft-deterrent system – engine immobilizer	●	●	●
– unauthorized entry	●	●	●
Tire Pressure Monitoring System (does not monitor spare tire)	●	●	●
Traction Control – electronic, full-function, all-speed	●	●	●
MECHANICAL			
Battery – maintenance-free with run-down protection	●	●	●
Brakes – 4-wheel Anti-lock Braking System (ABS)	●	●	●
– Panic Brake Assist and Hill Start Assist	●	●	●
– power, front disc/rear drum (FWD models)	●	●	–
– power, 4-wheel disc (AWD models)	○	○	●
Drive – front-wheel (FWD)	●	●	–
– all-wheel (AWD)	○	○	●
Engine – ECOTEC 1.4L turbocharged DOHC I-4 with Variable Valve Timing (VVT); 138 hp @ 4900 rpm, 148 lb.-ft. of torque @ 1850 rpm	●	●	●
Engine oil pan heater	●	●	●
Steering – power, electric, rack-and-pinion	●	●	●
Suspension – front MacPherson strut/rear compound crank	●	●	●
Transmission – 6-speed automatic with overdrive and Driver Shift Control	●	●	●

	LS	LT	PREMIER
EXTERIOR			
Door handles – body-colour	●	●	●
Fascias – front and rear, Silver-painted accents	–	●	●
Glass – solar-absorbing	●	●	●
– acoustic-laminated windshield	●	●	●
– deep-tinted behind front doors	–	●	●
Liftgate handle – body-colour	●	●	–
– chrome accent appliqué	–	–	●
Lighting – daytime running lamps, reduced intensity low beam	●	–	–
– daytime running lamps, LED	–	●	●
– automatic on/off with automatic delay	●	●	●
– halogen headlamps, reflector	●	–	–
– halogen headlamps, projector-style	–	●	●
– fog lamps	–	–	●
– LED tail lamps	–	●	●
Mirrors – power remote control, body-colour caps with Black base	●	–	–
– power remote control, heated with body-colour caps	–	●	●
Mouldings – Black beltline	●	–	–
– chrome beltline	–	●	●
Roof-mounted side rails	–	●	●
Tires – P205/70R16 all-season [†]	●	●	–
– P215/55R18 all-season [†] (requires available Redline Edition or 18" Midnight Silver-painted aluminum wheels on LT)	–	○	●
– compact spare	●	●	●
Wheels – 16" x 6.5" aluminum (RRZ)	●	●	–
– 18" x 7" Black-finish aluminum with Red accents (REN) (requires available Redline Edition)	–	○	–
– 18" x 7" Midnight Silver-painted aluminum (RRT); includes P215/55R18 all-season [†] tires (requires available LT Convenience Package)	–	○	–
– 18" x 7" aluminum (RRS)	–	–	●
Wipers – front, 2-speed with variable delay (intermittent)	●	●	●
– rear with variable delay (intermittent)	●	●	●
INTERIOR			
Air conditioning – manual, single-zone with particle filter	●	●	●
– rear floor heating ducts	●	●	●
Assist handles – driver, front passenger and rear outboard, includes coat hooks on rear handles	●	●	●
Cargo area – 4 cargo tie-downs	●	●	●
– security cargo cover, rigid and removable	–	●	●
– storage tray under cargo floor	●	●	●

1 A NOTE ON CHILD SAFETY: Always use seat belts and the correct child restraint for your child's age and size, even with airbags. Even in vehicles equipped with the Passenger Sensing System, children are safer when properly secured in a rear seat in the appropriate infant, child or booster seat. Never place a rear-facing infant restraint in the front seat of any vehicle equipped with an active frontal airbag. See your vehicle Owner's Manual and the child safety seat instructions for more safety information. **2** Read the vehicle Owner's Manual for important feature limitations and information. **3** Properly equipped Chevrolet vehicles are eligible for 1 month of Connected Services trial and OnStar Safety & Security coverage starting at trial activation date; includes emergency and navigation services, the Remote Access Plan, plus a 3 GB or 1-month (whichever comes first) data plan trial. Services subject to user terms and limitations; capabilities vary by model and/or vehicle configuration; visit onstar.ca for details. Data plans offered by AT&T or its local service provider. Availability subject to change. GM Canada may modify, extend or terminate offers for any reason, in whole or in part, at any time, without notice. Requires vehicle electrical system (including battery), wireless service and GPS satellite signal to be available and operating for features to function properly. [†] All-season tires may not satisfy winter tire requirements in all regions of the country. Tires specifically designed for severe winter conditions and marked with the "winter tire" symbol  may be required during certain months or in certain regions. Contact your Provincial, Municipal or local road authority for information regarding which tires are required in your particular area.

SPECIFICATIONS (CONTINUED)

● STANDARD ○ AVAILABLE – NOT AVAILABLE

	LS	LT	PREMIER
INTERIOR (CONTINUED)			
Cruise control – electronic with set and resume speed	–	●	●
Defogger – electric rear-window	●	●	●
Door locks – power, programmable with lock-out protection	●	●	●
Doorsill plates – front, bright	–	–	●
Floor mats – front and rear, carpeted	●	●	●
Instrumentation – analogue gauges (includes speedometer, tachometer and fuel gauges)	●	●	●
– Driver Information Centre (includes 3.5-in. diagonal monochromatic display with True White backlighting and indicators for low fuel, Oil Life Monitoring System, average fuel consumption, fuel range, driving time, average speed and message centre)	●	●	●
– Exterior temperature and compass display	●	●	●
Lighting – dome, delayed entry/exit, theatre dimming, front reading lamps and cargo area	●	●	●
Keyless Entry – Remote Keyless Entry, programmable with panic alarm, extended-range	●	●	–
– Keyless Open and Start – passive entry with Push-Button Start, extended-range Remote Keyless Entry System and panic alarm (requires available LT Convenience Package or True North Edition on LT)	–	○	●
Keys – foldable	●	●	–
– two spare keys (requires available LT Convenience Package or True North Edition on LT)	–	○	●
Mirror – rear-view, manual day/night	●	●	–
– rear-view, auto-dimming	–	–	●
Power outlets – 12-volt auxiliary, front	●	●	●
– 110-volt AC, on rear of floor console	–	●	●
Retained accessory power	●	●	●
Shifter knob – Satin Silver and chrome finish	●	●	●
Steering column – manual tilt and telescopic	●	●	●
Steering wheel – 3-spoke with audio and phone controls	●	–	–
– 3-spoke with audio, cruise and phone controls	–	●	●
– 3-spoke leather-wrapped with audio, cruise and phone controls (requires available LT Convenience Package or True North Edition on LT)	–	○	●
Sunroof – power with sunshade and express-open feature (requires available True North Edition on LT)	–	○	●
Vehicle starter system – remote	○	●	●
Visors – driver and front passenger, covered vanity mirrors	●	●	–
– driver and front passenger, covered illuminated vanity mirrors	–	–	●
Windows – power, driver express-up/-down, all others express-down; rear window lock-out feature	●	●	●

	LS	LT	PREMIER
SEATING			
Reclining front bucket seats – with adjustable head restraints	●	●	●
– with cloth seating surfaces	●	–	–
– with Deluxe Cloth seating surfaces	–	●	–
– with Deluxe Cloth/Leatherette seating surfaces (requires available LT Convenience Package or True North Edition)	–	○	–
– with leatherette seating surfaces	–	–	●
Seat – manual 4-way driver-seat adjuster with inside armrest and power 2-way lumbar adjuster	●	●	–
– power 6-way driver-seat adjuster with inside armrest and power 2-way lumbar adjuster (requires available LT Convenience Package or True North Edition on LT)	–	○	●
Seatback – flat-folding, front passenger	●	●	●
– rear, 60/40 split-folding	●	●	●
Seats – heated, driver and front passenger	–	–	●
INFOTAINMENT			
Chevrolet Infotainment 3 system ¹ with 7-in. diagonal colour touch-screen, AM/FM stereo, Bluetooth® audio streaming ² for two active devices, voice command pass-through to compatible phone, and Apple CarPlay ^{®3} and Android Auto™ ⁴ compatibility	●	●	●
Audio – 6-speaker system	●	●	–
7-speaker Bose premium audio system with Richbass subwoofer (requires available True North Edition on LT)	–	○	●
Media – two USB ports ⁵ and auxiliary input jack	●	●	●
SiriusXM ^{®6} – All Access Package with 3-month trial subscription	–	●	●
Built-in 4G LTE Wi-Fi [®] Hotspot ⁷ ; includes 1-month or 3 GB data plan trial (whichever comes first) from trial activation date	●	●	●
Chevrolet Connected Access ⁸ includes 10 years of standard connectivity and enables features such as Vehicle Diagnostics ⁹ and Dealer Maintenance Notification ⁹	●	●	●

¹ Chevrolet Infotainment System functionality varies by model. Full functionality requires compatible Bluetooth and smartphone, and USB connectivity for some devices. Data plan rates may apply. ² Visit my.gm.ca/Chevrolet/en/learnAbout/bluetooth for more information. Full Bluetooth feature functionality varies by device, model and/or vehicle configuration, and software version. ³ Vehicle user interface is a product of Apple and its terms and privacy statements apply. Requires compatible iPhone and data plan rates apply. ⁴ Vehicle user interface is a product of Google and its terms and privacy statements apply. Requires the Android Auto app on Google Play and an Android compatible smartphone running Android 5.0 Lollipop or higher. Data plan rates apply. ⁵ Not compatible with all devices. ⁶ Available in 10 Canadian provinces, 3 territories and the 48 contiguous United States. Subscription sold separately after trial period. If you decide to continue your service at the end of your trial subscription, the plan you choose will automatically renew and bill at then-current rates until you call 1-888-539-7474 to cancel. Other fees and taxes will apply. All fees and programming subject to change. See the Customer Agreement for complete terms at siriusxm.ca/terms. ⁷ Visit onstar.ca for vehicle availability, coverage maps, details and system limitations. Services and connectivity may vary by model and/or vehicle configuration and conditions as well as geographical and technical restrictions. 4G LTE service available in select markets. Requires active connected vehicle services and a data plan to access the vehicle's built-in Wi-Fi Hotspot. Accessory Power must be active to use the Wi-Fi Hotspot. Data plans provided by AT&T or its local service provider. Credit card is required for purchase. ⁸ Limitations apply. Not transferable. Standard connectivity available to original purchaser for 10 years from the trial activation date for properly equipped vehicles. Visit onstar.ca for details and further plan limitations. Connected Access does not include emergency or security services. Availability of Connected Access and any of its services is dependent on compatible 4G LTE wireless networks and is also subject to change. ⁹ Capabilities vary by model and/or vehicle configuration and service plan. Visit onstar.ca for vehicle availability. Message and data rates may apply. Requires active service, email address on file and enrollment in Vehicle Diagnostics. Not all issues will deliver alerts. On-Demand Diagnostics requires a paid service plan.

SPECIFICATIONS (CONTINUED)

● STANDARD ○ AVAILABLE – NOT AVAILABLE

LS LT PREMIER

PACKAGES AND SPECIAL EDITIONS

LT Convenience Package

– ○ –

Includes Keyless Open and Start, two spare keys, power 6-way driver seat adjuster with power 2-way lumbar control, leather-wrapped 3-spoke steering wheel and Deluxe Cloth/Leatherette seating surfaces

True North Edition

– ○ –

Includes Side Blind Zone Alert¹, Rear Cross Traffic Alert¹, Rear Park Assist¹, power sunroof, 7-speaker Bose premium audio system with Richbass subwoofer, Keyless Open and Start, two spare keys, power 6-way driver seat adjuster with power 2-way lumbar control, leather-wrapped 3-spoke steering wheel and Deluxe Cloth/Leatherette seating surfaces

Redline Edition

– ○ –

Includes 18" Black-finish aluminum wheels with Red accents (REN), P215/55R18 all-season¹ tires, Black Chevrolet bowtie emblems, Black grille with Black surround, Black mirror caps, Black beltline mouldings and Black Trax badge with Red outline (requires available LT Convenience Package and Jet Black interior; available with Silver Ice Metallic, Summit White or Mosaic Black Metallic exterior colours)

DIMENSIONS



EXTERIOR, mm (in.)

Wheelbase	2555 (100.6)
Length	4257 (167.6)
Width	1775 (69.9)
Height – LS FWD	1648 (64.9)
– LS AWD	1656 (65.2)
– LT FWD	1676 (66.0)
– LT AWD	1684 (66.3)
– Premier	1689 (66.5)
Front Track	1540 (60.6)
Rear Track	1540 (60.6)

INTERIOR, mm (in.) front/rear

Headroom	1006/986 (39.6/38.8)
Legroom	1036/907 (40.8/35.7)
Shoulder Room	1374/1341 (54.1/52.8)
Hip Room	1313/1288 (51.7/50.7)

CAPACITIES


Max. Cargo Area, L (cu. ft.) ²	
– Rear Seats in Position	530 (18.7)
– Rear Seats Folded	1371 (48.4)
Fuel Tank, L (imp. gal.), all models	53 (11.7)

CURB WEIGHT, kg (lb.)

– LS FWD	1363 (3005)
– LT AWD	1476 (3254)

ESTIMATED FUEL CONSUMPTION RATINGS, L/100 km (mpg)³

	CITY	HIGHWAY
– FWD	9.1 (31)	7.6 (37)
– AWD	10.0 (28)	8.0 (35)

¹ Read the vehicle Owner's Manual for important feature limitations and information. ² Cargo and load capacity limited by weight and distribution. ³ Fuel consumption estimates based on GM testing in accordance with Government of Canada approved test methods. Refer to vehicles.nrcan.gc.ca for details. Your actual fuel consumption will vary. † All-season tires may not satisfy winter tire requirements in all regions of the country. Tires specifically designed for severe winter conditions and marked with the "winter tire" symbol  may be required during certain months or in certain regions. Contact your Provincial, Municipal or local road authority for information regarding which tires are required in your particular area.



Experience Chevrolet Complete Care, a comprehensive package of owner benefits that are included with every new 2020 Chevrolet Trax leased or purchased in Canada.

Chevrolet Complete Care coverage includes:

- 2-year/24,000 km¹ 2 Complimentary Lube-Oil-Filter Program²
- 3-year/60,000 km¹ Base Warranty Coverage³
- 5-year/100,000 km¹ Powertrain Component Warranty Coverage³
- 5-year/100,000 km¹ Courtesy Transportation⁴
- 5-year/100,000 km¹ 24/7 Roadside Assistance⁴
- 6-year/160,000 km¹ Sheet Metal rust-through perforation coverage³
- 1-month trial of Chevrolet Connected Services and 1 month of OnStar Safety & Security coverage⁵
- Chevrolet Connected Access⁶ includes 10 years of standard connectivity and enables services such as Vehicle Diagnostics⁷ and Dealer Maintenance Notification⁷

Other ownership privileges and programs:⁸

- Chevrolet Protection Plan – the only extended service plan backed by the resources and commitment of General Motors. The Chevrolet Protection Plan may be purchased at the time of vehicle sale or subsequently during the Base Warranty Coverage period⁹
- Chevrolet Owner Centre – Everything you need to know. Anything you need to do. Your Chevrolet Owner Centre makes it easy. Create your account today to get the most out of your new vehicle. Get special alerts and offers, schedule service, review your maintenance schedule, and view how-to videos specifically for your vehicle. All online, anytime. Visit the Owner Centre today to register or take a tour. Find out more at mychevrolet.ca.
- Discount Programs – save on your next vehicle. Students or recent graduates,⁸ people with disabilities⁸ and military personnel⁸ you may be eligible¹⁰ for a discount on select new Chevrolet vehicles leased or purchased. Combine your discount with great retail offers for an exceptional value. For full details on all programs offered in Canada, visit programs.gm.ca.
- GM Card[®] – Cardholders may redeem Earnings towards the total purchase price or lease down payment of an eligible new Chevrolet car, truck or crossover. Restrictions and limitations apply. For full program details, visit gmcards.ca.

Chevrolet ownership experience. Chevrolet is committed to enhancing the vehicle shopping and ownership experience through a wide array of programs. Visit chevrolet.ca to build and price, find a vehicle, request a quote, compare vehicles, find financial tools or track your vehicle order. You'll also find information about 24-hour Roadside Assistance, Courtesy Transportation, Customer Assistance, GM Mobility, safety and current incentives.

Important words about this brochure. Some of the equipment shown or described throughout this brochure may be available at extra cost. We have tried to make this brochure comprehensive and factual. We reserve the right, however, to make changes at any time, without notice, in prices, colours, materials, equipment, specifications, models and availability. Specifications, dimensions,

measurements, ratings and other numbers in this brochure and other printed materials provided at the dealership or affixed to vehicles are approximates based on design and engineering drawings, prototypes and laboratory tests. Your vehicle may differ due to variations in manufacture and equipment. Since some information may have been updated since the time of printing, please check with your Chevrolet dealer for complete details. General Motors of Canada Company reserves the right to lengthen or shorten the model year for any product, for any reason, or to start and end model years at different times. Certain vehicle features may lose their usefulness over time due to obsolescence from technological changes. Unless otherwise noted, all claims based on the GM Small SUV segment and the latest available competitive information. Excludes other GM vehicles.

Engines. Chevrolet products are equipped with engines produced by GM Global Propulsion Systems or other suppliers to GM worldwide. The engines in Chevrolet products may also be used in other GM makes and models.

Assembly. Chevrolet vehicles and their components are assembled or produced by different operating units of General Motors, its subsidiaries or suppliers to GM worldwide. We sometimes find it necessary to produce Chevrolet vehicles with different or differently sourced components than originally scheduled. Since some options may be unavailable when your vehicle is assembled, we suggest you verify that your vehicle includes the equipment you ordered and that, if there were changes, they are acceptable to you.

Fleet orders. Some standard content and owner benefits may be modified or deleted on fleet orders. See dealer for details.

An important note about alterations and warranties. Installations or alterations to the original equipment vehicle (or chassis) as distributed by General Motors are not covered by the New Vehicle Limited Warranty. The special body company, assembler, equipment installer or upfitter is solely responsible for warranties on the body or equipment and any alterations (or any effect of the alterations) to any of the parts, components, systems or assemblies installed by GM. General Motors is not responsible for the safety or quality of design features, materials or workmanship of any alterations by such suppliers.

Trademarks. The marks appearing in this brochure including, but not limited to, General Motors, GM, Chevrolet, the Chevrolet emblem, Trax and their respective logos, emblems, slogans and vehicle model names and body designs; and other marks such as ECOTEC, Find New Roads, myChevrolet, OnStar, the OnStar emblem and StabiliTrak are trademarks of General Motors LLC, OnStar LLC and/or General Motors of Canada Company, its subsidiaries, affiliates or licensors. Apple, Apple CarPlay and iPhone are trademarks of Apple Inc., registered in the U.S. and other countries. Bluetooth is a registered trademark of Bluetooth SIG, Inc. Bose and Richbass are registered trademarks of the Bose Corporation. Facebook is a registered trademark of Facebook, Inc. © 2019 Sirius XM Canada Inc. "SiriusXM," the SiriusXM logo, channel names and logos are registered trademarks of Sirius XM Radio Inc. and are used under license. All rights reserved. Twitter is a trademark of Twitter, Inc. YouTube is a registered trademark and Android and Android Auto are trademarks of Google LLC. Wi-Fi is a registered trademark of Wi-Fi Alliance.

©Copyright 2019 General Motors of Canada Company. All rights reserved. All text, images, graphics, and other materials in this brochure are subject to the copyright and other intellectual property rights of General Motors LLC and/or General Motors of Canada Company. These materials may not be reproduced, distributed or modified without the express written permission of General Motors LLC and/or General Motors of Canada Company. September 2019.



¹ Whichever comes first. ² Limit of two (2) Lube-Oil-Filter services during the program period. Fluid top-offs, inspections, tire rotations, wheel alignments and balancing, etc., are not covered. Additional conditions and limitations apply. See participating dealer for details. ³ Conditions and limitations apply. See Warranty Booklet for details. ⁴ Conditions and limitations apply. See Owner's Manual for details. ⁵ Properly equipped Chevrolet vehicles are eligible for 1 month of Connected Services trial and OnStar Safety & Security Plan coverage, starting at trial activation date; includes emergency and navigation services, the Remote Access Plan, plus a 3 GB or 1-month (whichever comes first) data plan trial. Services subject to user terms and limitations, and capabilities vary by model and/or vehicle configuration; visit onstar.ca for details. Data plans offered by AT&T or its local service provider. Availability subject to change. GM Canada may modify, extend or terminate offers for any reason, in whole or in part, at any time, without notice. Requires vehicle electrical system (including battery), wireless service and GPS satellite signal to be available and operating for features to function properly. ⁶ Limitations apply. Not transferable. Standard connectivity available to original purchaser for 10 years from the trial activation date for properly equipped vehicles. Visit onstar.ca for details and further plan limitations. Connected Access does not include emergency or security services. Availability of Connected Access and any of its services is dependent on compatible 4G LTE wireless networks and is also subject to change. ⁷ Capabilities vary by model and/or vehicle configuration and service plan. Visit onstar.ca for vehicle availability. Message and data rates may apply. Requires active service, email address on file and enrollment in Vehicle Diagnostics. Not all issues will deliver alerts. On-Demand Diagnostics requires a paid service plan. ⁸ Conditions and limitations apply. ⁹ Please work with your dealer to select the plan that is suitable for your driving needs. Dealers are free to set their own prices. ¹⁰ Subject to eligibility.

FIND NEW ROADS™

CHEVROLET.CA

