

LR3 • LR4

KIT



**LR4 2010+ AND LR3 2005-2009
MODEL YEAR ACCESSORIES**



Land Rover vehicles are bold, versatile and luxurious, with a groundbreaking design that incorporates many practical features as standard. But because every owner enjoys his or her own unique lifestyle and pursuits, there is a range of specialized items to bring even more style and added capability to your Land Rover. And, most accessories can be added at any stage during your vehicle's life. These latest accessories may be suitable for both LR4 and LR3 models. Please ask your Land Rover retailer for details.

WHEELS

Add a touch of even greater individuality

PAGES
2-4

EXTERIOR

Tailor your Land Rover's elegant lines to suit your own unique tastes

PAGES
5-15

CARRYING AND TOWING

Sometimes even a Land Rover takes on added capacity

PAGES
16-20

INTERIOR

Luxury and practicality

PAGES
21-24

TOURING

To assist you in your travels

PAGE
25

SUSTAINABILITY

Land Rover's commitment

PAGES
26-27

Why Buy Genuine Land Rover KIT?

KIT: The Land Rover Retailer-fitted vehicle accessory range engineered specifically for Land Rovers

Just as all Land Rover vehicles deliver outstanding on- and off-road performance, so does the extensive range of Land Rover engineering-approved accessories. As a complement to the Land Rover owner's lifestyle, these accessories are engineered to ensure seamless integration with Land Rover vehicles.

KIT has no equal — ranking above any aftermarket counterpart — when it comes to proper performance with Land Rovers. Here's why:

PREDICTIVE ANALYSIS

Using the latest predictive stress analysis methods validates the safety and durability of Land Rover KIT.

VIRTUAL ENGINEERING

Computer-Aided Design helps ensure that accessories are conceived to complement the vehicle's lines and stylish looks. This ensures the high quality of fit and finish one expects from Land Rover.

ENVIRONMENTAL

Different climates provide different challenges for these accessories. Land Rover KIT is tested under a range of climate conditions to ensure quality performance.

DURABILITY

All accessories undergo the same test plan as the vehicles themselves — rigorously analyzed far beyond the extremes of normal customer use.

RIG TESTING

Heavily integrated parts, such as roof bars, are developed and tested very early on during vehicle development to ensure seamless compatibility.

WARRANTY

KIT is covered by the same limited new vehicle warranty as your Land Rover when installed at the time of customer delivery.



WHEELS

Make your Land Rover stand out with a smart set of alloy wheels. Choose from a range of striking designs, each tested to perform far in excess of normal driving situations. And for adverse conditions, a snow traction system and mudflaps can assist you and your vehicle.



19-inch 6-Spoke Alloy Wheel (Rim only)
Shadow Chrome Finish — RRC002900MNL
2005-09 vehicles only

Recommended Tire:
255/55 R19 111V A/T

Center Cap
Shadow Chrome Finish — RRJ500030MNL
Bright Polished Finish — RRJ500060MUZ



19-inch 7-Split Spoke Alloy Wheel (Rim only)
Sparkle Silver Finish — LR013925
For 2009 vehicles onward

Recommended Tire:
255/55 R19 111V A/T

Center Cap
Sparkle Silver Finish — RRJ500030MNM



19-inch 7-Spoke Alloy Wheel (Rim only)
Sparkle Silver Finish — LR008547
For 2009 vehicles onward

Recommended Tire:
255/55 R19 111V A/T

Center Cap
Sparkle Silver Finish — RRJ500030MNH



20-inch 8.5J 5-Spoke Alloy Wheel (Rim only)
Diamond Turned Finish — VPLAW0002*
For 2009 vehicles onward

Recommended Tire:
Pirelli Scorpion Zero 255/50 ZR20 109Y

Center Cap
Bright Polished Finish — RRJ500060MUZ



20-inch 8.5J 10-Spoke Alloy Wheel (Rim only)
Titan Silver Finish — VPLAW0003*
For 2009 vehicles onward

Recommended Tire:
Pirelli Scorpion Zero 255/50 ZR20 109Y

Center Cap
High Gloss Finish — RRJ500030MCM

*Please note: Must be ordered as a set of five 20" wheels per vehicle and each 2009 vehicle must have a tire information label fitted. (All markets except North America VPLAW0004; for North American markets VPLAW0005.) Please see your Land Rover retailer for further information.

When choosing vehicles fitted with specific wheel and tire combinations or optional wheels and tires, your intended use of the vehicle should be considered. Wheels with larger diameters and lower profile tires may offer certain styling or driving benefits, but may be more vulnerable to damage. Please discuss your requirements with a retailer when selecting your vehicle and specification.



Wheel Locks

Help protect your Land Rover's wheels from theft with locking wheel nuts that can be removed only with a special tool that accompanies the kit.

For 2006 vehicles onward — VUB504120



Valve Stem Caps

Enable the Land Rover presence to permeate every detail of your vehicle — right down to its tire valve stem caps (Tire Pressure Monitoring System-compatible).

Full-color Land Rover logo — LR006186

Black logo on silver background — LRN90310



Snow Traction Control System

For enhanced traction on snowy or icy surfaces, conveniently fasten the Snow Traction Control System to your Land Rover's front wheels. Sold in sets of two.

For 17" wheels — VUJ000010

For 2005-09 vehicles (18" and 19" wheels) — VUJ000020

Spike Spider Snow Traction System

With its Spike Spider design, this snow traction system can be easily attached to, or removed from, your Land Rover's front wheels.

For 18", 19" and 20" wheels — LR005737



Center Caps

Add a distinctive finishing touch to your Land Rover's wheels with attractive Center Caps.

Green Gold logo on Sparkle Silver cap — RRJ500030MNH

Black Silver logo on Sparkle Silver cap — RRJ500030WYS

Green Gold logo on Bright Silver cap — RRJ500030MCM

Black Silver logo on Bright Silver cap — RRJ500030WYT

Green Gold logo on Chrome cap — RRJ500060WYU

Black Silver logo on Chrome cap — RRJ500060MUZ



EXTERIOR

Exterior accessories for your Land Rover combine rugged protection with stylish looks. The protection bars and lamp guards can lead a punishing life if full use is made of your vehicle's impressive all-terrain potential. Doors and sills also can find life tough, so Land Rover designed side steps, body side moldings and protection tubes to help prevent stone chips, scuffs and scrapes, whether you're crossing the countryside or the parking lot.



Protection Bar

Made from soft-feel polyurethane. Compatible with the Electric Winch. Driving Lamp Kit not included. Available late March 2010. For 2010 vehicles only — VPLAP0022



A-Frame Protection Bar

Made from soft-feel polyurethane. Includes front Park Distance Control adaptation kit, if required.

For 2005-09 vehicles — LR005237

For 2005-09 vehicles (with winch compatibility)

— LR005743 (not shown)

Protection Bar License Plate Bracket

For 2005-09 vehicles only — VUB500670



Brush Bar

This black, one-piece, nylon-coated steel wraparound bar enhances your LR3's front bumper protection.

For 2005-07 vehicles — VUB501270

For 2005-07 vehicles (with winch compatibility)

— VUB502660

Wraparound Protection Bar

Front bumper protection comes in the form of this modular steel wraparound bar. (Not compatible with vehicles equipped with Adaptive Cruise Control or Front Park Distance Control.)

For 2005-09 vehicles only — VUB502510



Rear Lamp Guards

These attractive lamp guards combine rugged protection with stylish looks.

For 2010 vehicles onward — VPLAP0009



For 2005-09 vehicles — VUB502590



Driving Lamp Kit

High performance driving lamps supplied with covers.
Additional mounting brackets required.

For 2010 vehicles onward — VUB501471

For 2010 vehicles onward with winch compatibility
— VPLAV0019

For 2005-09 vehicles — VUB502850*

Driving Lamp Mounting Brackets

A pair of direct-to-bumper brackets.

For 2010 vehicles onward — VPLAV0020

For 2010 vehicles onward with Protection Bar
— VPLAV0021

For 2005-09 vehicles — VUU500110*

For 2005-09 vehicles (modular steel for Brush Bar
mounting) — VUU5000140*

Driving Lamp Covers* (not shown)

VUS500010

Snap-on Hard Covers

Protect your Driving Lamp Kit with these clear hard covers
that easily snap into place. Helps comply with certain state
regulations; see your retailer for more information.

For 2005-09 vehicles only — VUS500040

*Not compatible with the Body Styling Pack Front Bumper



Bright Finish Mirror Kit

For 2010 vehicles onward (Upper) — VPLMB0041



Fixed Side Steps

For 2010 vehicles onward — VTK500010

Stainless Steel Rear Bumper Tread Plate

For 2010 vehicles onward — LR006874



Stainless Steel Finisher Pack

Includes the Stainless Steel Lower Door Trim Finisher (shown below) and the Stainless Steel Tailgate Trim Finisher (shown at left).
For 2010 vehicles onward — VPLAB0044





Side Protection Tubes (Stainless Steel)
For 2010 vehicles onward — VTD500020



Side Protection Tubes (Black Steel)
For 2010 vehicles onward — VTD500010

Body Side Moldings
For 2010 vehicles onward — VPLAP0012



Body Side Moldings with Bright Insert
For 2010 vehicles onward — VPLAP0013





Underbody Protection

For 2010 vehicles onward with a winch — VPLAP0025



Underbody Protection

For 2010 vehicles onward without a winch — VPLAP0024



Underbody Protection

For 2005-09 vehicles without a winch — LR007483
For 2005-09 vehicles with a winch (not shown) — KRQ500010



Front Mudflaps

For 2010 vehicles onward — CAS500010PCL



Rear Mudflaps

For 2009 vehicles onward — VPLAP0017
For 2009 vehicles — VPLAP0002
For 2005-08 vehicles — CAT500010PCL



LR G4 Decal Kit

Proclaim your sense of adventure with this unique LR G4 decal.
HLD501083EMC



Chrome Fender Vent – Satin Finish
This accessory is not available for 2010 model year vehicles.

For 2005-09 vehicles only — LR006873



Raised Air Intake

Not compatible with 5.0L V8 gasoline models. Additional parts are required for 3.0L TDV6 models. Please see your Land Rover retailer for more information. **This accessory is not available for 2010 model year vehicles.**

For 2005-09 vehicles — ADL780010



Body-Colored Tailgate Latch

This accessory is not available for 2010 model year vehicles.

Zermatt Silver — LR007101

Other available colors (not shown)

Buckingham Blue — LR007098

Java Black — LR007102

Stornoway Grey — LR007099

Tonga Green — LR007097

Primed — LR007100



Body Styling Pack (2005-09 vehicles only)
Includes a deeper, body-colored Front Bumper, contemporary Fog Lamp design, Stainless Steel Lower Panel, Front PDC Sensors, Power Wash, and a Rear Bumper Undertray Molding. Twin Exhaust Finishers (LR007554) must be ordered with the Body Styling Pack.
Java Black — LR007646
Stornoway Grey (shown here) — LR007644
Zermatt Silver — LR007645

The accessories on these two pages are not available on the 2010 model year LR4.



Body-Colored Wheel Arch Moldings (2005-09 vehicles only)

Bonatti Grey — DGP500580LAL
Buckingham Blue — LR007049
Java Black — DGP500580PNF
Stornoway Grey — LR007048
Tonga Green — LR007050
Zermatt Silver (shown here) — DGP500580MBK



Body-Colored Mirror Caps (2005-09 vehicles only)

Buckingham Blue — LR004863	Tonga Green — LR007531
Chawton White — LR004862	Zermatt Silver (shown here) — LR004836
Java Black — LR004864	Bright Finish (Upper) — VUB503880MMM
Rimini Red — LR004833	Bright Finish (Lower) — LR003905
Santorini Black — VPLAB0011PAB	Primed (Upper) — LR004867
Stornoway Grey — LR004837	Primed (Lower) — R004866



Body-Colored Door Handles (2005-09 vehicles only)

Buckingham Blue — LR006944
Java Black — LR006949
Rimini Red — LR006942
Santorini Black — VPLAB0010PAB
Stornoway Grey — LR006945
Tonga Green — LR006943
Zermatt Silver (shown here) — LR006946



Washer Jet Cap (2005-09 vehicles only)

Buckingham Blue — LR007921
Java Black — LR007916
Rimini Red — LR007919
Stornoway Grey — LR007917
Tonga Green — LR007920
Zermatt Silver (shown here) — LR007918



Body-Colored Tailgate Rear Spoiler (2005-09 vehicles only)
 Buckingham Blue — LR007577
 Java Black — LR007581
 Santorini Black — VPLAB0009PAB
 Stornoway Grey (shown here) — LR007578
 Tonga Green — LR007576
 Zermatt Silver — LR007580



Land Rover Logo Plates

Trumpet the arrival of your vehicle with these durable, stylish Land Rover Logo Plates which feature a domed raised medallion mounted on the plate.

Brushed Silver — LR007528
 Matte Black — LR007529



License Plate Frames

Add a stylish accent to your Land Rover with an attractive License Plate Frame.

Matte Black Finish — LRN91640
 Brushed Silver Finish — LRN91650
 Polished Silver Finish — LRN91660
 Matte Black Finish with Land Rover Logo — LRN91610
 Brushed Silver Finish with Land Rover Logo — LRN91620
 Polished Silver Finish with Land Rover Logo — LRN91630

Stainless Steel Finisher Kit (2005-09 vehicles only)

Includes a Stainless Steel Lower Tailgate Trim Finisher, Stainless Steel Lower Door Trim Finisher and Stainless Steel Grille Center Vane.
LR007534

Other Body Styling Features (2005-09 vehicles only)

- Body-Colored Wheel Arch Moldings (shown below)
- Body-Colored Tailgate Lift Handle Assembly (shown right)
- Body-Colored Door Handles (shown below) and Mirror Caps
- Full-Length Roof Rail Kit — Bright Finish
- 20-inch 8.5J 5-Spoke Alloy Wheels — Diamond Turned Finish



Wind Deflectors

Limit wind noise and airflow into your Range Rover Sport when driving with the windows open with these easy-to-attach smoke-colored Wind Deflectors.

Sunroof — LR006514

Side Windows — LR006513

Hood — LR006515



CARRYING AND TOWING

From sailboards and skiing gear to more extreme pursuits, your Land Rover's carrying and towing equipment can help handle the load. Eight different specialized roof carrying systems are available to transport a wide range of items, plus there's a rear-mounted carrier to satisfy bike enthusiasts. And if loads are too big for the roof, choose from two different tow bars to make use of your Land Rover's impressive towing capability.



Rear Ladder

For 2010 vehicles onward — AGP780020

*Roof Rails and Crossbars are required for all Land Rover roof-mounted accessories. Objects placed above the roof-mounted satellite antenna may reduce the quality of the signal received by the vehicle and could have a detrimental effect on the navigation and satellite radio systems, if fitted.



Sports Box*

Lockable for security. Can be mounted either way for curbside opening in any country. Internal retention system for skis or other long loads. External dimensions: 90" long x 24" wide x 15" high. Volume: 105 gallons. Load capacity: 124 lbs. CAK500020



Expedition Roof Rack*

Vehicle must be fitted with a Short Roof Rail Kit CAB500120PVJ/CAP500090. Vehicle height when fitted at normal ride height: 82½". Load capacity: 119 lbs. CAB500021PMA

Cross Bar Kit

Adjustable position crossbars, for carrying all Land Rover roof-mounted accessories featured. Easily removed when not in use. Lockable for security. Vehicle height when fitted at normal ride height: 78". Load capacity: 158 lbs. Vehicle must have factory-fit roof rails fitted or Roof Rail Kit CAB500120PVJ (not shown) /CAP500090/LR006442. VPLAR0001



Lashing Eye Kit

Six additional tie-down points for use with T-slots on Crossbars. VUB503160



Ratchet Strap

Nylon tie strap for securing items to the Crossbars, Luggage Carrier or Expedition Roof Rack. 16' long x ¾" wide; supplied individually. CAR500010



Full Length Roof Rail Kit – Bright Finish
LR006442



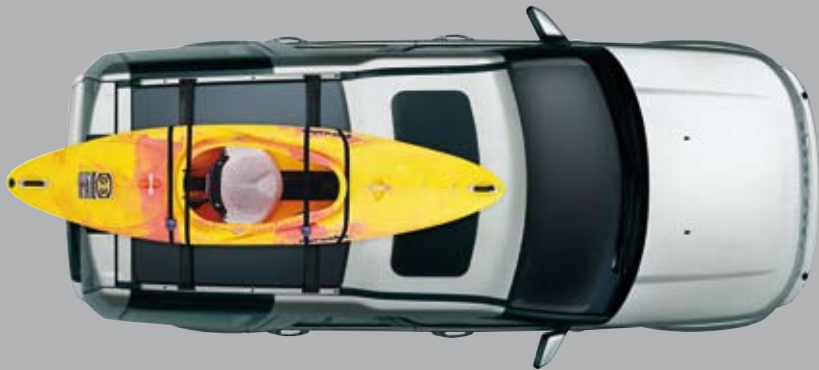
Luggage Box*
Lockable for security. Opens from both sides.
External dimensions: 63" long x 37½" wide x 16" high. Volume: 118 gallons.
Load capacity: 120 lbs.
VPLDR0003



Short Roof Rail Kit – Bright Finish
Designed for vehicles not fitted with factory-fit roof rails.
CAP500090



Luggage Carrier*
Load capacity: 138 lbs.
LR006848



Aqua Sports Carrier*
Carries one surfboard or sailboard and mast, or one canoe or kayak.
Load capacity: 99 lbs.
LR006846



Ski and Snowboard Carrier*
Lockable for security. Carries four pairs of skis or two snowboards.
Incorporates slider rails for easy loading. Load capacity: 79 lbs.
LR006849

Ski Carrier (not shown)
Maximize your Land Rover's interior space by transporting skis with this durable, roof-mounted Ski Carrier. Choose from two models. Carrier for 3 pairs of skis — LRN50141

*Roof Rails and Crossbars are required for all Land Rover roof-mounted accessories. Objects placed above the roof-mounted satellite antenna may reduce the quality of the signal received by the vehicle and could have a detrimental effect on the navigation and satellite radio systems, if fitted.



Rolling Duffel Bag

This rainproof duffel bag features 4 cu. ft. of storage, a telescoping handle and inline wheels. It easily attaches to, and detaches from, the Luggage Carrier (LR006848).
LR004681



Roof Cargo Bag

Store up to 15 cu. ft. of goods in this durable, attractive bag. Made from weatherproof materials and comes with eight straps. Works ideally with the Luggage Carrier (LR006848).
LR004683



Bungee Cargo Net

Secure cargo with this durable cargo net that will not rust or scratch your gear. Extremely flexible, this net works especially well with the Land Rover Luggage Carrier (LR006848).
LR005083



Cargo Carrier

This durable, lockable 13.5-cu.-ft. storage pod (250-lb. capacity) conveniently swings away for easy access to the trunk or rear cargo space. It comes with tail lights and a detachable 21" x 49" tray.

Note: Requires quick release Tow Hitch Receiver (KNB500080) and Towing Electrics (YWJ500220 or VPLAT0013, depending on model year), sold separately for installation.

LR004682



Bike Carrier (Ride Ready)

Securely transport your bike on the roof of your LR3 with this durable, lockable carrier which conveniently requires no disassembly of the bike. LR006847



Swing-Away Bike Rack

Secure bikes, skis or snowboards with this durable rack which conveniently mounts to your Tow Hitch Receiver (accessory KNB500080) and swings away for easy loadspace access.

Carrier for 4 bikes — LR008387



Drawbar/Adapt-a-Ball Set

For use with the Tow Hitch Receiver, this Drawbar Set includes a 2-inch tow bar, 3 different-sized adapt-a-balls, a locking hitch pin and a molded carrying case. Its specs include a 9-inch length, 3/4-inch rise, 2-inch drop and 550-lb. tongue weight. Note: Requires Tow Hitch Receiver (KNB500080). VUB504010



Tow Hitch Receiver

This robust Tow Hitch Receiver delivers a 7,716-lb. trailer load capacity and a tongue weight capacity of 550 lbs. The receiver easily detaches from your Land Rover and is lockable for security. KNB500080

Towing Electrics

Centrally mounted sockets in your Land Rover's rear bumper provide electric power and rear lighting for your trailer. (Not pictured)

For 2010 vehicles onward — VPLAT0013

For 2005-09 vehicles — YWJ500220

Quick Release Tow Bar Storage (not shown)

Hidden loadspace storage block.

7-seat vehicles only.

For 2010 vehicles onward — VV0500020

Tow Strap (not shown)

Includes storage bag that can be attached as a warning flag to the strap. Maximum load capacity: 6,615 lbs.

For 2010 vehicles onward — STC8919AA

Note: The **Tracking Target Sticker** is required for vehicles fitted with the Trailer Assist option. Please contact your Land Rover Retailer for further details.

Electric Winch

VUB501471

9,500-lb. maximum load capacity. Includes cover for protection when not in use. Plug-in remote control allows safe operation from up to 3.6m.

Compatible with Protection Bar (VPLAP0022)

Winch Accessory Kit

(not shown) STC53202

Includes strap, snatch block, two shackles, heavy duty gloves and a storage bag.

INTERIOR

Your Land Rover's intuitive, sumptuous interior exudes craftsmanship and comfort. There is also the opportunity to add even more practicality with accessories such as a cargo barrier, stainless steel sill tread plates and waterproof seat covers.



Bright Finish Gear Change and Cup Holder Surrounds
For 2005-09 vehicles only — VUB501166

Chrome Finish Door Waist Rails (set of 4)
For 2005-09 vehicles only (not shown) — BHR780310

Note: The Surrounds, Door Waist Rails, Air Intake Grille and Tailgate Lower Trim listed here are from the LR3 Reflections KIT.

Chrome Finish Air Intake Grille
For 2005-09 vehicles only (not shown) — JAK000065MMM

Chrome Finish Tailgate Lower Trim
For 2005-09 vehicles only (not shown) — DGP000185MMM



Grey Birdseye Maple Fascia Kit
For pre-2008 SE and HSE models — VUB504360



Burr Walnut Fascia Kit
Comprises center console panel and air vent surrounds.
For pre-2008 SE and HSE models — VUB504370

Cargo Barrier

Easily removed. Can be fitted with Loadspace Rubber Mat or Loadspace Protector (EBF500080) and used with standard loadspace cover roller blind.
For 2010 vehicles onward
— VUB501170



Cargo Divider

Separates pets from cargo. Lockable outer gate on one side. Must be fitted with Cargo Barrier. Can be fitted with Loadspace Rubber Mat and Loadspace Protector (EBF500080). Not compatible with standard loadspace cover roller blind.
For 2010 vehicles onward
— EOH500040



Loadspace Protector

For 2010 vehicles onward (Cargo Barrier and Cargo Divider compatible) — EBF500080
For 2010 vehicles onward (Not compatible with the Cargo Barrier) — EBF500010



Flexible Loadspace Protector

Heavy duty fabric protects loadspace up to window height. Also covers loadspace floor with second row seats folded. Includes heavy duty gloves.
For 2010 vehicles onward — VPLAS0015
For 2005-09 vehicles — VPLAS0002



Loadspace Rubber Mat

Waterproof with retaining lip and non-slip surface.
For 2010 vehicles onward — LR006401

Premium Carpet Mat Set

Deep pile carpet with waterproof backing.

For 2009 vehicles onward (Nutmeg) — VPLAS0023SVB
For 2008 vehicles onward (Alpaca) — LR006433
For 2008 vehicles onward (Ebony) — VPLAS0023PVJ
For 2005-07 vehicles (Bahama Beige) — EAH500081SUC
For 2005-07 vehicles (Ebony) — EAH500080PVJ

Ebony Carpet Mats (set of 4)
EAH500019MMM



Rubber Mat Set

For 2008 vehicles onward — LR006238
For 2005-07 vehicles — EAH500050PMA

Rubber Mats — Third Row
(not shown)
EAH500100PMA



Rubber-Backed Carpet Mat Set

This stain-resistant carpet set features rubber backing and a retainer lip. Set includes first- and second-row mats.

For 2005-07 vehicles (Alpaca) — EAH500042SUC
For 2005-07 vehicles (Ebony) — EAH500040PVJ



Waterproof Seat Covers

These washable, fire-retardant seat covers are made from 100 percent nylon and are impervious to mud, oil, water, suntan lotion and muddy paws. Includes headrest and armrest covers. Colors shown may differ from the actual product.

Front Seat Pair (not shown)
For 2010 vehicles onward (Almond) — VPLAS0029SVA
For 2010 vehicles onward (Ebony) — VPLAS0029PVJ
For 2005-09 vehicles (Aspen) — LR005213
For 2005-09 vehicles (Sand) — LR005214

For DVD Headrest Seats

Front Seat Pair
For 2010 vehicles onward (Almond) — VPLAS0030SVA
For 2010 vehicles onward (Ebony) — VPLAS0030PVJ
For 2005-09 vehicles (Aspen) — VPLAS0009LUP
For 2005-09 vehicles (Sand) — VPLAS0009SUN

Rear 5-Seat 35/30/35

(not shown)
For 2010 vehicles onward (Almond) — VPLAS0031SVA
For 2010 vehicles onward (Ebony) — VPLAS0031PVJ
For 2005-09 vehicles (Aspen) — LR005217
For 2005-09 vehicles (Sand) — LR005218

Rear 5-Seat 70/30

(not shown)
For 2010 vehicles onward (Almond) — VPLAS0032SVA
For 2010 vehicles onward (Ebony) — VPLAS0032PVJ
For 2005-09 vehicles (Aspen) — LR005219
For 2005-09 vehicles (Sand) — LR005220

Rear Set and Third Row 7-Seat

(not shown)
For 2010 vehicles onward (Almond) — VPLAS0033SVA
For 2010 vehicles onward (Ebony) — VPLAS0033PVJ
For 2005-09 vehicles (Aspen) — LR005221
For 2005-09 vehicles (Sand) — LR005223



Sports Pedal Covers

Bright Finish covers enhance existing footrest and pedal covers.
For 2005-09 vehicles only — LR008713



Stainless Steel Sill Tread Plate
Covers front and rear door sills.
EBN500041



Sliding Loadspace Floor
Aids loading and unloading of the luggage compartment. May be locked at different points along the slider rails. Easily removed for unfolding of third-row seats. Will accept loadspace tie-down points. Includes cargo net. Load capacity: 330 lbs. For 2005 vehicles onward — VTO500010



Luggage/Load Retention Net
Secure items in your loadspace with a flexible Luggage/Load Retention Net. With its pair of 78" ratchet straps, it works with tie-down points on the loadspace floor to hold your cargo in place. (Pictured here in the Range Rover.)
VUB503130



Collapsible Cargo Carrier
Store items during transport with this handy Collapsible Cargo Carrier. Includes separators for added convenience.
EEA500050PVJ

TOURING ACCESSORIES



Electric Cool Bag

Powered by the 12-volt auxiliary socket. Thermostatically controlled temperature. Easy clean interior surfaces. Dimensions: 14" tall x 14" long x 8½" wide. Volume: 14 quarts. VUP100140L

Cool Box (not shown)

Designed to fit within the Cubby Box, accommodates mobile phone cradle installation.

For 2005-09 vehicles only

— FJB500072PVJ

Bulb Kit (not shown)

For 2010 vehicles — VPLAV0018

For 2005-09 vehicles —

VUB501080

Touch-up Paints (not shown)

A comprehensive range of touch-up paint sticks and aerosols will help your Land Rover look as good as new despite those minor chips and scrapes. Ask your Land Rover retailer for details.

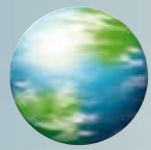


Car Cover

Shield your Land Rover from dust, dirt and other particles with this durable Car Cover. Ideal for the indoors or outdoors, it conveniently stores when not in use.

VUB504140





landrover.com/ourplanet

Our commitment is to a sustainable future. In everything from the design of our vehicles and the way we build them to how and where we use them and, at the end of their life, how they can be safely disposed of, Land Rover is committed to a sustainable future. We're committed to reducing our impact on the environment and are working in four key areas.



e_TERRAIN TECHNOLOGIES

In 2007 we announced a joint investment into new technologies to improve the environmental performance of our vehicles. This joint investment now stands at \$1.3 billion. In 2008, we revealed our new concept vehicle, the LRX; a Land Rover in body and spirit but conceived as a hybrid 2.0-liter diesel with potential CO₂ emissions of 120g/km.



SUSTAINABLE MANUFACTURING

World-class manufacturing facilities. Certified to ISO 14001 since 1998. Our manufacturing facilities at Solihull and Halewood have reduced emissions by around 4 percent year on year, over the past 5 years. Total energy used in manufacturing each vehicle has been reduced by 19 percent since 2002 while water use per vehicle has been cut by 14 percent over the same period. We're also offsetting all CO₂ emissions by the manufacturing assembly of Land Rover vehicles at both plants. Partnered with specialist organization Climate Care, our projects include a wind farm in China and hydroelectric generators in Tajikistan. In addition, Land Rover vehicles are now designed to be 85 percent recyclable with all current models meeting the European End of Life Vehicles Directive. Sustainable and recyclable materials play an important role too: LR2 contains 10 percent recycled and 10 percent renewable materials.



CO₂ OFFSETTING

In 2006, in the UK, we launched a pioneering program for customers, independently administered by Climate Care, to offset CO₂ emissions for the first 45,000 miles of all new Land Rovers. This program is being rolled out progressively to other countries around the world. We're also the first automotive company to offset 100 percent of our manufacturing assembly CO₂ emissions.



GLOBAL CONSERVATION AND HUMANITARIAN PROJECTS

Land Rover vehicles are used by conservation and humanitarian organizations worldwide and are often first choice for difficult tasks. Organizations include the Born Free Foundation, Biosphere Expeditions, Royal Geographical Society (with IBG), China Exploration and Research Society and Earthwatch Institute. Our projects are diverse, ranging from an initiative to help with the protection of rare wolves in Ethiopia, to a project funded by our CO₂ offset program that provides efficient cooking stoves to rural parts of Uganda.

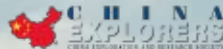
OUR PLANET

We take our responsibility to our planet very seriously. Our vehicles are designed for purpose. As part of our Fragile Earth policy, Land Rover has actively promoted responsible off-road driving since 1990. Our Experience Centers teach drivers to understand the full potential and unique breadth of the capability of their vehicles while reducing impact on nature and the environment in a wide range of activities.

To find out more, and to see our progress, visit www.landrover.com/ourplanet.



Advancing geography and geographical learning



INDEX

A	Page
A-Frame Protection Bar.....	6
Air Intake Grille.....	21
Alloy Wheels.....	2-3
Aqua Sports Carrier.....	17

B	
Bike Carrier.....	19
Body Side Moldings.....	9
Body Styling Pack.....	12
Brush Bar.....	6
Bulb Kit.....	25
Bungee Cargo Net.....	18

C	
Car Cover.....	25
Cargo Barrier.....	22
Cargo Carrier.....	19
Cargo Divider.....	22
Carpet Mats.....	23
Center Caps.....	4
Chrome Fender Vent.....	11
Collapsible Cargo Carrier.....	24
Cool Box.....	25
Cross Bar Kit.....	16

D	Page
Door Handles.....	13
Door Waist Rails.....	21
Drawbar/Adapt-a-Ball Set.....	20

Driving Lamp Covers.....	7
Driving Lamp Kit.....	7
Driving Lamp Mounting Brackets.....	7

E	
Electric Cool Bag.....	25
Expedition Roof Rack.....	16

F	
Fascia Kits.....	21

G	
Gear Change and Cupholder Surrounds.....	21

L	
Lashing Eye Kit.....	16
License Plates and Frames.....	14
Loadspace Protectors.....	22
Loadspace Rubber Mat.....	22
LR G4 Decal Kit.....	11
Luggage Box.....	17
Luggage Carrier.....	17
Luggage/Load Retention Net.....	24

M	
Mirror Caps.....	13
Mirror Kit.....	8
Mudflaps.....	10

P	
Protection Bar.....	5

R	Page
Raised Air Intake	11
Ratchet Strap	16
Rear Bumper Tread Plate.....	8
Rear Lamp Guards	6
Rolling Duffel Bag.....	18
Roof Cargo Bag.....	18
Roof Rail Kits	17
Rubber-Backed Carpet Mats	23
Rubber Mats.....	23
S	
Seat Covers	23
Side Protection Tubes.....	9
Side Steps.....	8
Sill Tread Plate.....	24
Ski and Snowboard Carrier.....	17
Ski Carrier	17
Sliding Loadspace Floor.....	24
Snap-on Hard Covers.....	7
Snow Traction Control Systems.....	4
Sports Box	16
Sports Pedal Covers	23
Stainless Steel Finisher Kit.....	15
Stainless Steel Finisher Pack	8
Swing-Away Bike Rack.....	19

T	Page
Tailgate Latch.....	11
Tailgate Lower Trim.....	21
Tailgate Rear Spoiler	14
Touch-up Paints	25
Tow Bar Stowage.....	20
Tow Hitch Receiver	20
Towing Electrics	20
Tow Strap	20
U	
Underbody Protection.....	10
V	
Valve Stem Caps	4
W	
Washer Jet Caps	13
Wheel Arch Moldings.....	13
Wheel Locks	4
Winch.....	20
Winch Accessory Kit.....	20
Wind Deflectors.....	15
Wraparound Protection Bar	6

All Land Rover-approved Accessories fitted by a Land Rover Retailer within one month or 1,000 miles (whichever occurs first) of the handover of a new vehicle will benefit from the same warranty terms and period of cover as the vehicle warranty. Accessories purchased outside of these parameters will be subject to a 12-month unlimited mileage warranty. All Land Rover-approved Accessories are rigorously tested to the same exacting standards as those applied to our vehicles. Performance in extreme hot and cold temperatures, corrosion resistance, impact and airbag deployment highlight some of the exhaustive product testing carried out to ensure accessories are both durable and, importantly, continue to comply with current legislation.

All our accessories are designed to be an integral part of Land Rover vehicles. While many items such as roof carriers are simple to fit, some products require specialist tools and diagnostic equipment to ensure correct integration with the vehicle structure and electrical systems. Although Land Rover takes the utmost care in ensuring that all details in the publication are correct at the time of going to press, we are constantly striving for improvement and therefore reserve the right to alter specifications and equipment without notice. Details of specifications and equipment are also subject to change to suit local market conditions and requirements, and not all products are available in every market. Some vehicles are shown with accessories or optional equipment fitted. These products vary from market to market. Please consult your Land Rover Retailer who will be pleased to advise you on current specifications. Distributors and Retailers are not agents of Land Rover and have absolutely no authority to bind Land Rover to any express or implied undertaking or representation.



Genuine Land Rover KIT assures confidence

Land Rover would like to remind you that accessories that are non-genuine Land Rover are not warranted by Land Rover North America and may not be serviceable at other Land Rover Retailer Centers. If your Land Rover Center or sales guide offers you non-genuine Land Rover parts or accessories, we recommend finding out whether they have a warranty, where they can be serviced, and what company provides these warranties and service.

Please recycle this brochure after use.



DESIGNED FOR THE EXTRAORDINARY

1-800-FIND 4WD
USA – www.landroverusa.com
Canada – www.landrover.com/ca
Land Rover North America, Inc.
555 MacArthur Blvd.
Mahwah, NJ 07430

Land Rover Canada
8 Indell Lane
Bramalea, Ontario L6T 4H3

Printed in USA
© 2010 Land Rover
North America
© Land Rover Canada
LR3LR4KIT