

TireFocus

When to buy tires

Regularly inspecting your tires will help determine when they should be replaced. Here is a list of warning signs that your tires may need replacement. Speak to your Lexus Assistant Service Manager if any irregularities are noticed.

- Tire has any abnormal wear patterns which can affect the safe handling of the vehicle;
- Tire is cracked and is porous due to age or manufacturer defect;
- Tire bead or sidewall is damaged;
- Tire tread is damaged and the tire cord is exposed;
- Tire tread is punctured and cannot be patched from the inside;
- Tire belt is shifted and has created an “out-of-round” tire;
- Tire has abnormal bulge on its sidewall.

Tread

- Tire is worn to “wear indicator” or to minimum allowable limit as per tire manufacturer (1.6mm or 2/32” for all-season and 4mm or 5/32” for winter tires).
- Measure it – and inspect it. Advanced and unusual wear can reduce the ability of the tread to grip the road in adverse conditions. Visually check your tires for uneven wear, looking for high and low areas or unusually smooth areas. Also check for signs of damage.



When inspecting your tires, look for built-in “wear bars” – small, raised strips of smooth rubber which appear when the tire is worn out.

TireFocus

Tires

Why tires wear abnormally

Tread Condition	Both edges wear	Centre wear	Feather edge wear	One side edge wear	Toe and heel wear
Cause	Air pressure too low	Air pressure too high	Toe-in problem	Camber problem	Arbitrary wear normal

How to read the tire specification code

P 235/60 R 19 99 V
 ① ② ③ ④ ⑤ ⑥ ⑦

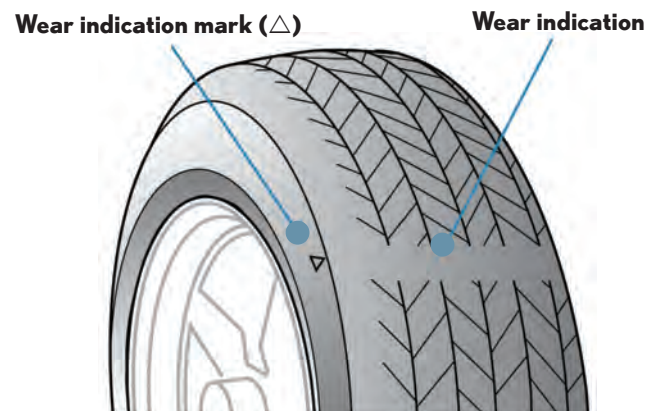
- ① Passenger car tire
- ② Tire width
- ③ Aspect ratio (height as % of width)
- ④ Radial construction
- ⑤ Rim diameter (in)
- ⑥ Load index
- ⑦ Speed rating

Factors affected by tire wear

- Drivability and stability
- Ride quality and smoothness
- Heat radiation transferability
- Performance in rain/snow

Tire wear indication

Vehicle type	Ordinary	Highway
Passenger vehicle	1.6 mm	1.6 mm
Small sized truck	1.6 mm	2.4 mm
Truck or Bus	1.6 mm	3.2 mm



TireFocus

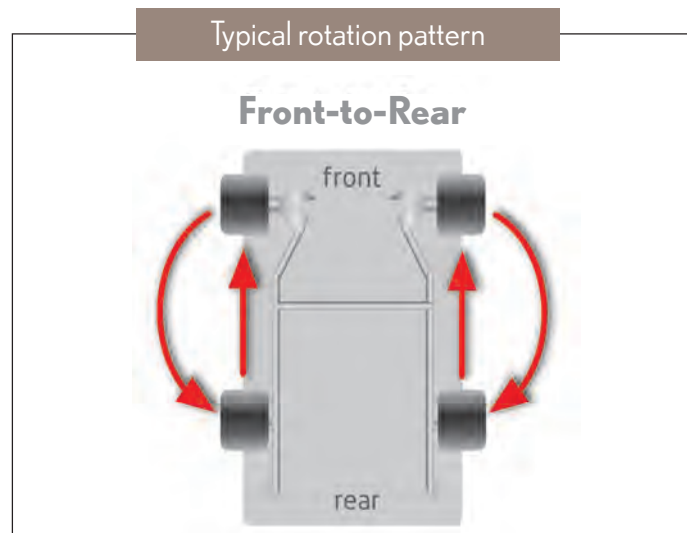
Increasing Tire Life

Alignment

Is your vehicle pulling to one side, or shaking? A bad jolt from hitting a curb or pothole can throw your front end out of alignment and damage your tires. Correct alignment allows for improved steering response and better handling performance. It also promotes even tire wear, which in turn means longer lasting tires. Proper alignment also reduces wear on the rest of the suspension. **Have your Lexus Dealer inspect periodically to ensure that your vehicle is properly aligned.**

Rotation

Regularly rotating your vehicle's tires will help you achieve more uniform wear and increases the useful life of the tire. Tires should be rotated as recommended by your Lexus Dealer. Depending on the condition and type of your vehicle, your Lexus Dealer may use an alternate rotation pattern.



TireFocus

DOT Markings and Tread Patterns

DOT markings

The U.S. Department of Transportation markings signify that the tire meets DOT tire-safety standards. The DOT markings help track the tire in the same way a lot number tracks a food product.



- The first two characters designate the tire manufacturer and plant code. This could be important if the tire receives a safety recall.
- Characters three and four denote the tire size.
- The fifth, sixth, seventh and eighth (optional) characters identify the brand as well as other characteristics important to the manufacturer.
- The final four numbers denote the date the tire was produced. The first two indicate the week, and the last numbers specify the year.

Understanding the tread pattern

The tread on a tire can tell you a lot about what kind of tire it is and how it is likely to perform in various conditions.

1 Sipes

- More sipes – higher wet traction
- Solid blocks – better tear resistance in gravel, etc.

2 Lateral grooves

- Open – improved mud, sand and snow traction
- Closed – quiet and higher cornering power on highway

3 Shoulder blocks

- Open – higher traction
- Closed – quiet and higher cornering on highway

4 Centre rib

- Solid – responsive highway handling
- No rib (lugs) – higher traction

5 Circumferential grooves

- Wide and clear – improved water dispersion at highway speeds
- Zigzag and lugs – improved off road and snow traction

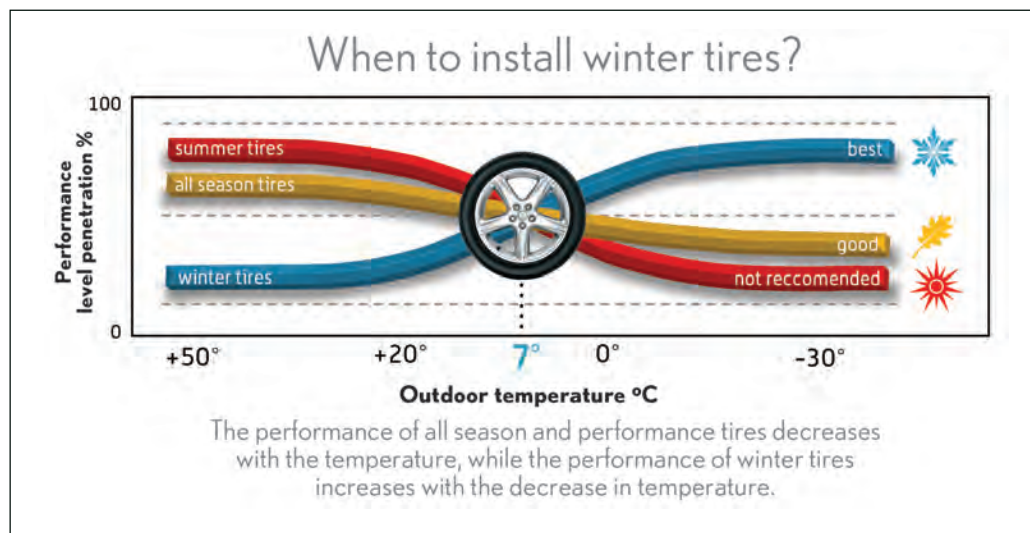


TireFocus

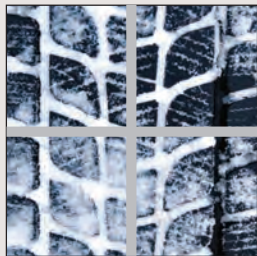
Winter Tires

Why use winter tires?

Much too often, winter tires are portrayed as “snow tires.” The truth is, winter tires are not only designed to perform in snowy conditions, but they are intended to provide optimal performance in cold weather temperatures as well. Therefore, even in the absence of snow on the road surface, your winter tires will continue to provide you with the performance and safety you expect, thanks to the soft compound mix capable of withstanding extreme temperatures.



Benefits of winter tires

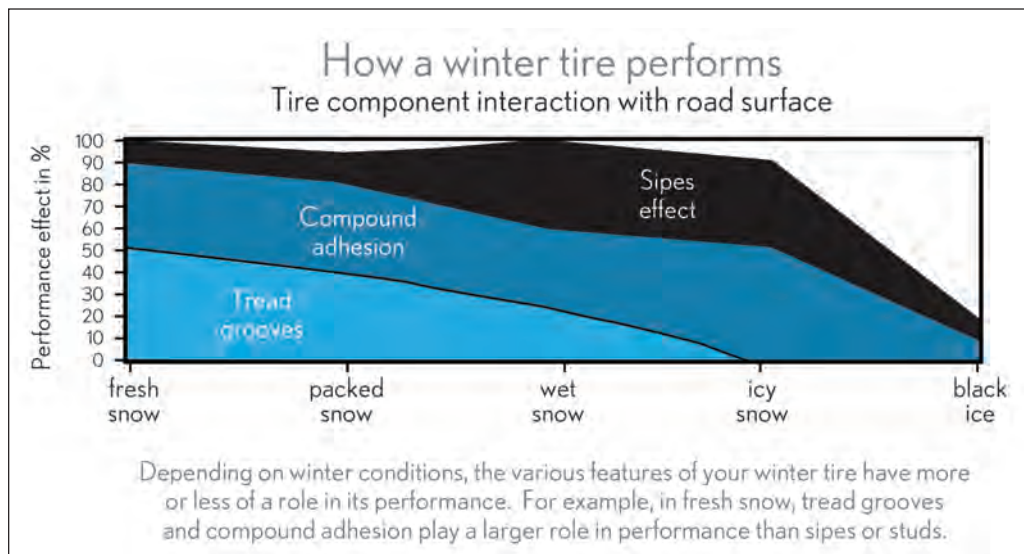


- Excellent ride comfort and safety
- Exceptional grip in cold conditions
- Superior braking capabilities on ice and snow
- Outstanding resistance against aquaplaning
- Superb wet and dry handling
- Enhanced vehicle stability control (VSC) operation
- Smoother take-off when equipped with traction control (TRAC)

TireFocus

Winter Tire Performance

Winter tires are particularly effective under difficult environmental conditions (snow, ice and mud) and at low temperatures, below +7°C (44.6°F). During the winter season, tires play a crucial role in the vehicles overall safety and performance. As temperatures drop, standard (non-winter) compound characteristics show decreased elasticity. This results in a reduced contact area and therefore overall grip. The need for greater mobility and improved safety in winter conditions has led to high demand for winter tires. To better understand the benefits of a winter tire, we must understand that its properties are geared towards “cold temperature” performance.



Did you know?

In the province of Quebec, since December 2008, the Highway Safety Code provides that:

“Between December 15 to March 15, the owner of a taxi or passenger vehicle registered in Quebec may not put the vehicle into operation unless it is equipped with tires specifically designed for winter driving, in compliance with the standards prescribed by government regulation. The prohibition also applies to any person renting out passenger vehicles not equipped with that type of tires. . .” It is important to remember that tires specifically designed for winter driving constitute a safe solution for driving in winter. They are designed to provide maximum grip on snow and ice covered surfaces, and cold temperatures.

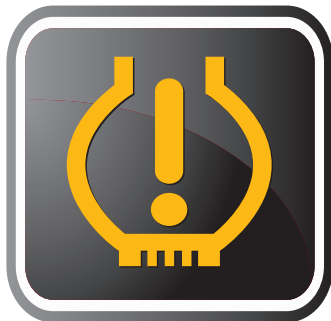
TireFocus

Tire Pressure Monitoring Systems

Your Lexus may be equipped with a technically-advanced Tire Pressure Monitoring System. This is for safety reasons. While this tool keeps you informed about your tire pressure, it is no substitute for regular tire maintenance. Lexus recommends regular, first-hand visual inspection of your tires, as well as bi-weekly tire pressure checks.

How the tire pressure monitoring system works

Most 2008 and newer model year vehicles may be equipped with the direct system which utilizes a sensor that accurately measures both tire pressure and tire air temperature. This sensor is fitted to the inner side of each wheel and transmits data via electronic waves to the receiver. Some 2007 and older model year vehicles are equipped with the indirect system which uses the Resonance Frequency Method & Relative Wheel Speed Difference Method to determine irregularities. If an inconsistency is detected in either of these systems, the warning light symbol illuminates on your dashboard.



Warning symbol for low tire pressure

If this symbol lights up, it is alerting you that one or more of your tires may be under-inflated.

If this warning light keeps blinking on and off (for 60 to 90 seconds), it is indicating a malfunction in the system. After blinking for this time, the warning light may remain on. If the light remains on, contact your Lexus Dealer immediately for a system inspection.

Does the warning light always indicate that tire pressure is low?

The warning light may indicate a system malfunction requiring a Lexus Dealer's attention. If it flashes before staying on continuously, the tire pressure could be within the appropriate range, but you should contact your Lexus Dealer for a system inspection.

If a tire consistently needs to be filled with air, have it checked by your Lexus Dealer. For vehicles equipped with the Tire Pressure Monitoring System, Lexus recommends the installation of a Tire Pressure Monitoring System (TPMS) on winter wheels.

TireFocus

Safety Storage Tips

Storage Tips

Your Lexus Dealer may have a tire storage service, which could make things much easier for you. No need to take tires home. Ask your Lexus Assistant Service Manager if this service is available at your Lexus Dealer.

Exposure to the elements and heat are the main factors that affect the speed at which a tire ages. Tires will age naturally, but by taking a few steps to properly care for your tires, you may be able to prolong their life.

Ultraviolet rays and heat are not good for the rubber in your tires. You should keep your off-season tires out of direct sunlight.

When storing your tires, place them flat in a dry, cool location that is not close to electrical motors or machines. They can give off ozone, which can damage your tires.



TireFocus

Tire Brands

For your convenience Lexus offers 13 of Canada's top brands.

