

2010 Jeep®

Grand Cherokee



machaikdcj.com



Capable style.

Sized right with a noble profile and well-appointed interior, the 2010 Jeep® Grand Cherokee is built to rule every road it travels. Grand Cherokee addresses all challenges with its world-class Jeep brand prowess that's paired with a very long list of standard and available premium features. Choose from three Grand Cherokee models: the big-value Laredo, the very well-appointed Limited or the stunningly powerful SRT8®. You can outfit Grand Cherokee with innovative features like the Media Center 730N touch-screen navigation radio or the Trail Rated® Quadra-Drive® II active four-wheel-drive system with its front and rear Electronic Limited-Slip Differentials, to name just a few. Head out with capable style, and go from there. This is how you enjoy living the Jeep life and everything it has to offer. This is Jeep Grand Cherokee.

machaikdcj.com

How a trademark becomes a benchmark.

Tackle a rock-laden mountaintop or cruise over city streets drenched with rain or snow with complete confidence. The 2010 Jeep® Grand Cherokee boasts the most powertrain options in its class.⁽¹⁾ You can finesse this legendary nameplate's authentic engineering to your specifications, making it into one of the fastest vehicles on the street, an efficient and powerful commuter, or a strong and dependable urban cowboy that's somewhere in-between.

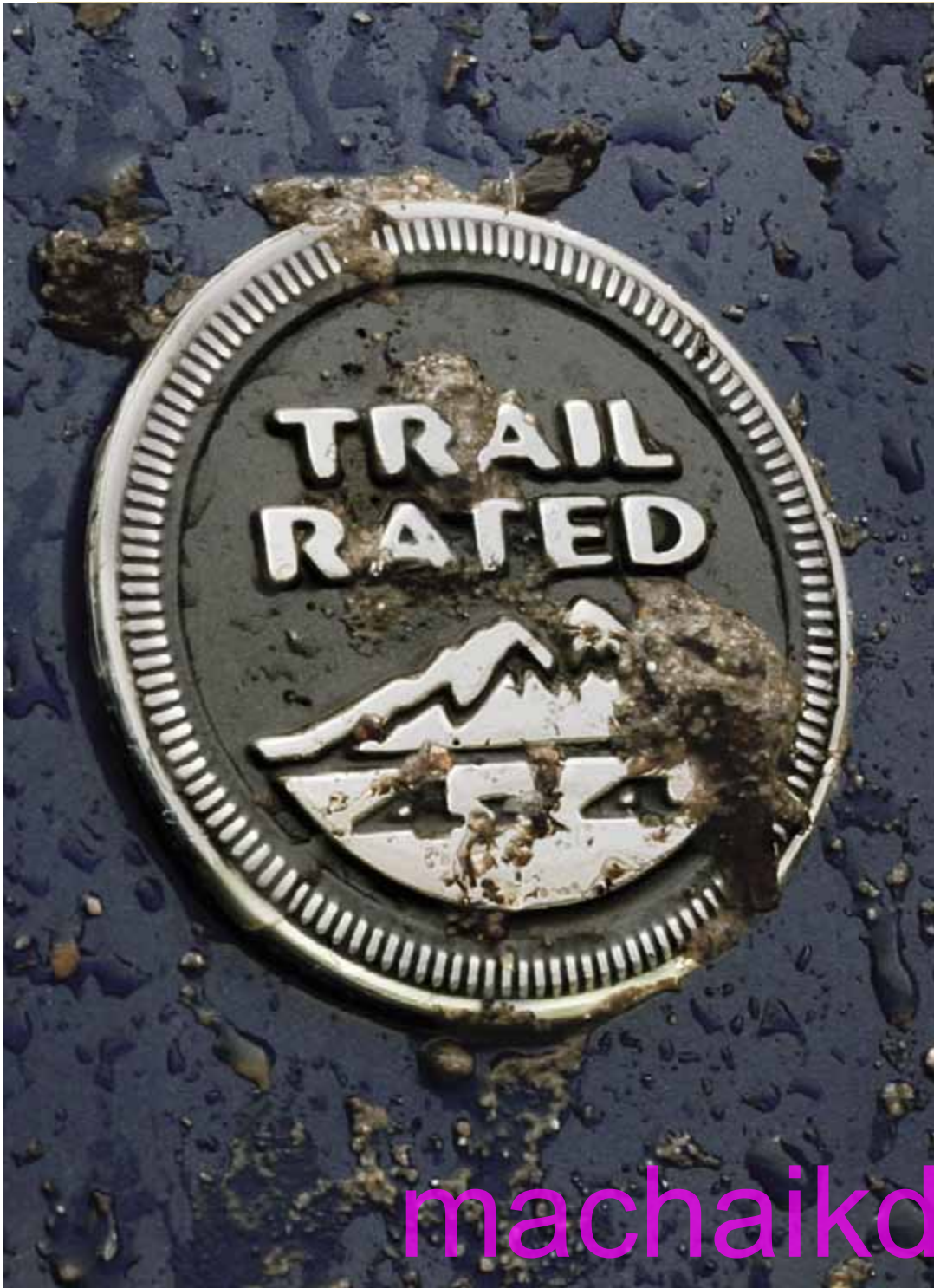
For 4WD brawn, Grand Cherokee offers three distinct options. Quadra-Drive® II delivers class-leading capability with its front and rear Electronic Limited-Slip Differentials (ELSD) that can help transfer 100 percent of torque to any one wheel with traction. Quadra-Trac II® offers all-speed traction control to help keep you on course. If wheel slippage is detected, up to 100 percent of the available torque can be routed to the axle with the most traction. Shift into low range for rock-crawling prowess. Quadra-Trac I® is a full-time system that operates smoothly, with no driver interaction required. Under normal driving conditions, torque is distributed with 48 percent to the front wheels and 52 percent to the rear wheels. If wheel slippage occurs, the integrated traction control system helps transfer torque to the axle with traction for secure 4WD capability.

Three available engines offer their own unique punch: the thrilling 420 horsepower 6.1L SRT® HEMI® V8, the powerful and efficient 5.7L HEMI V8 with its Multi-Displacement System (MDS) and Variable Valve Technology (VVT), and the efficiently quiet and strong 3.7L V6.

⁽¹⁾Based on 2009 *Ward's* Middle Sport/Utility segment. ⁽²⁾Do not attempt water fording unless depth is known to be less than 20 inches. Traversing water can cause damage that may not be covered by the new vehicle warranty. Always off-road responsibly in approved areas.



machaikdcj.com



JEEP TRAIL RATED® vehicles are designed to perform in a variety of off-road conditions. Five performance categories outline the superior capabilities that all Trail Rated vehicles share.



ARTICULATION

A Trail Rated suspension system is limber like a gymnast. How exactly? Flexibility is the key to good articulation. The more a wheel can travel, and suspension flex, the better it can maintain contact with terra firma and provide the traction needed to cross an array of obstacles.



TRACTION

The vehicle maintains forward momentum through the tires staying in contact with the road or trail. Trail Rated traction helps you stay in control on untamed terrain, slippery (wet, mud, snow) conditions, and on steep grades.



MANEUVERABILITY

Athletic. Agile. Trail Rated. Jeep 4WD vehicles have the footwork to help navigate narrow gaps, dodge emergency situations and avoid cosmetic damage to the underbody, thanks to precision steering and optimized wheelbases.



GROUND CLEARANCE

Help keep your belly out of the mud. Clear nasty logs, rocks, and uneven ground while helping to prevent undercarriage damage. Trail Rated vehicles feature optimized approach, departure, and breakover angles to keep you in the clear.



WATER FORDING⁽¹⁾

Hit that riverbed with confidence. A Trail Rated Jeep vehicle features additional electrical and body sealing, along with a high air intake location for optimum water fording capability.

Do not attempt water fording unless depth is known to be less than 20 inches. Traversing water can cause damage that may not be covered by the new vehicle warranty. Always off-road responsibly in approved areas.

machaikdcj.com



Smarts with **style to spare.**

machaikdcj.com



Jeep® Grand Cherokee Limited shown in Modern Blue Pearl

machaikdcj.com

Air of confidence.

★ ★ ★ ★ ★
FIVE - STAR

HIGHEST GOVERNMENT
FRONT & SIDE CRASH RATING

Jeep® Grand Cherokee has earned the U.S. government's highest rating — Five Stars — for front- and side-impact crash testing for driver, front passenger, and rear passengers,⁽¹⁾ as rated by the National Highway Traffic Safety Administration (NHTSA).

Grand Cherokee's robust Electronic Stability Control (ESC)⁽²⁾ includes Electronic Roll Mitigation (ERM), antilock brake system (ABS) and Brake Assist, all-speed traction control, and available Trailer Sway Control (TSC). By alternating brake pressure, TSC helps reduce trailer sway and improves handling in adverse towing conditions caused by crosswinds and traffic. When the network of ESC sensors detects that you're veering off your intended path, this system instantaneously takes action to help keep you moving forward.

Hill Start Assist (HSA) and Hill Descent Control (HDC) are available features that employ automatic braking to help get you up and down the mountain. Choose the available ParkView^{®(3)} Rear Back-Up Camera to assist in the detection of hidden obstacles during reverse maneuvers. High Intensity Discharge (HID) headlamps with auto-leveling are available to improve nighttime visibility by casting a beam of light three times brighter down the road. Standard side-curtain and advanced multistage front air bags⁽⁴⁾ work in tandem to provide protection. The available Rain-Sensing Automatic Wiper System goes into action the moment raindrops hit the windshield.



⁽¹⁾Star ratings are part of the U.S. Department of Transportation's SaferCar.gov program (safercar.gov) ⁽²⁾No system, no matter how sophisticated, can repeal the laws of physics or overcome careless driving actions. Performance is limited by available traction, which snow, ice and other conditions can affect. When the ESC warning lamp in the speedometer flashes, the driver needs to use less throttle and adapt speed and driving behavior to prevailing road conditions. Always drive carefully, consistent with conditions. Always wear your seat belt. ⁽³⁾Always check entire surroundings before backing up. ⁽⁴⁾The Advanced Front Air Bags in this vehicle are certified to the new Federal regulations for advanced air bags. Children 12 years old and younger should always ride buckled up in a rear seat. Infants in rear-facing child restraints should never ride in the front seat of a vehicle with a passenger front air bag. All occupants should always wear their lap and shoulder belts properly. Air bags shown deployed for illustrative purposes only.



Properly inflated tires aid fuel efficiency.

The Tire Pressure Monitoring Display System, standard on Limited, S-Limited, and SRT8[®], gets your attention by displaying the tire pressure at each individual wheel. This helps identify when additional air is needed to minimize rolling resistance and maximize fuel economy. In addition, and included on Laredo, a "LOW TIRE" message and audible alert notify you if any tire loses significant air pressure.

machalkdcj.com



Sky-high tech.



With Uconnect™, you're always connected — to people, places, music, movies, and the Internet.

Voice Command. Lets you select radio stations, satellite radio channels,⁽¹⁾ and navigation⁽¹⁾ destinations using voice commands. Works with all Uconnect Media Center radios. Included with Uconnect Phone.

Uconnect Phone. Lets you talk on your Bluetooth® compatible phone virtually hands-free. Address Sync⁽²⁾ lets you call anyone in your address book by saying their name.

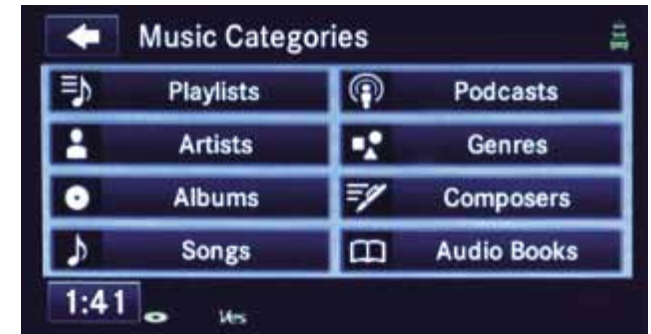
Audio Jack. Connect a 3.5-mm audio cable from your MP3 player, phone, or electronic book reader to play audio through your car's speakers.

Media Center 730N AM/FM/CD/DVD® Radio with 30GB Hard Drive and GPS Navigation. 6.5-inch touch screen, MP3/WMA support, USB input, 4,250 song capacity, SIRIUS® Satellite Radio,⁽⁴⁾ SIRIUS Traffic,⁽⁵⁾ and Voice Command.

iPod® Control. Connect most iPod-compatible devices to your car's stereo using the in-car cable; then control them with your radio or steering wheel controls. Keeps the devices charged too.

Uconnect Web.⁽⁶⁾ An in-car router that connects any Wi-Fi-enabled device to the Internet at 3G broadband speeds, allowing multiple passengers to surf the Web and social networks, look up directions, check eMail, or download music. Uconnect Web is an Authentic Jeep® Accessory by Mopar. Subscription required, sold separately.

⁽¹⁾When satellite radio and navigation features are equipped on your vehicle. Any voice-commanded system should be used only in safe driving conditions and all attention should be kept on the roadway ahead. Failure to do so may result in an accident causing serious injury or death. ⁽²⁾Phone must support Bluetooth Phone Book Access Profile (PBAP) ⁽³⁾In-dash DVD capability not available in all states. See your dealer for details. ⁽⁴⁾SIRIUS service available only in contiguous United States and D.C. Service available in Canada; see siriuscanada.ca. Subscription required after 12-month subscription included with vehicle purchase. Subscriptions governed by SIRIUS Terms & Conditions available at sirius.com. SIRIUS, XM, and all related marks and logos are trademarks of SIRIUS XM Radio Inc. and its subsidiaries. ⁽⁵⁾The Uconnect Web feature is not intended for use by the driver while the vehicle is in motion.



machaikdcj.com



Jeep® Grand Cherokee Limited Royale leather-trimmed interior shown in Dark Khaki/Light Graystone.

Comfort and **curves.**

The generously appointed cabin of the 2010 Jeep® Grand Cherokee sets you deep inside the comfort zone, whether you're going for the "King of the Thrill," the SRT8®; the plush Limited; the new and sporty S-Limited; or the value-plus Laredo. Grand Cherokee is sized right to handle all curves, with options that let you see and be seen sitting in the lap of adventurous luxury.

Grand Cherokee SRT8 is built for speed and its cabin follows suit with race-inspired front seating and a refined aluminum finish on the instrument panel, shifter bezel and floor console. The standard Boston Acoustics® premium audio system tunes you into the intricate orchestrations of your favorite songs.

If the combination of metallic finishes and leather appeals to your senses, then the new Grand Cherokee S-Limited will exceed your expectations. Packaged with a unique leather-trimmed interior, including 8-way driver and 4-way front passenger power-adjustable seats that are heated in both the front and second rows. A leather-wrapped steering wheel, shift knob and parking brake handle offer a firm grasp on the finer things in life.

Fresh air, sunlight and engineered audio come together in Laredo's optional Sun/Sound Group, with its power sunroof with convenient one-touch operation and touch-screen navigation radio. It all adds up to all-around fun in the sun.



Jeep Grand Cherokee SRT8.



Jeep Grand Cherokee Laredo.

machaikdeej.com

Properly secure all cargo.



Between a rock and a soft place.

Above: Jeep® Grand Cherokee Laredo Rocky Mountain Edition shown in Modern Blue Pearl.

Below: Jeep Grand Cherokee Limited shown in Bright Silver Metallic.



Stand at the front of the class.

Besides claiming class-leading 4WD capability,⁽¹⁾ Jeep Grand Cherokee boasts a 7,400-lb towing capacity⁽²⁾ and the race-inspired SRT8[®] takes off as the fastest SUV in its class.⁽³⁾ Hold on, 'cause SRT8 can launch you from 0-60 mph in under five seconds, on either wet or dry pavement. Looking every bit the aggressor, SRT8 features twin chrome four-inch exhaust tips over a genuine dual exhaust system with 2.75-in-diameter Dura-Bright[®] wheel treatment from Alcoa.[®] Performance-tuned suspension, Brembo[®] Performance brake calipers and 20-inch Goodyear[®] Run-Flat Tires on polished forged-aluminum wheels help you run smooth and stop quick.

The adventure-ready Grand Cherokee Laredo Rocky Mountain Edition⁽⁴⁾ comes ready to Go Anywhere, Do Anything,[™] with a value package that includes a Media Center 730N touch-screen navigation radio, Boston Acoustics[®] premium audio system, heated front seats, power sunroof, ParkView[®] Rear Back-Up Camera,⁽⁵⁾ exclusive “Rocky Mountain” badging, and more.

Grand Cherokee S-Limited bears a proud nameplate designating its exclusive status, plus standard High-Intensity Discharge (HID) headlamps, and 18-inch wheels add the right touch of dramatic appeal.

The Limited adds upscale to its appearance with abundant chrome: on the traditional Jeep brand seven-slot grille, window moldings, door handles, roof rack side rails, and license plate brow thus proving that looks can thrill every time you take the road.

⁽¹⁾Based on *Ward's* 2009 Middle Sport/Utility segment. ⁽²⁾When properly equipped. ⁽³⁾Based on *Ward's* Middle Sport/Utility segment 0-60 mph performance. ⁽⁴⁾Late availability. ⁽⁵⁾Always check entire surroundings before backing up.

machhaikdcj.com



machaikdcj.com

Jeep® Grand Cherokee SRT8® shown in Inferno Red Crystal Pearl.



Laredo

- 3.7L V6 Engine
- 5-Speed Automatic Transmission
- Quadra-Trac I[®] Full-Time 4WD (4x4 models)
- Chrome Bodyside Molding
- Roof Rack Side Rails
- Advanced Multistage Driver and Front-Passenger Air Bags⁽¹⁾
- Advanced Side-Curtain Air Bags
- Antilock Brake System (ABS)
- Electronic Stability Control (ESC)⁽²⁾
- Brake Assist
- All-Speed Traction Control
- Electronic Roll Mitigation
- Media Center 130 AM/FM Stereo Radio and CD Player
- SIRIUS[®] Satellite Radio with One-Year Subscription Included
- Manual Air Conditioning with Rear Seat Outlets
- Low Tire Pressure Warning Lamp
- Vinyl-Wrapped Steering Wheel with Audio and Speed Controls
- Reversible/Waterproof Rear Cargo Storage
- Full-Size Spare Wheel and Tires
- Rear 60/40 Folding Seat

Select Standard Features

See Specification Chart for Additional Standard and Available Options and Packages



Limited

- SmartBeam[™] Intelligent Headlamp System
- Rain-Sensing Automatic Wiper System
- Auto-Dimming Interior and Exterior Rearview Mirrors
- ParkSense[®] Rear Park Assist System
- ParkView[®] Rear Back-Up Camera
- Boston Acoustics[®] Premium Audio System
- Media Center 730N Touch-Screen Navigation Radio
- 8-way Driver and 4-way Front-Passenger Power Seat Adjustment
- Jeep[®] Memory System
- Chrome Grille, Door Handles, Roof Rails and License Plate Brow
- Leather-Wrapped Steering Wheel with Audio and Speed Controls
- Woodgrain Interior Accents
- Remote Start System
- Leather-Trimmed, Heated Front and Rear Seats
- Uconnect[™] Phone
- Infrared Dual-Zone Automatic Temperature Control
- Tire Pressure Monitoring Display System
- Power Sunroof
- Power Adjustable Pedals with Memory
- 115-Volt Auxiliary Power Outlet
- Fog Lamps
- SIRIUS Traffic[™] with One-Year Subscription Included



SRT8[®]

- 6.1L SRT[®] HEMI[®] V8 Engine
- SRT 5-Speed Automatic Transmission with Electronic Range Select
- SRT 4WD Active Full-Time Transfer Case
- SRT8 Exterior Appearance Package including body-color grille with crosshatch inserts, aero front and rear fascias and unique side rails
- Performance Instrument Cluster Display with Acceleration, Braking and G-Force Information
- Electronic Stability Control (ESC) with Electronic Roll Mitigation (ERM)
- Performance-Tuned Suspension and Steering
- Tire Pressure Monitoring Display System
- Boston Acoustics[®] Premium Audio System
- Media Center 430 Touch-Screen Radio with 6,700 song capacity
- Auto-Dimming Rearview Mirrors
- 20-Inch Goodyear[®] Run-Flat Tires
- Royale Leather-trimmed seats with suede diamond-embossed microfiber inserts and "SRT" embroidered logos on front seats
- Carbon weave treatment on shift knob, steering wheel, floor console, center stack and door trim bezels in the interior
- SRT Track Experience – Complimentary Driving School

maohaikej.com



17-inch
Sextant Cast Aluminum
painted Sparkle Silver
— Standard on Laredo



17-inch
Everest Cast Aluminum
with Machined Face
— Standard on Limited



18-inch
Summit Chrome-Clad
Cast Aluminum
— Available on Limited



20-inch
Forged-Aluminum with
Dura-Bright® Treatment
— Standard on SRT8®



17-inch
Black Face, Machined
Pocket Cast Aluminum
— Authentic Jeep Accessory
by Mopar



17-inch
Black Pocket Cast Aluminum
— Authentic Jeep Accessory by Mopar



18-inch
7-Spoke Chrome
Cast Aluminum
— Authentic Jeep Accessory by Mopar

[®]The Advanced Front Air Bags in this vehicle are certified to the new Federal regulations for advanced air bags. Children 12 years old and younger should always ride buckled up in a rear seat. Infants in rear-facing child restraints should never ride in the front seat of a vehicle with a passenger front air bag. All occupants should always wear their lap and shoulder belts properly. [®]No system, no matter how sophisticated, can repeal the laws of physics or overcome careless driving actions. Performance is limited by available traction, which snow, ice and other conditions can affect. When the ESC warning lamp in the speedometer flashes, the driver needs to use less throttle and adapt speed and driving behavior to prevailing road conditions. Always drive carefully, consistent with conditions. Always wear your seat belt.



3.7L V6 Engine

An economical, durable, and strong performer.



5.7L HEMI® V8 Engine with MDS and VVT

Pass and merge with ease, powering 357 hp and 389 lb-ft of torque. MDS aids efficiency at high-way speeds and VVT is always active.



6.1L SRT HEMI V8 Engine

Command a thrilling 420 hp with 420 lb-ft of torque.

maohaike.com

Brilliant Black Crystal Pearl



Modern Blue Pearl



Light Graystone Pearl
1



Stone White
1



Inferno Red Crystal Pearl



Bright Silver Metallic



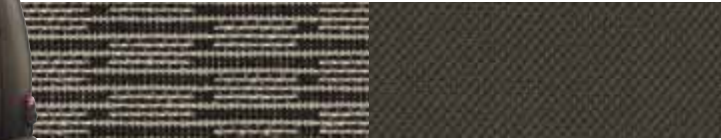
machaikdcj.com

¹Not available on SRT8[®] and S-Limited.

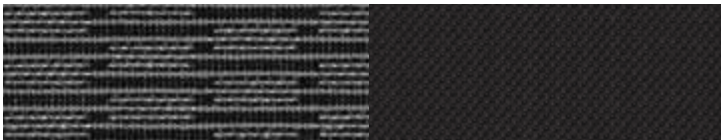


Laredo

Longitude Cloth/Wallace II Cloth — Standard



Medium Khaki/Dark Khaki

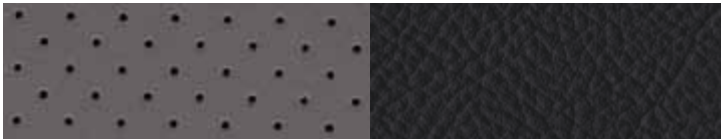


Medium Slate Gray/ Dark Slate Gray

Axis Perforated Leather Inserts/ McKinley Leather Trim — Available



Medium Khaki/Dark Khaki



Medium Slate Gray/Dark Slate Gray

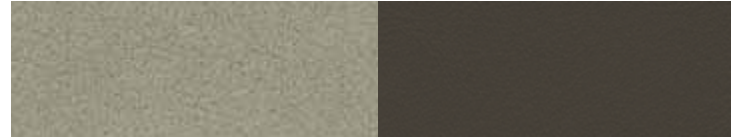


Limited

Suede Microfiber Inserts/Royale Leather Trim — Standard



Light Graystone/Dark Slate Gray

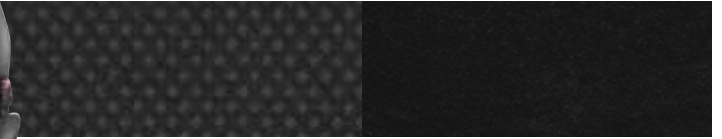


Light Graystone/Dark Khaki



SRT8[®]

Diamond Embossed Suede Microfiber Inserts/
Royale Leather Trim — Standard



Dark Slate Gray

POWERTRAIN

Engine	3.7L V6	5.7L HEMI® V8	6.1L SRT® HEMI V8
Displacement (cu in)	226	345	370
Horsepower (DIN @ rpm)	210 @ 5,200	357 @ 5,200	420 @ 6,200
Torque (SAE net lb-ft @ rpm)	235 @ 4,000	389 @ 4,350	420 @ 4,800
Axle Ratio	3.07:1	3.73:1	3.73:1
Fuel System	Sequential multipoint electronic fuel injection		

Variable Valve Timing A technology utilized in Formula One race cars, is now featured in the 5.7L HEMI V8. VVT offers increased engine breathing throughout the RPM range by varying the degree that the valves open and close in conjunction with the piston position. Results are tangible: better performance, more efficient operation and increased torque for towing and hauling.

Multi-Displacement System (MDS) Deactivates 4 cylinders (1, 4, 6, and 7) during steady speed between 40-60 mph, low-acceleration and shallow-grade climbing conditions. Fuel economy is improved up to 6 percent, depending on driving habits¹⁾ (5.7L HEMI V8)

Transmission 5-speed automatic with Electronic Range Select, Tow/Haul feature, adaptive electronic control, Brake-Park Interlock and electronically modulated torque converter (3.7L, 6.1L); Multispeed automatic with 5 forward speeds, alternate second gear, Electronic Range Select, Tow/Haul feature, Brake-Park Interlock and electronically modulated torque converter (5.7L)

FOUR-WHEEL-DRIVE SYSTEM (transfer case)

Quadra-Trac I® NV140SM Full-time; single-speed with 48/52 front/rear torque split and open front, center, and rear differentials (3.7L)

Quadra-Trac II® NV245 Active full-time; 2-speed with low range (2.72:1) and neutral, variable with 48/52 front/rear default torque split, electronically controlled clutch pack coupling in center differential and open front/rear differentials (5.7L)

Quadra-Drive® II NV245 Active full-time; 2-speed with low range (2.72:1) and neutral, variable with 48/52 front/rear default torque split, electronically controlled clutch pack coupling in center differential and front and rear Electronic Limited-Slip Differentials (5.7L)

SRT NV146 Active full-time; single-speed with variable torque split, electronically controlled clutch pack in center differential and open front and rear differentials (6.1L)

CAPACITIES/WEIGHTS TOWING (pounds unless otherwise specified)

Base Curb Weight 2WD/4WD	4,316/4,488
Payload Capacity (all occupants and cargo)	1,050
Maximum Gross Vehicle Weight Rating	
3.7L V6, 2WD/4WD	5,700/5,900
5.7L HEMI V8, 2WD/4WD	6,010/6,150
6.1L SRT HEMI V8, 4WD	6,150
Maximum Towing Capacity (when properly equipped)	
3.7L V6, 2WD/4WD	3,500/3,500
5.7L HEMI V8, 2WD/4WD	7,400/7,200
6.1L SRT HEMI V8, 4WD	3,500
Tongue Load Limit (3.7L, 6.1L, 5.7L)	525/750

RESTRICTION: Trailer frontal area limitation of 64 sq ft; maximum trailer length of 25 ft (Class II) or 30 ft (Class IV); Trailer Sway Control and low-profile mirrors are recommended. This chart is meant to serve as a quick and easy reference guide on how to properly equip your Jeep® Grand Cherokee for towing. For specific details, discuss your plans with your Jeep dealer, who will help you select the right equipment to meet your specifications.

Jeep, Grand Cherokee, HEMI, Mopar, ParkSense, ParkView, Quadra-Trac I, Quadra-Trac II, Quadra-Drive, Rocky Mountain Edition, Sentry Key, SRT, SRT8, Trail Rated, VES, and the Jeep grille are registered trademarks and Uconnect and Go Anywhere, Do Anything are trademarks of Chrysler Group LLC. Bluetooth is a registered trademark of Bluetooth SIG. Boston Acoustics is a registered trademark of Boston Acoustics, Inc. Brembo is a registered trademark of Freni Brembo SpA. Dura-Bright is a registered trademark of Alcoa Inc. HomeLink is a registered trademark owned by Johnson Controls, Inc. iPod® and iPod designs are registered trademarks of Apple Inc. SIRIUS U.S. Service available only in contiguous United States and D.C. Service available in Canada; see siriuscanada.ca. Subscription required after 12-month subscription included with vehicle purchase. Subscriptions governed by SIRIUS Terms & Conditions available at sirius.com. SIRIUS, XM, and all related marks and logos are trademarks of SIRIUS XM Radio Inc. and its subsidiaries. SmartBeam is a trademark of Gentex Corporation.

BODY/SUSPENSION/CHASSIS

Body Design UniFrame construction: All-steel body sheet metal and frame structural members welded and bonded into a single unit

Suspension

Front: Short/long arm (SLA) independent design with coil springs, gas-charged, twin-tube coil-over shock absorbers, upper and lower control arms ("A" arms) and stabilizer bar

Rear: Solid (live) axle, 5-link with tubular track bar, twin-tube coil-over shock absorbers and stabilizer bar

Steering Rack-and-pinion, power-assisted

Overall Ratio (center, full-lock) 15.8:1, 13.9:1
SRT8® (center, full-lock) 16.5:1, 14.6:1

Turns (lock-to-lock) 2.85

Turning Diameter (ft), curb-to-curb 36.7
SRT8® 37.1

Brake System

Front: Power-assisted disc brakes; 12.9" rotor diameter (SRT8 14.2)

Rear: Power-assisted disc brakes; 12.6" rotor diameter (SRT8 13.8)

Electronic Stability Program 4-channel, 4-wheel antilock with active wheel-speed, vehicle-speed, steering wheel-angle, yaw-rate, and lateral-acceleration sensors, vehicle stability management with two-stage activation switch, all-speed traction control, Brake Assist, Electronic Roll Mitigation (ERM) and Electronic Brake Distribution (EBD)

INTERIOR DIMENSIONS (inches unless otherwise specified)

Seating Capacity	5 Adults
Head Room , front/rear	39.3/39.2
Leg Room , front/rear	41.7/35.5
Shoulder Room , front/rear	59.1/58.4
Hip Room , front/rear	57.1/55.7
Cargo Volume (cu ft), rear seat up/folded	34.5/68.5

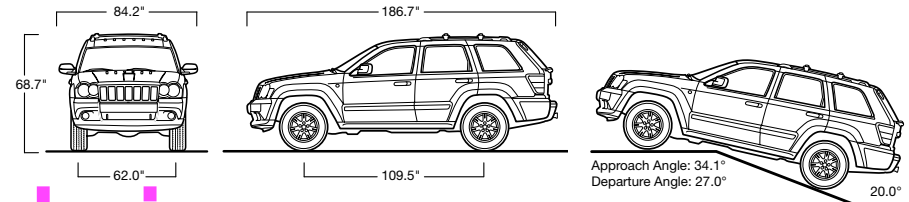
EXTERIOR DIMENSIONSSM (inches unless otherwise specified)

Wheelbase	109.5
Overall Length	186.7
Overall Width (at mirrors/at body)	84.2/72.6
Track front/rear	62.0/62.0
Height (overall with roof rails)	68.7
Running Ground Clearance (at base curb weight)	8.3
Approach Angle/Departure Angle	34.1°/27.0°
Breakover Angle	20.0°

¹⁾13 city/19 hwy mpg EPA fuel economy ratings (4x4 model). Fuel savings vary depending on driving habits and conditions.

²⁾Quadra-Trac I is not appropriate for conditions or situations where low range is required — such as severe off-road driving.

³⁾Dimensions of SRT8®: overall length 195.1; track, front/rear 63.3/62; height 67.4.



NOTE: Grand Cherokee Limited 4x4 specifications shown.
Dimensions of SRT8®: overall length 195.1; track, front/rear 63.3/62.1; height 67.4.

machaikdcj.com



CAPABILITY

	LAREDO			LIMITED	SRT®
	E	W	X	H	L
Engine — 3.7L V6	•	•	•	•	
— 5.7L HEMI® V8 with VVT and MDS (included with S-Limited Group)				O	O/P
— 6.1L SRT® HEMI V8					•
Four-Wheel-Drive System — Quadra-Trac I® full-time single-speed 4WD includes NV140 transfer case (requires 3.7L V6)	•	•	•	•	
— Quadra-Trac II® active 4WD includes NV245 transfer case, Hill Descent Control, Hill Start Assist, "Trail Rated" badge (with 17-inch wheels only) (included with 5.7L V8 engine)				P	P
— Quadra-Drive® II 4WD Group includes active 4WD with NV245 transfer case and electronic limited-slip differentials for front and rear axles, Hill Descent Control, Hill Start Assist, "Trail Rated" badge (with 17-inch wheels only), interior "Quadra-Drive II" badge and Skid Plate Group (included with S-Limited Group)				O	O/P
— SRT Four-Wheel Drive includes electronic active NV146 transfer case					•
Trailer Towing — Trailer Tow Group, Class II includes frame-mounted receiver hitch, wiring harness, 4-pin adapter and Trailer Sway Control (requires 3.7L V6 engine). Additional Jeep Towing Accessories may be required.	O	O	O	O	
— Trailer Tow Group, Class IV includes frame-mounted receiver hitch, wiring harness, 7- to 4-pin adapter and Trailer Sway Control (requires 5.7L V8 engine) (included with S-Limited Group)				O	O/P

EXTERIOR

Lighting — Automatic headlamps (ON/OFF) includes headlamps-on-with-wipers			•	•	•
— High Intensity Discharge (HID) headlamps includes automatic headlamp leveling system (included with S-Limited Group and SRT Option Group 2)				P	P
— SmartBeam™ intelligent high-beam headlamp control system (included with SRT Option Group 1)				•	P
— Round fog lamps integral with front fascia, water-resistant	O	•	•	•	•
Wiper System — Front, rain-sensitive automatic feature (included with SRT Option Group 1)				•	P
Sunroof — Power with express-open/close and comfort-stop features (included with Sun/Sound Group)	P	P	•	•	O

INTERIOR

Air Conditioning — Manual temperature control with rear seat outlets	•	•	•		•
— Infrared Dual-Zone Automatic Temperature Control with solar sensors and rear seat outlets (included with SRT Option Group 1)				•	P
Jeep Memory System — Radio station presets, last station settings, driver's seat position, exterior mirrors, and accelerator and brake pedal settings for two drivers, actuated from driver's door panel or each unique key fob (included with SRT Option Group 1)				•	P
Mirror — Auto-dimming rearview			•	•	•
Pedals — Power adjustable (included with Popular Equipment Group and SRT Option Group 1)	P	P	•	•	P
Power Outlets — 12-Volt, (2 front/1 rear) (rear included with Popular Equipment Group and Sun/Sound Group)	P	•	•	•	•
— 115-Volt power inverter, (included with SRT Option Group 1)	P	P	•	•	P
Seats — Heated front seats (included with Popular Equipment Group and SRT Option Group 1)	P	•	•	•	P
— Heated second row seats (included with SRT Option Group 2, must have SRT Option Group 1)				•	P
— Eight-way power driver and manual front-passenger seat adjustment	•	•			
— Eight-way driver and four-way front-passenger power seat adjustment			•	•	•

SAFETY AND SECURITY

ParkSense® Rear Park Assist System — Sensors in rear bumper detect obstacles (included with ParkView Rear Backup Camera and SRT Option Group 1)	O/P	•	•	•	P
ParkView® Rear Backup Camera — Rear-mounted camera with 6.5-inch display, activated when vehicle is shifted into reverse, includes ParkSense Rear Park Assist System (included with Sun/Sound Group, SRT Option Group 2, Navigation/Rear Backup Camera Group and SRT High-Performance Audio & Navigation Group)	P	•	•	•	P
Low Tire Pressure Warning Lamp — Alerts driver to low air pressure	•	•	•	•	•
Tire Pressure Monitoring System — Displays tire pressure for each wheel	•	•	•	•	•

LAREDO			LIMITED	SRT®
E	W	X	H	L

LAREDO			LIMITED	SRT®
E	W	X	H	L

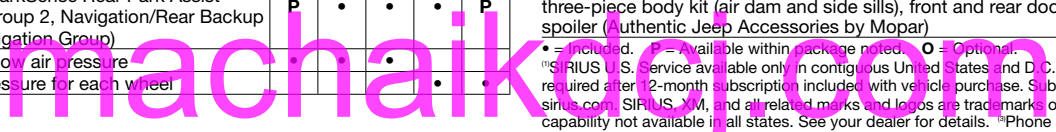
UCONNECT™ MULTIMEDIA

Media Center Radios — Media Center 130 AM/FM/CD radio with MP3/WMA support, SIRIUS® Satellite Radio™ and audio jack	•				
— Media Center 430 AM/FM/CD/DVD® radio with MP3/WMA support, 30GB hard drive with 6,700 song capacity, 6.5-inch touch-screen, SIRIUS Satellite Radio,™ audio jack and Voice Command				•	•
— Media Center 730N AM/FM/CD/DVD® radio with MP3/WMA support, 30GB hard drive with 4,250 song capacity, 6.5-inch touch-screen, SIRIUS Satellite Radio,™ audio jack, iPod® control, Voice Command, GPS navigation, SIRIUS Traffic™ and Uconnect Phone (included with Sun/Sound Group, Navigation/Rear Back-Up Camera Group and SRT High-Performance Audio and Nav Group)	P	•	O	•	P
Audio Systems — Six speakers	•				
— Boston Acoustics® Premium Audio system including six speakers and 276-watt amplifier (included with Sun/Sound Group)	P	•	•	•	•
SIRIUS Satellite Radio — Includes 1-year subscription	•	•	•	•	•
Uconnect Phone — Hands-free calling with Address Sync,® Bluetooth® and Voice Command (included with Media Center 730N and SRT® Option Group 1)	P	•	P	•	P
Uconnect Web — Internet connection and Wi-Fi Hotspot. Dealer-installed Authentic Jeep Accessory by Mopar. Subscription required, sold separately	O	O	O	O	O

PACKAGES

Chrome Edition Group — Includes chrome fuel filler door, bright door entry guards, chrome taillamp guards, chrome tubular side steps (not available with Touring Plus Group or S-Limited Group) (Authentic Jeep Accessories by Mopar)	O	O	O	O	
Navigation/Rear Backup Camera — Includes ParkView® Rear Backup Camera and Media Center 730N touch-screen navigation radio (requires SRT Option Group 1)					O
Popular Equipment Group — Includes remote start system, 115-volt power inverter, power adjustable pedals and 12-volt auxiliary rear power outlet, heated front seats and Boston Acoustics® Premium Audio System	O	O	•		
Rocky Mountain Edition Group — Includes Sun/Sound Group, 12-volt rear power outlet, heated front seats, fog lamps, "Rocky Mountain" badge, 17-in sextant cast aluminum wheels with Mineral Gray painted pockets and P245/65R17 BSW all-terrain tires (late availability)		•			
Skid Plate Group — Includes fuel tank, transfer case and front suspension skid plates and tow hooks (2 front/1 rear) (included with Quadra-Drive II 4WD Group and S-Limited Group) (4WD models only)				P	P
S-Limited Group — Includes Quadra-Drive II 4WD Group, leather-trimmed seats with suede inserts, Skid Plate Group, Trailer Tow Group IV, door sill scuff pads, bright interior accents, body-color sill extensions, "S Edition" badge, HID headlamps, body-color fascias with bright insert, Uconnect Phone, full-size matching spare wheel, P245/60R18 BSW all-terrain tires, 18-inch Arrowhead cast aluminum with machined face wheels (requires Dark Slate Gray/Light Graystone interior) (4WD models only) (requires 5.7L V8 engine)					O
SRT® High-Performance Audio & Nav Group — Includes 11 KICKER® speakers, Media Center 730N GPS navigation radio and ParkView® Rear Backup Camera (requires SRT Option Group 1)					O
SRT Option Group 1 — Includes instrument cluster with performance display, deluxe door trim panels, Jeep Memory System, Dual-Zone Automatic Temperature Control, remote start system, 115-volt power inverter, rain-sensing wipers, heated front seats, eight-way power driver seat and four-way power passenger seat, SmartBeam™ headlamps, Uconnect Phone, power adjustable pedals, ParkSense® Rear Park Assist System (requires power sunroof)					O
SRT Option Group 2 — Includes heated rear seats, HID headlamps and ParkView® Rear Backup Camera (requires SRT Option Group 1)					O
Sun/Sound Group — Includes power sunroof, Boston Acoustics® premium audio system, Media Center 730N GPS navigation radio and ParkView® Rear Backup Camera	O	•			
Touring Plus Group — Includes premium floor mats with "Jeep" logo, chrome grille, three-piece body kit (air dam and side sills), front and rear door entry guards and rear spoiler (Authentic Jeep Accessories by Mopar)	O				

• = Included, P = Available within package noted, O = Optional.
 ®SIRIUS U.S. Service available only in contiguous United States and D.C. Service available in Canada; see siriuscanada.ca. Subscription required after 12-month subscription included with vehicle purchase. Subscriptions governed by SIRIUS Terms & Conditions available at sirius.com. SIRIUS, XM, and all related marks and logos are trademarks of SIRIUS XM Radio Inc. and its subsidiaries. *In-dash DVD capability not available in all states. See your dealer for details. ™Phone must support Bluetooth Phone Book Access Profile (PBAP).



Jeep



Jeep, Jamboree USA offers off-road adventure weekends that bring together the outdoors, down-to-earth people and their Jeep 4WD vehicles. We invite you to explore

America's remote backcountry, where great friendships and memories are made.

jeep.com/jamboree



J E E P G E A R

Gifts and Gear for the Jeep Enthusiast

Explore an extensive line of gifts and gear for the Jeep enthusiast. From authentic wearables and sports equipment to electronics, all items are as rugged and durable as your Jeep vehicle. jeep.com/gear

 Find us on **Facebook**

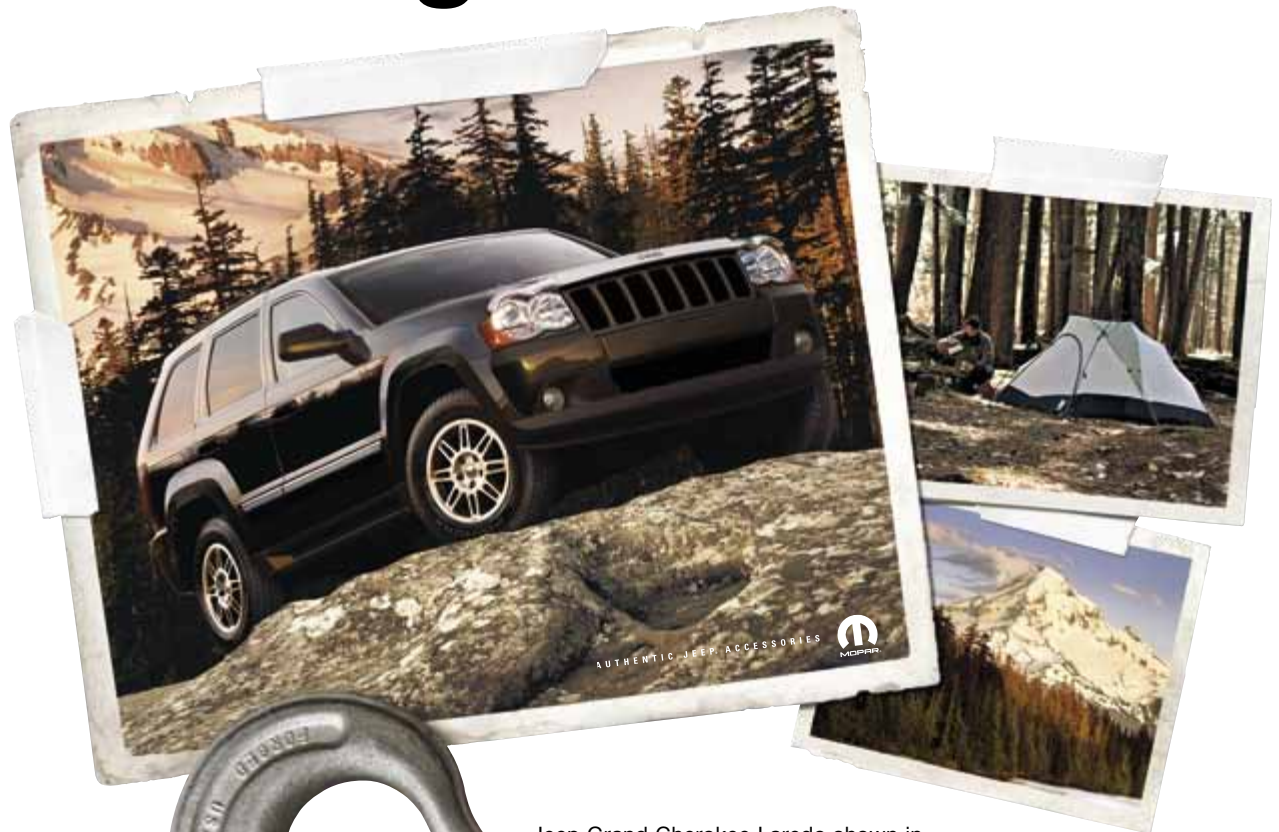


Jeep owners have been waving at each other on the road from the start. Now they're sharing the love in the wider world of the Internet. From the Jeep Experience site to our Jeep Facebook™ Page, you can join fellow Jeep enthusiasts by posting comments, participating in

discussions or sharing your Jeep photos and videos. Become a member of the club. The community is gathering online.

Go to jeep.com/experience.

The difference between talking and **doing...**



Jeep Grand Cherokee Laredo shown in Brilliant Black Crystal Pearl with Chrome Front Air Deflector, 17-inch Cast Aluminum Wheels and Molded Running Boards. Authentic Jeep Accessories by Mopar.

machaikdcj.com

Friendly Dealerships offer knowledgeable staff who are professionally trained to guide you with expert advice.

Visit jeep.com for all the latest information you'll need to be properly equipped for an educated buying decision.

Call **(800) 925-JEEP** to speak with one of our Jeep brand customer service representatives for the right answers to your important questions.

5-Year/100,000-Mile Powertrain Warranty

Transferable. See dealer for a copy of limited warranty. Includes towing to an authorized dealer.

Warranty Jeep vehicles are covered by a Chrysler Group LLC 3-year or 36,000-mile Basic Limited Warranty. See your dealer for a copy of this limited warranty. Excludes normal maintenance and wear items.

Jeep Auto Insurance⁽¹⁾ The only insurance guaranteed to repair your vehicle using Authentic Jeep Collision Repair Parts by Mopar for as long as you own your vehicle — at rates that are tough to beat. Plus, get up to \$100⁽²⁾ in deductible waived when repairs are done at a Jeep dealership. For a quote, visit cf.com/insurance or call (877) 244-1531.

Chrysler Service Contracts Chrysler has a vested interest in your satisfaction with your new Jeep vehicle. Chrysler Service Contracts offer extended service plans to help ensure that you'll enjoy your vehicle for many years down the road ... for just pennies a day. For more information, see your Jeep dealer, call (800) 442-2666 or visit jeep.com/csc.

Authentic Jeep Accessories By Mopar are designed specifically for your Jeep vehicle for exceptional fit, finish, and performance. Visit your dealership or mopar.com.

UconnectTM With Uconnect, you're always connected — to people, places, music, movies, and the Internet.

SIRIUS® Satellite Radio delivers over 130 channels, including 100% commercial-free music, sports, news, talk, entertainment, traffic and weather. Factory-installed SIRIUS Satellite Radio includes a one-year subscription. For more information, go to sirius.com.

Trail Rated[®] An authentic Jeep brand Trail Rated badge is a visual reminder of the capabilities built in — the symbol of a genuine, tried-and-true Jeep 4x4. Accept no substitutes.

Tread Lightly![®] As a founding member and official partner, we urge all Jeep owners to follow Tread Lightly! Guidelines. Visit treadlightly.org or call (800) 966-9900 to learn more.

Honoring Those Who Serve Chrysler Group LLC proudly supports the members of the U.S. Armed Forces and their families.

⁽¹⁾Insurance provided through 21st Century Insurance and Financial Services, Wilmington, DE, managing general agent for the personal lines insurers of American International Companies.

⁽²⁾Coverage features and availability may vary by state.

All product illustrations, specifications and competitive comparisons are based upon current information at the time of publication approval. Although descriptions are believed correct, complete accuracy cannot be guaranteed. Chrysler Group LLC reserves the right to make changes at any time, without notice or obligation, in prices, specifications, equipment, colors and materials, and to change or discontinue models. Some of the equipment shown or described throughout this catalog is available at extra cost. Available in U.S. markets only. See your dealer for the latest information.

5 YEAR/100,000 MILE
POWERTRAIN WARRANTY



machaikdcj.com **Jeep**

(800) 925-JEEP jeep.com

Jeep is a registered trademark of Chrysler Group LLC.