



**TOYOTA**

2021 Highlander

2021 HIGHLANDER

# Everything starts with you.

When you're the one who holds everyone and everything together, rest assured that the 2021 Toyota Highlander is ready to take on whatever you've got. Whether you choose the powerful gas variant or fuel-efficient hybrid, its refined styling, comfort and safety features will help take your drives to the next level.



Left to right: Platinum Hybrid AWD shown in Ruby Flare Pearl;<sup>1</sup> Platinum AWD shown in Moon Dust.<sup>1</sup> Below left: Limited 20-in. wheel. Below right: Platinum interior shown in Harvest Beige leather trim.



See numbered footnotes in Disclosures section.



XSE AWD shown in Magnetic Gray Metallic. Above center: Platinum AWD shown in Moon Dust.<sup>1</sup>

See footnote 2 in Disclosures section for more information on towing.

**PERFORMANCE**

# Push the limits of every day.

Whether you're hustling around town or venturing out to see what nature has to offer, find your confidence growing every time you're behind the wheel of Highlander. Thanks to a combination of a strong V6 engine and versatile capabilities, Highlander makes getting there part of the adventure.

### XSE sport-tuned suspension

Unique to Highlander XSE, sport-tuned shock absorbers, higher-rate springs and its stiffer rear stabilizer bar give you better road handling, while its lower, athletic stance shows it's ready to hit the ground running.

### Multi-Terrain Select

For Highlander AWD models, this intelligent system lets you choose between four modes for improved traction. When activated, the system is designed to sense slippage and regulate wheelspin — helping to maximize driving performance on different surfaces.

### Dynamic Torque Vectoring AWD

This available system enhances responsiveness and stability by sending up to 50 percent of the power to the rear and then further distributing more power to the wheel that needs it.

### V6 versatility

Ready for action. From date nights to day trips, Highlander V6 models have up to an EPA-estimated 24 combined mpg rating<sup>3</sup> to help you get the most out of every drive.

### V6 power

Highlander's powerful and smooth 3.5-liter V6 engine produces 295 hp and 263 lb.-ft. of torque. And when adventures require more, take advantage of its impressive towing capacity of up to 5000 lbs.<sup>2</sup>

### Available drive modes

Three distinct drive modes let you tailor Highlander's driving dynamics. Sport Mode provides sharper acceleration, ECO Mode helps maximize fuel efficiency, and Normal Mode blends fuel economy with performance.

See numbered footnotes in Disclosures section.

INTERIOR

# Focused on you.

Highlander is ready to elevate every moment with its plush, modern interior. Up front, an available 12.3-in. touchscreen display gives you access to a variety of its systems with an intuitive touch. Even the center console features available Qi-compatible wireless smartphone charging<sup>4</sup> to bring more convenience to your drive.



### Premium interior

Feel the quality from every seat. A standard power-adjustable driver's seat, available heated and ventilated front seats, and available heated second-row seats allow you and your crew to personalize comfort, while the premium materials throughout raise its level of sophistication.



### Third-row seating

When you're loading it up with your crew, Highlander's available second-row bench seating and third-row seats let you carry up to eight people.



### Storage capacity

Highlander's interior is as versatile as your life demands. When you need to put a priority on cargo space, the second- and third-row seats fold flat to open up to 84.3 cu. ft. of space.<sup>5</sup>



### Panoramic moonroof

Follow the stars above with Highlander's available panoramic glass roof with front power tilt/slide moonroof. Slide it open to catch a breeze and enjoy the wide-open view, or easily close it all up with the power-retractable sunshade.



### Two-tone XSE interior

The sporty vibe of Highlander XSE continues inside, with a look to match. Available red and black leather-trimmed seats with red accent stitching across the instrument panel emphasize its modern design and will inspire you to take it to new places.

See numbered footnotes in Disclosures section.



XSE AWD shown in Magnetic Gray Metallic. Below left: XSE 20-in. wheel shown. Below center: Platinum AWD shown in Moon Dust.<sup>1</sup> Below right: XSE AWD shown in Magnetic Gray Metallic.

EXTERIOR

# Style as unique as you are.

Highlander’s sleek design will turn heads wherever you go. Expanded fender flares accentuate its wide stance, while muscular character lines run all the way from the hood to the rear to help define its modern design and inspire you to pursue your passions.

### Twin-tip exhaust

Underneath XSE’s unique rear bumper features Highlander’s first-ever twin-tip exhaust. Chrome-plated for durability and added attention, the exhaust tips show off a clean look that helps finish off the sportier rear design.

### 20-in. wheels

Highlander shows off more style with its selection of 20-in. alloy wheels. Standard on XSE, Limited and Platinum, these sleek wheels add more sophistication without compromising performance.

### Hands-free power rear liftgate

Easy to use and even more convenient. When your hands are full, Highlander’s available hands-free power liftgate senses your Smart Key fob and opens automatically when you kick your foot under the rear bumper.<sup>6</sup>

### LED headlights

Highlander’s stylish standard LED headlights provide a crisp, clean light, while available auto-leveling LED projector-beam headlights help keep light aimed down at the road for better visibility.



See numbered footnotes in Disclosures section.



This image and below right: Platinum Hybrid AWD shown in Ruby Flare Pearl.  
Do not overload your vehicle. See Owner's Manual for weight limits and restrictions.

HYBRID

# Get the most out of every mile.

Highlander Hybrid has the drive to do it all. With a choice of Front-Wheel Drive (FWD) for efficient capability or All-Wheel Drive (AWD) for extra traction, its hybrid powertrain gets you to more places with up to an EPA-estimated 36 mpg combined rating.<sup>3</sup>

**36**  
EPA-est. mpg<sup>3</sup>



## Hybrid drive modes

Highlander Hybrid offers multiple selectable driving modes that let you choose how it performs: Normal for everyday driving, ECO for maximum efficiency, Sport for improved acceleration, EV Mode<sup>7</sup> which allows electric-only driving at low speeds for short distances, and Trail Mode, which gives AWD models added traction.

## 1500W power inverter

Highlander Hybrid lets you bring the creature comforts of home wherever you go. Just plug into the available 1500W power inverter<sup>8</sup> in the rear cargo area to power up your essentials.

See numbered footnotes in Disclosures section.

# Amplify your drive.

Take advantage of smarter and convenient technologies designed to simplify your everyday life. From a suite of services that are there for you 24/7 to an immersive audio multimedia system, you can stay connected to your world.



## Connected Services

Our available suite of Connected Services provides added convenience and peace of mind.<sup>9</sup>

- ✓ **Safety Connect<sup>®</sup>**  
Emergency SOS assistance and 24/7 Toyota Roadside Assistance.<sup>10, 11</sup>
- ✓ **Service Connect**  
Get personalized maintenance updates and vehicle health reports.<sup>12</sup>
- ✓ **Remote Connect**  
Start, lock/unlock your doors and more, using your compatible smart device.<sup>13</sup>
- ✓ **Wi-Fi Connect**  
Turn your Toyota into a hotspot with 4G connectivity.<sup>14</sup>
- ✓ **Destination Assist**  
24/7 live agent assistance to locate your next destination.<sup>15</sup>

To view included trial details, please visit [toyota.com/connected-services](http://toyota.com/connected-services).

## Audio Multimedia

Make every drive more personal. By utilizing your vehicle's touchscreen display and audio multimedia capabilities, you'll always have access to what you want. Whether it's listening to your favorite playlist or finding the most scenic route to your destination, you'll enjoy the latest in connectivity and technologies that are all about you.



## Apple CarPlay<sup>®</sup>

Bring along a familiar face. With Apple CarPlay<sup>®16</sup> compatibility, you can use your compatible iPhone<sup>®17</sup> with the audio multimedia system to get directions, make calls, send and receive messages, and listen to music — all while staying focused on your commute.



## Android Auto<sup>™</sup>

Stay connected on the road. By pairing your compatible Android<sup>™18</sup> phone with the audio multimedia system, Android Auto<sup>™19</sup> lets you access your Google Assistant, get real-time traffic alerts, make and receive phone calls, listen to your favorite soundtrack and more.



## SiriusXM<sup>®</sup> All Access 3-month trial subscription

Enjoy listening to what you want to hear. With SiriusXM<sup>®20</sup> you get the deepest variety of ad-free music, more sports coverage than anywhere else, exclusive talk channels, every kind of comedy, and the most complete news coverage.<sup>21</sup>



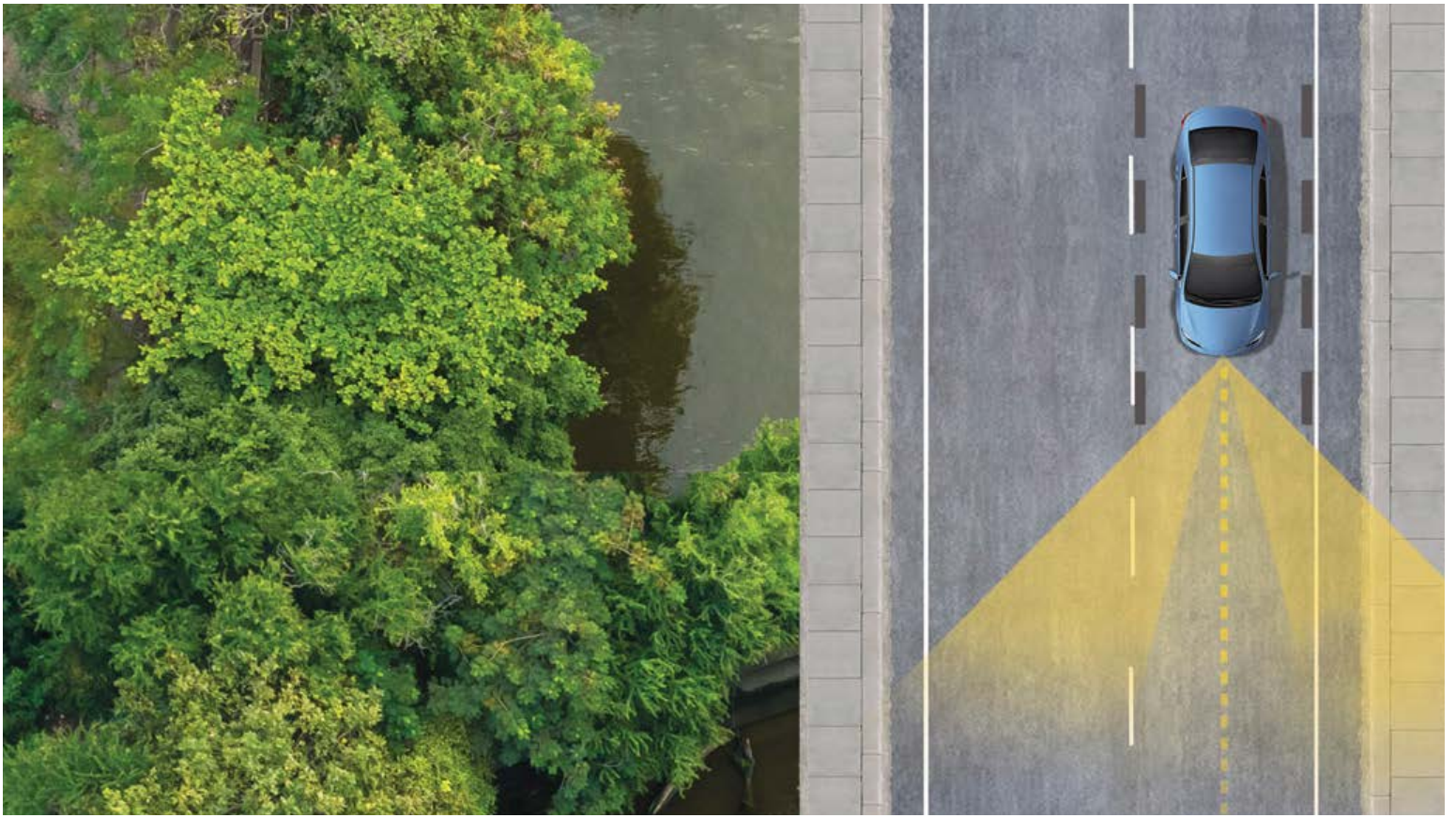
## Amazon Alexa

Almost anywhere the road takes you, Amazon Alexa<sup>22</sup> connectivity follows. With a smartphone connection and the Toyota+Alexa app, all you have to do is ask Alexa to play music, listen to audiobooks, hear the news, check weather, control smart-home devices and more.



## JBL<sup>®</sup>

Feel the difference and hear the truth. Designed specifically for Toyota, JBL<sup>®23</sup> finely tunes each speaker to the interior of the vehicle. Just turn up the volume to hear the crisp, rich, vibrant sound come through.



TOYOTA SAFETY SENSE™ 2.5+ (TSS 2.5+)

# Peace of mind comes standard.

Toyota Safety Sense™ 2.5+ (TSS 2.5+)²⁴ is the latest bundle of active safety features included on many new Toyota vehicles at no additional cost. These innovative features were designed to help protect you and your passengers from harm.



Pre-Collision System with Pedestrian Detection<sup>25</sup>



Full-Speed Range Dynamic Radar Cruise Control<sup>26</sup>



Lane Departure Alert with Steering Assist<sup>27</sup>



Automatic High Beams<sup>28</sup>



Lane Tracing Assist<sup>29</sup>



Road Sign Assist<sup>30</sup>



## HIGHLANDER MODELS



### L

Includes these key features

#### Mechanical/Performance

- ✓ 3.5-Liter V6 with 295 hp
- ✓ Direct Shift-8AT (8-speed Electronically Controlled automatic Transmission)
- ✓ Front-Wheel Drive (FWD)
- ✓ Available All-Wheel Drive (AWD)
- ✓ Snow Mode + Drive Mode Select (ECO, Normal, Sport)
- ✓ Available Multi-Terrain Select (Mud/Sand, Rock/Dirt, Normal)
- ✓ Up to 21 city/29 highway/24 combined EPA-est. mpg rating<sup>3</sup>

#### Exterior Features

- ✓ Color-keyed heated power outside mirrors with turn signal and manual folding feature
- ✓ LED projector headlights with Daytime Running Lights (DRL)
- ✓ LED taillights
- ✓ Front grille in material black with silver paint surround
- ✓ 18-in. painted alloy wheels
- ✓ Privacy glass on rear side, quarter and liftgate windows
- ✓ Color-keyed side rocker panels and lower molding
- ✓ Rear camera washer

#### Interior Features

- ✓ Seating for eight
- ✓ Three-zone automatic climate control
- ✓ Fabric-trimmed seats
  - 8-way power-adjustable driver's seat
  - 4-way manual-adjustable front passenger seat
  - 60/40 split, sliding and reclining fold-flat second-row bench seats
  - 60/40 split, fold-flat third-row seats
- ✓ Five total USB ports<sup>31</sup> and two 12V outlets<sup>32</sup>
- ✓ Soft-touch roll-top center console with removable utility tray
- ✓ 4.2-in. color LCD Multi-Information Display (MID)
- ✓ Smart Key System<sup>33</sup> with Push Button Start

#### Audio Multimedia

- ✓ Audio includes:
  - 8.0-in. touchscreen and six speakers
  - Android Auto<sup>TM19</sup> & Apple CarPlay<sup>®16</sup> compatible
  - SiriusXM<sup>®20</sup> with 3-month All Access trial subscription<sup>21</sup>
- ✓ Connected Services<sup>9</sup> trials,<sup>70</sup> including Safety Connect<sup>®10, 50</sup> and Wi-Fi Connect<sup>14, 51</sup>

#### Safety Features

- ✓ Toyota Safety Sense<sup>™</sup> 2.5+ (TSS 2.5+)<sup>24</sup>
- ✓ Star Safety System<sup>™</sup>
- ✓ Eight airbags<sup>34</sup>
- ✓ Rear-seat reminder



### LE

Adds to or replaces features offered on L

#### Mechanical/Performance

- ✓ Available All-Wheel Drive (AWD)
- ✓ Available Multi-Terrain Select (Mud/Sand, Rock/Dirt, Normal)
- ✓ Up to 21 city/29 highway/24 combined EPA-est. mpg rating<sup>3</sup>

#### Exterior Features

- ✓ Color-keyed heated power outside mirrors with turn signal and blind spot warning<sup>35</sup> indicators and manual folding feature
- ✓ LED fog lights
- ✓ Height-adjustable power liftgate with jam protection

#### Interior Features

- ✓ Seating for eight
- ✓ Leather-trimmed shift knob and steering wheel
- ✓ Smart Key System<sup>33</sup> with Push Button Start with liftgate functions

#### Audio Multimedia

- ✓ Audio Plus includes:
  - 8.0-in. touchscreen and six speakers
  - Android Auto<sup>TM19</sup> & Apple CarPlay<sup>®16</sup> compatible
  - SiriusXM<sup>®20</sup> with 3-month All Access trial subscription<sup>21</sup>
- ✓ Connected Services<sup>9</sup> trials,<sup>70</sup> including Safety Connect<sup>®10, 50</sup>, Service Connect<sup>12, 52</sup>, Remote Connect<sup>13, 53</sup> and Wi-Fi Connect<sup>14, 51</sup>

#### Safety Features

- ✓ Toyota Safety Sense<sup>™</sup> 2.5+ (TSS 2.5+)<sup>24</sup>
- ✓ Blind Spot Monitor (BSM)<sup>35</sup> with Rear Cross-Traffic Alert (RCTA)<sup>36</sup>
- ✓ Star Safety System<sup>™</sup>
- ✓ Eight airbags<sup>34</sup>
- ✓ Rear-seat reminder



### XLE

Adds to or replaces features offered on LE

#### Mechanical/Performance

- ✓ Available All-Wheel Drive (AWD)
- ✓ Available Multi-Terrain Select (Mud/Sand, Rock/Dirt, Normal)
- ✓ Up to 21 city/29 highway/24 combined EPA-est. mpg rating<sup>3</sup>

#### Exterior Features

- ✓ 18-in. machined-finish alloy wheels
- ✓ Power tilt/slide moonroof
- ✓ Roof rails

#### Interior Features

- ✓ Seating for up to eight
- ✓ Qi-compatible wireless smartphone charging<sup>4</sup>
- ✓ Auto-dimming rearview mirror with HomeLink<sup>®37</sup> universal transceiver
- ✓ SofTex<sup>®</sup>-trimmed<sup>38</sup> front- and second-row seats
  - Heated front seats
  - 10-way power-adjustable driver's seat including power lumbar support
  - 4-way power-adjustable front passenger seat
- ✓ 7-in. color LCD Multi-Information Display (MID)
- ✓ Second-row sunshades

#### Audio Multimedia

- ✓ Audio Plus includes:
  - 8.0-in. touchscreen and six speakers
  - Android Auto<sup>TM19</sup> & Apple CarPlay<sup>®16</sup> compatible
  - SiriusXM<sup>®20</sup> with 3-month All Access trial subscription<sup>21</sup>
- ✓ Connected Services<sup>9</sup> trials,<sup>70</sup> including Safety Connect<sup>®10, 50</sup>, Service Connect<sup>12, 52</sup>, Remote Connect<sup>13, 53</sup> and Wi-Fi Connect<sup>14, 51</sup>

#### Safety Features

- ✓ Toyota Safety Sense<sup>™</sup> 2.5+ (TSS 2.5+)<sup>24</sup>
- ✓ Blind Spot Monitor (BSM)<sup>35</sup> with Rear Cross-Traffic Alert (RCTA)<sup>36</sup>
- ✓ Star Safety System<sup>™</sup>
- ✓ Eight airbags<sup>34</sup>
- ✓ Rear-seat reminder

#### Packages/Options

- ✓ Premium Audio with Dynamic Navigation<sup>39</sup> with 3-year trial<sup>40</sup>
- ✓ Seating for up to eight with second-row bench seat and 60/40 split/fold seats

## HIGHLANDER MODELS



### XSE

Adds to or replaces features offered on XLE

#### Mechanical/Performance

- ✓ Sport-tuned suspension
- ✓ Available All-Wheel Drive (AWD)
- ✓ Available Multi-Terrain Select (Mud/Sand, Rock/Dirt, Normal)
- ✓ Up to 21 city/29 highway/24 combined EPA-est. mpg rating<sup>3</sup>

#### Exterior Features

- ✓ LED projector headlights with black accents and LED-strip Daytime Running Lights (DRL)
- ✓ 20-in. machined-finish alloy wheels
- ✓ Aggressive mesh front grille with sporty front bumper and lower spoiler
- ✓ Rear lower bumper in gray metallic finish with chrome lower spoiler trim
- ✓ Color-keyed side rocker panels with chrome lower trim
- ✓ Black roof rails
- ✓ Twin-tip exhaust

#### Interior Features

- ✓ Seating for seven
- ✓ SofTex<sup>®</sup>-trimmed<sup>38</sup> front- and second-row seats
  - Heated front seats
  - 10-way power-adjustable driver's seat including power lumbar support
  - 4-way power-adjustable front passenger seat
- ✓ Ambient interior lighting

#### Audio Multimedia

- ✓ Audio Plus includes:
  - 8.0-in. touchscreen and six speakers
  - Android Auto<sup>™19</sup> & Apple CarPlay<sup>®16</sup> compatible
  - SiriusXM<sup>®20</sup> with 3-month All Access trial subscription<sup>21</sup>
- ✓ Connected Services<sup>9</sup> trials,<sup>70</sup> including Safety Connect<sup>®10, 50</sup> Service Connect,<sup>12, 52</sup> Remote Connect<sup>13, 53</sup> and Wi-Fi Connect<sup>14, 51</sup>

#### Safety Features

- ✓ Toyota Safety Sense<sup>™</sup> 2.5+ (TSS 2.5+)<sup>24</sup>
- ✓ Blind Spot Monitor (BSM)<sup>35</sup> with Rear Cross-Traffic Alert (RCTA)<sup>36</sup>
- ✓ Star Safety System<sup>™</sup>
- ✓ Eight airbags<sup>34</sup>
- ✓ Rear-seat reminder

#### Packages/Options

- ✓ Premium Audio with Dynamic Navigation<sup>39</sup> with 3-year trial<sup>40</sup> and 11 JBL<sup>®23</sup> speakers including subwoofer and amplifier
- ✓ Red leather-trimmed front- and second-row seats



### Limited

Adds to or replaces features offered on XLE

#### Mechanical/Performance

- ✓ Available All-Wheel Drive (AWD)
- ✓ Available Multi-Terrain Select (Mud/Sand, Rock/Dirt, Normal)
- ✓ Up to 21 city/29 highway/24 combined EPA-est. mpg rating<sup>3</sup>

#### Exterior Features

- ✓ Color-keyed heated power outside mirrors with puddle lights with integrated Highlander logo, turn signal, blind spot warning<sup>35</sup> indicators and memory feature
- ✓ High-output LED fog lights
- ✓ 20-in. chrome wheels
- ✓ Front grille in black paint with chrome-plated surround
- ✓ Height-adjustable hands-free power liftgate with jam protection<sup>6</sup>

#### Interior Features

- ✓ Seating for up to eight
- ✓ Leather-trimmed front- and second-row seats
  - Heated and ventilated front seats
  - 10-way power-adjustable driver's seat including power lumbar support
  - 4-way power-adjustable front passenger seat
  - Seat memory function
- ✓ Heated steering wheel
- ✓ Faux wood door trim and ornamental dash trim
- ✓ Front doorsill metal scuff plate
- ✓ One 120V outlet (100W)<sup>41</sup> located on the bottom rear of the center console

#### Audio Multimedia

- ✓ Premium Audio includes:
  - Dynamic Navigation<sup>39</sup> with 3-year trial<sup>40</sup>
  - 8.0-in. touchscreen with 11 JBL<sup>®23</sup> speakers including subwoofer and amplifier
  - Android Auto<sup>™19</sup> & Apple CarPlay<sup>®16</sup> compatible
  - SiriusXM<sup>®20</sup> with 3-month All Access trial subscription<sup>21</sup>
- ✓ Connected Services<sup>9</sup> trials,<sup>70</sup> including Safety Connect<sup>®10, 50</sup> Service Connect,<sup>12, 52</sup> Remote Connect,<sup>13, 53</sup> Wi-Fi Connect<sup>14, 51</sup> and Destination Assist<sup>15, 54</sup>

#### Safety Features

- ✓ Toyota Safety Sense<sup>™</sup> 2.5+ (TSS 2.5+)<sup>24</sup>
- ✓ Blind Spot Monitor (BSM)<sup>35</sup> with Rear Cross-Traffic Alert (RCTA)<sup>36</sup>
- ✓ Star Safety System<sup>™</sup>
- ✓ Eight airbags<sup>34</sup>
- ✓ Rear-seat reminder

#### Packages/Options

- ✓ 12.3-in. touchscreen with Bird's Eye View Camera<sup>42</sup>
- ✓ Seating for up to eight with second-row bench seat and 60/40 split/fold seats



### Platinum

Adds to or replaces features offered on Limited

#### Mechanical/Performance

- ✓ Available All-Wheel Drive (AWD)
- ✓ Available Multi-Terrain Select (Mud/Sand, Rock/Dirt, Normal)
- ✓ Up to 21 city/29 highway/24 combined EPA-est. mpg rating<sup>3</sup>

#### Exterior Features

- ✓ LED projector headlights with Adaptive Front-Lighting System (AFS),<sup>43</sup> auto leveling and LED-strip Daytime Running Lights (DRL)
- ✓ Front grille in black paint and chrome-plated surround with front lower bumper in silver finish
- ✓ Rear lower bumper accent
- ✓ Rear bumper scuff plate
- ✓ 20-in. alloy wheels
- ✓ Rain-sensing washer-linked variable intermittent windshield wipers
- ✓ Power Panoramic View Moonroof with sunshade and one-touch open/close with jam protection

#### Interior Features

- ✓ Seating for seven
- ✓ Leather-trimmed front- and second-row seats
  - Heated and ventilated front seats
  - Heated second-row captain's chairs
  - 10-way power-adjustable driver's seat including power lumbar support
  - 4-way power-adjustable front passenger seat
  - Seat memory function
- ✓ 10-in. color Head-Up Display (HUD)
- ✓ Digital rearview mirror with HomeLink<sup>®37</sup> universal transceiver
- ✓ Illuminated front doorsill metal scuff plate

#### Audio Multimedia

- ✓ Premium Audio includes:
  - Dynamic Navigation<sup>39</sup> with 3-year trial<sup>40</sup>
  - 12.3-in. touchscreen with 11 JBL<sup>®23</sup> speakers including subwoofer and amplifier
  - Bird's Eye View Camera<sup>42</sup>
  - Android Auto<sup>™19</sup> & Apple CarPlay<sup>®16</sup> compatible
  - SiriusXM<sup>®20</sup> with 3-month All Access trial subscription<sup>21</sup>
- ✓ Connected Services<sup>9</sup> trials,<sup>70</sup> including Safety Connect<sup>®10, 50</sup> Service Connect,<sup>12, 52</sup> Remote Connect,<sup>13, 53</sup> Wi-Fi Connect<sup>14, 51</sup> and Destination Assist<sup>15, 54</sup>

#### Safety Features

- ✓ Toyota Safety Sense<sup>™</sup> 2.5+ (TSS 2.5+)<sup>24</sup>
- ✓ Blind Spot Monitor (BSM)<sup>35</sup> with Rear Cross-Traffic Alert (RCTA)<sup>36</sup>
- ✓ Star Safety System<sup>™</sup>
- ✓ Eight airbags<sup>34</sup>
- ✓ Rear-seat reminder

## HIGHLANDER HYBRID MODELS



### Hybrid LE

Includes these key features

#### Mechanical/Performance

- ✓ 2.5-Liter L4HV engine
- ✓ Electronically controlled Continuously Variable Transmission (ECVT)
- ✓ Front-Wheel Drive (FWD)
- ✓ Available Electronic All-Wheel Drive (AWD)
- ✓ Available Trail Mode
- ✓ Up to 36 city/35 highway/36 combined EPA-est. mpg rating<sup>3</sup>

#### Exterior Features

- ✓ Color-keyed heated power outside mirrors with turn signal and blind spot warning<sup>35</sup> indicators and manual folding feature
- ✓ LED fog lights
- ✓ Grille shutters
- ✓ Height-adjustable power liftgate with jam protection

#### Interior Features

- ✓ Seating for eight
- ✓ Leather-trimmed shift knob and steering wheel
- ✓ Smart Key System<sup>33</sup> with Push Button Start with liftgate functions

#### Audio Multimedia

- ✓ Audio Plus includes:
  - 8.0-in. touchscreen and six speakers
  - Android Auto<sup>TM19</sup> & Apple CarPlay<sup>®16</sup> compatible
  - SiriusXM<sup>®20</sup> with 3-month All Access trial subscription<sup>21</sup>
- ✓ Connected Services<sup>9</sup> trials,<sup>70</sup> including Safety Connect,<sup>®10, 50</sup> Service Connect,<sup>12, 52</sup> Remote Connect<sup>13, 53</sup> and Wi-Fi Connect<sup>14, 51</sup>

#### Safety Features

- ✓ Toyota Safety Sense™ 2.5+ (TSS 2.5+)<sup>24</sup>
- ✓ Blind Spot Monitor (BSM)<sup>35</sup> with Rear Cross-Traffic Alert (RCTA)<sup>36</sup>
- ✓ Star Safety System™
- ✓ Eight airbags<sup>34</sup>
- ✓ Rear-seat reminder



### Hybrid XLE

Adds to or replaces features offered on Hybrid LE

#### Mechanical/Performance

- ✓ Available Electronic All-Wheel Drive (AWD)
- ✓ Available Trail Mode
- ✓ Up to 36 city/35 highway/36 combined EPA-est. mpg rating<sup>3</sup>

#### Exterior Features

- ✓ 18-in. machined-finish alloy wheels
- ✓ Power tilt/slide moonroof
- ✓ Roof rails

#### Interior Features

- ✓ Seating for up to eight
- ✓ Qi-compatible wireless smartphone charging<sup>4</sup>
- ✓ Auto-dimming rearview mirror with HomeLink<sup>®37</sup> universal transceiver
- ✓ SofTex<sup>®</sup>-trimmed<sup>38</sup> front- and second-row seats
  - Heated front seats
  - 10-way power-adjustable driver's seat including power lumbar support
  - 4-way power-adjustable front passenger seat
- ✓ 7-in. color LCD Multi-Information Display (MID)
- ✓ Second-row sunshades

#### Audio Multimedia

- ✓ Audio Plus includes:
  - 8.0-in. touchscreen and six speakers
  - Android Auto<sup>TM19</sup> & Apple CarPlay<sup>®16</sup> compatible
  - SiriusXM<sup>®20</sup> with 3-month All Access trial subscription<sup>21</sup>
- ✓ Connected Services<sup>9</sup> trials,<sup>70</sup> including Safety Connect,<sup>®10, 50</sup> Service Connect,<sup>12, 52</sup> Remote Connect<sup>13, 53</sup> and Wi-Fi Connect<sup>14, 51</sup>

#### Safety Features

- ✓ Toyota Safety Sense™ 2.5+ (TSS 2.5+)<sup>24</sup>
- ✓ Blind Spot Monitor (BSM)<sup>35</sup> with Rear Cross-Traffic Alert (RCTA)<sup>36</sup>
- ✓ Star Safety System™
- ✓ Eight airbags<sup>34</sup>
- ✓ Rear-seat reminder

#### Packages/Options

- ✓ Premium Audio with Dynamic Navigation<sup>39</sup> with 3-year trial<sup>40</sup>
- ✓ Seating for eight with second-row bench seat and 60/40 split/fold seats



### Hybrid Limited

Adds to or replaces features offered on Hybrid XLE

#### Mechanical/Performance

- ✓ Available Electronic All-Wheel Drive (AWD)
- ✓ Available Trail Mode
- ✓ Up to 36 city/35 highway/36 combined EPA-est. mpg rating<sup>3</sup>

#### Exterior Features

- ✓ Color-keyed heated power outside mirrors with puddle lights with integrated Highlander logo, turn signal, blind spot warning<sup>35</sup> indicators and memory feature
- ✓ High-output LED fog lights
- ✓ 20-in. chrome wheels
- ✓ Front grille in black paint with chrome-plated surround
- ✓ Height-adjustable hands-free power liftgate with jam protection<sup>6</sup>

#### Interior Features

- ✓ Seating for up to eight
- ✓ Leather-trimmed front- and second-row seats
  - Heated and ventilated front seats
  - 10-way power-adjustable driver's seat including power lumbar support
  - 4-way power-adjustable front passenger seat
  - Seat memory function
- ✓ Heated steering wheel
- ✓ Faux wood door trim and ornamental dash trim
- ✓ Front door sill metal scuff plate
- ✓ Two 120V outlets (1500W shared)<sup>8</sup> located on the bottom rear of center console and in the luggage area
- ✓ Ambient interior lighting

#### Audio Multimedia

- ✓ Premium Audio includes:
  - Dynamic Navigation<sup>39</sup> with 3-year trial<sup>40</sup>
  - 8.0-in. touchscreen with 11 JBL<sup>®23</sup> speakers including subwoofer and amplifier
  - Android Auto<sup>TM19</sup> & Apple CarPlay<sup>®16</sup> compatible
  - SiriusXM<sup>®20</sup> with 3-month All Access trial subscription<sup>21</sup>
- ✓ Connected Services<sup>9</sup> trials,<sup>70</sup> including Safety Connect,<sup>®10, 50</sup> Service Connect,<sup>12, 52</sup> Remote Connect,<sup>13, 53</sup> Wi-Fi Connect<sup>14, 51</sup> and Destination Assist<sup>15, 54</sup>

#### Safety Features

- ✓ Toyota Safety Sense™ 2.5+ (TSS 2.5+)<sup>24</sup>
- ✓ Blind Spot Monitor (BSM)<sup>35</sup> with Rear Cross-Traffic Alert (RCTA)<sup>36</sup>
- ✓ Star Safety System™
- ✓ Eight airbags<sup>34</sup>
- ✓ Rear-seat reminder

#### Packages/Options

- ✓ 12.3-in. touchscreen with Bird's Eye View Camera<sup>42</sup>
- ✓ Seating for up to eight with second-row bench seat and 60/40 split/fold seats

## HIGHLANDER HYBRID MODELS



### Hybrid Platinum

Adds to or replaces features offered on Hybrid Limited

#### Mechanical/Performance

- ✓ Available Electronic All-Wheel Drive (AWD)
- ✓ Available Trail Mode
- ✓ Up to 36 city/35 highway/36 combined EPA-est. mpg rating<sup>3</sup>

#### Exterior Features

- ✓ LED projector headlights with Adaptive Front-Lighting System (AFS)<sup>43</sup> auto leveling and LED-strip Daytime Running Lights (DRL)
- ✓ Front grille in black paint and chrome-plated surround with front lower bumper in silver finish
- ✓ Rear lower bumper accent
- ✓ Rear bumper scuff plate
- ✓ 20-in. alloy wheels
- ✓ Rain-sensing washer-linked variable intermittent windshield wipers
- ✓ Power Panoramic View Moonroof with sunshade and one-touch open/close with jam protection

#### Interior Features

- ✓ Seating for seven
- ✓ Leather-trimmed front- and second-row seats
  - Heated and ventilated front seats
  - Heated second-row captain's chairs
  - 10-way power-adjustable driver's seat including power lumbar support
  - 4-way power-adjustable front passenger seat
  - Seat memory function
- ✓ 10-in. color Head-Up Display (HUD)
- ✓ Digital rearview mirror with HomeLink<sup>®37</sup> universal transceiver
- ✓ Illuminated front doorsill metal scuff plate

#### Audio Multimedia

- ✓ Premium Audio includes:
  - Dynamic Navigation<sup>39</sup> with 3-year trial<sup>40</sup>
  - 12.3-in. touchscreen with 11 JBL<sup>®23</sup> speakers including subwoofer and amplifier
  - Bird's Eye View Camera<sup>42</sup>
  - Android Auto<sup>™19</sup> & Apple CarPlay<sup>®16</sup> compatible
  - SiriusXM<sup>®20</sup> with 3-month All Access trial subscription<sup>21</sup>
- ✓ Connected Services<sup>9</sup> trials,<sup>70</sup> including Safety Connect,<sup>®10, 50</sup> Service Connect,<sup>12, 52</sup> Remote Connect,<sup>13, 53</sup> Wi-Fi Connect<sup>14, 51</sup> and Destination Assist<sup>15, 54</sup>

#### Safety Features

- ✓ Toyota Safety Sense<sup>™</sup> 2.5+ (TSS 2.5+)<sup>24</sup>
- ✓ Blind Spot Monitor (BSM)<sup>35</sup> with Rear Cross-Traffic Alert (RCTA)<sup>36</sup>
- ✓ Star Safety System<sup>™</sup>
- ✓ Eight airbags<sup>34</sup>
- ✓ Rear-seat reminder

HIGHLANDER COLORS & TRIMS



Midnight Black Metallic



Blueprint



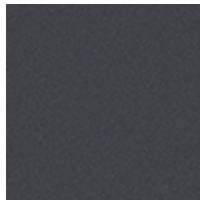
Moon Dust<sup>1</sup>



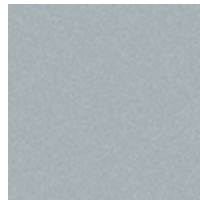
Ruby Flare Pearl<sup>1</sup>



Opulent Amber



Magnetic Gray Metallic



Celestial Silver Metallic



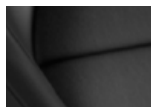
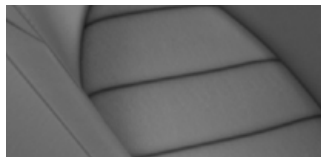
Blizzard Pearl<sup>1</sup>

L/LE fabric shown in Graphite



Black

XLE SofTex<sup>®38</sup> trim shown in Graphite



Black



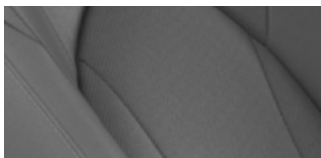
Harvest Beige

XSE Black mixed media trim



Cockpit Red leather trim

Limited leather trim shown in Graphite

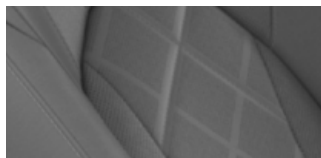


Black



Harvest Beige

Platinum leather trim shown in Graphite



Black



Harvest Beige



Glazed Caramel

HIGHLANDER WHEELS



L/LE 18-in. alloy wheel



XLE 18-in. machined-finish alloy wheel



XSE 20-in. machined-finish alloy wheel



Limited 20-in. chrome wheel



Platinum 20-in. alloy wheel

## HIGHLANDER ACCESSORIES

This is a great way to add extra personality to your Highlander. Not every accessory is available in your area, so for a complete list of accessories, go to [toyota.com/highlander/accessories](http://toyota.com/highlander/accessories).



Roof rack cross bars<sup>44</sup>



Running boards



Cargo net — envelope<sup>5</sup>



Trailer ball and ball mount<sup>2</sup>



Carpet floor mats<sup>45</sup>



Rear bumper protector



Cargo liner<sup>5</sup>



All-weather floor liner<sup>45</sup>



Illuminated doorsill

## WARRANTIES

Every Toyota Car, Truck and SUV is built to exceptional standards. And that's not idle boasting. We back it up with these Limited Warranty Coverages:

**Basic:** 36 months/36,000 miles (all components other than normal wear and maintenance items).

**Hybrid-Related Component Coverage:** Hybrid-related components, including the battery control module, hybrid control module and inverter with converter, are covered for 8 years/100,000 miles. Refer to applicable *Warranty and Maintenance Guide* for details.

**Hybrid Battery:** HV battery is covered for 10 years or 150,000 miles, whichever comes first. Warranty coverage is subject to terms and conditions. Refer to applicable *Warranty and Maintenance Guide* for details.

**Powertrain:** 60 months/60,000 miles (engine, transmission/transaxle, drive system, seatbelts and airbags).

**Rust-Through:** 60 months/unlimited miles (corrosion perforation of sheet metal).

**Emissions:** Coverages vary under Federal and California regulations. Refer to applicable *Warranty and Maintenance Guide* for details.

**Accessories:** For Genuine Toyota Accessories purchased at the time of the new vehicle purchase, the Toyota Accessory Warranty coverage is in effect for 36 months/36,000 miles from the vehicle's in-service date, which is the same coverage as the Toyota New Vehicle Limited Warranty.

For Genuine Toyota Accessories purchased after the new vehicle purchase the coverage is 12 months, regardless of mileage, from the date the accessory was installed on the vehicle, or the remainder of any applicable new vehicle warranty, whichever provides greater coverage.

You may be eligible for transportation assistance if it's necessary that your vehicle be kept overnight for repairs covered under warranty. Please see your authorized Toyota dealership for further details.

For complete details about Toyota's warranties, please visit [www.toyota.com](http://www.toyota.com), refer to the applicable *Warranty and Maintenance Guide* or see your Toyota dealer.

# HIGHLANDER FEATURES<sup>69</sup>

S = Standard O = Optional P = Available as part of a package

| Exterior   | L | LE | XLE | XSE | Limited | Platinum | Hybrid LE | Hybrid XLE | Hybrid Limited | Hybrid Platinum |
|--|---|----|-----|-----|---------|----------|-----------|------------|----------------|-----------------|
| Smart Key System <sup>33</sup> on front doors and liftgate with Push Button Start, remote keyless entry system with lock, unlock and panic functions; remote illuminated entry                                   | S |    |     |     |         |          |           |            |                |                 |
| Smart Key System <sup>33</sup> on front doors and liftgate with Push Button Start, remote keyless entry system with lock, unlock, panic and liftgate functions; remote illuminated entry                         |   | S  | S   | S   | S       | S        | S         | S          | S              | S               |
| Color-keyed heated power outside mirrors with turn signal and manual folding feature   | S |    |     |     |         |          |           |            |                |                 |
| Color-keyed heated power outside mirrors with turn signal and blind spot warning <sup>35</sup> indicators, and manual folding feature  |   | S  | S   | S   |         |          | S         | S          |                |                 |
| Color-keyed heated power outside mirrors with puddle lights with integrated Highlander logo, turn signal, blind spot warning <sup>35</sup> indicators, manual folding, and reverse tilt-down with memory feature |   |    |     |     | S       | S        |           |            | S              | S               |
| LED projector headlights with Daytime Running Lights (DRL)   | S | S  | S   |     |         |          | S         | S          |                |                 |
| LED projector headlights with black accents and LED-strip Daytime Running Lights (DRL)   |   |    |     | S   |         |          |           |            |                |                 |
| LED projector headlights with LED-strip Daytime Running Lights (DRL)   |   |    |     |     | S       |          |           |            | S              |                 |
| LED projector headlights with Adaptive Front-Lighting System (AFS) <sup>43</sup> auto leveling and LED-strip Daytime Running Lights (DRL)  |   |    |     |     |         | S        |           |            |                | S               |
| LED fog lights   |   | S  | S   | S   |         |          | S         | S          |                |                 |
| High-output LED fog lights   |   |    |     |     | S       | S        |           |            | S              | S               |
| LED taillights   | S | S  | S   | S   | S       | S        | S         | S          | S              | S               |
| Washer-linked variable intermittent windshield wipers and intermittent rear wiper  | S | S  | S   | S   | S       |          | S         | S          | S              |                 |
| Rain-sensing washer-linked variable intermittent windshield wipers and intermittent rear wiper   |   |    |     |     |         | S        |           |            |                | S               |
| Windshield wiper de-icer   | S | S  | S   | S   | S       | S        | S         | S          | S              | S               |
| Rear liftgate windshield defogger  | S | S  | S   | S   | S       | S        | S         | S          | S              | S               |
| Rear liftgate windshield washer and backup camera washer   | S | S  | S   | S   | S       | S        | S         | S          | S              | S               |
| High Solar Energy-Absorbing (HSEA) glass on front and rear side windows  | S | S  | S   | S   | S       | S        | S         | S          | S              | S               |
| Privacy glass on rear side, quarter and liftgate windows   | S | S  | S   | S   | S       | S        | S         | S          | S              | S               |
| 18-in. painted alloy wheels and P235/65R18 tires   | S | S  |     |     |         |          | S         |            |                |                 |
| 18-in. machined-finish alloy wheels and P235/65R18 tires   |   |    | S   |     |         |          |           | S          |                |                 |
| 20-in. machined-face alloy wheels with P235/55R20 tires  |   |    |     | S   |         |          |           |            |                |                 |
| 20-in. chrome wheels and P235/55R20 tires  |   |    |     |     | S       |          |           |            | S              |                 |
| 20-in. alloy wheels and P235/55R20 tires   |   |    |     |     |         | S        |           |            |                | S               |
| Front grille in material black with silver paint surround  | S | S  | S   |     |         |          | S         | S          |                |                 |
| Aggressive mesh front grille with sporty front bumper and lower spoiler  |   |    |     | S   |         |          |           |            |                |                 |
| Front grille in black paint with chrome-plated surround  |   |    |     |     | S       |          |           |            | S              |                 |
| Front grille in black paint and chrome-plated surround with front lower bumper in silver finish  |   |    |     |     |         | S        |           |            |                | S               |
| Grille shutters  |   |    |     |     |         |          | S         | S          | S              | S               |
| Rear lower bumper in black finish  | S | S  | S   |     |         |          | S         | S          |                |                 |
| Rear lower bumper in dark gray metallic finish   |   |    |     |     | S       |          |           |            | S              |                 |
| Rear lower bumper in gray metallic finish with chrome lower spoiler trim   |   |    |     | S   |         |          |           |            |                |                 |
| Rear lower bumper in silver finish   |   |    |     |     |         | S        |           |            |                | S               |
| Color-keyed side rocker panels and lower molding   | S | S  | S   |     | S       | S        | S         | S          | S              | S               |
| Color-keyed side rocker panels with chrome lower trim  |   |    |     | S   |         |          |           |            |                |                 |
| Color-keyed outside door handles   | S | S  | S   | S   | S       | S        | S         | S          | S              | S               |
| Rear spoiler with LED center high-mount stop light   | S | S  | S   | S   | S       | S        | S         | S          | S              | S               |
| A-pillar in black low-gloss film   | S | S  | S   |     |         |          | S         | S          |                |                 |
| A-pillar in black high-gloss film  |   |    |     | S   | S       | S        |           |            | S              | S               |
| Power tilt/slide moonroof with sunshade and one-touch open/close with jam protection   |   |    | S   | S   | S       |          |           | S          | S              |                 |
| Power Panoramic View Moonroof with sunshade and one-touch open/close with jam protection   |   |    |     |     |         | S        |           |            |                | S               |
| Height-adjustable power liftgate with jam protection   |   | S  | S   | S   |         |          | S         | S          |                |                 |
| Height-adjustable hands-free power liftgate with jam protection <sup>6</sup>   |   |    |     |     | S       | S        |           |            | S              | S               |

See numbered footnotes in Disclosures section.



# HIGHLANDER FEATURES

S = Standard O = Optional P = Available as part of a package

| Exterior (continued)   | L | LE | XLE | XSE | Limited | Platinum | Hybrid LE | Hybrid XLE | Hybrid Limited | Hybrid Platinum |
|--|---|----|-----|-----|---------|----------|-----------|------------|----------------|-----------------|
| Roof rails   |   |    | S   |     | S       | S        |           | S          | S              | S               |
| Black roof rails   |   |    |     | S   |         |          |           |            |                |                 |
| Front and rear mudguards   | O | O  | O   | O   | O       | O        | O         | O          | O              | O               |
| Rear bumper scuff plate  |   |    |     |     |         | S        |           |            |                | S               |
| Twin-tip exhaust   |   |    |     | S   |         |          |           |            |                |                 |
| <b>Interior</b>  |   |    |     |     |         |          |           |            |                |                 |
| Power windows with auto up/down in all positions and jam protection  | S | S  | S   | S   | S       | S        | S         | S          | S              | S               |
| Three-zone automatic climate control with air filter, separate second-row control panel, individual temperature settings for driver, front passenger and rear-seat passengers, and second- and third-row vents   | S | S  | S   | S   | S       | S        | S         | S          | S              | S               |
| Black interior door handles  | S | S  |     |     |         |          | S         |            |                |                 |
| Chrome interior door handles   |   |    | S   | S   | S       | S        |           | S          | S              | S               |
| Power door locks with shift-linked automatic lock/unlock feature   | S | S  | S   | S   | S       | S        | S         | S          | S              | S               |
| Soft-touch roll-top center console (15L) with removable utility tray   | S | S  | S   | S   | S       | S        | S         | S          | S              | S               |
| Qi-compatible wireless smartphone charging <sup>4</sup> with charge indicator light  |   |    | S   | S   | S       | S        |           | S          | S              | S               |
| Soft-touch in-dash split-level shelf   | S | S  | S   | S   | S       | S        | S         | S          | S              | S               |
| Eight cup holders and four bottle holders  | S | S  | S   | S   | S       | S        | S         | S          | S              | S               |
| Dual sun visors with sliding function and illuminated vanity mirrors   | S | S  | S   | S   | S       | S        | S         | S          | S              | S               |
| Overhead console with conversation mirror, sunglasses storage and maplights  | S | S  | S   | S   | S       | S        | S         | S          | S              | S               |
| Day/night rearview mirror  | S | S  |     |     |         |          | S         |            |                |                 |
| Auto-dimming rearview mirror with HomeLink <sup>®37</sup> universal transceiver  |   |    | S   | S   | S       |          |           | S          | S              |                 |
| Digital rearview mirror with HomeLink <sup>®37</sup> universal transceiver   |   |    |     |     |         | S        |           |            |                | S               |
| Fabric-trimmed front- and second-row seats; 8-way power-adjustable driver's seat; 4-way manual-adjustable front passenger seat   | S | S  |     |     |         |          | S         |            |                |                 |
| SofTex <sup>®</sup> -trimmed <sup>38</sup> front- and second-row seats; heated front seats; 10-way power-adjustable driver's seat including power lumbar support; 4-way power-adjustable front passenger seat  |   |    | S   | S   |         |          |           | S          |                |                 |
| Leather-trimmed front- and second-row seats; heated front seats; 10-way power-adjustable driver's seat including power lumbar support; 4-way power-adjustable front passenger seat   |   |    |     |     | O       |          |           |            |                |                 |
| Leather-trimmed front- and second-row seats; heated and ventilated front seats; 10-way power-adjustable driver's seat including power lumbar support; 4-way power-adjustable front passenger seat; seat memory function  |   |    |     |     |         | S        | S         |            | S              | S               |
| 8-passenger seating with 60/40 split, sliding and reclining fold-flat second-row bench seats; 60/40 split, fold-flat third-row seats with sliding headrests and recline function   | S | S  | O   |     | O       |          | S         | O          | O              |                 |
| 7-passenger seating with second-row fold-down captain's chairs and fold-down inboard armrests, adjustable headrests and two cup holders mounted on the floor; and 60/40 split, fold-flat third-row seats with sliding headrests and recline function   |   |    | S   | S   | S       | S        |           | S          | S              | S               |
| Heated second row  |   |    |     |     |         | S        |           |            |                | S               |
| Second-row sunshades   |   |    | S   | S   | S       | S        |           | S          | S              | S               |
| Tilt/telescopic steering wheel with audio, Multi-Information Display (MID), Bluetooth <sup>®46</sup> hands-free phone, voice-command, Dynamic Radar Cruise Control (DRCC), <sup>26</sup> Lane Departure Alert (LDA), <sup>47</sup> Lane Steering Assist (LSA) and multimedia information controls  | S |    |     |     |         |          |           |            |                |                 |
| Leather-trimmed shift knob and tilt/telescopic leather steering wheel with audio, Multi-Information Display (MID), Bluetooth <sup>®46</sup> hands-free phone, voice-command, Dynamic Radar Cruise Control (DRCC), <sup>26</sup> Lane Departure Alert (LDA), <sup>47</sup> Lane Steering Assist (LSA) and multimedia information controls |   | S  | S   | S   | S       | S        | S         | S          | S              | S               |
| Heated steering wheel  |   |    |     |     | S       | S        |           |            | S              | S               |

See numbered footnotes in Disclosures section.

# HIGHLANDER FEATURES

S = Standard O = Optional P = Available as part of a package

| Interior (continued)  | L | LE | XLE | XSE | Limited | Platinum | Hybrid LE | Hybrid XLE | Hybrid Limited | Hybrid Platinum |
|---|---|----|-----|-----|---------|----------|-----------|------------|----------------|-----------------|
| 4.2-in. color LCD Multi-Information Display (MID) in meter cluster with odometer, current/average fuel economy, cruising range, average speed, AWD torque distribution (AWD models only), cruise control guide, audio status, hands-free incoming call notices, telephone information, ECO Driving Indicator, and energy monitor (HV models only) | S | S  |     |     |         |          | S         |            |                |                 |
| 7-in. color LCD Multi-Information Display (MID) in meter cluster with odometer, current/average fuel economy, cruising range, average speed, AWD torque distribution (AWD models only), cruise control guide, audio status, hands-free incoming call notices, telephone information, ECO Driving Indicator, and energy monitor (HV models only)   |   |    | S   | S   | S       | S        |           | S          | S              | S               |
| 10-in. color Head-Up Display (HUD) with speedometer and Road Sign Assist (RSA), <sup>30</sup> navigation <sup>48</sup> and Hybrid System Indicator (hybrid models only)   |   |    |     |     |         | S        |           |            |                | S               |
| Integrated backup camera <sup>49</sup> with projected path  | S | S  | S   | S   |         |          | S         | S          |                |                 |
| Integrated backup camera <sup>49</sup> with dynamic gridlines   |   |    |     |     | S       |          |           |            | S              |                 |
| Bird's Eye View Camera <sup>42</sup> with dynamic gridlines — includes Perimeter Scan, 360-degree Overhead View in low-speed drive and reverse, and Curb View   |   |    |     |     | O       | S        |           |            | O              | S               |
| Five USB ports <sup>31</sup> and two 12V outlets <sup>32</sup>  | S | S  | S   | S   | S       | S        | S         | S          | S              | S               |
| One 120V outlet <sup>41</sup> (100W) located on the bottom rear of the center console   |   |    |     |     | S       | S        |           |            |                |                 |
| Two 120V outlets <sup>3</sup> (1500W shared) located on the bottom rear of center console and in the luggage area   |   |    |     |     |         |          |           |            | S              | S               |
| Ambient interior lighting   |   |    |     | S   | S       | S        |           |            | S              | S               |
| Painted door, console and dashboard trim  | S | S  | S   |     |         |          | S         | S          |                |                 |
| Ornamental dash trim and faux wood door trim  |   |    |     |     | S       | S        |           |            | S              | S               |
| Front doorsill metal scuff plate  |   |    |     |     | S       | S        |           |            | S              | S               |
| Six tie-down cargo hooks  | S | S  | S   | S   | S       | S        | S         | S          | S              | S               |
| Cargo area tonneau cover  |   |    |     |     | S       | S        |           |            | S              | S               |
| Front- and second-row-seat reading lights   | S | S  | S   | S   | S       | S        | S         | S          | S              | S               |
| Digital clock   | S | S  | S   | S   | S       | S        | S         | S          | S              | S               |
| Driver Easy Speak — utilizes microphone in overhead console to amplify the driver's voice and broadcast it through rear speakers  |   |    | O   | O   | S       | S        |           | O          | S              | S               |

## Audio Multimedia

|  |   |   |   |   |  |  |   |   |  |  |
|--|---|---|---|---|--|--|---|---|--|--|
| Audio — includes 8.0-in. touchscreen, six speakers, Android Auto <sup>TM19</sup> & Apple CarPlay <sup>®16</sup> & Amazon Alexa <sup>22</sup> compatible, USB media port, <sup>31</sup> four USB charge ports, <sup>31</sup> hands-free phone capability and music streaming <sup>46</sup> via Bluetooth <sup>®46</sup> wireless technology, SiriusXM <sup>®20</sup> with 3-month All Access trial subscription. <sup>21</sup> See <a href="http://toyota.com/audio-multimedia">toyota.com/audio-multimedia</a> for details. Connected Services <sup>9</sup> — Safety Connect <sup>®10</sup> with 1-year trial, <sup>50</sup> Wi-Fi Connect <sup>14</sup> with up to 2 GB within 3-month trial. <sup>51</sup> See <a href="http://toyota.com/connected-services">toyota.com/connected-services</a> for details.   | S |   |   |   |  |  |   |   |  |  |
| Audio Plus — includes 8.0-in. touchscreen, six speakers, USB media port, <sup>31</sup> four USB charge ports, <sup>31</sup> hands-free phone capability and music streaming <sup>46</sup> via Bluetooth <sup>®46</sup> wireless technology, Android Auto <sup>TM19</sup> & Apple CarPlay <sup>®16</sup> & Amazon Alexa <sup>22</sup> compatible, SiriusXM <sup>®20</sup> with 3-month All Access trial subscription. <sup>21</sup> See <a href="http://toyota.com/audio-multimedia">toyota.com/audio-multimedia</a> for details. Connected Services <sup>9</sup> — Safety Connect <sup>®10</sup> with 1-year trial, <sup>50</sup> Service Connect <sup>12</sup> with 10-year trial, <sup>52</sup> Remote Connect <sup>13</sup> with 1-year trial, <sup>53</sup> Wi-Fi Connect <sup>14</sup> with up to 2 GB within 3-month trial. <sup>51</sup> See <a href="http://toyota.com/connected-services">toyota.com/connected-services</a> for details.  |   | S | S | S |  |  | S | S |  |  |
| Premium Audio, Dynamic Navigation <sup>39</sup> with 3-year trial <sup>40</sup> — includes 8.0-in. touchscreen, six speakers, USB media port, <sup>31</sup> four USB charge ports, <sup>31</sup> hands-free phone capability and music streaming <sup>46</sup> via Bluetooth <sup>®46</sup> wireless technology, Android Auto <sup>TM19</sup> & Apple CarPlay <sup>®16</sup> & Amazon Alexa <sup>22</sup> compatible, SiriusXM <sup>®20</sup> with 3-month All Access trial subscription. <sup>21</sup> See <a href="http://toyota.com/audio-multimedia">toyota.com/audio-multimedia</a> for details. Connected Services <sup>9</sup> — Safety Connect <sup>®10</sup> with 1-year trial, <sup>50</sup> Service Connect <sup>12</sup> with 10-year trial, <sup>52</sup> Remote Connect <sup>13</sup> with 1-year trial, <sup>53</sup> Wi-Fi Connect <sup>14</sup> with up to 2 GB within 3-month trial, <sup>51</sup> Destination Assist <sup>15</sup> with 1-year trial. <sup>54</sup> See <a href="http://toyota.com/connected-services">toyota.com/connected-services</a> for details. |   |   |   |   |  |  |   | O |  |  |

# HIGHLANDER FEATURES

S = Standard O = Optional P = Available as part of a package

## Audio Multimedia (continued)

|   | L | LE | XLE | XSE | Limited | Platinum | Hybrid LE | Hybrid XLE | Hybrid Limited | Hybrid Platinum |
|---|---|----|-----|-----|---------|----------|-----------|------------|----------------|-----------------|
| Premium Audio, Dynamic Navigation <sup>39</sup> with 3-year trial <sup>40</sup> — includes 8.0-in. touchscreen, 11 JBL <sup>®23</sup> speakers including subwoofer and amplifier, USB media port, <sup>31</sup> four USB charge ports, <sup>31</sup> hands-free phone capability and music streaming <sup>46</sup> via Bluetooth <sup>®46</sup> wireless technology, Android Auto <sup>™19</sup> & Apple CarPlay <sup>®16</sup> & Amazon Alexa <sup>22</sup> compatible, SiriusXM <sup>®20</sup> with 3-month All Access trial subscription. <sup>21</sup> See <a href="http://toyota.com/audio-multimedia">toyota.com/audio-multimedia</a> for details.  |   |    |     |     |         |          |           |            |                |                 |
| Connected Services <sup>9</sup> — Safety Connect <sup>®10</sup> with 1-year trial, <sup>50</sup> Service Connect <sup>12</sup> with 10-year trial, <sup>52</sup> Remote Connect <sup>13</sup> with 1-year trial, <sup>53</sup> Wi-Fi Connect <sup>14</sup> with up to 2 GB within 3-month trial, <sup>51</sup> Destination Assist <sup>15</sup> with 1-year trial. <sup>54</sup> See <a href="http://toyota.com/connected-services">toyota.com/connected-services</a> for details.  |   |    |     | O   | S       |          |           |            | S              |                 |
| Premium Audio, Dynamic Navigation <sup>39</sup> with 3-year trial <sup>40</sup> — includes 12.3-in. touchscreen, 11 JBL <sup>®23</sup> speakers including subwoofer and amplifier, USB media port, <sup>31</sup> four USB charge ports, <sup>31</sup> hands-free phone capability and music streaming <sup>46</sup> via Bluetooth <sup>®46</sup> wireless technology, Android Auto <sup>™19</sup> & Apple CarPlay <sup>®16</sup> & Amazon Alexa <sup>22</sup> compatible, SiriusXM <sup>®20</sup> with 3-month All Access trial subscription. <sup>21</sup> See <a href="http://toyota.com/audio-multimedia">toyota.com/audio-multimedia</a> for details. |   |    |     |     |         |          |           |            |                |                 |
| Connected Services <sup>9</sup> — Safety Connect <sup>®10</sup> with 1-year trial, <sup>50</sup> Service Connect <sup>12</sup> with 10-year trial, <sup>52</sup> Remote Connect <sup>13</sup> with 1-year trial, <sup>53</sup> Wi-Fi Connect <sup>14</sup> with up to 2 GB within 3-month trial, <sup>51</sup> Destination Assist <sup>15</sup> with 1-year trial. <sup>54</sup> See <a href="http://toyota.com/connected-services">toyota.com/connected-services</a> for details.  |   |    |     |     | O       | S        |           |            | O              | S               |

## Safety and Convenience

|   |   |   |   |   |   |   |   |   |   |   |
|---|---|---|---|---|---|---|---|---|---|---|
| Toyota Safety Sense <sup>™</sup> 2.5+ (TSS 2.5+) <sup>24</sup>  | S | S | S | S | S | S | S | S | S | S |
| <b>STAR SAFETY SYSTEM</b> ™ Star Safety System <sup>™</sup> — includes Enhanced Vehicle Stability Control (VSC), <sup>55</sup> Traction Control (TRAC), Anti-lock Brake System (ABS), Electronic Brake-force Distribution (EBD), Brake Assist (BA) <sup>56</sup> and Smart Stop Technology <sup>®</sup> (SST) <sup>57</sup>   | S | S | S | S | S | S |   |   |   |   |
| Star Safety System <sup>™</sup> — includes Electronically Controlled Braking (ECB), Vehicle Dynamics Integrated Management (VDIM), <sup>58</sup> Enhanced Vehicle Stability Control (VSC), <sup>55</sup> Traction Control (TRAC), Anti-lock Brake System (ABS), Electronic Brake-force Distribution (EBD), Brake Assist (BA) <sup>56</sup> and Smart Stop Technology <sup>®</sup> (SST) <sup>57</sup> |   |   |   |   |   |   | S | S | S | S |
| Eight airbags <sup>34</sup> (driver airbag, front passenger airbag, knee airbag (driver), seat cushion airbag (passenger), front side airbags, curtain shield airbags)  | S | S | S | S | S | S | S | S | S | S |
| Safety Connect <sup>®10</sup> — includes Emergency Assistance, Stolen Vehicle Locator, <sup>59</sup> Roadside Assistance <sup>11</sup> and Automatic Collision Notification. Available by subscription. Complimentary one-year trial subscription. <sup>50</sup>  | S | S | S | S | S | S | S | S | S | S |
| 3-point seatbelts for all seating positions; driver's-side Emergency Locking Retractor (ELR) and Automatic/Emergency Locking Retractor (ALR/ELR) on all passenger seatbelts   | S | S | S | S | S | S | S | S | S | S |
| LATCH (Lower Anchors and Tethers for CHildren) includes lower anchors and tethers on outboard second-row seats and tether anchor on middle of second- and third-row seats   | S | S | S | S | S | S | S | S | S | S |
| Child-protector rear door locks   | S | S | S | S | S | S | S | S | S | S |
| Driver and front passenger seatbelt warning   | S | S | S | S | S | S | S | S | S | S |
| Rear passenger seatbelt reminder  | S | S | S | S | S | S | S | S | S | S |
| Rear-seat reminder  | S | S | S | S | S | S | S | S | S | S |
| Adjustable front seatbelt shoulder anchors and driver and front passenger seatbelt pretensioners with force limiters  | S | S | S | S | S | S | S | S | S | S |
| Downhill Assist Control (DAC) <sup>60</sup>   | O | O | O | O | O | O |   |   |   |   |
| Engine immobilizer <sup>61</sup>  | S |   |   |   |   |   |   |   |   |   |
| Engine immobilizer <sup>61</sup> alarm  |   | S | S | S | S | S | S | S | S | S |
| Tire Pressure Monitor System (TPMS) <sup>62</sup> (individual tires)  | S | S | S | S | S | S | S | S | S | S |
| Snow Mode + Drive Mode Select (ECO, Normal, Sport)  | S | S | S | S | S | S |   |   |   |   |
| Snow Mode + Drive Mode Select (ECO, Normal, Sport) + Multi-Terrain Select (Mud/Sand, Rock/Dirt, Normal)   | O | O | O | O | O | O |   |   |   |   |
| Hill Start Assist Control (HAC) <sup>63</sup>   | S | S | S | S | S | S | S | S | S | S |
| Trail Mode  |   |   |   |   |   |   | O | O | O | O |
| Front and Rear Parking Assist with Automatic Braking (PA w/AB) <sup>64</sup>  |   |   |   |   | S | S |   |   | S | S |
| Dynamic Torque Vectoring AWD with Driveline Disconnect; Multi-Terrain Select with dial  |   |   |   | O | O | O |   |   |   |   |
| Predictive Fuel-Efficient Drive <sup>65</sup>   |   |   |   |   |   |   |   | O | S | S |

See numbered footnotes in Disclosures section.

# HIGHLANDER SPECIFICATIONS

S = Standard O = Optional P = Available as part of a package

| Mechanical/Performance   | L    | LE   | XLE  | XSE  | Limited | Platinum | Hybrid LE | Hybrid XLE | Hybrid Limited | Hybrid Platinum |
|--|------|------|------|------|---------|----------|-----------|------------|----------------|-----------------|
| <b>ENGINE</b>  |      |      |      |      |         |          |           |            |                |                 |
| Gasoline engine — 3.5-Liter V6 Double Overhead Cam (DOHC) 24-Valve D-4S Injection Atkinson Cycle-capable Engine with Dual Variable Valve Timing with intelligence (VVT-i) and Stop and Start Engine System (S&S); <sup>66</sup> 295 hp @ 6600 rpm, 263 lb.-ft. @ 4700 rpm                            | S    | S    | S    | S    | S       | S        |           |            |                |                 |
| Hybrid powertrain — 2.5-Liter L4HV Double Overhead Cam (DOHC) 16-Valve D-4S Injection Atkinson Cycle Engine with Dual VVT-iE (Variable Valve Timing-intelligent intake controlled by electric motor); combined net 243 hp, includes combustion engine with 186 hp @ 6000 rpm; 175 lb.-ft. @ 4400 rpm |      |      |      |      |         |          | S         | S          | S              | S               |
| <b>EMISSION RATING</b>   |      |      |      |      |         |          |           |            |                |                 |
| Ultra Low Emission Vehicle 70 (ULEV 70)  | S    | S    | S    | S    | S       | S        |           |            |                |                 |
| Super Ultra Low Emission Vehicle 30 (SULEV 30) <sup>67</sup>   |      |      |      |      |         |          | S         | S          | S              | S               |
| <b>ELECTRIC MOTORS</b>   |      |      |      |      |         |          |           |            |                |                 |
| Permanent magnet synchronous motors (two front, FWD)   |      |      |      |      |         |          | S         | S          | S              | S               |
| Permanent magnet synchronous motors (two front, one rear, AWD)   |      |      |      |      |         |          | O         | O          | O              | O               |
| <b>TRACTION BATTERY</b>  |      |      |      |      |         |          |           |            |                |                 |
| Battery type: sealed Nickel-Metal Hydride (Ni-MH)  |      |      |      |      |         |          | S         | S          | S              | S               |
| <b>TRANSMISSION</b>  |      |      |      |      |         |          |           |            |                |                 |
| Direct Shift-8AT 8-speed Electronically Controlled automatic Transmission  | S    | S    | S    | S    | S       | S        |           |            |                |                 |
| Electronically controlled Continuously Variable Transmission (ECVT) with sequential shift mode   |      |      |      |      |         |          | S         | S          | S              | S               |
| <b>DRIVETRAIN</b>  |      |      |      |      |         |          |           |            |                |                 |
| Front-Wheel Drive (FWD)  | S    | S    | S    | S    | S       | S        | S         | S          | S              | S               |
| All-Wheel Drive (AWD)  | O    | O    | O    |      |         |          |           |            |                |                 |
| Dynamic Torque Vectoring AWD   |      |      |      | O    | O       | O        |           |            |                |                 |
| Electronic On-Demand AWD system  |      |      |      |      |         |          | O         | O          | O              | O               |
| <b>BODY</b>  |      |      |      |      |         |          |           |            |                |                 |
| Reinforced unibody   | S    | S    | S    | S    | S       | S        | S         | S          | S              | S               |
| <b>SUSPENSION</b>  |      |      |      |      |         |          |           |            |                |                 |
| Independent MacPherson strut front suspension with stabilizer bar; trailing-wishbone suspension  | S    | S    | S    |      | S       | S        | S         | S          | S              | S               |
| Sport-tuned independent MacPherson strut front suspension with stabilizer bar; trailing-wishbone suspension  |      |      |      | S    |         |          |           |            |                |                 |
| <b>STEERING</b>  |      |      |      |      |         |          |           |            |                |                 |
| Electric Power Steering (EPS); power-assisted rack-and-pinion  | S    | S    | S    | S    | S       | S        | S         | S          | S              | S               |
| Turning radius (ft.)   | 18.7 | 18.7 | 18.7 | 18.7 | 18.7    | 18.7     | 18.7      | 18.7       | 18.7           | 18.7            |
| Turning circle diameter (ft.)  | 37.4 | 37.4 | 37.4 | 37.4 | 37.4    | 37.4     | 37.4      | 37.4       | 37.4           | 37.4            |
| <b>BRAKES</b>  |      |      |      |      |         |          |           |            |                |                 |
| Power-assisted ventilated 13.3-in. front disc brakes; solid 13.3-in. rear disc brakes and Star Safety System™  | S    | S    | S    | S    | S       | S        |           |            |                |                 |
| Power-assisted ventilated 13.3-in. front disc brakes; solid 13.3-in. rear disc brakes with Electronically Controlled Braking (ECB) system, integrated regenerative braking and Star Safety System™   |      |      |      |      |         |          | S         | S          | S              | S               |

# HIGHLANDER SPECIFICATIONS

S = Standard O = Optional P = Available as part of a package

| Dimensions   | L              | LE             | XLE            | XSE            | Limited        | Platinum       | Hybrid LE      | Hybrid XLE     | Hybrid Limited | Hybrid Platinum |
|--|----------------|----------------|----------------|----------------|----------------|----------------|----------------|----------------|----------------|-----------------|
| <b>EXTERIOR (in.)</b>  |                |                |                |                |                |                |                |                |                |                 |
| Overall length/width   | 194.9/76.0     | 194.9/76.0     | 194.9/76.0     | 197.4/76.0     | 194.9/76.0     | 194.9/76.0     | 194.9/76.0     | 194.9/76.0     | 194.9/76.0     | 194.9/76.0      |
| Unloaded height (no antenna)   | 68.1           | 68.1           | 68.1           | 68.1           | 68.1           | 68.1           | 68.1           | 68.1           | 68.1           | 68.1            |
| Wheelbase  | 112.2          | 112.2          | 112.2          | 112.2          | 112.2          | 112.2          | 112.2          | 112.2          | 112.2          | 112.2           |
| Track (front/rear)   | 65.3/65.4      | 65.3/65.4      | 65.3/65.4      | 65.3/65.4      | 65.3/65.4      | 65.3/65.4      | 65.3/65.4      | 65.3/65.4      | 65.3/65.4      | 65.3/65.4       |
| <b>INTERIOR (front/second-row/third-row seats) (in.)</b>                       |                |                |                |                |                |                |                |                |                |                 |
| Head room  | 41.2/39.4/36.1 | 41.2/39.4/36.1 | 39.6/39.4/36.1 | 39.6/39.4/36.1 | 39.6/39.4/36.1 | 38.4/37.1/36.1 | 41.2/39.4/36.1 | 39.6/39.4/36.1 | 39.6/39.4/36.1 | 38.4/37.1/36.1  |
| Shoulder room (with shade)   |                |                | 59.0/58.4/55.0 | 59.0/58.4/55.0 | 59.0/58.4/55.0 | 59.0/58.4/55.0 |                | 59.0/58.4/55.0 | 59.0/58.4/55.0 | 59.0/58.4/55.0  |
| Shoulder room (w/o shade)  | 59.0/58.7/55.0 | 59.0/58.7/55.0 |                |                |                |                | 59.0/58.7/55.0 |                |                |                 |
| Hip room   | 57.2/57.0/45.6 | 57.2/57.0/45.6 | 57.2/57.0/45.6 | 57.2/57.0/45.6 | 57.2/57.0/45.6 | 57.2/57.0/45.6 | 57.2/57.0/45.6 | 57.2/57.0/45.6 | 57.2/57.0/45.6 | 57.2/57.0/45.6  |
| Leg room   | 42.0/41.0/27.7 | 42.0/41.0/27.7 | 42.0/41.0/27.7 | 42.0/41.0/27.7 | 42.0/41.0/27.7 | 42.0/41.0/27.7 | 42.0/41.0/27.7 | 42.0/41.0/27.7 | 42.0/41.0/27.7 | 42.0/41.0/27.7  |
| <b>OFF-HIGHWAY</b>   |                |                |                |                |                |                |                |                |                |                 |
| Approach/departure angle (degrees)   | 18.1/23        | 18.1/23        | 18.1/23        | 16.9/21.1      | 18.1/23        | 18.1/23        | 18.1/22.7      | 18.1/22.7      | 18.1/22.7      | 18.1/22.7       |
| Ramp breakover angle   | 16.7           | 16.7           | 16.7           | 16.7           | 16.7           | 16.7           | 16.7           | 16.7           | 16.7           | 16.7            |
| Ground clearance (in.)   | 8              | 8              | 8              | 8              | 8              | 8              | 8              | 8              | 8              | 8               |
| <b>Weights/Capacities</b>  |                |                |                |                |                |                |                |                |                |                 |
| Curb weight (lb.) (standard seating config.)                                   | 4,145          | 4,145          | 4,195          | 4,205          | 4,260          | 4,260          | 4,330          | 4,365          | 4,430          | 4,430           |
| Gross Vehicle Weight Rating (GVWR) (lb.) (standard seating config.)            | 5,830          | 5,830          | 5,830          | 5,830          | 5,830          | 5,830          | 5,960          | 5,960          | 5,960          | 5,960           |
| EPA passenger volume (cu. ft.) without moonroof, front/second/third row        | 141.3          | 141.3          |                |                |                |                | 141.3          |                |                |                 |
| EPA passenger volume (cu. ft.) with moonroof, first/second/third row           |                |                | 139.1          | 139.1          | 139.1          |                |                | 139.1          | 139.1          |                 |
| EPA passenger volume (cu. ft.) with panoramic moonroof, first/second/third row |                |                |                |                |                | 136.1          |                |                |                | 136.1           |
| Cargo volume (cu. ft.) <sup>5</sup> behind front/second-row/third-row seats    | 84.3/48.4/16.0 | 84.3/48.4/16.0 | 84.3/48.4/16.0 | 84.3/48.4/16.0 | 84.3/48.4/16.0 | 84.3/48.4/16.0 | 84.3/48.4/16.0 | 84.3/48.4/16.0 | 84.3/48.4/16.0 | 84.3/48.4/16.0  |
| Fuel tank (gal.)   | 17.9           | 17.9           | 17.9           | 17.9           | 17.9           | 17.9           | 17.1           | 17.1           | 17.1           | 17.1            |
| Seating capacity (standard/optional)   | 8              | 8              | 7/8            | 7              | 7/8            | 7              | 8              | 7/8            | 7/8            | 7               |
| <b>TOWING</b>  |                |                |                |                |                |                |                |                |                |                 |
| Towing capacity (lb.) <sup>2</sup>   | 5,000          | 5,000          | 5,000          | 5,000          | 5,000          | 5,000          | 3,500          | 3,500          | 3,500          | 3,500           |
| Trailer-Sway Control (TSC) <sup>68</sup>                                       | S              | S              | S              | S              | S              | S              | S              | S              | S              | S               |
| <b>TIRES</b>   |                |                |                |                |                |                |                |                |                |                 |
| All-Season tires   | S              | S              | S              | S              | S              | S              | S              | S              | S              | S               |
| Temporary spare tire   | S              | S              | S              | S              | S              | S              | S              | S              | S              | S               |
| <b>Mileage Estimates (mpg city/highway/combined)<sup>3</sup></b>               |                |                |                |                |                |                |                |                |                |                 |
| Hybrid FWD   |                |                |                |                |                |                | 36/35/36       | 36/35/36       | 36/35/36       | 36/35/36        |
| V6 FWD   | 21/29/24       | 21/29/24       | 21/29/24       | 21/29/24       | 21/29/24       | 21/29/24       |                |                |                |                 |

## DISCLOSURES

1. Extra-cost color. 2. Before towing, confirm your vehicle and trailer are compatible, hooked up and loaded properly and that you have any necessary additional equipment. Do not exceed any Weight Ratings and follow all instructions in your *Owner's Manual*. The maximum you can tow depends on base curb weight plus the total weight of any cargo, occupants, and added vehicle equipment. "Added vehicle equipment" includes additional standard/optional equipment and accessories added by the manufacturer, dealers, and/or vehicle owners. The only way to be certain of your vehicle's exact curb weight is to weigh your vehicle without passengers or cargo. [Calculated with the new SAE J2807 method.] Installation of a tow hitch receiver or other accessories located near the rear bumper or side-door kick sensors may require disabling or removing the kick sensor, and the sensor operation setting in your vehicle should be turned off. See *Owner's Manual* for limitations. 3. EPA-estimated 21 city/29 hwy/24 combined mpg for 2021 Highlander; 20 city/27 hwy/23 combined for 2021 Highlander AWD; 36 city/35 hwy/36 combined mpg for 2021 Highlander Hybrid. Use for comparison purposes only. Your mileage will vary for many reasons, including your vehicle's condition and how/where you drive. See [www.fueleconomy.gov](http://www.fueleconomy.gov). 4. Qi wireless charging may not be compatible with all mobile phones, MP3/WMA players and like models. When using the wireless charging system, avoid placing metal objects between the wireless charger and the mobile device when charging is active. Doing so may cause metal objects to become hot and could cause burns. 5. Cargo and load capacity limited by weight and distribution. Always properly secure cargo and cargo area. 6. Water, weather, dirt, and other conditions may cause the hands-free power liftgate sensor to not operate properly. See *Owner's Manual* for limitations. 7. EV Mode lets you operate solely on battery power at low speeds for short distances and in limited circumstances, such as in a parking garage. Different conditions may prevent or limit usage. See your *Owner's Manual* for limitations and details. 8. Rated for 1500 watts shared between both three-prong outlets. See *Owner's Manual* for additional limitations and details. 9. Connected Services depends on an operative telematics device, a cellular connection, navigation map data, GPS signal strength and other factors outside of Toyota's control, all of which can limit system functionality or availability, including access to response center and emergency support. Service may vary by vehicle and region. Subscription required after trial. Terms of Use apply. Data charges may apply. Apps and services subject to change at any time without notice. See [toyota.com/connected-services](http://toyota.com/connected-services) for details. To learn about Toyota's data collection, use, sharing and retention practices, please visit <https://www.toyota.com/privacyvts/>. Stolen vehicle police report required to use Stolen Vehicle Locator. 10. Safety Connect® depends on an operative telematics device, a cellular connection, GPS signal strength and other factors outside of Toyota's control, all of which can limit system functionality or availability, including access to response center and emergency support. Stolen vehicle police report required to use Stolen Vehicle Locator. Some features may require the Toyota app. Registration required. Service subject to change at any time without notice. Terms of Use apply. Data charges may apply. Service may vary by vehicle and region. See usage precautions and service limitations in *Owner's Manual* and at [toyota.com/connected-services/](http://toyota.com/connected-services/) for additional details. To learn about Toyota's data collection, use, sharing and retention practices, please visit <https://www.toyota.com/privacyvts/>. 11. Requires adequate cellular coverage and GPS signal strength. May not work in all areas. Service may vary by vehicle and region. See Toyota Dealer for details and exclusions. 12. Information provided is based on the last time data was collected from the vehicle and may not be up to date. Service Connect depends on an operative telematics device, a cellular connection, navigation map data, GPS signal strength and other factors outside of Toyota's control, which can limit functionality or availability. Service may vary by vehicle and region. Registration required. Service subject to change at any time without notice. Terms and conditions of subscription service agreement apply. See usage precautions and service limitations in *Owner's Manual* and at [toyota.com/connected-services/](http://toyota.com/connected-services/) for additional details. To learn about Toyota's data collection, use, sharing and retention, please visit <https://www.toyota.com/privacyvts/>. 13. Use only if aware of circumstances surrounding vehicle and it is legal and safe to do so (e.g., do not remotely start engine if vehicle is in an enclosed space or vehicle is occupied by a child). Toyota's Remote Connect depends on an operative telematics device, a cellular connection, GPS signal strength and other factors outside of Toyota's control, which can limit system functionality and availability. Service may vary by vehicle and region. Registration and Toyota app download required. Subscription required after trial. Terms of Use apply. Data charges may apply. Remote start/stop not available on manual-transmission-equipped vehicles. Services subject to change at any time without notice. See usage precautions and service limitations in *Owner's Manual* and at <https://www.toyota.com/connected-services/> for additional details. To learn about Toyota's data collection, use, sharing and retention practices, please visit <https://www.toyota.com/privacyvts/>. 14. Eligible vehicle and wireless service required. Coverage and service not available everywhere. Valid in the contiguous U.S. and Alaska. Do not drive distracted. Go to [att.com/toyota](http://att.com/toyota) for terms and conditions. Data usage and charges apply. Up to 5 devices can be supported using in-vehicle connectivity. Apps and services subject to change at any time without notice. 15. Destination Assist depends on an operative telematics device, a cellular connection, navigation map data and GPS signal strength and other factors outside of Toyota's control, which can limit system ability functionality or availability. Use common sense when relying on this information. Service may vary by vehicle and region. Registration required. Services subject to change at any time without notice. Terms of Use apply. See *Owner's Manual* and [toyota.com/connected-services/](http://toyota.com/connected-services/) for additional limitations and details. To learn about Toyota's data collection, use, sharing and retention practices, please visit <https://www.toyota.com/privacyvts/>. 16. Apps and services are subject to change at any time without notice. Data charges may apply. Apple CarPlay® functionality requires a compatible iPhone® connected with an approved data cable into the USB media port. Apple CarPlay® is a registered trademark of Apple Inc. 17. iPhone® is a registered trademark of Apple Inc. All rights reserved. 18. Android is a trademark of Google LLC. 19. Vehicle user interface is a product of Google and its terms and privacy statement apply. To use Android Auto on your audio display, you'll need an Android Auto compatible vehicle and Android phone. For phone compatibility visit: <https://www.android.com/auto/>. Requires compatible smartphone connected with an approved data cable into the USB media port, and data plan rates apply. Apps and services vary by phone carrier and are subject to change at any time without notice. Android, Android Auto and Waze are trademarks of Google. 20. SiriusXM® audio services require a subscription sold separately by Sirius XM Radio Inc. If you decide to continue service after your trial, the subscription plan you choose will automatically renew thereafter and you will be charged according to your chosen payment method at then-current rates. Fees and taxes apply. To cancel, you must call SiriusXM at 1-866-635-2349. See SiriusXM Customer Agreement for complete terms at [www.siriusxm.com](http://www.siriusxm.com). All fees and programming subject to change. Not all vehicles or devices are capable of receiving all services offered by SiriusXM. Current information and features may not be available in all locations, or on all receivers. ©2021 Sirius XM Radio Inc. SiriusXM and all related marks and logos are trademarks of Sirius XM Radio Inc. 21. SiriusXM All Access trial length and service availability may vary by model, model year or trim. 22. Amazon, Alexa and all related logos are trademarks of Amazon.com, Inc. or its affiliates. Certain functions require adequate signal strength and smartphone technology/connectivity. Not all Amazon Alexa functionality is available for in-vehicle use. See applicable app for details. Download of the Toyota+Alexa app is required to begin in-vehicle use of Alexa. Data charges may apply for certain functions. Apps, prices and services subject to change at any time without notice. To learn more, go to <https://www.toyota.com/audio-multimedia>. To learn more about Toyota's data collection, use, sharing and retention practices, please visit <https://www.toyota.com/privacyvts/>. 23. JBL® is a registered trademark of Harman International Industries, Inc. 24. Toyota Safety Sense™ effectiveness is dependent on many factors including road, weather and vehicle conditions. Drivers are responsible for their own safe driving. Always pay attention to your surroundings and drive safely. See *Owner's Manual* for additional limitations and details. 25. The Pre-Collision System (PCS) with Pedestrian Detection (PD) is designed to determine if impact is imminent and help reduce impact speed and damage in certain frontal collisions involving a vehicle, a pedestrian or a bicyclist. PCS w/PD is not a substitute for safe and attentive driving. System effectiveness depends on many factors, such as speed, size and position of pedestrian or bicyclist and weather, light and road conditions. See *Owner's Manual* for additional limitations and details. 26. Full-Speed Range Dynamic Radar Cruise Control (DRCC) is designed to assist the driver and is not a substitute for safe and attentive driving practices. System effectiveness is dependent on many factors including road, weather and traffic conditions. Vehicles with manual transmission have regular DRCC. See *Owner's Manual* for additional limitations and details. 27. Lane Departure Alert with Steering Assist is designed to read visible lane markers under certain conditions. It provides a visual and audible alert and slight steering force when lane departure is detected. It is not a collision-avoidance system or a substitute for safe and attentive driving. Effectiveness is dependent on many factors including road, weather and vehicle conditions. See *Owner's Manual* for additional limitations and details. 28. Automatic High Beams operate at speeds above 25 mph. Factors such as a dirty windshield, weather, lighting and terrain limit effectiveness, requiring the driver to manually operate the high beams. See *Owner's Manual* for additional limitations and details. 29. Lane Tracing Assist (LTA) is designed to read visible lane markers and detect other vehicles under certain conditions. It is only operational when DRCC is engaged. See *Owner's Manual* for additional limitations and details. 30. Do not rely exclusively on Road Sign Assist (RSA). RSA is a driver support system that utilizes the vehicle's forward-facing camera and navigation system (when data is available) to recognize certain road signs and provide information to the driver via the multi-information display and/or Head-Up Display. Effectiveness is dependent on road, weather, vehicle and sign conditions. Use common sense when using RSA and do not drive distracted. See *Owner's Manual* for additional limitations and details. 31. May not be compatible with all mobile phones, MP3/WMA players and like models. 32. Rated for 100 watts shared between both three-prong outlets. See *Owner's Manual* for additional limitations and details. 33. The Smart Key System may interfere with some pacemakers or cardiac defibrillators. If you have one of these medical devices, please talk to your doctor to see if you should deactivate this system. 34. Airbag systems are Supplemental Restraint Systems and are designed to inflate only under certain conditions and in certain types of severe collisions. To decrease the risk of injury from an inflating airbag, always wear seatbelts and sit upright in the middle of the seat as far back as possible. Do not put objects in front of an airbag or around the seatback. Do not use a rearward-facing child seat in any front passenger seat. See *Owner's Manual* for additional limitations and details. 35. Do not rely exclusively on the Blind Spot Monitor. Always look over your shoulder and use your turn signal. There are limitations to the function, detection and range of the monitor. See *Owner's Manual* for additional limitations and details. 36. Do not rely exclusively on the Rear Cross-Traffic Alert system. Always look over your shoulder and use your mirrors to confirm rear clearance. There are limitations to the function, detection and range of the system. See *Owner's Manual* for additional limitations and details. 37. HomeLink® and the HomeLink® house icon are registered trademarks of Gentex Corporation. 38. SofTex® is a registered trademark of Toyota Motor Sales, U.S.A., Inc. 39. Dynamic Navigation depends on an operative telematics device, a cellular connection, navigation map data and GPS signal strength, and other factors outside of Toyota's control, which can limit system functionality or availability. Services not available in every city or roadway. Use common sense when relying on information provided. Service may vary by vehicle and region. Registration is required. Terms of Use apply. See *Owner's Manual* and <https://toyota.com/connected-services/> for additional limitations and details. To learn about Toyota's data collection, use, sharing and retention practices, please visit <https://www.toyota.com/privacyvts/>. 40. The Dynamic Navigation three-year trial period begins on the original date of purchase or lease of a new vehicle. After the trial period expires, enrollment in paid subscription is required to access the service. 41. Rated for 100 watts for a single three-prong outlet. See *Owner's Manual* for additional limitations and details. 42. The Bird's Eye View Camera does not provide a comprehensive view of the area surrounding the vehicle and you should also look around the vehicle, using mirrors to confirm surrounding clearance. Environmental conditions may limit effectiveness and view may become obscured. See *Owner's Manual* for additional limitations and details. 43. The Adaptive Front-Lighting System helps improve night vision. Situations such as a dirty windshield, rapidly changing light conditions or hilly terrain may limit effectiveness, requiring the driver to manually turn off the system. See *Owner's Manual* for additional limitations and details. 44. Do not overload your vehicle. See *Owner's Manual* for weight limits and restrictions. 45. This floor mat/floor liner was designed specifically for use in your model and model year vehicle and SHOULD NOT be used in any other vehicle. To avoid potential interference with pedal operation, each mat/liner must be secured with its fasteners. Do not install a floor mat/floor liner on top of an existing floor mat/floor liner. 46. The Bluetooth® word mark and logos are registered trademarks owned by Bluetooth SIG, Inc., and any use of such marks by

## DISCLOSURES

Toyota is under license. A compatible Bluetooth®-enabled phone must first be paired. Phone performance depends on software, coverage and carrier. **47.** Lane Departure Alert is designed to read visible lane markers under certain conditions, and provide visual and audible alerts when lane departure is detected. It is not a collision-avoidance system or a substitute for safe and attentive driving. Effectiveness is dependent on many factors including road, weather and vehicle conditions. See *Owner's Manual* for additional limitations and details. **48.** Be sure to obey traffic regulations and maintain awareness of road and traffic conditions at all times. Functionality, availability and accuracy of information provided by the system depends on many factors and service may not be available in every location. Use common sense when relying on information provided. Apps/services vary by phone/carrier. Select apps use large amounts of data; you are responsible for charges. Apps and services subject to change at any time without notice. See [toyota.com/connected-services](http://toyota.com/connected-services) for details. Services and programming subject to change. Updates may be available from your dealer at an additional cost. See *Owner's Manual* for additional limitations and details. **49.** The backup camera does not provide a comprehensive view of the rear area of the vehicle and you should also look around the vehicle, using mirrors to confirm rearward clearance. Environmental conditions may limit effectiveness and view may become obscured. See *Owner's Manual* for additional limitations and details. **50.** The Safety Connect® trial period is at no extra cost and begins on the original date of purchase or lease of a new vehicle. Paid subscription required after trial to access the service. **51.** The Wi-Fi Connect trial period is at no extra cost and begins on the date of activation. After the trial period expires, enrollment in a paid subscription is required to access the service. **52.** The Service Connect trial period is at no extra cost and begins on the original date of purchase or lease of a new vehicle. After the respective trial period expires, enrollment in paid subscription is required to access the service. **53.** The Toyota Remote Connect trial period is at no extra cost and begins on the original date of purchase or lease of a new vehicle. Paid subscription required after trial to access the service. Terms of Use apply. **54.** The Destination Assist trial period is at no extra cost and begins on the original date of purchase or lease of a new vehicle. After the trial period expires, enrollment in a paid subscription is required to access the service. **55.** Vehicle Stability Control is an electronic system designed to help the driver maintain vehicle control under adverse conditions. It is not a substitute for safe and attentive driving practices. Factors including speed, road conditions, weather and driver steering input can all affect whether VSC will be effective in preventing a loss of control. See *Owner's Manual* for additional limitations and details. **56.** Brake Assist is designed to help the driver take advantage of ABS and is not a substitute for safe driving practices. Braking effectiveness also depends on proper vehicle maintenance, tire and road conditions. See *Owner's Manual* for additional limitations and details. **57.** Smart Stop Technology® operates only in the event of certain contemporaneous brake and accelerator pedal applications. When engaged, the system will reduce power to help the brakes bring the vehicle to a stop. Factors including speed, road conditions and driver input can all impact stopping distance. Smart Stop Technology® is not a substitute for safe and attentive driving and does not guarantee instant stopping. See *Owner's Manual* for additional limitations and details. **58.** Vehicle Dynamics Integrated Management (VDIM) is an electronic system designed to help the driver maintain vehicle control under adverse conditions. It is not a substitute for safe and attentive driving practices. Factors including speed, road conditions, weather and driver steering input can all affect whether VDIM will be effective in preventing a loss of control. See *Owner's Manual* for additional limitations and details. **59.** Building and/or parking structures may limit system effectiveness. Stolen vehicle police report required to use Stolen Vehicle Locator. For additional assistance contact the Toyota Customer Experience Center at 1-800-331-4331. **60.** Downhill Assist Control is designed to help driver maintain vehicle control and speed on steep, downhill descents and is not a substitute for safe driving judgment and practices. Factors including speed, grade, surface conditions and driver input can affect the DAC's ability to prevent loss of control. See *Owner's Manual* for additional limitations and details. **61.** The engine immobilizer is a state-of-the-art anti-theft system that is initiated when you insert your key into the ignition switch or bring a Smart Key fob into the vehicle. The engine will only start if the code in the transponder chip inside the key/fob matches the code in the vehicle's immobilizer. The transponder chip is embedded in the key/fob and can be costly to replace. If you lose a key or fob, your Toyota dealer can help or go to [www.aloa.org](http://www.aloa.org) to find a qualified locksmith in your area who can perform high-security key service. **62.** The Tire Pressure Monitor System alerts the driver when tire pressure is critically low. For optimal tire wear and performance, tire pressure should be checked regularly with a gauge; do not rely solely on the monitor system. See *Owner's Manual* for additional limitations and details. **63.** Hill Start Assist Control is designed to help minimize backward rolling on steep ascents. It is not a substitute for safe driving judgment and practices. Factors including speed, grade, surface conditions and driver input can all affect whether HAC will be effective in preventing a loss of control. See *Owner's Manual* for additional limitations and details. **64.** At speeds of 9 mph or less, Front and Rear Parking Assist with Automatic Braking (PA w/AB) is designed to assist drivers in avoiding potential collisions with nearby static objects when the vehicle is in Drive or Reverse and approaching crossing vehicles when the vehicle is in Reverse. Do not overly rely on PA w/AB. Always look around outside the vehicle and use mirrors to confirm clearance. Certain vehicle and environmental factors, including an object or vehicle's shape, size and composition, may affect the system's effectiveness. See *Owner's Manual* for additional limitations and details. **65.** Predictive Fuel-Efficient Drive systems require a destination entry in the navigation system for use. See *Owner's Manual* for details. **66.** Before towing, confirm Stop and Start Engine System is disengaged (V6 gas models only). **67.** Meets Tier 2/Bin 3 Federal emissions standard. **68.** Trailer-Sway Control (TSC) is an electronic system designed to help the driver maintain vehicle control under adverse conditions. It is not a substitute for safe driving practices. Factors including speed, road conditions, weather and driver steering input can all affect whether TSC will be effective in preventing a loss of control. See *Owner's Manual* for additional limitations and details. **69.** Toyota strives to build vehicles to match customer interest and thus they typically are built with popular options and option packages. Not all options/packages are available separately and some may not be available in all regions of the country. If you would prefer a vehicle with no or different options, contact your dealer to check for current availability or the possibility of placing a special order. Color(s) depicted may vary based on multiple factors, including ambient lighting and the format in which it is being viewed (e.g., computer, mobile device or print). **70.** Connected Services by Toyota trials are at no extra cost. All trials begin on the original date of purchase or lease of a new vehicle, with the exception of Wi-Fi for which the trial begins at the time of activation. Paid subscription required after trial in order to continue accessing the respective services. Terms of Use apply.

Toyota strives to build vehicles to match customer interest and thus they typically are built with popular options and option packages. Not all options/packages are available separately and some may not be available in all regions of the country. See [toyota.com](http://toyota.com) for information about options/packages commonly available in your area. If you would prefer a vehicle without any or with different options, contact your dealer to check for current availability or the possibility of placing a special order.

Color(s) depicted may vary based on multiple factors, including ambient lighting and the format in which it is being viewed (e.g., computer, mobile device or print).

Some vehicles are shown with available equipment. Seatbelts should be worn at all times. For details on vehicle specifications, standard features and available equipment in your area, contact your Toyota dealer. A vehicle with particular equipment may not be available at the dealership. Ask your Toyota dealer to help locate a specifically equipped vehicle.

All information presented herein is based on data available at the time of posting, is subject to change without notice and pertains specifically to mainland U.S.A. vehicles only. Vehicles shown may be prototypes, shown using visual effects and/or shown with options. Actual models may vary.



**Mobility**

For Toyota Mobility program details, go to [www.toyota.com/mobility](http://www.toyota.com/mobility) or call the Toyota Brand Engagement Center at 1-800-331-4331