

2020 Tacoma



Let's
Go
Places

Built for the long haul. The 2020 Toyota Tacoma.

Your weekends aren't average, and Tacoma is no average truck. Built from the same tough stuff that's made Toyota trucks legendary, the refreshed 2020 Toyota Tacoma brings more tech, more capability and more confidence to your outdoor adventures. Its available new tech includes panoramic view monitor (PVM),⁵ Multi-terrain Monitor (MTM)⁶ and the smart compatibility of Apple CarPlay,⁸ Android Auto^{TM9} and Amazon Alexa.¹⁰ Best of all, it comes in a package designed to get you to the campsite — and back — without breaking a sweat. So gear up, get in and get ready to start your next epic adventure.



TRD Off-Road Double Cab shown in Cement with available TRD Off-Road Premium Package, Advanced Technology Package⁶⁴ and mudguards. Prototype shown with options.

See footnotes 51 and 59 in Disclosures section for more information on towing and payload. See numbered footnotes in Disclosures section.



2019 Toyota Tacoma — Best Resale Value:
Midsize Pickup Truck According to
Kelley Blue Book's KBB.com⁶⁵



TRD Off-Road Double Cab shown in Cement with available TRD Premium Off-Road Package, Advanced Technology Package⁶⁴ and LED headlights and fog lights. Prototype shown with options.

See footnote 59 in Disclosures section for more information on payload. See numbered footnotes in Disclosures section.

A heritage of toughness.

Tacoma was first introduced in 1995, when it carried forth the unbreakable spirit of icons like Hilux and Land Cruiser. But Tacoma's legacy goes back further than that — much further. In fact, Toyota's been making trucks for over 50 years, so it's no surprise that our trucks have come to define the word "tough." We poured these decades of know-how into each and every Tacoma, which is why it remains one of the best-loved trucks today.



TRD Off-Road Double Cab shown in Cement with available TRD Premium Off-Road Package, Advanced Technology Package⁶⁴ and LED headlights and fog lights. Prototype shown with options.

See footnote 66 in Disclosures section for more information on off-roading. See numbered footnotes in Disclosures section.



Tacoma TRD Off-Road and Tacoma TRD Sport.

One awesome builder. Two awesome trucks. Thanks to the team at Toyota Racing Development (TRD), there's a Tacoma that's sure to fit any lifestyle. Tacoma TRD Off-Road features a locking differential, a TRD-tuned suspension, Bilstein^{®55} shocks and unique Goodyear^{®67} Wrangler^{®68} tires — all of which help smooth out the rough stuff when the trails get wild.⁶⁶ And for those who want to make a statement on paved roads, Tacoma TRD Sport comes standard with new 17-in. alloy wheels, a road-tuned suspension and revised chassis for more direct steering, and smoother on-road handling.

TRD Off-Road Double Cab shown in Cement with available TRD Off-Road Premium Package, Advanced Technology Package⁶⁴ and LED headlights and fog lights.

TRD Sport Double Cab shown in Voodoo Blue with available TRD Sport Premium Package, Advanced Technology Package and LED headlights and fog lights. Prototypes shown with options.

See numbered footnotes in Disclosures section.

Wears dirt like a badge of honor.

Whether freshly waxed, coated in dust or caked in mud, Tacoma's good looks impress from every angle. Up front, its aggressive grille and available hood scoop hint at the power that lies under the hood. The strong profile reveals chiseled lines, muscular fenders and a purposeful off-road stance.⁶⁶ Out back, a tailgate embossed with the Tacoma logo finishes off this truck's athletic look.



AVAILABLE LED HEADLIGHTS

Tacoma's available LED headlights use LED lightbulbs for both the low and high beams, giving you bright, efficient light when you need it. And since they're bolted to the front of Tacoma, you can bet that they look awesome too.



18-IN. ALLOY WHEELS

Tacoma Limited's wild style gets civilized with its standard 18-in. polished alloy wheels.



REAR COMBINATION TAILLIGHTS

Dark bezel taillights give TRD Off-Road and TRD Sport a bold touch. And on Limited, these lights feature clear lenses to add just the right amount of sophistication.

AGGRESSIVE STYLING



TRD Off-Road Double Cab shown in Cement with available TRD Premium Off-Road Package, Advanced Technology Package⁶⁴ and LED headlights and fog lights. Prototype shown with options.

See footnote 66 in Disclosures section for more information on off-roading. See numbered footnotes in Disclosures section.

The power to rule any road. The toughness to rule any trail.

When life gets more epic, so do the toys. Good thing Tacoma's got the brawn to help bring them all with you. When equipped with the available 3.5-liter V6, which includes a standard Tow Package, this truck can tow up to 6800 lbs.⁵¹ And the 4-/7-pin connector sits cleanly inside the three-piece bumper, helping you haul things out without hitting any snags.



3.5L V6 DIRECT-INJECTION ENGINE

High tech meets high performance. Tacoma's available Atkinson-cycle 3.5-liter V6 with direct injection makes the most of every drop of fuel while still delivering a powerful 278 hp.

BILSTEIN^{®55} SHOCKS

Available Bilstein[®] shocks know how to keep their cool under pressure, delivering consistent performance when the going gets rough. Standard on TRD Off-Road, these shocks help soak up the impacts of the trail, thanks to high-performance components and valving tuned specifically for off-road⁶⁶ driving.





TRD Off-Road Double Cab shown in Cement with available TRD Premium Off-Road Package, Advanced Technology Package⁶⁴ and LED headlights and fog lights. Prototype shown with options.

See footnote 51 in Disclosures section for more information on towing. See numbered footnotes in Disclosures section.

Obstacles don't stand a chance.

This is where the rubber meets the dirt. With available equipment like an electronically controlled locking rear differential, Crawl Control (CRAWL)⁴⁹ and Multi-terrain Select (MTS), Tacoma is ready to take on difficult terrain. We're talking the same legendary capability that has given Toyota trucks the reputation they're known for around the world. So when the trail⁶⁶ gets tough, this truck's got the guts to keep going.



CRAWL CONTROL (CRAWL)⁴⁹

When the trail gets challenging, Tacoma TRD Off-Road's Crawl Control (CRAWL) is here to help you conquer your off-road adventure.⁶⁶ This advanced system automatically modulates the throttle and brakes on five low-speed settings so you can keep your focus on navigating difficult terrain.



ELECTRONICALLY CONTROLLED LOCKING REAR DIFFERENTIAL

Tacoma TRD Off-Road's standard electronically controlled locking rear differential distributes engine power evenly to both rear wheels so they move at the same speed, providing more grip in low-traction conditions.



MULTI-TERRAIN SELECT (MTS)

Tacoma TRD Off-Road features Multi-terrain Select (MTS).⁶⁶ With five modes to choose from, this system helps regulate wheelspin by automatically adjusting the engine throttle and traction control. When combined with standard Goodyear^{®67} Wrangler^{®68} tires with tough Kevlar^{®69} construction, MTS helps noticeably to improve traction.

OFF-ROAD CAPABILITY



TRD Off-Road Double Cab shown in Cement with available TRD Premium Off-Road Package, Advanced Technology Package⁶⁴ and LED headlights and fog lights. Prototype shown with options.

See footnote 66 in Disclosures section for more information on off-roading. See numbered footnotes in Disclosures section.



TRD PRO

TRD Pro Double Cab shown in Super White with available Desert Air Intake.⁷⁰ Prototype shown with options.

See footnote 66 in Disclosures section for more information on off-roading. See numbered footnotes in Disclosures section.

TRD PRO SERIES



TRD PRO SERIES SKID PLATE

A unique TRD Pro skid plate comes standard on Tacoma TRD Pro. Constructed from ¼-in.-thick aluminum, this piece of armor helps protect crucial mechanical components underneath the front end.

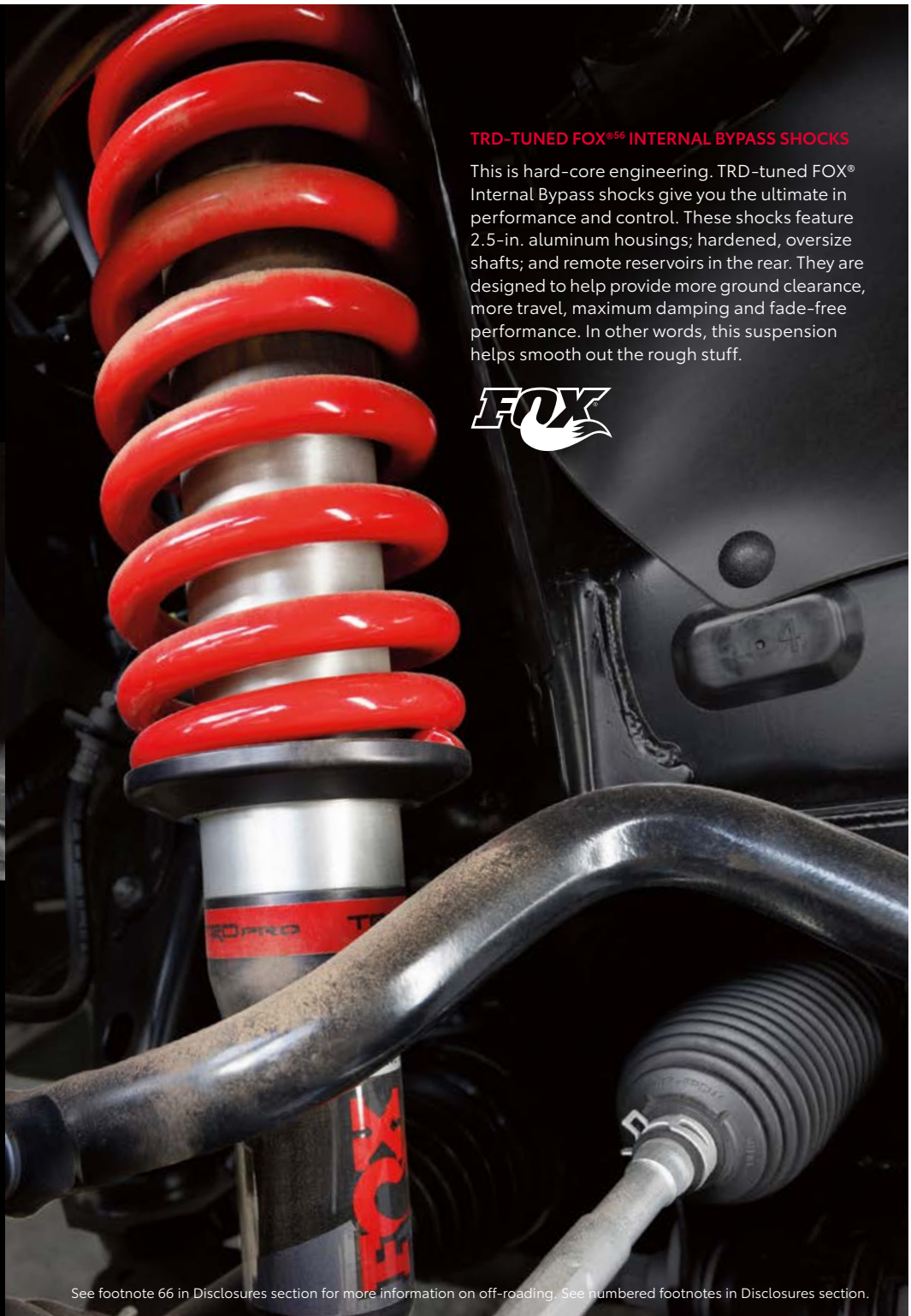
INTERIOR ACCENTS

The interior features unique leather-trimmed seats with the TRD Pro logo embroidered on the headrests, TRD Pro floor mats³² and a leather-wrapped shifter with a TRD shift knob. With its red contrast stitching, embossed TRD logo and bright chrome accent ring, taking control never looked — or felt — so good.



TRD PRO WHEELS

Not just a pretty face, these 16-in. TRD Pro black alloy wheels are constructed to provide an ideal balance of strength and weight savings. Each of these wheels comes wrapped in Goodyear^{®67} Wrangler^{®68} All-Terrain tires for enhanced traction on- and off-road.⁶⁶



TRD-TUNED FOX^{®56} INTERNAL BYPASS SHOCKS

This is hard-core engineering. TRD-tuned FOX[®] Internal Bypass shocks give you the ultimate in performance and control. These shocks feature 2.5-in. aluminum housings; hardened, oversize shafts; and remote reservoirs in the rear. They are designed to help provide more ground clearance, more travel, maximum damping and fade-free performance. In other words, this suspension helps smooth out the rough stuff.



See footnote 66 in Disclosures section for more information on off-roading. See numbered footnotes in Disclosures section.



TRD PRO

Leaves limits in its dust.

Designed by the gurus at Toyota Racing Development (TRD), the 2020 Toyota Tacoma TRD Pro is built to take on the world's gnarliest terrain.⁶⁶ The stuff you want — like a TRD-tuned suspension with 2.5-in. FOX^{®56} Internal Bypass shocks, a ¼-in.-thick aluminum skid plate and Rigid Industries^{®2} fog lights — all comes standard. A mandrel-bent TRD exhaust and available TRD Pro Desert Air Intake⁷⁰ help optimize engine performance too. It's the same proven capability that's helped the TRD Pro Series deliver its unique brand of fun everywhere from the scorching desert to the Arctic Circle, and it's ready for your next big adventure. Things are about to get a lot more epic. Let's get dirty.

TRD Pro Double Cab shown in Super White with available Desert Air Intake.⁷⁰ Prototype shown with options.

See footnote 66 in Disclosures section for more information on off-roading. See numbered footnotes in Disclosures section.

What is TRD?

Toyota Racing Development (TRD) is Toyota's factory-backed racing division. While TRD USA has been building go-fast parts for Toyotas since 1979, our racing legacy traces back well over two decades before that. With a history rich in motorsports, TRD engineers have continued to apply their knowledge to help enthusiasts get more performance from their vehicles, while maintaining factory levels of quality and reliability. Our TRD Pro Series vehicles are factory-tuned and built to take you way off-road.⁶⁶ These are more than just parts; our engineers spend countless hours designing, testing and tuning with passion. And with capability this exciting, they will help fuel your passion too.

ACCESSORIES

You know your Tacoma is supremely capable right out of the box. But when you want to crank up the attitude, turn to those who know your truck best. Toyota Racing Development (TRD) brings you a line of accessories engineered just for your Tacoma. Each and every part is designed to give you maximum performance with proven dependability. And it's all available from your local Toyota dealer. All you have to do is pick out which parts are right for you.

OTHER TRD PERFORMANCE PARTS AND ACCESSORIES

- TRD 16-in. off-road beadlock-style alloy wheel
- TRD air filter
- TRD exhaust system
- TRD oil cap
- TRD oil filter
- TRD performance air intake system
- TRD radiator cap
- TRD shift knob (A/T)
- TRD shift knob (M/T)

See footnote 66 in Disclosures section for more information on off-roading. See numbered footnotes in Disclosures section.

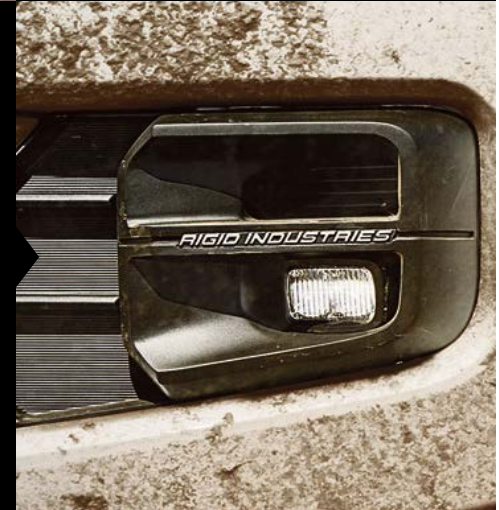


TRD EXHAUST

The bark to match the powerful V6 bite. This cat-back exhaust is constructed from 304 stainless steel, and its precise CNC mandrel bends help maximize efficiency. Helping finish off the package is a black, chrome-plated, dual-walled tip with embossed TRD logo.

RIGID INDUSTRIES^{®2} LED FOG LIGHTS

Engineered by TRD, these intense LED fog lights pack a lot of brightness into a compact package. Aluminum housings feature the Rigid Industries[®] logo, and rugged construction helps ensure that these lights can endure harsher environments. With their wide-angle beam pattern, these lights help ensure you have light when, and where, you need it.



TRD PRO DESERT AIR INTAKE⁷⁰

Breathe easier. Designed by TRD, this available air intake places an air inlet high above Tacoma's windshield. It draws cool, fresh air from high above the dustline.

Leave nothing behind.

Bikes. Boards. You name it. Tacoma's standard composite bed surface is built to withstand the bumps, impacts and scuffs of your rough-and-tumble adventure. Its integrated heavy-duty deck rail system offers lots of adjustment, making it easy to tie down gear of all sizes. Now, when action calls, you'll be ready to go.



COMPOSITE BED

Don't call it a bedliner. Tacoma's bed is composed of an ultra-durable, fiber-reinforced Sheet-Molded Composite (SMC) surface.⁵⁹ This rugged tech boasts a greater impact strength than steel and will help keep the bed of your Tacoma looking good for years to come.



AVAILABLE 120V³/400W OUTLET

Plug it in. An available bed-mounted 120V/400W AC outlet helps you keep your air compressor, lighting rigs and other accessories powered up even when you've left civilization in your dust.



DECK RAIL SYSTEM

When adventure calls, you want to bring your gear⁵⁹ along for the ride. That's why Tacoma's bed comes standard with an innovative deck rail system. With four heavy-duty adjustable tie-down cleats, Tacoma's got the strength and adjustability you need to keep your cargo securely strapped down.

UTILITY



TRD Off-Road Double Cab shown in Cement with available TRD Premium Off-Road Package, Advanced Technology Package⁶⁴ and LED headlights and fog lights. Prototype shown with options.

See footnote 59 in Disclosures section for more information on payload. See numbered footnotes in Disclosures section.

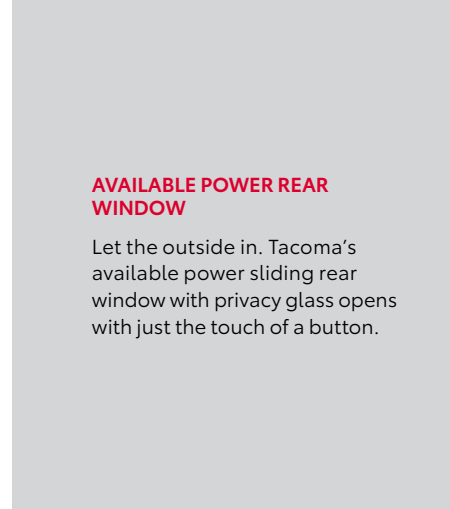
Your go-anywhere command center.

Tacoma may be tough on the outside, but it's all about comfort inside. For the driver, a clean dash layout features intuitive controls to help keep you in command of it all. Soft-touch materials throughout help everyone relax in style, no matter what seat they grabbed. Tacoma TRD Off-Road and Sport grades bring even more good stuff, including available leather-trimmed seating surfaces and dual zone automatic climate control. And with room for up to five, Tacoma makes it easy to bring the whole crew along for the ride.



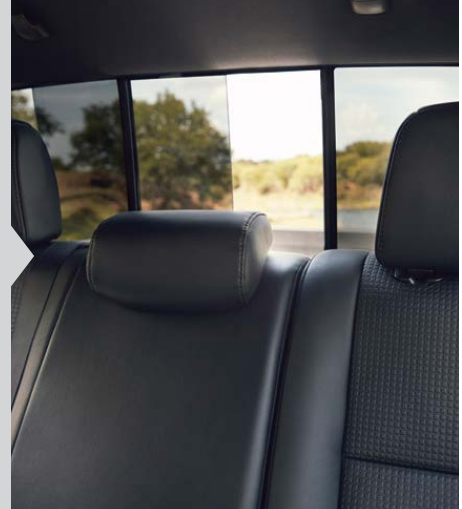
AVAILABLE MOONROOF

Open up to the elements. An available power moonroof helps bring the outside in, giving you everything from a cool breeze to an epic view of the stars.



AVAILABLE POWER REAR WINDOW

Let the outside in. Tacoma's available power sliding rear window with privacy glass opens with just the touch of a button.



AVAILABLE POWER-ADJUSTABLE SEAT

Take comfort to new heights. Tacoma features an available 10-way power-adjustable driver's seat that includes 2-way lumbar support.



INTERIOR



INTEGRATED BACKUP CAMERA⁷¹

When backing up on a trail — or just backing out of your driveway — you need to see what's behind you. The standard backup camera mounted in Tacoma's tailgate handle helps you see an image of what the camera detects behind you on the available 8.0-in. high-resolution display.

TRD Off-Road Double Cab interior shown in Black leather trim with available TRD Premium Off-Road Package, Advanced Technology Package⁶⁴ and LED headlights and fog lights. Prototype shown with options.

See numbered footnotes in Disclosures section.

Technology that keeps up with you.

Now there's even more to love about Tacoma. Enjoy a new level of convenience and peace of mind that comes only with Connected Services.¹⁵



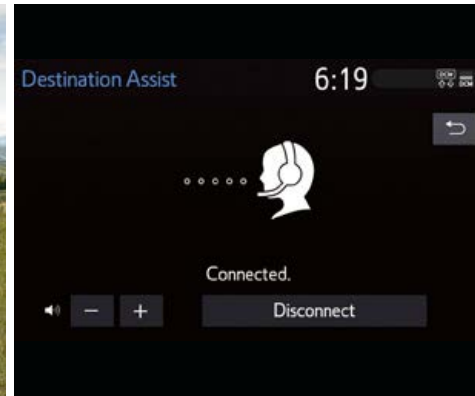
AVAILABLE REMOTE CONNECT²⁸

Locate your Tacoma in a crowded parking lot, start the engine, lock/unlock your doors and more using your compatible smart devices.⁷³ One-year trial included.²⁹



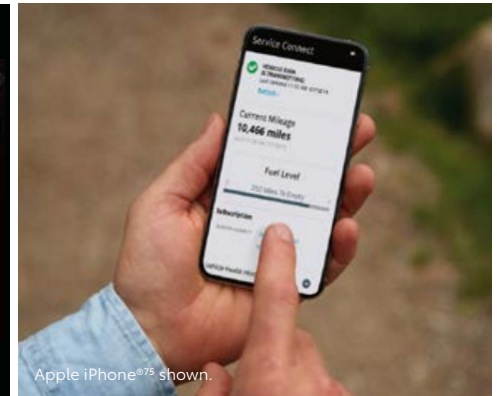
SAFETY CONNECT¹⁶

Because the unexpected can happen at any time of day — or night. Emergency SOS assistance and 24/7 Toyota Roadside Assistance⁷⁴ provide added peace of mind during your drive. One-year trial included.¹⁷



AVAILABLE DESTINATION ASSIST²⁴

Need directions? No problem. Destination Assist gives you 24/7 access to a live agent who will help you locate a destination and get directions. One-year trial included.²⁵



AVAILABLE SERVICE CONNECT²⁶

You keep track of your health info; now you can do the same for your Tacoma. Service Connect gives you personalized maintenance updates and vehicle health reports. Ten-year trial included.²⁷



TRD Off-Road Double Cab interior shown in Black leather trim with available TRD Premium Off-Road Package, Advanced Technology Package⁶⁴ and LED headlights and fog lights.

Apple CarPlay[®] screen shown. Screen depiction accurate as of summer 2019. See numbered footnotes in Disclosures section.

It's capable on the inside too.

Your location may be remote, but you still want to stay plugged in. Thanks to Tacoma's tech, you can. Its available Premium JBL®³⁰ Audio with Dynamic Navigation²⁰ keeps you in tune with your music while keeping you on track. And now that Tacoma is available with Apple CarPlay,^{®8} just pair your compatible iPhone^{®75} to access your music, phone book and more. The addition of Android Auto^{™9} and Amazon Alexa¹⁰ compatibility also makes it easier than ever to stay connected.



ANDROID AUTO^{™9}

Android Auto[™] puts many of your favorite Android[™] apps right on Tacoma's 8.0-in. touch-screen. You can take calls, pull up your favorite playlist and a whole lot more — all while your Android[™] phone is safely stashed away.



AVAILABLE JBL^{®30} SPEAKERS

The perfect soundtrack can make your adventures even more epic. That's why Tacoma is available with a powerful six-speaker JBL[®] system that delivers rich, powerful sound.



AMAZON ALEXA¹⁰ COMPATIBILITY

With the Toyota+Alexa app, you can ask to play music, control smart-home devices, find parking and more — Alexa will respond.⁷⁶



WI-FI CONNECT¹⁸

When you enable Wi-Fi Connect, you can turn your Tacoma into a mobile hotspot with 4G connectivity. Up to 2 GB of data during three-month trial.¹⁹

Limited Double Cab shown in Silver Sky Metallic. Prototype shown with options.

See numbered footnotes in Disclosures section.

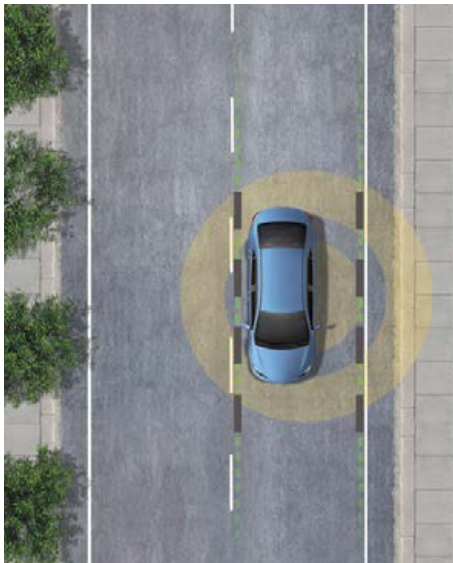


Limited Double Cab shown in Silver Sky Metallic with available tonneau cover. Prototype shown with options.



High-tech backup for the road ahead.

Toyota Safety Sense™ P (TSS-P)³⁵ is an active safety package that comes standard on every new Toyota Tacoma. This advanced precautionary safety system combines the Pre-Collision System with Pedestrian Detection (PCS w/PD),³⁶ Lane Departure Alert (LDA),⁷⁷ Automatic High Beams (AHB)³⁸ and Dynamic Radar Cruise Control (DRCC)³⁹ to assist you. TSS-P's comprehensive features create in-the-moment safety designed to support your awareness and decision-making on the road.



LANE DEPARTURE ALERT (LDA)⁷⁷

Under certain circumstances, Lane Departure Alert (LDA) is designed to help detect lane departure on roads with visible lane markings. LDA only activates when you're traveling at a speed of 32 mph or faster. When you hear and see the alert, after carefully checking the road around you, safely direct your vehicle back to the center of your lane.



AUTOMATIC HIGH BEAMS (AHB)³⁸

The Automatic High Beams (AHB) feature is a safety system designed to help you see more clearly at night — without distracting other drivers. Designed to activate at speeds above 25 mph, AHB relies on an in-vehicle camera to help detect the headlights of oncoming vehicles and taillights of preceding vehicles, then automatically toggles between high and low beams accordingly to provide the appropriate amount of light. By using high beams more frequently, the system may allow for earlier detection of pedestrians and obstacles.



PRE-COLLISION SYSTEM WITH PEDESTRIAN DETECTION (PCS w/PD)³⁶

Pre-Collision System with Pedestrian Detection (PCS w/PD) is designed to help keep the road safe by detecting a vehicle or a pedestrian in certain situations. By combining millimeter-wave radar with a camera capable of shape recognition, the system provides an audio/visual alert, warning you of a possible collision under certain circumstances. If you don't react, the system is designed for automatic braking support to help mitigate the potential for a collision.



DYNAMIC RADAR CRUISE CONTROL (DRCC)³⁹

Intended for highway use and similar to "constant speed" cruise control, Dynamic Radar Cruise Control (DRCC) lets you drive at a preset speed. DRCC uses vehicle-to-vehicle distance control, which adjusts your speed, to help you maintain a preset distance from vehicles ahead of you that are driving at a slower speed. If a driver is traveling slower than you, or within your preset range, DRCC will automatically slow your vehicle down without deactivating cruise control. If DRCC determines you need to slow down more, an audio and visual alert notifies you and brakes are applied.

TACOMA MODELS



SR

Available in Access Cab and Double Cab

Drivetrain/Powertrain

- 2.7-Liter DOHC 16-Valve 4-Cylinder with VVT-i; 159 hp @ 5200 rpm; 180 lb.-ft. @ 3800 rpm; 6-speed automatic transmission
- 3.5-Liter DOHC V6 direct-injection Atkinson-cycle with 278 hp @ 6000 rpm; 265 lb.-ft. @ 4600 rpm; 6-speed automatic transmission
- Rear-Wheel Drive (RWD) or 4WDemand part-time 4WD
- V6 Tow Package⁵¹
- Automatic Limited-Slip Differential (Auto LSD)⁵⁴
- Hill Start Assist Control (HAC)⁵⁰

Exterior Features

- Dark gray grille with black surround
- 16-in. styled steel wheels
- Projector-beam headlights with turn Daytime Running Lights (DRL)
- Color-keyed heated power outside mirrors
- Color-keyed rear bumper
- Engine/front suspension skid plate
- Deck rail system
- Sliding rear window with privacy glass
- Fiber-reinforced Sheet-Molded Composite (SMC) bed
- Variable intermittent windshield wipers

Interior Features

- Audio with 7.0-in. touch-screen, and Apple CarPlay^{®8} & Android Auto^{™9} & Amazon Alexa¹⁰ compatible
- Connected Services:¹⁵ Safety Connect¹⁶ with 1-year trial¹⁷ and Wi-Fi Connect¹⁸ with up to 2 GB within 3-month trial¹⁹
- Bluetooth^{®12} wireless technology
- Three total USB ports:³¹ one USB media port, two USB charge ports
- Integrated backup camera⁷¹
- 4.2-in. color Multi-Information Display (MID)
- Power windows and door locks
- Tire Pressure Monitor System (TPMS)⁴⁵

Safety/Convenience

- Toyota Safety Sense[™] P (TSS-P)³⁵ includes:
 - Pre-Collision System with Pedestrian Detection (PCS w/PD)³⁶
 - Lane Departure Alert (LDA)⁷⁷
 - Automatic High Beams (AHB)³⁸
 - Dynamic Radar Cruise Control (DRCC)³⁹
- Star Safety System[™]

Options and Packages

- Utility Package includes:
 - Adds black door handles, mirror caps and bumper, and fixed rear window
 - Removes rear seats and rear cup holders
 - Removes variable intermittent windshield wipers
- SR Convenience Package includes:
 - Remote keyless entry
- SX Package includes:
 - 16-in. black alloy wheels
 - Black overfenders, mirror caps and door handles



SR5

Available in Access Cab and Double Cab

Drivetrain/Powertrain

- 2.7-Liter DOHC 16-Valve 4-Cylinder with VVT-i; 159 hp @ 5200 rpm; 180 lb.-ft. @ 3800 rpm; 6-speed automatic transmission
- 3.5-Liter DOHC V6 direct-injection Atkinson-cycle with 278 hp @ 6000 rpm; 265 lb.-ft. @ 4600 rpm; 6-speed automatic transmission
- Rear-Wheel Drive (RWD) or 4WDemand part-time 4WD
- V6 Tow Package⁵¹
- Automatic Limited-Slip Differential (Auto LSD)⁵⁴
- Hill Start Assist Control (HAC)⁵⁰

Exterior Features

- Charcoal grille with chrome surround
- 16-in. dark gray alloy wheels
- Projector-beam headlights with turn Daytime Running Lights (DRL) and integrated fog lights
- Chrome rear bumper

Interior Features

- Audio with 8.0-in. touch-screen, and Apple CarPlay^{®8} & Android Auto^{™9} & Amazon Alexa¹⁰ compatible
- Connected Services:¹⁵ Safety Connect¹⁶ with 1-year trial¹⁷ and Wi-Fi Connect¹⁸ with up to 2 GB within 3-month trial¹⁹
- Bluetooth^{®12} wireless technology
- Three total USB ports:³¹ one USB media port, two USB charge ports
- Integrated backup camera⁷¹
- 4.2-in. color Multi-Information Display (MID)
- Leather-trimmed tilt/telescopic steering wheel
- Remote keyless entry
- Tire Pressure Monitor System (TPMS)⁴⁵ with individual tire location alert
- Power sliding rear window with privacy glass (V6 Double Cab only)
- Fabric-trimmed seats; 10-way power-adjustable driver's seat including 2-way lumbar support (V6 only)

Safety/Convenience

- Toyota Safety Sense[™] P (TSS-P)³⁵ includes:
 - Pre-Collision System with Pedestrian Detection (PCS w/PD)³⁶
 - Lane Departure Alert (LDA)⁷⁷
 - Automatic High Beams (AHB)³⁸
 - Dynamic Radar Cruise Control (DRCC)³⁹
- Star Safety System[™]

Options and Packages

- SR5 Appearance Package (4-cylinder) includes:
 - 16-in. alloy wheels
 - Color-keyed overfenders
- 16-in. black alloy wheels
- Parking Sonar⁴⁸ and Navigation²⁰ Package (V6 only) includes:
 - Premium Audio, Dynamic Navigation²⁰ with 3-year trial²² and Destination Assist²⁴ with 1-year trial²⁵
 - Rear parking assist sonar⁴⁸
- Technology Package (V6 only) includes:
 - Blind Spot Monitor (BSM)⁴⁶ with Rear Cross-Traffic Alert (RCTA)⁴⁷



TRD Sport

Available in Access Cab and Double Cab

Drivetrain/Powertrain

- 3.5-Liter DOHC V6 direct-injection Atkinson-cycle with 278 hp @ 6000 rpm; 265 lb.-ft. @ 4600 rpm; 6-speed manual transmission or 6-speed automatic transmission
- Rear-Wheel Drive (RWD) or 4WDemand part-time 4WD
- V6 Tow Package⁵¹
- Automatic Limited-Slip Differential (Auto LSD)⁵⁴

Exterior Features

- Gray grille with smoked finish and chrome surround
- 17-in. machined alloy wheels
- Projector-beam headlights with LED Daytime Running Lights (DRL) and integrated wide-angle fog lights
- 120V³/400W in-deck AC power outlet

Interior Features

- Audio with 8.0-in. touch-screen, and Apple CarPlay^{®8} & Android Auto^{™9} & Amazon Alexa¹⁰ compatible
- Connected Services:¹⁵ Safety Connect¹⁶ with 1-year trial¹⁷ and Wi-Fi Connect¹⁸ with up to 2 GB within 3-month trial¹⁹
- Smart Key System³³ on driver's and front passenger door with Push Button Start (A/T only)
- Fabric-trimmed seats; 10-way power-adjustable driver's seat including 2-way lumbar support
- Three total USB ports:³¹ one USB media port, two USB charge ports
- Qi-compatible wireless smartphone charging⁷
- Power sliding rear window with privacy glass (Double Cab only)

Safety/Convenience

- Toyota Safety Sense[™] P (TSS-P)³⁵ includes:
 - Pre-Collision System with Pedestrian Detection (PCS w/PD)³⁶
 - Lane Departure Alert (LDA)⁷⁷
 - Automatic High Beams (AHB)³⁸
 - Dynamic Radar Cruise Control (DRCC)³⁹
- Star Safety System[™]

Options and Packages

- TRD Premium Sport Package (Access Cab) includes:
 - Dual zone automatic climate control, heated front seats, auto headlights, Premium Audio, Dynamic Navigation²⁰ with 3-year trial²² Remote Connect²⁸ with 1-year trial²⁹ Destination Assist²⁴ with 1-year trial²⁵ and Service Connect²⁶ with 10-year trial²⁷
- TRD Premium Sport Package (Double Cab) includes:
 - Dual zone automatic climate control, leather-trimmed heated front seats, Premium JBL^{®30} Audio (A/T only), Dynamic Navigation²⁰ with 3-year trial²² Remote Connect²⁸ with 1-year trial²⁹ Destination Assist²⁴ with 1-year trial²⁵ Service Connect²⁶ with 10-year trial²⁷ auto headlights, and moonroof
- Advanced Technology Package (Double Cab) includes:
 - Panoramic view monitor (PVM)⁵ with camera, rear parking assist sonar,⁴⁸ Blind Spot Monitor (BSM)⁴⁶ with Rear Cross-Traffic Alert (RCTA),⁴⁷ and power color-keyed outside rearview mirrors with turn signal indicators
- Technology Package (Access Cab) includes:
 - Rear parking assist sonar⁴⁸ and Blind Spot Monitor (BSM)⁴⁶ with Rear Cross-Traffic Alert (RCTA)⁴⁷
- LED headlights with Daytime Running Lights (DRL) and black bezel LED fog lights

TACOMA MODELS



TRD Off-Road

Available in Access Cab and Double Cab

Drivetrain/Powertrain

- 3.5-Liter DOHC V6 direct-injection Atkinson-cycle with 278 hp @ 6000 rpm; 265 lb.-ft. @ 4600 rpm: 6-speed manual transmission or 6-speed automatic transmission
- Rear-Wheel Drive (RWD) or 4WDemand part-time 4WD
- V6 Tow Package⁵¹

Off-Road Performance

- Off-road-tuned suspension with Bilstein⁵⁵ shocks
- Electronically controlled locking rear differential
- Multi-terrain Select (MTS) and Crawl Control (CRAWL)⁴⁹ (4x4 A/T only)
- Active Traction Control (A-TRAC) (4x4 M/T only)

Exterior Features

- Black overfenders with chrome rear bumper
- 16-in. machined contrast alloy wheels

Interior Features

- Audio with 8.0-in. touch-screen, and Apple CarPlay⁶⁸ & Android Auto^{TM9} & Amazon Alexa¹⁰ compatible
- Connected Services:¹⁵ Safety Connect¹⁶ with 1-year trial¹⁷ and Wi-Fi Connect¹⁸ with up to 2 GB within 3-month trial¹⁹
- Smart Key System³³ on driver's and front passenger door with Push Button Start (A/T only)
- Fabric-trimmed seats; 10-way power-adjustable driver's seat including 2-way lumbar support
- Three total USB ports:³¹ one USB media port, two USB charge ports
- Integrated backup camera⁷¹
- 4.2-in. color Multi-Information Display (MID)
- Power sliding rear window with privacy glass (Double Cab only)

Safety/Convenience

- Toyota Safety SenseTM P (TSS-P)³⁵ includes:
 - Pre-Collision System with Pedestrian Detection (PCS w/PD)³⁶
 - Lane Departure Alert (LDA)⁷⁷
 - Automatic High Beams (AHB)³⁸
 - Dynamic Radar Cruise Control (DRCC)³⁹
- Star Safety SystemTM

Options and Packages

- TRD Premium Off-Road Package (Access Cab) includes:
 - Dual zone automatic climate control, heated front seats, auto headlights, Premium Audio, Dynamic Navigation²⁰ with 3-year trial²² Remote Connect²⁸ with 1-year trial²⁹ Destination Assist²⁴ with 1-year trial²⁵ and Service Connect²⁶ with 10-year trial²⁷
- TRD Premium Off-Road Package (Double Cab) includes:
 - Dual zone automatic climate control, leather-trimmed heated front seats, Premium JBL³⁰ Audio (A/T only), Dynamic Navigation²⁰ with 3-year trial²² Remote Connect²⁸ with 1-year trial²⁹ Destination Assist²⁴ with 1-year trial²⁵ Service Connect²⁶ with 10-year trial²⁷ auto headlights, and moonroof
- Advanced Technology Package⁶⁴ (Double Cab) includes:
 - Multi-terrain Monitor (MTM)⁶ with camera, rear parking assist sonar;⁴⁸ Blind Spot Monitor (BSM)⁴⁶ with Rear Cross-Traffic Alert (RCTA)⁴⁷
- Technology Package (Access Cab)⁶⁴ includes:
 - Rear parking assist sonar;⁴⁸ Blind Spot Monitor (BSM)⁴⁶ with Rear Cross-Traffic Alert (RCTA)⁴⁷
- LED headlights with Daytime Running Lights (DRL) and black bezel LED fog lights



Limited

Available in Double Cab

Drivetrain/Powertrain

- 3.5-Liter DOHC V6 direct-injection Atkinson-cycle with 278 hp @ 6000 rpm; 265 lb.-ft. @ 4600 rpm: 6-speed automatic transmission
- Rear-Wheel Drive (RWD) or 4WDemand part-time 4WD
- V6 Tow Package⁵¹
- Automatic Limited-Slip Differential (Auto LSD)⁵⁴
- Hill Start Assist Control (HAC)⁵⁰

Exterior Features

- LED headlights with LED Daytime Running Lights (DRL) and black bezel LED fog lights
- Silver grille with front camera and chrome surround
- Chrome-accented heated power outside mirrors with turn signal indicators
- Color-keyed overfenders and rear bumper
- Chrome rear bumper
- 18-in. polished alloy wheels
- Power tilt/slide moonroof with sliding sunshade

Interior Features

- Premium JBL³⁰ Audio, Dynamic Navigation²⁰ and Apple CarPlay⁶⁸ & Android Auto^{TM9} & Amazon Alexa¹⁰ compatible
- Connected Services:¹⁵ Safety Connect¹⁶ & Remote Connect²⁸ & Destination Assist²⁴ with 1-year trials;^{17, 29, 25} Service Connect²⁶ with 10-year trial²⁷ and Wi-Fi Connect¹⁸ with up to 2 GB within 3-month trial¹⁹ (A/T only)
- Smart Key System³³ on driver's and front passenger door with Push Button Start
- Leather-trimmed seats; 10-way power-adjustable driver's seat including 2-way lumbar support
- Panoramic view monitor (PVM)⁵
- Bluetooth^{®12} wireless technology
- Three total USB ports:³¹ one USB media port, two USB charge ports
- Integrated backup camera⁷¹
- 4.2-in. color Multi-Information Display (MID)
- Dual zone automatic climate control
- Power sliding rear window with privacy glass
- Auto-dimming day/night rearview mirror and HomeLink^{®34} universal transceiver

Safety/Convenience

- Toyota Safety SenseTM P (TSS-P)³⁵ includes:
 - Pre-Collision System with Pedestrian Detection (PCS w/PD)³⁶
 - Lane Departure Alert (LDA)⁷⁷
 - Automatic High Beams (AHB)³⁸
 - Dynamic Radar Cruise Control (DRCC)³⁹
- Star Safety SystemTM
- Blind Spot Monitor (BSM)⁴⁶ with Rear Cross-Traffic Alert (RCTA)⁴⁷
- Rear parking assist sonar⁴⁸

Options and Packages

- Mudguards
- Tonneau cover

For additional information on TRD Pro, please visit toyota.com/tacoma.

See numbered footnotes in Disclosures section.



TRD Pro

Available in Double Cab

Drivetrain/Powertrain

- 3.5-Liter DOHC V6 direct-injection Atkinson-cycle with 6-speed manual transmission or 6-speed automatic transmission
- 4WDemand part-time 4WD
- Hill Start Assist Control (HAC)⁵⁰ (A/T only)
- V6 Tow Package⁵¹

Off-Road Performance

- TRD Pro cat-back exhaust
- TRD-tuned off-road suspension with 2.5-in. FOX^{®56} Internal Bypass shocks with rear remote reservoirs
- TRD-tuned front coil springs and rear leaf springs
- Electronically controlled locking rear differential
- Multi-terrain Select (MTS) and Crawl Control (CRAWL)⁴⁹ (A/T only)
- Active Traction Control (A-TRAC) (M/T only)

Exterior Features

- TRD Pro ¼-in.-thick aluminum front skid plate
- Black overfenders and color-keyed rear bumper
- Hood scoop with matte-black decal
- Heritage "TOYOTA" front grille
- LED headlights, sequential LED turn signal indicators, black sport bezels and LED Daytime Running Lights (DRL)
- Rigid Industries^{®2} LED fog lights
- 16-in. TRD black alloy wheels with Goodyear^{®67} Wrangler^{®68} All-Terrain tires
- Power tilt/slide moonroof with sliding sunshade

Interior Features

- Premium JBL³⁰ Audio (A/T only), Dynamic Navigation²⁰ and Apple CarPlay⁶⁸ & Android Auto^{TM9} & Amazon Alexa¹⁰ compatible
- Connected Services:¹⁵ Safety Connect¹⁶ & Remote Connect²⁸ & Destination Assist²⁴ with 1-year trials;^{17, 29, 25} Service Connect²⁶ with 10-year trial²⁷ and Wi-Fi Connect¹⁸ with up to 2 GB within 3-month trial¹⁹ (A/T only)
- Black TRD Pro leather-trimmed heated front seats; 10-way power-adjustable driver's seat including 2-way lumbar support
- Smart Key System³³ on driver's and front passenger door with Push Button Start (A/T only)
- Multi-terrain Monitor (MTM)⁶
- Three total USB ports:³¹ one USB media port, two USB charge ports
- Integrated backup camera⁷¹
- 4.2-in. color Multi-Information Display (MID)
- TRD shift knob and TRD floor mats³²
- Dual zone automatic climate control
- Power sliding rear window with privacy glass

Safety/Convenience

- Toyota Safety SenseTM P (TSS-P)³⁵ includes:
 - Pre-Collision System with Pedestrian Detection (PCS w/PD)³⁶
 - Lane Departure Alert (LDA)⁷⁷
 - Automatic High Beams (AHB)³⁸
 - Dynamic Radar Cruise Control (DRCC)³⁹
- Star Safety SystemTM
- Blind Spot Monitor (BSM)⁴⁶ with Rear Cross-Traffic Alert (RCTA)⁴⁷
- Rear parking assist sonar⁴⁸

Options and Packages

- Desert Air Intake⁷⁰

Color



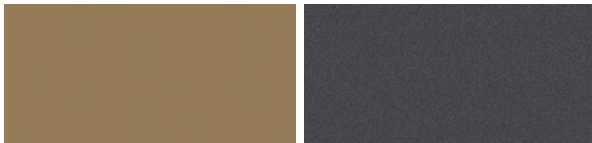
Midnight Black Metallic

Voodoo Blue



Army Green

Barcelona Red Metallic



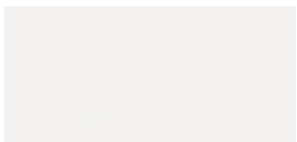
Quicksand

Magnetic Gray Metallic



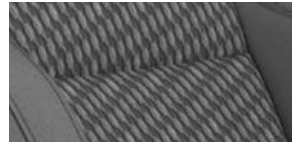
Cement

Silver Sky Metallic



Super White

Trim



SR and SR5 fabric in Cement



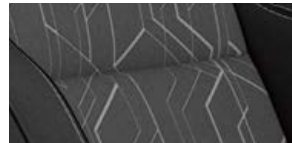
SR5 fabric in Black with caramel accent stitching



SR5 fabric in Black with red accent stitching



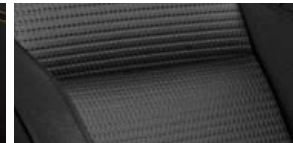
Limited leather trim in Hickory (also available in Black)



TRD Sport and TRD Off-Road fabric in Cement/Black



TRD Sport and TRD Off-Road fabric in Black with orange accent stitching



TRD Sport and TRD Off-Road leather trim in Black



TRD Pro leather trim in Black with red accent stitching

Wheels



16-in. styled steel wheel



16-in. black alloy wheel



16-in. dark gray alloy wheel



17-in. machined alloy wheel



16-in. machined contrast alloy wheel



18-in. polished alloy wheel



16-in. TRD Pro black alloy wheel

ACCESSORIES

A wide range of Genuine Toyota Accessories is available to help make driving your Tacoma even more fun. Now your Tacoma can reflect your personal style. There's something for everyone. Some accessories may not be available in all regions of the country. For a complete list of accessories, go to toyota.com/tacoma.

3-in. round tube steps
5-in. oval tube steps (black or chrome)
All-weather floor liners³²
Alloy wheel locks — black or chrome
Ball mount
Bed cleats
Bed extender⁵⁹
Bed lighting kit
Bed mat⁵⁹
BedRug® bedliner
BedStep®

Black wheel lug nuts
Blackout emblem overlays
Cargo divider⁷⁸
Cargo net — exterior⁷⁸
Cargo tote⁷⁸
Carpet floor mats³²
Cast-aluminum running boards
Coin holder/ashtray cup
Deck rail camera mount⁷⁹
Door edge guards
Doorsill protectors

Emergency assistance kit
Exhaust tip — black chrome
Exhaust tip — chrome
First aid kit
Glass Breakage Sensor⁸⁰
Hood graphic
Mini tie-downs with hooks
Mudguards
Paint protection film⁸¹
Predator tube steps
Roof rack⁸²

Security system⁸³
Soft tonneau cover
Spare tire lock
Tailgate insert, black or chrome
Trailer ball
Truck bed D-rings
Universal tablet holder⁷²



Black tailgate insert



All-weather floor liners³²



Predator tube steps



BedStep®



Bed extender⁵⁹



Doorsill protectors



Blackout emblem overlays



Exhaust tip — black chrome

TRD ACCESSORIES

In 1979, Toyota Racing Development, U.S.A. was founded and put in charge of improving production vehicles for increased performance. Toyota Racing Development (TRD) also supported Toyota's racing interests around the world, along with producing a line of performance-oriented accessories for Toyota vehicles. This bold step has benefited Toyota owners and racing enthusiasts around the globe. Today our line of TRD accessories will give your Tacoma an edge in both looks and performance. Everything our engineers learned in competition goes into each and every part.

TRD 16-in. black alloy wheels

TRD 16-in. off-road beadlock-style alloy wheels
(matte-black, gray or bronze)

TRD air filter

TRD air filter cleaning kit

TRD brake pads

TRD cat-back exhaust with black chrome tip

TRD cat-back exhaust with chrome tip

TRD oil cap

TRD oil filter

TRD performance air intake system

TRD Pro graphics

TRD radiator cap

TRD shift knob, red or black

TRD skid plate with red TRD logo



TRD front skid plate



TRD performance air intake system



TRD oil filter



TRD performance exhaust with black chrome exhaust tip



TRD 16-in. off-road beadlock-style alloy wheels



TRD 16-in. forged matte-black alloy wheels



TRD shift knob



TRD Pro graphics

FEATURES¹

EXTERIOR	ACCESS CAB				DOUBLE CAB					
	SR	SR5	TRD SPORT	TRD OFF-ROAD	SR	SR5	TRD SPORT	TRD OFF-ROAD	LIMITED	TRD PRO
Projector-beam headlights with turn Daytime Running Lights (DRL)	S	—	—	—	S	—	—	—	—	—
Projector-beam headlights with turn Daytime Running Lights (DRL) and integrated fog lights	—	S	—	—	—	S	—	—	—	—
Projector-beam headlights with LED Daytime Running Lights (DRL) and integrated wide-angle fog lights	—	—	S	S	—	—	S	S	—	—
Projector-beam headlights with LED Daytime Running Lights (DRL) and integrated fog lights with chrome bezels	—	—	—	—	—	—	—	—	S	—
Projector-beam headlights with black sport bezels and LED Daytime Running Lights (DRL), Rigid Industries ² LED fog lights, and taillights with black sport bezels	—	—	—	—	—	—	—	—	—	S
LED headlights with LED Daytime Running Lights (DRL) and black bezel LED fog lights	—	—	P	P	—	—	P	P	S	—
LED headlights with sequential LED turn signal indicators, black sport bezels and LED Daytime Running Lights (DRL)	—	—	—	—	—	—	—	—	—	S
Dark gray grille with black surround, color-keyed heated power outside mirrors, color-keyed door handles and rear bumper	S	—	—	—	S	—	—	—	—	—
Charcoal grille with chrome surround, color-keyed heated power outside mirrors, door handles and chrome rear bumper (V6 adds color-keyed overfenders)	—	S	—	—	—	S	—	—	—	—
Gray grille with smoked finish and chrome surround, hood scoop, color-keyed heated power outside mirrors with turn signal indicators, color-keyed door handles, overfenders and rear bumper	—	—	S	—	—	—	S	—	—	—
Gray grille with smoked finish and chrome surround, color-keyed heated power outside mirrors with turn signal indicators, color-keyed door handles, black overfenders and chrome rear bumper	—	—	—	S	—	—	—	S	—	—
Silver grille with chrome surround, chrome-accented heated power outside mirrors with turn signal indicators, chrome-accented door handles, color-keyed overfenders and rear bumper	—	—	—	—	—	—	—	—	S	—
Heritage-inspired "TOYOTA" front grille, black badging, overfenders, hood scoop with graphic, and color-keyed heated power outside mirrors with turn signal indicators, door handles and rear bumper	—	—	—	—	—	—	—	—	—	S
Fiber-reinforced Sheet-Molded Composite (SMC) inner bed with steel outer panels, storage compartments and rail caps, with easy lower, lockable and removable tailgate	S	S	S	S	S	S	S	S	S	S
Deck rail system with four adjustable tie-down cleats and four fixed cargo bed tie-down points	S	S	S	S	S	S	S	S	S	S
120V ³ /400W deck-mounted AC power outlet	—	—	S	S	—	—	S	S	S	S
Power tilt/slide moonroof and sliding sunshade	—	—	—	—	—	—	P	P	S	S
16-in. styled steel wheels with P245/75R16 tires (4-cyl. only)	S	S	—	—	S	S	—	—	—	—
16-in. black alloy wheels with P245/75R16 tires (V6 only)	O	O	—	—	—	O	—	—	—	—
16-in. dark gray alloy wheels with P245/75R16 tires ⁴	—	S/P	—	—	—	S/P	—	—	—	—
17-in. machined alloy wheels with P265/65R17 tires	—	—	S	—	—	—	S	—	—	—
16-in. machined contrast alloy wheels with P265/70R16 tires	—	—	—	S	—	—	—	S	—	—
16-in. TRD Pro black alloy wheels with P265/70R16 All-Terrain tires	—	—	—	—	—	—	—	—	—	S
18-in. polished alloy wheels with P265/60R18 tires	—	—	—	—	—	—	—	—	S	—
Variable intermittent windshield wipers	S	S	S	S	S	S	S	S	S	S
Fixed rear glass	P	—	—	—	P	—	—	—	—	—
Sliding rear glass w/privacy glass	S	S	S	S	S	S	S	S	—	—
Power sliding rear window w/privacy glass (Double Cab V6 only)	—	—	—	—	—	S	S	S	S	S
Panoramic view monitor (PVM) ⁵ with camera	—	—	P	—	—	—	P	—	S	—
Multi-terrain Monitor (MTM) ⁶ with camera	—	—	—	P	—	—	—	P	—	S
Front and rear mudguards (SR5 requires Appearance Package)	—	O	O	O	—	O	O	O	O	O
TRD Pro front skid plate	—	—	—	—	—	—	—	—	—	S
Skid plates: on engine/front suspension	S	S	S	S	S	S	S	S	S	—
Hard tri-fold tonneau cover: lockable, weather-resistant and folds to the cab for bed access	O	O	O	O	O	O	O	O	O	O
Integrated color-keyed tailgate spoiler	S	S	S	S	S	S	S	S	S	S

See numbered footnotes in Disclosures section.

S = Standard O = Optional — = Not available P = Feature is available as part of an option package.

FEATURES (continued)

INTERIOR	ACCESS CAB				DOUBLE CAB					
	SR	SR5	TRD SPORT	TRD OFF-ROAD	SR	SR5	TRD SPORT	TRD OFF-ROAD	LIMITED	TRD PRO
Analog instrumentation with speedometer, tachometer, coolant temperature and fuel gauges; 4.2-in. color Multi-Information Display (MID) with outside temperature, odometer, tripmeters and average fuel economy	S	S	S	—	S	S	S	—	S	—
Analog instrumentation with speedometer, tachometer, coolant temperature and fuel gauges; 4.2-in. color Multi-Information Display (MID) with outside temperature, odometer, tripmeters, average fuel economy and inclinometer with roll/pitch displays	—	—	—	S	—	—	—	S	—	S
Air conditioning	S	S	S	S	S	S	S	S	—	—
Front dual zone automatic climate control with air filter and individual temperature settings for driver and front passenger	—	—	P	P	—	—	P	P	S	S
Qi-compatible wireless smartphone and mobile device charging. ⁷ Compatible smartphone is placed on top of the power transmission pad. ⁷	—	—	S	S	—	—	S	S	S	S
Audio — includes 6 speakers, 7.0-in. touch-screen, Apple CarPlay ^{®8} & Android Auto ^{™9} & Amazon Alexa ¹⁰ compatible, hands-free phone capability, advanced voice recognition ¹¹ and music streaming ¹² via Bluetooth ^{®12} wireless technology, and SiriusXM ^{®13} with 3-month All Access trial ¹⁴ Connected Services ¹⁵ — Safety Connect ^{®16} with 1-year trial ¹⁷ and Wi-Fi Connect ^{®18} with up to 2 GB within 3-month trial. ¹⁹ See toyota.com/audio-multimedia for details.	S	—	—	—	S	—	—	—	—	—
Audio — includes 4 speakers, 7.0-in. touch-screen, Apple CarPlay ^{®8} & Android Auto ^{™9} & Amazon Alexa ¹⁰ compatible, hands-free phone capability, advanced voice recognition ¹¹ and music streaming ¹² via Bluetooth ^{®12} wireless technology, and SiriusXM ^{®13} with 3-month All Access trial ¹⁴ Connected Services ¹⁵ — Safety Connect ^{®16} with 1-year trial ¹⁷ and Wi-Fi Connect ^{®18} with up to 2 GB within 3-month trial. ¹⁹ See toyota.com/audio-multimedia for details.	P	—	—	—	—	—	—	—	—	—
Audio — includes 6 speakers, 8.0-in. touch-screen, Apple CarPlay ^{®8} & Android Auto ^{™9} & Amazon Alexa ¹⁰ compatible, hands-free phone capability, advanced voice recognition ¹¹ and music streaming ¹² via Bluetooth ^{®12} wireless technology, and SiriusXM ^{®13} with 3-month All Access trial ¹⁴ Connected Services ¹⁵ — Safety Connect ^{®16} with 1-year trial ¹⁷ and Wi-Fi Connect ^{®18} with up to 2 GB within 3-month trial. ¹⁹ See toyota.com/audio-multimedia for details.	—	S	S	S	—	S	S	S	—	—
Premium Audio and Dynamic Navigation ²⁰ — includes 6 speakers, 8.0-in. touch-screen, HD Radio ^{™21} Dynamic Navigation ²⁰ with 3-year trial, ²² Dynamic POI Search, Dynamic Voice Recognition, ²³ hands-free phone capability and music streaming ¹² via Bluetooth ^{®12} wireless technology, Apple CarPlay ^{®8} & Android Auto ^{™9} & Amazon Alexa ¹⁰ compatible, and SiriusXM ^{®13} with 3-month All Access trial ¹⁴ Connected Services ¹⁵ — Safety Connect ^{®16} with 1-year trial, ¹⁷ Wi-Fi Connect ^{®18} with up to 2 GB within 3-month trial ¹⁹ and Destination Assist ²⁴ with 1 year trial ²⁵ See toyota.com/audio-multimedia for details.	—	P	—	—	—	P	—	—	—	—
Premium Audio with Dynamic Navigation ²⁰ — includes 6 speakers, 8.0-in. touch-screen, HD Radio ^{™21} Dynamic Navigation ²⁰ with 3-year trial, ²² Dynamic POI Search, Dynamic Voice Recognition, ²³ hands-free phone capability and music streaming ¹² via Bluetooth ^{®12} wireless technology, Apple CarPlay ^{®8} & Android Auto ^{™9} & Amazon Alexa ¹⁰ compatible, and SiriusXM ^{®13} with 3-month All Access trial ¹⁴ Connected Services ¹⁵ — Safety Connect ^{®16} with 1-year trial, ¹⁷ Service Connect ²⁶ with 10-year trial, ²⁷ Remote Connect ²⁸ with 1-year trial, ²⁹ Wi-Fi Connect ^{®18} with up to 2 GB within 3-month trial, ¹⁹ and Destination Assist ²⁴ with 1-year trial. ²⁵ See toyota.com/audio-multimedia for details.	—	—	P	P	—	—	—	—	—	—
Premium Audio with Dynamic Navigation ²⁰ with JBL ^{®30} and Clari-Fi ^{™30} — includes 6 speakers, subwoofer and amplifier, 8.0-in. touch-screen, HD Radio ^{™21} Dynamic Navigation ²⁰ with 3-year trial, ²² Dynamic POI Search, Dynamic Voice Recognition, ²³ hands-free phone capability and music streaming ¹² via Bluetooth ^{®12} wireless technology, Apple CarPlay ^{®8} & Android Auto ^{™9} & Amazon Alexa ¹⁰ compatible, and SiriusXM ^{®13} with 3-month All Access trial ¹⁴ Connected Services ¹⁵ — Safety Connect ^{®16} with 1-year trial, ¹⁷ Service Connect ²⁶ with 10-year trial, ²⁷ Remote Connect ²⁸ with 1-year trial, ²⁹ Wi-Fi Connect ^{®18} with up to 2 GB within 3-month trial, ¹⁹ and Destination Assist ²⁴ with 1-year trial. ²⁵ See toyota.com/audio-multimedia for details.	—	—	—	—	—	—	P	P	S	S
Three total USB ports: ³¹ one USB media port, two USB charge ports	S	S	S	S	S	S	S	S	S	S
Fabric-trimmed seats; 4-way adjustable driver's seat with lumbar support; 4-way adjustable front passenger seat	S	S	—	—	S	S	—	—	—	—
Fabric-trimmed seats; 10-way adjustable driver's seat including 2-way power lumbar support; 4-way adjustable front passenger seat (V6 only)	—	S	S	S	—	S	S	S	—	—
Leather-trimmed seats; 10-way adjustable driver's seat including 2-way power lumbar support; 4-way adjustable front passenger seat	—	—	—	—	—	—	P	P	S	—
Black TRD Pro leather-trimmed heated front seats; 10-way power adjustable driver's seat including 2-way lumbar support; 4-way adjustable front passenger seat	—	—	—	—	—	—	—	—	—	S
Urethane tilt/telescopic steering wheel with audio controls	S	—	—	—	S	—	—	—	—	—


See numbered footnotes in Disclosures section.

S = Standard O = Optional — = Not available P = Feature is available as part of an option package.

FEATURES (continued)

INTERIOR (continued)	ACCESS CAB				DOUBLE CAB					
	SR	SR5	TRD SPORT	TRD OFF-ROAD	SR	SR5	TRD SPORT	TRD OFF-ROAD	LIMITED	TRD PRO
Leather-trimmed tilt/telescopic steering wheel with audio and Bluetooth ^{®12} hands-free phone controls	—	S	S	S	—	S	S	S	S	S
Leather-trimmed shift lever	—	—	S	S	—	—	S	S	S	S
TRD Pro shift knob	—	—	—	—	—	—	—	—	—	S
TRD Pro floor mats ³²	—	—	—	—	—	—	—	—	—	S
Remote keyless entry system with lock, unlock and panic functions	P	S	S	S	P	S	S	S	—	S
Smart Key System ³³ on driver's and front passenger door with Push Button Start (A/T only)	—	—	S	S	—	—	S	S	S	S
Manual day/night rearview mirror (4-cyl. only)	S	S	—	—	S	S	—	—	—	—
Auto-dimming day/night rearview mirror (V6 only)	—	S	S	S	—	S	S	S	—	—
Auto-dimming day/night rearview mirror and HomeLink ^{®34} universal transceiver	—	—	—	—	—	—	—	—	S	S

SAFETY AND CONVENIENCE

Toyota Safety Sense™ P (TSS-P) ³⁵ — includes Pre-Collision System with Pedestrian Detection (PCS w/PD), ³⁶ Lane Departure Alert (LDA) with Sway Warning System (SWS), ³⁷ Automatic High Beams (AHB) ³⁸ and Dynamic Radar Cruise Control (DRCC) ³⁹	S	S	S	S	S	S	S	S	S	S
 Star Safety System™ — includes Vehicle Stability Control (VSC), ⁴⁰ Traction Control (TRAC), Anti-lock Brake System (ABS) with Electronic Brake-force Distribution (EBD), Brake Assist (BA) ⁴¹ and Smart Stop Technology [®] (SST) ⁴²	S	S	S	S	S	S	S	S	S	S
Driver and front passenger Advanced Airbag System ⁴³	S	S	S	S	S	S	S	S	S	S
Driver and front passenger seat-mounted side airbags, driver and front passenger knee airbags, and front and rear Roll-sensing Side Curtain Airbags (RSCA) ⁴³	S	S	S	S	S	S	S	S	S	S
Driver and front passenger active headrests ⁴⁴	S	S	S	S	S	S	S	S	S	S
3-point seatbelts for all seating positions; driver-side Emergency Locking Retractor (ELR) and Automatic/Emergency Locking Retractor (ALR/ELR) on all passenger seatbelts	S	S	S	S	S	S	S	S	S	S
LATCH (Lower Anchors and Tethers for CHildren) includes lower anchors for front passenger seat on Access Cab and outboard rear seats on Double Cab	S	S	S	S	S	S	S	S	S	S
Child-protector rear door locks (Double Cab only)	—	—	—	—	S	S	S	S	S	S
Tire Pressure Monitor System (TPMS) ⁴⁵	S	—	—	—	S	—	—	—	—	—
Tire Pressure Monitor System (TPMS) ⁴⁵ with individual tire location alert	—	S	S	S	—	S	S	S	S	S
Blind Spot Monitor (BSM) ⁴⁶ with Rear Cross-Traffic Alert (RCTA) ⁴⁷	—	—	P	P	—	—	P	P	S	S
Rear parking assist sonar ⁴⁸	—	P	P	P	—	P	P	P	S	S
Multi-terrain Select and Crawl Control (CRAWL) ⁴⁹ (4WD and A/T only)	—	—	—	S	—	—	—	S	—	S
Hill Start Assist Control (HAC) ⁵⁰ (A/T only)	S	S	S	S	S	S	S	S	S	S
Active Traction Control (A-TRAC) (M/T only)	—	—	—	S	—	—	—	S	—	S
Electronically controlled locking rear differential	—	—	—	S	—	—	—	S	—	S
Class-IV towing hitch receiver, ⁵¹ ATF cooler (not available on M/T), engine oil cooler, power steering cooler, 130-amp alternator, 4- and 7-pin connector with converter, and Trailer-Sway Control (TSC) ⁵² (V6 only)	S	S	S	S	S	S	S	S	S	S
Engine immobilizer ⁵³	S	S	S	S	S	S	S	S	S	S

WARRANTIES

Every Toyota Car, Truck and SUV is built to exceptional standards. And that's not idle boasting. We back it up with these Limited Warranty Coverages:

Basic: 36 months/36,000 miles (all components other than normal wear and maintenance items).

Powertrain: 60 months/60,000 miles (engine, transmission/transaxle, drive system, seatbelts and airbags).

Rust-Through: 60 months/unlimited miles (corrosion perforation of sheet metal).

Emissions: Coverages vary under Federal and California regulations. Refer to applicable *Warranty and Maintenance Guide* for details.

Accessories: For Genuine Toyota Accessories purchased at the time of the new vehicle purchase, the Toyota Accessory Warranty coverage is in effect for 36 months/36,000 miles from the vehicle's in-service date, which is the same coverage as the Toyota New Vehicle Limited Warranty.

For Genuine Toyota Accessories purchased after the new vehicle purchase the coverage is 12 months, regardless of mileage, from the date the accessory was installed on the vehicle, or the remainder of any applicable new vehicle warranty, whichever provides greater coverage.

You may be eligible for transportation assistance if it's necessary that your vehicle be kept overnight for repairs covered under warranty. Please see your authorized Toyota dealership for further details.

For complete details about Toyota's warranties, please visit www.toyota.com, refer to the applicable *Warranty and Maintenance Guide* or see your Toyota dealer.

See numbered footnotes in Disclosures section.

S = Standard O = Optional — = Not available P = Feature is available as part of an option package.

SPECIFICATIONS

MECHANICAL/PERFORMANCE	ACCESS CAB				DOUBLE CAB					
	SR	SR5	TRD SPORT	TRD OFF-ROAD	SR	SR5	TRD SPORT	TRD OFF-ROAD	LIMITED	TRD PRO
ENGINE										
2.7-Liter DOHC 16-Valve 4-Cylinder with VVT-i; 159 hp @ 5200 rpm; 180 lb.-ft. @ 3800 rpm	S	S	—	—	S	S	—	—	—	—
3.5-Liter V6 DOHC 24-Valve direct-injection Atkinson-cycle engine with VVT-iW (Variable Valve Timing-intelligent Wide) intake and VVT-i (Variable Valve Timing with intelligence) exhaust, with 278 hp @ 6000 rpm/265 lb.-ft. @ 4600 rpm (bore x stroke: 94.0 x 83.0 mm; compression ratio: 11.8)	S	S	S	S	S	S	S	S	S	S
TRD Pro cat-back exhaust	—	—	—	—	—	—	—	—	—	S
EMISSION RATING										
Low Emission Vehicle (LEV-III)	S	S	S	S	S	S	S	S	S	S
TRANSMISSION										
6-speed manual transmission	—	—	S	—	—	—	S	S	—	S
6-speed Electronically Controlled automatic Transmission with intelligence (ECT-i)	S	S	S	S	S	S	S	S	S	S
Clutch start-cancel switch (M/T only)	—	—	S	—	—	—	S	S	—	S
DRIVETRAIN										
Rear-Wheel Drive (RWD) with Automatic Limited-Slip Differential (Auto LSD) ⁵⁴	S	S	S	S	S	S	S	S	S	—
4WDemand part-time 4WD with electronically controlled transfer case and Automatic Limited-Slip Differential (Auto LSD) ⁵⁴	O	O	O	O	O	O	O	O	O	S
Active Traction Control (A-TRAC) (M/T only)	—	—	—	—	—	—	—	S	—	S
BODY CONSTRUCTION										
One-piece frame rails with 8-in. cross members and fully boxed front sub-frame	S	S	S	S	S	S	S	S	S	S
SUSPENSION										
Coil-spring double-wishbone front suspension and stabilizer bar; leaf spring rear suspension with staggered outboard-mounted gas shock absorbers and stabilizer bar	S	S	S	S	S	S	S	S	S	S
TRD sport-tuned suspension	—	—	S	—	—	—	S	—	—	—
TRD-tuned off-road suspension with Bilstein ^{®55} shocks	—	—	—	S	—	—	—	S	—	—
TRD-tuned off-road suspension with 2.5-in. FOX ^{®56} Internal Bypass coil-overs and rear remote reservoir shocks	—	—	—	—	—	—	—	—	—	S
STEERING										
Variable-assist power rack-and-pinion steering	S	S	S	S	S	S	S	S	S	S
Turning circle diameter, curb-to-curb (ft.) (Standard Bed/Long Bed)	40.6/—	40.6/—	40.6/—	40.6/—	40.6/—	40.6/44.1	40.6/44.1	40.6/44.1	40.6/—	41.6/—
BRAKES										
Power-assisted ventilated front disc brakes; rear drum brakes with tandem booster and Star Safety System [™]	S	S	S	S	S	S	S	S	S	S
DIMENSIONS										
EXTERIOR (in.)										
Overall height	70.6	70.6	70.6	70.6	70.6	70.6	70.6	70.6	70.6	71.6
Overall width	74.4	74.4	75.2	75.2	74.4	74.4	75.2	75.2	75.2	75.2
Overall length (Standard Bed/Long Bed)	212.3/—	212.3/—	212.3/—	212.3/—	212.3/—	212.3/225.5	212.3/225.5	212.3/225.5	212.3/—	212.3/—
Wheelbase (Standard Bed/Long Bed)	127.4/—	127.4/—	127.4/—	127.4/—	127.4/—	127.4/140.6	127.4/140.6	127.4/140.6	127.4/—	127.4/—
Bed length (Standard Bed/Long Bed)	73.7/—	73.7/—	73.7/—	73.7/—	60.5/73.7	60.5/73.7	60.5/73.7	60.5/73.7	60.5/—	60.5/—
Bed height	19.1	19.1	19.1	19.1	19.1	19.1	19.1	19.1	19.1	19.1
Bed width	41.5	41.5	41.5	41.5	41.5	41.5	41.5	41.5	41.5	41.5
Track (front/rear)	63/63.2	63/63.2	63/63.2	63/63.2	63/63.2	63/63.2	63/63.2	63/63.2	63/63.2	64/64.2
INTERIOR (front/rear-seat) (in.)										
Head room	39.7/34.9	39.7/34.9	39.7/34.9	39.7/34.9	39.7/38.3	39.7/38.3	39.7/38.3	39.7/38.3	39.7/38.3	39.7/38.3
Hip room	57.2/51.7	57.2/51.7	57.2/51.7	57.2/51.7	57.2/56.3	57.2/56.3	57.2/56.3	57.2/56.3	57.2/56.3	57.2/56.3
Leg room	42.9/24.6	42.9/24.6	42.9/24.6	42.9/24.6	42.9/32.6	42.9/32.6	42.9/32.6	42.9/32.6	42.9/32.6	42.9/32.6
Shoulder room	58.3/56.5	58.3/56.5	58.3/56.5	58.3/56.5	58.3/58.9	58.3/58.9	58.3/58.9	58.3/58.9	58.3/58.9	58.3/58.9

See numbered footnotes in Disclosures section.

S = Standard O = Optional — = Not available P = Feature is available as part of an option package.

SPECIFICATIONS (continued)

OFF-HIGHWAY	ACCESS CAB				DOUBLE CAB					
	SR	SR5	TRD SPORT	TRD OFF-ROAD	SR	SR5	TRD SPORT	TRD OFF-ROAD	LIMITED	TRD PRO
Approach/departure/breakover angle (degrees)										
Standard Bed (4x2)	29/23.5/24*	29/23.5/24	29/23.5/24	—/—/—	—/—/—	—/—/—	—/—/—	—/—/—	—/—/—	—/—/—
(4x4)	29/23.5/21	29/23.5/21	29/23.5/21	32/29/24	—/—/—	—/—/—	—/—/—	—/—/—	—/—/—	—/—/—
Short Bed (4x2)	—/—/—	—/—/—	—/—/—	—/—/—	29/23.5/21	29/23.5/21	29/23.5/21	32/23.1/20	29/23.5/21	—/—/—
(4x4)	—/—/—	—/—/—	—/—/—	—/—/—	29/23.5/21	29/23.5/21	29/23.5/21	32/23.5/21	29/23.5/21	35/19.1/23.9
Long Bed (4x2)	—/—/—	—/—/—	—/—/—	—/—/—	—/—/—	29/23.1/20	29/23.1/20	—/—/—	—/—/—	—/—/—
(4x4)	—/—/—	—/—/—	—/—/—	—/—/—	—/—/—	29/23.1/21	29/23.1/21	32/23.1/21	—/—/—	—/—/—
Ground clearance (in.)	9.4	9.4	9.4	9.4	9.4	9.4	9.4	9.4	9.4	9.4
Electronically controlled locking rear differential	—	—	—	S	—	—	—	S	—	S
RATIOS										
4x4 transfer case ratio (high/low)	1.00/2.57	1.00/2.57	1.00/2.57	1.00/2.57	1.00/2.57	1.00/2.57	1.00/2.57	1.00/2.57	1.00/2.57	1.00/2.57
Differential ratio, V6 M/T	—	—	4.30	4.30	—	—	4.30	4.30	—	4.30
Differential ratio, 4-cyl./V6 A/T	4.30/3.909	4.30/3.909	—/3.909	—/3.909	4.30/3.909	4.30/3.909	—/3.909	—/3.909	—/3.909	—/3.909
WEIGHTS AND CAPACITIES										
Curb weight (lb.), 4-cyl. A/T (4x2/4x4)	3980/4220	3980/4220	—/—	—/—	4095/—	4095/—	—/—	—/—	—/—	—/—
Curb weight (lb.), V6 M/T (4x2/4x4)	—/—	—/—	—/4325	—/—	—/—	—/—	—/4445	—/4445	—/—	—/4445
Curb weight (lb.), V6 A/T (4x2/4x4)	4060/4305	4060/4305	4060/4305	—/4305	—/4425	4180/4425 ⁵⁷	4180 ⁵⁸ /4425 ⁵⁷	4180/4425 ⁵⁷	4230/4480	—/4425
Gross Vehicle Weight Rating (GVWR) (lb.)	5600	5600	5600	5600	5600	5600	5600	5600	5600	5600
Gross Combined Weight Rating (GCWR) (lb.)	11,360	11,360	11,360	11,360	11,360	11,360	11,360	11,360	11,360	11,360
Payload (lb.) ⁵⁹ 4-cyl. A/T (4x2/4x4)	1620/1380	1620/1380	—/—	—/—	1505/—	1505/—	—/—	—/—	—/—	—/—
Payload (lb.) ⁵⁹ V6 M/T (4x2/4x4)	—/—	—/—	—/1275	—/—	—/—	—/—	—/1155	—/1155	—/—	—/1155
Payload (lb.) ⁵⁹ V6 A/T (4x2/4x4)	1540/1295	1540/1295	1540/1295	—/1295	—/1175	1420/1175 ⁶⁰	1420/1175 ⁶⁰	1420/1175 ⁶⁰	1370/1120	—/1175
Fuel tank (gal.)	21.1	21.1	21.1	21.1	21.1	21.1	21.1	21.1	21.1	21.1
Passenger volume (cu. ft.) (behind front/rear seat)	57.5/28.1	57.5/28.1	57.5/28.1	57.5/28.1	57.5/42.6	57.5/42.6	57.5/42.6	57.5/42.6	57.5/42.6	57.5/42.6
Seating capacity	4	4	4	4	5	5	5	5	5	5
TOWING⁵¹										
Class-IV towing hitch receiver, ATF cooler (not available on M/T), engine oil cooler, power steering cooler, 130-amp alternator, 4- and 7-pin connector with converter, and Trailer-Sway Control (TSC) ⁵² (V6 only)										
	S	S	S	S	S	S	S	S	S	S
Tongue load (lb.), 4-cyl. A/T (4x2/4x4)	350/350	350/350	—/—	—/—	350/—	350/—	—/—	—/—	—/—	—/—
Tongue load (lb.), V6 M/T (4x2/4x4)	—/—	—/—	—/650	—/—	—/—	—/—	—/640	—/640	—/—	—/640
Tongue load (lb.), V6 A/T (4x2/4x4)	680/650	680/650	680/650	—/650	—/640	670 ⁶¹ /640	670 ⁶¹ /640	670/640	660/640	—/640
Towing capacity (lb.), 4-cyl. A/T (4x2/4x4)	3500/3500	3500/3500	—/—	—/—	3500/—	3500/—	—/—	—/—	—/—	—/—
Towing capacity (lb.), V6 M/T (4x2/4x4)	—/—	—/—	—/6500	—/6500	—/—	—/—	—/6400	—/6400	—/—	—/6400
Towing capacity (lb.), V6 A/T (4x2/4x4)	6800/6500	6800/6500	6800/6500	—/6500	—/6400	6700/6400	6700 ⁶² /6400	6700/6400	6600/6400	—/6400
TIRES										
Spare: full-size	S	S	S	S	S	S	S	S	S	S
MILEAGE ESTIMATES (mpg city/highway)⁶³										
4-cyl. A/T (4x2/4x4)	20/23; 19/22	19/23; 19/22	—/—	—/—	19/23; —/—	19/23; —/—	—/—	—/—	—/—	—/—
V6 M/T (4x2/4x4)	—/—	—/—	—/—; 17/21	—/—	—/—; —/—	—/—; —/—	—/—; 17/21	—/—; 17/20	—/—	—/—; 17/20
V6 A/T (4x2/4x4)	19/24; 18/22	19/24; 18/23	19/24; 18/23	—/—; 18/23	—/—; 18/23	19/24; 18/23	19/24; 18/23	19/24; 18/23	19/24; 18/23	—/—; 18/22

See numbered footnotes in Disclosures section.

*V6=21 degrees

S = Standard O = Optional — = Not available P = Feature is available as part of an option package.

CARS BUILT FOR THE WAY YOU LIVE

At Toyota, we build cars for how you live. From building advanced safety features designed to help prevent crashes to driving cross-country to understand how we can make your driving experience better, our work starts with understanding your needs. Building cars for how you live also means thinking about tomorrow — from fuel efficiency and environmental innovations, to things beyond cars, like a bicycle that you can control with your mind. And because what we learn building cars can help improve lives in other places, we do things like help communities rebuild their homes quickly after a disaster and work with soup kitchens to help them serve more people faster. Toyota. Built for how you live. Together we are going places.

DISCLOSURES

1. Toyota strives to build vehicles to match customer interest and thus they typically are built with popular options and option packages. Not all options/packages are available separately and some may not be available in all regions of the country. See toyota.com for information about options/packages commonly available in your area. If you would prefer a vehicle without any or with different options, contact your dealer to check for current availability or the possibility of placing a special order. Color(s) depicted may vary based on multiple factors, including ambient lighting and the format in which it is being viewed (e.g., computer, mobile device or print).

2. Rigid Industries® is a registered trademark of JST Performance, LLC d/b/a Rigid Industries. 3. Do not exceed 120V. See *Owner's Manual* for additional limitations and details. 4. Standard on V6 models. Available as part of the SR5 Appearance Package. 5. The Panoramic View Monitor does not provide a comprehensive view of the area surrounding the vehicle. You should also look around outside your vehicle and use your mirrors to confirm surrounding clearance. Environmental conditions may limit effectiveness and view may become obscured. See *Owner's Manual* for additional limitations and details. 6. The Multi-terrain Monitor does not provide a comprehensive view of the area surrounding the vehicle. You should also look around outside your vehicle and use your mirrors to confirm clearance. Environmental conditions may limit effectiveness and view may become obscured. See *Owner's Manual* for additional limitations and details. 7. Qi wireless charging may not be compatible with all mobile phones, MP3/WMA players and like models. When using the wireless charging system, avoid placing metal objects between the wireless charger and the mobile device when charging is active. Doing so may cause metal objects to become hot and could cause burns. 8. Apps and services are subject to change at any time without notice. Data charges may apply. Apple CarPlay® functionality requires a compatible iPhone® connected with an approved data cable into the USB media port. Apple CarPlay® is a registered trademark of Apple Inc. 9. Vehicle user interface is a product of Google and its terms and privacy statement apply. To use Android Auto on your car display, you'll need an Android Auto compatible vehicle or aftermarket stereo, an Android phone running Android 5.0 (Lollipop) or higher, and the Android Auto app. Google, Android and Android Auto are trademarks of Google LLC. 10. Amazon, Alexa and all related logos are trademarks of Amazon.com, Inc. or its affiliates. Requires adequate signal strength and smartphone. See applicable application for details. Not all Amazon Alexa functionality is available for in-vehicle use and some functions depend on smart home technology. Download of the Toyota+Alexa app is required to begin in-vehicle use of Alexa. Data charges may apply. Apps, prices and services subject to change at any time without notice. To learn more, go to <https://www.toyota.com/audio-multimedia>. To learn more about Toyota's data collection, use, sharing and retention, please visit <https://www.toyota.com/privacyvts/>. 11. Advanced voice recognition capabilities vary by head unit. 12. The Bluetooth® word mark and logos are registered trademarks owned by Bluetooth SIG, Inc., and any use of such marks by Toyota is under license. A compatible Bluetooth®-enabled phone must first be paired. Phone performance depends on software, coverage and carrier. 13. SiriusXM® audio services require a subscription sold separately by Sirius XM Radio Inc. If you decide to continue service after your trial, the subscription plan you choose will automatically renew thereafter and you will be charged according to your chosen payment method at then-current rates. Fees and taxes apply. To cancel, you must call SiriusXM at 1-866-635-2349. See SiriusXM Customer Agreement for complete terms at www.siriusxm.com. All fees and programming subject to change. Not all vehicles or devices are capable of receiving all services offered by SiriusXM. Current information and features may not be available in all locations, or on all receivers. ©2019 Sirius XM Radio Inc. SiriusXM and all related marks and logos are trademarks of Sirius XM Radio Inc. 14. SiriusXM All Access trial length and service availability may vary by model, model year or trim. 15. Connected Services depends on an operative telematics device, a cellular connection, navigation map data, GPS signal strength and other factors outside of Toyota's control, all of which can limit system functionality or availability, including access to response center and emergency support. Service may vary by vehicle and region. Apps and services subject to change at any time without notice. See toyota.com/connected-services for details. To learn about Toyota's data collection, use, sharing and retention, please visit <https://www.toyota.com/privacyvts/>. Stolen vehicle police report required to use Stolen Vehicle Locator. 16. Toyota Safety Connect® depends on an operative telematics device, a cellular connection, navigation map data and GPS signal strength and other factors outside of Toyota's control, all of which can limit system functionality or availability, including access to response center and emergency support. Stolen vehicle police report required to use Stolen Vehicle Locator. Registration required. Service subject to change at any time without notice. Terms and conditions of subscription service agreement apply. Service may vary by vehicle and region. See usage precautions and service limitations in *Owner's Manual* and at toyota.com/connected-services/ for additional details. To learn about Toyota's data collection, use, sharing and retention, please visit <https://www.toyota.com/privacyvts/>. 17. The Safety Connect® trial period is at no extra cost and begins on the original date of purchase or lease of a new vehicle. After the trial period expires, enrollment in paid subscription is required to access the service. 18. Eligible vehicle and wireless service required. Coverage and service not available everywhere. Valid in the contiguous U.S. and Alaska. Do not drive distracted. Go to att.com/toyota for terms and conditions. 19. The Wi-Fi Connect trial period is at no extra cost and begins on the date of activation. After the trial period expires, enrollment in a paid subscription is required to access the service. Terms and conditions apply. 20. Dynamic Navigation depends on an operative telematics device, a cellular connection, navigation map data and GPS signal strength, and other factors outside of Toyota's control, which can limit system functionality or availability. Services not available in every city or roadway. Use common sense when relying on information provided. Service may vary by vehicle and region. Registration is required. Terms and conditions of subscription services agreement apply. See *Owner's Manual* and <http://toyota.com/connected-services> for additional limitations and details. To learn about Toyota's data collection, use, sharing and retention, please visit <https://www.toyota.com/privacyvts/>. 21. HD Radio™ Technology manufactured under license from iBiquity Digital Corporation U.S. and Foreign Patents. HD Radio™ and the HD, HD Radio, and "Arc" logos are proprietary trademarks of iBiquity Digital Corp. 22. The Dynamic Navigation three year trial period begins on the original date of purchase or lease of a new vehicle. After the trial period expires, enrollment in paid subscription is required to access the service. 23. Dynamic voice recognition capabilities vary by head unit. 24. Destination Assist depends on an operative telematics device, a cellular connection, navigation map data and GPS signal strength and other factors outside of Toyota's control, which can limit system ability functionality or availability. Use common sense when relying on this information. Valid in the continental U.S. Registration required. Services subject to change at any time without notice. Terms and conditions of subscription services agreement apply. See *Owner's Manual* and toyota.com/connected-services for additional limitations and details. To learn about Toyota's data collection, use, sharing and retention, please visit <https://www.toyota.com/privacyvts/>. 25. The Destination Assist Connect trial period is at no extra cost and begins on the original date of purchase or lease of a new vehicle. After the trial period expires, enrollment in a paid subscription is required to access the service. 26. Information provided is based on the last time data was collected from the vehicle and may not be up to date. Service Connect depends on an operative telematics device, a cellular connection, navigation map data, GPS signal strength and other factors outside of Toyota's control, which can limit functionality or availability. Valid in the continental U.S. Registration required. Service subject to change at any time without notice. Terms and conditions of subscription service agreement apply. See usage precautions and service limitations in *Owner's Manual* and at toyota.com/connected-services/ for additional details. To learn about Toyota's data collection, use, sharing and retention, please visit <https://www.toyota.com/privacyvts/>. 27. The Service Connect trial period is at no extra cost and begins on the original date of purchase or lease of a new vehicle. After the respective trial period expires, enrollment in paid subscription is required to access the service. 28. Use only if aware of circumstances surrounding vehicle and it is legal and safe to do so (e.g., do not remotely start engine if vehicle is in an enclosed space or vehicle is occupied by a child). Remote Connect depends on an operative telematics device, a cellular connection, GPS signal strength and other factors outside of Toyota's control, which can limit system functionality and availability. Service may vary by vehicle and region. Registration and app download required. Terms and conditions of subscription service agreement apply. Data charges may apply. Remote start/stop not available on manual-transmission-equipped vehicles. Services subject to change at any time without notice. See usage precautions and service limitations in *Owner's Manual* and at <https://www.toyota.com/connected-services/> for additional details. To learn about Toyota's data collection, use, sharing and retention, please visit <https://www.toyota.com/privacyvts/>. 29. The Remote Connect trial period is at no extra cost and begins on the original date of purchase or lease of a new vehicle. After the trial period expires, enrollment in a paid subscription is required to access the service. Terms and conditions apply. 30. JBL® and Clari-Fi® are registered trademarks of Harman International Industries, Inc. 31. May not be compatible with all mobile phones, MP3/WMA players and like models. 32. This floor mat/floor liner was designed specifically for use in your model and model year vehicle and SHOULD NOT be used in any other vehicle. To avoid potential interference with pedal operation, each mat/liner must be secured with its fasteners. Do not install a floor mat/floor liner on top of an existing floor mat/floor liner. 33. The Smart Key System may interfere with some pacemakers or cardiac defibrillators. If you have one of these medical devices, please talk to your doctor to see if you should deactivate this system. 34. HomeLink® and the HomeLink® house icon are registered trademarks of Gentex Corporation. 35. Toyota Safety Sense™ effectiveness is dependent on many factors including road, weather and vehicle conditions. Drivers are responsible for their own safe driving. Always pay attention to your surroundings and drive safely. See *Owner's Manual* for additional limitations and details. 36. The Pre-Collision System (PCS)

DISCLOSURES (continued)

with Pedestrian Detection (PD) is designed to determine if impact is imminent and help reduce impact speed and damage in certain frontal collisions involving a vehicle or a pedestrian. PCS w/PD is not a substitute for safe and attentive driving. System effectiveness depends on many factors, such as speed, size and position of pedestrian and weather, light and road conditions. See *Owner's Manual* for additional limitations and details. **37.** Lane Departure Alert with Sway Warning System is designed to read visible lane markers under certain conditions, and provide visual and audible alerts when it detects a pattern of vehicle movement that might indicate driver inattention or drowsiness. It is not a collision-avoidance system or a substitute for safe and attentive driving. Effectiveness is dependent on many factors including road, weather and vehicle conditions. See *Owner's Manual* for additional limitations and details. **38.** Automatic High Beams operate at speeds above 25 mph. Factors such as a dirty windshield, weather, lighting and terrain limit effectiveness, requiring the driver to manually operate the high beams. See *Owner's Manual* for additional limitations and details. **39.** Dynamic Radar Cruise Control is designed to assist the driver and is not a substitute for safe and attentive driving practices. System effectiveness is dependent on many factors including road, weather and traffic conditions. DRCC not available on manual transmissions. See *Owner's Manual* for additional limitations and details. **40.** Vehicle Stability Control is an electronic system designed to help the driver maintain vehicle control under adverse conditions. It is not a substitute for safe and attentive driving practices. Factors including speed, road conditions, weather and driver steering input can all affect whether VSC will be effective in preventing a loss of control. See *Owner's Manual* for additional limitations and details. **41.** Brake Assist is designed to help the driver take advantage of ABS and is not a substitute for safe driving practices. Braking effectiveness also depends on proper vehicle maintenance, tire and road conditions. See *Owner's Manual* for additional limitations and details. **42.** Smart Stop Technology® operates only in the event of certain contemporaneous brake and accelerator pedal applications. When engaged, the system will reduce power to help the brakes bring the vehicle to a stop. Factors including speed, road conditions and driver input can all impact stopping distance. Smart Stop Technology® is not a substitute for safe and attentive driving and does not guarantee instant stopping. See *Owner's Manual* for additional limitations and details. **43.** Airbag systems are Supplemental Restraint Systems and are designed to inflate only under certain conditions and in certain types of severe collisions. To decrease the risk of injury from an inflating airbag, always wear seatbelts and sit upright in the middle of the seat as far back as possible. Do not put objects in front of an airbag or around the seatback. Do not use a rearward-facing child seat in any front passenger seat. See *Owner's Manual* for additional limitations and details. **44.** Active front headrests can help reduce the extent of whiplash in certain types of rear-end collisions. **45.** The Tire Pressure Monitor System alerts the driver when tire pressure is critically low. For optimal tire wear and performance, tire pressure should be checked regularly with a gauge; do not rely solely on the monitor system. See *Owner's Manual* for additional limitations and details. **46.** Do not rely exclusively on the Blind Spot Monitor. Always look over your shoulder and use your turn signal. There are limitations to the function, detection and range of the monitor. See *Owner's Manual* for additional limitations and details. **47.** Do not rely exclusively on the Rear Cross-Traffic Alert system. Always look over your shoulder and use your mirrors to confirm rear clearance. There are limitations to the function, detection and range of the system. See *Owner's Manual* for additional limitations and details. **48.** Rear parking assist sonar is designed to warn drivers of potential rear collisions at speeds of 6 mph or less. Certain vehicle and environmental factors, including an object's shape and composition, may affect the ability of the rear parking assist sonar to detect it. Always look around outside the vehicle and use mirrors to confirm clearance. See *Owner's Manual* for additional limitations and details. **49.** Crawl Control is designed for driving on difficult terrain at low speeds and assists the driver by controlling acceleration and braking, allowing the driver to focus on steering. The Tacoma is designed to meet off-road driving requirements, but off-roading is inherently dangerous. Always wear seatbelts. See *Owner's Manual* for additional limitations and details. **50.** Hill Start Assist Control is designed to help minimize backward rolling on steep ascents. It is not a substitute for safe driving judgment and practices. Factors including speed, grade, surface conditions and driver input can all affect whether HAC will be effective in preventing a loss of control. See *Owner's Manual* for additional limitations and details. **51.** Before towing, confirm your vehicle and trailer are compatible, hooked up and loaded properly and that you have any necessary additional equipment. Do not exceed any Weight Ratings and follow all instructions in your *Owner's Manual*. The maximum you can tow depends on base curb weight plus the total weight of any cargo, occupants, and added vehicle equipment. "Added vehicle equipment" includes additional standard/optional equipment and accessories added by the manufacturer, dealers, and/or vehicle owners. The only way to be certain of your vehicle's exact curb weight is to weigh your vehicle without passengers or cargo. **52.** Trailer-Sway Control (TSC) is an electronic system designed to help the driver maintain vehicle control under adverse conditions. It is not a substitute for safe driving practices. Factors including speed, road conditions, weather and driver steering input can all affect whether TSC will be effective in preventing a loss of control. See *Owner's Manual* for additional limitations and details. **53.** The engine immobilizer is a state-of-the-art anti-theft system that is initiated when you insert your key into the ignition switch or bring a Smart Key fob into the vehicle. The engine will only start if the code in the transponder chip inside the key/fob matches the code in the vehicle's immobilizer. The transponder chip is embedded in the key/fob and can be costly to replace. If you lose a key or fob, your Toyota dealer can help or go to www.aloa.org to find a qualified locksmith in your area who can perform high-security key service. **54.** Auto LSD is an electronic, brake-actuated limited-slip differential that automatically activates when VSC is disengaged at low speeds. See *Owner's Manual* for additional limitations and details. **55.** Bilstein® is a registered trademark of ThyssenKrupp Bilstein GmbH FED REP GERMANY. **56.** FOX® is a registered trademark of FOX Factory, Inc. (©FOX Factory, Inc.) **57.** 4480 with Long Bed. **58.** 4230 with Long Bed. **59.** Payload Capacity is the calculation of GVWR minus curb weight and should be used for comparison purposes only. The maximum amount of passenger and cargo weight your vehicle can carry is the Load Carrying Capacity indicated on the label(s) on the driver's doorjamb. **60.** 1120 with Long Bed. **61.** 660 with Long Bed. **62.** 6600 with Long Bed. **63.** 2020 preliminary mpg estimates determined by Toyota. EPA estimates not available at time of posting. Actual mileage will vary. **64.** Replaces chrome rear bumper with color-keyed rear bumper on TRD Off-Road models. **65.** Vehicle's projected resale value is specific to the 2019 model year. For more information, visit Kelley Blue Book's KBB.com. Kelley Blue Book is a registered trademark of Kelley Blue Book Co., Inc. **66.** The Toyota Tacoma is designed to meet most off-road driving requirements, but off-roading is inherently dangerous and may result in vehicle damage. Toyota encourages responsible operation to help protect you, your vehicle and the environment. Seatbelts should be worn at all times. Do not allow passengers to ride in cargo area. **67.** Goodyear® is a registered trademark of The Goodyear Tire & Rubber Company. **68.** Wrangler® is a registered trademark of Goodyear Tire & Rubber Company. **69.** Kevlar® is a registered trademark of E. I. du Pont de Nemours and Company. **70.** Do not use an automatic car wash if vehicle is equipped with Desert Air Intake accessory. Damage to vehicle may result which falls outside of the vehicle's warranty coverage. **71.** The backup camera does not provide a comprehensive view of the rear area of the vehicle and you should also look around the vehicle, using mirrors to confirm rearward clearance. Environmental conditions may limit effectiveness and view may become obscured. See *Owner's Manual* for additional limitations and details. **72.** The universal tablet holder is intended for passengers only. Drivers should always be sure to obey traffic regulations and maintain awareness of the road and traffic conditions at all times. Use of aftermarket accessories may pose an increased risk of injury to occupants in the event of an accident. Tablet sold separately. **73.** Not all smartwatches are compatible with Remote Connect: Samsung Gear, Fitbit, Garmin are not compatible. **74.** Requires adequate cellular coverage and GPS signal strength. May not work in all areas. Service may vary by vehicle and region. See Toyota Dealer for details and exclusions. **75.** iPhone® is a registered trademark of Apple Inc. All rights reserved. **76.** Apps, prices and services vary by phone carrier and are subject to change at any time without notice. Subject to smartphone connectivity and capability. Data charges may apply. Skills and services subject to change at any time without notice. **77.** Lane Departure Alert is designed to read visible lane markers under certain conditions, and provide visual and audible alerts when lane departure is detected. It is not a collision-avoidance system or a substitute for safe and attentive driving. Effectiveness is dependent on many factors including road, weather and vehicle conditions. See *Owner's Manual* for additional limitations and details. **78.** Cargo and load capacity limited by weight and distribution. Always properly secure cargo and cargo area. **79.** Camera accessory not included with purchase. **80.** Available only for vehicles equipped with factory security and factory remote keyless entry system or Smart Key System. **81.** Genuine Toyota Paint Protection Film by 3M™ is designed for specific sections of the vehicle most prone to chipping and may vary depending on vehicle model. Select applications may require an additional charge. Toyota Genuine Accessory Warranty only applies when installation is performed by a trained Toyota-approved installer. See Toyota dealer for details. **82.** Do not overload your vehicle. See *Owner's Manual* for weight limits and restrictions. **83.** Available for vehicles with factory remote keyless entry.

Toyota strives to build vehicles to match customer interest and thus they typically are built with popular options and option packages. Not all options/packages are available separately and some may not be available in all regions of the country. See toyota.com for information about options/packages commonly available in your area. If you would prefer a vehicle without any or with different options, contact your dealer to check for current availability or the possibility of placing a special order.

Color(s) depicted may vary based on multiple factors, including ambient lighting and the format in which it is being viewed (e.g., computer, mobile device or print).

Toyota Tacoma is designed to meet most off-road driving requirements. Abusive use may result in bodily harm or damage. Toyota encourages responsible operation to protect you, your vehicle and the environment. Seatbelts should be worn at all times.

Please do not allow passengers to ride in the cargo area. Towing hitch receiver/ball mount kits are not intended to provide crash protection. For details on vehicle specifications, standard features and available equipment in your area, contact your Toyota dealer. A vehicle with particular equipment may not be available at the dealership. Ask your Toyota dealer to help locate a specifically equipped vehicle.

All information presented herein is based on data available at the time of posting, is subject to change without notice and pertains specifically to mainland U.S.A. vehicles only.

Vehicles shown may be prototypes and/or shown with options. Actual models may vary.