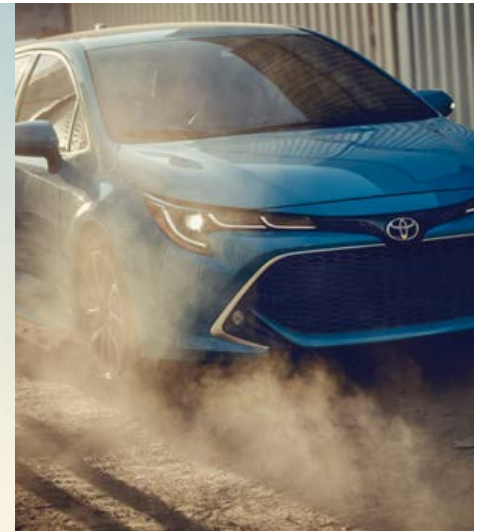


2019 Corolla Hatchback



Ready. Set. Send it.

The all-new 2019 Toyota Corolla Hatchback keeps the fun going. Low to the ground and lightweight, this energetic hatch will reintroduce you to the thrill of driving. Its sporty exterior highlights the practical five-door design, while the interior surrounds you in comfort with plenty of room to take friends along for the ride. Corolla Hatchback is also up to speed with the latest standard tech like Apple CarPlay^{®8} compatibility and our state-of-the-art Toyota Safety Sense[™] 2.0 (TSS 2.0)³¹ that helps provide peace of mind on every trip. So, whether you're running to the store or driving to the lake, Corolla Hatchback finds fun around every corner.

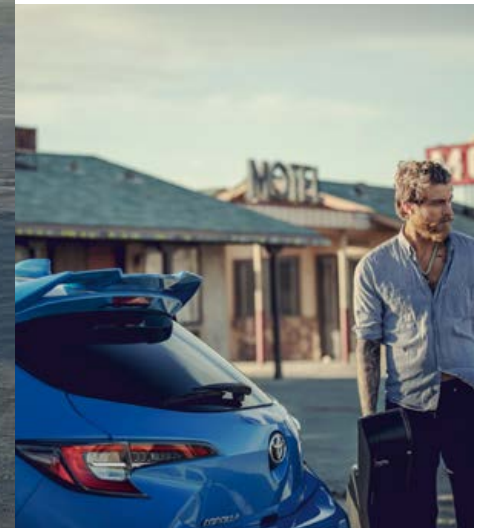


—
“Our designers went all out. They took our new platform and shaped one striking physique.”
—



Left to right: **XSE** shown in Blue Flame with available accessory rear window spoiler and **SE** shown in Blizzard Pearl.⁴⁶

See numbered footnotes in Disclosures section.



Fun at first sight.

Corolla Hatchback has unforgettable charisma. Its all-new sporty Hatchback design makes a lasting first impression and inspires you to go out and make more happen. Coming down the road, its polished available chrome grille surround reels in eyes while its distinctive rear spoiler acts as its signature sign-off. After you park, you'll catch yourself looking over your shoulder, trying to steal one more glance before you walk away.



18-IN. ALLOY WHEELS

Available 18-in. alloy wheels add to the unique profile of Corolla Hatchback. Every stoplight is a chance to make a new impression. Every spoke on the wheels is crafted to enhance style and performance.



CHROME TAILPIPE DIFFUSER

It's the little things that give Corolla Hatchback its sporty street cred. The standard chrome tailpipe diffuser captures eyes from every corner and ensures that this Hatchback's good looks just can't be ignored.



LED HEADLIGHTS

The fun doesn't stop after the sun goes down. Stylish headlights featuring distinct LED Daytime Running Lights (DRL) flaunt Corolla Hatchback's charisma and light up the road.

STYLING



XSE shown in Blue Flame with available accessory rear window spoiler.

Rev up your heartbeats per minute.

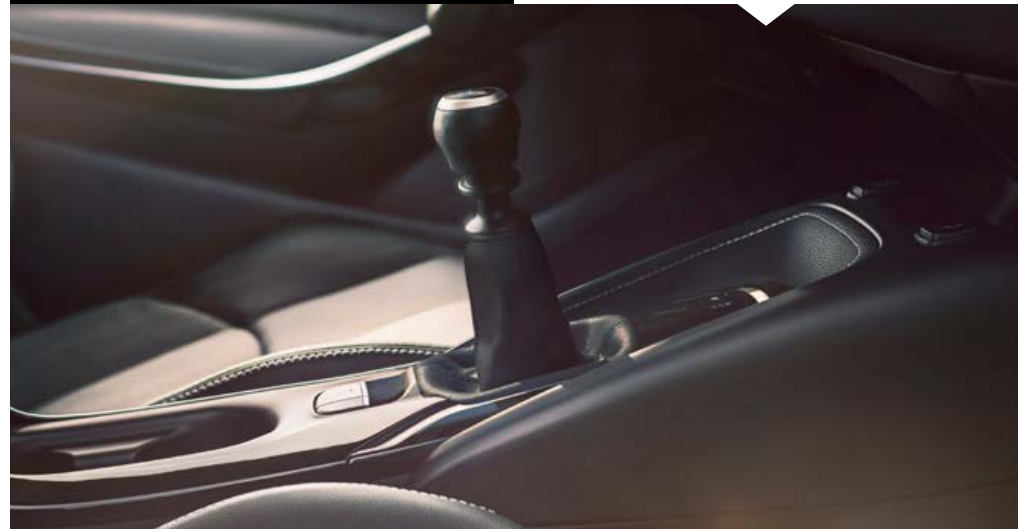
Corolla Hatchback was engineered to reintroduce you to the thrill of driving. Under the hood, its 2.0L Dynamic Force Engine releases endorphins the moment you step on the gas. With an all-new suspension combined with its low, lightweight body, Corolla Hatchback will punch up your enthusiasm around every curve. Rest assured, fast-paced fun is waiting for you the second you start the engine.

PADDLE SHIFTERS

Hone your paddle-shifting skills with our Dynamic Shift-CVT, which combines the immediate response of a traditional First gear with the efficiency of a Continuously Variable Transmission (CVT).

6-SPEED INTELLIGENT MANUAL TRANSMISSION (iMT)

Three pedals. Six forward gears. One incredible driving experience. Corolla Hatchback's available 6-speed Intelligent Manual Transmission (iMT) features close-ratio gears down low for spirited acceleration, with taller gears up top for optimized fuel economy while cruising. It also incorporates an intelligent rev-matching feature, helping to reduce transmission shock when downshifting.



PERFORMANCE



XSE shown in Blue Flame with available accessory rear window spoiler.

Fun for all five senses.

Corolla Hatchback doesn't compromise on comfort. Premium piano-black accents, soft-touch materials and contrast stitching on the dash and doors show that no inch of the interior was overlooked. More premium features, like available leather-trimmed seats and dual zone automatic climate control, naturally complement Corolla Hatchback's fun-to-drive DNA. Just like its performance, Corolla Hatchback's interior doesn't chase a feeling — it creates it.



SOFT-TOUCH INTERIOR AND AUTO WINDOWS

Corolla Hatchback's premium features like soft-touch materials on the dash and doors shift your senses into the moment. Plus, automatic windows power up and down at the touch of the button to instantly elevate the drive. No matter where you're going, Corolla Hatchback was designed to make sure driving doesn't feel like a chore.



HEATED SEATS

This driver-centric cabin doesn't settle on comfort. With just the press of a button, the available heated seats will get toasty in no time so you can stop worrying about the cold and start enjoying every turn.



CONTRAST STITCHING

Complementing Corolla Hatchback's driver-centric feel is available contrast stitching. Using genuine thread, this subtle design touch adds visual interest and contemporary style. It's one of many quality details that helps Corolla Hatchback's new interior stand out.

PREMIUM INTERIOR



XSE interior shown in Black combination leather trim.

Shift into the moment.

Step inside Corolla Hatchback and you only think about one thing: driving. Its driver-centric interior offers unmatched comfort and control. An available 7-in. Multi-Information Display (MID) helps you stay focused around every turn by bringing driving information right before your eyes, while ergonomically designed sport seats heighten your focus without sacrificing your comfort. With Amazon Alexa⁴⁷ connectivity, you can simply ask to play music, read the news, control your smart home, tell a joke and more — Alexa will respond instantly.

The Toyota+Alexa App requires an Android™ smartphone using version 5.0 and above (Apple iOS available early 2019).

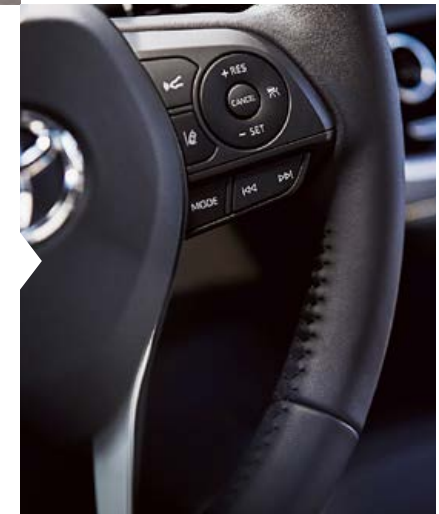


DUAL ZONE AUTOMATIC CLIMATE CONTROL

You like it cool. Your passenger likes it warm. And with Corolla Hatchback's available dual zone automatic climate control, you can both ride in total comfort.

LEATHER STEERING WHEEL AND PIANO-BLACK ACCENTS

Even your fingertips feel the thrill of driving. Corolla Hatchback's standard leather-trimmed steering wheel and shift knob fit comfortably between your hands while available piano-black accents perfectly complement the refined interior.



SMART KEY SYSTEM⁴⁰

Don't waste time fumbling for your keys. Corolla Hatchback comes standard with the Smart Key System that lets you unlock the doors and trunk, plus start the engine, with just the push of a button — all while the key fob sits comfortably in your pocket or bag.



FUNCTIONAL INTERIOR



XSE interior shown in Black combination leather trim.

Up to speed with the latest tech.

Corolla Hatchback has street smarts. Remotely lock/unlock doors, start/stop the engine,⁴⁸ find your vehicle in a parking lot and get vehicle status notifications²⁰ using your compatible smartwatch.⁴⁹ Standard Apple CarPlay^{®8} compatibility takes the things you want to do with your iPhone^{®10} while driving and puts them right on Corolla Hatchback's 8-in. touch-screen display. In short, Corolla Hatchback puts the latest technology and infotainment at your control by touch or voice commands.

WEARABLE CONNECTIVITY

Newly enhanced available Remote Connect²⁰ gives you amazing control of Corolla Hatchback, all from your Apple Watch^{®57} or Android[™] smartwatch.⁴⁹ Through touch or voice commands, you can locate your vehicle, lock or unlock the doors or even start the engine.⁴⁸

JBL^{®17} SOUND SYSTEM

Make every seat a front-row seat. Corolla Hatchback's available Entune[™] 3.0⁵ Premium Audio with JBL[®] w/Clari-Fi^{™17} uses eight speakers to deliver an enhanced sound quality and hit every high note.





XSE interior shown in Black combination leather trim.

STYLING



XSE shown in Blue Flame with available accessory rear window spoiler.

Safe from start to finish.

While city streets can be exciting, they're also unpredictable. That's why every Corolla Hatchback comes with intelligent safety technology. The available Blind Spot Monitor (BSM)² is designed to alert you if another vehicle is in your blind spot. And its available Adaptive Front-Lighting System (AFS)⁴¹ "follows" your front wheels when you turn. Safe to say, Corolla Hatchback was designed to help make the open road a safer playground.



BLIND SPOT MONITOR²

By illuminating a warning signal on the applicable outside mirror, the available Blind Spot Monitor (BSM) is designed to alert you to vehicles that may be hiding in your vehicle's blind spot.



STAR SAFETY SYSTEM™

Every new Corolla Hatchback is built with our Star Safety System,[™] an advanced integration of active safety technologies designed to enhance traction, braking and more.



ADAPTIVE HEADLIGHTS

Corolla Hatchback is loaded with technology designed to enhance every drive — even at night. The available Adaptive Front-Lighting System (AFS)⁴¹ "follows" your front wheels when you turn and lights up the road before you.

SAFETY



XSE shown in Blue Flame.



Designed for safety.

Toyota Safety Sense™ 2.0 (TSS 2.0)³¹ is a bundle of active safety features standard on every 2019 Corolla Hatchback. These innovative features were designed to help protect you and your passengers from harm.



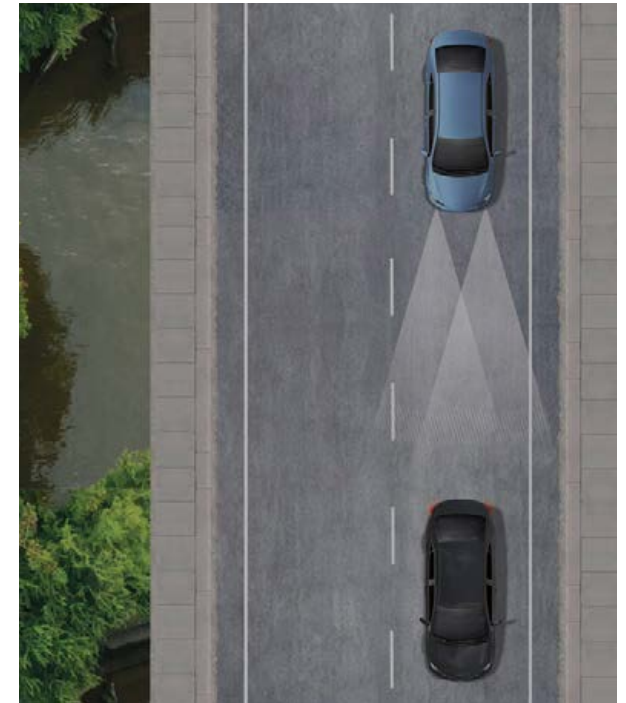
PRE-COLLISION SYSTEM³² WITH PEDESTRIAN DETECTION³³

Pre-Collision System with Pedestrian Detection (PCS w/PD) helps keep the road safe by detecting a vehicle, pedestrian or bicyclist in certain situations. The latest system has enhanced low-light capabilities to help detect a pedestrian at night. By combining millimeter-wave radar with a camera capable of shape recognition, the system provides an audio/visual alert, warning you of a possible collision under certain circumstances. If you don't react, the system is designed for automatic braking support to help mitigate the potential for a collision.



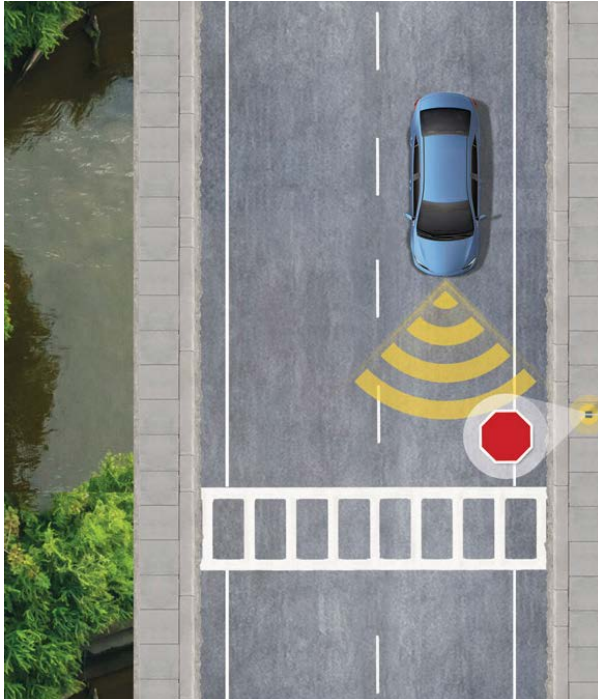
LANE DEPARTURE ALERT WITH STEERING ASSIST³⁵ AND ROAD EDGE DETECTION

Using Road Edge Detection or by detecting visible lane markings, the Lane Departure Alert with Steering Assist (LDA w/SA) issues both an audible alert and visual warning on the MID screen if an inadvertent lane departure is detected. If the system determines that the driver is not taking corrective steering action, the Steering Assist function is designed to initiate and provide gentle corrective steering to help keep Corolla Hatchback in the lane.



AUTOMATIC HIGH BEAMS³⁶

Automatic High Beams (AHB) are a safety system designed to help you see more clearly at night — without distracting other drivers. Designed to activate at speeds above 25 mph, AHB rely on an in-vehicle camera to help detect the headlights of oncoming vehicles and taillights of preceding vehicles, then automatically toggle between high and low beams accordingly to provide the appropriate amount of light. By using high beams more frequently, the system may allow earlier detection of pedestrians and obstacles.



ROAD SIGN ASSIST³⁷

Corolla Hatchback's Road Sign Assist (RSA) helps keep the road safe. Using a forward-facing intelligent camera, Road Sign Assist is designed to detect speed limit signs, stop signs and yield signs, and displays them on the MID.



FULL-SPEED RANGE DYNAMIC RADAR CRUISE CONTROL^{38, 39}

Intended for highways and similar to "constant speed" cruise control, available Full-Speed Range Dynamic Radar Cruise Control (DRCC) lets you drive at a preset speed. DRCC uses vehicle-to-vehicle distance control, which is designed to adjust your speed, to help you maintain a preset distance from vehicles ahead of you that are driving at a slower speed. DRCC uses a front-grille-mounted radar and an in-vehicle camera designed to detect vehicles and their distance. If a driver is traveling slower than you, or within your preset range, DRCC is designed to automatically slow your vehicle down without deactivating cruise control. If DRCC determines you need to slow down more, an audio and visual alert notifies you and brakes may be applied. When there's no longer a vehicle driving slower than your preset speed in front of you, DRCC will then accelerate and regular cruise control will resume.



LANE TRACING ASSIST^{34, 50}

When the available Full-Speed Range Dynamic Radar Cruise Control (DRCC)^{38, 39} is enabled and lane markers are detectable, Lane Tracing Assist (LTA) uses the lines on the road and preceding vehicles to help keep the vehicle centered while also displaying the vehicle's position on the MID screen. The system was designed to reduce driver strain and increase convenience, and benefits drivers most during traffic jams — but can be turned off using the MID.



XSE interior shown in Black combination leather trim with available Entune™ 3.0⁵ Premium Audio.

See numbered footnotes in Disclosures section.

COROLLA HATCHBACK MODELS



SE

Powertrain

- 2.0L 4-Cylinder Dynamic Force Engine
- Dynamic Shift Continuously Variable Transmission (CVT)
- Available Intelligent Manual Transmission (iMT)
- 32 city/42 highway/36 combined est. mpg⁵¹

Exterior Features

- LED headlights and LED Daytime Running Lights (DRL) with auto on/off feature
- 16-in. twin-spoke alloy wheels
- Front dark gray grille surround
- Color-keyed heated power outside mirrors with turn signal indicators
- Rear chrome diffuser

Interior Features

- Entune™ 3.0⁵ Audio and App Suite⁵
- Apple CarPlay^{®8} compatible
- Amazon Alexa⁴⁷ compatible
- 4.2-in. Multi-Information Display (MID)
- Leather-wrapped steering wheel
- Fabric sport seats with 6-way adjustable driver's seat
- 60/40 split fold-down rear seats with center armrest and cup holders
- Electric Parking Brake (EPB)²³ with Brake Hold²⁴

Safety/Convenience

- Automatic transmission: Toyota Safety Sense™ 2.0 (TSS 2.0)³¹ — Pre-Collision System³² with Pedestrian Detection³³ (PCS w/PD) with cyclist detection and improved low-light capabilities, Lane Tracing Assist (LTA)^{34, 50} Lane Departure Alert with Steering Assist (LDA w/SA)³⁵ and Road Edge Detection, Automatic High Beams (AHB)³⁶ Road Sign Assist (RSA)³⁷ and Full-Speed Range Dynamic Radar Cruise Control (DRCC)³⁸
- Manual transmission: Toyota Safety Sense™ 2.0 (TSS 2.0)³¹ — Pre-Collision System³² with Pedestrian Detection³³ (PCS w/PD) with cyclist detection and improved low-light capabilities, Lane Departure Alert with Steering Assist (LDA w/SA)³⁵ and Road Edge Detection, Automatic High Beams (AHB)³⁶ Road Sign Assist (RSA)³⁷ and Dynamic Radar Cruise Control (DRCC)³⁹

Options

- Entune™ 3.0⁵ Audio Plus and App Suite⁵
- Blind Spot Monitor (BSM)²



XSE

Adds to or replaces features offered on SE

Powertrain

- 2.0L 4-Cylinder Dynamic Force Engine
- Dynamic Shift Continuously Variable Transmission (CVT)
- Available Intelligent Manual Transmission (iMT)
- 30 city/38 highway/33 combined est. mpg⁵²

Exterior Features

- Adaptive Front-Lighting System (AFS)⁴¹ (automatic)
- Integrated LED fog lights
- 18-in. machined alloy wheels
- Front chrome grille surround
- Color-keyed heated power outside mirrors with turn signal and blind spot warning indicators²

Interior Features

- Entune™ 3.0⁵ Audio Plus and App Suite⁵
- Apple CarPlay^{®8} compatible
- Amazon Alexa⁴⁷ compatible
- 7-in. TFT Multi-Information Display (MID)
- Dual zone climate control
- Leather-trimmed heated sport seats with fabric inserts with 8-way power-adjustable driver's seat

Safety/Convenience

- Automatic transmission: Toyota Safety Sense™ 2.0 (TSS 2.0)³¹ — Pre-Collision System³² with Pedestrian Detection³³ (PCS w/PD) with cyclist detection and improved low-light capabilities, Lane Tracing Assist (LTA)^{34, 50} Lane Departure Alert with Steering Assist (LDA w/SA)³⁵ and Road Edge Detection, Automatic High Beams (AHB)³⁶ Road Sign Assist (RSA)³⁷ and Full-Speed Range Dynamic Radar Cruise Control (DRCC)³⁸
- Manual transmission: Toyota Safety Sense™ 2.0 (TSS 2.0)³¹ — Pre-Collision System³² with Pedestrian Detection³³ (PCS w/PD) with cyclist detection and improved low-light capabilities, Lane Departure Alert with Steering Assist (LDA w/SA)³⁵ and Road Edge Detection, Automatic High Beams (AHB)³⁶ Road Sign Assist (RSA)³⁷ and Dynamic Radar Cruise Control (DRCC)³⁹

Options

- Entune™ 3.0⁵ Premium Audio with JBL^{®17} w/Clari-Fi™¹⁷ and App Suite⁵ (automatic)
- Qi-compatible wireless smartphone charging²² (automatic)

COLOR/TRIM/WHEELS*



Midnight Black Metallic



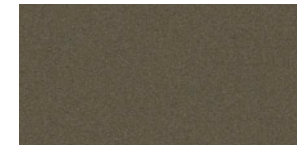
Blue Flame



Galactic Aqua Mica



Smoked Paprika Metallic



Oxide Bronze



Classic Silver Metallic



Blizzard Pearl⁴⁶



SE fabric shown in Black



SE fabric shown in Moonstone



XSE combination leather trim shown in Black



XSE combination leather trim shown in Moonstone



16-in. twin-spoke alloy wheels



18-in. machined alloy wheels

*Not all colors and trims available on all model grades. See dealer for details. See numbered footnotes in Disclosures section.

ACCESSORIES

Add a personal touch to your Corolla Hatchback with Genuine Toyota Accessories. Some accessories may not be available in all regions of the country. See your Toyota dealer for details.

Alloy wheel locks
All-weather floor liners⁵³
Body side moldings
Cargo net — spider⁴⁴
Cargo tote⁴⁴
Cargo tray⁴⁴

Carpet cargo mat⁴⁴
Carpet floor mats⁵³
Coin holder/ashtray cup
Door edge guards
Doorsill protectors
Emergency assistance kit

First aid kit
Mudguards
Paint protection film⁵⁴
Rear bumper protector
Rear window spoiler
Removable cross bars (available late 2018)

TRD air filter
Universal tablet holder⁵⁵



Removable cross bars



Mudguards



Rear window spoiler



Body side moldings



Alloy wheel locks



All-weather floor liners⁵³



Rear bumper protector



Cargo net — spider⁴⁴

FEATURES¹

EXTERIOR	SE	XSE		SE	XSE
LED reflector headlights, LED Daytime Running Lights (DRL) with auto on/off feature	S	S	Color-keyed heated power outside mirrors with turn signal indicators	S	—
LED taillights	S	S	Color-keyed heated power outside mirrors with turn signal indicators and blind spot warning indicators ²	O	S
Integrated LED fog lights	—	S	16-in. twin-spoke alloy wheels with P205/55R16 tires	S	—
Adaptive Front-Lighting System (AFS) ⁴¹	—	O	18-in. machined alloy wheels with P225/40R18 tires	—	S
Dark gray front grille surround	S	—	Chrome rear diffuser	S	S
Chrome front grille surround	—	S			
INTERIOR					
Dual zone automatic climate control with air filter and rear-seat vents	—	S	Entune™ 3.0 ⁵ Audio Plus with App Suite ⁵ — includes six speakers, 8-in. touch-screen, AM/FM/HD Radio, ^{TM14} auxiliary port, USB media port ⁹ , two USB charge ports ⁹ , advanced voice recognition, ¹¹ hands-free phone capability and music streaming ⁴ via Bluetooth ^{®4} wireless technology, Scout [®] GPS Link ⁶ compatible with up to 3-year trial, Siri [®] Eyes Free, ⁷ Apple CarPlay ^{®8} compatible, Amazon Alexa ⁴⁷ compatible, SiriusXM [®] Satellite Radio ¹⁵ with 3-month All Access trial, ¹⁶ Toyota Connected Services — Safety Connect ^{®12} with 3-year trial subscription ⁵⁸ and Wi-Fi Connect Powered by Verizon ¹³ with up to 2GB within 6-month trial. ⁵⁹ See toyota.com/entune for details.	O	S
4.2-in. Multi-Information Display (MID) with odometer outside temperature, fuel economy and trip information, current/average fuel economy, distance to empty, average speed, trip distance with timer, TPMS ³ , scheduled maintenance, compass and warning messages	S	—	Entune™ 3.0 ⁵ Premium Audio with JBL ^{®17} w/Clari-Fi™ ¹⁷ and App Suite ⁵ — includes eight speakers, 8-in. touch-screen, AM/FM/HD Radio, ^{TM14} auxiliary port, USB media port ⁹ , two USB charge ports ⁹ , Dynamic Navigation ¹⁸ with up to 3-year trial, Dynamic POI Search, Dynamic Voice Recognition, hands-free phone capability and music streaming ⁴ via Bluetooth ^{®4} wireless technology, Siri [®] Eyes Free, ⁷ Apple CarPlay ^{®8} compatible, Amazon Alexa ⁴⁷ compatible, SiriusXM [®] Satellite Radio ¹⁵ with 3-month All Access trial, ¹⁶ Toyota Connected Services — Safety Connect ^{®12} with 3-year trial subscription, ⁵⁸ Service Connect ¹⁹ with 3-year trial, ⁶⁰ Remote Connect ²⁰ with 6-month trial, ⁶¹ Wi-Fi Connect Powered by Verizon ¹³ with up to 2GB within 6-month trial ⁵⁹ and Destination Assist Connect ²¹ with 6-month trial. ⁶² See toyota.com/entune for details.	—	O
7-in. TFT Multi-Information Display (MID) with customizable settings, odometer outside temperature, fuel economy and trip information, current/average fuel economy, distance to empty, average speed, trip distance with timer, TPMS ³ , scheduled maintenance, compass and warning messages	—	S	Smart Key System ⁴⁰ on front doors and rear hatch with Push Button Start, remote keyless entry system with lock, unlock, panic functions and remote illuminated entry	S	S
Fabric sport seats with 6-way adjustable driver's seat with seatback pocket; 4-way adjustable front passenger seat with seatback pocket	S	—	Covered center console, armrest and storage	S	S
Leather-trimmed heated sport seats with fabric inserts; 8-way power-adjustable driver's seat with seatback pocket; 4-way adjustable front passenger seat with seatback pocket	—	S	One 12V auxiliary power outlet	S	S
60/40 split fold-down rear seats with center armrest and cup holders	S	S	Two USB 2.0 charging ports ⁹	S	S
Premium leather-trimmed tilt/telescopic steering wheel with audio, Multi-Information Display (MID), paddle shifters, Bluetooth ^{®4} hands-free phone and voice-command controls (automatic transmission only)	S	S	Qi-compatible wireless smartphone charging ²² with charge indicator light	—	O
Premium leather-trimmed tilt/telescopic steering wheel with audio, Multi-Information Display (MID), Bluetooth ^{®4} hands-free phone and voice-command controls (manual transmission only)	S	S	ISOFIX lower anchor (left and right seats)	S	S
2-mode switch (Normal and Sport Modes)	S	S	Top tether anchor	S	S
Vehicle speed-sensing Electric Power Steering (EPS)	S	S	Electric Parking Brake (EPB) ²³ with Brake Hold ²⁴	S	S
Entune™ 3.0 ⁵ Audio with App Suite ⁵ — includes six speakers, 8-in. touch-screen, AM/FM, Scout [®] GPS Link ⁶ compatible with up to 3-year trial, Siri [®] Eyes Free, ⁷ Apple CarPlay ^{®8} compatible, Amazon Alexa ⁴⁷ compatible, auxiliary port, USB 2.0 port ⁹ with iPod ^{®10} connectivity and control, hands-free phone capability, advanced voice recognition ¹¹ and music streaming ⁴ via Bluetooth ^{®4} wireless technology. Toyota Connected Services — Safety Connect ^{®12} with 3-year trial subscription ⁵⁸ and Wi-Fi Connect Powered by Verizon ¹³ with up to 2GB within 6-month trial. ⁵⁹ See toyota.com/entune for details.	S	—			

S = Standard O = Optional — = Not available

WARRANTIES

Every Toyota Car, Truck and SUV is built to exceptional standards. And that's not idle boasting. We back it up with these Limited Warranty Coverages:

Basic: 36 months/36,000 miles (all components other than normal wear and maintenance items).

Powertrain: 60 months/60,000 miles (engine, transmission/transaxle, drive system, seatbelts and airbags).

Rust-Through: 60 months/unlimited miles (corrosion perforation of sheet metal).

Emissions: Coverages vary under Federal and California regulations. Refer to applicable *Warranty and Maintenance Guide* for details.

Accessories: For Genuine Toyota Accessories purchased at the time of the new vehicle purchase, the Toyota Accessory Warranty coverage is in effect for 36 months/36,000 miles from the vehicle's in-service date, which is the same coverage as the Toyota New Vehicle Limited Warranty.

For Genuine Toyota Accessories purchased after the new vehicle purchase the coverage is 12 months, regardless of mileage, from the date the accessory was installed on the vehicle, or the remainder of any applicable new vehicle warranty, whichever provides greater coverage.

You may be eligible for transportation assistance if it's necessary that your vehicle be kept overnight for repairs covered under warranty. Please see your authorized Toyota dealership for further details.

For complete details about Toyota's warranties, please visit www.toyota.com, refer to the applicable *Warranty and Maintenance Guide* or see your Toyota dealer.

SPECIFICATIONS

SAFETY AND CONVENIENCE

	SE	XSE
STAR SAFETY SYSTEM Star Safety System™ — includes Enhanced Vehicle Stability Control (VSC) ²⁵ Traction Control (TRAC), 4-wheel Anti-lock Brake System (ABS), Electronic Brake-force Distribution (EBD), Brake Assist (BA) ²⁶ and Smart Stop Technology® (SST) ²⁷	S	S
Eight airbags ²⁸ — includes driver and front passenger Advanced Airbag System, with dual stage airbags, front side airbags, driver knee airbag and rear side curtain airbags	S	S
Driver and front passenger Whiplash-Injury-Lessening (WIL) ²⁹ seats	S	S
3-point seatbelts for all seating positions; driver-side Emergency Locking Retractor (ELR) and Automatic/Emergency Locking Retractor (ALR/ELR) on all passenger belts	S	S
LATCH (Lower Anchors and Tethers for CHildren) includes lower anchors on outboard rear seats	S	S
Child-protector rear door locks and power window lockout control	S	S
Energy-absorbing collapsible steering column	S	S
Front and rear energy-absorbing crumple zones	S	S
Side-impact door beams	S	S
Tire Pressure Monitor System (TPMS) ³	S	S
Safety Connect ^{®12} — includes Emergency Assistance, Stolen Vehicle Locator, Roadside Assistance ³⁰ and Automatic Collision Notification; with three-year trial subscription. ⁵⁸ See toyota.com/safety-connect for details.	S	S

MECHANICAL/PERFORMANCE

	SE	XSE
ENGINE		
2.0L Dynamic Force 4-Cylinder DOHC 16-Valve D-4S Dual Injection with Dual Variable Valve Timing with intelligence (VVTi); 168 hp @ 6,600 rpm; 155 lb.-ft. @ 4,800 rpm	S	S
EMISSION RATING		
Federal Environmental Protection Agency (EPA) Emission Standard Tier 3, Bin 50	S	S
California Air Resources Board (CARB) Emission Standard: Low Emission Vehicle III (LEV III), Ultra Low Emission Vehicle (ULEV) 50	S	S
TRANSMISSION		
Dynamic Shift Continuously Variable Transmission (CVT)	S	S
6-speed Intelligent Manual Transmission (iMT)	O	O
2-mode switch (Normal and Sport Modes)	S	S
SUSPENSION		
Independent MacPherson strut front suspension with stabilizer bar	S	S
Multi-link rear suspension with stabilizer bar and springs	S	S
BRAKES		
Front 11.5-in. ventilated disc brakes	S	S
Rear 10.5-in. solid disc brakes	S	S
Anti-lock Brake System (ABS)	S	S
Vehicle Stability Control (VSC) ²⁵	S	S
Electric Controlled Brake (ECB)	S	S
Electronic Brake-force Distribution (EBD)	S	S
Electric Parking Brake (EPB) ²³ with Brake Hold ²⁴	S	S
Drive Away Release (DAR)	S	S
Active Cornering Assist (ACA)	S	S
IG-OFF Auto Apply Function (IOA)	S	S

	SE	XSE
Toyota Safety Sense™ 2.0 (TSS 2.0) ³¹ — Pre-Collision System ³² with Pedestrian Detection ³³ (PCS w/PD) with cyclist detection and improved low-light capabilities, Lane Tracing Assist (LTA) ^{34, 50} Lane Departure Alert with Steering Assist (LDA w/SA) ³⁵ and Road Edge Detection, Automatic High Beams (AHB) ³⁶ Road Sign Assist (RSA) ³⁷ and Full-Speed Range Dynamic Radar Cruise Control (DRCC) ³⁸	S (CVT)	S (CVT)
Toyota Safety Sense™ 2.0 (TSS 2.0) ³¹ — Pre-Collision System ³² with Pedestrian Detection ³³ (PCS w/PD) with cyclist detection and improved low-light capabilities, Lane Departure Alert with Steering Assist (LDA w/SA) ³⁵ and Road Edge Detection, Automatic High Beams (AHB) ³⁶ Road Sign Assist (RSA) ³⁷ and Dynamic Radar Cruise Control (DRCC) ³⁹	S (6MT)	S (6MT)
Blind Spot Monitor (BSM) ²	O	S
Hill Start Assist Control (HAC) ⁴²	S	S
Anti-theft system with engine immobilizer ⁴³	S	S
ToyotaCare ⁵⁶ featuring a no cost maintenance plan with roadside assistance ³⁰	S	S

DIMENSIONS

	SE	XSE
EXTERIOR (in.)		
Overall height	57.1	57.1
Overall width	70.5	70.5
Overall length	172.0	172.0
Wheelbase	103.9	103.9
Track (front/rear)	60.3/60.8	60.3/60.8
Ground clearance	5.1	5.1
Coefficient of drag (Cd)	.32	.32

INTERIOR (front/rear) (in.)

Head room	38.4/37.6	38.4/37.6
Shoulder room	53.9/54.5	53.9/54.5
Hip room	53.9/45.5	53.9/45.5
Leg room	42.0/29.9	42.0/29.9
Seating capacity	5	5

WEIGHTS AND CAPACITIES

Curb weight (lb.)		
Manual	3060	3060
Automatic	3060	3060
EPA passenger volume (cu. ft.)	84.6	84.6
Cargo volume (cu. ft.) ⁴⁴	17.8	17.8
Fuel tank (gal.)	13.2	13.2

TIRES

Type: All-Season	S	S
Spare: Temporary	S	S
Size: 205/55R16	S	—
225/40R18	—	S

MILEAGE ESTIMATES (mpg city/highway/combined)⁴⁵

Dynamic Shift Continuously Variable Transmission (CVT)	32/42/36	30/38/33
6-speed Intelligent Manual Transmission (iMT)	28/37/31	28/37/31

See numbered footnotes in Disclosures section.

S = Standard O = Optional – = Not available

CARS BUILT FOR THE WAY YOU LIVE

At Toyota, we build cars for how you live. From building advanced safety features designed to help prevent crashes to driving cross-country to understand how we can make your driving experience better, our work starts with understanding your needs. Building cars for how you live also means thinking about tomorrow — from fuel efficiency and environmental innovations, to things beyond cars, like a bicycle that you can control with your mind. And because what we learn building cars can help improve lives in other places, we do things like help communities rebuild their homes quickly after a disaster and work with soup kitchens to help them serve more people faster. Toyota. Built for how you live. Together we are going places.

DISCLOSURES

1. Toyota strives to build vehicles to match customer interest and thus they typically are built with popular options and option packages. Not all options/packages are available separately and some may not be available in all regions of the country. If you would prefer a vehicle with no or different options, contact your dealer to check for current availability or the possibility of placing a special order. 2. Do not rely exclusively on the Blind Spot Monitor. Always look over your shoulder and use your turn signal. There are limitations to the function, detection and range of the monitor. See *Owner's Manual* for additional limitations and details. 3. The Tire Pressure Monitor System alerts the driver when tire pressure is critically low. For optimal tire wear and performance, tire pressure should be checked regularly with a gauge; do not rely solely on the monitor system. See *Owner's Manual* for details. 4. The Bluetooth® word mark and logos are registered trademarks owned by Bluetooth SIG, Inc., and any use of such marks by Toyota is under license. A compatible Bluetooth®-enabled phone must first be paired. Phone performance depends on software, coverage and carrier. 5. Be sure to obey traffic regulations and maintain awareness of road and traffic conditions at all times. Apps/services vary by phone/carrier; functionality depends on many factors. Select apps use large amounts of data; you are responsible for charges. Apps and services subject to change. See toyota.com/entune for details. 6. The Scout® GPS Link app is compatible with select vehicle models. Availability and accuracy of the information provided by Scout® GPS Link is subject to change at any time without notice and is dependent upon many factors, including smartphone connectivity, capability and cellular reception. Always use safe driving practices and follow all traffic rules. Data charges may apply. Scout® and Telenav® are registered trademarks of Telenav, Inc. 7. Always drive safely, obey traffic laws and focus on the road while driving. Siri® is available on select iPhone®/iPad® models and requires Internet access. Siri® is not available in all languages or all areas and features vary by area. Some Siri® functionality and commands are not accessible in the vehicle. Data charges may apply. See apple.com and phone carrier for details. Siri® is a registered trademark of Apple Inc. 8. Apple CarPlay® is a registered trademark of Apple Inc. Apps and services subject to change at any time without notice. 9. May not be compatible with all mobile phones, MP3/WMA players and like models. 10. iPod® and iPhone® are registered trademarks of Apple Inc. All rights reserved. 11. Advanced voice recognition capabilities vary by head unit. 12. Toyota Safety Connect® is dependent upon an operative telematics device, a cellular connection and other factors outside of Toyota's control, which can limit the ability to reach the response center or receive emergency support or otherwise limit the functionality or availability of the system. Terms and conditions of subscription service agreement apply. To learn about Toyota's data collection, use, sharing and retention, please visit <https://www.toyota.com/privacyvts/>. Stolen vehicle police report required to use Stolen Vehicle Locator. 13. Verizon Wireless is the network provider for Wi-Fi Connect, which uses Verizon's 4G LTE network to transmit data. Data usage applies. Coverage not available everywhere; see vzw.com. See verizonwireless.com/bestnetwork for details. LTE is a trademark of ETSI. Other terms apply. Up to 5 devices can be supported using in-vehicle connectivity. Verizon Wireless data subscription required upon end of 6-month trial period or use of 2 GB data (whichever comes first). Use of Wi-Fi Connect subject to Verizon Wireless' Customer Agreement (verizonwireless.com/legal/notices/customer-agreement/), Privacy Policy (verizon.com/about/privacy/privacy-policy-summary), and data use policies (verizonwireless.com/support/vz-email-legal/). 14. HD Radio™ Technology manufactured under license from iBiquity Digital Corporation U.S. and Foreign Patents. HD Radio™ and the HD, HD Radio, and "Arc" logos are proprietary trademarks of iBiquity Digital Corp. 15. SiriusXM® audio services require a subscription sold separately by Sirius XM Radio Inc. If you decide to continue service after your trial, the subscription plan you choose will automatically renew thereafter and you will be charged according to your chosen payment method at then-current rates. Fees and taxes apply. To cancel, you must call SiriusXM at 1-866-635-2349. See SiriusXM Customer Agreement for complete terms at www.siriusxm.com. All fees and programming subject to change. Not all vehicles or devices are capable of receiving all services offered by SiriusXM. Current information and features may not be available in all locations, or on all receivers. ©2018 Sirius XM Radio Inc. SiriusXM and all related marks and logos are trademarks of Sirius XM Radio Inc. 16. Trial length and service availability may vary by model, model year or trim. 17. JBL® and Clari-Fi™ are registered trademarks of Harman International Industries, Incorporated. 18. Dynamic Navigation is dependent upon an operative telematics device, a cellular connection, navigation map data and GPS satellite signal reception, and other factors outside of Toyota's control, which can limit the ability or functionality of the system. To learn about Toyota Entune™ 3.0's data collection, use, sharing and retention, please visit <https://www.toyota.com/privacyvts/>. Use common sense when relying on information provided. Services and programming subject to change. Services not available in every city or roadway. Subscription required upon end of trial service period. See *Navigation System Owner's Manual* for additional details. 19. Information provided is based on the last time data was collected from the vehicle and may not be up to date. Service Connect is dependent upon an operative telematics device, a cellular connection, navigation map data and GPS satellite signal reception, and other factors outside of Toyota's control, which can limit the ability or functionality of the system. To learn about Toyota Entune™ 3.0's data collection, use, sharing and retention, please visit <https://www.toyota.com/privacyvts/>. 20. Use only if aware of circumstances surrounding vehicle and it is legal and safe to do so (e.g., do not remotely start engine if vehicle is in an enclosed space or vehicle is occupied by a child). Remote Connect is dependent upon an operative telematics device, a cellular connection, navigation map data and GPS satellite signal reception, and other factors outside of Toyota's control, which can limit the ability or functionality of the system. Registration and app download are required. See usage precautions and service limitations in *Owner's Manual*. To learn about Toyota Entune™ 3.0's data collection, use, sharing and retention, please visit <https://www.toyota.com/privacyvts/>. 21. Destination Assist Connect is dependent upon an operative telematics device, a cellular connection, navigation map data and GPS satellite signal reception, and other factors outside of Toyota's control, which can limit the ability or functionality of the system. Use common sense when relying on this information. To learn about Toyota Entune™ 3.0's data collection, use, sharing and retention, please visit <https://www.toyota.com/privacyvts/>. See *Owner's Manual* for additional details. 22. Qi wireless charging may not be compatible with all mobile phones, MP3/WMA players and like models. When using the wireless charging system, avoid placing metal objects between the wireless charger and the mobile device when charging is active. Doing so may cause metal objects to become hot and could cause burns. 23. When the system is on, Automatic Electric Parking Brake is designed to automatically engage the Electric Parking Brake under limited conditions. It may not hold the vehicle under all conditions and does not function when the vehicle is in Reverse. Automatic Electric Parking Brake is not a substitute for manual use of the Electric Parking Brake. See *Owner's Manual* for additional limitations and details. 24. When the system is on, Brake Hold is designed to keep the brakes engaged after the driver brings the vehicle to a complete stop. It may not hold the vehicle under certain conditions and does not function when the vehicle is in Reverse. Brake Hold is not a substitute for safe and attentive driving. See *Owner's Manual* for additional limitations and details. 25. Vehicle Stability Control is an electronic system designed to help the driver maintain vehicle control under adverse conditions. It is not a substitute for safe and attentive driving practices. Factors including speed, road conditions, weather and driver steering input can all affect whether VSC will be effective in preventing a loss of control. See *Owner's Manual* for additional limitations and details. 26. Brake Assist is designed to help the driver take full advantage of the benefits of ABS. It is not a substitute for safe driving practices. Braking effectiveness also depends on proper vehicle maintenance, and tire and road conditions. See *Owner's Manual* for additional limitations and details. 27. Smart Stop Technology® operates only in the event of certain contemporaneous brake and accelerator pedal applications. When engaged, the system will reduce power to help the brakes bring the vehicle to a stop. Factors including speed, road conditions and driver input can all impact stopping distance. Smart Stop Technology® is not a substitute for safe and attentive driving and does not guarantee instant stopping. See *Owner's Manual* for additional limitations and details. 28. All the airbag systems are Supplemental Restraint Systems. All airbags (if installed) are designed to inflate only under certain conditions and in certain types of severe collisions. To decrease the risk of injury from an inflating airbag, always wear seatbelts and sit upright in the middle of the seat as far back as possible. Do not put objects in front of an airbag or around the seatback. Do not use a rearward-facing child seat in any front passenger seat. See *Owner's Manual* for additional limitations and details. 29. Whiplash-Injury-Lessening front seats can help reduce the severity of whiplash injury in certain rear-end collisions. 30. Roadside Assistance coverage is 2 years unlimited mileage. Does not include parts and fluids, except emergency fuel delivery. See Toyota Dealer for details and exclusions. Valid only in the continental U.S. and Alaska. 31. Drivers are responsible for their own safe driving. Always pay attention to your surroundings and drive safely. System effectiveness is dependent on many factors including road, weather and vehicle conditions. See *Owner's Manual* for additional limitations and details. 32. The TSS Pre-Collision System is designed to help avoid or reduce the crash speed and damage in certain frontal collisions only. It is not a substitute for safe and attentive driving. System effectiveness is dependent on many factors including road, weather and vehicle conditions. See *Owner's Manual* for additional limitations and details. 33. The Pedestrian Detection system is designed to detect a pedestrian or bicyclist ahead of the vehicle, determine if impact is imminent and help reduce impact speed. It is not a collision avoidance system and is not a substitute for safe and attentive driving. System effectiveness depends on many factors, such as speed, size and position of pedestrians, and weather, light and road conditions.

DISCLOSURES (continued)

See *Owner's Manual* for additional limitations and details. **34.** Lane Tracing Assist (LTA) is designed to read visible lane markers and detect other vehicles under certain conditions. When potential lane departure is detected, LTA provides a visual warning and either an audible alert or vibration in the steering wheel and can apply a slight steering force. It is not a collision-avoidance system or a substitute for safe and attentive driving. Effectiveness is dependent on many factors including road, weather and vehicle conditions. See *Owner's Manual* for additional limitations and details. **35.** Lane Departure Alert with Steering Assist is designed to read visible lane markers under certain conditions. It provides a visual and audible alert, and slight steering force when lane departure is detected. It is not a collision-avoidance system or a substitute for safe and attentive driving. Effectiveness is dependent on many factors including road, weather and vehicle conditions. See *Owner's Manual* for additional limitations and details. **36.** Automatic High Beams operate at speeds above 25 mph. Factors such as a dirty windshield, weather, lighting and terrain limit effectiveness, requiring the driver to manually operate the high beams. See *Owner's Manual* for additional limitations and details. **37.** Do not rely exclusively on Road Sign Assist (RSA). RSA is a driver support system that utilizes the vehicle's forward-facing camera and navigation system to recognize certain road signs and provide information to the driver via the multi-information display and/or Head-Up Display. Effectiveness is dependent on road, weather, vehicle and sign conditions. Use common sense when using RSA and do not drive distracted. See *Owner's Manual* for additional limitations and details. **38.** Full-Speed Range Dynamic Radar Cruise Control is designed to assist the driver and is not a substitute for safe and attentive driving practices. System effectiveness is dependent on road, weather and traffic conditions. See *Owner's Manual* for additional limitations and details. **39.** Dynamic Radar Cruise Control is designed to assist the driver and is not a substitute for safe and attentive driving practices. System effectiveness is dependent on many factors including road, weather and traffic conditions. See *Owner's Manual* for additional limitations and details. **40.** The Smart Key System may interfere with some pacemakers or cardiac defibrillators. If you have one of these medical devices, please talk to your doctor to see if you should deactivate this system. **41.** The Adaptive Front-Lighting System helps improve vision at night. Situations such as a dirty windshield, rapidly changing light conditions or hilly terrain will limit effectiveness, requiring the driver to manually turn off the system. See *Owner's Manual* for details. **42.** Hill Start Assist Control is designed to help minimize backward rolling on steep ascents. It is not a substitute for safe driving judgment and practices. Factors including speed, grade, surface conditions and driver input can all affect whether HAC will be effective in preventing a loss of control. See *Owner's Manual* for additional limitations and details. **43.** The engine immobilizer is a state-of-the-art anti-theft system. When you insert your key into the ignition switch or bring a Smart Key fob into the vehicle, the key transmits an electronic code to the vehicle. The engine will only start if the code in the transponder chip inside the key/fob matches the code in the vehicle's immobilizer. Because the transponder chip is embedded in the key/fob, it can be costly to replace. If you lose a key or fob, your Toyota dealer can help. Alternatively, you can find a qualified independent locksmith to perform high-security key services by consulting your local Yellow Pages or by contacting www.aloa.org. **44.** Cargo and load capacity limited by weight and distribution. **45.** 2019 EPA-estimated mileage. Actual mileage will vary. **46.** Extra-cost color. **47.** Amazon, Alexa, and all related logos and marks are trademarks of Amazon.com, Inc. or its affiliates. Not all Amazon Alexa skills are available for in-vehicle use. **48.** Remote start/stop not available on manual transmission-equipped vehicles. **49.** Not all smartwatches are compatible with Remote Connect: Samsung Gear, Fitbit, Garmin are not compatible. **50.** Not available on manual transmission. **51.** 2019 EPA-estimated 32 city/42 highway/36 combined mpg for Corolla Hatchback SE with automatic transmission. Actual mileage will vary. **52.** 2019 EPA-estimated 30 city/38 highway/33 combined mpg for Corolla Hatchback XSE with automatic transmission. Actual mileage will vary. **53.** This floor mat was designed specifically for use in your model and model year vehicle and SHOULD NOT be used in any other vehicle. To avoid potential interference with pedal operation, each mat must be secured with its fasteners. Do not install a floor mat on top of an existing floor mat. **54.** The Toyota Genuine Accessory Warranty will only apply when the installation is performed by a trained Toyota-approved installer. Please see dealer for details. **55.** The universal tablet holder is intended for passengers only. Drivers should always be sure to obey traffic regulations and maintain awareness of the road and traffic conditions at all times. Use of aftermarket accessories may pose an increased risk of injury to occupants in the event of an accident. Tablet sold separately. **56.** ToyotaCare plan covers normal factory scheduled service for 2 years or 25K miles, whichever comes first. See Toyota dealer for details and exclusions. Valid only in the continental U.S. and Alaska. **57.** Apple and the Apple logo are trademarks of Apple Inc., registered in the U.S. and other countries. App Store is a service mark of Apple Inc. **58.** The Safety Connect® trial period is at no extra cost and begins on the original date of purchase or lease of a new vehicle. After the trial period expires, enrollment in paid subscription is required to access the service. Terms and conditions apply. **59.** The Wi-Fi Connect trial period is at no extra cost and begins on the date of activation. After the trial period expires, enrollment in a paid subscription is required to access the service. Terms and conditions apply. **60.** The Service Connect trial period is at no extra cost and begins on the original date of purchase or lease of a new vehicle. After the respective trial period expires, enrollment in paid subscription is required to access the service. Terms and conditions apply. **61.** The Remote Connect trial period is at no extra cost and begins on the original date of purchase or lease of a new vehicle. After the trial period expires, enrollment in a paid subscription is required to access the service. Terms and conditions apply. **62.** The Destination Assist Connect trial period is at no extra cost and begins on the original date of purchase or lease of a new vehicle. After the trial period expires, enrollment in a paid subscription is required to access the service. Terms and conditions of subscription service agreement apply.

Toyota strives to build vehicles to match customer interest and thus they typically are built with popular options and option packages. Not all options/packages are available separately and some may not be available in all regions of the country. See toyota.com for information about options/packages commonly available in your area. If you would prefer a vehicle without any or with different options, contact your dealer to check for current availability or the possibility of placing a special order.

Some vehicles are shown with available equipment. Seatbelts should be worn at all times. For details on vehicle specifications, standard features and available equipment in your area, contact your Toyota dealer. A vehicle with particular equipment may not be available at the dealership. Ask your Toyota dealer to help locate a specifically equipped vehicle. All information presented herein is based on data available at the time of posting, is subject to change without notice and pertains specifically to mainland U.S.A. vehicles only. Prototypes shown. Actual production vehicles will vary.



For Toyota Mobility program details, go to www.toyota.com/mobility or call the Toyota Customer Assistance Center at 1-800-331-4331