

2014 CHEROKEE



Jeep®

{ FREE YOURSELF }

BEST-IN-CLASS<sup>1\*</sup> 4x4 CAPABILITY<sup>†</sup>

CLASS-EXCLUSIVE<sup>2</sup> 9-SPEED AUTOMATIC TRANSMISSION

NEW JEEP<sup>®</sup> SELEC-TERRAIN<sup>®</sup> SYSTEM<sup>†</sup>

TWO NEW, IMPRESSIVELY EFFICIENT ENGINES

BEST-IN-CLASS<sup>2</sup> TOWING CAPABILITY<sup>†</sup>

NEW COMMANDVIEW<sup>®</sup> DUAL-PANE SUNROOF<sup>†</sup>

AWARD-WINNING UCONNECT<sup>®</sup> TECHNOLOGY WITH VOICE COMMAND

WORLD-CLASS INTERIOR CRAFTSMANSHIP

THREE NEW 4x4 SYSTEMS<sup>†</sup>

NEW JEEP CARGO MANAGEMENT SYSTEM

NEW 7-INCH MULTI-VIEW DISPLAY<sup>†</sup>

70+ SAFETY & SECURITY SYSTEMS, STANDARD & AVAILABLE

BEST-IN-CLASS<sup>2</sup> 10 STANDARD AIR BAGS<sup>3</sup>

NEW SELEC-SPEED<sup>®</sup> CONTROL<sup>†</sup>

\*A note about this brochure: all disclaimers and disclosures can be found in catalog's center. <sup>†</sup>Available features.

Meet every road and trail with a strength of character that  
delivers ultimate all-weather confidence.

Perfectly sized to perform with sophisticated, efficient skill, the all-new Jeep® Cherokee  
goes far and wide with its legendary, available Jeep brand 4x4 DNA.

Engineered to excel on all terrain, Cherokee invites the adventurer in you to get out  
and experience the best of all worlds.



CHEROKEE TRAILHAWK SHOWN IN BILLET SILVER METALLIC.

## BEST-IN-CLASS<sup>1</sup> 4x4 CAPABILITY

The all-new 2014 Jeep<sup>®</sup> Cherokee takes legendary available 4x4 capability to the next level for those who desire the distinct advantages of an all-weather, all-terrain warrior.

Jeep 4x4 vehicles stand at the pinnacle of off-road prowess the world over, arriving at destinations others only dream of reaching.

# 4x4

Here, efficiency and power make a strong connection. The all-new Cherokee stands tall as the first mid-size 4x4 SUV to come equipped with an available rear-axle disconnect? Go from four-wheel drive to two-wheel drive, and back again, seamless and automatic. And always efficient. Choose from three new and powerful Jeep<sup>®</sup> engineered 4x4 systems.

### JEEP<sup>®</sup> ACTIVE DRIVE I.

A fully automatic single power transfer unit (PTU) delivers seamless operation in and out of 4WD at any speed. Yaw correction is automatic as well, helping to keep Cherokee stable at all times.

### JEEP ACTIVE DRIVE II.

A two-speed PTU offers torque management and 4-Low mode. This locks the front and rear driveshafts to deliver additional power at low speeds or for towing your toys. A driveline neutral switch enables you to hitch Cherokee to your RV and take it along for fun. Additionally, off-road adventurers will benefit from a one-inch increase in ride height and an incredible crawl ratio of 56:1 when paired with the 2.4L TigerShark MultiAir<sup>®</sup>2 I-4 engine and a ratio of 48:1 when paired with the available 3.2L Pentastar<sup>®</sup> V6 engine. This allows Cherokee to perform amazing feats of off-road prowess, climbing steep hills and crawling over boulders with ease.



### JEEP ACTIVE DRIVE LOCK.

Includes everything in Jeep Active Drive II, plus a locking rear differential, providing even more capability and strength for severe off-road conditions. Standard on all Jeep Cherokee Trailhawk models.





**TRAILHAWK TRAIL RATED\* CAPABILITY**

APPROACH ANGLE*	29.9°
BREAKOVER ANGLE	22.9°
DEPARTURE ANGLE	32.2°
WATER FORDING DEPTH <sup>4</sup>	20" @ 5 mph
GROUND CLEARANCE	8.7"

\*Removable front lower fascia detached.



**A CURRENCY OF CAPABILITY.**

Introducing a new species designed to rise above. Jeep, Cherokee Trailhawk arrives with best-in-class<sup>1</sup> 4x4 capability, thanks to the standard Jeep Active Drive Lock 4x4 system with a locking rear differential. Trailhawk also includes protective skid plates and signature Red tow hooks — two in the front and one in the rear.

Trailhawk is equipped with Selec-Terrain,<sup>®</sup> the Jeep brand's renowned traction management system that allows the driver to choose from five customized traction modes: Auto, Snow, Sport, Sand/Mud and Rock. Selec-Speed<sup>®</sup> helps safely manage travel on steep inclines or declines. A driveline neutral switch for flat towing is also included.

Every Jeep vehicle bearing a Trail Rated<sup>®</sup> badge is designed and built to Go Anywhere, Do Anything<sup>®</sup> and perform with exceptional 4WD capability. It must successfully pass five performance test categories:

**TRACTION.**

Trail Rated traction helps maintain controlled forward motion on snowy back roads and icy bridges, climb steep sand dunes and master muddy two-tracks.

**ARTICULATION.**

When one or more wheels are elevated, the Jeep 4x4 system helps the other wheel(s) maintain ground contact longer to help you move steadily ahead. Suspensions enhance off-road performance by maximizing flexibility, axle articulation and wheel travel.

**MANEUVERABILITY.**

Precision steering and optimized wheelbase allow for expert navigation at all times.

**GROUND CLEARANCE.**

Clear logs, rocks and uneven ground thanks to optimal approach, departure and breakover angles.

**WATER FORDING.<sup>4</sup>**

Additional electrical and body seals, plus a high air-intake location, let you traverse bodies of water up to 20-inches deep.



{ YES, IT CAN }

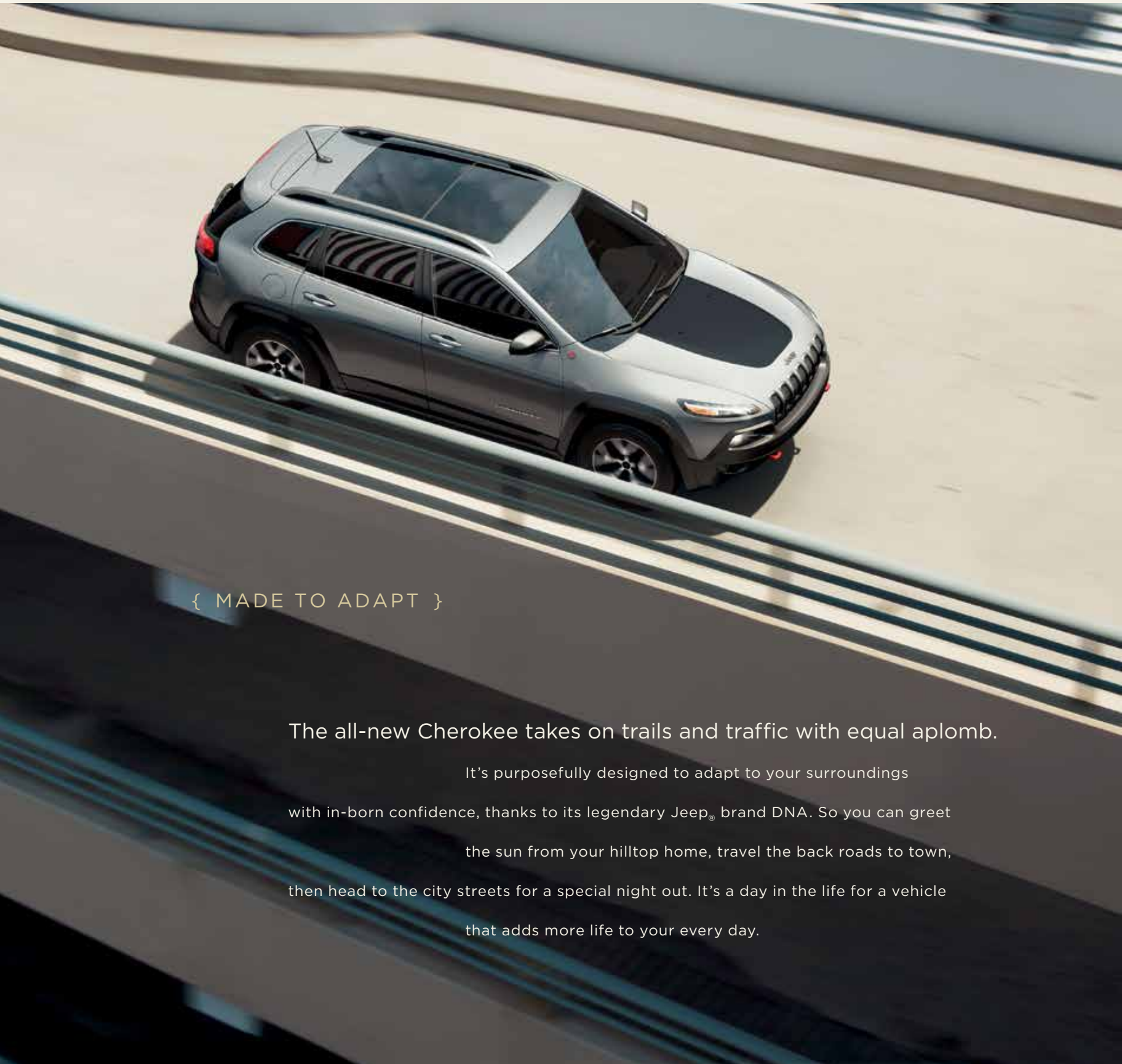


### KEYLESS ENTER 'N GO

Eliminate time spent fumbling with door keys. Simply press a button on the key fob to unlock the driver door. Upon entry, you can quickly and easily start the vehicle with a press of the engine Start-Stop button — a favorite feature for busy people on the run.



CHEROKEE TRAILHAWK SHOWN IN BILLET SILVER METALLIC.



{ MADE TO ADAPT }

The all-new Cherokee takes on trails and traffic with equal aplomb.

It's purposefully designed to adapt to your surroundings with in-born confidence, thanks to its legendary Jeep® brand DNA. So you can greet the sun from your hilltop home, travel the back roads to town, then head to the city streets for a special night out. It's a day in the life for a vehicle that adds more life to your every day.

CHEROKEE TRAILHAWK SHOWN IN BILLET SILVER METALLIC.

#### 9-SPEED TRANSMISSION

It's all-new and Jeep® engineered to respond quickly upon acceleration, with smooth power delivery and transitions between all nine gear ratios. A unique set of four overdrive ratios help gain efficiencies while reducing overall noise, vibration and harshness (NVH) levels. Electronic Range Select supports a manual shifting capability with the AutoStick function that includes over 40 individual shift maps for specific conditions to help maximize efficiency, performance and drivability. Thus, performance is attuned to nearly any driving demand, both on- and off-road, and gear changes are nearly imperceptible on every terrain. Standard.

It's a shift in forward thinking. It's the bridge uniting luxuriously smooth travel with a welcome, efficient performance.

Cross over to the next generation of mid-size SUV travel with the all-new Jeep® Cherokee, bearing a new, **CLASS-EXCLUSIVE<sup>2</sup> 9-SPEED AUTOMATIC TRANSMISSION.**

This finely wrought standard feature helps prove that Cherokee was born to dominate its class with a trifecta of strong performance marks in luxury, efficiency and strength.

9

Every 4x4 Cherokee is equipped with a Jeep® Selec-Terrain® system, giving you the power to tackle Mother Nature's toughest conditions.

You'll have up to five settings that deliver ultimate driving stability by coordinating 12 vehicle systems, including throttle control, transmission shifting, transfer case,

traction control and Electronic Stability Control<sup>5</sup> (ESC). Choose from up to five sure-footed modes:

Auto, Snow, Sport, Sand/Mud and available Rock.

#### COLD WEATHER GROUP

When the temps take a dive, you'll stay safe and warm with this bundle of nicely packaged features. The remote start lets you preheat (or precool) the cabin. The windshield wiper de-icer helps maintain a clear view of the road ahead. The heated leather-wrapped steering wheel and heated front seats work to take the chill away, and all-weather floor mats offer protection from slushy footwear. Heated outside mirrors are also included.



CHEROKEE TRAILHAWK SHOWN IN BRIGHT WHITE.

# SELEC-TERRAIN®

## TRACTION MANAGEMENT



#### SPORT

Feeling like having a little more fun on winding country roads or tracks? Select this mode and you're automatically tuned to handle a more aggressive driving style.

#### SAND/MUD

Maximize low-speed traction by allowing additional wheel slip via specifically tuned chassis controls, differentials and transmission ratios that are geared to successfully tackle sand and mud.

Explore the wonders of the world as you see fit. Choose from Auto, Snow, Sport, Sand/Mud and available Rock. The authentic 4x4 capability of Jeep® Cherokee takes you to places others only dream of reaching.

#### SNOW

Adjusts for ultimate performance over snow- and ice-covered roads by maximizing vehicle stability and minimizing oversteer. Major systems auto-engaged and managed in this mode include antilock brakes and traction control.

#### ROCK

(Available) This mode delivers Trail Rated® 4WD Low capability thanks to its rear-differential locking element. This permits serious off-road maneuvering, allowing you to crawl over rugged terrain at appropriately safe speeds.

#### AUTO

In this mode, Selec-Terrain does all the work for you, automatically adjusting vehicle dynamics to best suit the road ahead. To help ensure optimal efficiency, the rear driveline automatically disconnects as well.



## STRENGTH OF PURPOSE

**SELEC-SPEED®** Helps to tackle off-road climbs and hill descents with aplomb. Press the Control button to engage an array of integrated systems, including Electronic Stability Control<sup>5</sup> (ESC), which helps your vehicle maintain a target speed of 1 to 5 mph while driving over obstacles and on uphill, level and downhill surfaces. This lets you focus on steering while navigating challenging situations. Standard on Jeep® Cherokee Trailhawk.



**9-SPEED TRANSMISSION.** It's all about driving comfort, refinement and efficiency. Appropriate shift modes for the 9-speed transmission are determined by intelligent software that monitors engine torque and kick-down, acceleration and road/grade changes.

**BEST-IN-CLASS<sup>2</sup> TOWING.** Take your best toys with you with best-in-class<sup>2</sup> towing capabilities. When your Cherokee is equipped with the new, available 3.2L Pentastar® V6 engine and the available Trailer Tow Group, you gain refined towing power with the engine's brawny 271 hp and 239 lb-ft of torque, plus an estimated 29 hwy mpg.\*



### SMOOTH TRAVELS

This all-new, class-exclusive<sup>2</sup> 9-speed transmission automatically creates a ride that's at once both powerful and luxurious. Gear shifts are all but imperceptible, helping to create a ride that's exceptionally smooth for a mid-size SUV.



### TOWING CAPABILITY

Maximum Trailer Weight Rating when equipped with available aftermarket Class II hitch

2.4L I-4	2,000 lb
3.2L V6	2,000 lb
3.2L V6 with Trailer Tow Group	4,500 lb

\*Based on Chrysler Group LLC testing. EPA estimates not yet available.



**AUTHENTIC JEEP. ACCESSORIES** Whether you're climbing rugged hills or cruising smooth highways, raise the profile and capability of your Cherokee with Authentic Jeep. Accessories from Mopar. You can count on these quality-engineered parts and accessories to keep your Cherokee as authentic as the day you bought it. For a true, seamless fit and finish, exact color matches and high-quality material, it's smart to choose Mopar for the life of your ride. In addition, your ownership experience is supported mile after mile with our expert technicians, Mopar Vehicle Protection™ plans, Express Lane Service for a quick oil change and the online Mopar Owner Connect™ Web site (register at [owners.jeep.com](http://owners.jeep.com)).

New and exciting Mopar accessories for Jeep Cherokee are always in development, including cargo management systems, towing accessories, convenience and protection products, and more. Ask your dealer for details on what's on the horizon.



Properly secure all cargo.



## NEW EFFICIENT ENGINES

**2.4L TIGERSHARK MULTI-AIR® 2 I-4 ENGINE.** From its fully isolated aluminum head cover with an integrated oil separation system to its high-pressure, die-cast aluminum block, the new TigerShark engine was engineered to deliver a quiet and refined ride. Plus, for those with dreams of heading for aggressive off-road destinations, it takes its 184 hp and 171 lb-ft of torque and crushes it down to a boulder-pounding crawl ratio of 56:1 when paired with the available Jeep® Active Drive Lock 4WD system on the Trail Rated® Cherokee Trailhawk.

2.4L TigerShark MultiAir® 2 I-4 engine delivers an impressive 31 highway mpg,\* arriving as standard issue in the all-new 2014 Cherokee.

**3.2L PENTASTAR® V6 ENGINE.** This new and available workhorse is designed to deliver the kind of power needed to tackle off-road elements and support all-weather travel on any terrain. Demanding drivers will appreciate its 271 hp and 239 lb-ft of torque — enough to reach a best-in-class<sup>2</sup> towing power of up to 4,500 lb when properly equipped. This engine's pedigree includes being named one of *Ward's* 10 Best Engines three years running.



Acclaimed for its unique and efficient valve-lift system, the TigerShark MultiAir® 2 I-4 engine incorporates a column of oil flow that helps deliver precise control of intake valve events.



Quiet, smooth stealth is the hallmark of the Pentastar® V6 engine, thanks to its integrated exhaust manifold, high-compression-ratio pistons and variable-displacement oil pump.

\*Based on Chrysler Group LLC testing. Estimated 4x2 22 mpg city/31 mpg hwy. Actual mileage may vary. For comparison purposes only.



CHEROKEE LIMITED SHOWN IN BILLET SILVER METALLIC.

- 1| The available 7-inch Multi-View Display provides performance data and dozens of other stats.
- 2| Heated side mirrors are a welcome and available safety feature.
- 3| Available skid plates (standard on Trailhawk models) provide underbelly protection for your off-road adventures.
- 4| Pride of Cherokee ownership shines on Trailhawk's 17-inch polished/painted off-road aluminum wheels.

**INDEPENDENCE FORGES QUIET STRENGTH.** New front and rear independent suspension systems are designed with high-strength lightweight steel and aluminum, helping to deliver a ride quietly free of unwanted noise, vibration and harshness (NVH). Premium nimble travel is achieved with the help of front MacPherson struts, renowned for their strength and stability. The overall design uses multiple load support pathways, additionally increasing Cherokee's passive safety performance. Cherokee's new front suspension cradle is fine-tuned to help improve efficiency, thanks to high-pressure die-cast aluminum construction. The system's stiff suspension cradle helps inhibit road noise in the cabin, contributing to Cherokee's exceptionally quiet interior.

**TESTED AND TUNED TO PERFORM.** An extraordinary ride requires exacting calibration on many fronts. Cherokee engineers accrued thousands of miles gauging on- and off-road ride and handling over rural roads, thoroughfares and highways and even autobahns and testing facilities overseas. This helped deliver a near-perfect attenuation, fit and finish. A solid, stable and premium ride with precise steering and handling is the result, with a nimble available 36.2-ft turn circle.

A BEAUTIFUL, STRONG SUPPORT SYSTEM



## ADVANCED SAFETY & SECURITY

There's strength in numbers, and Cherokee is built with plenty of muscle, thanks to over 70 standard and available safety and security features, including:

**PARALLEL AND PERPENDICULAR PARK ASSIST<sup>6</sup>** This active guidance system controls steering automatically using ultrasonic sensors that help you ease into parking spots. Includes ParkSense<sup>®</sup> front and rear park assist sensors. Available.

**ADAPTIVE CRUISE CONTROL WITH STOP & GO<sup>7</sup>** Take the guesswork out of keeping a safe distance from the car ahead while cruising on the highway. The system automatically adjusts cruising speed to maintain a preset distance between you and the vehicle in front of you and can bring Cherokee to a complete stop without driver intervention to help avoid a collision. Available.



Slip into parking spaces with ease. Available Parallel and Perpendicular Park Assist<sup>6</sup> takes control of steering angles, while the driver remains safely in control of the brake and accelerator.

### FORWARD COLLISION WARNING WITH CRASH MITIGATION<sup>8</sup>

Radar sensors detect when Cherokee may be approaching another vehicle too rapidly and send an audible and visual alert to the driver along with providing 1.5 seconds of brake assistance if the driver does not react in time. Available.

**LANESENSE<sup>™</sup> LANE DEPARTURE WARNING<sup>9</sup> (LDW)**. The vehicle lane position is monitored by cameras and, should the driver drift outside of lane boundaries or if the driver's hands are off the wheel the system provides a visual and audible warning. Available.

### BLIND SPOT MONITORING<sup>10</sup> AND REAR CROSS-PATH DETECTION<sup>5</sup>

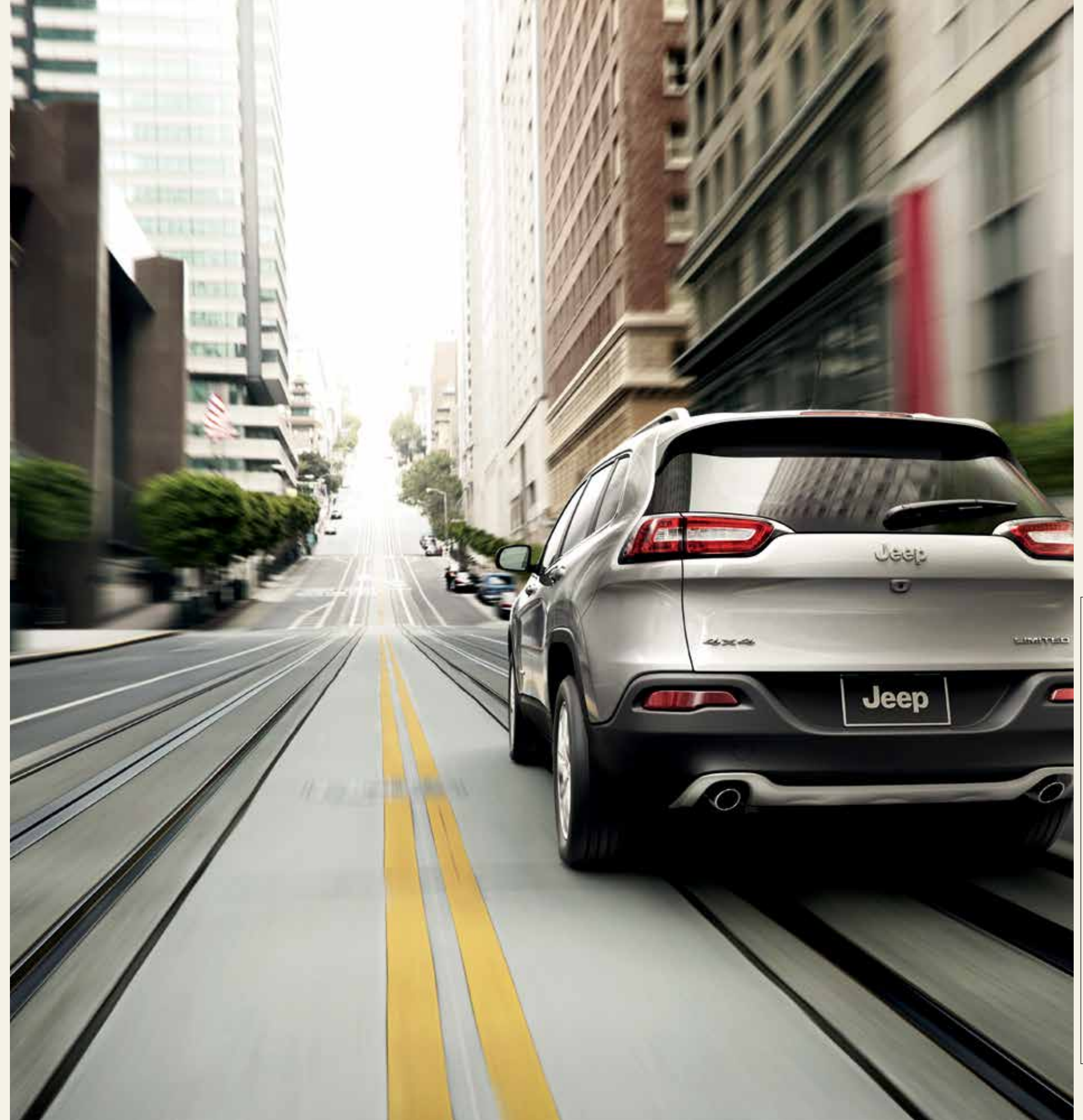
These sentry systems constantly monitor the space between you and other drivers. When a side or rear blind spot is encroached, you're notified via illuminated icons on sideview mirrors or an audible chime. Available.

### UCONNECT<sup>®</sup> ACCESS<sup>11</sup> WITH 9-1-1 AND ROADSIDE ASSISTANCE.

A fast and direct connection to help is right at hand with Uconnect Access,<sup>11</sup> the next benchmark in emergency vehicle assistance. Two buttons conveniently located on the rearview mirror offer an instant lifeline. Press "9-1-1" for a connection to a 9-1-1 call center, or press "ASSIST" to quickly summon roadside help. Available.



Configure the warning zone points in the available LaneSense Lane Departure Warning<sup>9</sup> System to suit your driving style through personalized settings in your vehicle's radio.



## POWERTRAINS

	2.4L I-4	3.2L V6
Engine	2.4L I-4	3.2L V6
Displacement (cu in)	144	197.7
Horsepower (SAE net-estimated)	184 @ 6,400	271 @ 6,500
Torque (SAE net lb-ft @ rpm)	171 @ 4,600	239 @ 4,400
Axle Ratio (standard)	3.73	3.25
Fuel System	Sequential, multipoint, electronic, returnless	Sequential, multipoint, electronic, returnless

## BODY/SUSPENSION

**Body Design**  
UniFrame construction: all-steel body sheet metal and frame, structural members welded and bonded into a single unit

**Suspension**  
Front: MacPherson strut, long travel coil springs, one-piece aluminum subframe, aluminum lower control arms and stabilizer bar

Rear: four-link rear suspension with trailing arm, aluminum lateral links, isolated high-strength steel rear cradle, coil springs and stabilizer bar

**Steering**  
Power rack and pinion electric  
Overall ratio (:1): 4x2 and 4x4: 15.15, 4x4 Lock: 15.36  
Steering turns (lock-to-lock): 4x2 and 4x4: 2.56, 4x4 Lock: 2.67  
Turning diameter (curb-to-curb): 4x2: 37.6 (11.5), 4x4: 37.7 (11.5), 4x4 Lifted: 38.0 (11.6), Off-Road: 38.1 (11.6)

## BRAKE SYSTEM

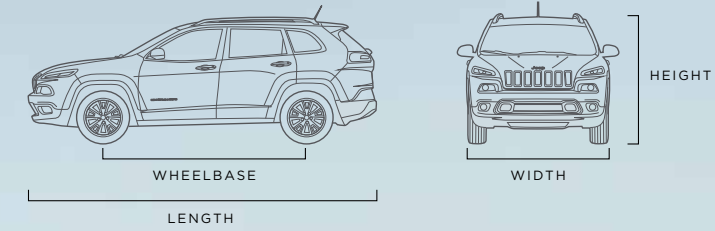
**Size and Type:**  
Front: 13 x 1.1 vented rotor with 2.36 single-piston floating caliper  
13 x 1.1 vented rotor with 1.89 twin-piston floating caliper (available)  
Rear: 10.95 x 0.47 solid rotor with 1.5 single-piston floating caliper  
12.6 x 0.47 solid rotor with 1.69 single-piston floating caliper (available)

**Electronic Stability Control<sup>5</sup> (ESC)**  
Four-channel, four-wheel antilock with active wheel-speed, vehicle-speed, steering wheel-angle, yaw-rate and lateral-acceleration sensors, vehicle stability management with two-stage activation switch, All-Speed Traction Control, Brake Assist, Electronic Roll Mitigation (ERM) and Electronic Brake-Force Distribution (EBD)

## CAPACITIES/WEIGHTS

(lb unless otherwise specified)

Fuel Tank (gal)	15.9	
Base Curb Weight	3.2L 4x2	3,775
	3.2L 4x4	4,044
	3.2L 4x4 Lock	4,106
Payload Capacity (with all occupants and cargo)	1,000	



## EXTERIOR

(inches unless otherwise specified)

	Jeep, Active Drive I 4x4	Jeep Active Drive II 4x4	Jeep Active Drive Lock 4x4	
Wheelbase	106.26	106.3	N/A	107.0
Overall Length	182	182	182	182
Overall Width	73.2	73.2	73.2	74.9
Track, Front	62.2	62.2	62.7	63.5
Track, Rear	61.9	61.9	62.7	63.5
Overall Height (with roof rack)	65.7	66.2	67.3	67.8
Ground Clearance	8.7	8.7	8.7	8.7
Approach Angle (with air dam)	16.7°	18.9°	21.0°	29.9°
Breakover Angle	17.7°	19.5°	21.7°	22.9°
Departure Angle	24.6°	25.2°	27.3°	32.2°
Water Fording <sup>4</sup>	N/A	19	19	20

## INTERIOR

(inches unless specified, front/rear)

Headroom (without sunroof)	39.4/38.5
Legroom	41.1/40.3
Shoulder Room	57.6/55.1
Hip Room	53.8/49.9
Second-row Recliner Range (in degrees)	8 to 78 manual, 8 to 55.25 powered
Cargo Volume (in cubic feet)	49.47
Rear Seats Up	24.6
Rear Seats Folded	54.9



# CHEROKEE

## SPECIFICATIONS AND OPTIONS

	SPORT	LATITUDE	TRAILHAWK	LIMITED
<b>ENGINE</b>				
2.4L I-4 TigerShark MultiAir®2 — 9-speed transmission	•	•	•	•
3.2L V6 VVT Pentastar® — 9-speed transmission		O	O	O
<b>CAPABILITY</b>				
Exhaust system — Single rear exhaust with bright tip	•	•	•	•
— Dual rear exhaust with bright tips (packaged with 3.2L engine)		O	O	O
Four-Wheel-Drive (4WD) System — Jeep Active Drive I, single-speed 4WD	O	O	O	O
— Jeep Active Drive II, 2-speed 4WD		O	O	O
— Jeep Active Drive Lock, 2-speed 4WD with rear locker			•	•
Fuel door — Power-locking fuel filler door	•	•	•	•
Selec-Speed® Control			•	•
Selec-Terrain® — Floor dial with up to five traction control settings (4x4 models only)	•	•	•	•
Suspension — Normal-duty	•	•	•	•
— Off-road (packaged with 4WD 9-speed transmission, 2-speed power takeoff)		P	•	P
<b>EXTERIOR</b>				
Fascias — Accent/body-color	•	•	•	•
— Rear fascia skid plate appliqué			•	•
Grille — Chrome surround	•	•	•	•
— Accent-color surround			•	•
— Active grille shutters (packaged with 2.4L engine)	P	P	P	P
Hood decal (Matte Black)			O	O
Liftgate — Power (packaged with Comfort/Convenience Group on Latitude/Trailhawk, packaged with Luxury Group on Limited)		P	P	P
Lighting exterior — Fog lamps	•	•	•	•
— Automatic headlamps (packaged with Comfort/Convenience Group)		P	P	•
— Bi-function halogen projector headlamps	•	•	•	•
— HID headlamps (packaged with Luxury Group)			P	P
— Auto High-Beam Headlamp Control system (packaged with Technology Group)		P	P	P
— LED daytime running headlamps	•	•	•	•
— Headlamp off-time delay	•	•	•	•
— Black headlamp bezels	•	•	•	•
Mirrors — Power, manual foldaway with heating element	•	•	•	•
— Power, manual foldaway with heating element and memory, supplemental turn signals, courtesy lamps (packaged with Technology Group)		P	P	•
— Black	•	•	•	•
— Body-color			•	•
— Accent-color			•	•
Roof Rails — Bright	•	•	•	•
— Accent-color			•	•
Sunroof — CommandView® Dual-Pane Panoramic Sunroof: Full, power front, fixed rear (must have Comfort/Convenience Group on Latitude)		O	O	O

	SPORT	LATITUDE	TRAILHAWK	LIMITED
<b>EXTERIOR</b> continued				
Wheels — 17-inch full-face steel	•	•	•	•
— 17-inch painted aluminum	O	•	•	•
— 18-inch polished aluminum		O	•	•
— 17-inch Trailhawk polished/painted off-road aluminum (packaged with OWL all-terrain tires)			•	•
Wheel flares — Off-road			•	•
Wiper system — Front, variable/intermittent	•	•	•	•
— Front, rain-sensing automatic feature (packaged with Technology Group)		P	P	P
— Windshield wiper de-icer (packaged with Cold Weather Group)	P	P	P	•
— Rear, with washer	•	•	•	•
<b>INTERIOR</b>				
3.5-inch high-resolution Thin-Film Transistor (TFT) cluster	•	•	•	•
7-inch Multi-View Display			•	•
Air conditioning	•	•	•	•
— Dual-Zone Automatic Temperature Control, includes humidity sensor and premium air filter (packaged with Comfort/Convenience Group)		P	P	•
Air filtration system (packaged with Comfort/Convenience Group)		P	P	•
Cargo area — Includes 8 cargo tie-down loops	•	•	•	•
— Cargo net (packaged with Comfort/Convenience Group)		P	•	•
Console — Overhead front with sunglasses storage bin	•	•	•	•
— Full-length front floor console	•	•	•	•
— Instrument panel top storage bin	•	•	•	•
Cup holders — Illuminated	•	•	•	•
Memory system — Radio station presets, driver seat, mirrors and HVAC (packaged with Luxury Group)				P
Mirror — Rearview, with microphone	•	•	•	•
— Rearview, auto-dimming with microphone (packaged with Comfort/Convenience Group)		P	P	•
Seats — Cloth with Portland cloth seat insert with Brook II cloth bolsters (available in Black and Black/Iceland; Brown available on Latitude only)	•	•	•	•
— Fabric/leather-trimmed seats with Rivet seat insert and Nappa seat bolsters; available in Black or Brown			•	•
— Leather-trimmed seating with Nappa leather seat inserts and bolsters and Red accent stitching, available in Black, Black/Iceland Gray or Indigo Blue/Brown			•	•
— Premium ventilated leather-trimmed seating with Nappa leather and Axis II perforation and Nappa bolstering, available in Black, Black/Iceland Gray or Indigo Blue/Brown (packaged with Luxury Group)				P
Seats, Front — Manual 6-way driver seat	•	•	•	•
— Power 8-way driver seat and power 4-way driver lumbar adjust (packaged with Comfort/Convenience Group on Latitude and Trailhawk, packaged with Leather Interior Group on Trailhawk)		P	P	•
— Heated front seats (packaged with Cold Weather Group on all trims, packaged with Leather Interior Group on Trailhawk)	P	P	P	•
— Front-passenger forward fold-flat seat with under-cushion storage			•	•
Seats, 2nd row — 60/40 folding seat	•	•	•	•
Steering wheel: Leather-wrapped, with speed control and Adaptive Cruise Control <sup>7</sup> (packaged with Cold Weather Group)	P	•	•	•

	SPORT	LATITUDE	TRAILHAWK	LIMITED
<b>INTERIOR</b> continued				
— Heated (packaged with Cold Weather Group on all trims, packaged with Leather Interior Group on Trailhawk)	P	P	P	•
— Tilt/telescoping steering column	•	•	•	•
Wireless charging pad (in upper tray of floor console storage)	O	O	O	O
<b>SAFETY &amp; SECURITY</b>				
Adaptive Cruise Control <sup>7</sup> (packaged with Technology Group)	P	P	P	P
Air bags <sup>3</sup> (10 total) — Advanced multistage, driver and front-passenger, supplemental front-seat side, supplemental side-curtain front/rear, supplemental rear-seat side and driver and passenger inflatable knee-bolster	•	•	•	•
Blind Spot Monitoring <sup>10</sup> — Notifies driver of vehicles traveling in the blind spot using illuminated icons in the exterior rearview mirrors. If the turn signal is engaged when a vehicle is in the blind spot, an audible chime will sound (packaged with Technology Group).		P	P	P
Electronic Stability Control <sup>5</sup> (ESC) — Includes vehicle stability management system, Electronic Roll Mitigation, All-Speed Traction Control, Brake Assist and four-channel antilock brake system	•	•	•	•
Forward Collision Warning <sup>8</sup> with crash mitigation (packaged with Technology Group)		P	P	P
Hill Start Assist — Prevents vehicle from rolling back for 2 seconds when starting on an incline	•	•	•	•
Keyless entry with panic button	•	•	•	•
— Remote Proximity Keyless Entry (packaged with Comfort/Convenience Group)		P	P	•
— Passive Entry/Keyless Go (Push-button Start; packaged with Comfort/Convenience Group)		P	P	•
LaneSense™ Lane Departure Warning <sup>9</sup> (LDW) (packaged with Technology Group)		P	P	P
ParkView® Rear Back-Up Camera <sup>6</sup> and Park Assist, with dynamic grid lines (packaged with Safety Group on Sport, Latitude and Trailhawk, packaged with Comfort/Convenience Group on Latitude and Trailhawk, packaged with Technology Group on Latitude and Trailhawk)	O/P	P	P	•
Power outlet — 12V aux	•	•	•	•
— 12V in cargo area	•	•	•	•
— 12V aux in instrument panel	•	•	•	•
Rear Cross-Path Detection <sup>6</sup> — In parking lot situations, the system will notify the driver if a vehicle is traveling toward the path of its vehicle. An audible chime will sound and an icon will illuminate in the exterior mirror (packaged with Technology Group).		P	P	P
Remote Start System (packaged with Cold Weather Group on all trims, packaged with Comfort/Convenience Group on Latitude/Trailhawk)	P	P	P	•
Security alarm (Packaged with Comfort/Convenience Group)	O	P	P	•
Trailer Sway Control — Works in tandem with ESC <sup>5</sup> to help improve handling in adverse towing conditions caused by crosswinds and traffic	•	•	•	•
Universal garage door opener — Programmable radio frequency codes for garage door, security gate and security lighting, mounted in overhead console (packaged with Comfort/Convenience Group)		P	P	•

	SPORT	LATITUDE	TRAILHAWK	LIMITED
<b>UCONNECT®</b>				
Speakers — 6	•	•	•	•
— Alpine® Premium Audio system with 9 speakers and subwoofer, 506-watt amp		O	O	O
SiriusXM® Satellite Radio <sup>12</sup> (packaged with Comfort/Convenience Group)	O	P	•	•
Uconnect 5.0	•	•	•	•
Uconnect 8.4A		O	•	•
Uconnect 8.4AN			O	O
<b>GROUPS AND OPTIONS</b>				
Cold Weather Group — Includes windshield wiper de-icer, remote start, power-heated mirrors, all-season floor mats, heated steering wheel, heated front seats. On Trailhawk, also includes Jeep® Rack Off-Road Accessory Kit. On Sport, also includes air conditioning, steering wheel-mounted audio controls, leather-wrapped steering wheel.	O	O	O	O
Comfort/Convenience Group — Includes cargo net (not on Trailhawk), security alarm, remote start, power liftgate, remote proximity keyless entry, passive entry, rearview auto dimming mirror, air conditioning with Dual-Zone Automatic Temperature Control, universal garage door opener, tonneau cover, power 8-way driver seat, automatic headlamps, SiriusXM Satellite Radio, <sup>12</sup> ParkView Rear Back-Up Camera <sup>6</sup>		O	O	O
Leather Interior Group — Includes leather-trimmed seating, heated steering wheel, power 8-way driver seat and heated front seats.			O	O
Luxury Group — Includes ventilated front seats, premium leather-trimmed seating, power liftgate, memory for radio, driver seat and mirrors, HID headlamps.				O
Off-Road Group — Includes Selec-Speed <sup>2</sup> , locker rear axle, heavy-duty engine cooling (3.2L only), auxiliary transmission oil cooler, fuel tank skid plate, front suspension skid plate, transmission skid plate, underbody skid plate, Trail Rated® Badge.			•	•
Smoker's Group — Includes removable ash tray, cigar lighter.	O	O	O	O
Technology Group — Includes Advanced Brake Assist, Forward Collision Warning with crash mitigation <sup>8</sup> , exterior mirror courtesy lights, supplemental turn signals on exterior mirrors, LaneSense Lane Departure Warning <sup>9</sup> , rain-sensing windshield, Auto High-Beam Headlamp Control, Adaptive Cruise Control with Stop & Go <sup>7</sup> , ParkView Rear Back-Up Camera <sup>6</sup> , Blind Spot Monitoring <sup>10</sup> /Rear Cross-Path Detection <sup>6</sup> , Parallel and Perpendicular Park Assist. <sup>6</sup> Must have Comfort/Convenience Group on Latitude and Trailhawk.		O	O	O
Trailer Tow Group — Includes Jeep Rack Off-Road Accessory Kit (on Trailhawk only), heavy-duty engine cooling (3.2L only), 3.517 final drive ratio (3.2L only), auxiliary transmission oil cooler, trailer tow wiring harness, Class III receiver hitch, 7- and 4-pin wiring harness, full-size spare (not on Trailhawk).	O	O	O	O
• = Standard O = Optional P = Package				

## WHEELS





UNCOVER AN EXTENSIVE LINE OF FUN THAT'S BEEN DEVELOPED EXCLUSIVELY FOR THE JEEP® BRAND ENTHUSIAST. FROM AUTHENTIC WEARABLES TO UNIQUE GIFTS, ALL ITEMS ARE AS RUGGED AND DURABLE AS YOUR JEEP VEHICLE. THERE'S MORE TO LIFE WHEN YOU CAN EXPRESS WHAT REALLY MOVES YOU. LEARN MORE AT [JEEP.COM/GEAR](http://JEEP.COM/GEAR)



**WARRANTIES.** Jeep vehicles are covered by a 3-Year or 36,000-Mile Basic Limited Warranty (excludes normal maintenance and wear items), as well as a 5-Year or 100,000-Mile Powertrain Limited Warranty that is fully transferable. See your dealer for complete details and a copy of the 5-Year/100,000-Mile Powertrain Limited Warranty.

**MOPAR® VEHICLE PROTECTION™** The only extended protection backed by the manufacturer. Chrysler Group LLC stands behind Mopar Vehicle Protection with certified, factory-trained technicians and genuine Mopar parts and service at any dealership within the United States, Canada, Puerto Rico and Mexico. Be sure to ask for a Mopar Vehicle Protection plan at your dealership, call (800) 442-2666 or visit [moparvehicleprotection.com](http://moparvehicleprotection.com)

**MOPAR® OWNER CONNECT™** Your Jeep vehicle ownership gives you the credentials to access a secure “owners only” Web site. Once registered, you'll gain online access to your service records, extensive vehicle information and exclusive special offers. Owners are invited to register their Jeep vehicle at [moparownerconnect.com](http://moparownerconnect.com)

**AUTOMOBILITY.** Chrysler Group LLC's Automobility Program provides aftermarket reimbursement incentives on adaptive vehicle upfit equipment to help provide safe and reliable vehicle modifications, enhancing accessibility for all people. For more information, call (800) 255-9877 or visit [chryslerautomobility.com](http://chryslerautomobility.com)

**JEEP MASTERCARD®** Earn 3 points per \$1 on qualifying purchases made at Chrysler Group LLC dealerships, 2 points per \$1 on qualifying travel purchases and 1 point per \$1 on qualifying purchases everywhere else with the new Jeep MasterCard. Points may be redeemed at your local dealership for cash off your new or used vehicle, accessories, parts or service — including your next oil change. Or choose from hundreds of other rewards, including travel, cash back to your account, merchandise or gift cards<sup>13</sup> For more information or to apply, visit [jeeppcard.com](http://jeeppcard.com)



DELVE DEEPER INTO THE JEEP, BRAND WITH AN EXPANSIVE ARRAY OF SOCIAL MEDIA, SHOPPING AND OWNER RESOURCES. PLUS, DISCOVER ONE-OF-A-KIND EVENTS THAT CAN CREATE LIFELONG CONNECTIONS. EXPAND YOUR ADVENTURES IN EVERY DIRECTION BY VISITING [JEEP.COM](http://JEEP.COM)

**JEEP BADGE OF HONOR.** Introducing a new online community that invites off-roading fans to sign in, sign up, download the smartphone app and check in to legendary off-road trails across the U.S.A. earmarked by the Jeep Badge of Honor. Members can discover special trails and maps, earn Trail Points and ranks within the community, share photos and learn more about Jeep Trail Ratings. Connect with adventurous, like-minded friends at [jeep.com/badge-of-honor](http://jeep.com/badge-of-honor)

**GO MOBILE.** Take an engaging, multimedia tour of your vehicle on your mobile device. Visit the Chrysler Group LLC page in iTunes® from your smartphone or tablet to download the most up-to-date apps on all of the company's vehicles. Log on to the [jeep.com](http://jeep.com) mobile site for a comprehensive, at-a-glance review of what you need to know about your Jeep vehicle. Experience visual and interactive demonstrations of the entire lineup, gaining access to product information at your fingertips, wherever you go.

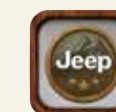
**JEEP SOCIAL ADVENTURES.** Expand your horizons to include authentic and active Jeep online communities. Post stories, share photos, watch videos and get the latest news from Jeep gearheads and engineers. Fellow Jeep enthusiasts are waiting to hear from you on Facebook ([facebook.com/Jeep](http://facebook.com/Jeep)), Twitter ([twitter.com/Jeep](http://twitter.com/Jeep)), Google+ ([plus.google.com/+Jeep](http://plus.google.com/+Jeep)), Instagram ([instagram.com/Jeep](http://instagram.com/Jeep) official), Pinterest ([pinterest.com/Jeep](http://pinterest.com/Jeep)) and YouTube ([youtube.com/TheJeepChannel](http://youtube.com/TheJeepChannel)). Tune in, turn us on and get out into the virtual world where thrilling adventures are happening every single day.

**JEEP JAMBOREES.** For those who are driven by an adventurous spirit, we invite you to join us on the trail. You can head for parts unknown or return to fun, familiar places. Jeep Jamboree USA offers off-road adventure weekends that bring together the outdoors, down-to-earth people and their Jeep 4WD vehicles. We invite you to explore America's remote backcountry, where great friendships and memories are made.

**DISCLAIMERS AND DISCLOSURES**

(1) Best-in-Class 4x4 capability based on Jeep Cherokee offering 2-speed power transfer unit (PTU) with rear locking axle, low-range 4x4 capability, exclusive Jeep Selec-Terrain with 5 settings (including snow) and industry-first: fully disconnecting drive line. Jeep "Mid-Size SUV" sub-segmentation based on 13MY cross-shop activity: Ford Escape, Honda CR-V, Hyundai Santa Fe Sport (5-passenger), Subaru Forester, Toyota RAV4, Chevrolet Equinox and Kia Sorento. Excludes vehicles with 3rd-row seating. (2) Jeep "Mid-Size SUV" sub-segmentation based on 13MY cross-shop activity: Ford Escape, Honda CR-V, Hyundai Santa Fe Sport (5-passenger), Subaru Forester, Toyota RAV4, Chevrolet Equinox and Kia Sorento. Excludes vehicles with 3rd-row seating. (3) The Advanced Front Air Bags in this vehicle are certified to the new U.S. federal regulations for advanced air bags. Children 12 years old and younger should always ride buckled up in a rear seat. Infants in rear-facing child restraints should never ride in the front seat of a vehicle with a passenger front air bag. All occupants should always wear their lap and shoulder belts properly. (4) Do not attempt water fording unless depth is known to be less than 20 inches. Traversing water can cause damage that may not be covered by the new vehicle warranty. Always off-road responsibly in approved areas. (5) No system, no matter how sophisticated, can repeal the laws of physics or overcome careless driving actions. Performance is limited by available traction, which snow, ice and other conditions can affect. When the ESC warning lamp flashes, the driver needs to use less throttle and adapt speed and driving behavior to prevailing road conditions. Always drive carefully, consistent with conditions. Always wear your seat belt. (6) Always look before proceeding, electronic drive aid is not a substitute for conscientious driving; always be aware of your surroundings. (7) ACC is a driver convenience system, not a substitute for active driver involvement. The driver must remain aware of traffic conditions and be prepared to use brakes to avoid collisions. (8) FCW system is solely an alert system for the front of the vehicle which does not take any actions to change vehicle dynamics to avoid a collision, not a substitute for active driver involvement. The driver must remain aware of traffic conditions and be prepared to use brakes to avoid collisions. (9) LDW is a driver convenience system, not a substitute for active driver involvement. The driver must remain aware of traffic conditions and be prepared to use brakes to avoid collisions. (10) Always check visually for vehicles prior to changing lanes. (11) Uconnect Access is available only on equipped vehicles purchased within the continental United States and Alaska. Services can only be used where coverage is available, see coverage map for details. For a complete list of Uconnect Access services, please visit [http://www.driveuconnect.com/features/uconnect\\_access/packages](http://www.driveuconnect.com/features/uconnect_access/packages). (12) SiriusXM services require subscriptions, sold separately after the 12-month trial included with the new vehicle purchase. **If you decide to continue your service at the end of your trial subscription, the plan you choose will automatically renew and bill at then-current rates until you call SiriusXM at 1-866-635-2349 to cancel.** See SiriusXM Customer Agreement for complete terms at [www.siriusxm.com](http://www.siriusxm.com). All fees and programming subject to change. Our satellite service is available only to those at least 18 and older in the 48 contiguous USA and D.C. Our Internet radio service is available throughout our satellite service area and in AK and HI. ©2013 Sirius XM Radio Inc. Sirius, XM and all related marks and logos are trademarks of Sirius XM Radio Inc. (13) MasterCard is a registered trademark of MasterCard International Incorporated. This card is issued by First Bankcard, a division of First National Bank of Omaha, pursuant to a license by MasterCard International Incorporated. (14) Uconnect Web feature is not intended for use by the driver while the vehicle is in motion. Always drive carefully. Subscription required. (15) Phone must support Bluetooth Phone Book Access Profile (PBAP). (16) The SiriusXM Travel Link data displays and individual product availability vary by vehicle hardware. Not all vehicles or devices are capable of receiving all Travel Link services offered by SiriusXM; Weather Forecast, Current Conditions may not be available in all locations; and features of individual systems will vary. Images shown are for representative purposes only and are not real products. For actual features and images of real products, consult the vehicle manufacturer. SiriusXM is not responsible for any errors or inaccuracies in the SiriusXM Travel Link services or their use. Our satellite service is available only to those at least 18 and older in the 48 contiguous USA and DC. Our Sirius satellite service is also available in PR (with coverage limitations). Our Internet radio service is available throughout our satellite service area and in AK and HI. (17) Always sit properly with the head restraint properly adjusted. Never place anything in front of the head restraint.

This brochure is a publication of Chrysler Group LLC. All product illustrations and specifications are based upon current information at the time of publication approval. Chrysler Group LLC reserves the right to make changes from time to time, without notice or obligation, in prices, specifications, colors, materials and to change or discontinue models, which are considered necessary to the purpose of product improvement or for reasons of design and/or marketing. Jeep, the Jeep grille, CommandView, Go Anywhere, Do Anything, Latitude, Mopar, ParkSense, ParkView, Pentastar, Selec-Speed, Selec-Terrain, Trailhawk, Trail Rated and Uconnect are registered trademarks and Badge Of Honor, Cherokee, Jeep Active Drive I, Jeep Active Drive II, Jeep Active Lock, Keyless Enter 'n Go, LaneSense, Mopar Owner Connect, Mopar Vehicle Protection and TigerShark are trademarks of Chrysler Group LLC. MultiAir is a registered trademark of C.R.F. Societ  Consortile per Azioni, used under license by Chrysler Group LLC. Alpine and the Alpine logo are registered trademarks of Alpine Electronics, Inc. All rights reserved. Bluetooth is a registered trademark of Bluetooth SIG, Inc. Facebook is a registered trademark of Facebook, Inc. Firestone is a registered trademark of Bridgestone Americas Tire Operations, LLC. Instagram is a registered trademark of Instagram, Inc. iPad, iPhone, iPod and iTunes are registered trademarks of Apple Inc. Pinterest is a registered trademark of Pinterest, Inc. Sirius, XM and all related marks and logos are trademarks of SiriusXM Radio Inc. The Twitter name, logo, Twitter T, Tweet and Twitter bird are trademarks of Twitter, Inc. in the United States and other countries. Yelp is a registered trademark of Yelp, Inc. YouTube and Google+ are registered trademarks of Google Inc. © 2013 Chrysler Group LLC. All rights reserved.





TO DO EVERYTHING

COURAGE KNOWS NO BOUNDARIES

TO GO EVERYWHERE

**Jeep**

Jeep is a registered trademark of Chrysler Group LLC.

2014 CHEROKEE





{ HAVE IT ALL }

NEW 7-INCH MULTI-VIEW DISPLAY\*

FOUR NEW INTERIOR COLOR PALETTES

AWARD-WINNING UCONNECT® TECHNOLOGY

VOICE COMMAND HANDS-FREE COMMUNICATION

NEW JEEP® CARGO MANAGEMENT SYSTEM

ADVANCED LED LIGHTING TECHNOLOGY

DAYTIME RUNNING LIGHTS

UCONNECT ACCESS APPS\*

MULTIPLE STORAGE AND CUBBY AREAS

WIRELESS CHARGING PAD\*

FOLD-FLAT FRONT-PASSENGER SEAT WITH UNDER-CUSHION STORAGE\*

60/40 SPLIT-FOLDING RECLINING REAR SEATS

FORE/AFT ADJUSTABLE REAR SEATS

ALPINE® PREMIUM AUDIO SYSTEM\*

CLIMATE CONTROL

PARKVIEW® REAR BACK-UP CAMERA<sup>6\*</sup>

PARALLEL AND PERPENDICULAR PARK ASSIST<sup>6\*</sup>

HEATED STEERING WHEEL\*

SIRIUSXM® SATELLITE RADIO<sup>12\*</sup>


KEYLESS ENTER 'N GO\*

\*Available features.

Here is a cabin that allows you to command the road ahead  
from a very comfortable and informed vantage point.  
Cherokee's advanced technology delivers data that can keep you on track, handing you the freedom  
to head out with confidence. Add to this the luxurious comfort of supple,  
ultra-cushioned seating and surrounding soft touch points, plus a long list of available options.  
The road ahead is met with authentic style combined with legendary comfort.



CHEROKEE TRAILHAWK INTERIOR SHOWN IN MOROCCO - BLACK.



It's more than a new way of looking at the world,  
it can take you to a new world altogether.

Traveling to destinations with a confidence that only a Jeep® brand SUV can deliver, the 2014 Jeep Cherokee connects you with award-winning Uconnect® technology and a fully luxurious interior, available in a stunning world color palette inspired by Italy's Mount Vesuvius, for a look unlike any other.

Opt for CommandView®, the new dual-pane full-length sunroof, and passengers in all rows will get more from every adventure, anywhere they go.



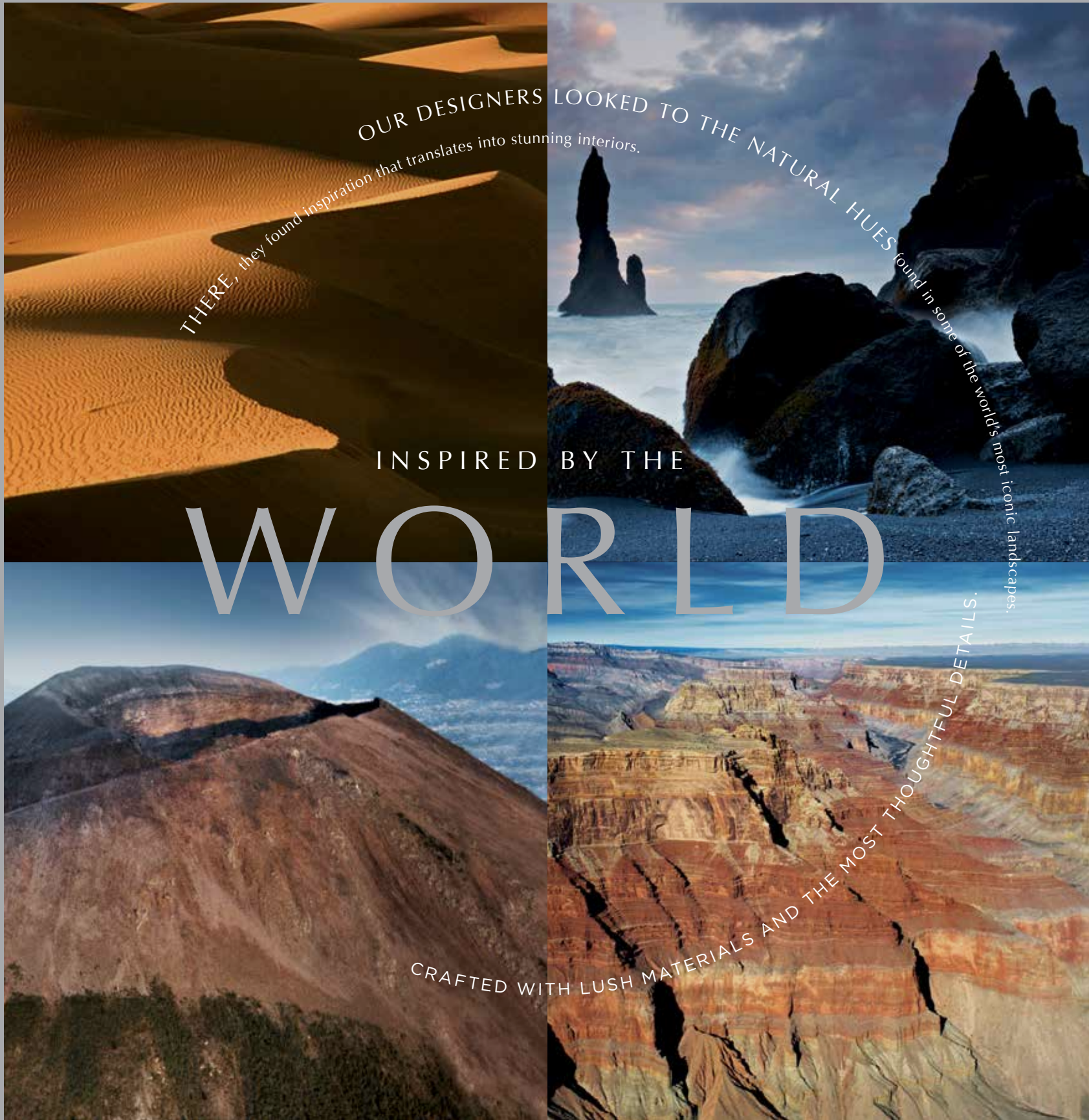
RUGGED MEETS **REFINED**

Every sculpted inch of the all-new Jeep® Cherokee interior has been thoughtfully designed to offer versatile convenience and absolute beauty. Cherokee Trailhawk offers the available Morocco-Black interior crafted from premium Nappa leather trim with contrast stitching in Ruby Red and soft-touch surfaces, creating a completely unique and captivating driving experience.

Vast, plentiful and clever storage options abound. A convenient bin on the instrument panel hides valuables, as does the hidden in-seat compartment under the available fold-flat passenger seat—simply lift up the seat cushion for easy access. Glove box storage is large enough to hold most laptop computers.

Convenience meets utility with a center console that bears two cup holders that accept 12-ounce cans and 1.5-liter bottles. Front-seat passengers access a side-saddle console pocket that can hold books and tablets.

An optional wireless charging pad is concealed within the center console. Nearby, an integrated phone docking station and USB, SD, auxiliary and power port outlets give Cherokee a leading edge on technology.



OUR DESIGNERS LOOKED TO THE NATURAL HUES found in some of the world's most iconic landscapes.

# INSPIRED BY THE WORLD

CRAFTED WITH LUSH MATERIALS AND THE MOST THOUGHTFUL DETAILS.

**STEERING STRONG** Cherokee's sporty-looking steering wheel acts as your Command Central. The performance-grip styling puts fingertip controls safely at hand: Uconnect® phone, Voice Control buttons and Multi-View Display scrolls are at left; Cruise Controls and cluster controls are also featured.

**NAVIGATION** Partnering with your NAV radio, the available Multi-View Display can show turn-by-turn directions, as well as provide additional details that help you navigate your way.

**VEHICLE DYNAMICS** Are your tires properly inflated? You'll be notified if the pressure is low on any tire.

**PERFORMANCE** Get real-time fuel economy data. See how many miles you can travel before you need to refuel. Watch how the available Selec-Terrain® system is functioning with the perspective visuals.

**VEHICLE ALERTS** You'll receive visual notification for available safety systems, such as Forward Collision Warning® with crash mitigation and LaneSense™ Lane Departure Warning.® Set the distance for the available Adaptive Cruise Control with Stop & Go.7



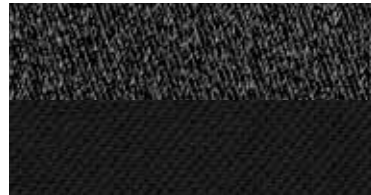
## CONFIGURABLE 7-INCH MULTI-VIEW DISPLAY

**DATA DRIVEN**  
The fingertip controls for the available Multi-View Display are on your steering wheel and can instantly scroll you through a rich selection of vehicle data. This vast array of information is displayed on the 7-inch Multi-View Display that's within clear view behind the steering wheel. Standard on Trailhawk and Limited models.





**MOROCCO** Inspired by the magical shadows of the Marrakech market and the sublime softness of the desert, this classic Black interior shows off Cherokee in luxuriously deep tones. Available.



Brook II Cloth/Portland Cloth — Morocco-Black Sport, Latitude (Standard)



Nappa Leather with Protein Vinyl/Rivet Cloth and Ruby Red accent stitching — Morocco-Black Trailhawk (Standard) Late availability



Nappa Leather with Ruby Red accent stitching — Morocco-Black Trailhawk (Available)



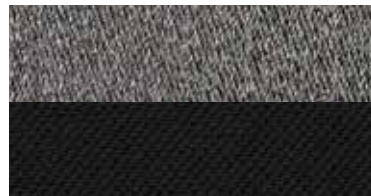
Nappa Leather/Caprice with Light Frost Beige accent stitching — Morocco-Black Limited (Standard)



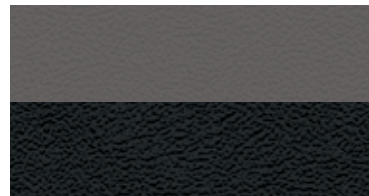
Nappa Axis II Perforated Leather/Caprice with Light Frost Beige accent stitching — Morocco-Black Limited (Available)



**ICELAND** A diverse landscape of glaciers, mountains and rugged coastline provided the inspiration for a timeless contrast of Iceland-Black and Iceland Gray. Available.



Brook II Cloth/Portland Cloth — Iceland-Black/Iceland Gray Sport, Latitude (Standard)



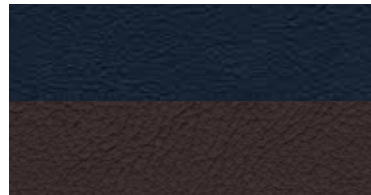
Nappa Leather/Caprice — Iceland-Black/Iceland Gray Limited (Standard)



Nappa Axis II Perforated Leather/Caprice — Iceland-Black/Iceland Gray Limited (Available)



**MOUNT VESUVIUS** This unique pairing of Indigo Blue and Jeep<sup>®</sup> Brown mirrors the evening hues of Italy's Mount Vesuvius. Open-pore Zebrano wood trim, Silver-colored bezels and accent stitching finish the vision. Available.



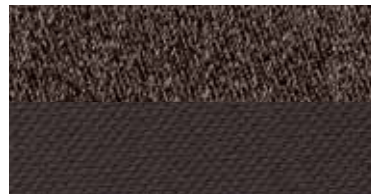
Nappa Leather/Caprice with Pearl accent stitching — Vesuvio- Jeep Brown/Indigo Blue Limited (Standard)



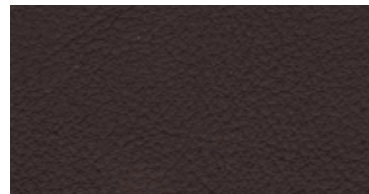
Nappa Axis II Perforated Leather/Caprice with Pearl accent stitching — Vesuvio- Jeep Brown/Indigo Blue Limited (Available)



**GRAND CANYON** Crafted after the shades of warm brown and amber found within the majestic cliffs of the Grand Canyon. Beautiful Copper-colored bezels and accent stitching enhance the overall rich appeal. Available.



Brook II Cloth/Portland Cloth — Grand Canyon- Jeep Brown Latitude (Standard) Late availability



Nappa Leather with Ruby Red accent stitching — Grand Canyon- Jeep Brown Trailhawk (Available)



With Keyless Enter 'n Go, your key is stashed in your pocket or purse, so you can open the door, take a seat, push a button and head out for fun.

Heated and ventilated front seats are must-have options that perform double duty: provide quick warmth to ward off the chill or help cool seating when temps rise.

With the touch of a button, Cherokee's available heated steering wheel adds comfort to cold-weather driving.



With the award-winning and intuitive Uconnect® system, you're always connected, informed, entertained and more productive. You can also voice your choice to control nearly every feature hands-free with the latest available voice recognition technology. This is how you advance your world in a world that's very advanced.

**VOICE COMMAND.** It simplifies driving by letting you keep your eyes on the road and your hands on the wheel. Use your voice to select AM/FM radio stations or SiriusXM® Satellite Radio<sup>12</sup> channels or make calls. Select navigation destinations, set cabin temps or show fuel prices. This smart technology can understand commands in English, French and Spanish.

**PHONE/TEXT.** Plans can change en route. Safely spread the word with a hands-free phone call or use your voice to reply to a text message using Voice Text Reply.\* Pair up to eight Bluetooth® enabled phones, and Voice Command allows you to easily "call Judy" or "redial" as you negotiate midtown traffic.

**WIFI.<sup>14</sup>** All along the way, you can upload and download, post and search. Uconnect with available WiFi links compatible devices to the Web. Your office is as mobile as you are. Connect Web-enabled gaming devices and passengers can stay in play. Subscription required. Sold separately. (Available)

**NAVIGATION.** Dinner reservations at the new place in town? Uconnect® employs GPS navigation for audible turn-by-turn directions, and detailed 3D maps help to ensure you arrive on time. The NAV is integrated into your Multi-View Display so you can see directions front and center. Use Voice Command and say the complete address, city and state, and get directions quickly. SiriusXM Traffic<sup>12</sup> helps drivers pick the fastest and most fuel-efficient route based on traffic conditions. More fun, less traffic. Your first year of SiriusXM Traffic<sup>12</sup> service is included.

**ENTERTAINMENT.** It doesn't get any better than this. With the SiriusXM® All Access<sup>12</sup> package, you get every channel available on your satellite radio, along with the freedom to listen anywhere with SiriusXM Internet Radio. With Instant Replay, you have the ability to Pause, Replay, Rewind and Fast-forward live audio channels. SiriusXM also features Artist Seek/Song Seek giving you the ability to "save" the current artist or song into memory and allow the radio to alert you when that artist or song is played on other channels.

## UCONNECT® ACCESS

A NEW LEVEL OF INNOVATION

This new suite of available Uconnect features and services represents the next generation of in-vehicle connectivity. With the simplicity of Voice Command and fingertip control, you can now access all of these brilliant offerings:

**9-1-1 CALL.** In the event of an emergency, a button on your rearview mirror can connect you with local authorities.

**ROADSIDE ASSISTANCE CALL.** Flat tire or need a tow? The Assist button on your rearview mirror can connect you to Roadside Assistance, which automatically knows your vehicle and location. Additional fees may apply.

**THEFT ALARM NOTIFICATION.** Choose to receive a text or email alert anytime your vehicle's theft alarm is activated.

**STOLEN VEHICLE ASSISTANCE.** If your vehicle is ever stolen, Uconnect can provide its location to aid police in recovery.

**UCONNECT ACCESS APP.**

Use your computer or the custom smartphone app from virtually anywhere to remotely lock or unlock your vehicle, to start the engine to warm up or cool down the interior or to sound the horn and flash the lights.

**VOICE TEXT REPLY.\***

Powerful, Cloud-based voice texting on compatible Bluetooth® phones lets driver dictate an original message or hear a text read. Hands stay on the wheel, eyes stay on the road and driver stays safely connected. (Available)

**WIFI HOTSPOT.** Create a mobile, on-demand hotspot in and around your vehicle, so passengers can stay securely connected wirelessly on their personal devices. Subscription required. Sold separately.

**YELP.®**

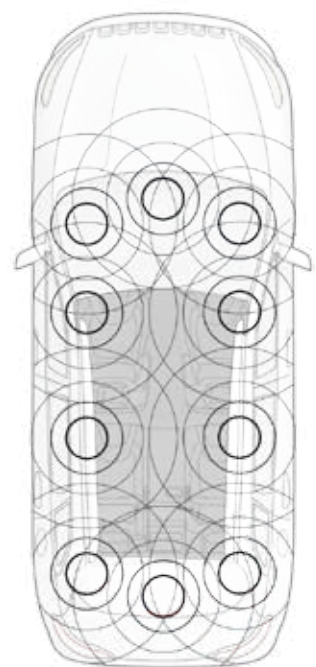
Conduct a real-time local search to find restaurants, coffee shops and other businesses, sorted by rating and location.

**UCONNECT CARE.**

Questions about a Uconnect feature, app or your new Cherokee? Press the Access button to connect with the right source for answers.

\*To use Voice Texting you will need a Uconnect Access subscription and a smartphone with a Bluetooth Message Access Profile (MAP). Some smartphones, including iPhone®, do not currently support Bluetooth MAP.

## ADVANCED TECHNOLOGY



### ALPINE

**PREMIUM AUDIO SYSTEM**  
Audiophiles can opt for Cherokee's premium 9-speaker sound system with an eight-inch subwoofer, designed in tandem with Alpine®, the leading manufacturer of high-performance mobile electronics. The system's 11 channels pump sound by way of 506 watts of power for a dynamic sound-fest to inspire music-filled travel.

**NAVIGATION WITH 3D MAPPING.** Use your voice to enter a complete address in one step. Uconnect® will provide mapping on its 8.4-inch touch screen, as well as audible turn-by-turn directions. You'll see full-color three-dimensional modeling of urban destinations to help identify landmarks and street junctions. This feature is available with the Uconnect 8.4AN radio. **SiriusXM TRAFFIC**

**HANDS-FREE PHONE.** Uconnect easily connects with your compatible phone, and allows quick access to your stored contacts.<sup>15</sup> With Voice Command, you can say who you want to call. A standard feature on all radios.

**VARIETY ENTERTAINMENT.** Connect your compatible media device, stream your music via Bluetooth® Streaming Audio or SD card, or listen to HD radio (8.4AN only). And with SiriusXM® Satellite Radio,<sup>12</sup> you can access 160 channels of news, sports, talk and premium entertainment (your first year of service is included).

**SIRIUSXM ALL ACCESS.<sup>12</sup>** It doesn't get any better than this. With the SiriusXM All Access<sup>12</sup> package, you get every channel available on your satellite radio, including commercial-free music, plus sports, news, talk and entertainment. Plus, listen wherever you go on your portable devices with a SiriusXM Internet Radio subscription included with your one-year trial. Options in all the places life takes you. **(SiriusXM) SATELLITE RADIO**

**SIRIUSXM TRAVEL LINK.<sup>16</sup>** Get the latest national and local weather reports and ski slope conditions while you're on the road. Find the best fuel prices at nearby gas stations. Check in-game scores of your favorite team or see how they fared in their last matchup. See what's playing and when at the nearest movie theatre. Your first year of SiriusXM Travel Link<sup>16</sup> service is included. **SiriusXM TRAVEL LINK**

**VOICE TEXT REPLY.\*** Powerful Cloud-based voice recognition allows you to send text messages from your Bluetooth enabled phone without taking your hands off the wheel or focus from the road. (Available)

**APPS.†** Uconnect Access<sup>11</sup> turns your vehicle into a WiFi hotspot via the power of the Cloud. This suite of new services includes 9-1-1 Call, Roadside Assistance, Stolen Vehicle Assistance, Theft Alarm Notification, Voice Texting and a smartphone app that enables you to lock and unlock your doors and start your car. Uconnect Access<sup>11</sup> brings the next level of mobile in-vehicle technology to your fingertips. (Available)

\*Voice Text Reply is not free-form texting. You can only listen to text messages and respond with preset messages. Check Uconnectphone.com for compatibility.

†Availability of applications subject to change.



### FULL-COLOR 8.4-INCH 3D TOUCH SCREEN

What a beautiful way to stay connected. Uconnect® puts you in full control with an available 8.4-inch touch screen conveniently positioned front and center. Control and data are displayed in crystal clarity. Welcome to Command Central.







> **STRETCH OUT.**  
 Second-row passengers gain first-class legroom, with space reserved for carry-ons too. Cherokee's configurable 60/40 split-folding second-row seats can recline six degrees and also adjust fore and aft, so rear-seat passengers can stretch out in roomy comfort.

< **UTILITY WITH PURPOSE.**  
 The exclusive Jeep® Cherokee Cargo Management System enables many innovative and thoughtful storage solutions, including a Storage Locker, Emergency Kit, Foldable Cooler, First Aid Kit and more — all Authentic Jeep Accessories by Mopar®. See your Jeep brand dealer for the latest parts and accessories.



## BRILLIANT VERSATILITY

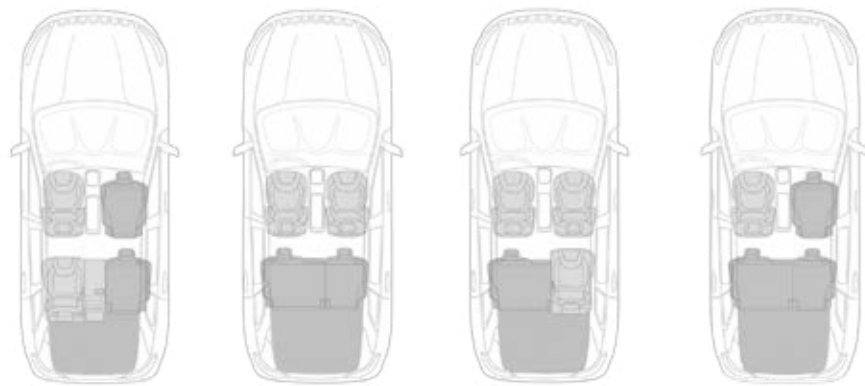


**FUN WITH PURPOSE.** It's the little and not-so-little surprises that add to the fun factor of Cherokee's functional interior landscape. Let's talk about storage spaces — there are 19 cubbies, pockets and bins throughout, giving you plenty of spots to store phones, computers, tablets, maps, gaming devices — you get the idea. Flip up the floor of the rear cargo area and you'll find three levels (depending on vehicle configuration) of rear cargo under-floor storage systems, each with an integrated storage tray to store valuable treasures. Look up above the rearview mirror and there's a handy spot to keep your sunglasses. Option the fold-flat front-passenger seat for another secret spot that's revealed when you simply flip up the seat pad.

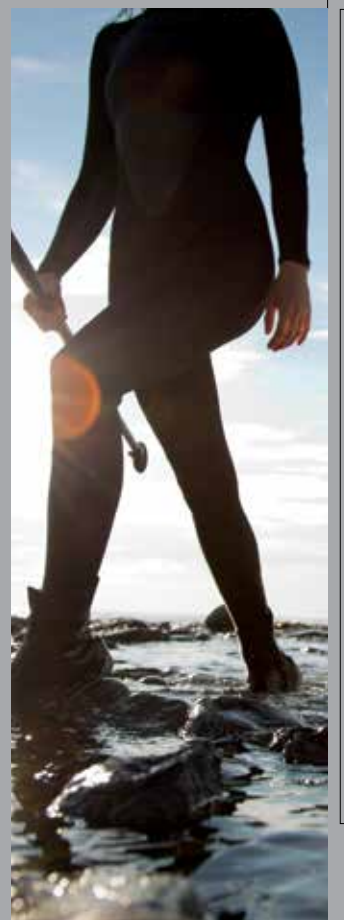
**CONFIGURE WITH PURPOSE.** Travel with up to four adult passengers in Cherokee, with room behind the rear seats for groceries or gear. The 60/40 split-folding rear seats can travel up to six inches fore or aft for adjustable leg-room flexibility. When the entire rear bench is folded, you have a nearly flat surface offering storage space of approximately 54.9 cu ft.

### EVERYTHING IN PLACE

- Overhead storage
- Upper instrument-panel storage bin
- Cubby below radio (available)
- Driver lower-left cubby
- Media center
- Saddle storage
- Glove box
- Passenger-side map pocket
- Driver-side map pocket
- Two cup holders
- Pencil/pen holder
- Two levels of storage in center console
- Under-seat storage (available)
- Driver-side map pocket on backside of seat
- Rear door map pocket
- Rear door map pocket
- Cargo Management System
- Rear quarter-trim storage
- Under-cargo storage



**PLENTY OF OPTIONS** When it comes to carrying a combination of people and cargo, the optional fold-flat front-passenger seat and the 60/40 split on the rear seatbacks can be configured to your liking, allowing you to haul luggage, boxes, golf clubs, ski equipment and so much more.





## PEACE-OF-MIND SAFETY & SECURITY

# 10

This guardian keeps consistent watch over you and yours. Over 70 standard and available safety and security features add to Cherokee's brave stewardship, including:

**10 STANDARD AIR BAGS.<sup>3</sup>** Your sense of security is fully met with Cherokee's all-around air bag<sup>3</sup> system. Full-length side-curtain driver and front-passenger inflatable knee-bolster air bags,<sup>3</sup> seat-mounted for front and rear occupants, side thorax and advanced multistage front air bags<sup>3</sup> all work in tandem to help provide protection. Standard.

**ELECTRONIC STABILITY CONTROL<sup>5</sup> (ESC).** A vehicle-wide network of safety sensors helps maintain vehicle control, providing instant aid should they detect you're veering off your intended path. ESC coordinates Electronic Roll Mitigation (ERM), antilock brake system (ABS) and Brake Assist, All-Speed Traction Control and available Trailer Sway Control (TSC), sending them into action when needed. Standard.

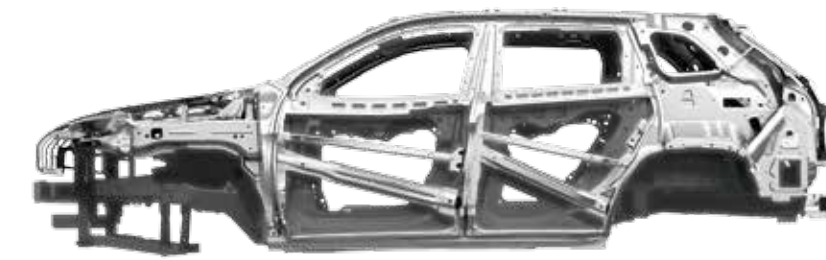
**RAIN BRAKE SUPPORT.** Wet pavement can prove challenging to safe travel. This system automatically helps maintain optimal braking by keeping brake rotors dry in rainy conditions, with assistance from the Electronic Stability Control<sup>5</sup> (ESC).

**ELECTRONIC ROLL MITIGATION (ERM).** As an extension of ESC,<sup>5</sup> ERM employs ESC sensors to anticipate potential risk situations. If things get rough, ERM takes immediate action to help you maintain stability and remain under control. Standard.

**TRAILER SWAY CONTROL (TSC).** Crosswinds and traffic hold no sway over you and your payload. As part of ESC,<sup>5</sup> TSC helps keep you and the toys you are towing safely on course.



**UCONNECT® ACCESS WITH 9-1-1 ROADSIDE ASSISTANCE.** Emergency help is always within reach. Two available buttons mounted on the rearview mirror connect you with emergency services or roadside assistance and Uconnect customer care.



Cherokee delivers exceptional peace of mind with a hero's heart — a strong foundation constructed with 65 percent high-strength steel.

# CHEROKEE

TRIM LEVELS

## CHEROKEE TRAILHAWK

Includes Latitude features, plus or replacing:

- Jeep® Active Drive Lock 4WD with rear-axle locker
- Two Trail Rated® badges
- 1-inch raised ride height
- Off-road suspension, skid plates
- 17-inch off-road aluminum wheels with all-terrain tires
- Full-size spare tire
- 7-inch customer-configurable Multi-View Display
- Uconnect® 8.4-inch color touch screen
- SiriusXM® Satellite Radio<sup>12</sup>
- Off-road front and rear fascias
- Black daylight opening (DLO)
- Red tow hooks (2 front/1 rear)
- Available Leather Interior Group
- Premium cloth/leather seats (late availability)
- Cargo net, all-weather floor mats
- Selec-Speed® Control
- Leather-wrapped shift knob
- Selec-Terrain® with Rock mode
- Red interior accent stitching

## CHEROKEE LIMITED

Includes Latitude features, plus or replacing:

- 18-inch polished aluminum wheels
- 7-inch customer-configurable Multi-View Display
- Uconnect® 8.4-inch color touch screen
- SiriusXM® Satellite Radio<sup>12</sup>
- Leather-trimmed heated front seats
- 8-way power driver seat with 4-way power lumbar
- Passive entry/Keyless Enter 'n Go
- Automatic headlights
- Dual-Zone Automatic Temperature Control
- Bright lower fascia accents
- Electrochromatic inside rearview mirror
- Heated outside mirrors with turn signals and courtesy lamps
- Security alarm
- Universal garage door opener
- ParkView® Rear Back-Up Camera<sup>6</sup>
- Cargo net, tonneau cover
- Remote engine start
- Heated steering wheel and leather-wrapped shift knob
- Windshield wiper de-icer

## CHEROKEE LATITUDE

Includes Sport features, plus or replacing:

- 17-inch painted aluminum wheels
- Uconnect 5.0 color touch-screen radio with integrated HVAC controls
- 115-volt outlet
- Driver and passenger one-touch up/down windows
- Deep-tint privacy glass
- Body-color mirrors
- Body-color door handles
- Bright Chrome daylight opening (DLO)
- Bright roof rails
- Front reflector fog lamps
- Leather-wrapped steering wheel
- Fold-flat front-passenger seat with in-seat storage
- Ambient LED lighting

## CHEROKEE SPORT

- 2.4L I-4 TigerShark engine with MultiAir®2 technology
- 9-speed automatic transmission with electronic range select
- Selec-Terrain® Traction System on 4x4 models
- 17-inch full-face steel wheels/all-season tires
- Bi-functional halogen projector headlamps
- LED taillamps
- Electronic Stability Control<sup>5</sup> (ESC) with Electronic Roll Mitigation, Hill Start and Trailer Sway Control
- Front and rear side-curtain and front and rear seat-mounted side air bags<sup>3</sup>
- Front driver and passenger active head restraints<sup>17</sup>
- Media center/electronics storage with power connections
- Uconnect 5.0 color touch-screen radio
- Uconnect Voice Command
- Power windows — driver one-touch down
- Remote keyless entry with panic alarm
- Steering wheel-mounted cruise control

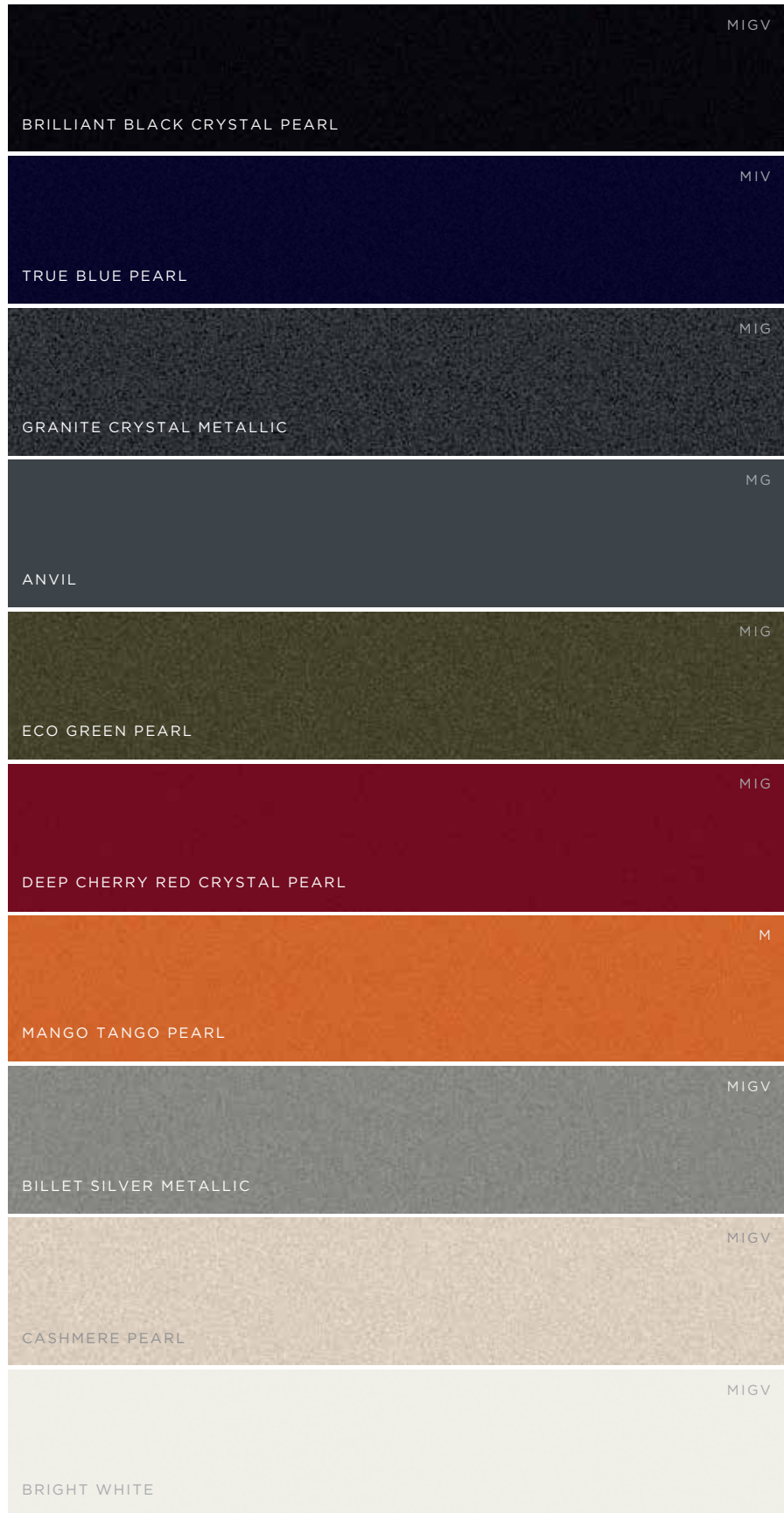
CHEROKEE LIMITED SHOWN IN BRIGHT WHITE.

CHEROKEE TRAILHAWK SHOWN IN ANVIL.



CHEROKEE LATITUDE SHOWN IN TRUE BLUE PEARL.

CHEROKEE SPORT SHOWN IN CASHMERE PEARL.



M = Morocco-Black      I = Iceland-Black/Iceland Gray  
 G = Grand Canyon-Jeep, Brown      V = Vesuvio-Jeep Brown/Indigo Blue



CHEROKEE TRAILHAWK SHOWN IN BILLET SILVER METALLIC.



TO DO EVERYTHING

COURAGE KNOWS NO BOUNDARIES

TO GO EVERYWHERE

**Jeep**

Jeep is a registered trademark of Chrysler Group LLC.



2014 CHEROKEE

2014 CHEROKEE



Jeep®