

■ Moonroof Air Deflector
Helps reduce wind noise and sun glare.
F541SAJ000



■ Hood Protector
Matches the contours of the hood and helps protect it from stone chips and bugs.
E231SAJ000



■ Front Bumper Underguard
Adds a rugged look while protecting the lower bumper area from brush and debris.
E551SAJ000 (Standard on Limited Models)



■ License Plate Frames
Frames are available with a variety of UV resistant polyurethane logos and come in either mirror polish or matte black.
Matte Black
SOA342L124 (SPT)
SOA342L126 (STI)

■ Front License Plate Bracket
Stainless steel with black powder coated finish. Includes mounting hardware.
SOA342L120

■ Slim License Plate Frames
Manufactured from heavy-gauge 304 stainless steel that will not rust or corrode. Kit includes hardware hider caps.
SOA342L104 (Polished Stainless Steel)
SOA342L105 (Matte Black)

■ Valve Stem Caps
Add a finishing touch to your Subaru. These caps feature "O" ring seals to help keep the valve orifices clean.
SOA342L109 (SPT)
SOA342L114 (STI)
SOA342L128 (Subaru Star Cluster)



■ Puddle Lights
LED lights activate when vehicle doors are unlocked using the keyless entry. A soft glow illuminates the ground, aiding entry and exit of the vehicle.
H471SAJ000



■ 16" Aluminum Alloy Wheel
Add a touch of flair to your Outback 2.5i with these alloy wheels. Order four of each part number.
28111SC010 (Wheel)
28821SA030 (Center Cap)
28191SA000 (Valve Stem)
28192SA000 (Screw)

■ Illuminated Sill Plates
"SUBARU" emits a blue glow each time one of the front doors are opened.
H1010AJ000
H0070AJ000 (Wiring Harness*)



■ Interior Illumination Kit
Mood lighting activates with vehicle's headlights and casts a groovy blue glow onto the front footwell areas, forward storage pocket, and console beverage holders.
H7010AJ000
H0070AJ000 (Wiring Harness*)



*Only one wiring harness is required if installing both illuminated Sill Plates and Interior Illumination Kit in the same vehicle.

■ Key Fob
Made from 1/8" thick 304 stainless steel, with a brushed finish and permanent black laser etched graphics.
SOA342L115 (STI)
SOA342L116 (SPT)
SOA342L129 (Subaru)



■ Retractable Cargo Area Cover
Helps conceal the contents of the Outback cargo area.
65550AJ01AVH (2.5i Only)



■ Cargo Net - Rear
Neatly holds cargo and prevents it from sliding while the vehicle is in motion.
F551SAJ100



■ Cargo Net - Rear Seat Back
Additional net storage to help keep the cargo area organized.
F551SAJ000



■ Dog Guard/Compartment Separator
Separates pets and cargo from passenger area.
F551SAJ400
Not for use with child seats requiring tether straps.



■ Remote Engine Starter
Allows vehicle to be started by pushing a button from the convenience of home or the office (up to 400 feet away depending on obstructions) so that the vehicle's interior temperature is more comfortable upon entry. New for 2010, the start/stop button blinks to confirm the engine has started.
H001SAJ000



■ Ash Tray
Fits conveniently in the center console cup holder. Easily removed to empty contents.
J2070YA000
F6010AG010 (Mounting Sleeve)

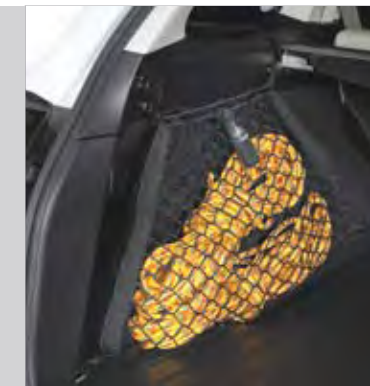
■ Fog Light Kit
Casts a low and wide beam of light to enhance vision in inclement weather.
H451SAJ100 (2.5i Only)



■ Bumper Corner Moldings
Helps protect the corners of painted bumpers from scratches and dings. Front and rear moldings included. Kit includes four moldings.
E7710AS200



■ Cargo Net - Side
Neatly holds smaller cargo items. Kit includes two nets.
F551SAJ200



■ Roof Cargo Carrier
Provides 13 cubic feet of lockable storage capacity. Opens from rear to accommodate loading from three sides. Measures 56" L x 36" W x 18" H.^{†††}
E361SAG200



■ Roof Cargo Carrier - Extended
Provides 16 cubic feet of lockable storage capacity. Convenient dual-side opening allows for loading from either side of the vehicle. Measures 76" L x 36" W x 16" H.^{†††}
E361SAJ200



■ Heavy-Duty Roof Cargo Basket
Heavy-Duty Roof Cargo Basket is constructed powder-coated steel. Includes mounting hardware, black stretch net with hooks and a custom fairing to help deflect wind and reduce noise. Measures 44" L x 39" W x 6.5" H.^{†††} Shown with Bike Carrier - Fork Mount and Bike Wheel Holder (both sold separately).
E361SSA200
E361SSA100 (Bike Carrier - Fork Mount)
E3610LS430 (Bike Wheel Holder)



■ Kayak Carrier
Cradles and securely transports most kayak hull shapes. Includes straps with padded buckles.^{†††}
E361SXA200 (Kayak Carrier)
E361SAJ000 (Clamps)



††† Consult vehicle owner's manual for total roof load limit.

■ Anti-Slip Mat (not shown)
Provides a slip resistant covering for rear cargo area trays, bins and carpeted surfaces.
J5010LS040



■ Bike Carrier - Roof Mounted
Lockable padded jaws clamp onto a bike with a 1"-3" downtube and hold it securely on the roof of the vehicle.^{†††}
E361SXA300 (Bike Carrier - Roof Mounted)
E361SAJ000 (Clamps)



■ Bike Carrier - Hitch Mounted
Slides into trailer hitch receiver. Carries one or two bicycles.
E3610AS940
To avoid blocking taillights, use only roof mounted bike carriers to transport bikes with solid disc wheels. Trailer Hitch sold separately.

■ Ski and Snowboard Carrier
New design holds up to six pairs of skis or four snowboards. May also be used to carry fishing rods.^{†††}
E361SAG500 (Ski Carrier)
E361SAJ100 (Clamps)



2010 Outback Accessories



Rear Bumper Cover
Helps protect the upper surface of the painted bumper from scratches and dings.
E771SAJ000



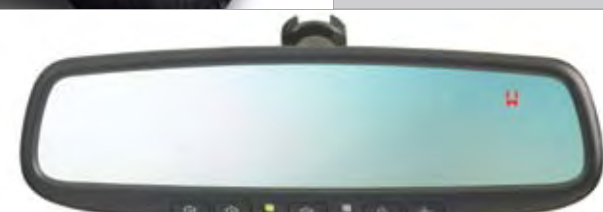
Wheel Arch Molding Kit
Black textured moldings help protect the wheel arch areas, while adding a rugged, yet classy look. The wheel arch moldings look great with the accessory Splash Guards.
E201SAJ000 (Set of four)



Splash Guards
Helps protect vehicle paint finish from stones and road grime.
J101SAJ000 (Set of four)



Auto-Dimming Mirror with Compass
Mirror automatically darkens when headlights are detected from behind the vehicle. Features an electronic compass with a red transfective display that projects the current direction onto the mirror's surface.
H501SAJ000



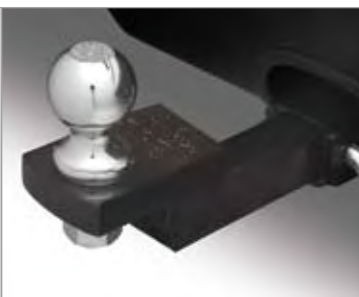
Auto-Dimming Mirror with Compass and HomeLink®
Mirror automatically darkens when headlights are detected from behind the vehicle. Features an electronic compass with a red transfective display. Three integrated HomeLink buttons can be programmed to operate most garage door openers and other HomeLink devices.
H501SAJ100



STI Shift Knob
The ultimate shift knob for your Outback. STI shift knobs combine the highest quality aluminum and leather materials, ergonomic shapes, and ideal weight balance.
C1010FG100 (6 M/T)



STI Duracon Shift Knob
Molded from Duracon polymer, this sleek looking and lightweight shift knob gives your Outback a finishing touch that sets it apart from the crowd.
C1010FG400 (6 M/T)



Trailer Hitch
Subaru hitches are engineered to the same rigorous standards as the rest of your Outback. The hitch is rated at 3,000 lbs. maximum towing capacity with 3.6L engine (2,700 lbs. maximum with 2.5L engine) and 200 lbs. maximum tongue weight.
Hitch ball not included. Trailer brakes may be needed.
L101SAJ000



Security System Upgrade - Shock Sensor
Activates security system alarm when impact to the vehicle is detected.
H7110AJ010



Wheel Locks
Helps to deter theft of wheels and tires.
B321SFG000 (Alloy Wheels)
T3010YS010 (Steel Wheels)



STI Short Throw Shifter
Significantly reduces shift throw lengths for crisper shifts and sportier driving feel.
C1010AJ100 (6 M/T)



All-Weather Floor Mats
Custom-fitted, heavy-gauge floor mats help protect vehicle carpet from sand, dirt and moisture.
Not intended for use over top of carpeted floor mats.
J501SAJ000



Battery Warmer
Warms vehicle's battery for easier starting in extremely cold weather. Plugs into a household electrical outlet.
J6010FS000



Car Cover
Helps protect the exterior of your Outback. Made of lightweight breathable material.
M001SAJ000
M0010AS020 (Car Cover Bag)



Engine Block Heater
Warms engine coolant to promote easier starting in extreme cold conditions. Plugs into a household electrical outlet.
A091SAS000 (2.5L)
A091SXA000 (3.6L)



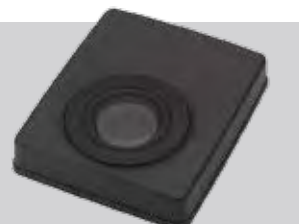
STI Pedal Pad Sets
New design aluminum pedal covers with non-slip surfaces and STI logo.
C8110FG010 (6 M/T)
C8110FG000 (A/T)



Media Hub
Play music through the vehicle's stereo system from your iPod or USB mass storage device and control it using the radio and steering wheel buttons. Displays song information on radio screen and charges most portable music devices.
H621SAJ200 (Excludes NAVI)
User experience varies by music storage device. Not all devices are compatible. Details at subaru.com/MediaHub.



Media Hub with Streaming Audio
Includes all the features of Media Hub plus the ability to wirelessly stream music using Bluetooth® technology into the vehicle's stereo system.
H621SAJ300 (Excludes BlueConnect, Harman Kardon® & NAVI)
User experience varies by music storage device. Not all devices are compatible. Details at subaru.com/MediaHub.



Subwoofer
Big bass sound from a small package. Subwoofer is powered by an integrated amplifier and mounts under driver's seat.
H630SAJ000 (Excludes Harman Kardon & NAVI)
SOA635080 (Seat Rail Covers)



Tweeter Kit
Special speakers enhance high-frequency audio response and improve stereo imaging.
H6318AJ000 (Excludes Harman Kardon & NAVI)



Satellite Radio
Satellite radio allows you to hear your favorite programming virtually anywhere in the continental US with up to 170 channels of digital quality music, sports, talk, and comedy. Your choice of XM® or SIRIUS®.
H621SAJ100 (XM Satellite Radio Kit)
H621SAJ000 (SIRIUS Satellite Radio Kit)
Required monthly subscription sold separately after trial period ends. Additional fees, equipment, and taxes may apply. Not available in Hawaii and Alaska.



SPT Oil Cap & Battery Hold Down
Replacement oil cap and battery hold down are manufactured from billet aluminum, anodized in SPT Gunmetal Gray or Performance Blue and laser etched with SPT logos.
SOA3881010 (Oil Cap-Gray)
SOA3881000 (Battery Hold Down-Gray)
SOA3881040 (Oil Cap-Blue)
SOA3881030 (Battery Hold Down-Blue)



BlueConnect®
Bluetooth wireless technology combined with advanced voice recognition software allow you to make and receive calls, store phonebook information, and recognize up to seven different cell phones. Voice recognition supports English, North American Spanish and Canadian French. Some phones may not be compatible. Details at subaru.com/Bluetooth.
H001SAJ100 (Excludes Harman Kardon & NAVI)



Severe Weather Companion
The severe weather kit contains just about everything needed to handle an unexpected weather emergency while traveling. Included are items which help provide the basic necessities such as warmth, light, water, first aid, and the ability to signal for help; all packaged in a handy padded canvas carrying case.
SOA868V9500

Cargo Organizer
Conveniently transports your outdoor gear or up to four grocery bags. Quickly collapses for easy storage when not in use.
SOA567T100



■ Appearance
■ Performance
■ Protection
■ Sound System
■ Utility and Convenience



Subaru of America reserves the right to change or withdraw accessories at any time without prior notice and without incurring the obligation to make changes to any accessories previously sold. All images are representative.



Subaru, Outback, STI and SPT are registered trademarks. Bluetooth is a trademark of Bluetooth SIG. BlueConnect and HomeLink are trademarks of Johnson Controls, Inc. iPod is a trademark of Apple, Inc. SIRIUS is a trademark of SIRIUS XM Radio, Inc. XM is a trademark of XM Satellite Radio, Inc. Harman Kardon is a trademark of Harman International Industries, Inc.