

Mercedes-Benz
of
VALENCIA



Mercedes-Benz

Genuine Accessories for the GL-Class

APPEARANCE

04

- Light-Alloy Wheels
- Exterior Appearance
- Interior Appearance

ENTERTAINMENT
& COMMUNICATION

08

- Media Integration
- Navigation Map Update
- Rear-Seat Entertainment System

UTILITY & CARE

10

- Carrier Systems
- Cargo Management
- Car Care
- Child Safety Seats



20" 2-Tone 5-Spoke Wheel | p. 4

Side Running Boards | p. 7



■ Roof Cargo Container | p. 11

■ Chrome Door Handle Inserts | p. 7

Genuine
Mercedes-Benz
Accessories

GL-CLASS



High-Shine Chromed Exterior Mirror Cover

Rounds off your GL-Class's chrome finish and protects the paintwork from scratches.

| Comes in a set of two |



20" 2-Tone 10-Spoke Wheel

Finish: black, high-shine

Wheel size: 8.5 J x 20 ET 56 | Tire size: 275/50 R20

| Also shown on title |



20" 2-Tone 5-Spoke Wheel

Finish: black, high-shine

Wheel size: 8.5 J x 20 ET 56 | Tire size: 275/50 R20

Accessory wheels are only for specified tire sizes and may require use of wheel bolts other than those originally supplied with your vehicle. Failure to use proper equipment could result in an accident or vehicle damage.

See your authorized Mercedes-Benz dealer for details and installation.

Not compatible with snow chains. Serious wheel and tire damage may occur if the vehicle is operated on rough or damaged road surfaces or upon encountering road debris or obstacles.



| 1 |

| 2 |

| 3 |

| 4 |

Wheel Hub Inserts

Add an attractive finishing touch to your wheels with these inserts. Various styles available:

- 1 | Sterling silver with chrome Three-Pointed Star
- 2 | Classic Star & Laurel design in blue
- 3 | Classic Star & Laurel design in black
- 4 | Titanium silver with chrome Three-Pointed Star



Tire Valve Stem Caps

A perfect finishing touch, these chrome-plated valve stem caps dress-up any wheel. Available in black, silver or AMG.

| Comes in a set of four |



Wheel Locks

Wheel locks can provide a subtle yet effective security touch to your GL-Class, helping to protect your light-alloy wheels and tires from theft. One set secures four wheels. Includes coded key.

Light-Alloy Wheels

20" 2-Tone
5-Double-Spoke Wheel
Finish: black, high-sheen
Wheel size: 8.5 J x 20 ET 56
Tire size: 275/50 R20

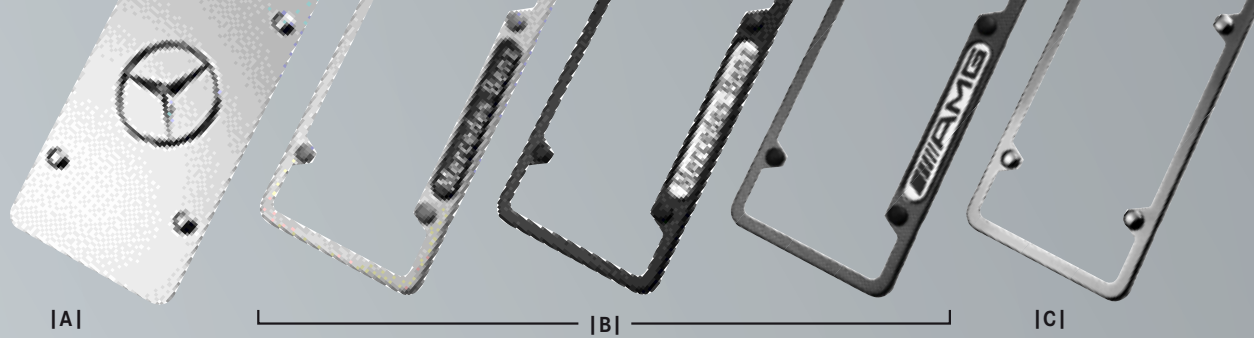
APPEARANCE



1 | Trunk Handle

Made of stainless steel in polished or satin finish, this handle attaches to the license plate and trunk lid to help prevent fingerprints and reduce the possibility of scratching the finish on your GL-Class.

Also available with Mercedes-Benz laser-etching. | Not shown |



2 | License Plate Frames

Choose from several quality stainless steel designs in an assortment of durable finishes to enhance the appearance of your license plates without blocking registration tags. Design styles include: Mercedes-Benz frame, Slimline frame, AMG Logo frame, and Star Marque solid plate. Please see INDEX for finish options for each design.

From the left to the right

- A | **Marque Plate** with star logo
- B | **Nameplate Frames** Mercedes-Benz (Polished, Black Powder Coat) and AMG (Carbon Fiber)
- C | **Slimline Frame** (Black Pearl)

Chrome Hood Fins

High-shine chromed.
| Comes in a set of six |

Illuminated Door Sills

Light-up your GL-Class in eye-catching style each time you open the door with these luminous blue-colored “Mercedes-Benz” stainless steel door sills.



Wood/Leather Steering Wheel

burl walnut | black

The wood/leather steering wheels are also available in other colors to match the interior.



Exterior Appearance
Interior Appearance

Chrome Door Handle Inserts

Help protect your finish from scratches and add a touch of style with a set of four chrome door handle inserts.

20" 5-Spoke Wheel

Finish: sterling silver

Wheel size: 8.5 J x 20 ET 56

Tire size: 275/50 R20

Side Running Boards

Add a touch of form and function to your GL-Class with our stainless steel running boards. Step surface has a brushed metal appearance dotted with rubber grips which helps prevent slippage.

Not for GL 550/AMG models.

Illumination Kit for Side Running Board

Add a sense of style as well as safety to your GL with this eye-catching Illumination Kit for your Side Running Boards. Comes in a set of two with four LED spots per side. | Side Running Boards sold separately |

APPEARANCE



MERCEDES-BENZ NAVIGATION MAP UPDATE

More than a Map.™

Navigation Map Update

The Mercedes-Benz COMAND Navigation System¹ is a fully integrated system that combines Global Positioning System (GPS) technology with electronic mapping software to help you to plan trips, navigate detours and avoid getting lost. Global Positioning System (GPS) satellites continuously track your vehicle's location and the system relies on mapping information in order to give you the most accurate and efficient routes.

Notice however, how quickly the surroundings change: roads are added or diverted, restaurants open and close, hotels and hospitals are built, ATMs move. In fact, as much as 20 percent of the navigation data the system relies on changes every year. That is why Mercedes-Benz offers reliable, and updated navigation data to help get you where you need to go effortlessly. The Navigation Map Updates are available for purchase from your authorized Mercedes-Benz dealer.

The system can route you through more than 6.1 million miles of navigable roads in the United States and Canada. Just enter the address on the intelligent destination input screen, and the system takes over, guiding you audibly and with a clear and detailed 7" LCD map display. Do you need an idea where to go? The Navigation System also offers 1.7 million Points of Interest in 40 categories including ATMs, restaurants, hotels, airports, museums and more.



¹Navigation system data includes the United States, Canada, Puerto Rico, Hawaii and Virgin Islands. Directional assistance provided only when GPS coverage is available. Maps do not cover all areas nor all routes within an area. While the navigation system provides directional assistance, the driver must remain focused on safe driving behavior, including paying attention to traffic and street signs. The driver should utilize the system's audio cues while driving and should only consult the map or verbal displays once the vehicle has been stopped in a safe place. See your authorized Mercedes-Benz dealer for availability and details.

Rear-Seat Entertainment System²

Who's riding in your back seat? Your kids' favorite superhero, a dashing leading man, or maybe it's your favorite comedienne? With the Mercedes-Benz Rear-Seat Entertainment System, you can bring along your favorite DVDs and your back seat becomes your own personal movie theater. Your passengers are entertained and because DVD audio plays over wireless headsets, the driver can concentrate on driving with fewer distractions.

The Mercedes-Benz Entertainment System includes:

- ▶ Two high-resolution 8" LCD color display monitors that are conveniently mounted behind the headrests
- ▶ Two high-quality wireless headsets for tangle-free operation and easy storage
- ▶ One remote control that can operate both monitors
- ▶ 3 Auxiliary jack enables the use of gaming devices (gaming hardware not included)
- ▶ COMAND DVD player and other sources (Media Interface, Satellite Radio, Radio, CD/DVD) can be selected from each screen separately



MEDIA INTEGRATION

Your music. Your Mercedes-Benz.

Taking your personal music collection with you wherever you go has never been easier. Mercedes-Benz now offers seamless integration of your iPod®/iPhone®³ into the audio system of your GL-Class. With an interface that is compatible with any dock-connector – equipped iPod/iPhone device, your iPod/iPhone charges while connected. Steering wheel controls and a visual display of the track information make your iPod/iPhone a perfect fit with your Mercedes-Benz.



² If factory pre-wiring (Code 866) is present.

³ iPod and iPhone are registered products of Apple Computer. All iPod and iPhone devices are sold separately. iPod Integration Kit also charges iPod/iPhone devices which support USB charging only (e.g. iPhone 3G).

⁴ Factory option.

Media Interface

The Media Interface⁴ allows you to connect your audio devices to the universal interface located in the vehicle's glovebox. The Media Interface comes standard with two cables, an iPod connector and a universal AUX input connector⁵. A non iPod USB cable is available at your Mercedes-Benz dealer which will connect select⁶ USB sticks or media players with a USB port.

The audio output can be selected and controlled through the existing audio system in your vehicle⁵. The current status of your audio device will also be displayed in the vehicle instrument cluster allowing you to keep your attention on the road.

⁵ Control of devices connected via AUX is limited to volume control.

⁶ For a list of compatible devices please visit <http://www.mbusa-mobile.com>

⁷ The iPod Integration Kit is compatible with the following iPod/iPhone devices (sold separately): iPod Generation 4 (40GB), 5 and 6, iPod photo, iPod U2 Generation 5, iPod nano Generation 3 and 4, iPod touch Generation 1 and 2, iPhone Generation 1, 3G and 3G S. The iPod Integration Kit does not support telephone functionality of the iPhone.

⁸ Available with COMAND only.

SD memory card⁸

The COMAND APS in your GL-Class features a slot for SD memory cards. Use the SD memory card as a convenient way to play music.



Mercedes-Benz iPod Integration Kit⁷

The Mercedes-Benz iPod Integration Kit puts the control at your fingertips while playing your favorite music directly from your iPod or iPhone. Additionally your iPod will charge while it's playing. As with the Media Interface, the iPod integration connector is located in the glove compartment, and is compatible with most iPod models⁷.

Comfortably control your iPod by using your steering wheel buttons:

- [A] Navigate within the iPod music menu
- [B] Access the Main Menu and control the volume
- [C] View the artist and title information displayed in the vehicle's instrument cluster

*Navigation Map Update
Rear-Seat
Entertainment System
Media Integration*

ENTERTAINMENT
& COMMUNICATION



Hitch-Mounted Bicycle Rack

This bicycle rack includes numerous updated design features to keep one or two bikes secure without causing damage to your GL-Class. One innovative feature allows secured bicycles to pivot for cargo area access. Requires Trailer Hitch (sold separately).

Hitch-Mounted Bicycle Rack Extension Kit

Allows a third bicycle to be mounted to the pre-existing Mercedes-Benz bicycle rack. | Not shown |

Bicycle Rack

This rack securely holds a single bicycle and attaches to the Roof Rack Basic Carrier (sold separately). Up to three bicycle racks may be supported on the Roof Rack Basic Carrier. Bicycles may be mounted to the rack before affixing to the carrier. Spiral Lock set available (sold separately).



| LARGE |

**Luggage Set for Roof Cargo Container**

This set of four sporty and functional bags is designed to fit inside our Small or Large Roof Cargo Containers (sold separately). Made from durable, weather-resistant materials. Shoulder straps included.



| SMALL |

| MEDIUM |

Roof Cargo Containers

Create additional space for sports equipment and luggage with one of our aerodynamic, high-quality roof containers designed to nicely complement your GL-Class. Constructed of lightweight, yet exceptionally durable, impact-tested thermoplastic material. Features pressurized struts for easy lid operation and a security lock. Comes in silver finish.

Small model holds 11.5 cubic feet. Medium model holds 14 cubic feet. Large model holds 16 cubic feet. All models have a maximum load capacity of 110 lbs. Requires Roof Rack Basic Carrier (sold separately).

UTILITY & CARE

Roof Rack Basic Carrier

Our basic carrier is an essential component for attaching a wide assortment of items to the top of your GL-Class. After easy installation, you can securely attach and lock bicycles, ski and snowboard racks, or a cargo container.

| Racks and containers sold separately |

Ski & Snowboard Rack, Deluxe

This rack holds up to six pairs of skis or four snowboards and features a pull-out function that makes it easier for loading and unloading without the need to reach across the roof of the car. Requires Roof Rack Basic Carrier. | Sold separately |

Ski & Snowboard Rack, Standard

This rack is made to tote up to four pairs of skis or two snowboards atop your GL-Class. Requires Roof Rack Basic Carrier (sold separately) which can accommodate two Ski & Snowboard Racks.

| Not shown |



Crossbars

Robust yet attractive: the new crossbars offer a secure hold for the New Alustyle ski and snowboard rack⁹ and the Mercedes-Benz roof boxes. And even when unladen they accentuate the individual, sporty look of your GL-Class. The crossbars are available in black or with a high-sheen chromed finish to match your roof rails.

⁹ Ski and snowboard rack "Deluxe" in conjunction with adapter B6 687 0115.
No adapter required for ski and snowboard rack "Standard".

**UVS-100™ Sunshade**

Think of it as SPF 100 for your dashboard. Helps prevent sun damage to the interior while keeping the inside cooler. Practical and durable. Made of reflective fabric laminated to a foam core.

**Mud Flaps**

Designed to match the contours of the GL-Class, these durable formed black plastic mud flaps will help protect your vehicle and followers from some loose road debris, rocks and the corrosive effects of salty road spray. | Available in pairs for the front and the rear. Front Mud Flaps cannot be fitted with Side Running Board and AMG cladding. |

**Car Cover**

This UV-resistant 3-layer cover helps protect the finish of your GL-Class from the elements. Made from breathable Noah® fabric, it combines an excellent fit with durable construction. | Lock and cable available separately |

UTILITY & CARE



Reversible Cargo Mat

This non-slip mat pulls double duty to protect the interior carpet of your GL-Class with a smooth, grippy side and a soft fabric side. Fabric side available in black. Easily converts to one of two configurations. Constructed of highly durable 100 % polyester.



A | Collapsible Shopping Crate

Make your next trip to the market more convenient with this collapsible shopping crate. To save space, it folds flat when not in use. Dimensions folded: 2" x 13" x 18".



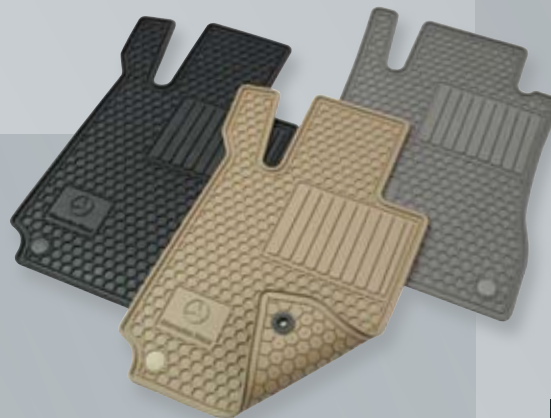
Cargo Net, Floor

Versatile and convenient, strong and durable nylon nets help you to secure objects in the back of your GL-Class.



All-Weather Floor Liners

Designed specifically to match the precise contours of the floor of your GL-Class, these quality flexible plastic floor liners feature high sides to contain dirt and liquids for the best possible carpet protection. Set includes four tailored floor liners. Available in black, grey and beige.



All-Season Floor Mats

Rugged and durable, these Honeycomb-Style Mats are custom-designed to provide the ultimate protection for your vehicle interior. Built from hard-wearing rubber, their robust construction provides the ideal combination of style and functionality. Available in black, grey and beige.

Partition Net

Separates the load compartment from the passenger compartment.



Anti-Slip Mat

Reduces slipping of the items placed in the trunk. Tailored to precise fit dimensions of the cargo area. Made of oil resistant polyester.

Cargo Area Tray & Cargo Box

Protect the cargo area of your GL-Class with this large tray with 2" sides. Formed from durable, easy-to-clean plastic to fit your vehicle. Use up to two optional cargo boxes to support and keep in place tall objects, such as grocery bags. Cargo box sold separately.



UTILITY & CARE



**BabySafe Plus Infant Seat
(up to 29 lbs.)**

Deep, molded rear-facing seat design provides extra protection and padding designed to help protect very young children up to 29 lbs. or 31 in. long. Features integrated head support, adjustable sun/wind canopy, comfortable 3-position carry handle, and variable recline angle adjustment. Light grey fabric cover is removable for washing. Can be used in the vehicle with or without the base. Approved for use in commercial aircraft. Weighs less than 8 lbs. This seat is LATCH¹⁰ and BabySmart¹⁰ compatible with provided LATCH belt¹⁰.



**DUO Plus Toddler Seat
(20-40 lbs.)**

Designed to afford excellent protection for children approximately 1 to 4 years of age. Features include single-handed adjustment to change from the upright position to the reclined and sleeping positions, height-adjustable shoulder belt, back area ventilation channels, and an additional tether for securing the head section. Fabric cover is removable for washing. This seat is LATCH¹⁰ and BabySmart¹⁰ compatible.



**KID Booster Seat
(40-79 lbs.)**

Any child who has outgrown the Toddler seat should be properly secured in a booster seat until he or she is at least 57" tall. KID Booster seat features a height and angle-adjustable backrest and headrests that can be positioned for comfort. Integrated belt guides on the sides help to keep the lap belt from sliding over the child's abdomen where it could cause injury in an accident. Fabric cover is removable for washing. This seat is BabySmart¹⁰ compatible.



¹⁰ *Please consult your owner's manual or dealer for proper installation of your child seat.*

BabySmart/OCS Safety Information: Most Mercedes-Benz vehicles from MY 1998 through 2003, select models from 2004 through 2006, and current G-Class vehicles are equipped with BabySmart™. Mercedes-Benz vehicles equipped with BabySmart™ have a device that recognizes the presence of BabySmart™-equipped child seat when properly installed in the front passenger seat and deactivates the passenger front air bag (check your vehicle's Operator's Manual or labels located on the sides of your dashboard to verify).

All current Mercedes-Benz models are equipped with the Occupant Classification System (OCS) (with exception of the G-Class) which is designed to turn off the front passenger's front airbag when the system senses the weight of a typical child 12 months old or less plus the weight of a standard child restraint. See vehicle's operators manual for important additional information on this system and further information regarding the transportation of children heavier than a typical 12 month old.

All Mercedes-Benz child safety seats meet or exceed U.S. Department of Transportation standards. They are also suitable for use in older vehicles that do not have integrated LATCH (Lower Anchors and Tethers for Children) attachment points. Visit the National Highway Traffic Safety Administration's website at <http://www.NHTSA.gov> for additional information about child safety seat laws and proper use.



Coat Hanger

Robust coat hanger made from chromed metal and plastic. Easy to attach to front head rests. The ideal way to transport clothing without creasing them. For safety, please remove when not in use.

Not in conjunction with factory option Rear-Seat Entertainment System (code 864).

Battery Trickle Charger

For those extended periods when your GL-Class will not be used, this charging device will help ensure that your battery is fully energized when you need it.



A | Leather Chamois

Soft, pliable and absorbent leather to gently wipe away water without leaving streaks or water marks on your GL-Class.

B | Sheepskin Wash Mitt

Thick, 100% Merino wool pile helps apply car shampoo, capture dirt and grime, and reduce paint surface scratches. Large shape and elasticized wrist comfortably accommodate all hand sizes.



Exterior Car Care Kit

Clean and protect your Mercedes-Benz with the superior, specially formulated products in our exclusive Exterior Car Care Kit. Includes Car Shampoo, Light-Alloy Wheel Cleaner with brush, Car Sponge and a Car Care Cloth, all neatly packed into a Mercedes-Benz Leisure Bag.



Interior Car Care Kit

Keep the interior of your Mercedes-Benz looking its best with the superior, specially formulated products in our exclusive Interior Car Care Kit. Includes Cabin Care Spray, Glass Cleaner, Auto Glass Sponge and a Car Care Cloth, all neatly packed into a Mercedes-Benz Leisure Bag.

*Child Safety Seats
Car Care*

UTILITY & CARE

APPEARANCE

Item	P.	Part no.
Chrome Door Handle Inserts (Set of 4)	07	B6 688 1237
Chrome Hood Fins	06	B6 688 1302
High-Sheen Chromed Exterior Mirror Cover	04	B6 688 1303
Illuminated Door Sills, Front (Beige Trim, Set of 2)	06	B6 689 0142
Illuminated Door Sills, Front (Black Trim, Set of 2)	06	B6 689 0141
Illuminated Door Sills, Front (Grey Trim, Set of 2)	06	B6 689 0143
Illumination Kit for Side Running Board	07	B6 688 0947
License Plate Frames		
AMG Frame (Black pearl coat stainless steel)	06	BQ 688 0091
AMG Frame (Carbon fiber faux stainless steel)	06	BQ 688 0099
AMG Frame (Polished stainless steel)	06	BQ 688 0087
Marque Plate with Star logo (Black powder coat stainless steel)	06	BQ 688 0059
Marque Plate with Star logo (Polished stainless steel)	06	BQ 688 0058
Mercedes-Benz Frame (Black pearl stainless steel)	06	BQ 688 0090
Mercedes-Benz Frame (Black powder coat stainless steel)	06	BQ 688 0088
Mercedes-Benz Frame (Polished stainless steel)	06	BQ 688 0086
Mercedes-Benz Frame (Satin stainless steel)	06	BQ 688 0100
Slimline Frame (Black pearl stainless steel)	06	BQ 688 0092
Slimline Frame (Black powder coat stainless steel)	06	BQ 688 0007
Slimline Frame (Polished stainless steel)	06	BQ 688 0005
Slimline Frame (Satin stainless steel)	06	BQ 688 0101
Slimline Frame (Stainless steel)	06	BQ 688 0103
Light-Alloy Wheels		
20" 5-Spoke Wheel (sterling silver) Wheel Size: 8.5 J x 20 ET 56, Tire Size: 275/50 R20	07	B6 647 4210
20" 2-Tone 5-Spoke Wheel (black, high-sheen) Wheel Size: 8.5 J x 20 ET 56, Tire Size: 275/50 R20	04	B6 647 4570
20" 2-Tone 5-Double-Spoke Wheel (black, high-sheen) Wheel Size: 8.5 J x 20 ET 56, Tire Size: 275/45 R20	05	B6 647 4566
20" 2-Tone 10-Spoke Wheel (black, high-sheen) Wheel Size: 8.5 J x 20 ET 56, Tire Size: 275/50 R20	04	B6 647 4528

ENTERTAINMENT & COMMUNICATION

Item	P.	Part no.
iPod® Integration Kit (for vehicles with Sound System)	09	B6 782 4503
iPod® Integration Kit (for vehicles without Sound System)	09	B6 782 4502
iPod® Integration Kit Video	-	B6 782 4563
Media Interface USB Cable	09	B6 782 4528
Navigation Map Update	08	see dealer
Rear-Seat Entertainment System	08	B6 782 7001
Rear-Seat Entertainment System Display Brackets (2x)	08	A164 910 0801
Rear-Seat Entertainment System DVD Bracket (Beige) (1x)	08	B6 782 7006
Rear-Seat Entertainment System DVD Bracket (Black) (1x)	08	B6 782 7005
Rear-Seat Entertainment System DVD Bracket (Grey) (1x)	08	B6 782 7007
SD memory card	09	B6 782 3973

APPEARANCE	P.	Part no.
Side Running Boards	07	B6 688 0630
Tire Valve Stem Caps (AMG)	04	BQ 640 8127
Tire Valve Stem Caps (Black)	04	BQ 640 8126
Tire Valve Stem Caps (Silver)	04	BQ 640 8128
Trunk Handle (Polished stainless steel)	06	BQ 675 0004
Trunk Handle (Satin stainless steel)	06	BQ 675 0034
Trunk Handle – with Mercedes-Benz laser-etching (Polished Stainless Steel)	06	BQ 675 0035
Trunk Handle – with Mercedes-Benz laser-etching (Satin Stainless Steel)	06	BQ 675 0036
Wheel Hub Insert (Classic Star & Laurel design in black)	04	B6 647 0201
Wheel Hub Insert (Classic Star & Laurel design in blue)	04	B6 647 0210
Wheel Hub Insert (Sterling silver with chrome Three-Pointed Star)	04	B6 647 0206
Wheel Hub Insert (Titanium silver with chrome Three-Pointed Star)	04	B6 647 0203
Wheel Locks	04	B6 647 0156
Wood/Leather Steering Wheel (burl walnut grey)	06	B6 626 8333
Wood/Leather Steering Wheel (burl walnut black)	06	B6 626 8335
Wood/Leather Steering Wheel (burl walnut beige)	06	B6 626 8334

UTILITY & CARE

Item	P.	Part no.
All-Season Floor Mats (Beige)	14	BQ 668 0687
All-Season Floor Mats (Black)	14	BQ 668 0686
All-Season Floor Mats (Grey)	14	BQ 668 0688
All-Weather Floor Liners (Beige, Set of 4)	14	BQ 674 0011
All-Weather Floor Liners (Black, Set of 4)	14	BQ 674 0009
All-Weather Floor Liners (Grey, Set of 4)	14	BQ 674 0010
Anti-Slip Mat	15	B6 768 0071
Battery Trickle Charger	17	B6 754 2029
Bicycle Rack	11	A000 890 0293
Car Cover	13	BQ 660 0081
Cargo Area Tray	15	B6 664 0060
Cargo Box	15	B6 664 0002
Cargo Net, Floor	14	B6 766 0098
Child Safety Seat BabySafe Plus Infant (up to 29 lbs.)	16	B6 686 8214
Child Safety Seat DUO Plus Toddler (20 - 40 lbs.)	16	B6 686 8219
Child Safety Seat KID Booster (40 - 79 lbs.)	16	B6 686 8310
Coat Hanger	17	A000 814 0132
Collapsible Shopping Crate	14	B6 647 0995
Crossbar (Black, Set of 2)	12	B6 781 2128
Crossbar (Chrome, Set of 2)	12	B6 781 2129
Exterior Car Care Kit	17	A211 986 0100
Flexible Cargo Stabilizer	14	A001 987 1414
Hitch-Mounted Bicycle Rack	10	B6 685 1110
Hitch-Mounted Bicycle Rack Extension Kit	10	B6 685 1112
Interior Car Care Kit	17	A211 986 0000
Leather Chamois	17	BQ 600 0010
Luggage Set for Roof Cargo Container (Small)	11	A000 890 0411
Luggage Set for Roof Cargo Container (Large)	11	A000 890 0511
Mud Flaps, Front (Black, Set of 2)	13	B6 652 8242
Mud Flaps, Rear (Black, Set of 2)	13	B6 652 8237
Partition Net	14	B6 766 0114
Reversible Cargo Mat (Black)	14	B6 768 0067

Item	P.	Part no.
Roof Cargo Container (Small)	11	A000 840 1562
Roof Cargo Container (Medium)	11	A000 840 1662
Roof Cargo Container (Large)	11	A000 840 1862
Roof Rack Basic Carrier	12	B6 781 2141
Sheepskin Wash Mitt	17	BQ 600 0005
Ski & Snowboard Rack (Deluxe)	12	B6 685 1703
Ski & Snowboard Rack (Standard)	12	B6 685 1702
Spiral Lock for Bicycle Rack	11	B6 685 1712
UVS-100™ Sunshade	13	BQ 667 0030

Mercedes-Benz USA, LLC
One Mercedes Drive
Montvale, NJ 07645
1-800-FOR-MERCEDES
MBUSA.com

© 2009 Mercedes-Benz USA, LLC
A Daimler Company

All illustrations and specifications contained in this brochure are based on the latest product information available at the time of publication. Actual product offerings may vary from those shown or may be subject to availability delays or discontinuance. Mercedes-Benz reserves the right to make changes at any time, without notice, in colors, materials, equipment, specifications and models. Any variations in colors shown are due to reproduction variations of the printing process. Illustrations may include test situations. Some vehicles may be shown with non-U.S. equipment. Vehicles are shown with optional equipment.

Unsecured cargo can become hazardous in a collision. Always secure cargo using the floor-mounted tie-down hooks. Cargo nets and organizers are not intended to prevent objects of excessive weight and bulk from sliding or rolling in the event of a collision or sudden stop. Always drive with caution when driving with cargo.

Certain accessories may require professional installation and/or additional components to complete the installation in your vehicle. Please consult your authorized Mercedes-Benz dealer for specific information about automotive accessories. Speak with a representative at your local authorized Mercedes-Benz dealership for current pricing on Genuine Mercedes-Benz Accessories. Visit accessories.mbusa.com to shop online or call 1-800-FOR-MERCEDES to obtain the Lifestyle Collection catalog.