





2016 S - CLASS  
COUPE



S



Mercedes-Benz



# ANTIDOTE FOR ENVY

---

*FROM INNOVATION TO INSPIRATION, THE S-CLASS COUPE STARTS BY GOING BEYOND IMAGINATION, AND ENDS UP BEYOND COMPARE.*

---





## TO INSPIRE ALL OTHERS TO ASPIRE

You know that feeling when you sit in traffic, staring at the driver of another car, and wish you could trade places for just one day? The driver of a 2016 S-Class Coupe doesn't. Because whether it's breathtaking performance, inimitable style, never-before-seen technologies, or must-have luxuries, there's likely no other car so impervious to driver's remorse. And that's without adding "in combination" to the list above. An S-Class exercises its industry leadership in virtually every arena individually—from driving assists that foresee the future, to craftsmanship that honors a legacy.





# *BRILLIANT SEDUCTION*

---

*ITS SHAPE IS BEGUILING. ITS DETAILS CAPTIVATE. BUT  
TO BE SO IRRESISTIBLY ENCHANTING? THAT'S STYLE.*

---





## UNINHIBITED BY TRADITION, BY DESIGN

Something happens when you create a car for a limited audience: It's unshackled from the burdens of convention. In the S-Class Coupe, the result is a tradition of continually advancing the avant-garde. Its pillarless profile lets no framework interrupt its side windows, nor the flowing muscle of its flanks. Trim is rendered in sweeps of satin chrome. Its LED headlamps can be highlighted by 94 Swarovski® crystals. And its cabin envelops ultramodern luxuries in a three-dimensional sculpture of leather and wood.



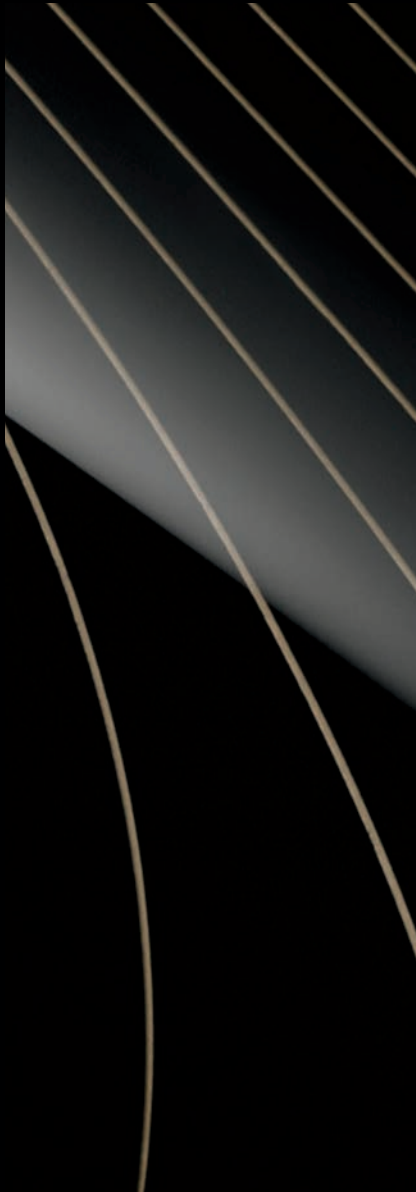


# *FITNESS AND FINESSE*

---

*STITCHES AND PERFORATIONS DANCE FLAWLESSLY  
ACROSS NAPPA LEATHER. GLOWING WOOD WRAPS  
INTO EACH DOOR. AND A CASCADING CONSOLE  
DEFINES FOUR INDIVIDUAL HAVENS OF COMFORT.*

---







## STAR TREATMENT

The S-Class Coupe cabin pairs two deeply held traditions: innovation you've likely never imagined, and handcraftsmanship most other automakers long ago forgot. Active multicontour front seats can instantly add side support as the car takes corners. There's not a single lightbulb in the car, yet a network of more than 300 LEDs elevates cabin ambience to new dimensions—with seven colors, multiple zones, and variable brightness. The Panorama roof brings the sun and stars to all four of the individually contoured seats. And at a button's touch, the available MAGIC SKY CONTROL® can darken the glass electrically.

## SPA TREATMENT

While touching any surface of the S-Class cabin is uniquely rewarding, the thoughtful amenities beneath it all can touch you deeply. Front seats can offer six massage programs, from stress-reducing to rejuvenating. Two of them feature a "hot stone" effect that might make driving to the spa more enjoyable than the spa itself. All four seats, the steering wheel, and the three front armrests can be heated. Nappa leather is fitted by hand and offered in a wide palette, with exquisite *designo* leather at its pinnacle. Three-dimensional sculptures of hand-finished wood flow throughout the cabin. Six varieties range from traditional to exotic, all responsibly forested. And beneath the cabin's surfaces, steam-expanded foams—a process pioneered by the S-Class—eliminate harmful chemicals, while products from flax, coconut and olives sustainably support numerous cabin elements.



# *AIR AND AUTHORITY*

---

*FEELS LIKE A BILLET, FLIES LIKE A BULLET. TURNS PRESSURIZED AIR  
INTO EFFORTLESS POISE, AND EVERY ATOM OF FUEL INTO FIREWORKS.*

---





## PHYSICS, CHEMISTRY AND MAGIC

When a solid mass changes directly into a vapor, chemists call it sublimation. What an S-Class Coupe can create with its vault-solid body and chassis is far from vaporware—but it surely feels sublime. Twin turbos, Direct Injection and multispark ignition turn molecules and milliseconds into massive torque. Adaptive, active and even proactive suspensions read the road by feel and by sight. And two versions of 4MATIC® all-wheel drive can turn traction into attraction. What kind of science makes driving an S-Class Coupe so magical? The moment you feel the chemistry, you'll know.

# *HANDCRAFTED BY RACERS*

---

*MERCEDES-AMG IS NO MERE SPONSOR OF RACING. AMG IS PEOPLE WHO DEVELOP, CRAFT AND DRIVE RACECARS. ON THE TRACK, THEY BRING HOME TROPHIES. ON THE STREET, YOU GET TO DRIVE THE TROPHY HOME.*





“One man, one engine” is more than a motto for AMG. It’s a guiding philosophy and a process rooted in racing, where precision and endurance are proven in record time. The heart of a Mercedes-AMG S 63 or S 65 is its biturbo engine. Each one is crafted by the hands of its own master engine builder, who visually inspects and records every component, and computer-verifies each torque spec. Only after the engine is individually bench-tested does it earn his signature—on a metal plaque that he affixes atop its cover. This degree of detail-obsession is evident throughout the car—from its mighty brake hardware to its range of driver-selected modes to its finely stitched, hand-fitted Nappa leather upholstery.

The AMG S 63’s biturbo V-8 outputs 577 hp. Its 664 lb-ft of torque is deftly applied via AMG Performance 4MATIC® all-wheel drive. Developed to maximize launch force while advancing AMG’s legendary agility, the system continually sends 67% of the total torque to the rear wheels. It teams with a lightning-quick 7-speed multiclutch AMG SPEEDSHIFT® transmission and AMG Adaptive Sport Suspension to deliver 60 mph in 3.9 seconds.<sup>1</sup> The front apron’s black “flics” and matte silver accents lure the eye and the wind to the chiseled profile—where massive AMG brakes lurk behind 20" AMG® wheels.<sup>2</sup> And from its AMG-lavished cockpit, the driver reigns supreme amid racing-bred controls and refined furnishings.



**AMG**

DRIVING PERFORMANCE

# *POLISHED TO PERFECTIONISM*

---

*INHERENT IN THE NAME MERCEDES-AMG IS MORE THAN A DUAL HERITAGE. IT'S AN EXPONENTIALLY MULTIPLIED PASSION FOR PERFORMANCE. AND IT'S HOW A FLAGSHIP LUXURY COUPE CAN ALSO FLY UNDER A CHECKERED FLAG.*





There are many easy ways to increase a car's performance on paper, and even on a track. Upgrade a few components, chop a little weight, or just make it an all-out power monster. None of that would fly in Affalterbach, Germany. That's where a Mercedes-AMG is created from the racetrack up, not just to outrun but to outperform by every measure. From super-hard cylinder walls to high-speed software, countless details don't just quicken response, they sharpen it. Weight is not only reduced—by using a lithium-ion battery, for example—but reapportioned for better balance. And the elements for reining in speed are power-matched to those that generate it. Massive brake calipers clench enormous high-performance

steel or AMG Carbon Ceramic discs—both types ventilated, perforated and slotted to better shed heat and resist fade. The AMG S 65's 621-hp biturbo V-12 transmits 738 lb-ft of torque to its rear wheels via a 7-speed AMG SPEEDSHIFT® PLUS transmission. In 4.0 seconds,<sup>1</sup> it can thrust the coupe to 60 mph—just enough for onlookers to take in its brilliant chrome or gloss black detailing, or size up its 20" forged and polished AMG® wheels.<sup>2</sup> Those fortunate enough to enjoy the S 65 from its lavish cockpit can also experience its dramatic curve tilting function. Using the cameras of MAGIC BODY CONTROL,<sup>3</sup> it can see upcoming curves and actively lean into them—like a cyclist or slalom skier—for added control.



**AMG**

DRIVING PERFORMANCE







# SAFETY FIRST AND FOR ALL

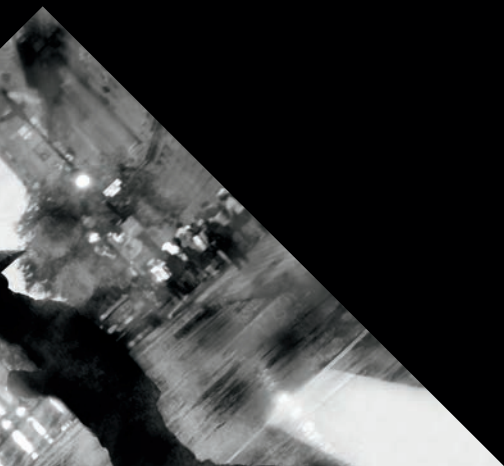
---

*WHEN SECONDS MATTER MOST, SO DO FIRSTS. IT'S WHY MERCEDES-BENZ ENGINEERS KEEP THINKING UP NEW WAYS TO MAKE EVERY CAR SAFER.*

---

Every effort of Mercedes-Benz safety engineers goes toward a singular goal: accident-free driving. They're also keenly aware that achieving this goal only for the vehicles they design would be pointless. The roads can only be safe for someone when they're safe for everyone. The 1951 patent for the first crumple zone is one of more than 88,000 that Mercedes-Benz has earned in the past 130 years. Energy-absorbing front and rear deformation zones flank a reinforced "safety cell" for the passengers. But the idea did more than better protect the occupants of a Mercedes-Benz. It eventually became the way all automobiles are made, thereby helping protect everyone on the road better. Over the decades, countless breakthroughs that were

pioneered under the Three-Pointed Star have gone on to become the safety standards for all automobiles—like the Antilock Braking System (ABS), the Electronic Stability Program (ESP®), emergency-sensing Brake Assist (BAS®), the seat-belt Emergency Tensioning Device (ETD), and side curtain air bags. For many of these inventions, Mercedes-Benz has chosen not to enforce their patents—since some things are too important not to share. As a result, you can expect to see some of the groundbreaking advancements of today's Mercedes-Benz on other cars in a few years. That said, sometimes the future is only milliseconds ahead of you. And nobody prepares you for it like the engineers who've spent decades thinking about it.



### **COLLISION PREVENTION ASSIST PLUS**

Radar-based technology alerts you if you're following a vehicle too quickly or too closely. As soon as you start to brake, Adaptive Brake Assist automatically adjusts the braking to an ideal level, to help prevent a collision or reduce its severity. The system can apply the brakes autonomously from speeds up to 65 mph. It can also activate PRE-SAFE,<sup>®</sup> the predictive system that can tighten the front seat belts and close the windows in the moments before a collision.<sup>3</sup>

### **ATTENTION ASSIST**

By continuously monitoring as many as 70 parameters of driving behavior, ATTENTION ASSIST<sup>®</sup> can alert you both visually and audibly if it detects signs of driver-drowsiness on long trips. Its enhanced sensitivity helps the system detect drivers who begin their trip drowsy. A display in the gauge cluster can help you track your own attention level and driving time along your journey.<sup>4</sup>

### **ACTIVE LANE KEEPING ASSIST**

By monitoring visible road markings at speeds above 37 mph, Active Lane Keeping Assist helps detect unintended drifting off-course, and alerts you by vibrating the steering wheel. If you continue to drift, it can selectively brake individual wheels to help guide the car back into its lane. It can also help detect and alert you to overtaking vehicles, vehicles you'll need to overtake if you change lanes, and even oncoming traffic in the adjacent lane.<sup>4</sup>

### **ACTIVE BLIND SPOT ASSIST**

When driving above 20 mph, radar technology helps sense when a vehicle enters the blind-spot area on either side of you, and alerts you by illuminating an icon in the side mirror. A warning tone sounds if you activate a turn signal while a vehicle is detected. And if you begin to change lanes, advanced active technology can help guide the car back by applying the brakes on one side.<sup>5</sup>





#### **DISTRONIC PLUS WITH STEERING ASSIST**

Radar-based cruise control adapts your set speed to the flow of traffic ahead, automatically slowing until your path is clear again. If the vehicle ahead slows to a stop, DISTRONIC PLUS<sup>®</sup> can brake to a full halt. When traffic moves, you can resume with just a tap, or automatically if the stop is under a second. The Steering Assist feature helps the driver keep the vehicle centered in between the lane markings while cruising on straight roads, or even in gentle curves.<sup>6</sup>

#### **PRE-SAFE BRAKE WITH PEDESTRIAN RECOGNITION**


PRE-SAFE Brake can help detect an impending collision and automatically apply up to 100% braking force to help reduce the severity of impact. At speeds up to approximately 35 mph, it can also help detect if pedestrians have entered your path and automatically apply the brakes.<sup>7</sup> The features are active whether using the cruise control functions of DISTRONIC PLUS or not.

#### **BRAKE ASSIST PLUS WITH CROSS-TRAFFIC ASSIST**

BAS<sup>®</sup> PLUS uses radar sensors to scan the road ahead at driving speeds up to approximately 45 mph. Cross-Traffic Assist uses radar plus advanced cameras to help detect a potential collision with vehicles approaching from either side of an intersection ahead, or with pedestrians in the car's path. When the driver responds to the system's alert by braking, Brake Assist PLUS precisely applies the maximum braking force required to help prevent such an accident.<sup>7</sup>

#### **NIGHT VIEW ASSIST PLUS**

When driving in darkness, Night View Assist<sup>®</sup> PLUS can project invisible infrared beams and read them with a special camera. The system can display a clearer, supplemental real-time view of the road in the gauge cluster—either full-time or automatically as danger is detected. Advanced technology can also help identify pedestrians and animals along dark roads, and highlight them on the screen.<sup>8</sup>



# AHEAD AND BEYOND

---

*SEEING THE FUTURE ISN'T NEARLY AS IMPORTANT AS PREDICTING  
YOURS—ESPECIALLY THE PART JUST SECONDS AHEAD.  
WITH INTELLIGENT DRIVE, A 360° NETWORK OF CAMERAS, RADAR  
AND OTHER SENSORS CAN SEE MORE THAN THE HUMAN EYE,  
TO HELP YOU GET OUT OF DANGER BEFORE YOU'RE IN IT.*

---

# *EMBRACED AND ENRAPT*

*YOUR WELL-BEING, WELL ATTENDED. YOUR TIME, WELL SPENT.*





## A HISTORY OF INVENTING THE FUTURE

Safety and comfort are certainly hallmarks of the S-Class. But its legacy has been enriched by knowing when not to play it safe, and by never settling into contentment. Time-travel through its long line of thoroughbred coupes and you'll find daring design, exquisite details and invigorating innovations—unveiling new tomorrows, over and over. Most anything can become “classic” if enough time has passed. An S-Class makes your time feel special from day one.



## SENSE AND SENSUALITY

Though famous for their logic, Mercedes-Benz engineers have many passions. It's how they alone have kept the romance of the pillarless coupe bodystyle going strong—quite literally, too—for 55 years. And it's how the technology in the S-Class soothes and stimulates all of your senses. Dual reconfigurable 12.3" widescreens keep you in the know, via classic analog-style gauges and intuitive animated menus. A Head-Up Display is also available. A touchpad/rotary controller can read your handwriting, and bring you a world of in-car and online entertainment, information and navigation. Two surround sound systems have been custom-crafted by Burmester,<sup>®</sup> Germany's renowned maker of high-end home audio. And from the intricate speaker grilles, to the cabin-air ionizer and fragrance atomizer, to the multicolor LED ambient lighting, every detail is engineered to entice you, engage you, and enchant you.





*IT CAN DO THINGS NO CAR HAS EVER DONE FOR YOU.  
AND IT CAN MAKE THE ENTIRELY NEW FEEL NOT JUST  
COMPLETELY NATURAL, BUT UTTERLY ESSENTIAL.*

---

## *FLAWS WITH THE GO*

---



# TOGETHER WHEREVER

*IT'S PERFECTLY NATURAL TO DEVELOP AN EMOTIONAL ATTACHMENT TO YOUR MERCEDES-BENZ. WITH MBRACE, ENJOYING A TECHNOLOGICAL CONNECTION IS JUST AS EASY.*

With Mercedes-Benz mbrace<sup>®</sup>, your car is only a click away. Five years of mbrace Connect benefits and services<sup>9</sup> come standard with every new 2016 Mercedes-Benz, providing you with remote access to your vehicle from your smartphone or computer. With the mbrace Mobile App,<sup>10</sup> you can start your car's engine, lock its doors and more. You can access Google and Yelp from your car with an ever-evolving variety of in-vehicle apps. You can send destinations to your car's standard COMAND<sup>®</sup> navigation system from your computer or phone. Even your car can reach out, with remote diagnostics and a direct connection to Mercedes-Benz Roadside Assistance.<sup>11</sup> Three additional packages bring you even more connections—from added safety and security, to a personal concierge, to streaming music and in-car WiFi for you and your friends. With mbrace, your Mercedes-Benz helps you stay connected not just to your car, but to your world—from anywhere you are, and wherever tomorrow takes you.

## **mbrace Connect**

5 years included

*State-of-the-art convenience with remote vehicle access, in-vehicle apps and over-the-air updates*

### **Package includes:**

- mbrace Mobile App for Android or iPhone
- Remote Start, remote lock/unlock and more via Mobile App
- Access to mbrace Web services at [mbrace.MBUSA.com](http://mbrace.MBUSA.com)
- Remote diagnostics with direct dealer connection
- Over-the-air updates of many mbrace features and apps
- An evolving selection of Mercedes-Benz Apps, such as:
  - Google<sup>™</sup> Local Search
  - Yelp
  - Fuel station finder with prices
  - Weather reports locally and around the world
  - Airport flight status
  - Local movie theater showtimes
- Valet Protect
- Viewable traffic cams in many metro markets

## **mbrace Secure**

6-month trial included  
Requires mbrace Connect

*Added peace of mind from safety and security features for you, your family, and your vehicle*

### **Package includes:**

- Automatic Collision Notification
- Emergency calling from your car's SOS button or the Mobile App
- Automatic Alarm Notification
- Stolen vehicle location assistance
- Agent-assisted remote locking and unlocking
- Dealer connect

## **mbrace Concierge**

3-month trial included  
Requires mbrace Secure

*Personal assistance from highly knowledgeable professionals with access to a world of resources*

### **Package includes:**

- Personal concierges to help you stay more productive on the road, or from the Mobile App on your smartphone
- Expert recommendations and reservations for dining out, and for tickets to events
- Turn-by-turn directions from a live assistant or sent to your car
- Travel assistance, including reservations and changes for hotels, airlines and car rentals
- Answers to most any question, help with most any request

## **mbrace Entertain**

3-month trial included  
Requires mbrace Secure

*Online, on-the-road enjoyment from streaming entertainment to maps, along with in-car WiFi*

### **Package includes:**

- Streaming audio and data via widely available 3G coverage
- In-car WiFi with secure connection of up to four devices
- Online maps, powered by Google
- A selection of streaming audio apps, including:
  - TuneIn<sup>®</sup> radio
  - iHeartRadio<sup>®</sup> Available starting Fall 2015
  - Mercedes-Benz Radio

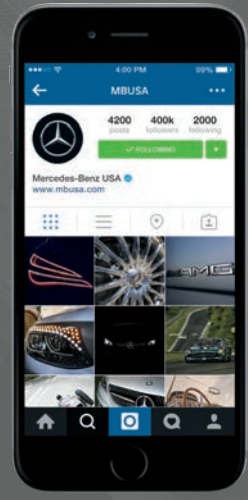
*Mercedes me* is a new online destination for Mercedes-Benz drivers, where you can access vehicle info, get more from your mbrace features, learn more about your car, and follow the exciting world of Mercedes-Benz. Take a tour at [MBUSA.com/me](http://MBUSA.com/me)





### CAR IN YOUR POCKET

The mbrace Mobile App on your iPhone or Android phone includes a number of convenient remote vehicle controls. A new Remote Start feature lets you start the engine from your smartphone, to give the climate control a head start before you even leave the house. By the time you enter your car, the cabin can be preconditioned for your comfort.



### OUR WORLD IS YOURS

The online world of Mercedes-Benz is one of many ways you can enjoy being part of the family. You can keep up to date with news and events, or take in an entertaining film. You can get more from your vehicle with helpful tutorial videos and downloadable manuals. And you can check out photos from other Mercedes-Benz drivers and fans, and best of all, share yours as well.



# BUILD YOUR OWN

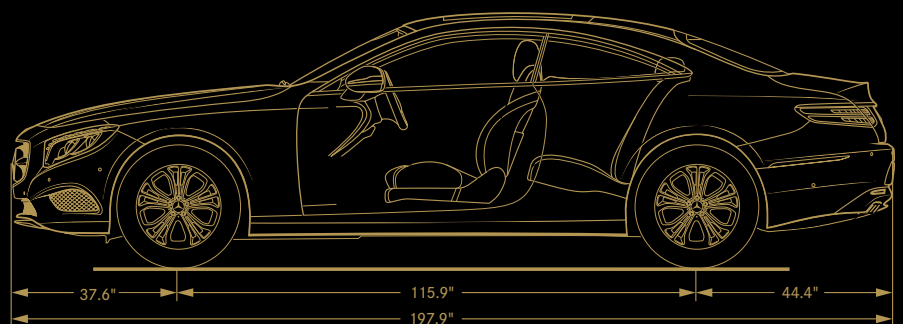
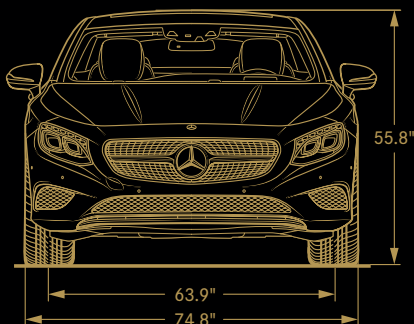
MBUSA.com/S

## Specifications

		S 550 4MATIC Coupe	AMG S 63 Coupe	AMG S 65 Coupe
<b>Engine</b>	Type	4.7-liter biturbo Direct Injection V-8	Handcrafted AMG 5.5-liter biturbo Direct Injection V-8	Handcrafted AMG 6.0-liter biturbo V-12
	Power	449 hp @ 5,250–5,500 rpm	577 hp @ 5,500 rpm	621 hp @ 4,800–5,400 rpm
	Torque	516 lb-ft @ 1,800–3,500 rpm	664 lb-ft @ 2,250–3,750 rpm	738 lb-ft @ 2,300–4,300 rpm
<b>Transmission</b>		7-speed automatic with shift paddles	7-speed AMG SPEEDSHIFT® MCT with shift paddles	7-speed AMG SPEEDSHIFT PLUS with shift paddles
<b>Acceleration, 0–60 mph<sup>1</sup></b>		4.5 sec	3.9 sec	4.0 sec
<b>Wheels</b>		Staggered-width 19" triple 5-spoke with all-season Extended Mobility tires <sup>2</sup>	Staggered-width 20" AMG® 5-spoke with high-performance tires <sup>2</sup>	Staggered-width 20" AMG forged, polished multispoke with high-performance tires <sup>2</sup>
<b>Suspension</b>		4-wheel multilink with self-leveling AIRMATIC® and Adaptive Damping	4-wheel multilink AMG Adaptive Sport Suspension with AIRMATIC and ESP® Curve Dynamic Assist	4-wheel multilink AMG Active Sport Suspension with MAGIC BODY CONTROL®, curve tilting function, and ESP Curve Dynamic Assist
<b>Drivetrain</b>		4MATIC® all-wheel drive	AMG Performance 4MATIC all-wheel drive	Rear-wheel drive

## Dimensions

	S 550 4MATIC Coupe	AMG S 63 Coupe	AMG S 65 Coupe
<b>Wheelbase</b>	115.9"	115.9"	115.9"
<b>Overall length</b>	197.9"	198.6"	198.6"
<b>Overall height</b>	55.8"	56.0"	56.0"
<b>Overall width</b>	83.0" (w/mirrors)	83.0" (w/mirrors)	83.0" (w/mirrors)
<b>Curb weight</b>	4,707 lbs	4,678 lbs	4,839 lbs
<b>Headroom (front/rear)</b>	40.0" / 39.7"	40.0" / 39.7"	40.0" / 39.7"
<b>Legroom (front/rear)</b>	41.7" / 33.4"	41.7" / 33.4"	41.7" / 33.4"
<b>Shoulder room (front/rear)</b>	57.0" / 51.4"	57.0" / 51.4"	57.0" / 51.4"
<b>Cargo capacity</b>	10.4 cu ft <sup>12</sup>	10.4 cu ft <sup>12</sup>	10.4 cu ft <sup>12</sup>





## KEY STANDARD FEATURES

S 550 4MATIC Coupe  
AMG S 63 Coupe  
AMG S 65 Coupe

### Performance and efficiency

- ● ● ECO Start/Stop system
- — — 4MATIC all-wheel drive
- ● — AMG Performance 4MATIC all-wheel drive

### Safety and security

- ● ● COLLISION PREVENTION ASSIST PLUS
- ● ● ATTENTION ASSIST®
- ● ● PRE-SAFE®
- ○ ● Night View Assist® PLUS
- ● ● Electronic Stability Program (ESP)
- ● ● Adaptive braking technology: Predictive Brake Priming, Automatic Brake Drying, Hill-Start Assist, and Brake HOLD feature
- ● ● Emergency-sensing Brake Assist (BAS®)
- ● ● Advanced Tire Pressure Monitoring System
- ● ● 12-way air bag protection
- ● ● LED Daytime Running Lamps and taillamps
- ● ● Full-LED headlamps with Active Curve Illumination
- ● ● Adaptive Highbeam Assist
- ● ● Corner-illuminating front lamps
- ○ ● DISTRONIC PLUS® with Steering Assist
- ○ ● PRE-SAFE® Brake with Pedestrian Recognition
- ○ ● BAS® PLUS with Cross-Traffic Assist
- ○ ● PRE-SAFE PLUS rear-end collision protection
- ○ ● Active Blind Spot Assist
- ○ ● Active Lane Keeping Assist
- ○ ● Traffic Sign Assist
- ● ● MAGIC VISION CONTROL® heated wiper/washer system
- ● ● PARKTRONIC with Active Parking Assist
- — — Rearview camera<sup>13</sup>
- ● ● Surround View System<sup>13</sup>
- ● ● SmartKey remote locking and starting system
- ● ● KEYLESS-GO®
- ● ● Soft-close doors
- ● ● Electronic trunk closer with HANDS-FREE ACCESS
- ● ● Antitheft alarm system with remote panic feature

S 550 4MATIC Coupe  
AMG S 63 Coupe  
AMG S 65 Coupe

### Comfort and convenience

- ● ● 16-way power front seats with memory
- ● ● Heated and ventilated front seats
- ● ● Active multicontour front seats with massage feature
- ○ ● Heated front center armrest and door armrests
- ● ● Individual rear seats with functional center console
- ○ ● Heated rear seats
- ● ● Power tilt/telescoping steering column
- ● ● Multifunction steering wheel
- ○ ● Heated steering wheel
- ● ● Multicolor/multizone LED ambient cabin lighting
- ● ● Illuminated front door sills
- ● ● Panorama roof with heat-rejecting fixed-glass panel and power interior sunshade
- ● ● Power rear-window sunshade
- ● ● Dual-zone digital automatic climate control
- ● ● Cabin-air purification system with ionizer
- ● ● Cabin-air fragrance system
- — ● *designo* Nappa leather headliner
- ● ● Rain-sensing windshield wipers
- ● ● Heated power side mirrors with power fold-in
- ● ● Auto-dimming driver-side and inside rearview mirrors

### Entertainment and navigation

- ● ● Dual 12.3" high-resolution widescreens
- ● ● COMAND® system with touchpad controller
- ● ● COMAND navigation with 80GB hard drive
- ● ● 5 years of Traffic and Weather service by SiriusXM<sup>14</sup>
- ● ● Voice control with learning feature
- ● ● No-charge navigation map updates for 3 years
- ● ● Head-Up Display<sup>15</sup>
- ● — Burmester® Premium Surround Sound System
- ○ ● Burmester High-End 3D Surround Sound system
- ● ● FrontBass® system
- ● ● Bluetooth® audio streaming
- ● ● Hands-free Bluetooth interface
- ● ● Near-Field Communication (NFC) technology
- ● ● Dual USB ports, in-dash DVD/CD player, SD card reader
- ● ● SiriusXM Radio with 6-month All Access trial<sup>14</sup>
- ● ● HD Radio™ receiver
- ● ● Mercedes-Benz mbrace®
- ● ● 5 years of mbrace Connect services<sup>7</sup>

● Standard ○ Optional — Not available





Option Packages

	S 550 4MATIC Coupe	AMG S 63 Coupe	AMG S 65 Coupe
<b>Premium Package</b>	○ ● ●		
<ul style="list-style-type: none"> <li>Active multicontour front seats with "hot stone" massage</li> <li>Rapid heating feature for front seats</li> <li>Head-Up Display<sup>15</sup></li> <li>Surround View System<sup>13</sup></li> </ul>			
<b>Driver Assistance Package</b> <i>S 550 requires Premium Package</i>	○ ○ ●		
<ul style="list-style-type: none"> <li>DISTRONIC PLUS<sup>®</sup> with Steering Assist</li> <li>PRE-SAFE<sup>®</sup> Brake with Pedestrian Recognition</li> <li>BAS<sup>®</sup> PLUS with Cross-Traffic Assist</li> <li>PRE-SAFE PLUS rear-end collision protection</li> <li>Active Blind Spot Assist</li> <li>Active Lane Keeping Assist</li> <li>Traffic Sign Assist</li> </ul>			
<b>Warmth &amp; Comfort Package</b> <i>AMG S 63 requires Driver Assistance Package, plus wood/leather steering wheel or AMG Performance steering wheel</i>	○ ○ ●		
<ul style="list-style-type: none"> <li>Heated steering wheel</li> <li>Heated rear seats</li> <li>Heated front center armrest and door armrests</li> <li>Wood/leather steering wheel <i>Included on S 550 only</i></li> </ul>			
<b>Sport Package</b>	○ — —		
<ul style="list-style-type: none"> <li>19" AMG<sup>®</sup> twin 5-spoke wheels with all-season tires<sup>2</sup></li> <li>Sport lower body styling</li> <li>Diamond-block grille with chrome-tipped pins</li> <li>Rubber-studded aluminum pedals</li> </ul>			
<b>AMG Exterior Carbon Fiber Package</b>	— ○ ○		
<ul style="list-style-type: none"> <li>Carbon fiber front air-dam splitter, side-sill and rear diffuser inserts, and side mirror covers</li> <li>Carbon fiber engine cover <i>Standard on AMG S 65</i></li> </ul>			

● Standard ○ Optional △ No-charge option — Not available

Individual options

	S 550 4MATIC Coupe	AMG S 63 Coupe	AMG S 65 Coupe
Red-painted brake calipers	— ○ ○		
AMG Carbon Ceramic Braking System <sup>16</sup>	— ○ ○		
Carbon fiber engine cover <i>Also in AMG Exterior Carbon Fiber Package</i>	— ○ ●		
Black finish for front air-dam flics and mesh grilles	— — △		
Electrically heated windshield <i>S 550 requires Premium Package</i>	○ ○ ○		
Surround View System <sup>13</sup>	○ ○ ●		
Night View Assist PLUS <sup>9</sup>	○ ○ ●		
MAGIC SKY CONTROL <sup>®</sup>	○ ○ ○		
Headlamps with Swarovski <sup>®</sup> crystal accents <i>Requires Night View Assist PLUS</i>	○ ○ ●		
19" twin 5-spoke wheels with all-season Extended Mobility tires <sup>2</sup>	○ — —		
20" 5-spoke wheels with high-performance tires <sup>2</sup>	○ — —		
19" AMG 10-spoke wheels <sup>2</sup>	— △ —		
20" AMG 10-spoke forged-alloy wheels <sup>2</sup> (Silver or Black)	— ○ △		
20" AMG twin 5-spoke forged-alloy wheels <sup>2</sup>	— — △		
Burmester <sup>®</sup> High-End 3D Surround Sound System	○ ○ ●		
SPLITVIEW front-seat entertainment system <sup>17</sup>	○ ○ ○		
Refrigerator box in rear cabin <sup>12</sup>	○ ○ ○		
Wood/leather steering wheel <i>Also in Warmth &amp; Comfort Package on S 550</i>	○ △ △		
AMG Performance steering wheel with DINAMICA side grips <i>Not available with Porcelain/Espresso Brown upholstery. AMG S 63 requires Driver Assistance and Warmth &amp; Comfort Packages</i>	— ○ ○		
Nappa leather upholstery	● ● —		
<i>designo</i> Exclusive Nappa leather upholstery, leather-trimmed dash	○ ○ ●		
<i>designo</i> DINAMICA headliner <i>Included with designo leather on S 550</i>	○ ● —		
<i>designo</i> Nappa leather headliner	— — ●		
Black Poplar or Burl Walnut wood trim	△ △ △		
<i>designo</i> wood trim: Black Piano Lacquer, Black Piano Lacquer "Flowing Lines," or Metallized Ash	○ ○ ○		
AMG carbon fiber/Black Piano Lacquer wood trim	— ○ ○		

Accessories *Selected items shown at left*

20" 10-spoke wheels <sup>2</sup>	○ — —
Illuminated Star <i>Not available with Driver Assistance Package</i>	○ ○ —
Fragrance atomizer scents	○ ○ ○
All-season floor mats	○ ○ ○
Cargo area tray	○ ○ ○
Car cover in Noah <sup>®</sup> fabric <i>Lock and cable available separately</i>	○ ○ ○

# COLOR AND TRIM

## UPHOLSTERY STYLES



Nappa leather  
● S 550 4MATIC



*designo* Exclusive Nappa leather Includes leather-trimmed dash  
○ S 550 4MATIC



AMG Nappa leather  
● AMG S 63



AMG *designo* Exclusive Nappa leather Includes leather-trimmed dash  
● AMG S 65 ○ AMG S 63

## UPHOLSTERY COLORS



Black  
Available with all upholstery styles



Crystal Grey/Black  
Available with all upholstery styles



Porcelain/Espresso Brown  
Available with all upholstery styles



Saddle Brown/Black  
*designo* Exclusive Nappa leather



Bengal Red/Black  
*designo* Exclusive Nappa leather



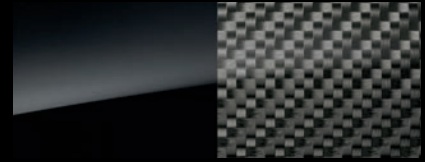
## INTERIOR TRIM



Black Poplar wood



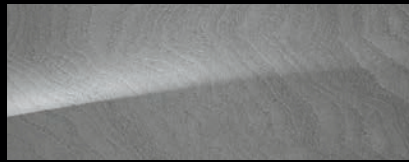
Burl Walnut wood



AMG carbon fiber/Black Piano Lacquer wood (AMG models)



*designo* Black Piano Lacquer wood



*designo* Metallized Ash wood



*designo* Black Piano Lacquer "Flowing Lines" wood

## PAINTWORK



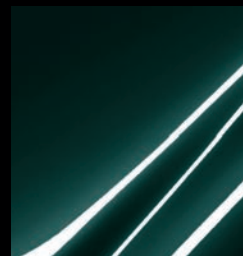
Black



Anthracite Blue metallic



Diamond Silver metallic



Emerald Green metallic



Iridium Silver metallic



Lunar Blue metallic



Magnetite Black metallic



Obsidian Black metallic



Ruby Black metallic



Selenite Grey metallic



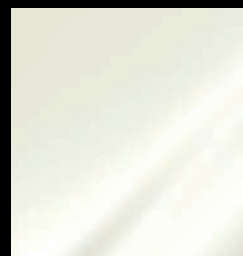
*designo* Diamond White metallic<sup>18</sup>



*designo* Mocha Black metallic<sup>18</sup>



*designo* Magno Alanite Grey<sup>18</sup> (matte finish)



*designo* Magno Cashmere White<sup>18</sup> (matte finish)

**WHEEL CHOICES**



19" triple 5-spoke<sup>2</sup>  
● S 550 4MATIC



19" twin 5-spoke<sup>2</sup>  
▲ S 550 4MATIC



19" AMG<sup>®</sup> twin 5-spoke<sup>2</sup>  
○ S 550 4MATIC Sport Package



20" AMG multispoke<sup>2</sup>  
○ S 550 4MATIC *Requires Sport Package*



20" 5-spoke<sup>2</sup>  
○ S 550 4MATIC



20" AMG 5-spoke<sup>2</sup>  
● AMG S 63



20" AMG forged, polished multispoke<sup>2</sup>  
● AMG S 65



19" AMG 10-spoke<sup>2</sup>  
▲ AMG S 63



20" AMG forged 10-spoke<sup>2</sup> (Silver)  
○ AMG S 63 ▲ AMG S 65



20" AMG forged 10-spoke<sup>2</sup> (Black)  
○ AMG S 63 ▲ AMG S 65



20" AMG forged twin 5-spoke<sup>2</sup>  
▲ AMG S 65

● Standard ○ Optional ▲ No-charge option



©2015 Mercedes-Benz USA, LLC • One Mercedes Drive, Montvale, NJ 07645 • 1-800-FOR-MERCEDES • MBUSA.com

Marketing Communications. All illustrations and specifications contained in this brochure are based on the latest product information available at the time of publication. Mercedes-Benz reserves the right to make changes at any time, without notice, to colors, materials, equipment, specifications and models. Any variations in colors shown are due to reproduction variations of the printing process. Illustrations may include test situations. Some vehicles may be shown with non-U.S. equipment. Some vehicles are shown with optional equipment. iPad, iPhone and iPod are registered trademarks or service marks of Apple Inc. Bluetooth is a registered trademark of Bluetooth SIG, Inc. Burmester is a registered trademark of Burmester Audiosysteme GmbH, Berlin, Germany. Android and Google Maps are registered trademarks of Google Inc. HD Radio is a proprietary trademark of iBiquity Digital Corporation. Sirius, XM and all related marks and logos are trademarks of Sirius XM Radio Inc. Tuneln is a registered service mark of Tuneln, Inc. Twitter is a registered trademark of Twitter, Inc. Yelp is a registered trademark of Yelp Inc.

## ENDNOTES

- 1 Stated rates of acceleration are estimated based upon manufacturer's track results and may vary depending on model, environmental and road surface conditions, driving style, elevation and vehicle load.
- 2 Lower aspect ratio tires and accompanying wheels provide substantially increased treadwear, increased tire noise and reduced ride comfort. Serious wheel and tire damage may occur if the vehicle is operated on rough or damaged road surfaces or upon encountering road debris or obstacles. These tires are not designed for use on snow and ice. Winter tires mounted on appropriately sized and approved wheels are recommended for driving in those conditions. S-Class models are not provided with a spare tire. Models without Extended Mobility tires are provided with TIREFIT sealant and a portable air pump. High-performance tires are included with all 20" wheels and on all AMG models.
- 3 COLLISION PREVENTION ASSIST PLUS may not be sufficient to avoid an accident. It does not react to certain stationary objects, nor recognize or predict the curvature and/or lane layout of the road or every movement of vehicles ahead. It is the driver's responsibility at all times to be attentive to traffic and road conditions, and to provide the steering, braking and other driving inputs necessary to retain control of the vehicle. Drivers are cautioned not to wait for the system's alerts before braking, as that may not afford sufficient time and distance to brake safely. Autonomous braking is available at speeds between approximately 5 and 65 mph for moving vehicles, or 5 and 31 mph for stationary objects.
- 4 Driving while drowsy or distracted is dangerous and must be avoided. ATTENTION ASSIST® and/or Lane Keeping Assist may be insufficient to alert a fatigued or distracted driver of lane drift and cannot be relied on to avoid an accident or serious injury. Lane Keeping Assist operates at speeds above approximately 37 mph.
- 5 Blind Spot Assist may not be sufficient to avoid all accidents involving vehicles in your blind spot and does not estimate the speed of approaching vehicles. It must not be used as a sole substitute for driver awareness and checking of surrounding traffic conditions. Blind Spot Assist operates at speeds above approximately 20 mph.
- 6 DISTRONIC PLUS® adaptive cruise control is no substitute for active driving involvement. It does not adapt cruising speed in response to stationary objects, nor does it predict the curvature and lane layout of the road ahead or the movement of vehicles ahead. It is the driver's responsibility at all times to be attentive to traffic and road conditions, and to provide the steering, braking and other driving inputs necessary to retain control of the vehicle. Drivers are cautioned not to wait for the DISTRONIC Proximity Warning System before braking, as that may not afford sufficient time and distance to brake safely.
- 7 Braking effectiveness also depends on proper brake maintenance, and tire and road conditions.
- 8 Night View Assist® PLUS does not replace the use of headlamps and must not be used as the primary visual source for the driver.
- 9 All Mercedes-Benz mbrace® services operate only where cellular and Global Positioning System satellite signals are available, which are provided by third parties and not within the control of Mercedes-Benz USA, LLC. Five years of the mbrace Connect package are included with new-vehicle sales and leases at an authorized Mercedes-Benz dealer. Subscriber Agreement is required for service to be active. Some services are only available on select vehicles. Your PIN is required in order to use certain services. Some services may be limited or restricted in some areas. Apps may be introduced and updated at varying dates, and may also require a vehicle software update. Driver is responsible for complying with traffic and other laws. See your dealer or MBUSA.com/mbrace for details, including a list of compatible smartphones. Streaming Internet-based features require an active subscription to the mbrace Entertainment Package. Connection may be limited by cellular signal.
- 10 The mbrace Mobile App is compatible with Apple iPhone® models running iOS 7.0 or later, and Android-based phones running OS 2.3 or later. Please visit MBUSA.com/mbrace for more information.
- 11 Roadside Assistance repairs may involve charges for parts, service and towing. Vehicle must be accessible from main roads. Depending on the circumstance, these services may be provided by an outside provider, courtesy of Mercedes-Benz Roadside Assistance. Restricted roadways, acts of nature and vehicle accessibility may limit our ability to provide services to you. For full details, eligibility requirements, and limitations/exclusions of Sign and Drive services, as well as the Roadside Assistance Program, please see your dealer.
- 12 Refrigerator box reduces trunk space when installed, but is removable. Please see your dealer.
- 13 Rearview camera and Surround View System do not audibly notify driver of nearby objects and are not a substitute for actively checking around the vehicle for any obstacles or people. Images displayed may be limited by camera field of view, weather, lighting conditions and the presence of dirt, ice or snow on the cameras.
- 14 The purchase or lease of a new, satellite radio-enabled vehicle includes a 6-month introductory subscription to the Sirius All Access package, as well as a 5-year introductory subscription to SiriusXM Traffic and SiriusXM Weather. SiriusXM Traffic and Weather services are available for select markets. SiriusXM Satellite Radio, SiriusXM Traffic and SiriusXM Weather subscriptions are sold separately or as a package after trial period. If you decide to continue your subscription after your trial, the plan you choose will automatically renew and you will be charged according to your chosen payment method at then-current rates. Fees and taxes apply. To cancel you must call SiriusXM at 1-866-635-2349. See SiriusXM Customer Agreement for complete terms at siriusxm.com. All fees and programming subject to change.
- 15 Head-Up Display may not be visible with certain eyewear, including polarized glasses.
- 16 The carbon-ceramic brakes are designed expressly for high-performance braking. It is a characteristic of their materials and design that brake noise/squeal may result, along with differing brake pedal feel at lower brake temperatures compared to higher operating temperatures.
- 17 System availability and use are not yet approved in some states. See your dealer for the latest information, and check local laws regarding the use of front-seat video displays in your area. Driver can also view the entertainment features while the gear selector is in Park.
- 18 Extra-cost option. Some *designo* paintwork, upholstery and trim options may require additional production time. Please see your dealer.



The personal rewards of striving to be the best are even more meaningful in the development of young people than they are for automobiles. Instilling the values of leadership, goal-setting, discipline and teamwork in youth is an investment in everyone's future. It's why Mercedes-Benz USA is collaborating with the Laureus Sport for Good Foundation, with an ongoing commitment to train and place hundreds of coaches for after-school and in-school sports programs in communities around the country. Sports offer kids more than the chance to be physically active and have fun. It's also an opportunity to have a mentor who can guide them, help them learn how to deal with major life issues, and help them grow stronger not just physically but in their character. As a Mercedes-Benz driver, you become a part of this effort to give hundreds of thousands of kids a better life today, and all of us a brighter tomorrow.

Learn more about how Mercedes-Benz USA believes in giving back at [MBUSA.com/community](http://MBUSA.com/community)