

Mercedes-Benz USA, LLC  
One Mercedes Drive  
Montvale, NJ 07645  
1-800-FOR-MERCEDES  
MBUSA.com

© 2013 Mercedes-Benz USA, LLC  
A Daimler Company

All illustrations and specifications contained in this brochure are based on the latest product information available at the time of publication. Actual product offerings may vary from those shown or may be subject to availability delays or discontinuance. Mercedes-Benz reserves the right to make changes at any time, without notice, in colors, materials, equipment, specifications and models. Any variations in colors shown are due to reproduction variations of the printing process. Illustrations may include test situations. Some vehicles may be shown with non-U.S. equipment. Vehicles are shown with optional equipment.

Unsecured cargo can become hazardous in a collision. Always secure cargo using the floor-mounted tie-down hooks. Cargo nets and organizers are not intended to prevent objects of excessive weight and bulk from sliding or rolling in the event of a collision or sudden stop. Always drive with caution when driving with cargo.

Certain accessories may require professional installation and/or additional components to complete the installation in your vehicle. Please consult your authorized Mercedes-Benz dealer for specific information about automotive accessories. Speak with a representative at your local authorized Mercedes-Benz dealership for current pricing on Genuine Mercedes-Benz Accessories. Visit [accessories.mbusa.com](http://accessories.mbusa.com) to shop the Lifestyle Collection online.



Genuine Mercedes-Benz Accessories  
for the M-Class.

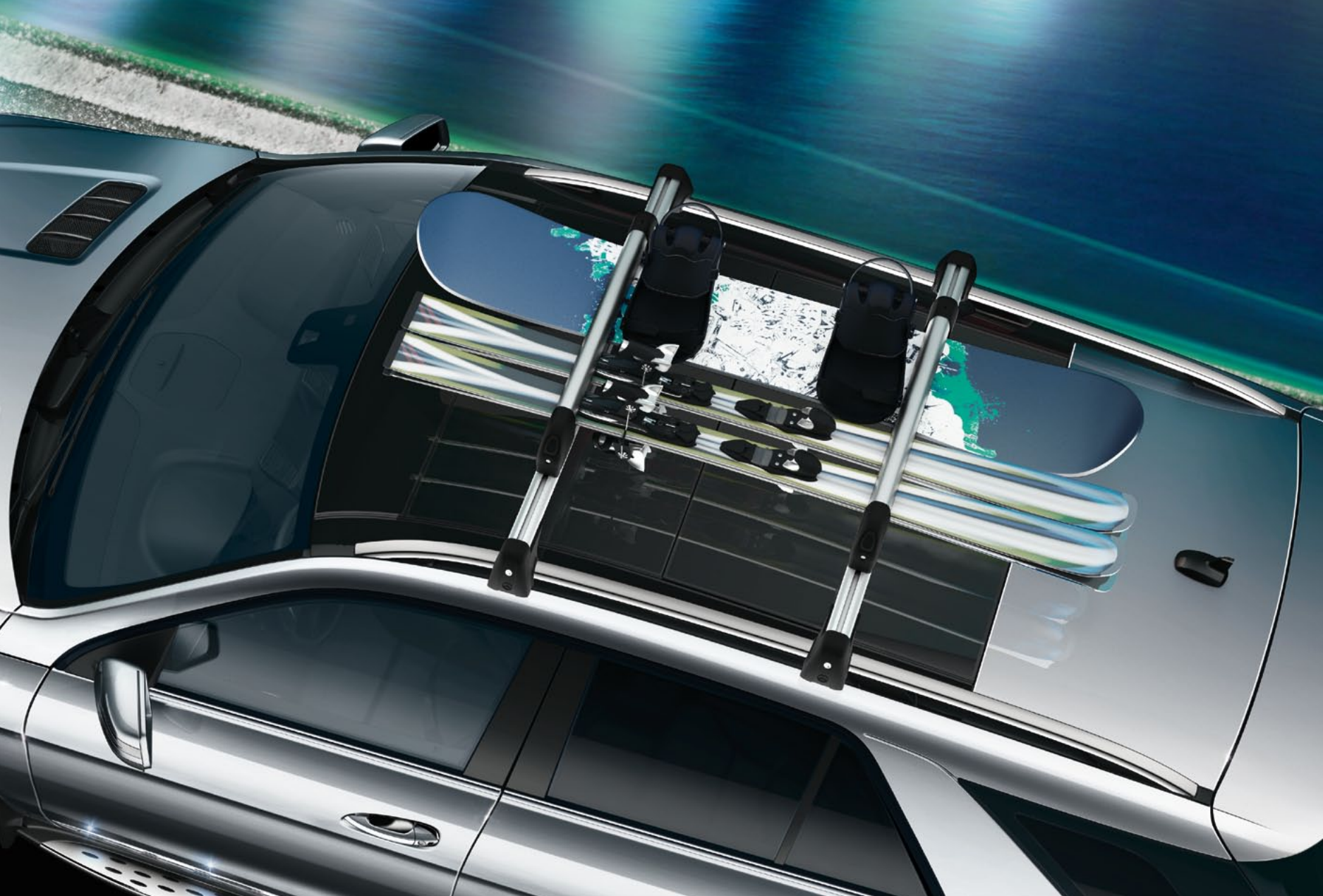


Mercedes-Benz

# Content

04	<b>APPEARANCE</b> Light-Alloy Wheels Exterior Appearance Interior Appearance
10	<b>ELECTRONICS</b> In-Vehicle Hotspot Navigation Map Update iPad® Docking Station Rear-Seat Entertainment System SD Memory Card
14	<b>UTILITY &amp; CARE</b> Cargo Management Car Care Car Utility Child Safety Seats
24	Quality & Safety
26	Index





**01 20" 5-Twin Spoke Wheel**

Finish: palladium silver, highsheen

Wheel Size: 9J x 20 ET 57 | Tire Size: 265/45 R20

A166 401 1802 7X19



02 | 20"

**02 20" AMG 5-Spoke Wheel**

Finish: silver, highsheen

Wheel Size: 9J x 20 ET 57 | Tire Size: 265/45 R20

A166 401 2002 7X25



01 | 20"

# Appearance

Light-Alloy Wheels



## 03 19" 5-Twin Spoke Wheel

Finish: titanium silver

Wheel Size: 8.5J x 19 ET 62 | Tire Size: 255/50 R19

A166 401 1702 9765



## 04 21" 5-Twin Spoke Wheel

Finish: titanium silver

9 J x 21 ET 53 | Tire Size: 265/40 R21 XL

A166 401 2702 7X21

Only applicable on vehicles with AIRMATIC

## 05-09 Wheel Hub Inserts

Add an attractive finishing touch to your wheels with these inserts.

Various styles available:

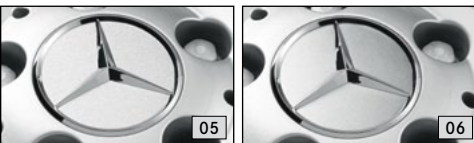
05 Sterling silver with chrome Three-Pointed Star

06 Titanium silver with chrome Three-Pointed Star

07 Classic Star & Laurel design in blue

08 Classic Star & Laurel design in black

09 Black with chrome Three Pointed Star



## 10 Wheel Locks

Wheel locks can provide a subtle yet effective security touch to your M-Class, helping to protect your light-alloy wheels and tires from theft. One set secures four wheels. Includes coded key.

## 11 Tire Valve Stem Caps

A perfect finishing touch, these chrome plated valve stem caps dress up any wheel. Each a set of four. Available in black, silver or AMG designs.



01



02



03

#### 01-03 License Plate Frames

Choose from several quality stainless steel designs in an assortment of durable finishes to enhance the appearance of your license plates without blocking registration tags. Design styles include: Mercedes-Benz frame, Slimline frame, AMG Logo frame, and Star Marque solid plate. Please see Index for finish options for each design.

- 01 Marque Plate with star logo
- 02 Nameplate Frames Mercedes-Benz (Polished, Black Powder Coat) and AMG (Carbon Fiber)
- 03 Slimline Frame (Black Pearl)

#### 04 Trunk Handle

Made of stainless steel in polished or satin finish, this handle attaches to the license plate and trunk lid to help prevent fingerprints and reduce the possibility of scratching the finish on your M-Class. It perfectly complements our wide assortment of genuine License Plate Frames. Also available with elegantly laser-etched Mercedes-Benz name.

# Appearance

Exterior  
Interior



## 05 Wood & Leather Steering Wheel

Add a touch of distinctive elegance to your M-Class with this steering wheel, made from durable richly-grained leather and hand-burnished ash brown wood (shown in image). The Wood & Leather Steering Wheels are available in various colors and wood options to match the interior of your vehicle.

Not compatible with heated steering wheel models. Not compatible with AMG models.

## 06 AMG Door Pin (single piece)

In high-quality stainless steel.



01



03



## 01 Illuminated Star

The Illuminated Star is the ideal personal touch. It's subtle, but eye-catching. Bright, but sophisticated. It's a new and exciting way to make your Mercedes-Benz truly yours. Now available for select models, please see dealer for further details.

Illuminated Star not applicable on models equipped with Distronic/Distronic Plus.

## 02 Chrome Door Handle Inserts

Help protect your finish from scratches and add a touch of style with a set of four chrome door handle inserts.

## 03 Illumination Kit for Side Running Boards

Add a sense of style as well as safety to your M-Class with this eye-catching Illumination Kit for your Side Running Boards. Comes in a set of two with five LED spots per side. (Side Running Boards sold separately)

## 04 Chrome Hood Fins

This set of six Chrome Fins visually enhances the appearance of your vehicle after easily being attached to the hood.



## MERCEDES-BENZ IN-VEHICLE HOTSPOT

*Take the Internet Anywhere on the Road*

### 01 Mercedes-Benz In-Vehicle Hotspot

Checking your email and browsing the web is not a problem when you're in the office or from the convenience of your home. However, this is a different story when you're traveling on the road. With the Mercedes-Benz In-Vehicle Hotspot you can add internet connectivity to your vehicle. The In-Vehicle Hotspot allows you to connect up to four wireless end devices such as a laptop, tablet PC, or mobile device at the same time for a fast and secure internet connection. The router is securely installed and easily accessible. An encrypted password ensures limited access to your wireless connection.

Requires an initial activation fee and monthly service subscription.

*The hotspot allows you to connect up to four wireless end devices such as a laptop, tablet PC, or mobile device at the same time for a fast and secure internet connection.*



## REAR-SEAT ENTERTAINMENT

*Being a passenger has never been so entertaining.*

### 02 Portable Rear-Seat Entertainment System

This high-performance entertainment system allows the rear passengers to watch DVDs, look at their favorite pictures and even play video games. Two superb 7" LCD color screens are mounted to the back of the seat just behind the headrest to eliminate driver distraction, function independently with integrated DVD players and are able to play two different movies or music choices simultaneously. Wireless noise-reduction headphones allow for tangle-free operation, easy storage and less noise distraction for the driver. The USB and SD card interfaces allow further storage media to be connected with the Rear-Seat Entertainment System. Additionally, the monitors can be removed at any time in order to create additional space for the rear bench. Once removed the monitors can be used outside of the vehicle with an optional power cable.

Cannot be fitted with factory pre-installation.

### Accessory Rear-Seat Entertainment System | not shown

This high-performance entertainment system allows the rear passengers to watch DVDs, look at their favorite pictures and even play video games. Two superb 7" LCD color screens are mounted to the back of the seat just behind the headrest to eliminate driver distraction, function independently with integrated DVD players and are able to play two different movies or music choices simultaneously, allowing each rear passenger to select their own individual entertainment. Wireless noise-reduction headphones allow for tangle-free operation, easy storage and less noise distraction for the driver. A wide range of popular media formats are supported for image, music and video files. The USB and SD card interfaces allow further storage media to be connected with the Rear-Seat Entertainment System. Requires factory pre-fitting.



# ELECTRONICS

In-Vehicle Hotspot  
Rear-Seat Entertainment



## 03 SD Memory Card

The COMAND system and Rear-Seat Entertainment System in your M-Class feature a slot for SD Memory Cards. Use the SD Memory Card as a convenient way to play music through the vehicle's loudspeakers while used with COMAND or view images on your Rear-Seat Entertainment System. Can also be used in other compatible devices such as digital cameras.

Card capacity: 2GB | Read speed: 12.5MB/s | Write speed: 5.5 MB/s



03



B



C

*A range of multimedia connections [A], two sets of infrared headphones [B] and a remote control [C] included - the Rear-Seat Entertainment System offers everything you need for in-car entertainment.*

# IPAD® DOCKING STATION

Take your Entertainment anywhere



01



02

## 01 iPad® Docking Station

Mobile entertainment with your Mercedes-Benz and your iPad®: Watch movies, play music, view pictures, play games, surf the internet, all from the convenience of your iPad® without having to hold it in your hands. The Mercedes-Benz iPad® Docking Station securely holds your iPad® in place behind the passengers' headrests. Enjoy a high-speed connection in conjunction with the Mercedes-Benz In-Vehicle Hotspot. Not only will your iPad® be held securely in place, the docking station also provides charging capability to ensure you stay connected on the road. For optimum viewing, the iPad® Docking Station can be rotated up to 90 degrees and be tilted. Suitable for iPad®, iPad 2® and iPad 3®.

## 02 iPad® Docking Station (clip-on)

The mount for your iPad®, iPad 2® or iPad 3® is simple to attach to the head restraint posts and can be removed at any time. The mount tilts and can be rotated around 90°. Openings at the side ensure that all of your iPad®'s connection points are still accessible.

Docking station sold individually for one iPad®. Not in conjunction with Rear-Seat Entertainment System (Code 864). iPad® is a registered product of Apple Computer. All devices sold separately. iPad® Docking Station also charges iPad® devices which support USB charging only (Not available with clip-on version). Not available for AMG variant.

# MERCEDES-BENZ NAVIGATION MAP UPDATE

More than a Map™

# ELECTRONICS

iPad® Docking Station  
Navigation Map Update



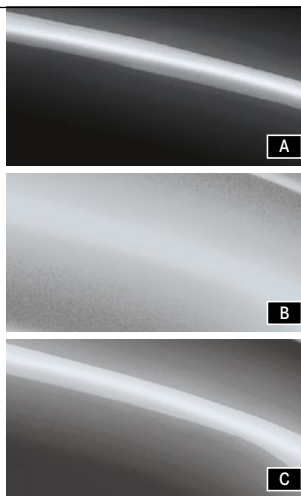
## 03 Navigation Map Update

The Mercedes-Benz COMAND Navigation System is a fully integrated system that combines Global Positioning System (GPS) technology with electronic mapping software to help you plan trips, navigate detours and avoid getting lost. GPS satellites continuously track your vehicle's location and the system relies on mapping information in order to give you the most accurate and efficient routes. Notice however, how quickly the surroundings change: roads are added or diverted, restaurants open and close, hotels and hospitals are built, ATMs move. In fact, as much as 20 percent of the navigation data the system relies on changes every year. That is why Mercedes-Benz offers reliable, and updated navigation data to help get you where you need to go effortlessly.

The Navigation Map Updates are available for purchase from your authorized Mercedes-Benz dealer. The system can route you through more than 6.2 million miles of navigable roads in the United States and Canada. Just enter the address on the intelligent destination input screen, and the system takes over, guiding you audibly and with a clear and detailed 7" LCD map display. Do you need an idea of where to go? The Navigation System also offers 2.3 million Points of Interest in 70 categories including ATMs, restaurants, hotels, airports, museums and more.



01



A

B

C

*Boxes open on both sides for convenient loading and unloading.*



01 02

### 01 Mercedes-Benz Roof Boxes

Create additional space for sports equipment and luggage with one of our aerodynamic, high quality roof containers designed to nicely complement your M-Class. Constructed of lightweight, yet exceptionally durable, impact tested thermoplastic material. Features pressurized struts for easy lid operation and a security lock.

- 450 model holds 16 cubic feet. Available in black metallic [B] and matte silver [C].
- 400 model holds 14 cubic feet. Available in matte silver [C] and black metallic [A].
- 330 model holds 11.5 cubic feet. Available in matte silver [C] and titanium metallic [B]. Requires Roof Rack Basic Carrier (sold separately).



### 02 Roof Rack Basic Carrier

Our basic carrier is an essential component for attaching a wide assortment of items to the top of your M-Class. After easy installation, you can securely attach bicycles, ski and snowboard racks, or a cargo container. (Racks and boxes sold separately.)

### 03 Roof Rack Basic Carrier Storage Bag

Protect your Roof Rack Basic Carrier in this nylon bag when not attached to your M-Class.



### 04 Luggage Set for Mercedes-Benz Roof Boxes

Made from durable, weather resistant materials. Shoulder straps included. (Luggage Set and Mercedes-Benz Roof Box sold separately.)

#### Luggage Set for Mercedes-Benz Roof Box 330

Set includes four luggage bags.

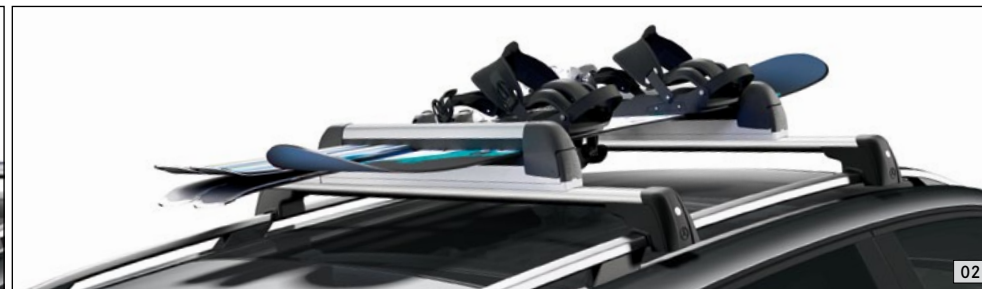
#### Luggage Set for Mercedes-Benz Roof Box 400

Set includes three luggage bags and one ski bag (max. two pairs of skis per bag).

#### Luggage Set for Mercedes-Benz Roof Box 450

Set includes four luggage bags and two ski bags (max. two pairs of skis per bag).





**01 Ski & Snowboard Rack, Standard**

This rack is made to tote up to four pairs of skis or two snowboards atop your M-Class. Requires Roof Rack Basic Carrier (sold separately).

**02 Ski & Snowboard Rack, Deluxe**

This rack holds up to six pairs of skis or four snowboards and features a pull-out function that makes it easier for loading and unloading without the need to reach across the roof of the car. Requires Roof Rack Basic Carrier (sold separately).

**03 Trailer Hitch**

Take advantage of your M-Class' considerable hauling capacity with our Class III trailer hitch, capable of towing up to 7,200 lbs. Designed especially for Mercedes-Benz with a corrosion-resistant surface treatment.

# Utility & Care

Carrier Systems



## 04 Bicycle Rack for Roof Rack Basic Carrier

This rack securely holds your bicycles and attaches to the Roof Rack Basic Carrier (sold separately). Up to 3 racks can be mounted simultaneously.

## 05 Spiral Lock Set

Available to help secure your bicycle (sold separately).



### 01 Coat Hanger

Robust coat hangers made from chromed metal. Easy to attach to front headrests. The ideal way to transport clothing without creasing them. (For safety, please remove with passenger in rear seat.)



### 02 Collapsible Shopping Crate

Make your next trip to the market more convenient with this collapsible shopping crate. To save space, it folds flat when not in use. Dimensions folded: 2" x 13" x 18".

### 03 Flexible Cargo Stabilizer

This durable nylon and velcro-clad piece of foam offers firm lateral hold and helps protect objects from sliding around under normal driving conditions. Measures 36" x 2" x 2".



### 04 Cargo Area Tray & Cargo Box

Protect the cargo area of your M-Class with this large tray with 2" sides. Formed from durable, easy-to-clean plastic to fit your vehicle. Use up to two optional Cargo Boxes to support and keep in place tall objects, such as grocery bags. Cargo Box sold separately.

### 05 Wire Mesh Dividers

Versatile and sturdy, these three metal dividers easily partition the cargo area of your M-Class from the passenger space or in half side-to-side. Attaches to existing mounting points in the vehicle. Top, bottom and lateral dividers (each sold separately).

### 06 Cargo Nets, Floor, Loading Sill/Rear

Versatile and convenient, strong and durable nylon nets help you to secure objects in the back of your M-Class. Rear net may be attached to the loading sill. Each net is sold separately.

### 07 Reversible Cargo Mat

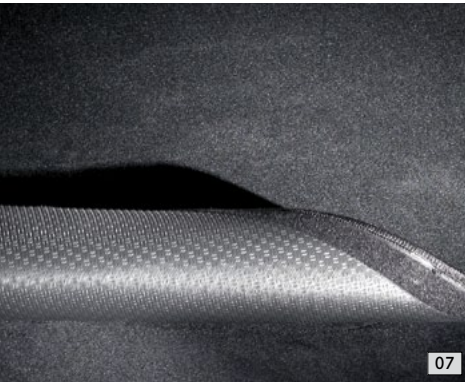
This non-slip mat pulls double duty to protect the interior carpet of your M-Class with a smooth, firm side and a soft fabric side. Constructed of highly durable 100% polyester. Available in black.

### 08 Cargo Divider Bars

Partition your load compartment to suit your requirements and prevent the contents from sliding around. The brackets can be freely positioned along the outer edges of the load floor and the telescopic bars provide.

### 09 Load Sill Protector

Protects bumper and load sill from scratches.





01



02

#### 01 Car Cover

This UV-resistant 3-layer cover helps protect the finish of your M-Class from the elements. Made from breathable Noah® fabric, it combines an excellent fit with durable construction. (Lock and cable available separately.)

#### 02 UVS-100™ Sunshade

Keeps the inside of your M-Class cool, while protecting the interior all year long from harmful UV rays. Practical and durable. Made of reflective fabric laminated to a foam core.

### 03 Mud Flaps

Designed to match the contours of the M-Class, these durable formed black plastic mud flaps will help protect your vehicle from road debris, rock and salty road spray. Available in pairs for the front and the rear.

### 04 Car Care Kit Interior

Keep the interior of your Mercedes-Benz looking its best with the superior, specially formulated products in our exclusive Interior Car Care Kit. Includes Cabin Care Spray, Glass Cleaner, Auto Glass Sponge and a Car Care Cloth, all neatly packed into a Mercedes-Benz Leisure Bag.

### 05 Car Care Kit Exterior

Clean and protect your Mercedes-Benz with the superior, specially formulated products in our exclusive Exterior Car Care Kit. Includes Car Shampoo, Light-Alloy Wheel Cleaner with brush, Car Sponge and a Car Care Cloth, all neatly packed into a Mercedes-Benz Leisure Bag.

### 06 Battery Trickle Charger

For those extended periods when your M-Class will not be used, this charging device will help ensure that your battery is fully energized when you need it.





01

02



02



03

### 01 BabySafe Plus Infant Seat (up to 29 lbs.)

Deep, molded rear-facing seat design provides extra protection and padding designed to help protect very young children up to 29 lbs. or 31 in. long. Features integrated head support, adjustable sun/wind canopy, comfortable 3-position carry handle, and variable recline angle adjustment. Light grey fabric cover is removable for washing. Can be used in the vehicle with or without the base. Approved for use in commercial aircrafts. Weighs less than 8 lbs. This seat is BabySmart\* compatible and LATCH\* compatible with provided LATCH belt\*.

### 02 DUO Plus Toddler Seat (20 to 40 lbs.)

Designed to afford excellent protection for children approximately 1 to 4 years of age. Features include single-handed adjustment to change from the upright position to the reclined and sleeping positions, height-adjustable shoulder belt, back area ventilation channels, and an additional tether for securing the top section. Fabric cover is removable for washing. This seat is LATCH\* and BabySmart\* compatible.

### 03 KidFix Child Seat (33 to 79 lbs.)

Booster seat for optimum side-impact protection, with height-adjustable backrest. The “KidFix” seat is secured using the 3-point seat belt and ISOFIX attachment points. Available with automatic child seat recognition as an option. For children between the ages of around 3 and a half and 12.

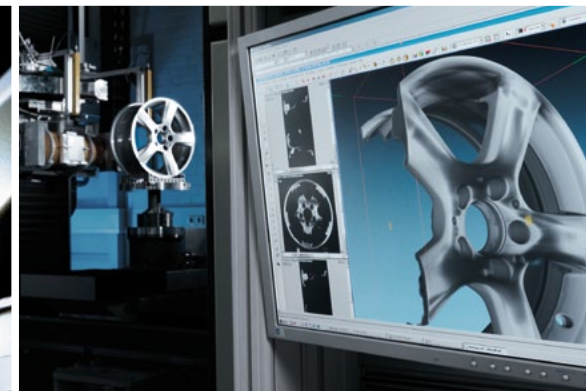
\*Please consult your owner’s manual or dealer for proper installation of your child seat.

BabySmart/OCS Safety Information: Most Mercedes-Benz vehicles from MY 1998 through 2003, select models from 2004 through 2006, and current G-Class vehicles are equipped with BabySmart™. Mercedes-Benz vehicles equipped with BabySmart™ have a device that recognizes the presence of BabySmart™-equipped child seat when properly installed in the front passenger seat and deactivates the passenger front air bag (check your vehicle’s Operator’s Manual or labels located on the sides of your dashboard to verify).

All current Mercedes-Benz models are equipped with the Occupant Classification System (OCS) (with exception of the G-Class) which is designed to turn off the front passenger’s front airbag when the system senses the weight of a typical child 12 months old or less plus the weight of a standard child restraint. See vehicle’s operator manual for important additional information on this system and further information regarding the transportation of children heavier than a typical 12 month old.

All Mercedes-Benz child safety seats meet or exceed U.S. Department of Transportation standards. They are also suitable for use in older vehicles that do not have integrated LATCH (Lower Anchors and Tethers for Children) attachment points. Visit the National Highway Traffic Safety Administration’s website at <http://www.NHTSA.gov> for additional information about child safety seat laws and proper use.





## I. Design & Development

Genuine Mercedes-Benz Accessories make your dream car a reality - while ensuring that it remains a Mercedes-Benz through and through:

- ▶ Individualization options are developed in accordance with the Mercedes-Benz car design philosophy.
- ▶ The use of CAD data from Mercedes-Benz Vehicle Development ensures precision-fit accessories.

## II. Quality & Safety

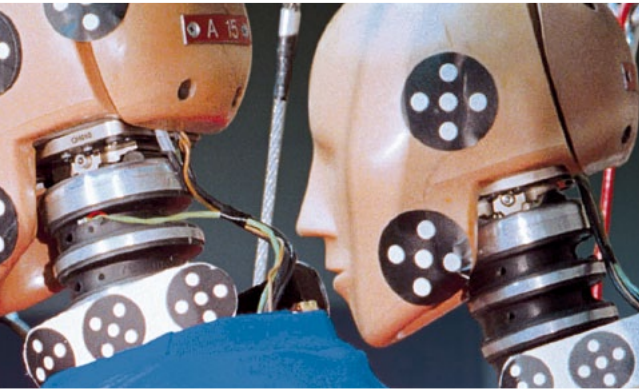
When it comes to Mercedes-Benz vehicles, quality and safety are paramount. You can feel equally safe with Genuine Mercedes-Benz Accessories as a result of:

- ▶ Stringent safety measures and extensive load testing, including the use of crash test facilities and the wind tunnel.
- ▶ Harmonized development of both vehicle and Genuine Mercedes-Benz Accessories.

# Mercedes through and through

# Quality & Safety

When you drive a Mercedes-Benz, you do so for the best of reasons. Why should your choice of accessories be governed by different standards? Pioneering when it comes to design and technology, Genuine Mercedes-Benz Accessories deliver on the promises of a major brand.



## III. Function & Operation

Genuine Mercedes-Benz Accessories form part of the vehicle concept from the outset. This results in impressive functional solutions:

- ▶ Fully integrated telematics products can be operated safely and conveniently using the multifunctional steering wheel.
- ▶ Roof-mounted carrier systems can be fitted quickly and without the use of additional tools.
- ▶ Instructions and manuals are in standard format and easy to understand.

## IV. Advice & Fitting

No one is as familiar with the ins and outs of your vehicle as our dealers. And the same goes for Genuine Mercedes-Benz Accessories:

- ▶ Contact your authorized Mercedes-Benz dealer for expert advice.
- ▶ Trust Mercedes-Benz specialists when it comes to fitting Genuine Mercedes-Benz Accessories.

# Genuine Mercedes-Benz Accessories for the M-Class.

Light-alloy wheels are supplied without tires, wheel bolts or hub caps.

Item	P.	Part no.
<b>AMG Door Pin (single piece)</b>	07	A000 766 0228
<b>Battery Trickle Charger</b>	21	A000 982 0221
<b>Bicycle Spiral Lock (3 mm, Single)</b>	17	A000 583 1595
<b>Bicycle Spiral Lock (6 mm, Single)</b>	17	B6 685 1712
<b>Bicycle Rack for Roof Rack Basic Carrier</b>	17	A000 890 0293
<b>Car Care Kit Exterior</b>	21	A211 986 0100
<b>Car Care Kit Interior</b>	21	A211 986 0000
<b>Car Cover</b>	20	BQ 660 0094
<b>Cargo Area Tray</b>	18	A166 814 0041
<b>Cargo Mat, Reversible</b>	19	A166 680 0146
<b>Cargo Net, Floor</b>	19	A166 868 0174
<b>Cargo Net, Loading Sill/Rear</b>	19	A212 868 0474
<b>Chrome Door Handle Inserts (Set of 4)</b>	09	A166 760 0000
<b>Chrome Hood Fins (Set of 6)</b>	09	A166 880 0082
<b>Coat Hanger</b>	18	A000 814 0132
<b>Collapsible Shopping Crate</b>	18	B6 647 0995
<b>Child Safety Seats</b>		
<b>BabySafe Plus Infant Seat (up to 29 lbs.)</b>	23	B6 686 8214
<b>DUO Plus Toddler (20-40 lbs.)</b>	23	B6 686 8219
<b>KidFix Child Seat (33-79 lbs.)</b>	23	A000 970 1500 9G43
<b>Decorative Hitch Plug</b>	-	BQ 631 0005
<b>Flexible Cargo Stabilizer</b>	18	B6 664 8220
<b>Illuminated Star</b>	09	BQ 688 0126
<b>Illumination Kit for Side Running Boards</b>	09	A166 906 1801 28
<b>In-Vehicle Hotspot</b>	10	BQ 682 9001

Item	P.	Part no.
<b>iPad® Docking Station</b>		
for iPad 1®	12	A166 820 0076
for iPad 2/3®	12	A166 820 0276
<b>iPad® Docking Station (clip-on)</b>		
for iPad 1®	12	A218 820 0476
for iPad 2®	12	A218 820 0576
<b>Licence Plate Frames</b>		
<b>AMG Frame (Black pearl coat stainless steel)</b>	06	BQ 688 0091
<b>AMG Frame (Polished stainless steel)</b>	06	BQ 688 0087
<b>AMG Frame (Carbon fiber inlay)</b>	06	BQ 688 0023
<b>Marque Plate with Star logo (Black powder coat stainless steel)</b>	06	BQ 688 0059
<b>Marque Plate with Star logo (Polished stainless steel)</b>	06	BQ 688 0058
<b>Mercedes-Benz Frame (Black pearl coat stainless steel)</b>	06	BQ 688 0090
<b>Mercedes-Benz Frame (Black powder coat stainless steel)</b>	06	BQ 688 0088
<b>Mercedes-Benz Frame (Polished stainless steel)</b>	06	BQ 688 0086
<b>Mercedes-Benz Frame (Satin stainless steel)</b>	06	BQ 688 0100
<b>Mercedes-Benz frame (with carbon fiber inlay)</b>	06	BQ 688 0122
<b>Slimline Frame (Black pearl coat stainless steel)</b>	06	BQ 688 0092
<b>Slimline Frame (Black powder coat)</b>	06	BQ 688 0104
<b>Slimline Frame (Black powder coat stainless steel)</b>	06	BQ 688 0007
<b>Slimline Frame (Polished stainless steel)</b>	06	BQ 688 0005
<b>Slimline Frame (Satin stainless steel)</b>	06	BQ 688 0101
<b>Slimline Frame (Stainless steel)</b>	06	BQ 688 0103
<b>Slimline Frame (Stainless steel with Laser Etch)</b>	06	BQ 688 0124
<b>Slimline Frame (Black Powder with Laser Etch)</b>	06	BQ 688 0125

Item	P.	Part no.
<b>Light-Alloy Wheels</b>		
20" AMG 5-Spoke Wheel (silver/high sheen) 9 J x 20 ET 57; 265/45 R20	04	A166 401 2002 7X25
20" 5-Twin Spoke Wheel (palladium silver/high sheen) 9 J x 20 ET 57; 265/45 R20	04	A166 401 1802 7X19
19" 5-Twin Spoke Wheel (titanium silver) 8.5 J x 19 ET 62; 255/50 R19	05	A166 401 1702 9765
21" 5-Spoke Wheel (titanium silver) 9 J x 21 ET 53; 265/40 R21 XL (only applicable on vehicles with AIRMATIC)	05	A166 401 0802 9765
<b>Load Sill Protector</b>	19	A212 680 0246
<b>Luggage Set</b> for Mercedes-Benz Roof Box 330	15	A000 890 0411
<b>Luggage Set</b> for Mercedes-Benz Roof Box 400	15	A000 890 0911
<b>Luggage Set</b> for Mercedes-Benz Roof Box 450	15	A000 890 0511
<b>Mud Flaps</b>		
Front, for vehicles with running boards, black	21	A166 890 0478
Front, for vehicles without running boards, black	21	A166 890 0078
Rear, black	21	A166 890 0278
<b>Navigation Map Update</b>	13	see dealer
<b>Rear-Seat Entertainment System</b>		
Accessory Rear-Seat Entertainment System	10	A166 870 0096
Portable Rear-Seat Entertainment System	10	A166 870 0796
<b>Mercedes-Benz Roof Box 330</b>		
Silver, Matte	14	A000 840 4262
Titanium, Metallic	14	A000 840 4362
<b>Mercedes-Benz Roof Box 400</b>		
Black, Metallic	14	A000 840 0000
Silver, Matte	14	A000 840 0100
<b>Mercedes-Benz Roof Box 450</b>		
Black, Metallic	14	A000 840 3962
Silver, Matte	14	A000 840 3762

Item	P.	Part no.
<b>Roof Rack Basic Carrier</b>	15	A166 890 1393
<b>Roof Rack Basic Carrier Storage Bag</b>	15	A000 890 0111
<b>SD Memory Card</b>	11	B6 782 3973
<b>Ski Rack Insert</b> for Mercedes-Benz Roof Box 330	-	A000 840 4718
<b>Ski Rack Insert</b> for Mercedes-Benz Roof Box 450	-	A000 840 4818
<b>Ski &amp; Snowboard Rack, Standard</b>	16	A000 890 0393
<b>Ski &amp; Snowboard Rack, Deluxe</b>	16	A000 890 0493
<b>Tire Valve Stem Caps (AMG)</b>	05	BQ 640 8127
<b>Tire Valve Stem Caps (Black)</b>	05	BQ 640 8126
<b>Tire Valve Stem Caps (Silver)</b>	05	BQ 640 8128
<b>Trailer Hitch</b>	16	A166 310 0195
<b>Trunk Handle</b> (Polished Stainless Steel)	06	BQ 675 0004
<b>Trunk Handle</b> (Satin Stainless Steel)	06	BQ 675 0034
<b>Trunk Handle with Mercedes-Benz laser-etching</b> (Polished Stainless Steel)	06	BQ 675 0035
<b>Trunk Handle with Mercedes-Benz laser-etching</b> (Stainless Steel)	06	BQ 675 0036
<b>UVS-100™ Sunshade</b>	20	BQ 667 0039
<b>Wheel Hub Inserts</b>		
Black with chrome Three-Pointed Star	05	B6 647 0200
Classic Star & Laurel design in black	05	B6 647 0201
Classic Star & Laurel design in blue	05	B6 647 0120
Sterling silver with chrome Three-Pointed Star	05	B6 647 0202
Titanium silver with chrome Three-Pointed Star	05	B6 647 0203
<b>Wheel Locks</b>	05	B6 647 0156
<b>Wire Mesh Dividers</b>	18	A166 860 0042
<b>Wood &amp; Leather Steering Wheels</b>	07	see dealer