

14EXPLORER



SPECIFICATIONS



Go Further



Terrain-conquering capability **AND** class-leading highway mpg¹

SPECIFICATIONS

Standard Features

Mechanical

4-wheel disc Anti-Lock Brake System (ABS)
18.6-gallon fuel tank
Cruise control
Easy Fuel [®] capless fuel filler
Electric power-assist steering
Hill start assist
Independent front and rear suspension
Trailer sway control

Seating

1st-row bucket seats
2nd-row 60/40 split fold-flat seat with fore/aft adjustable 40 section
3rd-row 50/50 split fold-flat seat

Interior

1st-, 2nd- and 3rd-row dome/map lights
1st-row center console with armrest and storage
12-volt powerpoints (2 in 1st row, 1 in 2nd row and 1 in rear cargo area)
Accessory delay for power features
Adjustable driver and front-passenger sun visors with covered vanity mirrors
Air conditioning with auxiliary rear controls
Cabin air filter

Cargo area hooks

Front-passenger (1) and B-pillar (2) assist handles
Load floor tie-down hooks
Overhead console with sunglasses holder
Power door locks
Power windows
Rear-window defroster
Steering wheel-mounted cruise, audio, and 5-way MyFord [®] controls (2)
Tilt/telescoping steering column

Exterior

Automatic headlamps
Bi-functional projector-beam halogen headlamps
Dual chrome exhaust tips
LED taillamps
Power sideview mirrors with integrated blind spot mirrors
Privacy glass (rear doors, rear quarter windows and liftgate window)
Rear spoiler
Roof-mounted antenna
Windshield wipers – Front: speed-sensitive, variable-intermittent with washer; rear: 2-speed with washer

Safety & Security

Personal Safety System [™] for driver and front passenger includes dual-stage front airbags ² ; safety belt pretensioners, safety belt energy-management retractors, safety belt usage sensors, driver's seat position sensor, crash severity sensor, restraint control module and Front-Passenger Sensing System
AdvanceTrac [®] with RSC [®] (Roll Stability Control [™]) and Curve Control
Autolock
Battery saver with headlamps-off delay
Belt-Minder [®] front safety belt reminder
Child-safety rear door locks
Front height-adjustable shoulder safety belts
Front-passenger knee airbag ²
Front-seat side airbags ²
Illuminated Entry System
LATCH – Lower Anchors and Tether Anchors for Children (2nd-row outboard and 3rd-row passenger-side seating positions)
MyKey [®]
Safety Canopy [®] System with side-curtain airbags ² and rollover sensor
SecuriLock [®] Passive Anti-Theft System
SOS Post-Crash Alert System [™] unlocks doors, flashes hazard lights and sounds horn after airbag deployment or safety belt pretensioner activation in certain collisions ³
Tire Pressure Monitoring System (excludes spare)

Engines/EPA-Estimated Ratings & Dimensions

3.5L Ti-VCT V6

290 hp @ 6,500 rpm
255 lb.-ft. of torque @ 4,000 rpm
6-speed SelectShift [®] automatic
FWD 17 city/24 hwy/20 combined mpg
4WD 17 city/23 hwy/19 combined mpg

2.0L EcoBoost[®] I-4

240 hp @ 5,500 rpm ⁴
270 lb.-ft. of torque @ 3,000 rpm ⁴
6-speed automatic
FWD 20 city/28 hwy/23 combined mpg

3.5L EcoBoost V6

365 hp @ 5,500 rpm ⁴
350 lb.-ft. of torque @ 3,500 rpm ⁴
6-speed SelectShift automatic
4WD 16 city/22 hwy/18 combined mpg

Exterior

Wheelbase	112.6"
Length	197.1"
Height	70.4"
Width – Excluding mirrors	78.9"
Width – Including mirrors	90.2"
Width – Mirrors folded	82.5"
Liftover height	31.3"

Interior

	1st/2nd/3rd Row
Head room	41.4"/40.5"/37.8"
Shoulder room	61.3"/61.0"/50.8"
Hip room	57.3"/56.7"/40.7"
Leg room	40.6"/39.8"/33.2"

Capacities (cu. ft.)

Passenger volume	151.7
Cargo volume behind 1st row	80.7
Cargo volume behind 2nd row	43.8
Cargo volume behind 3rd row ⁵	21.0
Fuel tank (gal.)	18.6
Max. towing (lbs.) ⁶	5,000

[Click here to look inside the efficient 2.0L EcoBoost engine.](#)

XLT. 2.0L EcoBoost. Sunset Metallic. Available equipment.

¹Class is Large Utilities vs. 2013 competitors. EPA-estimated rating: 20 city/28 hwy/23 combined mpg, 2.0L EcoBoost[®] FWD. Actual mileage will vary.

²Always wear your safety belt and secure children in the rear seat. ³SOS hardware may become damaged or the battery may lose power in a crash, which could prevent operation. Not all crashes will activate an airbag or safety belt pretensioner. ⁴Figures achieved using 93-octane premium unleaded fuel. ⁵Including rear seat well. ⁶Maximum weight shown is for properly equipped vehicle with required equipment and a 150-lb. driver. Weight of additional options, equipment, passengers and cargo must be deducted from this weight. For additional information, see your Ford Dealer.



Explorer

Equipment Group 100A
Includes all standard features, plus:

Mechanical

3.5L Ti-VCT V6 engine
6-speed SelectShift® automatic transmission
58-amp-hr battery
175-amp alternator
Front-wheel drive (FWD)

Seating

1st-row bucket seats with 2-way adjustable head restraints and 6-way power driver's seat with manual lumbar
Cloth seats

Interior

1st- and 2nd-row carpeted floor mats
1st- and 2nd-row door-sill scuff plates with embossed Explorer logo
AM/FM stereo/single-CD player with MP3 capability and 6 speakers
Manual day/night rearview mirror
MyFord® with 4.2" color LCD displays in instrument cluster and center stack, and media hub with auxiliary audio input jack
Power windows with one-touch-down driver's side window feature

Exterior

17" steel wheels with 5-spoke wheel covers and P245/65R17 all-season BSW tires
Black door handles, sideview mirrors, roof-rack side rails, lower bodyside cladding and wheel-lip moldings
Foundry Gray-painted grille
Remote Keyless Entry System with 2 integrated keyhead transmitter remotes

Available Options & Package

2.0L EcoBoost® I-4 engine with 6-speed automatic transmission (n/a with Intelligent 4WD, Trailer Tow Package or SelectShift automatic transmission)
All-weather floor mats
Ash cup/coin holder with lighter element
Cargo security shade
Class III Trailer Tow Package includes engine oil cooler and 7-/4-pin wiring harness (n/a with 2.0L EcoBoost engine)
Ford SYNC® voice-activated, in-vehicle connectivity system includes USB port in media hub (requires SiriusXM Satellite Radio)
Intelligent 4WD with Terrain Management System™ and Hill Descent Control™ (n/a with 2.0L EcoBoost engine)
Rear bumper protector
Rear cargo well protector
Roof-rail crossbars
SiriusXM Satellite Radio
Splash guards

XLT

Equipment Group 200A
Includes all Explorer features, plus:

Mechanical

200-amp alternator
Perimeter alarm

Seating

6-way power front-passenger seat with manual lumbar
Unique cloth seats

Interior

Illuminated visor vanity mirrors
Leather-wrapped steering wheel and shift knob
Power windows with front one-touch-up/-down feature
SiriusXM Satellite Radio with 6-month trial subscription
SYNC voice-activated, in-vehicle connectivity system (includes USB port in media hub)

Exterior

18" painted aluminum wheels with P245/60R18 all-season BSW tires
Black lower bodyside cladding with chrome accents
Chrome door handles
Fog lamps
Gloss Black heated sideview mirrors with LED turn signal indicators and security approach lamps
Reverse Sensing System
Satin Silver-finish grille
SecuriCode™ invisible keypad
Silver roof-rack side rails

Available Equipment Groups

Equipment Group 201A – Auto-dimming rearview mirror + Premium Audio System with 9 speakers + rear view camera + dual-zone electronic automatic temperature control + **Driver Connect Package** includes SYNC with MyFord Touch® voice-activated, in-vehicle connectivity system, which includes SYNC Services¹ for Traffic, Directions and Information; two 4.2" LCD configurable displays in instrument cluster; 8" LCD touch screen in center stack; and media hub with 2 USB ports, SD card reader and audio/video input jacks



17" Steel with 5-Spoke Wheel Covers
Standard: **Explorer**



18" Painted Aluminum
Standard: **XLT**



20" Polished Aluminum
Available: **XLT**

SPECIFICATIONS

Equipment Group 202A – Includes all content of 201A + **Comfort Package** includes leather-trimmed seating surfaces; 10-way power, heated driver's seat; and 6-way power, heated front-passenger seat

Available Options & Packages

2.0L EcoBoost I-4 engine with 6-speed automatic transmission (n/a with 20" wheels, Intelligent 4WD, Trailer Tow Package or SelectShift automatic transmission)
20" polished aluminum wheels (requires 201A or 202A; n/a with 2.0L EcoBoost engine)
2nd-row bucket seats (requires 202A)
2nd-row center console (requires 2nd-row bucket seats and 202A)
All-weather floor mats
Ash cup/coin holder with lighter element
BLIS® Plus Inflationable Rear Safety Belt Package includes BLIS (Blind Spot Information System) with cross-traffic alert, and inflatable rear safety belts in 2nd-row outboard seating positions (requires 201A or 202A)
Cargo security shade
Class III Trailer Tow Package includes engine oil cooler and 7-/4-pin wiring harness (n/a with 2.0L EcoBoost engine)
Dual headrest DVD by INVISION™²
Dual-panel moonroof (requires 201A or 202A)
Intelligent 4WD with Terrain Management System and Hill Descent Control (n/a with 2.0L EcoBoost engine)
Power liftgate (requires 201A or 202A)
Rear bumper protector
Rear cargo well protector
Roof-rail crossbars
Splash guards
Voice-activated Navigation System with integrated SiriusXM Traffic and Travel Link with 6-month trial subscription³ (requires 202A)
Wheel lock kit (requires 201A or 202A and 20" wheels)

XLT. Charcoal Black leather trim. Available equipment.

XLT. Heated sideview mirrors with LED turn signal indicators and security approach lamps.

XLT. Satin Silver-finish grille.

Class-exclusive MyKey.®

[Click here to learn more about the Terrain Management System.](#)

¹SYNC Services varies by trim level and model year and may require a subscription. Traffic alerts and turn-by-turn directions available in select markets. Message and data rates may apply. Ford Motor Company reserves the right to change or discontinue this product service at any time without prior notification or incurring any future obligation. ²Ford Licensed Accessory. ³SYNC Services is not available with optional Navigation System with SiriusXM Traffic and Travel Link.

Limited

SPECIFICATIONS

Equipment Group 300A

Includes all XLT features, plus:

Mechanical

72-amp-hr battery

Intelligent Access with push-button start

Remote Start System

Seating

1st-row heated bucket seats with 4-way adjustable head restraints, 10-way power driver's seat (including power lumbar and recline) with memory feature, and 6-way power front-passenger seat with manual lumbar

2nd-row 60/40 split fold-flat seat with heated outboard seats, armrest and dual cupholders with fore/aft adjustable 40 section

Leather-trimmed seating surfaces

Interior

1st- and 2nd-row door-sill scuff plates with bright Explorer logo

110-volt power outlet

Ambient lighting

Audio System from Sony® with 12 speakers and HD Radio™ Technology

Auto-dimming rearview mirror

Cargo net

Dual-zone electronic automatic temperature control

High-gloss Black center stack accents

MyFord Touch® with two 4.2" LCD configurable displays in instrument cluster; 8" LCD touch screen in center stack; and media hub with 2 USB ports, SD card reader and audio/video input jacks

Olive Ash Dark Brown wood-appearance instrument panel appliqué

Power-adjustable pedals with memory

Rear view camera

SYNC voice-activated, in-vehicle connectivity system with SYNC Services¹ for Traffic, Directions and Information

Universal garage door opener

Exterior

20" painted aluminum wheels with P255/50R20 all-season BSW tires

Body-color grille

Body-color, power-folding, heated sideview mirrors with LED turn signal indicators, security approach lamps and driver's side memory

Available Equipment Groups

Equipment Group 301A – Voice-activated Navigation System with integrated SiriusXM Traffic and Travel Link with 6-month trial subscription² + power liftgate + heated steering wheel + power-tilt/-telescoping steering column + **Luxury Seating Package** includes PowerFold® 3rd-row seat, perforated leather-trimmed seats, heated and cooled driver and front-passenger seats, and 10-way power front-passenger seat with power lumbar

Equipment Group 302A – Includes all content of 301A + active park assist + Lane-Keeping System + rain-sensing wipers + HID headlamps with auto high beams + **BLIS® Plus Inflatable Rear Safety Belt Package** includes BLIS (Blind Spot Information System) with cross-traffic alert and inflatable rear safety belts in 2nd-row outboard seating positions

Equipment Group 303A – Includes all content of 302A + 2.0L EcoBoost® I-4 engine with 6-speed automatic transmission

Available Options & Packages

2.0L EcoBoost I-4 engine with 6-speed automatic transmission (n/a with 302A, Intelligent 4WD, Trailer Tow Package or SelectShift® automatic transmission)

20" polished aluminum wheels (requires 301A, 302A or 303A)

2nd-row bucket seats

2nd-row center console (requires 2nd-row bucket seats)

Adaptive cruise control and collision warning with brake support (requires 301A, 302A or 303A)

All-weather floor mats

Ash cup/coin holder with lighter element

BLIS Plus Inflatable Rear Safety Belt Package

Cargo security shade

Class III Trailer Tow Package includes engine oil cooler and 7-/4-pin wiring harness (n/a with 2.0L EcoBoost engine)

Dual headrest DVD by INVISION™³

Dual-panel moonroof

Intelligent 4WD with Terrain Management System™ and Hill Descent Control™ (n/a with 2.0L EcoBoost engine)

Power liftgate (300A only)

Rear bumper protector

Rear cargo well protector

Roof-rail crossbars

Splash guards

Voice-activated Navigation System with integrated SiriusXM Traffic and Travel Link with 6-month trial subscription² (300A only)

Wheel lock kit



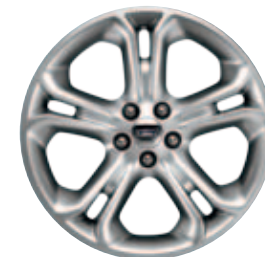
Charcoal Black leather trim with perforated inserts. Equipment Group 301A.⁴

Intelligent Access with push-button start.

Rear view camera.

Rain-sensing wipers.⁴

[Click here to see how Explorer technologies assist drivers.](#)



20" Painted Aluminum
Standard



20" Polished Aluminum
Available

¹SYNC Services varies by trim level and model year and may require a subscription. Traffic alerts and turn-by-turn directions available in select markets. Message and data rates may apply. Ford Motor Company reserves the right to change or discontinue this product service at any time without prior notification or incurring any future obligation. ²SYNC Services is not available with optional Navigation System with SiriusXM Traffic and Travel Link. ³Ford Licensed Accessory. ⁴Available feature.

Sport

SPECIFICATIONS

Equipment Group 400A

Includes all XLT Equipment Group 202A features, plus:

Mechanical

3.5L EcoBoost® V6 engine

6-speed SelectShift® automatic transmission with paddle shifters

Intelligent 4WD with Terrain Management System™ and Hill Descent Control™

Sport-tuned suspension

Seating

1st-row heated bucket seats with 4-way adjustable head restraints, 10-way power driver's seat (including power lumbar and recline) and 6-way power front-passenger seat with manual lumbar

2nd-row 60/40 split fold-flat seat with armrest and dual cupholders with fore/aft adjustable 40 section

Leather-trimmed seating surfaces

Interior

1st- and 2nd-row carpeted floor mats with unique badging

1st-row illuminated door-sill scuff plates

Audio System from Sony® with 12 speakers and HD Radio™ Technology

Cargo net

Dark Galvano instrument panel and door-trim appliqué

Exterior

20" machined aluminum wheels with painted pockets and P265/45ZR20 all-season BSW tires

Black lower bodyside cladding and roof-rack side rails

Blackout treatment for headlamps and taillamps

"EXPLORER" hood badge

"SPORT" liftgate badge

Unique Ebony Black-painted grille and liftgate appliqué

Available Equipment Group

Equipment Group 401A – Voice-activated Navigation System with integrated SiriusXM Traffic and Travel Link with 6-month trial subscription¹ + power liftgate + power-adjustable pedals with memory + power-tilt/-telescoping steering column + heated and cooled driver and front-passenger seats + driver's seat memory feature + 10-way power front-passenger seat with power lumbar + Intelligent Access with push-button start + Remote Start System + ambient lighting + universal garage door opener + 110-volt power outlet + **BLIS® Plus Inflation Rear Safety Belt Package** includes BLIS (Blind Spot Information System) with cross-traffic alert and inflatable rear safety belts in 2nd-row outboard seating positions

Available Options & Packages

2nd-row bucket seats

2nd-row center console (requires 2nd-row bucket seats)

Adaptive cruise control and collision warning with brake support (requires 401A)

All-weather floor mats

Ash cup/coin holder with lighter element

BLIS Plus Inflation Rear Safety Belt Package

Cargo security shade

Class III Trailer Tow Package includes 7-/4-pin wiring harness

Dual headrest DVD by INVISION™²

Dual-panel moonroof

P265/45ZR20 summer-only tires

Power liftgate

Rear bumper protector

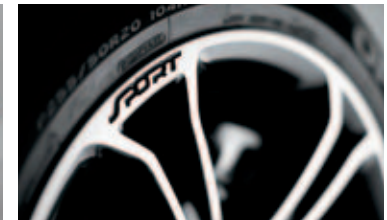
Rear cargo well protector

Roof-rail crossbars

Splash guards

Voice-activated Navigation System with integrated SiriusXM Traffic and Travel Link with 6-month trial subscription¹

Wheel lock kit



Charcoal Black leather trim with Sienna perforated inserts. Equipment Group 401A³ Available equipment.

"EXPLORER" hood badge. Ebony Black-painted grille.

Blackout-treatment taillamps. "SPORT" liftgate badge.

20" machined aluminum wheels with painted pockets.

[Click here to see what makes the 3.5L EcoBoost engine so powerful.](#) 



20" Machined Aluminum with Painted Pockets Standard

¹SYNC Services is not available with optional Navigation System with SiriusXM Traffic and Travel Link. ²Ford Licensed Accessory. ³Available feature.

Exteriors



White Platinum Metallic Tri-coat



Oxford White



Ingot Silver Metallic



Sterling Gray Metallic



Ruby Red Metallic Tinted Clearcoat



Sunset Metallic



Kodiak Brown Metallic



Deep Impact Blue Metallic

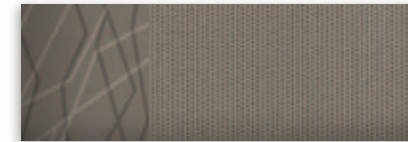


Dark Side Metallic

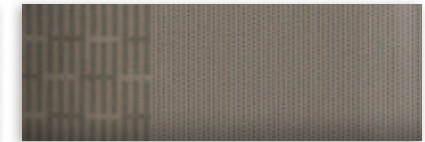


Tuxedo Black Metallic

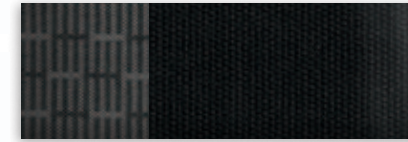
Interiors



1 Medium Light Stone Cloth



2 Medium Light Stone Cloth



3 Charcoal Black Cloth



4 Medium Light Stone Leather



5 Charcoal Black Leather



6 Medium Light Stone Leather with Perforated Inserts



7 Charcoal Black Leather with Pecan Perforated Inserts



8 Charcoal Black Leather with Perforated Inserts

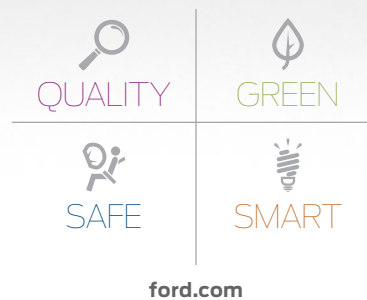


9 Charcoal Black Leather with Sienna Perforated Inserts

Exteriors	Interiors											
	Explorer	XLT			Limited			Sport				
White Platinum Metallic Tri-coat ¹		2	3	4	5	4	5	6	7	8	8	9
Oxford White	1	2	3	4	5							
Ingot Silver Metallic	1	2	3	4	5	4	5	6	8		8	9
Sterling Gray Metallic		2	3	4	5	4	5	6	7	8		
Ruby Red Metallic Tinted Clearcoat ¹	1	2	3	4	5	4	5	6	8		8	9
Sunset Metallic		2	3	4	5	4	5	6	8			
Kodiak Brown Metallic		2	3	4	5	4	5	6	7	8		
Deep Impact Blue Metallic	1	2	3	4	5	4	5	6	7	8		
Dark Side Metallic		2	3	4	5	4	5	6	8			
Tuxedo Black Metallic	1	2	3	4	5	4	5	6	7	8	8	9

4, 5 Requires Comfort Package on XLT 6, 7, 8 Requires Luxury Seating Package on Limited

¹Additional charge. Colors are representative only. See your dealer for actual paint/trim options.



New Vehicle Limited Warranty. We want your Ford Explorer ownership experience to be the best it can be. Under this warranty, your new vehicle comes with 3-year/36,000-mile bumper-to-bumper coverage, 5-year/60,000-mile Powertrain Warranty coverage, 5-year/60,000-mile safety restraint coverage, and 5-year/unlimited-mile corrosion (perforation) coverage – all with no deductible. Please ask your Ford Dealer for a copy of this limited warranty. **Roadside Assistance.** Covers your vehicle for 5 years or 60,000 miles, so you have the security of knowing that help may be only a phone call away should you run out of fuel, lock yourself out of the vehicle or need towing. Your Ford Dealer can provide complete details on all of these advantages. **Ford Credit.** Get the ride you want. Whether you plan to lease or finance, you'll find the choices that are right for you at Ford Credit. Ask your Ford Dealer for details or check us out at fordcredit.com. **Ford Extended Service Plan.** For a purchase or lease, the Ford Extended Service Plan (ESP) gives you "Peace-of-Mind" protection designed to cover key vehicle components and protect you from the cost of unexpected repairs. Ask your dealer for a Ford ESP, the only service contract backed exclusively by Ford and honored at all Ford Lincoln dealerships. **Insurance Services.** Get Ford Motor Company quality in your auto insurance. Our program offers industry-leading benefits and competitive rates. Call 1-877-367-3847, or visit us at fordvip.com for a no-obligation quote. Insurance offered by American Road Services Company (in CA, American Road Insurance Agency), a licensed agency and subsidiary of Ford Motor Company. **Genuine Ford Accessories** will be warranted for whichever provides you the greatest benefit: 12 months or 12,000 miles (whichever occurs first), or the remainder of your Bumper-to-Bumper 3-year/36,000-mile New Vehicle Limited Warranty. Ford Licensed Accessories (FLA) are warranted by the accessory manufacturer's warranty. FLA are fully designed and developed by the accessory manufacturer and have not been designed or tested to Ford Motor Company engineering requirements. Contact your Ford Dealer for details and/or a copy of all limited warranties.

Comparisons based on 2013 competitive models (class is Large Utilities), publicly available information and Ford certification data at time of release. Some features discussed may be optional. Vehicles shown may contain optional equipment. Features shown may be offered only in combination with other options or subject to additional ordering requirements or limitations. Dimensions shown may vary due to optional features and/or production variability. Following release of the PDF, certain changes in standard equipment, options and the like, or product delays may have occurred which would not be included in these pages. Your Ford Dealer is the best source for up-to-date information. Ford Division reserves the right to change product specifications at any time without incurring obligations. **HD Radio** is a proprietary trademark of iBiquity Digital Corp. **INVISION** is a trademark of Audiovox Corporation. **SiriusXM Satellite Radio, SiriusXM Traffic and Travel Link** subscriptions sold separately or as a package after trial period. See SiriusXM Customer Agreement for complete terms at siriusxm.com. Fees and programming subject to change. Sirius satellite service is available only to those at least 18 years of age in the 48 contiguous USA, DC, and Puerto Rico (with coverage limitations). Sirius, XM and all related marks and logos are trademarks of Sirius XM Radio Inc. **Sony** is a registered trademark of the Sony Corporation.

Follow Ford:



facebook.com/fordexplorer



twitter.com/FordExplorer



youtube.com/fordexplorer



gplus.to/FordMotorCompany