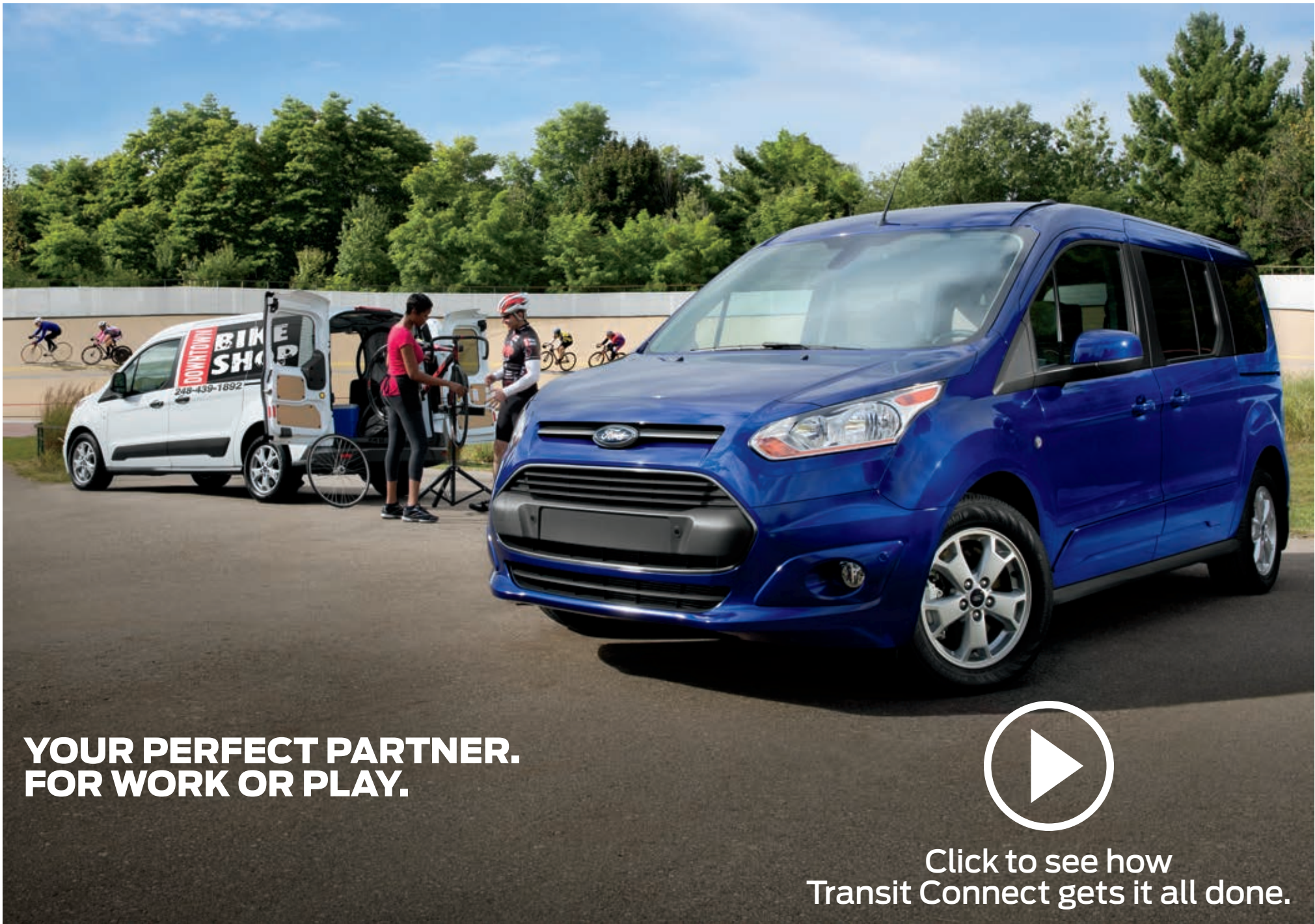




2015
TRANSIT CONNECT



SPECIFICATIONS



**YOUR PERFECT PARTNER.
FOR WORK OR PLAY.**



Click to see how
Transit Connect gets it all done.

XLT Long Wheelbase Van. Frozen White. Titanium Long Wheelbase Wagon. Deep Impact Blue. Available equipment.

2015 **TRANSIT CONNECT**
ford.com



TRANSIT CONNECT SPECIFICATIONS

STANDARD FEATURES



Van (Short Wheelbase)



Van (Long Wheelbase)



Wagon (Short Wheelbase)



Wagon (Long Wheelbase)

Mechanical

2.5L DOHC I-4 engine
6-speed SelectShift® automatic transmission
Alternator – 150-amp
Battery – 590 Cold Cranking Amps, 60-amp-hr
Battery saver
Electric power-assisted steering
Front-wheel drive (FWD)
Fuel tank – 15.8-gallon
Full-size spare tire
Hill start assist
Suspension – Front: independent MacPherson-strut; rear: twist-beam
Torque Vectoring Control

Seating

2-passenger seating (Van)
5-passenger seating (SWB Wagon)
7-passenger seating (LWB Wagon)
Front bucket seats
2nd-row 3-passenger 60/40 split folding seat (Wagon)
3rd-row 2-passenger fold-flat seats (LWB Wagon only)

Interior

12-volt powerpoint in center console (Van)
12-volt powerpoints – 2 in center console (front and rear) and 1 in rear cargo area (Wagon)
Auxiliary audio input jack
Cargo area tie-down hooks (floor-mounted)
Driver's seat back map pocket (Wagon)
Dual front map lights and rear overhead courtesy light (Wagon)
Front doors – Inner door bins with bottle recesses and illuminated window switches
Instrumentation – Speedometer (mph/kph) with tachometer and trip computer
Overhead storage shelf with grab handles (Van)

Power door locks with central locking
Premium front center closable console with 2 cupholders (Wagon)
Rear cargo area light (Van)
Rear cupholders – 2 for 2nd row and 2 for 3rd row (Wagon; 3rd-row LWB only)
Remote Keyless Entry System with 2 key fobs
Tilt/telescoping steering column
Windows – Power front with one-touch-down on driver's side (Van)

Exterior

Bodyside moldings – Gray (Van)
Cargo doors – Rear, 180° swing-out (Van; no 2nd-row glass or rear glass)
Door handles – Black (Van)
Dual sliding side doors (no glass on Van)
Easy Fuel® capless fuel filler
Grille and upper grille bar – Gray (Van)
Halogen headlamps
Headlamp bezels – Black (Van)
Rear liftgate with fixed glass (Wagon)
Wipers – Variable-intermittent front (Van and Wagon) and rear with wash feature (Wagon)

Safety & Security

AdvanceTrac® with RSC® (Roll Stability Control™) and Curve Control
Airbags¹ – Driver and front-passenger front
Airbags¹ – Front-seat side
Airbags¹ – Side-curtain for 1st row (Van)
Airbags¹ – Side-curtain for all rows (Wagon; SWB Wagon has 1st/2nd rows; LWB Wagon has 1st/2nd/3rd rows)
Brakes – Power 4-wheel disc with Anti-Lock Brake System (ABS)
SecuriLock® Passive Anti-Theft System
Tire Pressure Monitoring System (excludes spare)

DIMENSIONS

	Van SWB 2-seater	Van LWB 2-seater	Wagon SWB 5-seater	Wagon LWB 7-seater
Exterior				
Wheelbase	104.8"	120.6"	104.8"	120.6"
Length	173.9"	189.7"	173.9"	189.7"
Height	72.5"	72.8"	72.6"	72.0"
Width – Excluding mirrors	72.2"	72.2"	72.2"	72.2"
Width – Including mirrors	84.1"	84.1"	84.1"	84.1"
Width – Mirrors folded	77.4"	77.4"	77.4"	77.4"
Track – Front	61.4"	61.4"	61.4"	61.4"
Track – Rear	61.7"	61.7"	61.7"	61.7"
Overhang – Front	34.6"	34.6"	34.6"	34.6"
Overhang – Rear	34.6"	34.6"	34.6"	34.6"

Interior (1st/2nd/3rd row)

Head room	46.9"/–/–	46.9"/–/–	46.9"/45.1"/–	46.9"/45.1"/41.3"
Shoulder room	57.7"/–/–	57.7"/–/–	57.7"/58.5"/–	57.7"/58.5"/56.3"
Hip room	54.2"/–/–	54.2"/–/–	54.2"/58.3"/–	54.2"/58.2"/47.0"
Leg room	41.5"/–/–	41.5"/–/–	41.5"/37.6"/–	41.5"/37.6"/35.0"

Cargo Area

Length – Front at floor	71.5"	87.3"	70.9"	85.8"
Length – Front at belt	61.3"	77.1"	60.9"	76.7"
Length with front-passenger seat folded (Van only)	101.1"	116.9"	–	–
Load height (curb)	23.4"	23.7"	23.5"	22.7"
Side cargo door opening height	48.3"	48.3"	44.9"	44.9"
Side cargo door opening width	24.1"	33.0"	24.1"	33.0"
Rear cargo door opening height	44.0"	44.0"	45.1"	45.1"
Rear cargo door opening width	49.3"	49.3"	47.0"	47.0"
Width between wheelhouses	48.3"	48.3"	46.9"	46.9"
Height max.	49.7"	49.7"	49.0"	42.2"

Capacities

Passenger volume (cu. ft.)	63.2	63.2	120.7	166.0
Max. towing (lbs.)	2,000	2,000	2,000	2,000
Max. GVWR (lbs.)	5,020	5,270	4,820	5,280
Max. payload (lbs.)	1,470	1,620	1,130	1,270

Cargo Volume (cu. ft.)

Behind 1st row (with 2nd-row seat folded)	–	–	77.1	104.2
Behind 2nd row	–	–	46.9	58.9
Behind 3rd row (with 3rd-row in design position)	–	–	–	15.7
Behind 3rd row (with 3rd-row seat moved to most forward position)	–	–	–	19.8
Behind 1st row (Van only; no 2nd- or 3rd-row seats)	103.9	128.6	–	–
Maximum with front-passenger seat folded (Van only; without bulkhead)	124.3	149.0	–	–

Dimensions may vary by trim level. Cargo and load capacity limited by weight and weight distribution. ¹Always wear your safety belt, secure children in the rear seat and follow airbag warning label instructions. ²Using 93-octane fuel.

CONFIGURATIONS



Van (Short Wheelbase) – Available as XL, XLT



Van (Long Wheelbase) – Available as XL, XLT



Wagon (Short Wheelbase) – Available as XLT



Wagon (Long Wheelbase) – Available as XL, XLT, Titanium

ENGINES/ EPA-ESTIMATED RATINGS

2.5L DOHC I-4

169 hp @ 6,000 rpm
171 lb.-ft. of torque @ 4,500 rpm
6-speed SelectShift automatic transmission
20 city/28 hwy/23 combined mpg (Wagon)
21 city/29 hwy/24 combined mpg (Van)

1.6L EcoBoost® I-4

178 hp @ 5,700 rpm²
184 lb.-ft. of torque @ 2,500 rpm
6-speed SelectShift automatic transmission
22 city/30 hwy/25 combined mpg (SWB Wagon)
22 city/30 hwy/25 combined mpg (Van)

2015 TRANSIT CONNECT
ford.com



XL



16" Steel with Styled Wheel Cover Standard

XL Wagon. Charcoal Black cloth.¹ Available equipment.

6-speed SelectShift[®] automatic transmission.

6-way manual driver's seat with recline.¹

Driver's seat manual lumbar.¹

XL VAN

Includes all standard features, plus:

Configurations

Short Wheelbase – 2-passenger

Long Wheelbase – 2-passenger

Mechanical

16" steel wheels with styled wheel covers and 215/55R16 all-season tires

Seating

4-way manual driver's seat with manual recline
4-way manual front-passenger seat with folding back and manual recline
Pewter vinyl seating surfaces

Interior

AM/FM stereo with 2 speakers
Air conditioning with manual front controls
Flooring – Vinyl front; molded-in vinyl liner in rear cargo area
Front center console with 2 cupholders

Exterior

Bumpers – Gray front and rear
Fog lamp bezels – Black
Mirrors – Black sideview, manually adjustable glass, manual folding with integrated blind spot mirrors
Rear bumper end caps – Gray

Available Options

Mechanical

1.6L EcoBoost[®] engine with Active Grille Shutters

Seating

6-way manual driver's seat with manual lumbar and 4-way manual passenger seat with fold-flat back and manual recline (also available without fold-flat passenger seat)

Interior

Rear cargo area light – LED

Exterior

Cargo doors – Rear, 180° swing-out with fixed glass
Mirrors – Large sideview (recommended for towing; requires power-adjustable, heated mirrors)
Rear liftgate with fixed glass
Windows – Fixed 2nd-row driver and passenger side (requires fixed rear glass)
Windows – Fixed 2nd-row passenger side

XL WAGON

Includes select XL Van features, plus:

Configurations

Long Wheelbase – 7-passenger

Seating

6-way manual driver's seat with manual lumbar/recline

Interior

AM/FM stereo with 4 speakers (2 front, 2 rear)
Air conditioning with manual front and rear controls – Includes rear-compartment air conditioning and heater with manual controls
Day/night rearview mirror
Flooring – Vinyl in front, 2nd and 3rd rows, and rear cargo area
Overhead storage shelf with grab handles
Windows – Power front with one-touch-up/down on driver's side

Exterior

Bodyside moldings – Gray
Door handles – Black
Grille and upper grille bar – Gray
Headlamp bezels – Black
Rear liftgate with fixed glass (includes power 2nd-row windows and fixed 3rd-row glass)

Available Package

Taxi Package includes AM/FM stereo with 4 speakers (2 front/2 rear); manual electric air conditioning; power front windows with one-touch-up/-down; power-adjustable, heated, manual-folding sideview mirrors; recessed 2nd-row seat; 180° swing-out rear cargo doors (includes one-touch-up/-down power 2nd-row windows and fixed 3rd-row/rear-door glass); rear-window defroster; 4 manual keys; and Taxi upfit wiring harness (deletes 3rd-row seating and SecuriLock[®] Passive Anti-Theft System)

Available Options

Interior

Cargo net kit – Vertical (divides seat from cargo area)
Forward Sensing System (includes Reverse Sensing System; requires cornering fog lamps)
Overhead console – Aircraft-style, mid-vehicle (n/a with Taxi Package)

Exterior

Cargo doors – Rear, 180° swing-out (includes power 2nd-row windows)
Cornering fog lamps (n/a with Taxi Package)
Roof wiring hole (only available with Taxi Package)

XL VAN & WAGON

Available Packages

CNG/LPG Gaseous Engine Prep Package (2.5L DOHC I-4 engine)

Trailer Tow Package includes Class I trailer hitch receiver, trailer module, 4-pin connector and trailer sway control (n/a with Taxi Package)

Available Options

Mechanical

Engine block heater
Upfitter wiring harness (LWB only; n/a with Taxi Package)

Seating

Charcoal Black cloth seating surfaces

Interior

AM/FM stereo/single-CD player
AM/FM stereo/single-CD player with rear view camera
AM/FM stereo/single-CD player with Ford SYNC[®]
AM/FM stereo/single-CD player with SYNC and rear view camera (requires cruise control)
Cruise control
Key fobs (2 additional; n/a with Taxi Package)
MyKey[®] (requires cruise control; n/a with Taxi Package)
Perimeter alarm (n/a with Taxi Package)
Reverse Sensing System (included with Forward Sensing System on Wagon)
Smoker's Pack – Includes 1 ash cup (n/a with Taxi Package)

Exterior

Crew Chief[™] powered by Telogis^{®2} – Fleet-tracking system (includes 1 year of subscription service)
Daytime running lamps
Mirrors – Black sideview, power-adjustable glass, heated, manual folding with integrated blind spot mirrors (included with Quickclear[™] electric windshield defroster)
Privacy glass from B-pillar back
Quickclear electric windshield defroster – Includes heated washer jets, and power-adjustable, heated sideview mirrors (n/a on Taxi Package)
Rear-window defroster (requires fixed rear glass; included with Taxi Package)
Splash guards (front and rear)

Available Fleet-Only Options

3rd-row seats delete (Wagon)
Speed limitation – 65-mph governed top speed (n/a with MyKey)
Speed limitation – 75-mph governed top speed (n/a with MyKey)

¹Available feature. ²Ford Licensed Accessory.



XLT



XLT Wagon, Medium Stone cloth. Available equipment.

Integrated blind spot mirror.

SYNC steering wheel controls.¹

USB port in front center console.¹



16" Steel with Styled Wheel Cover Standard



16" Aluminum with Locking Wheel Lugs Optional



17" Aluminum with Locking Wheel Lugs Optional on Wagon

XLT VAN

Includes select XL Van features, plus:

Configurations

Short Wheelbase – 2-passenger

Long Wheelbase – 2-passenger

Mechanical

16" steel wheels with styled wheel covers and 215/55R16 all-season tires

Seating

6-way manual driver's seat with manual lumbar/recline

Charcoal Black or Medium Stone cloth seating surfaces

Interior

4.2" color LCD multifunctional display

12-volt powerpoint in rear cargo area

AM/FM stereo/single-CD player

Cruise control

Door handles – Satin-chrome

Driver and front-passenger sun visors with vanity mirrors; driver's side includes ticket strap

Dual front map lights

Flooring – Carpet in front with carpeted floor mats; molded-in vinyl liner in rear cargo area

In-cluster message center

MyKey[®]

Premium front center closable console with 2 cupholders

Steering wheel – Satin-chrome accents

Exterior

Bumpers – Body-color front, gray rear

Fog lamps with body-color bezels

Mirrors – Black sideview, power-adjustable glass, heated, manual folding with integrated blind spot mirrors

Privacy glass from B-pillar back (included when ordered with 2nd-row glass or fixed rear glass)

Rear bumper end caps – Body-color

Available Package

CNG/LPG Gaseous Engine Prep Package (2.5L DOHC I-4 engine)

Available Options

Seating

6-way manual driver's seat with manual lumbar and 4-way manual passenger seat (non-fold-flat back) with manual recline

Interior

AM/FM stereo/single-CD player with Ford SYNC[®]

AM/FM stereo/single-CD player with rear view camera

AM/FM stereo/single-CD player with SYNC, SiriusXM[®] with 6-month service trial, and HD Radio[™] Technology

Flooring – All-weather floor mats (front)

Rear cargo area light – LED

Exterior

Cargo doors – Rear, 180° swing-out with fixed glass

Mirrors – Large sideview (recommended for towing)

Rear liftgate with fixed glass

Rear-window defroster (requires fixed rear glass)

Windows – Fixed 2nd-row driver and passenger side (requires fixed rear glass)

Windows – Fixed 2nd-row passenger side

XLT WAGON

Includes select XLT Van features, plus:

Configurations

Short Wheelbase – 5-passenger

Long Wheelbase – 7-passenger

Seating

2nd-row 60/40 split-fold seat with folding armrest (includes 2 cupholders)

2nd-row 60/40 removable fold-and-tumble seat (SWB only)

Interior

AM/FM stereo/single-CD player with 4 speakers and rear view camera

Flooring – Carpet in front (includes carpeted floor mats), 2nd row, 3rd row (LWB), and rear cargo area

In-floor storage (behind front-passenger seat)

Overhead storage shelf with grab handles, sunglasses holder and child observation mirror

Windows – Power front with one-touch-up/-down

Exterior

Acoustic-laminate windshield

Body-side moldings – Body-color

Bumpers – Body-color

Door handles – Body-color

Rear liftgate with fixed glass (includes one-touch-up/-down power 2nd-row windows and fixed 3rd-row glass)

Rear-window defroster

Available Options

Mechanical

17" aluminum wheels with locking wheel lugs

Seating

6-way power driver's seat with power recline and 4-way manual front-passenger seat with manual recline (both seats include manual lumbar and seat back map pockets; requires Medium Stone leather-trimmed seating surfaces)

Medium Stone leather-trimmed seating surfaces

Interior

Cargo net kit – Vertical (divides seat from cargo area)

Flooring – All-weather floor mats (1st and 2nd row)

Flooring – Black vinyl cargo area (includes 3rd row on LWB)

Flooring – 2nd-row carpeted floor mats (2-piece kit)

Overhead console – Aircraft-style, mid-vehicle (n/a with panoramic fixed-glass Vista Roof[®])

Overhead console – Aircraft-style, rear (SWB; requires panoramic fixed-glass Vista Roof)

Panoramic fixed-glass Vista Roof with power sunshade (includes roof rails; n/a with 180° swing-out rear cargo doors)

Rear cargo area cover (SWB; requires rear liftgate)

Exterior

Cargo doors – Rear, 180° swing-out (includes one-touch-up/-down power 2nd-row windows and fixed 3rd-row/rear glass)

Mirrors – Black sideview, power-adjustable glass, heated, power-folding with integrated blind spot mirrors

Roof rack with crossbars

Roof rails

XLT VAN & WAGON

Available Package

Trailer Tow Package includes Class I trailer hitch receiver, trailer module, 4-pin connector and trailer sway control

Available Options

Mechanical

1.6L EcoBoost[®] engine with Active Grille Shutters (n/a with LWB Wagon)

Engine block heater

Upfitter wiring harness (LWB only)

16" aluminum wheels with locking wheel lugs

Interior

AM/FM stereo/single-CD player with SYNC and rear view camera

AM/FM stereo/single-CD player with SYNC, SiriusXM with 6-month service trial, HD Radio Technology and rear view camera

MyFord Touch[®] with 6.5" color LCD touch screen, media hub and rear view camera – Includes AM/FM stereo/single-CD player, Navigation System, SYNC, SiriusXM Traffic and Travel Link[®] with 5-year trial subscription, and HD Radio Technology

Dual-zone electronic automatic temperature control

Flooring – Black vinyl 1st and 2nd rows (requires vinyl cargo area; 2nd row on Wagon only)

Forward Sensing System

Key fobs (2 additional)

Perimeter alarm

Remote Start System

Reverse Sensing System (included with Forward Sensing System)

Smoker's Pack – Includes 1 ash cup

Exterior

Automatic headlamps – Wiper-activated with follow-me-home lighting (requires SYNC; Van requires Quickclear[™] electric windshield defroster)

Cornering fog lamps

Crew Chief[™] powered by Telogis^{®2} – Fleet-tracking system (includes 1 year of subscription service)

Daytime running lamps

Quickclear electric windshield defroster – Includes heated washer jets, and power-adjustable, heated sideview mirrors

Splash guards (front and rear)

Available Fleet-Only Option

3rd-row seats delete (LWB Wagon)

¹Available feature. ²Ford Licensed Accessory.



TITANIUM WAGON

Includes XLT LWB Wagon features, plus:

Configurations

Long Wheelbase – 7-passenger

Mechanical

16" aluminum wheels with locking wheel lugs and 215/55R16 tires

Seating

6-way power driver's seat with power recline and 4-way manual front-passenger seat with manual recline (both seats include heat, manual lumbar and seat back map pockets)

Medium Stone leather-trimmed seating surfaces

Interior

AM/FM stereo/single-CD player with Ford SYNC®, rear view camera and 6 speakers (4 in front/2 in rear)

Auto-dimming rearview mirror

Compass display

Dual-zone electronic automatic temperature control

Flooring – 1st and 2nd-row carpeted floor mats

Leather-wrapped steering wheel and shifter knob

Locking and illuminated glove compartment

Exterior

Automatic headlamps with chrome bezels – Wiper-activated with follow-me-home lighting

Cornering fog lamps

Grille – Gray with chrome surround and chrome upper bar

Mirrors – Body-color sideview, power-adjustable glass, heated, power-folding with integrated blind spot mirrors

Wipers – Rain-sensing front windshield

Available Package

Trailer Tow Package includes Class I trailer hitch receiver, trailer module, 4-pin connector and trailer sway control

Available Options

Mechanical

Engine block heater

Upfitter wiring harness

17" aluminum wheels with locking wheel lugs

Interior

AM/FM stereo/single-CD player with SYNC, SiriusXM® with 6-month service trial, HD Radio™ Technology and rear view camera

MyFord Touch® with 6.5" color LCD touch screen, media hub and rear view camera – Includes AM/FM stereo/single-CD player, Navigation System, SYNC, SiriusXM Traffic and Travel Link® with 5-year trial subscription, and HD Radio Technology

Cargo net kit – Vertical (divides seat from cargo area)

Flooring – All-weather floor mats (1st and 2nd row)

Forward Sensing System

Key fobs (2 additional)

Overhead console – Aircraft-style, mid-vehicle (n/a with panoramic fixed-glass Vista Roof®)

Panoramic fixed-glass Vista Roof with power sunshade (includes roof rails; roof rails not included if roof rack is ordered)

Perimeter alarm

Remote Start System

Reverse Sensing System (included with Forward Sensing System)

Smoker's Pack – Includes 1 ash cup

Exterior

Crew Chief™ powered by Telogis®¹ – Fleet-tracking system (includes 1 year of subscription service)

Daytime running lamps

Quickclear™ electric windshield defroster – Includes heated washer jets, and power-adjustable, heated sideview mirrors

Roof rack with crossbars

Roof rails

Splash guards (front and rear)

Available Fleet-Only Option

3rd-row seats delete



Titanium Wagon. Medium Stone leather trim. Available equipment.

Aircraft-style, mid-vehicle overhead console with storage.²

In-floor storage compartment behind front-passenger seat.

Heated front seats.



16" Aluminum with Locking Wheel Lugs Standard



17" Aluminum with Locking Wheel Lugs Optional

¹Ford Licensed Accessory. ²Available feature.

EXTERIORS



Frozen White



Silver



School Bus Yellow (Taxi Package)



Race Red



Deep Impact Blue



Dark Blue



Tectonic Silver



Solar

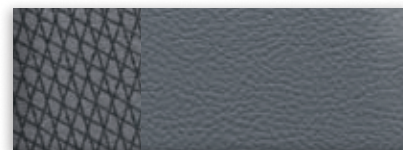


Magnetic

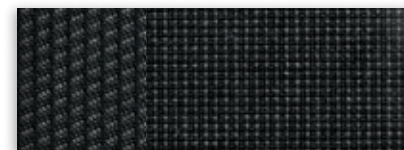


Panther Black

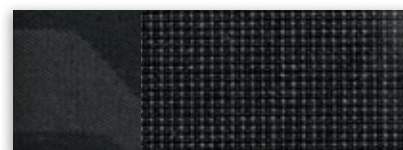
INTERIORS



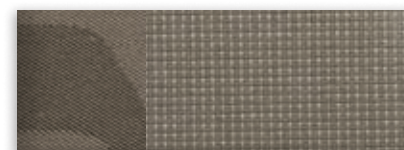
1 Pewter Vinyl



2 Charcoal Black Cloth



3 Charcoal Black Cloth



4 Medium Stone Cloth



5 Medium Stone Leather¹

Bring these colors to life



Exteriors	XL	Interiors	TITANIUM
		XLT	
Frozen White	1 2	3 4 5	5
Silver	1 2	3 4 5	5
School Bus Yellow ²	1 2		
Race Red	1 2	3 4 5	5
Deep Impact Blue ¹	1 2	3 4 5	5
Dark Blue	1 2	3 4 5	5
Tectonic Silver ¹	1 2	3 4 5	5
Solar ¹	1 2	3 4 5	5
Magnetic ¹	1 2	3 4 5	5
Panther Black	1 2	3 4 5	5

¹Available only on Wagon. ²Available only on Wagon with Taxi Package. Colors are representative only. See your dealer for actual paint/trim options.





XLT Wagon (Long Wheelbase) in Tectonic Silver accessorized with Aeroskin™ hood protector by Lund®¹, keyless entry keypad, side window deflectors, molded splash guards, 16" aluminum wheels, and roof crossbars and cargo box by THULE®¹

XLT Van (Long Wheelbase) in Frozen White accessorized with Ford Commercial Graphics by 3M Original Wraps,¹ trailer towing accessories, side window deflectors, front and rear molded splash guards, and 16" aluminum wheels

Portable DVD rear-seat entertainment system by NextBase®¹

Trailer hitch assembly

Remote start systems

All-weather floor mats

Exterior

- Racks and carriers¹
- Rear bumper protector
- Splash guards
- Trailer towing accessories

Interior

- Ash cup/coin holders
- Cargo organizers and protectors
- Carpeted floor mats
- Interior light kit
- Interior rear window grilles
- Tablet cradle¹

Electronics

- Auto-dimming rearview mirror
- Crew Chief™ powered by Telogis®¹
- Vehicle Security System
- Warning sensor systems¹

Learn more about
your Transit Connect



2015
TRANSIT CONNECT



ford.com

New Vehicle Limited Warranty. We want your Ford Transit Connect ownership experience to be the best it can be. Under this warranty, your new vehicle comes with 3-year/36,000-mile bumper-to-bumper coverage, 5-year/60,000-mile Powertrain Warranty coverage, 5-year/60,000-mile safety restraint coverage, and 5-year/unlimited-mile corrosion (perforation) coverage – all with no deductible. Please ask your Ford Dealer for a copy of this limited warranty.

Roadside Assistance. Covers your vehicle for 5 years or 60,000 miles, so you have the security of knowing that help may be only a phone call away should you run out of fuel, lock yourself out of the vehicle or need towing. Your Ford Dealer can provide complete details on all of these advantages.

Ford Credit. Get the ride you want. Whether you plan to lease or finance, you'll find the choices that are right for you at Ford Credit. Ask your Ford Dealer for details or check us out at fordcredit.com.

Ford Extended Service Plan. For a purchase or lease, the Ford Extended Service Plan (ESP) gives you peace-of-mind protection designed to cover key vehicle components and protect you from the cost of unexpected repairs. Ask your dealer for a Ford ESP, the only service contract backed exclusively by Ford and honored at all Ford Lincoln dealerships.

Insurance Services. Get Ford Motor Company quality in your auto insurance. Our program offers industry-leading benefits and competitive rates. Call 1-877-367-3847, or visit us at fordvip.com for a no-obligation quote. Insurance offered by American Road Services Company (in CA, American Road Insurance Agency), a licensed agency and subsidiary of Ford Motor Company.

Ford Original Accessories will be warranted for whichever provides you the greatest benefit: 24 months/unlimited mileage, or the remainder of your Bumper-to-Bumper 3-year/36,000-mile New Vehicle Limited Warranty. Ford Licensed Accessories (FLA) are warranted by the accessory manufacturer's warranty. FLA are designed and developed by the accessory manufacturer and have not been designed or tested to Ford Motor Company engineering requirements. Contact your Ford Dealer for details and/or a copy of all limited warranties.

Comparisons based on competitive models (class is Small Vans), publicly available information and Ford certification data at time of release. Vehicles may be shown with optional equipment. Features may be offered only in combination with other options or subject to additional ordering requirements/limitations. Dimensions shown may vary due to optional features and/or production variability. Information is provided on an "as is" basis and could include technical, typographical or other errors. Ford makes no warranties, representations, or guarantees of any kind, express or implied, including but not limited to, accuracy, currency, or completeness, the operation of the information, materials, content, availability, and products. Ford reserves the right to change product specifications, pricing and equipment at any time without incurring obligations. Your Ford Dealer is the best source of the most up-to-date information on Ford vehicles.

After trial period expires, SiriusXM Satellite Radio, SiriusXM Traffic and Travel Link subscriptions are sold separately or as a package and are continuous until you call SiriusXM to cancel. See SiriusXM Customer Agreement for complete terms at www.siriusxm.com. SiriusXM Traffic and Travel Link available in select markets. For more information, see www.siriusxm.com/travellink or www.siriusxm.com/traffic. Sirius, XM and all related marks and logos are trademarks of Sirius XM Radio Inc. HD Radio is a proprietary trademark of iBiquity Digital Corp. Microsoft is a registered trademark of Microsoft Corporation. THULE is a registered trademark of Thule Sweden AB.

Follow Ford:

