



SANTA FE
SPORT
2016



NEW THINKING. NEW POSSIBILITIES.

Status quo is nothing more than a starting point for our research and development. Through new thinking we continue to uncover new territories in innovation, engineering and design. A vehicle is no longer simply a means of transportation; it is an extension of you. By questioning and not simply accepting convention, we continue to push the boundaries to provide new possibilities and experiences that go beyond your expectations.

This is the [H-Factor](#).



BEAUTIFULLY BOLD

The 2016 Santa Fe Sport is the perfect blend of sophistication and agility. Dynamic styling is matched with a spacious interior that is filled with upscale amenities and smart design features, including an available Smart Power Liftgate. Whether you choose the 2.4L Gasoline Direct Injection (GDI) engine or the available 2.0L Twin-Scroll Turbocharged-GDI engine, adventure awaits you in the award-winning Santa Fe Sport.



RUGGED ELEGANCE

A sleek belt line and powerful wheel arches drive the bold and dynamic profile of the 2016 Santa Fe Sport. An available panoramic sunroof provides exceptional openness and luxury. The sporty yet sophisticated appearance is complemented by an available twin-tip chrome exhaust.



FITS YOUR LIFESTYLE

The spacious interior of the 2016 Santa Fe Sport offers exceptional styling with an array of upscale amenities such as an available heated steering wheel and premium 10-speaker Infinity® audio system. But there is more to this stylish SUV than just providing a luxurious driving environment. The 2016 Santa Fe Sport is also designed to provide the luxury of versatility. For example, rear seating reclines for comfort, folds 40/20/40 for flexible storage, and is available with a second row sliding feature – making it possible to bring a child seat closer to front passengers. The smart design also provides an additional 51L of cargo storage under the cargo floor.





EFFICIENTLY POWERFUL

The 2016 Santa Fe Sport gives you the choice between two powerful and fuel-efficient engines. First, the 2.4L Gasoline Direct Injection (GDI) engine with 190 horsepower and 181 lb-ft of torque. Second, the 2.0L Twin-Scroll Turbocharged-GDI engine which delivers a powerful 265 horsepower, 269 lb-ft of torque and 3,500 lbs towing capacity. Both are paired with a standard 6-speed automatic transmission with SHIFTRONIC® manual shift mode and feature Hyundai's Active ECO System for smarter accelerations to help improve fuel efficiency even further.

SAFETY ALL AROUND

Equipped with a comprehensive package of top safety features including 7-standard airbags¹, the 2016 Santa Fe Sport offers an exceptional level of protection. Active safety systems include Blind Spot Detection³ (BSD) (standard on 2.4L Luxury and 2.0T Limited models) to help with safe lane changes and standard ABS brakes with Electronic Stability Control (ESC), Traction Control System (TCS)² and Brake Assist (BA). Drive with confidence knowing that the Santa Fe Sport is equipped with standard Hillstart Assist Control (HAC) and Downhill Brake Control (DBC) technologies to help maintain control on steep roads.



2016

SANTA FE SPORT FEATURES



PANORAMIC SUNROOF

An available panoramic glass sunroof spans over front and rear seat passengers for improved air circulation, enhanced cabin illumination and a generous view of the sky. Additionally, all models are equipped with standard roof rack side rails.



ADVANCED ALL-WHEEL DRIVE SYSTEM

The 2016 Santa Fe Sport has been engineered with an available, advanced All-Wheel Drive system which features Active Cornering Control. Managing vehicle acceleration by adjusting the inside rear wheel speed during a turn, Active Cornering Control helps improve vehicle stability and helps to reduce over/under-steer in adverse driving conditions.



COMFORT AND CONTROL AT HAND

Your sense of comfort and control is enhanced by a steering wheel that provides easy access to an array of standard features such as Bluetooth®, audio and cruise mounted controls, and tilt-and-telescopic functionality. You can also warm your hands at the touch of a button, with the available heated steering wheel.



HEATED AND VENTILATED SEATS

Adapt to the cold weather with the standard driver and front passenger heated seats. Receiving equal attention, your rear seat passengers will thank you for the luxury of the available heated rear seats. And just in case your journeys take you somewhere warm, the 2016 Santa Fe Sport also offers available ventilated front seats.



REARVIEW CAMERA

This available feature helps you see what is behind the vehicle when reversing on either the 4.3-inch touch-screen display or 8-inch touch-screen navigation system with helpful on-screen parking guides.



8-INCH TOUCH-SCREEN NAVIGATION SYSTEM

An impressive 8-inch touch-screen navigation system (available on 2.0T Limited models) makes it incredibly easy to navigate so you can maintain your focus on the road.



SMART POWER LIFTGATE

Using proximity key technology, the available Smart Power Liftgate senses your presence when you stand within three feet of the trunk for three seconds. With no extra movement or motion, the trunk automatically opens to welcome your two hands worth of cargo, effortlessly.



10-SPEAKER INFINITY® AUDIO SYSTEM

The available Infinity® 10-speaker audio system produces true to life acoustics through 10 strategically placed speakers, providing equal listening pleasure to all occupants in the Santa Fe Sport.



BLIND SPOT DETECTION SYSTEM³ AND REAR CROSS-TRAFFIC ALERT⁴

The available Blind Spot Detection³ system uses radar to detect when a vehicle is in the driver's blind spot and provides both an audible and a visual alert to help keep you aware as you move down the road. When reverse gear is selected, Rear Cross-Traffic Alert⁴ helps identify and warn the driver of vehicles approaching from the side, even before they come into view of the available rearview camera.



DRIVER SELECTABLE STEERING

With three operating modes – Comfort, Normal and Sport – this innovative system allows drivers to adapt steering characteristics to varying driving preferences and road conditions.

5

5-YEAR/100,000 KM
**COMPREHENSIVE LIMITED
WARRANTY***

5-YEAR/100,000 KM
POWERTRAIN WARRANTY

5-YEAR/100,000 KM
EMISSION WARRANTY

5-YEAR/UNLIMITED KM
**ROADSIDE ASSISTANCE
PROGRAM****



You will see that a number of our vehicles have been awarded with multiple awards from the most reputable third party organizations, so you can take their word when it comes to the quality, design and safety of our vehicles. This quality is equally matched by the quality of our warranty. We stand confidently behind our products to give you the ultimate peace of mind with a 5-year/100,000 km comprehensive limited warranty, one of the best-backed warranties in Canada. We also provide a 5-year/unlimited km Roadside Assistance Program** featuring flat tire changing, lockout service and more. Just one toll-free call away, 24 hours a day.

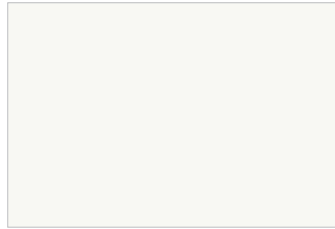
THERE'S NO SUBSTITUTE FOR
PEACE OF MIND

COLOURS

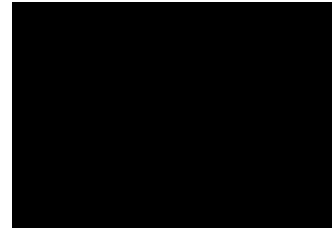
EXTERIOR



SPARKLING SILVER



FROST WHITE



TWILIGHT BLACK



SERRANO RED



TITANIUM SILVER

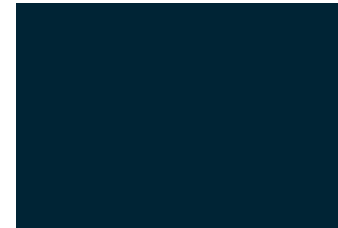


PLATINUM GRAPHITE



CANYON COPPER

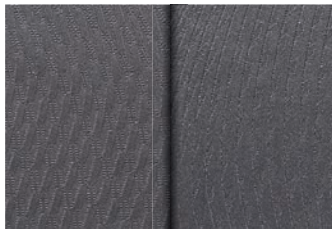
Available on 2.4L Luxury, 2.0T SE and 2.0T Limited models only.



MARLIN BLUE

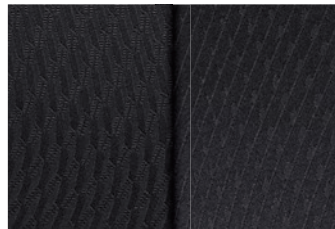
Available on 2.4L Premium and 2.0T Premium models only.

INTERIOR



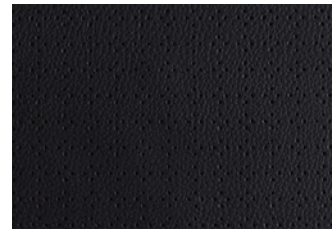
GREY CLOTH

Available on 2.4L FWD model only.



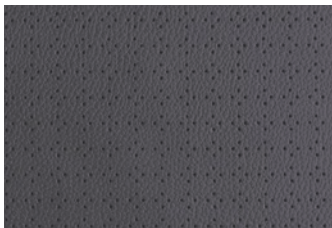
BLACK CLOTH

Available on 2.4L Premium and 2.0T Premium models only.



BLACK LEATHER

Available on 2.4L Luxury, 2.0T SE and 2.0T Limited models only.



GREY LEATHER

Available on 2.4L Luxury and 2.0T Limited models only (Twilight Black and Titanium Silver only).



BEIGE LEATHER

Available on 2.4L Luxury and 2.0T Limited models only (Frost White, Twilight Black, Serrano Red only).

WHEELS



**2.4L FWD,
2.4L Premium,
2.4L Luxury and
2.0T Premium
17-inch Wheel**



**2.0T SE and
2.0T Limited
19-inch Wheel**

Choice of interior colour depends upon model and/or exterior colour selection. Due to the print production process, the colours shown throughout this brochure may vary slightly from the actual hue. Textures may not be exactly as shown. Visit hyundaicanada.com or see your dealer for details.

CROSS RAILS

This durable, quick-locking cross rail system lets you transport cargo easily, without sacrificing interior room.



CARGO TRAY

Add years to the interior of your Hyundai by protecting it from spills and messy loads with a durable, custom-fit cargo tray.



HYUNDAI WARM UP SYSTEM

Keep the inside of your car warm in winter months without using a drop of fuel! The Hyundai Warm Up System includes an interior cabin heater, block heater, a fully programmable display unit as well as an integrated battery charger.



PLASTIC HOOD PROTECTOR

Help prevent dents and scratches caused by road and vehicle debris with an attractive plastic hood protector.



TRAILER HITCH KIT

Designed to meet your towing needs, a Hyundai hitch can accommodate a wide variety of hitch-mounted accessories. Kit includes trailer hitch, ball mount and end cap (Chrome ball shown not included).



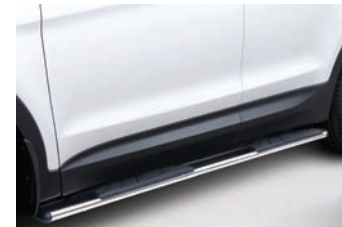
SIDE VISORS

Complement your vehicle with a sleek and durable set of side visors that will help reduce glare while providing you with fresh air. Custom made for your vehicle using high quality reinforced tinted acrylic plastic, these visors will look good on your vehicle for years to come.



PREMIUM ALL WEATHER FLOOR LINERS

Premium all weather floor liners were designed to cover the interior carpet providing maximum protection against the elements that other mats cannot offer. Their unique and durable design features a non-slip surface for added comfort and a long lasting premium look. Remove carpet mats prior to installation.



SIDE STEPS – OVAL TUBES

These oval side steps were designed to complement the design nature of your Hyundai. They are as attractive as they are functional. Finished in stainless steel, these oval side steps include step pads for secure footing and will look good for years to come.

ACCESSORIES

SANTA FE SPORT SPECIFICATIONS

2.4L FWD STANDARD EQUIPMENT INCLUDES:	
2.4L GDI 190 hp, 4-cylinder engine with Dual Continuously Variable Valve Timing (D-CVVT)	Bluetooth® hands-free phone system with voice recognition
17" Euroflange alloy wheels	Chrome door handles
6-speed automatic transmission with SHIFTRONIC® manual mode	Driver Selectable Steering Mode (DSSM)
Active ECO System	Fog lights
4-wheel disc brakes	Heated front seats
Airbags ¹ (7): Dual front, front seat-mounted side impact, roof-mounted side-curtain with roll-over sensor and driver knee airbag	Heated, power-adjustable side mirrors
4-way power adjustable drivers seat with 2-way power lumbar support and adjustable head restraints	Power windows with driver's auto-up/down with pinch protection
40/20/40 split-folding second-row seats	Remote keyless entry with alarm
Air conditioning with manual temperature control and second row vents	Roof side rails
AM/FM/SiriusXM™/CD/MP3 audio system with LCD screen and 6 speakers	Steering wheel-mounted telephone and audio controls
	Tilt-and-telescopic steering wheel
	Trailer pre-wiring
	Windshield wiper de-icer

2.4L PREMIUM INCLUDES 2.4L FWD STANDARD EQUIPMENT PLUS:	
12-way power adjustable driver's seat with 4-way power lumbar support and adjustable head restraint	Heated rear seats
Automatic [on/off] headlights	Leather-wrapped steering wheel and gearshift knob
Dual-zone automatic temperature control with CleanAir Ionizer	Manual rear side window sunshades
Heated steering wheel	Rear parking assistance sensors
	Optional: All-Wheel Drive

2.4L LUXURY INCLUDES 2.4L PREMIUM STANDARD EQUIPMENT PLUS:	
All-Wheel Drive	Electrochromic auto-dimming inside rearview mirror with HomeLink® and compass
4-way power adjustable passenger's seat	LED side mirror turn signal repeaters
AM/FM/SiriusXM™/CD/MP3 audio system with 4.3" colour touch-screen audio display	Proximity keyless entry with push-button ignition
Blind Spot Detection ³ (BSD) system with Lane Change Assist (LCA) and Rear Cross-Traffic Alert (RCTA) ⁴	Rearview camera
Driver's Integrated Memory System (IMS)	Sliding second-row seats
Leather seating surfaces	Panoramic sunroof
	Smart Power Liftgate

2.0T PREMIUM INCLUDES 2.4L PREMIUM STANDARD EQUIPMENT PLUS:	
2.0L Twin-Scroll Turbocharged-GDI 265 hp, 4-cylinder engine with Dual Continuously Variable Valve Timing (D-CVVT)	Transmission oil cooler
All-Wheel Drive	Proximity keyless entry with push-button ignition
	Supervision cluster with TFT LCD screen
	Twin tip exhaust

2.0T SE INCLUDES 2.0T PREMIUM STANDARD EQUIPMENT PLUS:	
19" Euroflange alloy wheels	Leather seating surfaces
AM/FM/SiriusXM™/CD/MP3 audio system with 4.3" colour touch-screen audio display	LED side mirror turn signal repeaters
Deluxe door scuff plates	Rearview camera
Electrochromic auto-dimming inside rearview mirror with compass	Panoramic sunroof
	Sliding second-row seats
	Smart Power Liftgate

2.0T LIMITED INCLUDES 2.0T SE STANDARD EQUIPMENT PLUS:	
4-way power adjustable passenger's seat	Driver's Integrated Memory System (IMS)
8.0" touch-screen navigation system with rearview camera	Electrochromic auto-dimming inside rearview mirror with HomeLink® and compass
Auto-leveling High Intensity Discharge (HID) headlights	Infinity® AM/FM/SiriusXM™/CD/MP3 audio system with 10 speakers
Blind Spot Detection (BSD) ³ system with Lane Change Assist (LCA) and Rear Cross-Traffic Alert (RCTA) ⁴	LED tail lights

	2.4L GDI	2.0T
ENGINE		
Type	2.4L GDI Theta II 4-cylinder engine	2.0L Turbo-GDI Theta II 4-cylinder engine
Cam design	DOHC	DOHC
Block/head composition	Aluminum/Aluminum	Aluminum/Aluminum
Horsepower @ RPM	190 @ 6,300 RPM	265 @ 6,000 RPM
Torque (ft.-lbs.) @ RPM	181 lb ft @ 4,250 RPM	269 lb ft @ 1,750-3,000 RPM
Bore and stroke (mm)	88 mm x 97 mm	86 mm x 86 mm
Compression ratio (:1)	11.3	9.5
Induction system	Variable	Variable
Fuel system	Gasoline Direct Injection	Gasoline Direct Injection
Engine mounts	Transverse	Transverse
Exhaust	Single exposed	Twin tip exposed
Anti-knock control	S	S
Recommended fuel	Regular unleaded	Regular unleaded

ELECTRICAL	
Ignition system	Electronic/Distributorless
Starter	1.2 kW
Alternator	13.5 V / 130 A
Battery	54 AH

BRAKING	
Type	Anti-lock Braking System (ABS) with Electronic Brake-force Distribution (EBD)
Front	320 mm / Ventilated disc / Single piston
Rear	302 mm / Solid disc / Single piston
Parking brake (mm)	190 Drum In Hat (DIH)

STEERING	
Type	Rack-mounted Motor Driven Power Steering (R-MDPS)
Overall ratio (:1)	15.03
Turns (lock to lock)	2.95
Turning diameter (m)	10.9

SUSPENSION	
Front / Rear	MacPherson struts / Multi-link
Front stabilizer bar (mm)	26.0
Rear stabilizer bar (mm)	21.0 (FWD) / 19.0 (AWD)

BODY / CHASSIS	
Type	Unibody
Primary materials	High tensile steel
Drag coefficient (cd)	0.34

VOLUME (L)	
Interior volume	3,058
Cargo behind front seats	2,025
Cargo behind 2 nd row seats	1,003

WEIGHTS / CAPACITIES		
Curb weight (kg)	FWD 1,569 – 1,711 / AWD 1,640 – 1,782	1,681 – 1,823
Gross weight (kg)	FWD 2,200 / AWD 2,300	2,350
Fuel tank capacity (L)	66	
Maximum towing capacity with trailer brake	2,000 lbs	3,500 lbs

FUEL ECONOMY (L/100KM)⁵ – 5 CYCLE TESTING METHOD		
City (FWD / AWD)	11.7 L/100 km / 12.5 L/100 km	– / 12.9 L/100 km
Highway (FWD / AWD)	8.7 L/100 km / 9.3 L/100 km	– / 9.7 L/100 km
Combined (FWD / AWD)	10.3 L/100 km / 11.1 L/100 km	– / 11.5 L/100 km

• = Standard - = Not Available ○ = Optional

		2.4L FWD	2.4L PREMIUM	2.4L LUXURY	2.0T PREMIUM	2.0T SE	2.0T LIMITED
PERFORMANCE							
Engine	2.4L GDI Theta II 4-cylinder engine	•	•	•	-	-	-
	2.0L Turbocharged-GDI Theta II 4-cylinder engine	-	-	-	•	•	•
Transmission	6-speed Electronic with SHIFTRONIC® manual mode	•	•	•	•	•	•
Drive configuration	Front Wheel Drive (FWD)	•	•	-	-	-	-
	All-Wheel Drive (AWD)	-	○	•	•	•	•
EXTERIOR							
Wheels and tires	17" x 7.0J aluminum alloy wheels with P235/65R17 all-season tires	•	•	•	•	-	-
	19" x 7.5J aluminum alloy wheels with P235/55R19 all-season tires	-	-	-	-	•	•
	Temporary spare tire	•	•	•	•	•	•
Exterior lighting	Projector beam halogen headlights	•	•	•	•	•	-
	Automatic headlights	-	•	•	•	•	•
	Fog lights	•	•	•	•	•	•
	LED positioning lamps	•	•	•	•	•	•
	High Intensity Discharge (HID) headlights with auto-leveling	-	-	-	-	-	•
	LED tail lights	-	-	-	-	-	•
Outside mirrors	Blind Spot Detection (BSD) indicators	-	-	•	-	-	•
	Heated with timer, power activation, body colour and manual folding	•	•	•	•	•	•
	LED integrated side mirror turn signal repeaters	-	-	•	-	•	•
	Memory function	-	-	•	-	-	•
Moldings and trim	Chrome grille	•	•	•	•	•	•
	Chrome door handles	•	•	•	•	•	•
Glass	Rear window privacy glass	•	•	•	•	•	•
Wipers	Speed-sensitive front windshield wipers with 2 speeds and variable intermittent settings	•	•	•	•	•	•
	Windshield wiper de-icer	•	•	•	•	•	•
	Rear windshield, 2-speed with washer	•	•	•	•	•	•
INTERIOR							
Seating	Cloth seating surfaces	•	•	-	•	-	-
	Leather seating surfaces	-	-	•	-	•	•
	4-way adjustable head restraints	•	•	•	•	•	•
	Driver seat power lumbar support 2-way	•	-	-	-	-	-
	Driver seat power lumbar support 4-way	-	•	•	•	•	•
	12-way power-adjustable driver's seat	-	•	•	•	•	•
	4-way power-adjustable passenger seat	-	-	•	-	-	•
	Driver's Integrated Memory System (IMS) for seat and mirror positions	-	-	-	-	-	•
	Heated front seat	•	•	•	•	•	•
	Ventilated front seat	-	-	-	-	-	•
	40/20/40 rear bench split	•	•	•	•	•	•
	Rear heated seats	-	•	•	•	•	•
	Rear sliding seats	-	-	•	-	•	•
	Remote release cargo area	-	-	•	-	•	•
Multimedia	AM/FM/SiriusXM™/CD/MP3 audio system with 6 speakers	•	•	-	•	-	-
	AM/FM/SiriusXM™/CD/MP3 audio system with 4.3" LCD touch-screen display	-	-	•	-	•	-
	8.0" high-resolution touch-screen navigation system with Infinity® audio system and 10 speakers	-	-	-	-	-	•
	Rear parking assistance sensors	-	•	•	•	•	•
	Rearview camera	-	-	•	-	•	•
	iPod®/USB and MP3 auxiliary input jacks (center console mounted)	•	•	•	•	•	•
	Bluetooth® hands-free phone system	•	•	•	•	•	•
Interior trim	Deluxe door scuff plates (aluminum)	-	-	-	-	•	•
	Exterior and interior chrome door handles	•	•	•	•	•	•

		2.4L FWD	2.4L PREMIUM	2.4L LUXURY	2.0T PREMIUM	2.0T SE	2.0T LIMITED
INTERIOR (continued)							
HVAC	Manual air conditioning with auto-defogging system	•	-	-	-	-	-
	Dual-zone automatic climate control with CleanAir Ionizer	-	•	•	•	•	•
	Cabin air filter	•	•	•	•	•	•
	Rear seat HVAC ducts (mounted in B-pillar)	•	•	•	•	•	•
	Rear window defroster with timer	•	•	•	•	•	•
Steering wheel	Leather-wrapped steering wheel and gearshift knob	-	•	•	•	•	•
	Heated steering wheel	-	•	•	•	•	•
	Audio (volume, mode, seek) and Bluetooth® hands-free telephone controls	•	•	•	•	•	•
	Manual tilt-and-telescopic steering column adjustment	•	•	•	•	•	•
Convenience	Cruise control	•	•	•	•	•	•
	Panoramic sunroof (power tilt-and-slide with one-touch operation)	-	-	•	-	•	•
	Smart Power Liftgate	-	-	•	-	•	•
	Power windows with driver's auto up/down and pinch protection	•	•	•	•	•	•
	Power windows with passenger's auto up/down and pinch protection	-	•	•	•	•	•
	Power door locks	•	•	•	•	•	•
	Remote keyless entry system with security alarm	•	•	•	•	•	•
	Electrochromic auto-dimming rearview mirror with compass	-	-	•	-	•	•
	HomeLink® garage door transceiver	-	-	•	-	-	•
	12-volt outlet cargo area, hinged cap	•	•	•	•	•	•
	Cargo area under floor storage	•	•	•	•	•	•
	Rear side window sun shades	-	•	•	•	•	•
	Proximity keyless entry with push-button ignition	-	-	•	•	•	•
SAFETY							
Safety	Airbags ¹ (7) – driver's knee (1), front impact (2), front seat-mounted side impact (2), front/rear side curtains (2)	•	•	•	•	•	•
	Blind Spot Detection (BSD) ² with Lane Change Assist (LCA) and Rear Cross-Traffic Alert (RCTA) ⁴	•	•	•	•	•	•
	Electronic Stability Control (ESC) with Traction Control System (TCS) ²	•	•	•	•	•	•
	Anti-lock Braking System (ABS) with Electronic Brake-force Distribution (EBD) and Brake Assist (BA)	•	•	•	•	•	•
	Vehicle Stability Management (VSM)	•	•	•	•	•	•
	Energy-absorbing steering column	•	•	•	•	•	•
	Body-side reinforcements	•	•	•	•	•	•
	Shift interlock system	•	•	•	•	•	•
Security	Tamper-proof door lock key cylinder	•	•	•	•	•	•
	Steering wheel locks when key is removed	•	•	•	•	•	•
	Anti-theft system integrated with remote keyless entry	•	•	•	•	•	•
EXTERIOR / INTERIOR DIMENSIONS							
		ALL MODELS					
Wheelbase	2,700 mm	Head room (1 st row / 2 nd row)		1,006 mm / 992 mm			
Overall length	4,690 mm	(with Panoramic roof)		971 mm / 951 mm			
Overall width (excluding mirrors)	1,880 mm	Leg room (1 st row / 2 nd row)		1,120 mm / 1,000 mm			
Overall height with roof rack side rails	1,690 mm	Hip room (1 st row / 2 nd row)		1,439 mm / 1,406 mm			
Minimum ground clearance	185 mm	Shoulder room (1 st row / 2 nd row)		1,508 mm / 1,480 mm			

For more detailed specifications and information, please visit hyundaicanada.com, or visit your dealer today.

hyundaicanada.com/santa-fe-sport



^{TM/®}The Hyundai name, logos, product names, feature names, images and slogans are trademarks owned by Hyundai Auto Canada Corp. Specifications, features, illustrations, accessories, materials and equipment and all other information shown in this brochure are based on the latest information available at the time of publication. Although descriptions are believed to be correct, accuracy cannot be guaranteed. Hyundai Auto Canada Corp. reserves the right to make any changes or modifications at any time, without notice or obligation, including, without limitation, in colour, specifications, features, accessories, materials, equipment and models. Some vehicles are shown with optional equipment. All Hyundai warranties have no deductible. [†]Hyundai's Comprehensive Limited Warranty coverage covers most vehicle components against defects in workmanship under normal use and maintenance conditions. ^{††}Hyundai's 24-Hour Roadside Assistance Program is a limited service and does not cover certain costs or expenses. Roadside Assistance is not a warranty. [^]Fuel economy figures are based on manufacturer's testing and are used for comparison purposes only. Actual fuel efficiency may vary based on driving conditions and the addition of certain vehicle accessories. ^{†††}The Supplemental Restraint (Airbag) System (SRS) is designed to work with the 3-point seatbelt system. The SRS deploys in certain frontal and/or side-impact conditions where significant injury is likely. The SRS is not a substitute for seatbelts, which must still be worn at all times. Children under the age of 13 should be securely restrained in the rear seat. NEVER place a child-seat in the front seat of a Hyundai vehicle. ^²Electronic Stability Control (ESC) and Traction Control System (TCS) are meant to enhance conscientious driving habits and are not a substitute for safe driving practices. ESC cannot control your vehicle's stability under all driving situations. No system, no matter how advanced, can overcome physics or correct poor driving. Speed, road conditions and driver steering input will affect whether ESC can help prevent loss of control. See Owner's Manual for details. ^³Never rely completely on Blind Spot Detection (BSD) and be sure to use proper lane changing procedures. BSD will not detect every object or vehicle and will not prevent accidents. Always look over your shoulder and use your mirrors to confirm clearance. See Owner's Manual for further details and limitations. ^⁴Never rely exclusively on the Rear Cross-Traffic Alert. Always look over your shoulder and use your mirrors to confirm rear clearance. There are limitations to the function, detection, range and clarity of the system. The system may not detect every vehicle. This system does not detect stationary objects. Vehicle must be in reverse and has to be traveling at 10 km/hr or less. See Owner's Manual for further details and limitations. The SiriusXM[™] name is a trademark of SiriusXM Satellite radio Inc., Bluetooth[®] word mark and logos are registered trademarks owned by Bluetooth SIG, Inc., iPod[®] is a registered trademark of Apple Inc., HomeLink[®] is a registered trademark of Johnson Controls Inc. All other trademarks and trade names are those of their respective owners.

