



The Power to Surprise

---

*ALL-NEW 2017*  
**SPORTAGE**





**SPORTAGE**

**MADE FOR  
[ ACTIVE LIFESTYLES ]**

The next chapter begins here. Where it goes next is totally up to you. In a vehicle that's designed around your lifestyle. You'll make a statement every kilometre of your journey in a CUV that's defined by its stylish, athletic lines. It's also a vehicle that easily adapts to change, with a highly flexible interior layout and technology that adjusts to changing road conditions automatically, including the advanced available Dynamax™ Intelligent AWD system. The very latest in infotainment integrates seamlessly with your devices, while sophisticated safety systems enhance your peace of mind, with features like available Autonomous Emergency Braking.<sup>2</sup> You pack everything into every day. Isn't it time you drove a vehicle with the same attitude and capability? Introducing the all-new 2017 Kia Sportage. It fits your life.

//////////



# A ROAD OF YOUR OWN.

It's calling out for you – that place where everything comes together and you leave the traffic of life in your rearview. Where your intentions are made unmistakably clear – when you're behind the wheel of the all-new 2017 Sportage. Striking styling features like available 19-inch machine-finished alloy wheels, available quad LED fog lights and dual exhaust tailpipes set the stage. The standard direct-injected 2.4-litre four-cylinder engine and available direct-injected 2.0-litre turbocharged engine work with the available Dynamax™ Intelligent AWD system to give you the responsive power and control you need to leave the rest behind.

#### MORE TORQUE, BETTER PERFORMANCE

The revised engines in the new Sportage deliver a significant boost in torque output. That translates into more at-the-ready peak power and acceleration. The all-aluminum block direct-injected 2.4-litre (GDI) engine generates 181 horsepower and 175 lb.-ft. of torque. The engine is standard on Sportage LX and EX models, delivering the performance you want and the efficiency you need. SX models raise the stakes with a turbocharged 2.0-litre gasoline direct injection (GDI) 4-cylinder rated at a robust 237 horsepower and 260 lb.-ft. of torque.

#### PRECISION HANDLING

The advanced new front and rear suspension design adds stability at higher speeds, while the new standard high performance gas shock absorbers can adjust to offer either a more comfortable or sportier ride.

#### HIGH-STRENGTH BODY STRUCTURE

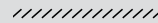
The extensive use of advanced high-strength steel and the strategic use of exceptionally strong hot-stamped steel results in a much stiffer body structure. The pay off for you is more dynamic handling, plus a quieter, smoother and safer ride.





# IT'S EVEN BRIGHTER INSIDE.

To you, they aren't amenities, they're necessities. And nothing is as basic to your enjoyment as light, air and comfort. In the new Sportage, the light refers to the new, expanded available panoramic sunroof. And what the sunroof does for light, the standard heated front seats and available air-cooled front seats do for your comfort. EX and SX models add the personalization of dual-zone fully-automatic temperature control, helping to keep the peace up front, for an even more relaxing ride.



## PANORAMIC SUNROOF

The next-generation available panoramic sunroof is substantially larger than its predecessor, filling the interior with light. The use of carbon-fibre reinforced plastics in the frame increases the sunroof's overall stiffness, while also reducing its weight, which increases fuel efficiency and handling.



## VERSATILITY

By lowering the height of the cargo floor, the new Sportage offers an increase in cargo capacity. The versatility is enhanced by 60:40 split flat-folding rear seats that open up generous room for your oversized gear.



## DUAL-ZONE TEMPERATURE CONTROL

Fully automatic dual-zone temperature control on EX and SX models allows the driver and front passenger to set their own preferred temperatures.



## HEATED AND COOLED SEATS

Heated front seats are standard on all Sportage models. You can choose available heated rear seats to raise the comfort level for those seated in the second row. Available air-cooled front seats keep you in your comfort zone even on the hottest days.



## HEATED STEERING WHEEL

All it takes is a touch of a button to start feeling the warmth of the available heated steering wheel. If performance feel is what you're looking for, opt for the available D-cut sport steering wheel.



YOU HAVE  
ALL THE  
ANGLES  
COVERED.

By angling the dashboard and the centre console toward you, the new Sportage creates a more intuitive form of control. Also sure to make a strong impression is the wide range of the latest available multimedia information and entertainment technology<sup>3</sup> at your fingertips – from Android Auto<sup>1</sup> to a Harman/Kardon<sup>®5</sup> premium audio system. It looks, feels and sounds even better from here – inside the all-new 2017 Kia Sportage.



#### 1. WIRELESS CHARGING<sup>1</sup>

The all-new Sportage comes with an available inductive wireless charging pad that charges your phone effortlessly while you're on the go – without the messy cords.

#### 2. REARVIEW CAMERA<sup>2</sup>

The standard rearview camera gives you a view of objects and obstacles behind you when you're backing up. Dynamic visual guidelines help by predicting your path, based on your steering wheel position.

#### 3. MULTIMEDIA INTERFACE

The available 8-inch touchscreen includes voice-activated navigation<sup>3</sup> and an available Harman/Kardon<sup>®5</sup> premium audio system that delivers clear high-fidelity sound. New innovative technologies are also available, including seamless Apple Siri capability for compatible iPhones and Clari-Fi™ music restoration technology.

harman/kardon  
by HARMAN

#### 4. ANDROID AUTO<sup>1</sup>

Google and the new Sportage are made for each other, with a Google-themed environment in the available Android Auto smartphone integration system<sup>1</sup>. That's on top of other Google favourites like access to Google Play Music, Google Maps and Google Hangouts messaging. Want more? Visit the Google Play Store to download other great apps and tools to use with your Sportage.





# GO ON — EXPRESS YOURSELF.

Any idea that a crossover vehicle has to travel with the pack is turned upside down the moment you lay eyes on the all-new 2017 Sportage SX. Exterior details like the sport grille and satin chrome mouldings are matched by sporty interior touches like alloy pedals to give the Sportage SX a distinctly rebellious character. The bold design statement translates into energizing performance, thanks to a direct-injected 2.0L inline four-cylinder engine that features a twin-scroll turbocharger and generates an impressive 237 horsepower and 260 lb.-ft. of torque. And a new sporty suspension system heightens your connection to the road. Aren't you ready for it?

The turbocharged Sportage SX helps you accelerate with confidence, thanks to peak torque delivery at just 1,450 rpm. SX models match turbocharged power with the sporty feel of race-inspired paddle shifters that deliver true clutch-free manual shifting.



#### POWER AND EFFICIENCY

Both Sportage engines employ Dual Cam Variable Valve Timing (CVT) that automatically adjusts valve timing to provide increased power, reduce exhaust emissions and enhance fuel efficiency. And new electronic cam control, which improves cold weather performance.

#### DRIVE MODE SELECT

Standard on all Sportage automatic transmission models, Drive Mode Select adjusts power delivery, transmission shift pattern and steering feedback to suit the road and weather conditions — and your personal driving style. Normal mode is for regular driving, while Eco emphasizes fuel efficiency and Sport delivers more aggressive, performance-oriented responsiveness.





# ADVANCED TECHNOLOGY. ADVANCING YOUR SAFETY.

Safety technology has come a long way. And it goes a long way in advancing your peace of mind every time you drive. It begins with systems that are designed to help maximize control – from Electronic Stability Control (ESC) and Vehicle Stability Management system (VSM) to an Autonomous Emergency Braking system and Downhill Brake Control. For added all-weather grip, the sophisticated Dynamax™ Intelligent AWD system is available. These systems not only react to wheel slippage, they anticipate loss of grip and act proactively to help keep you in control.<sup>2</sup>

//////////

## DYNAMAX

Available Dynamax™ Intelligent All-Wheel Drive (AWD) offers fully automatic torque distribution that proactively transfers torque for better traction during acceleration, cornering, or in low traction scenarios.



### STRONG BODY STRUCTURE

Extensive use of advanced high-strength steel combined with an extremely well-reinforced chassis design and an exceptionally strong hot-stamping process has given birth to the safest and quietest Sportage to date.



#### 1. REAR CROSS TRAFFIC ALERT<sup>2</sup>

When backing out of a parking space, a sensor detects and alerts you to traffic approaching from the left or right.

#### 2. AUTONOMOUS BRAKING SYSTEM<sup>2</sup>

The all-new Sportage comes with an available Autonomous Emergency Braking system that intervenes automatically, providing full braking assistance, up to a complete stop when possible if it detects a potential collision with a vehicle in front of you.

#### 3. VEHICLE STABILITY MANAGEMENT SYSTEM

The Vehicle Stability Management system (VSM) senses a lateral skid and intervenes to help you regain control and return your vehicle to its intended path.

#### 4. ALL-AROUND PROTECTION

The side doors on Sportage are reinforced with steel beams to help absorb impact energy and deflect it away from passengers. The A

and B pillars (front and middle support pillars) are also reinforced to help strengthen the body structure. Additional protection is provided by six standard strategically positioned airbags.

#### 5. BLIND SPOT DETECTION<sup>2</sup>

Sensors monitor the side and rear for vehicles approaching your blind spots. Visual alerts are provided on the outside mirrors and instrument cluster; an audio alert is sounded when necessary. For added safety, the available Lane Departure Warning system activates an alert if you begin to drift out of your lane.

#### 6. DYNAMIC DIRECTIONALLY ADAPTIVE HEADLIGHTS<sup>2</sup>

Available dynamic directionally adaptive headlights align the light beams with the path of the road as you turn. They also automatically raise and lower the angle of the beams while driving up or downhill.





# KIA, DELIVERING ON A PROMISE.

We promise you to deliver the most rigorous world-class standards in all aspects of the design, engineering and manufacturing of every vehicle that bears the Kia name. From our signature style, precision engineering and outstanding performance to innovative features and advanced safety systems, Kia is never content to follow the pack. That's not just talk – it's backed up by many of the industry's most coveted awards and accolades. In 2015, Kia's IQS score improved by 20 points over its previous best-ever performance in 2014, vaulting the growing automaker up

four positions to second overall among 33 automotive brands and highest among all mass-market nameplates.<sup>11</sup> In addition, Kia earned two more prestigious J.D. Power awards, one for "Highest Ranked Midsize SUV in Initial Quality in the U.S." for the 2015 Sorento<sup>6</sup> and "Highest Ranked Compact Multi-Purpose Vehicle in Initial Quality in the U.S." for the 2015 Soul.<sup>6</sup> In addition, Kia was selected as a Top 100 brand in Interbrand's Best Global Brands 2015 report. Of course, the most important evaluation is yours. Experience Kia today and experience the power of a promise fulfilled.



Provo concept

## STUNNING DESIGN

Under the direction of renowned President and Chief Design Officer Peter Schreyer — Kia vehicles have captured worldwide attention for their interior and exterior styling, which represents the collaborative work of designers who have created a look that makes every Kia recognizable at first sight. Today, the lineup consists of vehicles that fill owners as well as Kia's designers with pride.

## EXTENSIVE RESEARCH AND DEVELOPMENT

Kia's R&D procedures are rigorous and exhaustive. At proving grounds around the world, vehicles undergo unrelenting tests. A world-class wind tunnel provides testing in winds up to 200 km/h. Utilizing heavy-rain-and-snowfall testing chambers and a road simulator, Kia puts its vehicles through punishing tests as part of a commitment to develop exceptionally durable and safe vehicles.

## IMPRESSIVE WARRANTY PROGRAM

Kia engineers are passionate about producing vehicles that are exceptionally well-designed and reliable. Their dedication to quality and attention to detail give Kia the confidence to back every model with an outstanding warranty program.

## TAKING ON THE COMPETITION

The Kia Racing team is dedicated to competing against world-class competition — and winning. That dedication is part of Kia's belief that the knowledge gained in competition can be applied to the entire Kia lineup to provide you with vehicles that perform beyond your expectations. The Kia Racing team includes championship-winning drivers with proven track records. Be sure to look for Kia in the winner's circle at racetracks across North America in the future.



# FIFA®



## FIFA PARTNER

As the FIFA Official co-Automotive Partner, Kia is proud to help promote soccer globally. As the world's most popular sport, soccer has a special place in the hearts and minds of people in every corner of the planet. Here in Canada, enthusiasm and participation continues to build. And Kia is honoured to be at the centre of the action.

## MAJOR LEAGUE SOCCER 2015

Kia is a proud founding partner of all three Canadian MLS teams, sharing a true passion for the game!



# FEATURES AND SPECIFICATIONS

Exterior	LX	EX	SX
17" alloy wheels	●	–	–
18" machined-finish alloy wheels	–	●	–
19" machined-finish alloy wheels	–	–	●
225/60R17 tires	●	–	–
225/55R18 tires	–	●	–
245/45R19 tires	–	–	●
Tire mobility kit	●	●	–
Compact spare tire	–	–	●
Dynamax™ intelligent all-wheel drive	○	○	●
High-performance shocks	●	●	●
LED daytime running lights	–	●	●
Dual-function projection headlights	●	●	●
Xenon High Intensity Discharge (HID) headlights	–	○	●
Dynamic directionally adaptive headlights	–	○	●
Projection fog lights	●	●	–
Quad LED fog lights	–	–	●
LED lightbar taillights	–	●	●
Windshield wiper de-icer	–	●	●
Rear window wiper	●	●	●
Sound reducing front windshield	●	●	●
Deep privacy tint glass	●	●	●
Solar glass	–	●	●
Panoramic sunroof with power sunshade	–	P	●
Body coloured sideview mirrors	●	●	●
Power heated sideview mirrors	●	●	●
LED sideview mirror signal repeaters	–	●	●
Automatic power folding sideview mirrors	–	●	●
Welcome lighting system	–	●	●
Satin chrome trim	–	–	●
Body coloured door handles	●	–	–
Split-chrome door handles	–	●	–
Satin chrome door handles	–	–	●
Splash guards	●	●	●
Dual stainless steel exhaust tips	–	–	●
Silver front and rear skid plates	–	–	●
Roof rails	○	●	●
Rear spoiler	●	●	●

## Seating & Trim

Cloth seats	●	–	–
Premium cloth seats	–	●	–
Leather seats	–	P	●
Height adjustable driver seat	●	●	●
Heated front seats	●	●	●
Heated rear seats	–	TECH	●
Air-cooled front seats	–	TECH	●
10-way power adjustable driver's seat with 2-way lumbar support	–	●	●
Power adjustable passenger seat	–	TECH	●
Rear armrest with cup holders	●	●	●
60:40 folding rear seats	●	●	●
Heated steering wheel	–	P	●
Leather-wrapped steering wheel	–	●	●
Leather-wrapped gear shift knob	–	●	●
Chrome interior door handles	–	–	●
Piano black interior trim	–	–	●
Stainless steel sill plates	–	–	●
Sport steering wheel (D-cut)	–	–	●
Sport alloy pedals	–	–	●

● = Standard ○ = Optional – = Not Available  
P = Premium package TECH = Tech package

Comfort & Convenience	LX	EX	SX
Air conditioning	●	●	●
Cabin air filter	●	●	●
Dual-zone fully automatic climate control	–	●	●
Rear climate ventilation	●	●	●
Automatic defog system	–	●	●
Automatic headlights	●	●	●
Illuminated vanity mirror	●	●	●
Map lights	●	●	●
LED cabin lighting	–	P	●
Sunglass holder	●	●	●
Auto-dimming rearview mirror	–	●	●
Tire pressure monitoring system (tire specific)	–	–	●
Low washer fluid lamp	●	●	●
Trip computer	●	●	●
Supervision TFT/LCD instrument cluster	–	●	●
AM/FM/CD <sup>7</sup> /satellite radio <sup>8</sup>	●	–	–
AM/FM/satellite radio <sup>8</sup>	–	●	●
iPod <sup>9</sup> /USB/AUX inputs <sup>9</sup>	●	●	●
Bluetooth <sup>9</sup> hands-free cell phone connectivity <sup>3,4</sup>	●	●	●
5-inch LCD audio display	●	–	–
7-inch LCD audio display <sup>7</sup>	–	●	–
8-inch multimedia interface with navigation <sup>3,7</sup>	–	TECH	●
Android Auto smartphone integration <sup>1</sup>	–	●	●
Harman/Kardon <sup>8</sup> premium audio system <sup>5</sup>	–	TECH	●
Tilt and telescopic steering column	●	●	●
Power windows	●	●	●
Express up and down driver window	●	●	●
Power door locks	●	●	●
Keyless entry	●	●	●
Smart key with push-button start	–	●	●
Steering wheel mounted paddle shifters	–	–	●
Steering wheel mounted audio controls	●	●	●
Steering wheel mounted cruise control	●	●	●
Drive mode select (Eco/Normal/Sport)	●	●	●
Electronic parking brake	–	TECH	●
Front and cargo area 12V power outlets	●	●	●
Cargo cover and luggage net	–	P	●
Wireless phone charger <sup>1</sup>	–	TECH	●
High-output USB charge port	–	TECH	●
Smart power liftgate	–	TECH	●
Security alarm	●	●	●
Engine immobilizer	●	●	●

## Safety

	LX	EX	SX
Dual advanced front airbags	●	●	●
Dual side airbags	●	●	●
Dual side curtain airbags	●	●	●
4-wheel ABS disc brakes (ABS)	●	●	●
Larger front brakes	–	–	●
Impact-sensing door unlock	●	●	●
Hill assist control (HAC)	●	●	●
Downhill brake control (DBC)	●	●	●
Electronic stability control (ESC)	●	●	●
Vehicle stability management (VSM)	●	●	●
Rearview camera <sup>2</sup>	●	●	●
Blind spot detection <sup>2</sup>	–	P	●
Rear cross traffic alert <sup>2</sup>	–	P	●
Rear parking sensors <sup>2</sup>	–	P	●
Front parking sensors <sup>2</sup>	–	–	●
Autonomous emergency braking system <sup>2</sup>	–	–	●
Lane departure warning system <sup>2</sup>	–	–	●

Engine	LX & EX	SX
Type	2.4L, GDI 4-cylinder, aluminum block and head	2.0L, Turbo GDI 4-cylinder, aluminum block and head
Valve train	DOHC, 4 valves per cylinder, Dual-cam Variable Valve Timing (D-CVVT), timing chain	DOHC, 4 valves per cylinder, Dual-cam Variable Valve Timing (D-CVVT), timing chain
Horsepower	181 hp @ 6,000 rpm	237 hp @ 6,000 rpm
Torque	175 lb.-ft. @ 4,000 rpm	260 lb.-ft. @ 1,450-3,500 rpm
Compression ratio	11.3:1	10.0:1
Intake	Variable Intake System (VIS), Electronic Throttle Control (ETC)	Twin-scroll turbocharger, Electronic Throttle Control (ETC)
Drive type	Front wheel drive (FWD); available Dynamax™ all-wheel drive (AWD)	Dynamax™ all-wheel drive (AWD)
Fuel management	Gasoline direct injection (GDI)	Gasoline direct injection (GDI)
Recommended fuel	Regular unleaded	Regular unleaded
Transmission	6-speed Sportmatic automatic	6-speed Sportmatic automatic with paddle shifters

## Dimensions, mm (in.)

Wheelbase	2,670 (105.1)
Length	4,480 (176.4)
Width	1,855 (73)
Height without / with roof rails	1,635 (64.4) / 1,645 (64.8)
Ground clearance	162 (6.4) / AWD: 172 (6.8)
Approach/departure angle	16.7° / 23.9° AWD: 28° / 24.6°
Head room - front without / with sunroof	997 / 954 (39.3 / 37.6)
Head room - rear without / with sunroof	993 / 962 (39.1 / 37.9)
Shoulder room - (front/rear)	1,450 / 1,400 (57.1 / 55.1)
Leg room - (front/rear)	1,053 / 970 (41.5 / 38.2)
Hip room - (front/rear)	1,380 / 1,300 (54.3 / 51.2)

Body & Chassis	
Layout	Front engine
Body type	Unibody
Front suspension	Independent, McPherson struts with gas shock absorber
Rear suspension	Independent, multi-link with gas shock absorber
Steering	Electric power steering (EPS)

## Brakes

Type	4-wheel disc
ABS	4-sensor, 4-channel
Front, mm (in.)	406.4 (16), SX: 431.8 (17)
Rear, mm (in.) FWD/AWD	406.4 (16)

Curb Weight, kg (lb.)	FWD	AWD / AWD Turbo
Maximum curb weight	1,631 (3,596)	1,696 / 1,813 (3,739 / 3,997)
Gross vehicle weight	2,085 (4,596)	2,150 / 2,210 (4,740 / 4,872)

## Capacities, L (cu. ft.)

Interior volume	3,660 (129.3)
Cargo capacity (behind 1st row) floor raised/lowered	1,565 / 1,703 (55.7 / 60.1)
Cargo capacity (behind 2nd row) floor raised/lowered	798 / 868 (28.9 / 30.7)
Maximum towing capacity, kg (lbs.)	907 (2000) <sup>10</sup>
Fuel tank capacity, L	62

Fuel Economy, Highway/City, L/100km	FWD	AWD
2.4L GDI	8.0/10.4	9.5/11.3
2.0L Turbo GDI	–	10.2/11.9



## EXTERIOR COLOURS

Polar White  
BC/PC/BL/BRL/CBL



Sparkling Silver\*  
BC/PC/BL



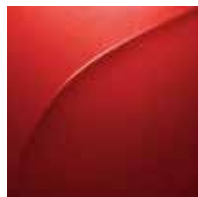
Mineral Silver\*  
BC/PC/BL



Black Cherry\*  
BC/PC/BL/BRL/CBL



Scarlet Red\*  
BC/PC/BL



Modern Bronze\*  
BC/PC/BL/BRL/CBL



Storm Blue\*  
BC/PC/BL/BRL/CBL



## INTERIOR COLOURS

Black cloth (BC)



Premium cloth (PC)



Black leather (BL)



Dark brown leather (BRL)



Two-tone canyon beige leather (CBL)



## WHEELS

17" alloy wheel



18" machined-finish alloy wheels



19" machined-finish alloy wheels



\*Premium paint.  
The exterior and interior colours in this brochure are as close to the actual vehicle production colours as the printing process allows.

## Get the points.

Kia Member Rewards is an exclusive rewards program for Kia customers.

As a Kia Rewards Member, you'll earn points with every dollar you spend on maintenance service, parts and accessories at your servicing Kia dealer. Those Reward Points can be redeemed for discounts on future purchases – including the purchase of a new Kia. Plus earn Bonus Points on select items and services to collect rewards even faster.

**Kia Member Rewards No-Charge Benefits include:**

- Fuel fill-up with the delivery of your new Kia vehicle

**Become a Kia Premium Rewards Member:**

Ask your Kia Dealer how you can enjoy even more benefits.

**Enroll Today:**

Becoming a Kia Rewards Member is easy. See your Kia Dealer today to join. Visit [rewards.kia.ca](http://rewards.kia.ca) for full terms and conditions.



- Local shuttle service
- Multi-point vehicle inspection with every service visit
- Windshield washer fill-up with every paid service
- Windshield wiper installation with wiper purchase
- Preferential rates on car rentals, nationwide
- 24/7 Roadside Assistance for your vehicle under Kia's 5-year/100,000 km warranty or Certified Pre-Owned warranty
- Email notification of exclusive Kia specials and events – a great way to earn Reward Points and save on future purchases



## We've got you covered.

At Kia, we believe peace of mind should come standard with every vehicle we make. That's why we back every model with one of the best warranties in the industry.

**Our outstanding warranty coverage includes:**

5-year/100,000 km – Worry-free comprehensive warranty covering virtually the entire vehicle<sup>12</sup>

5-year/100,000 km – Powertrain warranty covering the engine, transmission, axles, differentials and driveshafts<sup>12</sup>

5-year/100,000 km – Roadside assistance covers you in case of mechanical breakdown anywhere in North America<sup>12</sup>

5-year/unlimited km – Anti-perforation warranty on body sheet metal defects in material/workmanship<sup>12</sup>

For more information visit [kia.ca](http://kia.ca) or call 1-877-542-2886



Kia Accessories are built to the same high standards of quality as your vehicle. That means they fit right, work right, and look great.

Choose from a wide range of interior and exterior accessories to make your Kia fit your personality and lifestyle. From alloy wheels to sport pedals, travel-friendly rooftop carriers to all-weather floor mats and more, your Kia Dealer has it all.

Talk to your Dealer today or visit [kia.ca](http://kia.ca) to explore accessory options for your Kia.

\* Available accessories may vary. See Dealer for details. Images shown for illustration purposes only.



Hood deflector



Side steps



Sport visors



All-weather mats



Roof-mounted bike rack



Roof cargo box



Accessory wheels



 facebook.com/kiacanada

 twitter.com/kiacanada

 youtube.com/kiacanada

kia.ca



The Power to Surprise



SPORTAGE

1. Compatible smartphone required. Data rates may apply, please check with your wireless service provider. For wireless charging, certain smartphones may require a wireless charging-compatible case. 2. Please note that your vehicle may not be equipped with all features described. This also applies to safety-related systems and functions. None of the features we describe are intended to replace the driver's responsibility to exercise due care while driving and are not a substitute for safe driving practices. Some features may have technological limitations. For additional information regarding the various features, including their limitations and restrictions, please refer to your vehicle's Owner's Manual. 3. When equipped with Bluetooth® wireless connectivity and the navigation system, French voice commands may be limited. 4. The Bluetooth® word mark and logos are registered trademarks owned by Bluetooth SIG, Inc. Bluetooth® technology enabled cellphone required. 5. Harman Kardon® is a registered trademark of Harman International Industries, Incorporated. 6. The Kia Sorento received the lowest number of problems per 100 vehicles among midsize SUVs in the proprietary J.D. Power U.S. 2015 Initial Quality Study<sup>SM</sup>. Study based on responses from 84,367 U.S. new-vehicle owners, measuring 244 models and measures opinions after 90 days of ownership. Proprietary study results are based on experiences and perceptions of U.S. owners surveyed in February-May 2015. Your experiences may vary. Visit [jdpower.com](http://jdpower.com). The Kia Soul received the lowest number of problems per 100 vehicles among compact multi-purpose vehicles in the proprietary J.D. Power U.S. 2015 Initial Quality Study<sup>SM</sup>. Study based on responses from 84,367 U.S. new-vehicle owners, measuring 244 models and measures opinions after 90 days of ownership. Proprietary study results are based on experiences and perceptions of U.S. owners surveyed in February-May 2015. Your experiences may vary. Visit [jdpower.com](http://jdpower.com). 7. When equipped with the 7-inch LCD audio display or navigation system, CD player unavailable. 8. SiriusXM® satellite radio service includes 3 month trial and is available in the 10 provinces and three territories of Canada, and the 48 contiguous states of the U.S. Monthly subscription sold separately after three trial months. 9. iPod® is a registered trademark of Apple Inc. 10. When properly equipped. Do not exceed any weight ratings and follow all towing instructions in your Owner's Manual. 11. The 2015 U.S. Initial Quality Study is based on responses from more than 84,000 purchasers and lessees of new 2015 model-year vehicles surveyed after 90 days of ownership. The study is based on a 233-question battery organized into eight problem categories designed to provide manufacturers with information to facilitate the identification of problems and drive product improvement. The study was fielded between February and May 2015. Find detailed information on vehicle quality, as well as model photos and specs, at [www.jdpower.com/quality](http://www.jdpower.com/quality). 12. The Kia 5-year/100,000-km warranty includes various warranties and roadside assistance. Some restrictions apply. For more information call us at 1-877-542-2886 or visit to [kia.ca](http://kia.ca).

All information contained herein was accurate and correct at the time of printing. Kia Canada Inc. reserves the right to make changes at any time without notice, and without any obligations as to colours, materials, specifications, features, accessories, packages, models and any applicable programs. Some vehicles shown may include optional equipment or may not be exactly as shown. Kia Canada Inc., by the publication and dissemination of this material, does not create any warranties, either expressed or implied, to any Kia products. See your Kia dealer or website for further details. Reproduction of the contents of this material without the expressed written approval of Kia Canada Inc. is prohibited. © Copyright 2016 Kia Canada Inc. Printed in Canada, February 2016.