

Time tested, quality service you can count on

Customer satisfaction is important to us. We strive to provide an easy customer experience by offering a simple claims process.

FILE A CLAIM

File a claim by calling the administrator at 1-800-453-8470 or visit permaplate.com

24-HR ROADSIDE ASSISTANCE

1-888-664-4561



TIRE & WHEEL PROTECTION



PERMAPLATE®

Have questions? Ask your dealer for more information or contact PermaPlate® directly at (800) 453-8470.

Siskin Enterprises, Inc.
P.O. Box 58 | Salt Lake City, UT 84110

ROAD HAZARD & WHEEL PROTECTION

Protect the most important part of your vehicle...

Every year millions of drivers sustain costly tire and wheel damage from inevitable road hazards. PermaPlate's Road Hazard & Wheel Protection covers repair or replacement costs of tires and wheels should covered damage occur.



What's covered?

Wheel/Rim repair or replacement

Tire repair or replacement

No replacement cost/zero deductible

Roadside assistance
(Towing, fluid delivery, flat tire assistance, battery assistance, lockout service)

Curb impact repair & replacement

Cosmetic wheel protection

OPTIONAL UPGRADE

Additional exclusions may apply. Please see your Agreement for specific coverage details, including limitations and exclusions.

driving on deteriorated roadways costs U.S. drivers

\$6.4 billion annually.

Source: Poor Pavement Hits Lower-Income Americans Hard, February 2016. Web.

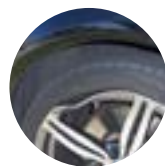
TOP REPORTED CAUSES OF TIRE DAMAGE



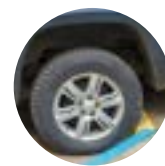
TIRE & WHEEL PROTECTION INCLUDES:



Tire Repair/ Replacement



Wheel/rim Repair/Replacement



Curb Impact Repair/Replacement



Limited Roadside Assistance



Rental Car Reimbursement



Cosmetic Wheel Protection (optional upgrade)

