



The Power to Surprise

---

*ALL-NEW 2016*  
**SORENTO**

**SORENTO**

**READY FOR AN  
EVEN MORE  
ADVENTUROUS  
FORM OF  
DRIVING?**

The look is so much more adventurous than anything you'd imagine for a vehicle this functional. It's the look of confidence, opening previously uncharted territory for you and your family. The performance further heightens your command, with three engines to choose from, including the sporty 290-horsepower 3.3L V6 GDI. Equally as important is the way it enables a wide range of your favourite pursuits, with available seven-passenger seating and a host of built-in convenience features, such as the available Smart Power Liftgate. The technology also blazes a trail of its own, with such innovative available driver awareness systems as Smart Cruise Control<sup>1</sup> and Blind-Spot Detection.<sup>1</sup> Introducing a bolder take on the utility vehicle – introducing the all-new 2016 Sorento. Redesigned. Reengineered. Reimagined.

//////////



IT MAKES ITSELF  
RIGHT AT HOME,  
WHEREVER  
YOU TAKE IT.



The all-new 2016 Sorento fits beautifully into any landscape – anywhere from city streets to national parks. Different settings clearly bring out other aspects of its accommodating personality. And its flexible seating helps you make the most of any trip and any destination. No matter where it's headed, the new Sorento is sure to draw attention, with its wide stance and sculpted contours. A range of premium amenities complete the picture, with available features like UVO Powered by Microsoft®<sup>2</sup> – a voice activated infotainment system that connects to the media and devices you bring along for the ride. Getting the idea of how Sorento represents a destination all its own?

201511180006



# YOU'LL FEEL VERY WELCOME.

As soon as you enter the cabin of the all-new Sorento, you'll recognize that it's a very welcoming space. It offers genuine comfort for up to seven with the available seating package. It also makes room for a substantial amount of cargo, thanks to split-folding second-row seats, in addition to the available fold-flat third-row seat. Once you're on the road, you'll appreciate another defining trait – a truly quiet ride that's the product of features like an available sound-absorbing laminated windshield. Enjoy the ride. In the 2016 Sorento.

## SEATING FOR SEVEN.

The available third-row of seating increases the passenger capacity to seven. It combines with available quick-fold second-row seats for increased flexibility and easier loading and unloading.



## PANORAMIC SUNROOF WITH POWER SUNSHADE.<sup>11</sup>

There's nothing quite like the feeling of spaciousness and breath of fresh air with the available panoramic sunroof. A power sunshade is included for quick and convenient operation.



## HEATED AND AIR-COOLED SEATS.

Heated first and available heated second-row seats allow adjustable comfort for driver and passengers. On warm days, the driver and front passenger can enjoy a cooling airflow through the front seat cushions and seat backs (available on SX models).



## UNDERFLOOR STORAGE COMPARTMENT.

You can store an emergency kit and valuables in the spill-proof tray under the cargo space floor (5-passenger models only).



## SMART POWER LIFTGATE.

The available hands-free Smart Power Liftgate opens when it senses your smart key – no hands or feet are required.



IT SOUNDS  
AS GOOD AS  
IT LOOKS.



There's a new world of style and technology inside the all-new Sorento. The tone is highly refined, with such upscale details as soft-touch surfaces and available premium amenities, such as the Nappa leather seats on the SX+ model. The latest in entertainment and information technology further enhances the driving experience. You can stream audio from your compatible Bluetooth®-enabled<sup>3</sup> device. You can also choose to add available premium technology features, such as the Infinity™<sup>4</sup> by Harman surround-sound audio system with 10 speakers, a 178 mm (7-in.) Supervision instrument cluster with high-contrast graphics, and a voice-activated navigation system.<sup>5</sup> Sounds like your kind of vehicle.



**ELECTRONIC PARKING BRAKE.**  
For your convenience, the available electronic parking brake automatically releases when you shift out of Park.



**HEATED STEERING WHEEL.**  
Luxurious touches, such as a heated steering wheel are standard on Sorento EX models.



**2<sup>ND</sup>-ROW SUNSHADES.**  
Available integrated 2<sup>nd</sup>-row sunshades help reduce glare and are neatly concealed when not in use.



**115V POWER INVERTER.**  
With Sorento's available 115V power inverter, you can plug electronic devices, such as a laptop or a portable gaming console, right into the electrical power outlet.



**MULTIMEDIA INTERFACE.**  
Sorento SX models are equipped with Kia's sophisticated multimedia interface. It combines a dynamic display and brilliant graphics with touch-screen capabilities and speech recognition technology for precise control of multiple systems and functions. You can use your voice or the 203 mm (8-in.) LCD touch-screen to control the onboard navigation<sup>5</sup> and entertainment systems.

# GET FAR AWAY FROM THE EVERYDAY.



While the new Sorento very capably handles your everyday demands, it also raises the bar with a go-anywhere disposition and spirited performance that makes the journey a real joy. You have a choice between a 185-hp 2.4L Gasoline Direct Injection (GDI) engine and available 240-hp turbocharged 2.0L GDI or 290-hp 3.3L GDI V6. To go even further off the beaten track, Sorento offers the available Dynamax™ advanced all-wheel-drive (AWD) system that continuously monitors driving conditions and makes adjustments automatically to optimize grip. Go where you want the way you want – in the 2016 Sorento.



#### DYNAMAX™ ALL-WHEEL DRIVE.

The available Dynamax™ AWD system uses electronic sensors to monitor road conditions and driving scenarios. When enhanced traction and control are required, the system helps distribute power to the appropriate wheels and also distributes torque during acceleration and cornering.

#### SPORTMATIC® TRANSMISSION

A six-speed automatic transmission provides smooth, seamless shifting. Its Sportmatic® function allows you to choose the automatic mode or clutch-free manual shifting for a sportier driving experience.

#### EFFICIENT PERFORMANCE

The available 240-hp turbocharged 2.0L GDI engine and the 290-hp 3.3L GDI V6 deliver truly outstanding performance. They are also engineered for impressive fuel efficiency.

#### SUBSTANTIAL TOWING CAPACITY

The available 3.3L Gasoline Direct Injection (GDI) V6 engine produces 252 lb.-ft. of torque, giving Sorento an impressive maximum towing capacity of 2,268 kg (5,000 lb.).<sup>6</sup>

#### SMOOTH, PRECISE HANDLING

A four-wheel independent suspension features dual-flow dampers, front MacPherson struts, and a rear multilink design for smooth performance and precise handling.

# ENHANCED DRIVER AWARENESS. ADVANCED OCCUPANT PROTECTION.

Sorento offers advanced technologies that help the driver become more aware of potential hazards around the vehicle – such as available Blind Spot Detection.<sup>1</sup> Should an accident prove unavoidable, you can take comfort in the fact Kia has given the unthinkable a tremendous amount of thought. A series of passive safety systems are designed to help protect the passenger compartment – from a safety cage design that’s fortified with ultra-high-tension steel to a six-airbag SRS system. Clearly, the more thought Kia puts into Sorento’s safety, the greater your peace of mind.



Available SX+ interior<sup>11</sup>



## ULTRA-HIGH STRENGTH

Sorento features a uniquely engineered body that combines various high-tensile strength steel alloys. The body structure not only helps provide excellent crash protection – it also contributes to better driving dynamics and to the remarkably quiet ride.

## 1. SMART CRUISE CONTROL.<sup>1</sup>

This available system uses a radar sensor at the front of the vehicle to monitor the distance to the vehicle ahead. To preserve a predetermined safe distance, the system will apply the brakes, reducing Sorento’s speed, until the vehicle ahead proceeds.

## 2. 360° CAMERA MONITORING SYSTEM.<sup>1</sup>

The available 360° camera monitoring system utilizes four cameras, located at the front, rear, and sides, to provide visibility all around the vehicle. This helps enhance the driver’s view when maneuvering into parking spaces.

## 3. BLIND SPOT DETECTION (BSD).<sup>1</sup>

This available system uses radar sensors to monitor approaching vehicles from the rear in the lanes flanking the driver. If a vehicle is detected, a visual alert appears on the sideview mirrors.

## 4. REAR PARKING SONARS.<sup>1</sup>

A sonar system is concealed in the rear bumper. When you back up, an audible warning is given if the system detects objects behind your vehicle.



# KIA, DELIVERING ON A PROMISE.

At Kia, we make a promise to everyone who drives our vehicles – a promise to design, engineer and build our vehicles to the most rigorous, world-class standards. This promise guides the development of vehicles that embody Kia’s signature style, precision engineering, outstanding performance, innovative features and advanced safety systems. Our dedication to quality and value has been widely recognized – one reason why Kia has been named a Top 100 brand in Interbrand’s Best Global Brands 2014 report.

In addition, Kia earned two prestigious J.D. Power awards, one for Highest Ranked Large Car in Initial Quality in the U.S. for Cadenza and Highest Ranked Small SUV in Initial Quality in a Tie in the U.S. for Sportage.<sup>7</sup> This honour recognizes our success at producing fuel-efficient and affordable vehicles. While the accolades are always welcome, our mission extends beyond impressing the industry or media. What makes us most proud is exceeding your expectations of a truly exemplary driving and ownership experience.



GT4 Stinger concept

## STUNNING DESIGN

Under the direction of renowned President and Chief Design Officer Peter Schreyer — Kia vehicles have captured worldwide attention for their interior and exterior styling, which represents the collaborative work of designers who have created a look that makes every Kia recognizable at first sight. Today, the lineup consists of vehicles that fill owners as well as Kia’s designers with pride.

## EXTENSIVE RESEARCH AND DEVELOPMENT

Kia’s R&D procedures are rigorous and exhaustive. At proving grounds around the world, vehicles undergo unrelenting tests. A world-class wind tunnel provides testing in winds up to 200 km/h. Utilizing heavy-rain-and-snowfall testing chambers and a road simulator, Kia puts its vehicles through punishing tests as part of a commitment to develop exceptionally durable and safe vehicles.

## IMPRESSIVE WARRANTY PROGRAM

Kia engineers are passionate about producing vehicles that are exceptionally well-designed and reliable. Their dedication to quality and attention to detail give Kia the confidence to back every model with an outstanding warranty program.

## TAKING ON THE COMPETITION

The Kia Racing team is dedicated to competing against world-class competition — and winning. That dedication is part of Kia’s belief that the knowledge gained in competition can be applied to the entire Kia lineup to provide you with vehicles that perform beyond your expectations. The Kia Racing team includes championship-winning drivers with proven track records, and after two podium finishes early in the 2014 season you can look for Kia in the winner’s circle at racetracks across North America in the future.



### MAJOR LEAGUE SOCCER 2015

Three Teams. Three Passionate Fanbases. Kia is a proud founding partner of all three Major League Soccer teams in Canada.



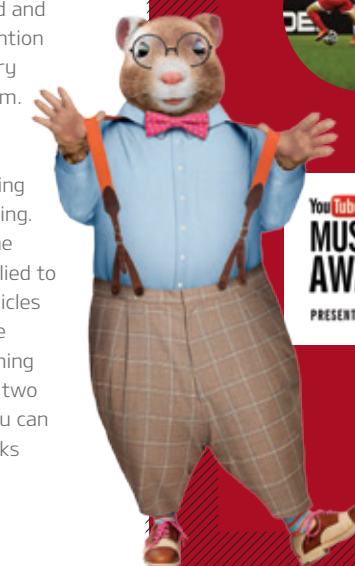
### FIFA WOMEN'S WORLD CUP CANADA 2015

One of the highlights of the summer of 2015 here in Canada is the FIFA Women’s World Cup. Played at venues from coast to coast – in Ottawa, Moncton, Montreal, Winnipeg, Edmonton and Vancouver – the event is fuelling Canadians’ passion for the “beautiful game”. As the FIFA Official co-Automotive Partner, Kia is proud of its initiatives to promote soccer globally – and to be part of many of the world’s leading sporting events.



### YOUTUBE MUSIC AWARDS PRESENTED BY KIA

Kia’s relationship with the YouTube Music Awards builds on the special relationship between music and drivers. It is demonstrated by Kia partnering with numerous music events around the globe. It’s just one more way that Kia stays in tune with the people who drive their vehicles.





# FEATURES AND SPECIFICATIONS

Exterior	LX	LX+	EX	SX
17" alloy wheels	●	●	-	-
18" machined finish alloy wheels	-	-	●	-
19" polished alloy wheels	-	-	-	●
P235/65R17 LRR tires	●	●	-	-
P235/60R18 LRR tires	-	-	●	-
P235/55R19 tires	-	-	-	●
Temporary spare tire	●	●	●	●
Dual-flow dampers (shocks)	●	●	●	●
Escort lighting system	●	●	●	●
Front LED positioning lights (bar-type)	●	●	-	-
Front LED positioning lights (bulb-type)	-	-	●	●
Projection headlights	●	●	●	●
Automatic headlights	●	●	●	●
Auto-leveling High Intensity Discharge (HID) Xenon headlights	-	-	-	●
LED light bar taillights	-	-	-	●
Fog lights	●	●	●	-
Quad - LED fog lights	-	-	-	●
Panoramic sunroof	-	-	+	●
Power, heated sideview mirrors with integrated turn signals	●	●	●	●
Power folding sideview mirrors	-	-	●	●
Variable intermittent front windshield wipers	●	●	●	●
Heated windshield wiper de-icer	●	●	●	●
Intermittent rear wiper with washer	●	●	●	●
Noise reducing windshield	-	●	●	●
Solar glass	●	●	●	●
Privacy glass	●	●	●	●
Noise reducing front door glass	-	-	-	●
Chrome door handles	●	●	●	●
Illuminated stainless steel front door scuff plates	-	-	-	●
Rear spoiler	●	●	●	●
Black radiator grille	●	●	-	-
Glossy black radiator grille	-	-	●	-
Dark metallic radiator grille	-	-	-	●
Silver painted skid plate	-	-	●	-
Stainless steel skid plate	-	-	-	●
Black calipers	-	-	-	●
Body-coloured wheel arches and door garnish	-	-	-	●
Roof rails	●	●	●	-
Chrome roof rails	-	-	-	●
Deluxe oval chrome exhaust	-	-	-	●
Front and rear splash guards	●	●	●	●

Safety	LX	LX+	EX	SX
Dual advanced front airbags	●	●	●	●
Dual front seat-mounted side impact airbags	●	●	●	●
Dual side impact curtain airbags (1 <sup>st</sup> and 2 <sup>nd</sup> rows)	●	●	●	●
4-wheel anti-lock braking system (ABS)	●	●	●	●
Electronic stability control (ESC)	●	●	●	●
Vehicle stability management (VSM) <sup>1</sup>	●	●	●	●
Hill assist control (HAC)	●	●	●	●
Height-adjustable front seatbelts with pretensioners	●	●	●	●
Lower anchors and tethers for children (LATCH)	●	●	●	●
Child-safety rear door locks	●	●	●	●
Impact sensing door unlock	●	●	●	●
Rear parking sonars <sup>1</sup>	●	●	●	●
Rearview camera <sup>1</sup>	-	●	●	●
360 <sup>o</sup> camera monitoring system (4 cameras) <sup>1</sup>	-	-	-	+
Rear cross-traffic alert <sup>1</sup>	-	-	●	●
Blind spot detection system <sup>1</sup>	-	-	●	●
Lane departure warning system <sup>1</sup>	-	-	-	+
Front collision warning system <sup>1</sup>	-	-	-	+

## Seating & Trim

	LX	LX+	EX	SX
7-passenger seating	-	V6	V6	V6
Stain-resistant cloth seats (YES Essentials®) <sup>9</sup>	●	●	-	-
Leather seats	-	-	●	-
Premium leather seats	-	-	-	●
Premium Nappa leather seats and deluxe trim	-	-	-	+
Heated front seats	●	●	●	●
Heated 2 <sup>nd</sup> row seats	-	-	-	●
Air-cooled front seats	-	-	-	●
Driver's seat height adjuster	●	●	●	●
Split folding 2 <sup>nd</sup> row seating	●	●	●	●
Sliding 2 <sup>nd</sup> row seats	-	V6	V6	V6
Quick-fold 2 <sup>nd</sup> row seats	-	V6	V6	V6
2-way power driver's seat lumbar support	●	●	-	-
4-way power driver's seat lumbar support	-	-	●	●
Driver's seat memory function	-	-	●	●
8-way power adjustable driver's seat	-	●	-	-
10-way power adjustable driver's seat	-	-	●	●
8-way power adjustable passenger seat	-	-	-	●
Leather-wrapped steering wheel and gear shift knob	-	●	●	●
Alloy pedals	-	-	-	●

● = Standard - = Not available + = Plus package V6 = V6 package

Comfort & Convenience	LX	LX+	EX	SX
Air conditioning	●	●	●	●
Rear air conditioning controls	-	V6	V6	V6
Dual-zone fully automatic climate control	-	-	●	●
Cabin air filter	●	●	●	●
Cluster ionizer	-	-	●	●
Auto de-fog system	-	-	●	●
Rear window defroster	●	●	●	●
AM/FM/CD/MP3/satellite <sup>®8</sup> stereo	●	●	●	●
6-speaker audio system	●	●	●	-
Premium Infinity™ by Harman audio system <sup>4</sup>	-	-	-	●
UVO™ infotainment system <sup>2</sup>	-	●	●	-
Voice-activated navigation system with 8" multimedia interface <sup>5</sup>	-	-	-	●
AUX and USB ports	●	●	●	●
USB charging port	●	●	●	●
Bluetooth® hands-free cell phone connectivity <sup>3</sup>	●	●	●	●
Dual front power outlets	●	●	●	●
115V power inverter	-	-	●	●
Rear cargo power outlet	●	●	●	●
Steering wheel-mounted audio controls	●	●	●	●
Steering wheel-mounted cruise control	●	●	●	●
Smart cruise control <sup>1</sup>	-	-	-	+
Drive Mode Select (Normal/ECO/Sport)	●	●	●	●
7-inch Supervision TFT LCD instrument cluster	-	-	●	●
Trip computer	●	●	●	●
Power door locks	●	●	●	●
Central door lock (driver & passenger)	●	●	●	●
Remote keyless entry with panic function	●	●	●	●
Smart key with push-button start	-	●	●	●
Smart power liftgate	-	-	-	●
Power windows	●	●	●	●
Obstacle detecting driver window	●	●	●	●
Obstacle detecting windows (all)	-	●	●	●
Express up/down driver's window	●	●	●	●
Express up/down windows (all)	-	●	●	●
Integrated 2 <sup>nd</sup> row sunshades	-	-	●	●
Electronic parking brake	-	-	-	+
Tilt and telescopic steering wheel	●	●	●	●
Heated steering wheel	-	-	●	●
Sunglass holder	●	●	●	●
Auto-dimming rearview mirror with compass	-	●	●	-
Auto-dimming rearview mirror with HomeLink™	-	-	-	●
Illuminated vanity mirrors	●	●	●	●
Map, room & cargo lights	●	●	●	●
LED interior lighting	-	-	+	●
Interior mood lighting	-	-	●	●
Cargo screen	-	-	●	●
Trailer hitch pre-wiring	-	●	●	●

Engine	LX	LX+	EX	SX
Type	2.4L, GDI, 4-cylinder, all aluminum	2.0L, T-GDI, 4-cylinder, all aluminum	3.3L, GDI, V6, all aluminum	
Valve train	16-valve, DOHC, Dual-Cam Variable Valve Timing (D-CVVT)	16-valve, DOHC, Dual-Cam Variable Valve Timing (D-CVVT)	24-valve, DOHC, Dual-Cam Variable Valve Timing (D-CVVT)	
Horsepower	185 hp @ 6,000 rpm	240 hp @ 6,000 rpm	290 @ 6,400 rpm	
Torque	178 lb.ft. @ 4,000 rpm	260 lb.ft. @ 1,450-3,500 rpm	252 lb.ft. @ 5,300 rpm	
Compression ratio	11.3:1	10.0:1	11.5:1	
Intake	Variable Intake System (VIS), Electronic Throttle Control (ETC)	Twin-scroll turbo-charger, Electronic Throttle Control (ETC)	Variable Intake System (VIS), Electronic Throttle Control (ETC)	
Recommended Fuel	Regular unleaded	Regular unleaded	Regular unleaded	
Fuel management	Gasoline Direct Injection (GDI)	Gasoline Direct Injection (GDI)	Gasoline Direct Injection (GDI)	
Transmission	6-speed Sportmatic automatic	6-speed Sportmatic automatic	6-speed Sportmatic automatic	

## Dimensions, mm (in.)

Wheelbase	2,780 (109.4)
Length	4,760 (187.4)
Width	1,890 (74.4)
Height with roof rails	1,690 (66.5)
Ground clearance	185 (7.3)
Head room (front/2 <sup>nd</sup> row/3 <sup>rd</sup> row)	1,004/998/921 (39.5/39.3/36.3)
Shoulder room (front/2 <sup>nd</sup> row/3 <sup>rd</sup> row)	1,500/1,472/1,342 (59.1/58/52.8)
Leg room (front/2 <sup>nd</sup> row/3 <sup>rd</sup> row)	1,120/1,000/805 (44.1/39.4/31.7)
Hip room (front/2 <sup>nd</sup> row/3 <sup>rd</sup> row)	1,439/1,433/1,051 (56.7/56.4/41.4)

## Brakes

Type	4-wheel disc
ABS	4-sensor, 4-channel
Front, mm (in.)	320 (12.6) vented disc
Rear, mm (in.)	305 (12.0) solid disc

## Body & Chassis

Layout	Front engine, front wheel drive/all-wheel drive
Body type	High-tensile steel unibody
Front suspension	Independent, MacPherson struts, coil springs, stabilizer bar
Rear suspension	Independent, Multi-link, stabilizer bar
Steering	LX/EX: Column - Motor Driven Power Steering (C-MDPS) SX: Rack - Motor Driven Power Steering (R-MDPS)

## Curb Weight, kg (lb.)

4-cylinder FWD	1,680-1,738 (3,704-3,832)
4-cylinder AWD	1,742-1,800 (3,840-3,968)
Turbo FWD	1,759-1,895 (3,878-4,178)
Turbo AWD	1,816-1,952 (4,004-4,303)
V6 AWD	1,860-1,970 (4,101-4,343)

## Capacities, L (cu. ft.)

	5-Seater	7-Seater
Interior volume	4,145 (146.4)	4,365 (154.1)
Cargo capacity (behind 1 <sup>st</sup> row)	2,082 (73.5)	2,066 (73)
Cargo capacity (behind 2 <sup>nd</sup> row)	1,099 (38.8)	1,077 (38)
Cargo capacity (behind 3 <sup>rd</sup> row)	-	320 (11.3)
Fuel tank capacity, L (Imp. gal.)	71 (15.6)	71 (15.6)

## Fuel Economy, Highway/City, L/100km

2.4L FWD	8.2/11.1
2.4L AWD	9.2/11.4
2.0L Turbo FWD	8.6/11.7
2.0L Turbo AWD	9.3/12.3
3.3L AWD	9.4/13.4



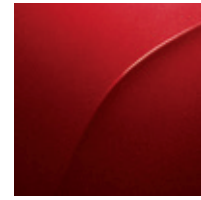
Starting with the 2015 model year, Natural Resources Canada in conjunction with the automotive manufacturers, have introduced a new testing procedure that will result in higher fuel consumption ratings that are more representative of everyday driving. Kia Canada is one of the first automotive manufacturers to implement the new testing practice and would like to ensure you fully understand the difference. The new procedure incorporates 3 additional test cycles that account for air conditioner usage, cold temperature operation, and higher speeds with more rapid acceleration and braking. To learn more, please visit: <http://oee.nrcan.gc.ca/fcr-rcf/public/index-e.cfm>

## EXTERIOR COLOURS

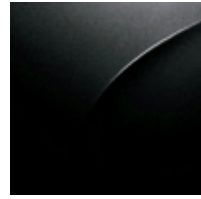
Sparkling Silver (M)  
BC/BL/BPL/BNL



Regency Red (P)  
BC/BL/BPL/BNL



Ebony Black  
BC/BL/GL/BPL/BNL/WNL



Graphite (M)  
BC/BL/GL



Snow White Pearl (P)  
BC/BL/GL/BPL/BNL/WNL



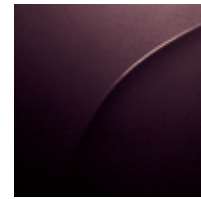
Blaze Blue (M)  
BC/BL/GL



Titanium Silver (M)  
BC/BL/BPL/BNL



Dark Cherry (M)  
BC/BL/BPL/BNL



M = Metallic, P = Pearl. The exterior and interior colours in this brochure are as close to the actual vehicle production colours as the printing process allows.

## INTERIOR COLOURS

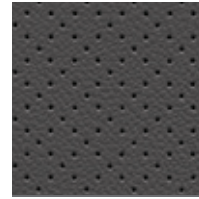
Black Cloth (BC)



Black Leather (BL)



Grey Leather (GL)



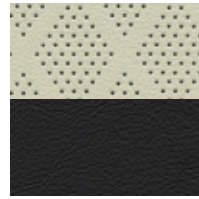
Black Premium Leather (BPL)



Nappa Leather Two-tone Titanium/Black (BNL)



Nappa Leather Two-tone Off-white/Black (WNL)<sup>11</sup>



## WHEELS

17" alloy wheels



18" machined-finish alloy wheels

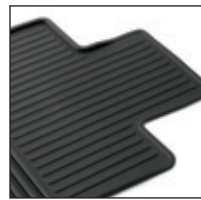


19" polished alloy wheels



## ACCESSORIES

All-season Floor Mats



Roof Cargo Box



Trailer Hitch



Kia Genuine Parts and Accessories are engineered by Kia and installed by professionals at your Kia dealer. For more information on the full line of available Genuine Kia Parts and Accessories, see your local Kia dealer, visit [www.kia.ca](http://www.kia.ca) or call 1-877-542-2886.

## Get the points.

Kia Member Rewards is an exclusive rewards program for Kia customers.

As a Kia Rewards Member, you'll earn points with every dollar you spend on maintenance service, parts and accessories at your servicing Kia dealer. Those Reward Points can be redeemed for discounts on future purchases – including the purchase of a new Kia. Plus earn Bonus Points on select items and services to collect rewards even faster.

### Kia Member Rewards No-Charge Benefits include:

- Fuel fill-up with the delivery of your new Kia vehicle

### Become a Kia Premium Rewards Member:

Ask your Kia Dealer how you can enjoy even more benefits.

### Enroll Today:

Becoming a Kia Rewards Member is easy. See your Kia Dealer today to join. Visit [rewards.kia.ca](http://rewards.kia.ca) for full terms and conditions.



- Local shuttle service
- Multi-point vehicle inspection with every service visit
- Windshield washer fill-up with every paid service
- Windshield wiper installation with wiper purchase
- Preferential rates on car rentals, nationwide
- 24/7 Roadside Assistance for your vehicle under Kia's 5-year/100,000 km warranty or Certified Pre-Owned warranty
- Email notification of exclusive Kia specials and events – a great way to earn Reward Points and save on future purchases



## We've got you covered.

At Kia, we believe peace of mind should come standard with every vehicle we make. That's why we back every model with one of the best warranties in the industry.

### Our outstanding warranty coverage includes:

5-year/100,000 km – Worry-free comprehensive warranty covering virtually the entire vehicle<sup>10</sup>


5-year/100,000 km – Powertrain warranty covering the engine, transmission, axles, differentials and driveshafts<sup>10</sup>

5-year/100,000 km – Roadside assistance covers you in case of mechanical breakdown anywhere in North America<sup>10</sup>

5-year/unlimited km – Anti-perforation warranty on body sheet metal defects in material/workmanship<sup>10</sup>

For more information visit [kia.ca](http://kia.ca) or call 1-877-542-2886

1. Blind-spot detection, Front collision warning system, 360° camera monitoring system, Smart cruise control, Lane departure warning system, Rear cross-traffic alert, Vehicle stability management, rear parking sonars and rearview camera are not substitutes for proper and safe driving procedures. 2. Microsoft® is a registered trademark of Microsoft Corporation in Canada and/or other countries. Failure to pay attention to travel conditions and vehicle operation while the vehicle is in motion could result in loss of vehicle control. Operate the UVO system, even with voice commands, only when it is safe to do so. 3. The Bluetooth® word mark and logos are registered trademarks owned by Bluetooth SIG, Inc. A compatible Bluetooth wireless technology-enabled cell phone is required to use Bluetooth hands-free wireless technology. 4. Infinity® is a registered trademark of Harman International Industries, Incorporated. 5. When equipped with the navigation system, French voice commands may be limited. 6. When properly equipped. Do not exceed any weight ratings and follow all towing instructions in your Owner's Manual. 7. Kia Sportage received the lowest number of problems per 100 vehicles among small SUVs in a tie in the proprietary J. D. Power 2014 U.S. Initial Quality StudySM. Kia Cadenza received the lowest number of problems per 100 vehicles among large cars in the proprietary J. D. Power 2014 U.S. Initial Quality StudySM. The 2014 study is based on responses from 86,118 new-vehicle owners, measuring 239 models and opinions after 90 days of ownership. Proprietary study results are based on experiences and perceptions of owners surveyed in February-May 2014. Your experiences may vary. Visit [jdpower.com](http://jdpower.com) 8. Service available in the 10 provinces and three territories of Canada, and the 48 contiguous states of the U.S. Monthly subscription sold separately after three trial months. 9. YES Essentials® is a registered trademark of SAGE Automotive Interiors Inc. 10. The Kia 5-year/100,000-km warranty includes various warranties and roadside assistance. Some restrictions apply. For more information call us at 1-877-542-2886 or visit to [kia.ca](http://kia.ca). 11. Off-white Nappa Leather, late availability.

 [facebook.com/kiacanada](https://facebook.com/kiacanada)

 [twitter.com/kiacanada](https://twitter.com/kiacanada)

 [youtube.com/kiacanada](https://youtube.com/kiacanada)

[kia.ca](https://kia.ca)



The Power to Surprise



SORENTO

All information contained herein was accurate and correct at the time of printing. Kia Canada Inc. reserves the right to make changes at any time without notice, and without any obligations as to colours, materials, specifications, features, accessories, packages, models and any applicable programs. Some vehicles shown may include optional equipment or may not be exactly as shown. Kia Canada Inc., by the publication and dissemination of this material, does not create any warranties, either expressed or implied, to any Kia products. See your Kia dealer or website for further details. Reproduction of the contents of this material without the expressed written approval of Kia Canada Inc. is prohibited. © Copyright 2015 Kia Canada Inc. Printed in Canada, February 2015.

Part# 99999 03UME16