

*A CAR IS NOT A LABEL.*



*A car is an orchestration of thousands of complex,  
moving and synchronizing parts.  
It should be more than a fashion accessory.  
More than a status symbol in the form of a badge.  
Nowhere is this more true than in an Acura.  
Because a car, especially a luxury car, should be  
one of substance.*

*GET THE STORY  
BEHIND THE  
STORY.*

*Wherever you see a button  
or icon like the ones below,  
additional content exists  
containing more information  
on the featured technology.  
To experience it, simply click  
and enjoy.*

WATCH  
THE  
VIDEO



1986	1987	1988	1989	1990	1991	1992	1993	1994	1995	1996	1997	1998	1999	2000	2001	2002	2003	2004	2005	2006	2007	2008	2009	2010	2011
<b>LEGEND</b> The world's first Japanese luxury-brand vehicle.	<b>INTEGRA</b> Integra available in 3- or 5-door hatchback.	<b>INTEGRA</b> Winner of the IMSA International Sedan Series Manufacturer's Championship.	<b>LEGEND</b> First Acura with a standard driver's airbag.	<b>INTEGRA</b> Second-generation Integra introduced.	<b>NSX</b> The first all-aluminum sports car, and first use of VTEC technology.	<b>VICOR</b> First 5-cylinder engine from Acura.	<b>LEGEND</b> Best-selling luxury import, sixth year in a row.	<b>LEGEND</b> First 6-speed manual transmission offered in an Acura.	<b>TL</b> First generation of midsize sport sedan introduced.	<b>RL</b> First vehicle with in-dash satellite-linked navigation.	<b>CL</b> First luxury import brand to assemble vehicles in the U.S.	<b>INTEGRA</b> RealTime Racing wins SCCA World Challenge Touring two Championships.	<b>TL</b> First Acura with dual-stage driver and passenger side airbags.	<b>INTEGRA TYPE-R</b> The 195-hp "Ultimate Integra" sold in limited numbers.	<b>MDX</b> First luxury SUV with 3rd-row seating.	<b>RSX</b> Introduction of i-VTEC technology.	<b>TSX</b> Premium sport sedan launches.	<b>TL</b> First vehicle to offer Bluetooth wireless technology.	<b>RL</b> First vehicle to offer SH-AWD and XM NavTraffic.	<b>RDX</b> First Variable Flow Turbo-charged engine from Acura.	<b>MDX</b> First Acura with Active Damper System and tuning at Nürburgring.	<b>TSX</b> Redesigned TSX debuts at New York Auto Show.	<b>TL</b> First brand with across-the-brand NHTSA 5-star crash safety ratings.*	<b>ZDX</b> First vehicle from Acura's new design studio in California.	<b>TSX SPORT WAGON</b> The first sport wagon offered by Acura.

**LOOKING BACK AT 25 YEARS OF LOOKING FORWARD.**

*When we launched the Acura Legend in 1986, its very existence constituted a first. In the years since, we've never stopped innovating. As we enter our second quarter-century, we continue to build on what we've learned, as well as search for new breakthroughs. Because when you're building the next generation of luxury vehicles, you don't stick with the status quo – you advance.*



[CLICK TO VIEW A MODEL BROCHURE:](#)



SAFETY

Advanced Compatibility  
Engineering™ Body Structure

WATCH  
THE  
VIDEO

**A LOGO CANNOT SAVE YOUR LIFE.**

*Of all the feelings that driving a luxury vehicle elicits, a sense of security is the most important. It's why we incorporate safety into virtually every aspect of design. The chassis of every Acura features an Advanced Compatibility Engineering (ACE®) body structure. Unlike competitive designs that just absorb frontal crash energy, ACE uses a network of structural elements to help redirect crash energy around the cabin and away from you.*

COMFORT

Active Damper System

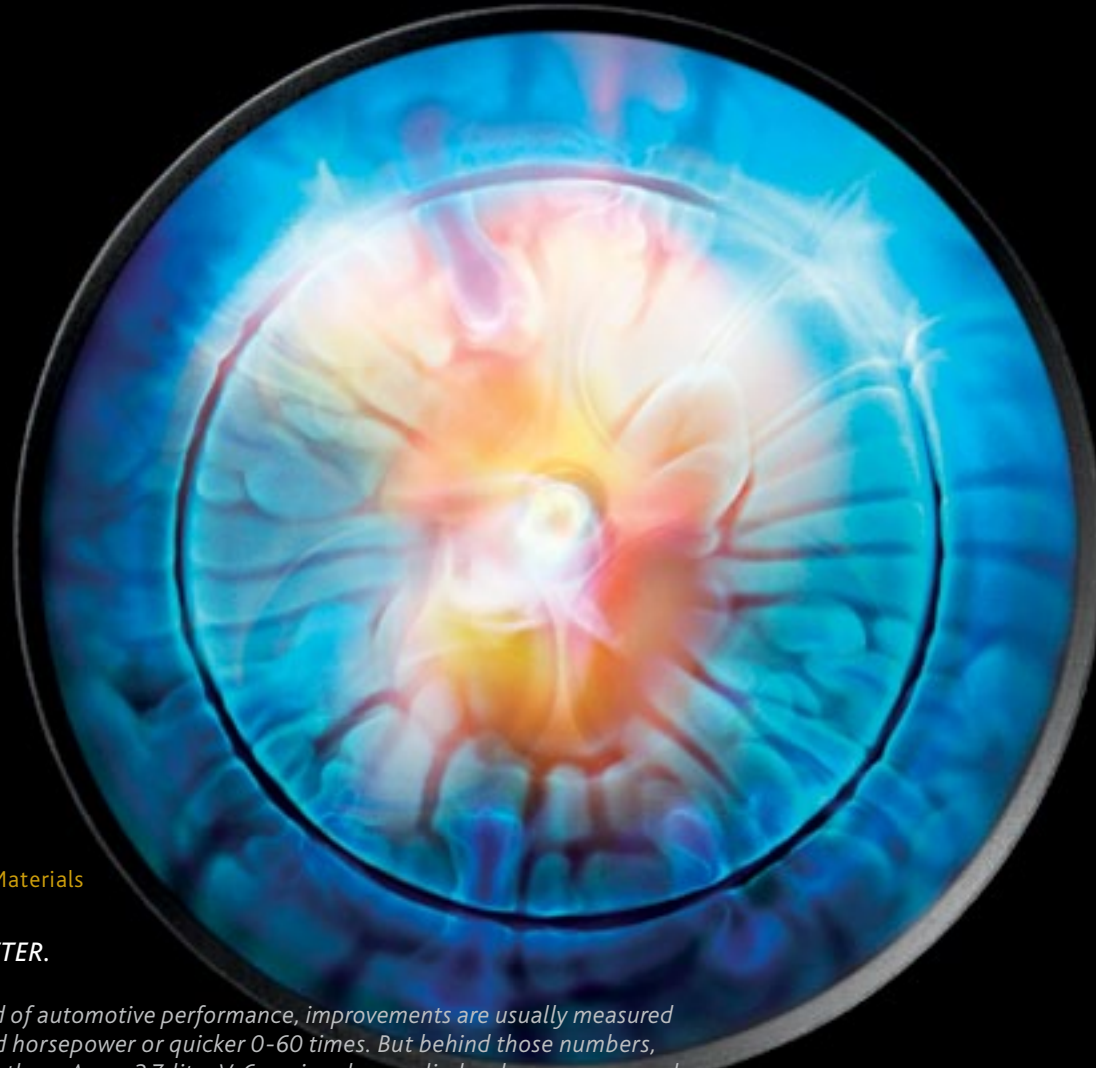
WATCH  
THE  
VIDEO

***SUBSTANCE IN THE FORM OF  
A MAGNETO-RHEOLOGICAL  
SUBSTANCE.***

*This is innovation at the molecular level. A liquid that instantly thickens in the presence of an electromagnetic charge, creating the intricate shape you see here.*

*Inside the Acura Active Damper System, it responds by increasing resistance, changing the vehicle's ride quality from smooth and luxurious to tight and sporty in as little as 5 milliseconds.*

*The system continuously monitors road conditions and driver input, giving you greater control and more responsive handling.*



PERFORMANCE

Advanced Materials



**.0001 BETTER.**

*In the world of automotive performance, improvements are usually measured in increased horsepower or quicker 0-60 times. But behind those numbers, you'll find others. Acura 3.7-liter V-6 engines have cylinder sleeves composed of a silicon-embedded aluminum alloy. Engineered to stay cooler, this helps maintain a tolerance between the sleeves and the pistons that can be as little as nearly zero millimeters wide. Translation: more power is put to use. Along with systems like VTEC<sup>®</sup> valve management, it's one of the measures we employ to help our engines perform beyond their displacement.*



QUALITY

Laser Parts Verification



**A SINGLE PART, BROKEN DOWN INTO 1,000,000 PARTS.**

*Imagine that every pushpin used to create this work of art was an inspection point. This still vastly underrepresents the amount of scrutiny it can take to verify even a single part. Using lasers accurate to within the width of a human hair, technicians compare auto parts to their CAD-file counterparts at up to 1,000,000 points to ensure precision. This attention to detail results in the tightest fit possible, helping our vehicles perform better and last longer.*

PERFORMANCE

Super Handling All-Wheel Drive

WATCH  
THE  
VIDEO

**TO SEE HOW SUPER HANDLING  
ALL-WHEEL DRIVE™ WORKS,  
TOGGLE LEFT AND RIGHT.**

*Unlike most competitive all-wheel-drive systems that simply transfer power between the front and the rear wheels, SH-AWD® also directs rear power from side to side. Take a turn, and up to 100% of available rear power is sent to the outside wheel, which is also rotated slightly faster. The combination of these forces literally pushes the vehicle through the curve, giving you a level of handling prowess unmatched by conventional all-wheel drive.*







PERFORMANCE

Nürburgring Testing

WATCH  
THE  
VIDEO

**ANYONE CAN MAKE  
A CLAIM. YOU GO TO  
NÜRBURGRING TO  
MAKE A STATEMENT.**

*13 miles. 170 curves. Zero room for error. Known simply as the "Ring" to driving enthusiasts, the Nürburgring Nordschleife circuit in Germany is considered the toughest natural road course in the world. It's not a place you'd expect to find a vehicle that seats seven. In developing the driving characteristics of the MDX, we spent weeks there honing the vehicle's suspension, brakes and steering. So when we call the MDX a driver's SUV, it's something we went to considerable lengths to back up.*



TECHNOLOGY Information Systems



**A DRIVER. A CAR. A SATELLITE. A DATABASE. A CONVERSATION.**

*As the world becomes an ever-increasing web of connectivity, an Acura is engineered to be the ultimate link. Voice recognition gives you control over the Bluetooth® HandsfreeLink,<sup>2</sup> Navigation System<sup>3</sup> and, with Song by Voice® technology, the music on the vehicle's hard disk drive or a USB-connected iPod.<sup>4</sup>*

*A blind spot information system (BSI) scans adjacent lanes and warns if it detects a vehicle that could be out of the driver's field of vision.\**

*AcuraLink® keeps you abreast of what various automotive systems are up to as well as the current driving conditions with XM NavTraffic® and NavWeather.™<sup>5</sup> GPS-linked climate control tracks the position of the sun and it maintains temperature settings accordingly. It's all designed to keep you informed, entertained and comfortable.†*

\*The system is not a substitute for your own visual assessment before changing lanes; system accuracy will vary based on weather, size of object and speed. †Some features require available Technology or Advance Package.

CLICK TO VIEW A MODEL BROCHURE:



#### TECHNOLOGY

#### Active Sound Control



#### **OUR SPEAKERS CAN CREATE AN INTERESTING SOUND. SILENCE.**

*Most speakers only create sound. Ours can also take it away. Active Sound Control in the ZDX, RL and TSX V-6 uses microphones to constantly monitor engine noise.*

*When unwanted noise is detected, opposing frequencies are broadcast through the speakers to eliminate it, literally fighting sound with sound. It even works when the vehicle's audio system is turned off. The result is dramatically reduced engine noise for a quieter, more comfortable cabin.*

TECHNOLOGY

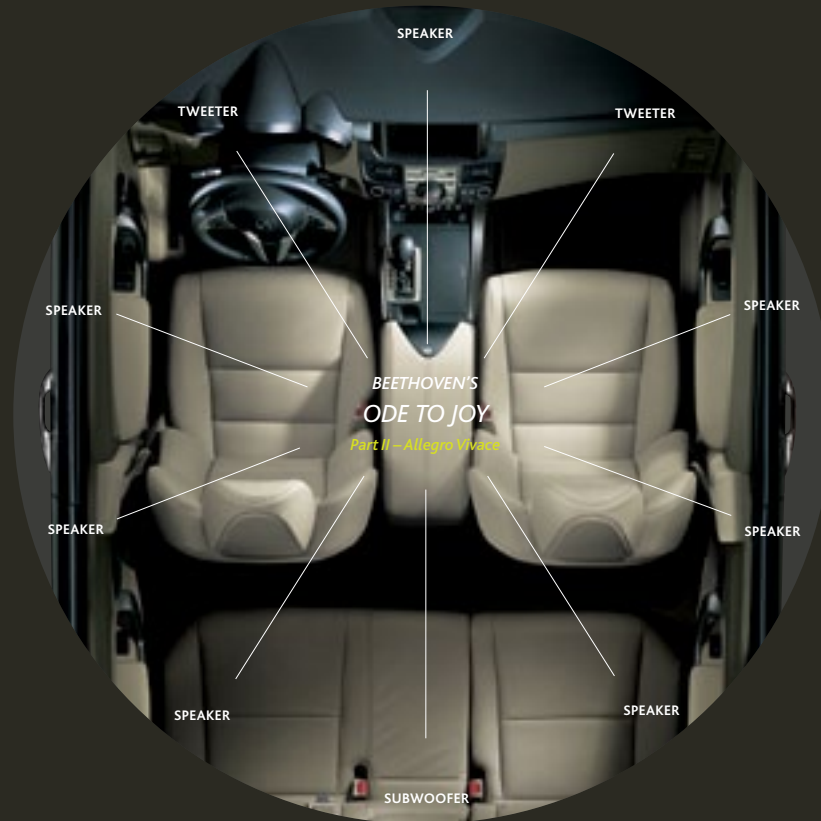
Acura/ELS Surround®  
Premium Audio System

WATCH  
THE  
VIDEO

**AN AUDIO SYSTEM  
IS NOT A CAR PART.**

*For tuning engines, transmissions and suspension systems, we rely on automotive engineers. When we set out to create a world-class audio system, we looked for expertise elsewhere. Six-time GRAMMY® Award-winning recording engineer Elliot Scheiner was an obvious choice.*

*Working with our engineers, Scheiner helped create the Acura/ELS Surround Premium Audio System\*, and then precisely tuned the 5.1 system to take advantage of the unique sound field created by each vehicle's cabin. The result is music that matches the depth and nuance of the original studio recording.*



\*ELS Surround Audio System included with Technology Package on ZDX, MDX, TL, TSX and RDX. RDX shown with available Technology Package.

SAFETY

Collision Mitigation Braking System

WATCH  
THE  
VIDEO

**SAFETY IS MORE THAN  
20 SYSTEMS DESIGNED  
TO LOOK OUT FOR YOU.  
SOME, QUITE LITERALLY.**

*It never hurts to have an extra eye on the road. The available Collision Mitigation Braking System™ (CMBS™) on the RL, MDX and ZDX is designed to do just that, alerting you of a possible collision and helping to lessen its impact.*

*Along with systems like Vehicle Stability Assist™ (VSA®), Brake Assist and Electronic Brake Distribution (EBD), it's proof that keeping you out of harm's way has always been one of our top priorities.*



A DRIVER IS MOMENTARILY DISTRACTED.

A POTENTIAL COLLISION IS DETECTED.

AUDIO AND VISUAL ALERTS WARN THE DRIVER.

SEAT BELT TUGS TO FURTHER ALERT DRIVER.

BRAKES APPLY LIGHT PRESSURE.

SEAT BELT TIGHTENS, STRONG BRAKING ENSUES.\*

\*Depending on the circumstances, CMBS may not go through all of the alert stages before initiating the last stage (of collision mitigation).

CLICK TO VIEW A MODEL BROCHURE:



CRAFTSMANSHIP

Hand-Worked Materials

WATCH  
THE  
VIDEO

**TECHNOLOGY HAS TAUGHT US WHEN NOT TO USE TECHNOLOGY.**

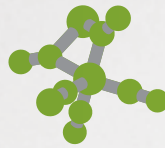
*There are times when the most sophisticated equipment known to man, is man. So even in this era of automation, it still takes more than 1,400 people to assemble an Acura. Whether it's stretching the leather around a piece of the dash or sanding sheet metal prior to painting, there are still numerous times when the recognition of a human eye, and the skill of a human hand, are required to meet the level of precision we demand of every vehicle.*



Tri-level railway cars used to transport vehicles saved 125,481 gallons of diesel fuel in 2009.



Distribution of parts in a diesel-electric hybrid truck reduces CO<sub>2</sub> emissions by 15% compared to conventional tractor trailers.



In 2009, CO<sub>2</sub> emissions were reduced by 3,970 metric tons at two Acura plants.



More than 90% of the RDX parts are made from recyclable materials.



Efficiently utilized shipping crates used for parts distribution save over 704 metric tons of CO<sub>2</sub> emissions per year.



Total water used for manufacturing reduced by 128 million gallons in 2010.



All Acura vehicles have been 90% recyclable since 2004.



Repairing and recycling manufacturing pallets kept 136,350 of them out of landfills in 2010.



Receiving our first ULEV rating in 2001, now every Acura is recognized as an ultra-low emissions vehicle.



A parts consolidation center at the Marysville plant reduces CO<sub>2</sub> emissions from parts transportation by 90 metric tons per year.



In 2009, the Marysville plant earned the EPA's ENERGY STAR for superior energy efficiency.



Landfill waste from manufacturing activity reduced by 65% from the previous year.



Corrugated packaging materials were reduced by nearly 1.5 million pounds in the last two years.



"Intelligent" paint booths reduce CO<sub>2</sub> emissions from painting operations by as much as 25%.



All Acura manufacturing plants will achieve zero waste-to-landfill by April 2011.



Alliston and Marysville plants saved more than 840,000 cubic meters of natural gas in 2009.



Reduced use of packaging materials saved more than 635,000 pounds of wood in 2009.

## ENVIRONMENT

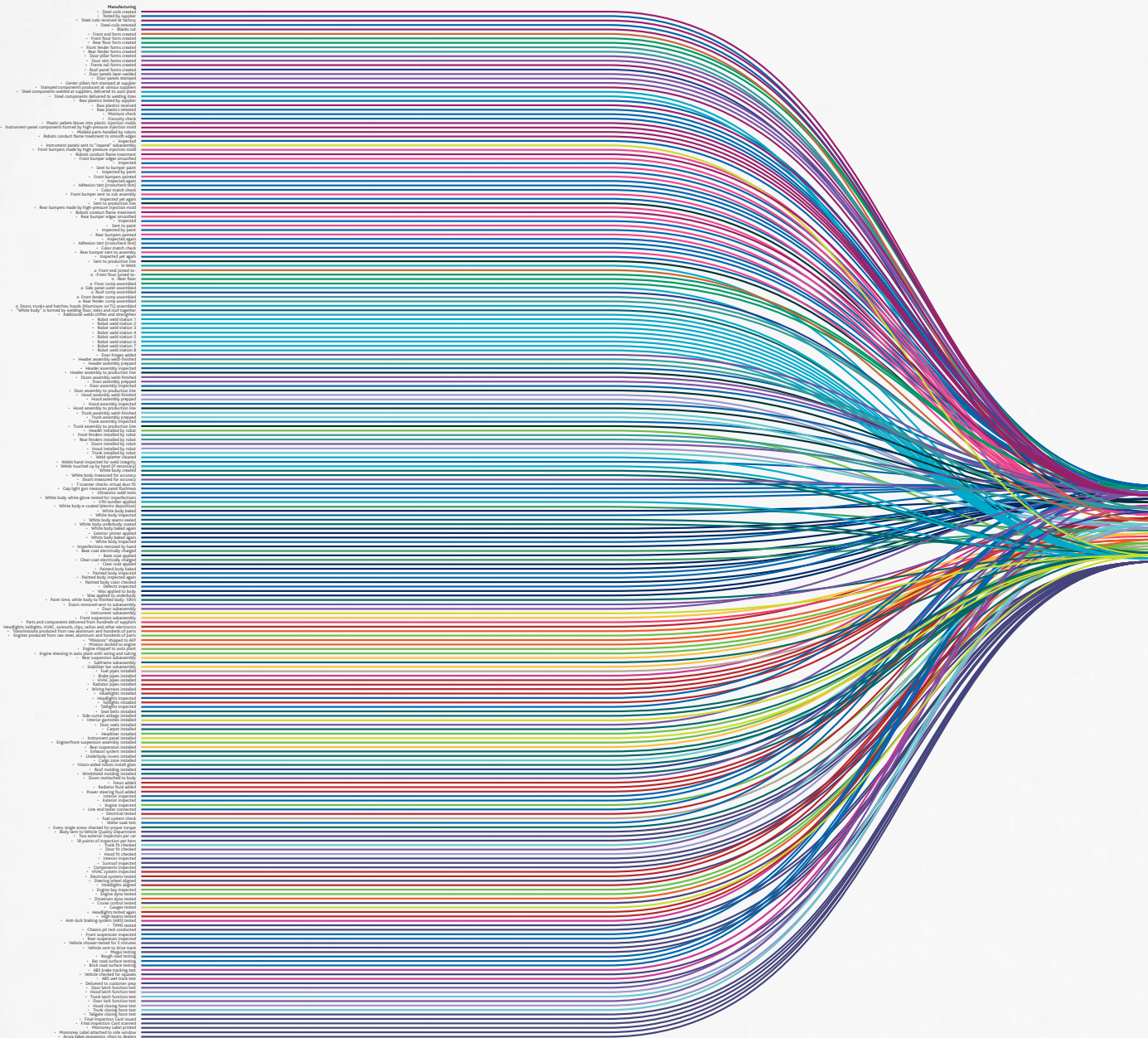
### Waste and Pollution Reduction



### ***SUBSTANCE AS DEFINED AS A DESIRE TO LEAVE LESS SUBSTANCE BEHIND.***

*A program to recycle manufacturing pallets is never going to be a top news item. But that doesn't mean it isn't worth doing. While just about every car company is trying to burnish their "green" credentials, Acura has spent the last decade changing the way we make our vehicles, drastically reducing the amount of waste and pollutants. When it comes to managing our environmental impact, we're always looking for more ways to do less.*

CLICK TO VIEW A MODEL BROCHURE:



**THOUSANDS OF STEPS.  
ONE DIRECTION.**



*Just as an Acura is a perfectly synchronized orchestration of parts, so too is the process by which it is made. And as complex as this chart appears, it is merely the last stage in that process.*

*Before the first roll of sheet metal enters the factory, our engineers are working with our designers to ensure their ideas survive. For example, the TL designers felt the thin strips of metal that extend above the taillights were crucial components in giving the vehicle its aggressive looks. To make them a reality, the engineers had to invent a new kind of conveyor belt, one that wouldn't deform the parts as they cooled. Similar measures throughout the manufacturing process help ensure that every Acura is everything we say it is.*



ACURA BRAND BROCHURE

2012 RL

2012 TL

2012 TSX

PLEASE MAKE A SELECTION.



2012 ACURA BRAND

©2011 Acura. Acura, CL, Integra, Integra Type-R, Legend, MDX, NSX, RDX, RL, RSX, TL, TSX, Vigor, ZDX, the stylized "A" logo, AcuraLink, AcuraLink Real-Time Traffic and Weather, Acura Navigation System with Voice Recognition, Advanced Compatibility Engineering (ACE), Collision Mitigation Braking System (CMBS), HandsFreeLink, Song By Voice, Super Handling All-Wheel Drive (SH-AWD), Vehicle Stability Assist (VSA), VTEC and i-VTEC are trademarks of Honda Motor Co., Ltd. Covered by patent rights issued and/or pending. Specifications, features, illustrations and equipment shown in this catalog are based upon the latest available information at the time of publication. Although descriptions are believed to be correct, accuracy cannot be guaranteed. All images contained herein are either owned by American Honda Motor Co., Inc., or used under a valid license. It is a violation of federal law to reproduce these images without express written permission from American Honda Motor Co., Inc., or the individual copyright owner of such images. American Honda Motor Co., Inc., reserves the right to make changes at any time, without notice or obligation, in colors, specifications, accessories, materials and models. The *Bluetooth*® word mark and logos are owned by the *Bluetooth* SIG, Inc., and any use of such marks by Honda Motor Co., Ltd., is under license. ELS Surround is a registered trademark of Panasonic Corporation of North America. All rights reserved. GRAMMY is a registered trademark of The Recording Academy and is used under license. iPod is a registered trademark of Apple Inc. The XM name, XM NavTraffic® and XM NavWeather™ are trademarks of Sirius XM Radio Inc. and its subsidiaries. Zagat Survey® is a registered trademark of Zagat Survey, LLC. Make an intelligent decision. Fasten your seat belt. <sup>1</sup> Government star ratings are part of the National Highway Traffic Safety Administration's (NHTSA's) New Car Assessment Program ([www.safercar.gov](http://www.safercar.gov)). Models tested with standard side-impact airbags (SABs). <sup>2</sup> Visit [www.handsfreelink.com](http://www.handsfreelink.com) for a list of compatible phones and available features. <sup>3</sup> Navigation system available in the 48 contiguous United States and Hawaii. MDX, TL, TSX, and ZDX coverage includes Alaska. See your local Acura dealer for current navigation system area coverage. <sup>4</sup> The USB Audio Interface is used for direct connection to and control of some current digital audio players and other USB devices that contain MP3, WMA, or AAC music files. Some USB devices with security software and digital rights-protected files may not work. Please see your dealer for details on compatibility. <sup>5</sup> AcuraLink Real-Time Traffic and Weather™ require monthly premium XM NavTraffic® and NavWeather™ subscriptions. Navigation-equipped vehicles include 90 days of XM NavTraffic and NavWeather service. XM NavTraffic is only available in select markets.



2012 RL



# RL

*FOR LUXURY AT ITS MOST ADVANCED,  
EVERY PART HAS A PART.*

# T

*The moment you climb into the cabin of the RL, you'll gain an immediate understanding of the kind of thinking and craftsmanship that went into making the vehicle a supremely accommodating sanctuary. Seats, mirrors, climate-control and audio settings all welcome you aboard by adjusting to your preferences. Rich leather adorns seats, steering wheel and shift knob, as well as other contact points. In addition, the front seats pamper with multiple heat settings, and with the Technology Package, three levels of cooling.*

*And while the vehicle's material richness is indulging your sense of touch, the Bose® Surround Sound System is more than adept at satisfying your audio needs. The system's 10 acoustically positioned speakers provide sound that resembles a high-end home set-up. The Active Sound Control system helps keep unwanted engine noise from competing for your attention. The new industry-first noise-reducing wheel technology also contributes to a quieter cabin.*

CLICK TO VIEW A MODEL BROCHURE:



**I**  
*An undeniable feeling of power is evident the moment you take control of the vehicle's 300-hp, 3.7-liter engine. Employing Acura's signature VTEC® system, it utilizes two separate camshaft profiles to satisfy the competing needs of low-end torque and high-end horsepower. The result is an exhilarating rush off the line, and power in reserve down the road. A high-inertia intake manifold helps keep airflow optimized while a dual exhaust system ensures unrestricted flow out of the engine, also a vital ingredient for performance. Aluminum construction keeps the engine lighter for improved handling and less vibration.*

CLICK TO VIEW A MODEL BROCHURE:



*As sumptuous as the RL cabin may be, the last thing you want to feel is cut off from the rest of your world. Designed with the idea that knowledge is power, the RL works to keep you fully informed of what's happening inside the cabin, and out. The available Acura Navigation System<sup>1</sup> features available continuously updated traffic and weather information,<sup>2</sup> as well as Zagat<sup>®</sup> restaurant reviews. The screen also doubles as a display for the available rearview camera. AcuraLink<sup>®</sup> technology can even help you get basic diagnostic information via your Bluetooth<sup>®</sup>-connected phone.<sup>3</sup>*

---

[CLICK TO VIEW A MODEL BROCHURE:](#)



CLICK TO VIEW A MODEL BROCHURE:



||

*One mark of a luxury vehicle is its ability to satisfy just about any need. With systems like the available GPS-linked, solar-sensing climate control, the RL can often accomplish this with no action on your part. In those instances when you do need to make your desires known, just a few words will suffice. Voice recognition gives you intimate control of a number of systems, including navigation, Bluetooth HandsFreeLink,<sup>®3</sup> and many features of the vehicle's audio and climate control systems.*



### III

*The Acura RL is proof that inspiration can be engineered. The vehicle's performance technologies have been tuned to deliver exhilarating response while also keeping you firmly in control. Chief among these is Super Handling All-Wheel Drive™ (SH-AWD®). Unlike most competitive systems, SH-AWD can sense where extra torque is needed, then distribute power not only between the front and back but also side to side among the rear wheels. In turns, the system can send up to 100% of available rear power to the outside wheel, then spin that wheel slightly faster for tighter cornering. These forces help the RL track with a precision unmatched by conventional all-wheel drive.*





[CLICK TO VIEW A MODEL BROCHURE:](#)

# W

*With a goal of keeping driver and passengers out of harm's way, Acura engineers incorporated safety technology into every aspect of the RL. It starts with the vehicle's Advanced Compatibility Engineering™ (ACE™) body structure. This exclusive design uses a network of structural elements to help reduce frontal crash energy transferred to the passenger compartment.*

*The RL also features numerous systems designed to help keep collisions from happening in the first place. This includes the available Collision Mitigation Braking System™ (CMBS™), which can sense an imminent collision and take steps to alert the driver to avoid it if possible, and help minimize its impact if not.\**



\*Depending on the circumstances, CMBS may not go through all of the alert stages before initiating the last stage (of collision mitigation).

CLICK TO VIEW A MODEL BROCHURE:

*The 2012 Acura RL.  
IT REDEEMS ANY CONCESSIONS MADE  
DURING THE REST OF YOUR DAY.*



## OWNER BENEFITS

When you purchase a vehicle with the exceptional quality of an Acura, you expect service and support to be of the same caliber. After all, a premium automobile is only part of the ownership experience. With Acura, you also get a commitment. To personalized care. To attentive service. This commitment is apparent the moment you first enter an Acura dealership and for years down the road. It comes from a belief that every aspect of owning an Acura should be an enjoyable and rewarding experience.

**Warranty<sup>4</sup>** All Acura vehicles and Acura accessories installed by the dealer at the time of vehicle purchase have a 4-year/50,000-mile limited warranty. Acura vehicles are also covered by a 6-year/70,000-mile limited powertrain warranty. In addition, outer-body rust-through is covered on all Acura vehicles by a 5-year/unlimited-mile limited warranty.

**Acura Financial Services<sup>5</sup>** Whether you're buying or leasing, this program can assist you with the process.

**Acura Care<sup>®</sup>** Comprehensive vehicle and travel protection beyond the initial warranty period enhances peace of mind. See your Acura dealer for features and benefits available with this program.



**Total Luxury Care<sup>®</sup> (TLC<sup>®</sup>)<sup>6</sup>** As an Acura owner, you'll enjoy services like Trip-Interruption benefits, a 24-hour Roadside Assistance program and Acura Concierge,<sup>™</sup> which offers help in an emergency or when you're planning a trip.

**1-800-to-Acura** Operators are available 24 hours a day to help get answers to your Acura questions.

**My Acura** Your complimentary MyAcura personalized website provides the most current information about your vehicle, gives you tips on how to care for your Acura and lets you schedule service appointments online.

### Accessories

When it comes to personalizing, choose Acura genuine accessories that are crafted to the same strict levels of quality as the rest of your RL. See your Acura dealer for a complete list of accessories or go to [acura.com](http://acura.com).

### [acura.com](http://acura.com)

Visit us online for the latest specifications, MSRPs and special offers. You can also apply for financing or even request a price quote from an Internet-certified Acura dealer.

## PERFORMANCE

300-hp, 3.7-liter, 24-valve, SOHC VTEC<sup>®</sup> V-6 engine / 6-speed automatic transmission with Sequential SportShift paddle shifters / Super Handling All-Wheel Drive<sup>™</sup> (SH-AWD<sup>®</sup>) / 4-wheel independent suspension: double wishbone front / multi-link rear / Electronic variable power-assisted rack-and-pinion steering / 18-inch aluminum-alloy, noise-reducing wheels with P245/45 R18 96V high-performance all-season tires

## SAFETY

Advanced Compatibility Engineering<sup>™</sup> (ACE<sup>™</sup>) body structure / Vehicle Stability Assist<sup>™</sup> (VSA<sup>®</sup>) with traction control / 4-wheel anti-lock braking system (ABS) with Electronic Brake Distribution (EBD) and Brake Assist / Dual-stage, multiple-threshold front airbags (SRS), front side airbags and side curtain airbags / Active front head restraints

## STANDARD RL FEATURES

Dual-zone, dual-mode automatic climate control system / Keyless Access System with Acura personalized settings / Bluetooth<sup>®</sup> HandsFreeLink<sup>®</sup> wireless telephone interface<sup>3</sup> / Active Sound Control / Electronic tilt and telescopic steering column / Perforated leather-trimmed interior / Driver's and front passenger's heated, power-adjustable seats / Acura/Bose<sup>®</sup> 10-speaker Surround Sound System with XM<sup>®</sup> Radio,<sup>7</sup> 6-disc in-dash CD, DVD-Audio changer / USB Audio Interface with iPod<sup>®</sup> integration<sup>8</sup> / Bluetooth Audio / Power moonroof with tilt feature / Auto-on/off xenon high-intensity discharge (HID) headlights / Fog lights

## TECHNOLOGY PACKAGE (Adds to or replaces standard RL features)

Acura Navigation System with Voice Recognition<sup>™1</sup> and rearview camera / AcuraLink Real-Time Traffic and Weather<sup>™2</sup> / Traffic Rerouting<sup>™2</sup> / GPS-linked, solar-sensing, dual-zone, dual-mode automatic climate control system / Active Front Lighting System (AFS) / Body-colored rear parking sensors / Ventilated front seats / Simulated wood-grained steering wheel and gearshift knob trim

## ADVANCE PACKAGE (Includes Technology Package)

Collision Mitigation Braking System<sup>™</sup> (CMBS<sup>™</sup>) / Adaptive Cruise Control (ACC) / Genuine wood trim / Power-folding side mirrors

## SPECIFICATIONS

Estimated Fuel Mileage<sup>9</sup> (City/Highway/Combined): 17 | 24 | 20 / Fuel Tank Capacity: 19.4 U.S. gallons / Required Fuel:<sup>10</sup> Premium unleaded 91 octane / Curb Weight: 4099 lbs / Curb Weight with Technology Package: 4112 lbs / Curb Weight with Advance Package: 4112 lbs / Headroom (Front/Rear): 38.5 in | 37.2 in / Legroom (Front/Rear): 42.4 in | 36.3 in / Shoulder Room (Front/Rear): 58.5 in | 56.1 in / Hiproom (Front/Rear): 55.1 in | 54.0 in / EPA Passenger Volume: 99.1 cu ft / EPA Cargo Volume: 13.8 cu ft / Wheelbase: 110.2 in / Length: 195.8 in / Height: 57.2 in / Width: 72.7 in

[CLICK TO VIEW A MODEL BROCHURE:](#)

## ***RL COLORS***

---

*[Click here to build your own RL.](#)*

ACURA BRAND BROCHURE

2012 RL

2012 TL

2012 TSX

PLEASE MAKE A SELECTION.



2012 RL  
©2011 Acura. Acura, RL, the stylized "A" logo, Acura Care, Acura Concierge, AcuraLink, AcuraLink Real-Time Traffic and Weather, Acura Navigation System with Voice Recognition, Advanced Compatibility Engineering (ACE), Automated Appointments, Collision Mitigation Braking System (CMBS), HandsFreeLink, Super Handling All-Wheel Drive (SH-AWD), Total Luxury Care (TLC), Traffic Rerouting, Vehicle Stability Assist (VSA) and VTEC are trademarks of Honda Motor Co., Ltd. Covered by patent rights issued and/or pending. Acura reserves the right to limit TLC services or reimbursements to any owner or driver when, in the judgment of Acura, the claims become excessive in frequency or type of occurrence. Acura also reserves the right to alter or withdraw the Acura Roadside Assistance Program, or any other part of the Acura TLC Program, at any time without notice. Specifications, features, illustrations and equipment shown in this catalog are based upon the latest available information at the time of publication. Although descriptions are believed to be correct, accuracy cannot be guaranteed. All images contained herein are either owned by American Honda Motor Co., Inc., or used under a valid license. It is a violation of federal law to reproduce these images without express written permission from American Honda Motor Co., Inc., or the individual copyright owner of such images. American Honda Motor Co., Inc., reserves the right to make changes at any time, without notice or obligation, in colors, specifications, accessories, materials and models. The *Bluetooth*® word mark and logos are owned by the *Bluetooth* SIG, Inc., and any use of such marks by Honda Motor Co., Ltd., is under license. Bose® is a trademark of Bose Corporation. iPod is a registered trademark of Apple Inc. The XM name, XM NavTraffic® and XM NavWeather™ are trademarks of Sirius XM Radio Inc. and its subsidiaries. Zagat Survey® is a registered trademark of Zagat Survey, LLC. Make an intelligent decision. Fasten your seat belt. <sup>1</sup> Navigation system available in the 48 contiguous United States and Hawaii. See your local Acura dealer for current navigation system area coverage. <sup>2</sup> AcuraLink Real-Time Traffic and Weather™, as well as Traffic Rerouting™, require monthly premium XM NavTraffic® and NavWeather™ subscriptions. RL with Technology Package includes 90 days of XM NavTraffic and NavWeather service. XM NavTraffic is only available in select markets. <sup>3</sup> Visit [www.handsfreelink.com](http://www.handsfreelink.com) for a list of compatible phones and available features. <sup>4</sup> Ordinary maintenance items or adjustments, parts subject to normal wear and replacement, and certain other items are excluded. See your Acura dealer for the terms and conditions of limited warranties. <sup>5</sup> Acura Financial Services is a DBA of American Honda Finance Corporation. <sup>6</sup> See your local dealer for details about Total Luxury Care (TLC) Roadside Assistance and Concierge Service. <sup>7</sup> XM services require a subscription after 90-day trial period. Subscriptions governed by SiriusXM Customer Agreement; see [www.siriusxm.com](http://www.siriusxm.com). If you decide to continue your XM service at the end of your complimentary trial, the plan you choose will automatically be renewed and you will be billed at then-current rates until you call XM at 1-800-967-2346 to cancel. Fees and programming subject to change. Available only to those at least 18 years of age in the 48 contiguous United States and D.C. ©2011 Sirius XM Radio Inc. Sirius, XM and all related marks and logos are trademarks of Sirius XM Radio Inc. and its subsidiaries. <sup>8</sup> The USB Audio Interface is used for direct connection to and control of some current digital audio players and other USB devices that contain MP3, WMA, or AAC music files. Some USB devices with security software and digital rights-protected files may not work. Please see your dealer for details on compatibility. <sup>9</sup> Based on 2012 EPA mileage estimates. Use for comparison purposes only. Do not compare to models before 2008. Your actual mileage will vary depending on how you drive and maintain your vehicle. <sup>10</sup> Using gasoline with an octane lower than 91 may cause damage to the engine. Please consult your dealer for details.



**TL**

*More performance. More luxury.  
In short, more TL.*

2012



*Intensity, refined.*

# 3.7

---

*3.7-liter VTEC® engine  
(TL SH-AWD)*

*Its newly sculpted lines evoke a sense of anticipation. Its more sharply honed performance reinforces the bond between driver and vehicle. The 2012 Acura TL is proof that power can be thoroughly refined, yet still retain every bit of its capacity to thrill.*

*With its taut, finely tailored silhouette and more aggressive details like the darkened headlights and bold wheel design, every element speaks to the power and precision of the TL.*



[CLICK TO VIEW A MODEL BROCHURE:](#)



*Among the design influences for the TL's revised exterior was the look and feel of a high-end watch. As with a fine timepiece, the closer you look at the TL, the more intricately textured and detailed different elements become. From the use of gloss-black details to the matte-black mesh that calls to mind the aggressiveness of past TL designs, everything works together. It is this level of detail that makes the TL more intriguing and, ultimately, that much more special to its owner.*

**Jon Ikeda**  
Acura Chief Designer

*"The proportions of a vehicle tell you a lot about its nature. With its long hood and short rear deck, there is visual movement to the design. The TL just looks fast."*





*In the TL, technology is designed to work intuitively and elegantly. Many of the systems recognize your intimate needs and react, even where there is no contact.*

*This includes the available voice-activated navigation system, complete with Zagat Survey® restaurant reviews as well as available XM NavTraffic® and NavWeather™ information.<sup>1</sup>*

*Voice recognition can also be used with the available Acura/ELS Surround® Premium Audio System. The available Advance Package even includes Song By Voice® technology that lets you verbally call up music stored on your connected iPod®<sup>2</sup> or the vehicle's built-in hard drive. It's all part of the philosophy that the most powerful technology is the most easy to use.*

[CLICK TO VIEW A MODEL BROCHURE:](#)



*Despite the supreme comfort afforded by the TL cabin, this is not luxury for luxury's sake, but for the sake of the driver. From the design and placement of every control, to the improved sound insulation and available GPS-linked climate control, the goal was to create an environment free of distraction and discomfort, so you can concentrate more on the task at hand.*

**Simon Yu**  
Lead Interior Designer

*"The curved metal band on the dash was modeled after the spray a power boat makes as it carves through the water. Its concave shape creates a feeling of spaciousness for front passengers."*

10-way power  
driver's seat

10

*Mechanical precision, infused with human warmth.*

*Inside the TL, you'll find that refinement was anything but an afterthought. The spacious cabin invites you in with expertly crafted details, rich leather and front seats that offer multiple levels of heating as well as available ventilation. With the available Technology Package, the seats are trimmed in glove-soft full-grain Perforated Milano Premium Leather. The TL also anticipates your needs with memory-adjust seats, mirrors, and climate and audio settings. It all contributes to an environment that is at the same time relaxing and invigorating.*



[CLICK TO VIEW A MODEL BROCHURE:](#)

*While the TL may look like a pure design statement, it is, strictly speaking, a purpose-built machine. As such, every element has been fashioned to be authentic to its purpose. From the shape of the air-intake vents to the angle of the rear spoiler, nothing is superfluous. Nothing unnecessary.*



[CLICK TO VIEW A MODEL BROCHURE:](#)



*Damon Schell*  
Lead Exterior Designer

*"The two key words in designing the new TL were sophisticated workmanship. Think of an Italian suit maker who really gets into the details of his work."*

*Translating driver will  
into reality.*

# 4

---

*4-wheel independent suspension*

*Accelerate. Shift. Turn. Brake.  
How well a vehicle reacts to  
driver input depends to a large  
extent on what's happening  
behind the scenes. To that end,  
the TL chassis incorporates  
high-tensile steel to make it  
both light and rigid.*

*This firm foundation allows  
Acura engineers to tune the  
fully independent suspension  
system more precisely. The  
suspension system also features  
advanced damper valves and  
high roll stiffness for a flatter  
ride and more direct response  
to steering input.*





*The choice of two potent engines gives you two ways to generate pulse-quicken power.*

*Both the 280-hp, 3.5-liter and the TL SH-AWD's 305-hp, 3.7-liter engine utilize Acura's signature VTEC technology for uninterrupted power throughout the rpm range. A new 6-speed automatic transmission gives the TL not only quicker acceleration, but also improved fuel efficiency.<sup>3</sup>*

*The 3.7-liter engine features machined aluminum/silicon cylinder liners for increased strength and heat transfer. Mechanical etching inside the cylinders exposes the silicon crystals, helping reduce friction for better performance. The TL SH-AWD also offers driving enthusiasts an available close-ratio 6-speed manual transmission that lets you keep the shift points exactly where you want them.*

**Jon Ikeda**  
Acura Chief Designer

*"When a car is built for performance, when it has some muscle, you want to show that off. You want to wrap it in a lean body."*

[CLICK TO VIEW A MODEL BROCHURE:](#)



*One of the thrills of driving a high-performance sport sedan is exploring the vehicle's potential. The TL's speed-sensitive steering and sport-tuned suspension give you a lot of room for fun. The TL SH-AWD extends the performance parameters even further with the addition of Acura's exclusive Super Handling All-Wheel Drive™ (SH-AWD®). Accelerate through a curve and SH-AWD can send up to 100% of available rear-wheel power to the outside wheel and then turn that wheel slightly faster, dramatically improving the vehicle's turning force to help the TL and its driver achieve a higher level of control.*

*New for 2012, the blind spot information system (included with the Advance Package) utilizes radar sensors to alert you to the presence of vehicles located outside your field of vision.\**

\*The system is not a substitute for your own visual assessment before changing lanes; system accuracy will vary based on weather, size of object and speed.



*Keeping you in touch,  
in control and inspired.*

7

---

*7,000,000 points of interest*

*While the sport-tuned suspension and Super Handling All-Wheel Drive work to keep you firmly connected to the road, systems like the available Acura Navigation System keep you connected to the world beyond.*

*Its destination database contains 7,000,000 points of interest, from the nearest gas station to local hotels and cultural destinations. The system can even dial for a reservation through your compatible Bluetooth®-enabled cell phone.<sup>†</sup>*



*A sanctuary.  
And at times, a fortress.*

# 6

---

*Advanced six-airbag system*

*Luxury features are by no means the only technologies designed to help keep life's harsher elements at bay. The Advanced Compatibility Engineering™ (ACE®) body structure can help distribute frontal crash energy more evenly, helping reduce the forces transferred to the passenger cabin.*

*Safety systems designed to help keep collisions from happening in the first place include Vehicle Stability Assist™ (VSA®), which can detect a loss of traction and take appropriate action to help keep you in control.\**



\*VSA is not a substitute for safe driving. It cannot correct the vehicle's course in every situation or compensate for reckless driving. Control of the vehicle always remains with the driver.

## Owner Benefits

---

When you purchase a vehicle with the exceptional quality and reliability of an Acura, you expect service and support to be of the same caliber. After all, a premium automobile is only part of the ownership experience. With Acura, you also get a commitment. To personalized care. To attentive service. This commitment is apparent the moment you first enter an Acura dealership and for years down the road. It comes from a belief that every aspect of owning an Acura should be an enjoyable and rewarding experience.

**Warranty<sup>5</sup>** All Acura vehicles and Acura accessories installed by the dealer at the time of vehicle purchase have a 4-year/50,000-mile limited warranty. Acura vehicles are also covered by a 6-year/70,000-mile limited powertrain warranty. In addition, outer-body rust-through is covered on all Acura vehicles by a 5-year/unlimited-mile limited warranty.

**Acura Financial Services<sup>6</sup>** Whether you're buying or leasing, we can assist you with the process.

**Acura Care<sup>®</sup>** Comprehensive vehicle and travel protection beyond the initial warranty period enhances peace of mind. See your Acura dealer for features and benefits available with this program.

**Total Luxury Care<sup>®</sup> (TLC<sup>®</sup>)<sup>7</sup>** As an Acura owner, you'll enjoy services like Trip-Interruption benefits, a 24-hour Roadside Assistance program and Acura Concierge<sup>™</sup> which offers help in an emergency or when you're planning a trip.

**1-800-to-Acura** Operators are available 24 hours a day to help get answers to your Acura questions.

**My Acura** Your complimentary My Acura personalized website provides the most current information about your vehicle, gives you tips on how to care for your Acura and lets you schedule service appointments online.

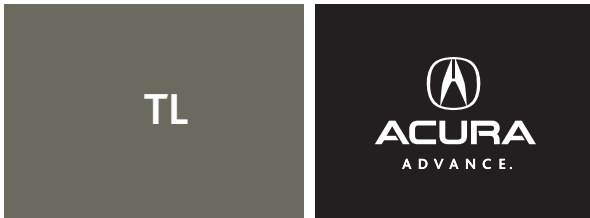
**Accessories** When it comes to personalizing, choose Acura Genuine Accessories that are crafted to the same strict levels of quality as the rest of your TL. See your Acura dealer for a complete list of accessories or go to [acura.com](http://acura.com).

**acura.com** Visit us online for the latest specifications, MSRPs and special offers. You can also apply for financing or even request a price quote from an Internet-certified Acura dealer.



### STANDARD TL FEATURES

- 280-hp, 3.5-liter, 24-valve, SOHC VTEC® V-6 engine
- 6-speed automatic transmission with Sequential SportShift paddle shifters
- Front-wheel drive
- 4-wheel independent suspension: double wishbone front / multi-link rear
- Electric variable power-assisted rack-and-pinion steering (EPS)
- 17-inch aluminum-alloy wheels, P245/50 R17 98V high-performance all-season tires
- Dual-zone, dual-mode adaptive climate control system
- Remote entry system with Acura personalized settings
- Bluetooth® HandsFreeLink® telephone interface<sup>4</sup>
- Leather-trimmed interior
- Driver's and front passenger's heated, power-adjustable seats
- Acura 276-watt Premium Sound System with XM® Radio,<sup>8</sup> 6-disc in-dash CD changer, Dolby® Pro Logic® II and 8 speakers, including 8-inch subwoofer
- USB Audio Interface with iPod® integration<sup>2</sup>
- Bluetooth Audio
- Power moonroof with tilt feature
- Auto-on/off xenon high-intensity discharge (HID) headlights
- Fog lights



### TL SH-AWD FEATURES (Adds to or replaces standard TL features)

- 305-hp, 3.7-liter, 24-valve, SOHC V-6 engine with intake/exhaust VTEC
- Close-ratio 6-speed manual transmission (Requires Technology Package)
- Super Handling All-Wheel Drive™ (SH-AWD®)
- Hill start assist
- Exclusive front sport seats and steering-wheel design with contrast stitching
- 18-inch aluminum-alloy wheels, P245/45 R18 96V high-performance all-season tires

### SAFETY

- Advanced Compatibility Engineering™ (ACE™) body structure
- Vehicle Stability Assist™ (VSA®) with traction control
- 4-wheel anti-lock braking system (ABS) with Electronic Brake Distribution (EBD) and Brake Assist
- Dual-stage, multiple-threshold front airbags (SRS), front side airbags and side curtain airbags
- Active front head restraints

### TECHNOLOGY PACKAGE (Available for TL and TL SH-AWD)

- Acura Navigation System with Voice Recognition™ and rearview camera
- Acura/ELS Surround® 440-watt Premium Audio System with 10 speakers, hard disk drive (HDD) media storage, in-dash CD, DVD-Audio player and Dolby® Pro Logic® II
- Song By Voice®
- AcuraLink Real-Time Traffic and Weather™<sup>1</sup>
- Traffic Rerouting™<sup>1</sup>
- Keyless Access System with smart entry, pushbutton ignition and Acura personalized settings
- GPS-linked, solar-sensing, dual-zone, dual-mode adaptive climate control system
- Perforated Milano Premium Leather-trimmed interior

### ADVANCE PACKAGE (Includes Technology Package)

- Blind spot information system (BSI)
- Ventilated and heated front seats
- Aluminum-alloy wheels and tires size increase: TL to 18-inch; TL SH-AWD to 19-inch, P245/40 R19 94W high-performance all-season tires

### TL SPECIFICATIONS

- Estimated Fuel Mileage<sup>3</sup> (City/Highway/Combined)  
TL AT: 20/29/23 | TL SH-AWD AT: 18/26/21 MT: 17/25/20
- Fuel Tank Capacity 18.5 U.S. gallons
- Required Fuel<sup>9</sup> Premium unleaded 91 octane
- Curb Weight TL: 3726 lbs | TL SH-AWD: 3968 lbs
- Curb Weight with Technology Package  
TL: 3741 lbs | TL SH-AWD (AT/MT): 3982 lbs/3858 lbs
- Curb Weight with Advance Package  
TL: 3770 lbs | TL SH-AWD: 4001 lbs
- Headroom (Front/Rear) 38.4 in | 36.7 in
- Legroom (Front/Rear) 42.5 in | 36.2 in
- Shoulder Room (Front/Rear) 58.2 in | 56.2 in
- Hiproom (Front/Rear) 55.7 in | 54.8 in
- EPA Passenger Volume 98.2 cu ft
- EPA Cargo Volume TL: 13.1 cu ft | TL SH-AWD: 12.5 cu ft
- Wheelbase 109.3 in / Length 194.0 in / Height 57.2 in / Width 74.0 in

[CLICK TO VIEW A MODEL BROCHURE:](#)

## *TL COLORS*

---

*[Click here to build your own TL.](#)*

*Although the information shown here is believed to be correct, some colors and interior/exterior color combinations may be subject to change.*

ACURA BRAND BROCHURE

2012 RL

2012 TL

2012 TSX

PLEASE MAKE A SELECTION.



2012 TL  
©2011 Acura. Acura, TL, the stylized "A" logo, Acura Care, Acura Concierge, AcuraLink, AcuraLink Real-Time Traffic and Weather, Acura Navigation System with Voice Recognition, Advanced Compatibility Engineering (ACE), HandsFreeLink, Song By Voice, Super Handling All-Wheel Drive (SH-AWD), Total Luxury Care (TLC), Traffic Rerouting, Vehicle Stability Assist (VSA), and VTEC are trademarks of Honda Motor Co., Ltd. Covered by patent rights issued and/or pending. Specifications, features, illustrations and equipment shown in this catalog are based upon the latest available information at the time of publication. Although descriptions are believed to be correct, accuracy cannot be guaranteed. All images contained herein are either owned by American Honda Motor Co., Inc., or used under a valid license. It is a violation of federal law to reproduce these images without express written permission from American Honda Motor Co., Inc., or the individual copyright owner of such images. American Honda Motor Co., Inc., reserves the right to make changes at any time, without notice or obligation, in colors, specifications, accessories, materials and models. The *Bluetooth*® word mark and logos are owned by the *Bluetooth* SIG, Inc., and any use of such marks by Honda Motor Co., Ltd., is under license. Dolby, Pro Logic, and the double-D symbol are registered trademarks of Dolby Laboratories. ELS Surround is a registered trademark of Panasonic Corporation of North America. All rights reserved. iPod is a registered trademark of Apple Inc. The XM name, XM NavTraffic®, and XM NavWeather™ are trademarks of Sirius XM Radio Inc. and its subsidiaries. Make an intelligent decision. Fasten your seat belt. <sup>1</sup>AcuraLink Real-Time Traffic and Weather™ as well as Traffic Rerouting™ require monthly premium XM NavTraffic® and NavWeather™ subscriptions. Navigation-equipped vehicles include 90 days of XM NavTraffic and NavWeather service. XM NavTraffic is only available in select markets. <sup>2</sup>The USB Audio Interface is used for direct connection to and control of some current digital audio players and other USB devices that contain MP3, WMA, or AAC music files. Some USB devices with security software and digital rights-protected files may not work. Please see your dealer for details on compatibility. <sup>3</sup>Based on 2012 EPA mileage estimates. Use for comparison purposes only. Do not compare to models before 2008. Your actual mileage will vary depending on how you drive and maintain your vehicle. <sup>4</sup>Visit [www.handsfreelink.com](http://www.handsfreelink.com) for a list of compatible phones and available features. <sup>5</sup>Ordinary maintenance items or adjustments, parts subject to normal wear and replacement, and certain other items are excluded. See your Acura dealer for the terms and conditions of limited warranties. <sup>6</sup>Acura Financial Services is a DBA of American Honda Finance Corporation. <sup>7</sup>See your local dealer for details about Total Luxury Care (TLC) Roadside Assistance and Concierge service. <sup>8</sup>XM services require a subscription after 90-day trial period. Subscriptions governed by SiriusXM Customer Agreement; see [www.siriusxm.com](http://www.siriusxm.com). If you decide to continue your XM service at the end of your complimentary trial, the plan you choose will automatically be renewed and you will be billed at then-current rates until you call XM at 1-800-967-2346 to cancel. Fees and programming subject to change. Available only to those at least 18 years of age in the 48 contiguous United States and D.C. ©2011 Sirius XM Radio Inc. Sirius, XM and all related marks and logos are trademarks of Sirius XM Radio Inc. and its subsidiaries. <sup>9</sup>Using gasoline with an octane lower than 91 may cause damage to the engine.



**TSX**

*Proof that a driving enthusiast is the product of his or her environment.*

2012



---

## SPORT SEDAN

---

A case study in modern luxury, the TSX engages with its nimble athleticism, clean aesthetics and leading-edge technologies. A spirited 201-hp in-line 4-cylinder or an available 280-hp V-6 provide the power. A race-derived suspension system endows the vehicle with a firm grip and compliant ride. The vehicle's cabin offers the perfect balance between indulgence and sport. And as if this weren't enough, the 31-mpg highway rating<sup>1</sup> is sure to further inspire a few long road trips.



---

## SPORT WAGON

---

Sport in more than just name, the TSX Sport Wagon earns its badge with its driver-focused cockpit, highly efficient engine and precise response. And if your idea of sport includes more than taking on a challenging stretch of asphalt, the TSX Sport Wagon offers plenty of cargo space for your gear. Its class-leading 30-mpg highway rating<sup>1</sup> also adds to the vehicle's performance credentials.





CLICK TO VIEW A MODEL BROCHURE:

2.4-LITER i-VTEC® 4-CYLINDER

"A REV-HAPPY ENGINE"

*Motor Trend*<sup>2</sup>

3.5-LITER VTEC® V-6

***Power  
beyond  
displacement.***



The mark of an Acura engine is its ability to produce more power than its specs would suggest possible. In the TSX Sedan and Sport Wagon, this feat is accomplished by a 2.4-liter i-VTEC in-line 4. The engine's highly intelligent variable valve-timing system expertly balances the competing demands of low-end torque and high-speed horsepower, generating a constant surge throughout the power band. The sedan is also available with a V-6 for even bigger thrills. Its all-aluminum construction and hollow camshafts keep the engine lighter for a better-handling vehicle.

5-SPEED AUTOMATIC

6-SPEED MANUAL

For those looking to get the most power out of the TSX's high-revving engine, the 2.4-liter engine can be mated with a 6-speed manual transmission (Special Edition Sedan only). The close-ratio gearing ensures strong performance in any gear. Shift throws are short and the linkage direct to provide an optimal feel for confident shifting. Available with both engines, the 5-speed Sequential SportShift automatic features a cornering-G shift control that recognizes when you're in a curve and will delay upshifting to avoid having to then downshift when you hit the accelerator as you exit the curve. The automatic transmission also gives you the option of driving in fully automatic mode or, with race-inspired paddle shifters, a more hands-on approach.



---

**RIGID CHASSIS**

**4-WHEEL INDEPENDENT SUSPENSION**

---

Combining advanced metallurgy and complex physics, TSX handling technologies may seem like cold engineering. But one drive is all it takes to appreciate the finer qualities of the TSX ride. It all starts with the chassis. The strategic use of high-tensile steel keeps it both light and strong. The improved body rigidity allows the suspension to be tuned with greater precision helping the vehicle respond to driver input with minimal body roll. Speed-sensitive Electric Power Steering (EPS) lets the steering feel match the driving conditions, from parking to high-speed driving. The V-6 model gets its own suspension tuning and larger diameter wheels, further lengthening its performance parameters.



*V-6 Model Shown*

CLICK TO VIEW A MODEL BROCHURE:

***It can  
even  
improve  
your  
destination.***

ZAGAT® REVIEWS

"STATE-OF-THE-ART  
NAVIGATION AND ENTERTAINMENT  
SYSTEMS"

*Edmunds.com*<sup>5</sup>

VOICE RECOGNITION

While performance technologies are working to make your journey as enjoyable as possible, information technologies can help ensure that the same is true of your destination.

The available voice-activated Acura Navigation System features a destination database containing over 7,000,000 points of interest as well as Zagat Survey® restaurant reviews. You can even call ahead for a reservation through your connected *Bluetooth*-enabled cell phone.<sup>3</sup> The navigation system also includes available traffic and weather information,<sup>4</sup> and suggests alternative routes if necessary.



[CLICK TO VIEW A MODEL BROCHURE:](#)



[CLICK TO VIEW A MODEL BROCHURE:](#)



The TSX cockpit is a testament to the vehicle's performance characteristics. Designed to clarify the connection between driver and vehicle, the deeply bolstered driver's seat offers support through the curves. Likewise, the steering wheel and shift knob are wrapped in leather to provide a tactile feel. The 8-way power driver's seat adjustments let you quickly get into your ideal driving position.

Also helping to ensure your complete comfort is the dual-zone automatic climate control system. The available GPS-linked climate control system keeps track of the sun's relative position and intensity and automatically adjusts to compensate. On the V-6 sedan, Active Sound Control helps keep excessive engine noise in check.

*TECHNOLOGY CONTROL*

***A sports car.  
No asterisk  
required.***

*Steering Wheel-Mounted Controls  
Bluetooth HandsFreeLink®  
Multi-Purpose Interface Dial*

It wasn't just inspired by a sports car, it was derived from one. Starting with the same drivetrain and suspension technologies that make the TSX Sport Sedan so much fun to drive, the TSX Sport Wagon demands very little sacrifice for its additional cargo space.

The cabin has likewise been built with the driver in mind. As in the sedan, controls are meticulously crafted and placed for intuitive operation. Steering wheel-mounted controls give you access to a number of systems, including audio, *Bluetooth HandsFreeLink*,<sup>3</sup> and when equipped, the voice-recognition system, letting you keep your hands on the wheel and your focus on the road.



[CLICK TO VIEW A MODEL BROCHURE:](#)

The TSX Sport Wagon was purpose-built for those seeking adventure. Its class-leading 30-mpg highway rating<sup>1</sup> means you can put on a lot of miles between fill-ups, while 66.2 cubic feet of cargo space means you can make the most out of every one of them. It's no wonder it received a 2011 Consumer's Top Rated Award from Edmunds.com.<sup>6</sup>



**"IT IS SNAPPY AND  
READY TO RUN"**

---

*CNET*<sup>7</sup>





[CLICK TO VIEW A MODEL BROCHURE:](#)

With its abundant space, the TSX Sport Wagon literally expands the definition of sports-car performance. The cargo area's carpeted floor and flat sidewalls make for easier loading and unloading, as does the available remote-linked, power-operated tailgate.

Additional storage compartments found throughout the cabin, including six within easy reach of the driver, ensure that there's a place for everything.



*Acura reminds you to properly secure items in the cargo area.*



***Some of our smartest thinking went into systems you may never use.***

As anyone will tell you, the best collision is the one that didn't happen. With that in mind, both the TSX Sedan and Sport Wagon feature technologies designed to help keep you out of harm's way. These include Electronic Brake Distribution (EBD), Brake Assist and Vehicle Stability Assist™ (VSA®) which can sense potential understeer or oversteer and brake individual wheels to help keep you on your intended path.

To help lessen the negative effects when a collision is unavoidable, both chassis feature Acura's Advanced Compatibility Engineering™ (ACE™) body structure. In a frontal crash, ACE helps direct energy around the passenger compartment, away from those inside.

SONG BY VOICE®

"ACURA HAS ANOTHER WINNER  
ON ITS HANDS"

*Road & Track*®

HARD DISK DRIVE  
MEDIA STORAGE

***The best  
stereo in  
the house,  
isn't.***

Individually tuned to both the TSX Sedan and Sport Wagon's interior dimensions, the available Acura/ELS Surround® Premium Audio System adds immeasurably to the rich experience of driving a TSX. Developed with the help of GRAMMY® Award-winning engineer and producer Elliot Scheiner, it was designed to recreate the feel of the original studio recording. The 10-speaker system features XM® Radio<sup>9</sup> and can play DVD-Audio discs as well as the songs stored on the internal hard disk drive (HDD) or your USB-connected iPod.<sup>10</sup> Song By Voice technology lets you verbally make a selection based on song, artist or album.



[CLICK TO VIEW A MODEL BROCHURE:](#)

## ***Refinement, redefined.***

### ***TSX SPECIAL EDITION***

The new TSX Special Edition starts with the crisp, machined lines of the TSX, then adds unique front corner spoilers, rear bumper and side sills, as well as darker aluminum-alloy wheels. The cabin is outfitted with aluminum pedals, red stitching and instrument illumination, and special Lux Suede® seat inserts and door panels. It's all designed to further highlight the sporty nature of the vehicle.



*Special Edition Available Late September, 2011*

[CLICK TO VIEW A MODEL BROCHURE:](#)



*Special Edition Available Late September, 2011*

## Owner Benefits

---

When you purchase a vehicle with the exceptional quality and reliability of an Acura, you expect service and support to be of the same caliber. After all, a premium automobile is only part of the ownership experience. With Acura, you also get a commitment. To personalized care. To attentive service. This commitment is apparent the moment you first enter an Acura dealership and for years down the road. It comes from a belief that every aspect of owning an Acura should be an enjoyable and rewarding experience.

**Warranty**<sup>11</sup> All Acura vehicles and Acura accessories installed by the dealer at the time of initial vehicle purchase have a 4-year/50,000-mile limited warranty. Acura vehicles are also covered by a 6-year/70,000-mile limited powertrain warranty. In addition, outer-body rust-through is covered on all Acura vehicles by a 5-year/unlimited-mile limited warranty.

**Acura Financial Services**<sup>12</sup> Whether you're buying or leasing, we can assist you with the process.

**Acura Care**<sup>®</sup> Comprehensive vehicle and travel protection beyond the initial warranty period enhances peace of mind. See your Acura dealer for features and benefits available with this program.

**Total Luxury Care**<sup>®</sup> (TLC)<sup>13</sup> As an Acura owner, you'll enjoy services like Trip-Interruption benefits, a 24-hour Roadside Assistance program and Acura Concierge,<sup>™</sup> which offers help in an emergency or when you're planning a trip.

**1-800-to-Acura** Operators are available 24 hours a day to help get answers to your Acura questions.

**My Acura** Your complimentary My Acura personalized website provides the most current information about your vehicle, gives you tips on how to care for your Acura and lets you schedule service appointments online.

**Accessories** When it comes to personalizing, choose Acura Genuine Accessories that are crafted to the same strict levels of quality as the rest of your MDX. See your Acura dealer for a complete list of accessories or go to [acura.com](http://acura.com).

**acura.com** Visit us online for the latest specifications, MSRPs and special offers. You can also apply for financing or even request a price quote from an Internet-certified Acura dealer.



## PERFORMANCE

- 201-hp, 2.4-liter, 16-valve, DOHC i-VTEC® 4-cylinder engine
- 280-hp, 3.5-liter, 24-valve, SOHC VTEC® V-6 engine (V-6 Sedan)
- 5-speed automatic transmission with Sequential SportShift paddle shifters
- Close-ratio 6-speed manual transmission (available Special Edition only)
- Front-wheel drive
- 4-wheel independent suspension: double wishbone front / multi-link rear
- Electric variable power-assisted rack-and-pinion steering (EPS)
- 17-inch aluminum-alloy wheels with P225/50 R17 93V high-performance all-season tires (Sedan & Sport Wagon)
- 18-inch aluminum-alloy wheels with P235/45 R18 94V high-performance all-season tires (V-6 Sedan)

## STANDARD TSX FEATURES

- Dual-zone automatic climate control system with air filtration
- Remote entry system with folding key and Acura personalized settings
- Bluetooth® HandsFreeLink® wireless telephone interface<sup>3</sup>
- Active Sound Control (V-6 Sedan)
- Tilt and telescopic steering column
- Retractable cargo area cover (Sport Wagon)
- Sport seats with perforated leather-trimmed interior and contrast stitching
- Driver's and front passenger's heated, power-adjustable seats



- 60/40 split fold-down rear seatback
- Power moonroof with tilt feature
- Acura 360-watt Premium Sound System with XM® Radio,<sup>9</sup> in-dash CD player and 7 speakers, including subwoofer
- USB Audio Interface with iPod® integration<sup>10</sup>
- Bluetooth Audio
- Auto-on/off xenon high-intensity discharge (HID) headlights
- Fog lights

## SAFETY

- Advanced Compatibility Engineering™ (ACE™) body structure
- Vehicle Stability Assist™ (VSA®) with traction control
- 4-wheel anti-lock braking system (ABS) with Electronic Brake Distribution (EBD) and Brake Assist
- Dual-stage, multiple-threshold front airbags (SRS), front side airbags and side curtain airbags
- Active front head restraints

## SPECIAL EDITION (Adds to or replaces standard TSX 4-cylinder sedan features)

- Aggressive front corner spoilers, unique rear bumper fascia and side sills
- Unique color for 17-inch aluminum-alloy wheels
- Available 5-speed automatic or close-ratio 6-speed manual transmission
- Exclusive ebony Lux Suede®-trimmed interior with red accents
- Red contrast stitching on seats, steering wheel, shifter and armrest
- Red instrument illumination and ambient cabin lighting
- Silver-colored Sequential SportShift paddle shifters
- Aluminum sport pedals
- Ebony headliner

## TECHNOLOGY PACKAGE (Adds to or replaces standard features)

- Acura Navigation System with Voice Recognition™ and rearview camera
- Acura/ELS Surround® 415-watt Premium Audio System (Sport Wagon, 460 watts) with 10 speakers, hard disk drive (HDD) media storage, in-dash CD, DVD-Audio player and Dolby® Pro Logic® II
- AcuraLink Real-Time Traffic and Weather™<sup>4</sup>
- Traffic Rerouting™<sup>4</sup>
- GPS-linked, solar-sensing, dual-zone automatic climate control system
- Song By Voice®
- Remote-linked, power-operated tailgate (Sport Wagon)

## TSX SEDAN SPECIFICATIONS

- Estimated Fuel Mileage<sup>1</sup> (City/Highway/Combined) AT: 22 | 31 | 26 MT: 21 | 29 | 24
- Estimated Fuel Mileage<sup>1</sup> V-6 (City/Highway/Combined) AT: 19 | 28 | 23
- Curb Weight AT: 3479 lbs | with Technology Package AT: 3490 lbs
- Curb Weight Special Edition AT: 3486 lbs MT: 3415 lbs
- Curb Weight V-6 AT: 3659 lbs | with Technology Package AT: 3680 lbs
- Fuel Tank Capacity 18.5 U.S. gallons
- Required Fuel<sup>14</sup> Premium unleaded 91 octane
- Headroom (Front/Rear) 37.6 in | 37.0 in
- Legroom (Front/Rear) 42.4 in | 34.3 in
- Shoulder Room (Front/Rear) 57.8 in | 56.1 in
- Hiproom (Front/Rear) 55.6 in | 54.2 in
- EPA Passenger Volume 94.5 cu ft
- EPA Cargo Volume 14.0 cu ft
- Wheelbase 106.5 in / Length 185.6 in / Height 56.7 in / Width 72.4 in

## TSX SPORT WAGON SPECIFICATIONS

- Estimated Fuel Mileage<sup>1</sup> (City/Highway/Combined) 22 | 30 | 25
- Curb Weight AT: 3585 lbs | with Technology Package AT: 3609 lbs
- Fuel Tank Capacity 18.5 U.S. gallons
- Required Fuel<sup>14</sup> Premium unleaded 91 octane
- Headroom (Front/Rear) 37.6 in | 36.9 in
- Legroom (Front/Rear) 42.4 in | 34.3 in
- Shoulder Room (Front/Rear) 57.8 in | 56.1 in
- Hiproom (Front/Rear) 55.6 in | 54.2 in
- EPA Passenger Volume 94.4 cu ft
- EPA Cargo Volume (Behind First Row/Second Row) 66.2 cu ft | 31.5 cu ft
- Wheelbase 106.5 in / Length 189.2 in / Height 57.9 in / Width 72.4 in

[CLICK TO VIEW A MODEL BROCHURE:](#)

## ***TSX COLORS***

---

***TSX SEDAN***

*For TSX Special Edition colors see next page.*

*[Click here to build your own TSX.](#)*

*Although the information shown here is believed to be correct, some colors and interior/exterior color combinations may be subject to change.*



[CLICK TO VIEW A MODEL BROCHURE:](#)

## ***TSX COLORS***

---

### ***TSX SPECIAL EDITION***

*For TSX Sedan and Sport Wagon colors see previous page.*

*[Click here to build your own TSX.](#)*

ACURA BRAND BROCHURE

2012 RL

2012 TL

2012 TSX

PLEASE MAKE A SELECTION.



2012 TSX  
©2011 Acura. Acura, TSX, the stylized "A" logo, Acura Care, Acura Concierge, AcuraLink, AcuraLink Real-Time Traffic and Weather, Acura Navigation System with Voice Recognition, Advanced Compatibility Engineering (ACE), HandsFreeLink, Song By Voice, Total Luxury Care (TLC), Traffic Rerouting, Vehicle Stability Assist (VSA), i-VTEC and VTEC are trademarks of Honda Motor Co., Ltd. Covered by patent rights issued and/or pending. Specifications, features, illustrations and equipment shown in this catalog are based upon the latest available information at the time of publication. Although descriptions are believed to be correct, accuracy cannot be guaranteed. All images contained herein are either owned by American Honda Motor Co., Inc., or used under a valid license. It is a violation of federal law to reproduce these images without express written permission from American Honda Motor Co., Inc., or the individual copyright owner of such images. American Honda Motor Co., Inc., reserves the right to make changes at any time, without notice or obligation, in colors, specifications, accessories, materials and models. The *Bluetooth*® word mark and logos are owned by the *Bluetooth* SIG, Inc., and any use of such marks by Honda Motor Co., Ltd., is under license. Dolby Pro Logic, and the double-D symbol are registered trademarks of Dolby Laboratories. ELS Surround is a registered trademark of Panasonic Corporation of North America. All rights reserved. GRAMMY is a registered trademark of The Recording Academy and is used under license. iPod is a registered trademark of Apple Inc. The XM name, XM NavTraffic, and XM NavWeather are trademarks of SIRIUS XM Radio, Inc. and its subsidiaries. Zagat Survey® is a registered trademark of Zagat Survey, LLC. Make an intelligent decision. Fasten your seat belt. <sup>1</sup>Based on 2012 EPA mileage estimates. Use for comparison purposes only. Do not compare to models before 2008. Your actual mileage will vary depending on how you drive and maintain your vehicle. <sup>2</sup>*Motor Trend*, November 2010. <sup>3</sup>Visit [www.handsfreelink.com](http://www.handsfreelink.com) for a list of compatible phones and available features. <sup>4</sup>AcuraLink Real-Time Traffic and Weather™, as well as Traffic Rerouting™ require monthly premium XM NavTraffic® and NavWeather™ subscriptions. Navigation-equipped vehicles include 90 days of XM NavTraffic and NavWeather service. XM NavTraffic is only available in select markets. <sup>5</sup>*Edmunds.com*, 2011 Acura TSX Review. <sup>6</sup>*Edmunds.com*, 2011 Consumer's Top Rated Award – Wagon \$25K–\$35K. <sup>7</sup>*CNET.com* Video Review, April 2011. <sup>8</sup>*Road & Track*, June 2009. <sup>9</sup>XM services require a subscription after 90-day trial period. Subscriptions governed by XM Customer Agreement available at [xmradio.com](http://xmradio.com). If you decide to continue your XM service at the end of your complimentary trial, the plan you choose will automatically be renewed and you will be billed at then-current rates unless you call 1-800-967-2346 to cancel. Fees and programming subject to change. Available only to those at least 18 years of age in the 48 contiguous United States and D.C. ©2011 SiriusXM Radio Inc. Sirius, XM and all related marks and logos are trademarks of SiriusXM Radio Inc. and its subsidiaries. <sup>10</sup>The USB Audio Interface is used for direct connection to and control of some current digital audio players and other USB devices that contain MP3, WMA, or AAC music files. Some USB devices with security software and digital rights-protected files may not work. Please see your dealer for details on compatibility. <sup>11</sup>Ordinary maintenance items or adjustments, parts subject to normal wear and replacement, and certain other items are excluded. See your Acura dealer for the terms and conditions of limited warranties. <sup>12</sup>Acura Financial Services is a DBA of American Honda Finance Corporation. <sup>13</sup>See your local dealer for details about Total Luxury Care (TLC) Roadside Assistance and Concierge service. <sup>14</sup>Using gasoline with an octane lower than 91 may cause damage to the engine. Please see your Acura dealer for details. 9/11