

# 2016 Touareg







# Touareg



Luxury can mean many things. In the Touareg, it can refer to a refined interior with available ventilated front seats. It can denote the ease of the remote power liftgate and available Driver Assistance features. Or, it can represent the freedom a 3.6L V6 FSI® engine with 4MOTION® all-wheel drive can offer as you head out beyond the crowds, where the stars shine brighter through an available panoramic sunroof. True luxury is having it all.





## Luxury without city limits.

Powerful both in performance and in presence, the Touareg gets its fair share of attention. Its strong, confident stance and dynamic lines make a bold statement about sophistication. But its true power comes from the impressive 3.6L, 280-hp,\* FSI engine residing under the hood. Explore beyond the normal boundaries.



**280**  
HORSEPOWER\*

**265**  
LB-FT OF TORQUE

### 3.6L FSI engine

Its formidable 3.6L V6 engine leverages a dynamic 280 horsepower\* and 265 lb-ft of torque — offering an exhilarating rush for the driver and the driven.



When driving during cold, snowy, or icy weather conditions, ensure that your vehicle is equipped with appropriate all-season or winter weather tires. Even with appropriate tires, you must drive in a manner appropriate for the weather, visibility, and road conditions.

V6 Executive shown in Moonlight Blue Pearl

\*Achieved with premium fuel.





V6 Executive shown in Terracotta Brown leather



## Luxury in panorama. Redefined.

The sun just seems to shine brighter through the expansive available panoramic sunroof. And it feels downright luxurious to bask in all that sunshine and roomy cargo space. We designed it that way, of course. With space for you and your individuality. We also included thoughtful details like power outlets and a cooling glovebox. Use the available hands-free Easy Open liftgate to fill up the Touareg with your gear, groceries, and golf clubs. After all, luxury is having room to be yourself.

### STANDARD FEATURES

**64 cubic feet of cargo space with rear seats folded down.**

You don't have to travel far to enjoy wide-open space. Just fold down the rear seats and discover plenty of room for your gear.

**40/20/40-split folding rear seats.**

Full-on flexibility lets you configure your space to make the most of the cargo area, thanks to the split, sliding rear seats and adjustable seatbacks that fold down easily for maximum space. How's that for convenience?

**Remote power liftgate.**

Raise the liftgate with just your finger. Pull a switch from inside, or do it remotely by using the key fob to easily access the Touareg rear cargo space.

**Power outlets.**

Charge your devices while you sit. The Touareg offers a 115V power outlet and four 12V outlets, so it's easy to recharge and stay in charge. Power to the people.

**Cooling glovebox.**

Luxuriously cool. Storing items and keeping them cool is now easier than ever with a built-in vent inside the glovebox that can be opened or closed.

### AVAILABLE FEATURES

**Hands-free Easy Open liftgate.**

Hands full? With your keys in your pocket, just swipe your foot under the rear bumper and the hands-free Easy Open liftgate unlocks and opens.

**Electric rear seat release in cargo area.**

Sometimes you don't know how much cargo room is needed until the rear hatch is open. Now, expanding space is quicker than ever. Simply drop one or both rear seatbacks with an easy switch located in the rear cargo area. Easy breezy.



Comfortably agree to disagree.



With peace-keeping features like Climatronic® dual-zone automatic climate control, the Touareg aims to please those who ride in it. Consider the overall enjoyment you might get from available premium amenities like Vienna leather seating surfaces, or the extravagant view passengers can enjoy through the panoramic sunroof. Your comfort zone is easy to find with available 14-way adjustable front seats. So, even though you might traverse some rough terrain, in the Touareg you're bound to find common ground too.



#### STANDARD FEATURES

**Climatronic® dual-zone automatic climate control.** Some like it hot. Some like it cold. With dual-zone automatic climate control, you and your passenger can sit in your own comfort zone.

**Heated front seats.** Who's turning up the heat? Three settings help keep you and your passenger comfy and cozy when the cold wind blows.

#### AVAILABLE FEATURES

**Power tilting/sliding panoramic sunroof.** Enjoy a personal skylight with a large 12.7-sq.-ft. expansive sunroof that can let the sun in, while offering an exquisite view of nature's canvas.

**Front seats with active ventilation.** Whether on a cross-country drive or battling bumper-to-bumper traffic, you can keep your cool in the front seats. All thanks to an available seat base and backrest that can be ventilated from inside the seat at three levels (low, medium, high).

**14-way power-adjustable front seats with 3-position memory.** Get the comfiest seat in the Touareg by adjusting it to your liking. With just one finger, you can move your seat in not one, not two, but 14 possible ways.

**Heated steering wheel.** You're getting warmer. Turn it on and heat emanates from the steering wheel to help keep your hands warm while you drive on cold mornings and chilly evenings.





## Feature comforts.

Few things are as well crafted as the interior space of the Touareg. Every detail is designed to help put the driver in easy command. The touchscreen sound system allows for easy access to music while Bi-Xenon headlights illuminate the path ahead. And available Driver Assistance features like Lane Departure Warning (Lane Assist) and Forward Collision Warning and Autonomous Emergency Braking (Front Assist)\* help offer peace of mind, which is the best luxury of all.



V6 Executive shown in Deep Black Pearl

### STANDARD FEATURES

**Touchscreen sound system.** Play it: HD Radio™, CDs, MP3 and WMA songs on CD, and your compatible smartphone tunes collection. You can access it through the touchscreen on the dash.

**Bluetooth® technology with audio streaming for compatible devices.** Connect your smartphone or other compatible device for talking and streaming. This way you can handle business without missing a beat.

**Bi-Xenon headlights with LED Daytime Running Lights (DRL).** Brighter than halogen, Bi-Xenon bulbs last longer and help save energy. Plus, with LED DRL, it's a full-on light show.

### AVAILABLE FEATURES

**Dynaudio® premium sound system.** Surround yourself in full, rich sound from the 620-watt, 10-speaker system that makes every seat the best seat in the house.

**Touchscreen navigation with 3D landmarks.** An 8-inch touchscreen shows where you are and what's going on with traffic, weather, and location information.

**Keyless access with push-button start.** The key fob does the job. Leave it in your pocket. You can automatically unlock the door of your Touareg as you grip the door handle. Then once you're inside, with the press of the brake and the push of the start button, your engine starts and you are ready to go.

### AVAILABLE DRIVER ASSISTANCE FEATURES

**Adaptive Cruise Control (ACC).** Keep things under control with ACC, which is designed to help keep your car at a preset distance from the vehicle in front of you.\*

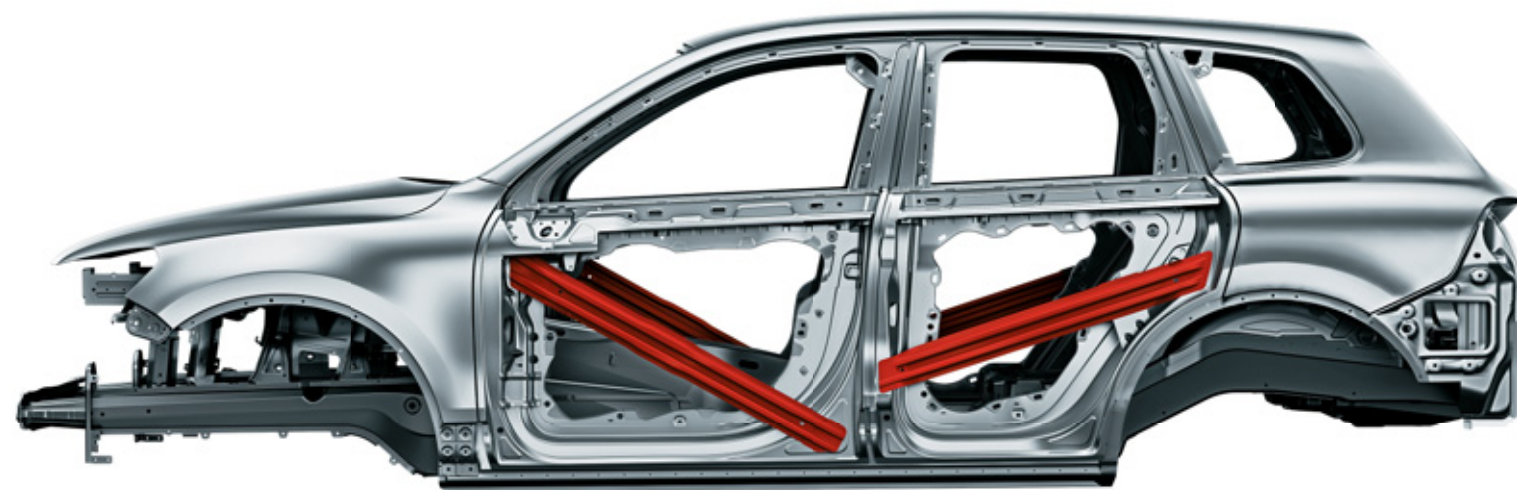
**Lane Departure Warning (Lane Assist).** This system helps warn you in certain conditions, if it detects that you're driving outside of your lane without use of a turn signal. If you happen to move outside of your lane, the steering wheel will vibrate to help alert you.\*

**Forward Collision Warning and Autonomous Emergency Braking (Front Assist).** Sensors in the front of your Touareg help alert you if you are approaching another vehicle too quickly. If you fail to brake enough, the system can boost the braking pressure. And if you don't brake at all, Front Assist automatically steps in and applies the brakes to help reduce the severity of a potential impact.\*



Always pay careful attention to the road, and do not drive while distracted. \*Driver Assistance features are not a substitute for attentive driving. See Owner's Manual for further details and important limitations.





## Confidence. Backed by forward thinking.

Before you can be confident, you need to be prepared. That's why the Touareg is equipped with active and passive safety features, seven active stability-enhancing systems, our Intelligent Crash Response System (ICRS)\* and Automatic Post-Collision Braking System, which all combine to help prepare you for the unpredictability of the road ahead. How's that for peace of mind?

### SAFETY FEATURES

**Adaptive airbags.** Our airbags have been engineered to adapt to crash severity, and special door sensors will deploy Side Curtain Protection® airbags in the event of a side impact.\*\*

**Automatic Post-Collision Braking System.** Not every collision brings a car to an immediate stop. That's why we engineered the Automatic Post-Collision Braking System. By automatically slowing down your car after a collision, you have a better opportunity to take control and help reduce the chance of any additional impacts.

**Intelligent Crash Response System (ICRS).** In the event of a collision that activates the vehicle's airbags,\*\* the Intelligent Crash Response System can automatically disable the fuel pump, unlock all the doors, and turn on the hazard lights.

**Seven stability-enhancing systems.** From Electronic Brake-pressure Distribution (EBD), which helps maintain appropriate stopping power during a hard-braking situation, to Electronic Stability Control (ESC), which adjusts engine throttle and applies corrective forces to the wheels that need them most, there are seven systems in total to help you stay in control.

**ESC with trailer stabilization.** When towing a trailer, Electronic Stability Control can detect instability that towing may cause. It can then adjust engine throttle and apply corrective forces at each wheel to help maintain control.

**Safety cage.** The safety cage for the Touareg has been designed to help protect you during front, rear, or side impacts. In addition, advanced thermoformed steel B-pillars offer strong reinforcements on top.

\*The Intelligent Crash Response System (ICRS) will only activate in a collision where the airbags deploy or safety belt pretensioners activate. Not all collisions cause airbags to deploy or safety belt pretensioners to activate. \*\*Airbags are supplemental restraints only and will not deploy under all crash circumstances. Always use safety belts and seat children only in the rear, using restraint systems appropriate for their size and age.

# Touareg Specs

EXTERIOR	SPORT	LUX	EXEC
Bi-Xenon high-intensity headlights with LED Daytime Running Lights (DRL) and Adaptive Front-lighting System (AFS)	●	●	●
Halogen reflector lens foglights with low-speed corner-illuminating feature	●	●	●
Power-operated, heated side mirrors with integrated turn signals	●	–	–
Power-operated, heated, power-folding side mirrors with memory and integrated turn signals	–	●	●
Auto-dimming driver's side exterior mirror	–	●	●
Power tilting/sliding panoramic sunroof	–	●	●
Remote opening and closing power liftgate	●	●	●
Hands-free Easy Open liftgate	○	●	●
Trailer hitch	○	●	●
LED taillights	●	●	●
Rain-sensing windshield wipers with heated washer nozzles	●	●	●
18" alloy wheels	●	–	–
19" alloy wheels	–	●	–
20" alloy wheels	–	–	●
21" alloy wheels	–	<b>WP</b>	<b>WP</b>
PERFORMANCE	SPORT	LUX	EXEC
3.6L, 24-valve, DOHC, narrow-angle V6 with FSI® direct fuel injection; 280 hp,* 265 lb-ft of torque	●	●	●
4MOTION® all-wheel-drive system	●	●	●
Servotronic® steering system (power assisted)	●	●	●
Double wishbone front and rear independent suspension	●	●	●
8-speed automatic transmission	●	●	●
INTERIOR	SPORT	LUX	EXEC
Climatronic® dual-zone automatic climate control with pollen filter	●	●	●
Premium color multi-function trip computer with trip time, trip length, average trip speed, average trip fuel consumption, current fuel consumption, miles to empty, radio station display, and personalizing function	●	●	●
2 radio-frequency remote transmitter key fobs with lock, unlock, trunk release, panic button, and selectable access valet key feature	●	●	●
115V power outlet	●	●	●
Self-dimming interior rearview mirror with on/off switch	●	●	●
8-way power-adjustable front seats	●	–	–
14-way power-adjustable front seats including 4-way power lumbar support, adjustable side bolsters, and 3-position memory function for driver's seat and side mirrors	–	●	●
Rear side-window sunshades	–	–	●
Heated front seats	●	●	●
Heated rear seats	–	–	●
Front seats with active ventilation control	–	●	●
3-spoke, leather-wrapped, multi-function steering wheel	●	–	–
Heated 3-spoke, leather-wrapped, multi-function steering wheel	○	●	●
Power height-adjustable and telescoping steering wheel with memory	–	–	●
Center front armrest with integrated storage	●	●	●
4 cupholders: 2 front and 2 rear	●	●	●
Glovebox, lockable and illuminated, with adjustable cooling feature	●	●	●
Fully upholstered luggage compartment	●	●	●
Stainless steel scuff plates on door sills	–	–	●
Stainless steel pedal covers	–	–	●
V-Tex leatherette seating surfaces	●	–	–
Vienna leather seating surfaces	–	●	●

TECHNOLOGY	SPORT	LUX	EXEC
RCD-550 sound system with 6.5" color touchscreen in center console, HD Radio™, SD memory card reader, AUX-in for portable audio players, and 8 speakers	●	–	–
RNS-850 navigation system with 8" color touchscreen in center console, 3D landmarks, CD/DVD player, advanced audio converting, SD card reader, 60GB hard drive, AUX-in, and HD Radio	○	●	●
Rearview Camera System	○	●	–
Overhead View Camera (Area View)	–	–	●
SiriusXM® Satellite Radio with 3-month trial subscription**	●	●	●
SiriusXM Traffic™ with 4-year subscription**	○	●	●
Media Device Interface (MDI) with iPod® cable	●	●	●
Bluetooth® technology with audio streaming for compatible devices	●	●	●
Dynaudio® premium sound system, with 10 speakers and amplifier	–	–	●
Keyless access with push-button start	○	●	●
Park Distance Control (Park Pilot)†	○	●	●
Lane Change Assistant (Side Assist)†	○	●	●
Lane Departure Warning (Lane Assist)†	○	●	●
Adaptive Cruise Control (ACC)†	○	●	●
Forward Collision Warning and Autonomous Emergency Braking (Front Assist)†	○	●	●
SAFETY	SPORT	LUX	EXEC
Driver and passenger front and side thorax airbag supplemental restraint system††	●	●	●
Side Curtain Protection® head airbags, front and rear††	●	●	●
3-point safety belts for all 5 seating positions; belt force limiters for all 5 seats and belt pretensioners for front seats	●	●	●
LATCH (Lower Anchors and Tethers for CHildren) child seat anchor points	●	●	●
Anti-lock Braking System (ABS), Electronic Brake-pressure Distribution (EBD), and Hydraulic Brake Assist (HBA)	●	●	●
Electronic Stability Control (ESC), Anti-Slip Regulation (ASR), Electronic Differential Lock (EDL), and Engine Braking Assist (EBA)	●	●	●
Intelligent Crash Response System (ICRS)‡	●	●	●
Automatic Post-Collision Braking System	●	●	●
Tire Pressure Monitoring System (TPMS)	●	●	●
QUALITY	SPORT	LUX	EXEC
12-year/120,000-mile (whichever occurs first) Limited Warranty Against Corrosion Perforation††	●	●	●
10-year/100,000-mile (whichever occurs first) Powertrain Limited Warranty††	●	●	●
3-year/36,000-mile (whichever occurs first) New Vehicle Limited Warranty††	●	●	●
3-year/36,000-mile (whichever occurs first) Roadside Assistance‡	●	●	●
DIMENSIONS	SPORT	LUX	EXEC
Wheelbase	113.9 inches (2,893 mm)		
Front track	65.2 inches (1,656 mm)		
Rear track	66.0 inches (1,676 mm)		
Length	188.8 inches (4,795 mm)		
Width	76.4 inches (1,940 mm)		
Height	68.2 inches (1,732 mm)		
Ground clearance	7.9 inches (201 mm)		

- Standard, no additional cost

- Optional, additional cost

- Not available

WP Available with 21-Inch Wheel Package

# Wheels and Colors

## STANDARD WHEELS



Sport and Sport with Technology 18" Arica



Lux 19" Salvador



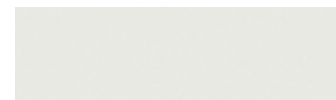
Executive 20" Montauk

## WHEEL PACKAGE



21" Mallory

## EXTERIOR COLORS



Pure White



Reflex Silver Metallic



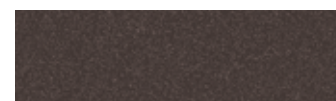
Sand Gold Metallic



Canyon Gray Metallic



Flint Gray Metallic



Black Oak Brown Metallic



Reef Blue Metallic

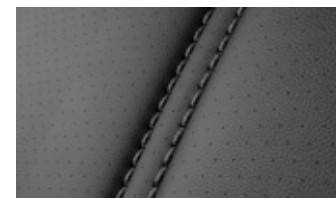


Moonlight Blue Pearl

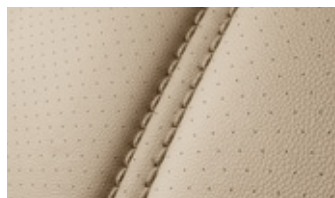


Deep Black Pearl

## INTERIOR V-TEX LEATHERETTE



Black Anthracite



Cornsilk Beige

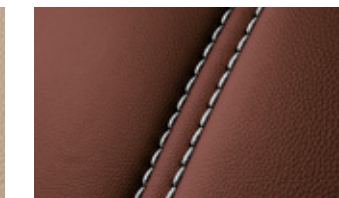
## INTERIOR VIENNA LEATHER



Black Anthracite



Cornsilk Beige



Terracotta Brown (late availability)

Not all combinations of exterior paint and interior seating surfaces are available.

\*Achieved with premium fuel. \*\*Vehicle includes 3-month no-charge SiriusXM Satellite Radio and 4-year SiriusXM Traffic trial subscription, which has separate terms and conditions. See [www.siriusxm.com/infotainment](http://www.siriusxm.com/infotainment) for details; 4-year trial subscription for SiriusXM Traffic applies to the original owner only. †Driver Assist features are not a substitute for attentive driving. See Owner's Manual for further details and important limitations. ††Airbags are supplemental restraints only and will not deploy under all crash circumstances. Always use safety belts and seat children only in the rear, using restraint systems appropriate for their size and age. ‡The Intelligent Crash Response System (ICRS) will only activate in a collision where the airbags deploy or safety belt pretensioners activate. Not all collisions cause airbags to deploy or safety belt pretensioners to activate. ‡‡See dealer or warranty booklet for details; some restrictions apply. ‡‡‡Roadside Assistance provided by Allstate.





# Accessories. For and by Volkswagen.

A diverse lineup calls for an even more diverse array of Volkswagen Accessories. That's why these available items are specially designed and created to fit your Volkswagen. So whether you're preparing for some outings or going for style points, your VW can be customized to your lifestyle.

## ACCESSORIES



Rear Hatch Spoiler



Base Carrier Bars with Cargo Box Attachment



License Plate Frames



Monster Mats<sup>®</sup> and MojoMats<sup>®</sup>



Aluminum Side Steps



Heavy Duty Trunk Liner with CarGo Blocks



Splash Guards



Tow and Ball Mount

Volkswagen Accessories installed by an authorized Volkswagen dealer are covered for the greater of: (1) the accessory limited warranty period (12 months or 12,000 miles, whichever occurs first) from the time of purchase; or (2) the remainder of the New Vehicle Limited Warranty period (3 years or 36,000 miles, whichever occurs first). See dealer for details.

©2015 Volkswagen Group of America, Inc. Printed in USA. Volkswagen of America, Inc., believes the information and specifications in this brochure to be correct at the time of printing. Specifications, standard features, options, fabrics, and colors are subject to change without notice. Some features may be unavailable when your vehicle is built. Some vehicles are pictured with options that may be available at extra cost or may not be available on some models. Ask your dealer about the availability of options and verify that the vehicle you ordered includes the equipment you ordered. Tires are supplied and warranted by their manufacturer. "Volkswagen," the Volkswagen logo, "Touareg," "DSG," and "TSI" are registered trademarks of Volkswagen AG. "Climatronic" is a registered trademark of Volkswagen Group of America, Inc. License plate frames by Camisasca Automotive Manufacturing are covered by a Camisasca limited warranty. Please visit [www.camincusa.com](http://www.camincusa.com) for additional information. "MojoMats<sup>®</sup>" and "Monster Mats<sup>®</sup>" are registered trademarks of Volkswagen Group of America, Inc. "FSI" is a registered trademark of Audi AG. "Bluetooth" is a registered trademark of Bluetooth SIG, Inc. Volkswagen navigation depends on the signals from the worldwide Global Positioning Satellite network. The vehicle's electrical system, and existing wireless and satellite technologies, must be available and operating properly for the system to function. The system is designed to provide you with suggested routes to location addresses, destinations, and other points of interest. Changes in street names, construction zones, traffic flow, points of interest, and other road system changes are beyond the control of Volkswagen of America, Inc. Complete detailed mapping of lanes, roads, streets, toll roads, highways, etc., is not possible, therefore you may encounter discrepancies between the mapping and your actual location. Please rely on your individual judgment in determining whether or not to follow a suggested navigation route. Periodically, the mapping is updated and a new DVD will be required in order to maintain the latest navigation information available to us. These will be available for purchase from time to time at additional cost. For further information regarding any Volkswagen model, please call 1-800-DRIVE-VW or just look us up at [vw.com](http://vw.com).