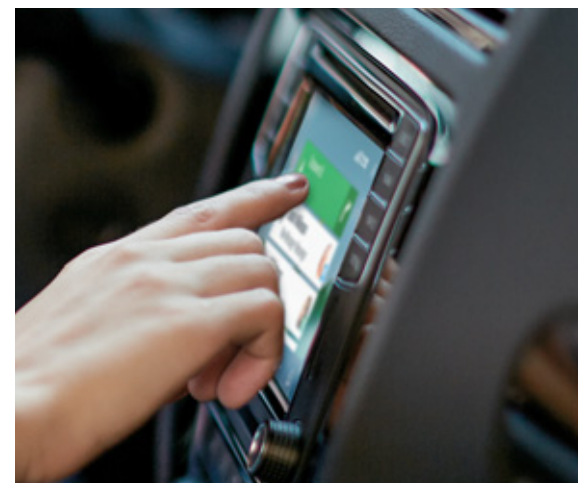


≡ 2016 Jetta







# Jetta



There's nothing better than knowing you're moving in the right direction. And that's just what the Jetta delivers. From its German-engineered turbocharged performance to its available leather-wrapped, multi-function steering wheel, every finely crafted inch of the Jetta is a step up. Designed with stylish details and equipped with features like available Volkswagen Car-Net® App-Connect,\* it's easy to see the Jetta is going places. Just like you.

\*Always pay attention to the road, and do not drive while distracted. App-Connect features require compatible device, operating system, and mobile app. Standard text and data usage rates apply. See mobile app provider for terms and privacy.





## Ambition has a style all its own.

Sporty and smart, the Jetta was drawn to draw attention. From its sleek exterior body to its beautifully designed available Bi-Xenon headlights with LED Daytime Running Lights (DRL), the Jetta lets style shine. But along with flash also comes substance. The Jetta is solidly built thanks to forged steel door hinges that illustrate how the quiet thunk of a door can scream quality.



### STANDARD FEATURES

**Heated power side mirrors.** Even the side mirrors on a Jetta bring the heat. So if the visibility starts to fog up, these can help give you a clear view.

**Laser seam welding.** By using the process of laser seam welding instead of spot welding, the seams on a Volkswagen are stronger and more precise than spot welding. Which translates to a solidly built car.

### AVAILABLE FEATURES

**Bi-Xenon headlights with LED Daytime Running Lights (DRL).** These headlights create bright beams of light to help improve visibility, lasting longer and using less energy than halogen bulbs. The LED Daytime Running Lights add style to your VW.

**Side mirrors with integrated turn signals.** These side mirrors are more than just beautifully designed; they also do double-duty with visible turn signals.

**17" alloy wheels.** With 17" alloys, your wheel of style will always be in motion.

**Foglights.** Inclement weather has met its match. The foglights help cut through mist and fog to light your way and add another subtle, yet sporty note to the front end.







SEL Premium shown in Titan Black leatherette



## Step into a status upgrade.

When it comes to interior space, the Jetta has it dialed in. From the moment you grab the sporty, multi-function steering wheel, you'll understand just how much roomy fun you can have. At 15.5 cu. ft., the Jetta also boasts a plentiful amount of cargo space so you can load up your friends and their belongings while you use the multi-function trip computer to get you to your next adventure.

### STANDARD FEATURES

**Cruise Control.** Keeps your speed constant on the road, so you can concentrate on the journey.

**Multi-function trip computer.** Be in the know with the multi-function trip computer. Conveniently positioned directly in front of you on the dashboard, it's a quick way to view important trip information.

**Multi-function steering wheel.** Style doesn't stop at where you steer. This is why the Jetta comes with a race-inspired steering wheel, crafted and contoured with fine leather so you can experience the joy of driving even more than you already do.

### AVAILABLE FEATURES

**6-way power-adjustable seat.** Get the comfiest seat in the car by adjusting it to your liking. With just one finger, you can move your seat in not one, not two, but six possible ways.

**Power tilting/sliding sunroof.** It tilts to help give you maximum exposure. You're one touch away from letting the sun shine on your drive.

**V-Tex leatherette seating surfaces.** They don't just look great. These perforated premium seating surfaces are also comfortable and easy to keep clean.

**Heated front seats.** Who's turning up the heat? Most likely you and your front seat passenger. You each get three settings to help keep you both comfy and cozy when the cold wind blows.

**Climatronic® dual-zone automatic climate control.** Some like it hot. Some like it cold. Thankfully, with dual-zone automatic climate control, you and your passenger can sit in your own comfort zone.

**Rear seat pass-through.** We thought things through. Literally. The 60/40-split folding rear seats with pass-through let you haul that pair of skis with minimal disruption of passengers in the back.





SE shown in Black with 17" Goal accessory wheels

## Features that move you forward.

The Jetta offers available advanced Driver Assistance features that help you go on any journey with more confidence in an unpredictable world. These forward-thinking features, like Blind Spot Monitor\* and Forward Collision Warning and Autonomous Emergency Braking systems (Front Assist)\*, help make you aware and potentially avert troublesome situations while driving. Handy features like Adaptive Cruise Control (ACC) help make you aware of what's ahead, while the Rear Traffic Alert helps alert you to what is behind you. Progress drives on.

### AVAILABLE DRIVER ASSISTANCE FEATURES

**Blind Spot Monitor.** Proximity sensors can help detect if another vehicle is coming up from behind or alongside you. So when you're trekking forward, your VW can alert you if a car is in your blind spot.\*

**Adaptive Cruise Control (ACC).** Keep things under control with ACC, which is designed to help keep your car at a preset distance from the vehicle in front of you.\*

**Forward Collision Warning and Autonomous Emergency Braking (Front Assist).** Sensors in the front of your Jetta help alert you if you are approaching another vehicle too quickly. If you fail to brake enough, the system can boost the braking pressure. And if you don't brake at all, Front Assist automatically steps in and applies the brakes to help reduce the severity of a potential impact.\*

**Rear Traffic Alert.** When in reverse and backing out of a parking space, Rear Traffic Alert can warn you of approaching vehicles. The system can assess if a collision might occur and can help intervene and respond by applying the brakes if you don't respond quickly enough to help avoid an accident.\*



Depiction of Blind Spot Monitor



Depiction of Adaptive Cruise Control (ACC)



Depiction of Forward Collision Warning and Autonomous Emergency Braking (Front Assist)

\*Driver Assistance features are not a substitute for attentive driving. See Owner's Manual for further details and important limitations.



# Dashboard meets smartphone.



Connect with your Volkswagen like never before. Your compatible smartphone makes a genius connection. The available Volkswagen Car-Net<sup>®</sup> connected car suite brings you many ways to connect to your Jetta. Take, for instance, VW Car-Net App-Connect, which can display select apps from your compatible smartphone onto your touchscreen.\* Once you plug your smartphone into the USB port, App-Connect lets you use your apps on the dash, using either Apple CarPlay<sup>™</sup>, Android Auto<sup>™</sup>, or MirrorLink<sup>®</sup>. Staying in touch has never been this easy.

## STANDARD FEATURES

**Composition Color touchscreen sound system.** Play it your way: CDs, USB audio, and your compatible smartphone tunes collection. You can access them through the touchscreen.

**Bluetooth<sup>®</sup> technology with audio streaming for compatible devices.** Connect your smartphone or other compatible device for talking and streaming. This way you can handle business without missing a beat.

**USB port.** Who better to play the perfect soundtrack to your road trip than you? The USB interface provides a direct route from your music to your ears.



## AVAILABLE FEATURES

**Volkswagen Car-Net Guide & Inform.** With easy access to gas prices, weather, sports scores, and more through SiriusXM Travel Link<sup>™</sup> services with 3-month trial subscription, and a 4-year trial subscription to SiriusXM Traffic<sup>™</sup>, which offers real-time traffic information, you get your info front and center.\*\*

**Volkswagen Car-Net Security & Service.** Provides a seamless link from your compatible devices—your smartphone, computer, or tablet—to your Volkswagen. VW Car-Net Security & Service can call for help in an emergency, monitor speed and boundary alerts, check the status of your VW when you're away, and much more!

**Volkswagen Car-Net App-Connect.** VW Car-Net App-Connect lets you link your compatible smartphone with Apple CarPlay, Android Auto, or MirrorLink to use select apps on the touchscreen display of your Volkswagen.\* From streaming music and mobile maps, it can be accessed on the touchscreen.

**Discover Media touchscreen navigation system.** Technology has an advanced touch. The updated navigation system boasts a large, sleek touchscreen display that offers voice control, proximity sensors, and multiple compatible phone-pairing capabilities. It also offers a USB port and VW Car-Net App-Connect.\* Modern technology, more accessible.

**SiriusXM Satellite<sup>®</sup> Radio.** SiriusXM brings music, live sports, news and talk, and the hottest entertainment to your next road trip.\*\*

**Composition Media touchscreen sound system.** The Jetta is now in touch. Literally. With its advanced touchscreen sound system, you can control your media, settings, and the Volkswagen Car-Net App-Connect\* feature, which can sync up compatible smartphones and display content on the dash. Be in command with one fingertip.

**Fender<sup>®</sup> Premium Audio System.** Tonight, in concert: 400 watts powering nine speakers, including a subwoofer, all courtesy of the pros at Fender. It's the ideal way to take your favorite bands on the road with you.

**Keyless access with push-button start.** The key fob does the job. Leave it in your pocket. You can automatically unlock the door of your Jetta as you grip the door handle. Then, once you're inside, with the push of the start button, your engine starts and you're ready to go.

**Rearview Camera System.** Hindsight is now foresight. The rearview camera helps you see and avoid obstacles when backing up, and it can make parking easier.

**Rain-sensing wipers.** When it starts to rain, the windshield wipers can be set to automatically turn on. They can also be set to adjust their speed according to how much rain is falling. Now a little precipitation won't dampen your drive.



\*Always pay careful attention to the road, and do not drive while distracted. App-Connect features require compatible device, operating system, and mobile app. Standard text and data usage rates apply. See mobile app provider for terms and privacy. Apple CarPlay is a trademark of Apple Inc. Android Auto is a trademark of Google Inc. \*\*Vehicle includes 3-month no-charge SiriusXM Travel Link trial subscription, which has separate terms and conditions. See [www.siriusxm.com/infotainment](http://www.siriusxm.com/infotainment) for details; 4-year trial subscription for SiriusXM Traffic applies to original owner only. Verizon Telematics, Inc., is the service provider for VW Car-Net Security & Service. Available on select trims. Trial or paid subscription required. These services require vehicle cellular connectivity and availability of vehicle GPS signal; certain services may collect location information. See Terms of Service, Privacy Policy, and other details at [www.vw.com/carnet](http://www.vw.com/carnet). Always pay careful attention to the road, and do not drive while distracted.





## The whole part is the fun part.

With the Jetta, it's not just one thing that makes it great. It's everything. For starters, it comes with a standard turbocharged engine, which is anything but standard when it comes to delivering performance with a wow factor. And when you consider there are three other available engine options, let the high-performance fun begin.\*



SEL Premium shown in Reflex Silver Metallic with Lighting and Driver Assistance Packages



Illustration purpose only.

### 1.4L TSI® engine

New to Jetta, this turbocharged direct injection engine starts an all-turbo engine lineup. Which means it's powerful. And fuel efficient.\*\* Win win.

150

HORSEPOWER<sup>1</sup>

184

LB-FT OF TORQUE



### 1.8L TSI engine

This available lightweight, turbocharged, 170-hp engine gives you the extra oomph you need to make any drive more spirited.\*

170

HORSEPOWER<sup>1</sup>

184

LB-FT OF TORQUE

### STANDARD FEATURES

**Sporty gauge cluster.** The sport-inspired instrument gauge cluster puts the speedometer and tachometer in clear view for easy reference as you run through the gears.

**4-corner independent suspension.** Built for the autobahn,\* this German-engineered, 4-corner independent suspension helps you stay in control of the road. And its fine-tuned design helps make every ride a smooth one.

### AVAILABLE FEATURES

**6-speed automatic transmission with Tiptronic® and Sport mode.** The Sport mode is custom-made for those spirited drives.\* And those times you want to be more hands on, Tiptronic lets you change gears with a quick tap of the shifter.

\*Always obey local speed and traffic laws. \*\*28 city/39 highway/32 combined mpg (2016 Jetta 1.4L TSI, automatic transmission). EPA estimates. Your mileage will vary and depends on several factors, including your driving habits and vehicle condition. <sup>1</sup>Achieved with premium fuel.



On the go go go.



Now your love of driving and your practical side fit into one precisely engineered package. The Jetta puts impressive power at your command along with exciting driving dynamics and available sporty transmissions. There's enough here under the hood to turn any drive into a smile-filled outing. It's about as much fun as you can have while still being eco-conscious.



**170**  
HORSEPOWER\*

**187**  
LB-FT OF TORQUE

### 1.4L TSI turbo hybrid powertrain

Efficiency\*\* is a beautiful thing. Our Jetta Hybrid combines a turbocharged 1.4L engine with an electric motor to deliver impressive performance and economy.

### STANDARD FEATURES

**Discover Media touchscreen navigation system with hybrid system display.** Besides easy access to Volkswagen Car-Net App-Connect,<sup>†</sup> traffic and parking info, and a USB port, you get the hybrid system display info front and center.

**7-speed DSG<sup>®</sup> automatic transmission.** The advanced 7-speed automatic transmission in the Jetta Hybrid boasts a dual clutch design that delivers efficient\*\* shifts in step with the hybrid's impressive power output.

**Leather-wrapped multi-function steering wheel.** Grab the multi-function steering wheel and control your tunes and how you communicate. It feels nice in more ways than one, especially since it's leather-wrapped.

**Keyless access with push-button start.** The key fob does the job. Leave it in your pocket. You can automatically unlock the door of your Jetta as you grip the door handle. Then, once you're inside, with the push of the start button, your engine starts and you're ready to go.

\*Achieved with premium fuel. \*\*42 city/48 highway mpg (2015 Jetta Hybrid 7-speed DSG transmission). 2016 EPA estimates not available at the time of publication. See [www.fueleconomy.gov](http://www.fueleconomy.gov) for updated information. Your mileage will vary and depends on several factors, including your driving habits and vehicle condition. <sup>†</sup>Always pay careful attention to the road, and do not drive while distracted. App-Connect features require compatible device, operating system, and mobile app. Standard text and data usage rates apply. See mobile app provider for terms and privacy.





## A whole lot of safety features under one roof.

When equipped with the optional Forward Collision Warning and Autonomous Emergency Braking (Front Assist) system,\* the Jetta is a 2015 IIHS Top Safety Pick+.\*\* We also included a rigid safety cage with strategically placed crumple zones, and active and passive safety features that work in tandem to help offer peace of mind. And with intelligent safety features and advanced technologies like the Intelligent Crash Response System,† the Jetta is ready to help be on the lookout for you.

**2015 IIHS TOP SAFETY PICK+**

### SAFETY FEATURES

**Safety cage.** The safety cage for the Jetta has been designed to help protect you during front, rear, or side impacts. In addition, advanced thermoformed steel B-pillars offer strong reinforcements on top.

**Intelligent Crash Response System (ICRS).** In the event of a collision that activates the vehicle's airbags,† the Intelligent Crash Response System can automatically disable the fuel pump, unlock all the doors, and turn on the hazard lights!

**Adaptive airbags.** Our airbags have been engineered to adapt to crash severity, and special door sensors will deploy Side Curtain Protection® airbags in the event of a side impact.††

**Seven stability-enhancing systems.** From Electronic Brake-pressure Distribution (EBD), which helps maintain appropriate stopping power during a hard-braking situation, to Electronic Stability Control (ESC), which adjusts engine throttle and applies corrective forces to the wheels that need them most, there are seven systems total to help you stay in control.

**Tire Pressure Monitoring System (TPMS).** The right amount of tire pressure is needed to help maximize your riding comfort. Thanks to this feature, you'll be alerted when your tire pressure is low so you know when to add air.

**Automatic Post-Collision Braking System.** Not every collision brings a car to an immediate stop. That's why we engineered the Automatic Post-Collision Braking System. By automatically slowing down your car after a collision, you have a better opportunity to take control and help reduce the chance of any additional impacts.

\*Driver Assistance features are not a substitute for attentive driving. See Owner's Manual for further details and important limitations. \*\*2015 Top Safety Pick+ based on good ratings in the moderate overlap front, side, roof strength, head restraint tests; no less than an acceptable rating in the small overlap front tests; and no less than an advanced rating for front crash prevention. For details, visit [www.iihs.org](http://www.iihs.org). †The Intelligent Crash Response System (ICRS) will only activate in a collision where the airbags deploy or safety belt pretensioners activate. Not all collisions cause airbags to deploy or safety belt pretensioners to activate. ††Airbags are supplemental restraints only and will not deploy under all crash circumstances. Always use safety belts and seat children only in the rear, using restraint systems appropriate for their size and age. †This is a dramatization and does not depict what will happen in a collision. All bags will not inflate in real-world collisions and if multiple bags do deploy they will be in various stages of inflating/deflating and will never be inflated at the same time.





# Jetta Specs

## EXTERIOR

	JETTA	HYBRID
Bi-Xenon high-intensity headlights with LED Daytime Running Lights (DRL) and Adaptive Front-lighting System (AFS)	LP	●
LED taillights	-	●
Foglights	○	●
Heated power side mirrors	●	●
Power tilting/sliding sunroof with manual sunshade	○	●
15" steel wheels with wheel covers	●	-
16" alloy wheels	○	-
17" alloy wheels	○	●
Heated windshield washer nozzles	○	●

## INTERIOR

	JETTA	HYBRID
Manual air-conditioning	●	-
Climatronic® dual-zone automatic climate control	○	●
Cruise control	●	●
Interior ambient lighting	LP	●
Multi-function trip computer featuring trip time, trip length, average trip speed, average trip fuel consumption, current fuel consumption, miles to empty, speed warning, current speed, and temperature	●	-
Premium color multi-function trip computer display	-	●
2 remote key fobs with lock, unlock, trunk release, and panic button	●	●
2 12V power outlets: 1 in front, 1 in rear	●	●
6-way manually adjustable front seats	●	-
6-way power-adjustable driver's seat	○	●
Driver seat with adjustable lumbar support	○	●
Sport bolstered comfort seats	○	-
Heated front seats	○	●
60/40-split folding rear seats	●	-
60/40-split folding rear seats with center armrest and pass-through with integrated cupholders	○	●
3-spoke, multi-function sporty steering wheel	●	-
Leather-wrapped, 3-spoke, multi-function sporty steering wheel, shift knob, and hand brake lever	○	●
Cloth seating surfaces	●	-
V-Tex leatherette seating surfaces	○	●
Glovebox with cooling feature	○	●
Turn-signal control stalk with 1-tap lane change feature	●	●
Auto-dimming interior rearview mirror with on/off switch	-	●

## PERFORMANCE

	JETTA	HYBRID
1.4L TSI®, 16-valve, DOHC, in-line 4-cylinder turbocharged engine with direct injection and intercooler; 150 hp,* 184 lb-ft of torque	●	-
1.8L TSI, 16-valve, DOHC, in-line 4-cylinder turbocharged engine with direct injection and intercooler; 170 hp,* 184 lb-ft of torque	○	-
1.4L TSI, turbocharged hybrid powertrain; 170 hp,* 184 lb-ft of torque system power	-	●
Power-assisted front vented disc brakes with rear solid disc brakes	●	●
Multi-link rear suspension	●	●
5-speed manual transmission	●	-
6-speed automatic transmission with Tiptronic® and Sport mode	○	-
7-speed DSG automatic transmission with Tiptronic and Sport mode	-	●

- Standard, no additional cost
- Optional, additional cost
- Not Available

**LP** Available with Lighting Package

**DAP** Available with Driver Assistance Package

## TECHNOLOGY

	JETTA	HYBRID
Composition Color touchscreen sound system, MP3/WMA-compatible CD player, AM/FM radio, and SD memory card reader	●	-
Composition Media touchscreen sound system with proximity sensor, MP3/WMA/FLAC-compatible CD player, AM/FM/HD Radio™, SD memory card reader, and voice control	○	-
Discover Media touchscreen navigation system with proximity sensor, MP3/WMA/FLAC-compatible CD player, AM/FM/HD Radio, SD memory card reader, and voice control	○	●
AUX-in for portable audio players	●	●
USB port	●	●
Bluetooth® technology with audio streaming for compatible devices	●	●
SiriusXM® Satellite Radio with 3-month trial subscription**	○	●
Fender® Premium Audio System with 8 speakers plus subwoofer	○	-
Volkswagen Car-Net® App-Connect†	○	●
Volkswagen Car-Net Security & Service††	○	●
Volkswagen Car-Net Guide & Inform‡	○	●
Push-button start	○	-
Keyless access with push-button start	○	●
HomeLink® garage door opener, integrated into sun visor	○	●
Rearview Camera System	○	●
Forward Collision Warning and Autonomous Emergency Braking (Front Assist)††	DAP	-
Blind Spot Monitor††	DAP	●
Rear Traffic Alert††	DAP	●
Adaptive Cruise Control (ACC)††	DAP	-
Park Distance Control (Park Pilot)	-	●

## SAFETY

	JETTA	HYBRID
Crash-optimized front end	●	●
Driver and front passenger, front and side thorax airbag supplemental restraint system <sup>5</sup>	●	●
Side Curtain Protection® airbags, front and rear <sup>5</sup>	●	●
Front seat safety belt pretensioners with load limiters	●	●
LATCH (Lower Anchors and Tethers for Children) child seat anchor points	●	●
Electronic Stability Control (ESC), Anti-Slip Regulation (ASR), Electronic Differential Lock (EDL), and Engine Brake Assist (EBA)	●	●
Anti-lock Braking System (ABS), Electronic Brake-pressure Distribution (EBD), and Hydraulic Brake Assist (HBA)	●	●
Intelligent Crash Response System (ICRS) <sup>5§</sup>	●	●
Tire Pressure Monitoring System (TPMS)	●	●

## QUALITY

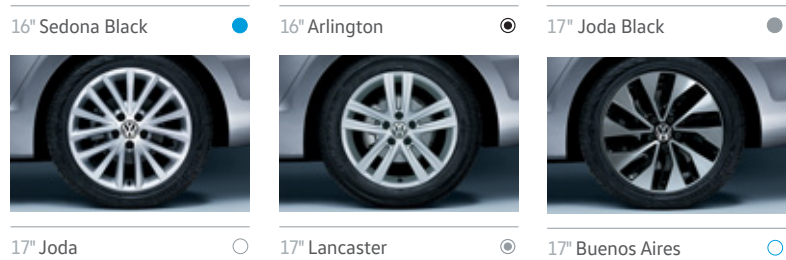
	JETTA	HYBRID
12-year/120,000-mile (whichever occurs first) Limited Warranty Against Corrosion Perforation <sup>9</sup>	●	●
5-year/60,000-mile (whichever occurs first) Powertrain Limited Warranty <sup>9</sup>	●	●
3-year/36,000-mile (whichever occurs first) New Vehicle Limited Warranty <sup>9</sup>	●	●
3-year/36,000-mile (whichever occurs first) Roadside Assistance <sup>9§</sup>	●	●

## DIMENSIONS

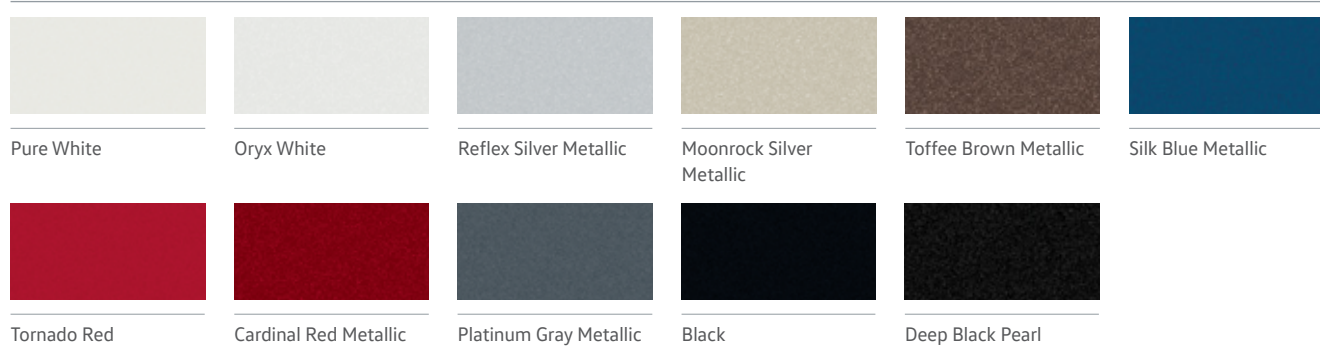
Wheelbase	104.4 inches (2,651 mm)
Front track	60.4 inches (1,535 mm)
Rear track	60.3 inches (1,532 mm)
Length	182.2 inches (4,628 mm)
Width	70.0 inches (1,778 mm)
Height	57.2 inches (1,453 mm)
Ground clearance	5.5 inches (139 mm)
Trunk capacity	15.5 cu. ft.

# Wheels and Colors

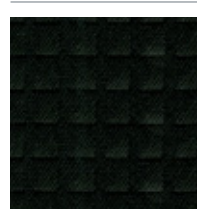
## STANDARD WHEELS



## EXTERIOR COLORS

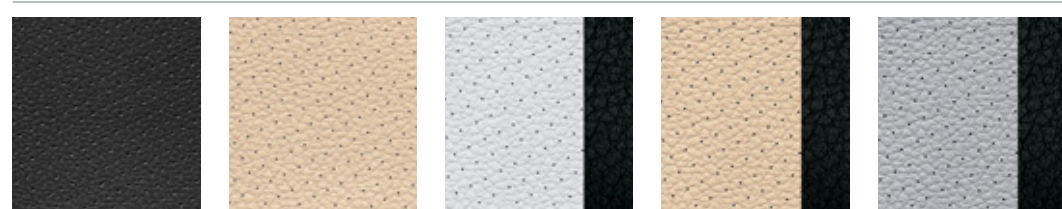


## INTERIOR CLOTH



Titan Black

## INTERIOR V-TEX LEATHERETTE



Titan Black

Cornsilk Beige

Ceramique and Titan Black Two-Tone

Cornsilk Beige and Titan Black Two-Tone

Art Gray and Titan Black Two-Tone

- SE
- SE w/Connectivity
- Sport
- SEL
- SEL Premium
- Hybrid

# Packages

## LIGHTING PACKAGE

Bi-Xenon high-intensity headlights with LED Daytime Running Lights (DRL) and Adaptive Front-lighting System (AFS), interior ambient lighting.

Available on Sport, SEL, SEL Premium

## DRIVER ASSISTANCE PACKAGE

Forward Collision Warning and Autonomous Emergency Braking (Front Assist), Blind Spot Monitor, Rear Traffic Alert, Adaptive Cruise Control (ACC).

Available on SEL, SEL Premium

Not all combinations of exterior paint and interior seating surfaces are available.

\*Achieved with premium fuel. \*\*SiriusXM Satellite Radio, SiriusXM Traffic, and SiriusXM Travel Link subscriptions are sold separately or as a package after trial period and are continuous until you call SiriusXM at 1-866-635-2349 to cancel. See Customer Agreement for complete terms and more information at [www.siriusxm.com](http://www.siriusxm.com). ©2015 Sirius XM Radio Inc. Sirius, XM, and all related marks and logos are trademarks of Sirius XM Radio Inc. †Always pay careful attention to the road, and do not drive while distracted. App-Connect features require compatible device, operating system, and mobile app. Standard text and data usage rates apply. See mobile app provider for terms and privacy. Apple CarPlay is a trademark of Apple Inc. Android Auto is a trademark of Google Inc. ††Verizon Telematics, Inc., is the service provider for VW Car-Net Security & Service. Available on select trims. Trial or paid subscription required. These services require vehicle cellular connectivity and availability of vehicle GPS signal; certain services may collect location information. See Terms of Service, Privacy Policy, and other details at [www.vw.com/carnet](http://www.vw.com/carnet). Always pay careful attention to the road, and do not drive while distracted. †††Vehicle includes 3-month no-charge SiriusXM Travel Link trial subscription, which has separate terms and conditions. See [www.siriusxm.com/infotainment](http://www.siriusxm.com/infotainment) for details; 4-year trial subscription for SiriusXM Traffic applies to original owner only. ††††Driver Assistance features are not a substitute for attentive driving. See Owner's Manual for further details and important limitations. †††††Airbags are supplemental restraints only and will not deploy under all crash circumstances. Always use safety belts and seat children only in the rear, using restraint systems appropriate for their size and age. ††††††The Intelligent Crash Response System (ICRS) will only activate in a collision where the airbags deploy or safety belt pretensioners activate. Not all collisions cause airbags to deploy or safety belt pretensioners to activate. †See dealer or warranty booklet for details; some restrictions apply. †††Roadside Assistance provided by Allstate.





# Accessories. For and by Volkswagen.

A diverse lineup calls for an even more diverse array of Volkswagen Accessories. That's why these available items are specially designed and created to fit your Volkswagen. So whether you're preparing for some outings or going for style points, your VW can be customized to your lifestyle.

## ACCESSORIES



18" Motorsport Wheels



Monster Mats® and MojoMats®



License Plate Frames



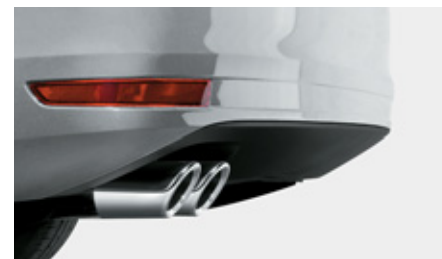
Rear Lip Spoiler



MuddyBuddy™ Cargo Liner and CARGOTECH® Blocks



Base Carrier Bars and Fork Mount Bike Holder Attachments



Chrome Exhaust Tips



Shopping Bag Hook

Volkswagen Accessories installed by an authorized Volkswagen dealer are covered for the greater of: (1) the accessory limited warranty period (12 months or 12,000 miles, whichever occurs first) from the time of purchase; or (2) the remainder of the New Vehicle Limited Warranty period (3 years or 36,000 miles, whichever occurs first). See dealer for details.

©2015 Volkswagen of America, Inc. Printed in the U.S.A. Volkswagen of America, Inc., believes the specifications in this brochure to be correct at the time of printing. Specifications, standard equipment, options, fabrics, and colors are subject to change without notice. Some features may be unavailable when your vehicle is built. Some vehicles are pictured with options that may be available at extra cost or may not be available on some models. Ask your dealer about availability of options and verify that the vehicle you ordered includes the equipment you ordered. Tires are supplied and warranted by their manufacturer. "Volkswagen," the Volkswagen logo, "Car-Net," "Jetta," "TSI," and "DSG" are registered trademarks of Volkswagen AG. "Tiptronic" is a registered trademark of Dr. Ing. h.c. F. Porsche AG. "FSI" is a registered trademark of Audi AG. FENDER is a trademark of FMIC. All rights reserved. "Bluetooth" is a registered trademark of Bluetooth SIG, Inc. License plate frames by Camisasca Automotive Manufacturing are covered by a Camisasca limited warranty. Please visit [www.camincusa.com](http://www.camincusa.com) for additional information. MuddyBuddy™ and CARGOTECH® are registered trademarks of MacNeil Automotive Products Limited. MuddyBuddy Trunk Liners by WeatherTech are covered by a WeatherTech® limited warranty for three years from the date of purchase. Please visit [www.weathertech.com](http://www.weathertech.com) for additional information. "MojoMats®" and "Monster Mats®" are registered trademarks of Volkswagen Group of America, Inc. "iPhone" is a registered trademark of Apple, Inc. All rights reserved. iPhone not included. Volkswagen navigation depends on the signals from the worldwide Global Positioning Satellite network. The vehicle's electrical system, and existing wireless and satellite technologies, must be available and operating properly for the system to function. The system is designed to provide you with suggested routes to location addresses, destinations, and other points of interest. Changes in street names, construction zones, traffic flow, points of interest, and other road system changes are beyond the control of Volkswagen of America, Inc. Complete detailed mapping of lanes, roads, streets, toll roads, highways, etc., is not possible, therefore you may encounter discrepancies between the mapping and your actual location. Please rely on your individual judgment in determining whether or not to follow a suggested navigation route. Periodically, the mapping is updated and a new DVD will be required in order to maintain the latest navigation information available to us. These will be available for purchase from time to time at additional cost. For further information regarding any Volkswagen model, please call 1-800-DRIVE-VW or just look us up at [vw.com](http://vw.com).