



Genuine accessories for the CLS-Class

Mercedes-Benz







CONTENTS

EXTERIOR

Light-alloy wheels | Wheel accessories | Styling accessories _____ **04**

INTERIOR/TELEMATICS

Interior appointments | Telematics | Child safety _____ **12**

CARGO & CARE

Carrier systems | Trunk accessories _____ **18**

AMG

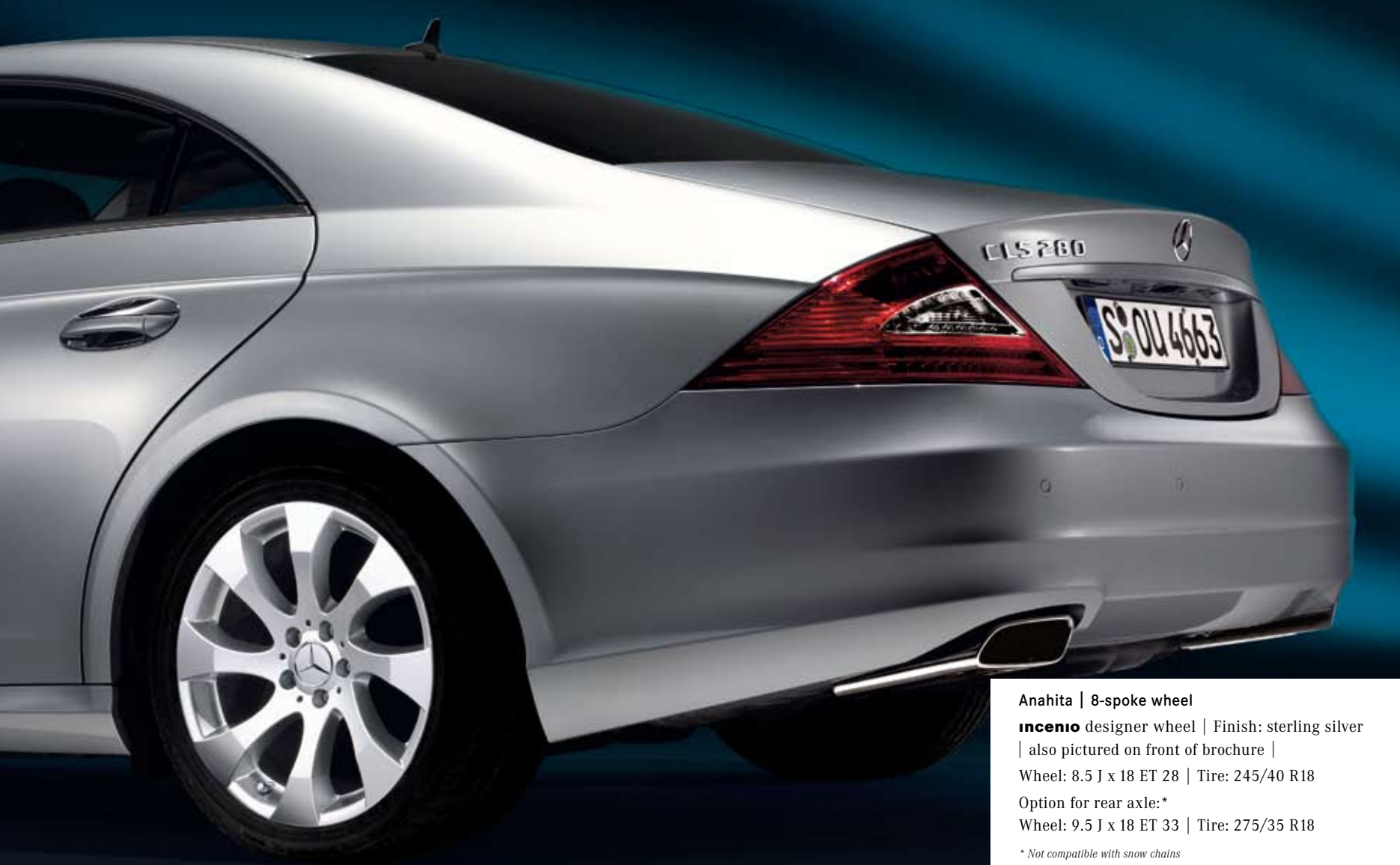
AMG light-alloy wheels | AMG bodystyling _____ **26**





*Light-alloy wheels
Wheel accessories
Styling accessories*

EXTERIOR



Anahita | 8-spoke wheel

incenio designer wheel | Finish: sterling silver
| also pictured on front of brochure |

Wheel: 8.5 J x 18 ET 28 | Tire: 245/40 R18

Option for rear axle:*

Wheel: 9.5 J x 18 ET 33 | Tire: 275/35 R18

** Not compatible with snow chains*

Captivating

Not all of a Mercedes-Benz's qualities are apparent at first glance. Technical perfection and durability, for example, are characteristics which only become obvious over the course of time. But few cars on the road today reveal as much on first glance as a CLS: effortlessly superior elegance and powerful dynamism have rarely been combined to more impressive effect.

The **incenio** designer wheels and other stylish products shown over the following pages offer the ideal way to add an individual touch to the CLS's stunning looks. For an attraction that will last well beyond the first glance.



Menket | 7-spoke wheel

incenio designer wheel | Finish: sterling silver

Wheel: 8.5 J x 18 ET 28 | Tire: 245/40 R18

Option for rear axle:*

Wheel: 9.5 J x 18 ET 33 | Tire: 275/35 R18

*Option in titanium silver also available
* Not compatible with snow chains*



Zubenesli | 5-spoke wheel*

| also pictured on previous pages |

incenio designer wheel | Finish: sterling silver

Wheel: 8.5 J x 19 ET 25 | Tire: 255/35 R19

Wheel: 9.5 J x 19 ET 28 | Tire: 285/30 R19

*Only in conjunction with summer tires
Only with Code 489 (AIRMATIC)
* Not compatible with snow chains*

On all light-alloy wheels, use wheel bolt A000 990 4907 and the corresponding rim lock B6 647 0144 (from spring 2008: B6 647 0155).

Light-alloy wheels are supplied without tires, wheel bolts or hub caps

incenio designer wheels

EXTERIOR



5-spoke wheel

Finish: titanium silver

Wheel: 8.5 J x 18 ET 28

Tire: 245/40 R18

Option for rear axle:

Wheel: 9.5 J x 18 ET 33*

Tire: 275/35 R18

Wheel: 8.5 J x 18 ET 18

Tire: 245/40 R18

** Not compatible with snow chains*



5-spoke wheel

Finish: titanium silver

Wheel: 8.5 J x 18 ET 28

Tire: 245/40 R18

Option for rear axle:

Wheel: 8.5 J x 18 ET 18

Tire: 245/40 R18

Wheel: 9.5 J x 18 ET 33*

Tire: 275/35 R18

** Not compatible with snow chains*



Multi-spoke wheel

Finish: titanium silver

Wheel: 8.5 J x 18 ET 28

Tire: 245/40 R18

Option for rear axle:*

Wheel: 9.5 J x 18 ET 33

Tire: 275/35 R18

** Not compatible with snow chains*

On all light-alloy wheels, use wheel bolt A000 990 4907 and the corresponding rim lock B6 647 0144 (from spring 2008: B6 647 0155).

Light-alloy wheels are supplied without tires, wheel bolts or hub caps





Rim locks

Set consisting of coded key and one lock per wheel



Valve caps



Wheel bolts
| not pictured |

Rudmatic-Disc snow chain system

User-friendly design, can be fitted and removed quickly. A tough plastic ring protects your light-alloy wheel from scratches



5-twin-spoke wheel

Finish: titanium silver/high-sheen

Wheel: 8.5 J x 18 ET 28

Tire: 245/40 R18

Option for rear axle:*

Wheel: 9.5 J x 18 ET 33

Tire: 275/35 R18

* Not compatible with snow chains

Mud flaps

Protect the underbody and the sides of the car from loose chippings and dirt. For front and rear axles

EXTERIOR

Mercedes-Benz light-alloy wheels

Mud flaps

Rim locks

Snow chains

Valve caps

Wheel bolts

**High-sheen chromed
exterior mirror housings**

High-sheen chromed exterior mirror housings – an elegant highlight from the sparkling range of coordinating exterior refinements
| expected to be available
from 3rd quarter of 2008 |



**High-sheen chromed
door handle recesses**

Round off your CLS's chrome finish and protect the paintwork from scratches.
Available as a 4-piece set





Exterior mirror housings
Door handle recesses
Hub caps



Hub caps

Protect the hub from dirt.

Available in the following versions:

- 1 | Classic Roadster design in blue
- 2 | Classic Roadster design in black
- 3 | Sterling silver with chrome star
- 4 | Titanium silver with chrome star

EXTERIOR





Interior appointments

INTERIOR/ TELEMATICS

A luxurious interior

Inside your CLS your gaze is instantly drawn to the distinctive wood trim. What could be more natural than to opt to refine the most important control element – the steering wheel – with this genuine material too?

These pages not only feature items which are designed to make your CLS more attractive and individual but also products that will make it even more practical, comfortable and safe. Welcome home.



Wood/leather steering wheel

The exclusive wood/leather steering wheel, with its 3-spoke design, coordinates perfectly with the interior of your CLS. It not only underlines your car's dynamic elegance but also offers ergonomic comfort with its contoured thumbrests | leather: black |

Available wood:

- 1 | burr walnut
- 2 | bird's-eye maple
- 3 | high-sheen laurel

The wheel pictured is Chestnut, not available in Canada.



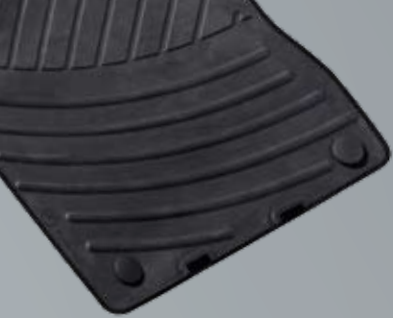
Coat hanger

Robust coat hanger made from chromed metal and plastic. Easy to fit to the front head restraints. The ideal way to transport items of clothing without creasing them

Back cushion

Ergonomic, individually adjustable cushion, designed to support the back on long journeys. Available in anthracite



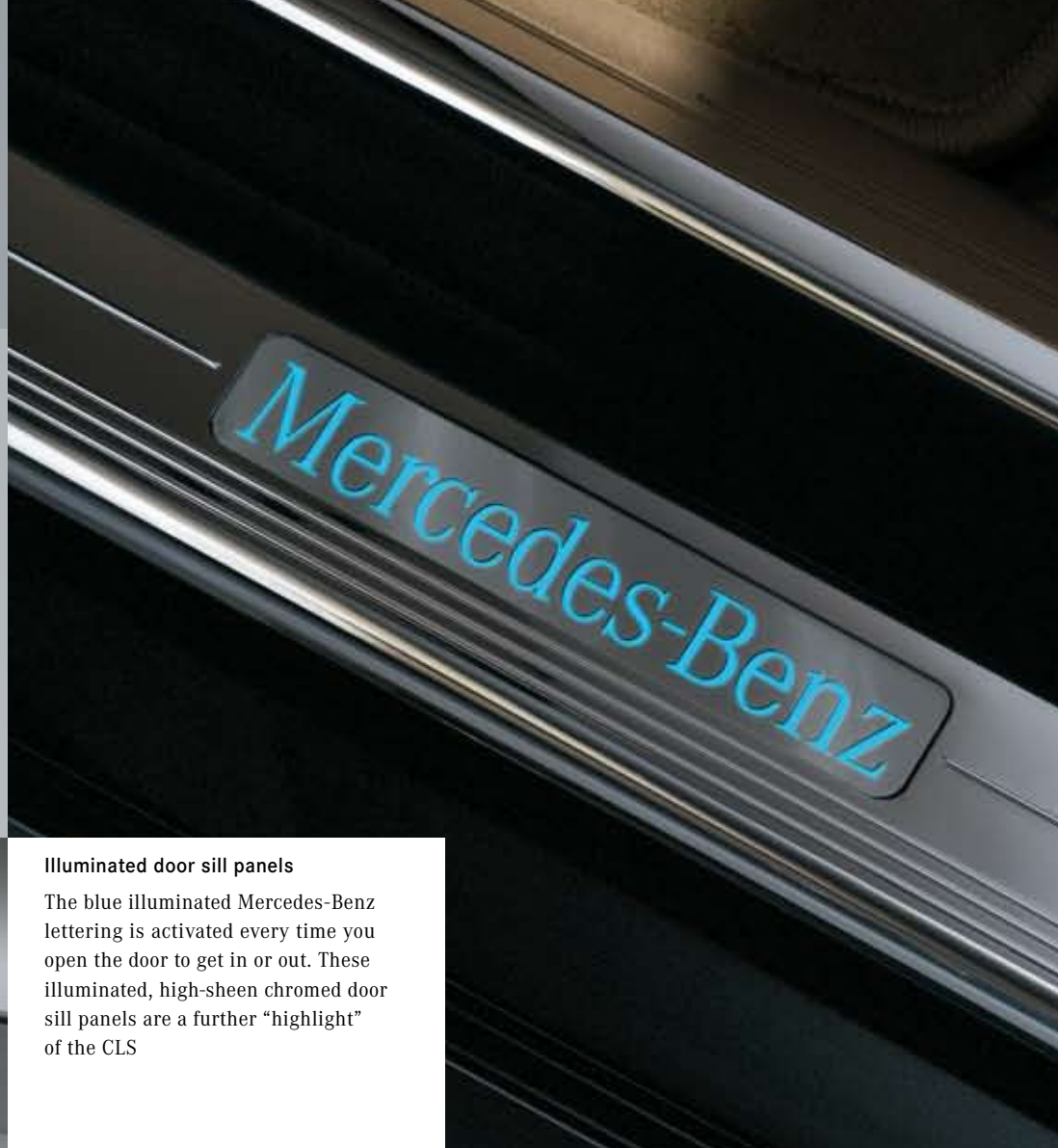


All-season mats

Durable, hardwearing materials. Available in black. Can be clip-fastened to the floor of the vehicle to prevent slipping

Spectacles box

Universal – adjusts to different sizes of spectacles/sunglasses



Illuminated door sill panels

The blue illuminated Mercedes-Benz lettering is activated every time you open the door to get in or out. These illuminated, high-sheen chromed door sill panels are a further “highlight” of the CLS

- Back cushion*
- Coat hanger*
- Door sill panels*
- Floor mats*
- Spectacles box*
- Wood/leather steering wheel*

INTERIOR/ TELEMATICS

Luxury head restraint cover

Anthracite. For the head restraints



Cleanbag

The ideal way to keep the interior clean when you're on the move: the "Cleanbag" is simply attached to the net in the front passenger footwell or to the ruffled pockets on the back of the front seats



Vario bag

Plenty of extra stowage space for the really important things in life.

Available in three designs:

- 1 | "DaimlerSquare" fabric | pictured |
- 2 | "Angel & Driver" fabric
- 3 | Alcantara, java



Mercedes-Benz iPod® Interface Kit*

It's easy to control your iPod via the multifunction steering wheel: scroll through the menus [A], adjust the playback and volume [B] and display the artist/title of your choice in the instrument cluster [C].

As with the Mercedes-Benz Media Interface, the connection for your iPod is in the glove compartment. Your iPod's battery is charged while it is connected. No factory-fitted optional extra required

iPod/iPhone holder*

Black plastic holder for the glove compartment. Holds your iPod in place. Soft, flock surface protects the player from scratches and prevents it sliding around

**The Mercedes-Benz Interface Kit allows you to listen to the music on your iPhone. It does not support the phone function*

The iPod Interface Kit and the iPod holder are compatible with the following models: iPod (from 4th generation) | iPod video | iPod photo | iPod U2 | iPod mini | iPod nano 1st and 2nd generation | iPod classic | iPod touch | iPhone

iPod/iPhone holder cannot be used in conjunction with Media Interface consumer cables

*Cleanbag
Luxury head restraint cover
Vario bag
iPod Interface Kit
iPod/iPhone holder*

**INTERIOR/
TELEMATICS**





Carrier systems
Trunk accessories

CARGO & CARE

A key supporting role

It's perfectly possible that, for you, the experience of driving a CLS leaves nothing to be desired: your CLS experience is all about the driving.

If, however, you're someone who wants to continue the journey on skis, snowboard or bike once you've reached your destination, then we have a range of highly effective products to assist you: from crash-tested roof carriers to practical trunk accessories.

Just in case driving your CLS isn't the only item on your to-do list.

New Alustyle basic carrier bars

The New Alustyle system opens up a wealth of flexible options when it comes to transporting sports equipment and luggage. Simply combine the New Alustyle basic carrier bars with a variety of different roof-mounted carriers which you can see here and on the following pages. The basic carrier bars are precisely tailored to the body of your CLS, ensuring the highest degree of safety and optimum aerodynamics

Transport and stowage bag

Robust bag, made from a high-quality nylon fabric. Protects the basic carrier bars and makes it easier to transport them



Luggage set

| for Mercedes-Benz roof box M |
Four bags made from hardwearing, water-repellent polyester. Tailored to the dimensions of the roof box M

Mercedes-Benz roof boxes

Elegant, aerodynamic design, made for your Mercedes-Benz. High-quality, extremely durable material. Available in two colours: titanium metallic **A** and matt silver **B**



1 | Mercedes-Benz roof box L

family box | Capacity: approx. 450 litres. Available with opening on right or left. Optional accessories: luggage set and ski rack insert

2 | Mercedes-Benz roof box M

sports box | Capacity: approx. 330 litres. Available with opening on right or left. Optional accessories: luggage set and ski rack insert

3 | Mercedes-Benz roof box S

weekend box | Capacity: approx. 400 litres. Available with opening on right or left



Luggage set

| for Mercedes-Benz roof box L |

Four bags, designed to make perfect use of the space available in the roof box L. Made from hardwearing, water-repellent polyester. Plus two matching ski bags, each designed to hold max. two pairs of skis. Ski bag also available separately



Ski rack insert | for Mercedes-Benz roof box L |

A secure hold for up to five pairs of skis, subject to ski geometry. For Mercedes-Benz roof box L | pictured below |

Ski rack insert | for Mercedes-Benz roof box M |

A secure hold for up to three pairs of skis, subject to ski geometry. For Mercedes-Benz roof box M | not pictured |



Basic carrier bars
Luggage set
Roof boxes
Ski rack insert
Transport bag

CARGO & CARE



Ski bag for interior

For up to two pairs of skis. With carrying strap and tension straps for attaching to load-securing rings in the trunk



New Alustyle ski and snowboard rack

- “Comfort” | for up to 6 pairs of skis or 4 snowboards.
Lockable. Practical pull-out function makes loading and unloading easier | pictured right |
- “Standard” | for up to 4 pairs of skis or 2 snowboards.
Lockable | not pictured |





New Alustyle bicycle rack

Up to three bicycle racks can be fitted per pair of basic carrier bars. Each bicycle rack can hold one bicycle with a max. frame diameter of 98 mm (circular frame tubes) or 110 x 70 mm (oval frame tubes). The support frame folds down when not in use, reducing drag when travelling without cycles. Cycles can either be attached to the rack once it has been fitted to the roof or before it is fitted | also pictured right |

The convenient design of the Mercedes-Benz bicycle rack allows the cycle to be attached to ground level. The cycle is simply mounted on the rail alongside the vehicle and both are then fitted to the basic carrier bars



Coil lock

Designed to help prevent theft. Available as an option for the bicycle rack

Coolbox

| black/grey | Hard case with fabric cover, featuring pockets for extra items. Cold/hot switch. Capacity: 24 litres. 12V connection. Adjustable carrying strap



Coolbag

| black | Fabric outside – plastic liner inside. Outside pockets offer plenty of room for extra items. Capacity: 12 litres. 12V connection. Adjustable carrying strap



- Ski/snowboard rack
- Ski bag
- Bicycle rack
- Coil lock
- Coolbox
- Coolbag

CARGO & CARE



Drawer for below parcel shelf

The drawer provides the ideal place to hide smaller objects away from sunlight and prying eyes



Non-slip mat

black | Non-slip mat made from oil and acid-resistant polyester. Designed to fit the contours of the trunk



Luggage nets

Available for the load sill, floor and sides of the trunk

Shopping crate

anthracite | Collapsible

Luggage-securing feature

Ingenious solution to the problem of luggage which slides around in the trunk. Attaches securely around the object in question thanks to Velcro fastening

Shallow trunk tub

Simple to clean. Non-slip thanks to Perl-M material. Suitable for transporting foodstuffs

Charger with trickle charge function

With its cutting-edge technology, the Mercedes-Benz charger ensures the longest possible battery life. Available in a 3.6 amp version (below)





Protective dust cover

Protective cover made from synthetic stretch fabric. Designed to be used in garage or other interior spaces. Keeps the car clean and protects it from dust and scratches

- Trunk tub*
- Luggage nets*
- Drawer for below parcel shelf*
- Non-slip mat*
- Luggage-securing feature*
- Charger unit*
- Protective dust cover*

CARGO & CARE





Light-alloy wheels
Bodystyling

AMG



AMG bodystyling

AMG bodystyling comprises a front apron with round, chrome-ringed fog lamps, a rear apron, side skirts and a rear spoiler lip (painted in body colour)

| also pictured on pages 26/27 |

AMG rear silencer

The chromed four-pipe exhaust combines a stunning look with a discreet, sporty sound



18" AMG 5-spoke wheel | Style VI

AMG light-alloy wheel |

Finish: titanium grey, high-shine

Wheel: 8.5 J x 18 ET 25 | Tire: 255/40 R18

Option for rear axle:

Wheel: 9.5 J x 18 ET 28 | Tire: 285/35 R18

| also available in silver, high-shine |

AMG floor mats

Embroidered with AMG lettering

| not pictured |

Further information on AMG accessories can be found in the current AMG accessories brochure



19" AMG 5-spoke wheel | Style III

AMG light-alloy wheel | Finish: titanium silver

Wheel: 8.5 J x 19 ET 25 | Tire: 255/35 R19

Option for rear axle:

Wheel: 9.5 J x 19 ET 28 | Tire: 285/30 R19



19" AMG triple-spoke wheel | Style VII

| pictured on pages 36/37 |

AMG light-alloy wheel |

Finish: titanium grey, high-sheen

Wheel: 8.5 J x 19 ET 25 | Tire: 255/35 R19

Option for rear axle:

Wheel: 9.5 J x 19 ET 28 | Tire: 285/30 R19

| also available in silver, high-sheen |

| also pictured on pages 26/27 |



19" AMG 5-spoke wheel | Style VI

AMG light-alloy wheel | Finish: silver,

high-sheen

Wheel: 8.5 J x 19 ET 25 | Tire: 255/35 R19

Option for rear axle:

Wheel: 9.5 J x 19 ET 28 | Tire: 285/30 R19

AMG door sill panels, illuminated

Brushed stainless steel | pictured |

Chrome-look version also available

| not pictured |



AMG ergonomic sports steering wheel

Sporty, contoured 4-spoke steering wheel with perforated leather trim at the sides and aluminium shift paddles | leather, black |



- Bodystyling*
- Door sill panels*
- Floor mats*
- Light-alloy wheels*

AMG

Genuine accessories for the CLS-Class

Light-alloy wheels are supplied without tires, wheel bolts or hub caps

Description	p	Item no.
All-season floor mats (complete set, black)	15	B6 668 8607
AMG light-alloy wheels:		
18" 5-spoke wheel Style VI (silver, high-sheen)	28	B6 603 0092
18" 5-spoke wheel Style IV (silver, high-sheen, for RA)	28	B6 603 0093
18" 5-spoke wheel Style VI (titanium grey, high-sheen)	28	B6 603 0086
18" 5-spoke wheel Style IV (titanium grey, high-sheen, for RA)	28	B6 603 0087
19" 5-spoke wheel Style III (titanium silver)	29	B6 603 1209
19" 5-spoke wheel Style III (titanium silver, for RA)	29	B6 603 1210
19" 5-spoke wheel Style VI (silver, high-sheen)	29	B6 603 1074
19" 5-spoke wheel Style VI (silver, high-sheen, for RA)	29	B6 603 1075
19" triple-spoke wheel Style VII (titanium grey, high-sheen)	29	B6 603 1076
19" triple-spoke wheel Style VII (titanium grey, high-sheen, for RA)	29	B6 603 1077
19" triple-spoke wheel Style VII (silver, high-sheen)	29	B6 603 1078
19" triple-spoke wheel Style VII (silver, high-sheen, for RA)	29	B6 603 1079
AMG door sill panels, illuminated, stainless steel (set of 4)	29	B6 602 1043
AMG door sill panels, not illuminated, chrome-look (set of 2)	-	B6 602 1047
AMG floor mats (complete set, anthracite)	28	B6 603 6149
AMG front apron (for models with PARKTRONIC)	28	B6 603 6487
AMG rear apron (for models with PARKTRONIC)	28	B6 603 6488
AMG side skirts	28	B6 603 0066
AMG spoiler lip (painted in body colour)	28	A219 790 0088 colour code required

Description	p	Item no.
Back cushion	14	B6 781 2370
Cleanbag	16	B6 781 2376
Coat hanger	14	B6 766 0046
Coolbag	23	A000 820 4306
Coolbox	23	A000 820 4206
Drawer for below parcel shelf	24	B6 647 2104

Description	p	Item no.
High-sheen chromed door handle recesses (set of 4)	10	on request
High-sheen chromed exterior mirror housings (set of 2)	10	B6 688 1230
Hub cap (Roadster design in black)	11	B6 647 0201
Hub cap (Roadster design in blue)	11	B6 647 0120
Hub cap (Roadster design in blue, new)	11	B6 647 0210
Hub cap (sterling silver with chrome star)	11	B6 647 0206
Hub cap (titanium silver with chrome star)	11	B6 647 0202
Illuminated door sill panels (set of 2, front)	15	B6 689 0155
incenio designer wheels		
Anahita ¹ 8-spoke wheel 18" (FA/RA)	06	B6 647 4401
Anahita ¹ 8-spoke wheel 18" (RA)	06	B6 647 4400
Menket ¹ 7-spoke wheel 18" (FA/RA)	07	B6 647 4290
Menket ¹ 7-spoke wheel 18" (RA)	07	B6 647 4291
Menket ² 7-spoke wheel 18" (FA/RA)	07	B6 647 4424
Menket ² 7-spoke wheel 18" (RA)	07	B6 647 4425
Zubenesli ¹ 5-spoke wheel 19" (FA/RA)	07	B6 647 4391
Zubenesli ¹ 5-spoke wheel 19" (RA)	07	B6 647 4392
iPod/iPhone holder	17	B6 782 4501

Description	p	Item no.
Light-alloy wheels		
5-spoke wheel ² 18" (FA/RA)	08	B6 647 4294
5-spoke wheel ² 18" (RA) (tire: 275/35 R18)	08	B6 647 4296
5-spoke wheel ² 18" (RA) (tire: 245/40 R18)	08	B6 647 4306
5-spoke wheel ² 18" (FA)	08	B6 647 4486
5-spoke wheel ² 18" (RA) (tire: 245/40 R18)	08	B6 647 4487
5-spoke wheel ² 18" (RA) (tire: 275/35 R18)	08	B6 647 4488
5-twin-spoke wheel ³ 18" (FA/RA)	09	B6 647 4489
5-twin-spoke wheel ³ 18" (RA)	09	B6 647 4485
Multi-spoke wheel ² 18" (FA/RA)	08	B6 647 4307
Multi-spoke wheel ² 18" (RA)	08	B6 647 4308
Luggage net, floor of trunk	24	B6 766 0072
Luggage net, load sill	24	B6 766 0070
Luggage net, side of trunk	24	B6 766 0071
Luggage-securing feature	24	B6 664 8220
Luggage set (for MB roof box L)	20	B6 687 0095
Luggage set (for MB roof box M)	21	B6 798 3851
Luxury head restraint cover	16	B6 798 3851

¹ Finish: sterling silver

² Finish: titanium silver

³ Finish: titanium silver/high-sheen

Genuine accessories for the CLS-Class

Description	p	Item no.
Mercedes-Benz iPod Interface Kit⁴	17	on request
Mercedes-Benz roof box S (titanium metallic, opens on right)	21	A000 840 2562
Mercedes-Benz roof box M (titanium metallic, opens on right)	21	A000 840 2362
Mercedes-Benz roof box L (titanium metallic, opens on right)	21	A000 840 2762
Mud flaps (front set, black)	09	B6 652 8225
Mud flaps (rear set, black)	09	B6 652 8226

Description	p	Item no.
New Alustyle basic carrier bars	20	B6 781 2107
New Alustyle bicycle rack	23	A000 890 0293
New Alustyle ski and snowboard rack "Comfort"	22	B6 685 1703
New Alustyle ski and snowboard rack "Standard"	22	B6 685 1702
Non-slip mat (fitted, for models without Code 287)	24	B6 768 0035
Protective dust cover	25	B6 688 5012
Rudmatic-Disc snow chain system (tires: 245/40 R18)	09	B6 755 0023

⁴ Please contact your dealer for details of availability

Description	p	Item no.
Shallow trunk tub	24	B6 664 8063
Shopping crate, collapsible	24	A203 840 0020 9B51
Ski bag for interior	22	B6 766 0022
Ski bag (single, for MB roof box M and L)	21	A000 846 0806
Ski rack insert (for MB roof box L)	21	B6 687 0114
Spectacles box (universal)	15	B6 692 0112
Transport and stowage bag	20	B6 781 2124

Description	p	Item no.
Valve caps	09	B6 647 2001
Vario bag (Alcantara, java)	16	A000 899 2061
Vario bag (Angel & Driver)	16	A000 899 1861
Vario bag (DaimlerSquare)	16	A000 899 1961
Wood/leather steering wheel (wood: bird's-eye maple leather: black)	14	on request, availability TBD
Wood/leather steering wheel (wood: burr walnut leather: black)	14	on request, availability TBD
Wood/leather steering wheel (wood: high-sheen laurel leather: black)	14	on request, availability TBD

Mercedes-Benz Canada Inc.

98 Vanderhoof Avenue

Toronto, Ontario M4G 4C9

1-800-387-0100

www.mercedes-benz.ca

© 2008 Mercedes-Benz Canada

All illustrations and specifications contained in this brochure are based on the latest product information available at the time of publication. Actual product offerings may vary from those shown or may be subject to availability delays or discontinuance. Mercedes-Benz reserves the right to make changes at any time, without notice, in colours, materials, equipment, specifications and models. Any variations in colours shown are due to reproduction variations of the printing process. Illustrations may include test situations. Some vehicles may be shown with non-Canadian equipment. Vehicles are shown with optional equipment.

Unsecured cargo can become hazardous in a collision. Always secure cargo using the floor-mounted tie-down hooks. Cargo nets and organizers are not intended to prevent objects of excessive weight and bulk from sliding or rolling in the event of a collision or sudden stop. Always drive with caution when driving with cargo.

Certain accessories may require additional components to complete the installation in your vehicle. Please consult your authorized Mercedes-Benz dealer for specific information about automotive accessories.

Call 1-800-387-0100 to obtain the Collection personal accessories catalogue or visit the www.thecollection.ca to shop online.

Printed in Canada

LZP-MBC-08-219