

IONIQ hybrid



One car.
Three different
powertrains.

Offering a choice of three different electrified powertrains that share the same sleek, modern design and purpose-engineered platform is a world first. Each of these powertrains adheres to Hyundai's unique philosophy: quite simply, electrified cars should offer all the dynamic ride and handling characteristics that make driving a pleasure.



IONIQ Plug-in Hybrid

will join the line-up in mid-2017, combining all the advantages of the IONIQ Hybrid with up to 50 km emissions-free electric driving. It can be charged from an external power source.

IONIQ Hybrid

combines a high-efficiency petrol engine and torque-rich electric motor with a sporty Dual Clutch Transmission for driving that's both economical and enjoyable.

IONIQ Electric

is driven by a high power, high torque electric motor powered by a high-capacity Lithium-Ion Polymer battery for 280 km emissions-free driving.

Inspirational design. Created by emotion.

IONIQ Hybrid

Sleekly alluring, the IONIQ Hybrid possesses an elegant presence from every angle. Its smooth lines and balanced proportions express an inspiring blend of performance and efficiency. Dynamically styled HID Bi-Xenon headlamps accentuate the prominent hexagonal grille, and the front bumper is highlighted by eye-catching LED daytime running lights and the signature blue lower lip.



Experience IONIQ in 3D!

Download the IONIQ 3D app in the App Store.
For Android devices please visit the Google Play Store.

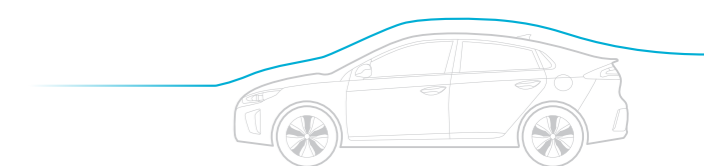




Shaped by the wind. And ingenuity.

The gentle slope of the roofline merges seamlessly into the rear spoiler. The result is a shape that is both sporty and aerodynamically efficient. With a drag coefficient of just 0.24 the IONIQ Hybrid is one of the most aerodynamic cars on the market. Sleek contours and innovative technologies combine to harness airflow so that both air resistance and emissions are minimized. This is a car that both tames the wind and electrifies the senses.

Aerodynamic Cd **0.24**



Active air flaps

Active air flaps in the grille open and close automatically in stages to enhance aerodynamic performance.

Efficiency in detail

Energy-saving LED rear combination lamps accentuate the IONIQ character.

Dynamic airflow

Alongside the LED daytime running lights are discrete intakes that minimize turbulence by directing airflow around the front wheels.





Spirited performance. Enhanced efficiency.

The inspirational design of the IONIQ Hybrid is matched by performance, ride and handling qualities that are unexpected in a hybrid car. Starting from standstill is impressive thanks to the instant torque provided by the electric motor. And the driving experience is enhanced by a Dual Clutch Transmission delivering fast, responsive gear changes for a sportier drive.

Dual Clutch Transmission

The super-efficient 6-speed DCT provides direct and rapid changes for a particularly engaging driving experience whenever you desire.



Selectable drive modes

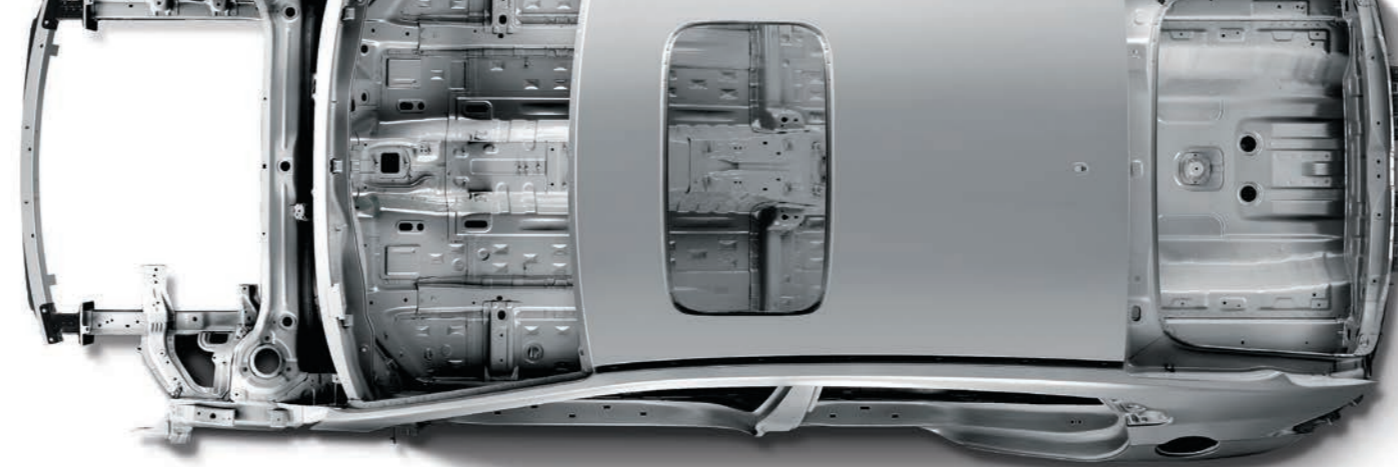
You can always adjust your driving to suit your mood by selecting either ECO or SPORT drive mode.





Direct injection petrol engine

The specially calibrated 1.6 l GDI internal combustion engine delivers 105 PS with class-leading thermal efficiency.



Advanced high-strength steel

The intelligent use of lightweight high-strength steel alloys results in a structure that, complemented by multilink rear suspension and a low centre of gravity, provides great stability with enjoyably agile handling.

Lithium-Ion Polymer battery

The 1.56 kWh high-power battery has superior charge/discharge characteristics, maximizing both electric driving and energy regeneration. The battery is backed by an extended 8-year warranty.*

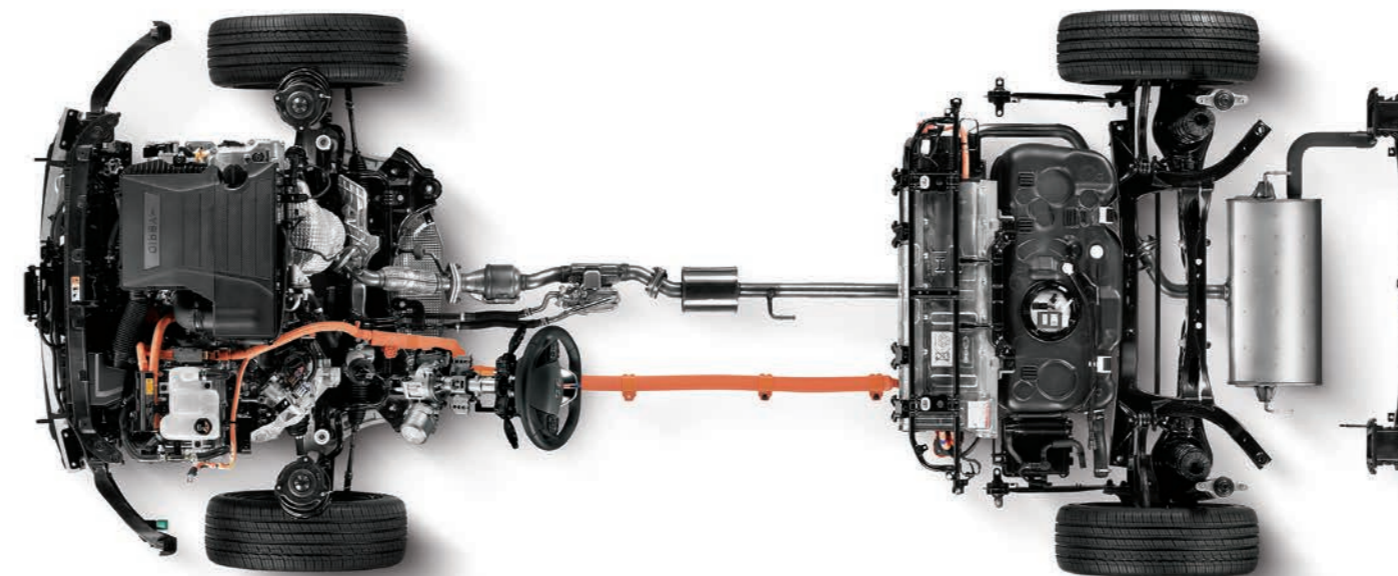


Electric motor

High torque and high efficiency are the principal attributes of the 32kW electric motor. It delivers impressive acceleration from standstill, and enables electric coasting at speeds up to 120 km/h.

Intelligent engineering. Innovative solutions.

IONIQ Hybrid is powered by a specially developed powertrain that adds driving pleasure to the economic benefits of a hybrid system. The petrol engine, electric motor and Lithium-Ion Polymer battery function together with optimal efficiency. All within a specially developed high-strength, low weight body structure.



*The battery warranty extends to 8 years or 200,000 km, whichever occurs first.

Simply pure. Purely simple.

The clean and spacious interior of the IONIQ Hybrid is charged with modern design purity. It is evident in the intuitive simplicity and clarity of all instruments, and controls which are pleasant to the touch. The D-cut steering wheel and the signature blue décor elements add a sporty look.

D-cut steering wheel



Instrument cluster

The large colour digital display provides an extensive range of driving information including speed, fuel economy and the hybrid system's energy flow. Selecting SPORT mode transforms the style and colour of the display to reflect the sportier performance.

ECO mode shown.



Wireless charging for smartphones

Compatible smartphones can be charged wirelessly via the integrated charge pad.** A helpful alert will be triggered should the phone be left behind.

** Non-compatible smartphones require a wireless charging adapter.



Connected

High levels of connectivity are accessed via the central 8" full-colour touch-screen. Apple CarPlay*, Android Auto* and the totally new navigation platform entertain and inform through every journey.

* Apple CarPlay™ is a registered trademark of Apple Inc.
Android Auto™ is a registered trademark of Google Inc.

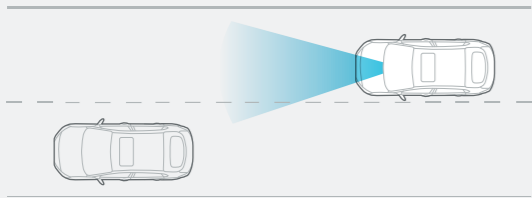


Advanced protection. Smart technology.

In addition to the protection provided by 7-airbags, all occupants benefit from a comprehensive line-up of advanced driver assistance technologies. Its cameras, radar and ultrasonic sensors help keep the IONIQ Hybrid safely on the right track.

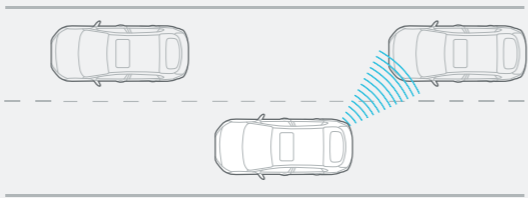
Lane keeping assist system (LKAS)

Warns the driver of unintended departure from the chosen traffic lane and applies corrective steering if necessary.



Blind spot detection (BSD)

Rear radar sensors detect the proximity of other vehicles when changing lanes or backing out of parking spaces.



Automatic emergency braking (AEB)

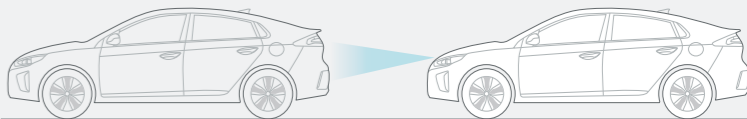
When a potential collision with a vehicle or pedestrian is detected, AEB first gives a visual and an audible warning, then intervenes with partial or complete brake application.



Smart cruise control (SCC)

Automatically maintains a safe distance to the preceding vehicle.*

* HEV only. In EV, SCC remains operational.



Seven airbags

Occupants are protected by a total of seven strategically placed airbags.





Perfection in detail. Quality in everything.



Bi-Xenon HID headlamps



Power sunroof
Chrome door handles



Rear view camera
Chrome scuff plates



Large centre console



8" navigation system



Infinity premium sound system



Ventilated front seats



Front and rear seat heating

Exterior colors



Polar white (WAW)



Platinum silver (T8S)



Aurora silver (TS7)



Phantom black (NKA)



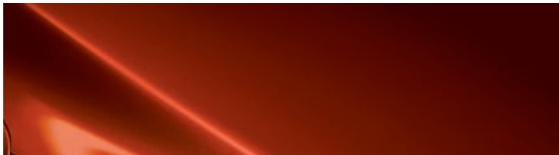
Iron gray (YT3)



Demitasse brown (RB4)



Marina blue (N4B)

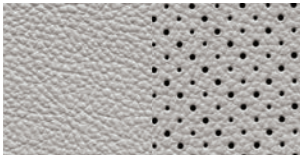


Phoenix orange (RY9)

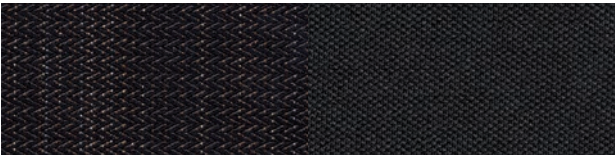
Interior colors



Leather



Leather



Woven

Wheels



15" alloy wheels



17" alloy wheels

Specifications

Engine

Type	GDI gasoline engine
Displacement (cc)	1,580
Max. power (PS / rpm)	105 / 5,700
Max. torque (Nm / rpm)	147 / 4,000

Fuel Consumption / Emissions

Fuel consumption range (l/100km combined)	3,4 - 3,9
CO2 range (g/km)	79-92

Dimensions

Head room (mm)	Front / rear (w/o sunroof)	994 / 950
Leg room (mm)	Front / rear	1,073 / 906
Shoulder room (mm)	Front / rear	1,425 / 1,396
Luggage capacity (liter)	Up to roof	550
	Rear seats down, up to roof	1,505



Driving distance, battery range and driving efficiency calculations are based on estimations and will vary based on individual driving circumstances and road conditions. Final offer and product specification may differ from those featured, contact your local Hyundai dealer for further information. Final IONIQ product may differ from images shown in this brochure. Comparisons of hybrid vehicle emissions featured consider average fuel consumptions of combustions engine vehicles.

Dealer stamp



All the information contained in this brochure is provisional and subject to change without notice and is intended only as preliminary notification. Possible variations in the representation of vehicle colours are due to the limitations of printing technology. The products shown correspond to the offer and the range of equipment for European markets. The vehicles shown in this brochure may be equipped with additional equipment at extra cost, and not all model versions are included in this brochure. Hyundai Motor Europe reserves the right to make changes to technical specifications and equipment content without notice. Please consult your Hyundai dealer for exact details. Hyundai provides a 5 Year Unlimited Mileage Warranty. *On the IONIQ Lithium-Ion-Polymer battery Hyundai provides an 8 year or 200.000 km Battery Warranty, whichever occurs first. For the 5 Year Unlimited Mileage Warranty and Battery Warranty certain terms and exclusions apply. For detailed information on these terms and exclusions, please refer to your local Hyundai website or consult a Hyundai dealership.