

SILVERADO 2020

CHEVROLET 



THE STRONGEST, MOST ADVANCED SILVERADO EVER.

Silverado 1500 Crew Cab Short Bed
LT Trail Boss 4x4 in Red Hot with
available 6.2L EcoTec3 V8 engine
and dealer-installed Tonneau Cover
from Chevrolet Accessories!

We put over 100 years of truck-building know-how into the next-generation Chevy Silverado. It starts with strong choices: eight models with bold styling and distinct personalities, along with six powerful, advanced engines. We added a hard-working bed and smart, purposeful technology to deliver towing confidence every day. Built on a legacy of dependable, long-lasting full-size pickups. There's work to be done, and now there's a perfect Silverado to do it.

FIND NEW ROADS™



¹ Accessory warranty coverage, if any, varies. See your GM Warranty Booklet or GM dealer for details.

MODELS

WORK TRUCK

Silverado Work Truck (WT) lives up to the legendary Chevrolet name stamped on the grille and tailgate.

Its Work Truck résumé starts with the rock-solid power of a standard 4.3L EcoTec3 V6 engine. Available powertrains include a 2.7L Turbo and a 5.3L EcoTec3 V8 with Active Fuel Management®. It continues with Durabed, featuring increased cargo volume, high-strength steel and 12 standard tie-downs. The hard-working WT interior has durable vinyl or available cloth seats and a rubberized vinyl floor for easy cleanup. A 7-in. diagonal colour touch-screen keeps you informed and entertained.

CUSTOM

Here's where high style and value meet.

Silverado Custom steals the spotlight with body-colour bumpers and centre grille bar along with deep-tinted glass, signature LED tail lamps and 20-in. Bright Silver-painted aluminum wheels. A 4.3L V6 engine is standard. Available engines include a 2.7L Turbo or a 5.3L EcoTec3 V8 with Active Fuel Management that features a dual-outlet exhaust with polished tips. A striking Jet Black cloth interior with matching carpeting welcomes you inside.

Top: Silverado 1500 Regular Cab Long Bed
WT in Summit White.

Bottom: Silverado 1500 Crew Cab Short Bed
Custom 4x4 in Black.



MODELS

CUSTOM TRAIL BOSS

Show the trails who's boss.

The suspension on Custom Trail Boss has a 2-in. lift right from the factory. There's also the Z71 Off-Road Package, Autotrac 2-speed transfer case and everything else you need for a day off the beaten path. Plus, you can add the available 420-horsepower 6.2L EcoTec3 V8 engine when you need some extra muscle. Goodyear Wrangler DuraTrac® tires, a Black grille, 18-in. high-gloss Black-painted aluminum wheels and Performance Red recovery hooks¹ set this off-road warrior apart from Silverado Custom.

LT

Iconic looks combine with classic capability.

LT has that essential truck appeal with chrome bumpers, centre grille bar and mirror caps complemented by body-colour door handles and available 20-in. painted-aluminum wheels. LED headlamps and daytime running lamps add signature enhancements. Capability comes from the high-output 2.7L Turbo or available 5.3L EcoTec3 V8 engine – both paired with an 8-speed automatic transmission. Technology features include an 8-in. diagonal colour touch-screen and available SiriusXM® with 360L².

Top: Silverado 1500 Crew Cab Short Bed Custom Trail Boss 4x4 in Summit White.

Bottom: Silverado 1500 Crew Cab Short Bed LT 4x4 in Satin Steel Metallic (extra-cost colour) with available features.



¹ To avoid the risk of injury, never use recovery hooks to tow a vehicle. See the Owner's Manual for more information. ² Available in 10 Canadian provinces, 3 territories and the 48 contiguous United States. Subscription sold separately after trial period. If you decide to continue your service at the end of your trial subscription, the plan you choose will automatically renew and bill at then-current rates until you call 1-888-539-7474 to cancel. Other fees and taxes will apply. All fees and programming subject to change. See the Customer Agreement for complete terms at siriusxm.ca/terms.

MODELS

RST

Sometimes it's all right to stop and stare.

RST is street art, with body-colour bumpers, centre grille bar and door handles matched with high-gloss Black mirror caps. LED lighting includes headlamps, daytime running lamps, tail lamps and fog lamps. Standards include 18-in. Bright Silver-painted aluminum wheels and the EZ-Lift power lock and release tailgate. New this year is the available 6.2L EcoTec3 V8 engine. The interior experience is enhanced with Keyless Open and Start, a remote vehicle starter system and a 40/20/40 split-bench front seat with lockable under-seat storage.

LT TRAIL BOSS

This is the boss of bosses.

LT Trail Boss is one serious off-road machine, with all the features of Custom Trail Boss, including the 2-in. lift right from the factory, plus the 5.3L EcoTec3 V8 engine with Dynamic Fuel Management or the available 6.2L EcoTec3 V8, a dual-outlet exhaust with polished tips and an auxiliary external transmission oil cooler. Because comfort and convenience are important no matter where you roam, Keyless Open and Start, a leather-wrapped steering wheel and all-weather floor liners are welcome additions.

Top: Silverado 1500 Crew Cab Short Bed RST 4x4 in Northsky Blue Metallic (extra-cost colour) with available features and Chevrolet Accessories!

Bottom: Silverado 1500 Crew Cab Short Bed LT Trail Boss 4x4 in Red Hot.



MODELS

LTZ

Everything about this truck says “premium.”

Chrome takes centre stage on LTZ, from the grille and bumpers to the mirror caps, door handles and beltline accents. The appeal continues with 18-in. Bright Silver-painted aluminum wheels. A 5.3L EcoTec3 V8 engine with Dynamic Fuel Management, an automatic locking rear differential and Advanced Trailering System are standard. A 6.2L V8 or Duramax® 3.0L Turbo-Diesel engine is available. Interior highlights include perforated leather-appointed front seating, heated driver and front outboard passenger seats and a heated leather-wrapped steering wheel.

HIGH COUNTRY

You know you’ve reached the top of the mountain.

High Country features an exclusive grille with a two-tone bronze and chrome finish. The aluminum wheels and wheel-to-wheel assist steps make a bold design statement. High-intensity discharge LED headlamps with signature curtain LED daytime running lamps complete the look. Advanced trailering features and an industry-first power up/down tailgate enhance the capability, while heated and ventilated perforated leather-appointed front bucket seats elevate the luxury.

Top: Silverado 1500 Crew Cab Short Bed LTZ 4x4 in Satin Steel Metallic (extra-cost colour) with available features and Chevrolet Accessories!

Bottom: Silverado 1500 Crew Cab Short Bed High Country 4x4 in Havana Brown Metallic (extra-cost colour) with available features and Chevrolet Accessories!



SPECIAL EDITIONS

TRAIL BOSS WITH MIDNIGHT EDITION

Everything good happens after midnight.

New for 2020, the Midnight Edition is available on Custom Trail Boss and LT Trail Boss. The darkness falls with a Black exterior complemented by Black Silverado and trim badging on the tailgate, Black tubular assist steps and Black dual-outlet exhaust tips. LT Trail Boss also adds high-intensity discharge headlamps. As if that weren't enough, this edition offers available 20-in. Black-painted aluminum wheels.

Silverado 1500 Crew Cab Short Bed LT Trail Boss 4x4
in Black with available Midnight Edition.



SPECIAL EDITIONS

RALLY EDITION

Dress it up. Take it out.

With the Rally Edition¹, offered on Custom and RST, prepare to be the centre of attention. Black highlights are everywhere, including the stripes, tubular assist steps, badging and exhaust tip(s). Custom Rally Edition adds a Black bowtie on the grille and steering wheel as well as 20-in. Black-painted aluminum wheels, while RST Rally Edition brings the heat with 22-in. high-gloss Black-painted aluminum wheels.

Silverado 1500 Crew Cab Short Bed RST 4x4 in Silver Ice Metallic with available Rally Edition.



¹ Available with Red Hot, Silver Ice Metallic, Summit White or Black exterior colours.

STRONG FROM THE START.

Silverado uses the right material in the right place to do the right job. That means high-strength steel in the frame, bed and safety cage and strong, lightweight aluminum in the doors, hood and tailgate, with everything optimized for durability, safety, mass and function.

The **frame is 88 lb. (40 kg) lighter** than its predecessor, but remarkably has 10% greater torsional rigidity. As much as 80% of the frame is made of high-strength steel.

Silverado has a longer wheelbase, a wider and taller stance, and more cargo volume, yet is **up to 450 lb. (204 kg) lighter** than the previous generation.

To help achieve a **.38 drag coefficient** and a 7.5% improvement in aerodynamics, Chevrolet engineers spent over 500 hours in the wind tunnel, testing airflow around the vehicle. All this testing paid off: Silverado is the most aerodynamic full-size pickup in Chevrolet history.



The **independent short/long arm front suspension** provides excellent wheel alignment, ride comfort and tunability with reduced weight. The live axle rear suspension includes 2-stage, semi-elliptic multi-leaf springs to strike a balance between payload management and ride quality. LT with the available 5.3L EcoTec3 V8 engine includes composite second-stage leaf springs that are durable and lightweight.

Silverado 4x4 models offer **two Autotrac transfer cases**. The 2-speed transfer case (included on Trail Boss models and High Country; included with the Z71 Off-Road Package on other models) features Auto, 2 High, 4 High and 4 Low settings. The single-speed transfer case (included on WT, Custom, LT, RST and LTZ) offers Auto, 2 High and 4 High. It also includes a Drive Mode Selector with Terrain mode, designed to optimize low-speed off-road driving.

The available **Drive Mode Selector** allows you to choose different drive modes (based on the vehicle's equipment) that alter the transmission shifts, throttle and traction systems to better handle varying road conditions. Normal is for everyday driving; Sport increases responsiveness; Tow/Haul aids in trailering; Snow is helpful in slippery conditions; Terrain optimizes low-speed driving over rough terrain; and Off-Road helps Silverado take on the rough stuff.

An **electro-hydraulic boost** or "e-boost" system produces on-demand power for smooth, reliable, consistent braking whether the truck is loaded, unloaded or hauling a heavy trailer. And the Duralife® coating helps increase rotor life.





DURABED

BEST BED IN THE BUSINESS.

Durabed is the **most functional bed of any pickup**, with a roll-formed high-strength steel floor that's stronger, lighter and more durable than a traditional stamped steel floor.

It's longer, deeper and wider than the previous generation, with **12 standard tie-downs**, nine more available removable tie-downs from Chevrolet Accessories¹, and a larger CornerStep rear bumper.

Durabed offers 89.1 cu. ft. (2523 L)² of cargo volume on Long Bed, 71.7 cu. ft. (2031 L)² on Standard Bed and 62.9 cu. ft. (1781 L)² on Short Bed.

The industry-first, Chevrolet-exclusive **power up/down tailgate** lets you easily raise or lower the tailgate using the key fob, a button in the cabin or a touchpad on the gate itself. Standard on High Country and available on LTZ.

An available **bed-mounted 120-volt AC outlet** lets you power up a laptop, charge the batteries for cordless tools and more. There's also a second available 120-volt AC outlet on the instrument panel.

¹ Accessory warranty coverage, if any, varies. See your GM Warranty Booklet or GM dealer for details. ² Cargo and load capacity limited by weight and distribution.

Silverado 1500 Crew Cab Short Bed
High Country 4x4 in Iridescent Pearl
Tricoat (extra-cost colour) with
available features.



TRAILERING

CONFIDENCE IS KEY.

What separates Silverado from the competition is the peace of mind you get from integrated towing features that deliver confidence and help make hauling big loads easy.

The available Advanced Trailering Package includes Hitch Guidance with Hitch View¹, hitch area lighting, industry-first electric parking brake

hookup assist, an integrated trailer brake controller, trailer theft alert, an in-vehicle Advanced Trailering System with the myChevrolet[®] App² and more.

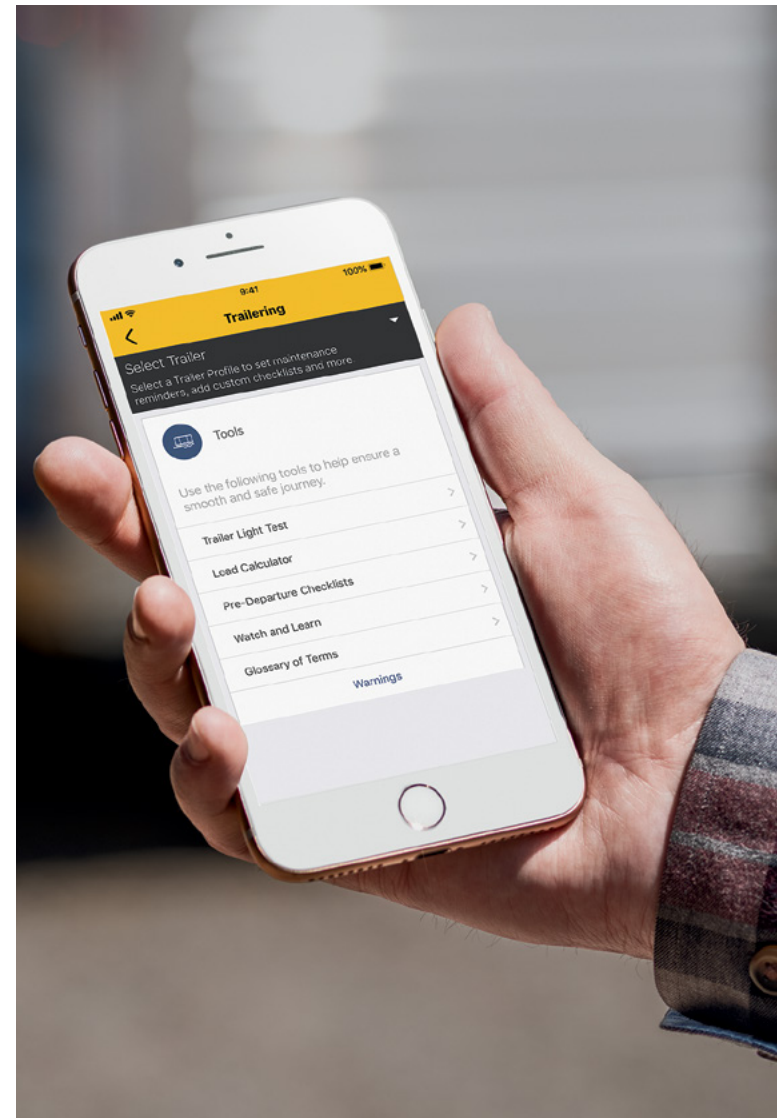
The available Advanced Trailering System features an in-vehicle app³ that offers customized trailer profiles. Other features include predeparture checklists, trailer lighting diagnostics and trailer tire pressure/temperature monitoring.⁴

¹ Safety or driver assistance features are no substitute for the driver's responsibility to operate the vehicle in a safe manner. The driver should remain attentive to traffic, surroundings and road conditions at all times. Visibility, weather and road conditions may affect feature performance. Read the vehicle Owner's Manual for important feature limitations and information. ² Device data connection required. Available on select Apple and Android devices. Some features require connected vehicle services trial or active plan and working electrical system. Service availability, features and functionality vary by model and/or vehicle configuration. Visit onstar.ca for details and limitations. ³ Available on select Silverado models with compatible hardware. App functionality and features vary with vehicle equipment and trim level. Data connection may be required. Some features require active service plan and working electrical system. Terms and limitations apply. ⁴ Does not monitor spare tire.

The Advanced Trailering System features an in-vehicle app¹ that offers customized trailer profiles. Standard on LTZ and High Country, available on LT, RST and LT Trail Boss.

myChevrolet® App with Trailering² syncs with the available Advanced Trailering System.

An integrated trailer brake controller is available.



¹ Available on select Silverado models with compatible hardware. App functionality and features vary with vehicle equipment and trim level. Data connection may be required. Some features require active service plan and working electrical system. Terms and limitations apply. ² Device data connection required. Available on select Apple and Android devices. Some features require connected vehicle services trial or active plan and working electrical system. Service availability, features and functionality vary by model and/or vehicle configuration. Visit onstar.ca for details and limitations.

CAMERA TECHNOLOGIES

SEEING IS BELIEVING.

The 2020 Silverado offers a **Technology Package** that provides multiple camera views – up to 15 total views with available accessory cameras – to help make it easier to hitch a trailer and tow with confidence.

Views enabled by these cameras are easily accessed by selecting the available Camera App on the touch-screen display. Conveniently, select views can be launched through the available **Advanced Trailering System**.

Some camera views require available accessory camera and installation. Not compatible with all trailers. See your dealer for details. Driver assistance features are no substitute for the driver's responsibility to operate the vehicle in a safe manner. The driver should remain attentive to traffic, surroundings and road conditions at all times. Visibility, weather and road conditions may affect feature performance. Read the vehicle Owner's Manual for more important feature limitations and information.



Transparent Trailer View Helps the driver to virtually “see through” a conventional hitched box or camping trailer.



Hitch View Provides a close-up view of the receiver hitch to help with alignment when connecting to a trailer.



Bed View Allows you to see inside the cargo bed to help with fifth-wheel or gooseneck hitching and to briefly check on cargo.

Safety or driver assistance features are no substitute for the driver's responsibility to operate the vehicle in a safe manner. The driver should remain attentive to traffic, surroundings and road conditions at all times. Visibility, weather and road conditions may affect feature performance. Read the vehicle Owner's Manual for more important feature limitations and information. Some camera views require available accessory camera and installation. Not compatible with all trailers. See your dealer for details.



Front Camera View Displays front view with available guidelines to assist with parking and tight manoeuvres.



Rear Camera View Displays rear view to assist with parking and tight manoeuvres.



Surround View Gives a top-down bird's-eye view of the truck's surroundings.



Front Top-Down View Provides a top-down view of the hood, bumper and front tires for tight manoeuvres in parking lots or along curbs.



Rear Top-Down View Shows the clearance between the truck bed and nearby objects.



Bowl View Provides a rear-facing 3-D surround view, useful for low-speed backing manoeuvres.

Safety or driver assistance features are no substitute for the driver's responsibility to operate the vehicle in a safe manner. The driver should remain attentive to traffic, surroundings and road conditions at all times. Visibility, weather and road conditions may affect feature performance. Read the vehicle Owner's Manual for more important feature limitations and information. Some camera views require available accessory camera and installation. Not compatible with all trailers. See your dealer for details.



Front Side View Shows the position of the front tires when parking and during tight manoeuvres.



Rear Side View Provides a line of sight down each side of the truck and trailer.



Rear Trailer View Uses an available accessory camera that can be installed to show vehicles or objects behind the trailer.



Inside Trailer View Allows the driver to monitor trailer contents or cargo using an available accessory camera that can be installed in the trailer.



Pic-In-Pic Side View Combines two views – the Rear Side View and the Rear Trailer View. Requires available accessory camera.



Rear Camera Mirror An available dual-function camera-based rear-view mirror that provides a wider, less-obstructed field of view than a traditional rear-view mirror.

Silverado 1500 Crew Cab Short Bed
High Country 4x4 in Havana Brown
Metallic (extra-cost colour) with
available features.



POWERTRAIN

THE SOURCE OF ALL POWER.



Silverado offers six different engines designed for trucks that share two things in common: Chevy DNA and the promise of bringing you the best driving truck we have ever built.

Standard on LT and RST, the **2.7L Turbo engine** generates 310 horsepower and 348 lb.-ft. of torque with no turbo lag and off-the-line acceleration that takes you from 0-96 km/h (0-60 mph) in 6.8 seconds¹

You get the best of both worlds with the available **Duramax 3.0L Turbo Diesel I-6 engine**. First, it's an efficient powerplant, delivering an estimated highway fuel consumption rating of 7.2 L/100 km^{2,3}. It's also plenty strong, with 277 horsepower, 460 lb.-ft. of torque and the ability to tow up to 9300 lb. (4218 kg)^{4,5}.

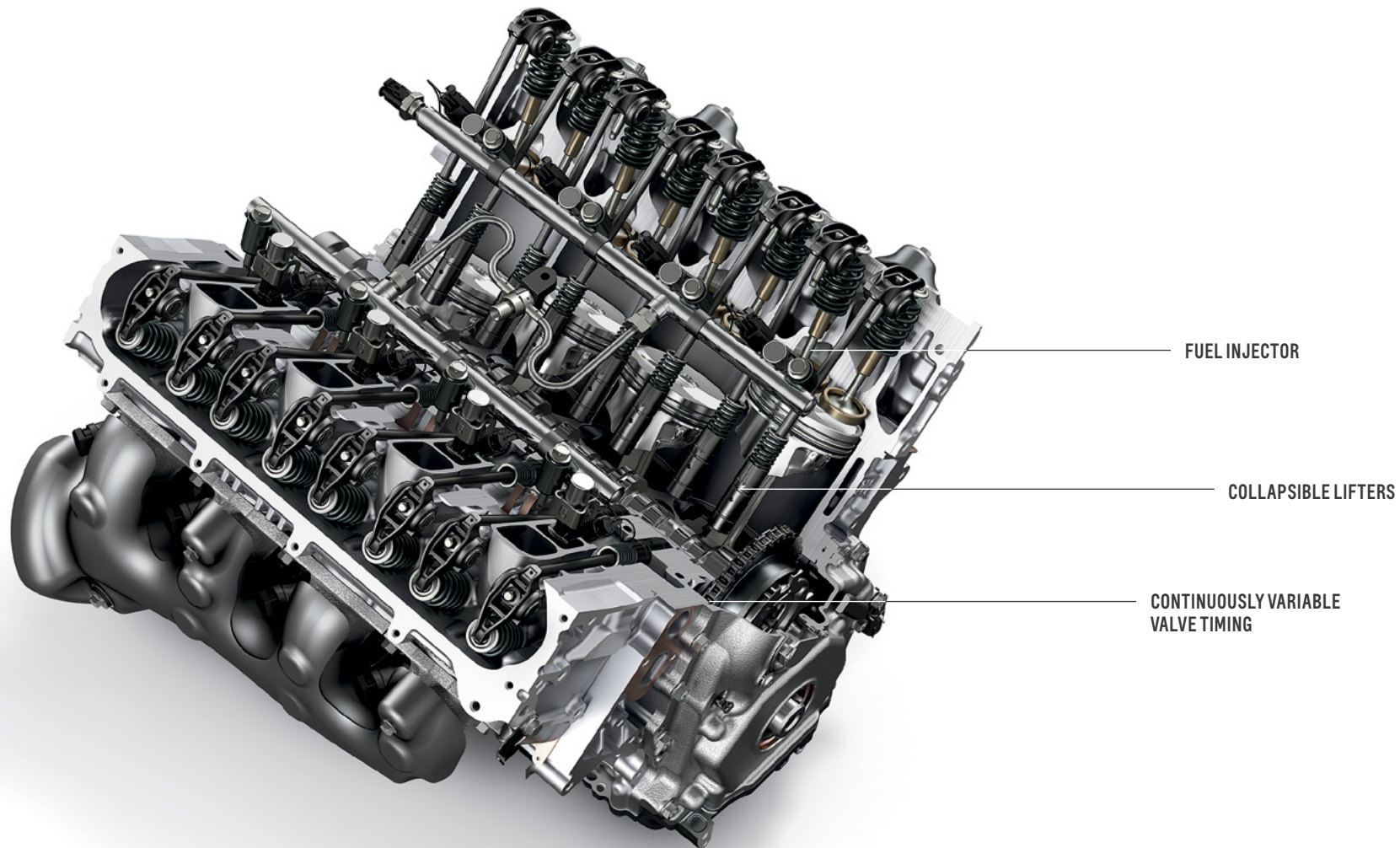
This engine has a diesel exhaust brake system that utilizes the turbocharger to create back pressure to help slow your Silverado on downhill grades.



2.7L TURBO (L3B)	3.0L TURBO-DIESEL I-6 (LM2)	4.3L ECOTEC3 V6 (LV3)	5.3L ECOTEC3 V8 (L82)	5.3L ECOTEC3 V8 (L84)	6.2L ECOTEC3 V8 (L87)
ACTIVE FUEL MANAGEMENT	DIESEL EXHAUST BRAKE SYSTEM	ACTIVE FUEL MANAGEMENT	ACTIVE FUEL MANAGEMENT	DYNAMIC FUEL MANAGEMENT	DYNAMIC FUEL MANAGEMENT
310 HP @ 5600 RPM	277 HP @ 3750 RPM	285 HP @ 5300 RPM	355 HP @ 5600 RPM	355 HP @ 5600 RPM	420 HP @ 5600 RPM
348 LB.-FT. TORQUE @ 1500 RPM	460 LB.-FT. TORQUE @ 1500 RPM	305 LB.-FT. TORQUE @ 3900 RPM	383 LB.-FT. TORQUE @ 4100 RPM	383 LB.-FT. TORQUE @ 4100 RPM	460 LB.-FT. TORQUE @ 4100 RPM
6800 lb. (3084 kg) MAX TOWING CAPABILITY^{4,6}	9300 lb. (4218 kg) MAX TOWING CAPABILITY^{4,5}	7900 lb. (3583 kg) MAX TOWING CAPABILITY^{4,8}	11,000 lb. (4990 kg) MAX TOWING CAPABILITY^{4,10}	11,600 lb. (5262 kg) MAX TOWING CAPABILITY^{4,13}	13,400 lb. (6078 kg) MAX TOWING CAPABILITY^{4,15}
11.9 L/100 km CITY/ 10.3 L/100 km HIGHWAY^{3,7}	10.2 L/100 km CITY/ 7.2 L/100 km HIGHWAY^{2,3}	15.1 L/100 km CITY/ 11.5 L/100 km HIGHWAY^{3,9}	15.9 L/100 km CITY/ 11.4 L/100 km HIGHWAY^{3,11,12}	13.9 L/100 km CITY/ 10.1 L/100 km HIGHWAY^{3,14}	15.0 L/100 km CITY/ 12.0 L/100 km HIGHWAY^{3,16}

¹ Based on initial vehicle movement. ² Fuel consumption estimate for 2WD models. For 4x4 models estimate is 10.4 L/100 km city and 8.0 L/100 km highway. ³ Fuel consumption estimates based on GM testing in accordance with Government of Canada approved test methods. Refer to vehicles.nrcan.gc.ca for details. Your actual fuel consumption will vary. ⁴ Before you buy a vehicle or use it for trailering, carefully review the Trailering section of the Owner's Manual. The weight of passengers, cargo and options or accessories may reduce the amount you can tow. ⁵ Requires Silverado 1500 Double Cab Standard Bed 4x4 or Crew Cab Short Bed 4x4. ⁶ Requires Silverado 1500 Double Cab Standard Bed 2WD, Crew Cab Short Bed 2WD or Crew Cab Standard Bed 2WD. ⁷ Fuel consumption estimate for 2WD models, except WT. For WT 2WD and 4x4 models, except WT 4x4, estimate is 12.5 L/100 km city and 10.8 L/100 km highway. For WT 4x4 estimate is 12.7 L/100 km city and 11.0 L/100 km highway. ⁸ Requires Silverado 1500 Regular Cab Long Bed 2WD. ⁹ Fuel consumption estimate for 2WD models. For 4x4 models, except Custom Trail Boss 4x4, estimate is 15.7 L/100 km city and 12.0 L/100 km highway. For Custom Trail Boss 4x4 estimate is 16.3 L/100 km city and 12.9 L/100 km highway. ¹⁰ Requires Silverado 1500 Crew Cab Short Bed Custom 4x4 with available Max Trailering Package. ¹¹ Fuel consumption estimate for 2WD models. For 4x4 models, except Custom Trail Boss 4x4, estimate is 15.9 L/100 km city and 11.8 L/100 km highway. For Custom Trail Boss 4x4 estimate is 16.7 L/100 km city and 13.1 L/100 km highway. ¹² Fuel consumption estimates for non-FlexFuel 5.3L V8 engine. ¹³ Requires Silverado 1500 Double Cab Standard Bed 2WD with available Max Trailering Package. ¹⁴ Fuel consumption estimate for 2WD models with 8-speed transmission. For 4x4 models with 8-speed transmission estimate is 14.7 L/100 km city and 10.7 L/100 km highway. For High Country 4x4 with 10-speed transmission estimate is 14.3 L/100 km city and 10.6 L/100 km highway and LT Trail Boss 4x4 with 10-speed transmission estimate is 14.7 L/100 km city and 11.2 L/100 km highway. ¹⁵ Requires Silverado 1500 Double Cab Standard Bed RST 4x4 with available Max Trailering Package and 20-in. wheels. ¹⁶ Fuel consumption estimate for 4x4 models, except LT Trail Boss 4x4 and Custom Trail Boss 4x4. For LT Trail Boss 4x4 estimate is 15.7 L/100 km city and 12.4 L/100 km highway and Custom Trail Boss 4x4 estimate is 16.8 L/100 km city and 13.3 L/100 km highway.

Dynamic Fuel Management System.
6.2L V8 engine shown.



Dynamic Fuel Management is included on the 5.3L EcoTec3 V8 engine with 8- and 10-speed transmissions as well as the available 6.2L EcoTec3 V8. A sophisticated control system continuously monitors every movement of the accelerator pedal and calculates exactly how much torque is needed to handle the current driving condition,

from highway cruising to city traffic to hauling a heavy load. Nearly instantaneously, the engine control system will activate or deactivate cylinders in an industry-first 17 different patterns to maximize fuel economy and create the power needed. And it all happens with seamless precision, so you'll never even notice.

The 2.7L Turbo, the 4.3L EcoTec3 V6 and the 5.3L EcoTec3 V8 engine with 6-speed transmission offer **Active Fuel Management**. Sensing load and demand, this feature helps improve efficiency by deactivating cylinders when power demands are light and reactivating cylinders when more power is required.

A highly efficient **10-speed automatic transmission** provides impressive refinement and performance with enhanced acceleration and torque delivery while towing. Included with the available 6.2L EcoTec3 V8, Duramax 3.0L Turbo-Diesel, and 5.3L EcoTec3 V8 with Dynamic Fuel Management on LT Trail Boss and High Country 4x4.

At left: Silverado 1500 Crew Cab Short Bed LT 4x4 in Cajun Red Tintcoat (extra-cost colour) with available features and Z71 Off-Road Package.
At right: Silverado 1500 Crew Cab Short Bed RST 4x4 in Black with available features and Z71 Off-Road Package.



Z71 OFF-ROAD PACKAGE

The Z71 Off-Road Package is available on almost every Silverado (standard on Trail Boss models; not available on Custom) and includes the **Autotrac 2-speed transfer case**, twin-tube Rancho® shocks (Rancho® monotube shocks on Trail Boss), a metal underbody shield, a heavy-duty air filter, an industry-first air filter monitor,

all-terrain tires, and more. LT, RST and LTZ add a dual-outlet exhaust with polished tips.

An **automatic locking rear differential** reacts in milliseconds to low-traction situations for improved forward motion. It provides equal power to both rear wheels, giving you the traction to help keep you moving.

Hill Descent Control uses the Anti-lock Braking System (ABS) to automatically help provide a smooth descent on steep terrain.

To keep your truck protected on the trails, the available **Z71 Off-Road and Protection Package** includes wheelhouse liners, a Chevytac spray-on

bedliner, and all-weather front and rear floor liners with the Z71 emblem.

The **Trailering Package** (standard on both Trail Boss models, LTZ and High Country; required on all other models when you choose the available Z71 Off-Road Package) includes a trailer hitch with 7-pin and 4-pin connectors.

Silverado 1500 Crew Cab Short Bed
Custom Trail Boss 4x4 in Summit White
with available features.



TRAIL BOSS

The suspensions on Custom Trail Boss and LT Trail Boss have been given a **2-in. lift right from the factory** to maximize approach, breakover and departure angles. That's in addition to the legendary Z71 Off-Road Package,

18-in. Goodyear Wrangler DuraTrac® tires, Autotrac 2-speed transfer case, automatic locking rear differential and Trailering Package, giving you what you need to leave roads behind.

Custom Trail Boss features the 285-horsepower 4.3L EcoTec3 V6 engine, or you can opt for one of two V8 engines – the available 5.3L with 355 horsepower or the 6.2L with 420 horsepower.

Black Chevrolet bowtie emblems, a Black grille, 18-in. high-gloss Black-painted aluminum wheels and Performance Red recovery hooks¹ provide a distinctive look.

¹ To avoid the risk of injury, never use recovery hooks to tow a vehicle. See the Owner's Manual for more information.

Silverado 1500 Crew Cab Short Bed
LT Trail Boss 4x4 in Red Hot.



LT Trail Boss is highlighted by the 5.3L EcoTec3 V8 engine with Dynamic Fuel Management or available 6.2L EcoTec3 V8 – both with a 10-speed automatic transmission – plus a dual-outlet exhaust with polished tips

and an auxiliary external transmission oil cooler. LED headlamps, tail lamps, fog lamps and cargo area lighting are standard, as is an EZ-Lift power lock and release tailgate. In addition,

there's a leather-wrapped steering wheel, remote vehicle starter system, Keyless Open and Start and all-weather floor liners with Z71 emblems.

Silverado 1500 Crew Cab Short Bed
High Country 4x4 in Havana Brown
Metallic (extra-cost colour) with
available features.




HIGH COUNTRY

REACH HIGHER.

- Exclusive grille and centre grille bar with two-tone bronze and chrome finish, as well as chrome wheel-to-wheel assist steps.
- High-intensity discharge LED headlamps and 20-in. machined-face aluminum wheels.
- Industry-first power up/down tailgate.
- 5.3L EcoTec3 V8 or available 6.2L EcoTec3 V8 or Duramax 3.0L Turbo-Diesel I-6 engine.
- Advanced Trailering System.
- Interior in Jet Black or Jet Black with Umber accents includes heated and ventilated perforated leather-appointed front bucket seats and heated rear outboard seats.
- Bose premium 7-speaker sound system and Chevrolet Infotainment 3 Premium system¹ with Navigation²
- Advanced safety features include Rear Cross Traffic Alert³, Lane Change Alert with Side Blind Zone Alert³, and Front and Rear Park Assist³. Adaptive Cruise Control – Camera³ is available.

¹ Chevrolet Infotainment System functionality varies by model. Full functionality requires compatible Bluetooth and smartphone, and USB connectivity for some devices. Data plan rates may apply. ² Detailed map coverage is available for most major urban areas of the United States and for certain metropolitan areas of Canada (Vancouver, Calgary, Edmonton, Winnipeg, Windsor, London, Toronto, Ottawa, Montreal, Quebec City and Halifax). Coverage is significantly limited outside these areas. ³ Read the vehicle Owner's Manual for important feature limitations and information.



High Country interior in Jet Black with Umber accents and available features.

INTERIOR DESIGN

ROOM TO ROAM.

- Large exterior proportions allow for an expanded interior cabin, which contributes to ample headroom and legroom.
- Front seating has been raised by 38 mm (1.5 in.) compared to the previous generation for a more commanding view of the road.
- The intuitive interior, designed with durable materials, includes large buttons and knobs that can be adjusted with gloved hands.
- Large upper and lower gloveboxes, three front cupholders and an instrument panel storage pad are standard.
- Rear-seat heating and cooling vents are standard in Double Cab and Crew Cab models.
- Under certain conditions, the Rear Seat Reminder¹ feature alerts you to double-check for valuables left behind.
- Acoustic panels located in fixed seatbacks help dampen noise and reduce squeaks, and dissipative carpet technology absorbs sound to create a quiet cabin.

¹ Does not detect people or items. Always check rear seat before exiting. Read the vehicle Owner's Manual for important feature limitations and information.



TECHNOLOGY

TECH THAT CONNECTS.

- The Chevrolet Infotainment 3 system¹ is intuitive and easy to use, with a simplified 7-in. or 8-in. diagonal colour touch-screen display.
- Enjoy music, talk, sports, comedy and news with SiriusXM,² 24/7, in your car, online or on the app, during your All Access trial period. SiriusXM[®] with 360L² is standard on LTZ and High Country, and available on LT, RST and LT Trail Boss. SiriusXM^{®2} is available on Custom and Custom Trail Boss.

¹ Chevrolet Infotainment System functionality varies by model. Full functionality requires compatible Bluetooth and smartphone, and USB connectivity for some devices. Data plan rates may apply. ² Available in 10 Canadian provinces, 3 territories and the 48 contiguous United States. Subscription sold separately after trial period. If you decide to continue your service at the end of your trial subscription, the plan you choose will automatically renew and bill at then-current rates until you call 1-888-539-7474 to cancel. Other fees and taxes will apply. All fees and programming subject to change. See the Customer Agreement for complete terms at siriusxm.ca/terms.

A USB port¹ is standard, up to 6 USB ports¹ are available, depending on the model.

Apple CarPlay^{®2} integration for your iPhone[®] (shown) and Android Auto^{™3} compatibility.

Available Chevrolet Infotainment 3 Premium system⁴ with Navigation⁵

A segment-first 15-in. diagonal multi-colour Head-Up Display is available on LTZ and High Country.



¹ Not compatible with all devices. ² Vehicle user interface is a product of Apple and its terms and privacy statements apply. Requires compatible iPhone and data plan rates apply. ³ Vehicle user interface is a product of Google and its terms and privacy statements apply. Requires the Android Auto app on Google Play and an Android compatible smartphone running Android 5.0 or higher. Data plan rates apply. ⁴ Chevrolet Infotainment System functionality varies by model. Full functionality requires compatible Bluetooth and smartphone, and USB connectivity for some devices. Data plan rates may apply. ⁵ Detailed map coverage is available for most major urban areas of the United States and for certain metropolitan areas of Canada (Vancouver, Calgary, Edmonton, Winnipeg, Windsor, London, Toronto, Ottawa, Montreal, Quebec City and Halifax). Coverage is significantly limited outside these areas.

SAFETY AND DRIVER ASSISTANCE

A COMMITMENT TO SAFETY IS ONE OF OUR GREATEST STRENGTHS.



Automatic Emergency Braking. At speeds below 80 km/h, if an imminent front-end collision is detected with a vehicle you are following, the feature can alert you and can automatically apply hard emergency braking or enhance driver hard braking. Available on LTZ and High Country.



Following Distance Indicator and Forward Collision Alert. These features monitor how close your vehicle is to the detected vehicle in front of you and can alert you to a potential crash. Available on LTZ and High Country.



Lane Keep Assist with Lane Departure Warning. At speeds above 60 km/h, this feature monitors identifiable road lines and can gently turn the steering wheel to help keep the vehicle in its lane or provide an alert if a lane marker is unintentionally crossed. Available on LTZ and High Country.



Front Pedestrian Braking. At speeds below 80 km/h, if an imminent collision with a pedestrian directly ahead is detected, the feature can alert you and can even apply last-second emergency braking. Performance is limited at night. Available on LTZ and High Country.



Rear Cross Traffic Alert. This feature can alert you to detected vehicles crossing behind your Silverado when backing up. Standard on High Country; available on WT, LT, RST, LT Trail Boss and LTZ.



Rear Vision Camera. When travelling in Reverse at low speeds, this feature helps provide a view of the area immediately behind your Silverado. Standard on all models.



Front and Rear Park Assist. At low speeds, this feature can provide distance alerts to nearby detected objects to help you park. Standard on High Country; available on WT, LT, RST, LT Trail Boss and LTZ.



IntelliBeam® headlamps. When oncoming headlamps are sensed or when tail lamps are detected, this feature intuitively adjusts between low and high beams. Available on LTZ and High Country.



Lane Change Alert with Side Blind Zone Alert. This feature can provide side mirror alerts when it detects fast-approaching vehicles in adjacent lanes as well as moving vehicles in the side mirror blind zones. Standard on High Country; available on WT, LT, RST, LT Trail Boss and LTZ.



Safety Alert Seat. This feature gives you the option of getting directional vibration pulses from the driver seat instead of beeps to indicate the direction of potential threats. Available on LTZ and High Country.

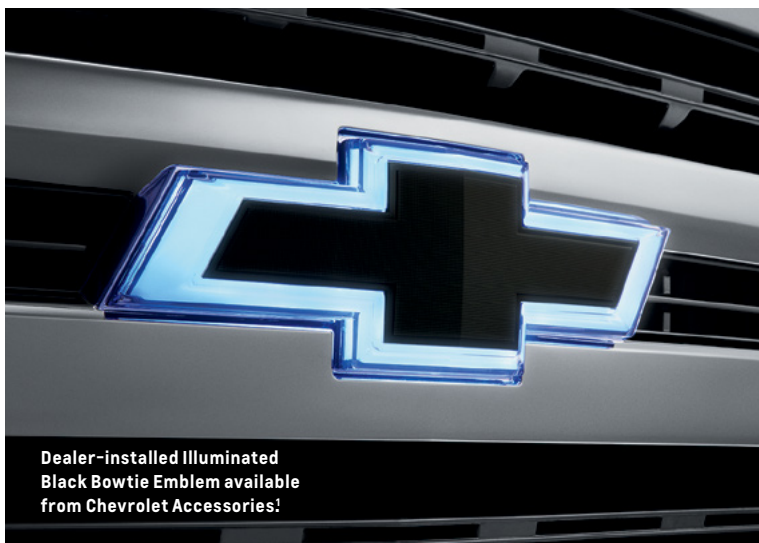


Adaptive Cruise Control – Camera. Using camera technology, this feature can automatically adapt cruise control speed to maintain a following gap to vehicles detected ahead. Available on LTZ and High Country.

Safety starts with you. Safety or driver assistance features are no substitute for the driver's responsibility to operate the vehicle in a safe manner. The driver should remain attentive to traffic, surroundings and road conditions at all times. Visibility, weather and road conditions may affect feature performance. Read the vehicle Owner's Manual for more important feature limitations and information.



ACCESSORIES



EXTERIOR COLOURS



G1W – Iridescent Pearl Tricoat^{1,2}



G2X – Havana Brown Metallic^{1,3}



G7C – Red Hot⁴



G9K – Satin Steel Metallic¹



GA0 – Northsky Blue Metallic¹



GAN – Silver Ice Metallic⁵



GAZ – Summit White⁶



GBA – Black



GJI – Shadow Grey Metallic^{1,5}



GPJ – Cajun Red Tintcoat^{1,6}

¹ Available at extra cost. ² Not available on WT, Custom or Custom Trail Boss. ³ Not available on Regular Cab models. ⁴ Not available on LTZ or High Country. ⁵ Not available on High Country. ⁶ Not available on WT.

MODEL AVAILABILITY

● AVAILABLE – NOT AVAILABLE

TRIM LEVEL	STANDARD ENGINE	AVAILABLE ENGINES	2WD	4x4	REGULAR CAB LONG BED	DOUBLE CAB STANDARD BED	CREW CAB SHORT BED	CREW CAB STANDARD BED
WT	4.3L EcoTec3 V6 (LV3)	2.7L Turbo (L3B), 5.3L EcoTec3 V8 (L82)	●	●	●	●	●	●
CUSTOM	4.3L EcoTec3 V6 (LV3)	2.7L Turbo (L3B), 5.3L EcoTec3 V8 (L82)	●	●	–	●	●	●
CUSTOM TRAIL BOSS	4.3L EcoTec3 V6 (LV3)	5.3L EcoTec3 V8 (L82), 6.2L EcoTec3 V8 (L87)	–	●	–	●	●	●
LT	2.7L Turbo (L3B)	5.3L EcoTec3 V8 (L84), Duramax 3.0L I-6 ¹ (LM2)	●	●	–	●	●	●
RST	2.7L Turbo (L3B)	5.3L EcoTec3 V8 (L84), 6.2L EcoTec3 V8 (L87), Duramax 3.0L I-6 ¹ (LM2)	●	●	–	●	●	●
LT TRAIL BOSS	5.3L EcoTec3 V8 (L84)	6.2L EcoTec3 V8 (L87)	–	●	–	–	●	●
LTZ	5.3L EcoTec3 V8 (L84)	6.2L EcoTec3 V8 (L87), Duramax 3.0L I-6 ¹ (LM2)	●	●	–	●	●	●
HIGH COUNTRY	5.3L EcoTec3 V8 (L84)	6.2L EcoTec3 V8 (L87), Duramax 3.0L I-6 (LM2)	–	●	–	–	●	●

STANDARD EQUIPMENT

Standard on every Silverado:

MECHANICAL
Battery – run-down protection system with retained accessory power
Brakes – power, 4-wheel disc with Duralife rotors and 4-wheel Anti-lock Braking System (ABS)
Frame – fully boxed frame with hydroformed front section
StabiliTrak [®] – Electronic Stability Control System with Proactive Roll Avoidance, Traction Control, Electronic Trailer Sway Control and Hill Start Assist
Steering – rack-and-pinion with Electric Power Steering (EPS) assist
EXTERIOR
Bumper – rear CornerStep
Cargo area lighting – integrated with centre high-mounted stop lamp
Fuel filler – capless fuelling
Lighting – daytime running lamps with exterior automatic lamp control
Pickup bed – Durabed
Tailgate and bed rail – protection cap
Tie-downs – 12 fixed cargo tie-downs, rated at 500 lb. (227 kg) ² per corner
Tire – carrier lock
Tire – full-size spare

INTERIOR
Airbags ³ – dual-stage frontal airbags for driver and front outboard passenger; seat-mounted side-impact airbags for driver and front outboard passenger; head-curtain airbags for front and rear outboard seating positions; includes front outboard Passenger Sensing System for frontal outboard passenger airbag
Air conditioning – with rear-seat air vents (Double Cab and Crew Cab)
Assist handles – driver and front passenger, A-pillar; rear passenger, B-pillar
Connectivity – Bluetooth [®] phone connectivity and wireless audio streaming ⁴ and Apple CarPlay ^{®5} and Android Auto ^{™6} compatibility
Door locks – manual (Regular Cab); power programmable with lock-out protection and manual rear door child security (Double Cab and Crew Cab)
Instrument cluster – 6-gauge with speedometer, fuel level, engine temperature, tachometer, voltage and oil pressure
Media – USB port ⁷
Power outlet – 12-volt auxiliary, front
Rear Seat Reminder ⁸ (Double Cab and Crew Cab)
Rear Vision Camera ⁹
Teen Driver technology
Temperature display – outside, located in radio
Tire Pressure Monitoring System – with Tire Fill Alert (does not monitor spare tire)
Windows – manual (Regular Cab); power with driver express-up/-down, all others express-down (Double Cab and Crew Cab)

¹ Not available on Crew Cab Standard Bed 2WD model. ² These maximum payload ratings are intended for comparison purposes only. Before you buy a vehicle or use it to haul people or cargo, carefully review the Vehicle Loading section of the Owner's Manual and check the carrying capacity of your specific vehicle on the label on the inside of the driver door jamb. ³ A NOTE ON CHILD SAFETY: Always use seat belts and the correct child restraint for your child's age and size, even with airbags. Even in vehicles equipped with the Passenger Sensing System, children are safer when properly secured in a rear seat in the appropriate infant, child or booster seat. Never place a rear-facing infant restraint in the front seat of any vehicle equipped with an active frontal airbag. See your vehicle Owner's Manual and the child safety seat instructions for more safety information. ⁴ Visit my.gm.ca/Chevrolet/en/learnAbout/bluetooth for more information. Full Bluetooth feature functionality varies by device, model and/or vehicle configuration, and software version. ⁵ Vehicle user interface is a product of Apple and its terms and privacy statements apply. Requires compatible iPhone and data plan rates apply. ⁶ Vehicle user interface is a product of Google and its terms and privacy statements apply. Requires the Android Auto app on Google Play and an Android compatible smartphone running Android 5.0 or higher. Data plan rates apply. ⁷ Not compatible with all devices. ⁸ Does not detect people or items. Always check rear seat before exiting. ⁹ Read the vehicle Owner's Manual for important feature limitations and information.

PAYLOAD AND TRAILER WEIGHT RATINGS

MODEL	ENGINE	MAX. PAYLOAD ¹	MAX. CONVENTIONAL TRAILER WEIGHT ²
REGULAR CAB		lb. (kg)	lb. (kg)
Long Bed 2WD	4.3L V6	2250 (1021)	7900 (3583)
	5.3L V8 (L82) with 6-speed	2180 (989)	10,000 (4536)
Long Bed 4x4	4.3L V6	2130 (966)	7700 (3493)
	5.3L V8 (L82) with 6-speed	2070 (939)	9800 (4445)
DOUBLE CAB			
Standard Bed 2WD	2.7L Turbo	2070 (939)	6800 (3084)
	4.3L V6	2040 (925)	7700 (3493)
	5.3L V8 (L82) with 6-speed	1970 (894)	9700 (4400)
	5.3L V8 (L84) with 8-speed	1980 (898)	9800 (4445)
	Duramax 3.0L I-6	1780 (807)	7600 (3447)
Standard Bed 2WD with Max Trailering Package	5.3L V8 (L84) with 8-speed	2190 (993)	11,600 (5262)
Standard Bed 4x4	2.7L Turbo	2050 (930)	6600 (2994)
	4.3L V6	2020 (916)	7500 (3402)
	5.3L V8 (L82) with 6-speed	1950 (885)	9500 (4309)
	5.3L V8 (L84) with 8-speed	1970 (894)	9600 (4355)
	6.2L V8	1690 (767)	9300 (4218)
	Duramax 3.0L I-6	1770 (803)	9300 (4218)
Standard Bed 4x4 with Max Trailering Package	5.3L V8 (L84) with 8-speed	2180 (989)	11,400 (5171)
	6.2L V8	2090 (948)	12,100 (5489)
Standard Bed RST 4x4 with Max Trailering Package and 20" Wheels	6.2L V8	2090 (948)	13,400 (6078)
Standard Bed Trail Boss 4x4	4.3L V6	1770 (803)	7400 (3357)
	5.3L V8 (L82) with 6-speed	1670 (758)	9500 (4309)
	5.3L V8 (L84) with 10-speed	1680 (762)	9400 (4264)
	6.2L V8	1780 (807)	9300 (4218)
CREW CAB			
Short Bed 2WD	2.7L Turbo	2060 (934)	6800 (3084)
	4.3L V6	2040 (925)	7700 (3493)
	5.3L V8 (L82) with 6-speed	2060 (934)	9700 (4400)
	5.3L V8 (L84) with 8-speed	2060 (934)	9800 (4445)
	Duramax 3.0L I-6	1870 (848)	7600 (3447)
Short Bed 2WD with Max Trailering Package	5.3L V8 (L84) with 8-speed	2180 (989)	11,500 (5216)

MODEL	ENGINE	MAX. PAYLOAD ¹	MAX. CONVENTIONAL TRAILER WEIGHT ²
CREW CAB (CONTINUED)		lb. (kg)	lb. (kg)
Standard Bed 2WD	2.7L Turbo	1990 (903)	6800 (3084)
	4.3L V6	1960 (889)	7600 (3447)
	5.3L V8 (L82) with 6-speed	1990 (903)	9600 (4355)
	5.3L V8 (L84) with 8-speed	1990 (903)	9700 (4400)
Standard Bed 2WD with Max Trailering Package	5.3L V8 (L84) with 8-speed	2110 (957)	11,400 (5171)
Short Bed 4x4	2.7L Turbo	2050 (930)	6600 (2994)
	4.3L V6	2020 (916)	7500 (3402)
	5.3L V8 (L82) with 6-speed	2050 (930)	9500 (4309)
	5.3L V8 (L84) with 8-speed	2060 (934)	9600 (4354)
	5.3L V8 (L84) with 10-speed	2060 (934)	9300 (4218)
	6.2L V8	1670 (757)	9200 (4173)
	Duramax 3.0L I-6	1870 (848)	9300 (4218)
Short Bed 4x4 with Custom Max Trailering Package	5.3L V8 (L82) with 6-speed	2050 (930)	11,000 (4990)
Short Bed 4x4 with Max Trailering Package	5.3L V8 (L84) with 8-speed	2170 (984)	11,300 (5126)
	6.2L V8	2060 (934)	12,000 (5443)
Short Bed Trail Boss 4x4	4.3L V6	1770 (803)	7400 (3357)
	5.3L V8 (L82) with 6-speed	2050 (930)	9500 (4309)
	5.3L V8 (L84) with 10-speed	1770 (803)	9400 (4264)
	6.2L V8	1780 (807)	9300 (4218)
Standard Bed 4x4	2.7L Turbo	2000 (907)	6600 (2994)
	4.3L V6	1970 (894)	7400 (3357)
	5.3L V8 (L82) with 6-speed	2000 (907)	9500 (4309)
	5.3L V8 (L84) with 8-speed	2010 (912)	9500 (4309)
	5.3L V8 (L84) with 10-speed	2010 (912)	9200 (4173)
	6.2L V8	1600 (726)	9100 (4128)
	Duramax 3.0L I-6	1850 (839)	9200 (4173)
Standard Bed 4x4 with Max Trailering Package	5.3L V8 (L84) with 8-speed	2130 (966)	11,300 (5126)
	6.2L V8	2010 (912)	11,900 (5398)
Standard Bed Trail Boss 4x4	4.3L V6	1710 (776)	7300 (3311)
	5.3L V8 (L82) with 6-speed	1710 (776)	9400 (4264)
	5.3L V8 (L84) with 10-speed	1720 (780)	9400 (4264)
	6.2L V8	1780 (807)	9300 (4218)

¹ These maximum payload ratings are intended for comparison purposes only. Before you buy a vehicle or use it to haul people or cargo, carefully review the Vehicle Loading section of the Owner's Manual and check the carrying capacity of your specific vehicle on the label on the inside of the driver door jamb. ² Conventional trailer towing weight. Before you buy a vehicle or use it for trailering, carefully review the Trailering section of the Owner's Manual. The weight of passengers, cargo and options or accessories may reduce the amount you can tow.

MODELS



Jet Black Vinyl (shown)

Jet Black Cloth



17" Ultra Silver-Painted Steel Wheels (RD6)
Standard on WT



17" Bright Silver-Painted Aluminum Wheels (Q5U)
Available on WT

WORK TRUCK (WT) In addition to standard features, WT includes:

MECHANICAL

Engine – 4.3L EcoTec3 V6

Exhaust – single-outlet

Rear axle ratio – 3.42

Transmission – 6-speed automatic with overdrive, Tow/Haul mode and Grade Braking

EXTERIOR

Bumpers – semi-gloss Black, front and rear

Door handles – Black

Glass – solar-absorbing tinted

Grille – Chevrolet lettered grille, Black front grille bar and mesh inserts with small Gold bowtie emblem

Headlamps – halogen reflector headlamps and daytime running lamps

Mirrors – manual-adjustable, Black

Recovery hooks¹ – Black (4x4 models)

Tail lamps – incandescent

Tailgate – manual lift with lock

Tires – P255/70R17 all-season¹

INTERIOR

Air conditioning – single-zone

Audio – 2-speaker system (Regular Cab); 6-speaker system (Double Cab and Crew Cab)

Driver Information Centre – 3.5-in. diagonal monochromatic display

Entertainment – Chevrolet Infotainment 3 system² with 7-in. diagonal colour touch-screen, AM/FM stereo, Bluetooth[®] audio streaming³ for two active devices, voice command pass-through to compatible phone, and Apple CarPlay^{™4} and Android Auto^{™5} compatibility


Floor covering – rubberized vinyl

INTERIOR (CONTINUED)

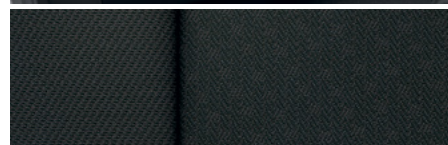
Seat – front 40/20/40 split-bench with manual 4-way driver and front-passenger seat adjusters

Seat – rear 60/40 split-folding bench (Double Cab and Crew Cab)

Steering column – manual tilt-wheel with theft-deterrent locking feature

¹ To avoid the risk of injury, never use recovery hooks to tow a vehicle. See the Owner's Manual for more information. ² Chevrolet Infotainment System functionality varies by model. Full functionality requires compatible Bluetooth and smartphone, and USB connectivity for some devices. Data plan rates may apply. ³ Visit my.gm.ca/Chevrolet/en/learnAbout/bluetooth for more information. Full Bluetooth feature functionality varies by device, model and/or vehicle configuration, and software version. ⁴ Vehicle user interface is a product of Apple and its terms and privacy statements apply. Requires compatible iPhone and data plan rates apply. ⁵ Vehicle user interface is a product of Google and its terms and privacy statements apply. Requires the Android Auto app on Google Play and an Android compatible smartphone running Android 5.0 or higher. Data plan rates apply. † All-season tires may not satisfy winter tire requirements in all regions of the country. Tires specifically designed for severe winter conditions and marked with the "winter tire" symbol  may be required during certain months or in certain regions. Contact your Provincial, Municipal or local road authority for information regarding which tires are required in your particular area.

MODELS (CONTINUED)



Jet Black Cloth



20" Bright Silver-Painted Aluminum Wheels (NZP)
Standard on Custom



20" Black-Painted Aluminum Wheels (RD5)
Available on Custom with Rally Edition

CUSTOM In addition to or replacing WT features, Custom includes:

EXTERIOR

Bumpers – body-colour, front and rear

Glass – deep-tinted behind front doors

Grille – Chevrolet lettered grille, body-colour grille bar and Black mesh inserts with small Gold bowtie emblem

Mirrors – power remote control, heated

Recovery hooks¹ – Black (all models)

Tail lamps – LED

Tires – P275/60R20 all-season[†]


INTERIOR

Cruise control – electronic with set and resume speed, steering wheel-mounted controls

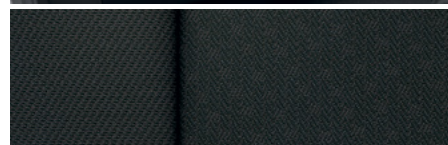
Floor covering – colour-keyed carpeting

Floor mats – vinyl, front and rear

Remote Keyless Entry

¹ To avoid the risk of injury, never use recovery hooks to tow a vehicle. See the Owner's Manual for more information. [†] All-season tires may not satisfy winter tire requirements in all regions of the country. Tires specifically designed for severe winter conditions and marked with the "winter tire" symbol  may be required during certain months or in certain regions. Contact your Provincial, Municipal or local road authority for information regarding which tires are required in your particular area.

MODELS (CONTINUED)



Jet Black Cloth

CUSTOM TRAIL BOSS In addition to or replacing Custom features, Custom Trail Boss includes:

MECHANICAL

Air filter – heavy-duty

Differential – heavy-duty, automatic locking rear

Suspension Package – Z71 Off-Road Package, Off-Road suspension with 2-in. factory lift and monotube shocks, Hill Descent Control, skid plates and Z71 hard badge

Trailer Package – trailer hitch, 7-pin and 4-pin connectors, and Hitch Guidance¹

Transfer case – Autotrac 2-speed electronic

EXTERIOR

Bumpers – high-gloss Black, front and rear

Grille – Chevrolet lettered grille, high-gloss Black bar and mesh inserts with Z71 badge

Recovery hooks² – Performance Red

Tires – LT275/65R18 Goodyear Wrangler DuraTrac®



18" High-Gloss Black-Painted Aluminum Wheels (RD1)
Standard on Custom Trail Boss



20" Painted-Aluminum Wheels with Machined Face
and Gray Accent Pockets (NZT)
Available on Custom Trail Boss



20" Black-Painted Aluminum Wheels (RD5)
Available on Custom Trail Boss with Midnight Edition

¹ Read the vehicle Owner's Manual for important feature limitations and information. ² To avoid the risk of injury, never use recovery hooks to tow a vehicle. See the Owner's Manual for more information.

MODELS (CONTINUED)



LT In addition to or replacing WT features, LT includes:

MECHANICAL

Engine – 2.7L Turbo with auto stop/start feature

Transmission – 8-speed automatic with overdrive, Tow/Haul mode and Grade Braking

EXTERIOR

Bumpers – chrome, front and rear

Door handles – body-colour

Glass – deep-tinted behind front doors

Grille – Gold bowtie emblem and chrome grille bars with high-gloss Black mesh inserts

Headlamps – LED reflector with LED signature daytime running lamps

Mirror caps – chrome

Mirrors – power remote control, heated

Tailgate – manual with EZ-Lift

INTERIOR

Air conditioning – single-zone manual, semi-automatic

Compass display – located in instrument cluster

Cruise control – electronic with set and resume speed

Driver Information Centre – 4.2-in. diagonal colour display and driver personalization

Entertainment – Chevrolet Infotainment 3 system¹ with 8-in. diagonal colour touch-screen, AM/FM stereo, Bluetooth[®] audio streaming² for two active devices, voice command pass-through to compatible phone, and Apple CarPlay^{®3} and Android Auto^{™4} compatibility

Floor covering – colour-keyed carpeting

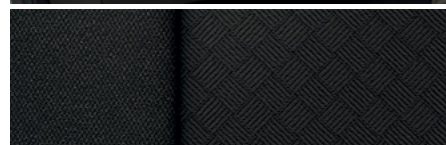
Floor mats – vinyl, front and rear

Media – two USB ports⁵ on instrument panel

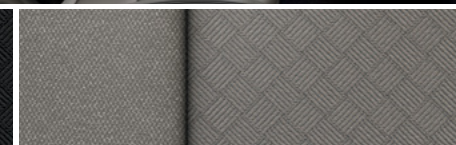
Remote Keyless Entry

Seat – front 40/20/40 split-bench with covered armrest storage

Steering wheel – mounted audio, cruise and phone controls



Jet Black Cloth



Gideon Cloth⁶



Jet Black Leather-Appointed Seating Surfaces



Gideon Leather-Appointed Seating Surfaces (shown)⁶



17" Bright Silver-painted aluminum wheels (Q5U)
Standard on LT



18" Bright Silver-painted aluminum wheels (PZX)
Available on LT



20" painted-aluminum wheels with machined face
and Argent Metallic Pockets (RD4)
Available on LT

¹ Chevrolet Infotainment System functionality varies by model. Full functionality requires compatible Bluetooth and smartphone, and USB connectivity for some devices. Data plan rates may apply. ² Visit my.gm.ca/Chevrolet/en/learnAbout/bluetooth for more information. Full Bluetooth feature functionality varies by device, model and/or vehicle configuration, and software version. ³ Vehicle user interface is a product of Apple and its terms and privacy statements apply. Requires compatible iPhone and data plan rates apply. ⁴ Vehicle user interface is a product of Google and its terms and privacy statements apply. Requires the Android Auto app on Google Play and an Android compatible smartphone running Android 5.0 or higher. Data plan rates apply. ⁵ Not compatible with all devices. ⁶ Not available with Red Hot exterior colour.

MODELS (CONTINUED)



RST In addition to or replacing LT features, RST includes:

EXTERIOR

Bumpers – body-colour, front and rear

Cargo area lighting – LED, in pickup bed, key fob-activated

Fog lamps – LED

Grille – Black bowtie emblem and body-colour grille bars with high-gloss Black mesh inserts

Mirror caps – high-gloss Black

Recovery hooks¹ – Black (all models)

Tail lamps – LED

Tailgate – EZ-Lift, includes power lock and release

Tires – P265/65R18 all-season[†]

INTERIOR

Defogger – rear-window

Keyless Open and Start

Media – two USB ports² in second row, charge-only

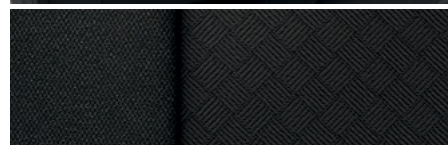
Power outlet – 12-volt auxiliary, rear

Seat – front 40/20/40 split-bench with covered armrest storage and lockable under-seat storage

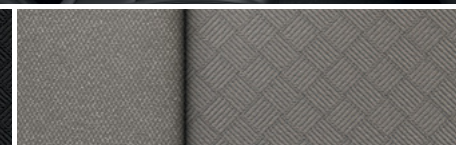
Steering column – electric lock control

Theft-deterrent system – unauthorized entry

Vehicle starter system – remote



Jet Black Cloth



Gideon Cloth³



Jet Black Leather-Appointed Seating Surfaces (shown)



Gideon Leather-Appointed Seating Surfaces³




18" Bright Silver-painted aluminum wheels (PZX)
Standard on RST



20" painted-aluminum wheels with machined face and
Argent Metallic pockets (RD4)
Available on RST



22" high-gloss Black-painted aluminum wheels (SGM)
Included on RST with Rally Edition

¹ To avoid the risk of injury, never use recovery hooks to tow a vehicle. See the Owner's Manual for more information. ² Not compatible with all devices. ³ Not available with Red Hot exterior colour. [†] All-season tires may not satisfy winter tire requirements in all regions of the country. Tires specifically designed for severe winter conditions and marked with the "winter tire" symbol  may be required during certain months or in certain regions. Contact your Provincial, Municipal or local road authority for information regarding which tires are required in your particular area.

MODELS (CONTINUED)



LT TRAIL BOSS In addition to or replacing RST features, LT Trail Boss includes:

MECHANICAL

Air filter – heavy-duty

Differential – heavy-duty, automatic locking rear

Engine – 5.3L EcoTec3 V8 (L84) with auto stop/start feature

Exhaust – dual-outlet with polished tips

Rear axle ratio – 3.23

Suspension Package – Z71 Off-Road Package, Off-Road suspension with 2-in. factory lift and monotube shocks, Hill Descent Control, skid plates and Z71 hard badge

Trailer Package – trailer hitch, 7-pin and 4-pin connectors, and Hitch Guidance¹

Transfer case – Autotrac 2-speed electronic

Transmission – 10-speed automatic with overdrive, Tow/Haul mode and Grade Braking

Transmission oil cooler – auxiliary external

EXTERIOR

Bumpers – high-gloss Black, front and rear

Door handles – high-gloss Black

Grille – Black bowtie emblem, high-gloss Black grille bars and mesh inserts

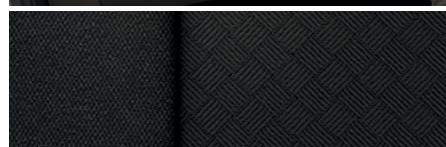
Recovery hooks² – Performance Red

Tires – LT275/65R18 Goodyear Wrangler DuraTrac[®]

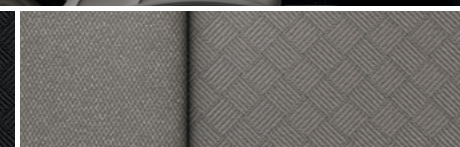
INTERIOR

Floor liners – all-weather, front and rear with Z71 logo

Steering wheel – leather-wrapped



Jet Black Cloth



Gideon Cloth³



Jet Black Leather-Appointed Seating Surfaces



Gideon Leather-Appointed Seating Surfaces (shown)³



18" high-gloss Black-painted aluminum wheels (RD1)
Standard on LT Trail Boss



20" painted-aluminum wheels with machined face
and Grey accent pockets (NZT)
Available on LT Trail Boss



20" Black-painted aluminum wheels (RD5)
Available on LT Trail Boss with Midnight Edition

¹ Read the vehicle Owner's Manual for important feature limitations and information. ² To avoid the risk of injury, never use recovery hooks to tow a vehicle. See the Owner's Manual for more information. ³ Not available with Red Hot exterior colour.

MODELS (CONTINUED)



LTZ In addition to or replacing RST features, LTZ includes:

MECHANICAL

Differential – heavy-duty, automatic locking rear

Engine – 5.3L EcoTec3 V8 (L84) with auto stop/start feature

Rear axle ratio – 3.23

Trailer Package – trailer hitch, 7-pin and 4-pin connectors, Hitch Guidance with Hitch View¹, Trailer Tire Pressure Monitoring System, Advanced Trailering System and integrated trailer brake controller

Transmission oil cooler – auxiliary external

EXTERIOR

Bumpers – chrome, front and rear

Door handles – chrome

Grille – Gold bowtie emblem, chrome grille bars with high-gloss Black mesh and chrome inserts

Mirror caps – chrome

Mirrors – power remote control, heated, power-folding with memory, puddle lamps, side perimeter lighting and driver-side auto-dimming features

Power outlet – 120-volt AC (400 watts shared with instrument panel 120-volt AC outlet), bed-mounted

Recovery hooks² – Black (4x4 models)

Wheelhouse liners – rear

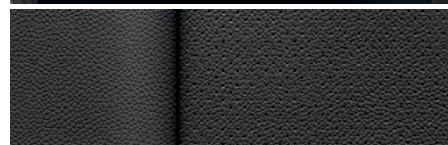
INTERIOR

Air conditioning – dual-zone automatic climate controls with individual climate settings for driver and front passenger

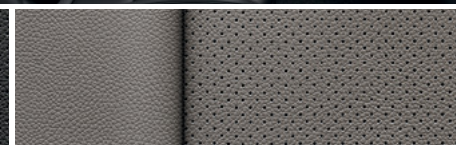
Entertainment – Chevrolet Infotainment 3 Plus system³ with 8-in. diagonal HD colour touch-screen, AM/FM stereo, HD Radio,⁴ Bluetooth[®] audio streaming⁴ for two active devices, voice command pass-through to compatible phone, Apple CarPlay^{®5} and Android Auto^{™6} compatibility, voice recognition and in-vehicle apps⁷

Media – two USB ports⁸ (four total) and SD card reader on instrument panel; second-row, two charge-only USB ports⁸

Memory – driver seat and exterior mirror settings



Jet Black Perforated Leather-Appointed Seating Surfaces (shown)



Gideon Perforated Leather-Appointed Seating Surfaces



18" Bright Silver-Painted Aluminum Wheels (PZX)
Standard on LTZ



20" Polished-Finish Aluminum Wheels (RD2)
Available on LTZ

INTERIOR (CONTINUED)

Mirror – rear-view, auto-dimming

Power outlet – 120-volt AC (up to 400 watts shared with cargo bed 120-volt AC outlet), on instrument panel

Rear Vision Camera¹ – HD

Seats – heated, power 10-way driver and front outboard passenger-seat adjusters with power lumbar control

Seat – rear 60/40 folding bench with seatback storage, under-seat storage and centre fold-out armrest (Crew Cab)

SiriusXM[®] with 360L⁹ – All Access Package with trial subscription

Steering column – manual tilt and telescoping

Steering wheel – heated, leather-wrapped

Windows – power driver and front passenger express-up/-down, rear express-down

¹ Read the vehicle Owner's Manual for important feature limitations and information. ² To avoid the risk of injury, never use recovery hooks to tow a vehicle. See the Owner's Manual for more information. ³ Chevrolet Infotainment System functionality varies by model. Full functionality requires compatible Bluetooth and smartphone, and USB connectivity for some devices. Data plan rates may apply. ⁴ Visit my.gm.ca/Chevrolet/en/learnAbout/bluetooth for more information. Full Bluetooth feature functionality varies by device, model and/or vehicle configuration, and software version. ⁵ Vehicle user interface is a product of Apple and its terms and privacy statements apply. Requires compatible iPhone and data plan rates apply. ⁶ Vehicle user interface is a product of Google and its terms and privacy statements apply. Requires the Android Auto app on Google Play and an Android compatible smartphone running Android 5.0 or higher. Data plan rates apply. ⁷ Available on select Silverado models with compatible hardware. App functionality and features vary with vehicle equipment and trim level. Data connection may be required. Some features require active service plan and working electrical system. Terms and limitations apply. ⁸ Not compatible with all devices. ⁹ Available in 10 Canadian provinces, 3 territories and the 48 contiguous United States. Subscription sold separately after trial period. If you decide to continue your service at the end of your trial subscription, the plan you choose will automatically renew and bill at then-current rates until you call 1-888-539-7474 to cancel. Other fees and taxes will apply. All fees and programming subject to change. See the Customer Agreement for complete terms at siriusxm.ca/terms.

MODELS (CONTINUED)



HIGH COUNTRY In addition to or replacing LTZ features, High Country includes:

MECHANICAL

Exhaust – dual-outlet with polished tips

Transfer case – Autotrac 2-speed electronic

Transmission – 10-speed automatic with overdrive, Tow/Haul mode and Grade Braking

EXTERIOR

Assist steps – chrome, wheel-to-wheel

Bedliner – Black Chevytec spray-on bedliner with High Country logo

Bumpers – body-colour, front and rear

Grille – Gold bowtie emblem, chrome grille bars with high-gloss Black mesh and chrome/bronze inserts

Headlamps – high-intensity discharge LED reflector headlamps with LED daytime running lamps

Mirror caps – body-colour

Recovery hooks¹ – chrome

Tailgate – power up/down with power lock and release

Tires – P275/60R20 all-terrain

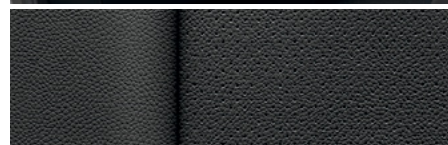
INTERIOR

Audio – 7-speaker Bose premium system with Richbass subwoofer

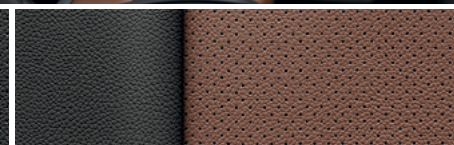
Console – floor-mounted console with cupholders, cellphone storage, power cord management, hanging file folder capability, two USB ports², SD card reader and auxiliary input jack

Driver Information Centre – enhanced 8-in. diagonal multi-colour configurable display, includes analogue speedometer and tachometer

Entertainment – Chevrolet Infotainment 3 Premium system³ with Navigation⁴, includes 8-in. diagonal HD colour touch-screen, Connected Navigation⁵, AM/FM stereo, Bluetooth[®] audio streaming⁶ for two active devices, Apple CarPlay^{®7} and Android Auto^{™8} compatibility, enhanced voice recognition and additional memory for in-vehicle apps⁹



Jet Black Perforated Leather-Appointed Seating Surfaces



Jet Black/Umbre Perforated Leather-Appointed Seating Surfaces (shown)¹¹



20" painted-aluminum wheels with machined face and Light Argent pockets (NZJ)
Standard on High Country



22" polished-aluminum wheels (RVA)
Available on High Country

INTERIOR (CONTINUED)

Floor mats – front and rear, carpeted

Front and Rear Park Assist¹⁰

Lane Change Alert with Side Blind Zone Alert¹⁰

Rear Cross Traffic Alert¹⁰

Seats – ventilated and heated front bucket seats, heated rear outboard seating positions

Window – power, rear sliding with defogger

¹ To avoid the risk of injury, never use recovery hooks to tow a vehicle. See the Owner's Manual for more information. ² Not compatible with all devices. ³ Chevrolet Infotainment System functionality varies by model. Full functionality requires compatible Bluetooth and smartphone, and USB connectivity for some devices. Data plan rates may apply. ⁴ Detailed map coverage is available for most major urban areas of the United States and for certain metropolitan areas of Canada (Vancouver, Calgary, Edmonton, Winnipeg, Windsor, London, Toronto, Ottawa, Montreal, Quebec City and Halifax). Coverage is significantly limited outside these areas. ⁵ Requires subscription to OnStar Guidance Plan, Premium Access Plan or Navigation Add-On. Connected Navigation and Real-time Points of Interest (POI) only available on properly equipped vehicles. Services are subject to user terms and limitations and vary by model and/or vehicle configuration. Visit onstar.ca for more details. ⁶ Visit my.gm.ca/Chevrolet/en/learnAbout/bluetooth for more information. Full Bluetooth feature functionality varies by device, model and/or vehicle configuration, and software version. ⁷ Vehicle user interface is a product of Apple and its terms and privacy statements apply. Requires compatible iPhone and data plan rates apply. ⁸ Vehicle user interface is a product of Google and its terms and privacy statements apply. Requires the Android Auto app on Google Play and an Android compatible smartphone running Android 5.0 or higher. Data plan rates apply. ⁹ Available on select Silverado models with compatible hardware. App functionality and features vary with vehicle equipment and trim level. Data connection may be required. Some features require active service plan and working electrical system. Terms and limitations apply. ¹⁰ Read the vehicle Owner's Manual for important feature limitations and information. ¹¹ Not available with Northsky Blue Metallic or Cajun Red Tintcoat exterior colours.

ENGINES



ECOTEC3 4.3L V6 (LV3)

Standard on WT, Custom and Custom Trail Boss.

EcoTec3 technology includes Active Fuel Management (AFM), Direct Injection and Variable Valve Timing

6-speed automatic transmission

285 hp @ 5300 rpm

305 lb.-ft. of torque @ 3900 rpm

Displacement, cc (cu. in.) – 4301 (262)

Bore & stroke, mm (in.) – 99.6 x 92 (3.92 x 3.62)

Compression ratio – 11.0:1

Ignition – coil-near-plug

Recommended fuel – regular unleaded

Estimated fuel consumption ratings L/100 km (mpg) City/Highway:¹

2WD – 15.1/11.5 (19/25)

4x4 – 15.7/12.0 (18/24)

Custom Trail Boss 4x4 – 16.3/12.9 (17/22)

Maximum payload², lb. (kg) – 2250 (1021)³

Maximum towing⁴, lb. (kg) – 7900 (3583)⁵



ECOTEC3 5.3L V8 (L82)

Available on WT, Custom and Custom Trail Boss.

EcoTec3 technology includes Active Fuel Management (AFM), Direct Injection and Variable Valve Timing

6-speed automatic transmission

355 hp @ 5600 rpm

383 lb.-ft. of torque @ 4100 rpm

Displacement, cc (cu. in.) – 5328 (325)

Bore & stroke, mm (in.) – 96 x 92 (3.78 x 3.62)

Compression ratio – 11.0:1

Ignition – coil-near-plug

Recommended fuel – regular unleaded

Estimated fuel consumption ratings L/100 km (mpg) City/Highway:^{1,5}

2WD – 15.9/11.4 (18/25)

4x4 – 15.9/11.8 (18/24)

Custom Trail Boss 4x4 – 16.7/13.1 (17/22)

Maximum payload², lb. (kg) – 2180 (989)³

Maximum towing⁴, lb. (kg) – 11,000 (4990)⁶



2.7L TURBO (L3B)

Standard on LT and RST. Available on WT and Custom.

Engine technology includes dual-volute turbocharger, Active Thermal Management, Active Fuel Management (AFM), Direct Injection and Variable Valve Timing

8-speed automatic transmission

310 hp @ 5600 rpm

348 lb.-ft. of torque @ 1500 rpm

Displacement, cc (cu. in.) – 2726 (166)

Bore & stroke, mm (in.) – 92.25 x 102 (3.63 x 4.02)

Compression ratio – 11.5:1

Ignition – coil-near-plug

Recommended fuel – regular unleaded

Estimated fuel consumption ratings L/100 km (mpg) City/Highway:¹

2WD – 11.9/10.3 (24/27)

WT 2WD – 12.5/10.8 (23/26)

4x4 – 12.5/10.8 (23/26)

WT 4x4 – 12.7/11.0 (22/26)

Maximum payload², lb. (kg) – 2070 (939)⁷

Maximum towing⁴, lb. (kg) – 6800 (3084)⁸

¹ Fuel consumption estimates based on GM testing in accordance with Government of Canada approved test methods. Refer to vehicles.nrcan.gc.ca for details. Your actual fuel consumption will vary. ² These maximum payload ratings are intended for comparison purposes only. Before you buy a vehicle or use it to haul people or cargo, carefully review the Vehicle Loading section of the Owner's Manual and check the carrying capacity of your specific vehicle on the label on the inside of the driver door jamb. ³ Requires Silverado 1500 Regular Cab Long Bed 2WD. ⁴ Before you buy a vehicle or use it for trailering, carefully review the Trailering section of the Owner's Manual. The weight of passengers, cargo and options or accessories may reduce the amount you can tow. ⁵ Fuel consumption estimates for non-FlexFuel 5.3L V8 engine. ⁶ Requires Silverado 1500 Crew Cab Short Bed Custom 4x4 with available Max Trailering Package. ⁷ Requires Silverado 1500 Double Cab Standard Bed 2WD. ⁸ Requires Silverado 1500 Double Cab Standard Bed 2WD, Crew Cab Short Bed 2WD or Crew Cab Standard Bed 2WD.

ENGINES (CONTINUED)



ECOTEC3 5.3L V8 (L84)

Standard on LT Trail Boss, LTZ and High Country. Available on LT and RST.

EcoTec3 technology includes Dynamic Fuel Management (DFM), Direct Injection and Variable Valve Timing

8-speed automatic transmission (LT, RST and LTZ)

10-speed automatic transmission (LT Trail Boss and High Country)

355 hp @ 5600 rpm

383 lb.-ft. of torque @ 4100 rpm

Displacement, cc (cu. in.) – 5328 (325)

Bore & stroke, mm (in.) – 96 x 92 (3.78 x 3.62)

Compression ratio – 11.0:1

Ignition – coil-near-plug

Recommended fuel – regular unleaded

Estimated fuel consumption ratings L/100 km (mpg) City/Highway:¹

2WD – 13.9/10.1 (20/28)

4x4 with 8-speed – 14.7/10.7 (19/26)

High Country 4x4 with 10-speed – 14.3/10.6 (20/27)

LT Trail Boss 4x4 with 10-speed – 14.7/11.2 (19/25)

Maximum payload²; lb. (kg) – 2190 (993)³

Maximum towing⁴; lb. (kg) – 11,600 (5262)³



ECOTEC3 6.2L V8 (L87)

Available on Custom Trail Boss, RST, LT Trail Boss, LTZ and High Country.

EcoTec3 technology includes Dynamic Fuel Management (DFM), Direct Injection and Variable Valve Timing

10-speed automatic transmission

420 hp @ 5600 rpm

460 lb.-ft. of torque @ 4100 rpm

Displacement, cc (cu. in.) – 6162 (376)

Bore & stroke, mm (in.) – 103.25 x 92 (4.06 x 3.62)

Compression ratio – 11.0:1

Ignition – coil-near-plug

Recommended fuel – premium unleaded

Estimated fuel consumption ratings L/100 km (mpg) City/Highway:¹

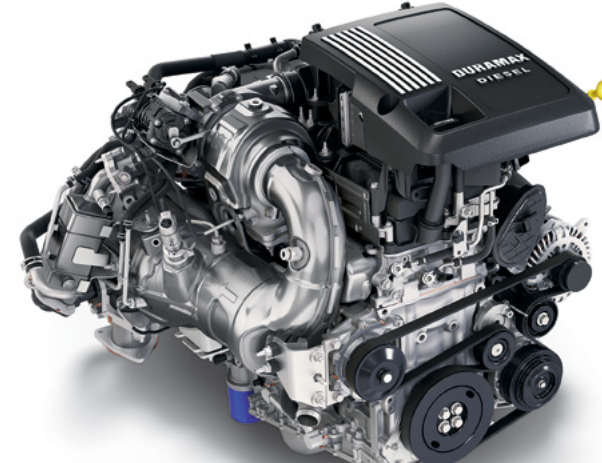
4x4 – 15.0/12.0 (19/24)

LT Trail Boss 4x4 – 15.7/12.4 (18/23)

Custom Trail Boss 4x4 – 16.8/13.3 (17/21)

Maximum payload²; lb. (kg) – 2090 (948)⁵

Maximum towing⁴; lb. (kg) – 13,400 (6078)⁶



DURAMAX 3.0L TURBO-DIESEL I-6 (LM2)

Available on LT, RST, LTZ and High Country (not available on Crew Cab Standard Bed 2WD models).

Engine technology includes variable-geometry turbocharger, Active Thermal Management and high-pressure Direct Injection

10-speed automatic transmission

277 hp @ 3750 rpm

460 lb.-ft. of torque @ 1500 rpm

Displacement, cc (cu. in.) – 2992 (183)

Bore & stroke, mm (in.) – 84 x 90 (3.30 x 3.54)

Compression ratio – 15.0:1

Estimated fuel consumption ratings L/100 km (mpg) City/Highway:¹

2WD – 10.2/7.2 (28/39)

4x4 – 10.4/8.0 (27/35)

Maximum payload²; lb. (kg) – 1870 (848)⁷

Maximum towing⁴; lb. (kg) – 9300 (4218)⁸

¹ Fuel consumption estimates based on GM testing in accordance with Government of Canada approved test methods. Refer to vehicles.nrcan.gc.ca for details. Your actual fuel consumption will vary. ² These maximum payload ratings are intended for comparison purposes only. Before you buy a vehicle or use it to haul people or cargo, carefully review the Vehicle Loading section of the Owner's Manual and check the carrying capacity of your specific vehicle on the label on the inside of the driver door jamb. ³ Requires Silverado 1500 Double Cab Standard Bed 2WD with available Max Trailering Package. ⁴ Before you buy a vehicle or use it for trailering, carefully review the Trailering section of the Owner's Manual. The weight of passengers, cargo and options or accessories may reduce the amount you can tow. ⁵ Requires Silverado 1500 Double Cab Standard Bed RST 4x4 with available Max Trailering Package and 20" wheels or Double Cab Standard Bed 4x4 with available Max Trailering Package. ⁶ Requires Silverado 1500 Double Cab Standard Bed RST 4x4 with available Max Trailering Package and 20" wheels. ⁷ Requires Silverado 1500 Crew Cab Short Bed 2WD or 4x4. ⁸ Requires Silverado 1500 Double Cab Standard Bed 4x4 or Crew Cab Short Bed 4x4.

AVAILABLE FEATURES

● STANDARD ○ AVAILABLE – NOT AVAILABLE
TB = TRAIL BOSS HC = HIGH COUNTRY

	WT	CUSTOM	CUSTOM TB	LT	RST	LT TB	LTZ	HC
SAFETY & SECURITY								
Automatic Emergency Braking ¹	–	–	–	–	–	–	○ ²	○ ²
Following Distance Indicator ¹	–	–	–	–	–	–	○ ²	○ ²
Forward Collision Alert ¹	–	–	–	–	–	–	○ ²	○ ²
Front and Rear Park Assist ¹ ; ultrasonic	○ ³	–	–	○ ⁴	○ ⁴	○ ⁴	○ ⁴	●
Front Pedestrian Braking ¹	–	–	–	–	–	–	○ ²	○ ²
Lane Change Alert with Side Blind Zone Alert ¹	○ ³	–	–	○ ⁴	○ ⁴	○ ⁴	○ ⁴	●
Lane Keep Assist with Lane Departure Warning ¹	–	–	–	–	–	–	○ ²	○ ²
OnStar Safety & Security Plan coverage ⁵ for 1 month from the trial activation date, which includes Automatic Crash Response, Stolen Vehicle Assistance, Roadside Assistance and Turn-by-Turn Navigation	○ ⁶	○ ⁶	○ ⁶	●	●	●	●	●
Rear Cross Traffic Alert ¹	○ ³	–	–	○ ⁴	○ ⁴	○ ⁴	○ ⁴	●
Rear Vision Camera ¹	●	●	●	●	●	●	–	–
Rear Vision Camera ¹ – HD	–	–	–	○ ⁷	○ ⁷	○ ⁷	●	–
Surround Vision ¹ – HD	–	–	–	–	–	–	○ ⁸	○ ⁸
Safety Alert Seat for driver ¹	–	–	–	–	–	–	○ ²	○ ²
Theft-deterrent system – unauthorized entry	–	○ ⁹	○ ⁹	○ ¹⁰	●	●	●	●
MECHANICAL								
Cooling – external engine oil cooler	●	●	●	○ ¹¹	○ ¹¹	●	●	●
– auxiliary external transmission oil cooler	○ ¹¹	○ ¹¹	○ ¹¹	○ ¹¹	○ ¹¹	●	●	●
Differential – automatic heavy-duty locking, rear	○	○	●	○	○	●	●	●
EcoTec3 4.3L V6 engine with AFM and 6-speed auto trans.; 285 hp @ 5300 rpm, 305 lb.-ft. of torque @ 3900 rpm	●	●	●	–	–	–	–	–
2.7L Turbo engine with AFM and 8-speed auto trans.; 310 hp @ 5600 rpm, 348 lb.-ft. of torque @ 1500 rpm	○ ¹²	○ ¹³	–	●	●	–	–	–
EcoTec3 5.3L V8 engine (L82) with AFM and 6-speed auto trans.; 355 hp @ 5600 rpm, 383 lb.-ft. of torque @ 4100 rpm	○	○	○	–	–	–	–	–
EcoTec3 5.3L V8 engine (L84) with DFM and 8-speed auto trans.; 355 hp @ 5600 rpm, 383 lb.-ft. of torque @ 4100 rpm	–	–	–	○	○	–	●	–
EcoTec3 5.3L V8 engine (L84) with DFM and 10-speed auto trans.; 355 hp @ 5600 rpm, 383 lb.-ft. of torque @ 4100 rpm	–	–	–	–	–	●	–	●

	WT	CUSTOM	CUSTOM TB	LT	RST	LT TB	LTZ	HC
MECHANICAL (CONTINUED)								
EcoTec3 6.2L V8 engine with DFM and 10-speed auto trans.; 420 hp @ 5600 rpm, 460 lb.-ft. of torque @ 4100 rpm; LTZ includes dual-outlet exhaust with polished tips	–	–	○ ¹⁴	–	○	○	○ ¹⁵	○
Duramax 3.0L I-6 and 10-speed auto trans.; 277 hp @ 3750 rpm, 460 lb.-ft. of torque @ 1500 rpm; includes engine block heater	–	–	–	○ ¹⁶	○ ¹⁷	–	○	○
Auto stop/start feature	○ ¹⁸	○ ¹⁸	○ ¹⁹	●	●	●	●	●
Engine block heater	○	○	○	○	○	○	○	○
Exhaust – dual-outlet with polished tips	–	○ ¹¹	○ ¹¹	○ ²⁰	○ ^{19, 20}	●	○ ^{19, 20}	●
Hitch Guidance ¹	○ ²¹	○ ²¹	●	○ ²¹	○ ²¹	●	●	●
Skid plates (4x4 models)	○ ²²	–	●	○ ²³	○ ²⁰	●	○ ²³	○ ²⁰
Trailer brake controller – integrated	○ ²⁴	○ ²¹	○	○ ²¹	○ ²¹	○	●	●
Transfer case – single-speed, electronic Autotrac (4x4 models)	○	●	–	○	○	–	○	–
– 2-speed, electronic Autotrac (4x4 models)	○ ²⁵	–	●	○ ²⁰	○ ²⁰	●	○ ²⁶	●
EXTERIOR								
Assist steps – chrome, wheel-to-wheel (Crew Cab)	–	○ ²⁷	–	○	○	–	○	●
– power-retractable running boards with rearward articulating, foot-activated to provide bed access (Crew Cab)	–	–	–	–	–	–	○ ⁴	○
Bedliner – Chevytec spray-on, Black with Chevrolet logo (bed only; tailgate has Black composite inner panel)	○	○	○	○ ²⁸	○ ²⁸	○ ²⁸	○	●
Cargo area lighting – LED, in pickup bed, key fob-activated	○	○ ⁹	○ ⁹	○ ²⁸	●	●	●	●
Lighting – IntelliBeam automatic high beam on/off	–	–	–	–	–	–	○ ²	○ ²
Mirrors – vertical trawling, heated upper glass, power-adjustable, manual-folding and manual-extending with lower convex mirrors and integrated turn signal indicators; includes interior auto-dimming mirror	○ ³⁰	–	–	○ ²¹	○ ²¹	○	–	–
– vertical trawling, heated and auto-dimming upper glass (driver and passenger), power-adjustable, power-folding and manual-extending with lower convex mirrors, integrated turn signal indicators, puddle lamps, perimeter and auxiliary lighting; includes chrome mirror caps	–	–	–	–	–	–	○ ⁸	○ ⁸
Tailgate – EZ-Lift, power lock and release	○ ³¹	○ ⁹	○ ⁹	○ ²⁹	●	●	●	○
– power up/down function, power lock and release	–	–	–	–	–	–	○ ³²	●

¹ Read the vehicle Owner's Manual for important feature limitations and information. ² Requires available Safety Package II. ³ Requires available WT Safety Package. ⁴ Requires available Safety Package. ⁵ Properly equipped Chevrolet vehicles are eligible for 1 month of Connected Services trial and OnStar Safety & Security Plan coverage, starting at trial activation date; includes emergency and navigation services, Connected Navigation, the Remote Access Plan, plus a 3 GB or 1-month (whichever comes first) data plan trial. Services subject to user terms and limitations; capabilities vary by model and/or vehicle configuration; visit onstar.ca for details. Data plans offered by AT&T or its local service provider. Availability subject to change. GM Canada may modify, extend or terminate offers for any reason, in whole or in part, at any time, without notice. Requires vehicle electrical system (including battery), wireless service and GPS satellite signal to be available and operating for features to function properly. ⁶ Factory-installed equipment purchase required. Requires available Infotainment Package on Custom and Custom Trail Boss. ⁷ Requires available Convenience Package II. ⁸ Requires available Technology Package. ⁹ Requires available Custom Convenience Package. ¹⁰ Requires available LT Convenience Package or Remote Start Package. ¹¹ Requires available V8 engine. ¹² Requires Double Cab or Crew Cab, WT Value Package or WT Convenience Package, split-bench front seat with armrest storage, single-zone semi-automatic air conditioning, OnStar Safety & Security Plan coverage and 120-volt AC power outlets. ¹³ Requires available Custom Convenience Package, Infotainment Package, split-bench front seat with armrest storage, single-zone semi-automatic air conditioning and 120-volt AC power outlets. ¹⁴ Requires available Infotainment Package. ¹⁵ Requires 2-speed Autotrac 4x4 model. ¹⁶ Requires available LT Convenience Package, heavy-duty automatic locking rear differential and Trailing Package. ¹⁷ Requires available RST Convenience Package or Convenience Package with Bucket Seats, heavy-duty automatic locking rear differential and Trailing Package (Z82). ¹⁸ Requires available 2.7L Turbo engine. ¹⁹ Requires available 6.2L V8 engine. ²⁰ Requires available Z71 Off-Road Package. ²¹ Requires available Trailing Package (Z82). ²² Requires available Work Truck Package, Z71 Off-Road Package or Snow Plow Prep Package. ²³ Requires available Z71 Off-Road Package or Snow Plow Prep Package. ²⁴ Regular Cab requires available WT Convenience Package or WT Value Package. All models require available Trailing Package (Z82). ²⁵ Double Cab and Crew Cab require available Z71 Off-Road Package. ²⁶ Requires available Z71 Off-Road Package or 6.2L V8 engine. ²⁷ Requires available Custom Max Trailing Package. ²⁸ Requires available Bed Protection Package. ²⁹ Requires available LT Convenience Package. ³⁰ Requires available WT Convenience Package and Trailing Package (Z82). ³¹ Requires available WT Convenience Package. ³² Requires available LTZ Convenience Package, LTZ Plus Package or LTZ Premium Package.

AVAILABLE FEATURES (CONTINUED)

● STANDARD ○ AVAILABLE – NOT AVAILABLE

TB = TRAIL BOSS HC = HIGH COUNTRY

	WT	CUSTOM	CUSTOM TB	LT	RST	LT TB	LTZ	HC
EXTERIOR (CONTINUED)								
Tires – P255/70R17 all-season ¹	●	–	–	●	–	–	–	–
– P265/70R17 all-terrain	○	–	–	○	–	–	–	–
– LT265/70R17 all-terrain	○	–	–	○	–	–	–	–
– P265/65R18 all-season ¹	–	–	–	○	●	–	●	–
– P265/65R18 all-terrain	–	–	–	○	○	–	○	–
– P265/65R18 all-terrain, white-outlined letter	–	–	–	○	○	–	–	–
– LT275/65R18 Goodyear Wrangler DuraTrac®	–	–	●	–	–	●	–	–
– P275/60R20 all-season ¹	–	●	–	○	○	–	○	–
– P275/60R20 all-terrain	–	○	○	○	○	○	○	●
– P275/50R22 all-season ¹	–	–	–	○ ¹	–	–	–	○ ²
Wheelhouse liners – rear	–	–	–	○ ³	○ ³	○ ³	●	●
INTERIOR								
Air conditioning – single-zone	●	●	●	–	–	–	–	–
– single-zone manual, semi-automatic	○ ⁴	○ ⁴	–	●	●	●	–	–
– dual-zone automatic climate controls	–	–	–	○ ⁵	○ ⁶	○ ⁷	●	●
Cruise control – electronic with set and resume speed	○	●	●	●	●	●	●	●
– Adaptive Cruise Control – Camera ⁸	–	–	–	–	–	–	○ ⁹	○ ⁹
Defogger – rear-window	○	○ ¹⁰	○ ¹⁰	○ ¹¹	●	●	●	●
Instrumentation – Head-Up Display (HUD)	–	–	–	–	–	–	○ ¹²	○ ¹²
Keyless Open and Start	–	–	–	○ ¹³	●	●	●	●
Power outlets – 120-volt AC, instrument panel- and bed-mounted	○ ¹⁴	○ ⁴	–	○ ¹⁵	○ ¹⁵	○ ¹⁵	●	●
Rear Camera Mirror ⁸ – auto-dimming	–	–	–	–	–	–	○ ¹²	○ ¹²
Sunroof – power (Crew Cab)	–	–	–	○ ¹⁵	○ ¹⁵	○ ¹⁵	○ ¹⁶	○
Universal Home Remote – 3-channel programmable transmitter, includes garage door opener	–	–	–	○ ¹⁵	○ ¹⁵	○ ¹⁵	○ ¹⁶	●
Vehicle starter system – remote	–	○ ¹⁰	○ ¹⁰	○ ¹¹	●	●	●	●
Window – power, rear sliding with defogger	–	–	–	○ ¹⁵	○ ¹⁵	○ ¹⁵	○ ¹⁶	●

	WT	CUSTOM	CUSTOM TB	LT	RST	LT TB	LTZ	HC
SEATS								
Front bucket seats – with floor-mounted console with cupholders, cellphone storage, power cord management and hanging file folder capability and auxiliary input jack	–	–	–	–	○ ¹⁷	○ ¹⁷	○ ¹⁸	●
Seat – driver, power 10-way seat adjuster with power lumbar control	○ ⁴	–	–	○ ¹¹	○ ⁶	○ ⁷	●	●
Seats – heated, driver and front outboard passenger	–	–	–	○ ¹¹	○ ⁶	○ ⁷	●	●
– heated, rear outboard passengers (Crew Cab)	–	–	–	–	–	–	○ ¹⁶	●
– ventilated, driver and front outboard passenger	–	–	–	–	–	–	○ ¹⁶	●
Seat – rear 60/40 split-folding bench	●	●	●	●	●	●	● ¹⁹	–
– rear 60/40 split-folding bench with Storage Package includes seatback storage on left and right side, centre fold-down armrest and full-width under-seat storage (Crew Cab)	–	–	–	○ ²⁰	○ ²⁰	○ ²⁰	●	●
INFOTAINMENT								
Chevrolet Infotainment 3 Plus system ²¹	–	–	–	○ ¹⁵	○ ¹⁵	○ ¹⁵	●	–
Includes 8-in. diagonal HD colour touch-screen, AM/FM stereo, Bluetooth® audio streaming ²² for two active devices, voice command pass-through to compatible phone, Apple CarPlay ^{®23} and Android Auto ^{™24} compatibility, HD Radio®, voice recognition and in-vehicle apps ²⁵	–	–	–	–	–	–	○ ²⁷	●
Chevrolet Infotainment 3 Premium system ²¹ with Navigation ²⁶	–	–	–	–	–	–	○ ²⁷	●
Includes 8-in. diagonal HD colour touch-screen with Plus system features listed above, Connected Navigation ²⁸ , enhanced voice recognition ²⁸ and additional memory for in-vehicle apps ²⁵	–	–	–	–	–	–	○ ²⁷	●
Audio – 7-speaker Bose premium system with Richbass subwoofer	–	–	–	–	○ ¹⁵	○ ¹⁵	○ ²⁷	●
Wireless charging ²⁹	–	–	–	–	–	–	○ ²⁷	●
SiriusXM ^{®30} – All Access Package with trial subscription	–	○ ³¹	○ ³¹	–	–	–	–	–
SiriusXM [®] with 360L ³⁰ – All Access Package with trial subscription	–	–	–	○ ¹⁵	○ ¹⁵	○ ¹⁵	●	●
Built-in 4G LTE Wi-Fi® Hotspot ³² includes 1-month or 3 GB data plan trial (whichever comes first) from trial activation date	○ ^{31,33}	○ ^{31,33}	○ ^{31,33}	●	●	●	●	●
Chevrolet Connected Access ³⁴ includes 10 years of standard connectivity and enables features such as Vehicle Diagnostics ³⁵ and Dealer Maintenance Notification ³⁵	○ ^{31,33}	○ ^{31,33}	○ ^{31,33}	●	●	●	●	●

1 Requires available Rally Edition. **2** Requires available 22" polished-aluminum wheels (RVA). **3** Requires available Bed Protection Package. **4** Requires available 2.7L Turbo engine. **5** Requires available LT Convenience Package. **6** Requires available RST Convenience Package or Convenience Package with Bucket Seats. **7** Requires available LT Trail Boss Convenience Package or Convenience Package with Bucket Seats. **8** Read the vehicle Owner's Manual for important feature limitations and information. **9** Requires available Safety Package II. **10** Requires available Custom Convenience Package. **11** Requires available LT Convenience Package or Remote Start Package. **12** Requires available Technology Package. **13** Requires available LT Convenience Package. **14** Requires available WT Convenience Package. **15** Requires available Convenience Package II. **16** Requires available LTZ Convenience Package. **17** Requires available Convenience Package with Bucket Seats. **18** Requires available LTZ Convenience Package, LTZ Plus Package or LTZ Premium Package. **19** Double Cab models. **20** Requires available Leather Package. **21** Chevrolet Infotainment System functionality varies by model. Full functionality requires compatible Bluetooth and smartphone, and USB connectivity for some devices. Data plan rates may apply. **22** Visit my.gm.ca/Chevrolet/en/learnAbout/bluetooth for more information. Full Bluetooth feature functionality varies by device, model and/or vehicle configuration, and software version. **23** Vehicle user interface is a product of Apple and its terms and privacy statements apply. Requires compatible iPhone and data plan rates apply. **24** Vehicle user interface is a product of Google and its terms and privacy statements apply. Requires the Android Auto app on Google Play and an Android compatible smartphone running Android 5.0 or higher. Data plan rates apply. **25** Available on select Silverado models with compatible hardware. App functionality and features vary with vehicle equipment and trim level. Data connection may be required. Some features require active service plan and working electrical system. Terms and limitations apply. **26** Detailed map coverage is available for most major urban areas of the United States and for certain metropolitan areas of Canada (Vancouver, Calgary, Edmonton, Winnipeg, Windsor, London, Toronto, Ottawa, Montreal, Quebec City and Halifax). Coverage is significantly limited outside these areas. **27** Requires available LTZ Convenience Package II. **28** Requires subscription to OnStar Guidance Plan, Premium Access Plan or Navigation Add-On. Connected Navigation and Real-time Points of Interest (POI) only available on properly equipped vehicles. Services are subject to user terms and limitations and vary by model and/or vehicle configuration. Visit onstar.ca for more details. **29** The system wirelessly charges one compatible mobile device. Some devices require an adapter or back cover. See myChevrolet.ca for more information. **30** Available in 10 Canadian provinces, 3 territories and the 48 contiguous United States. Subscription sold separately after trial period. If you decide to continue your service at the end of your trial subscription, the plan you choose will automatically renew and bill at then-current rates until you call 1-888-539-7474 to cancel. Other fees and taxes will apply. All fees and programming subject to change. See the Customer Agreement for complete terms at siriusxm.ca/terms. **31** Factory-installed equipment purchase required. Requires available Infotainment Package on Custom and Custom Trail Boss. **32** Visit onstar.ca for vehicle availability, coverage maps, details and system limitations. Services and connectivity vary by model and/or vehicle configuration and conditions as well as geographical and technical restrictions. 4G LTE service available in select markets. Requires active connected vehicle services and a data plan to access the vehicle's built-in Wi-Fi Hotspot. Accessory Power must be active to use the Wi-Fi Hotspot. Data plans provided by AT&T or its local service provider. Credit card is required for purchase. **33** Requires available OnStar Safety & Security Plan coverage. **34** Limitations apply. Not transferable. Standard connectivity available to original purchaser for 10 years from the trial activation date for properly equipped vehicles. Visit onstar.ca for details and further plan limitations. Connected Access does not include emergency or security services. Availability of Connected Access and any of its services is dependent on compatible 4G LTE wireless networks and is also subject to change. **35** Capabilities vary by model and/or vehicle configuration and service plan. Visit onstar.ca for vehicle availability. Message and data rates may apply. Requires active service, email address on file and enrollment in Vehicle Diagnostics. Not all issues will deliver alerts. On-Demand Diagnostics requires a paid service plan. † All-season tires may not satisfy winter tire requirements in all regions of the country. Tires specifically designed for severe winter conditions and marked with the "winter tire" symbol  may be required during certain months or in certain regions. Contact your Provincial, Municipal or local road authority for information regarding which tires are required in your particular area.


AVAILABLE PACKAGES AND SPECIAL EDITIONS

● STANDARD ○ AVAILABLE – NOT AVAILABLE

TB = TRAIL BOSS HC = HIGH COUNTRY

	WT	CUSTOM	CUSTOM TB	LT	RST	LT TB	LTZ	HC
SAFETY & SECURITY								
WT Safety Package	○	–	–	–	–	–	–	–
Includes Front and Rear Park Assist ¹ ; Lane Change Alert with Side Blind Zone Alert ¹ ; Rear Cross Traffic Alert ¹ ; perimeter lighting, chrome front and rear bumpers and high-gloss Black mirror caps; 2WD models include front recovery hooks ² (requires available WT Convenience Package or WT Value Package and 120-volt AC bed- and instrument panel-mounted power outlets)								
Safety Package	–	–	–	○	○	○	○	–
Includes Front and Rear Park Assist ¹ ; Lane Change Alert with Side Blind Zone Alert ¹ ; Rear Cross Traffic Alert ¹ and perimeter lighting; LT and LTZ 2WD models include front recovery hooks ² (LT requires available LT Convenience Package)								
Safety Package II	–	–	–	–	–	–	○	○
Includes Automatic Emergency Braking ¹ ; Following Distance Indicator ¹ ; Forward Collision Alert ¹ ; Front Pedestrian Braking ¹ ; IntelliBeam headlamps, Lane Keep Assist with Lane Departure Warning ¹ ; Safety Alert Seat ¹ for driver and Adaptive Cruise Control – Camera ¹ (LTZ requires available Safety Package)								
MECHANICAL								
Work Truck Package	○	–	–	–	–	–	–	–
Includes skid plates and heavy-duty air filter (requires available 265/70R17 all-terrain tires)								
Snow Plow Prep Package (4x4 models)	○	–	–	○	–	–	○	–
Includes power feed for backup and roof emergency light, 220-amp alternator, heavy-duty air filter, skid plates and heavy-duty front springs (WT requires available 5.3L V8 engine and 17" painted-steel wheels [RD6]; LT requires available Z71 Off-Road Package and 5.3L V8 engine; LTZ requires 5.3L V8 engine and 18" Bright Silver-painted aluminum wheels [PZX])								
Trailer Package (Z82)	○	○	●	○	○	●	●	●
Includes trailer hitch, 7-pin and 4-pin connectors, and Hitch Guidance								
Advanced Trailering Package	–	–	–	○	○	○	●	●
Includes Hitch Guidance with Hitch View ¹ ; integrated trailer brake controller, Advanced Trailering System with Trailering App ³ and Trailer Tire Pressure Monitoring System module (LT and RST require available Convenience Package II and either Trailering Package [Z82] or Max Trailering Package [NHT]; LT Trail Boss requires available Convenience Package II)								
Trailer Camera¹ Package	–	–	–	○	○	○	○	○
Includes Bed View Camera, Trailering App ³ and two trailer view camera provisions (LT, RST and LT Trail Boss require available Convenience Package II, Safety Package and Advanced Trailering Package; LTZ requires available Safety Package)								
Max Trailering Package (NHT)	–	–	–	○	○	–	○	○
Includes 9.76 rear axle, 3.42 axle ratio, enhanced radiator cooling, revised shock tuning for increased control, heavier-duty rear springs, increased RGAWR ⁴ and 220-amp alternator; LT and RST include integrated trailer brake controller (LT and RST require available 5.3L V8 engine, Trailering Package [Z82], and heavy-duty automatic locking rear differential; LTZ requires 5.3L V8 engine or available 6.2L V8 engine; High Country requires available 6.2L V8 engine)								

	WT	CUSTOM	CUSTOM TB	LT	RST	LT TB	LTZ	HC
MECHANICAL (CONTINUED)								
Custom Max Trailering Package (Crew Cab Short Bed 4x4)	–	○	–	–	–	–	–	–
Includes Trailering Package (Z82), Max Trailering Package (NHT), trailering mirrors, dual-outlet exhaust with polished tips, chrome wheel-to-wheel assist steps, Chevytec spray-on bedliner, 3.73 axle ratio, Cloth Rear Seat with Storage Package, all-weather floor liners, tiered storage, rear wheelhouse liners, rubber bed mat, tri-fold hard tonneau cover and cargo tie-down rings (requires available Custom Convenience Package, 5.3L V8 engine and automatic locking rear differential)								
Z71 Off-Road Package (4x4 models)	○	–	●	○	○	●	○	○
Includes Off-Road suspension, Hill Descent Control, skid plates, heavy-duty air filter and Z71 badge; WT includes heavy-duty automatic locking rear differential and 2-speed transfer case; Custom Trail Boss and LT Trail Boss include 2" factory lifted suspension and Goodyear Wrangler DuraTrac [®] tires; LT and RST include heavy-duty automatic locking rear differential, dual-outlet exhaust with polished tips, 18" Bright Silver-painted aluminum wheels (PZX), P265/65R18 all-terrain tires and 2-speed transfer case; LTZ includes P265/65R18 all-terrain tires, 2-speed transfer case and dual-outlet exhaust with polished tips; High Country does not include Z71 badge (WT requires Double Cab or Crew Cab and available Trailering Package [Z82] and all-terrain tires; LT and RST require available Trailering Package [Z82])								
EXTERIOR								
Bed Protection Package	–	–	–	○	○	○	–	–
Includes rear wheelhouse liners and Chevytec spray-on bedliner								
Rally Edition	–	○	–	–	○	–	–	–
Includes Black badges, Black rally stripes, 4" Black round assist steps and Black exhaust tip(s); Custom includes Black bowtie emblem on grille and steering wheel, Chevytec spray-on bedliner and 20" Black-painted aluminum wheels (RD5); RST includes Bed Protection Package, 22" high-gloss Black-painted aluminum wheels (SGM) and P275/50R22 all-season ¹ tires (available with Red Hot, Silver Ice Metallic, Summit White or Black exterior colours)								
Midnight Edition	–	–	○	–	–	○	–	–
Includes Black badges, dual-outlet exhaust with Black tips, 4" Black round assist steps and Black exterior colour; Custom Trail Boss includes Custom Convenience Package, Infotainment Package, Chevytec spray-on bedliner, all-weather floor liners with Z71 logo and Silver-hammer interior trim kit; LT Trail Boss includes high-intensity discharge LED headlamps, Bed Protection Package and Convenience Package with Bucket Seats (LT Trail Boss requires Crew Cab Short Bed, Black exterior colour and Jet Black interior, and available Convenience Package II, Leather Package, Advanced Trailering Package and 6.2L V8 engine)								
Z71 Off-Road and Protection Package (4x4 models)	–	–	–	○	○	–	○	–
Includes Z71 Off-Road Package, Chevytec spray-on bedliner and all-weather floor liners with Z71 logo; LT and RST include rear wheelhouse liners; LTZ includes 20" polished-aluminum wheels (RD2) and P275/60R20 all-terrain tires (LT and RST require available Trailering Package [Z82], all-terrain tires and 5.3L V8 engine or Duramax 3.0L I-6 engine)								

¹ Read the vehicle Owner's Manual for important feature limitations and information. ² To avoid the risk of injury, never use recovery hooks to tow a vehicle. See the Owner's Manual for more information. ³ Available on select Silverado models with compatible hardware. App functionality and features vary with vehicle equipment and trim level. Data connection may be required. Some features require active service plan and working electrical system. Terms and limitations apply. ⁴ Rear Gross Axle Weight Rating. † All-season tires may not satisfy winter tire requirements in all regions of the country. Tires specifically designed for severe winter conditions and marked with the "winter tire" symbol  may be required during certain months or in certain regions. Contact your Provincial, Municipal or local road authority for information regarding which tires are required in your particular area.

AVAILABLE PACKAGES AND SPECIAL EDITIONS (CONTINUED)

● STANDARD ○ AVAILABLE – NOT AVAILABLE
TB = TRAIL BOSS HC = HIGH COUNTRY

	WT	CUSTOM	CUSTOM TB	LT	RST	LT TB	LTZ	HC
INTERIOR (CONTINUED)								
WT Convenience Package	○	–	–	–	–	–	–	–
Includes Remote Keyless Entry, EZ-Lift power lock and release tailgate, deep-tinted windows behind front doors, rear-window defogger, cruise control, and exterior heated power remote control mirrors; Regular Cab models also include power door locks and power windows with driver express-up/-down and front passenger express-down								
WT Value Package	○	–	–	–	–	–	–	–
Includes WT Convenience Package and Trailing Package (Z82)								
Custom Convenience Package	–	○	○	–	–	–	–	–
Includes remote vehicle starter system, unauthorized entry theft-deterrent system, rear-window defogger, LED cargo area lighting in pickup bed and EZ-Lift power lock and release tailgate								
Infotainment Package	–	○	○	–	–	–	–	–
Includes SiriusXM® All Access Package with trial subscription and OnStar Safety & Security Plan coverage ² for 1 month								
Custom Value Package	–	○	–	–	–	–	–	–
Includes Custom Convenience Package, Infotainment Package and Trailing Package (Z82)								
LT Convenience Package	–	–	–	○	–	–	–	–
Includes dual-zone automatic climate controls, power 10-way driver-seat adjuster with power lumbar control, heated driver and front outboard passenger seats, leather-wrapped heated steering wheel, manual tilt and telescoping steering column with electric lock control, charge-only USB ports ³ in second row, rear-window defogger, rear-seat 12-volt auxiliary power outlet, Keyless Open and Start, remote vehicle starter system, unauthorized entry theft-deterrent system, front 40/20/40 split-bench seat with under-seat storage, EZ-Lift power lock and release tailgate and LED cargo area lighting in pickup bed								
Remote Start Package	–	–	–	○	–	–	–	–
Includes remote vehicle starter system, unauthorized entry theft-deterrent system and rear-window defogger								
LT True North Edition	–	–	–	○	–	–	–	–
Includes LT Convenience Package, automatic locking rear differential and Trailing Package (Z82)								
LT Value Package	–	–	–	○	–	–	–	–
Includes Remote Start Package, Trailing Package (Z82), 18" Bright Silver-painted aluminum wheels (PZX), P265/65R18 all-terrain tires and all-weather floor liners								
RST True North Edition	–	–	–	–	○	–	–	–
Includes RST Convenience Package, automatic locking rear differential and Trailing Package (Z82)								

	WT	CUSTOM	CUSTOM TB	LT	RST	LT TB	LTZ	HC
INTERIOR (CONTINUED)								
RST Value Package	–	–	–	–	○	–	–	–
Includes Trailing Package (Z82), 20" aluminum wheels with machined face and Argent Metallic pockets (RD4), P275/60R20 all-terrain tires and all-weather floor liners								
Convenience Package II	–	–	–	○	○	○	–	–
Includes universal home remote, power-sliding rear window, 120-volt bed- and instrument panel-mounted power outlets, Chevrolet Infotainment 3 Plus system; ⁴ two USB ports; ³ SD card reader, SiriusXM® with 360L ¹ and All Access Package with 3-month trial subscription, HD Radio® and HD Rear Vision Camera; ⁵ Crew Cab LT includes Cloth Rear Seat with Storage Package; RST and LT Trail Boss include Bose premium 7-speaker audio system (LT requires available LT Convenience Package, Trailing Package [Z82] and integrated trailer brake controller; RST requires available Convenience Package with Bucket Seats, Trailing Package [Z82] and integrated trailer brake controller; LT Trail Boss requires available Convenience Package with Bucket Seats and integrated trailer brake controller)								
RST Convenience Package	–	–	–	–	○	–	–	–
Includes dual-zone automatic climate controls, power 10-way driver-seat adjuster with power lumbar control, heated driver and front outboard passenger seats, leather-wrapped heated steering wheel, and manual tilt and telescoping steering column (Crew Cab models include Cloth Rear Seat with Storage Package)								
LT Trail Boss Convenience Package	–	–	–	–	–	○	–	–
Includes dual-zone automatic climate controls, power 10-way driver-seat adjuster with power lumbar control, heated driver and front outboard passenger seats, heated steering wheel, manual tilt and telescoping steering column and Cloth Rear Seat with Storage Package								
Convenience Package with Bucket Seats	–	–	–	–	○	○	–	–
Includes heated front bucket seats, front centre floor console, dual-zone automatic climate controls, power 10-way driver-seat adjuster with power lumbar control, heated steering wheel, and manual tilt and telescoping steering column; Crew Cab models include Cloth Rear Seat with Storage Package; RST includes leather-wrapped steering wheel								
LTZ Convenience Package	–	–	–	–	–	–	○	–
Includes heated and ventilated front bucket seats, front centre floor console, power-sliding rear window, universal home remote, USB ports; ³ SD card reader and auxiliary input jack in floor console, and power up/down tailgate with power lock and release; Crew Cab models include heated rear outboard seats								
LTZ Convenience Package II	–	–	–	–	–	–	○	–
Includes Chevrolet Infotainment 3 Premium system ⁴ with Navigation; ⁶ Bose premium 7-speaker audio system and wireless charging ⁷ (requires available LTZ Convenience Package)								


¹ Available in 10 Canadian provinces, 3 territories and the 48 contiguous United States. Subscription sold separately after trial period. If you decide to continue your service at the end of your trial subscription, the plan you choose will automatically renew and bill at then-current rates until you call 1-888-539-7474 to cancel. Other fees and taxes will apply. All fees and programming subject to change. See the Customer Agreement for complete terms at siriusxm.ca/terms. ² Properly equipped Chevrolet vehicles are eligible for 1 month of Connected Services trial and OnStar Safety & Security coverage starting at trial activation date; includes emergency and navigation services, Connected Navigation, the Remote Access Plan, plus a 3 GB or 1-month (whichever comes first) data plan trial. Services subject to user terms and limitations; capabilities vary by model and/or vehicle configuration; visit onstar.ca for details. Data plans offered by AT&T or its local service provider. Availability subject to change. GM Canada may modify, extend or terminate offers for any reason, in whole or in part, at any time, without notice. Requires vehicle electrical system (including battery), wireless service and GPS satellite signal to be available and operating for features to function properly. ³ Not compatible with all devices. ⁴ Chevrolet Infotainment System functionality varies by model. Full functionality requires compatible Bluetooth and smartphone, and USB connectivity for some devices. Data plan rates may apply. ⁵ Read the vehicle Owner's Manual for important feature limitations and information. ⁶ Detailed map coverage is available for most major urban areas of the United States and for certain metropolitan areas of Canada (Vancouver, Calgary, Edmonton, Winnipeg, Windsor, London, Toronto, Ottawa, Montreal, Quebec City and Halifax). Coverage is significantly limited outside these areas. ⁷ The system wirelessly charges one compatible mobile device. Some devices require an adapter or back cover. See myChevrolet.ca for more information.

AVAILABLE PACKAGES AND SPECIAL EDITIONS (CONTINUED)

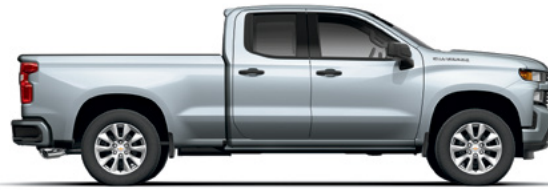
● STANDARD ○ AVAILABLE – NOT AVAILABLE

TB = TRAIL BOSS HC = HIGH COUNTRY

	WT	CUSTOM	CUSTOM TB	LT	RST	LT TB	LTZ	HC
INTERIOR (CONTINUED)								
LTZ Plus Package	–	–	–	–	–	–	○	–
Includes LTZ Convenience Package and Safety Package								
LTZ Premium Package (Crew Cab)	–	–	–	–	–	–	○	–
Includes LTZ Convenience Package, LTZ Convenience Package II, Safety Package, Safety Package II, power sunroof and 20" polished-finish aluminum wheels (RD2)								
Technology Package	–	–	–	–	–	–	○	○
Includes HD Surround Vision with two trailer view camera provisions; ¹ Rear Camera Mirror; ¹ Bed View Camera ¹ and Head-Up Display; LTZ includes enhanced Driver Information Centre (LTZ requires available LTZ Convenience Package II, Safety Package II and power up/down tailgate; High Country requires available Safety Package II)								
High Country Deluxe	–	–	–	–	–	–	–	○
Includes Safety Package II, power sunroof, 22" polished-aluminum wheels (RVA), P275/50R22 all-season [†] tires and all-weather floor liners								
SEATS								
Cloth Rear Seat with Storage Package (Crew Cab)	–	○	○	○	○	○	–	–
Includes rear in-seatback left and right storage compartments and centre fold-out armrest with two cupholders (RST requires available RST Convenience Package or Convenience Package with Bucket Seats; LT Trail Boss requires available LT Trail Boss Convenience Package or Convenience Package with Bucket Seats)								
Up-level Rear Seat with Storage Package (Crew Cab)	–	–	–	○	○	○	●	●
Includes under-seat storage, rear in-seatback left and right storage compartments and centre fold-out armrest with two cupholders (LT, RST and LT Trail Boss require available Leather Package)								
Leather Package	–	–	–	○	○	○	–	–
Includes leather-appointed front seats; Crew Cab includes Up-level Rear Seat with Storage Package (LT requires available Convenience Package II; RST and LT Trail Boss require available Convenience Package with Bucket Seats and Convenience Package II)								

¹ Read the vehicle Owner's Manual for important feature limitations and information. [†] All-season tires may not satisfy winter tire requirements in all regions of the country. Tires specifically designed for severe winter conditions and marked with the "winter tire" symbol  may be required during certain months or in certain regions. Contact your Provincial, Municipal or local road authority for information regarding which tires are required in your particular area.

DIMENSIONS



EXTERIOR, mm (in.)	REGULAR CAB	DOUBLE CAB	CREW CAB SHORT BED	CREW CAB STANDARD BED
Wheelbase	3545 (139.6)	3745 (147.4)	3745 (147.4)	3987 (157.0)
Wheelbase, Trail Boss	–	3746 (147.5)	3747 (147.5)	3989 (157.1)
Length	5829 (229.5)	5885 (231.7)	5885 (231.7)	6127 (241.2)
Width	2061 (81.1)	2063 (81.2)	2063 (81.2)	2063 (81.2)
Height, 2WD	1921 (75.6)	1920 (75.6)	1917 (75.5)	1914 (75.4)
Height, 4x4	1921 (75.6)	1921 (75.6)	1918 (75.5)	1915 (75.4)
Height, Trail Boss	–	1993 (78.5)	1990 (78.4)	1987 (78.2)
Ground Clearance, 2WD	209 (8.2)	200 (7.9)	200 (7.9)	197 (7.8)
Ground Clearance, 4x4	209 (8.2)	205 (8.1)	205 (8.1)	202 (8.0)
Ground Clearance, Trail Boss	–	276 (10.9)	276 (10.9)	272 (10.7)
INTERIOR, mm (in.)	REGULAR CAB	DOUBLE CAB	CREW CAB SHORT BED	CREW CAB STANDARD BED
Headroom, front/rear	1095/– (43.1/–)	1093/1013 (43.0/39.9)	1093/1019 (43.0/40.1)	1093/1019 (43.0/40.1)
Legroom, front/rear	1131/– (44.5/–)	1131/895 (44.5/35.2)	1131/1102 (44.5/43.4)	1131/1102 (44.5/43.4)
Shoulder Room, front/rear	1678/– (66.1/–)	1677/1648 (66.0/64.9)	1677/1655 (66.0/65.2)	1677/1655 (66.0/65.2)
Hip Room, front/rear	1547/– (60.9/–)	1554/1530 (61.2/60.2)	1554/1530 (61.2/60.2)	1554/1530 (61.2/60.2)
BED, mm (in.)	REGULAR CAB	DOUBLE CAB	CREW CAB SHORT BED	CREW CAB STANDARD BED
Inside Length, at floor	2494 (98.2)	2018 (79.4)	1776 (69.9)	2018 (79.4)
Wall-to-Wall, width	1814 (71.4)	1814 (71.4)	1814 (71.4)	1814 (71.4)
Inside Width, between wheelhousings	1286 (50.6)	1286 (50.6)	1286 (50.6)	1286 (50.6)
Inside Height	569 (22.4)	569 (22.4)	569 (22.4)	569 (22.4)
FUEL TANK, L (imp. gal.)	REGULAR CAB	DOUBLE CAB	CREW CAB	
	106 (23.3)	91 (20.0)	91 (20.0)	
CARGO VOLUME, L (cu. ft.) ¹	SHORT BED	STANDARD BED	LONG BED	
	1781 (62.9)	2031 (71.7)	2523 (89.1)	

¹ Cargo and load capacity limited by weight and distribution.



Experience Chevrolet Complete Care, a comprehensive package of owner benefits that are included with every new 2020 Chevrolet Silverado 1500 leased or purchased in Canada.

Chevrolet Complete Care coverage includes:

2-year/24,000 km¹ 2 Complimentary Lube-Oil-Filter Program²

3-year/60,000 km¹ Base Warranty Coverage³

5-year/100,000 km¹ Powertrain Component Warranty Coverage³

5-year/100,000 km¹ Courtesy Transportation⁴

5-year/100,000 km¹ 24/7 Roadside Assistance⁴

6-year/160,000 km¹ Sheet Metal rust-through perforation coverage³

Additional Complete Care coverage, standard on Silverado 1500 LT, RST, LT Trail Boss, LTZ and High Country, and available on Silverado 1500 WT, Custom and Custom Trail Boss, includes:

1-month trial of Chevrolet Connected Services and 1 month of OnStar Safety & Security coverage.^{5,6}

Chevrolet Connected Access^{5,7} includes 10 years of standard connectivity and enables services such as Vehicle Diagnostics^{5,8} and Dealer Maintenance Notification.^{5,8}

Other ownership privileges and programs:⁹

- Chevrolet Protection Plan – the only extended service plan backed by the resources and commitment of General Motors. The Chevrolet Protection Plan may be purchased at the time of vehicle sale or subsequently during the Base Warranty Coverage period.¹⁰
- Chevrolet Owner Centre – Everything you need to know. Anything you need to do. Your Chevrolet Owner Centre makes it easy. Create your account today to get the most out of your new vehicle. Get special alerts and offers, schedule service, review your maintenance schedule, and view how-to videos specifically for your vehicle. All online, anytime. Visit the Owner Centre today to register or take a tour. Find out more at mychevrolet.ca.
- Discount Programs – save on your next vehicle. Students or recent graduates,⁹ people with disabilities⁹ and military personnel⁹ you may be eligible¹¹ for a discount on select new Chevrolet vehicles leased or purchased. Combine your discount with great retail offers for an exceptional value. For full details on all programs offered in Canada, visit programs.gm.ca.
- GM Card® – Cardholders may redeem Earnings towards the total purchase price or lease down payment of an eligible new Chevrolet car, truck or crossover. Restrictions and limitations apply. For full program details, visit gmcard.ca.

Chevrolet ownership experience. Chevrolet is committed to enhancing the vehicle shopping and ownership experience through a wide array of programs. Visit chevrolet.ca to build and price, find a vehicle, request a quote, compare vehicles, find financial tools or track your vehicle order. You'll also find information about 24-hour Roadside Assistance, Courtesy Transportation, Customer Assistance, GM Mobility, safety and current incentives.

Important words about this brochure. Some of the equipment shown or described throughout this brochure may be available at extra cost. We have tried to make this brochure comprehensive and factual. We reserve the right, however, to make changes at any time, without notice, in prices, colours, materials, equipment, specifications, models and availability. Specifications, dimensions, measurements, ratings and other numbers in this brochure and other printed materials provided at

the dealership or affixed to vehicles are approximates based on design and engineering drawings, prototypes and laboratory tests. Your vehicle may differ due to variations in manufacture and equipment. Since some information may have been updated since the time of printing, please check with your Chevrolet dealer for complete details. General Motors of Canada Company reserves the right to lengthen or shorten the model year for any product, for any reason, or to start and end model years at different times. Certain vehicle features may lose their usefulness over time due to obsolescence from technological changes. Unless otherwise noted, all claims based on the GM Large Pickup segment and the latest available competitive information. Excludes other GM vehicles.

Engines. Chevrolet products are equipped with engines produced by GM Global Propulsion Systems or other suppliers to GM worldwide. The engines in Chevrolet products may also be used in other GM makes and models.

Assembly. Chevrolet vehicles and their components are assembled or produced by different operating units of General Motors, its subsidiaries or suppliers to GM worldwide. We sometimes find it necessary to produce Chevrolet vehicles with different or differently sourced components than originally scheduled. Since some options may be unavailable when your vehicle is assembled, we suggest you verify that your vehicle includes the equipment you ordered and that, if there were changes, they are acceptable to you.

Fleet orders. Some standard content and owner benefits may be modified or deleted on fleet orders. See dealer for details.

An important note about alterations and warranties. Installations or alterations to the original equipment vehicle (or chassis) as distributed by General Motors are not covered by the New Vehicle Limited Warranty. The special body company, assembler, equipment installer or upfitter is solely responsible for warranties on the body or equipment and any alterations (or any effect of the alterations) to any of the parts, components, systems or assemblies installed by GM. General Motors is not responsible for the safety or quality of design features, materials or workmanship of any alterations by such suppliers.

Trademarks. The marks appearing in this brochure including, but not limited to, General Motors, GM, Chevrolet, the Chevrolet emblem, Silverado and their respective logos, emblems, slogans and vehicle model names and body designs; and other marks such as Active Fuel Management, Duramax, Duramax, EcoTec3, Find New Roads, IntelliBeam, myChevrolet, OnStar, the OnStar emblem and StabiliTrak are trademarks of General Motors LLC, OnStar LLC and/or General Motors of Canada Company, its subsidiaries, affiliates or licensors. Apple, Apple CarPlay and iPhone are trademarks of Apple Inc., registered in the U.S. and other countries. Bluetooth is a registered trademark of Bluetooth SIG, Inc. Bose is a registered trademark and Richbass is a trademark of the Bose Corporation. Facebook is a registered trademark of Facebook, Inc. DuraTrac and Wrangler are registered trademarks of THE GOODYEAR TIRE & RUBBER COMPANY. Goodyear is a registered trademark of GOODYEAR CANADA INC. HD Radio is a registered trademark of the iBiquity Digital Corporation. © 2019 Sirius XM Canada Inc. "SiriusXM," the SiriusXM logo, channel names and logos are registered trademarks of Sirius XM Radio Inc. and are used under license. All rights reserved. Rancho is a registered trademark of Tenneco Automotive Operating Company, Inc. Twitter is a trademark of Twitter, Inc. YouTube is a registered trademark and Google, Android, Google Play and Android Auto are trademarks of Google LLC. Wi-Fi is a registered trademark of Wi-Fi Alliance.

© Copyright 2019 General Motors of Canada Company. All rights reserved. All text, images, graphics, and other materials in this brochure are subject to the copyright and other intellectual property rights of General Motors LLC and/or General Motors of Canada Company. These materials may not be reproduced, distributed or modified without the express written permission of General Motors LLC and/or General Motors of Canada Company. October 2019.



¹ Whichever comes first. ² Limit of two (2) Lube-Oil-Filter services during the program period. Fluid top-offs, inspections, tire rotations, wheel alignments and balancing, etc., are not covered. Additional conditions and limitations apply. See participating dealer for details. ³ Conditions and limitations apply. See Warranty Booklet for details. ⁴ Conditions and limitations apply. See Owner's Manual for details. ⁵ Requires factory-installed equipment purchase. ⁶ Properly equipped Chevrolet vehicles are eligible for 1 month of Connected Services trial and OnStar Safety & Security Plan coverage, starting at trial activation date; includes emergency and navigation services, Connected Navigation, the Remote Access Plan, plus a 3 GB or 1-month (whichever comes first) data plan trial. Services subject to user terms and limitations; capabilities vary by model and/or vehicle configuration; visit onstar.ca for details. Data plans offered by AT&T or its local service provider. Availability subject to change. GM Canada may modify, extend or terminate offers for any reason, in whole or in part, at any time, without notice. Requires vehicle electrical system (including battery), wireless service and GPS satellite signal to be available and operating for features to function properly. ⁷ Limitations apply. Not transferable. Standard connectivity available to original purchaser for 10 years from the trial activation date for properly equipped vehicles. Visit onstar.ca for details and further plan limitations. Connected Access does not include emergency or security services. Availability of Connected Access and any of its services is dependent on compatible 4G LTE wireless networks and is also subject to change. ⁸ Capabilities vary by model and/or vehicle configuration and service plan. Visit onstar.ca for vehicle availability. Message and data rates may apply. Requires active service, email address on file and enrollment in Vehicle Diagnostics. Not all issues will deliver alerts. On-Demand Diagnostics requires a paid service plan. ⁹ Conditions and limitations apply. ¹⁰ Please work with your dealer to select the plan that is suitable for your driving needs. Dealers are free to set their own prices. ¹¹ Subject to eligibility.

FIND NEW ROADS™

CHEVROLET.CA

