

2013 **EXPEDITION+MAX**



Go Further



## Full-sized adventures ahead.

People. Pets. Cargo. Towing. Or all of the above. Whatever your day brings, the 2013 Ford Expedition and Expedition MAX are built to help you power through it with ease. Roomy seating for up to 8 means everybody's welcome. And there's plenty of cargo space in back – up to 3,067 litres (108.3 cu. ft.) on Expedition and 3,704 litres (130.8 cu. ft.) on Expedition MAX.<sup>1</sup> While you're parking, the Forward Sensing System<sup>2</sup> alerts you to large, stationary objects detected in front of the vehicle. When you're towing, a new standard trailer brake controller helps enhance braking performance. Go further in a 2013 Expedition.

XLT. Oxford White.

<sup>1</sup>Cargo and load capacity limited by weight and weight distribution. <sup>2</sup>Available feature.

2013 EXPEDITION+MAX  
ford.ca







## Powerful performer helps you maintain control.

The proven 5.4L 3-valve V8 engine and 6-speed automatic transmission under the hood of every Expedition give you 11.5L/100 km (25 mpg) hwy,<sup>1</sup> 310 horsepower and 365 lb.-ft. of torque, along with the ability to tow up to 4,082 kg (9,000 lbs.).<sup>2</sup> This powertrain is also flex-fuel capable, so it runs on gasoline, E85 or any blend of the two. Joining standard trailer sway control, a new trailer brake controller helps increase towing confidence by balancing the performance of the vehicle brakes and your electric trailer brakes.<sup>3</sup> For maximized traction, the convenient 4x4 AUTO mode on our Control Trac<sup>®</sup> 4-wheel drive senses when the vehicle is on a loose or slippery surface and automatically transfers power to the appropriate wheels.

**11.5**L/100 km (**25**MPG) HWY<sup>1</sup>  
**16.6**L/100 km (**17**MPG) CITY<sup>1</sup>

Limited MAX. Kodiak Brown Metallic. Available equipment.

<sup>1</sup>16.6L/100 km city and 11.5L/100 km hwy (17 mpg city/25 hwy). Fuel consumption ratings based on Transport Canada approved test methods. Actual fuel consumption will vary. <sup>2</sup>When properly equipped. <sup>3</sup>Trailer brake controller verified to be compatible with electrically actuated drum brakes and certain electric-over-hydraulic brake systems. See your Ford of Canada Dealer for details.

2013 EXPEDITION+MAX  
ford.ca





## Treats you well in all 3 rows.

Relax into supportive leather-trimmed<sup>1</sup> seats as you maximize your comfort via the 10-way power-adjustable driver's seat<sup>1</sup> and power-adjustable pedals. Dual-zone electronic automatic temperature control<sup>1</sup> enables you and your copilot each to have your way. Heated and cooled front seats<sup>1</sup> can help chase away a chill – or create one. To pamper more passengers, heated seats are offered in the 2nd row<sup>1</sup> as well. Best-in-class<sup>2</sup> 3rd-row leg room means even adults will be happy to ride in back. To seat as many as 8, you'll want the standard 2nd-row 40/20/40 split-fold seat with CenterSlide<sup>®</sup> and 3rd-row 60/40 split-fold seat. Our ultra-convenient PowerFold<sup>®</sup> 3rd-row seat<sup>1</sup> is standard on Limited and included in the XLT Premium Package! The 2013 Expedition takes care of you and your passengers in luxurious ways.

XLT. Camel leather trim. Available equipment including XLT Premium Package.

<sup>1</sup>Available feature. <sup>2</sup>Extended Utilities class.

2013 EXPEDITION+MAX  
ford.ca







## Keeps you connected.

### Hands-free calls and music.

No more searching for your phone or media player. No device on your ear. With voice-activated Ford SYNC,<sup>®1</sup> you just touch a button on the steering wheel and say things like "Call: Melissa," or "Play playlist: roadtrip." Once paired, the system recognizes your phone and downloads your contacts to support voice calling. SYNC also includes 911 Assist.<sup>®</sup>

### Full-colour travel guide.

The voice-activated Navigation System<sup>2</sup> (shown) features a vibrant 6.5" LCD touch screen with interactive maps you can zoom and scroll. Play DVDs while Expedition is in Park, store nearly 10 gigs of your digital music and much more with this easy-to-use system.

### Boundless entertainment.

Listen to your favourites all across Canada with SiriusXM<sup>®</sup> Satellite Radio.<sup>3</sup> Your 6-month prepaid subscription gets you the best in audio entertainment including 100% commercial-free music from every genre, world-class news, sports, comedy and entertainment.

XLT. Available equipment including XLT Premium Package.

<sup>1</sup>Some mobile phones and some digital media players may not be fully compatible. Driving while distracted can result in loss of vehicle control. Only use mobile phones and other devices, even with voice commands, when it is safe to do so. SYNC voice recognition available in English, French and Spanish. <sup>2</sup>Available feature. <sup>3</sup>SiriusXM Satellite Radio subscriptions sold after 6-month prepaid period expires. Subscriptions are governed by SiriusXM Customer Agreement; see [sirius.ca](http://sirius.ca).



## Strengthens your peace of mind.

Twists. Turns. Teenage drivers. Expedition is engineered to help you master these and many other challenges. Standard AdvanceTrac<sup>®</sup> with RSC<sup>®</sup> (Roll Stability Control<sup>™</sup>) uses 2 gyroscopic sensors to help keep all 4 wheels firmly planted!<sup>1</sup> It automatically enhances vehicle control in wet or slippery conditions. Adults can enable standard MyKey<sup>®</sup> to mute the audio if front safety belts are not fastened when young drivers take the wheel. Every Expedition also features the personalized protection of dual-stage front airbags, front-seat side airbags and our Safety Canopy<sup>®</sup> System, which increases protection with a rollover sensor and 3-row side-curtain airbags. If an airbag has deployed or a safety belt pretensioner has activated in certain collisions, our SOS Post-Crash Alert System<sup>™</sup> flashes the hazard lights and sounds the horn to help alert others.<sup>2</sup> In the event of airbag deployment, Ford SYNC<sup>®</sup> with 911 Assist<sup>®</sup> uses your paired mobile phone to call 911.<sup>3</sup> If needed, it can even give the operator an urgent message for you.

Limited MAX. Ruby Red Metallic Tinted Clearcoat.<sup>4</sup> Available equipment.

<sup>1</sup>Remember that even advanced technology cannot overcome the laws of physics. It's always possible to lose control of a vehicle due to inappropriate driver input for the conditions. <sup>2</sup>SOS hardware may become damaged or the battery may lose power in a crash, which could prevent operation. Not all crashes will activate an airbag or safety belt pretensioner. <sup>3</sup>The vehicle's electrical system (including the battery), the wireless service provider's signal and a connected mobile phone must all be available and operating for 911 Assist to function properly. These systems may become damaged in a crash. The paired mobile phone must be connected to SYNC, and the 911 Assist feature enabled, in order for 911 to be dialed. When the feature is ON, 911 Assist uses your paired and connected mobile phone to assist occupants to contact emergency services by dialing 911 if your airbag deploys or, on certain vehicles, if the emergency fuel pump shut-off is activated. <sup>4</sup>Late availability.

2013 EXPEDITION+MAX  
ford.ca





## Expands your versatility.



Take advantage of its huge, flat load floor to carry all sorts of cargo. Let more sun shine in through the power moonroof. Slide the centre of its 2nd-row seat forward for convenient access to little ones. Stay organized. Clear up blind spots. Ease cargo loading, along with passenger entry and exit. As your transportation needs change, Expedition smartly helps you adapt.

- Power moonroof<sup>1</sup>
- CenterSlide<sup>®</sup> 2nd-row seat
- Cargo Management System (Expedition MAX)
- Blind spot mirrors
- 3,704 litres (130.8 cu. ft.) of cargo space (Expedition MAX)
- Power liftgate<sup>1</sup> and power-deployable running boards<sup>1</sup>



<sup>1</sup>Available feature.



XLT in Blue Jeans Metallic customized with smoked hood and side window deflectors, splash guards, roof-mounted ski carrier by THULE®¹ and trailer towing accessories

Portable DVD Rear-Seat Entertainment System by NextBase®¹

All-weather floor mats

Remote start systems

Illuminated door sill plates

#### Exterior

- Chrome exhaust tip
- Roof crossbars
- Racks and carriers¹
- Locking fuel plug
- Sportz® SUV tents¹
- Wheel lock kit
- Full vehicle covers¹
- Trailer hitch balls/drawbars

#### Interior

- Interior light kit
- Cargo organizers and protectors
- Carpeted floor mats

#### Electronics

- Vehicle security systems
- Warning sensor systems¹

¹Ford Licensed Accessory.



# EXPEDITION+MAX Standard Features

## Mechanical

5.4L 3-valve V8 FFV engine
6-speed automatic transmission with tow/haul mode
4-wheel independent suspension with coil-over shocks – Front: double-wishbone, short- and long-arm (SLA) design; rear: multilink design
4-wheel power disc brakes with Anti-Lock Brake System (ABS), brake assist and electronic brakeforce distribution (EBD)
106-litre fuel tank capacity (127-litre on Expedition MAX)
Control Trac® 4-Wheel-Drive (4WD) System
Easy Fuel® capless fuel filler
Engine block heater
Full-size spare wheel and tire
Non-limited-slip rear axle – 3.31 ratio (Expedition only)
Non-limited-slip rear axle – 3.73 ratio (Expedition MAX only)
Variable-assist, power rack-and-pinion steering

## Seating

1st-row bucket seats
2nd-row 40/20/40 split-fold seat with CenterSlide® (slide-forward feature for centre section) reclines and folds flat to floor in cargo mode

## Interior

12-volt powerpoints (3)
Air conditioning
Analog instrumentation with voltmeter, speedometer/odometer, tachometer, and oil pressure, water temperature and fuel gauges
Assist handles (2 in 1st row and 2 in 2nd row)
Auto-dimming rearview mirror
Auxiliary audio input jack
Auxiliary rear heat and air conditioning
Cargo Management System (Expedition MAX only)
Carpeted floor mats in 1st and 2nd rows
Cruise control
Cupholders (9)
Dual-blade sun visors with illuminated vanity mirrors
Floor console with storage bin, coin holder, 2 headphone jacks, 4 cupholders, 2 powerpoints, auxiliary rear audio and climate controls, and pen holder

## Interior (continued)

Ford SYNC® voice-activated, in-vehicle connectivity system
Front door-trim panels with map pockets and cupholders (up to 20-ounce bottles)
Leather-wrapped steering wheel
Message centre
Power door locks
Power rear quarter windows
Power windows with one-touch-up/-down driver's side window feature
Rear floor air vents
SiriusXM Satellite Radio with 6-month prepaid subscription
Steering wheel-mounted audio and cruise controls
Tilt steering column
Universal garage door opener

## Exterior

Automatic headlamps with wiper-activated headlamps feature
Body-colour lower bodyside mouldings, wheel-lip mouldings and bumpers
Chrome door and liftgate handles
Chrome exhaust tip
Chrome grille
Concealed antenna in rear quarter glass
Fog lamps
Front tow hooks
Heavy-Duty Trailer Tow Package includes Class IV hitch receiver, 7-/4-pin connectors, heavy-duty auxiliary transmission oil cooler, heavy-duty radiator, electronic brake wiring kit, and integrated trailer brake controller
Liftgate with flip-up glass
Privacy glass (rear doors, rear quarter windows and rear liftgate)
Rear-window defroster
Reverse Sensing System
Windshield wipers – Front: speed-sensitive, 2-speed variable-intermittent; rear: intermittent with washer

## Safety & Security

3-point safety belts for all seating positions
AdvanceTrac® with RSC® (Roll Stability Control™)
Belt-Minder™ front safety belt reminder
Child-safety rear door locks
Dual-stage front airbags <sup>1</sup> , safety belt pretensioners, safety belt energy-management retractors, safety belt usage sensors, driver's seat position sensor, crash severity sensor and restraint control module
Front-seat side airbags <sup>1</sup>
Height-adjustable shoulder belts for 1st-row outboard positions
LATCH – Lower Anchors and Tether Anchors for Children on rear-outboard seat positions
MyKey®
Perimeter alarm
Remote Keyless Entry System with integrated key transmitter remotes
Safety Canopy® System with 3-row side-curtain airbags <sup>1</sup> and rollover sensor
SecuriCode™ keyless entry keypad
SecuriLock® Passive Anti-Theft Engine Immobilizer System
Side-intrusion door beams
SOS Post-Crash Alert System™
Tire Pressure Monitoring System (excludes spare)
Trailer sway control



## Horsepower, Torque & Estimated Fuel Consumption Ratings<sup>2</sup>

5.4L 3V V8 FFV Engine	Horsepower: 310 @ 5,100 rpm	Torque (lb.-ft.): 365 @ 3,600 rpm
6-speed automatic	16.6L/100 km city and 11.5L/100 km hwy (17 mpg city/25 hwy)	

<sup>1</sup>Always wear your safety belt and secure children in the rear seat. <sup>2</sup>Fuel consumption ratings based on Transport Canada approved test methods. Actual fuel consumption will vary.

## EXPEDITION+MAX Standard Features



### XLT

Includes all standard features, plus:

#### Seating

1st-row cloth bucket seats with 6-way power driver's seat with manual lumbar

3rd-row 60/40 split-fold-flat-to-floor bench seat

#### Interior

AM/FM stereo and single-CD player with MP3 capability and 6 speakers

Overhead console with map lights, sunglasses holder, conversation mirror and power rear quarter window switches

Power-adjustable pedals

#### Exterior

17" aluminum wheels with P265/70R17 OWL tires

Black, power, heated sideview mirrors with security approach lamps and integrated blind spot mirrors

Black roof-rack side rails with black crossbars

Black running boards

Dual reflector headlamps



### Limited/Limited MAX

Includes select XLT features, plus:

#### Seating

1st-row, 10-way power, heated and cooled leather-trimmed bucket seats, including power lumbar and recline, with memory feature for driver's seat

Heated 2nd-row seats

PowerFold® 3rd-row seat

#### Interior

110-volt power outlet

Dual-zone electronic automatic temperature control

Leather-wrapped shift knob

Leather-wrapped steering wheel with real wood insert

Power-adjustable pedals with memory

Power moonroof with mini-overhead console

Premium Sound System with single-CD player, MP3 capability, and 7 speakers (including a subwoofer) with 340 watts

Rear view camera

Woodgrain trim accents

#### Exterior

20" polished aluminum wheels with P275/55R20 BSW tires

Body-colour, power-adjustable/-folding, heated sideview mirrors with auto-dimming driver's side, security approach lamps, integrated blind spot mirrors, integrated turn signal indicators and memory

Body-colour running boards

Chrome roof-rack side rails with black crossbars

Complex-reflector halogen headlamps with blackout treatment

Forward Sensing System

Power liftgate

Rain-sensing windshield wipers

Exterior Dimensions	mm (in.)	Expedition/MAX
Wheelbase	3,023 (119.0)/3,327 (131.0)	
Length	5,245 (206.5)/5,621 (221.3)	
Height (with options)	1,961 (77.2)/1,989 (78.3)	
Width – Excluding mirrors	2,002 (78.8)/2,002 (78.8)	
Width – Including mirrors	2,332 (91.8)/2,332 (91.8)	
Width – Mirrors folded	2,024 (79.7)/2,024 (79.7)	
Min. running ground clearance	221 (8.7)/221 (8.7)	
Liftover height	874 (34.4)/912 (35.9)	
Overhang – Front	996 (39.2)/996 (39.2)	
Overhang – Rear	1,227 (48.3)/1,298 (51.1)	
Ramp breakover angle	18.3°/18.7°	
Angle of approach	22.6°/24.1°	
Angle of departure	21.5°/20.9°	

Interior Dimensions	mm (in.)	Expedition/MAX
<b>1st Row</b>		
Head room	1,006 (39.6)/1,003 (39.5)	
Shoulder room	1,605 (63.2)/1,605 (63.2)	
Hip room	1,529 (60.2)/1,529 (60.2)	
Leg room	1,044 (41.1)/1,044 (41.1)	
<b>2nd Row</b>		
Head room	1,011 (39.8)/1,008 (39.7)	
Shoulder room	1,618 (63.7)/1,618 (63.7)	
Hip room	1,521 (59.9)/1,521 (59.9)	
Leg room	993 (39.1)/993 (39.1)	
<b>3rd Row (if equipped)</b>		
Head room	973 (38.3)/965 (38.0)	
Shoulder room	1,318 (51.9)/1,704 (67.1)	
Hip room	1,275 (50.2)/1,316 (51.8)	
Leg room	958 (37.7)/958 (37.7)	

Cargo Volume	litres (cu. ft.) <sup>1</sup>	Expedition/MAX
Maximum cargo volume	3,067 (108.3)/3,704 (130.8)	
Behind 2nd row	1,557 (55.0)/2,421 (85.5)	
Behind 3rd row	527 (18.6)/1,206 (42.6)	

Maximum Loaded Trailer Weight	kg (lbs.) <sup>2</sup>	Expedition/MAX
3.31 axle ratio		
4x4 Class IV	4,082 (9,000)/–	
3.73 axle ratio		
4x4 Class IV	4,082 (9,000)/3,946 (8,700)	

<sup>1</sup>Cargo and load capacity limited by weight and weight distribution. <sup>2</sup>Maximum towing capability when properly equipped. Maximum capability will vary based on passenger and cargo loads, and optional equipment installed on the vehicle. See your Ford of Canada Dealer for more information. Dimensions may vary by trim level. Microsoft is a registered trademark of Microsoft Corporation. "SiriusXM," the SiriusXM logo, channel names and logos are trademarks of SiriusXM Radio Inc. and are used under licence. THULE is a registered trademark of Thule Sweden AB. INVISION is a trademark of Audiovox Corporation. Power Code is a trademark of Code Systems, Inc.



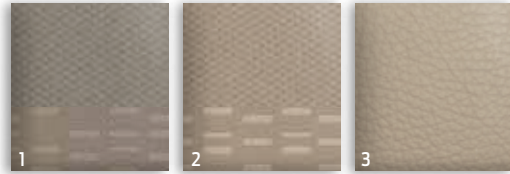
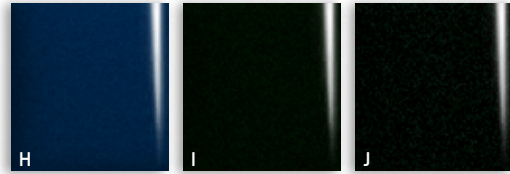
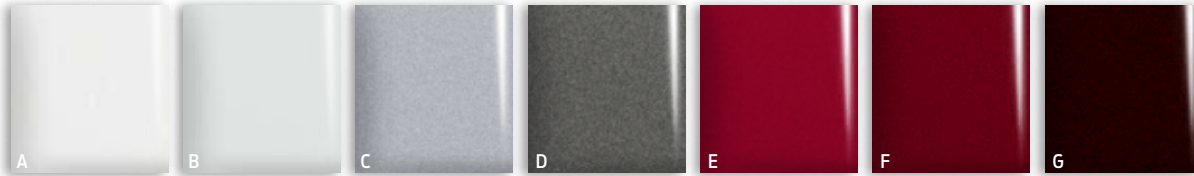


Stone cloth trim. | Power rear quarter windows. | All-weather floor mats in 1st and 2nd rows! | Ford SYNC® | Power-adjustable pedals.



<sup>1</sup>Available feature.

# XLT



## Exteriors

Exteriors	Interiors		
<b>A</b> White Platinum Metallic Tri-coat <sup>1,2</sup>			<b>3</b>
<b>B</b> Oxford White	<b>1</b>	<b>2</b>	<b>3</b>
<b>C</b> Ingot Silver Metallic <sup>3</sup>	<b>1</b>		
<b>D</b> Sterling Grey Metallic <sup>3</sup>	<b>1</b>		
<b>E</b> Ruby Red Metallic Tinted Clearcoat <sup>1,4</sup>			<b>3</b>
<b>F</b> Autumn Red Metallic	<b>1</b>	<b>2</b>	<b>3</b>
<b>G</b> Kodiak Brown Metallic <sup>2</sup>			<b>3</b>
<b>H</b> Blue Jeans Metallic	<b>1</b>	<b>2</b>	<b>3</b>
<b>I</b> Green Gem Metallic	<b>1</b>	<b>2</b>	<b>3</b>
<b>J</b> Tuxedo Black Metallic	<b>1</b>	<b>2</b>	<b>3</b>

- 1 Stone Cloth — Standard
- 2 Camel Cloth — Standard
- 3 Camel Leather — Optional (requires XLT Premium Package)



17" Aluminum Standard



18" Machined Aluminum Optional; Included with XLT Premium Package



20" Premium Painted Aluminum Optional with XLT Premium Package

## Available Equipment Group

Equipment Group 201A – **XLT Premium Package** includes dual-zone electronic automatic temperature control; 10-way power, heated and cooled driver and front-passenger seats; Camel leather-trimmed 1st- and 2nd-row seating; PowerFold® 3rd-row seat; memory feature for driver's seat, sideview mirrors and power-adjustable pedals; power liftgate; Pale Adobe running boards, bumpers, lower bodyside mouldings and wheel-lip mouldings; 18" machined aluminum wheels; leather-wrapped shift knob; woodgrain interior trim accents; 110-volt power outlet + **Driver Vision Package** includes rear view camera and rain-sensing windshield wipers

## Available Options

- 18" machined aluminum wheels
- 20" premium painted aluminum wheels (requires XLT Premium Package)
- 2nd-row bucket seats (requires XLT Premium Package)
- 3.73 non-limited-slip rear axle
- All-weather floor mats in 1st and 2nd rows
- Navigation System with voice-activation, 6.5" LCD touch screen, nearly 10-gigabyte hard drive, and single-CD/DVD Premium Sound System (requires XLT Premium Package)
- Power Code™ Remote Start System
- Power-deployable running boards (requires XLT Premium Package)
- Power moonroof with mini-overhead console
- Rear load-levelling air suspension

## Available Ford Custom Accessories

Visit your Ford of Canada Dealer to shop the complete collection



Blue Jeans Metallic. Available equipment including XLT Premium Package.

<sup>1</sup>Additional charge. <sup>2</sup>Available only with XLT Premium Package. <sup>3</sup>Not available with XLT Premium Package. <sup>4</sup>Late availability. Colours are representative only. See your Ford of Canada Dealer for actual paint/trim options.



# Limited/Limited MAX

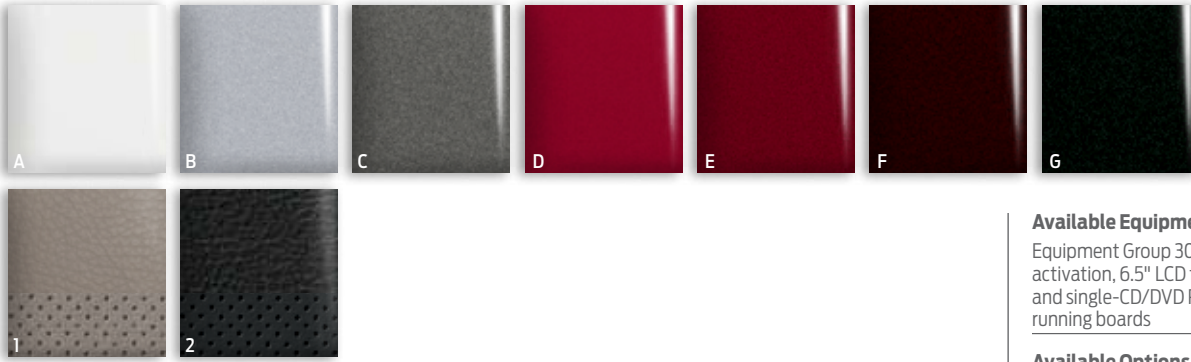


Charcoal Black leather trim with perforated inserts and available equipment. | Heated 2nd-row seats. | 10-way power-adjustable, heated and cooled 1st-row bucket seats. | 2nd-row bucket seats.<sup>1</sup> | Dual head restraint DVD by INVISION!<sup>2</sup>



<sup>1</sup>Available feature. <sup>2</sup>Ford Licensed Accessory.

# Limited/Limited MAX



## Exteriors

<b>A</b> White Platinum Metallic Tri-coat <sup>1</sup>	<b>1</b>	<b>2</b>
<b>B</b> Ingot Silver Metallic	<b>1</b>	<b>2</b>
<b>C</b> Sterling Grey Metallic	<b>1</b>	<b>2</b>
<b>D</b> Ruby Red Metallic Tinted Clearcoat <sup>1,2</sup>	<b>1</b>	<b>2</b>
<b>E</b> Autumn Red Metallic	<b>1</b>	<b>2</b>
<b>F</b> Kodiak Brown Metallic	<b>1</b>	<b>2</b>
<b>G</b> Tuxedo Black Metallic	<b>1</b>	<b>2</b>

- 1 Stone Leather with Perforated Inserts – Standard  
 2 Charcoal Black Leather with Perforated Inserts – Standard

## Interiors



20" Polished Aluminum  
Standard

## Available Equipment Group

Equipment Group 301A – **Navigation System** with voice-activation, 6.5" LCD touch screen, nearly 10-gigabyte hard drive, and single-CD/DVD Premium Sound System + power-deployable running boards

## Available Options

2nd-row bucket seats  
 3.73 non-limited-slip rear axle (standard on MAX)  
 All-weather floor mats in 1st and 2nd rows  
 Dual head restraint DVD by INVISION™<sup>3</sup>  
 Power Code™ Remote Start System  
 Rear load-levelling air suspension

## Available Ford Custom Accessories

Visit your Ford of Canada Dealer to shop the complete collection



Limited MAX. Sterling Grey Metallic. Available equipment.

<sup>1</sup>Additional charge. <sup>2</sup>Late availability. <sup>3</sup>Ford Licensed Accessory.  
 Colours are representative only. See your Ford of Canada Dealer for actual paint/trim options.

2013 EXPEDITION+MAX  
 ford.ca







# QUALITY, GREEN, SAFE AND SMART.

[ford.ca](http://ford.ca)

## Our commitment to you: Peace-of-Mind Protection

- Basic Coverage: 3 years/60,000 km
- Powertrain Limited Warranty: 5 years/100,000 km
- Corrosion Warranty: 5 years/unlimited distance
- Roadside Assistance: 5 years/100,000 km

Certain conditions apply. For more information on these warranties and coverages, ask your local Ford of Canada Dealer or visit [ford.ca](http://ford.ca).

**Ford Extended Service Plan.** Help protect your investment and add to your peace of mind by complementing your vehicle purchase or lease with a Ford Extended Service Plan (ESP). Ford ESP protects you against unexpected repair costs after your Basic Coverage in the New Vehicle Limited Warranty expires by covering many vehicle components. Enjoy the drive even more by complementing your ESP with a prepaid maintenance plan, which covers all required scheduled maintenance for your vehicle, plus 8 wear items. See your Ford of Canada Dealer for details.

□ **Ford Credit.** Get the ride you want. Whether you plan to lease or finance, you'll find the choices that are right for you at Ford Credit. Ask your local Ford of Canada Dealer for details or check us out at [fordcredit.ca](http://fordcredit.ca). □ **Genuine Ford Accessories.** Ford of Canada warrants that its authorized Dealers will repair or replace any Genuine Ford Accessory that is properly installed by the authorized Dealer that sold the accessory and found to be defective in factory-supplied materials or workmanship. The accessory will be warranted for whichever provides you the greatest benefit: 12 months/20,000 km (whichever occurs first), or the remainder of your 36-month/60,000-km (whichever occurs first) Basic Coverage in the New Vehicle Limited Warranty. Contact your local Ford of Canada Dealer for details. □ **Ford Licensed Accessories (FLA)** are warranted by the accessory manufacturer's limited warranty. The warranty coverage will vary by accessory manufacturer. Ford Licensed Accessories are fully designed and developed by the accessory manufacturer and have not been designed or tested to Ford Motor Company engineering requirements. Contact your local Ford of Canada Dealer for details regarding the accessory manufacturer's limited warranty and/or for a copy of the FLA product limited warranty offered by the accessory manufacturer.

□ **For prompt, courteous answers to your questions: Ford Customer Relationship Centre 1-800-565-3673; Ford Credit Customer Service Centre: 1-877-636-7346.**

Competitive comparisons are based on 2012 competitive models, publicly available information and Ford data at the time of printing of the 2013 original printed version. Some features discussed may be optional. Vehicles shown may contain optional equipment. Features shown may be offered only in combination with other options or subject to additional ordering requirements or limitations. Dimensions shown may vary due to optional features and/or production variability. Following publication of the 2013 original printed brochure, certain changes in standard equipment, options and the like, or product delays may have occurred which would not be included in these pages. Your Ford of Canada Dealer is your best source for up-to-date information. Ford Motor Company of Canada, Limited, reserves the right to change product specifications at any time without incurring obligations. Colours may not be exactly as illustrated. Please see your sales consultant for specific colour and model availability. Please visit your local Ford of Canada Dealer or [ford.ca](http://ford.ca) for complete vehicle details.

Questions or comments? Reach out to us on Facebook, Twitter or YouTube.

