

The New **TUCSON**

2019



The H-Factor.™

What is the H-Factor™? It means you can have it all.

Our company believes in pushing the boundaries and challenging conventional thinking. Our very name, “Hyundai”, stands for modernity in the Korean language and it is this one word that helps represent everything we stand for. We don’t approach vehicle development in a traditional way. Our company is structured differently. We think differently. We find the modern way. It’s our mission to offer top quality, feature-rich vehicles at an affordable price.

We offer elite quality through meticulous design and painstaking craftsmanship. Our three design centres in Korea, the U.S. and Europe compete against each other to bring you cutting-edge designs — designs that not only look stunning but are also aerodynamic and fuel efficient.

We are the only global automaker to manufacture our own Advanced High-Strength Steel because, simply put, we just weren’t satisfied with what was available.

We test our vehicles in areas like the Arctic, our proving grounds in the Mojave Desert and on Germany’s world-famous Nürburgring circuit to deliver the durability and reliability you demand. And not only do we package our vehicles with advanced safety and technology, we back all our vehicles with one of the best automotive warranties in the industry. This means you really can have it all, quality and value together. That’s the H-Factor.™



Tucson SUPERSTRUCTURE™ shown,
made with our Advanced High-Strength Steel.



Full of life.

The redesigned Hyundai Tucson is more than just a Sport Utility Vehicle, it's the vehicle that's always up for your adventures. With innovative features to keep you connected like standard Apple CarPlay^{TMΔ} and Android Auto^{TM®} smartphone connectivity, capable performance offered with available HTRACTM All-Wheel Drive and the choice between two engines, adventure is waiting. Let's go!





Redesigned for wherever curiosity takes you.

The redesigned elements of the 2019 Tucson include a bolder hexagonal front grille framed by a new headlight and daytime running light design. At the rear, you will notice a completely redesigned rear bumper with new, available LED tail lights.



Available LED headlights



Available chrome-tipped dual exhaust



Available Smart Power Liftgate



Available 19" alloy wheels

Power your adventures.

Whether exploring city streets, cruising down the highway or fighting through Monday morning gridlock, the 2.0L and available 2.4L engines will get you where you're going with power and efficiency. An available HTRAC™ All-Wheel Drive system is constantly adjusting to provide optimal traction wherever your journeys take you.



Standard 2.0L GDI engine with
6-speed automatic transmission

161 horsepower

150 lb-ft torque

Available 2.4L GDI engine with
6-speed automatic transmission

181 horsepower

175 lb-ft torque





Ultimate model shown.
May not be exactly as shown.

Explore in comfort.

Capability means nothing without comfort, which is why the Tucson comes handsomely equipped with a wealth of features and technology designed around you. Enjoy the available 8-way adjustable power driver's seat with ergonomic lumbar support, and available dual-zone temperature control so you and your front passenger can both find the perfect setting.



Blue skies and starry nights

The available panoramic sunroof allows you to enjoy fresh air, clear views and starry nights. Its expansive size spans above both front and rear passengers.



All-season comfort

Enjoy winter adventures in comfort thanks to the standard heated front seats, available heated steering wheel and available heated rear seats for the crew in the back. When the temperature starts to warm up over summer, you and your co-pilot can cool off with available ventilated front seats.



Convenient versatility

No need to search for your keys, or kick and shuffle your feet to open the rear liftgate. The available proximity key technology allows you to automatically open the available Smart Power Liftgate and unload your two hands' worth of cargo effortlessly. Load up for your next adventure with 1,754 litres of cargo space when the rear seats are folded down, or split and fold them 60/40 to accommodate longer items and your passengers.

Stay connected to the world around you.



Apple CarPlay™ and Android Auto™

Standard Apple CarPlay™ and Android Auto™ put the power of your smartphone on the standard 7.0" touch-screen. Seamlessly interact with your favourite apps, use voice commands to send text messages and stream songs from your favourite playlist. An available 8.0" touch-screen provides added convenience with a built-in navigation system. It includes a complimentary Hyundai Map Care system, which includes two updates per year for five years free of charge.



Surround View Monitor

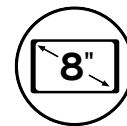
Get multiple perspectives when you park, including an aerial view of the vehicle for a comprehensive look at your surroundings, with the available Surround View Monitor. Choose from full 360-degree, front, rear or curb-side views to help you see every angle.



Available rain-sensing
windshield wipers



Available proximity keyless entry
with push-button ignition



Available 8.0" touch-screen
with navigation system



Infiniti® audio system with 8 speakers

The available Infiniti® audio system includes an external amplifier and 8 speakers strategically placed inside the cabin to provide an immersive, surround sound experience for all occupants.



Features include:

- ✓ Remote vehicle start with climate control
- ✓ Remote lock/unlock
- ✓ Find my car
- ✓ SOS emergency and roadside assistance
- ✓ Automatic collision notification
- ✓ Local Search powered by Google™
- ✓ Complimentary 5-year subscription on equipped models

BlueLink®

Once set up, our available BlueLink® connected car system conveniently enables you to locate your vehicle, remotely start the engine for advanced warming or cooling, unlock or lock the doors and, in the event of an accident, can automatically call emergency services. Please see your dealer for full service-level details.

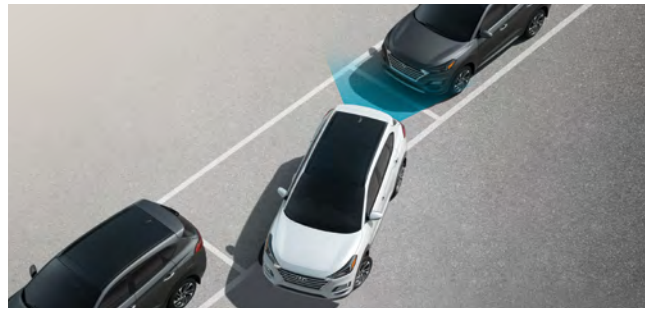
Learn more about Hyundai SmartSense.™

The 2019 Tucson features our available Hyundai SmartSense™ safety technologies, designed to help alert you to, and even avoid, unexpected dangers on the road.



Rear Cross-Traffic Collision Warning¹

The Rear Cross-Traffic Collision Warning uses radar to help identify and warn the driver of vehicles approaching from either side. The technology is extremely helpful when reversing out of tight parking spaces, and will alert you of a side-approaching vehicle before you may see it in the standard rearview camera.



Parking Distance Warning – Reverse

Parking Distance Warning sensors provide added assistance when reversing by notifying the driver of their proximity to objects behind them. Sensors mounted in the rear bumper will provide audible alerts, with increasing frequency, as the distance between the object and vehicle becomes smaller.



Forward Collision-Avoidance Assist with Pedestrian Detection²

Designed to detect a vehicle or pedestrian and warn the driver of a potential frontal collision. If the driver does not react to avoid impact, the system can automatically apply emergency braking.



Blind-Spot Collision Warning with Lane Change Assist³

The Blind-Spot Collision Warning system lets you know if a vehicle is in your blind spot. Plus, our innovative system also senses the speed of the vehicle in the adjacent lane. If it's approaching faster than you can safely make the lane change, it will signal an alarm.



Adaptive Cruise Control with traffic stop and go⁴

The Adaptive Cruise Control (ACC) system takes basic cruise control to the next level of convenience. Set your pre-determined speed and distance to the vehicle ahead, and ACC will automatically adjust the vehicle speed to maintain the set distance. The system will even operate in stop-and-go traffic, bringing the vehicle to a complete stop when necessary and then resuming automatically.



Lane Departure Warning with Lane Keeping Assist⁵

Drift outside your lane without signalling and this system is designed to inform you with audible and visual cues. If no action is taken, Lane Keeping Assist can apply corrective steering assistance to remain within the lane.



Driver Attention Warning⁶

This safety feature is designed to detect the onset of driver fatigue. The system will monitor driver input and issue a visual and audible alert if fatigue is sensed, suggesting a driving break.



High Beam Assist

High Beam Assist provides an extra level of confidence. A front camera continuously monitors traffic and lighting conditions to automatically turn high beams on or off.

The SUPERSTRUCTURE™

At the core of the Tucson is the SUPERSTRUCTURE™. An ultra-rigid vehicle chassis built with our very own Advanced High-Strength Steel, designed to be stronger, stiffer and lighter than conventional steel to provide greater benefits in safety, ride comfort and fuel economy. In the event of a collision, the SUPERSTRUCTURE™ helps protect occupants inside the cabin by absorbing harmful energy and redirecting it away from the passenger compartment.

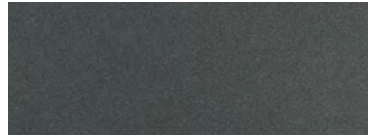


Colours and wheels

Exterior colours*



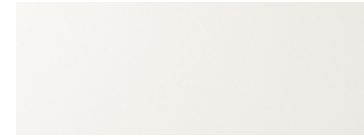
Ash Black



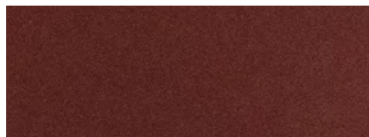
Coliseum Grey



Chromium Silver

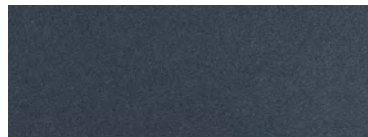


Winter White



Gemstone Red

Not available on Essential model



Dusk Blue

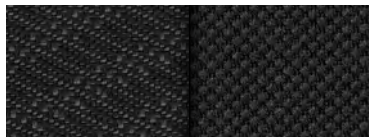
Not available on Essential model



Aqua Blue

Not available on Essential and Preferred models

Interior colours*



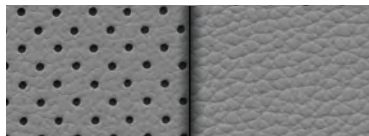
Black cloth

Standard on Essential and Preferred models



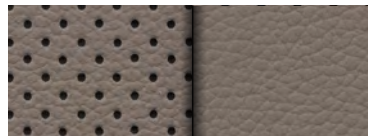
Black leather

Standard on Luxury and Ultimate models



Grey Leather

Available on Ultimate model
(Coliseum Grey exterior colour only)



Beige Leather

Available on Ultimate model
(Gemstone Red, Winter White and Ash Black
exterior colours only)

Wheels



17" steel wheel

Standard on Essential model



17" alloy wheel

Standard on Preferred model



18" alloy wheel

Standard on Preferred model
with Trend Package and Luxury model



19" alloy wheel

Standard on Ultimate model

*Exterior and interior colour options and/or availability by model may change without notice. Choice of interior colour is dependent on model and/or exterior colour selection. Colours shown are for reference only and may vary from the actual hue. Visit hyundaicanada.com or see your dealer for details.

Dimensions

Overall width
(excluding side mirrors)



Overall length



Overall height



Accessories



Running boards

Getting in and out of your vehicle is easier with a set of durable running boards.



Trailer hitch kit

Designed to meet your towing needs, a Hyundai hitch can accommodate a wide variety of hitch-mounted accessories. Kit includes the trailer hitch, ball mount and end cap. Chrome ball shown not included.



Cross rails

This durable, quick-locking cross rail system lets you transport cargo easily, without sacrificing interior room.



Premium all-weather floor liners

Premium all-weather floor liners were designed to cover the interior carpet, providing maximum protection against the elements that other mats cannot offer. Their unique and durable design features a non-slip surface for added comfort and a long-lasting premium look. Remove carpet mats prior to installation.

For more information on additional accessories please visit hyundaicanada.com, or see your dealer for details. Vehicle and accessories may not be exactly as shown.

Model summary

Essential FWD

Standard equipment includes:

- 2.0L GDI 4-cylinder engine with hood insulator
- 6-speed automatic transmission with SHIFTRONIC®
- Motor-driven power steering
- 4-disc brakes; Anti-lock Braking System with Electronic Brake-force Distribution and Brake Assist
- Vehicle Stability Management with Electronic Stability Control, Traction Control System and Hillstart Assist Control
- 17" steel wheels with 225/60R17 tires
- Automatic on/off headlights
- Body colour rear spoiler with LED brake light
- Body colour door handles
- Body colour side mirrors; heated
- Variable intermittent front windshield wipers
- Washer fluid level sensor
- Six airbags
- Driver's blind spot mirror
- Remote keyless entry system with alarm
- Temporary compact spare tire
- Rearview camera
- 60/40 split second-row with recline and centre armrest
- Dual map pockets
- Centre console with storage compartment and tray
- Power windows with driver's auto-down and power outside mirrors
- Power door locks
- Air conditioning with cabin air filter
- Adjustable head restraints for all positions
- Tilt-and-telescopic steering wheel
- Map lights with sunglasses holder, dome light and cargo-area light
- Illuminated ignition
- Dual front cup holder
- 7.0" colour touch-screen display with AM/FM/MP3 audio system; 6 speakers
- Apple CarPlay™^Δ and Android Auto™[◊]
- 1 USB outlet; AUX input
- Bluetooth® hands-free phone system
- Steering wheel-mounted audio with cruise and phone controls
- 12-volt power outlets (front console and luggage area)
- 3.5" LCD Multi-information cluster display
- LED daytime running lights
- Front fog lights
- Front 3-stage heated seats
- Projector headlights with LED accent lights
- Sharkfin antenna
- 6-way adjustable driver seat with height adjustment

Optional Safety Package:

- Forward Collision-Avoidance Assist
- Lane Departure Warning with Lane Keeping Assist

Optional: HTRAC™ All-Wheel Drive

- Includes Optional Safety Package

Preferred FWD

Includes **Essential with Safety Package** standard equipment plus:

- 17" alloy wheels
- Drive mode select
- Blind-Spot Collision Warning with Lane Change Assist
- Rear Cross-Traffic Collision Warning
- Illuminated vanity mirrors and glove box
- Power window with driver's auto-up/down
- Roof side rails
- Leather-wrapped steering wheel and shift knob
- Heated steering wheel
- LED side mirror repeaters

Optional: HTRAC™ All-Wheel Drive

Optional Trend Package:

- HTRAC™ All-Wheel Drive
- 2.4L GDI 4-cylinder engine
- Chrome-tipped dual exhaust
- 18" alloy wheels
- Panoramic sunroof with LED map lights
- 7.0" colour touch-screen display with AM/FM/SiriusXM™/MP3 audio system; 6 speakers
- Bluetooth® hands-free phone system with voice recognition
- Electrochromic rearview mirror with HomeLink®
- BlueLink® connected car system
- Proximity key with push-button start
- Illuminated exterior front door handles
- 8-way power driver's seat with 2-way lumbar support
- Front and rear premium fascia - silver painted
- Dual-zone automatic temperature control with CleanAir ionizer and auto defogger

Luxury AWD

Includes **Preferred with Trend Package** standard equipment plus:

- Surround View Monitor
- Solar glass and rear privacy glass
- Second-row USB power outlet
- Smart Power Liftgate
- Premium door sill plates
- Chrome garnish on power window switches
- Soft touch door panels
- Leather seating surfaces
- Electric Parking Brake
- Upsized 17" spare tire

Ultimate AWD

Includes **Luxury AWD** standard equipment plus:

- 19" alloy wheels
- LED headlights (low/high beam)
- LED tail lights
- 8.0" touch-screen with navigation system
- Supervision cluster 4.2" TFT LCD
- Chrome accent grille, exterior door handles
- High Beam Assist
- Ventilated front seats
- Power passenger seat
- Leather-wrapped driver's inboard knee bolster panel
- Adaptive Cruise Control with traffic stop and go
- Forward Collision-Avoidance Assist with Pedestrian Detection
- Driver Attention Warning
- Infinity® audio system with Clari-Fi™ music restoration technology, external amplifier and 8 speakers
- Rain-sensing windshield wipers
- Parking Distance Warning – Reverse

Specifications

• Standard – Not Available ◦ Optional

Performance	Essential	Preferred	Luxury	Ultimate
Engine				
2.0L GDI 4-cylinder engine (161 horsepower, 150 lb-ft torque)	•	•	–	–
2.4L GDI 4-cylinder engine (181 horsepower, 175 lb-ft torque)	–	◦	•	•
Transmission				
6-speed automatic transmission with SHIFTRONIC® manual shift mode	•	•	•	•
Drivetrain				
Front-Wheel Drive (FWD)	•	•	–	–
HTRAC™ All-Wheel Drive (AWD)	◦	◦	•	•
Exterior				
Wheels				
17 x 7.0J steel wheels	•	–	–	–
17 x 7.0J alloy wheels	–	•	–	–
18 x 7.0J alloy wheels	–	◦	•	–
19 x 7.5J alloy wheels	–	–	–	•
Exterior lighting				
Automatic headlights	•	•	•	•
Front fog lights	•	•	•	•
LED daytime running lights	•	•	•	•
Projector headlights with LED accents	•	•	•	•
LED headlights	–	–	–	•
LED tail lights	–	–	–	•
Outside mirrors				
Body colour, power-adjustable, heated with timer	•	•	•	•
Mirror-mounted LED turn signal indicator	–	•	•	•
Mouldings and trim				
Sharkfin antenna	•	•	•	•
Chrome door handles	–	–	–	•
Chrome front grille	–	–	–	•
Glass				
Panoramic sunroof	–	◦	•	•
Rear window privacy glass	–	–	•	•
Wipers				
Rear windshield, 2-speed with washer	•	•	•	•
Windshield wiper de-icer	•	•	•	•
Rain-sensing windshield wipers	–	–	–	•
Interior				
Seating				
5-passenger capacity	•	•	•	•
60/40 split-fold down and reclining rear seatbacks with adjustable head restraint	•	•	•	•
Heated front seats	•	•	•	•
Cloth seating	•	•	–	–
6-way manually adjustable driver's seat	•	•	–	–
Heated rear seats	–	•	•	•
8-way power-adjustable driver's seat with 2-way lumbar support	–	◦	•	•
Leather seating surfaces	–	–	•	•
8-way power adjustable front passenger seat	–	–	–	•
Ventilated front seats	–	–	–	•

Multimedia	Essential	Preferred	Luxury	Ultimate
Apple CarPlay™ ^Δ and Android Auto™ [◦]	•	•	•	•
Bluetooth® hands-free phone system	•	•	–	–
Bluetooth® hands-free phone system with voice recognition	–	◦	•	•
Rearview camera	•	•	•	•
USB/MP3 auxiliary input jacks (centre console mounted)	•	•	•	•
7.0" touch-screen display	•	•	•	–
AM/FM/MP3 audio system with 6 speakers	•	•	–	–
AM/FM/SiriusXM™/MP3 audio system with 6 speakers	–	◦	•	–
BlueLink® connected car system	–	◦	•	•
Surround View Monitor	–	–	•	•
8.0" touch-screen display with navigation system	–	–	–	•
AM/FM/SiriusXM™/MP3 Infinity® audio system with 8 speakers	–	–	–	•
HVAC				
External temperature display	•	•	•	•
Rear window defroster with timer	•	•	•	•
Manual temperature control with air conditioning	•	•	–	–
Dual-zone automatic temperature control with CleanAir Ionizer	–	◦	•	•
Floor console mounted rear seat vents	–	•	•	•
Steering wheel and instrumentation				
Audio, cruise and telephone controls	•	•	•	•
Manual tilt and telescopic	•	•	•	•
Heated, leather-wrapped	–	•	•	•
Supervision cluster with 4.2" TFT LCD screen	–	–	–	•
Convenience				
Cruise control	•	•	•	–
Power door locks	•	•	•	•
Remote keyless entry system with alarm	•	•	•	•
Driver's window auto-up/down with pinch protection	–	•	•	•
Proximity keyless entry with push-button ignition	–	◦	•	•
Electrochromic rearview mirror with HomeLink® integrated transceiver	–	◦	•	•
Electronic parking brake	–	–	•	•
Smart Power Liftgate	–	–	•	•
Adaptive Cruise Control with traffic stop and go	–	–	–	•
Safety				
Anti-lock Braking System with Electronic Brake-force Distribution and Brake Assist	•	•	•	•
Electronic Stability Control with Traction Control System	•	•	•	•
Vehicle Stability Management	•	•	•	•
Forward Collision-Avoidance Assist	◦	•	•	•
Lane Departure Warning with Lane Keeping Assist	◦	•	•	•
Blind Spot-Collision Warning with Lane Change Assist	–	•	•	•
Rear Cross-Traffic Collision Warning	–	•	•	•
Driver Attention Warning	–	–	–	•
Forward Collision-Avoidance Assist with Pedestrian Detection	–	–	–	•
High Beam Assist	–	–	–	•
Parking Distance Warning — Reverse	–	–	–	•



One of the best-backed warranties in Canada.

You will see that a number of our vehicles have received multiple awards from the most reputable third-party organizations, so you can take their word when it comes to the quality of our vehicles. This quality is equally matched by the quality of our warranty. We stand confidently behind our products to give you ultimate peace of mind with a 5-year/100,000 kilometre Comprehensive Limited Warranty[†]. We also provide a 5-year/Unlimited kilometre Roadside Assistance Program^{††} featuring flat tire changing, lockout service and more. Just one toll-free call away, 24 hours a day.



Hyundai Auto Canada Corp.
hyundaicanada.com



^{™/®}The Hyundai name, logos, product names, feature names, images and slogans are trademarks owned or licensed by Hyundai Auto Canada Corp.. Specifications, features, illustrations, accessories, materials and equipment and all other information shown in this brochure are based on the latest information available at the time of publication. Although descriptions are believed to be correct, accuracy cannot be guaranteed. Hyundai Auto Canada Corp. reserves the right to make any changes or modifications at any time, without notice or obligation, including, without limitation, in colour, specifications, features, accessories, materials, equipment and models. Some vehicles are shown with optional equipment. All Hyundai warranties have no deductible. [†]Hyundai's Comprehensive Limited Warranty coverage covers most vehicle components against defects in workmanship under normal use and maintenance conditions. ^{††}Hyundai's 24-Hour Roadside Assistance Program is a limited service and does not cover certain costs or expenses. Roadside Assistance is not a warranty. [‡]Available on select models only. BlueLink[®] includes 5 years of service without charge. The BlueLink[®] service is available for new vehicle purchases and leases subject to the BlueLink[®] subscription terms and conditions. Only use BlueLink[®] and corresponding devices when safe to do so. Cellular and GPS coverage is required. Features, specifications, and fees may vary by models and are subject to change. For more on details and limitations, visit hyundaicanada.com or your authorized Hyundai dealer. Not all devices will be compatible. See Owner's Manual for further details. ^{†††}Never rely exclusively on the Rear Cross-Traffic Collision Warning. Always look over your shoulder and use your mirrors to confirm rear clearance. There are limitations to the function, detection, range and clarity of the system. The system may not detect every vehicle. This system does not detect stationary objects. Vehicle must be in reverse and has to be travelling at 10 km/h or less. See Owner's Manual for further details and limitations. ^{††††}Forward Collision-Avoidance Assist (FCA) is designed to detect vehicles that are directly in front of the vehicle. FCA will not detect all vehicles and objects. FCA will not work on winding or hilly roads, during certain weather conditions such as rain, snow, fog and any other times of limited visibility. FCA engages at approximately 10 km/h. The specific features of FCA are only activated within certain respective speed ranges. When equipped with pedestrian detection, FCA will not detect all pedestrians under certain conditions. See Owner's Manual for detailed descriptions of example conditions in which FCA may not detect a pedestrian. FCA is not a substitute for safe driving. Always check your surroundings when driving. See Owner's Manual for further details and limitations. ^{†††††}Never rely completely on Blind-Spot Collision Warning (BCW) and be sure to use proper lane changing procedures. BCW will not detect every object or vehicle and will not prevent accidents. Always look over your shoulder and use your mirrors to confirm clearance. See Owner's Manual for further details and limitations. ^{††††††}Adaptive Cruise Control (ACC) with traffic stop and go is not a collision avoidance or warning device. ACC is for highway use only and should not be used in poor weather, heavy or varying traffic, or on winding or slippery roads. Driver remains responsible to slow or stop the vehicle to avoid a collision. Acceleration after the vehicle comes to a complete stop will only occur when the vehicle has been stopped for less than three seconds. See Owner's Manual for further details and limitations. ^{†††††††}Lane Departure Warning with Lane Keeping Assist operates when vehicle speed exceeds approximately 64 km/h and only when the lane markings are clearly visible on the road and detected by the system. It will not prevent loss of control. See Owner's Manual for further details and limitations. ^{††††††††}Driver Attention Warning (DAW) is only a notification system and will not influence the direction or speed of the vehicle. DAW will not prevent accidents. DAW does not replace attentive and safe driving. Always ensure that you pay careful attention while driving. See Owner's Manual for further details and limitations. ^{†††††††††}Apple CarPlay[™] works with iPhone 5s, iPhone 5c, iPhone 5 and later models running the latest version of iOS 7 and above. Apple CarPlay[™] may not be available on all devices and may not be available in all countries or regions. Visit www.apple.com for further details and any applicable limitations. Subject to app compatibility. Apple and Apple CarPlay are trademarks of Apple Inc. ^{††††††††††}Android Auto[™] is compatible with Android phones running Android Lollipop or newer. Android Auto may not be available on all devices and is not available in all countries or regions. Additional apps may be required. Visit www.android.com for further details and any applicable limitations. Subject to app compatibility. Android and Android Auto are trademarks of Google Inc.. The SiriusXM[™] name is a trademark of SiriusXM Satellite Radio Inc.. Bluetooth[®] word mark and logos are registered trademarks owned by Bluetooth SIG, Inc.. Infinity[®] is a registered trademark of Harman International, Inc.. All other trademarks and trade names are those of their respective owners.