

First-ever

# VELOSTER N

2019





# The first-ever VELOSTER N.



The first-ever Veloster N has arrived. This road-ready, track-inspired sport coupe utilizes technology derived from our dedicated Motorsport division to deliver a race-inspired thrill on your everyday drive. The product of decades of experience from our R&D centre in Namyang and endless of testing at the Nürburgring, the Veloster N is unlike any other Hyundai you've ever seen. Experience highly concentrated performance, in a precise package designed to elevate driver engagement to a whole new level.



# Serious power.

The 275-HP 2.0L turbocharged engine with 260 lb-ft of torque places heart pounding power right at your foot. A six-speed manual transmission with auto rev-matching provides quicker and sportier downshifts. Equipped with launch control, the Veloster N delivers an energizing snap that will keep you firmly planted to the back of your seat. Further enhancing the experience, a shift timing indicator alerts you to an approaching redline for peak acceleration.





## N-exclusive design

The Veloster N's sporty red trim accents reflect its performance credentials. In the front, the aggressive grille with the N badge makes a powerful statement. Standard LED headlights and daytime running lights provide excellent visibility and striking looks.

## Active sport exhaust

The Veloster N features a high-flow active sport exhaust with a variable actuator to deliver an incredible soundtrack of crackles and pops with every shift. Plus, you can select an exhaust sound level for any driving scenario thanks to three unique settings.



## 19" alloy wheels with Pirelli high-performance tires

The high-performance 235/35 R19 Pirelli P-Zero summer tires were engineered exclusively for the Veloster N. Wrapped around machined-finish, lightweight 19" alloys, its tread pattern and nano-composite compound were specifically tailored for optimal grip, lateral stability and stopping power.

## N-exclusive sport seats

Remain firmly in control with the heavily bolstered, N-exclusive sport seats, ergonomically designed to provide peak support and comfort for every drive, from your commute to the track. They are also heated for extra warmth in the winter.







## Bring on corners with **N.**

The Veloster N provides world-class cornering ability with an electronically controlled mechanical limited-slip differential. This system uses true torque vectoring to intelligently and precisely distribute torque where it's needed most. This increases cornering speed and reduces understeer for enhanced handling agility.





# Tailor your drive.

US model shown.

The N-exclusive steering wheel puts driving performance features right at your fingertips with the dedicated N button. Choose N mode for optimal performance settings, or tailor the driving dynamics exactly to your preferences with Custom mode. It allows you to individually select your preferred steering weight, engine mapping, damper firmness, exhaust sound and stability control, and then store the selected setting as your custom profile to be recalled later at the press of a button.

# Specifications

• = Standard

	Veloster N
<b>N performance highlights</b>	
2.0L (1,998cc) Turbocharged Gasoline Direct Injection engine (275 horsepower, 260 lb-ft-torque)	•
6-speed manual transmission with driver-adjustable down-shift rev matching	•
Active sport exhaust with variable actuator	•
Electronically controlled suspension	•
Electronically controlled limited-slip differential	•
Drive Mode Selection including N mode and Custom mode	•
(exhaust, suspension, electronically controlled limited-slip differential, steering and more)	•
Launch control with adjustable RPM	•
<b>Exterior</b>	
<b>Wheels and tires</b>	
Lightweight 19 x 8.0J alloy wheels	•
P235/35R19 Pirelli P-Zero summer tires	•
Temporary mobility kit	•
<b>Exterior lighting</b>	
Headlights escort function	•
Automatic headlights	•
LED daytime running lights	•
LED headlights	•
LED tail lights	•
<b>Outside mirrors</b>	
Dual power-adjustable heated side mirrors (black painted)	•
LED side mirror turn signal repeaters	•
<b>Mouldings and trim</b>	
N-exclusive front and rear bumpers	•
N-exclusive front grille	•
N-exclusive side sill mouldings	•
N-exclusive two-stage rear spoiler	•
<b>Interior</b>	
<b>Seating</b>	
N-exclusive sport seats with cloth seating surfaces	•
6-way manually adjustable driver's seat	•
4-way power-adjustable lumbar support for driver's seat	•
4-way manually adjustable front passenger's seat	•
Heated front seats	•
60/40 split-folding rear seats	•
Rear seat cup holders and fixed head restraints	•
<b>Multimedia</b>	
Android Auto™ <sup>o</sup> and Apple CarPlay™ <sup>Δ</sup>	•
Infinity® AM/FM/SiriusXM™/MP3 audio system with 8 speakers and external amplifier	•
8.0" touch-screen display	•
Rearview camera with dynamic guidelines	•
USB/auxiliary connectivity	•
Bluetooth® hands-free phone system with voice recognition	•
<b>Interior trim</b>	
Black roof trim	•
Sunvisors, Illuminated vanity mirrors with driver extension	•
Leather-wrapped shift knob with N logo	•
N-exclusive performance blue accents	•

# Specifications

• = Standard

	Veloster N
<b>HVAC</b>	
Air conditioning, automatic temperature control	•
Rear window defroster, electronic with timer	•
<b>Steering wheel</b>	
Leather-wrapped sport steering wheel with drive mode selection and N mode buttons	•
Heated steering wheel	•
Tilt-and-telescopic steering wheel	•
Mounted cruise, audio and telephone controls	•
<b>Instrumentation</b>	
4.2" colour TFT cluster display	•
<b>Convenience features</b>	
Cruise control	•
Power windows (3 total), with driver's auto-up with pinch protection	•
Power door locks, 2-turn unlock, inside handle override	•
Proximity keyless entry with push-button ignition	•
Front centre console with storage compartment with artificial leather armrest	•
Sunglasses holder	•
<b>Safety</b>	
6 airbags	•
Anti-lock Braking System with Electronic Brake-force Distribution	•
Brake Assist	•
Vehicle Stability Management, Electronic Stability Control system with Traction Control System	•

# Colours

## Exterior Colours\*

Phantom Black



Chalk White

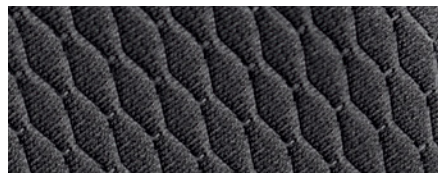


Performance Blue



## Interior Colours\*

Black cloth



For more detailed specifications and information, please visit [hyundaicanada.com](http://hyundaicanada.com) or visit your dealer today.

\*Exterior and interior colour options and/or availability may change without notice. Colours shown are for reference only and may vary from the actual hue. Visit [hyundaicanada.com](http://hyundaicanada.com) or see your dealer for details.



# Dimensions

Overall width  
(excluding side mirrors)



1,810 mm

Overall length



4,265 mm

Overall height

1,394 mm



# Accessories



## Rear Bumper Protection Film – Black

Protection film easily applies to protect from scratches and scrapes while maintaining the visual appearance of your vehicle.



## Spline Drive Nuts

These Spline Drive Nuts take safety, dependability and good looks to the next level by offering a durable black finish and maximum gripping power in a compact design that requires a special keytool for installation and removal.



## Blue LED Footwell Light

Subtle yet sophisticated. Enhance your cabin with blue LED light that bathes the front footwell in ambient light whenever the doors are unlocked and fading out when the engine starts.



## Winter Wheel & Tire Packages

Winter tires have specialized rubber and tread to handle the cold temperatures resulting in better traction, handling and braking. Mount your tires on a set of Hyundai steel wheels and spare your alloy wheels from the corrosion caused by salt and slush.



# 5 YEAR WARRANTY<sup>†</sup>



5 YEAR/100,000 KM  
Comprehensive Limited Warranty<sup>†</sup>



5 YEAR/100,000 KM  
Powertrain Warranty



5 YEAR/100,000 KM  
Emission Warranty



5 YEAR/UNLIMITED KM  
Roadside Assistance Program<sup>††</sup>

## One of the best-backed warranties in Canada.

You will see that a number of our vehicles have received multiple awards from the most reputable third-party organizations, so you can take their word when it comes to the quality, design and safety of our vehicles. This quality is equally matched by the quality of our warranty. We stand confidently behind our products to give you ultimate peace of mind with a 5-year/100,000 kilometre Comprehensive Limited Warranty<sup>†</sup>. We also provide a 5-year/Unlimited kilometre Roadside Assistance Program<sup>††</sup> featuring flat tire changing, lockout service and more. Just one toll-free call away, 24 hours a day.



**Customer  
Care**  
hyundaicanada.com/customercare

**Hyundai Auto Canada Corp.**  
hyundaicanada.com



<sup>™</sup>/<sup>®</sup>The Hyundai name, logos, product names, feature names, images and slogans are trademarks owned or licensed by Hyundai Auto Canada Corp.. Specifications, features, illustrations, accessories, materials and equipment and all other information shown in this brochure are based on the latest information available at the time of publication. Although descriptions are believed to be correct, accuracy cannot be guaranteed. Hyundai Auto Canada Corp. reserves the right to make any changes or modifications at any time, without notice or obligation, including, without limitation, in colour, specifications, features, accessories, materials, equipment and models. Some vehicles are shown with optional equipment. All Hyundai warranties have no deductible. <sup>†</sup>Hyundai's Comprehensive Limited Warranty coverage covers most vehicle components against defects in workmanship under normal use and maintenance conditions. <sup>††</sup>Hyundai's 24-Hour Roadside Assistance Program is a limited service and does not cover certain costs or expenses. Roadside Assistance is not a warranty. <sup>‡</sup>Apple CarPlay™ works with iPhone 5s, iPhone 5c, iPhone 5 and later models running the latest version of iOS 7 and above. Apple CarPlay™ may not be available on all devices and may not be available in all countries or regions. Visit [www.apple.com](http://www.apple.com) for further details and any applicable limitations. Subject to app compatibility. Apple and Apple CarPlay are trademarks of Apple Inc.. <sup>§</sup>Android Auto™ is compatible with Android phones running Android Lollipop or newer. Android Auto may not be available on all devices and is not available in all countries or regions. Additional apps may be required. Visit [www.android.com](http://www.android.com) for further details and any applicable limitations. Subject to app compatibility. Android and Android Auto are trademarks of Google Inc.. Infinity® is a registered trademark of Harman International, Inc.. The SiriusXM™ name is a trademark of SiriusXM Satellite Radio Inc.. Bluetooth® word mark and logos are registered trademarks owned by Bluetooth SIG, Inc.. All other trademarks and tradenames are those of their respective owners.